

Attachment D – Bushfire Information

**ADVERTISED
PLAN**

This copied document to be made available for the sole purpose of enabling its consideration and review as part of a planning process under the Planning and Environment Act 1987. The document must not be used for any purpose which may breach any copyright

ADVERTISED PLAN

Bushfire Protection Measures

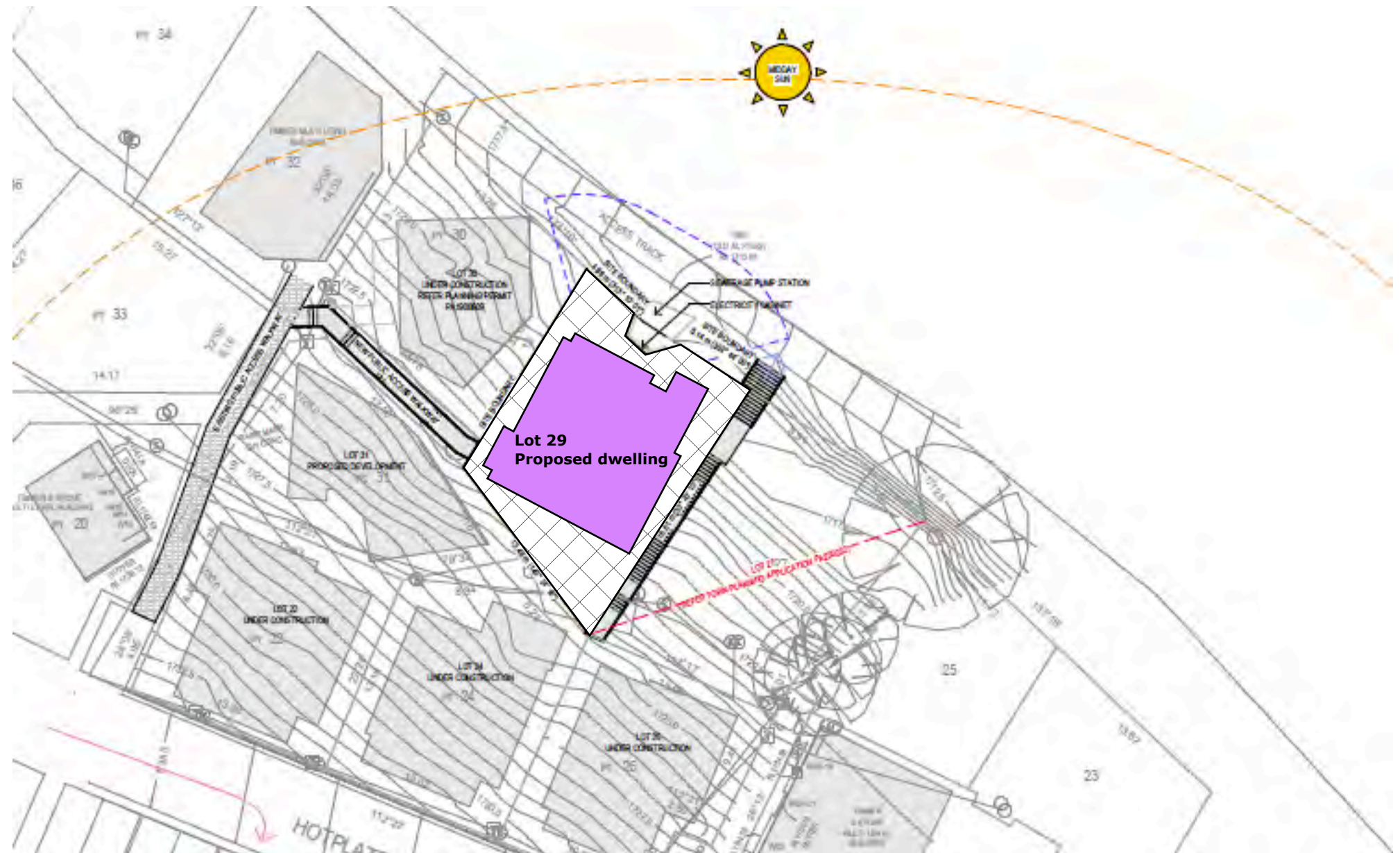
The buildings must be constructed to a BAL-40

Defendable space will be provided to the boundary and the vegetation will be managed in accordance with the following requirements:

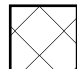

- Grass must be short cropped and maintained during the declared fire danger period.
- All leaves and vegetation debris must be removed at regular intervals during the declared fire danger period.
- Within 10 metres of a building, flammable objects must not be located close to the vulnerable parts of the building.
- Plants greater than 10 centimetres in height must not be placed within 3 metres of a window or glass feature of the building.
- Shrubs must not be located under the canopy of trees.
- Individual and clumps of shrubs must not exceed 5 square metres in area and must be separated by at least 5 metres.
- Trees must not overhang or touch any elements of the building.
- The canopy of trees must be separated by at least 5 metres.
- There must be a clearance of at least 2 metres between the lowest tree branches and ground level.

Vehicle access must be in accordance with Table 5 to Clause 53.02.

The owner must comply with the Mount Hotham Alpine Resort Community Bushfire Emergency Management Plan and any directions by the Hotham Resort Management and the CFA.



This copied document to be made available for the sole purpose of enabling its consideration and review as part of a planning process under the Planning and Environment Act 1987. The document must not be used for any purpose which may breach any copyright

-  Defendable Space
-  Proposed Buildings