

Concept Layout Plan

2226 - Elaine BESS

Proposed Layout

- Battery Storage
- Transformer
- Switch Gear
- 220kV HV Substation
- Fence
- Storage Containers
- O&M Facility
- Control Room
- Switchboard
- Water Tanks
- Office Trailer
- 220 kv Aboveground Transmission Line Option
- 220 kv Underground Transmission Line Option
- Car Parking
- Access Roads
- Emergency Access
- Proposed Native Vegetation Screening

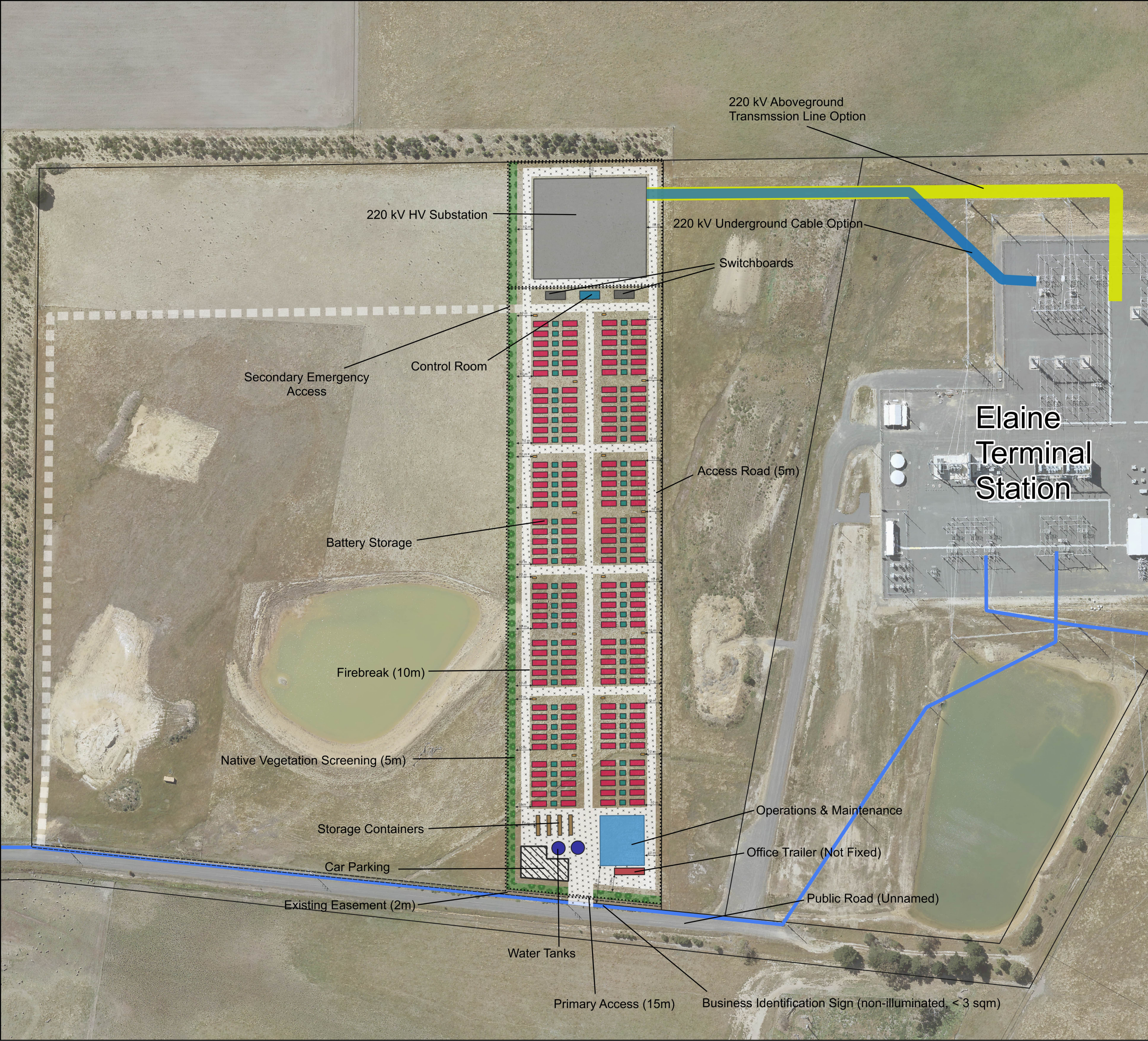
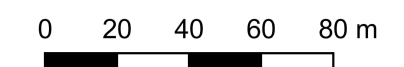
Existing Features

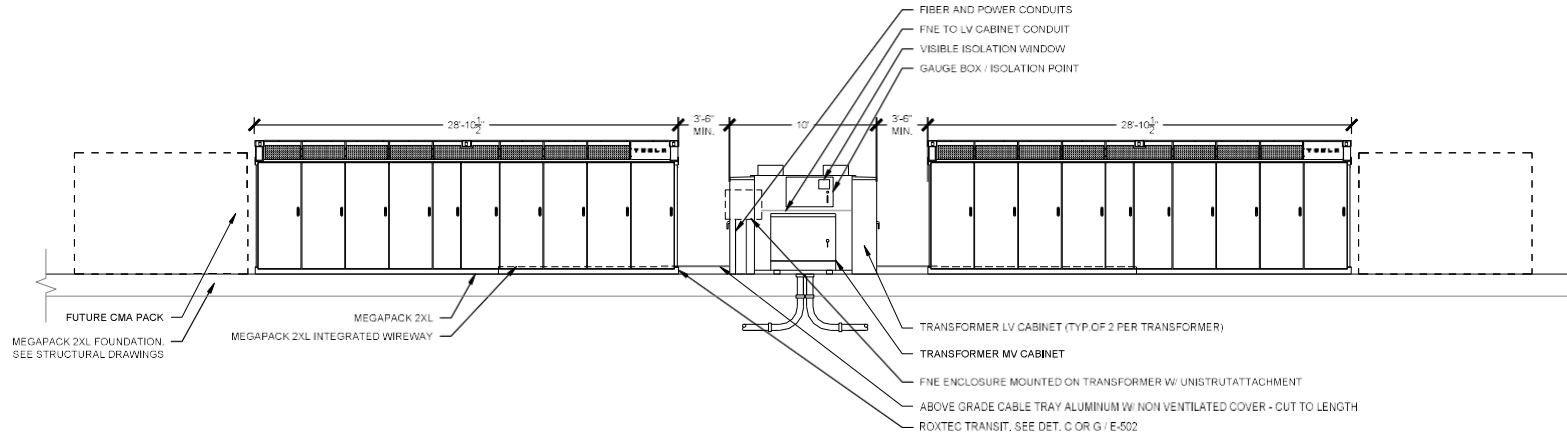
- 132 kV Existing Transmission Line
- Power Supply (Underground) Easement
- Property Cadastre

*All areas and dimensions are indicative and subject to change

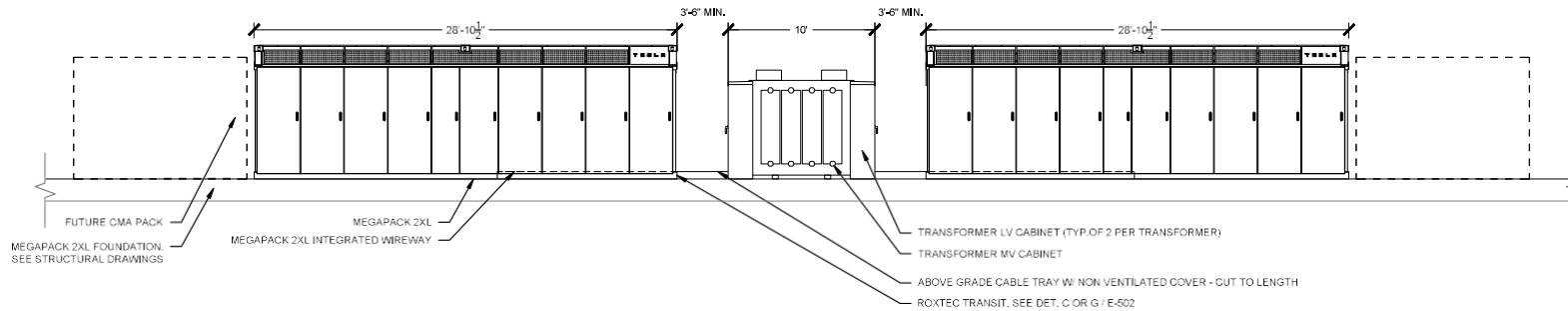
Version: 5.3

Date: 20/02/2024





BATTERY STORAGE AND TRANSFORMER – FRONT VIEW
1/4" = 1'-0"



BATTERY STORAGE AND TRANSFORMER – REAR VIEW
1/4" = 1'-0"

NOTES:

ORIGINAL SIZE 24" X 36"
SHEET SIZE ARCH D



AKAYSHA ENERGY PTY.
LTD.
10-20 GWYNNE ST
CREMORNE, VIC

DRAWN:

T. MATOTEK

8/01/2024

DRAWING TITLE:

BATTERY STORAGE ELEVATIONS

APPROVED:

PROJECT:

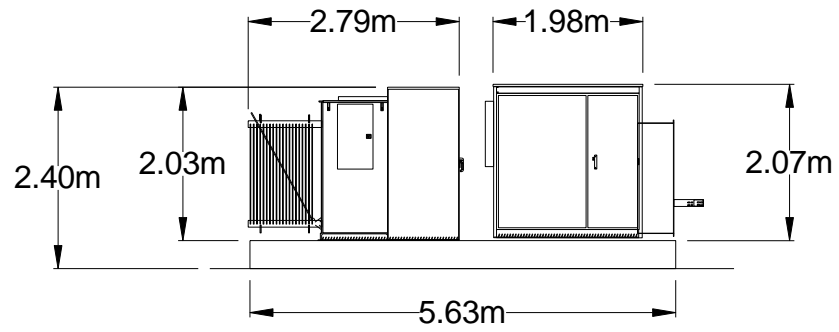
Elaine BESS

REV:

1.0

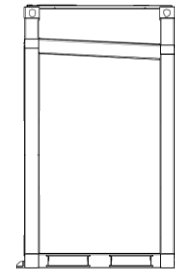
SHEET:

1 OF 7

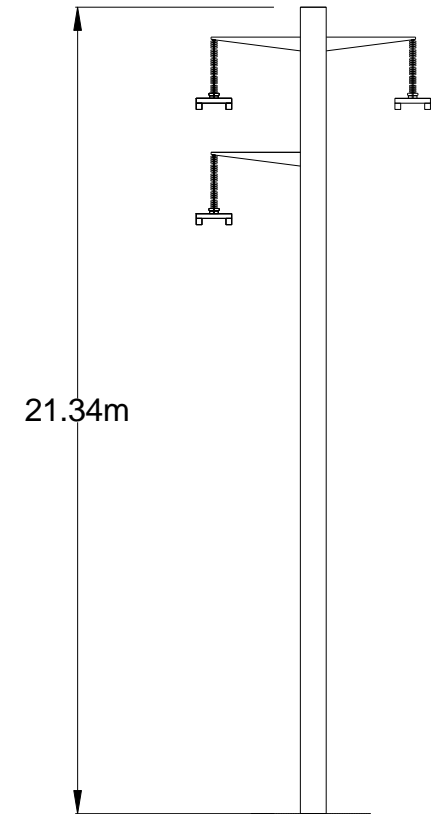


TRANSFORMER - SIDE VIEW

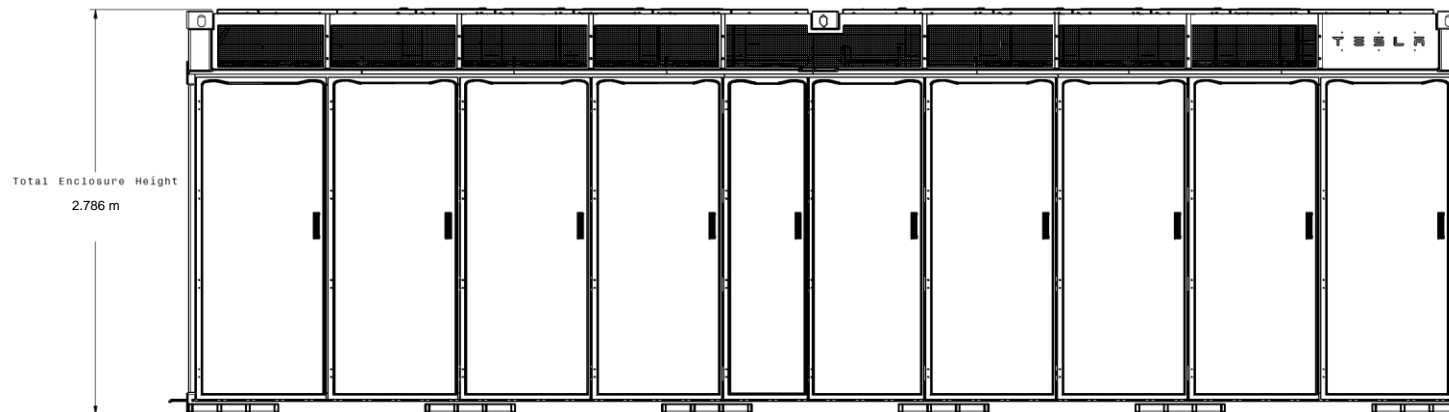
1:100



BATTERY STORAGE - SIDE VIEW



TYPICAL DESIGN OF 33KV POLE



BATTERY STORAGE - FRONT VIEW

NOTES:



AKAYSHA ENERGY PTY.
LTD.
10-20 GWYNNE ST
CREMORNE, VIC

DRAWN:

T. MATOTEK

8/01/2024

DRAWING TITLE:

TRANSFORMER AND BESS ELEVATIONS

APPROVED:

PROJECT:

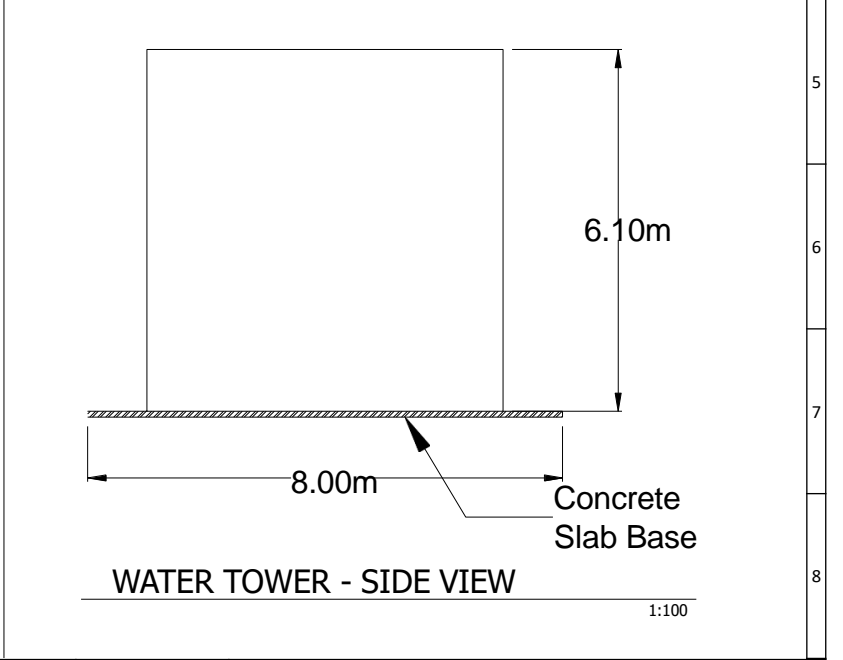
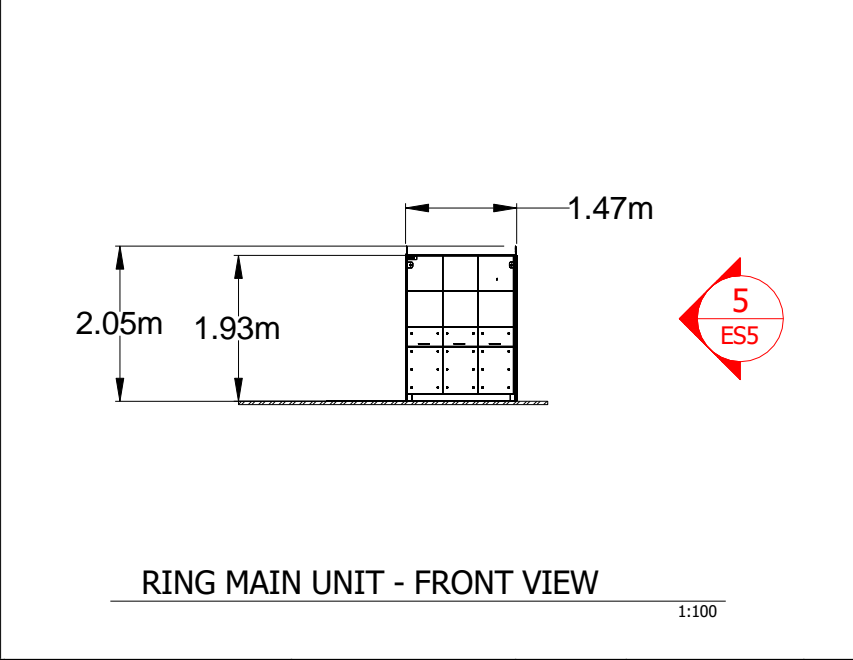
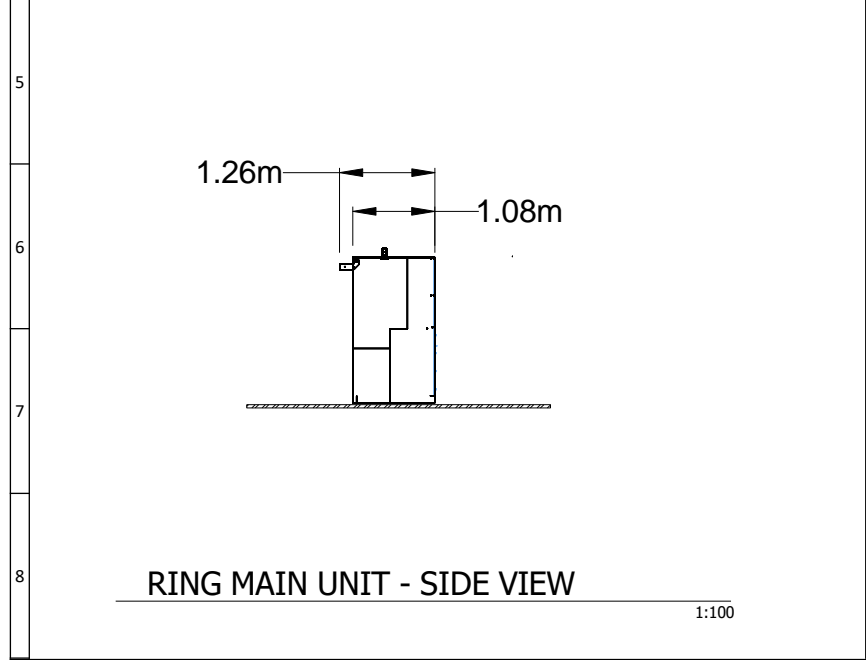
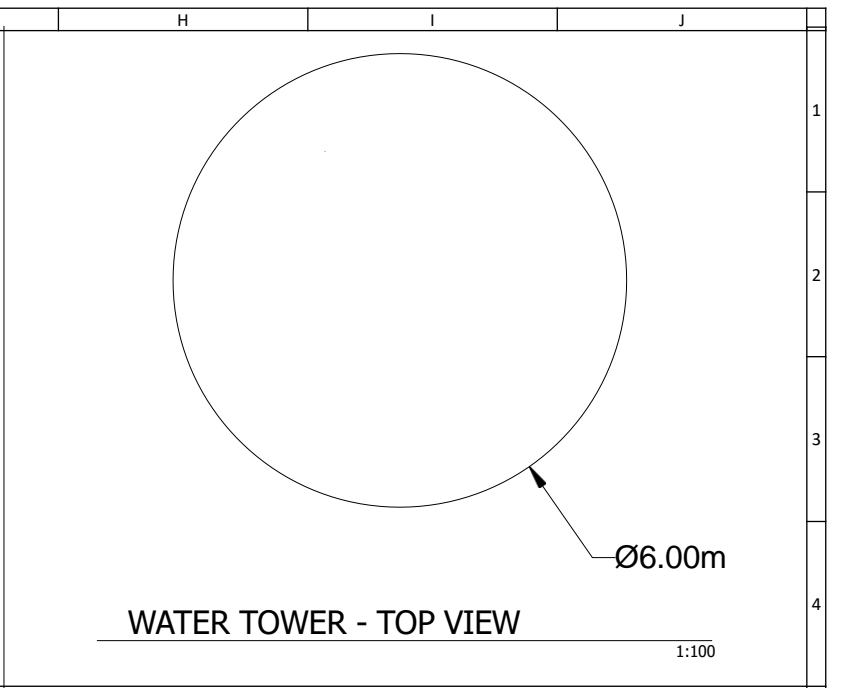
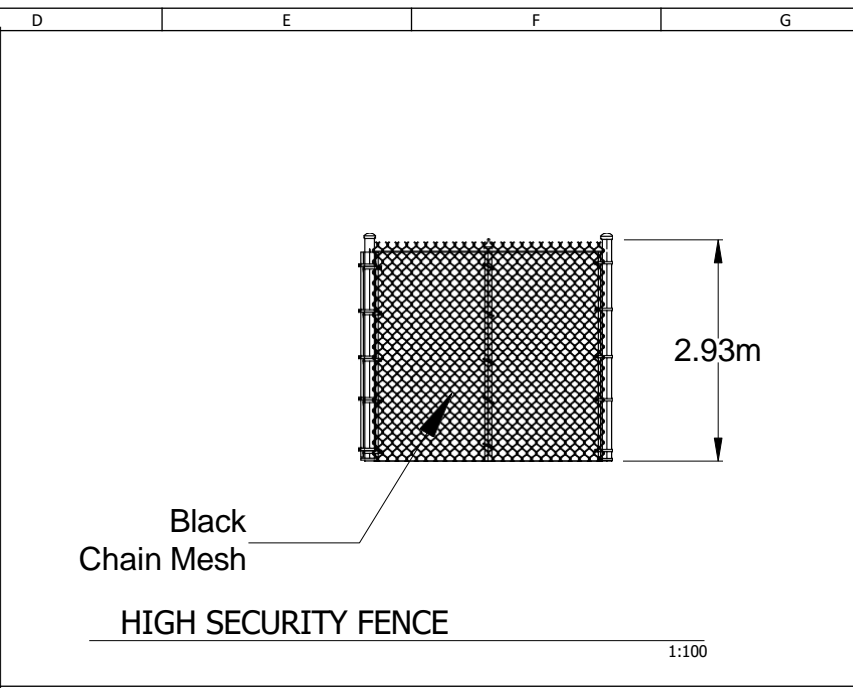
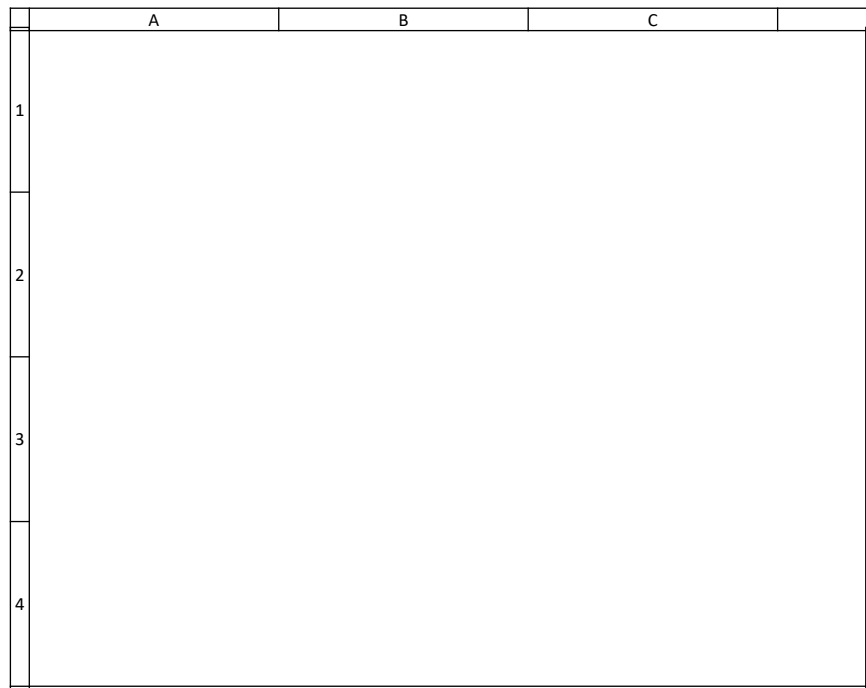
Elaine BESS


REV:

1.0

SHEET:

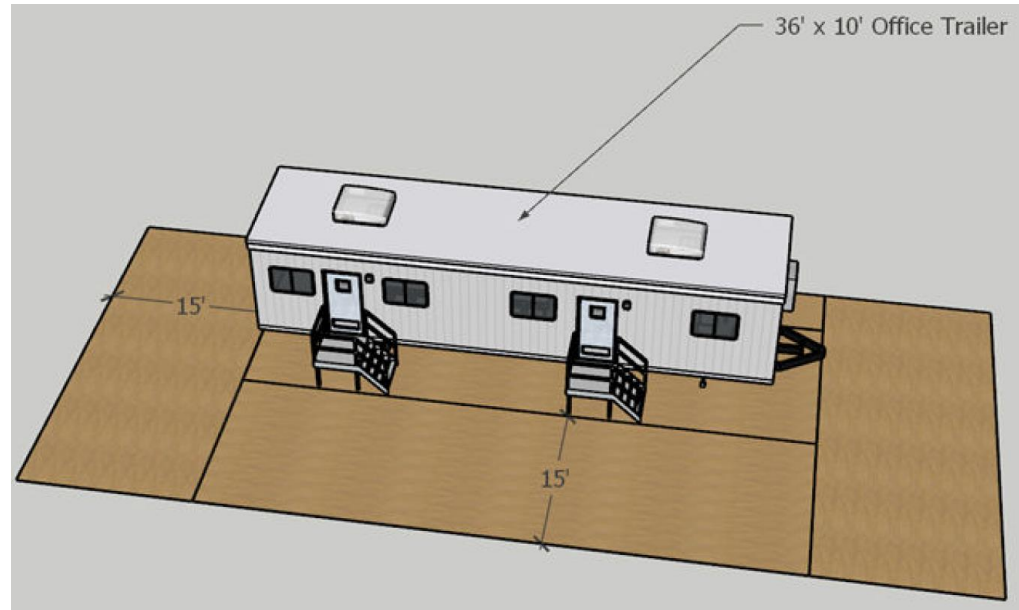
2 OF 7



NOTES:		AKAYSHA ENERGY PTY. LTD. 10-20 GWYNNE ST CREMORNE, VIC	DRAWN:	T. MATOTEK	8/01/2024	DRAWING TITLE:	OTHER EQUIPMENT ELEVATIONS AND DETAILS			
			APPROVED:			PROJECT:	Elaine BESS			
						REV:	1.0	SHEET:	3 OF 7	

The maintenance shed will also include secure, banded storage for hazardous materials if they are required to be stored onsite

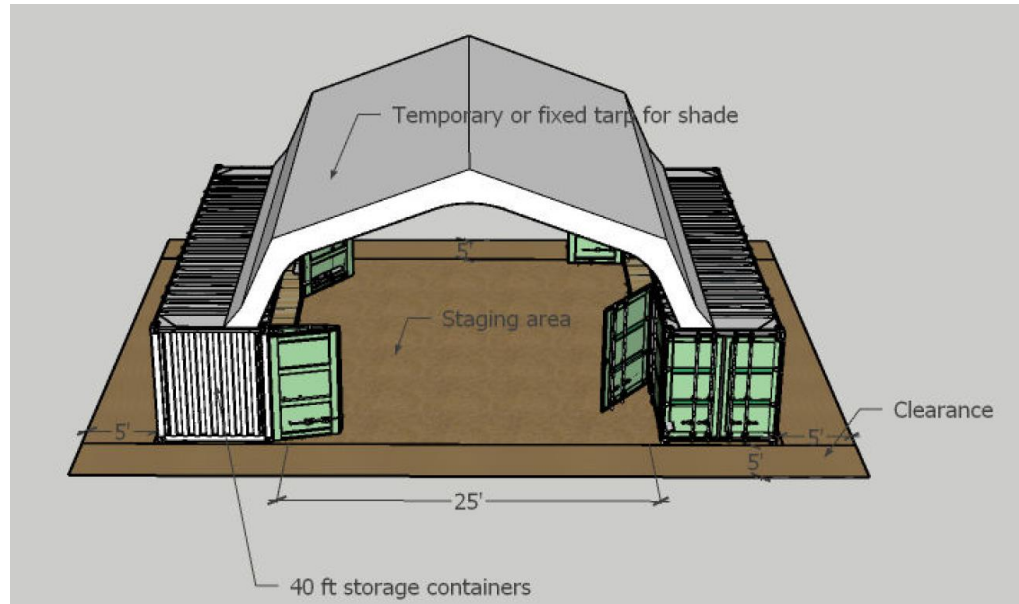
MATERIALS: COLORBOND STEEL
COLOUR: EUCALYPT GREEN OR SIMLAR MUTED COLOURS



ON-SITE MAINTENANCE INFRASTRUCTURE CONCEPT

The maintenance shed will also include secure, banded storage for hazardous materials if they are required to be stored onsite

MATERIALS: STEEL
COLOUR: EUCALYPT GREEN OR SIMLAR MUTED COLOURS



STORAGE CONTAINER AND STAGING AREA CONCEPT

NOTES:



AKAYSHA ENERGY PTY.
LTD.
10-20 GWYNNE ST
CREMORNE, VIC

DRAWN: T. MATOTEK
APPROVED:

8/01/2024

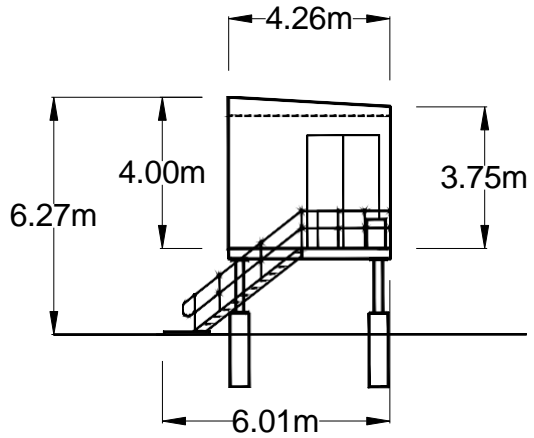
DRAWING TITLE: O&M BUILDING PLAN AND ELEVATION

PROJECT: Elaine BESS

REV: 1.0

SHEET:

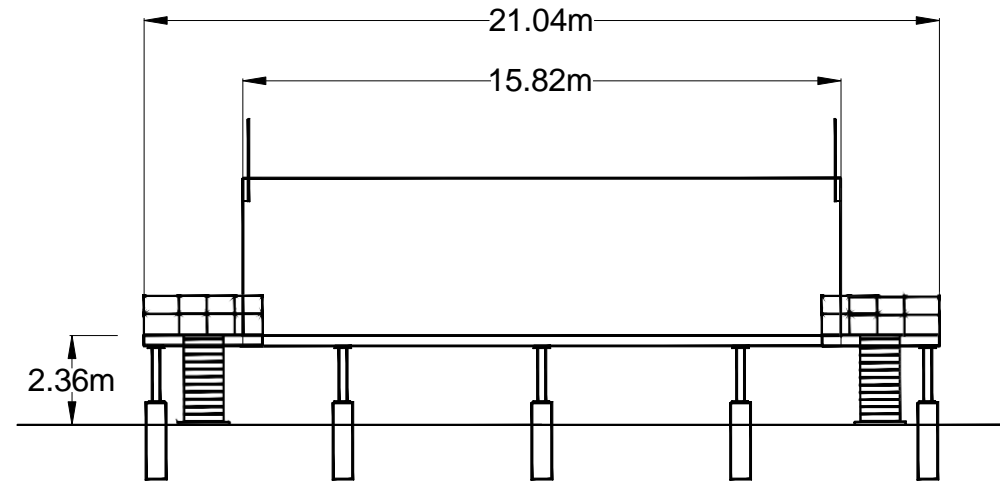
4 OF 7



CONTROL ROOM - SIDE VIEW

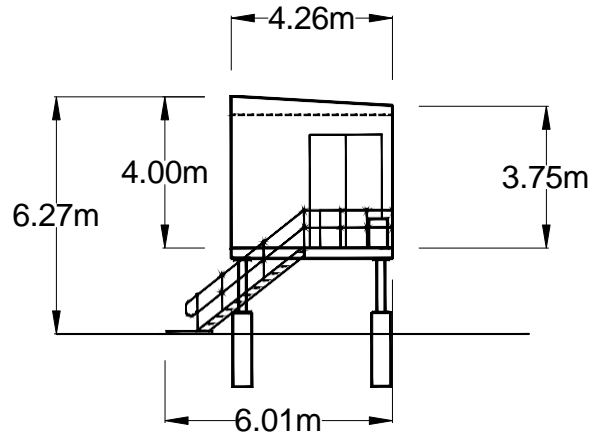
1:200

Demountable style office building with natural colour tones of Eucalypt Green or similar muted colours.



CONTROL ROOM - FRONT VIEW

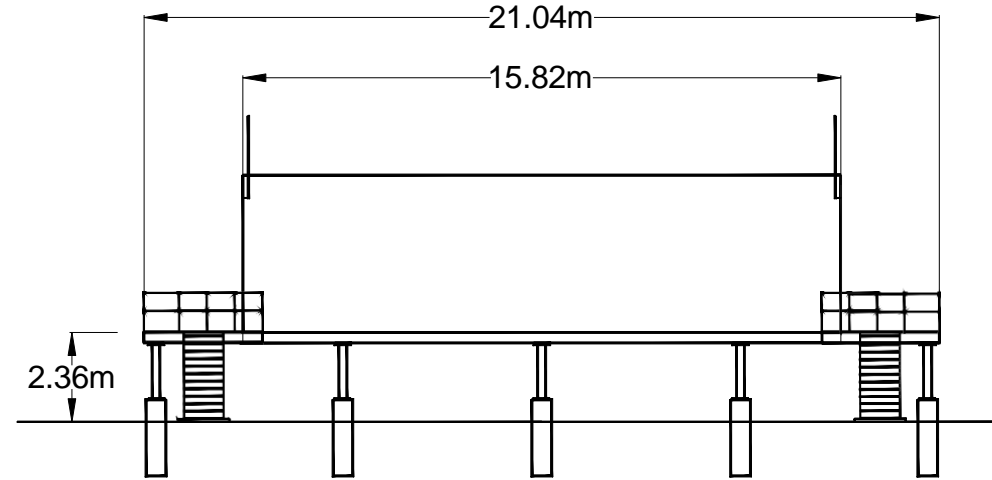
1:200



33KV SWITCH ROOM - SIDE VIEW

1:200

Demountable style office building with natural colour tones of Eucalypt Green or similar muted colours.



33KV SWITCH ROOM - FRONT VIEW

1:200

NOTES:



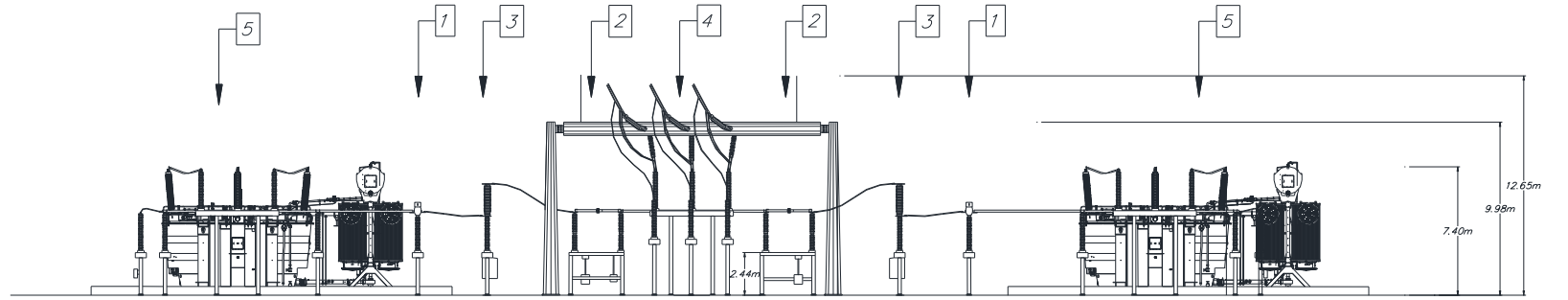
AKAYSHA ENERGY PTY. LTD.
10-20 GWYNNE ST
CREMORNE, VIC

DRAWN:	T. MATOTEK	8/01/2024
APPROVED:		

DRAWING TITLE:	CONTROL AND SWITCH ROOMS ELEVATIONS		
PROJECT:	Elaine BESS		
REV:	1.0	SHEET:	5 OF 7

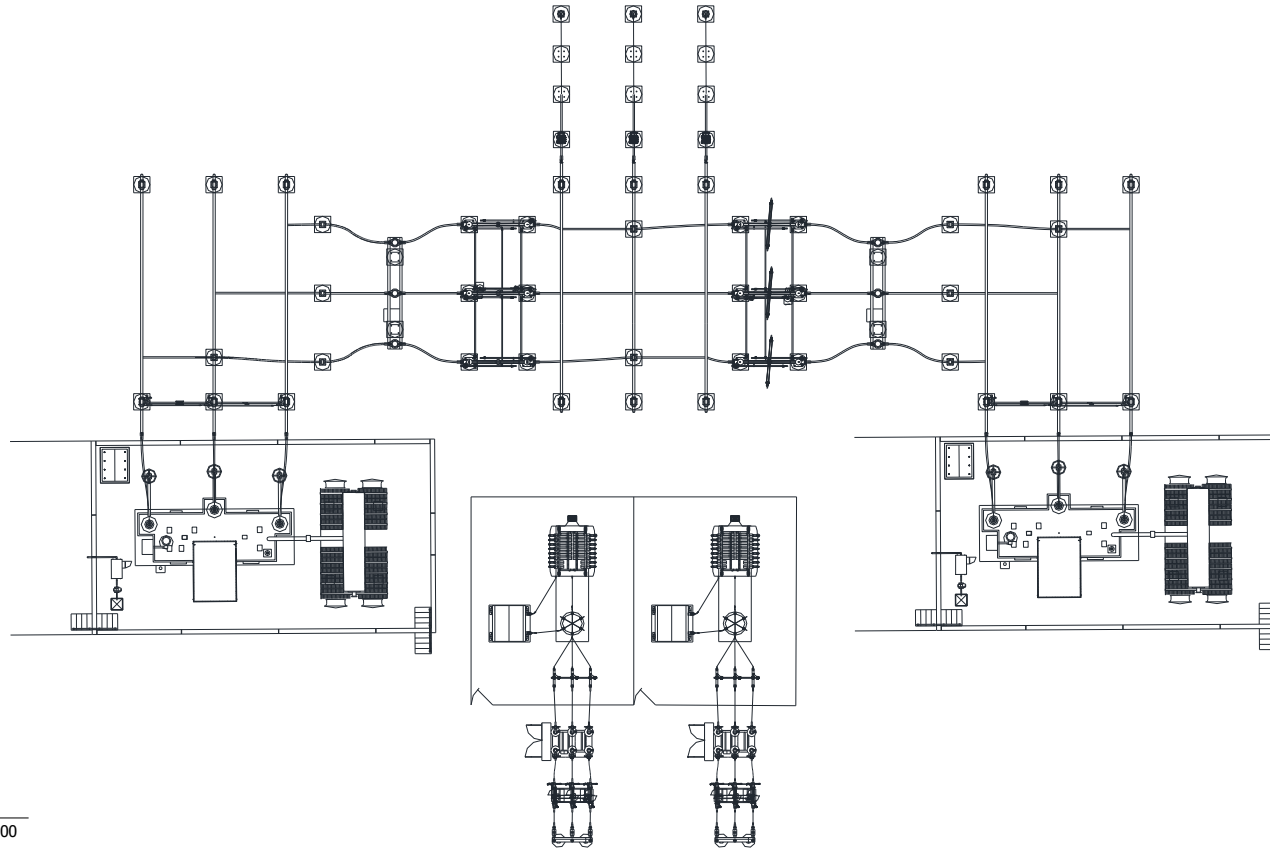
LEGEND:

- 1. CURRENT TRANSFORMER
- 2. CIRCUIT BREAKER
- 3. RACK STRUCTURE
- 4. BUSBAR SUPPORT STRUCTURE 220KV
- 5. 33/220 KV TRANSFORMER



33/220KV XFMR & FEEDER BAY - ELEVATION

1:300



33/220KV XFMR & FEEDER BAY – PLAN VIEW

1:300

NOTES:



AKAYSHA ENERGY PTY.
LTD.
10-20 GWYNNE ST
CREMORNE, VIC

DRAWN: T. MATOTEK
APPROVED:

8/01/2024

DRAWING TITLE: CONTROL AND SWITCH ROOMS ELEVATIONS

PROJECT: Elaine BESS

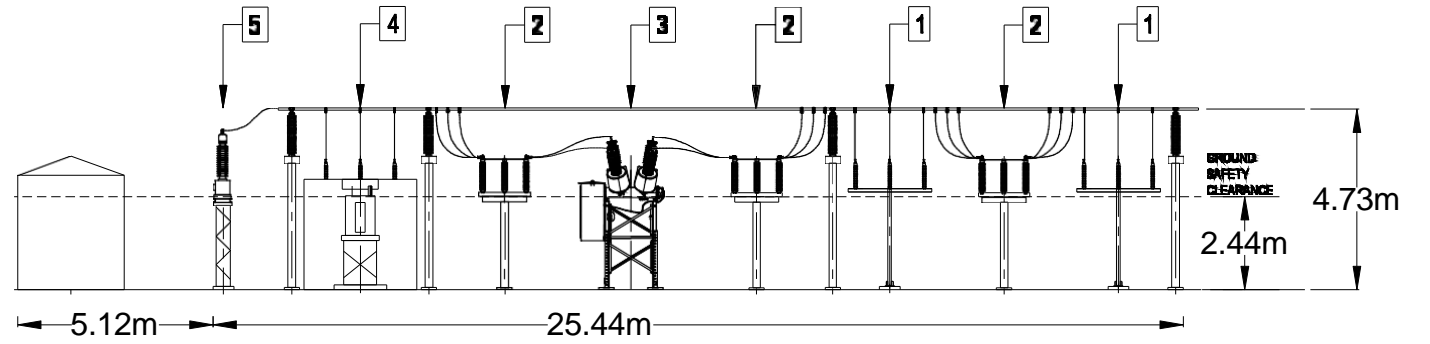
REV: 1.0

SHEET:

6 OF 7

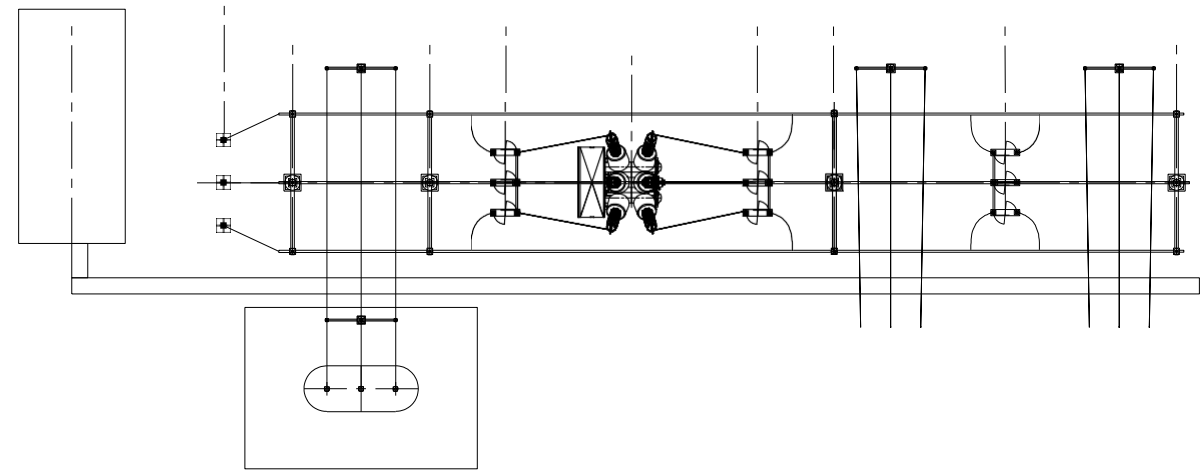
LEGEND:

- 1. BUSBAR SUPPORT STRUCTURE
- 2. DISCONNECTOR
- 3. CIRCUIT BREAKER
- 4. EARTHING TRANSFORMER
- 5. VOLTAGE TRANSFORMER 3/220KV/110V
- 6. BUSBAR SUPPORT STRUCTURE 220KV



33KV BUSBAR BAY - ELEVATION

1:200



33KV BUSBAR BAY - PLAN VIEW

1:200

NOTES:



AKAYSHA ENERGY PTY.
LTD.
10-20 GWYNNE ST
CREMORNE, VIC

DRAWN: T. MATOTEK
APPROVED:

8/01/2024

DRAWING TITLE: CONTROL AND SWITCH ROOMS ELEVATIONS

PROJECT: Elaine BESS

REV: 1.0

SHEET:

7 OF 7