

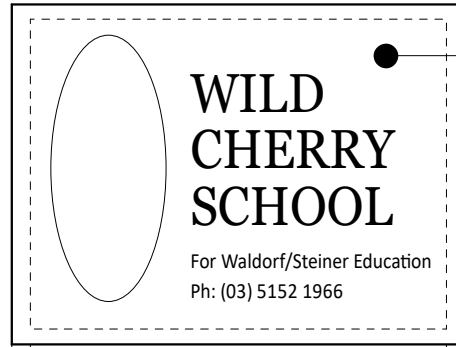
ADVERTISED PLAN



WCS SIGN PIC

1,200

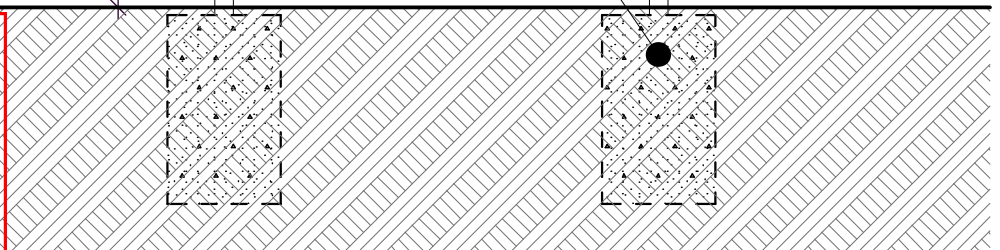
900
1,100



SIGNAGE COLOUR AND GRAPHICS AS PER PHOTO PROVIDED.

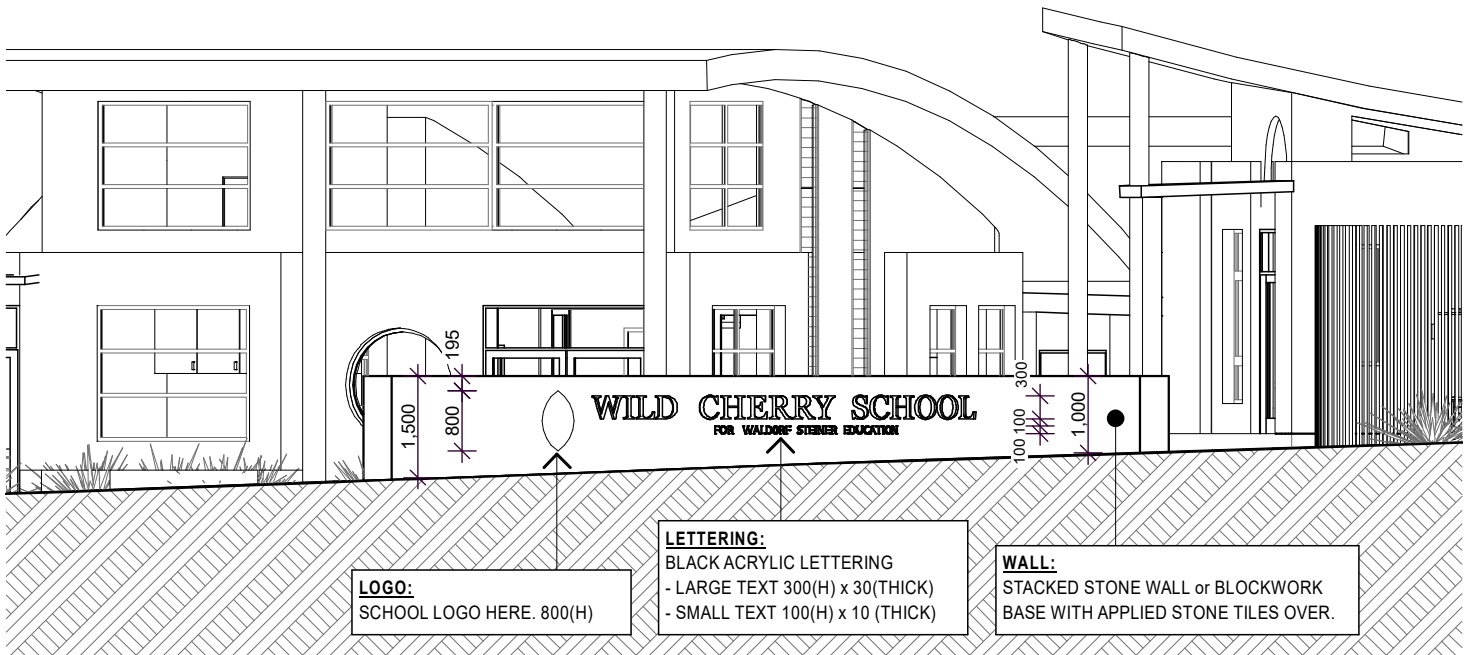
SIGN FIXED TO 75 SHS GALV. STEEL POSTS IN MASS CONC. PAD FOOTINGS. PAINT FINISH.

MASS CONC. FOOTINGS BY ENG.



SIGN No.1

This copied document to be made available for the sole purpose of enabling its consideration and review as part of a planning process under the Planning and Environment Act 1987. The document must not be used for any purpose which may breach any copyright



LOGO:
SCHOOL LOGO HERE. 800(H)

LETTERING:
BLACK ACRYLIC LETTERING
- LARGE TEXT 300(H) x 30(THICK)
- SMALL TEXT 100(H) x 10 (THICK)

WALL:
STACKED STONE WALL or BLOCKWORK BASE WITH APPLIED STONE TILES OVER.

SIGN No.2