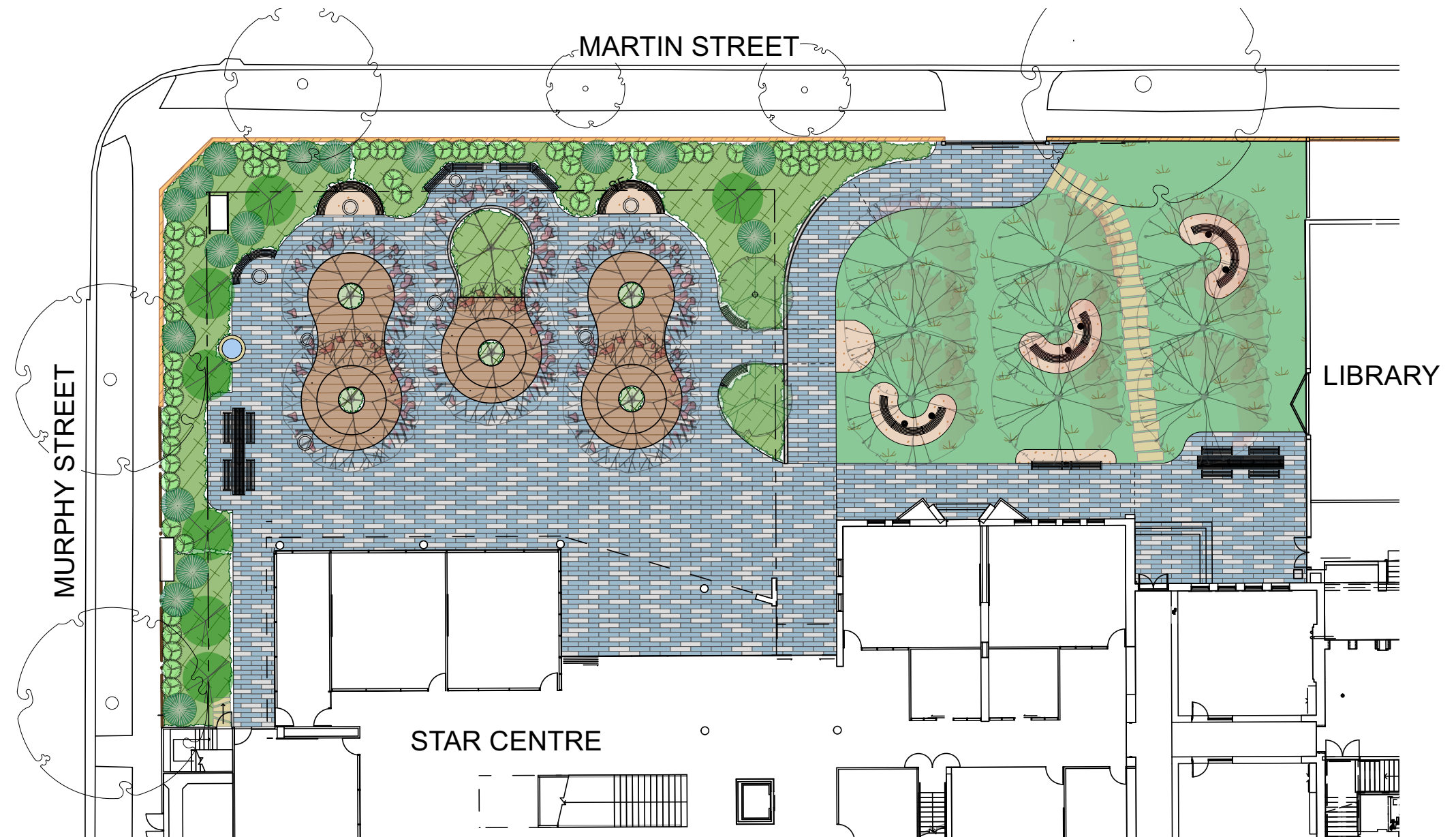


Star of the Sea College

Star Centre Landscape Design Submission

ADVERTISED
PLAN

4 May 2023



Ground Floor 143 Franklin Street
Melbourne Vic 3000

p. 9329 6844 f. 9329 6336

e. office@urbaninitiatives.com.au

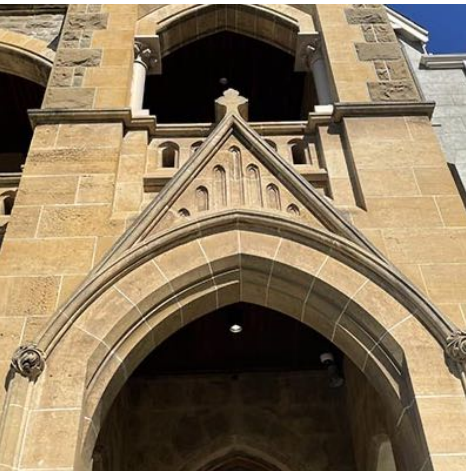


Prepared by:

In association with:



Ground Floor 143 Franklin Street
Melbourne Vic 3000
p. 9329 6844 f. 9329 6336
e. office@urbaninitiatives.com.au



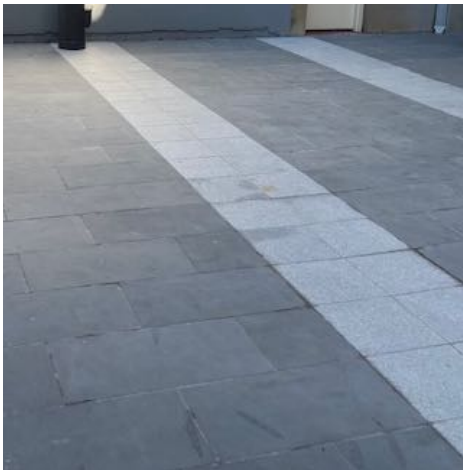
Arched forms



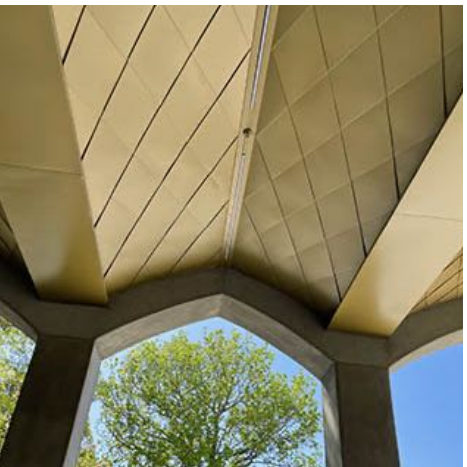
Cloister like spaces



Pattern, repetition and school identity



High quality materials and finishes



Pattern, texture and colour



Interesting details and material use

We acknowledge and respect Aboriginal and Torres Strait Islander Peoples of Australia, as the traditional custodians of our lands, waters, and seas.

We recognise their ability to care for Country and their deep spiritual connection with Country.

We honour Elders past and present whose knowledge and wisdom ensure the continuation of Aboriginal and Torres Strait Islander cultures.

Project Name	Star of the Sea College Star Centre Landscape Design Submission
Revision	00
Date of Issue	4 May 2023

Revision No.	Date	Detail of Revisions	Reviewed By
00			



CONTENTS

1	EXISTING TREES PLAN	5
2	OVERALL PLAN	6
3	NORTHERN AREA PLAN	7
4	NORTHERN PODIUM TERRACED SEATING DECKS	8
5	SOUTHERN AREA PLAN	9
6	PRECEDENTS - EXISTING CONTEXT	10
7	PRECEDENTS - FURNITURE	11
8	PRECEDENTS - PAVEMENTS	12
9	PRECEDENTS - PLANTING	13
10	PRECEDENTS - PLANTING	14
11	PLANT SCHEDULE	15



Star of the Sea College

Star Centre

Design Development

The landscape of The Star Centre is designed to provide a multitude of effective social and learning spaces for the school community. It has been designed to be inviting, comfortable, and flexible in its use.

The landscape is intended to be relevant to its context. Most plant species are of local origin, reducing water use and maintenance, and improving habitat. Materials and furnishings are proposed that integrate with the existing school aesthetic, it is intended that these will be sourced from local manufacturers. The materials, shapes, and treatments relate to successful aspects of the existing built environment, consolidating the school's visual identity, while also engaging with the evolving aesthetic of the new works associated with The Star Centre.

The relationship between the proposed landscape and the existing features of the site is important. One aspect of this is the streetscapes of Martin and Murphy Streets, particularly the street trees, these provide an excellent 'borrowed landscape', building on these terrific tree canopies within our site is one of the key drivers of the design. This will improve shade, cooling, amenity, habitat, and a sense of connection beyond the site.

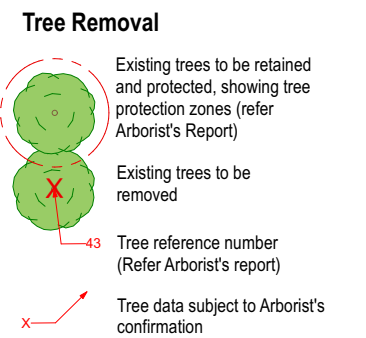
Design Objectives

- Creating inclusive and adaptable social spaces.
- Creating opportunities for reconnection with nature.
- Creating outdoor spaces that are responsive to their particular location.
- Creating simple forms and spaces that offer varied uses.
- Designing in response to the microclimates of each space.
- Referencing effective existing materials and forms that feature at the campus.
- Considering circulation, access, and key views through the campus.
- Being sensitive to the relationship between landscape and adjoining buildings.
- Providing landscapes that consider the maintenance capabilities of the school.
- Selecting durable, high quality materials that are of local origin where possible.
- Using appropriate plants that have low water requirements.

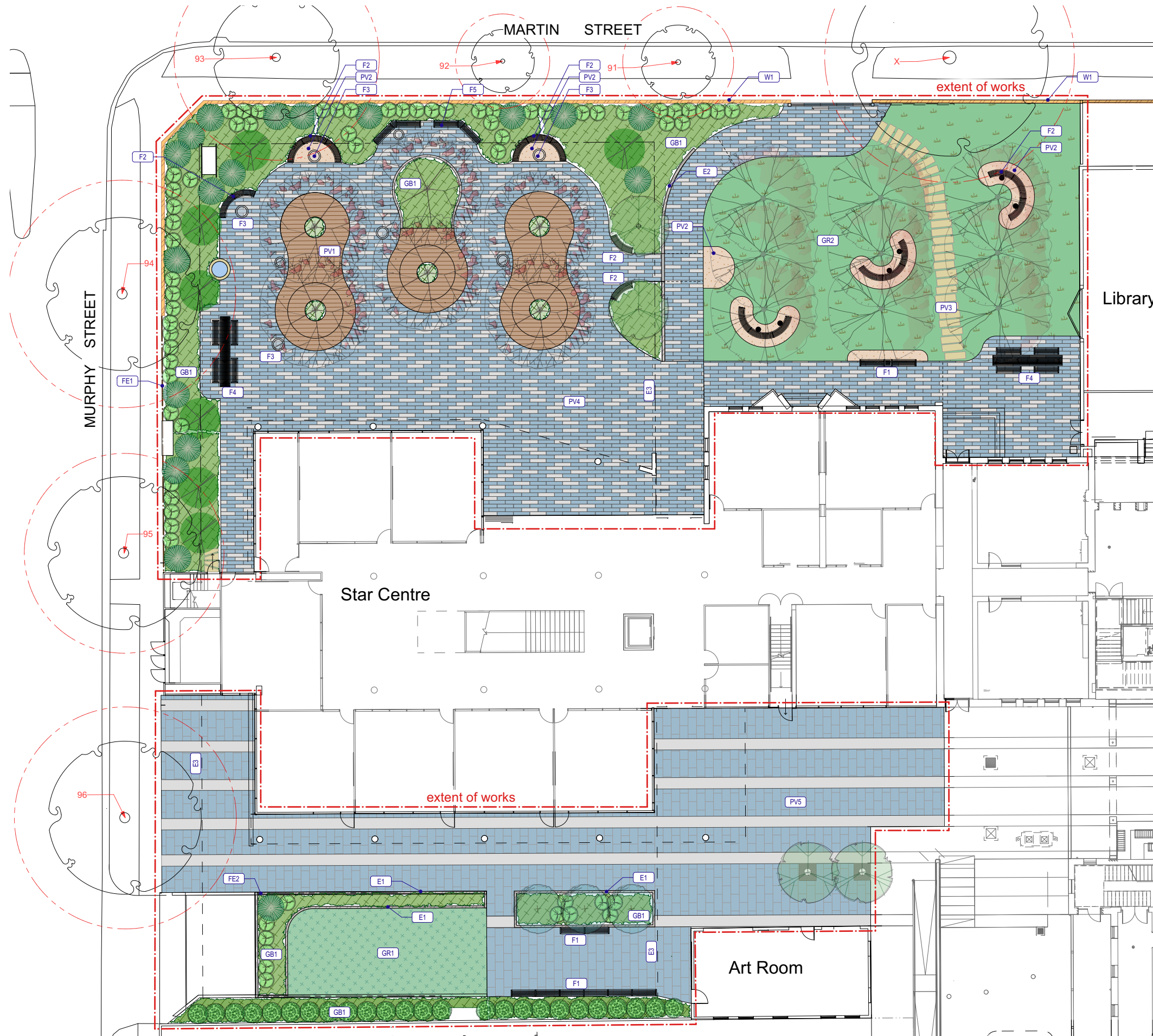


Site Plan

n.t.s.



2 OVERALL PLAN



Legend

Edges & Kerbs

- E1 Concrete Edge Type 1 (Flush)
- E2 Concrete Edge Type 2 (Raised nom.200-600 ht.)
- E3 Extent of underground carpark

Pavements & Surfaces

- PV1 Timber Decking
- PV2 Gravel pavement
- PV3 Rock Inset
- PV4 Exposed aggregate concrete pavement
- PV5 Stone pavement to match existing

Furniture & Fixtures

- F1 Bench seat
- F2 Curved bench seat
- F3 Circular low table (moveable or fixed)
- F4 Communal table with power provision
- F5 Indented seating

Landscape Walls

- W1 Existing brick boundary wall

Garden Beds & Grassing

- GB1 Garden Bed with plants as scheduled
- Shrubs showing indicative locations
- GR1 Synthetic Turf
- GR2 Instant Turf
- Proposed trees

Fencing

- FE1 Fence (steel fin) (refer Architect's drawings)
- FE2 Fence (steel post with stainless steel mesh) (refer Architect's drawings)

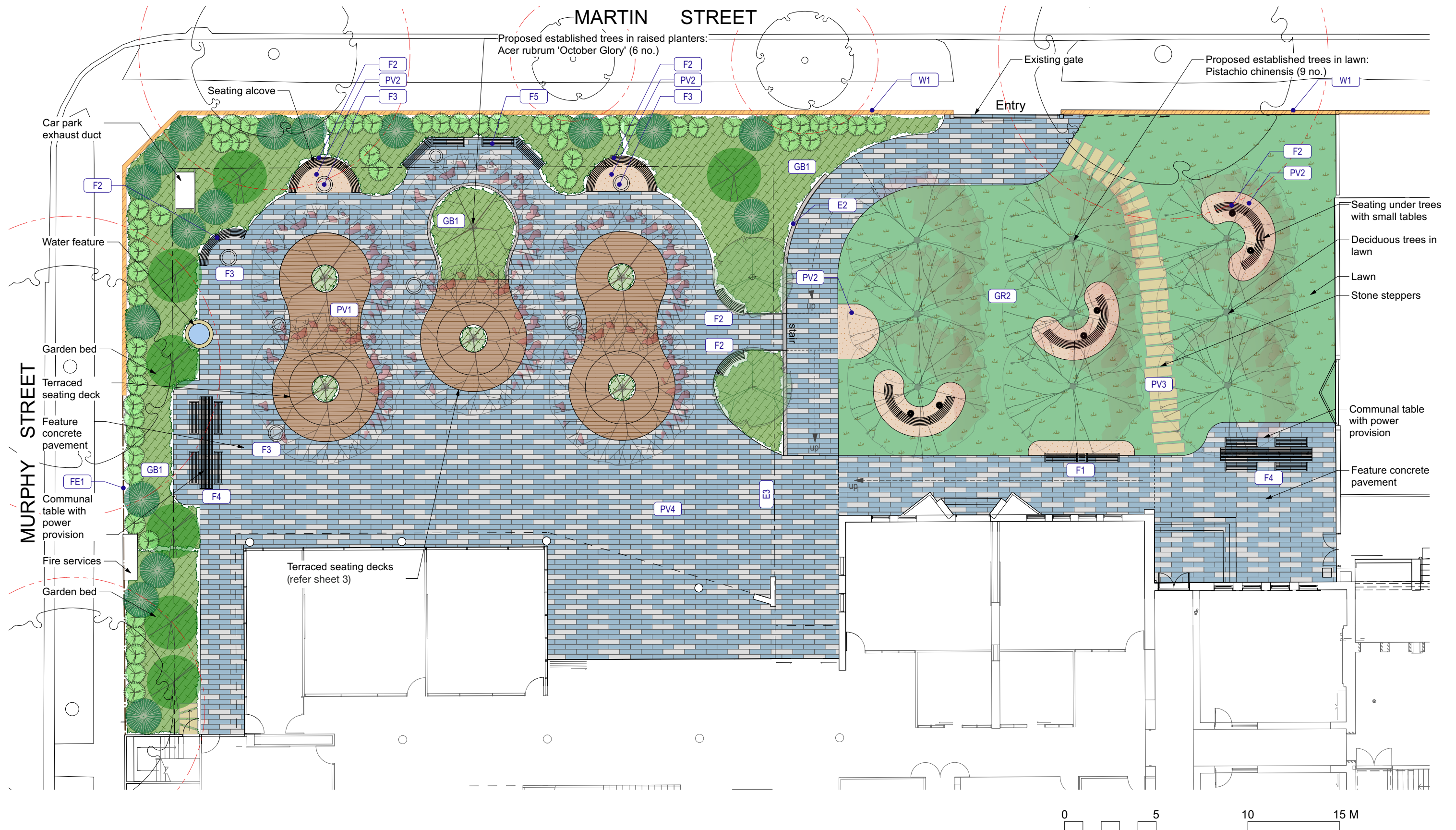
Trees

- Existing trees to be retained and protected, showing tree protection zones & reference number (refer Arborist's Report)
- 43 Tree data subject to Arborist's confirmation

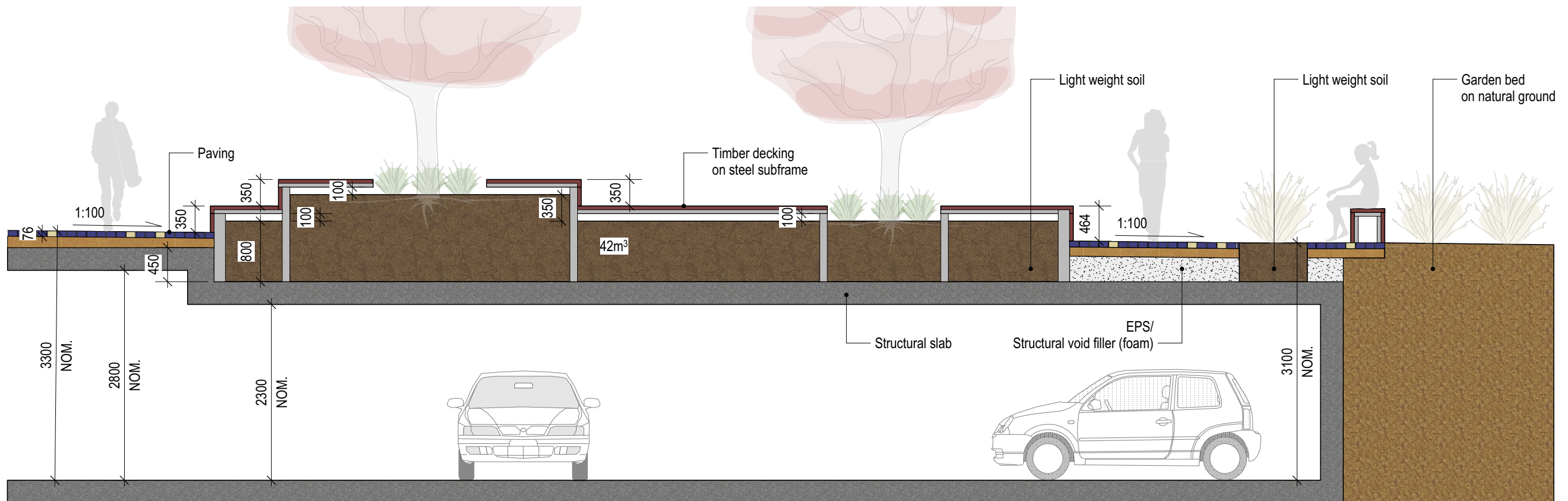
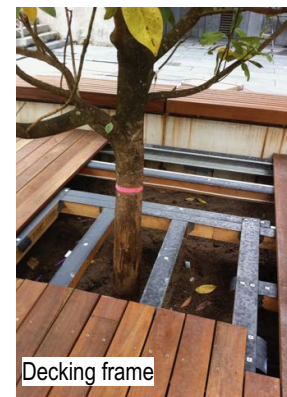
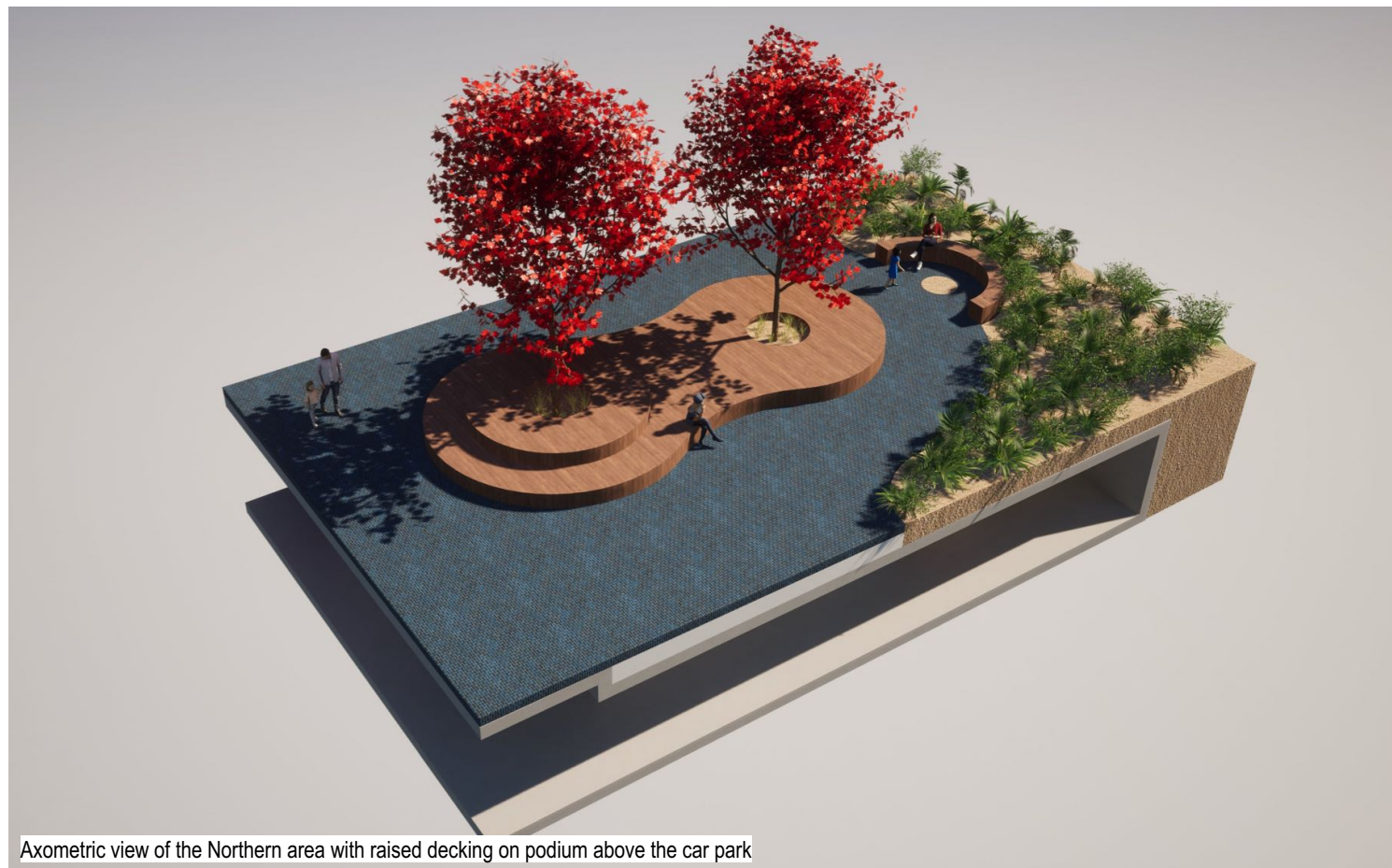
0 5 10 15 M



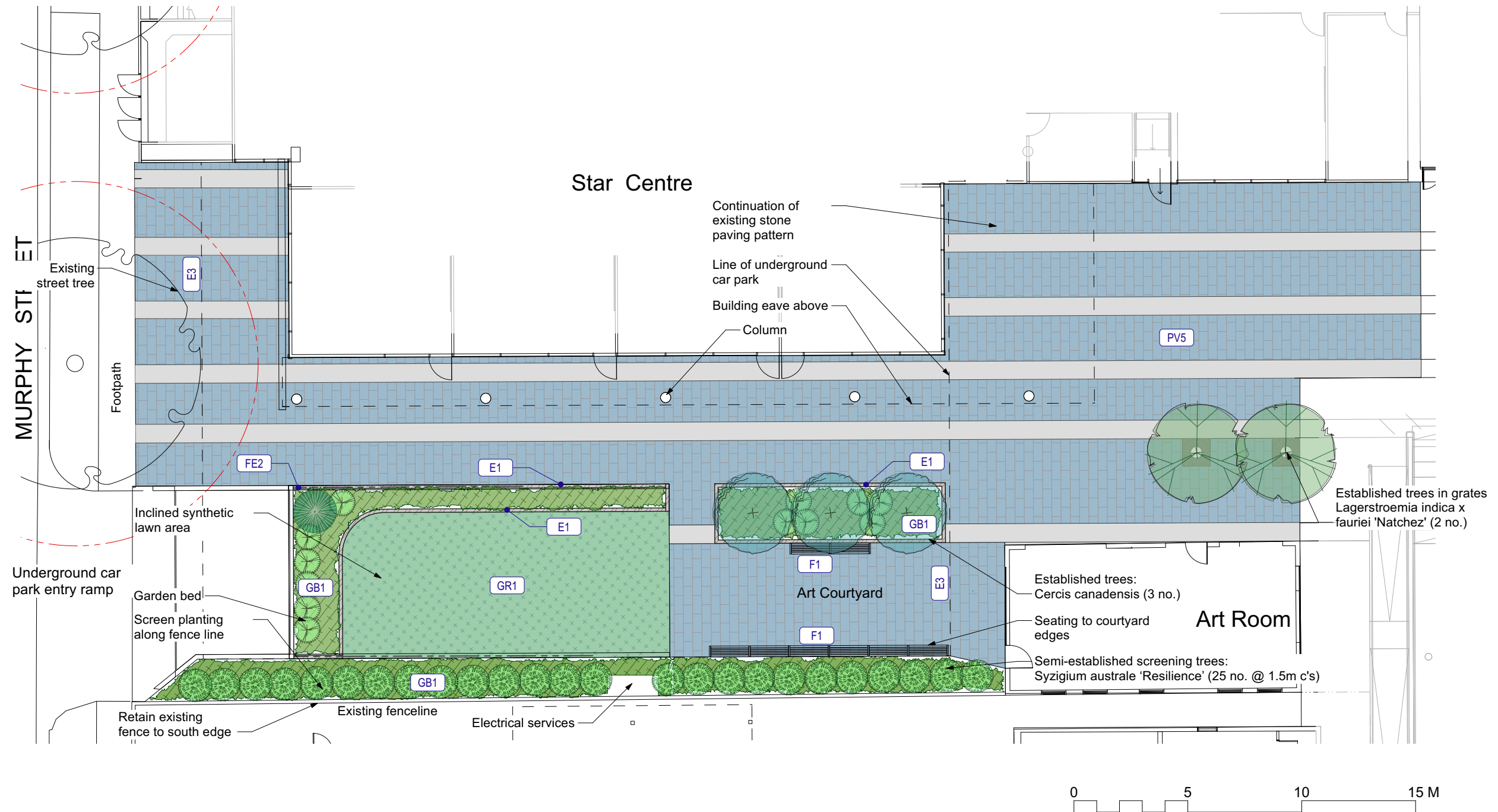
3 NORTHERN AREA PLAN



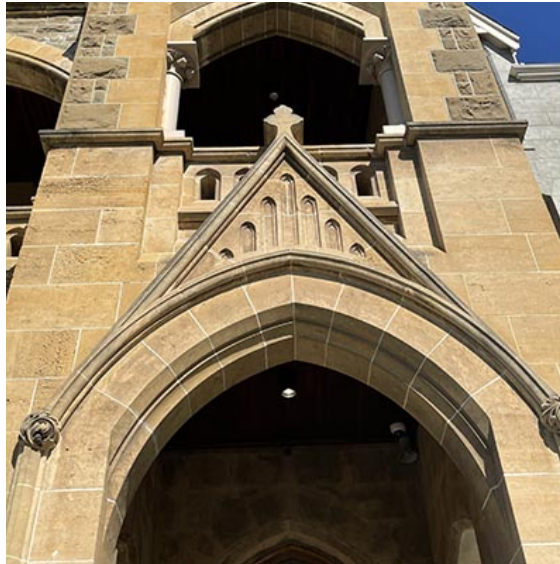
4 NORTHERN PODIUM TERRACED SEATING DECKS



5 SOUTHERN AREA PLAN



6 PRECEDENTS - EXISTING CONTEXT



Arched forms



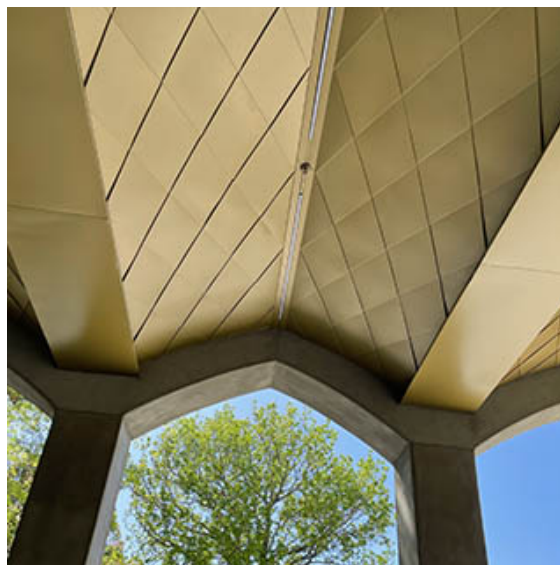
Cloister like spaces



Pattern, repetition and school identity



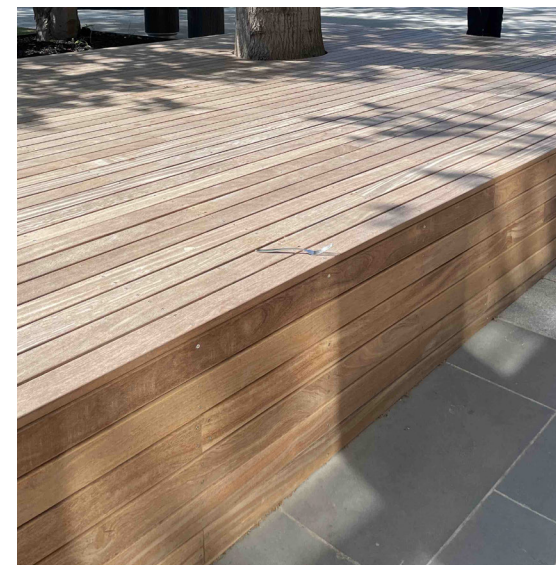
High quality materials and finishes



Pattern, texture and colour



Attention to detail and material selection



Decked seat areas



Interesting details and material use

7 PRECEDENTS - FURNITURE



Curved seating for seating nooks (SFA 'Mall') (F2)



Bench seat (SFA 'Aria') (F1)



Bench seat (SFA 'Aria' seat system) (F5)



Communal table (SFA 'Aria') (F4)



Tables movable or fixed (Tait 'Jil') (F3)



Small fixed tables installed near lawn seating areas (SFA 'Cafe')



Rubbish bins (to match existing)

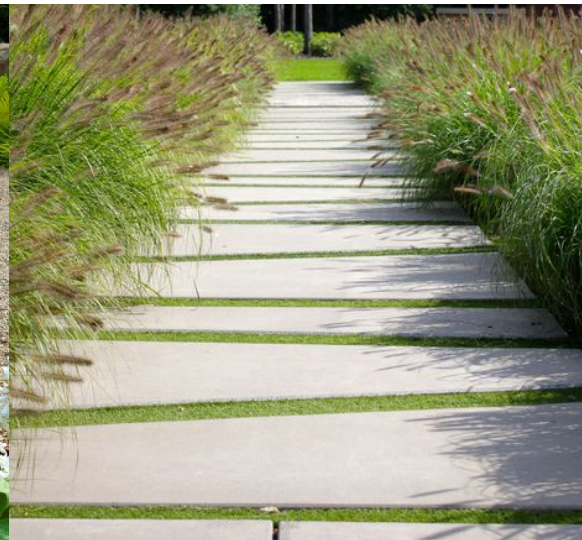
8 PRECEDENTS - PAVEMENTS



Exposed aggregate concrete pavement. (PV4)



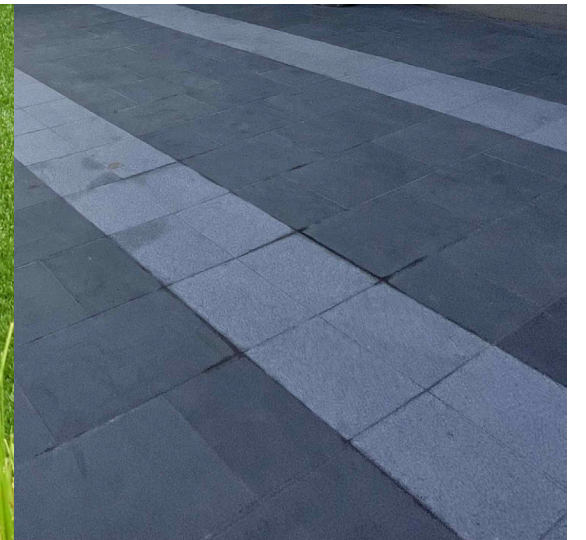
Consolidated gravel pavement. (PV2)



Stone pavement with grass between. (PV3)



Synthetic grass. (GR2)



Existing stone pavement. (PV5)

9 PRECEDENTS - PLANTING

Trees - northern landscape



Trees - southern landscape



Climbers



Groundcovers



10 PRECEDENTS - PLANTING

Shrubs



Goodenia ovata

Correa reflexa

Correa alba

Banksia integrifolia 'Roller Coaster'

Clivia miniata



Banksia 'Birthday Candles'

Acacia acinacea

Viminaria juncea

Cotinus coggygia 'Grace'

Euphorbia 'Tasmanian Tiger'

Grasses and strap-leaved plants



Patersonia occidentalis

Dichelachne crinita

Dianella revoluta

Lomandra tanika

Miscanthus sinensis 'Gracillimus'

11 PLANT SCHEDULE

Plant Schedule				
Botanical name	Common name	Mature size (h x w) mts.	Density	Install size
Trees				
Acer Rubrum 'October Glory'	Canadian Maple	12 x 8	refer plan	1000 L
Cercis canadensis (Forest Pansy)	Forest Pansy	5 x 3	refer plan	100 L
Lagerstroemia indica x fauriei 'Natchez'	Crepe Myrtle (White)	5 x 4	refer plan	200 L
Pistachio chinensis	Chinese Pistachio	8 x 6	refer plan	300 L
Syzigium australe 'Resilience'	Resilience Lily Pilly	4 x 2	refer plan	45 L
Groundcovers				
Brachyscome parvula	Coast Daisy	0.3 x 0.3	8 /sq.m	140mm
Carpobrotus modestus	Inland Pigface	0.3 x 0.6	4 /sq.m	140mm
Einadia nutans	Nodding Saltbush	0.15 x 1.0	1 /sq.m	140mm
Kennedia prostrata	Running Postman	0.15 x 1.0	1 /sq.m	140mm
Myoporum parvifolium	Boobialla	0.15 x 1.0	1 /sq.m	140mm
Senecio serpens	Blue Chalksticks	0.3 x 0.9	1 /sq.m	140mm
Shrubs				
Atriplex cinerea	Coastal Saltbush	1.5 x 1.5	1 /sq.m	200mm
Acacia acinacea	Gold Dust Wattle	2.0 x 1.5	.8 /sq.m	200mm
Banksia integrifolia 'Roller Coaster'	Banksia	0.4 x 2.0	.5 /sq.m	200mm
Banksia spinulosa 'Birthday Candles'	Dwarf Hairpin Banksia	0.5 x 1.5	.8 /sq.m	200mm
Clivia miniata	Natal Lily	0.6 x 0.9	1 /sq.m	200mm
Correa reflexa	Native Fuschia	1.0 x 1.5	.8 /sq.m	200mm
Correa alba	White Correa	1.5 x 1.5	.8 /sq.m	200mm
Cotinus coggygria 'Grace'	Eurasian Smoketree	3.0 x 3.0	.3 /sq.m	200mm
Euphorbia 'Tasmanian Tiger'	-	1.5 x 1.5	.8 /sq.m	200mm
Goodenia ovata	Hop Goodenia	1.0 x 1.5	.8 /sq.m	200mm
Raphiolepis indica	Indian Hawthorn	2.0 x 2.0	.5 /sq.m	200mm
Viminaria juncea	Native Broom	3.0 x 2.0	.5 /sq.m	200mm
Grasses & Strap-leaved plants plants				
Dichelachne crinita	Longhair Plume Grass	0.3 x 0.3	8 /sq.m	140mm
Dianella revoluta	Black Anther Flax Lily	1.0 x 1.5	1/sq.m	140mm
Lomandra tanika	Tanika Lomandra	0.6 x 0.6	4 /sq.m	140mm
Miscanthus sinensis 'Gracillimus'	Chinese Silver Grass	1.5 x 1.5	.8 /sq.m	140mm
Patersonia occidentalis	Purple Flag	0.8 x 0.6	4 /sq.m	140mm
Climbers				
Parthenocissus tricuspidata	Boston Ivy	10 x 6	1 /sq.m	200mm

Note: species selection will be subject to availability.

