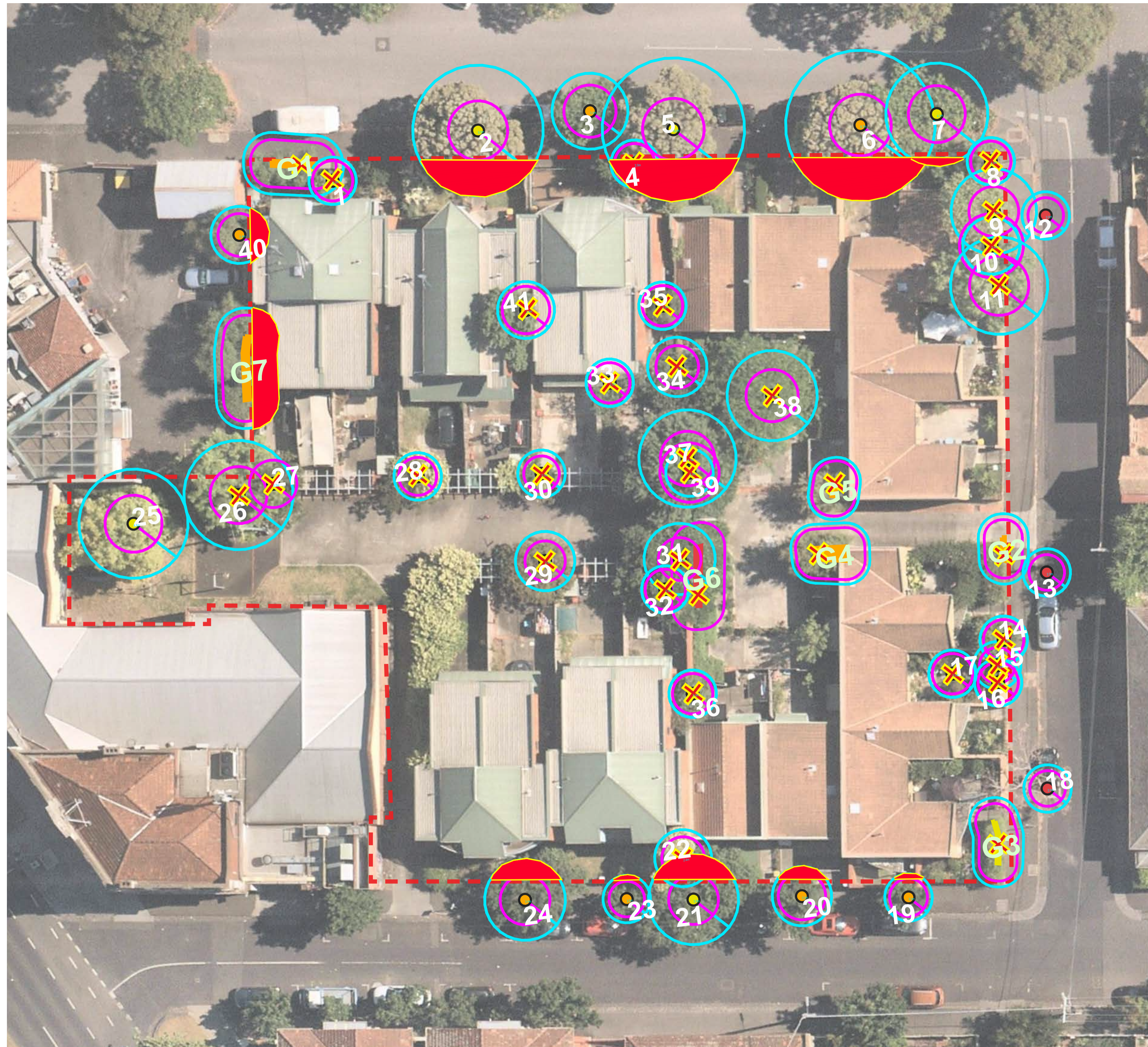


EXISTING TREE PLAN



Existing Tree Schedule

treeid	species	comm_name
1	Ficus sp.	Fig
2	Melaleuca styphelioides	Prickly-leaved Paperbark
3	Melia azedarach	White Cedar
4	Prunus armeniaca	Apricot
5	Melaleuca styphelioides	Prickly-leaved Paperbark
6	Melaleuca styphelioides	Prickly-leaved Paperbark
7	Melia azedarach	White Cedar
8	Betula pendula	Silver Birch
9	Fraxinus angustifolia	Narrow-leaved Ash
10	Phoenix canariensis	Canary Island Date Palm
11	Fraxinus angustifolia	Narrow-leaved Ash
12	Eucalyptus sp.	Gum Tree
13	Eucalyptus sp.	Gum Tree
14	Fraxinus angustifolia	Narrow-leaved Ash
15	Pyrus calleryana	Callery's Pear
16	Pyrus calleryana	Callery's Pear
17	Brachychiton rupestris	Queensland Bottle Tree
18	Eucalyptus sideroxylon	Red Ironbark
19	Pyrus calleryana	Callery's Pear
20	Pyrus calleryana	Callery's Pear
21	Pyrus calleryana	Callery's Pear
22	Ligustrum lucidum	Shining Privet
23	Pyrus calleryana	Callery's Pear
24	Pyrus calleryana	Callery's Pear
25	Robinia pseudoacacia 'Frisia'	Black locust
26	Robinia pseudoacacia 'Frisia'	Black locust
27	Lagerstroemia indica	Crape Myrtle
28	Lagerstroemia indica	Crape Myrtle
29	Lagerstroemia indica	Crape Myrtle
30	Lagerstroemia indica	Crape Myrtle
31	Lagerstroemia indica	Crape Myrtle
32	Ficus carica	Common Fig
33	Ficus carica	Common Fig
34	Prunus sp.	Almond, Cherry, Peach, Plum
35	Olea europaea	Olive
36	Ficus carica	Common Fig
37	Fraxinus angustifolia	Narrow-leaved Ash
38	Gleditsia triacanthos	Honey Locust
39	Wisteria sp.	Wisteria
40	Alnus incana	Grey Alder
41	Ulmus sp.	Elm Tree

Legend

- LANDSCAPE EXTENT OF WORKS
- EXISTING TREE TO BE RETAINED (REFER TO ARBORIST REPORT FOR FURTHER INFORMATION)
- EXISTING TREE TO BE REMOVED (REFER TO ARBORIST REPORT FOR FURTHER INFORMATION)

treeid	species	comm_name
G1	Pittosporum tenuifolium	Kohuhu
G2	Callistemon viminalis	Weeping Bottlebrush
G3	Pittosporum tenuifolium	Kohuhu
G4	Leptospermum petersonii	Lemon-scented Tea-tree
G5	Leptospermum petersonii	Lemon-scented Tea-tree
G6	Wisteria sp.	Wisteria
G7	Alnus incana	Grey Alder

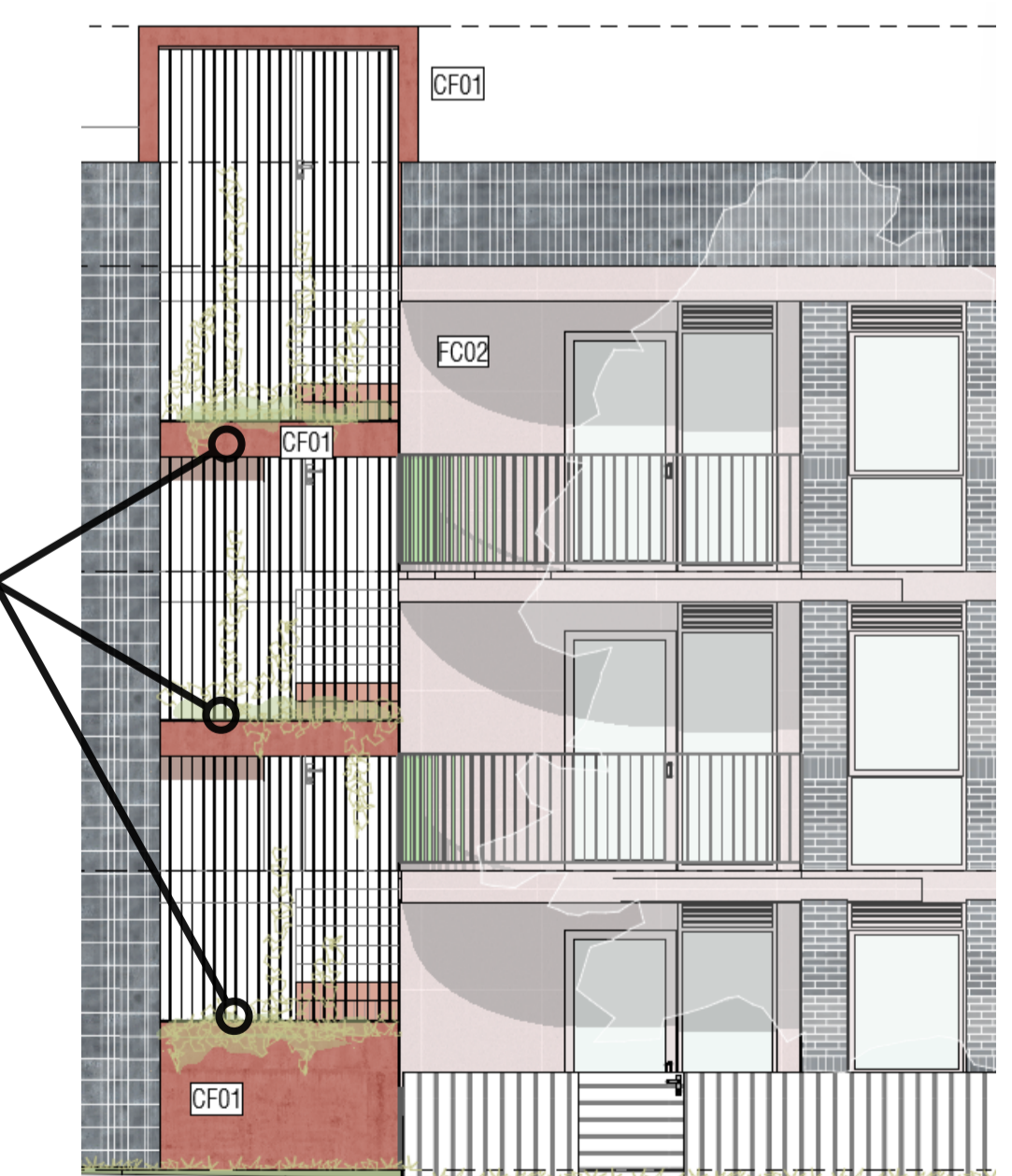
NOTE: THE ABOVE EXISTING TREE SCHEDULE HAS BEEN EXTRACTED FROM TREELOGIC'S REPORT ARBORICULTURAL ASSESSMENT REPORT 18TH JANUARY 2024 REF 013174. REFER TO TREELOGIC'S REPORT FOR FURTHER INFORMATION REGARDING ALL EXISTING TREE INFORMATION (INCLUDING SURROUNDING STREETScape AREAS)

PROPOSED CONCEPT PLAN



Legend

-  PROPOSED DECIDUOUS NATIVE CANOPY TREE (MELIA AZEDARACH 'ELITE'), REFER TO PLANTING SCHEDULE
-  PROPOSED TALL EVERGREEN NATIVE TREES, REFER TO PLANTING SCHEDULE
-  PROPOSED SMALL EVERGREEN NATIVE SCREENING SHRUB LIGHTLY CLIPPED TO MAINTAIN FORMAL COLUMNAR SHAPE., REFER TO PLANTING SCHEDULE
-  1No. EXISTING TREE (ROBINIA PSEUDOACACIA 'FRISIA') TO BE RETAINED WITHIN SITE BOUNDARY. NOTE: ALL SURROUNDING EXISTING STREET TREES TO BE RETAINED
-  01 PROPOSED PROPRIETARY RAISED STEEL PLANTERS FOR EDIBLE GARDEN BY RESIDENTS
-  02 GRANITIC GRAVEL PAVING (PERMEABLE) LAID OVER FCR BASE
-  03 OUTDOOR COMMUNITY AREA WITH INSITU SEATING & URBAN CANOPEE PLANTERS (X2) WITH CLIMBING PLANTS TRAINED TO SUPPORTING TRELLIS STRUCTURE
-  04 PROPOSED MODULAR PAVERS LAID OVER INSITU SLAB TO BALCONY AREAS
-  05 PROPOSED RAISED GARDEN BED PLANTERS OVER BASEMENT CARPARK WITH ALL NATIVE PLANTING, IMPORTED TOPSOIL, MULCH & IRRIGATION . - SMALL PLANTERS TO INCLUDE GRC & LARGER PLANTERS TO INCLUDE INSITU CONCRETE PLANTER SEATING WALLS
-  06 PROPOSED GARDEN BED WITH DEEP SOIL. ALL NATIVE PLANTING WITH IMPROVED TOPSOIL, MULCH & IRRIGATION .
-  07 PROPOSED HARDSTAND EXPOSED AGGREGATE COLOURED CONCRETE PAVING
-  LANDSCAPE EXTENT OF WORKS

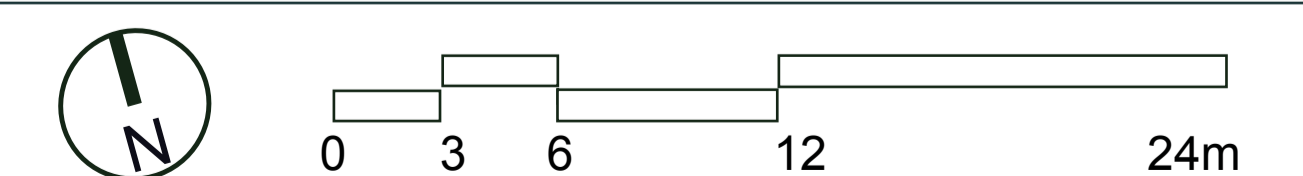


INDICATIVE ELEVATION PREPARED BY ARCHITECT'S (H2a) SHOWING x3 PLATER BOXES TO STAIRWELL - N.T.S

Landscape Architecture Client



HOUSINGFIRST GROSVENOR STREET Landscape Concept Package 05.02.2024



Drawing LA02 | Scale 1:200 @ A1 / 1:400 @ A3 | Rev A

PROPOSED SOFTSCAPE PLANTING EXAMPLES



Agonis flexuosa 'After Dark'



Tristanopsis laurina 'Luscious'



Brachychiton populneus x *acerifolius* 'Bella Pink'



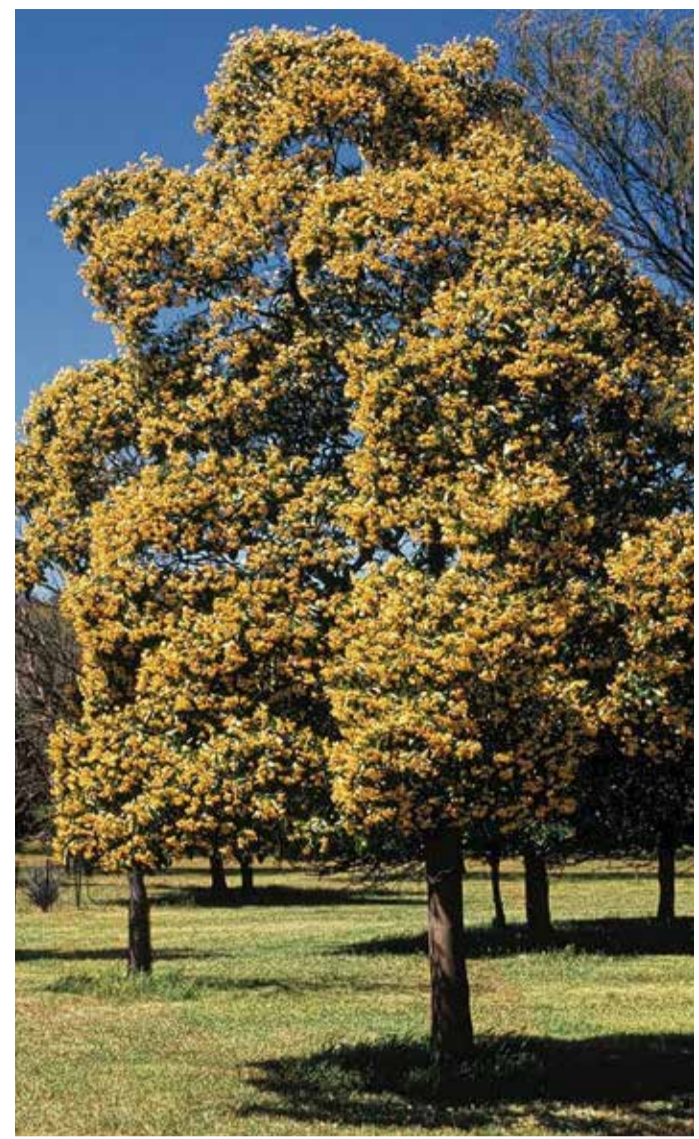
Brachychiton populneus



Corymbia ficifolia 'Wildfire'



Melia azedarach 'Elite' PBR



Hymenosporum flavum



Callistemon 'Slim'



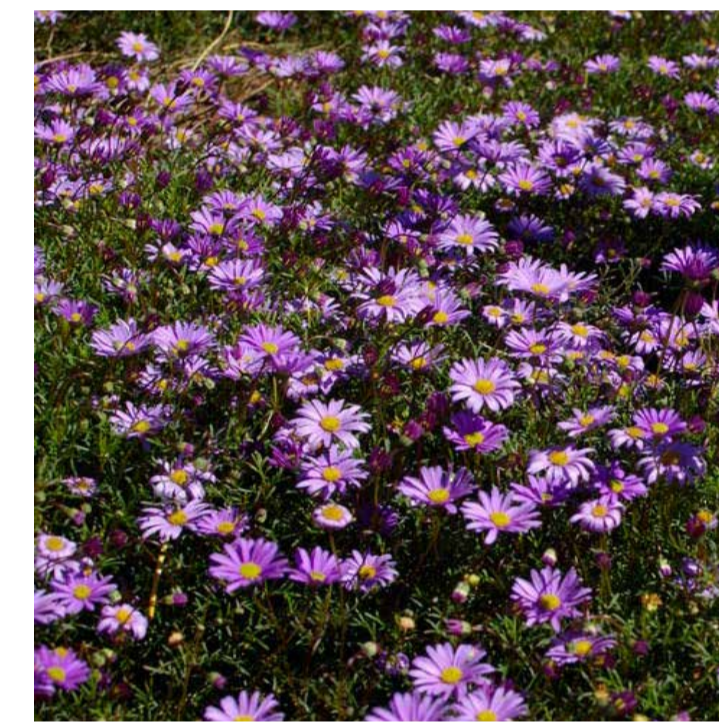
Syzygium australe 'Pinnacle' & *Syzygium australe* 'Backyard Bliss'



Syzygium (shown clipped for formal screen)



Westringia spp.



Brachyscome 'Mauve Delight'



Banksia 'Coastal Cushion'



Alyogyne 'Blue Heeler'



Pandorea jasminoides 'Slender Bells White' grown vertically onto fencing & building stairwell planter boxes/cables



Correa reflexa 'Clearview Giant'



Lomandra longifolia 'Tanika'



Hymenosporum flavum 'Gold Nugget'



Viola hederacea, Native violet



Acacia cognata 'Mini Cog'



Syzygium 'Tiny Trev' (shown clipped for formal low hedge)



Mass planting example with layered form



Nephrolepis cordifolia



Patersonia occidentalis



Goodenia ovata (Prostrate form)



Scaevola 'Mauve Clusters'



Dianella spp.



Doryanthes excelsa



Chrysocephalum apiculatum

Landscape Architecture Client

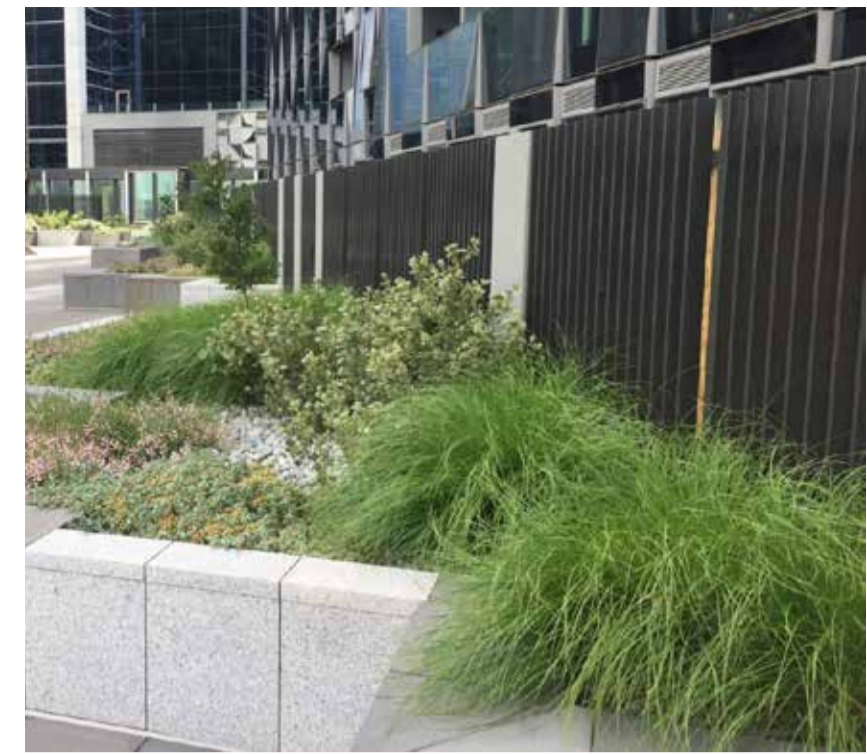


**HOUSINGFIRST GROSVENOR STREET
Landscape Concept Package 05.02.2024**

PROPOSED LANDSCAPE EXAMPLE IMAGES



Steel batten fencing to private open space boundaries



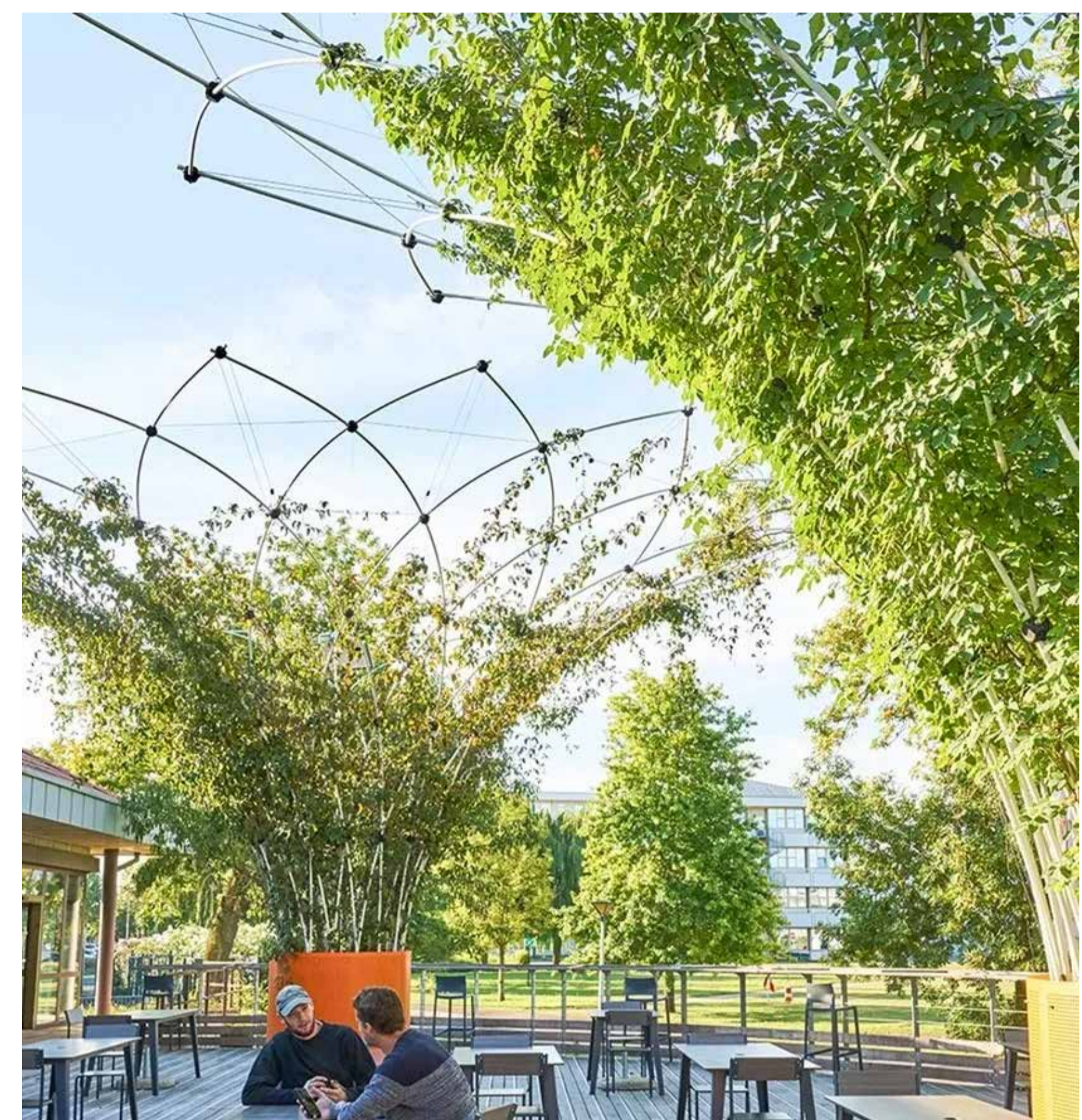
Fencing softened with native planting where possible



Off white institute raised planters over basement areas providing a seating edge typically 500mm above FSL



Smaller planters may include off white GRC over basement areas



Urban Canopee planters (small size) with climbing plants trained to supporting trellis structure for shade over communal seating area



Proprietary seating with arm / backrest & recycled plastic battens



Insitu concrete planter/seating with & recycled plastic battens, option to include small accompanying tables



Precast concrete square pavers laid over concrete slab



All insitu concrete steps to include DDA compliant TGSIs, nosing & stainless steel handrails

Proposed planting species list

CODE	BOTANICAL NAME	COMMON NAME	HEIGHT (m)	SPREAD (m)	Size	DENSITY	NUMBER
TREES/UPRIGHT SHRUBS							
BPA	<i>Brachychiton populneus x acerifolius 'Bella Pink'</i>	Hybrid Flame/Kurrajong Tree	8m	4m	75L x 2.5m Tall	N/A	TBC
BP	<i>Brachychiton populneus</i>	Kurrajong Tree	8-10m	10m	75L x 2.5m Tall	N/A	TBC
CFW	<i>Corymbia ficifolia 'Wildfire'</i>	Dwarf Flowering Gum	5m	3-4m	75L x 2.0m Tall	N/A	TBC
CVS	<i>Callistemon viminalis 'Slim'</i>	Bottle Brush	3	1-1.5m	300mm x 1m	N/A	TBC
HF	<i>Hymenosporum flavum</i>	Native Frangipani	6-8m	5-6m	75L x 2.5m Tall	N/A	TBC
MAE	<i>Melia azedarach 'Elite'</i>	White Cedar	10m	8m	75L x 2.5m Tall	N/A	TBC
SAP	<i>Syzygium australe 'Pinnacle'</i>	Upright Lilly Pilly	5m	2-2.5m	300mm x 1m	N/A	TBC
SAB	<i>Syzygium australe 'Backyard Bliss'</i>	Upright Lilly Pilly	3	1	300mm x 1m	N/A	TBC
TLL	<i>Tristania laurina 'Luscious'</i>	Water Gum	6m	4m	75L x 2.5m Tall	N/A	TBC
						TOTAL	TBC
GROUND COVERS/SMALL SHRUBS							
ACM	<i>Acacia Cognata 'Mini Cog'</i>	Acacia 'Mini Cog'	0.75m	1m	150mm pot	3/m ²	TBC
ABH	<i>Alyogyne 'Blue Heeler'</i>	Native Hibiscus	0.4m	1m	150mm pot	3/m ²	TBC
BCC	<i>Banksia 'Coastal Cushion'</i>	Drawf Hairpin Banksia	0.5m	1m	150mm pot	4/m ²	TBC
BMD	<i>Brachyscome 'Maue Delight'</i>	Native Daisy	0.3m	0.5m	150mm pot	5/m ²	TBC
CR	<i>Correa reflexa 'Clearview Giant'</i>	Common Correa	1m	1.2m	150mm pot	3/m ²	TBC
CVG	<i>Callistemon viminalis 'Green John'</i>	Bottle Brush 'Green John'	1m	0.6m	150mm pot	5/m ²	TBC
CYA	<i>Chrysocephalum apiculatum</i>	Common Everlasting	0.3m	0.5m	150mm pot	5/m ²	TBC
DC	<i>Dianella 'Blaze'</i>	Flax Lilly	0.5m	0.5m	150mm pot	5/m ²	TBC
GO	<i>Goodenia ovata (Prostrate form)</i>	Hop Leaf Goodenia	0.5m	0.6m	150mm pot	5/m ²	TBC
HFG	<i>Hymenosporum flavum 'Gold Nugget'</i>	Dwarf Native Frangipani	0.75m	0.75m	150mm pot	4/m ²	TBC
LS	<i>Lomandra 'Tanika'</i>	Fine Leaf Mat Rush	0.7	0.7m	150mm pot	5/m ²	TBC
NC	<i>Nephrolepis cordifolia</i>	Fishbone fern	0.75m	1m	150mm pot	4/m ²	TBC
OM	<i>Patersonia occidentalis</i>	Long Purple-flag	0.75m	1m	150mm pot	5/m ²	TBC
SMC	<i>Scaevola 'Maue Clusters'</i>	Fan Flower	0.5m	1m	150mm pot	4/m ²	TBC
STT	<i>Syzygium 'Tiny Trev'</i>	Lilly Pilly	0.75-1 m	1m	150mm pot	4/m ²	TBC
VLH	<i>Viola hederacea</i>	Native Violet	0.1m	1m	150mm pot	3/m ²	TBC
WF	<i>Westringia fruticosa 'Grey Box'</i>	Coastal Rosemary 'Grey Box'	0.4m	0.4m	150mm pot	5/m ²	TBC
						TOTAL	TBC
CLIMBING PLANT							
PJ	<i>Pandorea jasminoides 'Slender Bells White'</i>	Bower Plant	2m	3m	150mm pot	N/A	TBC



Granitic gravel paving



Exposed aggregate coloured concrete paving (green Envirocrete) supplied by Boral



Proprietary raised corrugated metal planter 'Kingspan' size: 800mm high x 600mm wide x 1600mm long. 'Shale grey' colour for productive communal gardens



Metal planters with built in wicking system to save water usage & frequency of watering intervals



Intimate seating areas provided on slab over car park basement with raised planters & native planting