

This copied document to be made available for the sole purpose of enabling its consideration and review as part of a planning process under the Planning and Environment Act 1987. The document must not be used for any purpose which may breach any copyright

ADVERTISED PLAN

Abideen College

Landscape Design for Town Planning

Revision: TP-01

Issued: 24 / 11 / 2023

Prepared by rushwright associates

**This copied document to be made available
 for the sole purpose of enabling
 its consideration and review as
 part of a planning process under the
 Planning and Environment Act 1987.
 The document must not be used for any
 purpose which may breach any
 copyright**

CONTENTS

SITE CONTEXT & DESIGN INTENT 03
 SITE CONDITIONS03
 DESIGN INTENT03

LANDSCAPE FRAMEWORK 04
 SITE ECOLOGY & SUSTAINABILITY..... 04
 WATER STORY ELEMENTS..... 04
 LANDSCAPE STATES / QUALITIES 04

MASTER PLAN 05
 GROUND LEVEL LANDSCAPE PLAN (1:800) 05

STAGE 1 06
 LANDSCAPE PLAN & DESIGN INTENT (1:400)..... 06
 SECTION (1:200) 07
 MATERIALS 08
 INDICATIVE MATERIAL PALETTE..... 09
 INDICATIVE PLANTING PALETTE - TREES & PALMS 10
 INDICATIVE PLANTING PALETTE - SHRUBS & GRASS..... 11

Rev	Date	Purpose/Comment	Issued By
-----	------	-----------------	-----------

TP-01	24.11.2023	Town Planning Issue	MR

Disclaimer:
 While every reasonable effort has been made to ensure that this document is correct at the time of printing. RWA has relied on considerable third party information and disclaim any and all liability to any person in respect of anything or the consequences of anything done or omitted to be done in reliance upon the whole or any part of this document.

**ADVERTISED
 PLAN**

SITE CONTEXT & DESIGN INTENT

SITE CONDITIONS

The site is a greenfield parcel nestled in a residential precinct with sizable open space to the north that may suit future sporting ovals, courts, and fields. The site slopes from southwest to northeast with a swale to the Fuschia Drive footpath. An additional retarding basin sits on the western parcel.

The Ecological Vegetation Class for this site in Rockbank within the Victorian Volcanic Plain bioregion is the Plains Grassland, marked by largely treeless graminoid and herb flora.

DESIGN INTENT

The role of the proposed school landscape includes the functions of external spaces alongside consideration of the symbolism and place of gardens and productive gardens in Islamic traditions. The design responds to the concept of the landscape (and the world) as "a greater mosque" - as a place of prayer.

While a contemporary approach is adopted to building a school landscape in an Australian education context, traditional elements from Islamic culture and gardens, such as water and particular plants and trees are also included in the design, in order to enrich the student experience and life of the college community.

Inspiration from the Koran quotations, the symbolism of the "Paradise Garden" (Jannah), and the other types of Islamic Gardens and places - the Bustan (formal garden) are taken into consideration for developing the school landscape. Kitchen gardens, orchards and bagh, the wadi (the oasis gardens of the Middle East) are also provided, embedding the Islamic culture into the landscape.

The types of functional spaces that are considered include active play spaces, outdoor courts, nature play spaces, meditation and reflection areas, social seating spaces, productive gardens, and places of ablution and refreshment to rejuvenate the spirit.

A water narrative is used as a site-wide landscape design strategy to connect distinct outdoor college spaces, mark places of arrival and structure the levels and grading across the site. The design embeds passive reuse and recycling of water in plantings and will be a key element in the nature play spaces.

Stage 1 includes the entry space to Fuchsia Drive, establishing the central spine and the axial relationship to the future Masjid. a shared gathering space a curtilage to the Junior Learning and Admin building, outdoor play associated with the primary school, and the entry carpark.

The flow of movement between interior and external spaces and views from the interior to gardens and planting are accommodated.

This copied document to be made available for the sole purpose of enabling its consideration and review as part of a planning process under the Planning and Environment Act 1987. The document must not be used for any purpose which may breach any copyright

ADVERTISED PLAN



Department of Sustainability and Environment
EVC/Bioregion Benchmark for Vegetation Quality Assessment
Victorian Volcanic Plain bioregion
EVC 132_61: Heavy-soils Plains Grassland

Description:
Tussock vegetation mostly less than 1 m tall dominated by largely graminoid and herb life forms. Occupies cracking basalt soils prone to seasonal waterlogging in areas receiving at least 500 mm annual rainfall.

Life Form	#Sp	%Cover	LF Code
Large Herb	2	5%	LH
Small or Prostrate Herb	4	20%	SH
Large Tufted Graminoid	1	5%	LTG
Medium to Small Tufted Graminoid	13	40%	MTC
Medium to Tiny Non-Tufted Graminoid	4	5%	MHG
Prostrate/Creeping and Soil-Cover*	18	20%	BS

* Note: treat as one life form in this EVC

LF Code	Species typical of at least part of EVC range	Common Name
SH	<i>Ammannia dumosa</i>	Common Blue-flower
LH	<i>Artemisia canadensis</i>	Why Doo
MHG	<i>Chlorophytum comosum</i>	Lemon Beard Heads
SH	<i>Asplenium platyneuron</i>	Sheep's Burr
MHG	<i>Lepidosiphon squamatus</i>	Scaly Autumn
SH	<i>Asplenium ovatum</i>	Scaly Throat
SH	<i>Saxifraga domata</i>	Smooth Saxifrage
SH	<i>Lichia radiata</i>	Proton Oaklet
LTG	<i>Themeda alopecuroides</i>	Kestrel Grass
MTC	<i>Chlorophytum comosum</i>	Long-tail Puffin-grass
MTC	<i>Themeda zosterifolia</i>	Kangaroo Grass
MTC	<i>Ascholobolus capillaris</i>	Common Wattle-grass
MTC	<i>Artemisia canadensis</i>	Common White-grass
MHG	<i>Chlorophytum comosum</i>	Common Blue-flower
MHG	<i>Themeda zosterifolia</i>	Stender Sun-orbit
MHG	<i>Themeda zosterifolia</i>	Common Over-orbit
SH	<i>Convolvulus anabasiensis</i>	Pink Broomhead

Recruitment:
Epicotyl/Fru or Grating. Desirable period between disturbances is 5 years.

Organic Litter:
5% cover

Department of Sustainability and Environment
EVC/Bioregion Benchmark for Vegetation Quality Assessment
Victorian Volcanic Plain bioregion
EVC 132_63: Low-rainfall Plains Grassland

Description:
Tussock vegetation mostly < 1 m tall dominated by largely graminoid and herb life forms. Occupies cracking basalt soils prone to seasonal waterlogging in areas receiving < 500 mm annual rainfall.

Life Form	#Sp	%Cover	LF Code
Small Herb	1	5%	SH
Large Herb	9	20%	LH
Small or Prostrate Herb*	3	10%	SH
Large Tufted Graminoid	1	5%	LTG
Medium to Small Tufted Graminoid**	2	5%	MTC
Large Oblongate life form	18	20%	BS

* Note: treat as one life form in this EVC

LF Code	Species typical of at least part of EVC range	Common Name
SH	<i>Artemisia canadensis</i>	Common Blue-flower
SH	<i>Artemisia canadensis</i>	Berry Softball
LH	<i>Phalaris microbachne</i>	Foster's Heads
MHG	<i>Asplenium platyneuron</i>	Sheep's Burr
MHG	<i>Asplenium platyneuron</i>	Winged Buttercup
MHG	<i>Chlorophytum comosum</i>	Lemon Beard Heads
SH	<i>Saxifraga domata</i>	Smooth Saxifrage
SH	<i>Quercus parviflora</i>	Small-leaved Chestnut
SH	<i>Chlorophytum comosum</i>	Proton Oaklet
SH	<i>Guzmania junceaefolia</i>	Cat-tail Goodenia
LTG	<i>Themeda alopecuroides</i>	Kestrel Grass
MTC	<i>Chlorophytum comosum</i>	Rough Spear-grass
MTC	<i>Ascholobolus capillaris</i>	Archie Spear-grass
MTC	<i>Themeda zosterifolia</i>	Rigid Fescue
MTC	<i>Ascholobolus capillaris</i>	Brown-back Wattle-grass
LTG	<i>Themeda alopecuroides</i> ssp. <i>alpina</i>	Hardy Cerebrata
LTG	<i>Convolvulus anabasiensis</i>	Pink Broomhead

Recruitment:
Epicotyl/Fru or Grating. Desirable period between disturbances is 5 years.

Organic Litter:
5% cover



Views From Innovation Ave.



LANDSCAPE FRAMEWORK

SITE ECOLOGY & SUSTAINABILITY

Landscape Framework: Site Ecology and Sustainability.

With site geology as a starting point, site soil characteristics are generated. Local rainfall and climate considerations, available runoff from ground surfaces, rooftops, and permeable surfaces help guide what plants can be grown and selected.

These plant selections will address drought conditions, be hardy and include local natives, be productive and provide shade and replenishment. The harvesting and recycling of the campus plants (seeds and compost) will feed back into the school kitchen gardens, to rejuvenate site soils and complete the cycle.

WATER STORY ELEMENTS

LANDSCAPE FRAMEWORK: WATER NARRATIVE

Productive landscapes that manipulate water runoff occur throughout the site. They comprise waterplay, channels, and sensory play lines navigating across exaggerated level changes and terracing. Reflection places, crossings and thresholds, ablution places and natural springs, and permeable hard surfaces serve as moments along this sequence.

LANDSCAPE STATES / QUALITIES

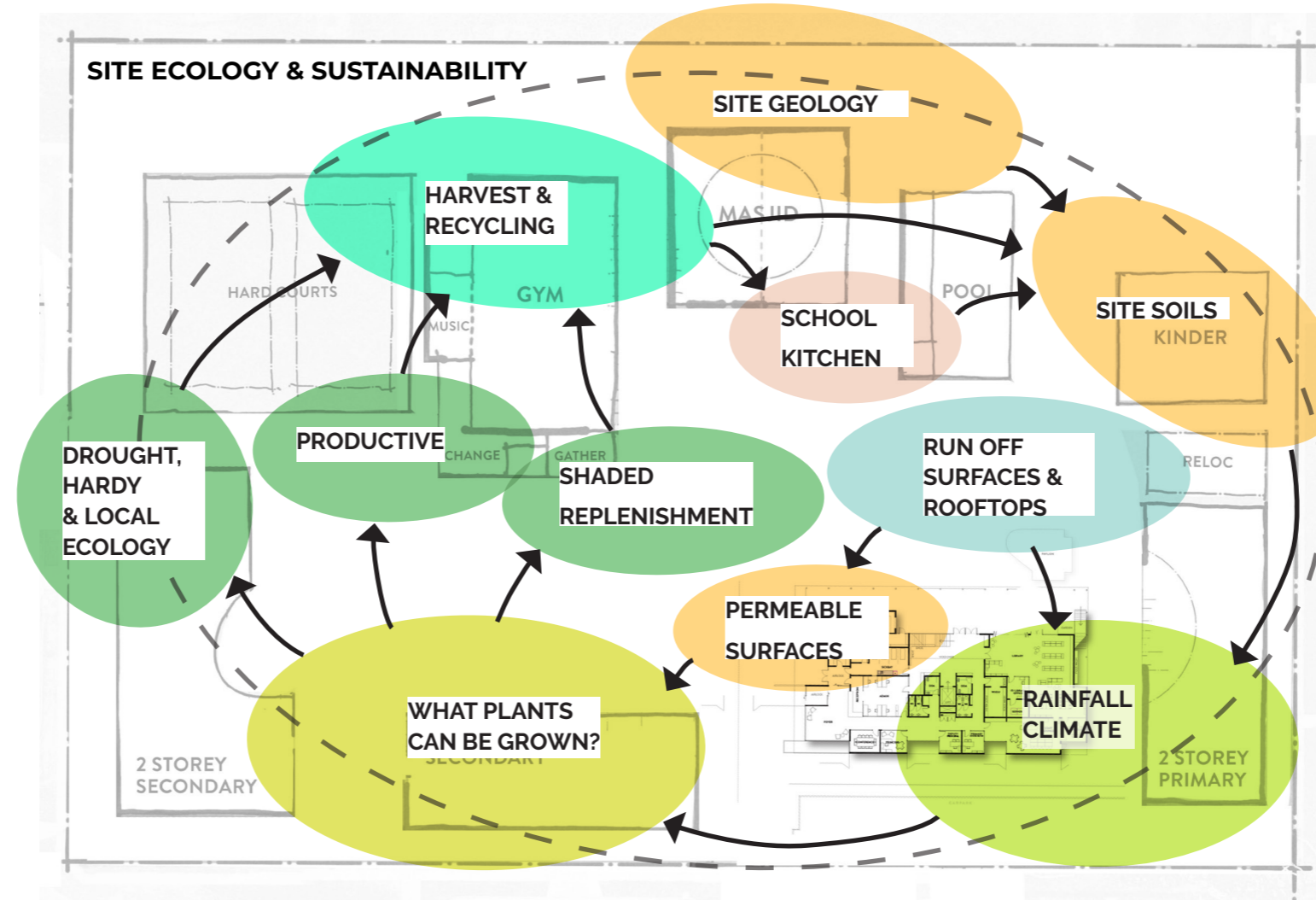
Landscape Framework: Landscape States and Qualities

A dry perimeter landscape creates a strong robust identity for the campus on the boundaries and entries.

As one moves into the campus interior, the "Wadi" - oasis or spring - becomes the dominant landscape character, providing productive gardens and playscapes and using the available recycled and articulated water supply to sustain a rich variety of fruit trees and tree groves.

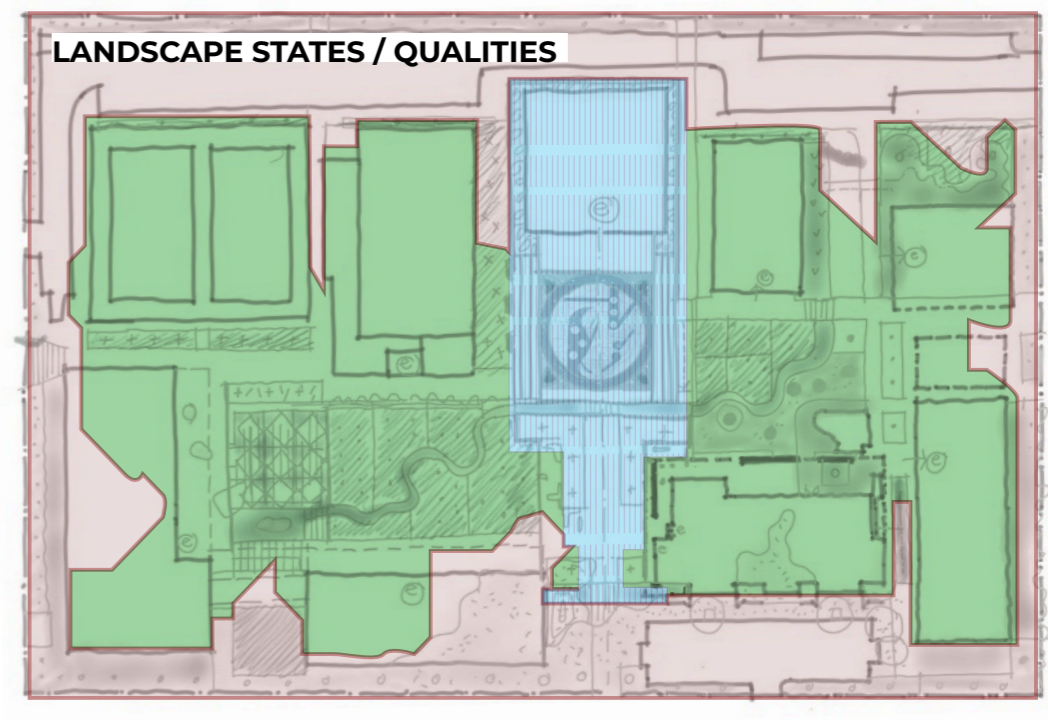
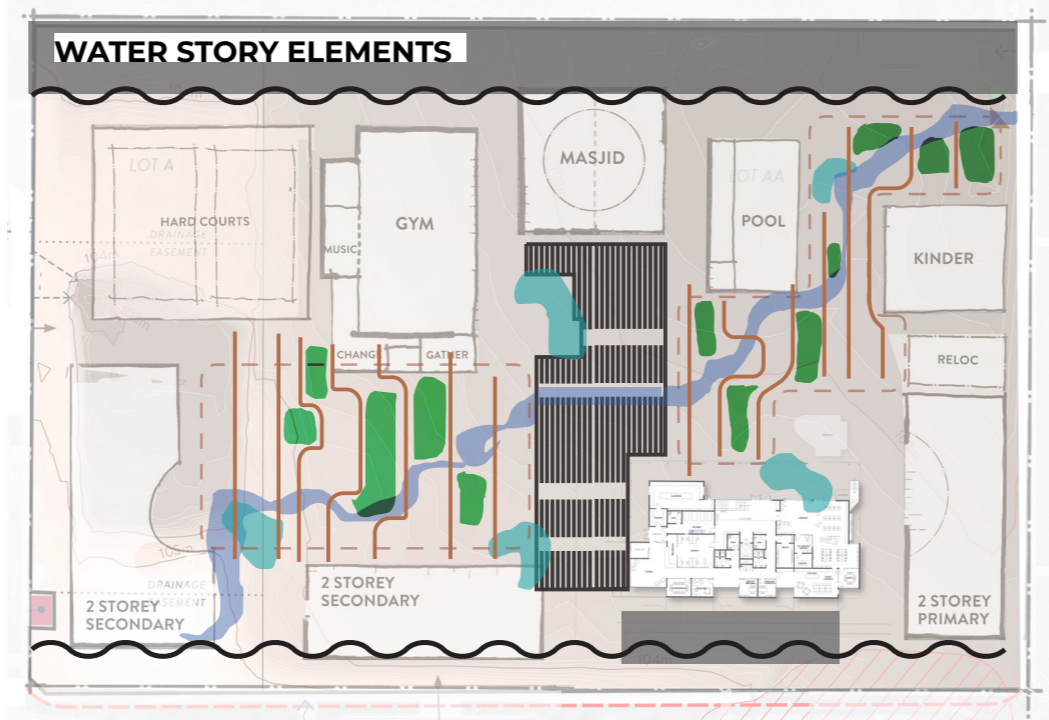
The Paradise Garden - Jannah - is placed at the symbolic core of the college, with more formal material qualities and tree arrangements.

Movement through the school, through these zones, will be to experience changes in environment and character: dry to irrigated, rough to smooth, wild & raw to decorative, bleached to saturated colour, random to ordered, permeable to impermeable.



This copied document to be made available for the sole purpose of enabling its consideration and review as part of a planning process under the Planning and Environment Act 1987. The document must not be used for any purpose which may breach any copyright

ADVERTISED PLAN



- Productive Landscape manipulate water runoff
- Exaggerated Level Changes / Terracing
- Waterplay / Channels / Sensory Play
- Reflection Places
- Crossings / Thresholds
- Ablution Places / Natural Springs
- Permeable Hard Surface

- Dry Perimeter (Desert - Rock Swales / Silver Bleached Landscape)
- Wadi / Working & Playscape
- Paradise Garden (Jannah)

MASTERPLAN

GROUND LEVEL LANDSCAPE PLAN

The whole school landscape masterplan is shaped by the water narrative, utilising the natural drainage of the site and connecting local landscape ecology with traditional Islam garden water elements (formal and agricultural).

A spring originates between the secondary buildings to the southwestern edge of the site, within the STEAM garden, where student experiments and observation may explore the water origins, sources and technology that support water use across the college site.

The spring flows into the top oasis-wadi gardens to form the focus of the secondary college courtyard. The levels drop west to east to form a set of tree groves and terraces, to be flood-irrigated using water channels and passive irrigation.

The main water (drainage) line then crosses the main entry and Masjid axis, separating the central arrival courts from the Masjid terrace. One crosses the channel, which is planted out formally with native reeds and swamp cypress, to enter the Masjid environs.

The drainage line continues through the junior court and play spaces Here the drainage line becomes an archetypal Australian "Dry creek bed" and Nature Play space. The seasonal water line is edged by natural rocks timber, logs, stepping logs and shade trees.

Beyond the Junior play zone the "water line" is finally expressed by a reflecting pond filled with reeds and papyrus as a backdrop to the pool building.

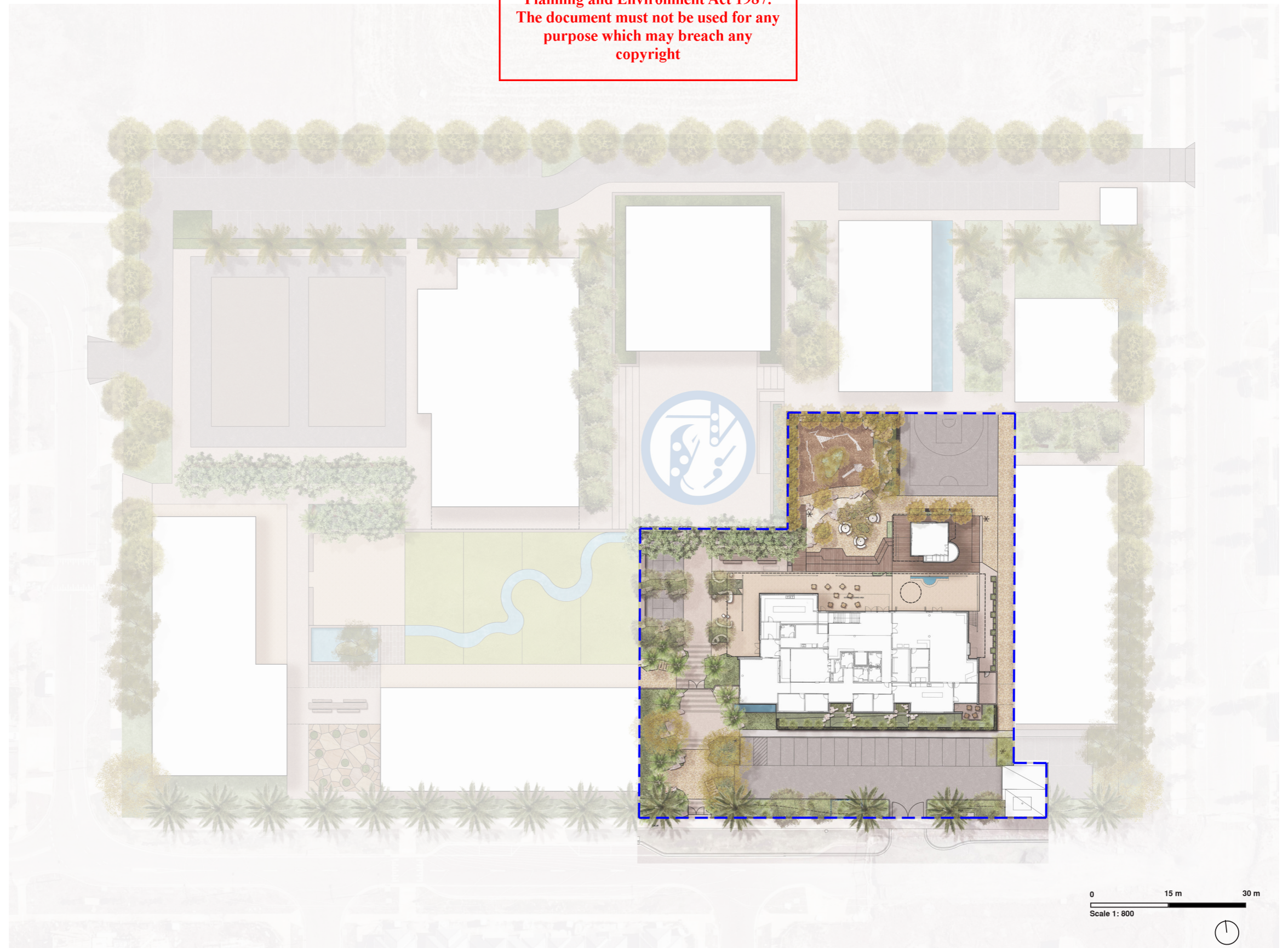
Hardcourts occur throughout the whole school site for formal sports, informal games and other active play. Half Courts, Four square courts, and full-scale courts, all might serve as dual-purpose large gathering and lounge spaces, particularly at lunchtime.

Native plantings to the site perimeter are interrupted by informal lines of palms, at key entry points. This dry perimeter zone will feature the interplay of arid Tree and Palm specimens from various world regions - Australia, West Asian, Mediterranean and Middle Eastern species.

Productive Garden (learning) and permaculture techniques will be located throughout the site, notably in the sunniest spaces, eg terraced the orchard around the nature play, and raised gardens along the eastern edge of the Junior Learning building. Additional key spaces can be found in the Masterplan Legend.

Planting design reinforces the 3 "landscape states" discussed above through the use of mixed exotic and native species, blurring Australian, Middle Eastern and traditional Islamic Garden plants. Productive and medicinal plant species are also important species.

This copied document to be made available for the sole purpose of enabling its consideration and review as part of a planning process under the Planning and Environment Act 1987. The document must not be used for any purpose which may breach any copyright



ADVERTISED PLAN

STAGE 1

LANDSCAPE PLAN & DESIGN INTENT

The detailed selection of materials for this report is limited to Stage 1 but may establish the language for the whole school master plan.

Beyond the perimeter entry gates, there is an informal arrival place, with boulder stone seating nooks framed by raised rock gardens. A reflective linear pond is embedded with the rock garden contrasting the two worlds of aridness and water at this meeting point.

Bands of warm-toned exposed aggregate concrete and asphalt define the central Masjid axis, and invite entry, past the second entry gate towards the administration, public foyer entry.

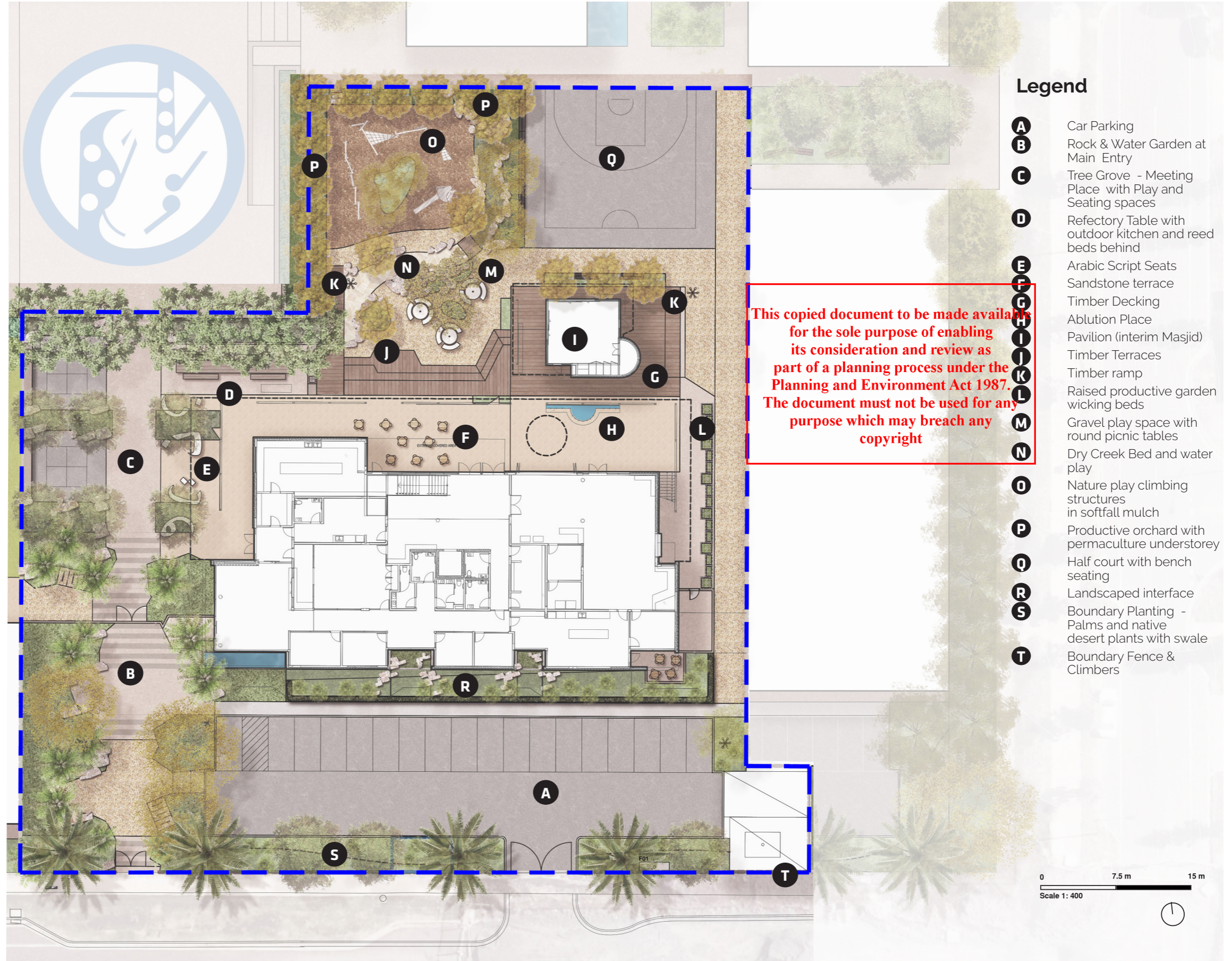
Beyond this secondary entry water gardens and tree groves provide spaces for seating and four square games adjacent to the canteen. Seatings might be constructed of glass-reinforced concrete (GRC) selectively clad with timber tops, rock plinths, and a refectory picnic table for larger gatherings.

The curtilage of the junior learning building will be paved with stone tiles - warm sandstone or hard-wearing quartzite, to evidence local geology. This material has glints of silica hinting it's ancient sand bed origins.

Rough-sawn timber decking links the learning building with the footwash and pavilion space, which in the short term will serve as an interim Masjid. The timber decking terraces down to the nature play zone, a dry creek bed for water play, and a soft mulch zone with nature play climbing structures ringed by a productive orchard.

A halfcourt is the corner anchor, for Stage 1A development. which will serve as a focus for future learning buildings. Raised productive wicking garden beds line the eastern frontage; moveable should a reconsidered edge for outdoor learning to the primary school lie in future works. A landscaped interface provides a green outlook and buffer to the southern carpark. A full list of materials can be found in the Materials Legend.

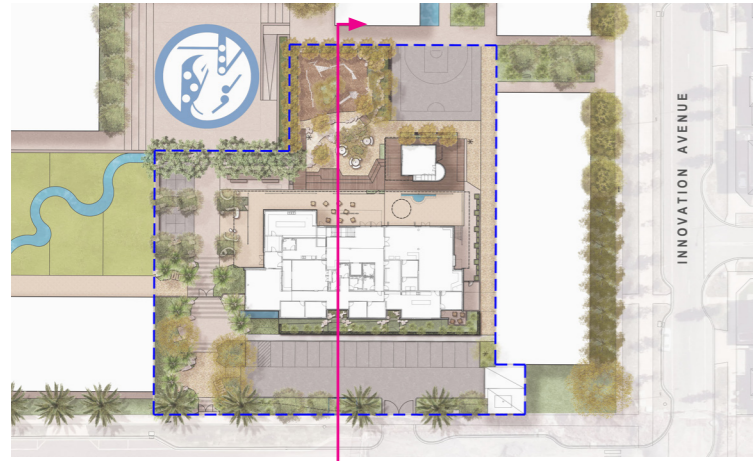
The design intent is to provide a permeable and green landscape surface with garden beds, granitic gravel, decking, and softfall mulch. A lush deciduous overstorey provides mature canopy cover in summer and allows dappled light in winter. Hard courts and surfaces are edged with garden beds for passive irrigation to accept runoff where possible.



Legend	
A	Car Parking
B	Rock & Water Garden at Main Entry
C	Tree Grove - Meeting Place with Play and Seating spaces
D	Refectory Table with outdoor kitchen and reed beds behind
E	Arabic Script Seats
F	Sandstone terrace
G	Timber Decking
H	Ablution Place
I	Pavilion (interim Masjid)
J	Timber Terraces
K	Timber ramp
L	Raised productive garden wicking beds
M	Gravel play space with round picnic tables
N	Dry Creek Bed and water play
O	Nature play climbing structures in softfall mulch
P	Productive orchard with permaculture understorey
Q	Half court with bench seating
R	Landscaped interface
S	Boundary Planting - Palms and native desert plants with swale
T	Boundary Fence & Climbers

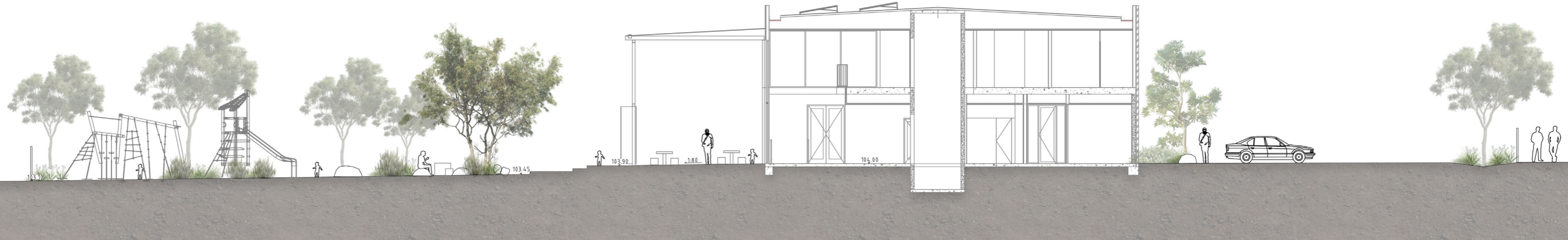
STAGE 1

SECTION



This copied document to be made available for the sole purpose of enabling its consideration and review as part of a planning process under the Planning and Environment Act 1987. The document must not be used for any purpose which may breach any copyright

ADVERTISED PLAN



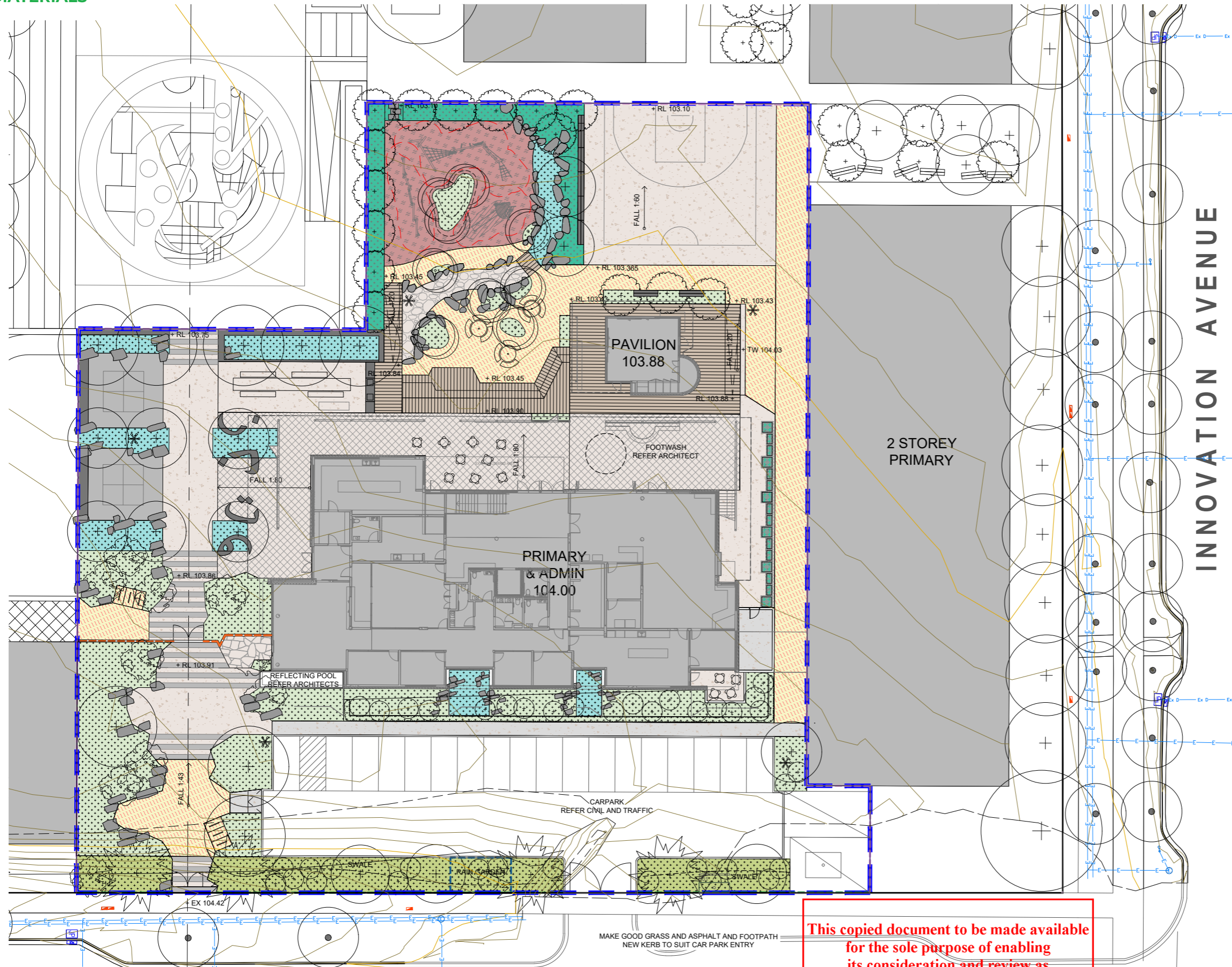
Section A: LONG SECTION

1:200@A3

ADVERTISED PLAN

STAGE 1

MATERIALS



- GREY INSITU CONCRETE PAVING SANDBLASTED FINISH
- COLOUR INSITU CONCRETE PAVING WARM AGGREGATE MIX SANDBLASTED FINISH
- ASPHALT PAVING (VEHICULAR BASE TO CARPARK)
- COLOUR INSITU CONCRETE AND ASPHALT BANDS
- STONE PAVING SET IN GRID ARRANGEMENT HARD WEARING WARM COLOUR
- STONE PAVING TO MATCH ABOVE IN CRAZY PAVE ARRANGEMENT
- TIMBER DECKING UNTREATED ROUGH SAWN IRONBARK
- GRANITIC GRAVEL WARM BROWN COLOUR
- CASTLEMAINE SLATE LARGE FORMAT FLOATERS TO FORM DRY CREEK BED
- SOFTFALL MULCH PINE BARK
- SEATING ROCKS
- CUSTOM SEATS
- REFECTORY PICNIC TABLE
- PROPRIETARY CAFE TABLE AND CHAIRS
- PROPRIETARY ROUND PICNIC TABLE
- PROPRIETARY NATURE PLAY AND CLIMBING STRUCTURE
- CUSTOM TIMBER POST BENCH SEAT
- PROPRIETARY RAISED PRODUCTIVE GARDEN PLANTERS
- PROPRIETARY BARBECUE - FOOD PREP
- TREES
- GARDEN BED GB01 (Dry Perimeter & Carparks / South Boundaries) 5 PLANTS PER M2
- GARDEN BEDS GB02 (Central Courtyard & Play Spaces) 5 PLANTS PER M2
- GARDEN BEDS GB03 (Central Wadi/Productive & Flower Gardens) 5 PLANTS PER M2
- GARDEN BEDS GB04 (Water Gardens) 5 PLANTS PER M2
- FLUSH EDGES MILD STEEL EDGING TO GARDEN BEDS
- FENCE TYPE 01
- FENCE TYPE 02
- FENCE TYPE 03
- LIGHTING MULTIHEADED LIGHT POLES ENSURE NO SPILLOVER OUTSIDE TITLE BOUNDARY

INNOVATION AVENUE

This copied document to be made available for the sole purpose of enabling its consideration and review as part of a planning process under the Planning and Environment Act 1987. The document must not be used for any purpose which may breach any copyright

**PRELIMINARY
 NOT FOR CONSTRUCTION**

STAGE 1

INDICATIVE MATERIAL PALETTE

ADVERTISED PLAN

This copied document to be made available for the sole purpose of enabling its consideration and review as part of a planning process under the Planning and Environment Act 1987. The document must not be used for any purpose which may breach any copyright



Granitic Gravel With Planting Patches and Seatings Dotted Around



Timber Decking Details



Concrete paving with exposed aggregate



Feature Stone Paving



Proposed Nature Play Structure on Softfall Mulch



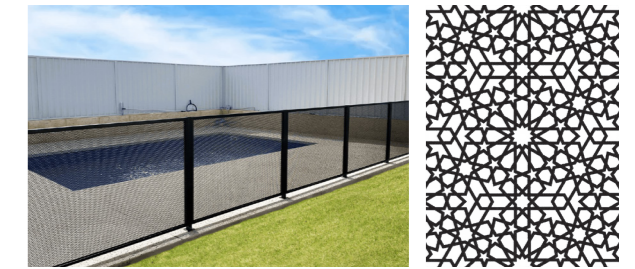
Fence Along Fuschia Drive, 1.8m(H)



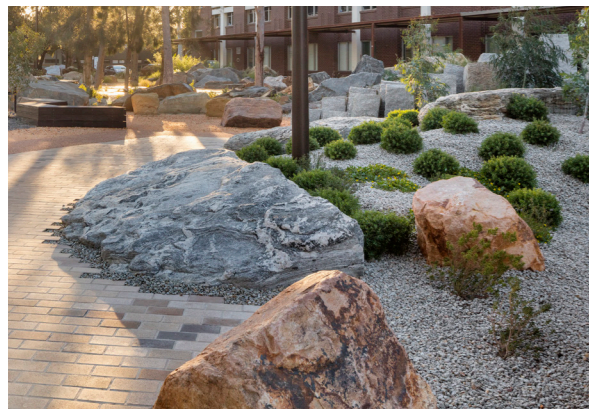
Temporary Black cyclone fence, 1.8m(H)



Dry Perimeter Garden Beds Adjacent to Granitic Gravel



Low Fence with perforated mesh Pattern refers to Architect



Natural Seating Rocks



FoodCubes



Timber Decking Terraces and Refectory Table



Colour Insitu Concrete & Asphalt Bands

STAGE 1

INDICATIVE PLANTING PALETTE - TREES & PALMS

This copied document to be made available for the sole purpose of enabling its consideration and review as part of a planning process under the Planning and Environment Act 1987. The document must not be used for any purpose which may breach any copyright



Geijera parvifolia



Phoenix canariensis



Casuarina cunninghamiana



Melia azedarach



Morus nigra



Citrus limon varieties



Punica granatum varieites

Botanical Name	Common Name	Mature Size (H x W)	Street Frontage	Carparks North and South boundaries and setbacks	Central Courtyard and Play Spaces	Central Wadi/ productive and Flower gardens	Rain Gardens + Water Gardens
TREES AND PALMS							
<i>Acacia implexa</i>	Lightwood	8 x 7m					
<i>Acacia pendula</i>	Weeping Myall	8x 5m					
<i>Allocasuarina littoralis</i>	Black Sheoak (VP)	10 x 4m					
<i>Angophora costata</i>	Smooth barked Apple	25-30m x 12-15m					
<i>Angophora hispida</i>	Dwarf Apple	5-7 x 3-5m					
<i>Agonis flexuosa</i>	Weeping Myrtle	5m x 3m					
<i>Banksia marginata</i>	Silver Banksia	2.5 x 5m					
<i>Boswellia sacra</i>	Olibanum Tree	2 x 8m					
<i>Bursaria spinosa ssp spinosa</i>	Sweet Bursaria	3 x 2m					
<i>Callistemon salignus</i>	Willow Bottlebrush	5-10 x 2-4m					
<i>Cassia fistula</i>	Golden Shower Tree	4 x 10m					
<i>Casuarina cunninghamiana</i>	River Sheoak	12-18m x 6-10m					
<i>Celtis australis</i>	Hackberry	11 x 10m					
<i>Ceratonia siliqua</i>	Carob	8 x 8m					
<i>Cercis siliquastrum</i>	Judas Tree	7 x 6m					
<i>Citrus limon varieties myers</i>	Lime and Lemon	5 x 5m					
<i>Cydonia oblonga varieties</i>	Quince	5 x 3m					
<i>Eucalyptus cladocalyx</i>	Sugar Gum	25-30m x 12-15m					
<i>Eucalyptus cladocalyx 'Nana'</i>	Sugar Gum (local provenance)	8-15m x 5-10m					
<i>Eucalyptus leucoxylon subsp leucoxylon</i>	Yellow Gum	15m x 10m					
<i>Eucalyptus leucoxylon subsp megalocarpa</i>	Large Fruited Yellow Gum	8m x 5m					
<i>Ficus carica varieites</i>	Fig - Black Genoa, Smyrna, Brown Turkey	4 x 4m					
<i>Ficus carica 'Brown Turkey'</i>	Edible Fig	8 x 5m					
<i>Geijera parvifolia</i>	Wilga/ Native Willow	8-12 x 4-7m					
<i>Melia azedarach</i>	White Cedar	10 x 8m					
<i>Morus nigra</i>	Black Mulberry	6-8m x 5m					
<i>Myrtus communis</i>	Common Myrtle	3-4m x 3m					
<i>Olea europaea 'kalamata'</i>	Olive	3 x 5m					
<i>Pittosporum angustifolium</i>	Native Apricot	4-8 x 3-5m					
<i>Pistacia lentiscus</i>	Mastic tree	4 x 6m					
<i>Phoenix canariensis</i>	Canary Island Date Palm	15m x 10m canopy					
<i>Punica granatum</i>	Pomegranate	2 x 5m					
<i>Davidsonia jerseyana</i>	Davidson's plum	8 x 10m					
<i>Phoenix dactilifera</i>	Date Palm	15 m x 10m					
<i>Phoenix reclinata</i>	Senegal Dtae Palm (multi trunk form)	10m x 8m					
<i>Pinus pinea</i>	Stone Pine	12 -18 x 12m					
<i>Punica granatum varieites</i>	Pomegranate	4 x 4m					
<i>Quercus cerris</i>	Turkey Oak	10-15 x 7m					
<i>Quercus ilex</i>	Holly Oak	10-15 x 4-10m					
<i>Quercus wislizeni var frutescens</i>	Interior Live Oak	15-20m x 15m					
<i>Santalum spicatum</i>	Australian Sandalwood	3 x 5m					
<i>Taxodium distichum</i>	Swamp Cypress	5 x 15m					

ADVERTISED PLAN

STAGE 1

INDICATIVE PLANTING PALETTE - SHRUBS & GRASS

This copied document to be made available for the sole purpose of enabling its consideration and review as part of a planning process under the Planning and Environment Act 1987. The document must not be used for any purpose which may breach any copyright

ADVERTISED PLAN



Colocasia sp



Erysimum linifolium "Bowles Mauve"



Dichondra repens



Artemisia schmidtiana 'Silver Mound'



Hakea "Burrendong Beauty"



Anthemis nobilis / Chamaemelum nobile



Hakea decurrens "Pink Lace"



Allocasuarina verticillata dwarf "Noodles"



Cassinia aculeata

Botanical Name	Common Name	Mature Size (H x W)	Street Frontage	Carparks North and South boundaries and setbacks	Central Courtyard and Play Spaces	Central Wadi/ productive and Flower gardens	Rain Gardens + Water Gardens
SHRUBS AND GRASSES							
<i>Acacia acinacea</i>	Gold Dust Wattle	2m x 2m					
<i>Acacia covneyi</i>	Bush Bush Wattle	2m x 2m					
<i>Acacia paradoxa</i>	Kangaroo Acacia	2-4m x 2-5m					
<i>Aegopodium podagraria</i>	Bishop's Weed	0.3m x 1m					
<i>Allocasuarina verticillata dwarf "Noodles"</i>	Dwarf Sheoake "Noodles"						
<i>Anthemis nobilis / Chamaemelum nobile</i>	Chamomile	0.2 x 0.5m					
<i>Artemisia schmidtiana 'Silver Mound'</i>	Silver Mound wormwood	0.25x 0.5m					
<i>Austrostipa elegantissima</i>	Tall Feather-grass	1-2m x 1m					
<i>Prostanthera incisa</i>	Native Thyme	1 x 2m					
<i>Banksia spinulosa</i>	Hairpin Banksia	0.4m x 1m					
<i>Colocasia sp</i>	Taro						
<i>Capparis "Eureka"</i>	Caper Bush H	1 x 2m					
<i>Capparis spinosa</i>	Caper Bush	1 x 1m					
<i>Carex appressa</i>	Tall Sedge	0.8m x 0.7m					
<i>Camellias Japonica</i>	Japanese camellia	3m x 2m					
<i>Cassinia aculeata</i>	Common Cassinia	3 x 3m					
<i>Chrysocephalum apiculatum</i>	Common Everlasting	0.2m x 1.5m					
<i>Correa glabra var. Coliban River</i>	Rock Correa	1-2m x 1-2m					
<i>Correa glabra var. glabra</i>	Rock Correa	1-3m x 1-3m					
<i>Cyperus lucidus</i>	Cutting Grass	0.6-1.5m x 0.5m					
<i>Dianella brevicaulis</i>	Small-flowered Flax-lily	.5m x .5m					
<i>Dichondra repens</i>	Kidney Weed	0.1m x 2m					
<i>Einadia nutans</i>	Nodding Saltbush	0.1m x 1m					
<i>Erysium cheiri "Apricot Twist"</i>	Orange wallflower	0.5x 0.5m					
<i>Erysium linifolium "Bowles Mauve"</i>	Purple wallflower	0.75 x 0.5m					
<i>Goodenia ovata 'Gold Cover'</i>	Golden Goodenia	0.2m x 0.8m					
<i>Grevillea rosmarinifolia</i>	Rosemary Grevillea	0.5 - 2m x 1.5m					
<i>Grevillea rosmarinifolia 'Scarlet Sprite'</i>	Scarlet Sprite Grevillea cultivar	1.2 x 1m					
<i>Grevillea rosmarinifolia 'Crimson Villea'</i>	Crimson Villea Grevillea cultivar	0.8 x 0.8m					
<i>Hakea "Burrendong Beauty"</i>	Burrendong Beauty Hakea	1 x 2m					
<i>Hakea decurrens 'Pink Lace'</i>	Pink Hakea	1.5 x 1.0m					
<i>Hibiscus rosa-sinensis</i>	Hibiscus	2-4 x 1-2m					
<i>Iris histroides "George" and Iris :harmony"</i>	Winter flowering Iris	0.2 x 0.2m					
<i>Isolepis cernua</i>	Grassy Club-sedge	0.2m x 0.5m					
<i>Juncus flavidus</i>	Yellow Rush	0.3 - 1.2m x 0.2-1m					
<i>Kennedia prostrata</i>	Running Postman	Climber/Ground cover					
<i>Laurus nobilis</i>	Bay Laurel	hedged					
<i>Lavandula angustifolia "Hidcote"</i>	Hidcote lavender	0.3 x 4m					
<i>Lavatera cashmeriana</i>	Kashmir mallow	1.5 x 1.0m					
<i>Lavatera maritima</i>	Musk mallow	1.5x 1.0m					
<i>Lilium sp</i>	Lillies						
<i>Nepeta 'Dropmore'</i>	Dropmore Catmint	0.4 x 0.7m					
<i>Rosmarinus officinalis</i>	Rosemary	hedged					
<i>Rosmarinus officinalis Prostratus</i>	Creeping Rosemary	prostrate					
<i>Senna artemisioides subsp. artemisioides</i>	Silver cassia	1- 3m x 1m					
<i>Thymus x citriodorus</i>	Lemon thyme	0.2 x 0.4m					
<i>Xanthorrhoea x hybrida "Supergrass"</i>	Grass Tree	1 x 1.2 m					

This copied document to be made available
for the sole purpose of enabling
its consideration and review as
part of a planning process under the
Planning and Environment Act 1987.
The document must not be used for any
purpose which may breach any
copyright

ADVERTISED PLAN

rush\wright associates

Lvl 5, 105 Queen Street
Melbourne Vic Australia 3000
email inbox@rushwright.com
Instagram [rush.wright.associates](https://www.instagram.com/rush.wright.associates)
www.rushwright.com

Landscape Architecture | Urban Design | Constructed Ecology