

13 May 2021

The Planning Professionals

Via email: tchakir@theplanningprofessionals.com.au

Attention: Tufan Chakir

127-133 Torquay Road, Grovedale

Traffic & Pedestrian Management Plan

This copied document to be made available for the sole purpose of enabling its consideration and review as part of a planning process under the Planning and Environment Act 1987. The document must not be used for any purpose which may breach any copyright

Dear Tufan,

onemilegrid has been previously requested by The Planning Professionals to assist with a response to a Request for Further Information provided by Department of Transport (DoT) in response to a change of use application at the abovementioned property.

The application (Council Ref: PP-121-2020, DoT Ref: PPR 34617/20), which sought to amend the permitted use of the site from Place of Assembly to an Education Centre was ultimately approved in February 2021.

A number of permit conditions were imposed relating to traffic and parking matters, including the below:

15. *Prior to the commencement of use, the following must be carried out to the satisfaction of and at no cost to the Head, Transport for Victoria and Responsible Authority:*

b) A traffic and pedestrian management plan must be submitted to and approved by the Responsible Authority, detailing the following:

i. Provision of school staff before, during and after school periods to:

- 1. Prevent the hindrance of traffic flow and non-compliance with traffic rules.*
- 2. Prevent parking in undesignated areas.*
- 3. Ensure that all children and parents utilise formal, controlled crossing facilities to the south of the site when crossing Torquay Road.*

ii. Allocation of staff and parent parking on-site to ensure that parking for each user group remains consistent in its location and availability to assist with wayfinding.

iii. Specifying the location of all pick-up/drop-off activity and identifying (as appropriate specific spaces for accommodating pick-up/drop-off activity, pick-up/drop-off (including private school buses) will be prohibited from occurring on Torquay Road

iv. Methodology for communication of traffic and pedestrian management policy to parents (e.g newsletter, pamphlets, enrolment information pack).

v. Providing information to parents and students on alternative means to access the site such as bike routes and public transport.

The following report has been prepared to address the above permit condition.

TRAFFIC & PEDESTRIAN MANAGEMENT

Introduction

This Traffic & Pedestrian Management Plan (TPMP) has been based on the proposed site plan (Dated 10/05/21) prepared by The Planning Professionals and applies to all car parking and pedestrian areas located on the development at 127-131 Torquay Road, Grovedale.

This TPMP has been prepared to address a condition of Planning Permit PP-121-2020 and aims to mitigate risks associated with pedestrians and vehicles within and around the site.

A layout plan of the site is provided as an annex to this letter.

Traffic & Pedestrian Management

The operator (Edmund Rice Education Australia) has committed to employing the following measures.

Car Parking Allocations

- Staff car parking will be allocated towards the rear of the site, and pick-up/drop-off parking provided towards the front of the site to ensure that parking for each user group remains consistent in its location and availability, to assist with wayfinding, and to minimise vehicle movements through the site
- Parking allocations will be signed or line marked as appropriate, and are detailed on the architectural plans

Pick-up & Drop-off

- Pick-up/drop-off activity will occur on-site within dedicated spaces, or along Grove Road only
- Bus loading and unloading will occur from within the access aisle at the building entrance under staff supervision
- No other pick-up/drop-off activity is to occur from within the parking aisles
- Pick-up/drop-off activity (including school buses) will be prohibited from occurring on Torquay Road

Supervision

- The school will appoint a staff member to patrol the car park and surrounds during before and after school periods to:
 - ✦ Prevent of hindrance to traffic flow and non-compliance with traffic rules
 - ✦ Prevent parking in undesignated areas (including within staff spaces, or along Torquay Road)
 - ✦ Ensure that all children and parents utilise formal, controlled crossing facilities to the south of the site when crossing Torquay Road

Pedestrians

- Car parking areas and access aisles will operate as a shared environment, with relatively low traffic volumes, and a low-speed environment considered suitable for shared use

- Pedestrians will be encouraged to utilise formal, dedicated pedestrian facilities in the sites vicinity, and to utilise formal crossings when traversing Torquay Road

Communication

- The operator will provide information to parents and guardians upon enrolment, and at the commencement of each school year on the traffic and pedestrian management measures to be employed on-site
- Supplementary information, or changes to traffic and parking management, will be communicated on the school website, and through the school bulletins or newsletters
- Details of how to access the site by sustainable transport modes will be provided on the school website, and in strategic locations (e.g. entrance foyer, admin office) throughout the site. This may include identification of nearby public transport services and stop locations, bicycle routes, and pedestrian connections and crossings

Monitoring & Review

- The implementation of this Traffic & Pedestrian Management Plan is the responsibility of the operator, and should be a dynamic document, reflecting changes in on-site conditions e.g. change in staffing. As such, the plan should be periodically revisited and amended so as to provide the most accurate and relevant information to achieve the desired objectives of reducing pedestrian/vehicle conflicts.

Please do not hesitate to contact me should you wish to discuss the above.

Yours sincerely



James Dear

Associate

onemilegrid

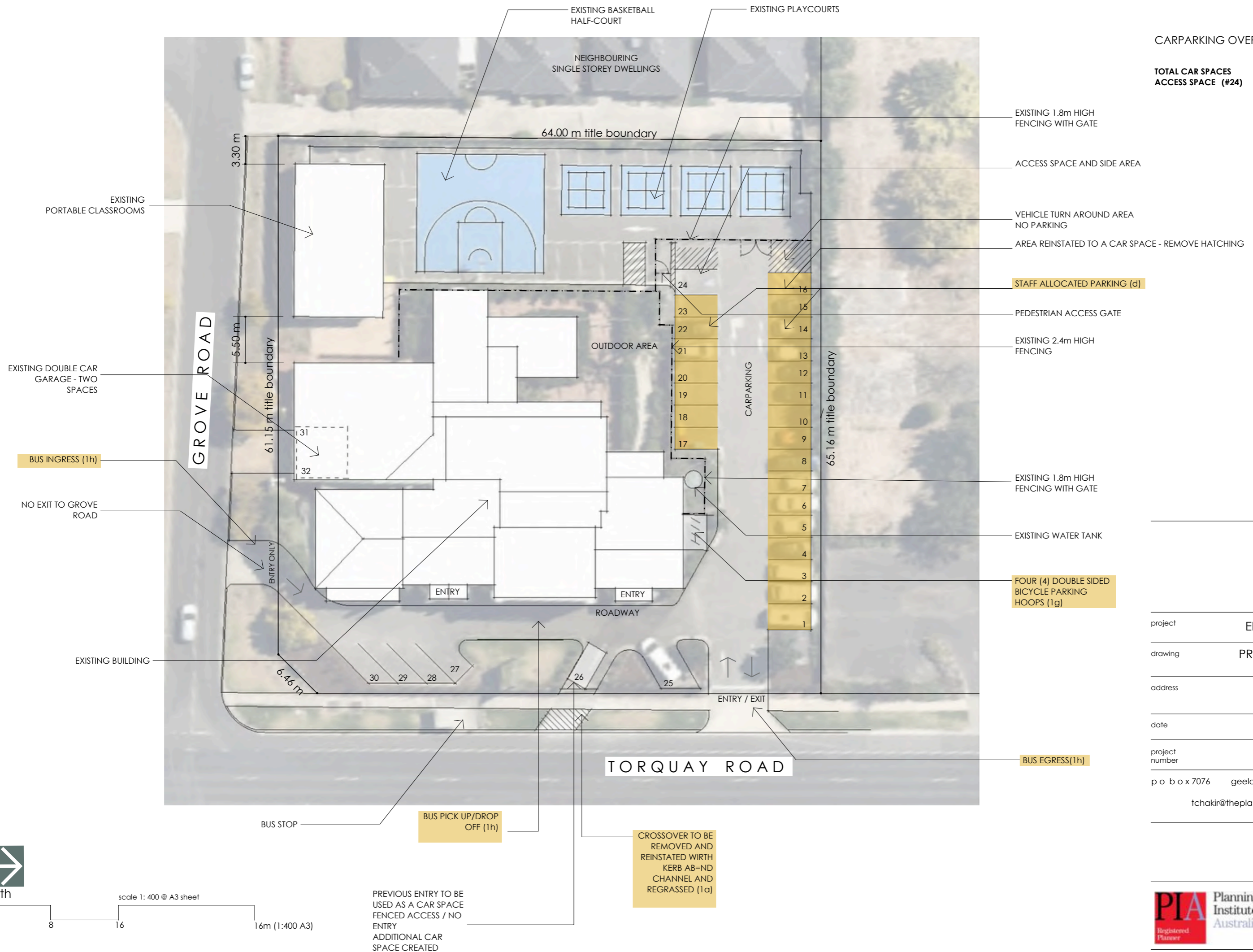
m: 0481 110 642

d: (03) 9982 9717

e: james.dear@onemilegrid.com.au

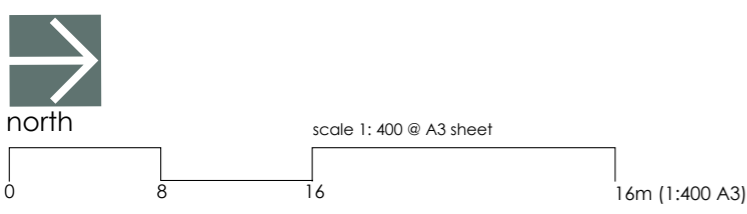
CARPARKING OVERVIEW

TOTAL CAR SPACES 32
ACCESS SPACE (#24) 1



- EXISTING 1.8m HIGH FENCING WITH GATE
- ACCESS SPACE AND SIDE AREA
- VEHICLE TURN AROUND AREA NO PARKING
- AREA REINSTATED TO A CAR SPACE - REMOVE HATCHING
- STAFF ALLOCATED PARKING (d)
- PEDESTRIAN ACCESS GATE
- EXISTING 2.4m HIGH FENCING
- EXISTING 1.8m HIGH FENCING WITH GATE
- EXISTING WATER TANK
- FOUR (4) DOUBLE SIDED BICYCLE PARKING HOOPS (1g)
- BUS EGRESS(1h)

project	EDUCATION CENTRE
drawing	PROPOSED SITE PLAN with aerial
address	127 - 131 TORQUAY ROAD GROVEDALE
date	April 2021
project number	21019
p o box 7076 geelong west vic 3218 m 0422202516 tchakir@theplanningprofessionals.com.au abn 89 007 435 565	



PREVIOUS ENTRY TO BE USED AS A CAR SPACE FENCED ACCESS / NO ENTRY
ADDITIONAL CAR SPACE CREATED

CROSSOVER TO BE REMOVED AND REINSTATED WITH KERB AB=ND CHANNEL AND REGRASSED (1a)