

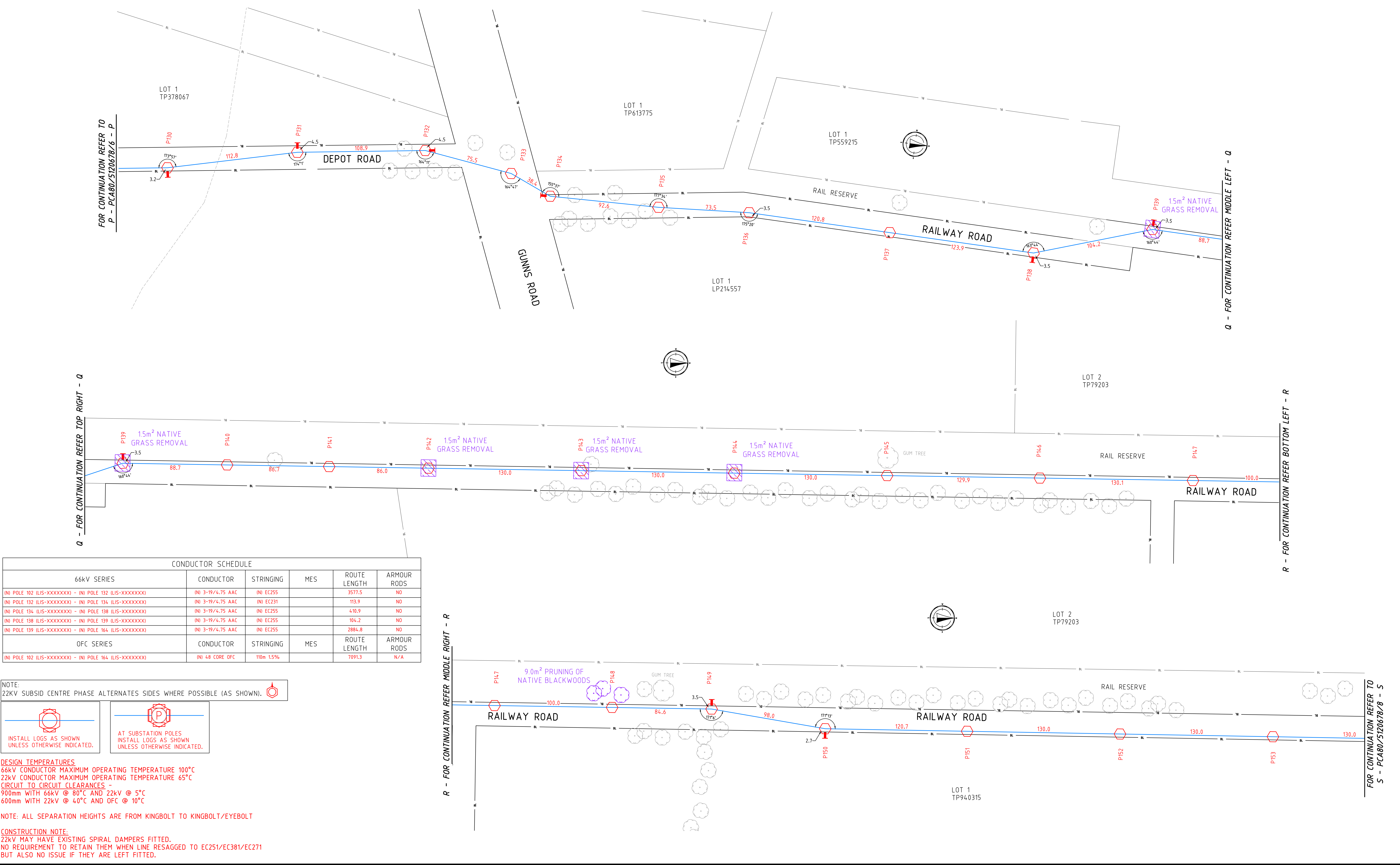
FOR CONTINUATION REFER TO  
P - PCA80/5120678/6 - P

Q - FOR CONTINUATION REFER MIDDLE LEFT - Q

Q - FOR CONTINUATION REFER TOP RIGHT - Q

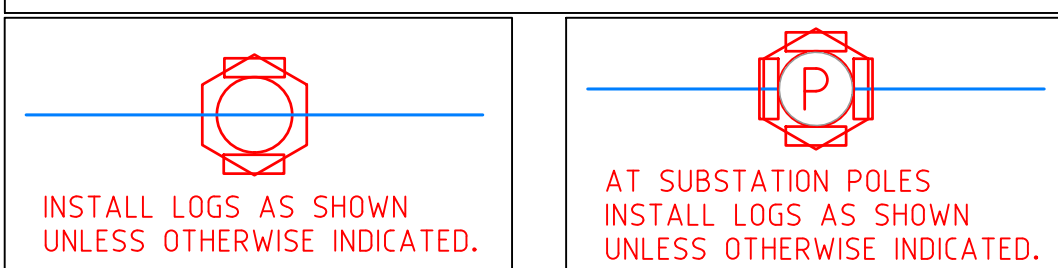
R - FOR CONTINUATION REFER BOTTOM LEFT - R

FOR CONTINUATION REFER TO  
S - PCA80/5120678/8 - S



CONDUCTOR SCHEDULE					
66kV SERIES	CONDUCTOR	STRINGING	MES	ROUTE LENGTH	ARMOUR RODS
(NI POLE 102 (LIS-XXXXXXX) - NI POLE 132 (LIS-XXXXXXX))	(NI 3-19/4.75 AAC	(NI EC255		3577.5	NO
(NI POLE 132 (LIS-XXXXXXX) - NI POLE 134 (LIS-XXXXXXX))	(NI 3-19/4.75 AAC	(NI EC231		113.9	NO
(NI POLE 134 (LIS-XXXXXXX) - NI POLE 138 (LIS-XXXXXXX))	(NI 3-19/4.75 AAC	(NI EC255		410.9	NO
(NI POLE 138 (LIS-XXXXXXX) - NI POLE 139 (LIS-XXXXXXX))	(NI 3-19/4.75 AAC	(NI EC255		104.2	NO
(NI POLE 139 (LIS-XXXXXXX) - NI POLE 164 (LIS-XXXXXXX))	(NI 3-19/4.75 AAC	(NI EC255		2884.8	NO
OFC SERIES	CONDUCTOR	STRINGING	MES	ROUTE LENGTH	ARMOUR RODS
(NI POLE 102 (LIS-XXXXXXX) - NI POLE 164 (LIS-XXXXXXX))	(NI 48 CORE OFC	110m 1.5%		7091.3	N/A

NOTE:  
22KV SUBSID CENTRE PHASE ALTERNATES SIDES WHERE POSSIBLE (AS SHOWN).

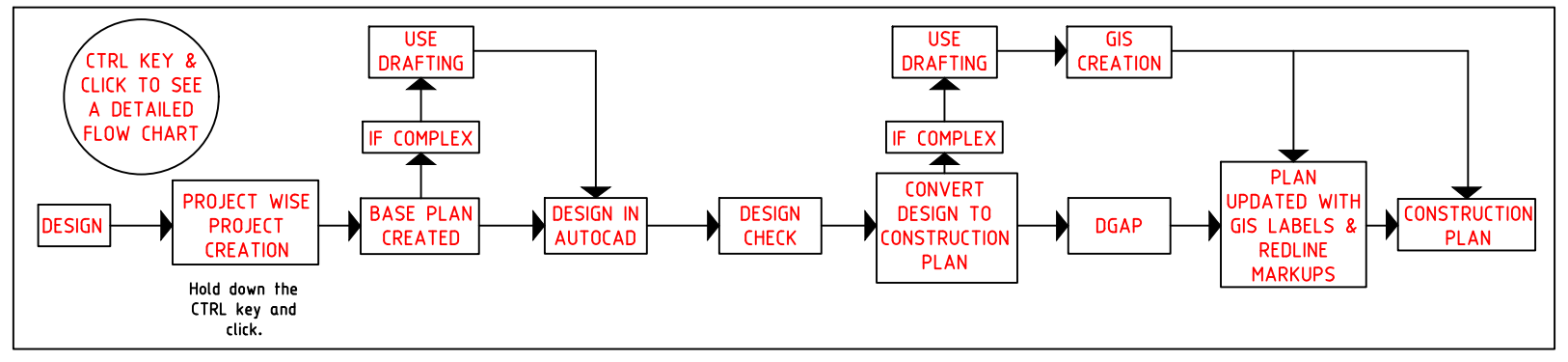


DESIGN TEMPERATURES  
66kV CONDUCTOR MAXIMUM OPERATING TEMPERATURE 100°C  
22kV CONDUCTOR MAXIMUM OPERATING TEMPERATURE 65°C  
CIRCUIT TO CIRCUIT CLEARANCES  
900mm WITH 66kV @ 80°C AND 22kV @ 5°C  
600mm WITH 22kV @ 40°C AND OFC @ 10°C

NOTE: ALL SEPARATION HEIGHTS ARE FROM KINGBOLT TO KINGBOLT/EYEBOLT

CONSTRUCTION NOTE:  
22kV MAY HAVE EXISTING SPIRAL DAMPERS FITTED.  
NO REQUIREMENT TO RETAIN THEM WHEN LINE RESAGGED TO EC251/EC381/EC271  
BUT ALSO NO ISSUE IF THEY ARE LEFT FITTED.

**PLAN NOT TO BE CONVERTED TO A CONSTRUCTION PLAN UNTIL DESIGN HAS BEEN CHECKED**



**PLAN NOT TO BE ISSUED TO CONSTRUCTION UNTIL DGAP HAS BEEN COMPLETED**

**ENERGY DESIGN**  
**PLAN FOR DESIGN PURPOSES ONLY**  
**NOT FOR CONSTRUCTION**

PROJECT NUMBER	5120678
ROAD DIRECTORY	VICROADS 89 H6
GIS MAP REF.	MAP 235 - H1
MAP PROJECTION	MGA ZONE 54
FEEDER / SWITCHING ZONE	66kV (KRT-WTW) 22kV (KRT031)
REFERENCE DRAWING	N/A
REFERENCE DRAWING	N/A
PROJECT MANAGER	BARRY THEBES

SCALE: 1:1250  
LENGTHS ARE IN METRES



REVISION			
DRAWING NUMBER	PCA80 5120678	7	SHEET 7 OF 9
OH CONSTRUCTION PLAN PROPOSED 66kV LINE KRT-WTW			
KOROIT - WOOLSTHORPE			
DRAWN	DRAFTING CHECK	DESIGNER	DESIGN APPROVAL
S.HUMM		S.HUMM	B.THEBES