



Imaged Document Cover Sheet

The document following this cover sheet is an imaged document supplied by LANDATA®, Secure Electronic Registries Victoria.

Document Type	Plan
Document Identification	LP059001
Number of Pages (excluding this cover sheet)	2
Document Assembled	18/12/2023 14:00

Copyright and disclaimer notice:

© State of Victoria. This publication is copyright. No part may be reproduced by any process except in accordance with the provisions of the Copyright Act 1968 (Cth) and for the purposes of Section 32 of the Sale of Land Act 1962 or pursuant to a written agreement. The information is only valid at the time and in the form obtained from the LANDATA® System. None of the State of Victoria, LANDATA®, Secure Electronic Registries Victoria Pty Ltd (ABN 86 627 986 396) as trustee for the Secure Electronic Registries Victoria Trust (ABN 83 206 746 897) accept responsibility for any subsequent release, publication or reproduction of the information.

The document is invalid if this cover sheet is removed or altered.

LP 59001

EDITION 2

PLAN MAY BE LODGED 17-3-1965

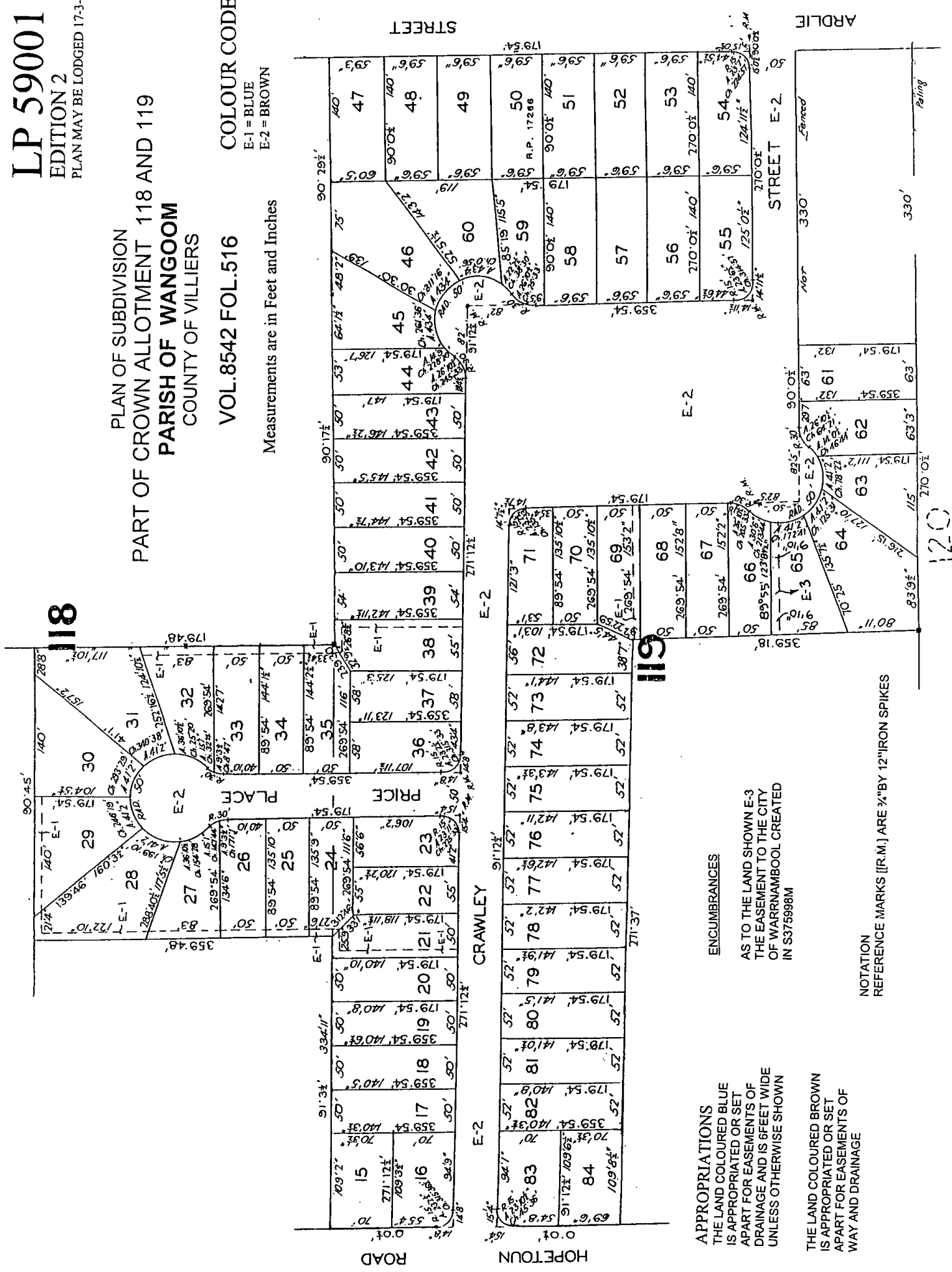
PLAN OF SUBDIVISION PART OF CROWN ALLOTMENT 118 AND 119 PARISH OF WANGOOM COUNTY OF VILLIERS

VOL.8542 FOL.516

COLOUR CODE

E-1 = BLUE
E-2 = BROWN

Measurements are in Feet and Inches



APPROPRIATIONS
THE LAND COLOURED BLUE IS APPROPRIATED OR SET APART FOR EASEMENTS OF DRAINAGE AND IS 6 FEET WIDE UNLESS OTHERWISE SHOWN

THE LAND COLOURED BROWN IS APPROPRIATED OR SET APART FOR EASEMENTS OF WAY AND DRAINAGE

ENCUMBRANCES

AS TO THE LAND SHOWN E-3 THE EASEMENT TO THE CITY OF WARRENAMBOOL CREATED IN S375998M

NOTATION
REFERENCE MARKS [(R.M.) ARE 3/4" BY 12" IRON SPIKES

120

