

lid Low Impact Development Consulting



Green Travel Plan

Sustainable transport options for:

85 Sharps Road, Tullamarine

Prepared for: EMKC³

Prepared by: Low Impact Development

19/12/2024

e: info@lidconsulting.com.au

p: 03 9016 9486

a: Level 6, 114 Flinders St, Melbourne 3000

w: www.lidconsulting.com.au

Version	Date	Description	Drawings	Prepared	Checked
1.0	27/08/2024	TP Issue	Rev. C (26/08/2024)	JN	CH
1.1	19/12/2024	Pre-app ESD comments	Rev. G (18/12/2024)	JN	CH

Disclaimer

This report is copyright and has been written exclusively for the subject project discussed throughout. No part of this document may be reproduced or transcribed without the express agreement of LID Consulting Pty Ltd. The content of this report remains the intellectual property of LID Consulting.

The content of this document represents the entirety of work output or recommendations offered by LID Consulting for this particular project. This content supersedes all other verbal discussions undertaken by LID Consulting representatives in relation to this project.

Contents

1	Introduction	1
1.1	Green Travel Plan.....	1
2	Project background.....	2
2.1	Nearby facilities.....	2
2.2	Subject site.....	3
3	Transport Options	4
3.1	Walkability.....	4
3.2	Bicycle paths	4
3.3	Bicycle parking.....	4
3.4	Bicycle parking and lockers at train stations	4
3.5	Public transport	5
3.6	Motorcycle and moped parking.....	5
3.7	Taxis and ride sharing	5
4	Implementation.....	6
5	Monitoring and reporting.....	6
	Appendix 1 - Local Area Map.....	7

1 Introduction

The following Green Travel Plan (GTP) has been prepared for the development at 85 Sharps Road, Tullamarine. This report is intended to demonstrate compliance with State and Local sustainable planning objectives, in conjunction with the Sustainability Management Plan.

The proposal consists of development of a data centre and associated infrastructure at 85 Sharps Road, Tullamarine. The overall aim of this Green Travel Plan is to promote the use of non-private vehicle and alternative transport modes by the site's occupants.

1.1 Green Travel Plan

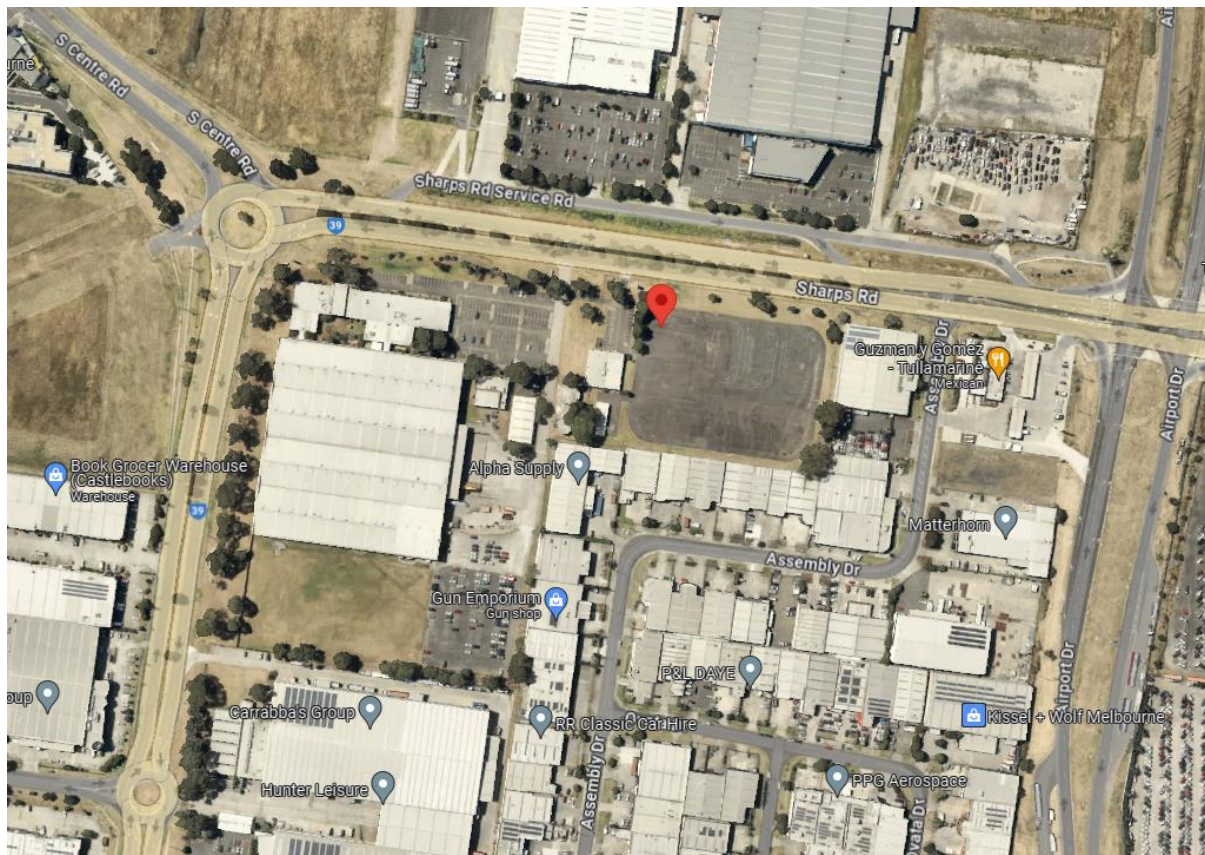
This Green Travel Plan aims to promote the use of public and active (e.g. walking and bicycling) transport options and facilitate amenities to encourage this behaviour (e.g. easily accessed bicycle rails and information packs).

It is expected that employees will primarily reach the site by private vehicle, however facilities are provided to encourage use of bicycles and motorcycles as lower carbon options for transport.

The goals of the Green Travel Plan:

- To simplify and encourage the use of public transport, walking, cycling and carpooling
- To increase the share of short trips taken by these transport modes
- To reduce reliance on single-occupant motor vehicles
- To minimise negative environmental costs of transport
- Improve conditions for employees without vehicles or driver licenses

2 Project background



The proposal consists of construction of a data centre at 85 Sharps Road, Tullamarine. The site is located on the south-east corner of the Sharps Road & Keilor Park Drive intersection, interfacing both Sharps Road and Keilor Park Drive.

There is currently limited connectivity to public transport and active transport infrastructure. The surrounds are predominantly made up of warehouses and other industrial uses.

2.1 Nearby facilities

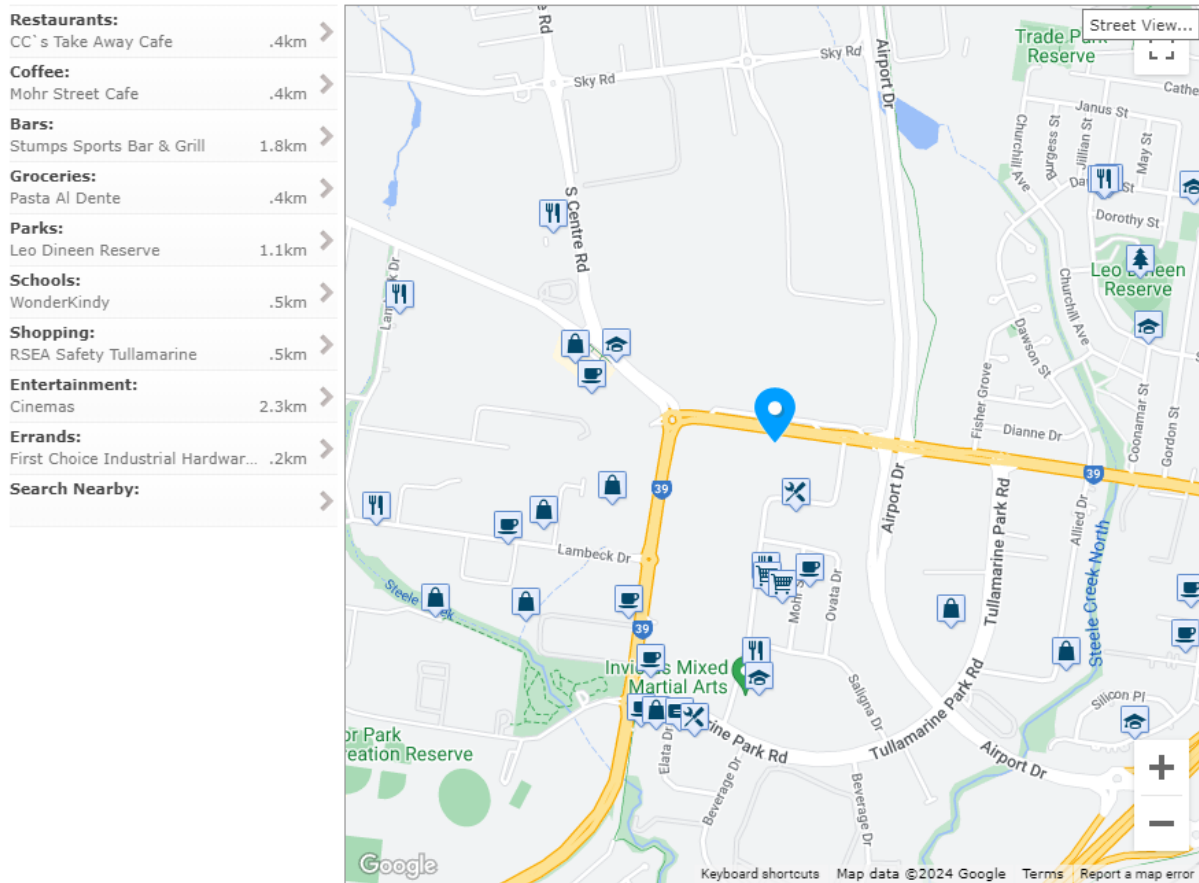
The location of the proposed development in Tullamarine exhibits limited connection to public and alternative transport services. It is expected the majority of trips to nearby facilities from the site will require personal vehicle transport.

Nearby services of note are detailed as follows:

Amenities and destinations	Distance	Transport mode
Major shops, supermarket, restaurants and cafes (Westfield Airport West)	2100 m	
Bus stop (Lambeck Dr)	500 m	Bicycle, motorcycle or car
Train station (Glenroy Station)	4700 m	
Education (daycare)	500m	

2.2 Subject site

The below is a snapshot of the site and surrounding amenities.



Source: Walkscore <https://www.walkscore.com/>

3 Transport Options

3.1 Walkability

The residential development is rated as 'Car-Dependent' with a score of 39 out of 100 using the 'Walk Score' web tool www.walkscore.com. This rank is based on the availability of a variety of food, amenity and recreation options within walking and cycling distance of the site (10-15 minute walk).

3.2 Bicycle paths

The proposed development is located adjacent to the Airport Drive trail, which connects to the Tullamarine Airport and surrounding locality of Tullamarine via a number of arterial roads.

The location of dedicated bicycle trails and bicycle friendly roads can be accessed by searching google maps for the address and turning on the "Bicycle" layer.

A Travel Smart map showing major local travel interchanges, locations of lockers, bicycle cages and paths as well as other public transport options can be obtained by searching for the Councils Travel Smart map. The Travel Smart map for the City of Brimbank can be accessed from:

<https://www.brimbank.vic.gov.au/explore-brimbank/parks-and-nature/walking-paths-and-bike-trails>

3.3 Bicycle parking

Planning scheme clause 52.34 prescribes the requirements for bicycle parking, showers and change rooms. As 'Data Centre' is an unlisted use there are no prescriptive rates for bicycle parking or end of trip facilities.

The proposed development will incorporate 8no. bicycle spaces adjacent to the main building entry. In addition, the development incorporates end of trip facilities including showers and lockers for employees.

This inclusion will facilitate and encourage active transport as an alternative to personal vehicles.

3.4 Bicycle parking and lockers at train stations

Bike lockers are available at select train stations across Victoria.

Bike lockers at Premium stations can be rented free after paying a bond of \$100 for a new locker with a built-in lock or \$50 for lockers that require you to supply a lock. Lockers can be rented for up to three months at a time and renewed without paying any additional bond. They can be used for storing bikes, helmets, clothes and shoes.

A Travel Smart map showing major local travel interchanges, locations of lockers and bicycle cages etc can be obtained for the councils listed on the site <http://www.transport.vic.gov.au/projects/travelsmart/maps>

3.5 Public transport

The development is serviced by the following public transport options:

PT mode	Station and route	Destinations	Distance to station/stop
Train	Glenroy Station	Craigieburn – CBD	4.7 km
Bus	Lambeck Dr/ Commercial Ct Route 482	Airport West SC – Tullamarine Airport via South Centre Rd	0.5 km
	Sharps Rd/ Broadmeadows Rd Route 477	Broadmeadows Station – Moonee Ponds via Essendon	1.3 km
	Carol Gr/ Melrose Dr Routes 478, 479, 902, 959	Airport West SC – Tullamarine Airport via Melrose St (478) / Sunbury Station (479)	
		Chelsea Station – Airport West SC (902)	1.8 km
		City – Broadmeadows Station via Niddrie and Airport West (959)	

Refer to the following resources for further information on public transport:

- Refer to the appendices for the City of Brimbank public transport options local area map available from <http://ptv.vic.gov.au/getting-around/local-areas>
- Tram, bus and train timetables can be accessed from <http://ptv.vic.gov.au/timetables/>
- A full range of Public Transport Victoria maps can be sourced from <http://ptv.vic.gov.au/getting-around/maps/>
- For more train specific information visit www.metrotrains.com.au
- A Travel Smart map showing major local travel interchanges etc can be obtained for the councils listed on the site <http://www.transport.vic.gov.au/projects/travelsmart/maps>
- Information regarding public transport fares through the Myki system are available from <https://www.ptv.vic.gov.au/tickets/myki/>

3.6 Motorcycle and moped parking

Motorcycle parking provisions have been included in the proposed development. A total 5no. motorcycle parking spaces are provided for employees.

This inclusion supports lower carbon emissions transport options.

3.7 Taxis and ride sharing

Taxis can be booked online, over the phone or hired from the street or taxi rank.

Alternatively, rideshare service apps such as Uber, Didi, Ola, GoCatch, Shebah and Oscar can be downloaded onto any smartphone and used to instantly book trips.

4 Implementation

Green Travel measures from this plan will be incorporated into site induction material to ensure new employees have access to relevant sustainable transport information.

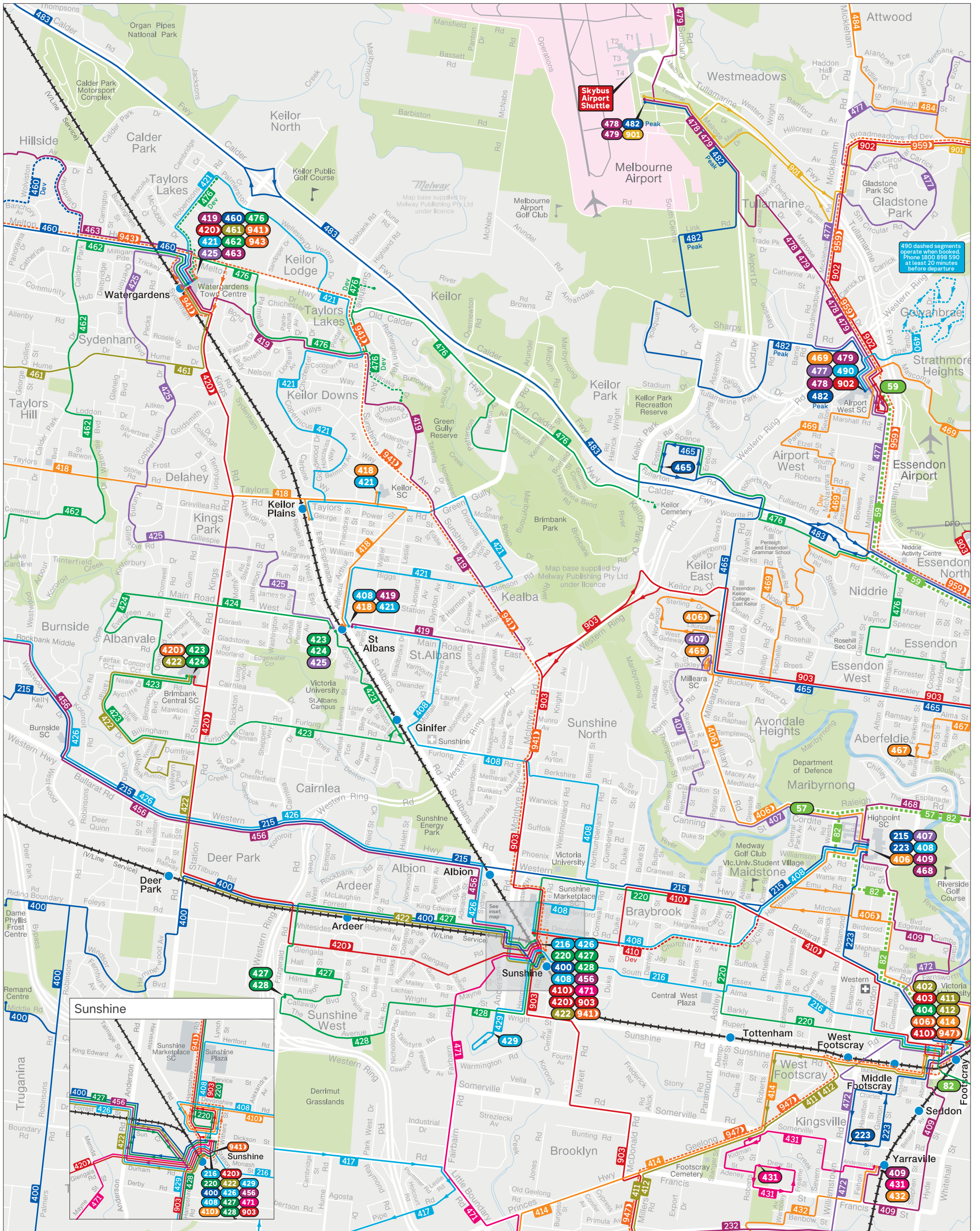
5 Monitoring and reporting

The Green Travel Plan should be reviewed annually, to ensure suitable actions are taken to further promote sustainable transport options.



Appendix 1 - Local Area Map

Brimbank bus network



— Train
 — Tram
 — Bus
 64 Tram terminus
 600 Bus terminus
 600 Night Bus terminus

MAP NOT TO SCALE
Effective May 2024



For more public transport information visit ptv.vic.gov.au, use the PTV app or call 1800 800 007.

