

ADVERTISED
PLAN

Traffix Group

Waste Management Plan

Secondary School Development

Baranduda Catholic Secondary School,
Baranduda – Masterplan

Prepared for
Catholic Education Sandhurst Limited (CESL)

April 2026

G37148R-02C (WMP)

This copied document to be made available for the sole purpose of enabling its consideration and review as part of a planning process under the Planning and Environment Act 1987. The document must not be used for any purpose which may breach any copyright

Waste Management Plan

Document Control

Our Reference: G37148R-02C (WMP)

Issue No.	Type	Date	Prepared By	Approved By
A	Draft	10/02/2026	M. Jora	B. Chisholm (RPE7582)
B	Final	13/02/2026	M. Jora	B. Chisholm (RPE7582)
C	Masterplan	1/04/2026	M. Jora	B. Chisholm (RPE7582)

AS/NZS ISO 45001-2018 Occupational Health & Safety Management Systems
AS/NZS ISO 14001 Environmental Management Systems
AS/NZS ISO 9001-2016 Quality Management Systems



COPYRIGHT: The ideas and material contained in this document are the property of Traffix Group (Traffix Group Pty Ltd – ABN 32 100 481 570). Use or copying of this document in whole or in part without the written permission of Traffix Group constitutes an infringement of copyright.

LIMITATION: This report has been prepared on behalf of and for the exclusive use of Traffix Group's client and is subject to and issued in connection with the provisions of the agreement between Traffix Group and its client. Traffix Group accepts no liability or responsibility whatsoever for or in respect of any use of or reliance upon this report by any third party.

This copied document to be made available for the sole purpose of enabling its consideration and review as part of a planning process under the Planning and Environment Act 1987. The document must not be used for any purpose which may breach any copyright

Table of Contents

1.	Introduction.....	1
2.	Proposal.....	1
3.	Waste Management Plan.....	2
3.1.	<i>Waste Systems.....</i>	<i>2</i>
3.2.	<i>Management of Waste Streams.....</i>	<i>2</i>
3.3.	<i>Waste Generation.....</i>	<i>3</i>
3.3.1.	<i>Overall Generation Rates.....</i>	<i>3</i>
3.4.	<i>Waste Equipment (MGBs).....</i>	<i>4</i>
3.4.1.	<i>Waste Area and Access.....</i>	<i>5</i>
3.5.	<i>Signage.....</i>	<i>7</i>
3.6.	<i>Waste Collection Arrangements and Vehicle Access.....</i>	<i>7</i>
4.	Amenity Impacts.....	8
4.1.	<i>Ventilation/Odour Prevention.....</i>	<i>8</i>
4.2.	<i>Noise Reduction.....</i>	<i>8</i>
4.3.	<i>Vermin Prevention & Litter Management.....</i>	<i>8</i>
4.4.	<i>Washing Facilities and Stormwater Pollution.....</i>	<i>8</i>
5.	Ongoing Maintenance & Sustainability Initiatives.....	9
5.1.	<i>Maintenance Management.....</i>	<i>9</i>
5.2.	<i>Waste Reduction Strategies.....</i>	<i>9</i>
5.3.	<i>Waste Management Rules.....</i>	<i>10</i>
5.4.	<i>Monitoring and Review.....</i>	<i>10</i>
6.	Contact Information.....	11

This copied document to be made available for the sole purpose of enabling its consideration and review as part of a planning process under the Planning and Environment Act 1987. The document must not be used for any purpose which may breach any copyright

List of Figures

Figure 1: Temporary Bin Store - Stage 1	6
Figure 2: Permanent Bin Store – Stage 3 Onwards	6
Figure 3: Waste Signage Examples	7
Figure 4: Sustainability Victoria’s Waste Management Hierarchy	9

List of Tables

Table 1: Waste Streams	2
Table 2: Waste Generation Rates	4
Table 3: Expected Waste Generation for stage 1 and masterplan stage of the development	4
Table 4: Waste Bins and Collection Frequencies – Interim Stage (Stage 1)	4
Table 5: Waste Bins and Collection Frequencies – Complete Masterplan	5
Table 6: Bin Details and Colours	5
Table 7: Waste Area Requirements	7
Table 8: Supplier Contact Information	11

List of Appendices

Appendix A	Development Plans
Appendix B	Swept Path Diagrams

This copied document to be made available for the sole purpose of enabling its consideration and review as part of a planning process under the Planning and Environment Act 1987. The document must not be used for any purpose which may breach any copyright

1. Introduction

Traffix Group has been engaged by Catholic Education Sandhurst Limited (CESL) to prepare a Waste Management Plan for the Secondary School Development on John Schubert Drive in Baranduda.

This Waste Management Plan (WMP) is intended to act as a guideline for the proposed development and may be subject to the ongoing updates, post-development.

2. Proposal

The proposal is for the masterplan of the development of a new Catholic Secondary School in Baranduda on John Schubert Drive. The school is to be affiliated with the nearby existing St Francis of Assisi Primary School in Baranduda.

As a part of Stage 1 application, the school is to have up to 250 students and 28 staff.

Under the proposed masterplan for the school, it is to have ultimate enrolment of 800 students and 100 staff.

Vehicle access for the proposed school will be provided via an existing vehicle connection with John Schubert Drive at the southern boundary of the site. A secondary (southern access is proposed with Ellen McDondald Drive. During Stage 1, this access will connect to a temporary internal gravel roadway that is to extend to the on-site car park.

A temporary bin store for Stage 1 is identified to the east of the John Schubert Drive vehicle access near the internal roundabout. Waste collection will occur on-site via a private contractor using a rear-loader truck (up to approximately 10.2m long).

At Stage 3, a permanent bin store will be established just north of the proposed southern Ellen McDonald Drive access. Waste collection from Stage 3 onwards will occur within the internal roadway adjacent to the bin store.

Waste collection is proposed on-site via a private contractor. During Stage 1, the waste truck will utilise the John Schubert Drive access to enter and exit the site in a forward direction, propping temporarily within the internal roundabout to unload bins. From Stage 3 onwards, the waste truck will enter and exit via Ellen McDonald Drive in a forwards direction, and unload bins within the roadway adjacent to the permanent bin store.

A copy of the Masterplan and Stage 1 plan, prepared by Law Architects is attached at Appendix A.

This copied document to be made available for the sole purpose of enabling its consideration and review as part of a planning process under the Planning and Environment Act 1987. The document must not be used for any purpose which may breach any copyright

Waste Management Plan

3. Waste Management Plan

3.1. Waste Systems

The waste management systems of the development comprise of the following components:

- Immediate smaller bins within classrooms and teaching areas for temporary storage of garbage and recyclable waste prior to transferring to the Mobile Garbage bins (MGB's),
- Mobile garbage bins (MGB's) within the nominated waste storage area, waste from smaller bins to be transferred into the consolidated bins by cleaners and facility management staff.

3.2. Management of Waste Streams

The waste generated by the development will be separated and managed into the following waste streams:

- General Garbage Waste (Food and Organics/Green Waste), and
- Other Commingled Recycling (Paper & Cardboard Recycling).

Glass waste generated by the school will be minimal. Students are not permitted to bring glass receptacles to school.

The management of each of the streams/systems is detailed below.

Table 1: Waste Streams

Waste Type	Waste Management
Garbage	<p>Staff and students will place general landfill waste into smaller lined bins within the classrooms, administration, teaching areas and external areas such as outdoor areas etc.</p> <p>Ground/Custodial staff will collect tied plastic bags from classrooms and teaching areas and dispose of the bagged garbage directly into the garbage bin within the nominated waste storage area.</p>
Recycling	<p>Staff and students will place loose recyclable items into smaller bins within classrooms, administration, teaching areas and external areas such as outdoor areas etc.</p> <p>Ground/Custodial staff will collect recyclable items from classrooms and teaching areas and dispose of the waste directly into the recycling bin within the nominated waste storage area.</p>
FOGO	<p>Any food organic waste can be disposed of within the general garbage bins or collected separately within food tech classrooms. Staff will transfer any food/organic waste to the compost bin(s) to be located within the school yard.</p> <p>Any garden waste will be managed and disposed of by the maintenance team through coordination with the landscaping contractor. A green skip bin can be provided on site.</p>

This copied document to be made available for the sole purpose of enabling its consideration and review as part of a planning process under the Planning and Environment Act 1987. The document must not be used for any purpose which may breach any copyright.

Waste Management Plan

Waste Type	Waste Management
Paper & cardboard	A dedicated paper & cardboard bin(s) is not warranted, and any paper & cardboard waste shall be accommodated within the commingled recycling bin as required.
Hard Waste	The school will dispose of any hard waste via a private contractor on a required basis. All hard waste is managed by facilities management and stored on-site in maintenance/suitable area until off-site disposal shall be coordinated via private contractor.
Other	The school will dispose of e-waste including batteries, phones, computers etc. via a private contractor or drop it off at Wodonga Resource Recovery Centre (29 Kane Road, Wodonga). E-waste must not be disposed in landfill.

3.3. Waste Generation

3.3.1. Overall Generation Rates

The development has been assessed against the waste generation rates specified under the *Better Practice Guide for Waste Management and Recycling in Multi-unit Developments* by Sustainability Victoria.

As part of a future stage (i.e. not included within Stage 1), the school is to include Food Tech practical kitchen classes which will generate additional waste compared to a typical classroom.

There is no additional information provided in relation to this use. For the purpose of our assessment, we have allowed for up to 250 persons/meals per week which equates to 250L of garbage waste and 250L of recycling waste.

To estimate waste generation by the Food Tech kitchen classes, we refer to the NSW Port Macquarie Hastings Council event waste management guidelines¹ which specifies one litre of garbage waste, and one litre of recycling waste will be generated per person/meal.

This copied document to be made available for the sole purpose of enabling its consideration and review as part of a planning process under the Planning and Environment Act 1987. The document must not be used for any purpose which may breach any copyright

¹ NSW guidelines by Port Macquarie Hastings Council for events waste management plan www.pmhc.nsw.gov.au/fevents/event-waste-management-guidelines-june-2023.pdf

Waste Management Plan

Table 2 sets out the expected waste generation for the Secondary School Development.

Table 2: Waste Generation Rates

Waste Source	Garbage	Recycling
Education/Training (teaching space)	5L/100m ² floor area/day	5L/100m ² floor area/day
Food Tech Classes (Inc. Kitchen) ²	1L waste/person/meal	1L waste/person/meal

An estimate of the total waste generated by the development is detailed in Table 3.

Table 3: Expected Waste Generation for stage 1 and masterplan stage of the development

Waste Source	Estimated Area	Garbage/week	Recycling/week'
Stage 1 (Interim Stage)	~1,400 m ²	350 L per week	350 L per week
Masterplan (inc. food tech. classes)	~7,400 m ²	1,850 L per week	1,850 L per week
	Food Tech (250 meals)	250 L per week	250 L per week
	<i>Total</i>	<i>2,100 L per week</i>	<i>2,100 L per week</i>

3.4. Waste Equipment (MGBs)

Based on the determined waste generation, at the interim stage (Stage 1) the proposed school would require the following bins and collection as shown at Table 4.

Table 4: Waste Bins and Collection Frequencies – Interim Stage (Stage 1)

Waste Stream	Waste Volume (L/week)	Bin Capacity	No. of Bins Required	Collection Frequency (per week)
Garbage	350L	1,100L	1 no.	1
Recycling	350 L	1,100L	1 no.	1

This copied document to be made available for the sole purpose of enabling its consideration and review as part of a planning process under the Planning and Environment Act 1987. The document must not be used for any purpose which may breach any copyright

² Not included in Stage 1 calculations as Food Tech classrooms will be delivered as part of future development stage.

Waste Management Plan

Table 5 provides a summary of the nominated waste storage area provisions and the frequency of collection for the complete masterplan stage.

Table 5: Waste Bins and Collection Frequencies – Complete Masterplan

Waste Stream	Waste Volume (L/week)	Bin Capacity	No. of Bins Required	Collection Frequency (per week)
Garbage	7,400 L	1,100L	2 no.	1
Recycling	7,400 L	1,100L	2 no.	1

At the complete masterplan stage, the school would require the following bins:

- 4 x 1,100L bins

Importantly, the size of permanent waste area to be established in Stage 3 is to be sufficient to accommodate the additional bins required for the complete masterplan stage as shown in Figure 1.

Further details regarding the waste equipment required for the development are detailed in Table 6.

Table 6: Bin Details and Colours

Waste Stream	Bin Capacity	Dimensions (H x W x D) ^{Note 1}	Bin Lid Colour ^{Note 2}	Bin Body Colour ^{Note 2}
Garbage	1,100L	1,300 x 1,194 x 1,080mm	Red	Dark Green
Recycling	1,100L	1,300 x 1,194 x 1,080mm	Yellow	

Note 1. Bin capacity and dimensions are provided as an indicative dimension, sourced from Bin Supplier, 'Sulo'.

Note 2. Bin lid and body colours are based on the bin colour scheme set out by Sustainability Victoria.

3.4.1. Waste Area and Access

At Stage 1, a bin store is identified to the east of the John Schubert Drive vehicle access near the internal roundabout. This bin store is to be a temporary arrangement for Stage 1, with a permanent bin store to be established near the southern Ellen McDonald Drive access at Stage 3.

The waste storage area and access route at Stage 1 is illustrated at Figure 1.

This copied document to be made available for the sole purpose of enabling its consideration and review as part of a planning process under the Planning and Environment Act 1987. The document must not be used for any purpose which may breach any copyright

ADVERTISED PLAN

Waste Management Plan

Baranduda Catholic Secondary School, Baranduda – Masterplan

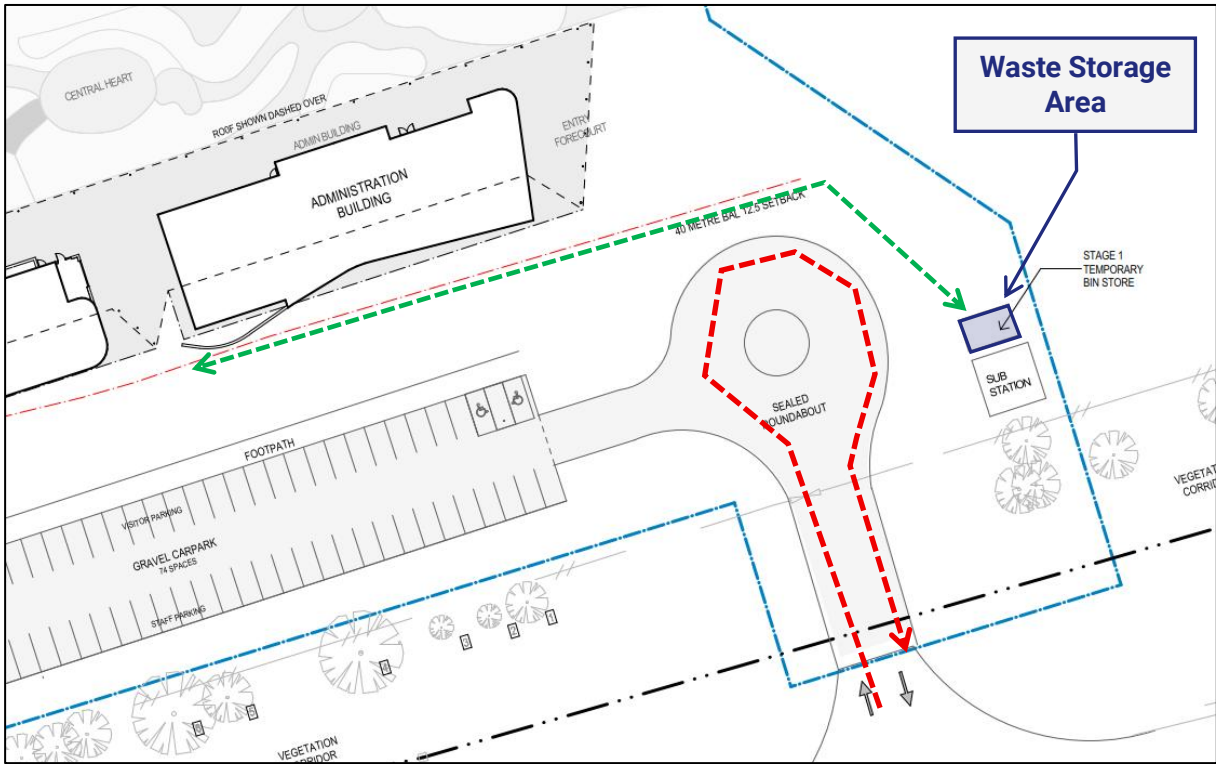


Figure 1: Temporary Bin Store - Stage 1

The waste storage area and access route for the Masterplan which will commence in Stage 3 is illustrated at Figure 2.

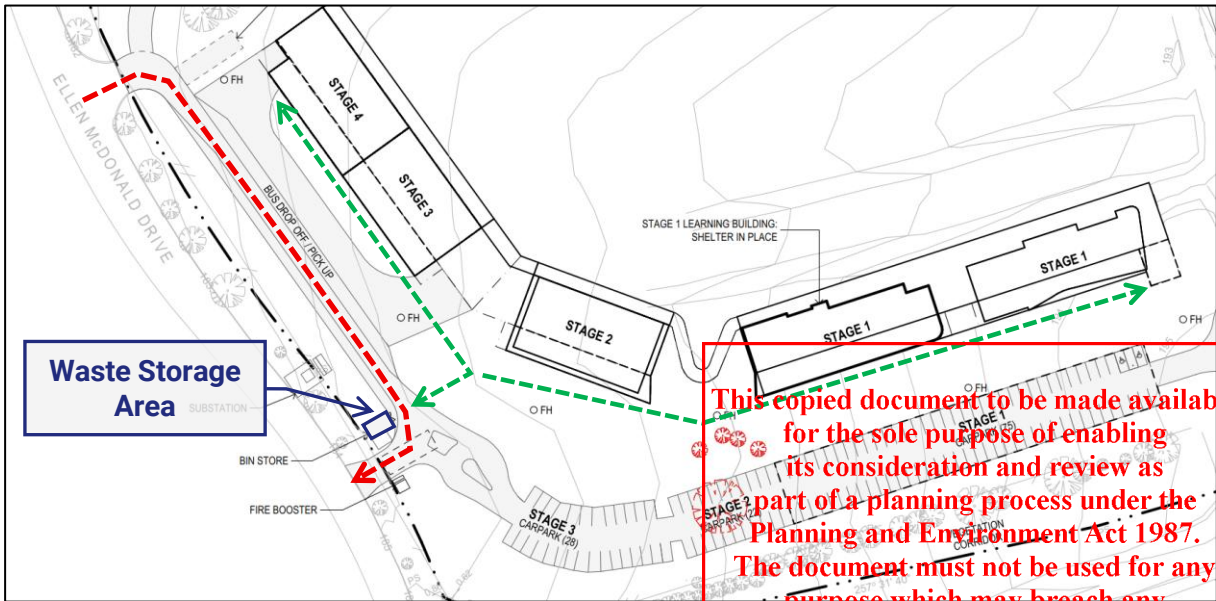


Figure 2: Permanent Bin Store – Stage 3 Onwards

This copied document to be made available for the sole purpose of enabling its consideration and review as part of a planning process under the Planning and Environment Act 1987. The document must not be used for any purpose which may breach any copyright

Table 7 details the waste area requirements based on the waste equipment proposed.

Waste Management Plan

Table 7: Waste Area Requirements

Use	Waste Equipment	Net Area ¹	Quantity	Net Bin Storage Area Required	Waste Area Provided
Complete Masterplan	1,100L	1.33 m ²	4	5.32m ²	>5.32m ²

Note 1: Net area required is calculated from the dimensions of the bins.

Based on the above, sufficient space is provided for with the waste store for the ultimate garbage and recycling bins.

3.5. Signage

Appropriate signage in accordance with Sustainability Victoria will be displayed on the bins and within the waste area, as illustrated in Figure 3.

The signage will help guide and encourage staff/cleaners of the secondary school to dispose of waste correctly into the appropriate waste streams.

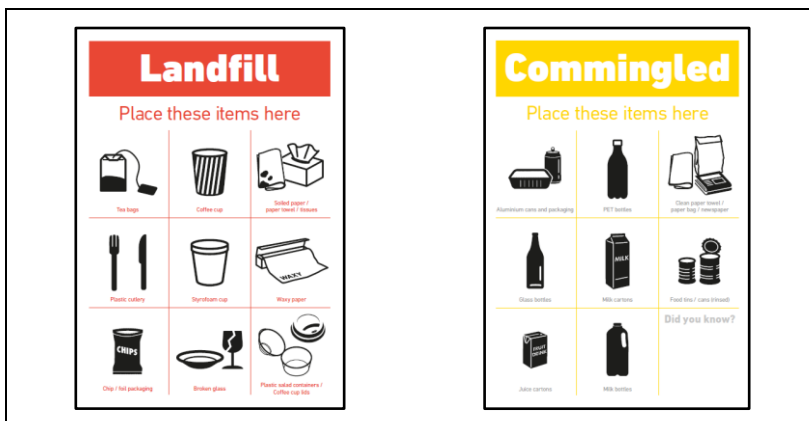


Figure 3: Waste Signage Examples

This copied document to be made available for the sole purpose of enabling its consideration and review as part of a planning process under the Planning and Environment Act 1987. The document must not be used for any purpose which may breach any copyright

3.6. Waste Collection Arrangements and Vehicle Access

A temporary Stage 1 bin store is identified to the east of the John Schubert Drive vehicle access near the internal roundabout. Waste collection will occur on-site via a private contractor using a rear-loader truck (up to an approximate 10.2m long) or equivalent.

The waste storage area at Stage 1 is to be interim arrangement During Stage 1 of the development, the waste truck will utilise the John Schubert Drive access to enter and exit the site in a forward direction, propping temporarily within the internal roundabout to unload bins.

A permanent bin store is to be established as part of Stage 3 development of the School just north of the proposed southern Ellen McDonald Drive access. Waste collection from Stage 3 onwards will occur within the internal roadway adjacent to the bin store, with entry and exit via Ellen McDonald Drive in a forward direction.

Waste Management Plan

Waste collection must be scheduled to occur outside of school drop-off/pick-up periods.

Swept path diagrams demonstrating satisfactory entry and exit movements using a relevant rear-loaded waste collection vehicle for the Stage 1 development and Masterplan are attached at Appendix B.

4. Amenity Impacts

It is the responsibility of the maintenance team to carry out the ongoing maintenance of all waste areas to minimise the following amenity impacts.

4.1. Ventilation/Odour Prevention

For developments using forced ventilation or air-conditioning system, adequate ventilation will be provided within the bin store areas in accordance with AS1668.2 to ensure waste-related odours are minimised.

Waste areas will be frequently cleaned to prevent the retainment of odours.

4.2. Noise Reduction

The waste facilities will comply with BCA and AS2107 acoustic requirements. Private waste collection will follow Council's and EPA guidelines to ensure acoustic impact is minimised.

Collection days and times will be determined following the confirmation of a specific private waste collection contractor by the maintenance team. Waste collection times should comply with the EPA Noise Control Guidelines (Publication 1254):

Industrial Waste Collection

- Collections occurring once a week should be restricted to the hours 6:30am – 8pm Monday to Saturday, 9am – 8pm Sunday and public holidays
- Collections occurring more than once a week should be restricted to the hours 7 am – 8pm Monday to Saturday, 9am – 8pm Sunday and public holidays

4.3. Vermin Prevention & Litter Management

Waste areas will be secured to prevent any unauthorised use. Waste areas will be monitored by the property manager to ensure that bins are not overfilled and any spillage resulting from waste collection is appropriately addressed. All access doors and bin lids will be kept closed at all times to prevent vermin access to the waste areas.

4.4. Washing Facilities and Stormwater Pollution

Third party contractors can be engaged for proper washing and cleaning of bins as part of Stage 1 arrangements.

As part of Stage 3 when a permanent waste store is established, a washing facility should be considered including water supply and hose for the regular washing of the bins and waste

This copied document to be made available for the sole purpose of enabling its consideration and review as part of a planning process under the Planning and Environment Act 1987. The document must not be used for any purpose which may breach any copyright

Waste Management Plan

area. A future washing facility shall be connected to the sewerage for drainage to prevent any stormwater pollution.

5. Ongoing Maintenance & Sustainability Initiatives

5.1. Maintenance Management

Further to the occupation of the proposed development, it is the responsibility of the maintenance team for the ongoing operation and maintenance of the Waste Management Plan.

The maintenance team will ensure that maintenance work and upgrades are carried out on the waste areas and components of the waste system. When required, the maintenance team will engage an appropriate contractor to conduct maintenance services, replacements, or upgrades.

All ongoing costs are to be fully met by owner(s) of the site.

5.2. Waste Reduction Strategies

The maintenance team will be responsible to encourage students/staff of the proposed secondary school to reduce waste disposal and recycle materials based on the waste management hierarchy set out by Sustainability Victoria.

The hierarchy is detailed at Figure 4 below.

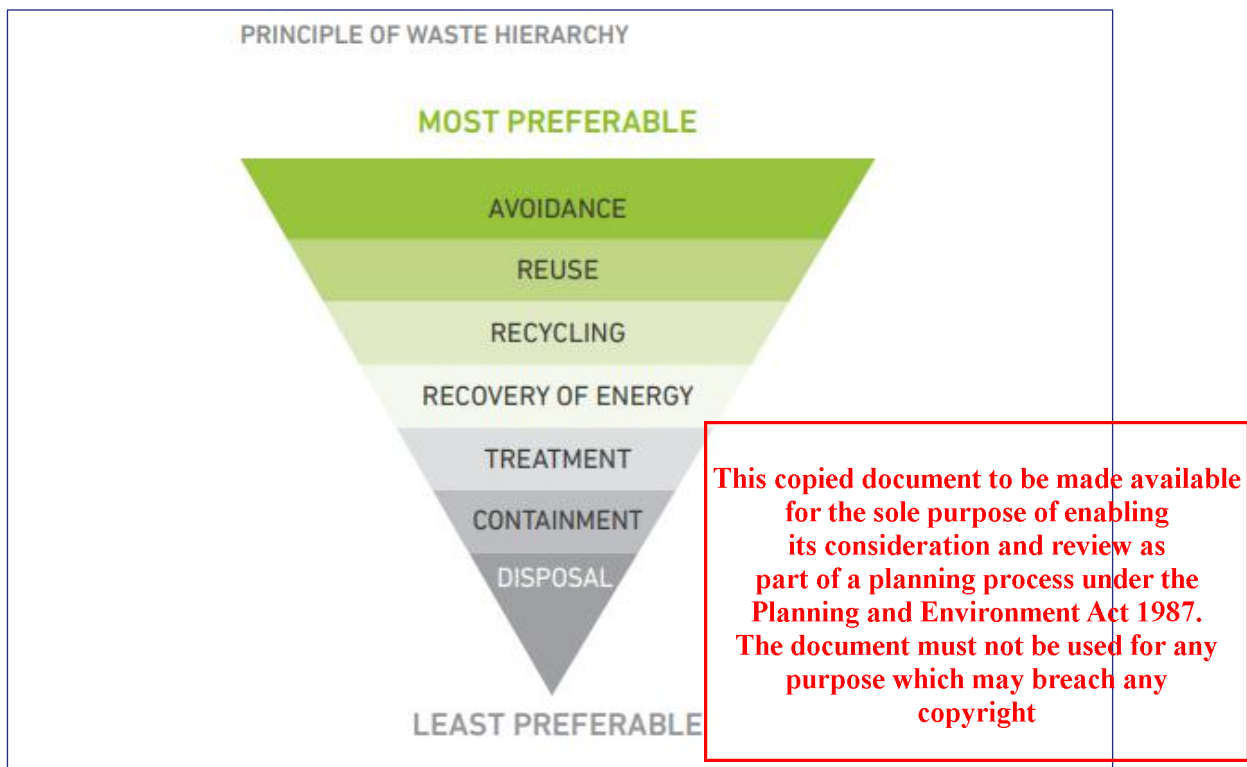


Figure 4: Sustainability Victoria's Waste Management Hierarchy

Waste Management Plan

Additionally, the maintenance team can set targets and measures to reduce garbage going to landfill and increase recycling and choose to participate in Council's waste programs to promote sustainability initiatives.

5.3. Waste Management Rules

It will be the responsibility of the maintenance team to ensure all staff are provided with the relevant information and materials regarding the waste management system and sustainability strategies of the proposed development.

Relevant information will be provided at the waste areas to ensure that all users will operate and maintain safe practice when utilising the waste facilities.

5.4. Monitoring and Review

This Waste Management Plan should be monitored and reviewed on a regular basis to ensure that it meets the regulatory requirements and the expected waste generation rates outlined in Section 3.3. The maintenance team will be responsible for monitoring the Waste Management Plan. Where required, the maintenance team should undertake a waste audit to identify any modifications and/or improvements to the waste management system.

This Waste Management Plan report may also need to be updated as part of future stages of development when necessary.

This copied document to be made available for the sole purpose of enabling its consideration and review as part of a planning process under the Planning and Environment Act 1987. The document must not be used for any purpose which may breach any copyright

6. Contact Information

Table 8 provides a list of common waste collection service contractors and waste equipment suppliers. The maintenance team is not obligated to procure goods/services from the following suppliers and reserves the right to choose their own preferred suppliers.

Traffix Group does not make representations for the goods/services provided by the suppliers listed below.

Table 8: Supplier Contact Information

Service Type	Business Name	Phone	Website
Private Waste Collectors	Citywide Waste	03 9261 5000	www.citywide.com.au
	Cleanaway	13 13 39	www.cleanaway.com.au
	Veolia	13 29 55	www.veolia.com/anz
	JJ Richards	03 9794 5722	www.jjrichards.com.au
	Waste Wise Environmental	1300 550 408	www.wastewise.com.au
	Kartaway	1300 362 362	www.kartaway.com.au
	iDump	1300 443 867	www.idump.com.au
	Waste Ninja	1300 648 088	www.wasteninja.com.au
E-Waste Collection	TechCollect	1300 229 837	www.techcollect.com.au
Equipment Supplier	Sulo Australian (bin supplier)	03 9357 7320	www.sulo.com.au
	Mr Wheelie Bin (bin supplier)	03 9912 2850	www.mrwheeliebin.com.au
	Eco-safe Technologies (odour control system)	1300 135 039	www.eco-safe.com.au
Bin Washing Services	The Bin Butlers	1300 788 123	www.thebinbutlers.com.au
	WBCM Environmental Australia	1300 800 621	www.wbcm-aust.com.au
	Kerbside Clean-A-Bin	03 9588 1944	www.kerbsidecleanabin.com.au

This copied document to be made available for the sole purpose of enabling its consideration and review as part of a planning process under the Planning and Environment Act 1987. The document must not be used for any purpose which may breach any copyright

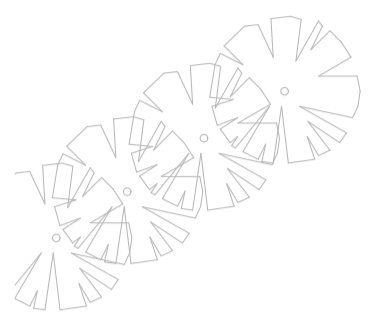


**ADVERTISED
PLAN**

Appendix A

Development Plans

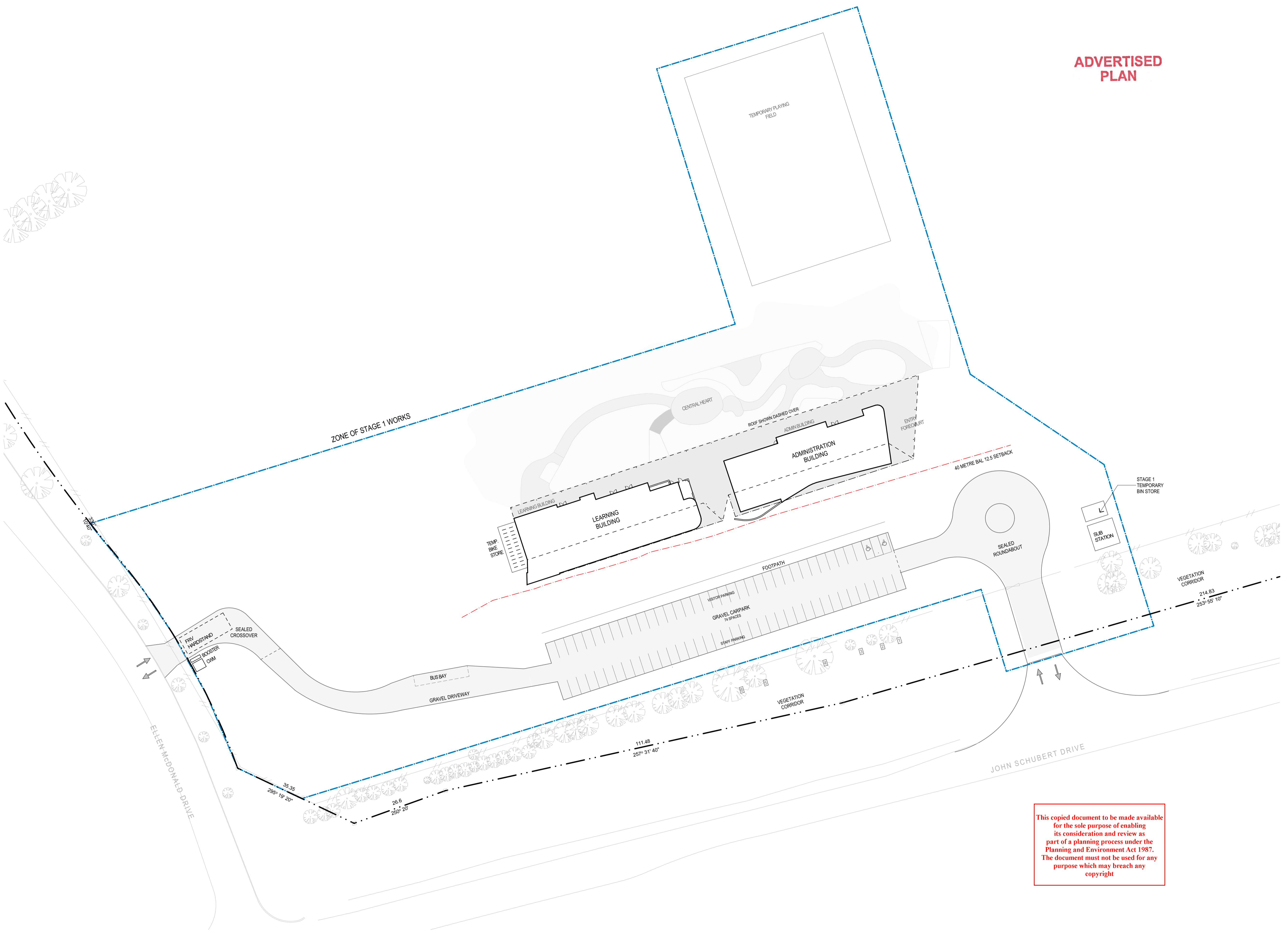
This copied document to be made available for the sole purpose of enabling its consideration and review as part of a planning process under the Planning and Environment Act 1987. The document must not be used for any purpose which may breach any copyright



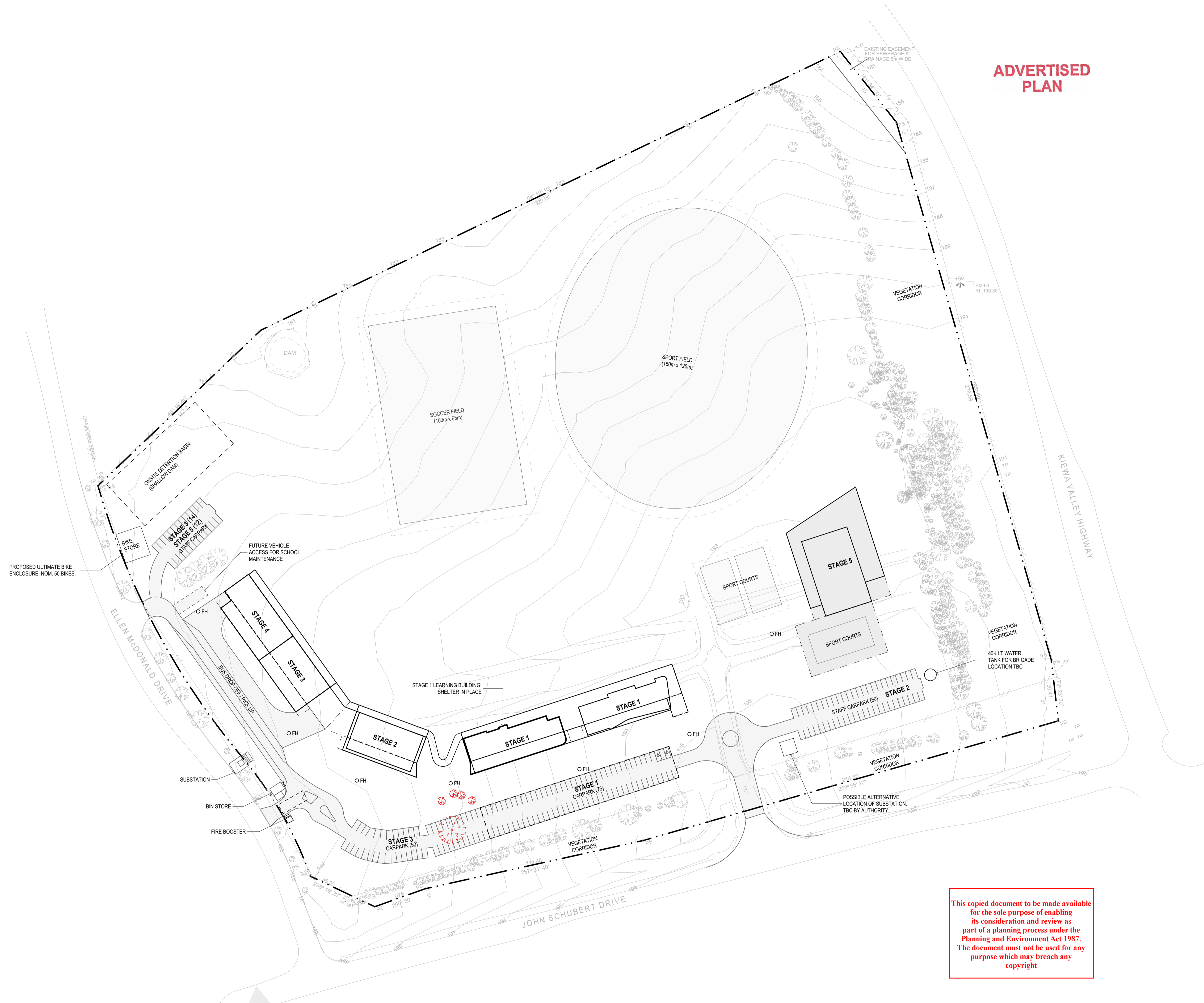
- LEGEND**
- ZONE OF STAGE 1 WORKS
 - SITE BOUNDARY
 - EXISTING TREES
 - VEHICLE DIRECTIONAL ARROW

- NOTES**
- REFER CIVIL DRAINAGE PLAN FOR ALL DRAINAGE WORKS
 - REFER LANDSCAPE PLAN FOR ALL LANDSCAPE WORKS
 - REFER ARBORIST REPORT
 - REFER TRAFFIC REPORT
 - REFER WASTE REPORT
 - REFER BUSHFIRE REPORT

ADVERTISED PLAN



This copied document to be made available for the sole purpose of enabling its consideration and review as part of a planning process under the Planning and Environment Act 1987. The document must not be used for any purpose which may breach any copyright.



ADVERTISED PLAN

- LEGEND**
- SITE BOUNDARY
 - EXISTING TREES
 - NRZ- NOMINAL ROOT ZONE
 - TREE TO BE REMOVED
 - O FH DUAL HEAD EXTERNAL ATTACK HYDRANT
 - VEHICLE DIRECTIONAL ARROW

- MASTER PLAN STAGES:**
- STAGE 1:**
- NEW ADMINISTRATION BUILDING
 - NEW LEARNING BUILDING
 - NEW CARPARK AND CROSSOVER (JOHN SCHUBERT & SOUTHERN ELLEN McDONALD DR)
 - NEW LANDSCAPING AND SITE SERVICES
 - TEMPORARY BIKE & BIN STORE
- STAGE 2:**
- NEW LEARNING AND SCIENCE BUILDING
 - NEW LANDSCAPING
 - STAFF CARPARK (EAST)
- STAGE 3:**
- NEW LEARNING AND ARTS CENTRE
 - NEW LANDSCAPING
 - NEW SPORTS FIELD
 - MAIN CARPARK EXTENSION & U-TURN PROVISION
 - BUS PARKING (NORTHERN ELLEN McDONALD DR ACCESS)
 - FINAL BIKE & BIN STORE
- STAGE 4:**
- NEW LEARNING AND TECHNOLOGY BUILDING
 - NEW LANDSCAPING
 - NEW OVAL AND OUTDOOR COURTS
- STAGE 5:**
- NEW GYMNASIUM AND COVERED COURTS
 - STAFF CARPARK (NORTH-WEST)

This copied document to be made available for the sole purpose of enabling its consideration and review as part of a planning process under the Planning and Environment Act 1987. The document must not be used for any purpose which may breach any copyright



**ADVERTISED
PLAN**

Appendix B

Swept Path Diagrams

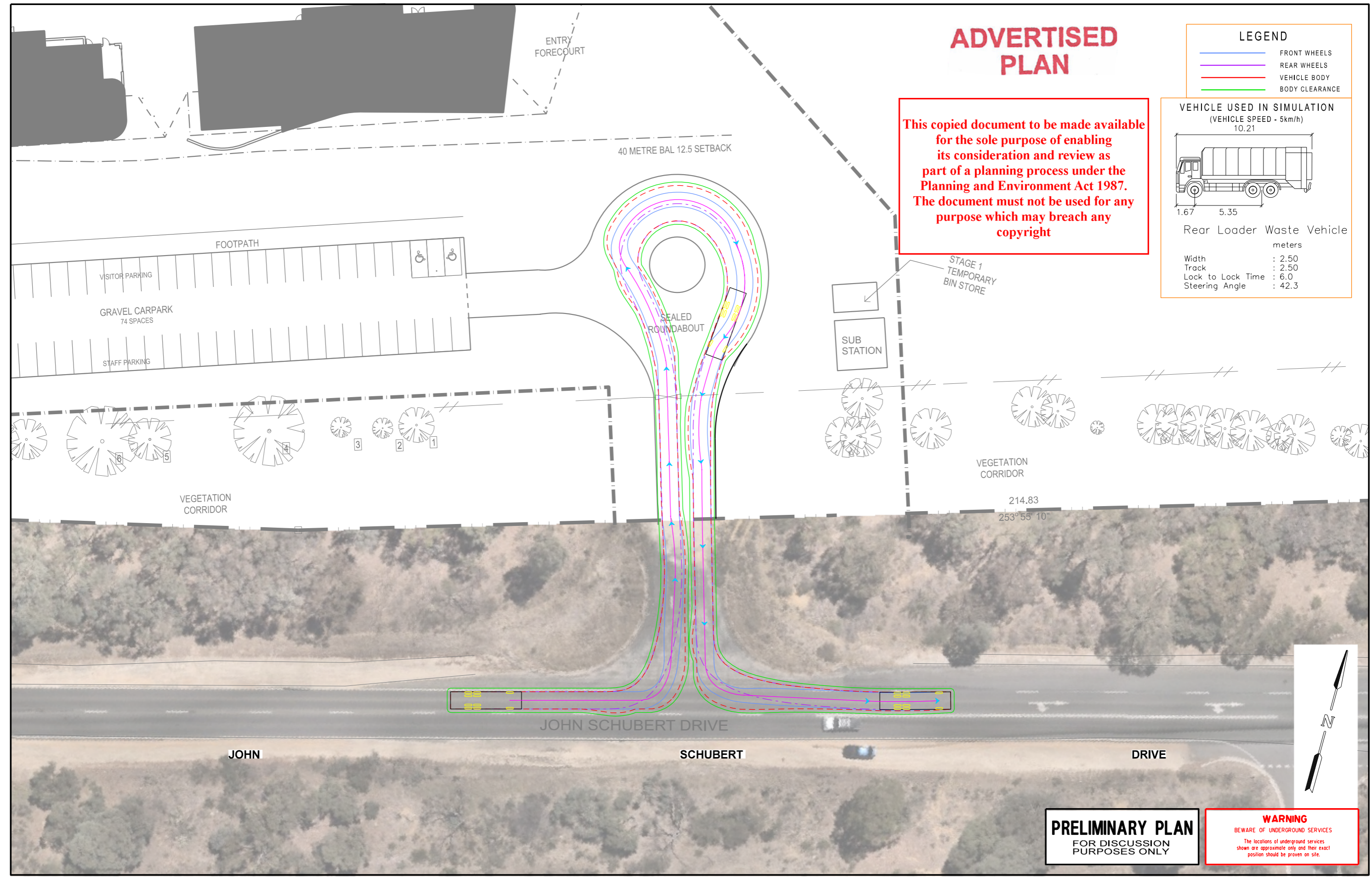
This copied document to be made available for the sole purpose of enabling its consideration and review as part of a planning process under the Planning and Environment Act 1987. The document must not be used for any purpose which may breach any copyright

ADVERTISED PLAN

LEGEND	
	FRONT WHEELS
	REAR WHEELS
	VEHICLE BODY
	BODY CLEARANCE

This copied document to be made available for the sole purpose of enabling its consideration and review as part of a planning process under the Planning and Environment Act 1987. The document must not be used for any purpose which may breach any copyright

VEHICLE USED IN SIMULATION	
(VEHICLE SPEED - 5km/h)	
10.21	
1.67	5.35
Rear Loader Waste Vehicle	
meters	
Width	: 2.50
Track	: 2.50
Lock to Lock Time	: 6.0
Steering Angle	: 42.3



PRELIMINARY PLAN
FOR DISCUSSION
PURPOSES ONLY

WARNING
BEWARE OF UNDERGROUND SERVICES
The locations of underground services shown are approximate only and their exact position should be proven on site.

DATE: 09/13/26
MODEL: G37148-02-03
FILE: \\msrv02\Group\Synergy\Projects\Projects\G37148-02-00.dgn

ISSUE	ISSUE DESCRIPTION	DESIGNER	CHECKED/APPROVED	ISSUE DATE	GENERAL NOTES
A	INITIAL ISSUE	P. NGUYEN	B.C.(RPE7582)	12/02/2026	1 BASE INFORMATION FROM AERIAL PHOTOGRAPH (SOURCE NEARMAP JUL 2025) AND ARCHITECTURAL PLANS (SOURCE LAW ARCHITECTS FEB 2026) 2 ALL DIMENSIONS ARE TO FACE OF KERB & CHANNE OR EDGE LINE 3 MAIN ROAD - JOHN SCHUBERT DRIVE (SPEED ZONE 70km/h)

DESIGNED P. NGUYEN
CHECKED/APPROVED B. CHISHOLM
FILE NAME G37148-02-00.dgn

Traffix Group
Level 28, 459 Collins Street
Melbourne, Victoria 3000
+61 3 9822 2888
www.traffixgroup.com.au

BARANDUDA CATHOLIC SECONDARY COLLEGE
BARANDUDA
WODONGA COUNCIL
10.2m REAR LOADER WASTE TRUCK SWEEP PATHS

SCALE 0 2.5 5 7.5 10
1:500 (A3)

SHEET No. 3/4 DWG No. G37148-02-03

ADVERTISED PLAN

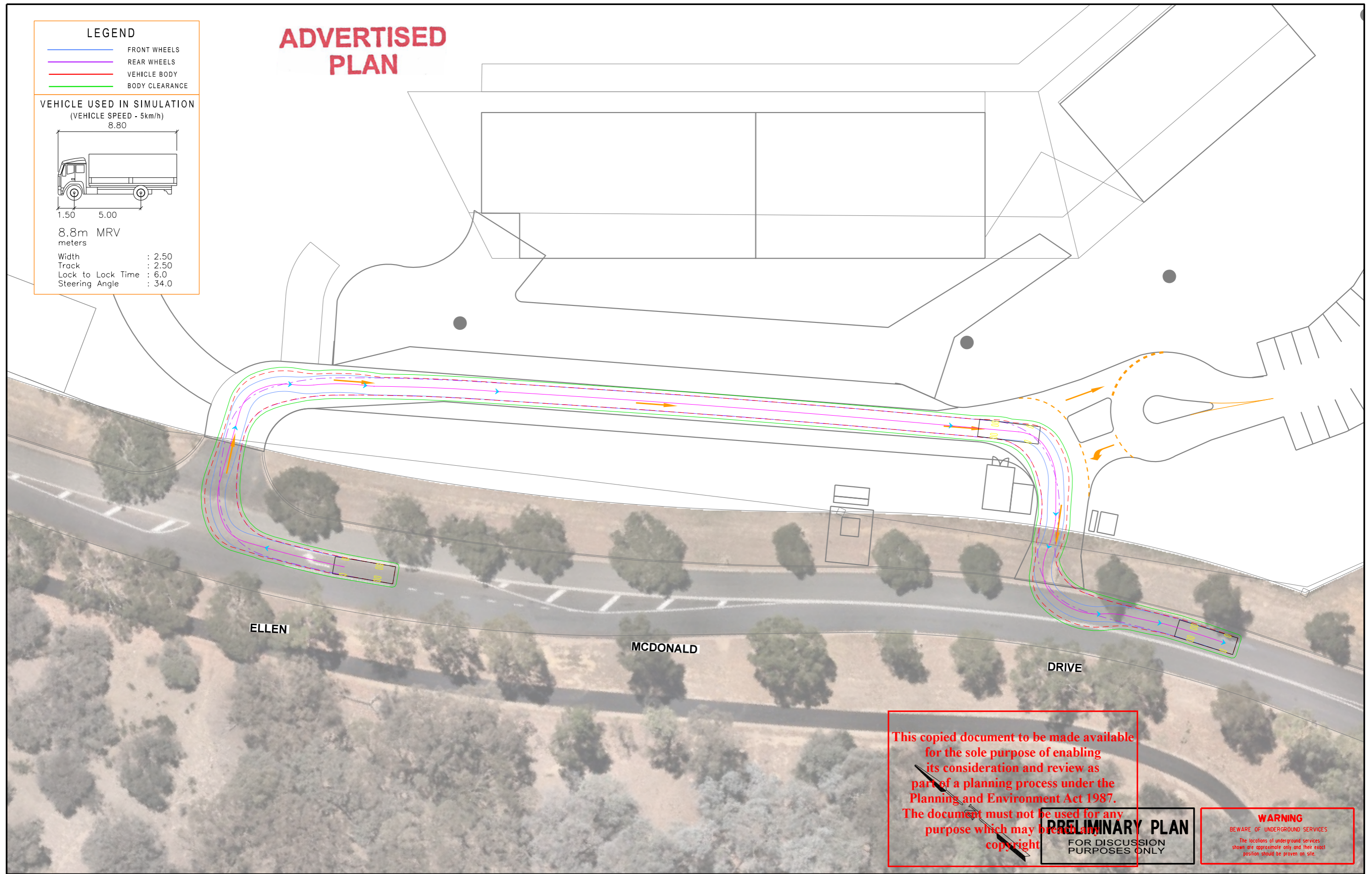
LEGEND

- FRONT WHEELS
- REAR WHEELS
- VEHICLE BODY
- BODY CLEARANCE

VEHICLE USED IN SIMULATION
(VEHICLE SPEED - 5km/h)
8.80

8.8m MRV
meters

Width : 2.50
Track : 2.50
Lock to Lock Time : 6.0
Steering Angle : 34.0



This copied document to be made available for the sole purpose of enabling its consideration and review as part of a planning process under the Planning and Environment Act 1987. The document must not be used for any purpose which may breach any copyright.

PRELIMINARY PLAN
FOR DISCUSSION PURPOSES ONLY

WARNING
BEWARE OF UNDERGROUND SERVICES
The locations of underground services shown are approximate only and their exact position should be proven on site.

DATE: 31/03/2026
MODEL: G37148-02-06
FILE: \\ussrv02\group\Sydney\Projects\GRP\GRP37148\02-Drawings\G37148-02-00.dgn

ISSUE	ISSUE DESCRIPTION	DESIGNER	CHECKED/APPROVED	ISSUE DATE
A	INITIAL ISSUE	P. NGUYEN	B.C(RPE7582)	31/03/2026

GENERAL NOTES

- 1 BASE INFORMATION FROM AERIAL PHOTOGRAPH (SOURCE NEARMAP JUL 2025) AND ARCHITECTURAL PLANS (SOURCE LAW ARCHITECTS MAR 2026)
- 2 ALL DIMENSIONS ARE TO FACE OF KERB & CHANNE OR EDGE LINE
- 3 MAIN ROAD - ELLEN MCDONALD DRIVE (SPEED ZONE 70km/h)

DESIGNED
P. NGUYEN

CHECKED/APPROVED
B. CHISHOLM

FILE NAME
G37148-02-00.dgn

Traffix Group

Level 28, 459 Collins Street
Melbourne, Victoria 3000
+61 3 9822 2888
www.traffixgroup.com.au

BARANDUDA CATHOLIC SECONDARY COLLEGE
BARANDUDA
WODONGA COUNCIL
8.8m MRV SWEEP PATHS

SCALE 0 2.5 5 7.5 10
1:500 (A3)

SHEET No. 2/5 DWG No. G37148-02-06