



This copied document to be made available for the sole purpose of enabling its consideration and review as part of a planning process under the Planning and Environment Act 1987. The document must not be used for any purpose which may breach any copyright

ADVERTISED PLAN

Notations
 Date of Survey:
 Lengths shown are in metres
 Contour Interval is 0.20 metres
 Levels shown on this plan are to the Australian Height Datum based on DJERRIWARRAH PM 686, RL 126.867 Dated 04/06/2008
 Features and Levels shown on this plan are for general design works only - any critical dimensions required should be requested independently of this plan. Prior to any demolition, excavation or construction on this site the relevant Authorities should be contacted to ascertain detailed locations of all existing services and the possible locations of future services.
 For site dimensions and easement details please refer to the relevant Certificate of Title.

The relationship between occupation and title shown thus ≈ 0.13 is not shown to scale and has been exaggerated for clarity. Occupation has been located by survey at these points only.

Point Symbol	Linetype	Description
x	—	Contour
x	- - - -	Top Of Bank
x	- - - -	Toe Of Bank
x	- - - -	Existing Surface
x	—	Water Tank
x	—	Fire Hydrant
x	—	Water Meter/house Connection
x	—	Water Marker Post/other Fittings
x	—	Fence
o	—	Gate
o	—	Downpipe

Point Symbol	Linetype	Description
x	—	Boundary Intersection
x	—	Bus & Tram Shelter
x	—	Electricity Mains Overhead
x	—	Electricity Pit
x	—	Sign
x	—	Shed
x	—	Building
x	—	Verandah
x	—	Headwall
x	—	Spoon Drain
x	—	Footpath
x	—	Lip Of Kerb

Point Symbol	Linetype	Description
—	—	Invert Of Kerb/channel
—	—	Back Of Kerb
—	—	Side Entry Pit
—	—	Light Pole

Point Symbol	Linetype	Description
—	—	Windows and Doors
—	—	SINGLE STOREY WINDOWS
—	—	DOUBLE STOREY WINDOWS
—	—	DOORS

Point Symbol	Linetype	Description
—	—	HW: Habitable Window
—	—	NHW: Non-habitable Window

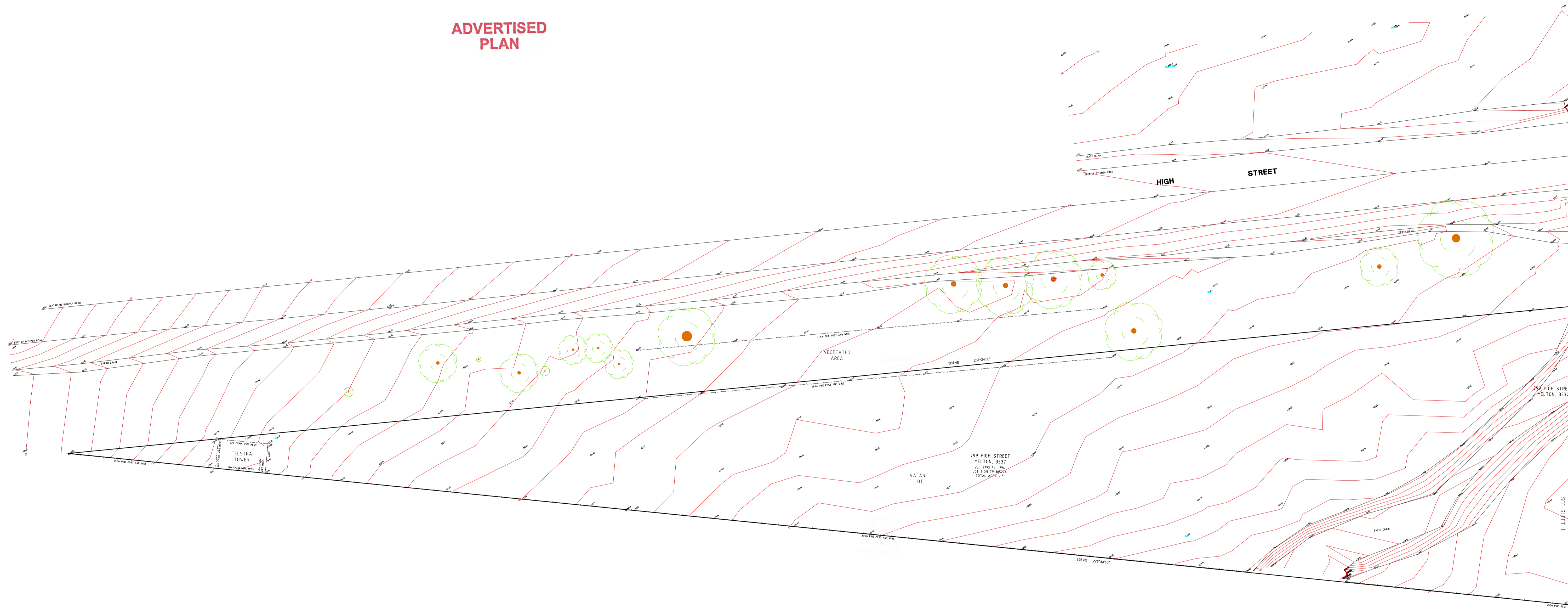
Sheet 1 of 2
 Reference 321896P01 - 02 No Hatch.dwg
 Version 2
 Date 30/04/2024
 Drawn by Tom Service | Checked by Jesse Gelfand

MGA2020 ZN55
 Original Scale at A1 1: 400
 Scale at A3 1: 800

Level and Feature Survey
OneSchool Melton West Campus
 775 High Street, Melton West

414 La Trobe Street
 PO Box 16084
 Melbourne Vic 8007
 T 61 3 9993 7888
 spiire.com.au

ADVERTISED PLAN



This copied document to be made available for the sole purpose of enabling its consideration and review as part of a planning process under the Planning and Environment Act 1987. The document must not be used for any purpose which may breach any copyright

Notations

Date of Survey:
Lengths shown are in metres
Contour Interval is 0.20 metres

Levels shown on this plan are to the Australian Height Datum based on DJERRIWARRAH PM 686, RL 126.867 Dated 04/06/2008

Features and Levels shown on this plan are for general design works only - any critical dimensions required should be requested independently of this plan. Prior to any demolition, excavation or construction on this site the relevant Authorities should be contacted to ascertain detailed locations of all existing services and the possible locations of future services. For site dimensions and easement details please refer to the relevant Certificate of Title.

The relationship between occupation and title shown thus 0.13 is not shown to scale and has been exaggerated for clarity. Occupation has been located by survey at these points only.

Legend

Point Symbol	Linetype	Description
x	—	Contour
x	- - - -	Top Of Bank
x	- - - -	Toe Of Bank
x	- - - -	Existing Surface
+	—	Water Tank
+	—	Fire Hydrant
+	—	Water Meter/house Connection
+	—	Water Marker Post/other Fittings
—	—	Fence
○	—	Gate
○	—	Downpipe

Point Symbol	Linetype	Description
—	—	Boundary Intersection
—	—	Bus & Tram Shelter
—	—	Electricity Mains Overhead
—	—	Electricity Pit
—	—	Sign
x	—	Shed
x	—	Building
x	—	Verandah
x	—	Headwall
x	—	Spoon Drain
x	—	Footpath
x	—	Lip Of Kerb

Point Symbol	Linetype	Description
—	—	Invert Of Kerb/channel
—	—	Back Of Kerb
—	—	Side Entry Pit
—	—	Light Pole
+	—	Windows and Doors
76-0H 75-SS	—	SINGLE STOREY WINDOWS
76-0H 75-SS	—	DOUBLE STOREY WINDOWS
76-0H 75-SS	—	DOORS
76-0H 75-SS	—	HW: Habitable Window NHW: Non-habitable Window

Sheet 2 of 2

Reference 321896P01 - 02 No Hatch.dwg

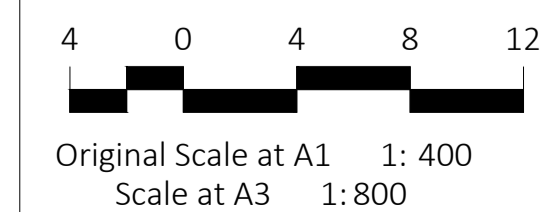
Version 2

Date 06/05/2024

Drawn by Tom Service | Checked by Jesse Gelfand



MGA2020 ZN55



Level and Feature Survey

OneSchool Melton West Campus
775 High Street, Melton West



414 La Trobe Street
PO Box 16084
Melbourne Vic 8007
T 61 3 9993 7888
spiire.com.au