

Imaged Document Cover Sheet

The document following this cover sheet is an imaged document supplied by LANDATA®, Victorian Land Registry Services.

Document Type	Plan
Document Identification	LP042498
Number of Pages (excluding this cover sheet)	3
Document Assembled	12/05/2021 09:38

Copyright and disclaimer notice:

© State of Victoria. This publication is copyright. No part may be reproduced by any process except in accordance with the provisions of the Copyright Act 1968 (Cth) and for the purposes of Section 32 of the Sale of Land Act 1962 or pursuant to a written agreement. The information is only valid at the time and in the form obtained from the LANDATA® System. None of the State of Victoria, LANDATA®, Victorian Land Registry Services Pty. Ltd. ABN 86 627 986 396 as trustee for the Victorian Land Registry Services Trust ABN 83 206 746 897 accept responsibility for any subsequent release, publication or reproduction of the information.

The document is invalid if this cover sheet is removed or altered.

This copied document to be made available for the sole purpose of enabling its consideration and review as part of a planning process under the Planning and Environment Act 1987. The document must not be used for any purpose which may breach any copyright

PLAN OF SUBDIVISION
PART OF CROWN ALLOTMENT C SECTION 12

LP 42498

PARISH OF DANDENONG

COUNTY OF BOURKE

VOL. 6446 FOL. 153

Measurements are in Feet & Inches

Conversion Factor

FEET x 0.3048 = METRES

EDITION 2

PLAN MAY BE LODGED
31-3-1958

2 SHEETS
SHEET 1



COLOUR CODE

- E-1 = BLUE
- E-2 = PURPLE
- E-3 = GREEN
- R1 & R2 = BROWN

APPROPRIATIONS

THE LAND COLOURED BLUE AND PURPLE IS APPROPRIATED OR SET APART FOR EASEMENTS OF DRAINAGE AND SEWERAGE AND IS 8 FEET WIDE

THE LAND COLOURED GREEN IS APPROPRIATED OR SET APART FOR EASEMENTS OF SEWERAGE AND IS 6 FEET WIDE

THE LAND COLOURED BROWN IS APPROPRIATED OR SET APART FOR EASEMENTS OF WAY & DRAINAGE

ENCUMBRANCES

PART OF ROAD R2 IS ENCUMBERED BY CARRIAGEWAY & DRAINAGE EASEMENTS CREATED BY INST. 1134274

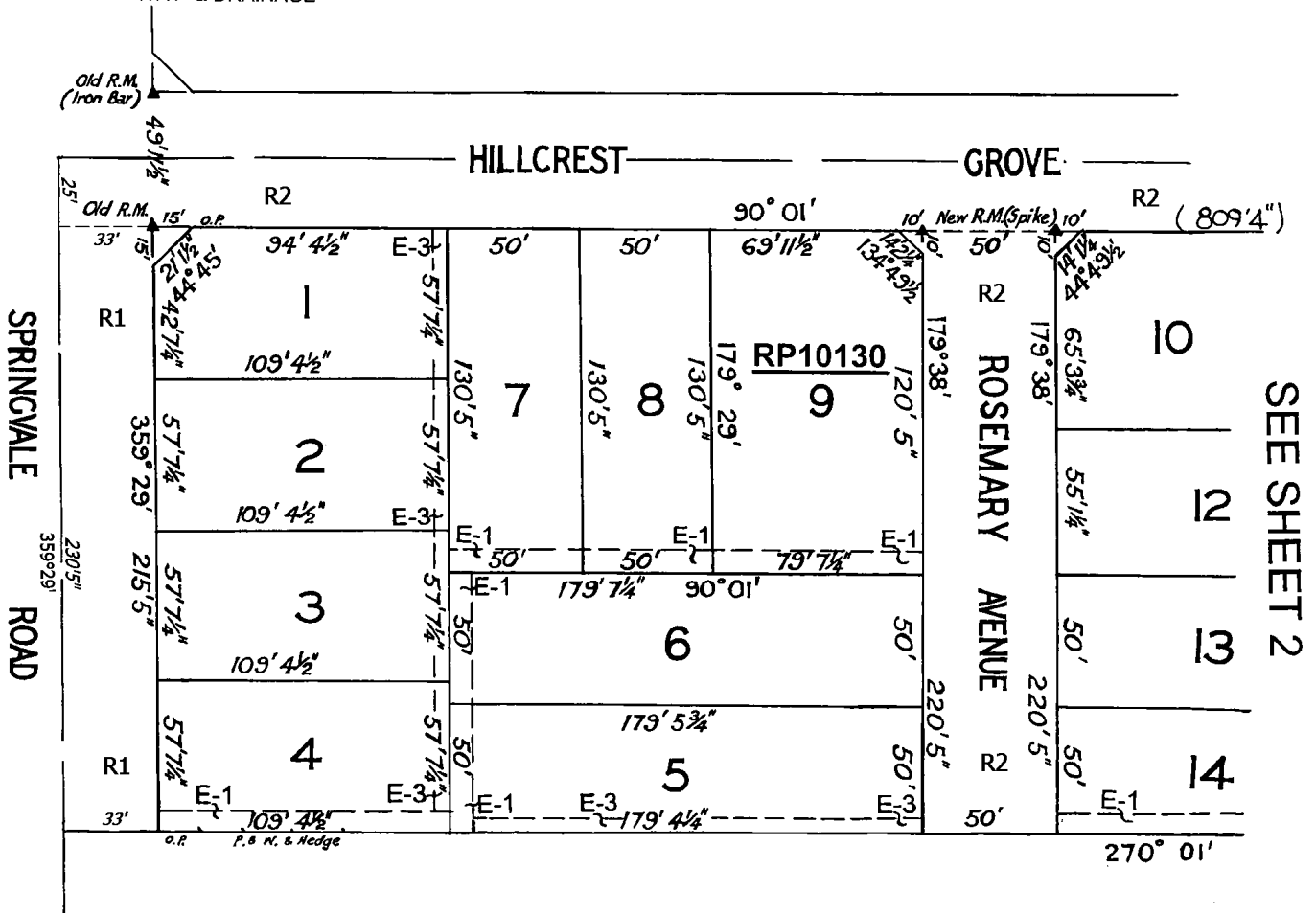
ROSEMARY AVENUE & TYREE AVENUE ARE ENCUMBERED BY A RIGHT OF CARRIAGEWAY CREATED BY INST. A711871

APPURTENANCIES

FOR APPURTENANT EASEMENTS SEE CERTIFICATE OF TITLE VOL. 6446 FOL. 153

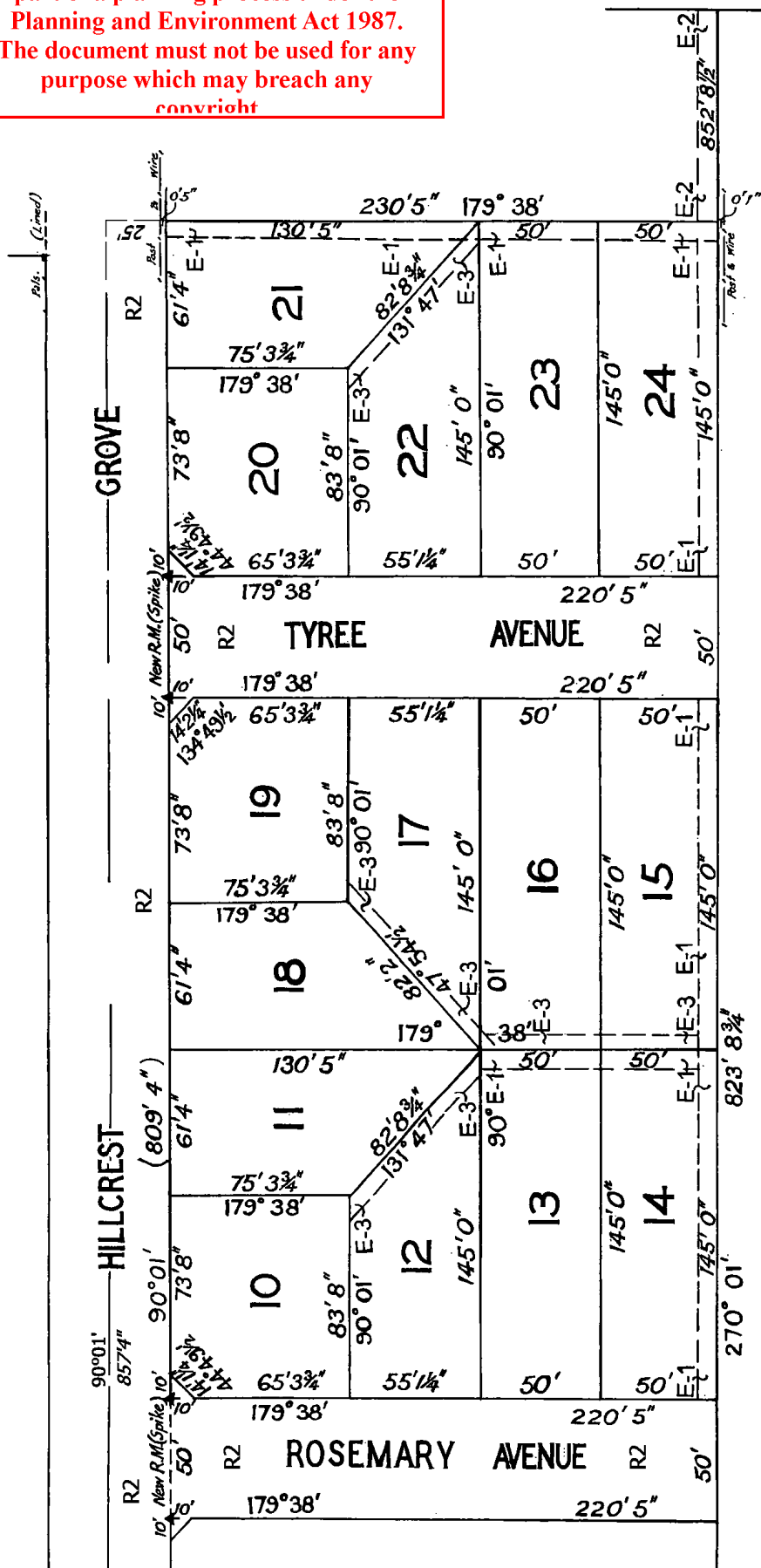
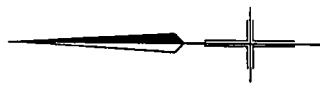
STREET NAME AMENDED

FROM: YOUNGS AVENUE
TO: ROSEMARY AVENUE
VIDE: GAZ. 1962 PAGE 383



This copied document to be made available for the sole purpose of enabling its consideration and review as part of a planning process under the Planning and Environment Act 1987. The document must not be used for any purpose which may breach any copyright

This copied document to be made available for the sole purpose of enabling its consideration and review as part of a planning process under the Planning and Environment Act 1987. The document must not be used for any purpose which may breach any copyright



SEE SHEET 1

VIEW R2

