

# Imaged Document Cover Sheet

The document following this cover sheet is an imaged document supplied by LANDATA®, Victorian Land Registry Services.

|   |                         |
|---|-------------------------|
| Document Type                                   | <b>Plan</b>             |
| Document Identification                         | <b>LP061897</b>         |
| Number of Pages<br>(excluding this cover sheet) | <b>1</b>                |
| Document Assembled                              | <b>12/05/2021 09:42</b> |

**Copyright and disclaimer notice:**

© State of Victoria. This publication is copyright. No part may be reproduced by any process except in accordance with the provisions of the Copyright Act 1968 (Cth) and for the purposes of Section 32 of the Sale of Land Act 1962 or pursuant to a written agreement. The information is only valid at the time and in the form obtained from the LANDATA® System. None of the State of Victoria, LANDATA®, Victorian Land Registry Services Pty. Ltd. ABN 86 627 986 396 as trustee for the Victorian Land Registry Services Trust ABN 83 206 746 897 accept responsibility for any subsequent release, publication or reproduction of the information.

The document is invalid if this cover sheet is removed or altered.

**This copied document to be made available for the sole purpose of enabling its consideration and review as part of a planning process under the Planning and Environment Act 1987. The document must not be used for any purpose which may breach any copyright**

COLOUR CONVERSION  
BLUE = E-1  
BROWN = RI & E-2

PLAN OF SUBDIVISION OF  
PART OF CROWN ALLOTMENT C1 SECTION 12  
PARISH OF DANDENONG  
COUNTY OF BOURKE

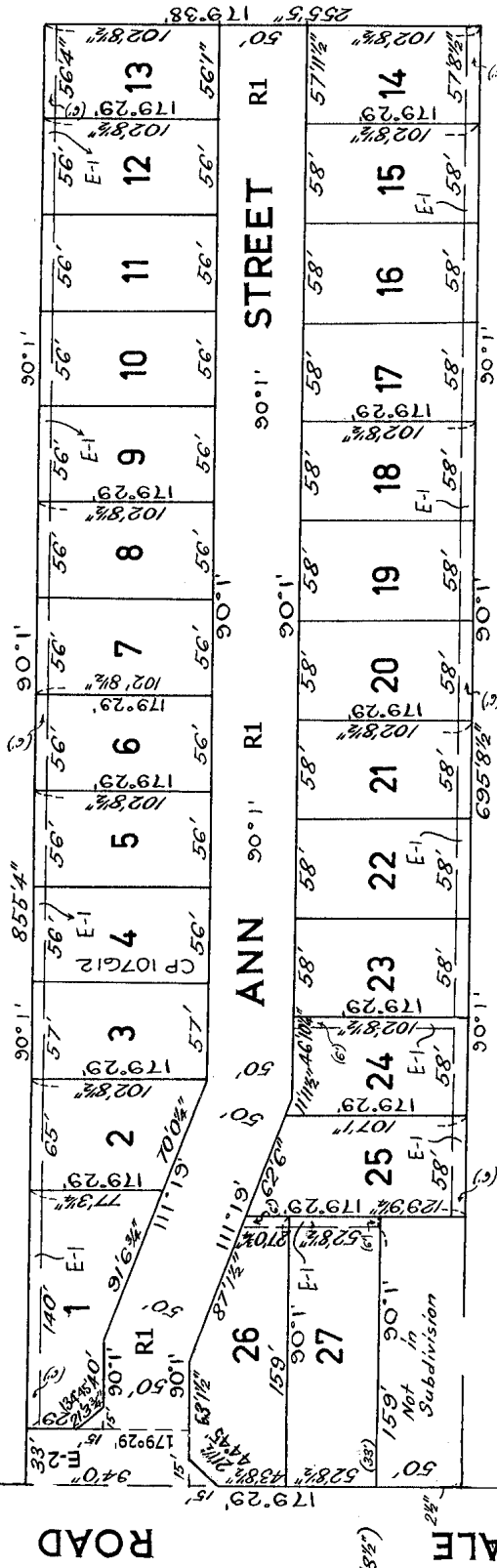
Vol. 74-89 Fol. 102 Vol. 76440 Fol. 026

DEPTH LIMITATION: 50 FEET

Measurements are in Feet & Inches

Conversion Factor

FEET X 0.3048 = METRES



APPROPRIATIONS

Land coloured Blue is set apart for a drainage  
& sewerage easement & is 6' wide.  
Brown: Way and Drainage  
Scale: - 80 feet to an inch.

Back Concrete Kerb  
5003  
Back Concrete Kerb  
Rail

BAILEY COURT

This copied document to be made available for the sole purpose of enabling its consideration and review as part of a planning process under the Planning and Environment Act 1987. The document must not be used for any purpose which may breach any copyright