

Appendix B

Concept Layout Plan and Elevations

**ADVERTISED
PLAN**

This copied document to be made available for the sole purpose of enabling its consideration and review as part of a planning process under the Planning and Environment Act 1987. The document must not be used for any purpose which may breach any copyright





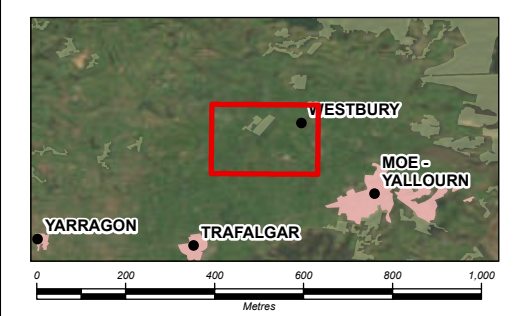
PS217303
Giddi BESS and Trafalgar East Hybrid Solar

Figure 1
Site Layout

Legend

- Watercourse
- Existing Gas Pipeline
- Transmission Corridor Option 1
- Transmission Corridor Option 2
- Giddi BESS
- Trafalgar East Hybrid Solar
- Existing 220kV Power Line Easement
- Cadastre

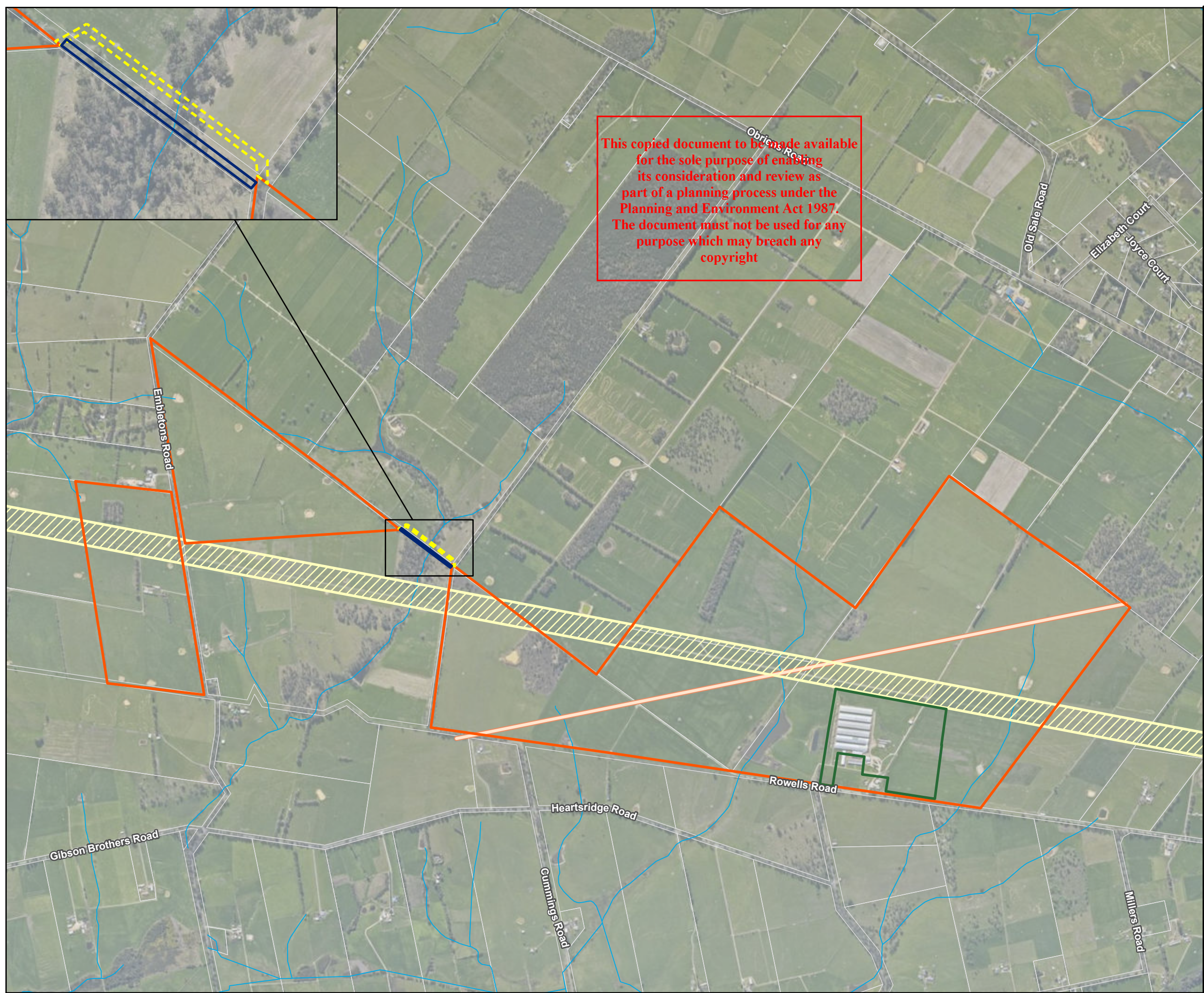
ADVERTISED PLAN



Coordinate system: GDA2020 MGA Zone 55
Scale ratio correct when printed at A3
1:17,000 Date: 26/11/2025

Data sources: DEWLP, MetroMap WMS Services; World Imagery: Earthstar Geographics
© WSP Australia Pty Ltd ("WSP") Copyright in the drawings, information and data recorded ("the information") is the property of WSP. This document and the information are solely for the use of the authorised recipient and this document may not be used, copied or reproduced in whole or part for any purpose other than that which it was supplied by WSP. WSP makes no representation, undertakes no duty and accepts no responsibility to any third party who may use or rely upon this document or the information. NCSI Certified Quality System to ISO 9001. © APPROVED FOR AND ON BEHALF OF WSP Australia Pty Ltd.

This copied document to be made available for the sole purpose of enabling its consideration and review as part of a planning process under the Planning and Environment Act 1987. The document must not be used for any purpose which may breach any copyright



ADVERTISED PLAN

This copied document to be made available for the sole purpose of enabling its consideration and review as part of a planning process under the Planning and Environment Act 1987. The document must not be used for any purpose which may breach any copyright

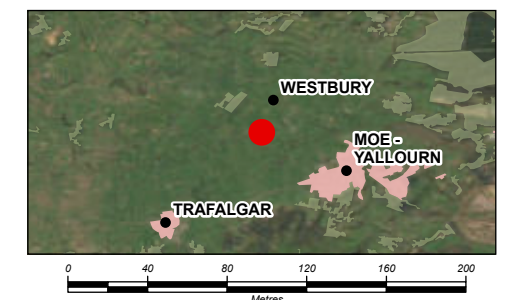


PS217303
Trafalgar East BESS and Solar

Figure 2
Giddi BESS Layout

Legend

- Fire Hydrants
- Watercourse
- Water Tanks
- PCS + Transformer
- Office Container
- Existing Buildings
- Access Road
- Main Access Gate
- Fire Break (10m)
- Giddi BESS Study Area
- TNSP Switchyard
- Giddi BESS Substation
- Existing 220kV Power Line Easement
- Giddi BESS Construction Laydown Area
- 60m Easement
- Giddi BESS



Coordinate system: GDA2020 MGA Zone 55
Scale ratio correct when printed at A3

1:3,800 Date: 16/03/2026

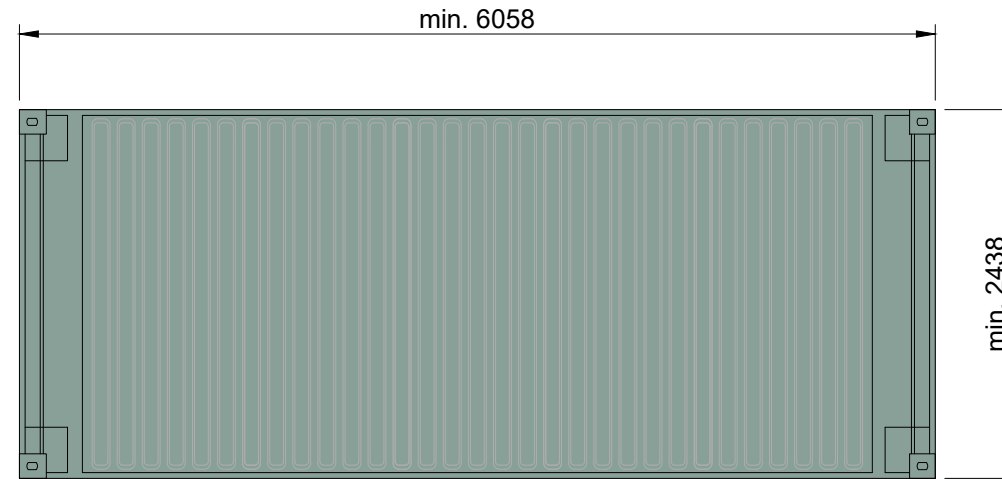
Data sources: DEWLP, World Imagery: Vantor
World Imagery: Earthstar Geographics

© WSP Australia Pty Ltd ("WSP") Copyright in the drawings, information and data recorded ("the information") is the property of WSP. This document and the information are solely for the use of the authorised recipient and this document may not be used, copied or reproduced in whole or part for any purpose other than that which it was supplied by WSP. WSP makes no representation, undertakes no duty and accepts no responsibility to any third party who may use or rely upon this document or the information. NCSI Certified Quality System to ISO 9001. © APPROVED FOR AND ON BEHALF OF WSP Australia Pty Ltd.

1 Top view of BESS container

M 1:50

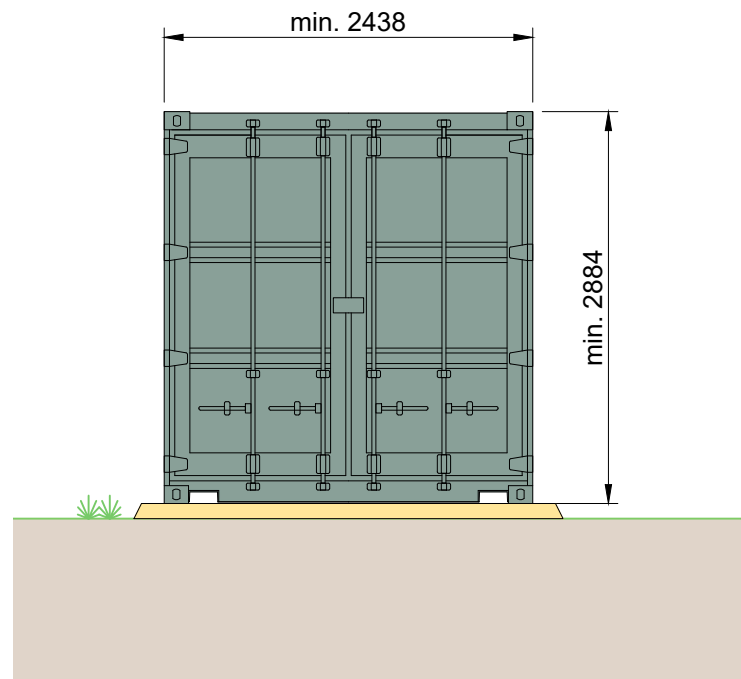
**ADVERTISED
PLAN**



This copied document to be made available for the sole purpose of enabling its consideration and review as part of a planning process under the Planning and Environment Act 1987. The document must not be used for any purpose which may breach any copyright

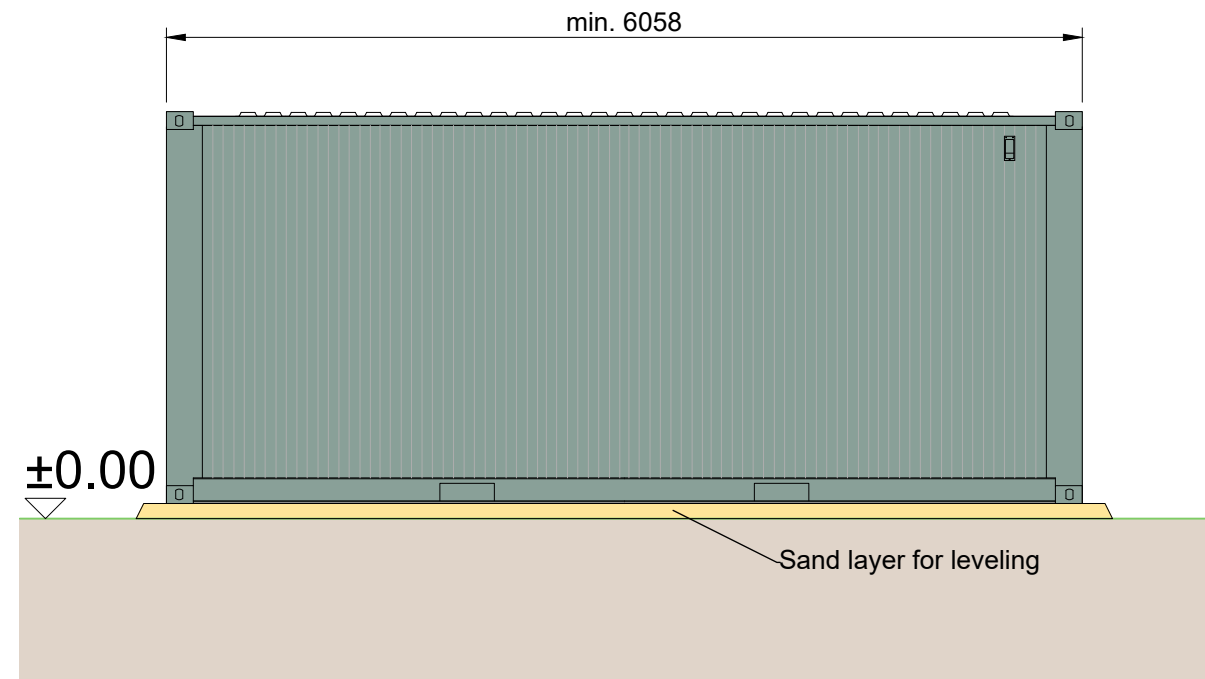
2 Front view

M 1:50



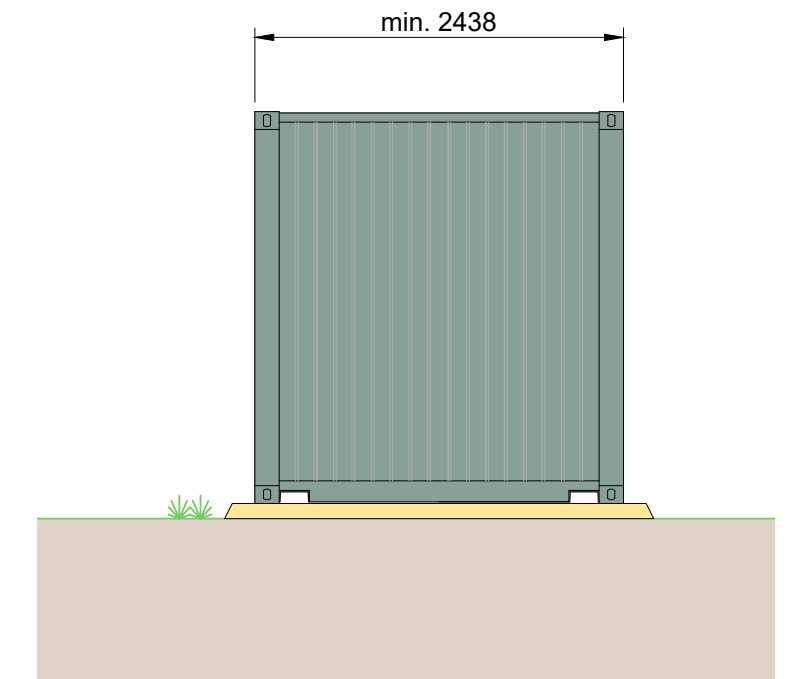
3 Side view

M 1:50



4 Back view

M 1:50



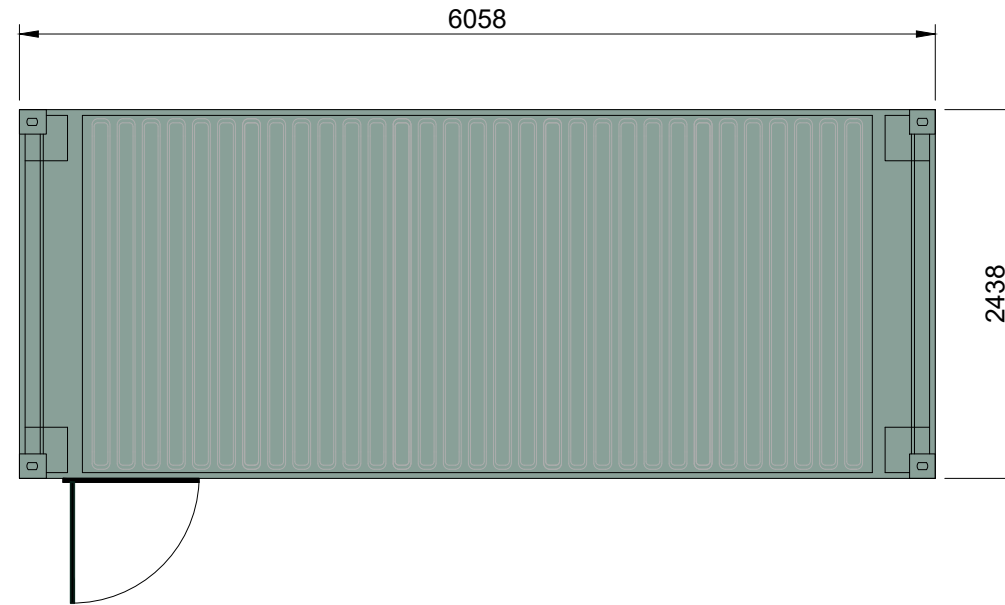
Note : all dimensions are in millimeters. Internal measurements to be confirmed by the final supplier. The external appearance will depend on the equipment manufacturer, and the exterior color of the equipment must align with the customer's specific requirements.

					Engineering Design: ib vogt GmbH Helmholtzstr. 2-9 10587 Berlin Tel. +49 30 397440-0 www.ib-vogt.com		Project: Planning Phase: Approval Design Size: A3_420x297 Drawing Scale: 1:50 Page: 001 / 001 Status: 20 Dec 2024	
					Supplier:		Title: BESS Container	
							Document-No.: AUS 0005.DEV.M4.022.3.0	
0	20 Dec 24	PFE	MAE		Original Drawing			
Revi.	Date	Desi.	Chec.	Appr.	Revision Description			

Copying of this document and distribution to others and the use or communication of the contents thereof are forbidden without expressed authority. Offenders are liable to the payment of damages © by ib vogt GmbH

1 Top view of O&M Office container

M 1:50

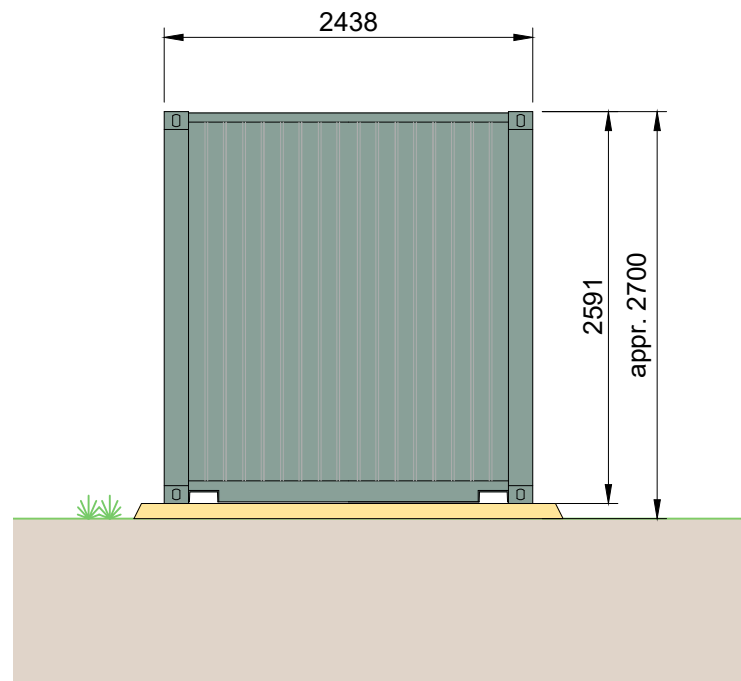


ADVERTISED PLAN

This copied document to be made available for the sole purpose of enabling its consideration and review as part of a planning process under the Planning and Environment Act 1987. The document must not be used for any purpose which may breach any copyright

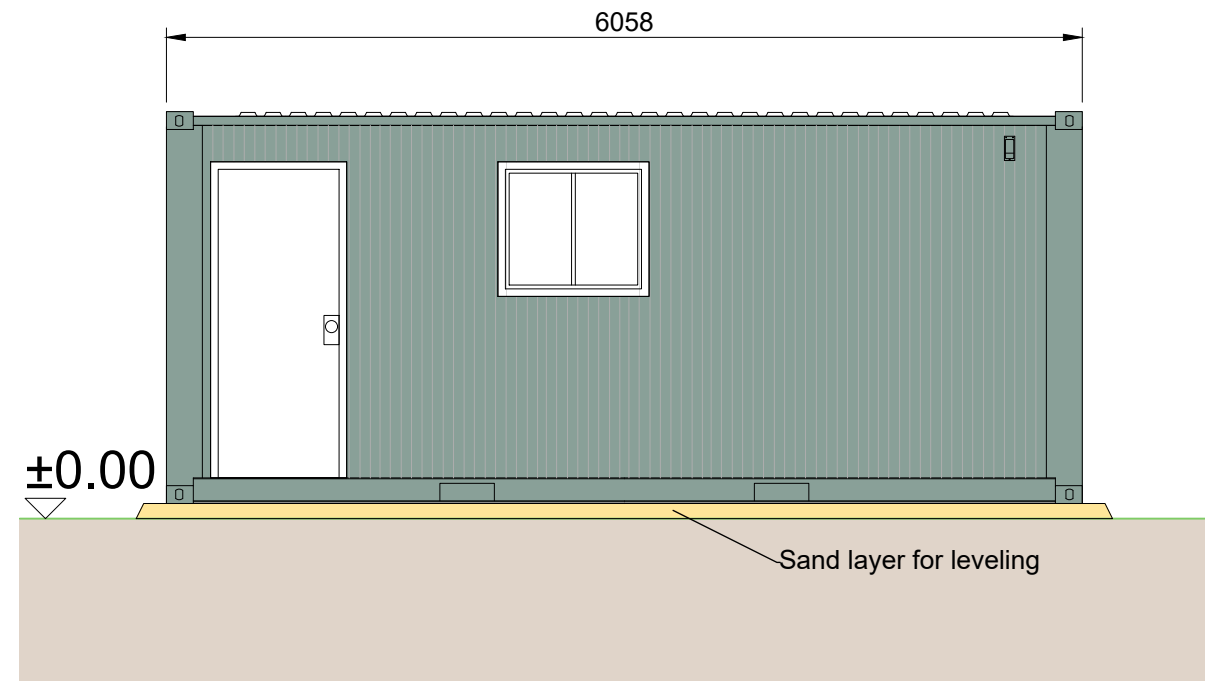
2 Front view

M 1:50



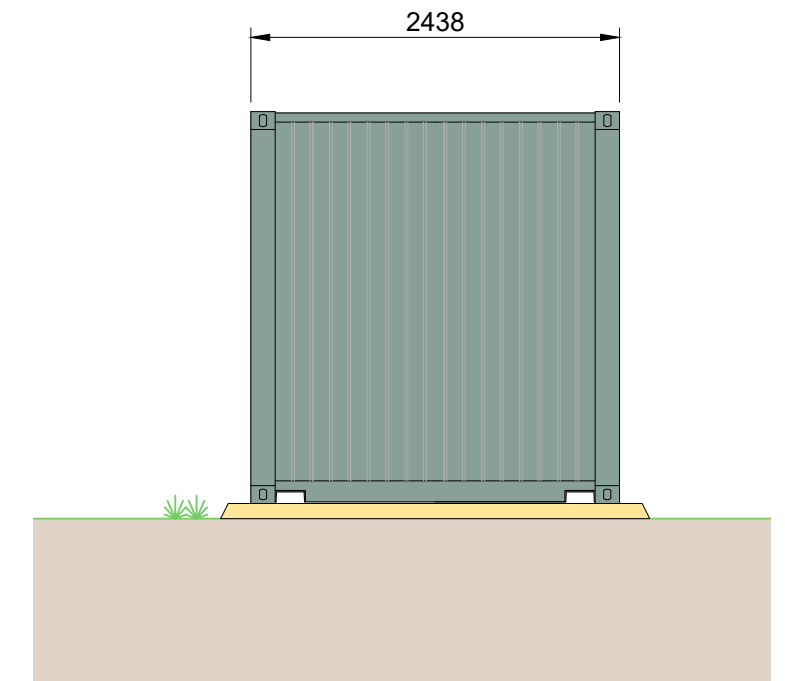
3 Side view

M 1:50



4 Back view

M 1:50



all dimensions in mm
colors to be determined by the customer

					Engineering Design: ib vogt GmbH Helmholtzstr. 2-9 10587 Berlin Tel. +49 30 397440-0 www.ib-vogt.com		Project: Planning Phase: Approval Design Size: A3_420x297 Drawing Scale: 1:50 Page: 001 / 001 Status: 18 Dec 2024	
					Supplier:		Title: O&M Office Container Standard ISO 20'	
0 18 Dec 24 PFE MAE Original drawing					Document-No.: AUS 0005. DEV. M4.040. 3.0		Country-Code Project-No. Category Description Serial-No. Size Revision	
Revi.	Date	Desi.	Chec.	Appr.	Revision Description			

Copying of this document and distribution to others and the use or communication of the contents thereof are forbidden without expressed authority. Offenders are liable to the payment of damages © by ib vogt GmbH

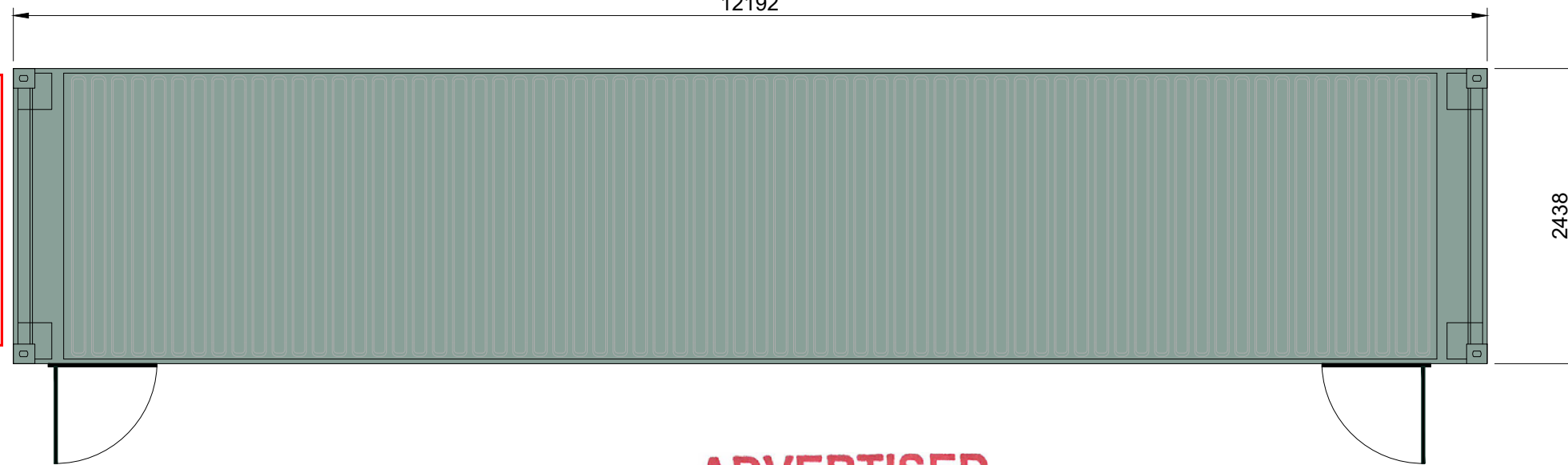
1 Top view of Control Room container

M 1:50

12192

2438

This copied document to be made available for the sole purpose of enabling its consideration and review as part of a planning process under the Planning and Environment Act 1987. The document must not be used for any purpose which may breach any copyright



ADVERTISED PLAN

2 Front view

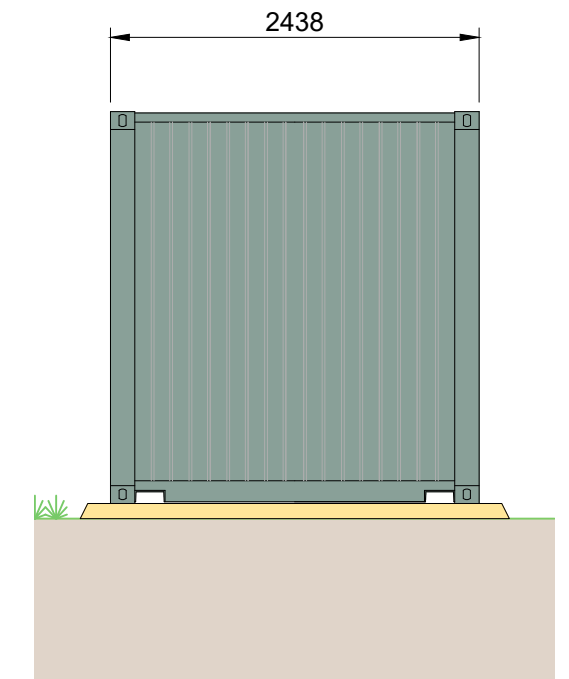
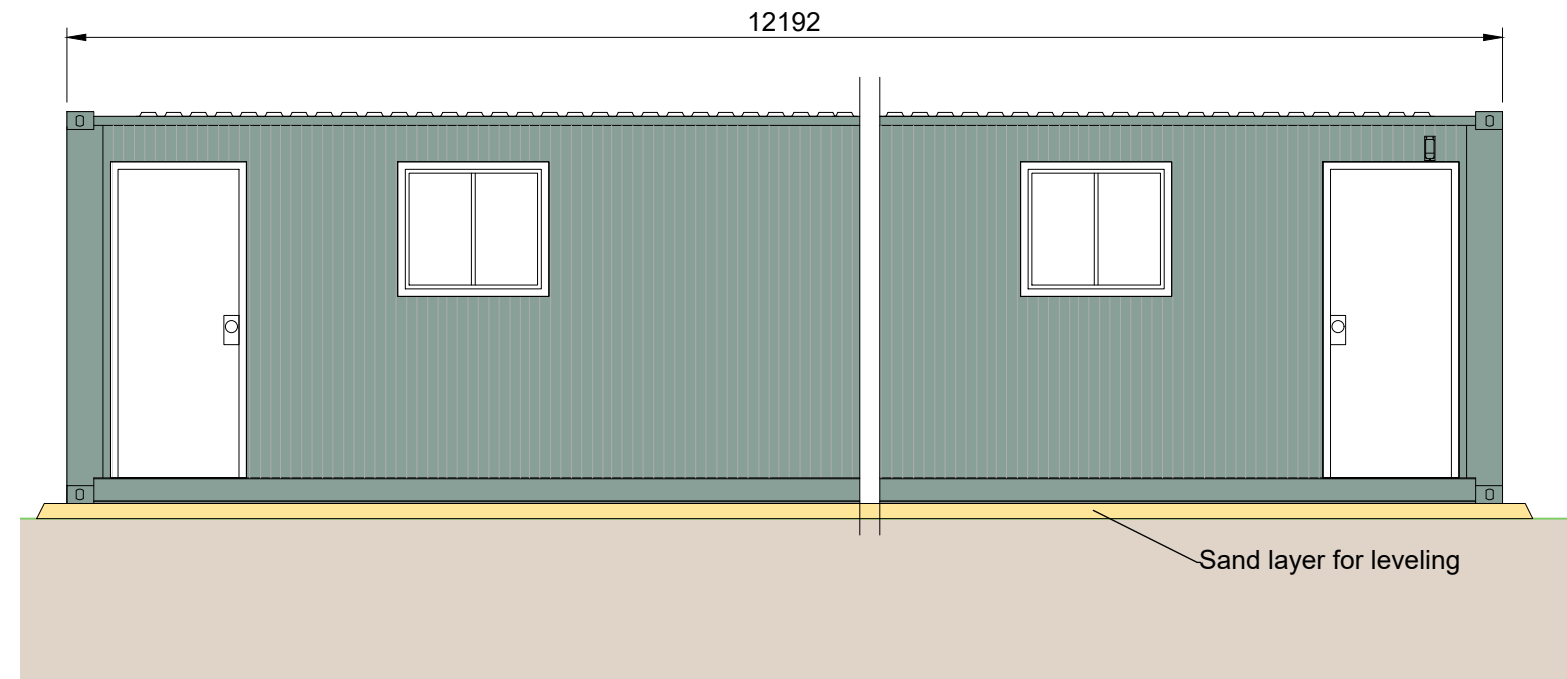
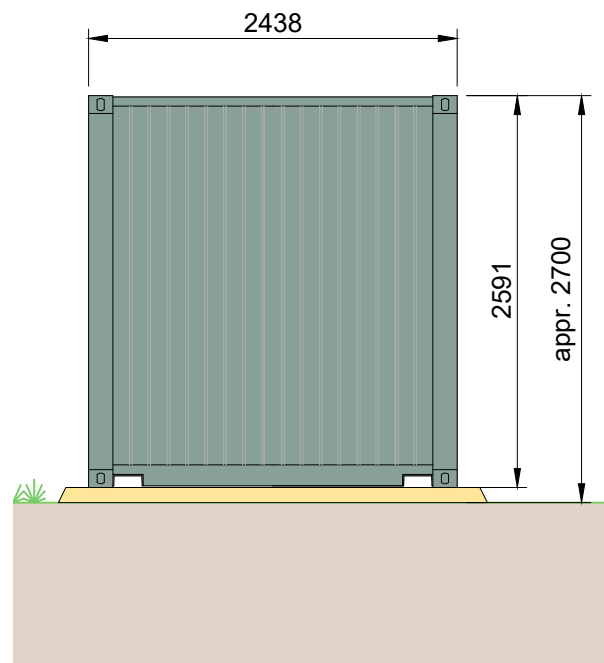
M 1:50

3 Side view

M 1:50

4 Back view

M 1:50



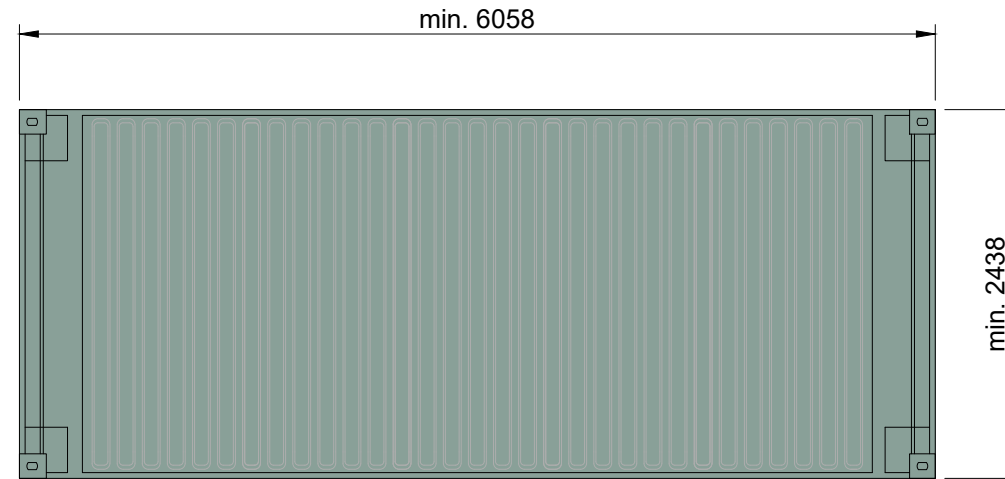
all dimensions in mm
colors to be determined by the customer

					Engineering Design: ib vogt GmbH Helmholtzstr. 2-9 10587 Berlin Tel. +49 30 397440-0 www.ib-vogt.com		Project: Planning Phase: Approval Design Size: A3_420x297 Drawing Scale: 1:50 Page: 001 / 001 Status: 18 Dec 2024	
					Supplier:		Title: Control Room Container Standard ISO 40'	
0 18 Dec 24 PFE MAE Original drawing					Document-No.: AUS 0005.DEV.M4.041.3.0		<small>Country-Code Project-No. Category Description Serial-No. Size Revision</small>	
Revi.	Date	Desi.	Chec.	Appr.	Revision Description		Copying of this document and distribution to others and the use or communication of the contents thereof are forbidden without expressed authority. Offenders are liable to the payment of damages © by ib vogt GmbH	

1 Top view of spare part container

M 1:50

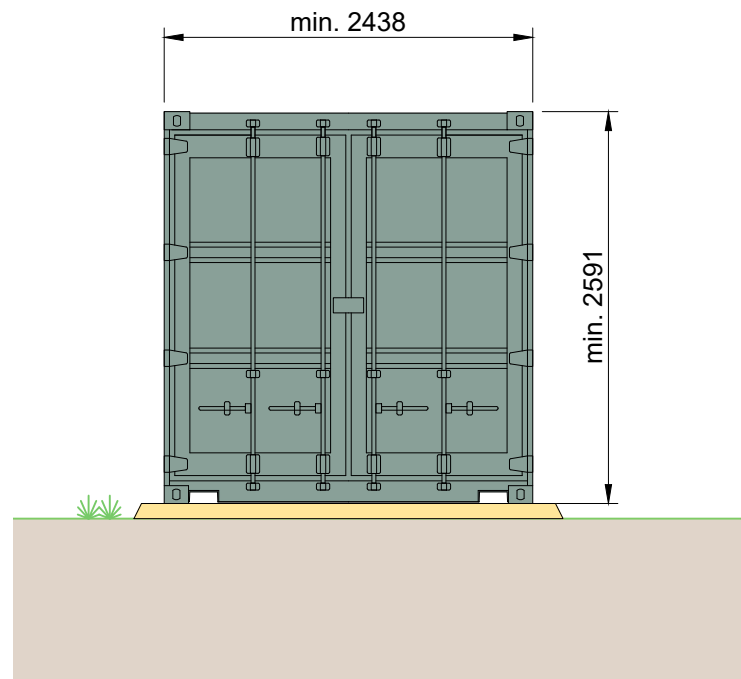
**ADVERTISED
PLAN**



This copied document to be made available for the sole purpose of enabling its consideration and review as part of a planning process under the Planning and Environment Act 1987. The document must not be used for any purpose which may breach any copyright

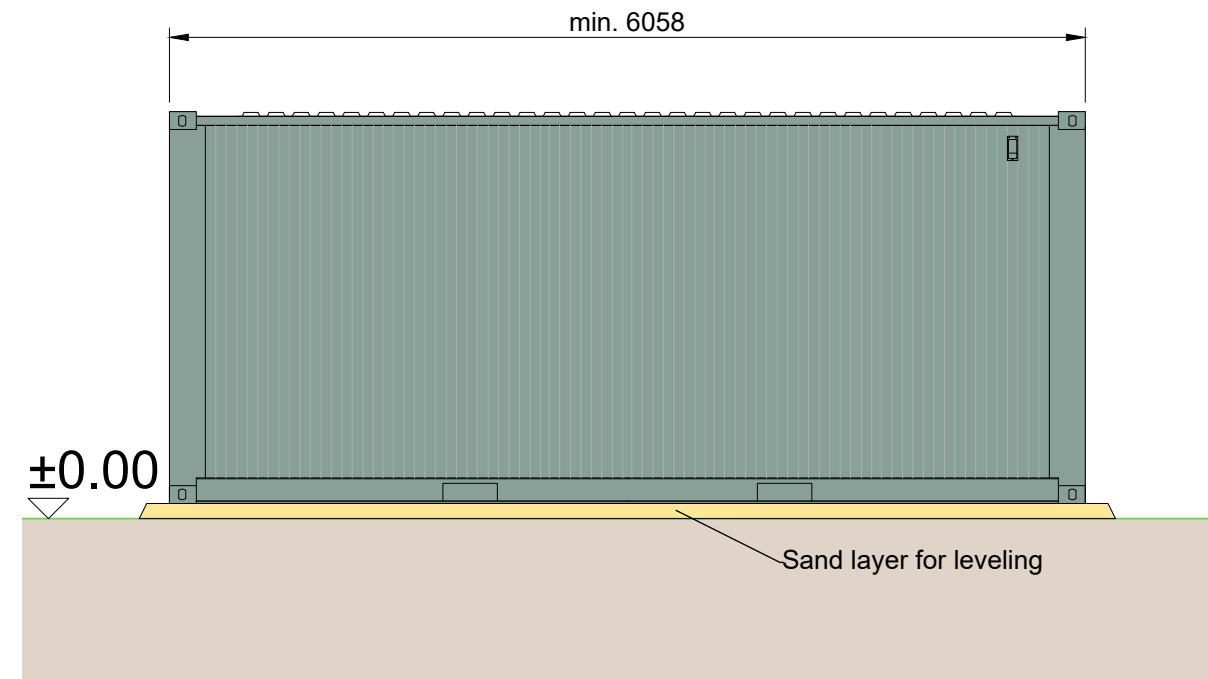
2 Front view

M 1:50



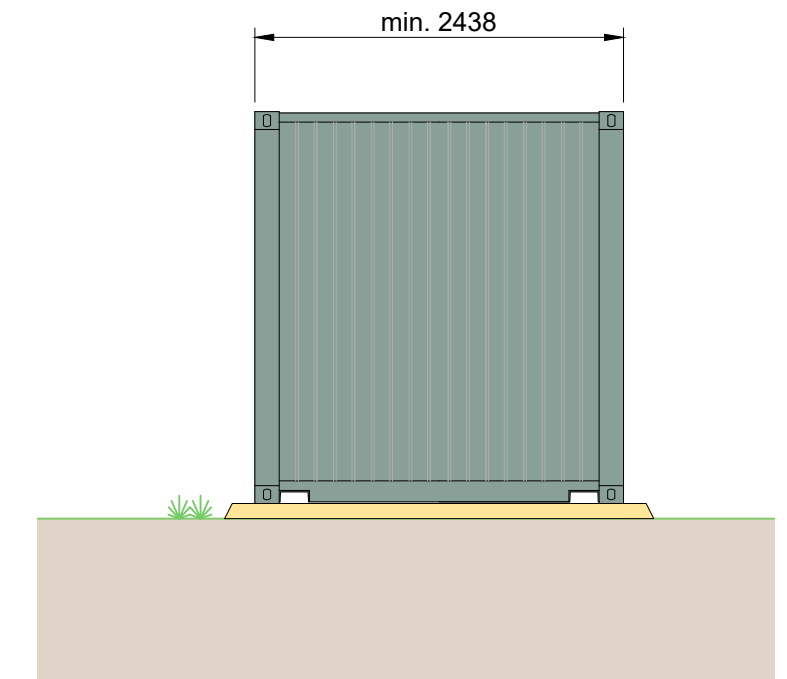
3 Side view

M 1:50



4 Back view

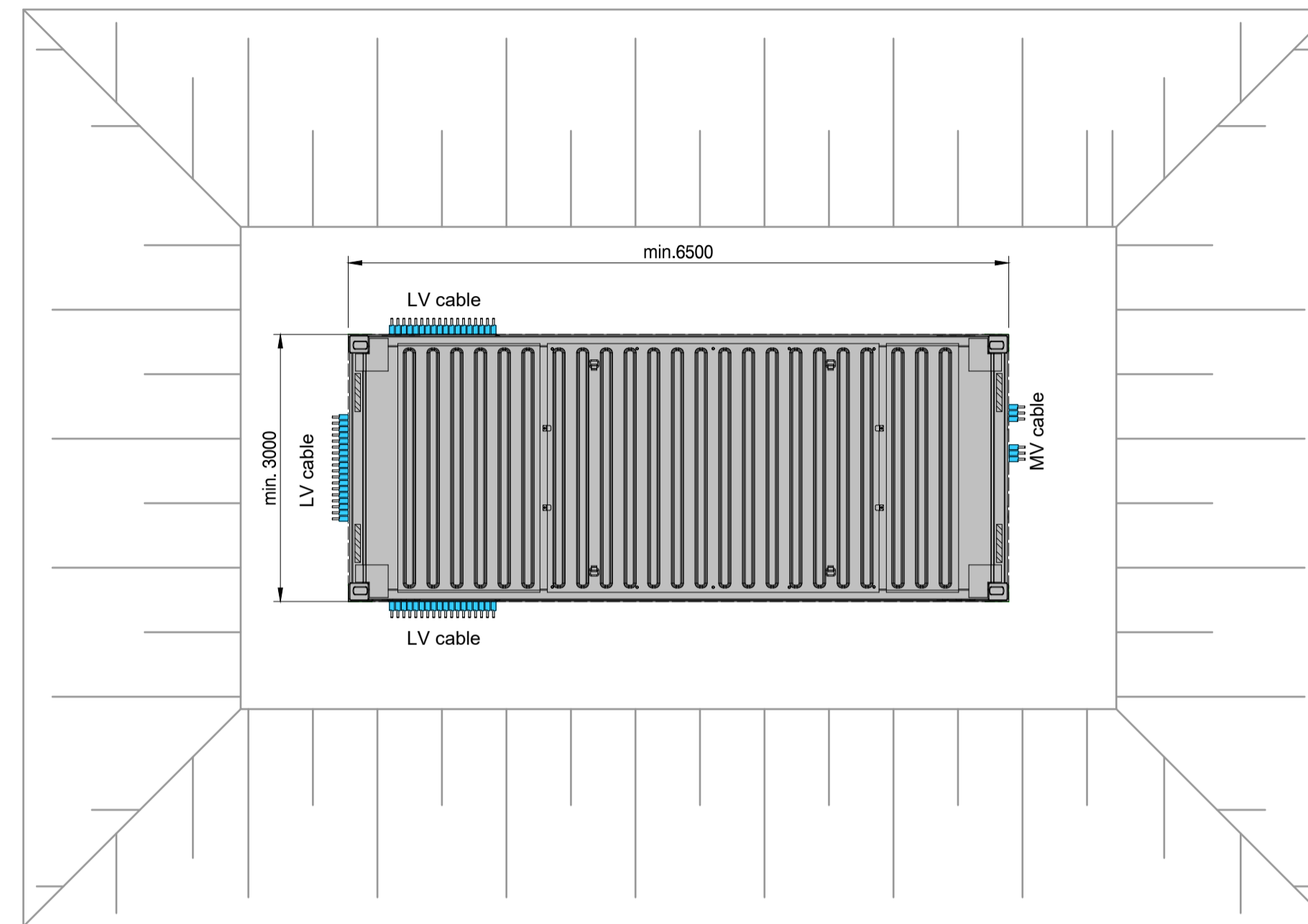
M 1:50



all dimensions in mm
colors to be determined by the customer

					Engineering Design: ib vogt GmbH Helmholtzstr. 2-9 10587 Berlin Tel. +49 30 397440-0 www.ib-vogt.com		Project: Planning Phase: Approval Design Size: A3_420x297 Drawing Scale: 1:50 Page: 001 / 001 Status: 20 Dec 2024	
					Supplier:		Title: Spare Parts Container	
							Document-No.: AUS 0005. DEV. M4.039. 3.0	
0	20 Dec 24	PFE	MAE		Original drawing			
Revi.	Date	Desi.	Chec.	Appr.	Revision Description			
					Copying of this document and distribution to others and the use or communication of the contents thereof are forbidden without expressed authority. Offenders are liable to the payment of damages © by ib vogt GmbH			

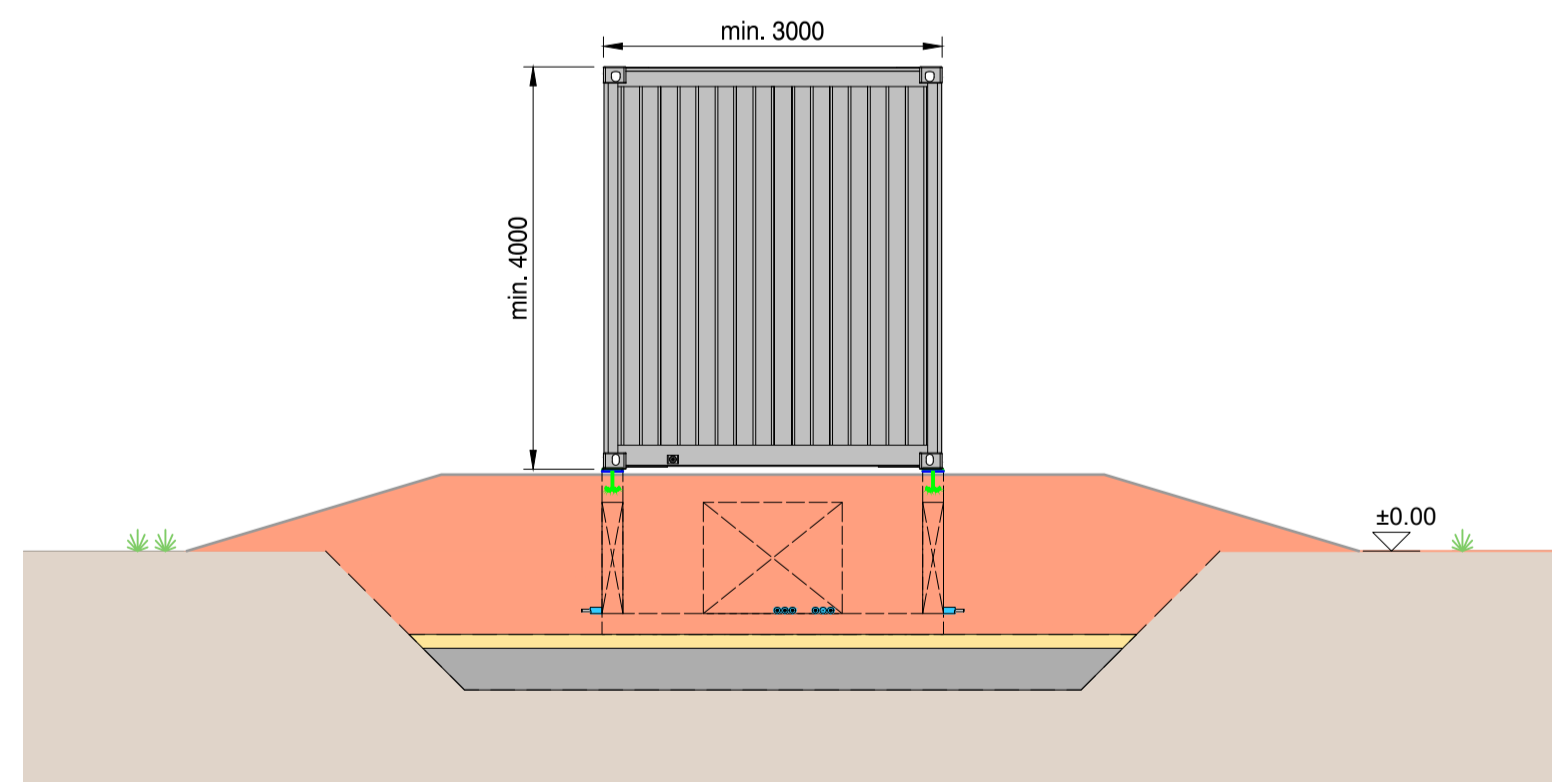
1 Top view of MV Skid container
M 1:50



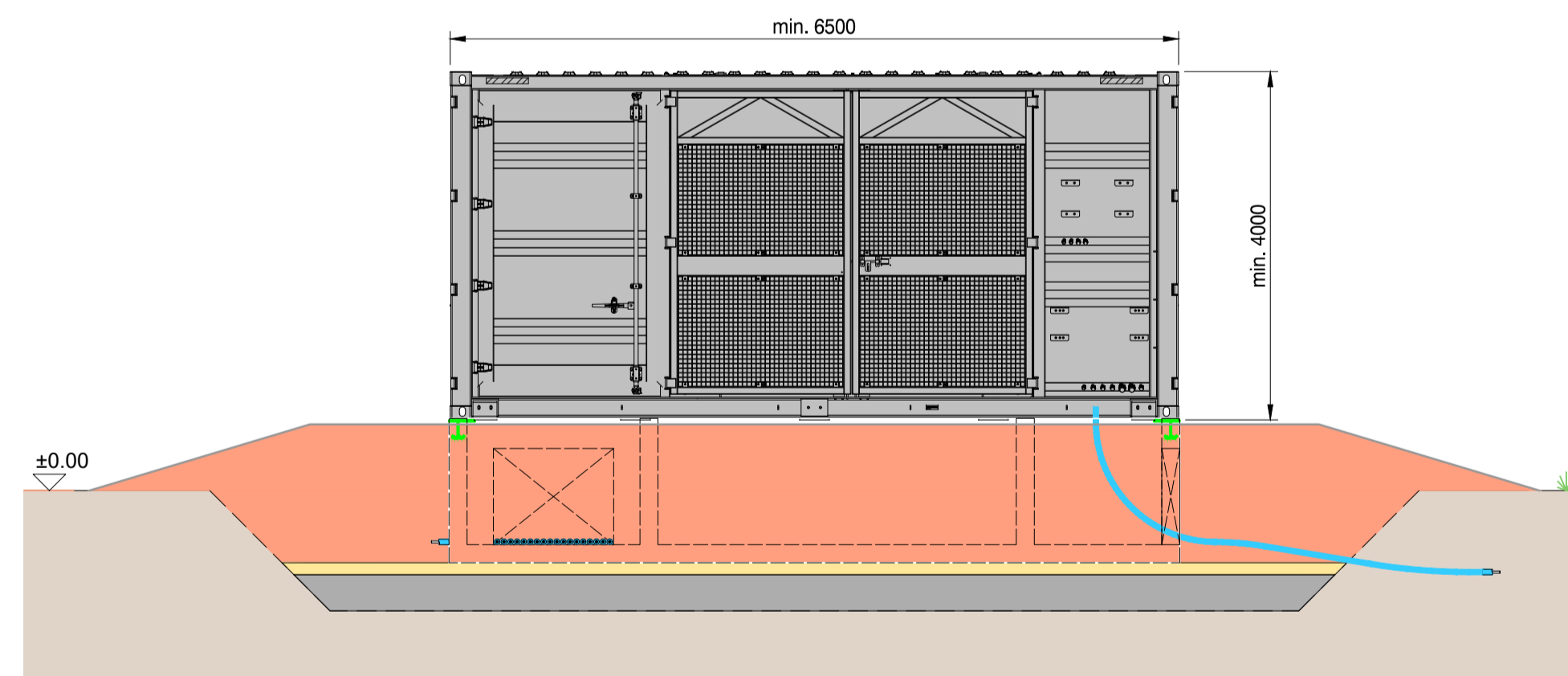
**ADVERTISED
PLAN**

This copied document to be made available for the sole purpose of enabling its consideration and review as part of a planning process under the Planning and Environment Act 1987. The document must not be used for any purpose which may breach any copyright

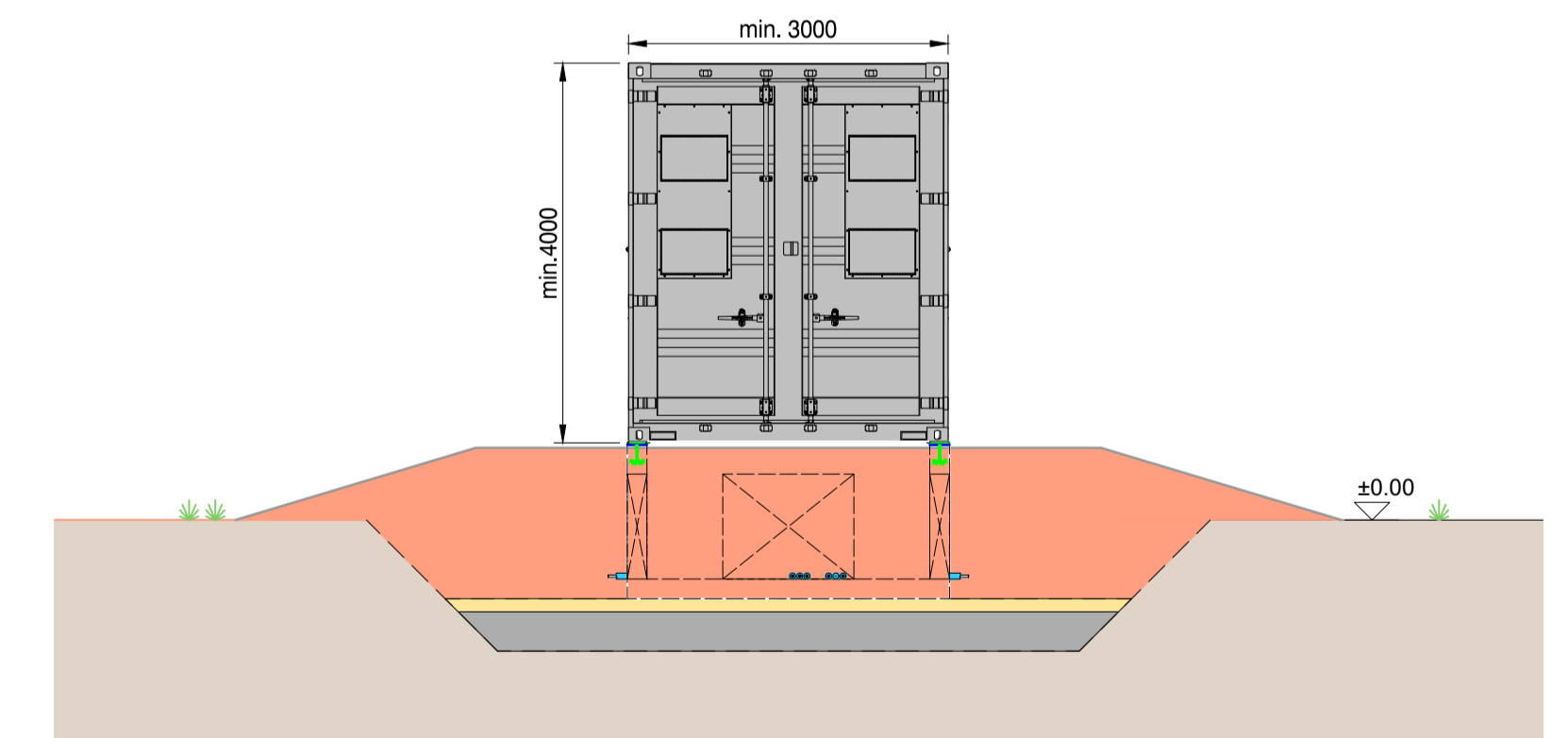
2 Front view
M 1:50



3 Side view
M 1:50



4 Back view
M 1:50

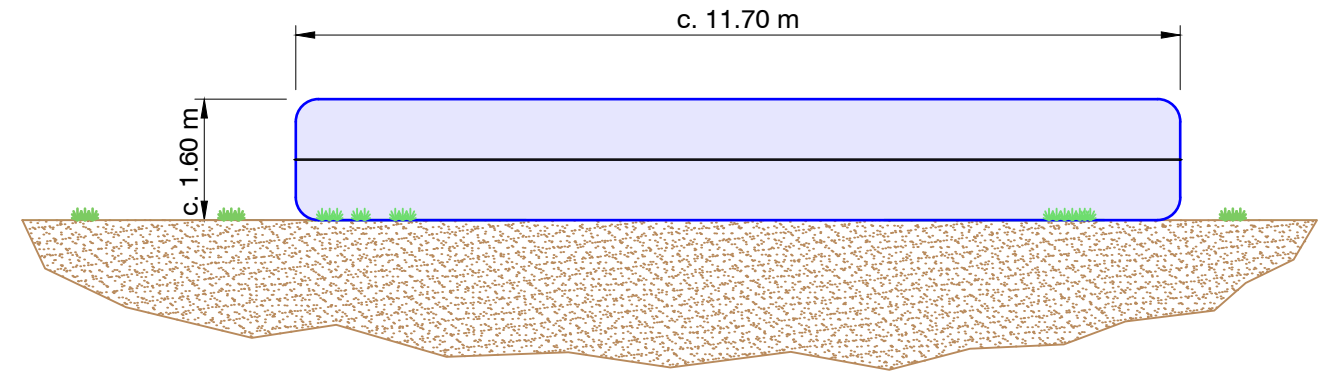
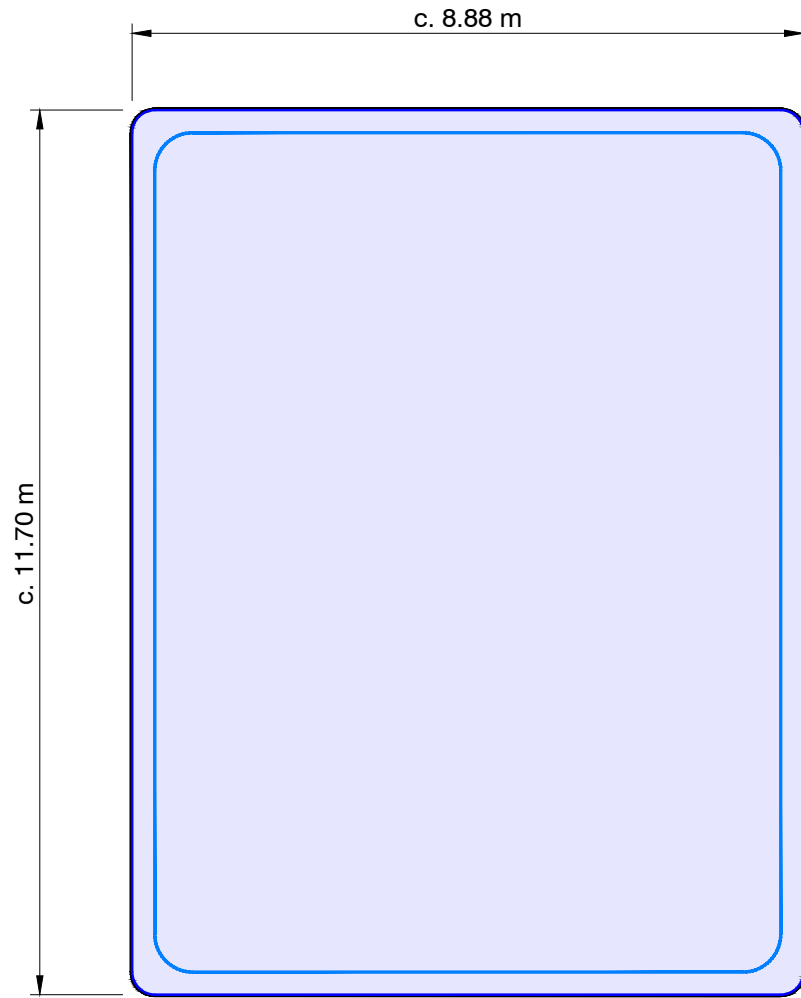


Note : all dimensions are in millimeters. Internal measurements to be confirmed by the final supplier. The access to the PCS is defined according to the final supplier specifications. The external appearance will depend on the equipment manufacturer, and the exterior color of the equipment must align with the customer's specific requirements. Additionally, the foundation's structural design will be based on the final design and the results of the geotechnical study.

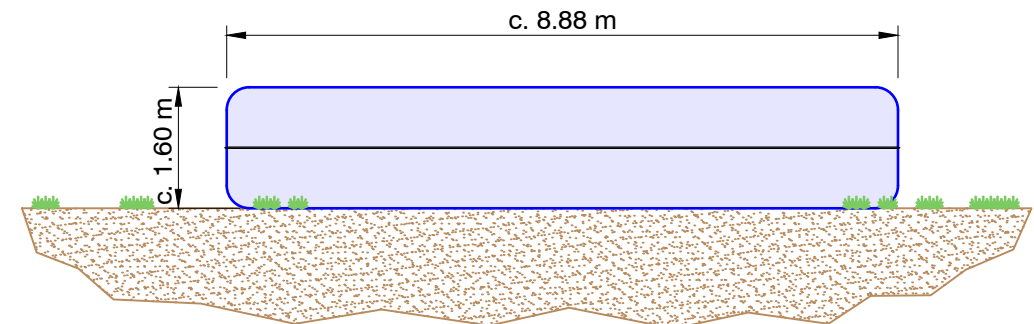
				Engineering Design: ib vogt GmbH Helmholtzstr. 2-9 10587 Berlin Tel. +49 30 397440-0 www.ib-vogt.com		Project: Planning Phase: Approval Design	
				Supplier:		Size: A1_841x594 Drawing Scale: 1:50	
						Page: 001 / 001 Status: 18 Dec 2024	
						Title: MV Skid Container	
						Document-No.: AUS 0005_DEV.M4.027.1.0	
0	18 Dec 24	PFE	MAE	Original Drawing			
Revi.	Date	Desi.	Chec.	Appr.	Revision Description	Copying of this document and distribution to others and the use or communication of the contents thereof are forbidden without expressed authority. Offenders are liable to the payment of damages © by ib vogt GmbH	

ADVERTISED PLAN

1 Water tank top view
M 1:100



3 Water tank front view
M 1:100



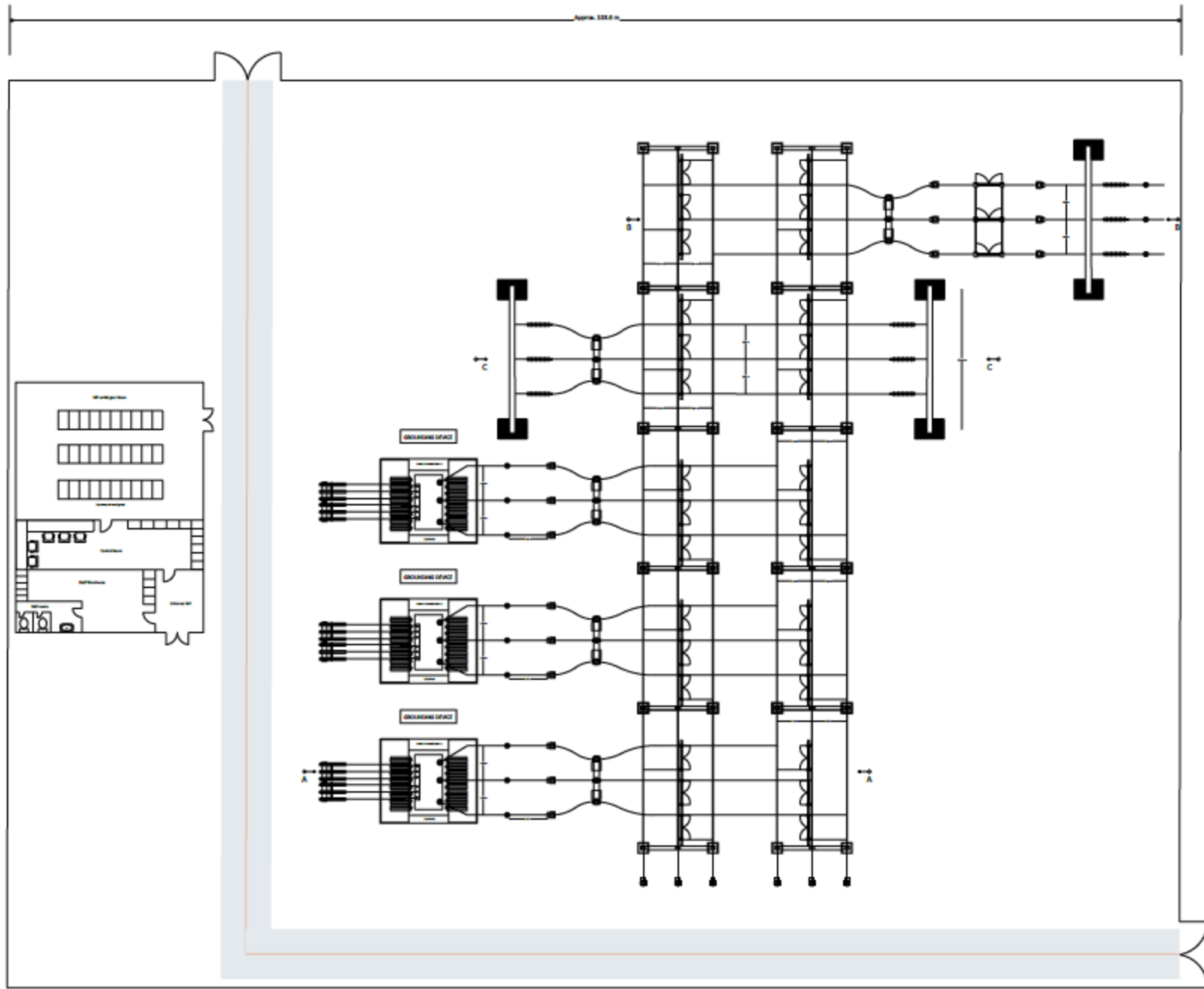
This copied document to be made available for the sole purpose of enabling its consideration and review as part of a planning process under the Planning and Environment Act 1987. The document must not be used for any purpose which may breach any copyright

Note:
Exemplary drawings only.
Dimensions are based on specifications provided.
Vendor design may vary

					Engineering Design: ib vogt GmbH Helmholtzstr. 2-9 10587 Berlin Tel. +49 30 397440-0 www.ib-vogt.com		Project: Planning Phase: Approval Design Size: A3_420x297 Page: 001 / 001 Drawing Scale: 1:100 Status: 11 Sep 2023	
					Supplier:		Title: Water Tank	
0	18 Dec 24	PFE	MAE		Original Design		Document-No.: AUS 0005. DEV. M4.018. 3.0 <small>Country-Code Project-No. Category Description Serial-No. Size Revision</small>	
Revi.	Date	Desi.	Chec.	Appr.	Revision Description		Copying of this document and distribution to others and the use or communication of the contents thereof are forbidden without expressed authority. Offenders are liable to the payment of damages © by ib vogt GmbH	

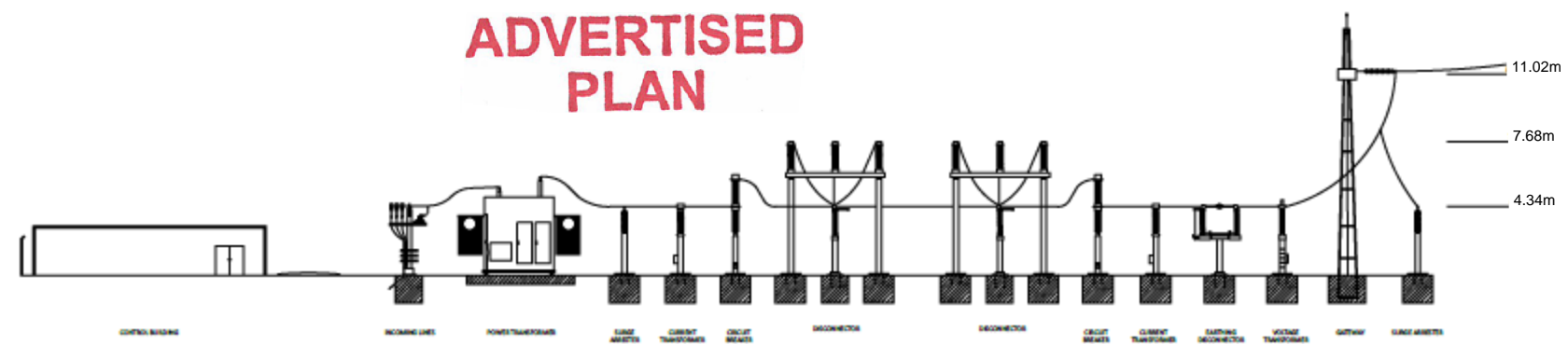


Approx. 91.02 m



This copied document to be made available for the sole purpose of enabling its consideration and review as part of a planning process under the Planning and Environment Act 1987. The document must not be used for any purpose which may breach any copyright

ADVERTISED PLAN



CHARACTERISTICS OF THE SUBSTATION
 Arrangement: Double busbar
 High voltage: 220.0 kV
 Medium voltage: 33.0 kV
 Substation Capacity: 787.6 MVA
 Number of transformer bays: 3
 Number of outgoing bays: 1

SAFETY DISTANCES
 - Between phases: 3.84 m
 - Bay width: 15.36 m
 - Between electrical devices: 3.84 m

SAFETY HEIGHTS
 - Device height: 4.34 m
 - Busbar height: 7.68 m
 - Gateway height: 11.02 m

Legend

	Surge Arrester
	Current Transformer
	Circuit Breaker
	Voltage Transformer
	Disconnecter

ID	FIRST VERSION	BY	2023-08-10
REV	DESCRIPTION	BY	DATE

FOR INFORMATION ONLY



PROJECT: Trafalgar

DRAWING: Double Bus Bar Substation Layout

SCALE: Not to scale	SHEET: 1 / 2
REVISION:	DATE: