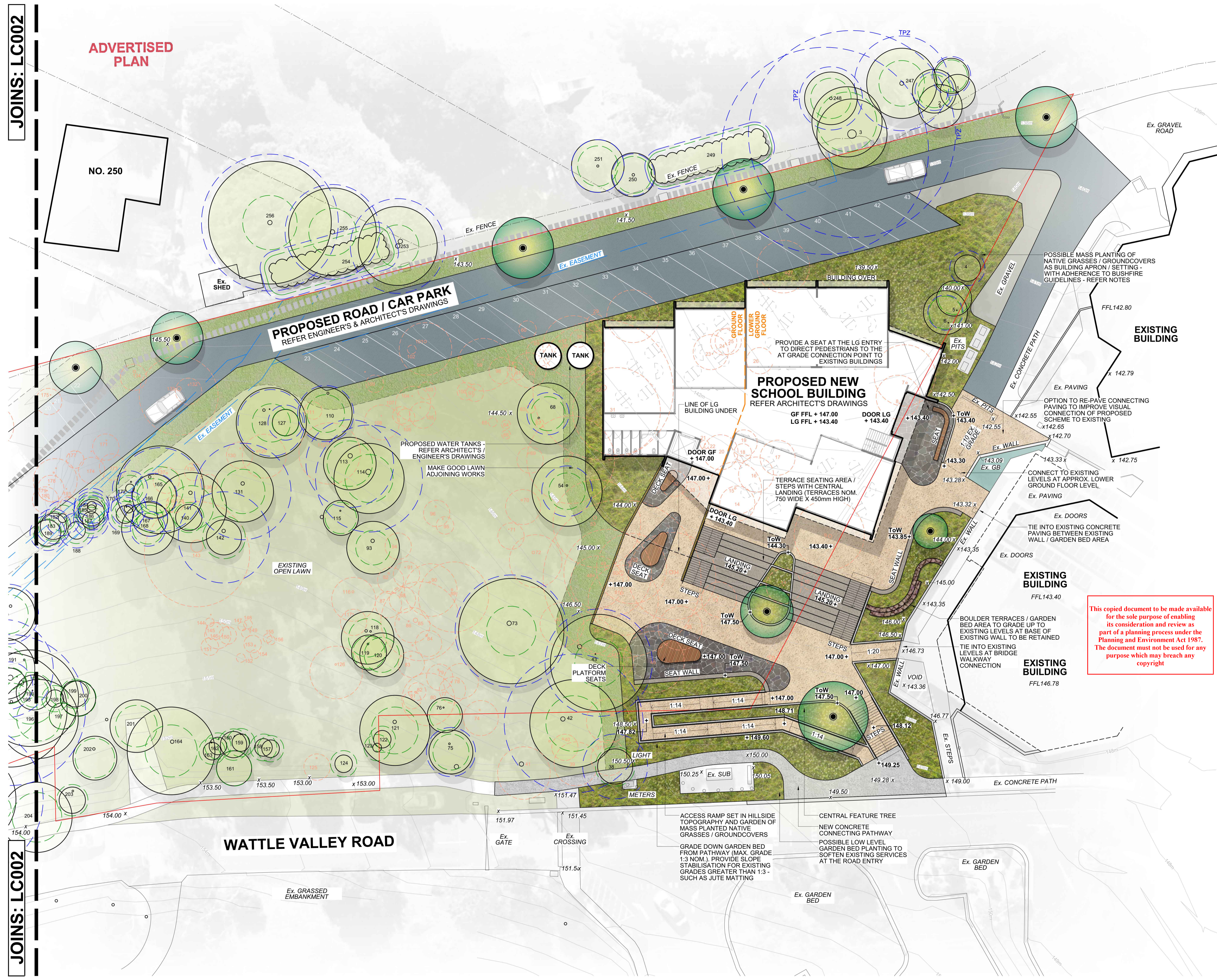


JOINS: LC002

JOINS: LC002

ADVERTISED PLAN



REVISIONS

REVISION:	DATE:	DESCRIPTION:
P	17/05/24	DRAFT
-	21/05/24	FOR APPROVAL
A	24/05/24	FOR APPROVAL
B	04/06/24	FOR APPROVAL
C	11/06/24	FOR APPROVAL
D	18/06/24	FOR APPROVAL
F	26/07/24	FOR APPROVAL

NOT FOR CONSTRUCTION
TO BE READ IN CONJUNCTION WITH ARCHITECT'S / ENGINEER'S DRAWINGS AND SPECIFICATIONS, SITE SURVEY AND ARBORIST'S INFORMATION

DIAL BEFORE YOU DIG
www.1100.com.au

LEGEND

- TITLE BOUNDARY**
Refer Site Survey
- EXISTING TREE - RETAIN**
Refer Arborist's Report
- PROPOSED TREES**
To future detail
- EXISTING TREE - REMOVE**
Refer Arborist's Report
- EXISTING TREE - SRZ**
Refer Arborist's Report
- EXISTING TREE - TPZ**
Refer Arborist's Report
- MULCHED GARDEN BEDS**
With native planting of grasses / groundcovers - to future detail
- LAWN AREAS**
Make adjoining works good and tie in with existing lawn areas
- CONCRETE PAVING - MAIN PLAZA**
Such as exposed aggregate concrete
- FEATURE PAVING**
Such as: local stone crazy paving
- CONCRETE PAVING - PATHWAYS**
Such as brushed concrete
- DECK PLATFORM SEATING**
Such as composite decking / steel frame
- BOULDER TERRACES**
Such as mudstone terraces nom. 0.5m high
- TERRACE / SEAT WALLS**
Such as in situ coloured concrete walls
- RETAINING WALLS**
Such as rendered reinforced block walls
- STEPS**
Concrete steps to match paving, including handrails, tactile indicators, etc.
- FEATURE SEAT**
Such as curved modular timber benches
- SAFETY BALUSTRADE**
Such as timber batten / steel rail
- PROPOSED SPOT LEVELS / TOP OF WALL LEVELS (ToW)**
Indicative - Refer Architect's & Engineer's drawings
- EXISTING SPOT LEVELS - RETAIN**
Refer Site Survey
- EXISTING 500mm CONTOURS**
Refer Site Survey
- LINE OF EXISTING INFRASTRUCTURE BELOW**
Refer Site Survey
- LINE OF EASEMENT**
Refer Site Survey
- ROAD / CAR PARK**
Refer Engineer's / Architect's Drawings

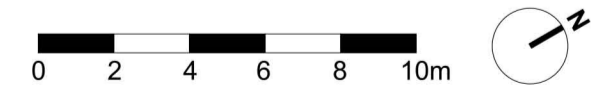
EXISTING TREES NOTE
REFER TO TREE PLAN AND ARBORIST'S REPORT FOR ADDITIONAL EXISTING TREE INFORMATION.

CLIENT:
BELGRAVE HEIGHTS CHRISTIAN SCHOOL
c/o SMITH + TRACEY ARCHITECTS

PROJECT:
BELGRAVE HEIGHTS CHRISTIAN SCHOOL PERFORMING ARTS/SENIOR SCHOOL
20 WATTLE VALLEY ROAD, BELGRAVE HEIGHTS

TITLE:
LANDSCAPE CONCEPT PLAN

DRAWING NUMBER:
LC001
1:200 at A1
1:400 at A3



RDLA
LANDSCAPE ARCHITECT
RDLA PTY LTD
INFO@RDLA.COM.AU

INDICATIVE PROPOSED PLANT SCHEME

BOTANICAL NAME	COMMON NAME	MATURE HEIGHT (m)	SPREAD (m)
TREES			
<i>Acacia implexa</i>	Lightwood	8-12m	4-7m
<i>Acacia melanoxylon</i>	Blackwood	10-18m	6-8m
<i>Allocasuarina verticillata</i>	Drooping She-Oak	5-10m	4-6m
<i>Banksia marginata</i>	Silver Banksia	2-4m	2-4m
<i>Callistemon 'Kings Park Special'</i>	King's Park Special Bottlebrush	3-4m	2-3m
<i>Eucalyptus gregsoniana</i>	Dwarf Snow Gum	5m	3m
<i>Eucalyptus leucoxylon 'Euky Dwarf'</i>	Euky Dwarf Yellow Gum	5-6m	3-5m
<i>Eucalyptus leucoxylon 'Rosea'</i>	Red Flowering Yellow Gum	12-15m	7m
<i>Tristanopsis laurina 'Luscious'</i>	Luscious Water Gum	6-8m	3-4m
GRASSES/GROUND COVERS			
<i>Anigozanthos 'Bush Ranger'</i>	Kangaroo Paw	0.6m	0.5m
<i>Banksia blechnifolia</i>	Groundcover Banksia	0.5m	1-2m
<i>Banksia spinulosa 'Birthday Candles'</i>	Dwarf Hairpin Banksia	0.3-0.5m	1-2m
<i>Carpobrotus modestus</i>	Inland Pigface	0.2m	0.3-0.6m
<i>Casuarina glauca 'Cousin It'</i>	Groundcover Casuarina	0.15-0.3m	0.6-1m
<i>Chrysocephalum semipapposum</i>	Clustered Everlasting	0.1-0.3m	0.5-1m
<i>Correa reflexa x pulchella 'Dusky Bells'</i>	Dusky Bells Correa	0.6-1m	1-2m
<i>Correa reflexa var. nummularifolia</i>	Roundleaf Correa	0.2-0.4m	0.5-1m
<i>Dianella revoluta</i>	Blue Flax Lily	0.8-1m	0.5-0.75m
<i>Dianella tasmanica</i>	Flax Lily	0.6-1m	0.6-1m
<i>Dianella tasmanica 'Tasred'</i>	Tasred Flax Lily	0.5m	0.5m
<i>Eremophila glabra 'Kalbarri Carpet'</i>	Kalbarri Carpet Emu Bush	0.3m	2m spreading
<i>Ficinia nodosa</i>	Knobby Club Rush	0.5-1m	0.5-1m
<i>Grevillea 'Bronze Rambler'</i>	Bronze Rambler Grevillea	0.3-0.5m	2m spreading
<i>Grevillea gaudichaudii</i>	Spider Flower	0.3m	2-4m spreading
<i>Hardenbergia violacea 'Meema'</i>	Meema Purple Coral Pea	0.5m	1-2m
<i>Lomandra longifolia</i>	Mat Rush	1-1.5m	1-1.5m
<i>Lomandra longifolia 'Tanika'</i>	Tanika Mat Rush	0.5-1m	0.5-1m
<i>Myoporum parvifolium 'Yareena'</i>	Yareena Creeping Boobialla	0.2m	0.5-1m
<i>Poa labillardierei</i>	Common Tussock Grass	0.3-1m	0.5-1m
<i>Poa labillardierei 'Eskdale'</i>	Eskdale Tussock Grass	0.6m	0.6m
<i>Poa morrisii</i>	Velvet Tussock Grass	0.3-0.6m	0.3-0.6m
<i>Rhagodia spinescens 'Aussie Flat Bush'</i>	Aussie Flat Bush Creeping Saltbush	0.3-0.5m	1m
<i>Rhagodia spinescens 'Silver Border'</i>	Silver Border Berry Saltbush	0.6-1m	1-2m
<i>Themeda triandra</i>	Kangaroo Grass	0.3-0.6m	0.3-0.6m
<i>Westringia fruticosa 'Flat 'n Fruity'</i>	Flat 'n Fruity Coast Rosemary	0.3m	1-1.5m
<i>Westringia fruticosa 'Mundi'</i>	Mundi Coast Rosemary	0.5m	1-1.5m

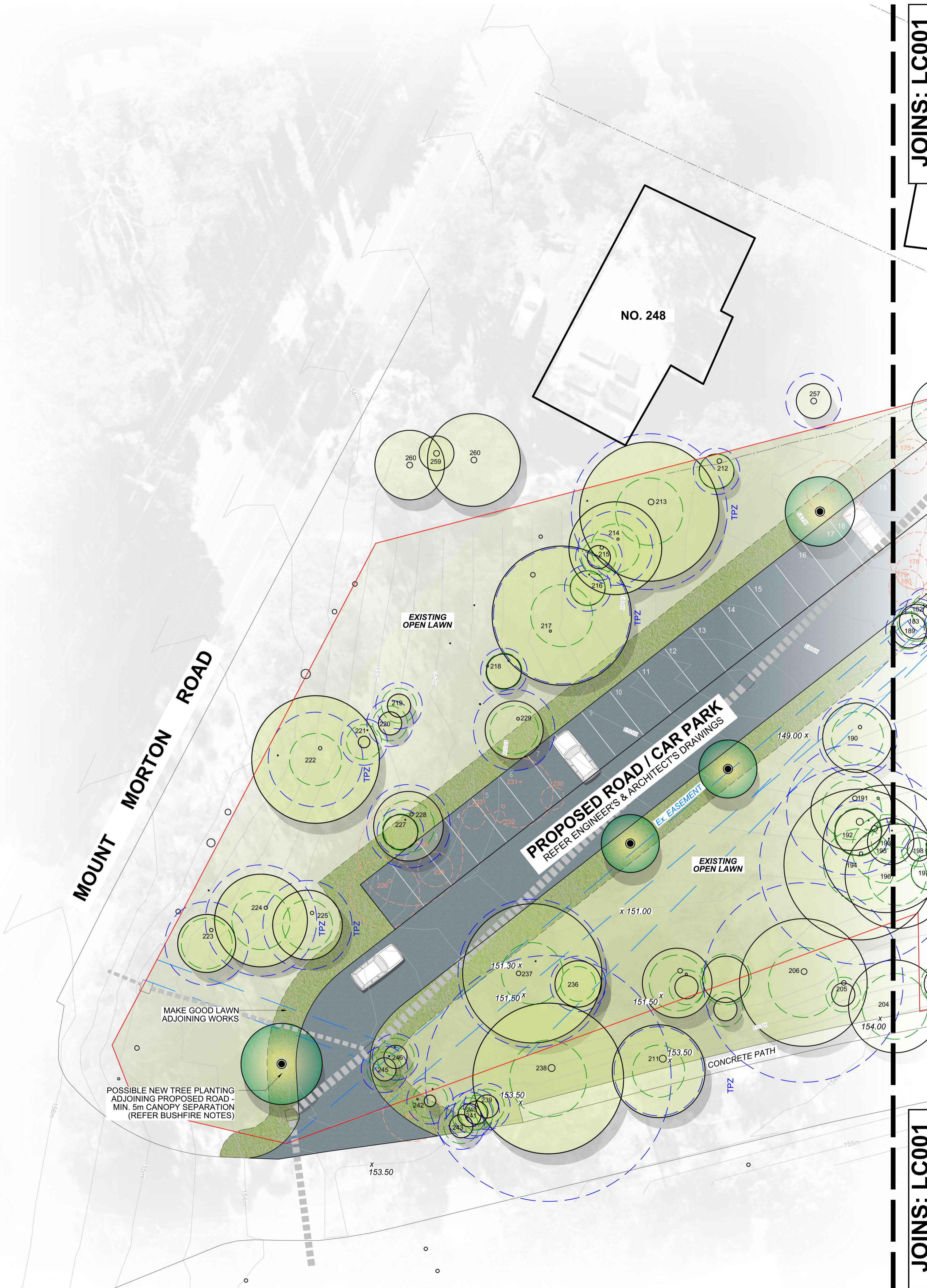
NOTES: DEFENDABLE SPACE & PLANTING

THE PLANTING SHOWN IS LIMITED BY THE FOLLOWING CFA BAL RATING REQUIREMENTS:

- GRASS MUST BE CROPPED AND MAINTAINED DURING THE DECLARED FIRE DANGER PERIOD.
- ALL LEAVES AND VEGETATION DEBRIS MUST BE REMOVED AT REGULAR INTERVALS DURING THE DECLARED FIRE DANGER PERIOD.
- WITHIN 10 METERS OF A BUILDING, FLAMMABLE OBJECTS MUST NOT BE LOCATED CLOSE TO THE VULNERABLE PARTS OF THE BUILDING
- PLANTS GREATER THAN 10 CENTIMETERS IN HEIGHT MUST NOT BE PLACED WITHIN 3 METERS OF A WINDOW OR GLASS FEATURE.
- SHRUBS MUST NOT BE LOCATED UNDER THE CANOPY OF TREES.
- INDIVIDUAL AND CLUMPS OF SHRUBS MUST NOT EXCEED 5 SQM IN AREA AND MUST BE SEPARATED BY AT LEAST 5 METERS.
- TREES MUST NOT OVERHANG OR TOUCH ANY ELEMENTS OF THE BUILDING.
- THE CANOPY OF TREES MUST BE SEPARATED BY AT LEAST 5 METERS (WITH THE EXCEPTION OF 5, 6 & 7).
- THERE MUST BE A CLEARANCE OF AT LEAST 2 METERS BETWEEN THE LOWEST TREE BRANCHES AND GROUND LEVEL.

ADVERTISED PLAN

This copied document to be made available for the sole purpose of enabling its consideration and review as part of a planning process under the Planning and Environment Act 1987. The document must not be used for any purpose which may breach any copyright



REVISIONS

REVISION:	DATE:	DESCRIPTION:
P	17/05/24	DRAFT
-	21/05/24	FOR APPROVAL
A	24/05/24	FOR APPROVAL
B	04/06/24	FOR APPROVAL
C	11/06/24	FOR APPROVAL
D	18/06/24	FOR APPROVAL
F	26/07/24	FOR APPROVAL

NOT FOR CONSTRUCTION
TO BE READ IN CONJUNCTION WITH ARCHITECTS' / ENGINEER'S DRAWINGS AND SPECIFICATIONS, SITE SURVEY AND ARBORISTS' INFORMATION

DIAL BEFORE YOU DIG
www.1100.com.au

LEGEND

- TITLE BOUNDARY**
Refer Site Survey
- EXISTING TREE - RETAIN**
Refer Arborist's Report
- PROPOSED TREES**
To future detail
- EXISTING TREE - REMOVE**
Refer Arborist's Report
- EXISTING TREE - SRZ**
Refer Arborist's Report
- EXISTING TREE - TPZ**
Refer Arborist's Report
- MULCHED GARDEN BEDS**
With native planting of grasses / groundcovers - to future detail
- LAWN AREAS**
Make adjoining works good and tie in with existing lawn areas
- CONCRETE PAVING - MAIN PLAZA**
Such as exposed aggregate concrete
- FEATURE PAVING**
Such as: local stone crazy paving
- CONCRETE PAVING - PATHWAYS**
Such as brushed concrete
- DECK PLATFORM SEATING**
Such as composite decking / steel frame
- BOULDER TERRACES**
Such as mudstone terraces nom. 0.5m high
- TERRACE / SEAT WALLS**
Such as insitu coloured concrete walls
- RETAINING WALLS**
Such as rendered reinforced block walls
- STEPS**
Concrete steps to match paving, including handrails, tactile indicators, etc.
- FEATURE SEAT**
Such as curved modular timber benches
- SAFETY BALUSTRADE**
Such as timber batten / steel rail
- PROPOSED SPOT LEVELS / TOP OF WALL LEVELS (ToW)**
Indicative - Refer Architect's & Engineer's drawings
- EXISTING SPOT LEVELS - RETAIN**
Refer Site Survey
- EXISTING 500mm CONTOURS**
Refer Site Survey
- LINE OF EXISTING INFRASTRUCTURE BELOW**
Refer Site Survey
- LINE OF EASEMENT**
Refer Site Survey
- ROAD / CAR PARK**
Refer Engineer's / Architect's Drawings

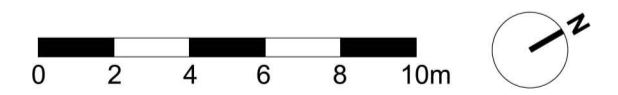
EXISTING TREES NOTE
REFER TO TREE PLAN AND ARBORISTS' REPORT FOR ADDITIONAL EXISTING TREE INFORMATION.

CLIENT:
BELGRAVE HEIGHTS CHRISTIAN SCHOOL
c/o SMITH + TRACEY ARCHITECTS

PROJECT:
BELGRAVE HEIGHTS CHRISTIAN SCHOOL PERFORMING ARTS/SENIOR SCHOOL
20 WATTLE VALLEY ROAD, BELGRAVE HEIGHTS

TITLE:
LANDSCAPE CONCEPT PLAN

DRAWING NUMBER:
LC002
1:200 at A1
1:400 at A3



RDLA
LANDSCAPE ARCHITECT
RDLA PTY LTD
INFO@RDLA.COM.AU

JOINS: LC001

JOINS: LC001

EXISTING TREE SCHEDULE

No.	Botanical Name	Common Name	Status
1	<i>Acacia melanoxylon</i>	Blackwood	Retain
2	<i>Acacia melanoxylon</i>	Blackwood	Retain
3	<i>Pinus radiata</i>	Monterey Pine	Retain
4	<i>Melaleuca styphelioides</i>	Prickly-Leaved Paperbark	Retain
5	<i>Acacia dealbata</i>	Silver Wattle	Retain
6	<i>Acacia mearnsii</i>	Black Wattle	Retain
7	<i>Eucalyptus ovata</i>	Swamp Gum	Remove
8	<i>Acacia mearnsii</i>	Black Wattle	Remove
9	<i>Eucalyptus ovata</i>	Swamp Gum	Remove
10	<i>Eucalyptus ovata</i>	Swamp Gum	Remove
11	<i>Eucalyptus ovata</i>	Swamp Gum	Remove
12	<i>Eucalyptus ovata</i>	Swamp Gum	Remove
13	<i>Acacia melanoxylon</i>	Blackwood	Remove
14	<i>Eucalyptus sp.</i>	Gum Tree	Remove
15	<i>Acacia melanoxylon</i>	Blackwood	Remove
16	<i>Cassia sp.</i>	Dogwood	Remove
17	<i>Eucalyptus obliqua</i>	Messmate Stringybark	Remove
18	<i>Melaleuca armillaris</i>	Bracelet Honey Myrtle	Remove
19	<i>Eucalyptus ovata</i>	Swamp Gum	Remove
20	<i>Eucalyptus ovata</i>	Swamp Gum	Remove
21	<i>Acacia melanoxylon</i>	Blackwood	Remove
22	<i>Acacia melanoxylon</i>	Blackwood	Remove
23	<i>Eucalyptus obliqua</i>	Messmate Stringybark	Remove
24	<i>Eucalyptus obliqua</i>	Messmate Stringybark	Remove
25	<i>Eucalyptus obliqua</i>	Messmate Stringybark	Remove
26	<i>Acacia melanoxylon</i>	Blackwood	Remove
27	<i>Acacia melanoxylon</i>	Blackwood	Remove
28	<i>Eucalyptus obliqua</i>	Messmate Stringybark	Remove
29	<i>Acacia melanoxylon</i>	Blackwood	Remove
30	<i>Eucalyptus obliqua</i>	Messmate Stringybark	Remove
31	<i>Eucalyptus obliqua</i>	Messmate Stringybark	Remove
32	<i>Eucalyptus ovata</i>	Swamp Gum	Remove
33	<i>Eucalyptus obliqua</i>	Messmate Stringybark	Remove
34	<i>Eucalyptus ovata</i>	Swamp Gum	Remove
35	<i>Eucalyptus radiata</i>	Narrow-leaved Peppermint	Remove
36	<i>Acacia melanoxylon</i>	Blackwood	Remove
37	<i>Eucalyptus sp.</i>	Gum Tree	Remove
38	<i>Eucalyptus radiata</i>	Narrow-leaved Peppermint	Retain
39	<i>Acacia melanoxylon</i>	Blackwood	Remove
40	<i>Acacia melanoxylon</i>	Blackwood	Remove
41	<i>Eucalyptus sp.</i>	Gum Tree	Remove
42	<i>Eucalyptus ovata</i>	Swamp Gum	Retain
43	<i>Eucalyptus obliqua</i>	Messmate Stringybark	Retain
44	<i>Acacia melanoxylon</i>	Blackwood	Remove
45	<i>Acacia melanoxylon</i>	Blackwood	Remove
46	<i>Acacia melanoxylon</i>	Blackwood	Remove
47	<i>Acacia melanoxylon</i>	Blackwood	Remove
48	<i>Eucalyptus obliqua</i>	Messmate Stringybark	Remove
49	<i>Eucalyptus obliqua</i>	Messmate Stringybark	Remove
50	<i>Eucalyptus obliqua</i>	Messmate Stringybark	Remove
51	<i>Acacia melanoxylon</i>	Blackwood	Remove
52	<i>Eucalyptus obliqua</i>	Messmate Stringybark	Remove
53	<i>Eucalyptus obliqua</i>	Messmate Stringybark	Remove
54	<i>Eucalyptus obliqua</i>	Messmate Stringybark	Retain
55	<i>Eucalyptus ovata</i>	Swamp Gum	Remove
56	<i>Acacia melanoxylon</i>	Blackwood	Remove
57	<i>Eucalyptus obliqua</i>	Messmate Stringybark	Remove
58	<i>Acacia melanoxylon</i>	Blackwood	Remove
59	<i>Acacia melanoxylon</i>	Blackwood	Remove
60	<i>Acacia melanoxylon</i>	Blackwood	Remove
61	<i>Acacia melanoxylon</i>	Blackwood	Remove
62	<i>Eucalyptus ovata</i>	Swamp Gum	Remove
63	<i>Acacia melanoxylon</i>	Blackwood	Remove
64	<i>Acacia melanoxylon</i>	Blackwood	Remove
65	<i>Acacia melanoxylon</i>	Blackwood	Remove
66	<i>Acacia melanoxylon</i>	Blackwood	Remove
67	<i>Acacia melanoxylon</i>	Blackwood	Remove
68	<i>Eucalyptus ovata</i>	Swamp Gum	Retain
69	<i>Acacia melanoxylon</i>	Blackwood	Remove
70	<i>Acacia melanoxylon</i>	Blackwood	Remove
71	<i>Eucalyptus ovata</i>	Swamp Gum	Remove
72	<i>Acacia melanoxylon</i>	Blackwood	Remove
73	<i>Eucalyptus radiata</i>	Narrow-leaved Peppermint	Retain
74	<i>Acacia melanoxylon</i>	Blackwood	Remove
75	<i>Acacia melanoxylon</i>	Blackwood	Retain
76	<i>Acacia melanoxylon</i>	Blackwood	Retain
77	<i>Acacia melanoxylon</i>	Blackwood	Remove
78	<i>Acacia melanoxylon</i>	Blackwood	Remove
79	<i>Acacia melanoxylon</i>	Blackwood	Remove
80	<i>Acacia melanoxylon</i>	Blackwood	Remove
81	<i>Acacia melanoxylon</i>	Blackwood	Remove
82	<i>Acacia melanoxylon</i>	Blackwood	Remove
83	<i>Acacia melanoxylon</i>	Blackwood	Remove
84	<i>Acacia melanoxylon</i>	Blackwood	Remove
85	<i>Eucalyptus ovata</i>	Swamp Gum	Remove
86	<i>Acacia melanoxylon</i>	Blackwood	Remove
87	<i>Acacia melanoxylon</i>	Blackwood	Remove
88	<i>Acacia melanoxylon</i>	Blackwood	Remove
89	<i>Acacia melanoxylon</i>	Blackwood	Remove
90	<i>Eucalyptus ovata</i>	Swamp Gum	Remove
91	<i>Acacia melanoxylon</i>	Blackwood	Remove
92	<i>Acacia melanoxylon</i>	Blackwood	Remove
93	<i>Eucalyptus ovata</i>	Swamp Gum	Retain
94	<i>Acacia melanoxylon</i>	Blackwood	Remove
95	<i>Acacia melanoxylon</i>	Blackwood	Remove
96	<i>Acacia melanoxylon</i>	Blackwood	Remove
97	<i>Acacia melanoxylon</i>	Blackwood	Remove
98	<i>Acacia melanoxylon</i>	Blackwood	Remove
99	<i>Eucalyptus ovata</i>	Swamp Gum	Remove

No.	Botanical Name	Common Name	Status
100	<i>Acacia melanoxylon</i>	Blackwood	Remove
101	<i>Eucalyptus robusta</i>	Swamp Mahogany	Remove
102	<i>Acacia melanoxylon</i>	Blackwood	Remove
103	<i>Eucalyptus sp.</i>	Gum Tree	Remove
104	<i>Acacia melanoxylon</i>	Blackwood	Remove
105	<i>Acacia melanoxylon</i>	Blackwood	Remove
106	<i>Acacia melanoxylon</i>	Blackwood	Remove
107	<i>Acacia melanoxylon</i>	Blackwood	Remove
108	<i>Acacia melanoxylon</i>	Blackwood	Remove
109	<i>Hakea salicifolia</i>	Willow-Leaved Hakea	Remove
110	<i>Eucalyptus ovata</i>	Swamp Gum	Retain
111	<i>Acacia melanoxylon</i>	Blackwood	Remove
112	<i>Acacia melanoxylon</i>	Blackwood	Remove
113	<i>Eucalyptus ovata</i>	Swamp Gum	Retain
114	<i>Eucalyptus ovata</i>	Swamp Gum	Retain
115	<i>Eucalyptus ovata</i>	Swamp Gum	Retain
116	<i>Acacia melanoxylon</i>	Blackwood	Remove
117	<i>Acacia melanoxylon</i>	Blackwood	Remove
118	<i>Eucalyptus ovata</i>	Swamp Gum	Retain
119	<i>Acacia melanoxylon</i>	Blackwood	Retain
120	<i>Acacia melanoxylon</i>	Blackwood	Retain
121	<i>Eucalyptus ovata</i>	Swamp Gum	Retain
122	<i>Acacia melanoxylon</i>	Blackwood	Retain
123	<i>Acacia melanoxylon</i>	Blackwood	Retain
124	<i>Acacia melanoxylon</i>	Blackwood	Retain
125	<i>Acacia melanoxylon</i>	Blackwood	Remove
126	<i>Acacia melanoxylon</i>	Blackwood	Remove
127	<i>Eucalyptus ovata</i>	Swamp Gum	Retain
128	<i>Eucalyptus ovata</i>	Swamp Gum	Retain
129	<i>Acacia melanoxylon</i>	Blackwood	Remove
130	<i>Eucalyptus ovata</i>	Swamp Gum	Remove
131	<i>Eucalyptus ovata</i>	Swamp Gum	Retain
132	<i>Acacia melanoxylon</i>	Blackwood	Remove
133	<i>Eucalyptus ovata</i>	Swamp Gum	Remove
134	<i>Acacia melanoxylon</i>	Blackwood	Remove
135	<i>Acacia melanoxylon</i>	Blackwood	Remove
136	<i>Acacia melanoxylon</i>	Blackwood	Remove
137	<i>Acacia melanoxylon</i>	Blackwood	Remove
138	<i>Acacia melanoxylon</i>	Blackwood	Remove
139	<i>Acacia melanoxylon</i>	Blackwood	Remove
140	<i>Acacia melanoxylon</i>	Blackwood	Retain
141	<i>Eucalyptus ovata</i>	Swamp Gum	Retain
142	<i>Eucalyptus ovata</i>	Swamp Gum	Retain
143	<i>Pinus radiata</i>	Monterey Pine	Remove
144	<i>Acacia melanoxylon</i>	Blackwood	Remove
145	<i>Acacia melanoxylon</i>	Blackwood	Remove
146	<i>Acacia melanoxylon</i>	Blackwood	Remove
147	<i>Acacia melanoxylon</i>	Blackwood	Remove
148	<i>Acacia melanoxylon</i>	Blackwood	Remove
149	<i>Acacia melanoxylon</i>	Blackwood	Remove
150	<i>Acacia melanoxylon</i>	Blackwood	Remove
151	<i>Acacia melanoxylon</i>	Blackwood	Remove
152	<i>Acacia melanoxylon</i>	Blackwood	Remove
153	<i>Acacia melanoxylon</i>	Blackwood	Remove
154	<i>Acacia melanoxylon</i>	Blackwood	Remove
155	<i>Acacia melanoxylon</i>	Blackwood	Remove
156	<i>Acacia melanoxylon</i>	Blackwood	Remove
157	<i>Eucalyptus sp.</i>	Gum Tree	Retain
158	<i>Acacia melanoxylon</i>	Blackwood	Retain
159	<i>Acacia melanoxylon</i>	Blackwood	Retain
160	<i>Acacia melanoxylon</i>	Blackwood	Retain
161	<i>Acacia melanoxylon</i>	Blackwood	Retain
162	<i>Acacia melanoxylon</i>	Blackwood	Retain
163	<i>Acacia melanoxylon</i>	Blackwood	Retain
164	<i>Eucalyptus ovata</i>	Swamp Gum	Retain
165	<i>Eucalyptus ovata</i>	Swamp Gum	Retain
166	<i>Acacia melanoxylon</i>	Blackwood	Retain
167	<i>Acacia melanoxylon</i>	Blackwood	Retain
168	<i>Acacia melanoxylon</i>	Blackwood	Retain
169	<i>Acacia melanoxylon</i>	Blackwood	Retain
170	<i>Acacia melanoxylon</i>	Blackwood	Retain
171	<i>Acacia melanoxylon</i>	Blackwood	Remove
172	<i>Acacia melanoxylon</i>	Blackwood	Retain
173	<i>Acacia melanoxylon</i>	Blackwood	Remove
174	<i>Acacia melanoxylon</i>	Blackwood	Remove
175	<i>Acacia melanoxylon</i>	Blackwood	Remove
176	<i>Unknown sp.</i>	Gum Tree	Remove
177	<i>Acacia melanoxylon</i>	Blackwood	Remove
178	<i>Eucalyptus ovata</i>	Swamp Gum	Remove
179	<i>Acacia melanoxylon</i>	Blackwood	Remove
180	<i>Acacia melanoxylon</i>	Blackwood	Remove
181	<i>Acacia melanoxylon</i>	Blackwood	Remove
182	<i>Eucalyptus ovata</i>	Swamp Gum	Retain
183	<i>Acacia melanoxylon</i>	Blackwood	Retain
184	<i>Acacia melanoxylon</i>	Blackwood	Retain
185	<i>Acacia melanoxylon</i>	Blackwood	Retain
186	<i>Eucalyptus ovata</i>	Swamp Gum	Retain
187	<i>Acacia melanoxylon</i>	Blackwood	Retain
188	<i>Acacia melanoxylon</i>	Blackwood	Retain
189	<i>Acacia melanoxylon</i>	Blackwood	Retain
190	<i>Acacia melanoxylon</i>	Blackwood	Retain
191	<i>Eucalyptus ovata</i>	Swamp Gum	Retain
192	<i>Acacia melanoxylon</i>	Blackwood	Retain
193	<i>Acacia melanoxylon</i>	Blackwood	Retain
194	<i>Eucalyptus obliqua</i>	Messmate Stringybark	Retain
195	<i>Eucalyptus obliqua</i>	Messmate Stringybark	Retain
196	<i>Eucalyptus obliqua</i>	Messmate Stringybark	Retain
197	<i>Acacia melanoxylon</i>	Blackwood	Retain
198	<i>Acacia melanoxylon</i>	Blackwood	Retain
199	<i>Acacia melanoxylon</i>	Blackwood	Retain

No.	Botanical Name	Common Name	Status
200	<i>Acacia melanoxylon</i>	Blackwood	Retain
201	<i>Eucalyptus radiata</i>	Narrow-leaved Peppermint	Retain
202	<i>Acacia melanoxylon</i>	Blackwood	Retain
203	<i>Acacia melanoxylon</i>	Blackwood	Retain
204	<i>Acacia melanoxylon</i>	Blackwood	Retain
205	<i>Acacia melanoxylon</i>	Blackwood	Retain
206	<i>Eucalyptus obliqua</i>	Messmate Stringybark	Retain
207	<i>Acacia melanoxylon</i>	Blackwood	Retain
208	<i>Acacia melanoxylon</i>	Blackwood	Retain
209	<i>Acacia melanoxylon</i>	Blackwood	Retain
210	<i>Acacia melanoxylon</i>	Blackwood	Retain
211	<i>Eucalyptus ovata</i>	Swamp Gum	Retain
212	<i>Pittosporum undulatum</i>	Sweet Pittosporum	Retain
213	<i>Acacia melanoxylon</i>	Blackwood	Retain
214	<i>Acacia melanoxylon</i>	Blackwood	Retain
215	<i>Acacia melanoxylon</i>	Blackwood	Retain
216	<i>Pittosporum undulatum</i>	Sweet Pittosporum	Retain
217	<i>Eucalyptus ovata</i>	Swamp Gum	Retain
218	<i>Eucalyptus ovata</i>	Swamp Gum	Retain
219	<i>Acacia melanoxylon</i>	Blackwood	Retain
220	<i>Acacia melanoxylon</i>	Blackwood	Retain
221	<i>Acacia melanoxylon</i>	Blackwood	Retain
222	<i>Eucalyptus radiata</i>	Narrow-leaved Peppermint	Retain
223	<i>Acacia melanoxylon</i>	Blackwood	Retain
224	<i>Eucalyptus radiata</i>	Narrow-leaved Peppermint	Retain
225	<i>Acacia melanoxylon</i>	Blackwood	Retain
226	<i>Acacia melanoxylon</i>	Blackwood	Remove
227	<i>Acacia melanoxylon</i>	Blackwood	Retain
228	<i>Eucalyptus radiata</i>	Narrow-leaved Peppermint	Retain
229	<i>Acacia melanoxylon</i>	Blackwood	Retain
230	<i>Acacia melanoxylon</i>	Blackwood	Remove
231	<i>Acacia melanoxylon</i>	Blackwood	Remove
232	<i>Acacia melanoxylon</i>	Blackwood	Remove
233	<i>Acacia melanoxylon</i>	Blackwood	Remove
234	<i>Eucalyptus ovata</i>	Swamp Gum	Remove
235	<i>Acacia melanoxylon</i>	Blackwood	Remove
236	<i>Acacia melanoxylon</i>	Blackwood	Retain
237	<i>Eucalyptus ovata</i>	Swamp Gum	Retain
238	<i>Eucalyptus ovata</i>	Swamp Gum	Retain
239	<i>Eucalyptus ovata</i>	Swamp Gum	Retain
240	<i>Acacia melanoxylon</i>	Blackwood	Retain
241	<i>Acacia melanoxylon</i>	Blackwood	Retain
242	<i>Eucalyptus ovata</i>	Swamp Gum	Retain
243	<i>Eucalyptus ovata</i>	Swamp Gum	Retain
244	<i>Eucalyptus ovata</i>	Swamp Gum	Remove
245	<i>Acacia melanoxylon</i>	Blackwood	Retain
246	<i>Acacia melanoxylon</i>	Blackwood	Retain

NOTES: EXISTING TREE SCHEDULE

THE EXISTING TREE SCHEDULE MUST BE READ IN CONJUNCTION WITH THE ARBORIST'S INFORMATION. TREE SPECIES, NUMBERS ETC. HAVE BEEN ASCERTAINED FROM THIS INFORMATION AND ADDED TO THE LANDSCAPE DRAWINGS.

ALSO REFER TO BUSHFIRE MANAGEMENT PLAN PREPARED BY MILLAR MERRIGAN FOR DETAILS OF TREES REMOVED / RETAINED FOR BUSHFIRE PROTECTION / DEFENDABLE SPACE PURPOSES.

EXISTING TREES NOTE

REFER TO TREE PLAN AND ARBORIST'S REPORT FOR ADDITIONAL EXISTING TREE INFORMATION

ADVERTISED PLAN

REVISIONS

	Date	Description
-	21/05/24	FOR APPROVAL
A	24/05/24	FOR APPROVAL
B	04/06/24	FOR APPROVAL
C	11/06/24	FOR APPROVAL
D	18/06/24	FOR APPROVAL
F	26/07/24	FOR APPROVAL

NOT FOR CONSTRUCTION
TO BE READ IN CONJUNCTION WITH ARCHITECTS' / ENGINEER'S DRAWINGS AND SPECIFICATIONS, SITE SURVEY AND ARBORIST'S INFORMATION

DIAL BEFORE YOU DIG
www.1100.com.au

This copied document to be made available for the sole purpose of enabling its consideration and review as part of a planning process under the Planning and Environment Act 1987. The document must not be used for any purpose which may breach any copyright

CLIENT:
BELGRAVE HEIGHTS CHRISTIAN SCHOOL
c/o SMITH + TRACEY ARCHITECTS

PROJECT:
BELGRAVE HEIGHTS CHRSTIAN SCHOOL PERFORMING ARTS/SENIOR SCHOOL
20 WATTLE VALLEY ROAD, BELGRAVE HEIGHTS

TITLE:
LANDSCAPE CONCEPT PLAN

DRAWING NUMBER:
LC003

1:200 at A1
1:400 at A3
0 2 4 6 8 10m

RDLA

LANDSCAPE ARCHITECT
RDLA PTY LTD
INFO@RDLA.COM.AU