

This report provides information to support an application to remove, destroy or lop native vegetation in accordance with the *Guidelines for the removal, destruction or lopping of native vegetation*. The report **is not an assessment by DELWP** of the proposed native vegetation removal. Native vegetation information and offset requirements have been determined using spatial data provided by the applicant or their consultant.

Date of issue: 28/02/2023

Report ID: BIO\_2023\_148

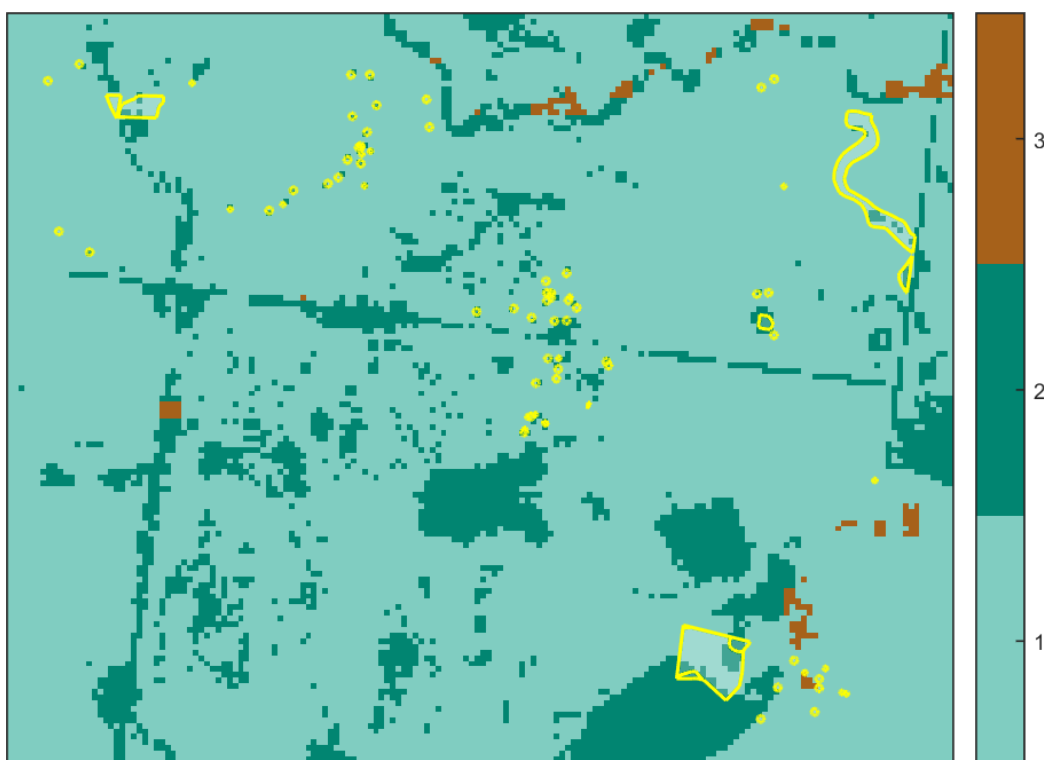
Time of issue: 3:51 pm

Project ID	36540_VegRemoval_20230224
------------	---------------------------

## Assessment pathway

Assessment pathway	Detailed Assessment Pathway
Extent including past and proposed	18.330 ha
Extent of past removal	0.000 ha
Extent of proposed removal	18.330 ha
No. Large trees proposed to be removed	54
Location category of proposed removal	Location 3 The native vegetation is in an area where the removal of less than 0.5 hectares could have a significant impact on habitat for one or more rare or threatened species. The native vegetation is also in an area mapped as an endangered Ecological Vegetation Class (as per the statewide EVC map).

### 1. Location map



**ADVERTISED  
PLAN**



Environment,  
Land, Water  
and Planning

## Offset requirements if a permit is granted

Any approval granted will include a condition to obtain an offset that meets the following requirements:

<b>General offset amount<sup>1</sup></b>	4.855 general habitat units
Vicinity	Port Phillip and Westernport Catchment Management Authority (CMA) or Greater Geelong City Council
Minimum strategic biodiversity value score <sup>2</sup>	0.348
Large trees	54 large trees

NB: values within tables in this document may not add to the totals shown above due to rounding

Appendix 1 includes information about the native vegetation to be removed

Appendix 2 includes information about the rare or threatened species mapped at the site.

Appendix 3 includes maps showing native vegetation to be removed and extracts of relevant species habitat importance maps

**ADVERTISED  
PLAN**

<sup>1</sup> The general offset amount required is the sum of all general habitat units in Appendix 1.

<sup>2</sup> Minimum strategic biodiversity score is 80 per cent of the weighted average score across habitat zones where a general offset is required

## Next steps

Any proposal to remove native vegetation must meet the application requirements of the Detailed Assessment Pathway and it will be assessed under the Detailed Assessment Pathway.

If you wish to remove the mapped native vegetation you are required to apply for a permit from your local council. Council will refer your application to DELWP for assessment, as required. **This report is not a referral assessment by DELWP.**

This *Native vegetation removal report* must be submitted with your application for a permit to remove, destroy or lop native vegetation.

Refer to the *Guidelines for the removal, destruction or lopping of native vegetation* (the Guidelines) for a full list of application requirements. This report provides information that meets the following application requirements:

- The assessment pathway and reason for the assessment pathway
- A description of the native vegetation to be removed (partly met)
- Maps showing the native vegetation and property (partly met)
- Information about the impacts on rare or threatened species.
- The offset requirements determined in accordance with section 5 of the Guidelines that apply if approval is granted to remove native vegetation.

Additional application requirements must be met including:

- Topographical and land information
- Recent dated photographs
- Details of past native vegetation removal
- An avoid and minimise statement
- A copy of any Property Vegetation Plan that applies
- A defensible space statement as applicable
- A statement about the Native Vegetation Precinct Plan as applicable
- A site assessment report including a habitat hectare assessment of any patches of native vegetation and details of trees
- An offset statement that explains that an offset has been identified and how it will be secured.

## ADVERTISED PLAN

© The State of Victoria Department of Environment, Land, Water and Planning Melbourne 2023

This work is licensed under a Creative Commons Attribution 4.0 International licence. You are free to re-use the work under that licence, on the condition that you credit the State of Victoria as author. The licence does not apply to any images, photographs or branding, including the Victorian Coat of Arms, the Victorian Government logo and the Department of Environment, Land, Water and Planning logo. To view a copy of this licence, visit <http://creativecommons.org/licenses/by/3.0/au/deed.en>

Authorised by the Victorian Government, 8 Nicholson Street, East Melbourne.

For more information contact the DELWP Customer Service Centre 136 186

[www.delwp.vic.gov.au](http://www.delwp.vic.gov.au)

### Disclaimer

This publication may be of assistance to you but the State of Victoria and its employees do not guarantee that the publication is without flaw of any kind or is wholly appropriate for your particular purposes and therefore disclaims all liability for any error, loss or other consequence which may arise from you relying on any information in this publication.

Obtaining this publication does not guarantee that an application will meet the requirements of Clauses 52.16 or 52.17 of the Victoria Planning Provisions and Victorian planning schemes or that a permit to remove native vegetation will be granted.

Notwithstanding anything else contained in this publication, you must ensure that you comply with all relevant laws, legislation, awards or orders and that you obtain and comply with all permits, approvals and the like that affect, are applicable or are necessary to undertake any action to remove, lop or destroy or otherwise deal with any native vegetation or that apply to matters within the scope of Clauses 52.16 or 52.17 of the Victoria Planning Provisions and Victorian planning schemes.

# ADVERTISED PLAN

## Appendix 1: Description of native vegetation to be removed

The species-general offset test was applied to your proposal. This test determines if the proposed removal of native vegetation has a proportional impact on any rare or threatened species habitats above the species offset threshold. The threshold is set at 0.005 per cent of the mapped habitat value for a species. When the proportional impact is above the species offset threshold a species offset is required. This test is done for all species mapped at the site. Multiple species offsets will be required if the species offset threshold is exceeded for multiple species.

Where a zone requires species offset(s), the species habitat units for each species in that zone is calculated by the following equation in accordance with the Guidelines:

$$\text{Species habitat units} = \text{extent} \times \text{condition} \times \text{species landscape factor} \times 2, \text{ where the species landscape factor} = 0.5 + (\text{habitat importance score}/2)$$

The species offset amount(s) required is the sum of all species habitat units per zone

Where a zone does not require a species offset, the general habitat units in that zone is calculated by the following equation in accordance with the Guidelines:

$$\text{General habitat units} = \text{extent} \times \text{condition} \times \text{general landscape factor} \times 1.5, \text{ where the general landscape factor} = 0.5 + (\text{strategic biodiversity value score}/2)$$

The general offset amount required is the sum of all general habitat units per zone.

### Native vegetation to be removed

Information provided by or on behalf of the applicant in a GIS file							Information calculated by EnSym					
Zone	Type	BioEVC	BioEVC conservation status	Large tree(s)	Partial removal	Condition score	Polygon Extent	Extent without overlap	SBV score	HI score	Habitat units	Offset type
59-ST	Scattered Tree	cvu_0071	Vulnerable	1	no	0.200	0.071	0.071	0.980		0.021	General
61-ST	Scattered Tree	cvu_0071	Vulnerable	1	no	0.200	0.071	0.071	0.971		0.021	General
62-ST	Scattered Tree	cvu_0071	Vulnerable	1	no	0.200	0.071	0.071	0.990		0.021	General
68-ST	Scattered Tree	cvu_0071	Vulnerable	1	no	0.200	0.071	0.071	0.559		0.017	General
71-ST	Scattered Tree	cvu_0071	Vulnerable	0	no	0.200	0.031	0.031	0.980		0.009	General
72-ST	Scattered Tree	cvu_0071	Vulnerable	0	no	0.200	0.031	0.031	0.980		0.009	General
78-ST	Scattered Tree	cvu_0071	Vulnerable	0	no	0.200	0.031	0.031	0.420		0.007	General

# ADVERTISED PLAN

Information provided by or on behalf of the applicant in a GIS file							Information calculated by EnSym					
Zone	Type	BioEVC	BioEVC conservation status	Large tree(s)	Partial removal	Condition score	Polygon Extent	Extent without overlap	SBV score	HI score	Habitat units	Offset type
8-ST	Scattered Tree	vvp_0055_61	Endangered	0	no	0.200	0.031	0.021	0.410		0.004	General
12-ST	Scattered Tree	vvp_0055_61	Endangered	0	no	0.200	0.031	0.021	0.410		0.004	General
13-ST	Scattered Tree	vvp_0055_61	Endangered	0	no	0.200	0.031	0.015	0.410		0.003	General
15-ST	Scattered Tree	vvp_0055_61	Endangered	0	no	0.200	0.031	0.028	0.410		0.006	General
16-ST	Scattered Tree	vvp_0055_61	Endangered	0	no	0.200	0.031	0.013	0.410		0.003	General
47-ST	Scattered Tree	vvp_0055_61	Endangered	1	no	0.200	0.071	0.071	0.411		0.015	General
48-ST	Scattered Tree	vvp_0055_61	Endangered	1	no	0.200	0.071	0.071	0.410		0.015	General
0-ST	Scattered Tree	vvp_0055_61	Endangered	0	no	0.200	0.031	0.031	0.138		0.005	General
14-ST	Scattered Tree	vvp_0055_61	Endangered	0	no	0.200	0.031	0.020	0.410		0.004	General
17-ST	Scattered Tree	vvp_0055_61	Endangered	1	no	0.200	0.071	0.071	0.175		0.012	General
19-ST	Scattered Tree	vvp_0055_61	Endangered	1	no	0.200	0.071	0.071	0.150		0.012	General
20-ST	Scattered Tree	vvp_0055_61	Endangered	1	no	0.200	0.071	0.071	0.187		0.013	General
21-ST	Scattered Tree	vvp_0055_61	Endangered	1	no	0.200	0.071	0.071	0.180		0.013	General
22-ST	Scattered Tree	vvp_0055_61	Endangered	1	no	0.200	0.071	0.071	0.180		0.013	General
42-ST	Scattered Tree	vvp_0055_61	Endangered	1	no	0.200	0.071	0.058	0.410		0.012	General

# ADVERTISED PLAN

Information provided by or on behalf of the applicant in a GIS file							Information calculated by EnSym					
Zone	Type	BioEVC	BioEVC conservation status	Large tree(s)	Partial removal	Condition score	Polygon Extent	Extent without overlap	SBV score	HI score	Habitat units	Offset type
43-ST	Scattered Tree	vvp_0055_61	Endangered	1	no	0.200	0.071	0.062	0.410		0.013	General
44-ST	Scattered Tree	vvp_0055_61	Endangered	1	no	0.200	0.071	0.071	0.392		0.015	General
45-ST	Scattered Tree	vvp_0055_61	Endangered	1	no	0.200	0.071	0.071	0.410		0.015	General
46-ST	Scattered Tree	vvp_0055_61	Endangered	1	no	0.200	0.071	0.071	0.410		0.015	General
49-ST	Scattered Tree	vvp_0055_61	Endangered	1	no	0.200	0.071	0.071	0.410		0.015	General
51-ST	Scattered Tree	vvp_0055_61	Endangered	1	no	0.200	0.071	0.071	0.410		0.015	General
52-ST	Scattered Tree	vvp_0055_61	Endangered	1	no	0.200	0.071	0.067	0.410		0.014	General
54-ST	Scattered Tree	vvp_0055_61	Endangered	1	no	0.200	0.071	0.053	0.410		0.011	General
55-ST	Scattered Tree	vvp_0055_61	Endangered	1	no	0.200	0.071	0.071	0.410		0.015	General
56-ST	Scattered Tree	vvp_0055_61	Endangered	1	no	0.200	0.071	0.071	0.390		0.015	General
57-ST	Scattered Tree	vvp_0055_61	Endangered	1	no	0.200	0.071	0.071	0.410		0.015	General
58-ST	Scattered Tree	vvp_0055_61	Endangered	1	no	0.200	0.071	0.071	0.410		0.015	General
1-ST	Scattered Tree	vvp_0055_61	Endangered	0	no	0.200	0.031	0.003	0.200		0.001	General
2-ST	Scattered Tree	vvp_0055_61	Endangered	0	no	0.200	0.031	0.031	0.230		0.006	General
3-ST	Scattered Tree	vvp_0055_61	Endangered	0	no	0.200	0.031	0.031	0.200		0.006	General

# ADVERTISED PLAN

Information provided by or on behalf of the applicant in a GIS file							Information calculated by EnSym					
Zone	Type	BioEVC	BioEVC conservation status	Large tree(s)	Partial removal	Condition score	Polygon Extent	Extent without overlap	SBV score	HI score	Habitat units	Offset type
4-ST	Scattered Tree	vvp_0055_61	Endangered	0	no	0.200	0.031	0.031	0.180		0.006	General
5-ST	Scattered Tree	vvp_0055_61	Endangered	0	no	0.200	0.031	0.031	0.200		0.006	General
6-ST	Scattered Tree	vvp_0055_61	Endangered	0	no	0.200	0.031	0.031	0.440		0.007	General
7-ST	Scattered Tree	vvp_0055_61	Endangered	0	no	0.200	0.031	0.031	0.180		0.006	General
23-ST	Scattered Tree	vvp_0055_61	Endangered	1	no	0.200	0.071	0.071	0.200		0.013	General
24-ST	Scattered Tree	vvp_0055_61	Endangered	1	no	0.200	0.071	0.071	0.180		0.013	General
25-ST	Scattered Tree	vvp_0055_61	Endangered	1	no	0.200	0.071	0.051	0.200		0.009	General
27-ST	Scattered Tree	vvp_0055_61	Endangered	1	no	0.200	0.071	0.071	0.200		0.013	General
28-ST	Scattered Tree	vvp_0055_61	Endangered	1	no	0.200	0.071	0.071	0.190		0.013	General
29-ST	Scattered Tree	vvp_0055_61	Endangered	1	no	0.200	0.071	0.071	0.209		0.013	General
30-ST	Scattered Tree	vvp_0055_61	Endangered	1	no	0.200	0.071	0.071	0.150		0.012	General
31-ST	Scattered Tree	vvp_0055_61	Endangered	1	no	0.200	0.071	0.071	0.200		0.013	General
32-ST	Scattered Tree	vvp_0055_61	Endangered	1	no	0.200	0.071	0.071	0.410		0.015	General
33-ST	Scattered Tree	vvp_0055_61	Endangered	1	no	0.200	0.071	0.071	0.660		0.018	General
34-ST	Scattered Tree	vvp_0055_61	Endangered	1	no	0.200	0.071	0.071	0.180		0.013	General

# ADVERTISED PLAN

Information provided by or on behalf of the applicant in a GIS file							Information calculated by EnSym					
Zone	Type	BioEVC	BioEVC conservation status	Large tree(s)	Partial removal	Condition score	Polygon Extent	Extent without overlap	SBV score	HI score	Habitat units	Offset type
36-ST	Scattered Tree	vvp_0055_61	Endangered	1	no	0.200	0.071	0.071	0.150		0.012	General
37-ST	Scattered Tree	vvp_0055_61	Endangered	1	no	0.200	0.071	0.071	0.196		0.013	General
38-ST	Scattered Tree	vvp_0055_61	Endangered	1	no	0.200	0.071	0.071	0.430		0.015	General
39-ST	Scattered Tree	vvp_0055_61	Endangered	1	no	0.200	0.071	0.071	0.203		0.013	General
40-ST	Scattered Tree	vvp_0055_61	Endangered	1	no	0.200	0.071	0.071	0.420		0.015	General
41-ST	Scattered Tree	vvp_0055_61	Endangered	1	no	0.200	0.071	0.051	0.200		0.009	General
1-SX	Scattered Tree	vvp_0055_61	Endangered	1	no	0.200	0.071	0.071	0.376		0.015	General
2-SX	Scattered Tree	vvp_0055_61	Endangered	1	no	0.200	0.071	0.071	0.304		0.014	General
9-SX	Scattered Tree	vvp_0055_61	Endangered	1	no	0.200	0.071	0.071	0.430		0.015	General
10-SX	Scattered Tree	vvp_0055_61	Endangered	1	no	0.200	0.071	0.071	0.426		0.015	General
11-SX	Scattered Tree	vvp_0055_61	Endangered	1	no	0.200	0.071	0.071	0.430		0.015	General
20-SX	Scattered Tree	vvp_0055_61	Endangered	1	no	0.200	0.071	0.071	0.430		0.015	General
22-SX	Scattered Tree	vvp_0055_61	Endangered	1	no	0.200	0.071	0.063	0.410		0.013	General
23-SX	Scattered Tree	vvp_0055_61	Endangered	1	no	0.200	0.071	0.063	0.410		0.013	General
68-ST	Scattered Tree	cvu_0071	Vulnerable	1	no	0.200	0.071	0.071	0.960		0.021	General



Information provided by or on behalf of the applicant in a GIS file							Information calculated by EnSym					
Zone	Type	BioEVC	BioEVC conservation status	Large tree(s)	Partial removal	Condition score	Polygon Extent	Extent without overlap	SBV score	HI score	Habitat units	Offset type
24-SX	Scattered Tree	cvu_0071	Vulnerable	1	no	0.200	0.071	0.071	0.960		0.021	General
27-SX	Scattered Tree	cvu_0071	Vulnerable	0	no	0.200	0.031	0.031	0.960		0.009	General
28-SX	Scattered Tree	cvu_0071	Vulnerable	0	no	0.200	0.031	0.031	0.960		0.009	General
32-SX	Scattered Tree	vvp_0055_61	Endangered	0	no	0.200	0.031	0.031	0.430		0.007	General
28-A	Patch	vvp_0055_61	Endangered	0	no	0.430	0.240	0.240	0.522		0.118	General
21-A	Patch	vvp_0132_61	Endangered	0	no	0.260	0.441	0.441	0.702		0.146	General
3-A	Patch	vvp_0128	Endangered	0	no	0.410	0.022	0.022	0.470		0.010	General
30-A	Patch	vvp_0132_61	Endangered	2	no	0.230	6.077	6.077	0.528		1.602	General
19-A	Patch	vvp_0132_61	Endangered	0	no	0.260	0.361	0.361	0.420		0.100	General
6-A	Patch	vvp_0055_61	Endangered	1	no	0.380	0.317	0.317	0.180		0.107	General
3-b	Patch	vvp_0128	Endangered	0	no	0.410	0.393	0.393	0.446		0.175	General
5-A	Patch	vvp_0132_61	Endangered	0	no	0.270	4.894	4.894	0.237		1.226	General
32-A	Patch	vvp_0132_61	Endangered	0	no	0.190	0.018	0.018	0.410		0.004	General
16-A	Patch	vvp_0132_61	Endangered	0	no	0.260	1.531	1.531	0.736		0.518	General

**ADVERTISED  
PLAN**

# ADVERTISED PLAN

## Appendix 2: Information about impacts to rare or threatened species' habitats on site

This table lists all rare or threatened species' habitats mapped at the site.

Species common name	Species scientific name	Species number	Conservation status	Group	Habitat impacted	% habitat value affected
Small Golden Moths	<i>Diuris basaltica</i>	501473	Endangered	Dispersed	Habitat importance map	0.0039
Heath Spear-grass	<i>Austrostipa exilis</i>	503984	Rare	Dispersed	Habitat importance map	0.0033
Basalt Podolepis	<i>Podolepis linearifolia</i>	504658	Endangered	Dispersed	Habitat importance map	0.0015
Fragrant Saltbush	<i>Rhagodia parabolica</i>	502929	Rare	Dispersed	Habitat importance map	0.0014
Melbourne Yellow-gum	<i>Eucalyptus leucoxylon subsp. connata</i>	504484	Vulnerable	Dispersed	Habitat importance map	0.0010
Large-headed Fireweed	<i>Senecio macrocarpus</i>	503116	Endangered	Dispersed	Habitat importance map	0.0010
Button Wrinklewort	<i>Rutidosia leptorhynchoides</i>	502982	Endangered	Dispersed	Habitat importance map	0.0008
Plump Swamp Wallaby-grass	<i>Amphibromus pithogastrus</i>	503624	Endangered	Dispersed	Habitat importance map	0.0008
Spiny Rice-flower	<i>Pimelea spinescens subsp. spinescens</i>	504823	Endangered	Dispersed	Habitat importance map	0.0008
Brackish Plains Buttercup	<i>Ranunculus diminutus</i>	504314	Rare	Dispersed	Habitat importance map	0.0007
Grassland Earless Dragon	<i>Tympanocryptis pinguicolla</i>	12922	Critically endangered	Dispersed	Habitat importance map	0.0007
Clumping Golden Moths	<i>Diuris gregaria</i>	504887	Endangered	Dispersed	Habitat importance map	0.0007
Small Scurf-pea	<i>Cullen parvum</i>	502773	Endangered	Dispersed	Habitat importance map	0.0006
Cane Spear-grass	<i>Austrostipa breviglumis</i>	503268	Rare	Dispersed	Habitat importance map	0.0005
Snowy Mint-bush	<i>Prostanthera nivea var. nivea</i>	502746	Rare	Dispersed	Habitat importance map	0.0005
Pale-flower Crane's-bill	<i>Geranium sp. 3</i>	505344	Rare	Dispersed	Habitat importance map	0.0004
Tough Scurf-pea	<i>Cullen tenax</i>	502776	Endangered	Dispersed	Habitat importance map	0.0004
Rye Beetle-grass	<i>Tripogon loliiformis</i>	503455	Rare	Dispersed	Habitat importance map	0.0004

# ADVERTISED PLAN

Matted Flax-lily	<i>Dianella amoena</i>	505084	Endangered	Dispersed	Habitat importance map	0.0004
Velvet Daisy-bush	<i>Olearia pannosa subsp. cardiophylla</i>	502317	Vulnerable	Dispersed	Habitat importance map	0.0004
Arching Flax-lily	<i>Dianella sp. aff. longifolia (Benambra)</i>	505560	Vulnerable	Dispersed	Habitat importance map	0.0003
Pale Swamp Everlasting	<i>Coronidium gunnianum</i>	504655	Vulnerable	Dispersed	Habitat importance map	0.0003
Rosemary Grevillea	<i>Grevillea rosmarinifolia subsp. rosmarinifolia</i>	504066	Rare	Dispersed	Habitat importance map	0.0003
Werribee Blue-box	<i>Eucalyptus baueriana subsp. thalassina</i>	507580	Endangered	Dispersed	Habitat importance map	0.0003
Branching Groundsel	<i>Senecio cunninghamii var. cunninghamii</i>	503104	Rare	Dispersed	Habitat importance map	0.0003
Large-flower Crane's-bill	<i>Geranium sp. 1</i>	505342	Endangered	Dispersed	Habitat importance map	0.0002
Golden Cowslips	<i>Diuris behrii</i>	501061	Vulnerable	Dispersed	Habitat importance map	0.0002
Brittle Greenhood	<i>Pterostylis truncata</i>	502821	Endangered	Dispersed	Habitat importance map	0.0002
Australian Painted Snipe	<i>Rostratula australis</i>	10170	Critically endangered	Dispersed	Habitat importance map	0.0002
Small Milkwort	<i>Comesperma polygaloides</i>	500798	Vulnerable	Dispersed	Habitat importance map	0.0002
Dark Wire-grass	<i>Aristida calycina var. calycina</i>	503630	Rare	Dispersed	Habitat importance map	0.0002
Hairy Tails	<i>Ptilotus erubescens</i>	502825	Vulnerable	Dispersed	Habitat importance map	0.0002
Buloke Mistletoe	<i>Amyema linophylla subsp. orientalis</i>	500217	Vulnerable	Dispersed	Habitat importance map	0.0001
Dwarf Brooklime	<i>Gratiola pumilo</i>	503753	Rare	Dispersed	Habitat importance map	0.0001
Austral Tobacco	<i>Nicotiana suaveolens</i>	502275	Rare	Dispersed	Habitat importance map	0.0001
Waterbush	<i>Myoporum montanum</i>	502240	Rare	Dispersed	Habitat importance map	0.0001
Clover Glycine	<i>Glycine latrobeana</i>	501456	Vulnerable	Dispersed	Habitat importance map	0.0001
Buloke	<i>Allocasuarina luehmannii</i>	500678	Endangered	Dispersed	Habitat importance map	0.0001
Late-flower Flax-lily	<i>Dianella tarda</i>	505085	Vulnerable	Dispersed	Habitat importance map	0.0001

Golden Sun Moth	<i>Synemon plana</i>	15021	Critically endangered	Dispersed	Habitat importance map	0.0001
Silky Kidney-weed	<i>Dichondra sp. 1</i>	505786	Rare	Dispersed	Habitat importance map	0.0001
Black Falcon	<i>Falco subniger</i>	10238	Vulnerable	Dispersed	Habitat importance map	0.0000
Purple Diuris	<i>Diuris punctata</i>	501084	Vulnerable	Dispersed	Habitat importance map	0.0000
Swamp Fireweed	<i>Senecio psilocarpus</i>	504659	Vulnerable	Dispersed	Habitat importance map	0.0000
Brolga	<i>Grus rubicunda</i>	10177	Vulnerable	Dispersed	Habitat importance map	0.0000
Austral Crane's-bill	<i>Geranium solanderi var. solanderi s.s.</i>	505337	Vulnerable	Dispersed	Habitat importance map	0.0000
Port Lincoln Snake	<i>Parasuta spectabilis</i>	12813	Vulnerable	Dispersed	Habitat importance map	0.0000
Striped Legless Lizard	<i>Delma impar</i>	12159	Endangered	Dispersed	Habitat importance map	0.0000
Parsley Xanthosia	<i>Xanthosia leiophylla</i>	504562	Rare	Dispersed	Habitat importance map	0.0000
Dense Mint-bush	<i>Prostanthera decussata</i>	502739	Rare	Dispersed	Habitat importance map	0.0000
Painted Honeyeater	<i>Grantiella picta</i>	10598	Vulnerable	Dispersed	Habitat importance map	0.0000

#### Habitat group

- Highly localised habitat means there is 2000 hectares or less mapped habitat for the species
- Dispersed habitat means there is more than 2000 hectares of mapped habitat for the species

#### Habitat impacted

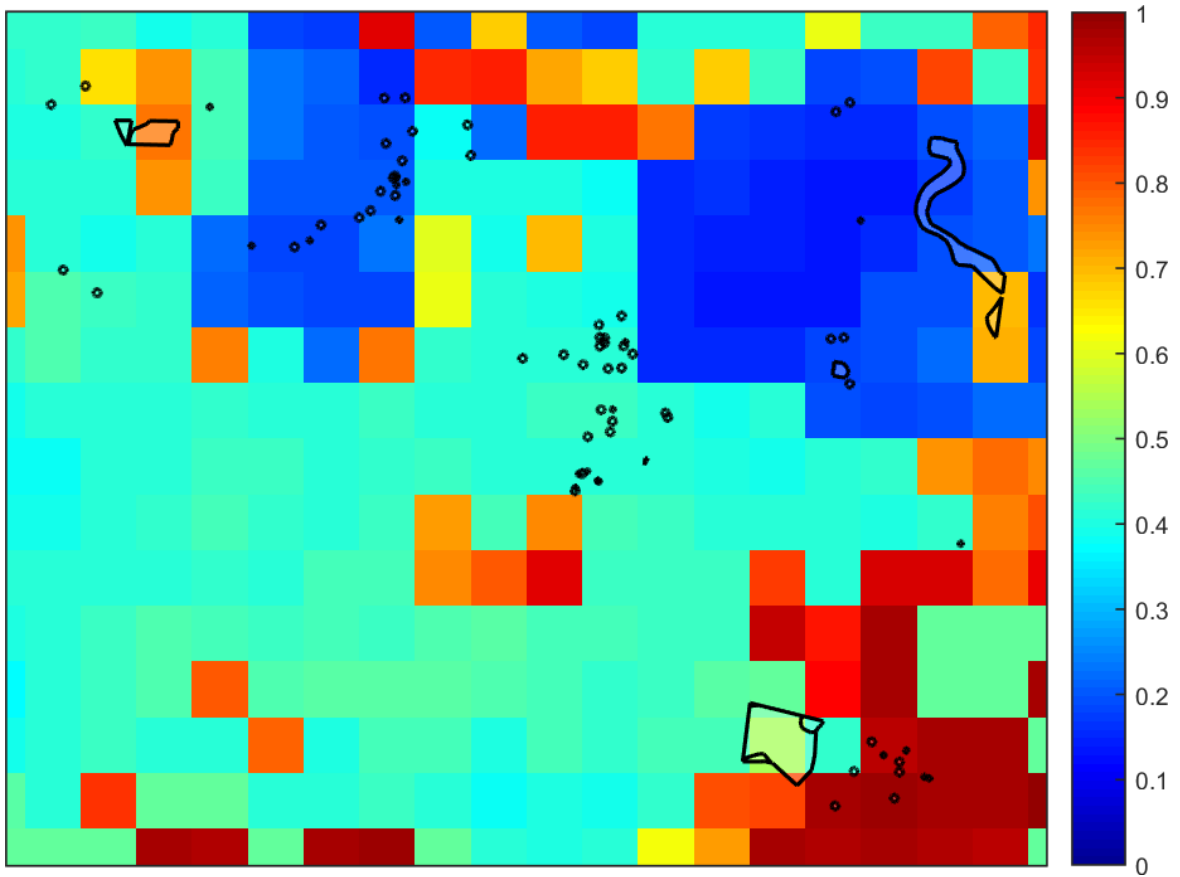
- Habitat importance maps are the maps defined in the Guidelines that include all the mapped habitat for a rare or threatened species
- Top ranking maps are the maps defined in the Guidelines that depict the important areas of a dispersed species habitat, developed from the highest habitat importance scores in dispersed species habitat maps and selected VBA records
- Selected VBA record is an area in Victoria that represents a large population, roosting or breeding site etc.

**ADVERTISED  
PLAN**

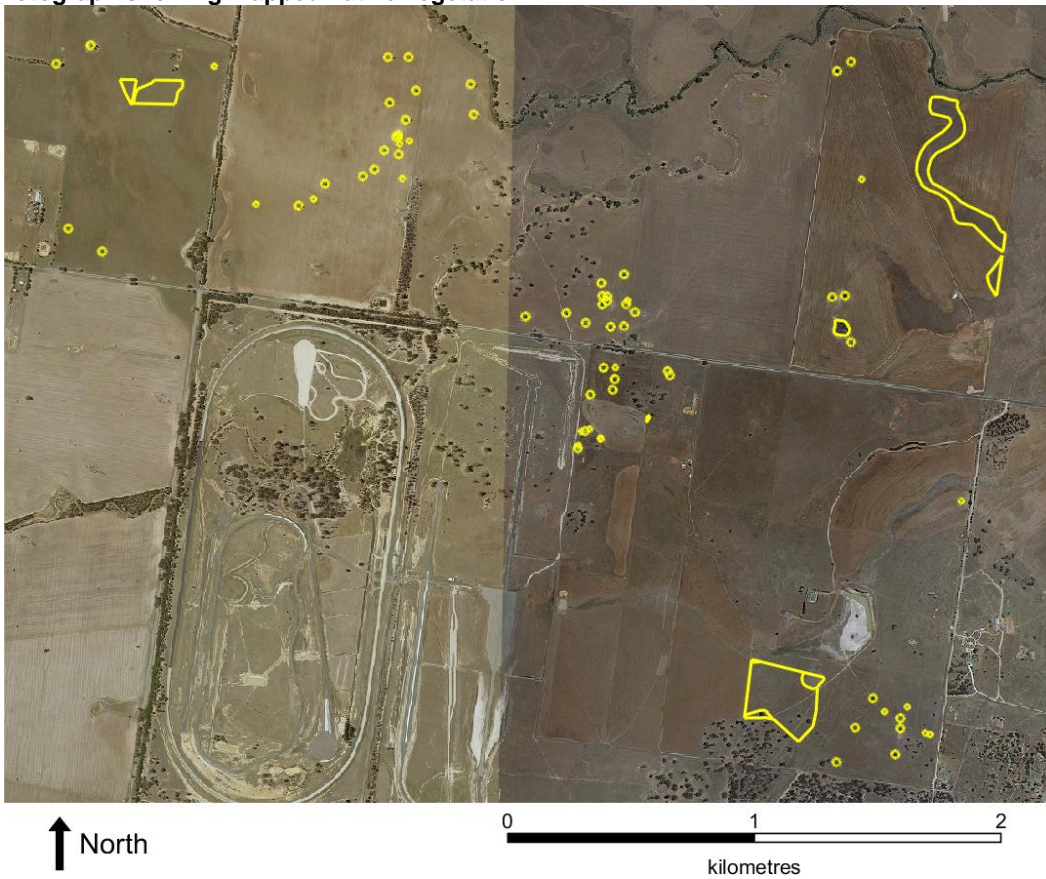
# ADVERTISED PLAN

## Appendix 3 – Images of mapped native vegetation

### 2. Strategic biodiversity values map

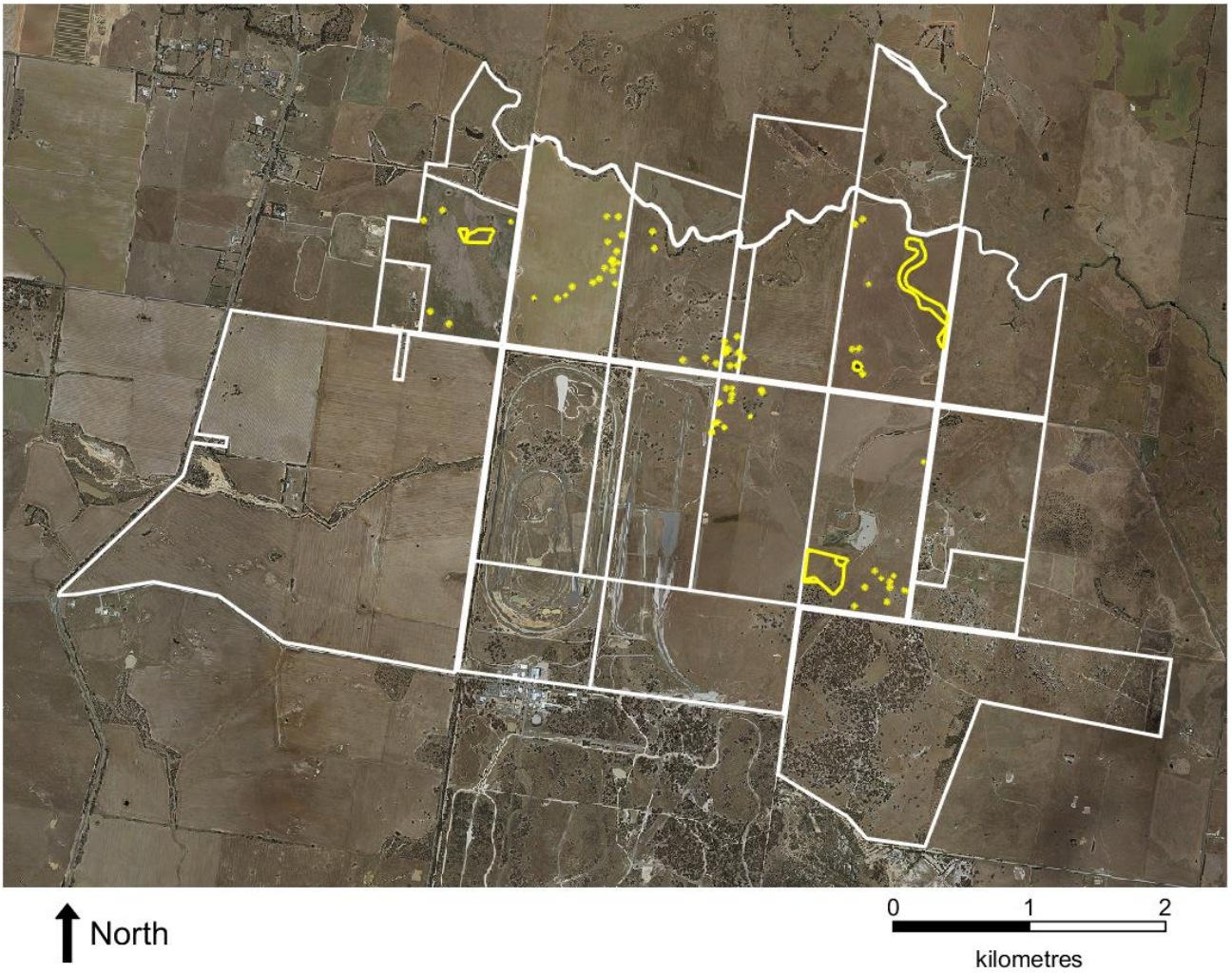


### 3. Aerial photograph showing mapped native vegetation





#### 4. Map of the property in context



Yellow boundaries denote areas of proposed native vegetation removal.

**ADVERTISED  
PLAN**