

ADVERTISED PLAN



Barwon Solar Farm,
Mt. Rothwell:
Cultural Heritage
Management Plan 18474

CHMP Standard
Assessment Results

CHMP

18474

Sponsor

Elgin Energy Pty Ltd
(ABN: 95 629 627 416)

**ADVERTISED
PLAN**

Registered Aboriginal Party

The appointed RAP for lands including the activity area is the Wadawurrung Traditional Owner Aboriginal Corporation (WTOAC)

Activity Area

The activity area is located within the township of Little River within the City of Greater Geelong and comprises 10 land parcels spanning between the Little River waterway in the north, Travellers Way Road in the south, Mount Rothwell Road in the east and private property boundaries in the west. The activity area covers a total area of 765 ha (7,651,771 m²).

THE CHMP activity area is classified as large.

Proposed Activity

- Installation of solar panels
 - Driven support poles
 - Trenching for electrical conduit
 - Soils to remain on-site
- Substations
- Access-ways
- Ancillary structures



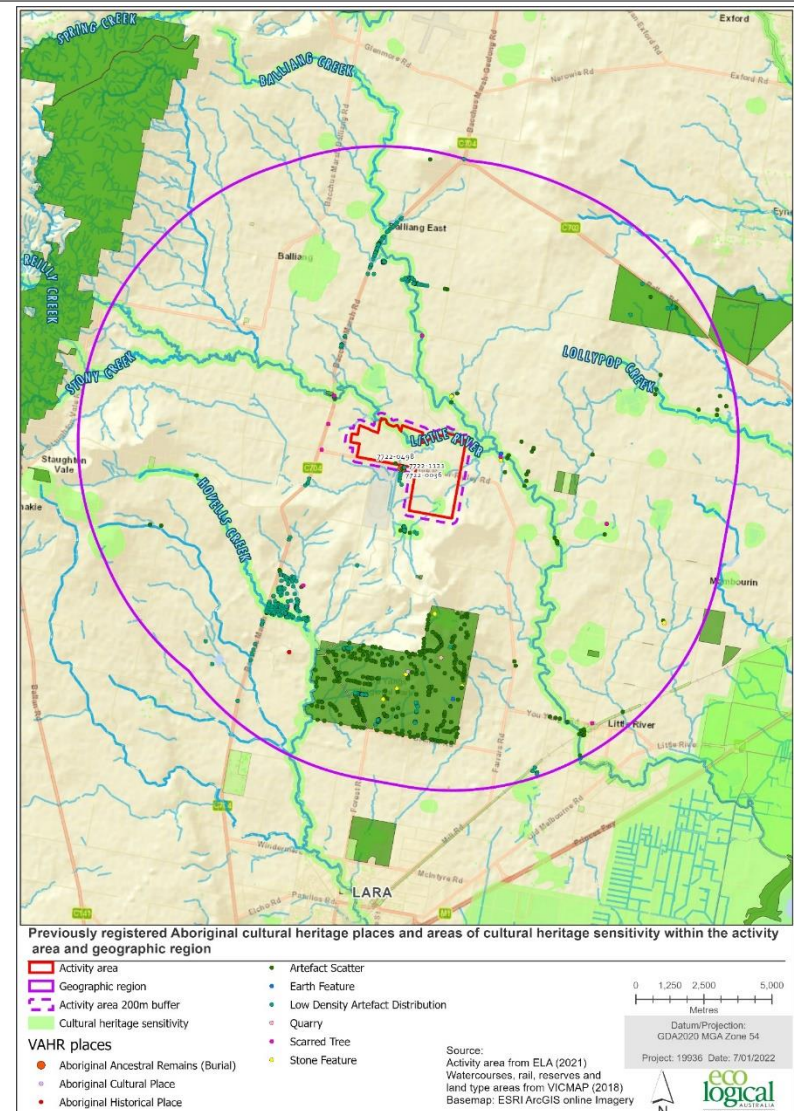
ADVERTISED PLAN



Outcomes of Desktop Assessment

- The activity area is situated within the Western Plains geomorphological unit and located within a volcanic plain landform, intersected by Sandy Creek and Little River.
- Geological substrates: Newer Volcanic Group-Basalt Flows, Granite-derived Colluvium (Qc4), You Yangs Granite and Alluviums
- A total of 405 registered Aboriginal cultural heritage places are located within the geographic region, which was defined as a 10 km buffer around the activity area.
- The activity area has been farmed for crops and grazed by stock for the past 170 years.
- Localised impacts have included the construction of dams, access roads, sheds and residences. Two overhead transmission line easements also run through the activity area.
- One previously registered Aboriginal cultural heritage place is located within the activity area: VAHR 7722-0498 (FORD 1): a surface stone artefact scatter.

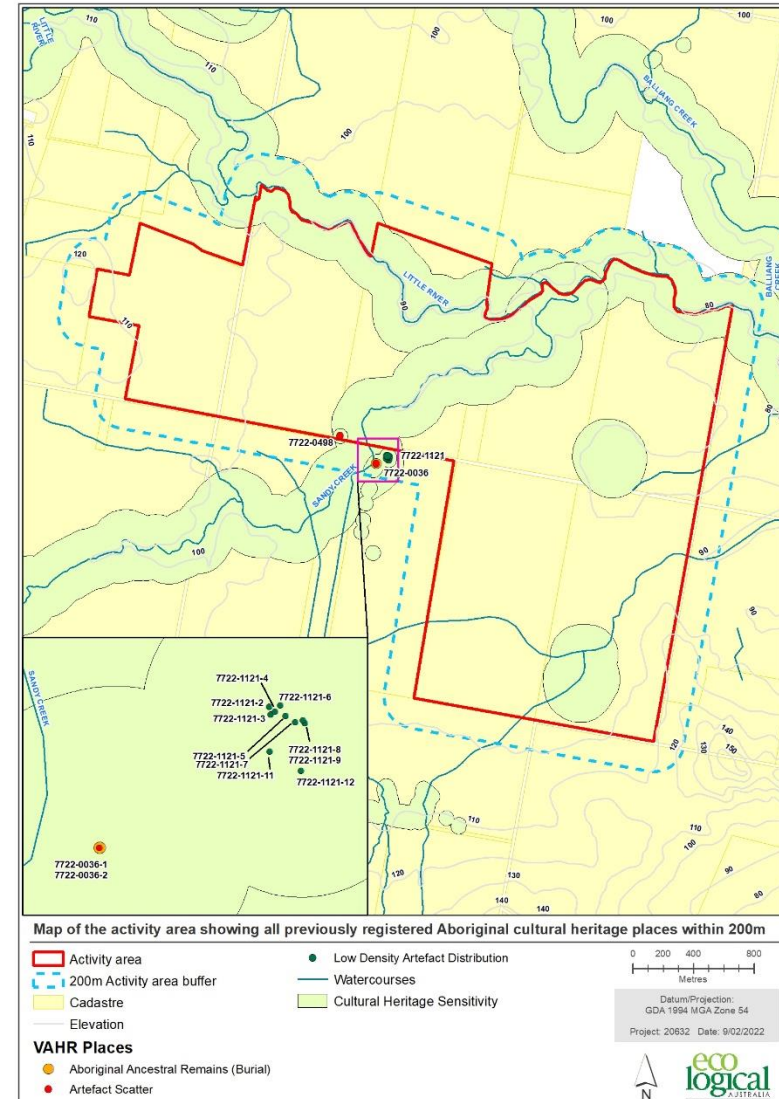
**ADVERTISED
PLAN**



Outcomes of Desktop Assessment

- A further six Aboriginal cultural heritage places are also located within 200 m of the activity area boundary, including a multicomponent place, VAHR 7722-0036 (Aboriginal Ancestral Remains (Burial))
- Artefact scatters and LDADs make up 93% of these places. Scarred trees, stone features, earth features, Aboriginal Ancestral Remains are also represented within the geographic region.
- Registered places cluster along major, small and ephemeral water ways in the region, including Little River. A significant proportion of registered places are also located in the granite outcrops of the You Yangs.
- Artefact scatters range in density from isolated to low on the volcanic plain, and generally increase in density in relation to their proximity to waterways and water sources.

**ADVERTISED
PLAN**



Aims of Standard Assessment

A standard assessment must include a ground survey of all or part of the activity area to detect the presence of Aboriginal cultural heritage in or associated with the activity area (Regulation 63 of the Regulations)

Aims of the standard assessment were to:

- Inspect areas with ground surface visibility for Aboriginal archaeological sites within the activity area.
- Undertake a general assessment of the overall archaeological potential of the activity area.
- Inspect all previously registered Aboriginal cultural heritage places within the activity area.
 - VAHR 7722-0498 (FORD1): Artefact Scatter.
- Auger program to understand the soil profile of land surfaces approaching Sandy Creek.

**ADVERTISED
PLAN**

9-day survey (15-16, 18 and 21-25 March 2022)

- Team of six (three archaeologists and three WTOAC representatives).

The assessment included a foot-survey using a combination of

- Survey of areas of archaeological potential identified in desktop assessment:
 - Surfaces along watercourses
 - Exposures and outcrops on Granite hill landforms
- Pedestrian transects undertaken across broad landforms:
 - Flood plain
 - Volcanic plain
 - Stony outcrops
- Systematic inspection of all identified exposures
- Examination of all mature indigenous trees.
- Checked for the presence of caves and rock shelters.
- Excavation of 26 manual auger probes

**ADVERTISED
PLAN**

9-day survey (15-16, 18 and 21-25 March 2022)

- Team of six (three archaeologists and three WTOAC representatives).

The assessment included a foot-survey using a combination of

- Survey of areas of archaeological potential identified in desktop assessment:
 - Surfaces along watercourses
 - Exposures and outcrops on Granite hill landforms
- Pedestrian transects undertaken across broad landforms:
 - Flood plain
 - Volcanic plain
 - Stony outcrops
- Systematic inspection of all identified exposures
- Examination of all mature indigenous trees.
- Checked for the presence of caves and rock shelters.
- Excavation of 26 manual auger probes

**ADVERTISED
PLAN**

Results of Standard Assessment

**ADVERTISED
PLAN**

The activity area was separated into nine Investigation Areas (IAs) based on the identification of landforms during the standard assessment as follows:

IA-1 – Volcanic Plains, 490 ha (64%)

IA-2 – Drainage Lines, 20 ha (2.6%)

IA-3 – Granite Hills, 34 ha (4.4%)

IA-4 – Flood Plains, 89 ha (11.6%)

IA-5 – Stony Outcrops, 100 ha (13%)

IA-6 – Terraces

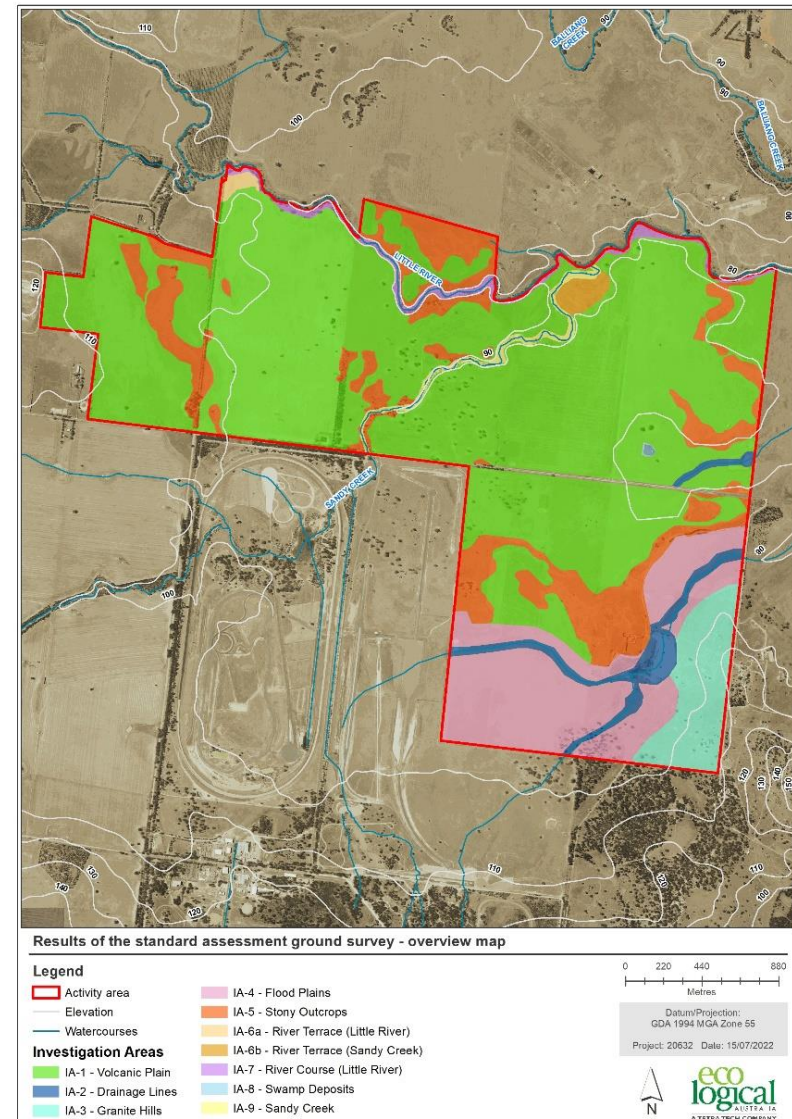
IA-6a – Little River Terrace, 3 ha (0.4%)

IA-6b – Sandy Creek Terrace, 4 ha (0.5%)

IA-7 – Little River, 12 ha (1.6%)

IA-8 – Swamp Deposits, 0.4 ha (0.05%)

IA-9 – Sandy Creek, 8 ha (1%)



Results of Standard Assessment

**ADVERTISED
PLAN**

839 stone artefacts

3 scarred trees

No caves, cave entrances or rock shelters were identified.

IA-1 – Volcanic Plains, 227 stone artefacts

IA-2 – Drainage Lines, 9 stone artefacts

IA-3 – Granite Hills, 105 stone artefacts, 1 scarred tree

IA-4 – Flood Plains, 6 stone artefacts, 2 scarred trees

IA-5 – Stony Outcrops, 22 stone artefacts

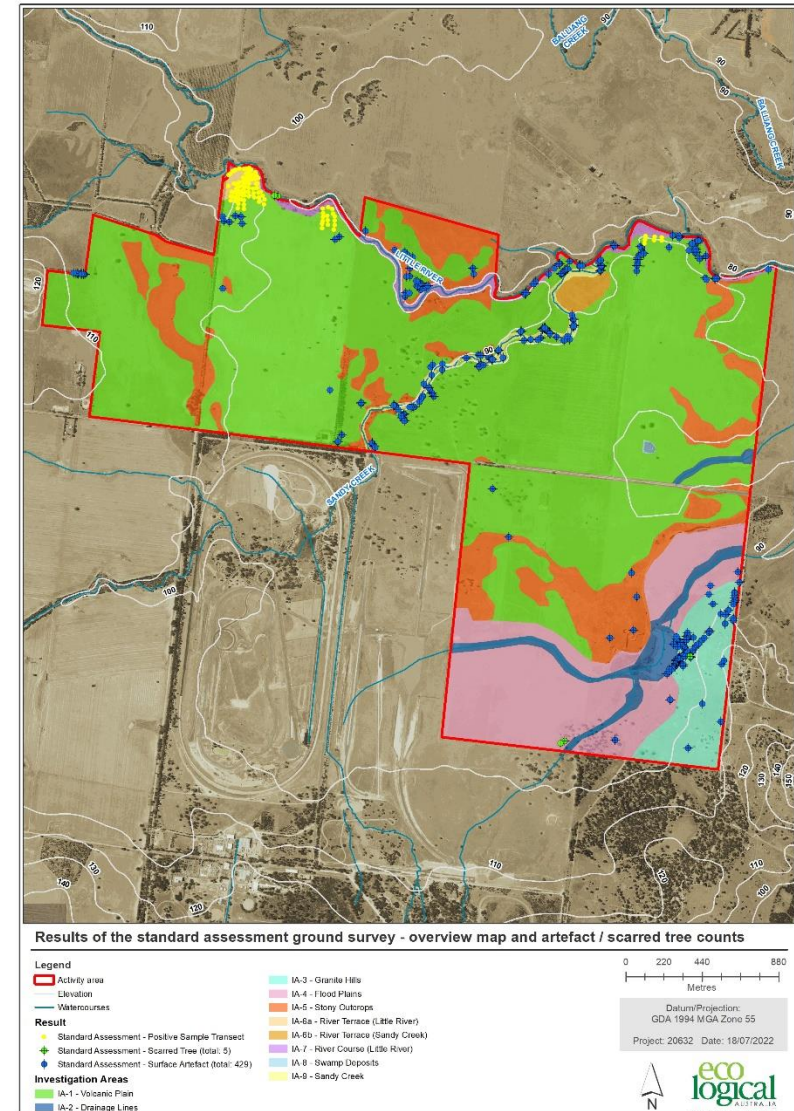
IA-6a – Little River Terrace, 340 stone artefacts

IA-6b – Sandy Creek Terrace, 0 stone artefacts

IA-7 – Little River, 46 stone artefacts

IA-8 – Swamp Deposits, 0 stone artefacts

IA-9 – Sandy Creek, 84 stone artefacts



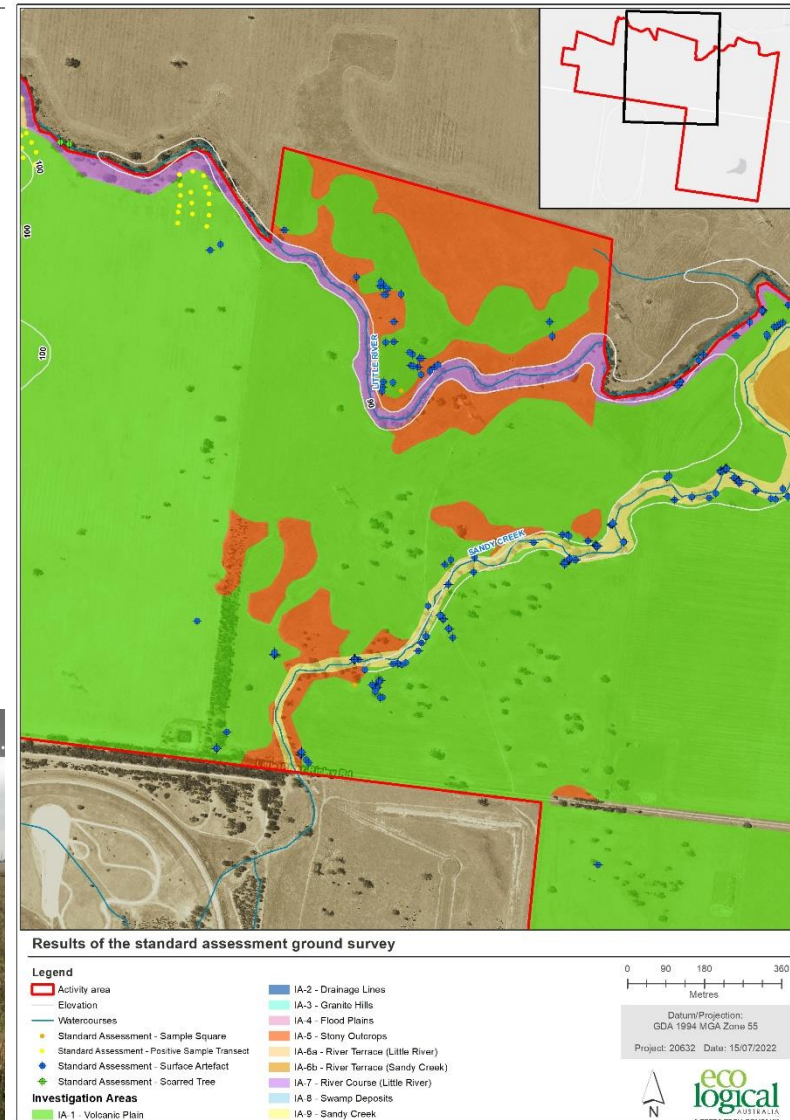
IA-1 Volcanic Plains

- 490 ha (64%).
- Moderate ground surface visibility.
- Exposures limited to areas of stock trampling, surrounding trees, proximity to watercourses.
- Disturbance: Ploughing, stock trampling, construction of dams, vehicle tracks, farming structures.

Artefacts:

Total 227 artefacts.

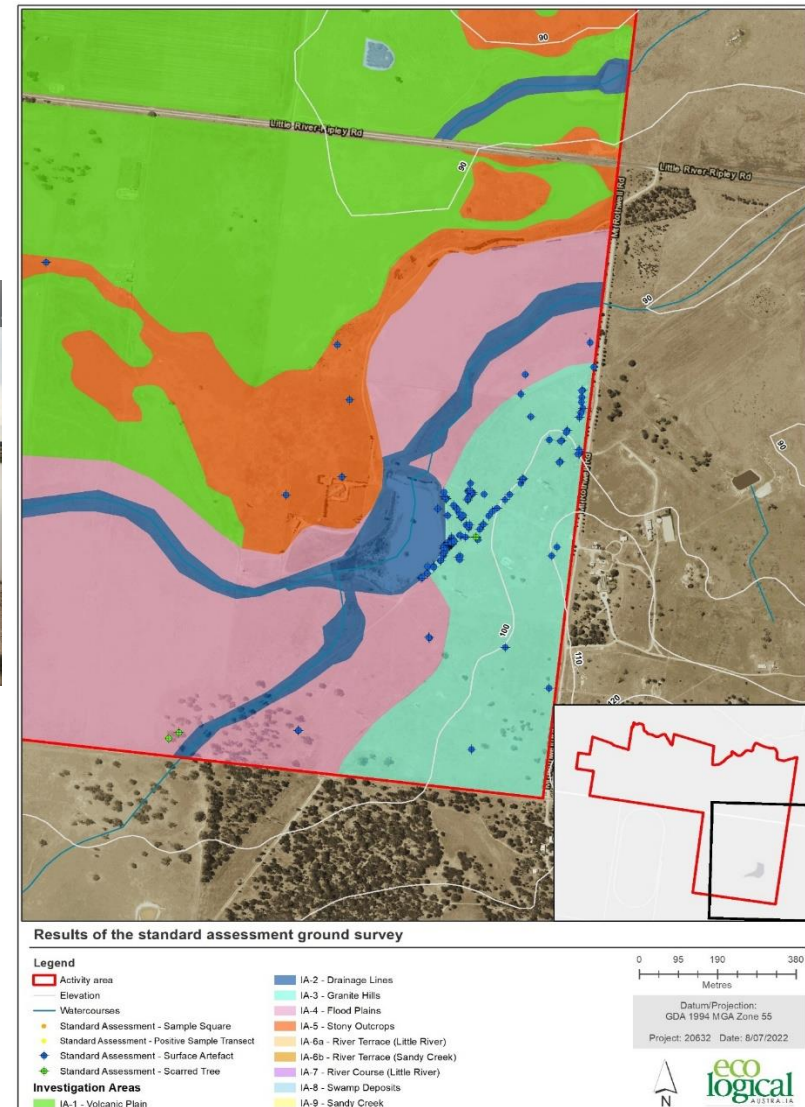
ADVERTISED
PLAN



IA-2 Drainage Lines

ADVERTISED PLAN

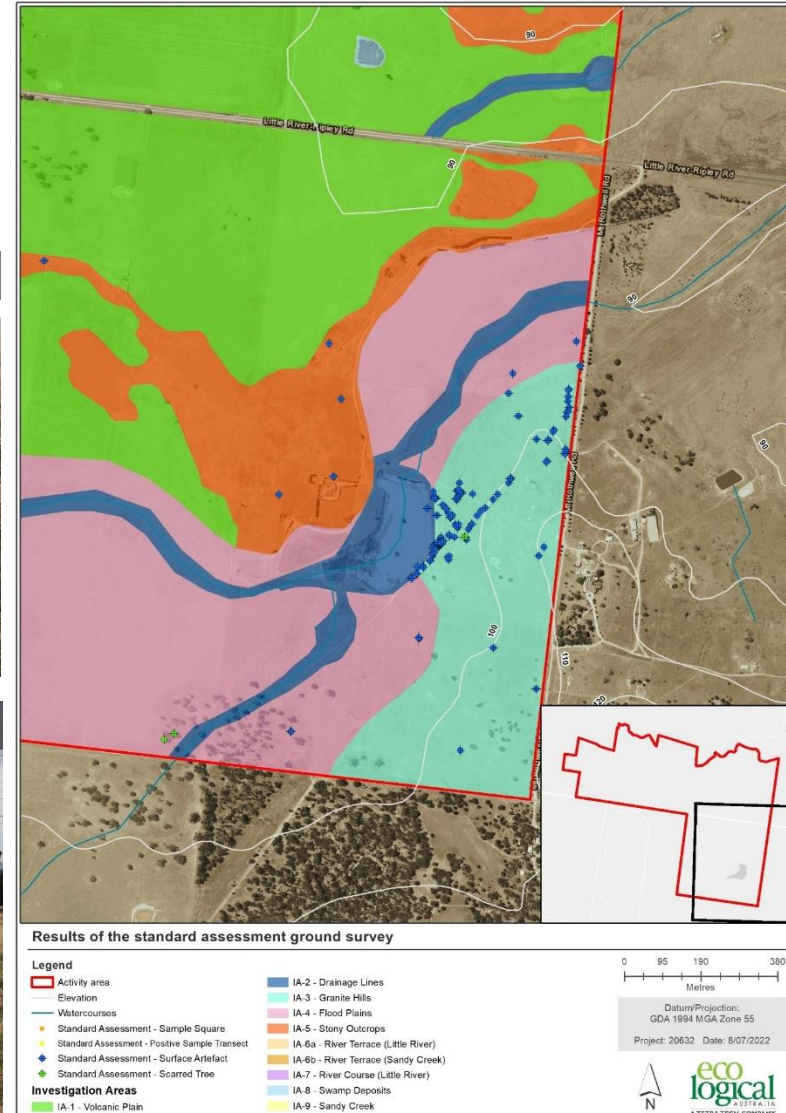
- 20 ha (2.6%)
- Disturbance- ploughing, stock trampling, construction of dams
- Poor ground surface visibility with exception of areas of disturbance (dam walls, vehicle track)
- Artefacts: 9 stone artefacts identified near dam



IA-3 Granite Hills

ADVERTISED PLAN

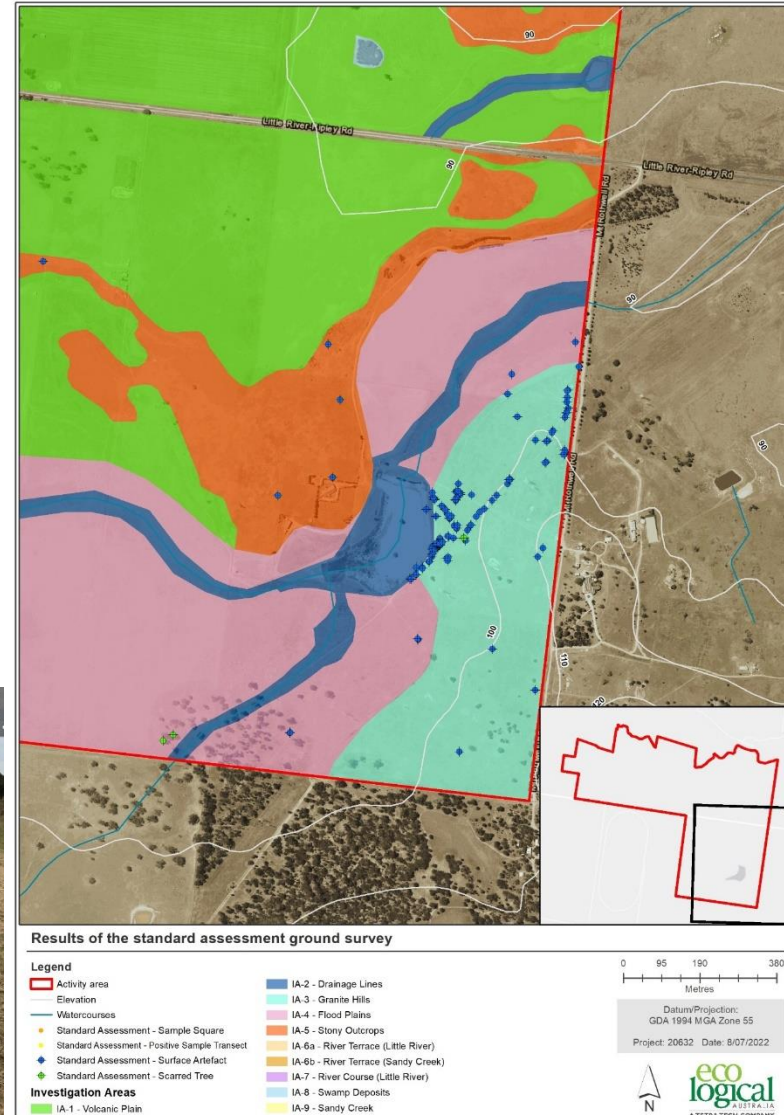
- 34 ha (4.4%)
- Poor ground surface visibility: 1%
- One Scarred Tree identified
- 105 stone artefacts identified on exposures surrounding outcrops



IA-4 Flood Plains

ADVERTISED PLAN

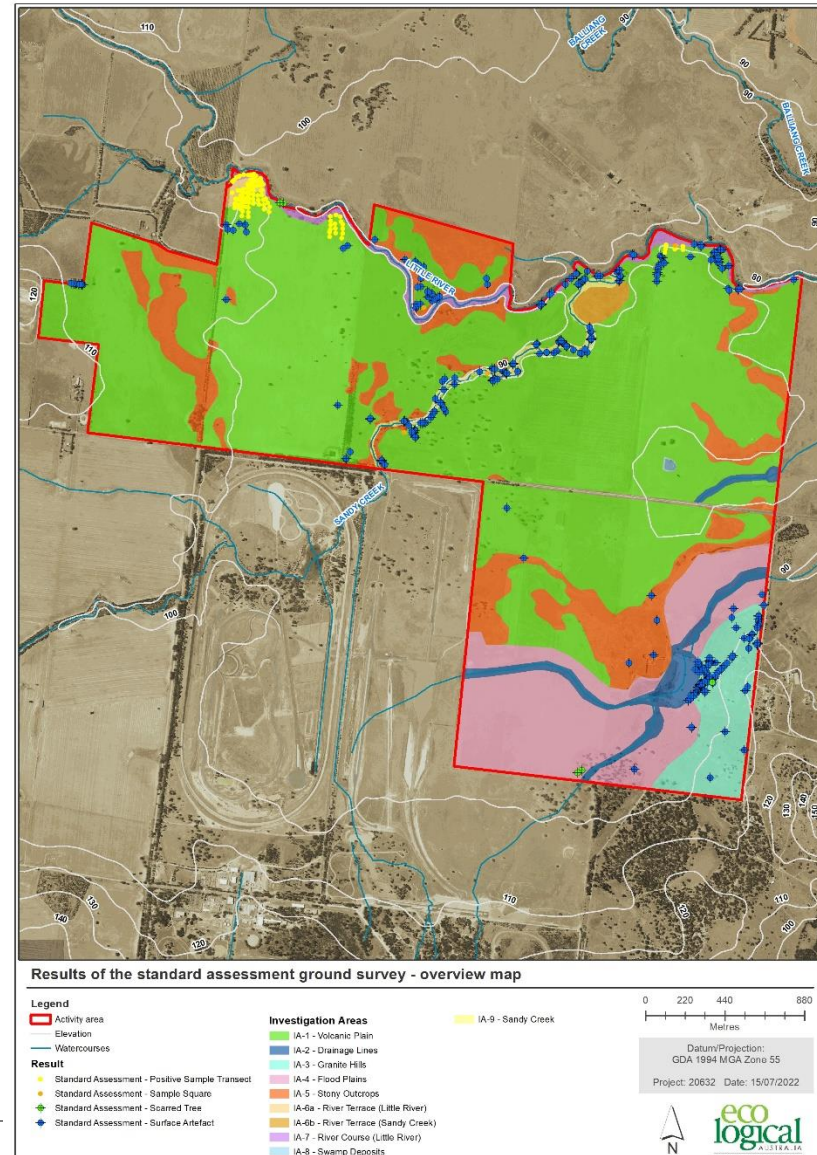
- 89 ha (11.6%)
- Poor ground surface visibility (0.9%)
- Disturbance minimal – ploughing, stock trampling, informal vehicle tracks
- 6 stone artefacts identified
- 2 Scarred Trees



IA-5 Stony Outcrops

- 100 ha (13. %)
- Poor/ no ground surface visibility
- Little ground disturbance/ development
- 22 stone artefacts identified, primarily in the vicinity of Sandy Creek or Little River

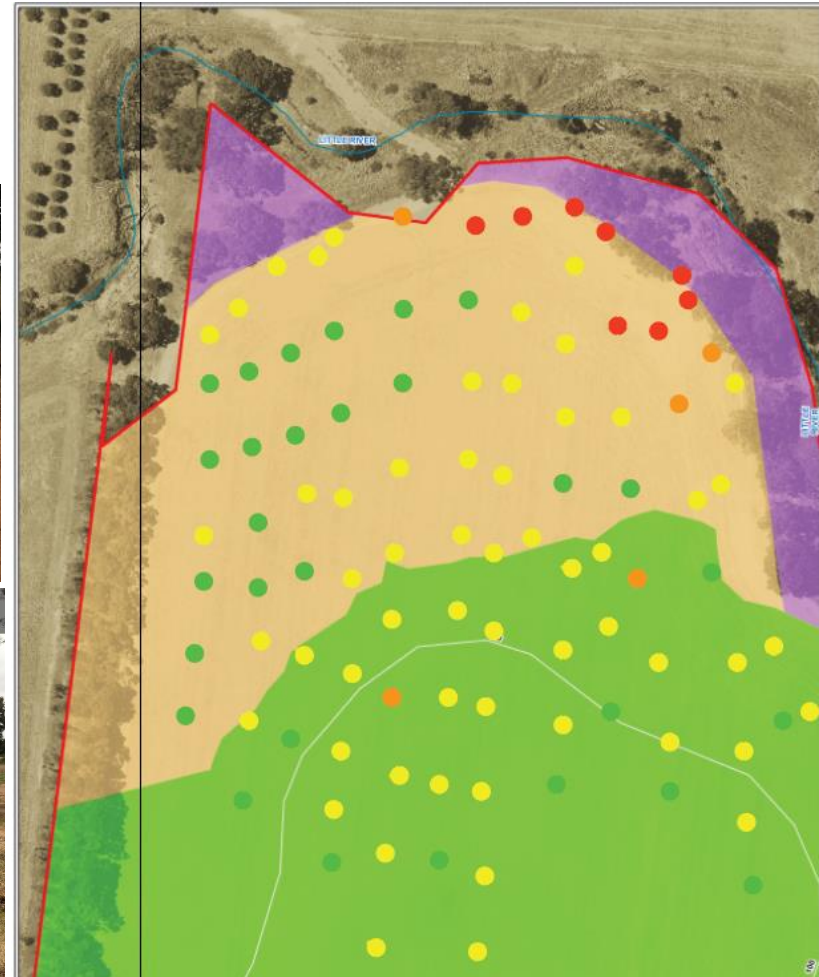
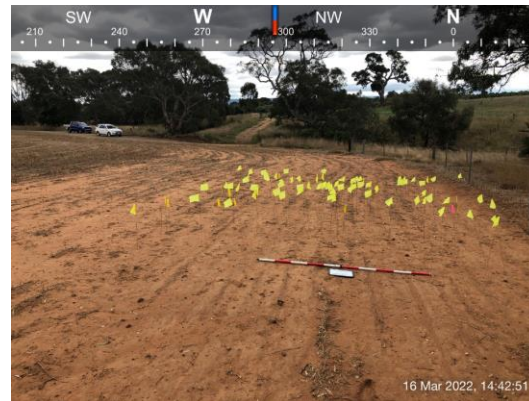
ADVERTISED
PLAN



IA-6a Little River Terrace

- 3.0 ha (0.4%)
- Moderate surface visibility (48%)
- Ploughing/ cropping, informal vehicle track surface erosion
- Artefacts: 340

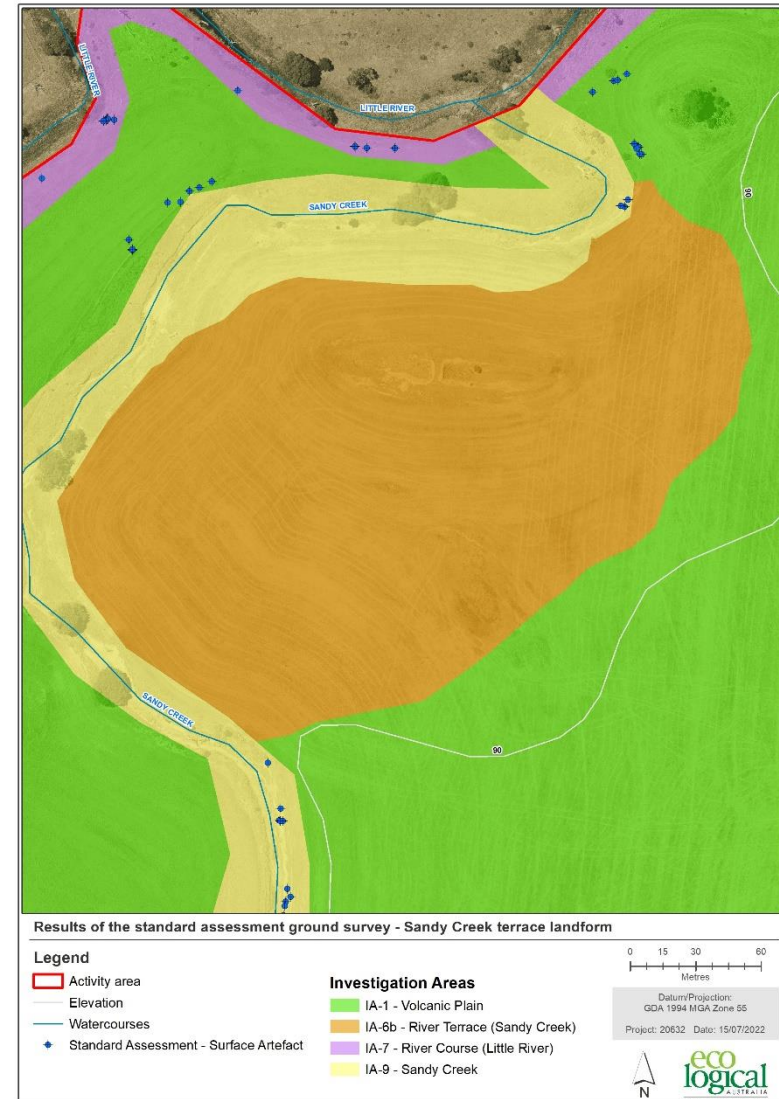
ADVERTISED
PLAN



IA-6b Sandy Creek Terrace

- 4.0 ha (0.5%)
- Poor surface visibility (1%)
- Ploughing/ cropping, excavated open pit used as rubbish dump
- No stone artefacts identified

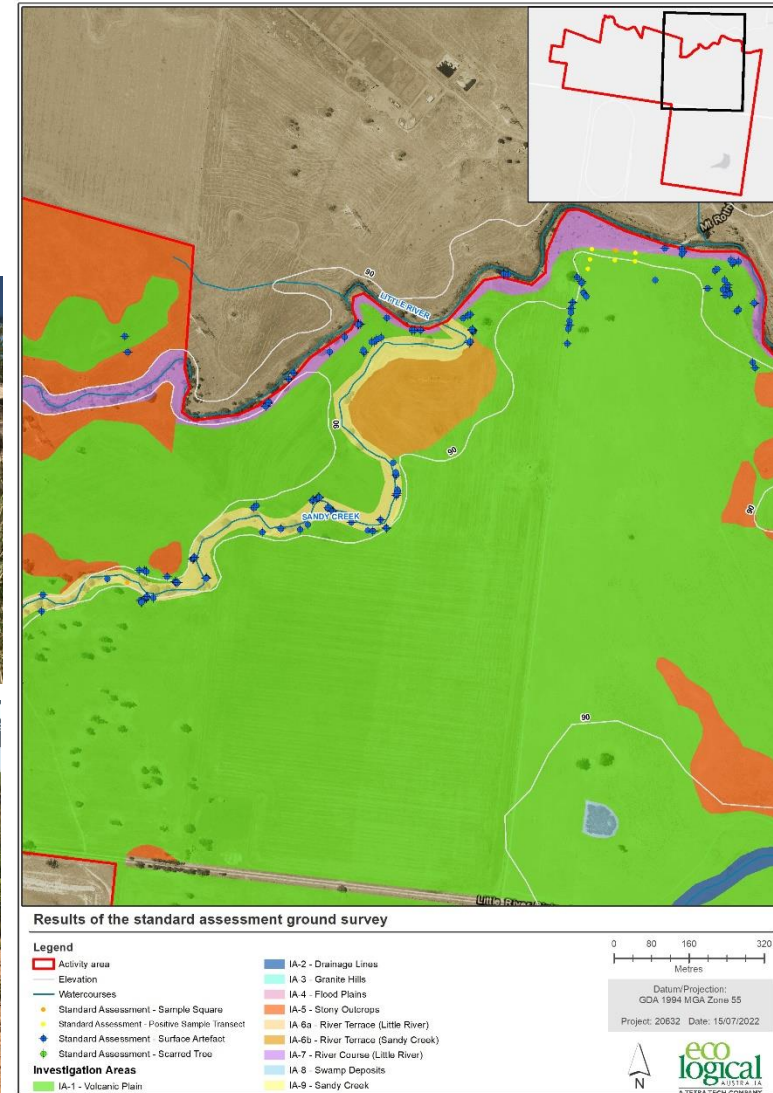
ADVERTISED PLAN



IA-7 Little River

- 12 ha (1.6%)
- Poor surface visibility (2%)
- Construction of two informal river crossings
- 46 stone artefacts identified along river corridor

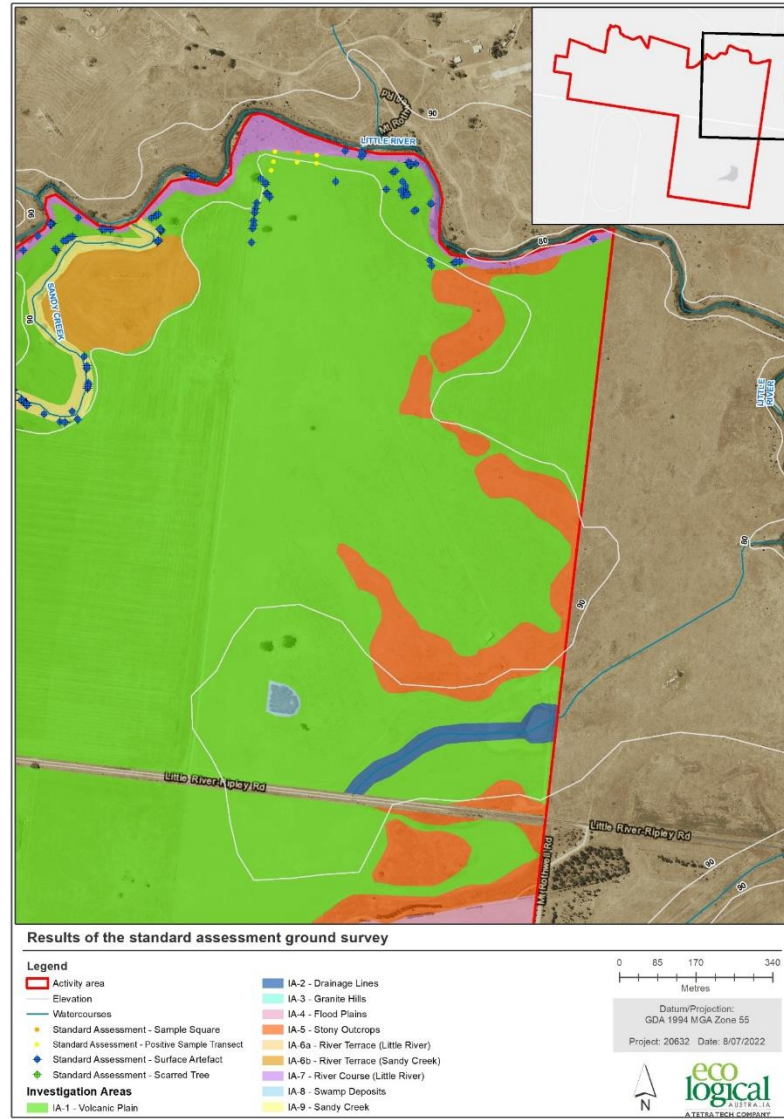
ADVERTISED
PLAN



IA-8 Swamp deposits

- 0.4 ha (0.05%)
- Moderate surface visibility (9%)
- Stock trampling
- No stone artefacts identified

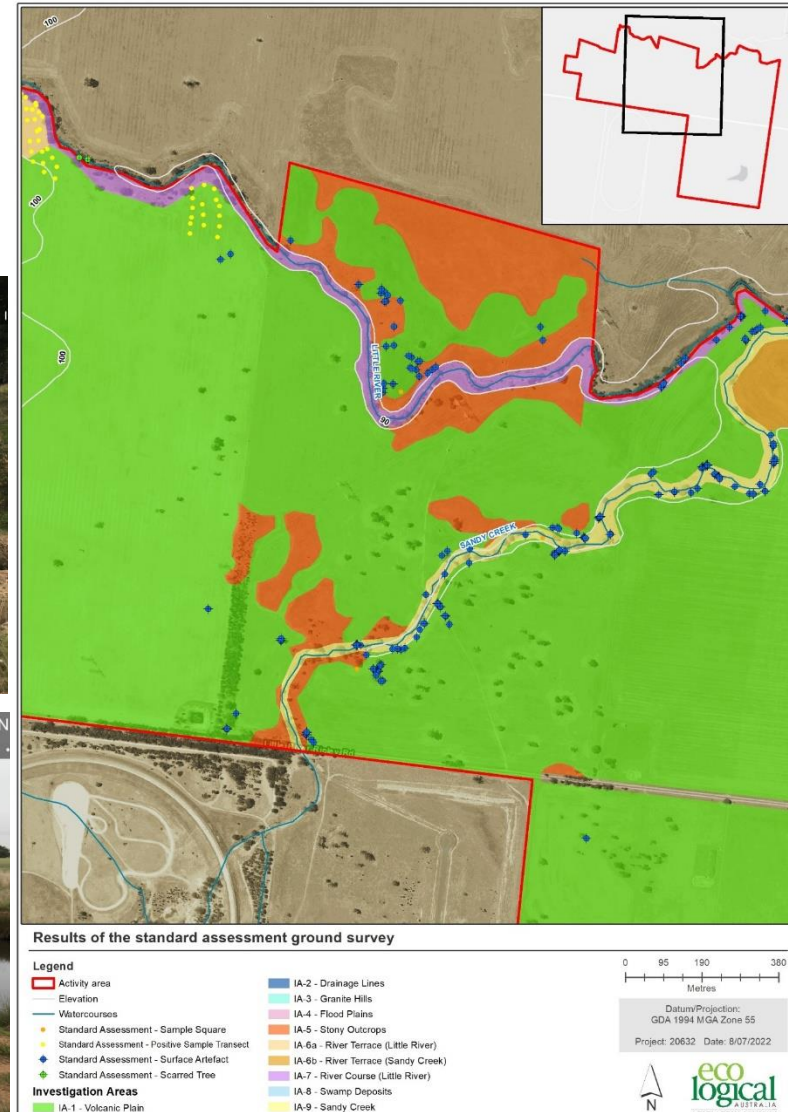
ADVERTISED
PLAN



IA-9 Sandy Creek

- 8 ha (1%)
- Moderate surface visibility (9%)
- Stock trampling, erosion, informal vehicle crossing
- 84 stone artefacts identified

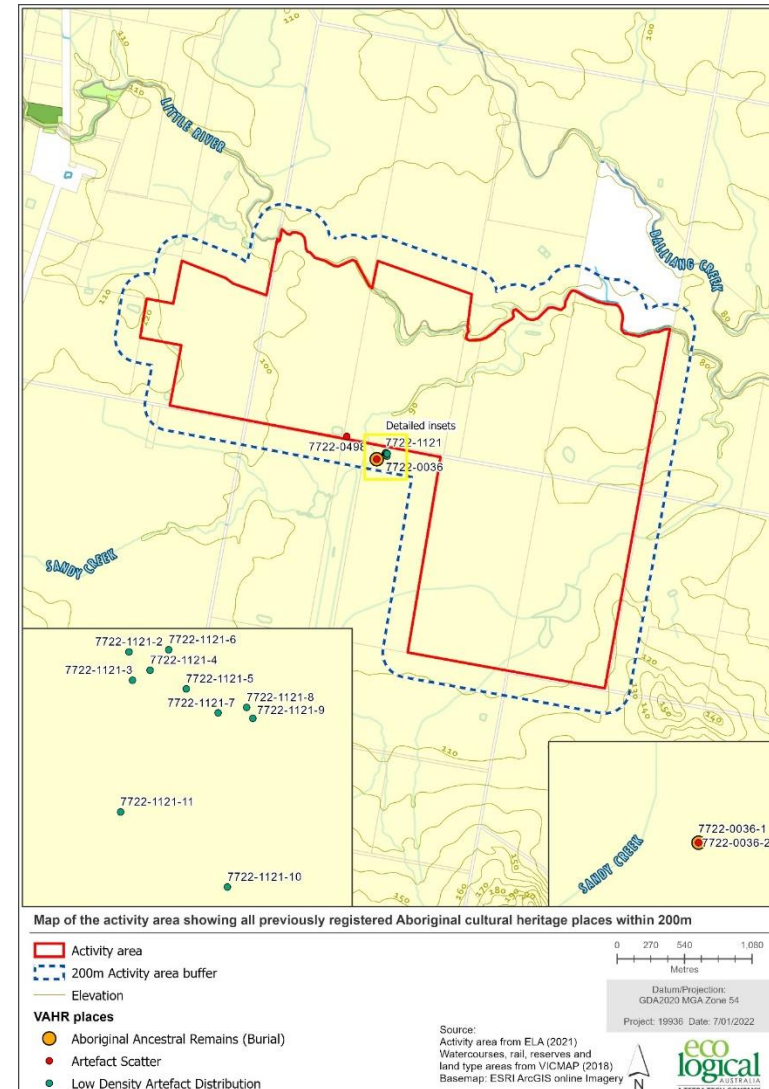
**ADVERTISED
PLAN**



Site Inspection VAHR place 7722-0498

- The location of registered place 7722-0498 (FORD1) was inspected as part of the Standard Assessment.
- Four flaked quartz artefacts were identified in proximity to the primary coordinate for this registered place.

ADVERTISED PLAN



Auger Program

ADVERTISED PLAN

The stratigraphy observed across this transect is typical of a volcanic plain, with a soil profile of 250-400mm depth comprising brown silts transitioning to shallow clays. Sand content was noted in both the silt and clay stratigraphic layers in 3 of the 4 augers.

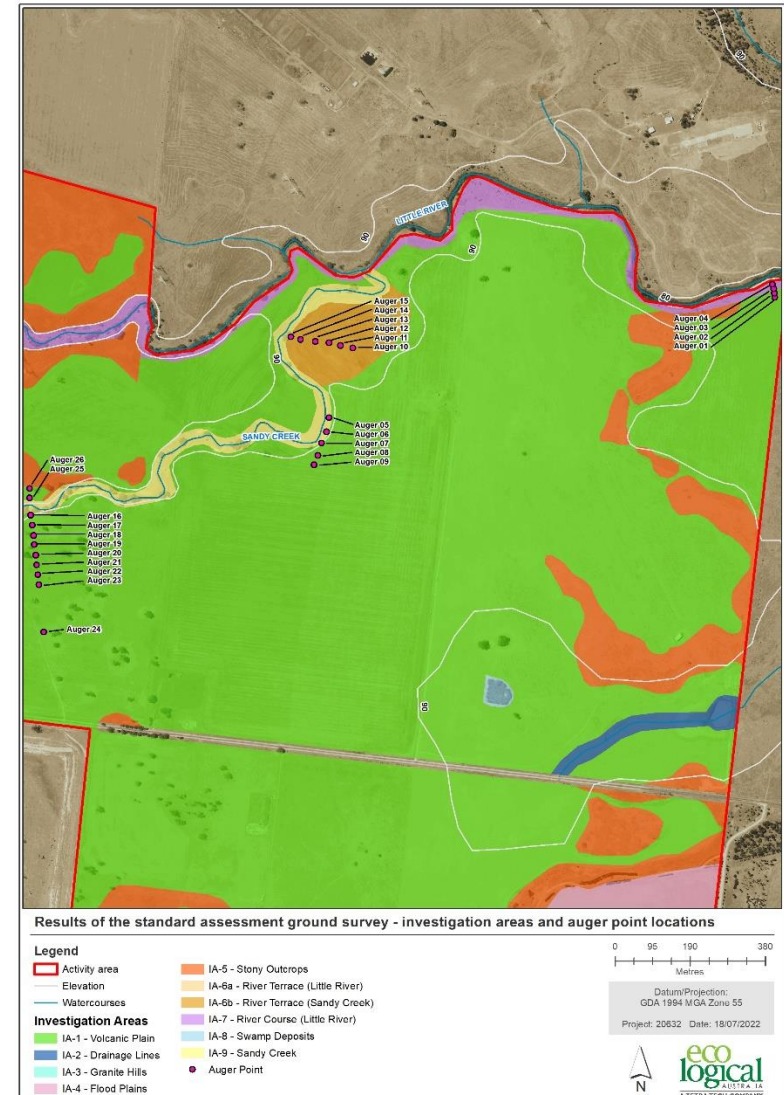
Augers 5, 6, and 7 were excavated in close proximity to the watercourse and had a relatively shallow depth (250-400mm). The stratigraphy transitioned to a very shallow volcanic soil profile in augers 8 and 9. These probes contained clayey silt over clay at 100-150mm depth, although some sand content was present in Auger 9.

Augers 10-15 revealed a shallow volcanic soil profile within the eastern portion of the landform (Augers 10, 11) that transitioned to a deeper profile of sandy silts and sands within the centre and western portion of the terrace landform (Augers 12-15).

The sandier profile was evident between 400 and 800mm depth and was predominately of a weak consistency, with relatively alkaline pH levels and overlay a mottled sandy clay.

The soil augers suggest that these sandy deposits extend approximately 130m off the bank of Sandy Creek and into the terrace before transitioning to a profile representative of the volcanics plains.

Augers 16 – 26 were excavated along a N-S transect extending from the volcanic plains and across Sandy Creek. Augers 21-24 comprised a silt profile overlaying shallow clays at 200-300mm depth. Auger 20, approximately 150m off the watercourse revealed a soil profile of 600mm depth with sand content amongst silts and clays. The profile was generally deeper from this location to the watercourse, with sand content consistent within silt and clay deposits. Augers 25 and 26 contained a considerably deep and sandy soil profiles reaching 1,500mm in depth.



Artefact Summary

IA	Landform	Artefacts present	Scarred Trees	Number of stone artefacts identified	% of stone artefact assemblage
1	Volcanic plain	Y		227	27
2	Drainage Lines	Y		9	1
3	Granite hills	Y	1	105	13
4	Flood Plains	Y	2	6	1
5	Stony Outcrops	Y		22	3
6a	Little River Terrace	Y		340	40
6b	Sandy Creek Terrace	N		0	0
7	Little River	Y		46	5
8	Swamp deposits	N		0	0
9	Sandy Creek	Y		84	10
Total			3	839	100

427 artefacts identified between 0-50m from watercourses (51%)

153 artefacts identified between 50-100m from watercourses (18%)

63 artefacts identified between 100-150m from watercourses (8%)

196 artefacts identified more than 150m from watercourses (23%)

**ADVERTISED
PLAN**

Artefact Summary

**ADVERTISED
PLAN**

More than 150m from watercourses
23% of assemblage or 196 artefacts

IA-1 Vol. Plains	71 artefacts
IA-2 Drainage Lines	9 artefacts
IA-3 Granite Hills	105 artefacts
IA-4 Flood Plains	6 artefacts
IA-5 Stony Outcrops	5 artefacts

Within 150m of watercourses
77% of assemblage or 643 artefacts
18% of activity area

Within 100m from watercourses
68% of assemblage or 580 artefacts
Accounts for 9% activity area

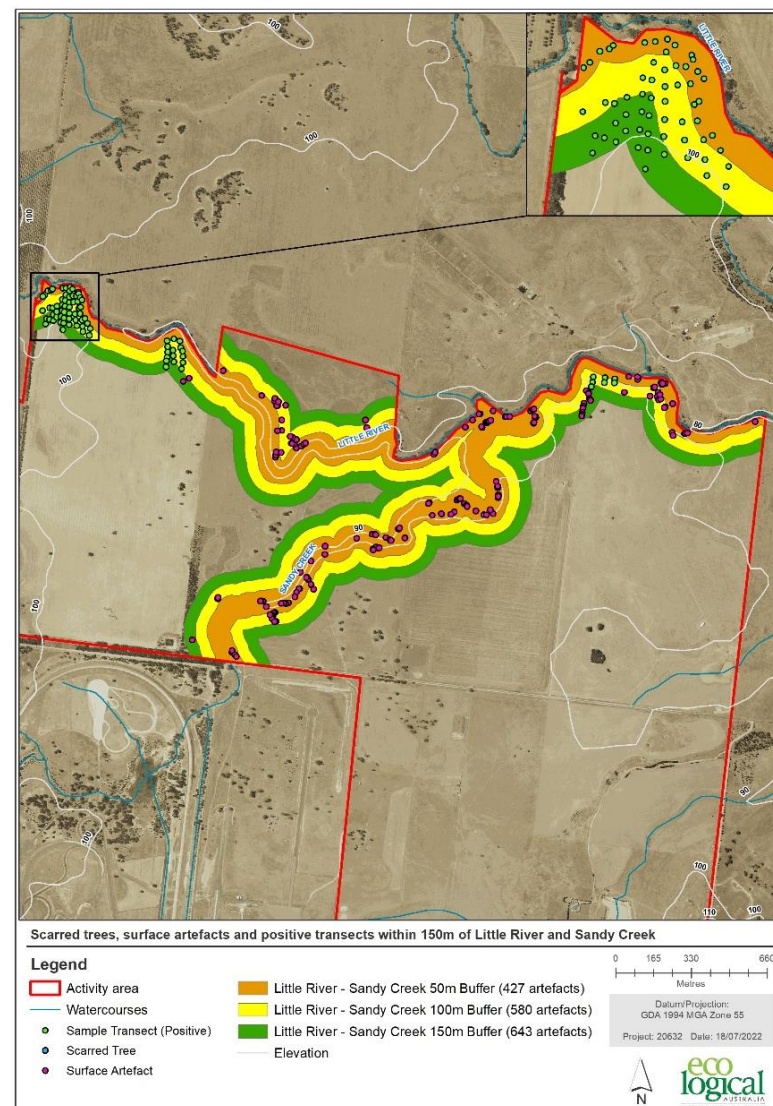
Within 50m from watercourses
51% of assemblage or 427 artefacts
Accounts for 4.5% activity area

Volcanic Plain: 227 artefacts

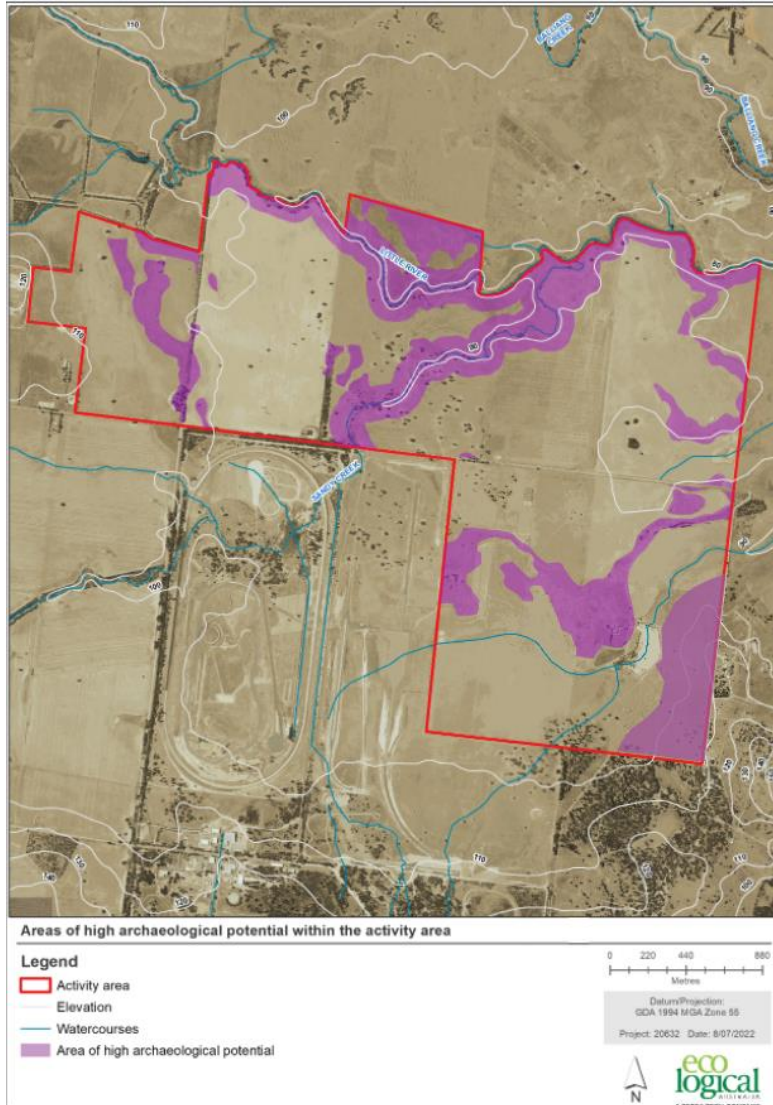
156 within 150m

48 between 150-200m

23 greater than 200m



Archaeological Potential



ADVERTISED PLAN

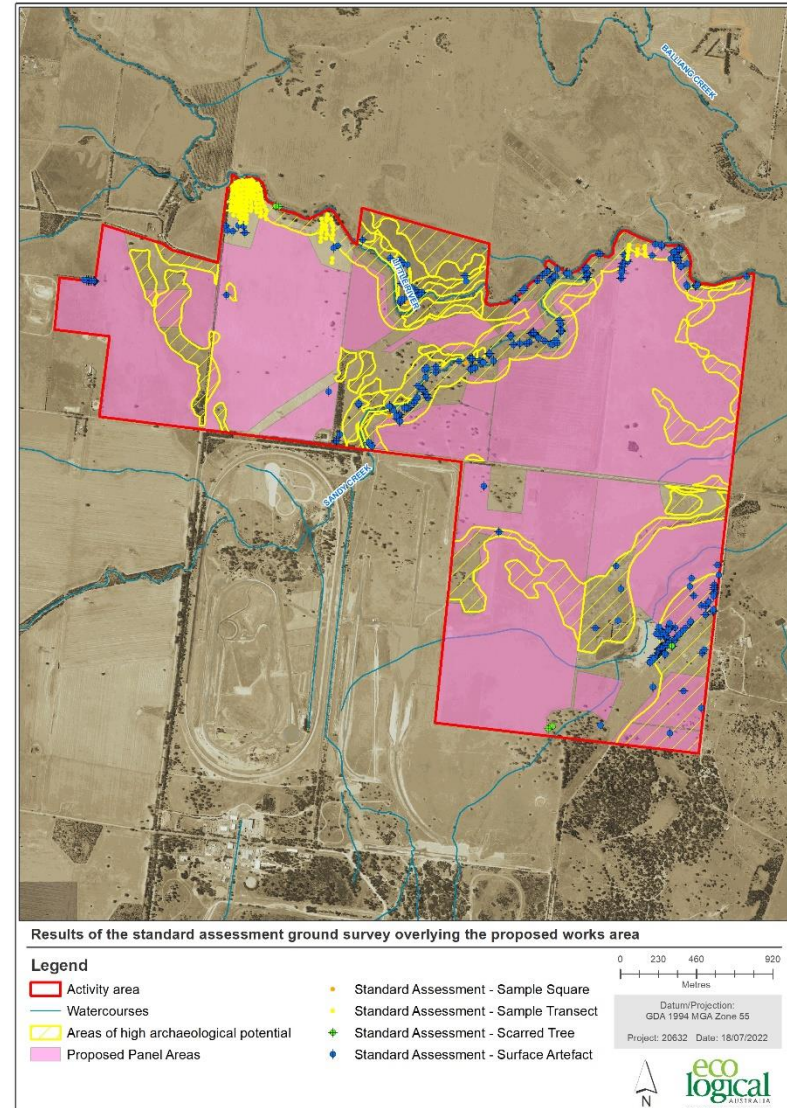
Investigation Area	Archaeological Sensitivity Rating	Disturbance Rating	APR
IA-1 Volcanic Plain <100m from watercourse	3	3	9
IA-1 Volcanic Plain >100m from watercourse	1	3	3
IA-2 Drainage Lines	2	2	4
IA-3 Granite Hills	3	3	9
IA-4 Flood Plains	1	3	3
IA-5 Stony Rise	3	3	9
IA-6a Little River terrace	3	3	9
IA-6b Sandy Creek terrace	3	3	9
IA-7 Little River	3	3	9
IA-8 Swamp Deposits	2	2	4
IA-9 Sandy Creek	3	3	9

Proposed Impacts

Harm avoidance to

- IA-6b Little River Terrace
- IA-7 Little River Corridor
- IA-8 Sandy Creek
- Variable offset from watercourses
- ~ 80% of artefacts identified during the standard assessment to be avoided

**ADVERTISED
PLAN**

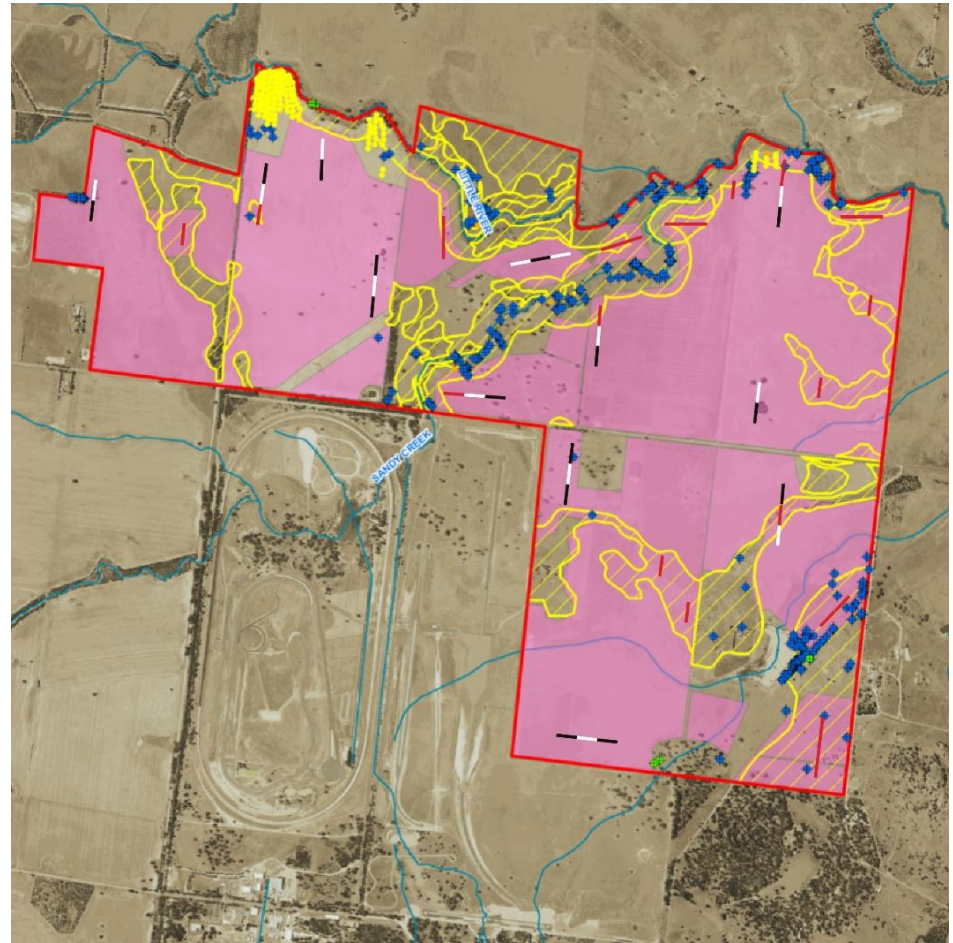
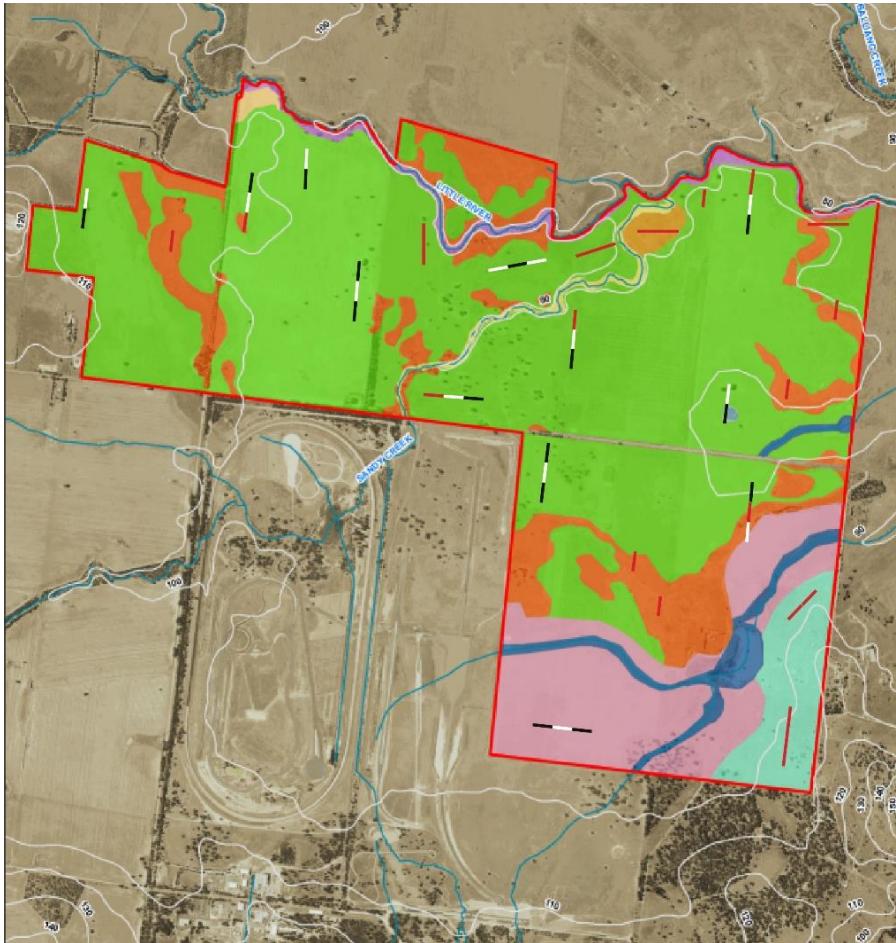


Complex Assessment Program

Landform	Proposed testing program	Outcome
<ul style="list-style-type: none"> Volcanic Plains within proximity to Sandy Creek and Little River Sandy Creek Terrace Granite Hills Stony Outcrops 	Testing strategy of <ul style="list-style-type: none"> 50 x 50cm STPs Excavated at 10m intervals along 24 100m along transects 1x1m test pits included across these 24 100m transects (one 1x1 each 100m) 	A total of <ul style="list-style-type: none"> 216 STPs 24 1x1m test pits Equating to 78m ²
<ul style="list-style-type: none"> Volcanic Plains – away from watercourses Floodplain Drainage Lines Swamp 	Testing strategy of <ul style="list-style-type: none"> 1x1 manual test pits 2x1 mechanical test trenches. Excavated at 100m intervals transects spaced across these landforms. Two 2x1m : One 1x1m ratio	A total of <ul style="list-style-type: none"> 12 1x1m test pits 24 2x1m mechanical trenches Equating to 60 m ²
		TOTAL 138m²

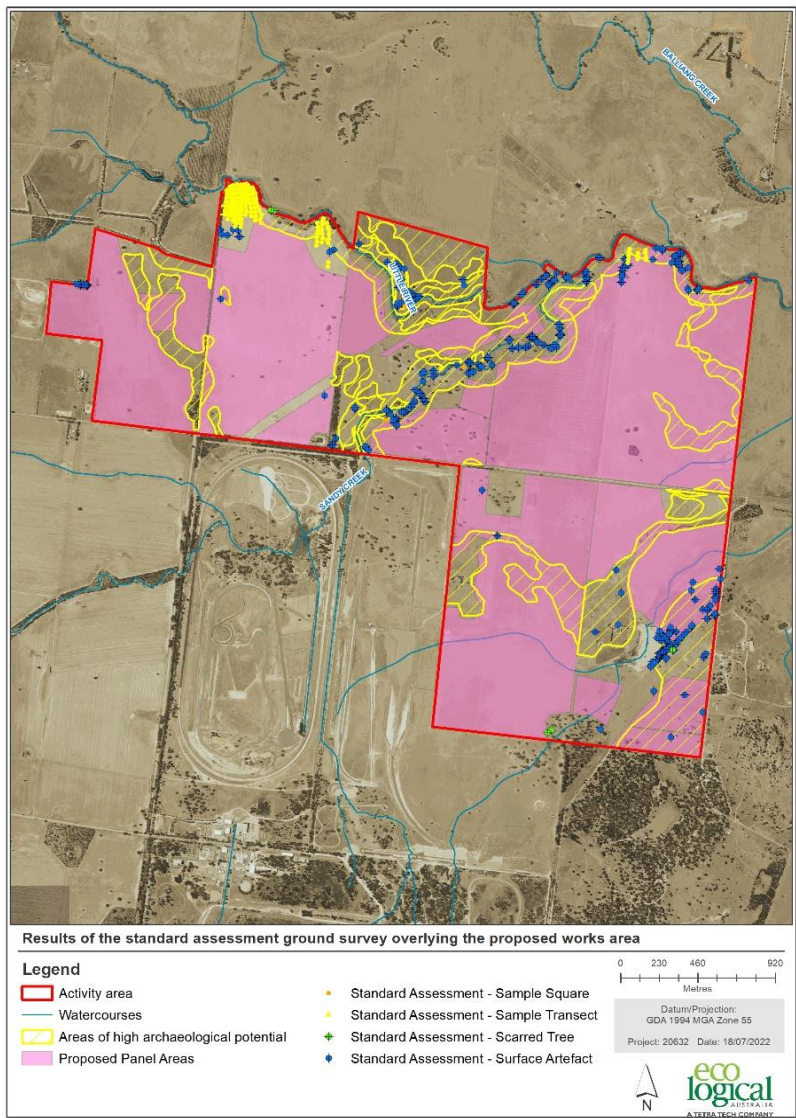
**ADVERTISED
PLAN**

Complex Assessment Program



**ADVERTISED
PLAN**

Complex Assessment Program



**ADVERTISED
PLAN**