

Notes  
 IMPORTANT NOTE RE CLARIFICATION:  
 Tenderers/Contractors are advised to contact this office to confirm/clarify any aspect of the works, incl. any details of the contract documents (incl. this plan) of which they are uncertain. No claim will be accepted on account of failure to do so. IF IN DOUBT ... ASK.

This plan shall be read in conjunction with the ACEnergy Pty Ltd Pine Lodge BESS drawings.

### ADVERTISED PLAN

Rev	Date	Revision Note	By
B	15/7/2024	Final revisions/adjustments	CW
A	8/7/2024	Fully updated to new D-BESS layout; Landscape adjusted to match.	CW

This copied document to be made available for the sole purpose of enabling its consideration and review as part of a planning process under the Planning and Environment Act 1987. The document must not be used for any purpose which may breach any copyright

Issue	Date	Issue Note	By
5	5/8/2024	REVISED APPROVAL ISSUE	CW
4	15/7/2024	REVISED APPROVAL ISSUE	CW
3	8/7/2024	REVISED APPROVAL ISSUE	CW
2	10/12/21	UPDATED APPROVAL ISSUE	CW
1	7/1/21	APPROVAL ISSUE	CW

Surveyors  
 —  
 eMail: —  
 Structural Engineer:  
 —  
 eMail: —  
 Consulting Engineer  
 —  
 eMail: —  
 Project Managers  
**ACEnergy Pty Ltd**  
 Mob: 0497 514 353 eMail: danny.w@acenergy.com.au  
 Other:  
 —  
 eMail: —  
 Proprietor

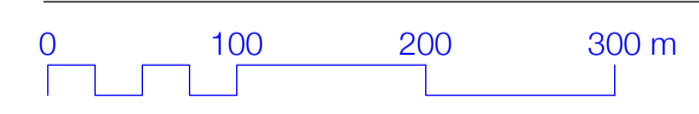


Project  
**Pine Lodge BESS**  
 910 Sidebottoms Road Pine Lodge Victoria

Drawing  
**Overview/Context Plan**

Sheet 1 of 4

Local Authority City of Greater Shepparton

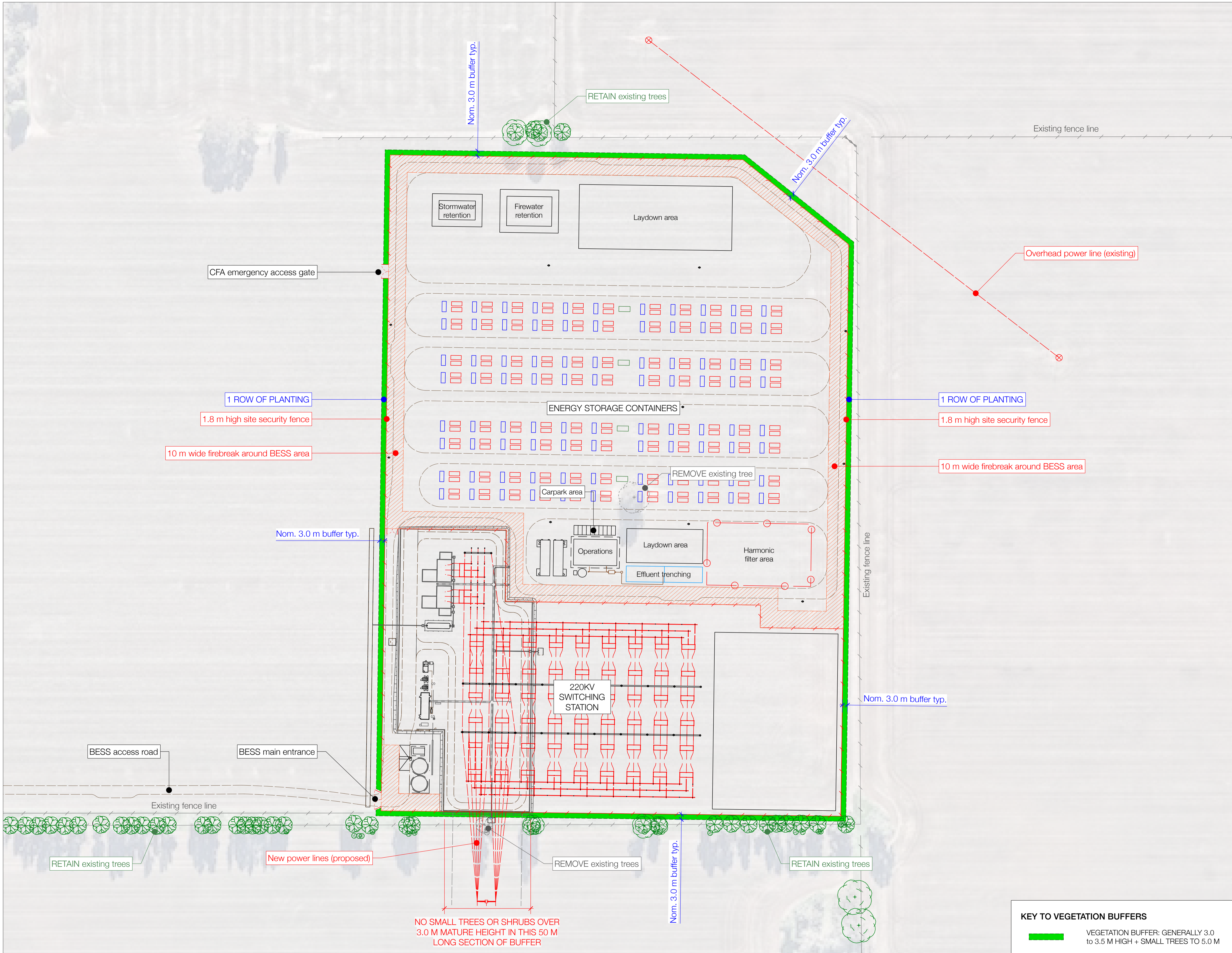


Scale 1:4,000 @ A1; 1:8,000 @ A3

Drawn CW Date 8 Jul 2024

Project # 21547 Drawing # 01 Rev B





Notes  
**IMPORTANT NOTE RE CLARIFICATION:**  
 Tenderers/Contractors are advised to contact this office to confirm/clarify any aspect of the works, incl. any details of the contract documents (incl. this plan) of which they are uncertain. No claim will be accepted on account of failure to do so. IF IN DOUBT ... ASK.  
 This plan shall be read in conjunction with the ACEnergy Pty Ltd Pine Lodge BESS drawings.

**This copied document to be made available for the sole purpose of enabling its consideration and review as part of a planning process under the Planning and Environment Act 1987. The document must not be used for any purpose which may breach any copyright**

Rev	Date	Revision Note	By
C	15/7/2024	Final revisions/adjustments	CW
B	8/7/2024	Fully updated to new D-BESS layout; Landscape adjusted to match.	CW
A	10/12/21	10 m firebreak added	CW

Issue	Date	Issue Note	By
5	5/8/2024	REVISED APPROVAL ISSUE	CW
4	15/7/2024	REVISED APPROVAL ISSUE	CW
3	8/7/2024	REVISED APPROVAL ISSUE	CW
2	10/12/21	UPDATED APPROVAL ISSUE	CW
1	7/11/21	APPROVAL ISSUE	CW

Surveyors  
 —  
 Structural Engineer:  
 —  
 Consulting Engineer:  
 —  
 Project Managers  
**ACEnergy Pty Ltd**  
 MOb: 0497 514 353 eMail: danny.w@acenergy.com.au  
 Other:  
 —  
 MOb: eMail:  
 Proprietor

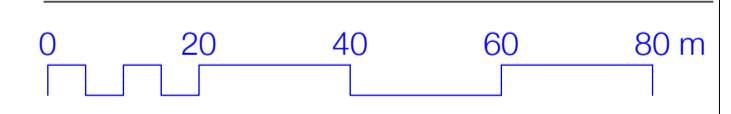


Project  
**Pine Lodge BESS**  
 910 Sidebottoms Road Pine Lodge Victoria

Drawing  
**Landscape Screening Plan**

Sheet **2** of 4

Local Authority **City of Greater Shepparton**



Scale **1:1,000 @ A1; 1:2,000 @ A3**

Drawn **CW** Date **8 Jul 2024**

Project # **21547** Drawing # **02** Rev **C**



PO Box 757 Mansfield Victoria Australia 3724  
 P 03 5779 1447 E gcla@groundcontrol.com.au  
 © Ground Control Landscape Architecture Pty Ltd retains copyright of all designs on this drawing. Written authority is required for any reproduction.

**KEY TO VEGETATION BUFFERS**  
 VEGETATION BUFFER: GENERALLY 3.0 to 3.5 M HIGH + SMALL TREES TO 5.0 M

**NO SMALL TREES OR SHRUBS OVER 3.0 M MATURE HEIGHT IN THIS 50 M LONG SECTION OF BUFFER**

**ADVERTISED PLAN**

**REVISED APPROVAL ISSUE - 5 August 2024**

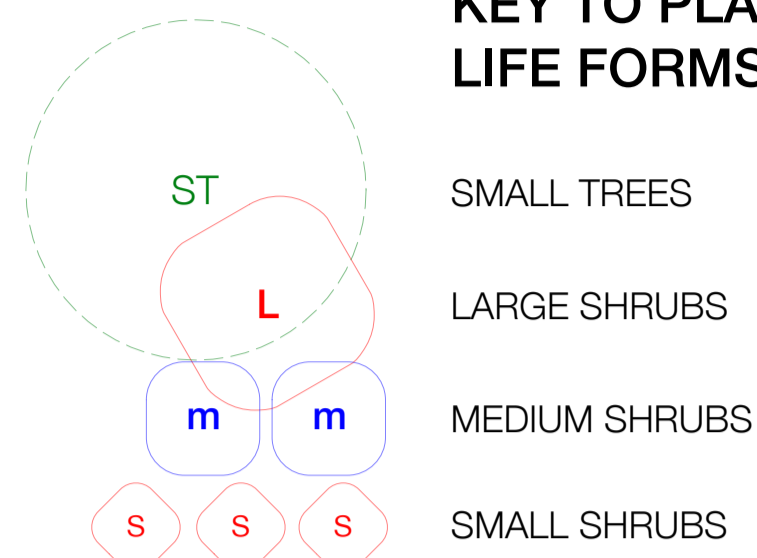
LIFE FORM	INDIGENOUS	SPECIES NAME	COMMON NAME	EST. MATURE HEIGHT	EST. MATURE SPREAD	POT SIZE	QUANTITY
<b>SMALL TREES</b>							
ST	●	<i>Acacia pravissima</i>	Ovens Wattle	5.0	4.0	Hiko	50
ST	●	<i>Acacia pycnantha</i>	Golden Wattle	5.0	3.0	Hiko	20
ST	●	<i>Pittosporum angustifolium</i>	Weeping Pittosporum	5.0	4.0	Hiko	50
<b>LARGE SHRUBS</b>							
L	●	<i>Acacia oswaldii</i>	Mijee	4.0	3.0	Hiko	60
L	●	<i>Acacia verniciflua</i>	Varnish Wattle	3.5	3.0	Hiko	92
L	●	<i>Callistemon 'Kings Park Special'</i>	Bottlebrush (variety)	3.5	3.0	Hiko	60
L	●	<i>Eremophila deserti</i>	Turkey Bush	2.5	3.0	Hiko	90
L	●	<i>Myoporum montanum</i>	Western Boobialla	3.0	3.0	Hiko	60
<b>MEDIUM SHRUBS</b>							
M	●	<i>Acacia montana</i>	Mallee Wattle	2.0	2.0	Hiko	42
M	●	<i>Acacia paradoxa</i>	Hedge Wattle	2.0	3.0	Hiko	60
M	●	<i>Bursaria spinosa</i>	Sweet Bursaria	2.5	2.0	Hiko	50
M	●	<i>Callistemon sieberi</i>	River Bottlebrush	3.0	2.0	Hiko	40
M	●	<i>Senna artemisioides subsp. zygomphilla</i>	Senna	2.5	2.0	Hiko	50
<b>SMALL SHRUBS</b>							
S	●	<i>Acacia acinacea</i>	Gold Dust Wattle	1.5	2.0	Hiko	40
S	●	<i>Acacia flexifolia</i>	Bent-leaf Wattle	1.5	2.0	Hiko	40
S	●	<i>Enchylaena tomentosa</i>	Ruby Saltbush	0.8	1.5	Hiko	40

**TOTAL PLANTS QUANTITY 844**

**ADVERTISED PLAN**

This copied document to be made available for the sole purpose of enabling its consideration and review as part of a planning process under the Planning and Environment Act 1987. The document must not be used for any purpose which may breach any copyright

**KEY TO PLANT LIFE FORMS**



Unless otherwise noted, all plants to be planted with Arbogreen 'Greenguard POP' or similar approved tree guards and biodegradable jute weed mats

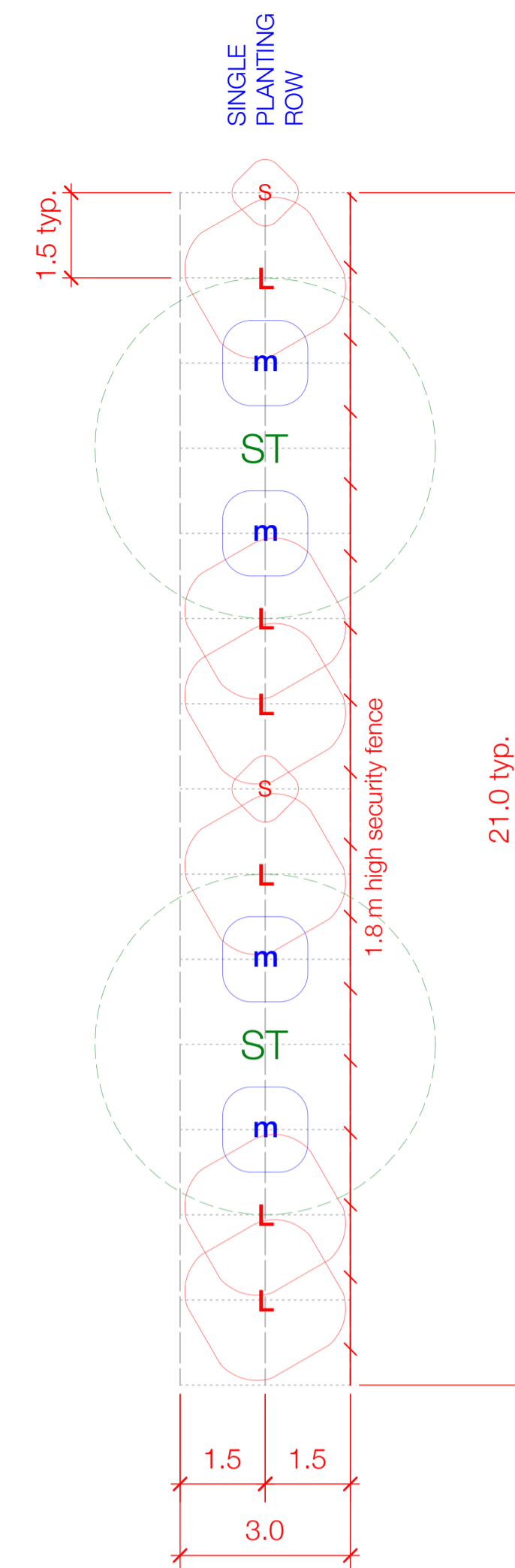
**PLANT SET-OUT**

Plant species shall be distributed in natural groupings to all planting areas, generally in accordance with plant life-form planting layouts as described in the Vegetation Buffer Detail Sheets as part of this drawing set.

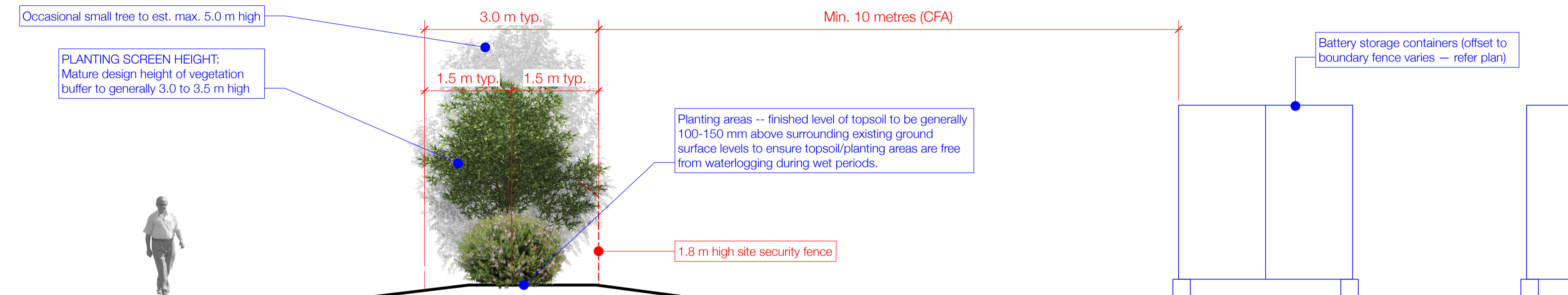
Avoid concentrations of one species in any one area.

Avoid planting more than 5 no. of the same species in any one 21 m long typical planting row.

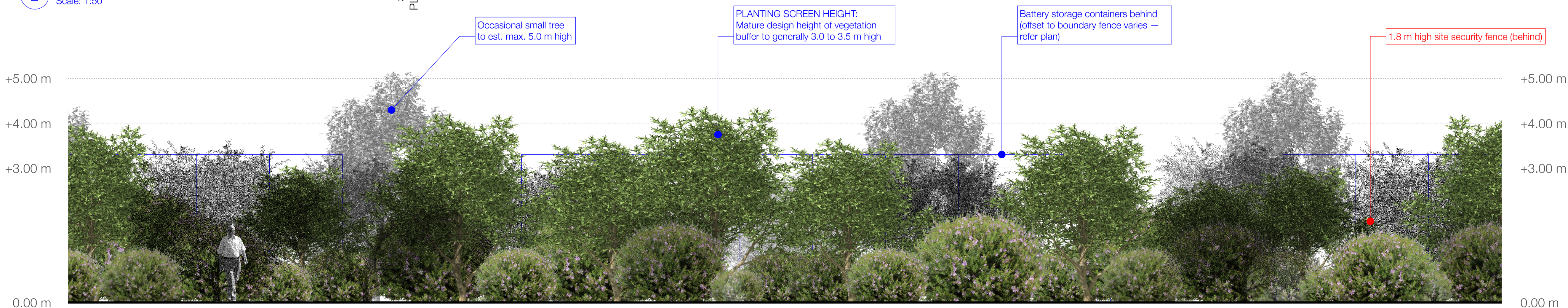
Maximise plant diversity at plant set-out.



**1 TYP. VEGETATION BUFFER**  
Scale: 1:100



**2 TYPICAL VEGETATION BUFFER (SECTION)**  
Scale: 1:50



**3 TYPICAL VEGETATION BUFFER (EXTERNAL ELEVATION)**  
Scale: 1:50

Notes  
IMPORTANT NOTE RE CLARIFICATION:  
Tenders/Contractors are advised to contact this office to confirm/clarify any aspect of the works, incl. any details of the contract documents (incl. this plan) of which they are uncertain. No claim will be accepted on account of failure to do so. IF IN DOUBT ... ASK.

This plan shall be read in conjunction with the ACnergy Pty Ltd Pine Lodge BESS drawings.

B	15/7/2024	Final revisions/adjustments	CW
A	8/7/2024	Fully updated to new D-BESS layout; Landscape adjusted to match.	CW

Rev	Date	Revision Note	By
-----	------	---------------	----

5	5/8/2024	REVISED APPROVAL ISSUE	CW
4	15/7/2024	REVISED APPROVAL ISSUE	CW
3	8/7/2024	REVISED APPROVAL ISSUE	CW
2	10/12/21	UPDATED APPROVAL ISSUE	CW
1	7/11/21	APPROVAL ISSUE	CW

Issue	Date	Issue Note	By
-------	------	------------	----

Surveyors

Structural Engineer:

Consulting Engineer

Project Managers

ACnergy Pty Ltd

Mob: 0497 514 353 eMail: danny.w@acenergy.com.au

Other:

Proprietor



Project

**Pine Lodge BESS**

910 Sidebottoms Road Pine Lodge Victoria

Drawing

**Landscape Screening**

Sheet 3 of 4

Local Authority City of Greater Shepparton

Scale As shown @ A1

Drawn CW Date 8 Jul 2024

Project # 21547 Drawing # 03 Rev B

North



groundcontrol

Ground Control

Landscape Architecture Pty Ltd

ABN 53 776 078 327

PO Box 757 Mansfield Victoria Australia 3724

P 03 5779 1447 E gcla@groundcontrol.com.au

© Ground Control Landscape Architecture Pty Ltd retains copyright of all designs on this drawing. Written authority is required for any reproduction.

REVISED APPROVAL ISSUE - 5 August 2024

## LANDSCAPE WORKS CONSTRUCTION NOTES:

### 1 WORKS BY CIVIL/OTHERS

All construction & civil works incl. demolition, building works, bulk earthworks, drainage infrastructure, road pavements, solar panel arrays & associated infrastructure, fencing and other related works.

The civil contractor will ensure the following minimum depths of site topsoil are provided for the landscape works:

- Planting areas -- min. 150 mm depth site topsoil.
- Finished level of topsoil to be generally 100-150 mm above surrounding existing ground surface levels to ensure topsoil/planting areas are free from waterlogging during wet periods.

### 2 INSURANCES

Provide certificates of currency for Public Liability Insurance (min. \$20M) and Workcover insurance (min. \$20M) to the Superintendent prior to commencing works. Each certificate of currency shall note the Proprietor as an interested party.

### 3 ROAD OPENING PERMIT

Apply to the responsible authority for a road opening permit (if required), incl. the payment of all fees and charges re same. An approved copy of the approved road opening permit shall also be provided to the Superintendent prior to works commencing on site.

### 4 LANDSCAPE PRE-COMMENCEMENT MEETING

The Contractor shall Initiate, coordinate and attend a pre-commencement meeting with Council, Proprietor & Superintendent, incl. achieving compliance with all Council & specified requirements, checklists, insurances, approvals, etc.

### 5 TRAFFIC MANAGEMENT

If required, prepare and submit to the responsible authority a traffic management plan to their satisfaction, incl. the payment of all fees and charges re same. An approved copy of this plan shall also be provided to the Superintendent prior to works commencing on site. Implement approved traffic management plan during the duration of the Works on site.

### 6 LOCATE EXISTING SERVICES

Locate all existing services prior to commencing works, contacting Dial Before You Dig, the project civil engineers/contractor and/or the relevant authorities re same as required. Identify all overhead services prior to commencing works.

### 7 SET OUT THE WORKS

Accurately set the works out as per the documentation set.

### 8 SOIL TESTING

Undertake soil sampling & testing from an approved ag. soil testing laboratory, incl. seeking recommendations for fertilising planting zone to improve soil NPK balance, trace elements, etc. Any recommended adjustments must be made to improve the soil conditions for native tree & shrub planting.

### 9 PLANTING AREAS PREPARATION -- INITIAL

These works to be done ideally in LATE FEBRUARY/MARCH of the planting year:

- Eradicate broadleaf, woody and noxious weeds from all planting areas using selective, non-residual herbicides. Manual removal of larger woody weeds may be required -- inspect site to confirm extent.
- Rip along planting line to 2.0 m wide to min. 300 mm depth with a Yeomans/Keyline plough with tynes at max. 750 mm centres to break up/aerate natural subgrade and to relieve compaction, grade & level.
- Apply fertilisers and additives at rates recommended by soil test results.
- Cultivate planting lines to break up soil clods and provide an appropriate planting medium.
- DO NOT WORK WET SOIL. Remove any deleterious material brought to the surface, consolidate soil and grade surface to even grades, free of any depressions or undulations.

### 10 PLANTING AREAS PREPARATION -- SECONDARY

These works to be done ideally in APRIL/MAY of the planting year:

- Eradicate broadleaf, woody and noxious weeds from all planting areas using selective, non-residual herbicides. Manual removal of larger woody weeds may be required.
- Re-cultivate planting lines to break up soil clods and provide an appropriate planting medium.
- DO NOT WORK WET SOIL. Remove any deleterious material brought to the surface, consolidate soil and grade surface to even grades, free of any depressions or undulations.

### 11 PLANT SUPPLY

All plants shall be healthy, free from any pests or diseases, be attractive, well grown and well formed plant specimens and shall have a healthy, well formed root system commensurate in size with the foliage mass (root systems must not be pot bound). Plant container sizes shall be as listed in the detail planting schedule, but shall be min. hiko, ViroTube or 50 mm round/square pot size.

The planting contractor shall inspect all plants on delivery to site and shall certify in writing to the Superintendent that all plants supplied are as described above and are accepted by the planting contractor for planting in this project.

### 12 PLANTING

#### PLANTING TIMING:

Planting should ideally be commenced & completed in APRIL/MAY of the planting year, immediately following the completion of the secondary planting areas preparation (refer Section 10 above). Planting timing can be pushed back as specific circumstances may direct, but any such delay may require additional planting areas preparation and/or additional supplementary establishment watering to ensure optimal plant establishment & growth.

#### PLANTING GENERALLY:

Set out plants as documented. Individual holes are to be dug (tree planter, mini-auger, etc.) in the prepared planting areas of sufficient size to easily accommodate the plant's root system and relieve any polishing. Create broad, shallow watering bowl to ALL plants to facilitate effective watering (min. 15 litre capacity). All plants shall be watered-in immediately after planting and at such times during the Contract period as is required to maintain growth free of water stress. Planting medium must be moist - do not plant into dry soil. Handle and plant all plants at all times in accordance with best horticultural practice.

### 13 FERTILISING

Refer maintenance section.

### 14 WEED MATS

Supply & install to each plant a 600 x 600 mm TreeMax or similar approved jute weed mat. Installation strictly to manufacturer's recommendations.

### 15 TREE/PLANT GUARDS

Supply & install to each plant Arborgreen 'Greenguard POP' 450 x 200 mm (sides): Code: 'GRGRDPOP-TRI' or similar approved 100% biodegradable tree guard, incl. 1 no. x 25 x 25 x 750 mm HWD stake per guard to all plants. Ensure stake extends min. 300 mm into ground. Installation strictly to manufacturer's recommendations.

### 16 GRASSING (IF REQUIRED)

Some areas of grass seeding may be required and will be directed and quantified by the Superintendent.

Do not sow seed in periods of extreme heat, cold or wet, or where wind velocities are excessive unless otherwise approved. Seed mix shall be as follows:

- TURF-TYPE REGENERATING PERENNIAL RYEGRASS 95% by count
- TURF-TYPE TALL FESCUE 3% by count
- SUB CLOVER 1% by count
- WHITE CLOVER 1% by count

Seeding rate shall be min. 30 gms per m2. Apply seed evenly – seed application shall be via direct drilling or by other approved methods. Seeding shall be programmed when there is a period of anticipated weather conditions (i.e. rain) that will provide the best chance for germination of grass seed. Any areas affected by heavy rain, wind removing seed or other cause shall be re-seeded as specified to achieve an even cover of grass.

Slash grass when growth height has reached 100 mm or otherwise as directed by Superintendent. Should all the areas not require cutting at one time, complete all further cuts as necessary until 100% of the area has achieved successful coverage and all areas have received at least first cut.

### 17 PRACTICAL COMPLETION COORDINATION

The Contractor shall Initiate, coordinate and attend a Practical Completion meeting with Council, Proprietor & Superintendent, incl. achieving compliance with all Council & specified requirements, checklists, insurances, approvals, etc. NOTE: Min. 3 no. working days notice is required for a Practical Completion meeting.

### 18 LANDSCAPE ESTABLISHMENT MAINTENANCE PERIOD

Maintain the contract works from the Date of Practical Completion to the Date of Final Completion/hand-over.

Maintenance shall include care of the contract area by accepted horticultural practices, and rectification of any defects that become apparent during this period. Maintenance tasks to be carried out during the maintenance period shall include, but shall not be limited to, slashing, watering as required, weed control, pest & disease control & management, tree guard adjustment/replacement as required, rubbish removal.

#### WEED CONTROL – PLANTED AREAS:

In planted areas, poison all broadleaf, noxious & woody weeds as they appear. Slashable grasses are to be retained generally between planting rows. Selective herbicides shall be nominated by the Contractor and approved by the Superintendent prior to use. Non-selective herbicide shall be Monsanto 'Roundup BIACTIVE' glyphosate-based herbicide -- standard 'Roundup' is NOT to be used. NO OTHER HERBICIDE SHALL BE USED WITHOUT PRIOR APPROVAL. All herbicide applications shall use NuFarm 'Sprymate or similar approved marker dye admixture and shall be handled and applied strictly according to manufacturer's recommendations, recommended rates and directions.

#### GRASS MANAGEMENT – PLANTED AREAS:

Slash all areas between plants in rows and min. 1.5 m along all outside edges of all planting zones on a regular basis to maintain grass height to max. 100 mm. Slashing shall comply with all local Council and RFS guidelines re grass heights.

#### JUTE MAT & TREE/PLANT GUARDS:

Maintain jute mat and tree/plant tree guards for first two summers minimum, repair and replace as required during this period.

#### PLANT REPLACEMENT:

Replace any falling, failed or dead plants during the maintenance period. The Superintendent and the Contractor will inspect the full planting areas at the end of each summer and will identify the number and species of plants that are falling, have failed/died. The Contractor shall replace all such plants identified.

#### WATERING:

The Contractor shall ensure all plants planted/maintained under this contract receive adequate (but not excessive) watering to maintain optimum growth and health. Watering shall be localised to each plant, not broad spraying across the entire planting area, to limit weed/grass growth between planting rows.

Watering shall be either manually via watercart/hose as required OR via a drip irrigation system, using Netafim 'UniRAM AS' inline dripline @ 1.6 LPH with emitter spacing of 400 mm -- one surface dripline per planting row. Drip irrigation system to be designed by an accredited irrigation designer and connect to an available clean water source, incl. filtration at source.

#### FERTILISING:

All plants (excluding Proteacea family) shall be fertilised with Scotts 'Osmocote® Plus Trace Elements: Native Gardens' (NPK 21.8 : 0.7 : 7.2) or similar approved at the manufacturer's recommended rates. Fertiliser shall be locally spread on soil surface around plants during planting operations. If unsure which plants are in the Proteacea family – ASK.

Allow for one fertiliser application in Year 1 and second application in Year 2.

#### PESTS & DISEASES:

Regularly monitor all plants grasses planted/maintained under this contract for evidence of pest and/or disease attack -- identify and treat any/all problems arising.

#### RABBITS, HARES, KANGAROOS, ETC.:

Identify any predation by rabbits, hares and other pests with potential to damage or destroy the landscape works under this contract. Take all necessary steps, within local authority regulations and/or guidelines, to limit or eradicate predation. Maintain all tree guards in good condition to limit rabbit/hare/kangaroo/other damage to plants with installed guards.

This copied document to be made available for the sole purpose of enabling its consideration and review as part of a planning process under the Planning and Environment Act 1987. The document must not be used for any purpose which may breach any copyright

Notes

**IMPORTANT NOTE RE CLARIFICATION:**  
Tenderers/Contractors are advised to contact this office to confirm/clarify any aspect of the works, incl. any details of the contract documents (incl. this plan) of which they are uncertain. No claim will be accepted on account of failure to do so. IF IN DOUBT ... ASK.

This plan shall be read in conjunction with the ACEnergy Pty Ltd Pine Lodge BESS drawings.

C	5/8/2024	Planting timing note added	CW
B	15/7/2024	Final revisions/adjustments	CW
A	8/7/2024	Fully updated to new D-BESS layout; Landscape adjusted to match.	CW

Rev	Date	Revision Note	By
-----	------	---------------	----

5	5/8/2024	REVISED APPROVAL ISSUE	CW
4	15/7/2024	REVISED APPROVAL ISSUE	CW
3	8/7/2024	REVISED APPROVAL ISSUE	CW
2	10/12/21	UPDATED APPROVAL ISSUE	CW
1	7/11/21	APPROVAL ISSUE	CW

Issue	Date	Issue Note	By
-------	------	------------	----

Surveyors

---

Tel: eMail

Structural Engineer:

---

Tel: eMail

Consulting Engineer

---

Mob: eMail

Project Managers

ACEnergy Pty Ltd

Mob: 0497 514 303 eMail: danny.w@acenergy.com.au

Other: ---

Mob: eMail

Proprietor



Project

## Pine Lodge BESS

910 Sidebottoms Road Pine Lodge Victoria

Drawing

## Landscape Specification Notes

Sheet 4 of 4

Local Authority City of Greater Shepparton

Scale N.T.S.

Drawn CW Date 8 Jul 2024

Project # Drawing # Rev

21547 04 C

North



groundcontrol

Ground Control

Landscape Architecture Pty Ltd

ABN 53 776 078 327

PO Box 757 Mansfield Victoria Australia 3724

P 03 5779 1447 E gcla@groundcontrol.com.au

© Ground Control Landscape Architecture Pty Ltd retains copyright of all designs on this drawing. Written authority is required for any reproduction.

REVISED APPROVAL ISSUE - 5 August 2024