



BARNAWARTHA SOLAR FARM

VISUAL IMPACT ASSESSMENT

RenewableAge 

Table of Contents

| | |
|--|----|
| 1. Introduction | 3 |
| 2. Barnawartha Local Environment | 3 |
| Figure 1 – Barnawartha Local Environment | 3 |
| 3. Hume Freeway Visual Impact Analysis | 3 |
| Figure 2 – Hume Freeway Viewing Positions | 4 |
| Figure 3 – Viewing Position A (VPA) | 5 |
| Figure 4 – Viewing Position B (VPB) | 6 |
| Figure 5 – Viewing Position C (VPC) | 7 |
| Figure 6 – Viewing Position D (VPD) | 8 |
| Figure 7 – Viewing Position E (VPE) | 9 |
| Figure 8 – Viewing Position F (VPF) | 10 |
| Figure 9 – Viewing Position G (VPG) | 11 |
| Figure 10 – Viewing Position H (VPH) | 12 |
| Figure 11 – Viewing Position I (VPI) | 13 |
| Figure 12 – Viewing Position J (VPJ) | 14 |
| Figure 13 – Viewing Position K (VPK) | 15 |
| Figure 14 – Viewing Position L (VPL) | 16 |
| Figure 15 – Viewing Position M (VPM) | 17 |
| 4. Hume Freeway Visual Impact Assessment | 18 |
| 5. Barnawartha Township Visual Impact Analysis | 18 |
| Figure 16 – Barnawartha Township Periphery Viewing Positions | 19 |
| Figure 17 – Viewing Position 1 (VP1) | 20 |
| Figure 18 – Viewing Position 2 (VP2) | 21 |
| Figure 19 – Viewing Position 3 (VP3) | 22 |
| Figure 20 – Viewing Position 4 (VP4) | 23 |
| Figure 21 – Viewing Position 5 (VP5) | 24 |
| Figure 22 – Viewing Position 6 (VP6) | 25 |
| 6. Barnawartha Township Visual Impact Assessment | 26 |
| 7. Contact Details | 26 |

1. Introduction

The Barnawartha Solar Farm is a proposed 5MW AC solar farm development to be located at 1377 Plunketts Rd, Barnawartha. The purpose of this document is to perform a visual impact assessment of the project development site for viewers travelling south along the Hume Freeway and for those living in the north-east periphery of the Barnawartha township.

2. Barnawartha Local Environment

The map below shows the project development area in relation to the Barnawartha local environment, including the township. The project area is obscured from view for most of the township by the western edge of the hillside of the Barnawartha Scenic Reserve.

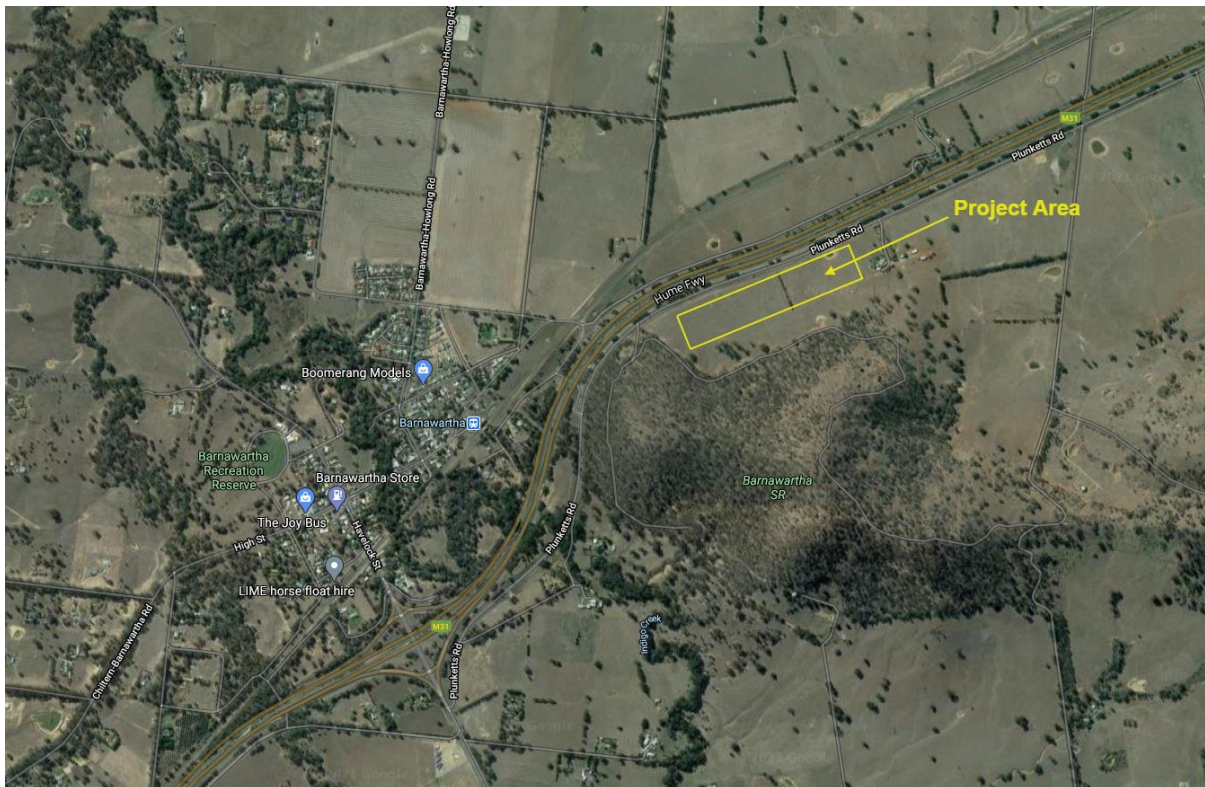


Figure 1 – Barnawartha Local Environment

3. Hume Freeway Visual Impact Analysis

To illustrate the potential visual impact of the development on the Hume Freeway traffic, photographs were taken of the proposed development site from various viewing positions along the southern lanes of the Hume Freeway. These viewing positions are shown on the map in Figure 2, with the images from each viewing position on the following pages. All photographs were taken with a visual aspect looking toward the subject development area, from a south-westerly viewing direction from position A to a south-easterly direction from position M.

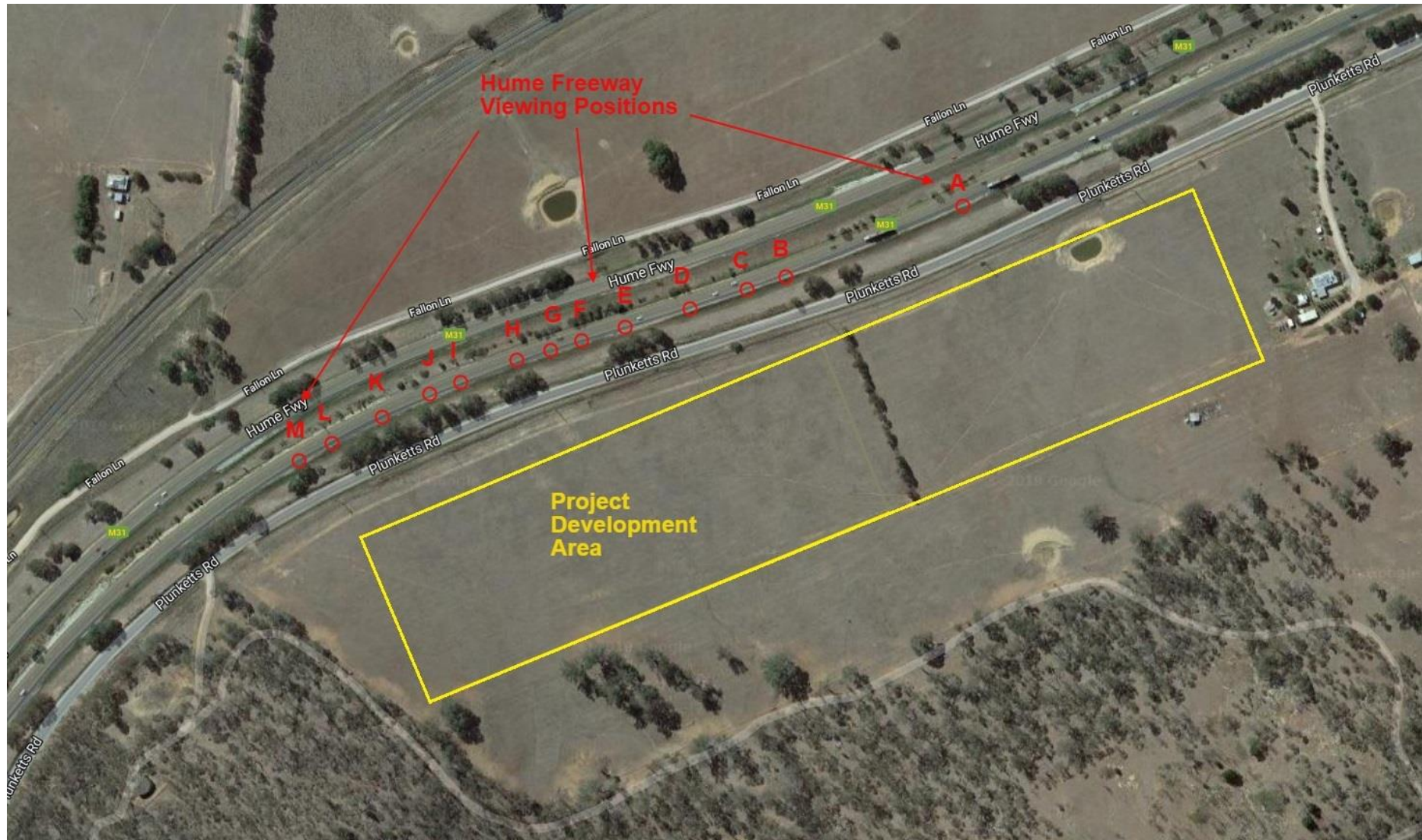


Figure 2 – Hume Freeway Viewing Positions



Figure 3 – Viewing Position A (VPA)



Figure 4 – Viewing Position B (VPB)



Figure 5 – Viewing Position C (VPC)



Figure 6 – Viewing Position D (VPD)



Figure 7 – Viewing Position E (VPE)



Figure 8 – Viewing Position F (VPF)



Figure 9 – Viewing Position G (VPG)



Figure 10 – Viewing Position H (VPH)



Figure 11 – Viewing Position I (VPI)



Figure 12 – Viewing Position J (VPJ)



Figure 13 – Viewing Position K (VPK)



Figure 14 – Viewing Position L (VPL)



Figure 15 – Viewing Position M (VPM)

4. Hume Freeway Visual Impact Assessment

The photographs show that there is very little of the subject development area that can be seen from the Hume Freeway. This is due to the large levee bank situated between the Hume Freeway and Plunketts Road as well as patches of native vegetation that provide partial screening. Taller structures like the existing power poles carrying the 22kV feeder can be seen from the Hume Freeway.

5. Barnawartha Township Visual Impact Analysis

To illustrate the potential visual impact of the development on the Barnawartha township, photographs were taken of the proposed development site from various viewing positions at the north-east periphery of the township. The viewing positions are shown on the map in Figure 16, with the images from each viewing position on the following pages. The photographs at viewing positions VP1 to VP4 were taken with an easterly viewing aspect and at VP5 and VP6 with a south-easterly aspect, all looking toward the project development area.



Figure 16 – Barnawartha Township Periphery Viewing Positions



Figure 17 – Viewing Position 1 (VP1)



Figure 18 – Viewing Position 2 (VP2)



Figure 19 – Viewing Position 3 (VP3)



Figure 20 – Viewing Position 4 (VP4)



Figure 21 – Viewing Position 5 (VP5)



Figure 22 – Viewing Position 6 (VP6)

6. Barnawartha Township Visual Impact Assessment

The photographs show that there is very little of the subject development area that can be seen from the north-eastern periphery of the Barnawartha township. The site cannot be seen at all from VP1 and VP2 due to vegetation of the Barnawartha Scenic Reserve hillside. Small patches can be seen in the distance from along Barnawartha-Howlong Road (VP3) except where the view is obscured by large trees (VP4). Small patches can be seen from VP5 and VP6 but these are very much in the far distance.

7. Contact Details

Steve Phillips

Principal Consultant

Renewable Age Pty Ltd

Mobile: 0417 031 677

Email: sphillips@renewableage.com

Website: www.renewableage.com

