

Acre

Acre

Acre

Acre

Acre

Acre

Acre

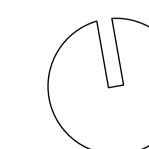
Acre

This copied document to be made available
for the sole purpose of enabling
its consideration and review as
part of a planning process under the
Planning and Environment Act 1987.
The document must not be used for any
purpose which may breach any
copyright

ADVERTISED
PLAN

ADVERTISED PLAN

Landscape Plan - Ground Floor
Scale: 1:100



Large format engineered porcelain tiles on pedestal system

Large format engineered porcelain tiles on pedestal system

Large format engineered porcelain tiles on pedestal system

Refer to next page

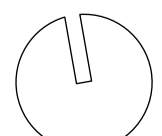
This copied document to be made available for the sole purpose of enabling its consideration and review as part of a planning process under the Planning and Environment Act 1987. The document must not be used for any purpose which may breach any copyright



ADVERTISED PLAN

NOTE:
L1 - 86m2 planters to common area
L2 - 2.4m2 planters to common area
L3 - 2.4m2 planters to common area
L4 - 2.4m2 planters to common area
L7 - 46m2 planters to common area
TOTAL: 139.2m2 planters to common areas

Landscape Concept Plan - Level 1
Scale: 1:100





Large engineered porcelain tiles on pedestals

GRC raised planter H=500mm (from FFL)
Refer to Planter H=600 Typical Detail

GRC raised planter H=500mm (from FFL)
Refer to Planter H=600 Typical Detail

Featured small tree in soil mounding to 900mm depth.
Refer to Planter H=600mm with mounded soil for Tree Typical Detail

Mixed layered planting

Featured small tree in soil mounding to 900mm depth

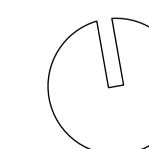
This copied document to be made available for the sole purpose of enabling its consideration and review as part of a planning process under the Planning and Environment Act 1987. The document must not be used for any purpose which may breach any copyright

Featured small tree in soil mounding to 900mm depth

ADVERTISED PLAN

Landscape Concept Plan - Level 1 Common Area
Scale: 1:75

NOTE:
L1 - 86m2 planters to common area
L2 - 2.4m2 planters to common area
L3 - 2.4m2 planters to common area
L4 - 2.4m2 planters to common area
L7 - 46m2 planters to common area
TOTAL: 139.2m2 planters to common areas





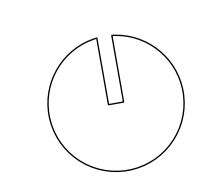
ADVERTISED PLAN

Large format concrete pavers to sit on pedestal system

This copied document to be made available for the sole purpose of enabling its consideration and review as part of a planning process under the Planning and Environment Act 1987. The document must not be used for any purpose which may breach any copyright

Landscape Concept Plan - Level 2
Scale: 1:100

NOTE:
L1 - 86m2 planters to common area
L2 - 2.4m2 planters to common area
L3 - 2.4m2 planters to common area
L4 - 2.4m2 planters to common area
L7 - 46m2 planters to common area
TOTAL: 139.2m2 planters to common areas





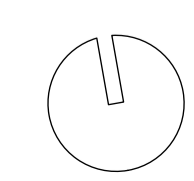
This copied document to be made available for the sole purpose of enabling its consideration and review as part of a planning process under the Planning and Environment Act 1987. The document must not be used for any purpose which may breach any copyright

ADVERTISED PLAN

Large format concrete pavers to sit on pedestal system

Landscape Concept Plan - Level 3
Scale: 1:100

NOTE:
L1 - 86m2 planters to common area
L2 - 2.4m2 planters to common area
L3 - 2.4m2 planters to common area
L4 - 2.4m2 planters to common area
L7 - 46m2 planters to common area
TOTAL: 139.2m2 planters to common areas



GRC raised planters to be planted out with layered, hardy planting. Cascading planting to spill over edges of planters. Refer to Perimeter Planter H=1100mm Void Fill Typical Detail

This copied document to be made available for the sole purpose of enabling its consideration and review as part of a planning process under the Planning and Environment Act 1987. The document must not be used for any purpose which may breach any copyright

GRC raised planters to be planted out with layered, hardy planting. Cascading planting to spill over edges of planters.

GRC raised planters. Greenery to cascade over the facade of the building

Large format engineered porcelain tiles on pedestal system

GRC raised planters to be planted out with layered, hardy planting

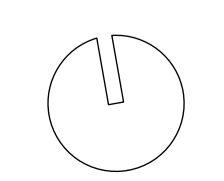
GRC raised planters. Greenery to cascade over the facade of the building. Refer to Perimeter Planter H=1100mm Void Fill Typical Detail

ADVERTISED PLAN



Landscape Concept Plan - Level 4
Scale: 1:100

NOTE:
 L1 - 86m2 planters to common area
 L2 - 2.4m2 planters to common area
 L3 - 2.4m2 planters to common area
 L4 - 2.4m2 planters to common area
 L7 - 46m2 planters to common area
 TOTAL: 139.2m2 planters to common areas



These are conceptual drawings only. Acre Landscape Architecture Studio will not be held responsible for any structural works constructed from these drawings. All dimensions to be confirmed on site by contractor prior to commencement of works.

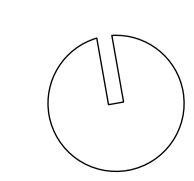
ADVERTISED
PLAN



This copied document to be made available for the sole purpose of enabling its consideration and review as part of a planning process under the Planning and Environment Act 1987. The document must not be used for any purpose which may breach any copyright

Large format concrete pavers to sit on pedestal system

Landscape Concept Plan - Level 5
Scale: 1:100



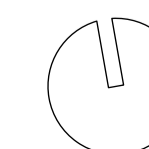
This copied document to be made available for the sole purpose of enabling its consideration and review as part of a planning process under the Planning and Environment Act 1987. The document must not be used for any purpose which may breach any copyright



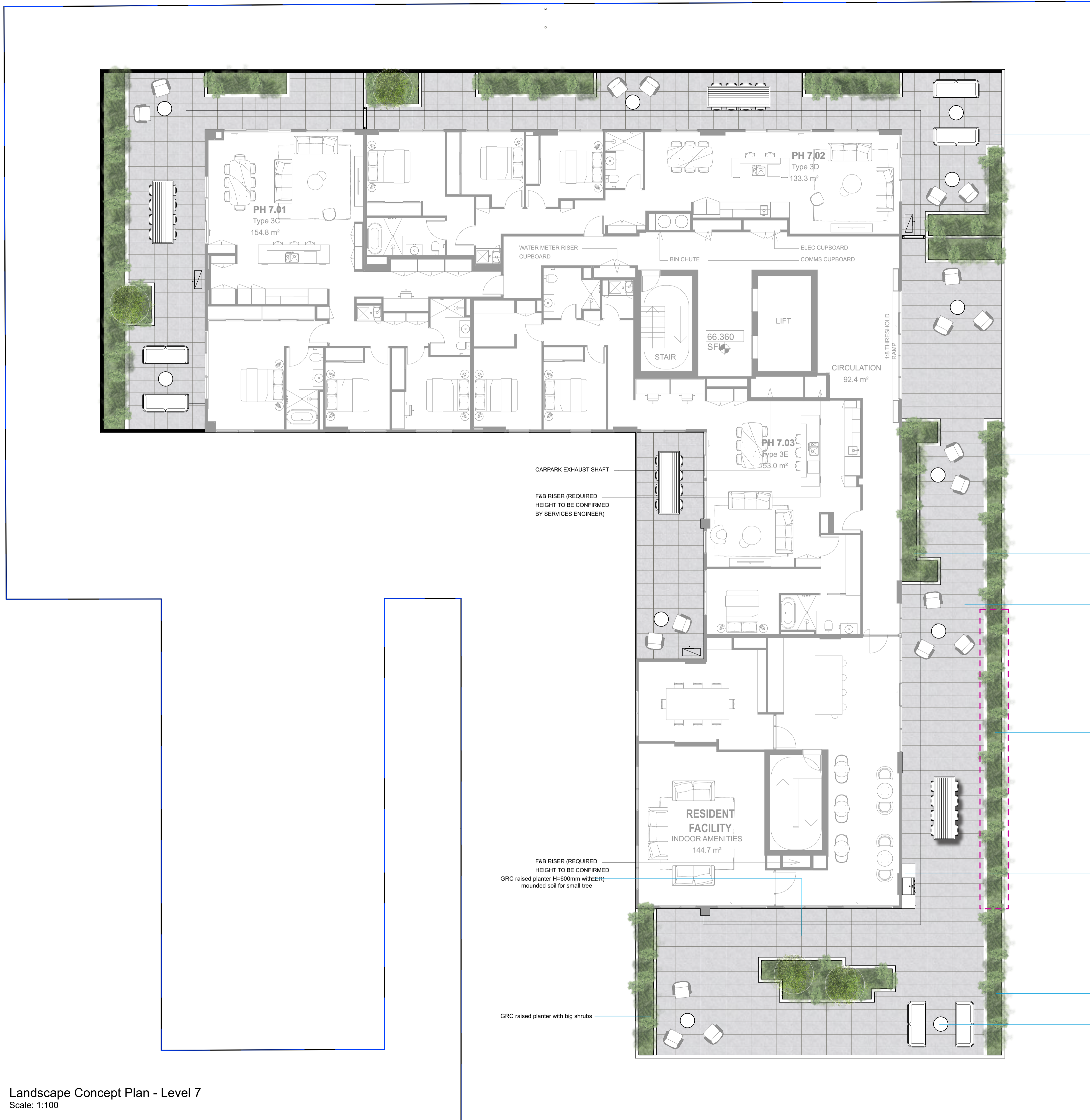
ADVERTISED PLAN

Large format concrete pavers on pedestal system

Landscape Concept Plan - Level 6
Scale: 1:100



ADVERTISED PLAN



GRC raised planters. Refer to Perimeter Planter H=1100mm Void Fill Typical Detail

GRC raised planters to be planted out with layered, hardy planting. Cascading planting to spill over edges of planters

Large format engineered porcelain tiles

GRC raised planters Refer to Perimeter Planter H=1100mm Void Fill Typical Detail

This copied document to be made available for the sole purpose of enabling its consideration and review as part of a planning process under the Planning and Environment Act 1987. The document must not be used for any purpose which may breach any copyright

GRC raised planters Refer to Planter H=600mm Typical Detail

Large format engineered porcelain tiles on pedestal system

Planter area with edible shrubs and herbs 10m2

Outdoors bbq stainless steel station

Hardy, yet green planting will frame the area while cascading planting will soften architectural lines

Casual seating area

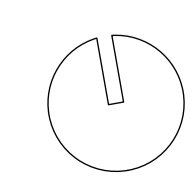
CARPARK EXHAUST SHAFT
F&B RISER (REQUIRED HEIGHT TO BE CONFIRMED BY SERVICES ENGINEER)

F&B RISER (REQUIRED HEIGHT TO BE CONFIRMED)
GRC raised planter H=600mm with 600mm mounded soil for small tree

GRC raised planter with big shrubs

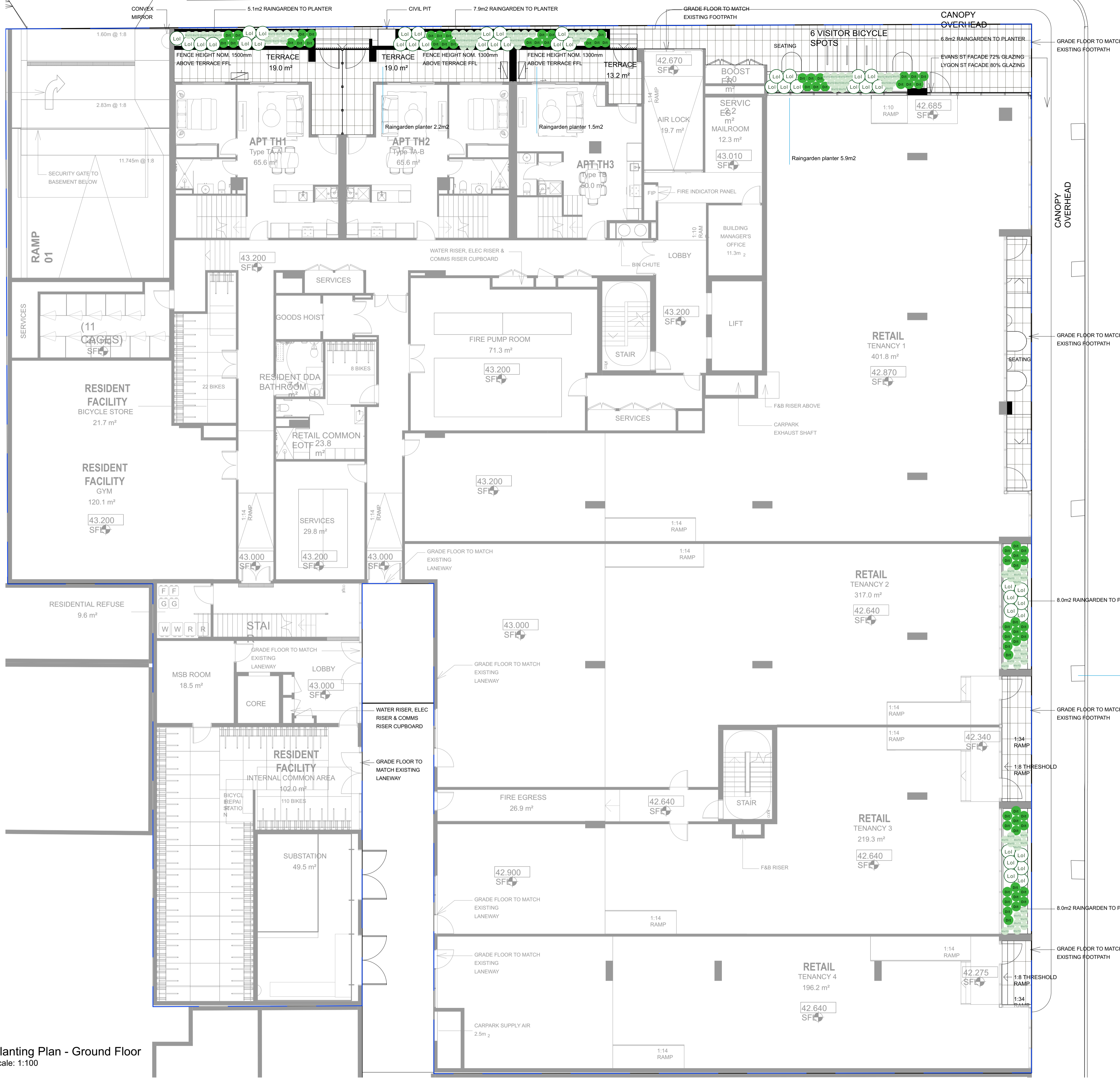
Landscape Concept Plan - Level 7
Scale: 1:100

NOTE:
L1 - 86m2 planters to common area
L2 - 2.4m2 planters to common area
L3 - 2.4m2 planters to common area
L4 - 2.4m2 planters to common area
L7 - 46m2 planters to common area
TOTAL: 139.2m2 planters to common areas



Planting Plan

This copied document to be made available for the sole purpose of enabling its consideration and review as part of a planning process under the Planning and Environment Act 1987. The document must not be used for any purpose which may breach any copyright



PLANT SCHEDULE

CODE	QTY	BOTANICAL NAME	COMMON NAME	*HEIGHT	*SPREAD	SIZE	REMARKS
Trees							
Shrubs	79	Westringia fruticosa 'Grey Box'	Native Rosemary	0.4 m	0.4 m	300 mm	
Perennials							
Grasses	68	Dianella tasmanica	Tasman Flax Lily	0.7 m	0.7 m	140 mm	
	43	Lomandra longifolia	Spiny-head Mat-rush	1 m	1 m	140 mm	
Groundcovers							
Succulents							
Climbers							
Ferns / Shade Perennials							
Total:	190						* = maintained

Ref Image	Code	Description
	WefG	Westringia fruticosa 'Grey Box'
	Dit	Dianella tasmanica
	Lol	Lomandra longifolia

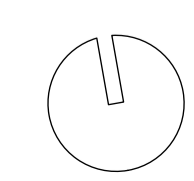
LYGON STREET

ADVERTISED PLAN

This copied document to be made available for the sole purpose of enabling its consideration and review as part of a planning process under the Planning and Environment Act 1987. The document must not be used for any purpose which may breach any copyright

Planting Plan - Ground Floor
Scale: 1:100

These are conceptual drawings only. Acre Landscape Architecture Studio will not be held responsible for any structural works constructed from these drawings. All dimensions to be confirmed on site by contractor prior to commencement of works.





PLANT SCHEDULE

CODE	QTY	BOTANICAL NAME	COMMON NAME	*HEIGHT	*SPREAD	SIZE	REMARKS
Trees							
Coci	3	Corymbia citriodora 'Scentuous'	Dwarf Lemon Scented Gum	7 m	3 m	150 Ltr	
Le1	3	Leptospermum laevigatum	Coastal Tea Tree	5 m	3 m	150 Ltr	
Shrubs							
AdsD	23	Adenanthos sericeus 'Dwarf Woolly Bush'	Dwarf Woolly Bush	0.8	0.8	300 mm	
Cob	18	Correa bauerlenii	Chef's Cap Correa	1.5 m	1.5 m	300 mm	
WecA	19	Westringia cultivar 'Aussie Box'	Westringia Aussie Box	0.75 m	0.75 m	300 mm	
Perennials							
Grasses							
LocoM	138	Lomandra confertifolia ssp rubiginosa 'Mist'	Rubiginosa mist	0.6 m	0.6 m	140 mm	
Pol	124	Poa labillardierei	Common Tussock Grass	1 m	0.6 m	140 mm	
Groundcovers							
CagC	18	Casuarina glauca 'Cousin It'	Casuarina 'Cousin It'	0.2 m	1.5 m	140 mm	
DirE	36	Dichondra repens 'Emerald Falls'	Kidney Weed	0.05 m	1 m	140 mm	
Rhb	1	Rhipsalis baccifera	Mistletoe Cactus	0.2 m	1 m	140 mm	
RooP	32	Rosmarinus officinalis 'Prostratus	Prostrate Rosemary	0.2 m	1 m	140 mm	
Succulents							
Climbers							
Ferns / Shade Perennials							
Total:	415						* = maintained

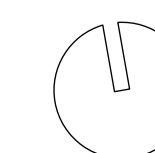
Ref Image	Code	Description	Ref Image	Code	Description
	Coci	Corymbia citriodora ssp. dwarf pink		LocoM	Lomandra confertifolia ssp. rubiginosa mist
	Le1	Leptospermum laevigatum		Pol	Poa labillardierei
	AdsD	Adenanthos sericeus 'Dwarf woolly bush'		CagC	Casuarina glauca 'Cousin It'
	Cob	Correa bauerlenii		DirE	Dichondra repens 'Emerald Falls'
	WecA	Westringia 'Aussie Box'		Rhb	Rhipsalis baccifera
	RooP	Rosmarinus officinalis 'Prostratus'		RooP	Rosmarinus officinalis 'Prostratus'

This copied document to be made available for the sole purpose of enabling its consideration and review as part of a planning process under the Planning and Environment Act 1987. The document must not be used for any purpose which may breach any copyright

ADVERTISED PLAN

Planting Plan - Level 1
Scale: 1:75

NOTE:
L1 - 86m2 planters to common area
L2 - 2.4m2 planters to common area
L3 - 2.4m2 planters to common area
L4 - 2.4m2 planters to common area
L7 - 46m2 planters to common area
TOTAL: 139.2m2 planters to common areas





PLANT SCHEDULE

CODE	QTY	BOTANICAL NAME	COMMON NAME	*HEIGHT	*SPREAD	SIZE	REMARKS
Trees							
Shrubs							
WecA	2	Westringia cultivar 'Aussie Box'	Westringia Aussie Box	0.75 m	0.75 m	300 mm	
Perennials							
Grasses							
LocoM	3	Lomandra confertifolia ssp rubiginosa 'Mist'	Rubiginosa mist	0.6 m	0.6 m	140 mm	
Po1	3	Poa labillardierei	Common Tussock Grass	1 m	0.6 m	140 mm	
Groundcovers							
DirE	4	Dichondra repens 'Emerald Falls'	Kidney Weed	0.05 m	1 m	140 mm	
Roop	2	Rosmarinus officinalis 'Prostratus	Prostrate Rosemary	0.2 m	1 m	140 mm	
Succulents							
Climbers							
Ferns / Shade Perennials							
Total:	14						* = maintained

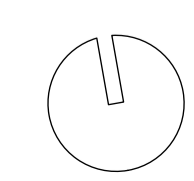
Ref Image	Code	Description	Ref Image	Code	Description
	WecA	Westringia 'Aussie Box'		DirE	Dichondra repens 'Emerald Falls'
	LocoM	Lomandra confertifolia ssp. rubiginosa mist		Roop	Rosmarinus officinalis 'Prostratus'
	Po1	Poa labillardierei			

ADVERTISED PLAN

This copied document to be made available for the sole purpose of enabling its consideration and review as part of a planning process under the Planning and Environment Act 1987. The document must not be used for any purpose which may breach any copyright

Planting Plan - Level 2
Scale: 1:100

NOTE:
L1 - 86m2 planters to common area
L2 - 2.4m2 planters to common area
L3 - 2.4m2 planters to common area
L4 - 2.4m2 planters to common area
L7 - 46m2 planters to common area
TOTAL: 139.2m2 planters to common areas





PLANT SCHEDULE

CODE	QTY	BOTANICAL NAME	COMMON NAME	*HEIGHT	*SPREAD	SIZE	REMARKS
Trees							
Shrubs							
WecA	2	Westringia cultivar 'Aussie Box'	Westringia Aussie Box	0.75 m	0.75 m	300 mm	
Perennials							
Grasses							
LocoM	4	Lomandra confertifolia ssp rubiginosa 'Mist'	Rubiginosa mist	0.6 m	0.6 m	140 mm	
Po1	3	Poa labillardierei	Common Tussock Grass	1 m	0.6 m	140 mm	
Groundcovers							
DirE	4	Dichondra repens 'Emerald Falls'	Kidney Weed	0.05 m	1 m	140 mm	
Roop	2	Rosmarinus officinalis 'Prostratus	Prostrate Rosemary	0.2 m	1 m	140 mm	
Succulents							
Climbers							
Ferns / Shade Perennials							
Total:	15						* = maintained

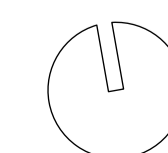
Ref Image	Code	Description	Ref Image	Code	Description
	WecA	Westringia 'Aussie Box'		DirE	Dichondra repens 'Emerald Falls'
	LocoM	Lomandra confertifolia ssp. rubiginosa mist		Roop	Rosmarinus officinalis 'Prostratus'
	Po1	Poa labillardierei			

ADVERTISED PLAN

This copied document to be made available for the sole purpose of enabling its consideration and review as part of a planning process under the Planning and Environment Act 1987. The document must not be used for any purpose which may breach any copyright

Planting Plan - Level 3
Scale: 1:100

NOTE:
L1 - 86m2 planters to common area
L2 - 2.4m2 planters to common area
L3 - 2.4m2 planters to common area
L4 - 2.4m2 planters to common area
L7 - 46m2 planters to common area
TOTAL: 139.2m2 planters to common areas





PLANT SCHEDULE

CODE	QTY	BOTANICAL NAME	COMMON NAME	*HEIGHT	*SPREAD	SIZE	REMARKS
Trees							
Shrubs							
Acg	22	Acacia glaucoptera	Flat Wattle	1 m	2 m	300 mm	
RueL	25	Russelia equisetiformis 'Lemon Falls'	Firecracker Plant	1 m	1.5 m	300 mm	
WecA	11	Westringia cultivar 'Aussie Box'	Westringia Aussie Box	0.75 m	0.75 m	300 mm	
Perennials							
LocoM	3	Lomandra confertifolia ssp rubiginosa 'Mist'	Rubiginosa mist	0.6 m	0.6 m	140 mm	
MisA	7	Miscanthus sinensis 'Adagio'	Dwarf Feather Grass	1 m	1 m	140 mm	
Pol	3	Poa labillardierei	Common Tussock Grass	1 m	0.6 m	140 mm	
Groundcovers							
CagC	51	Casuarina glauca 'Cousin It'	Casuarina 'Cousin It'	0.2 m	1.5 m	140 mm	
Cha	7	Chrysocephalum apiculatum	Yellow Buttons	0.3 m	0.5 m	140 mm	
DirE	13	Dichondra repens 'Emerald Falls'	Kidney Weed	0.05 m	1 m	140 mm	
Roop	2	Rosmarinus officinalis 'Prostratus'	Prostrate Rosemary	0.2 m	1 m	140 mm	
Succulents							
Climbers							
Ferns / Shade Perennials							
Total:				144			

* = maintained

Ref Image	Code	Description	Ref Image	Code	Description
	Acg	Acacia glaucoptera		Pol	Poa labillardierei
	RueL	Russelia equisetiformis 'Lemon Falls'		CagC	Casuarina glauca 'Cousin It'
	WecA	Westringia 'Aussie Box'		Cha	Chrysocephalum apiculatum
	LocoM	Lomandra confertifolia ssp. rubiginosa mist		DirE	Dichondra repens 'Emerald Falls'
	MisA	Miscanthus sinensis 'Adagio'		Roop	Rosmarinus officinalis 'Prostratus'

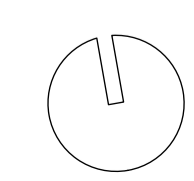
This copied document to be made available for the sole purpose of enabling its consideration and review as part of a planning process under the Planning and Environment Act 1987. The document must not be used for any purpose which may breach any copyright

ADVERTISED PLAN

NOTE:
 L1 - 86m2 planters to common area
 L2 - 2.4m2 planters to common area
 L3 - 2.4m2 planters to common area
 L4 - 2.4m2 planters to common area
 L7 - 46m2 planters to common area
 TOTAL: 139.2m2 planters to common areas

Planting Plan - Level 4
 Scale: 1:100

These are conceptual drawings only. Acre Landscape Architecture Studio will not be held responsible for any structural works constructed from these drawings. All dimensions to be confirmed on site by contractor prior to commencement of works.





PLANT SCHEDULE

CODE	QTY	BOTANICAL NAME	COMMON NAME	*HEIGHT	*SPREAD	SIZE	REMARKS
Trees							
Shrubs							
AccL	10	Acacia cognata 'Limelight'	Acacia Limelight	0.8 m	1 m	140 mm	
Acg	8	Acacia glaucoptera	Flat Wattle	1 m	2 m	300 mm	
Coa	4	Correa alba	White Correa	1.5 m	1.5 m	300 mm	
CocY	4	Cotinus coggygria 'Young Lady'	Young Lady Smokebush	1.5 m	1.5 m	300 mm	
Pro	3	Prostanthera rotundifolia	Native Oregano	1.5 m	1 m	300 mm	
RueL	21	Russelia equisetiformis 'Lemon Falls'	Firecracker Plant	1 m	1.5 m	300 mm	
Tep	4	Tetrapanax papyrifer	Rice Paper Plants	4 m	2.5 m	300 mm	
WeCA	11	Westringia cultivar 'Aussie Box'	Westringia Aussie Box	0.75 m	0.75 m	300 mm	
Perennials							
AcMo	32	Achillea 'Mondpagode'	Achillea 'Mondpagode'	1.5 m	0.5 m	140 mm	
Grasses							
Dij	40	Dianella caerulea 'Little Jess'	Native Flax	0.4 m	0.4 m	140 mm	(n)
LocoM	20	Lomandra confertifolia ssp rubiginosa 'Mist'	Rubiginosa mist	0.6 m	0.6 m	140 mm	
Lsh	36	Lomandra fluviatilis 'Shara'	Spiny-headed mat rush	0.6 m	0.6 m	140 mm	(n)
Misa	10	Miscanthus sinensis 'Adagio'	Dwarf Feather Grass	1 m	1 m	140 mm	
Groundcovers							
CagC	30	Casuarina glauca 'Cousin It'	Casuarina 'Cousin It'	0.2 m	1.5 m	140 mm	
DirE	52	Dichondra repens 'Emerald Falls'	Kidney Weed	0.05 m	1 m	140 mm	
RoopP	33	Rosmarinus officinalis 'Prostratus'	Prostrate Rosemary	0.2 m	1 m	140 mm	
Succulents							
Climbers							
Ferns / Shade Perennials							
Total:				318			

Ref Image	Code	Description	Ref Image	Code	Description
	AccL	Acacia cognata 'Limelight'		AcMo	Achillea 'Mondpagode'
	Acg	Acacia glaucoptera		Dij	Dianella caerulea 'Little Jess'
	Coa	Correa alba		LocoM	Lomandra confertifolia ssp. rubiginosa mist
	CocY	Cotinus coggygria 'Young Lady'		Lsh	Lomandra fluviatilis 'Shara'
	Pro	Prostanthera rotundifolia		Misa	Miscanthus sinensis 'Adagio'
	RueL	Russelia equisetiformis 'Lemon Falls'		CagC	Casuarina glauca 'Cousin It'
	Tep	Tetrapanax papyrifer		DirE	Dichondra repens 'Emerald Falls'
	WeCA	Westringia 'Aussie Box'		Roop	Rosmarinus officinalis 'Prostratus'

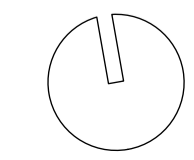
This copied document to be made available for the sole purpose of enabling its consideration and review as part of a planning process under the Planning and Environment Act 1987. The document must not be used for any purpose which may breach any copyright

ADVERTISED PLAN

Planting Plan - Level 7
Scale: 1:100

NOTE:
L1 - 86m2 planters to common area
L2 - 2.4m2 planters to common area
L3 - 2.4m2 planters to common area
L4 - 2.4m2 planters to common area
L7 - 46m2 planters to common area
TOTAL: 139.2m2 planters to common areas

These are conceptual drawings only. Acre Landscape Architecture Studio will not be held responsible for any structural works constructed from these drawings. All dimensions to be confirmed on site by contractor prior to commencement of works.



PLANT SCHEDULE

CODE	QTY	BOTANICAL NAME	COMMON NAME	*HEIGHT	*SPREAD	SIZE	REMARKS
Trees							
Coci	3	Corymbia citriodora 'Scentuous'	Dwarf Lemon Scented Gum	7 m	3 m	150 Ltr	
Lel	3	Leptospermum laevigatum	Coastal Tea Tree	5 m	3 m	150 Ltr	
Shrubs							
AccL	10	Acacia cognata 'Limelight'	Acacia Limelight	0.8 m	1 m	140 mm	
Acg	30	Acacia glaucoptera	Flat Wattle	1 m	2 m	300 mm	
AdsD	23	Adenanthos sericeus 'Dwarf Woolly Bush'	Dwarf Woolly Bush	0.8	0.8	300 mm	
Coa	4	Correa alba	White Correa	1.5 m	1.5 m	300 mm	
Cob	18	Correa baeuerlenii	Chef's Cap Correa	1.5 m	1.5 m	300 mm	
CocY	4	Cotinus coggygria 'Young Lady'	Young Lady Smokebush	1.5 m	1.5 m	300 mm	
Pro	3	Prostanthera rotundifolia	Native Oregano	1.5 m	1 m	300 mm	
RueL	46	Russelia equisetiformis 'Lemon Falls'	Firecracker Plant	1 m	1.5 m	300 mm	
Tep	4	Tetrapanax papyrifer	Rice Paper Plants	4 m	2.5 m	300 mm	
WecA	45	Westringia cultivar 'Aussie Box'	Westringia Aussie Box	0.75 m	0.75 m	300 mm	
WefG	79	Westringia fruticosa 'Grey Box'	Native Rosemary	0.4 m	0.4 m	300 mm	
Perennials							
AcMo	32	Achillea 'Mondpagode'	Achillea 'Mondpagode'	1.5 m	0.5 m	140 mm	
Grasses							
Dit	68	Dianella tasmanica	Tasman Flax Lily	0.7 m	0.7 m	140 mm	
Dlj	40	Dianella caerulea 'Little Jess'	Native Flax	0.4 m	0.4 m	140 mm	(n)
LocoM	168	Lomandra confertifolia ssp rubiginosa 'Mist'	Rubiginosa mist	0.6 m	0.6 m	140 mm	
LoI	43	Lomandra longifolia	Spiny-head Mat-rush	1 m	1 m	140 mm	
Lsh	36	Lomandra fluviatilis 'Shara'	Spiny-headed mat rush	0.6 m	0.6 m	140 mm	(n)
MisA	17	Miscanthus sinensis 'Adagio'	Dwarf Feather Grass	1 m	1 m	140 mm	
Pol	133	Poa labillardierei	Common Tussock Grass	1 m	0.6 m	140 mm	
Groundcovers							
CagC	99	Casuarina glauca 'Cousin It'	Casuarina 'Cousin It'	0.2 m	1.5 m	140 mm	
Cha	7	Chrysocephalum apiculatum	Yellow Buttons	0.3 m	0.5 m	140 mm	
DirE	109	Dichondra repens 'Emerald Falls'	Kidney Weed	0.05 m	1 m	140 mm	
Rhb	1	Rhipsalis baccifera	Mistletoe Cactus	0.2 m	1 m	140 mm	
RooP	71	Rosmarinus officinalis 'Prostratus	Prostrate Rosemary	0.2 m	1 m	140 mm	
Climbers							
Ferns / Shade Perennials							
Total:	1096				* = maintained		

GENERAL LANDSCAPE SPECIFICATIONS

1. PLANTS - Planting to be carried out with horticultural best practices. All species are to conform with specified species, sizes, quantities and locations as indicated on planting plans, unless otherwise indicated by the landscape architect. In the case of required species substitution, approval must be sought out by the landscape architect before ordering of stock. Plant stock is to be vigorous and undamaged, appropriately established for the specified pot size, of good form, not root bound and be free of diseases, pests and weeds. Plant placement to be confirmed by the landscape architect unless otherwise stated.

2. FERTILISING - At the time of planting, an application of a suitable fertiliser and conditioner, per the plant species and soil media, are to be applied as per the manufacturers specifications. Slow and quick release fertilisers are to be applied to lawn areas and well watered in at time of planting.

3. POTS - Apply Mapei acrylic waterproofing membrane to internal walls and floor of all pots. Irrigation lines to be installed through base of pots. Install double layer of drainage cell panels to base of pots. Geofabric to be laid above drainage cells. Void filling media to be applied through central zone of pots where suitable. Planting media to be a blend of Debco premium potting mix (70%), vermiculite (15%) and peat moss (15%) with an application of slow-release fertiliser.

GARDENS IN NATURAL GROUND

1. EXCAVATION - All garden areas are to be trimmed to a minimum depths of 220mm below finished levels, allowing for the application of top soil and mulch meeting with finished surface levels unless otherwise specified.

2. WEEDS AND EXISTING VEGETATION - All weeds and unwanted plants are to be thoroughly removed, including roots and rhizomes. Controlled application of herbicides to be used where required with appropriate best practices in accordance with manufacturer instructions. Care must be taken to ensure all trees to be retained are not damaged in accordance with Australian Standard AS 4970-2009. All trees to be removed shall be stump ground.

2. SOIL PREPARATION - All garden areas are to have building materials, crushed rock and any other material restrictive to plant growth removed. All garden area subsoils are to be cultivated and aerated to a depth of 200mm, with an application of gypsum applied to all heavy clay areas at the rate of 1.5kg per sq. meter

3. TOP SOIL - All garden areas to have imported 5 way organic garden soil, with a neutral pH, laid over prepared subsoils to a minimum depth of 150mm. All imported topsoil is to be free from rubble, weeds and other materials damaging to plant growth.

4. MULCH - All garden areas to have an even 50mm spread layer of 'Surecrop' compost applied unless otherwise specified. Mulch to be kept back from plants stems to prevent collar rot.

8. GARDEN BEDS - Cultivate to a depth of 125mm and import 150mm layer of 5 way organic topsoil / compost blend. Ensure stormwater wastes are installed in all planters, in accordance with Civil Engineer's specifications, lay non-shrink screed with 1 in 50 falls to wastes. Apply waterproofing membrane to buried surfaces in accordance with waterproofing specialist's specifications. Line floors of planters with AG drainage cell panels and walls with black core flute protective boards fill planters with potting mix (75%), blended with 'Surecrop' compost (25%). Both available from Fulton Garden supplies. Spread layer of 'Surecrop' compost after plant installation. All beds to be irrigated as per irrigation specialist specification.

GARDENS ABOVE SLAB

1. WATER PROOFING - Apply waterproofing membrane to all internal planter surfaces.

2. WATERPROOFING PROTECTION - LPDE layer at minimum 200 microns for horizontal surfaces, and Corflute Protection Board Layer to vertical surfaces is to be applied over waterproofing membrane on gardens installed directly above or against roof or building structural surfaces.

3. DRAINAGE - Install Atlantis Flocell 20 drainage cell laid as a base above waterproofing.

4. GEOFABRIC - Bidim A14-A24 Geofabric to be laid above drainage cell.

5. VOID FILLER - Atlantis Structural Void filling media is to be applied through planters where necessary, as specified in typical details.

5. SOIL - Fytogreen Hydrocell 40 Lightweight Planter Media to depths as specified in typical details. Garden beds are to be filled with the required soil amounts a minimum of 2 months prior to the addition of plants and mulch, with irrigation activated a minimum 2 times a week during this period. Soil settlement to be observed at the time of planting, with replenishment to the appropriate height where required.

6. MULCH - Selected Gravel Screenings as specified in material schedule, to a minimum depth of 50mm.

7. IRRIGATION - Drip Irrigation to be installed below mulch, or 50mm beneath finished garden surface.

**ADVERTISED
PLAN**

This copied document to be made available for the sole purpose of enabling its consideration and review as part of a planning process under the Planning and Environment Act 1987. The document must not be used for any purpose which may breach any copyright

Elevations

This copied document to be made available
for the sole purpose of enabling
its consideration and review as
part of a planning process under the
Planning and Environment Act 1987.
The document must not be used for any
purpose which may breach any
copyright

ADVERTISED
PLAN

This copied document to be made available for the sole purpose of enabling its consideration and review as part of a planning process under the Planning and Environment Act 1987. The document must not be used for any purpose which may breach any copyright



ADVERTISED
PLAN

This copied document to be made available for the sole purpose of enabling its consideration and review as part of a planning process under the Planning and Environment Act 1987. The document must not be used for any purpose which may breach any copyright



East Elevation
Scale: 1:100

ADVERTISED PLAN

TITLE BOUNDARY

SETBACK

SETBACK

TITLE BOUNDARY

This copied document to be made available for the sole purpose of enabling its consideration and review as part of a planning process under the Planning and Environment Act 1987. The document must not be used for any purpose which may breach any copyright



South Elevation
Scale: 1:100

LYGON STREET

ADVERTISED
PLAN

SITE BOUNDARY

SETBACK

SETBACK

SITE BOUNDARY

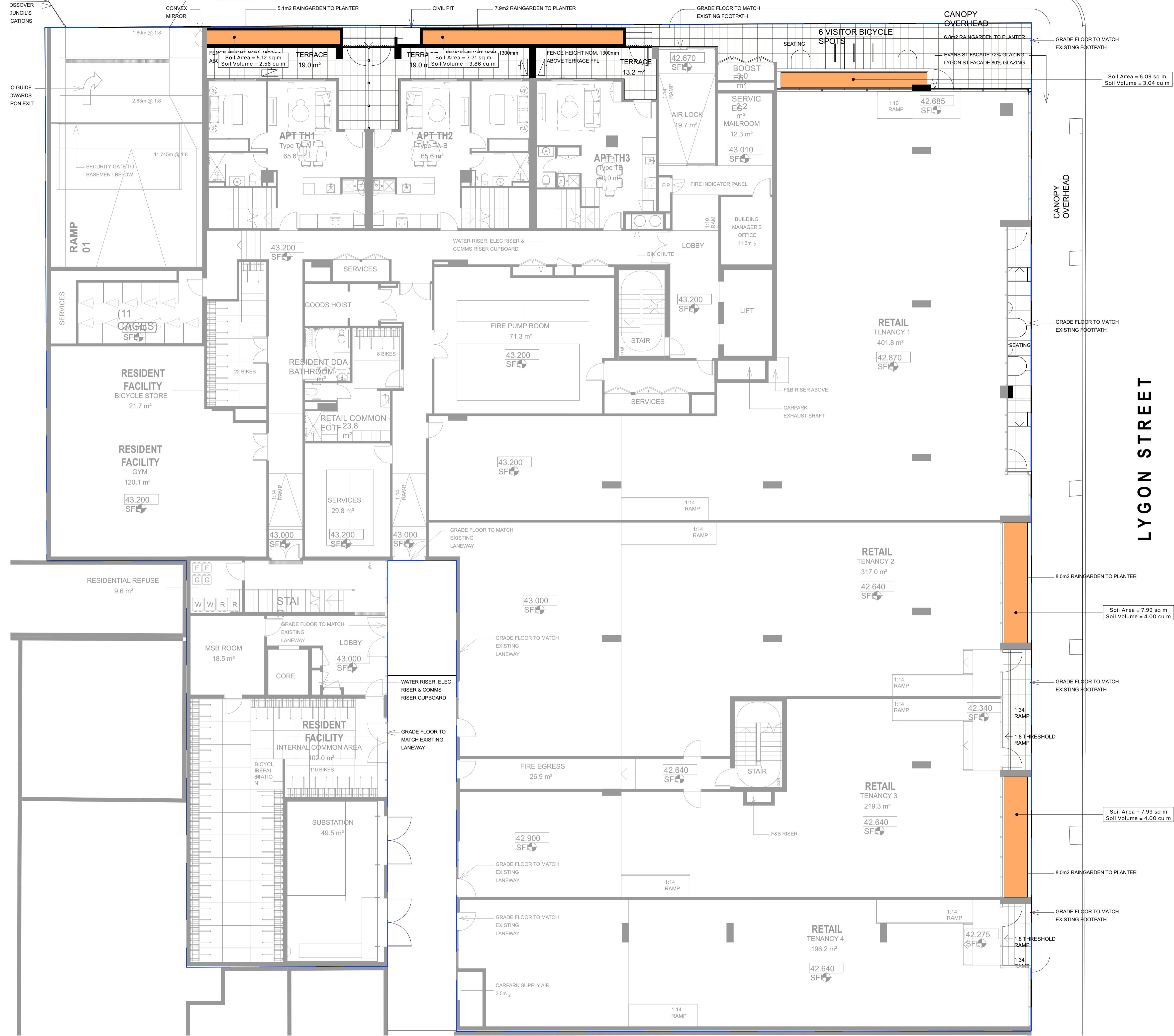
This copied document to be made available for the sole purpose of enabling its consideration and review as part of a planning process under the Planning and Environment Act 1987. The document must not be used for any purpose which may breach any copyright

EVANS
STREET

Scale: 1:100
West Elevation



This copied document to be made available
for the sole purpose of enabling
its consideration and review as
part of a planning process under the
Planning and Environment Act 1987.
The document must not be used for any
purpose which may breach any
copyright

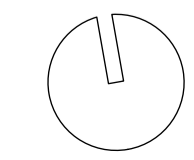


ADVERTISED PLAN

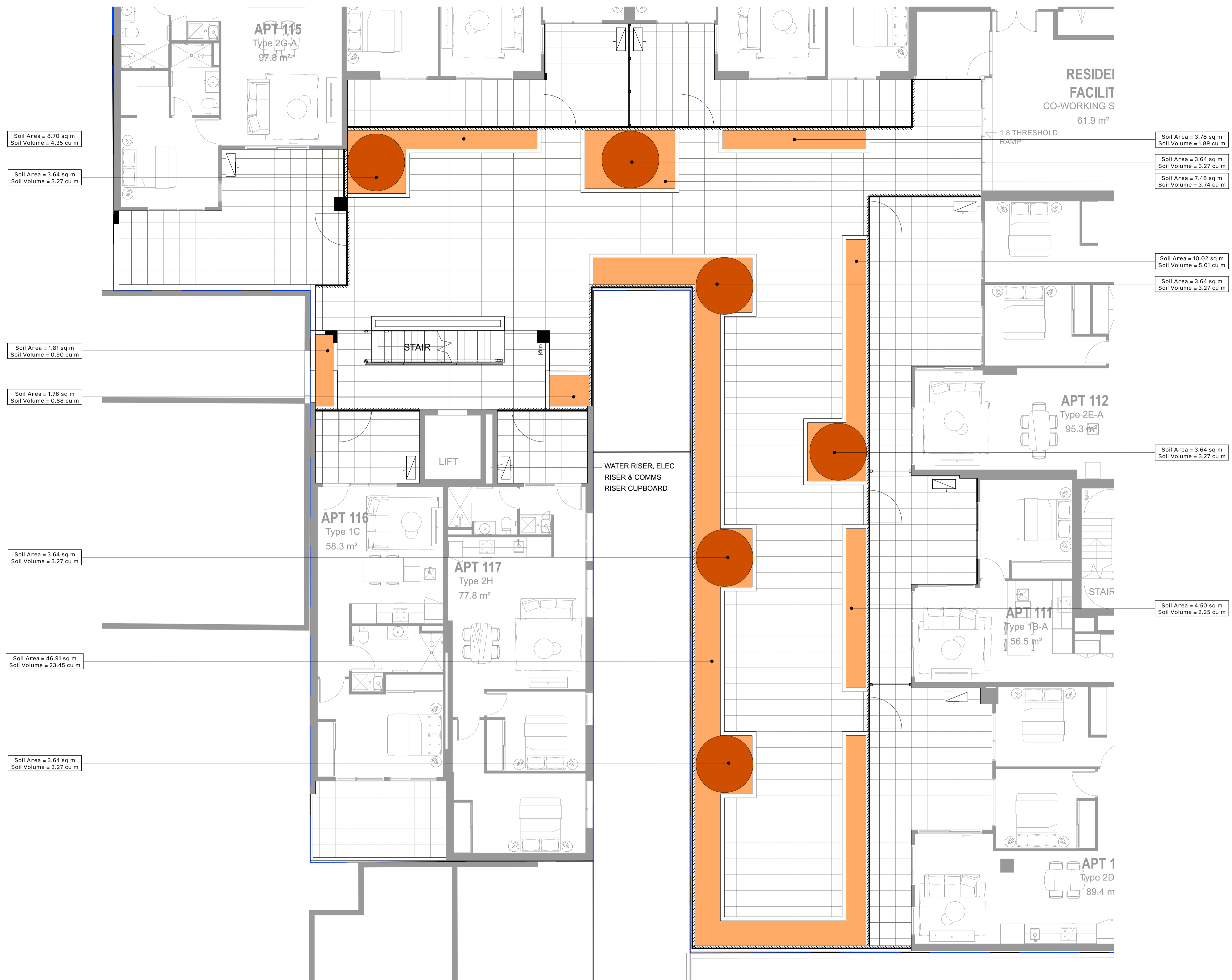
This copied document to be made available for the sole purpose of enabling its consideration and review as part of a planning process under the Planning and Environment Act 1987. The document must not be used for any purpose which may breach any copyright

Soil Volume Plan - Ground Floor
Scale: 1:100

SOIL DEPTH LEGEND
500mm



ADVERTISED PLAN



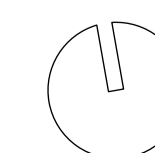
This copied document to be made available for the sole purpose of enabling its consideration and review as part of a planning process under the Planning and Environment Act 1987. The document must not be used for any purpose which may breach any copyright

Soil Volume Plan - Level 1
Scale: 1:75

SOIL DEPTH LEGEND

- 500mm
- 900mm (approx.)

NOTE:
L1 - 86m2 planters to common area
L2 - 2.4m2 planters to common area
L3 - 2.4m2 planters to common area
L4 - 2.4m2 planters to common area
L7 - 46m2 planters to common area
TOTAL: 139.2m2 planters to common areas



This copied document to be made available for the sole purpose of enabling its consideration and review as part of a planning process under the Planning and Environment Act 1987. The document must not be used for any purpose which may breach any copyright



Soil Volume Plan - Level 2
Scale: 1:100

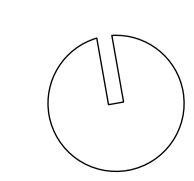
ADVERTISED PLAN

SOIL DEPTH LEGEND

500mm

NOTE:
L1 - 86m2 planters to common area
L2 - 2.4m2 planters to common area
L3 - 2.4m2 planters to common area
L4 - 2.4m2 planters to common area
L7 - 46m2 planters to common area
TOTAL: 139.2m2 planters to common areas

These are conceptual drawings only. Acre Landscape Architecture Studio will not be held responsible for any structural works constructed from these drawings. All dimensions to be confirmed on site by contractor prior to commencement of works.



This copied document to be made available for the sole purpose of enabling its consideration and review as part of a planning process under the Planning and Environment Act 1987. The document must not be used for any purpose which may breach any copyright



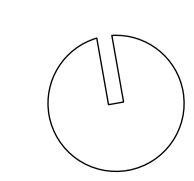
ADVERTISED PLAN

Soil Volume Plan - Level 3
Scale: 1:100

SOIL DEPTH LEGEND

500mm

NOTE:
L1 - 86m2 planters to common area
L2 - 2.4m2 planters to common area
L3 - 2.4m2 planters to common area
L4 - 2.4m2 planters to common area
L7 - 46m2 planters to common area
TOTAL: 139.2m2 planters to common areas



Soil Area = 3.11 sq m
Soil Volume = 1.55 cu m

Soil Area = 6.41 sq m
Soil Volume = 3.20 cu m

Soil Area = 7.26 sq m
Soil Volume = 3.63 cu m

Soil Area = 0.84 sq m
Soil Volume = 0.42 cu m

This copied document to be made available for the sole purpose of enabling its consideration and review as part of a planning process under the Planning and Environment Act 1987. The document must not be used for any purpose which may breach any copyright



Soil Area = 4.62 sq m
Soil Volume = 2.31 cu m

Soil Area = 3.27 sq m
Soil Volume = 1.64 cu m

Soil Area = 2.55 sq m
Soil Volume = 1.27 cu m

Soil Area = 4.46 sq m
Soil Volume = 2.23 cu m

Soil Area = 1.57 sq m
Soil Volume = 0.78 cu m

Soil Area = 3.88 sq m
Soil Volume = 1.94 cu m

Soil Area = 3.23 sq m
Soil Volume = 1.61 cu m

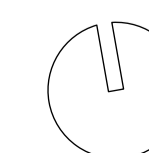
ADVERTISED PLAN

SOIL DEPTH LEGEND

500mm

NOTE:
L1 - 86m2 planters to common area
L2 - 2.4m2 planters to common area
L3 - 2.4m2 planters to common area
L4 - 2.4m2 planters to common area
L7 - 46m2 planters to common area
TOTAL: 139.2m2 planters to common areas

Soil Volume Plan - Level 4
Scale: 1:100



Soil Area = 3.80 sq m
Soil Volume = 1.90 cu m

Soil Area = 3.68 sq m
Soil Volume = 1.84 cu m

Soil Area = 5.54 sq m
Soil Volume = 2.77 cu m

Soil Area = 4.52 sq m
Soil Volume = 2.26 cu m

Soil Area = 5.41 sq m
Soil Volume = 2.70 cu m

Soil Area = 3.50 sq m
Soil Volume = 1.75 cu m

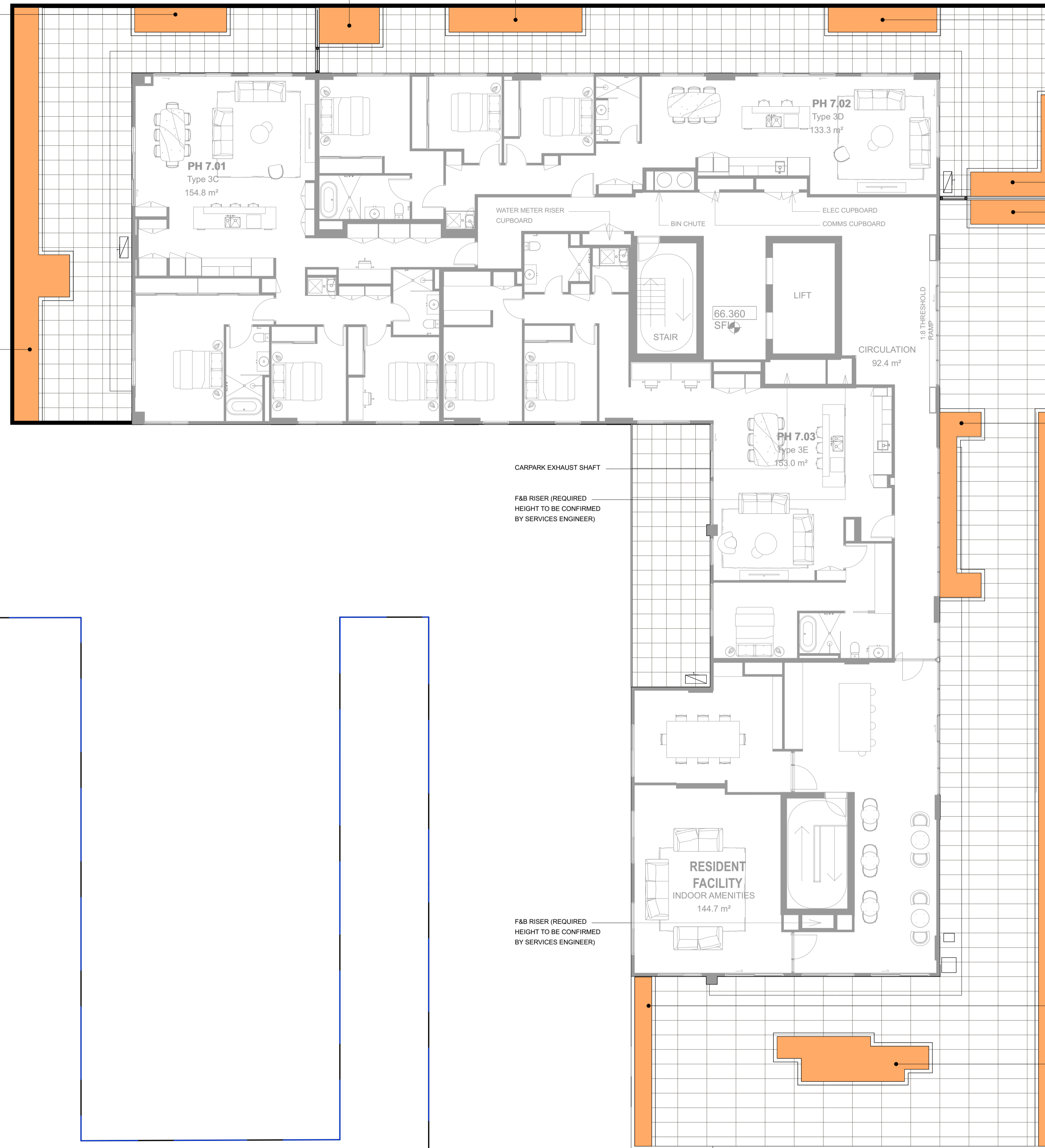
Soil Area = 7.34 sq m
Soil Volume = 3.67 cu m

Soil Area = 21.17 sq m
Soil Volume = 10.58 cu m

Soil Area = 4.88 sq m
Soil Volume = 2.44 cu m

Soil Area = 9.15 sq m
Soil Volume = 4.58 cu m

Soil Area = 19.45 sq m
Soil Volume = 9.73 cu m



ADVERTISED PLAN

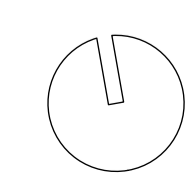
This copied document to be made available for the sole purpose of enabling its consideration and review as part of a planning process under the Planning and Environment Act 1987. The document must not be used for any purpose which may breach any copyright

Soil Volume Plan - Level 7
Scale: 1:100

SOIL DEPTH LEGEND

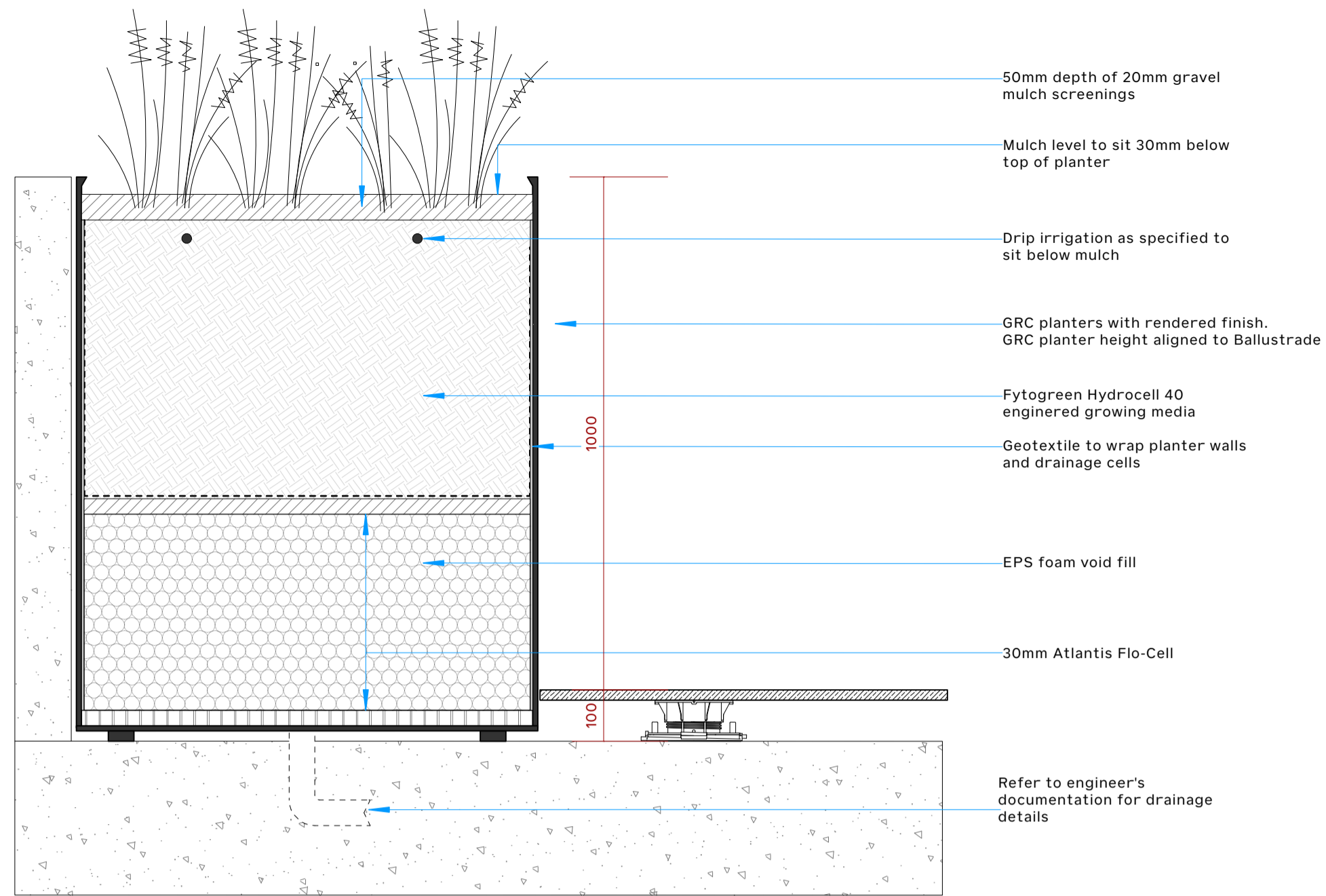
500mm

NOTE:
L1 - 86m2 planters to common area
L2 - 2.4m2 planters to common area
L3 - 2.4m2 planters to common area
L4 - 2.4m2 planters to common area
L7 - 46m2 planters to common area
TOTAL: 139.2m2 planters to common areas



Typical Planters Details

This copied document to be made available
for the sole purpose of enabling
its consideration and review as
part of a planning process under the
Planning and Environment Act 1987.
The document must not be used for any
purpose which may breach any
copyright

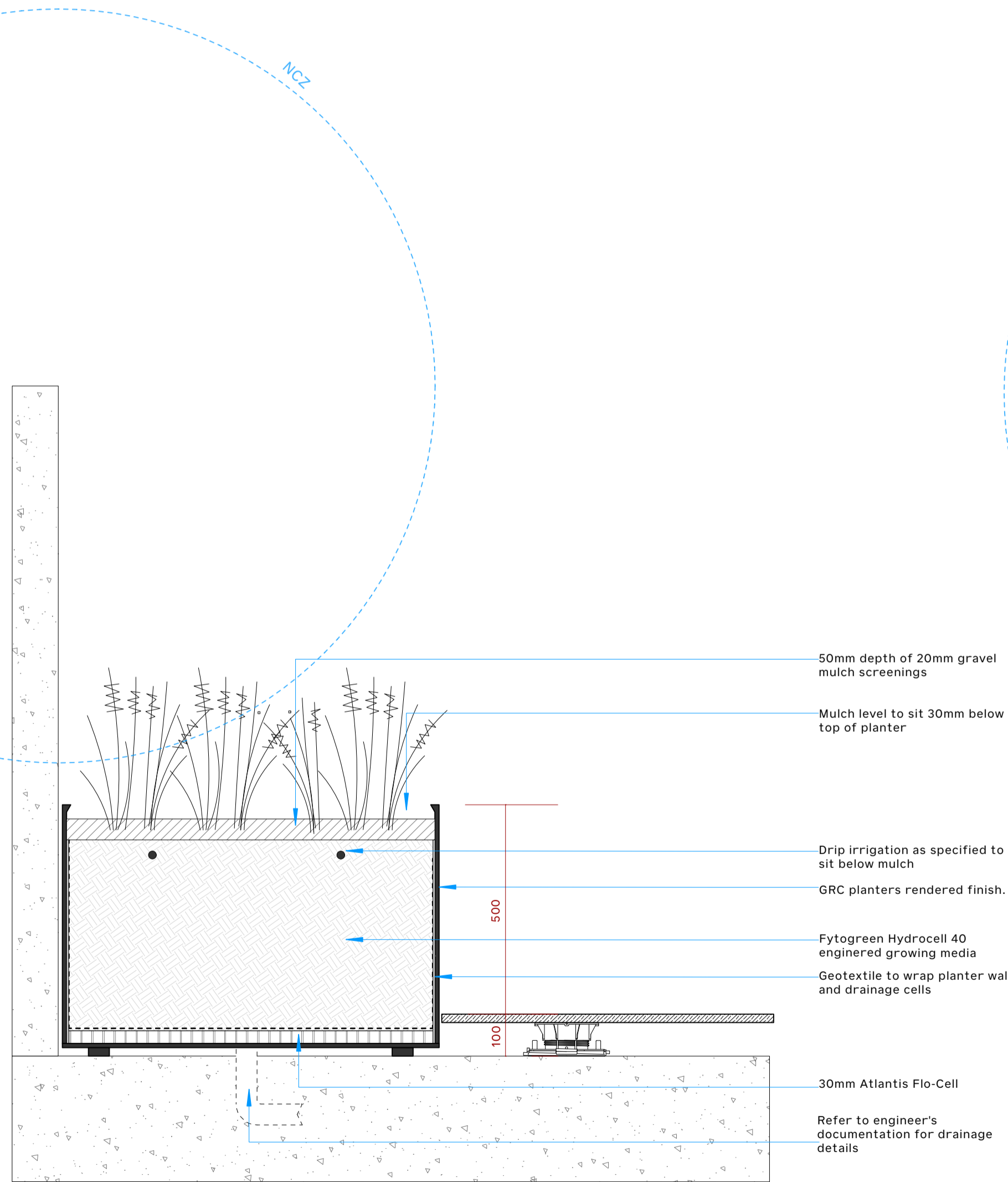


Perimeter Planter H=1100mm Void Fill - Typical Detail
Scale: 1:10

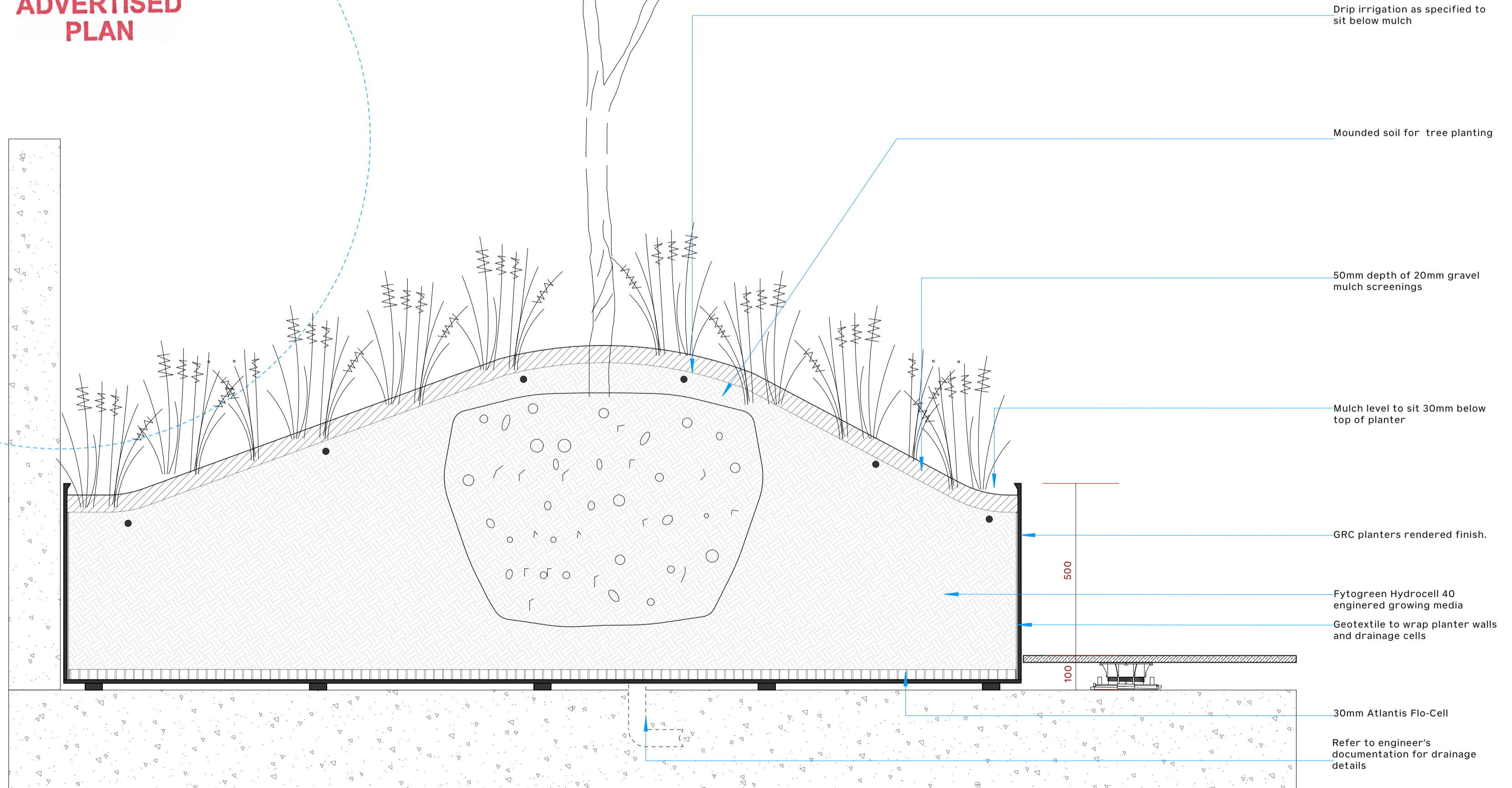


This copied document to be made available for the sole purpose of enabling its consideration and review as part of a planning process under the Planning and Environment Act 1987. The document must not be used for any purpose which may breach any copyright

ADVERTISED PLAN



Planter H=600mm - Typical Detail
Scale: 1:10



Planter H=600mm with mounded soil for Tree - Typical Detail
Scale: 1:10

The landscape is to be maintained by the landscape contractor for a period of 4 weeks and is then passed over to permanent gardener. Maintenance works to include, but not be limited to the following: weeding, removal of any dead foliage, re-mulching as required, clipping of plants, fertilising plants, replacement of any dead plant material, ensure irrigation system is working properly and where/if required, the mowing & maintenance of lawns.

1.0 AIMS & OBJECTIVES

This Landscape Maintenance Plan has been prepared to ensure the necessary scope and level of maintenance is achieved to ensure the plants remain healthy and other landscape elements are maintained in a safe, functional, and attractive condition. The Plan applies a coordinated and consistent approach to landscape maintenance, both in terms of the techniques used and the frequency of works.

1.1 SCOPE

This Landscape Maintenance applies to all landscape works shown on the landscape plans and includes:

- Areas planted with trees, shrubs, climbers, and groundcover plants.
- Plants in containers.
- Other landscape works.

The scope of maintenance works, and their timing are detailed in Section 2. They generally include but not necessarily restricted to:

- Maintenance of plants by fertilising, pest control, pruning, weed removal and replacement of dead plants.
- Pruning and trimming that reflects the natural growth habit of individual plant species, with radical pruning avoided.
- Surface mulch is to be replenished as required to maintain a consistent depth in accordance with the landscape detail drawings prepared.
- Drainage pits are to be cleared of mulch and other material regularly so that all pits are cleared when observed at monthly intervals or after significant storm events.
- Weeds are to be removal from all paved area and compacted gravel.
- Removal of plant litter from paths and garden areas where required.
- Keeping a logbook of maintenance works.
- Monthly and yearly maintenance reports.

The following items are excluded from this Maintenance Plan and will be the responsibility of Owners Corporation / Body Corporate Committee.

- Watering of plants.
- Non plant rubbish litter.

All work shall be carried out in accordance with standard horticultural practice. Provide two days' notice to Owners Corporation / Body

Corporate Committee for the following operations:

- Each site maintenance visit.
- Application of fertiliser.
- Application of pesticide/fungicide.
- Application of herbicide.

1.2 RECORD KEEPING & REPORTING

The landscape maintenance works that are carried out in accordance with the schedule on Section 2 are to be recorded in a logbook by the Contractor responsible for landscape maintenance. The records shall include details of materials and procedures used as well as time and method of application. A record of inclement weather should also be kept verifying inability to carry out work within the specified time frame. A summary report of landscape maintenance works completed is to be prepared at the end of each month and annually by the Contractor.

1.3 MAINTENANCE OF PLANTING AREAS

1.3.1. Weeding

Prevent reproduction of weeds by removal of seedlings and established weeds before seed set. This work should be carried out regularly so that the planted and mulched areas are weed free when observed at monthly intervals.

1.3.2. Fertilising

Soil testing is to be undertaken at the commencement of the maintenance contract and shall include taking samples from a cross section of planting areas.

Slow-release fertiliser selected to take into account the soil testing results and the in-situ plants should be applied at the frequency nominated in the Landscape Maintenance Schedule and in accordance with the manufacturer's recommended rate. Soil pH should be maintained between 5.5 and 7.

1.3.3. Pest and Disease Control

Avoid use of chemical sprays. If chemical control is considered necessary, these should be mixed and applied in strict accordance with manufacturer's directions. Do not spray in windy or extreme weather.

1.3.4. Pruning and Trimming

Pruning should reflect the natural growth, flowering and regrowth habit of the individual species. Generally, prune after flowering. Tip pruning involving the removal of the top 25mm or growing tip of each branch, should be used with shrubs and groundcover to encourage development of new shoots during the active growing season. Be careful not to remove the buds before the flowering season in those plants that have terminal flowers. Notification of requirement for structural tree work including the removal of large branches should be made to the Owners Corporation / Body Corporate Committee

1.3.5. Plant Replacement

All plants that have died or failed (lost more than 50% of their normal foliage cover) shall be replaced with the same species and commercially available size as the plant to be replaced. Generally, plant material shall be uniformly high-quality stock equal to best available for 'retail sale'. The root systems shall be balanced in relation to the size of the plant. Plants shall be healthy well grown, hardened off specimens of good shape and free from pests and diseases.

2.0 SCHEDULE OF MAINTENANCE WORKS

The following schedule summarises the minimum landscape maintenance tasks and timing requirements for the various categories of maintenance activities. Allowance should be made for maintenance according to seasonal conditions.

2.1 Weeding - Timeframe monthly

- Weed garden areas manually or with approved herbicide.
- Prior approval required for Herbicide use. Approved Herbicide use to be in accordance with regulation rates and manufacturer's recommendation. Protect plants from overspray and avoid if rain is likely within 12-hour period

2.2 Leaf Litter Removal - Timeframe monthly

- Do not remove leaf litter from planted areas unless depth of litter is impacting on plant growth.
- Remove leaf litter from pathways

2.3 Mulching - Timeframe Spring

- Reapply mulch to maintain to a depth of 75mm
- Ensure that the specified mulch, especially on the higher levels is suitable and able to withstand environmental conditions such as wind erosion.

2.4 Plant Fertiliser - Timeframe Spring

- Fertilise all plants at specified rates based on soil testing results
- Prior approval required for fertiliser use.
- Slow release fertiliser N:P:K ratio- 18:3:10 at manufacturer's recommended rate per plant.
- Initial fertilising at planting based on soil testing results

2.5 Pest & Disease Control - Timeframe Monthly / As required

- Check for incidence of fungal and insect attack
- Avoid use of chemical sprays
- Apply appropriate treatment for fungal and insect attack if necessary subject to approval
- Prior approval required of chemical to be applied

2.6 Pruning & Trimming - Timeframe Monthly / As required

- Prune overgrown material in the garden annually when the plants are dormant. Remove dead plant material and deadhead flowers. This will encourage dense, new vegetative growth.
- Climbers - Prune long leaders which cannot be reattached to climbing frame.
- Shrubs & groundcover - Tip prune to encourage density. Length removed depending on vigour of previous plant growth
- Trees - Remove deadwood and tip prune fruit trees if required. Notify in writing Management any perceived need for tree structural work

2.7 Plant Removal & Replacement - Timeframe Monthly

- Inspect for failed or dying plants requiring replacement and record probable cause
- Replant after dead or failed plant removal
- Densities, sizes & species used are to be in accordance with those specified in Landscape Plans

2.8 Weed Control in Gravel - Timeframe As required

- Remove weeds from gravel areas manually or with approved herbicide in accordance with manufacturer's recommendation
- Prior approval required for Herbicide use.

**ADVERTISED
PLAN**

This copied document to be made available for the sole purpose of enabling its consideration and review as part of a planning process under the Planning and Environment Act 1987. The document must not be used for any purpose which may breach any copyright