



This copied document to be made available for the sole purpose of enabling its consideration and review as part of a planning process under the Planning and Environment Act 1987. The document must not be used for any purpose which may breach any copyright

# Knowles Group

## Arcare Mitchman (VIC) – External Signage Proposal

Version 1

**braggs.**  
signage

experience the difference.

# Revisions

Version	Date / Description	Drawn by
01	25/06/2025 Initial artwork proof	JM

Version	Date / Description	Drawn by

--	--	--

--	--	--

**This copied document to be made available for the sole purpose of enabling its consideration and review as part of a planning process under the Planning and Environment Act 1987. The document must not be used for any purpose which may breach any copyright**

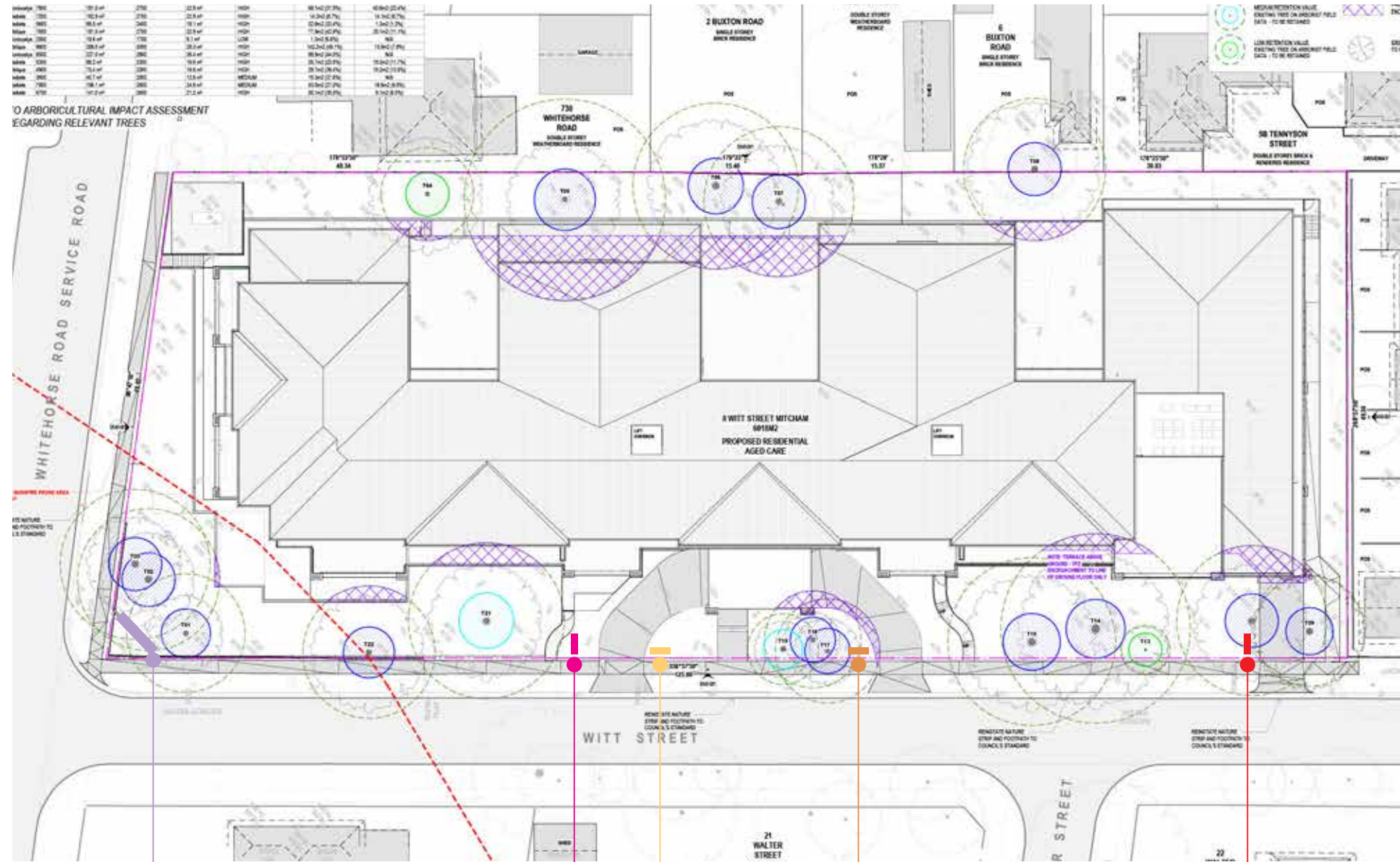
**ADVERTISED  
PLAN**



# Ground Floor

## Signage Locations

- Arcare Large Freestanding @ 2600x1640
- Arcare Large Pylon w/ Wayfinding @ 2900x1370
- Exit Only Sign @ 400x200
- Entry Only Sign @ 400x200
- Arcare Large Pylon w/ Wayfinding @ 2900x1370



This copied document to be made available for the sole purpose of enabling its consideration and review as part of a planning process under the Planning and Environment Act 1987. The document must not be used for any purpose which may breach any copyright

Large Freestanding

Arcare Stand. pylon

Entry Only Sign

Exit Only Sign

Arcare Stand. pylon

**ADVERTISED PLAN**

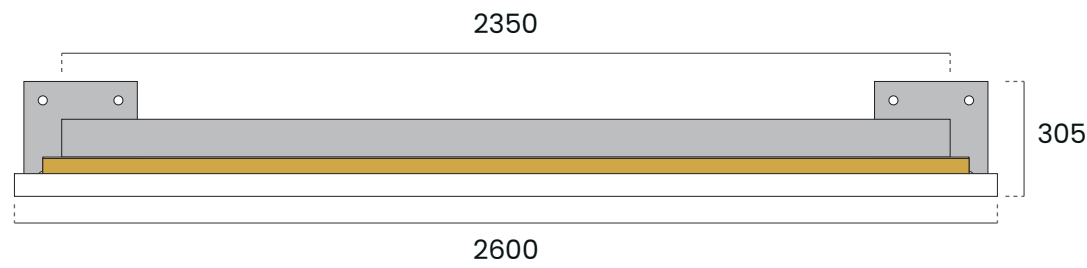


**Landscape Freestanding Sign (single sided)**

**Description**

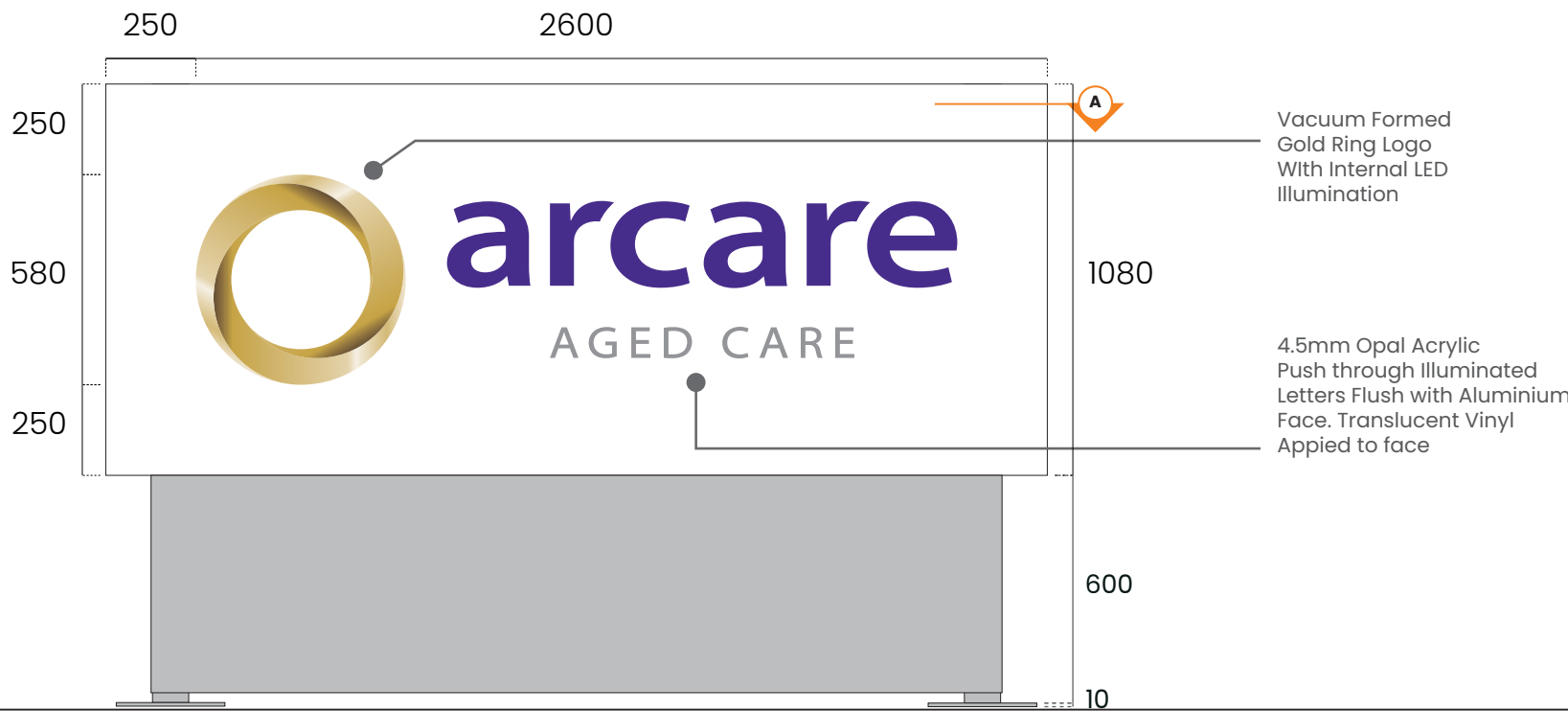
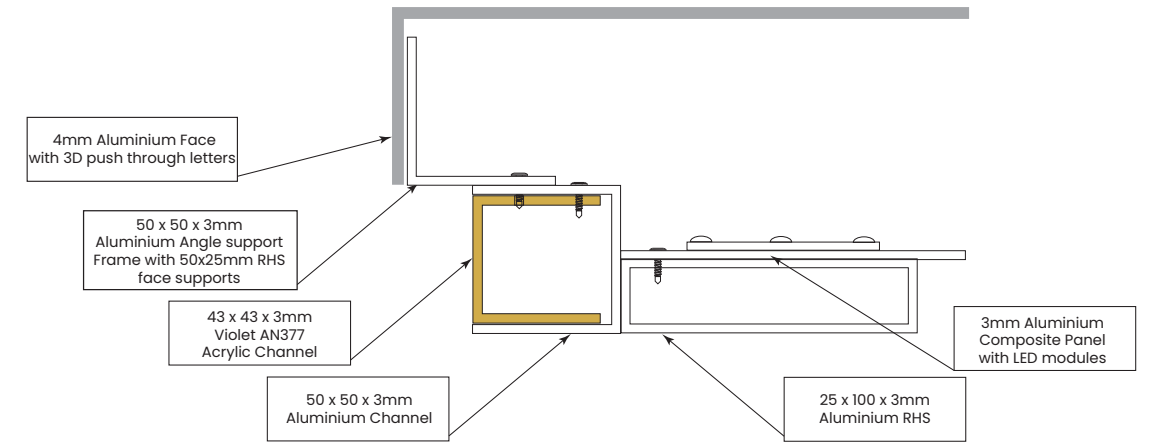
4mm aluminium face with 60mm returns and white powder coat finish  
 Vacuum formed gold ring logo with internal LED illumination  
 Text intra cut illuminated 4.5mm opal acrylic flush with face  
 All illumination by LED includes transformer

This copied document to be made available for the sole purpose of enabling its consideration and review as part of a planning process under the Planning and Environment Act 1987. The document must not be used for any purpose which may breach any copyright



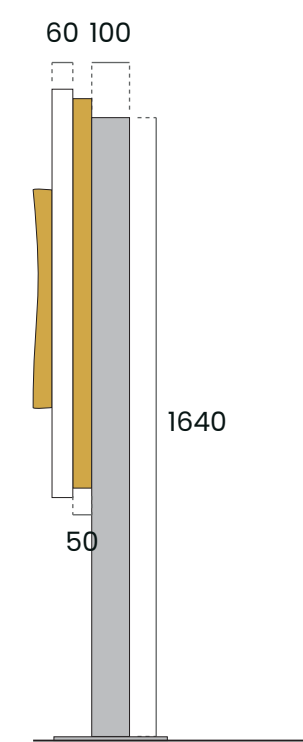
**Top View**

Scale 1:20@A3



**Front View**

Scale 1:20@A3



**Side View**

Scale 1:20@A3

**ADVERTISED PLAN**

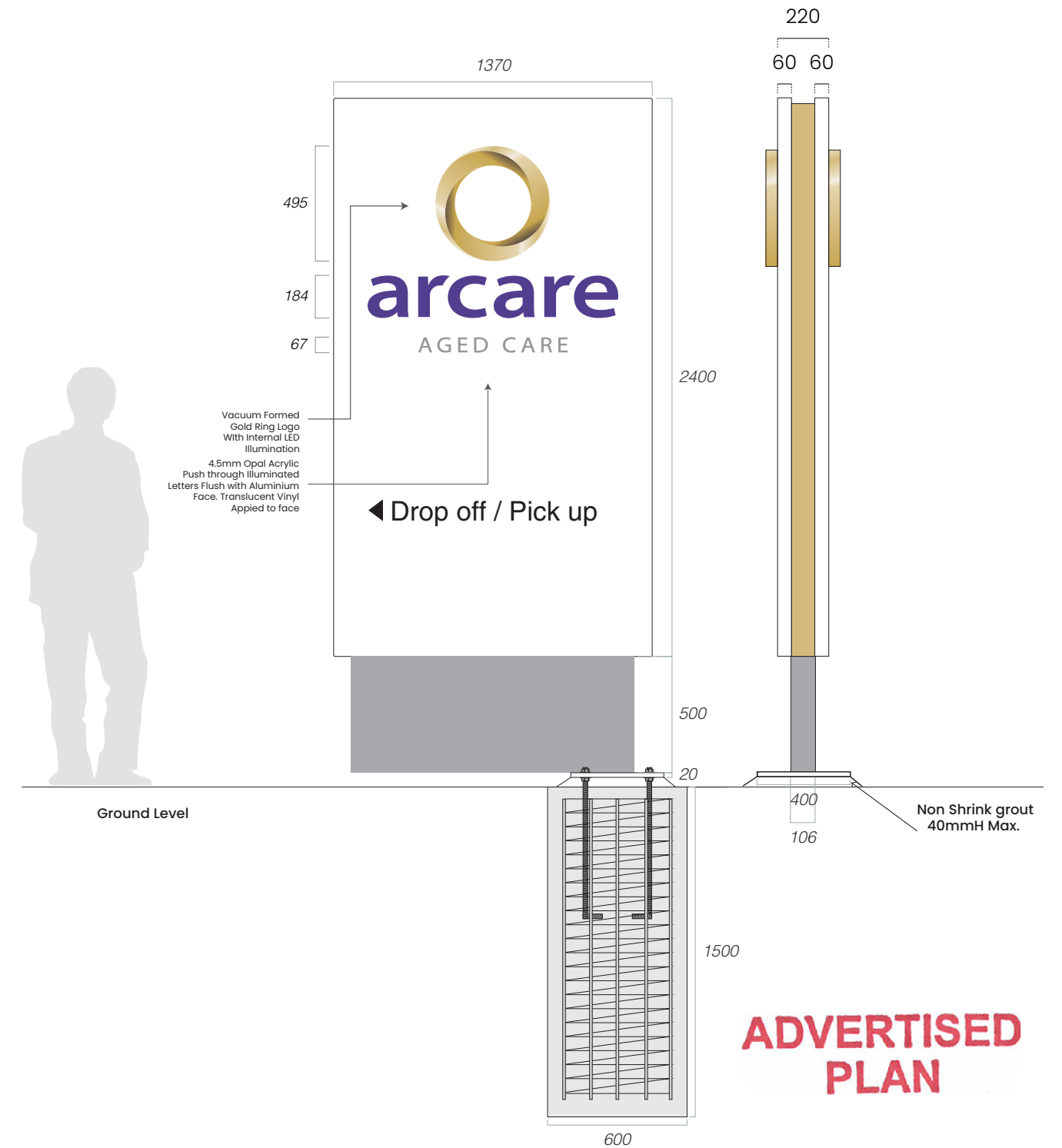


**Arcare Large Pylon w/ Wayfinding (double sided)**

**Description**

Supply & Install Qty 1 > 1370 x 2900mm overall dimension.

- 150 x 100 x 4mm steel sub frame with concrete footing and bolt cage.
- Face section 3mm aluminium panel with folded returns 1380 x 2400mm powder coated white.
- Illuminated strip around 3 sides of pylon to be 100mm wide x 3mm gold acrylic to sit 15mm in from edge.
- Base of sign to be 1220 x 600 x 100mm powder coated silver.
- All illumination by LED, includes transformer.



Scale 1:10@A3



© 2025 Briggs Signage. This document remains the property of Briggs Signage and should not be reproduced or distributed. All measurements are in millimeters unless otherwise indicated. Please verify sizes before sign production.

Client  
Knowles Group

Job Name  
Arcare Mitcham (VIC) - Ext Proposal

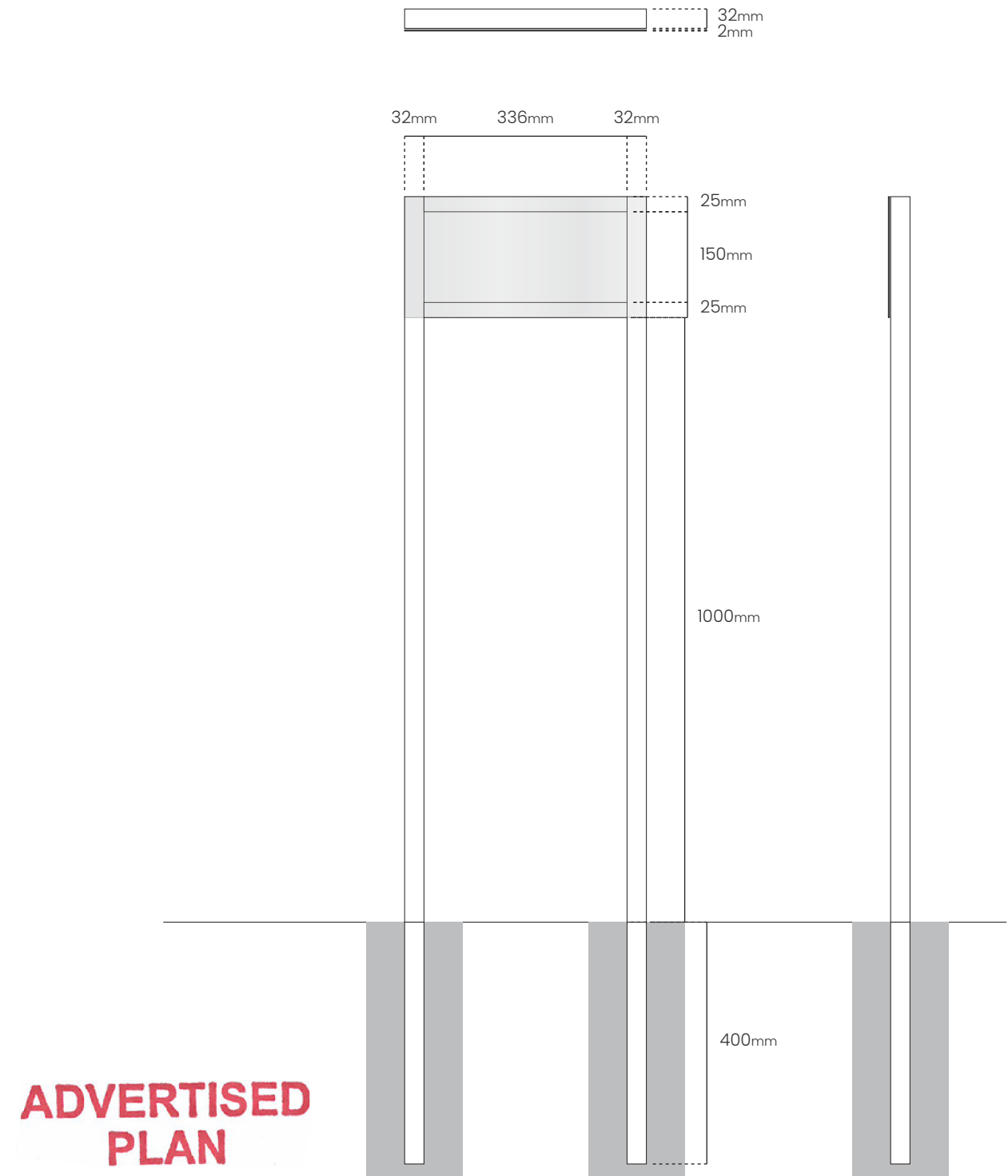
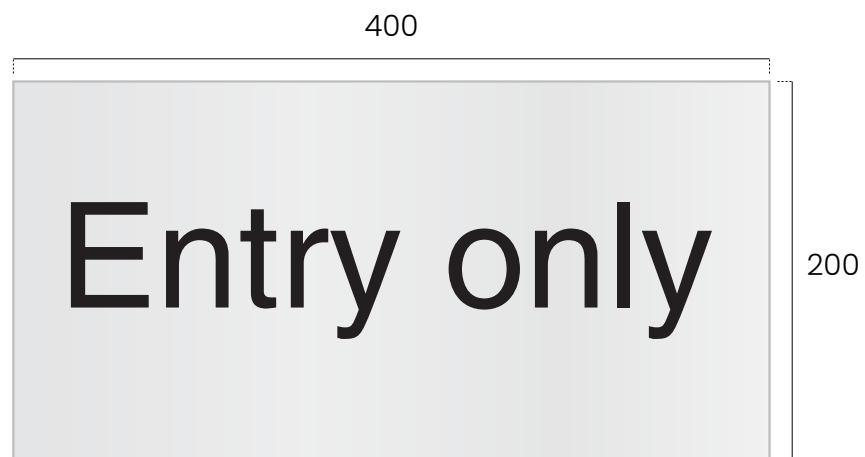
J004400\_P.4

 Exit Only and Entry Only Sign (single sided)

**Description**

Supply & Install QTY 2

- 400 x 200 x 2mm aluminium flat face with 32mm return edges.
- Fabricated aluminium frame 32x3mm SHS Upright legs and 25x3mm cross rails.
- Powder coated white with black cut vinyl text.
- Installed into ground with 400mm concrete footing



**Arcare Large Pylon w/ Wayfinding (double sided)**

**Description**

Supply & Install Qty 1 > 1370 x 2900mm overall dimension.

- 150 x 100 x 4mm steel sub frame with concrete footing and bolt cage.
- Face section 3mm aluminium panel with folded returns 1380 x 2400mm powder coated white.
- Illuminated strip around 3 sides of pylon to be 100mm wide x 3mm gold acrylic to sit 15mm in from edge.
- Base of sign to be 1220 x 600 x 100mm powder coated silver.
- All illumination by LED, includes transformer.

