

PLANTING DESIGN PLANNING DOCUMENTATION

1009 - 1013 MT ALEXANDER ROAD ESSENDON

CONTENTS

TS01	PLANTING SCHEDULE
TS02	PLANTING SCHEDULE
TS03	LANDSCAPE SPECIFICATIONS
TS04	CANOPY TREE DIAGRAM
TP01	KEY PLANS
TP02	KEY PLANS
TP03	LOBBY PLANS
TP04	GROUND FLOOR GARDENS
TP05	LEVEL 1 / TERRACE
TP06	FACADE PLANTER BOXES
TP07	LEVEL 6 / BALCONY PLANTERS
TP08	LEVEL 6 / BALCONY PLANTERS
TP09	LOBBY PLANTER DETAILS
TP10	GREEN ROOF DETAILS
TP11	RAISED PLANTER DETAILS
TP12	FACADE PLANTER DETAILS
TP13	TYPICAL PLANTING DETAILS

**ADVERTISED
PLAN**

This copied document to be made available for the sole purpose of enabling its consideration and review as part of a planning process under the Planning and Environment Act 1987. The document must not be used for any purpose which may breach any copyright

stephen@peachygreen.com.au
peachygreen.com.au
32 railway place fairfield
0415 930 885

**Peachy
Green**

PLANTING SCHEDULE

GROUND FLOOR - LOBBY, RECESSED PLANTER					
CODE	BOTANICAL NAME	COMMON NAME	INSTALL SIZE	MATURE SIZE	QTY
CANOPY TREES					
FBE	Ficus benjamina	Weeping Fig	75L	6.0m h x 4m w	3
SHRUBS, GROUNDCOVERS & CLIMBERS					
ANU	Alpinia nutans	Dwarf Cardamon Ginger	20cm	1.5m h x 75cm w	7
ABU	Asplenium bulbiferum	Mother Spleenwort	14cm	1.5m h x 1.5m w	6
BSL	Blechnum 'Silver Lady'	Silver Lady' Fern	14cm	75cm h x 75cm w	21
DRE	Dichondra repens	Kidney Weed	10cm	15cm h x 75cm w	67
DAS	Doodia aspera	Prickly Rasp Fern	14cm	45cm h x 45cm w	14
CYO	Cyathea cooperii	Australian Tree Fern	40cm	2.0m h x 2.0m w	7
HGL	Helmholtzia glaberrima	Stream Lily	20cm	1.5m h x 1.5m w	8
MDI	Microsorium diversifolium	Kangaroo Fern	20cm	30cm h x 75cm w	24
MCA	Molineria capitulata	NT Palm Grass	25cm	75cm h x 1.5m w	7
PTR	Parthenocissus tricuspidata	Boston Ivy	14cm	10m h (climbing) x 1.5m w	4
VHE	Viola hederacea	Native Violet	10cm	15cm h x 75cm w	35

GROUND FLOOR - GARDENS, DEEP SOIL GARDEN					
CODE	BOTANICAL NAME	COMMON NAME	INSTALL SIZE	MATURE SIZE	QTY
CANOPY TREES					
BPO	Betula populifolia 'Royal Frost'	Purple Birch	40cm	6m h x 4.5m w	4
EEU	Elaeocarpus eumundi	Eumundi Quandong	40cm	7m h x 4.5m w	3
SMALL TREES (not canopy cover)					
APA	Acer palmatum Dissectum 'Seiryu'	Seiryu' Japanese Maple	100L	4.0m h x 3.5m w	2
CCO	Cercis canadensis 'Oklahoma'	Eastern Redbud 'Oklahoma'	50L	4.5m h x 4.0m w	2
LNM	Laurus nobilis 'Miles Choice'	Bay Laurel	40cm	5.0m h x 3m w	5
SHRUBS, GROUNDCOVERS & CLIMBERS					
AJA	Anemone japonica 'Alba'	Japanese Windflower 'Alba'	14cm	75cm h x 45cm w	23
DAB	Digitalis 'Apricot Beauty'	Foxglove 'Apricot Beauty'	14cm	1.0m h x 40cm w	7
LEC	Liriope 'Emerald Cascade'	Lily Turf	14cm	45cm h x 75cm w	7
MSB	Miscanthus 'Sarabande'	Chinese Silver Grass	14cm	1.5m h x 75cm w	18
PTE	Pachysandra terminalis	Japanese Wood Spurge	14cm	30cm h x 35cm w	40
PTR	Parthenocissus tricuspidata	Boston Ivy	14cm	10m h (climbing) x 1.5m w	8
PTO	Pelargonium tomentosum	Peppermint-scented Geranium	14cm	75cm h x 75cm w	33
PMM	Pittosporum 'Miss Muffett'	Pittosporum 'Miss Muffett'	20cm	1.0m h x 1.5m w	8
RPE	Roldana petasitis	Velvet Groundsel	25cm	2.0m h x 2.0m w	35
SGO	Strobilanthes gossypinus	Persian Shield	25cm	1.5m h x 1.5m w	12
TSU	Thryptomene 'Supernova'	Heath Myrtle	20cm	1.5m h x 1.5m w	5
VPE	Veronica perfoliata	Digger's Speedwell	20cm	75cm h x 75cm w	12
VHE	Viola hederacea	Native Violet	10cm	15cm h x 75cm w	125

GROUND FLOOR - DRIVEWAY, RECESSED PLANTER					
CODE	BOTANICAL NAME	COMMON NAME	INSTALL SIZE	MATURE SIZE	QTY
SMALL TREES (not canopy cover)					
EBB	Eucalyptus pulverulenta 'Baby Blue'	Baby Blue' Eucalyptus	25cm	3.0m h x 3.0m w	1
SHRUBS, GROUNDCOVERS & CLIMBERS					
CCI	Casuarina glauca 'Cousin It'	Groundcover Sheoak 'Cousin It'	20cm	30cm h x 75cm w	6
CAP	Chrysocephalum apiculatum 'Yorke Peninsula'	Yellow Buttons	14cm	30cm h x 45cm w	10
DCR	Dichelachne crinita	Long-Hair Plume-Grass	14cm	50cm h x 30cm w	4
VPE	Veronica perfoliata	Digger's Speedwell	20cm	75cm h x 75cm w	4

LEVEL 1 - LOBBY GREEN ROOF					
CODE	BOTANICAL NAME	COMMON NAME	INSTALL SIZE	MATURE SIZE	QTY
AST	Arthropodium strictum	Chocolate Lily	14cm	30cm h x 45cm w	9
ASP	Asparagus densiflorus	Foxtail Fern	14cm	75cm h x 75cm w	10
CRH	Cissus rhombifolia 'Ellen Danica'	Oak-Leaf Ivy	20cm	3.0m h x 3.0m w	8
DEF	Dichondra repens 'Emerald Falls'	Emerald Falls' Kidney Weed	20cm (hanging pot)	50cm h x 1.0m (hanging length)	9
MDI	Microsorium diversifolium	Kangaroo Fern	20cm	30cm h x 75cm w	12
PST	Pelargonium striatellum	Omeo Stork's-bill	10cm	15cm h x 90cm w	4
PXA	Philodendron 'Xanadu'	Philodendron 'Xanadu'	20cm	75cm h x 75cm w	4
RBA	Rhipsalis baccifera	Mistletoe Cactus	14cm (hanging pot)	15cm h x 75cm (hanging length)	5
VPE	Veronica perfoliata	Digger's Speedwell	20cm	75cm h x 75cm w	7
VHE	Viola hederacea	Native Violet	10cm	15cm h x 75cm w	10

LEVEL 1 - COMMUNAL TERRACE, RAISED PLANTER					
CODE	BOTANICAL NAME	COMMON NAME	INSTALL SIZE	MATURE SIZE	QTY
SMALL TREES (not canopy cover)					
EBB	Eucalyptus pulverulenta 'Baby Blue'	Baby Blue' Eucalyptus	25cm	4.0m h x 3.0m w	4
SHRUBS, GROUNDCOVERS & CLIMBERS					
AGL	Acacia glaucoptera Nana	Dwarf Clay Wattle	14cm	60cm h x 1.5m w	4
ABY	Aloe 'Bush Baby Yellow'	Aloe 'Bush Baby Yellow'	14cm	30cm h x 30cm h	10
CQU	Calothamnus quadrifidus Dwarf	Dwarf One Sided Bottlebrush	14cm	1.0m h x 1.5m w	7
CCI	Casuarina glauca 'Cousin It'	Groundcover Sheoak 'Cousin It'	20cm	30cm h x 75cm w	10
CGW	Casuarina glauca 'Green Wave'	Swamp Sheoak	30cm	1.0m h x 1.0m w	10
CAP	Chrysocephalum apiculatum 'Yorke Peninsula'	Yellow Buttons	14cm	30cm h x 45cm w	14
EMY	Euphorbia myrsinites	Myrtle Spurge	14cm	30cm h x 30cm w	8
KSS	Kalanchoe hildebrandtii 'Silver Spoons'	Silver Spoons Kalanchoe	25cm	75cm h x 75cm w	8
VPA	Veronica perfoliata 'Alba'	White Digger's Speedwell	7cm tube	75cm h x 75cm w	16

This copied document to be made available for the sole purpose of enabling its consideration and review as part of a planning process under the Planning and Environment Act 1987. The document must not be used for any purpose which may breach any copyright

ADVERTISED PLAN

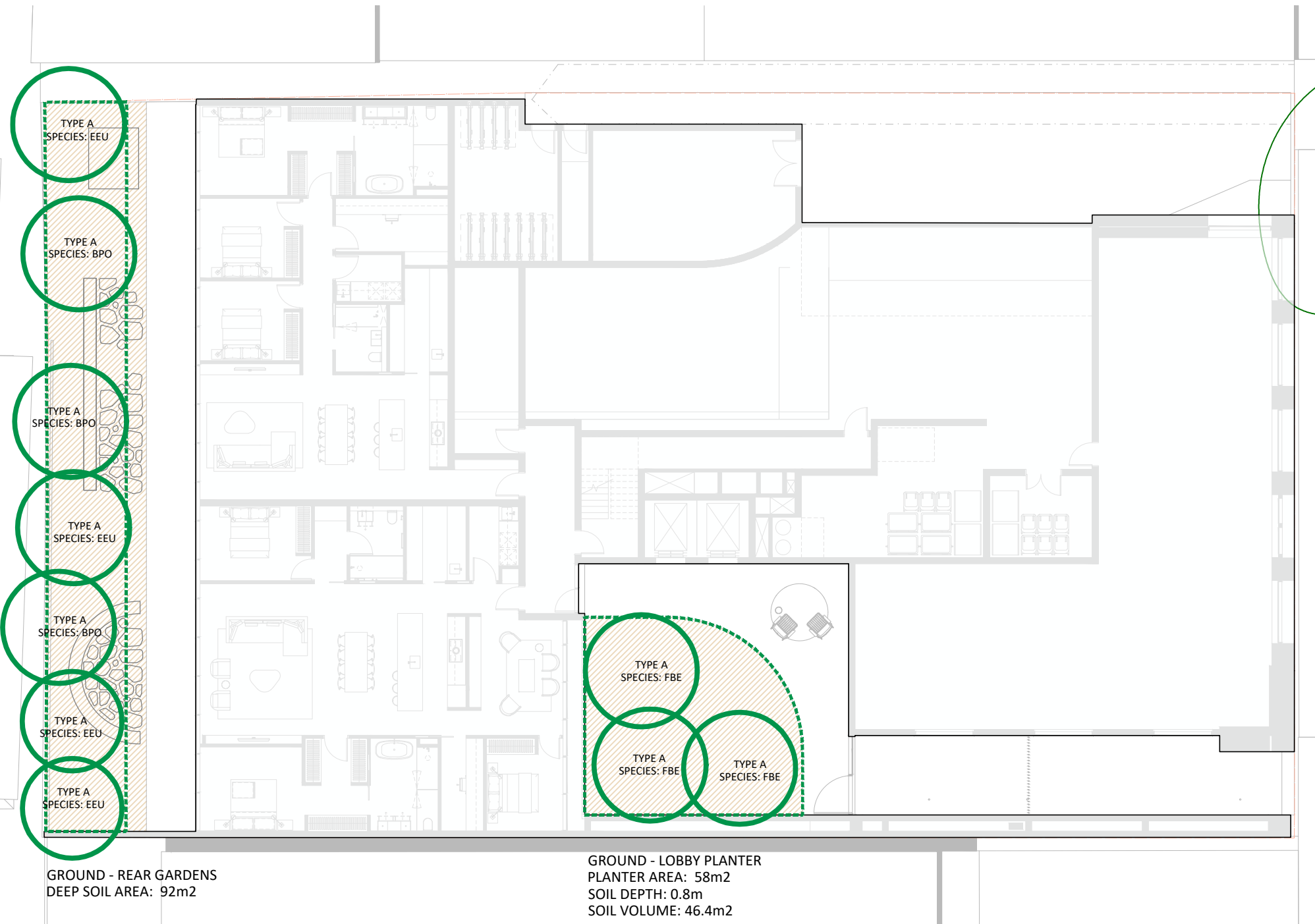
PLANTING SCHEDULE

LEVELS 2-8 FAÇADE PLANTER BOX					
CODE	BOTANICAL NAME	COMMON NAME	INSTALL SIZE	MATURE SIZE	QTY
SMALL TREES (not canopy cover)					
CPA	Cussonia paniculata	Mountain Cabbage Tree	20cm	1.5m h x 1.0m w	3
SHRUBS, GROUNDCOVERS & CLIMBERS					
ASP	Asparagus densiflorus	Foxtail Fern	14cm	75cm h x 75cm w	13
BSL	Blechnum 'Silver Lady'	Silver Lady' Fern	14cm	75cm h x 75cm w	15
CCI	Casuarina glauca 'Cousin It'	Groundcover Sheoak 'Cousin It'	20cm	30cm h x 75cm w	18
CAP	Chrysocephalum apiculatum 'Yorke Peninsula'	Yellow Buttons	14cm	30cm h x 45cm w	12
CRH	Cissus rhombifolia 'Ellen Danica'	Oak-Leaf Ivy	20cm	3.0m h x 3.0m w	23
DSF	Dichondra argentea 'Silver Falls'	Silver Falls' Kidney Weed	14cm	20cm h x 75cm (hanging length)	29
DEF	Dichondra repens 'Emerald Falls'	Emerald Falls' Kidney Weed	20cm (hanging pot)	20cm h x 1.0m (hanging length)	69
DAS	Doodia aspera	Prickly Rasp Fern	14cm	45cm h x 45cm w	14
ECA	Elettaria cardamomum	Green Cardamom	20cm	1.0m h x 80cm h	12
KDR	Kalanchoe beharensis Drake	Felt Bush	20cm	1.0m h x 1.0m w	4
MDI	Microsorium diversifolium	Kangaroo Fern	20cm	30cm h x 75cm w	15
PXA	Philodendron 'Xanadu'	Philodendron 'Xanadu'	20cm	75cm h x 75cm w	10
RBA	Rhipsalis baccifera	Mistletoe Cactus	14cm (hanging pot)	15cm h x 75cm (hanging length)	45
VPE	Veronica perfoliata	Digger's Speedwell	20cm	75cm h x 75cm w	17
VHE	Viola hederacea	Native Violet	10cm	15cm h x 75cm w	68

LEVEL 6 TERRACE PLANTERS					
CODE	BOTANICAL NAME	COMMON NAME	INSTALL SIZE	MATURE SIZE	QTY
SMALL TREES (not canopy cover)					
CAN	Cupaniopsis anacardioides	Tuckeroo	50L	4.0m h x 3.0m w	4
CPA	Cussonia paniculata	Mountain Cabbage Tree	50cm	1.50m h x 1.5m w	2
SHRUBS, GROUNDCOVERS					
LLF	Leptospermum 'Foreshore'	Coastal Tea Tree 'Foreshore'	25cm	45cm h x 75cm w	11
AFP	Aloe hybrida 'Fairy Pink'	Fairy Pink' Aloe	14cm	30cm h x 30cm w	39
CCI	Casuarina 'Cousin It'	Groundcover Sheoak 'Cousin It'	20cm	30cm h x 75cm w	34
EMY	Euphorbia myrsinites	Myrtle Spurge	14cm	30cm h x 30cm w	65
KCS	Kalanchoe orgyalis 'Copper Spoons'	Copper Spoons	20cm	1.0m h x 1.0m w	8
PST	Pelargonium striatellum	Omeo Stork's-bill	10cm	15cm h x 90cm w	9
PDE	Pinus densiflora 'Osmaston Compact'	Dwarf Japanese Red Pine 'Osmaston Compact'	20cm	1.0m h x 1.0m w	4
SGB	Sedum spurium 'Green Blob'	Green Blob	14cm	15cm h x 45cm w	27
SGR	Stylidium graminifolium	Grass Trigger Plant	14cm	45cm h x 45cm w	13

**ADVERTISED
PLAN**

This copied document to be made available for the sole purpose of enabling its consideration and review as part of a planning process under the Planning and Environment Act 1987. The document must not be used for any purpose which may breach any copyright



Clause 58.03-5 - Canopy Trees

Site area			1490	m ²
Deep soil			refer to architectural drawings for garden area / deep soil/ pervious surfaces)	
Required canopy cover (50m ² + 20%)	50	98	148	m ²
Canopy Tree area provided			149.0	m ²

Ground Floor - Rear Gardens - Deep Soil

Deep Soil area	92	m ²
Soil prepared depth	1	m
Soil area required for Canopy Trees	65.25	m ²
Area requirement met	yes	

Canopy Tree	type	mature width	mature height	canopy area per tree (m ²)	qty	total canopy area (m ²)	min deep soil area per tree (m ²)	total deep soil required (m ²)
EEU - Elaeocarpus eumundii	A	4.5	7	15.9	4	63.6	12	48
BPO - Betula populifolia 'Royal Frost'	A	4.5	6	15.9	3	47.7	13	39

87	tree cluster volume reduction (6 trees or 25%)
25%	
65.25	
Tree cluster canopy area 111.3	

Ground Floor - Lobby Courtyard - Planter

Planter area	58	m ²
Soil depth	0.8	m
Soil volume	46.4	m ³
Volume required for Canopy Trees	19.2	m ³
Volume requirement met	yes	

	type	mature width	mature height	canopy area per tree (m ²)	qty	total canopy area (m ²)	min soil volume (m ³)	total soil volume required (m ³)
FBE - Ficus benjamina	A	4	6	12.6	3	37.7	7.54	22.62

22.62	tree cluster volume reduction (3 trees or 15%)
15%	
19.227	
Tree cluster canopy area 37.7	

ADVERTISED PLAN

This copied document to be made available for the sole purpose of enabling its consideration and review as part of a planning process under the Planning and Environment Act 1987. The document must not be used for any purpose which may breach any copyright

PLANTING MATERIALS AND ELEMENTS SCHEDULE

CODE	ELEMENT / ITEM	DESCRIPTION	DETAILS	SUPPLIER
	HARD PAVEMENTS	Refer to Architecture Drawings for selections		
	FENCING AND WALLS	Refer to Architecture Drawings for selections		
	EXTERNAL GARDEN LIGHTING	Refer to Architecture Drawings for selections and locations		
	GARDEN BEDS (GROUND LEVEL - DEEP SOIL)	Mulch: Fultons Mulch Master Top Soil: Fultons 3 way soil Subsoil: Sandy Loam 200mm depth ripping + soil cultivation Osmocote Native - Slow Release Fertiliser - broadcast 60g / m2	70mm depth mulch 300mm depth topsoil 700mm depth subsoil	Fultons Garden Supplies or equal approved
	PLANTERS ON STRUCTURE	Mulch: 20mm gravel screenings - Bright Pebbles Growing Media: Rooflite Extensive Mix (supplied by Fultons) Geotextile: Bidim A14-A24 supplied by Geofabrics Australasia Drainage cell: 30mm thick atlantis flow cell Slip sheet: 200-300 micron LDPE sheet protection layer Waterproofing protection board: Drainage cell or Coreflute to all vertical sides of planter Waterproofing: by builder / refer architect documentation Planter flashing: flashings by builder Fertiliser: ICL Flora 14:3:8 + Mg + Cu 8-9 mth release - To be top dressed after planting at 80 g/m2.	50mm depth mulch 400-900mm depth growing media (varies refer to plans)	Fultons Garden Supplies or equal approved
	GREEN ROOF (LVL 01 LOBBY)	Mulch: no mulch Growing Media: Rooflite Extensive Mix (supplied by Fultons) Geotextile: Bidim A14-A24 supplied by Geofabrics Australasia Drainage cell: 20mm thick atlantis flow cell Slip sheet: 200-300 micron LDPE sheet protection layer Waterproofing protection board: Drainage cell or Coreflute to all vertical sides of planter Waterproofing: by builder / refer architect documentation Planter flashing: flashings by builder	min 200mm depth growing media	Fultons Garden Supplies or equal approved
	IRRIGATION	Design and Construct: Provide a complete, automatic Irrigation System, complete with connections to water, drainage, electrical supply, manifolds and pumps, pipework, valves and filters, drippers and outlets and control systems. Specialist contractor requirement: The irrigation designer must have experience and expertise in design systems for green roof, podium and terrace planters. Suitable Irrigation Designers include: Eco Water Irrigation, Geoff Connellan, Make It Wet, HydroPlan, ten Buuren Irrigation Scope: Provide irrigation to all planting areas including: Ground - driveway planter, lobby, rear gardens Lvl 01 - green roof, communal terrace Lvl 02 to 08 - void facade planters Lvl 06 + 07 - terrace planters Metering: meter irrigation water consumption to the two ground floor garden apartments separately to the other body corporate areas. Delivery type - for planters: Drip irrigation - 8mm dia 2L/H integrated emitter at 150mm c/c drip line row spacing 300mm c/c - to be located on top of soil level and below the mulch layer Notes: Provide backflow prevention to each supply point, as well as air release and flushing valves to each station Controller: provide 1 controller per level. Controller to be automated seasonally adjusted controller - with each planter type, and each terrace to be controlled individually. Power supply: all power to be provide hardwired (no battery powered fittings) Water supply: Mains Supply Sensor Soil: moisture sensor - 1 per terrace - with automated shut off override connection to irrigation controller Hold Points: _Details of irrigation designer and relevant design experience _Coordination meeting with architect, client, building services designer _Submission of draft irrigation design, including design layout drawings, as well as list of all component _Field testing of entire irrigation system on completion of installation prior to covering Submissions: _Warranty _User manual _As built documentation _Product Data and Irrigation Design Documents		
	TREE ANCHORING SYSTEM	Provide tree rootball anchors to the trees in Lvl 06 + 07 planters. Fytogreen Root Ball Kit - 3 Leg Dead Man System (Product Code FRF1DMM) to all trees. Install to Manufacturer's Specification.		

ADVERTISED PLAN

This supplied document to be made available for the sole purpose of enabling its consideration and review as part of a planning process under the Planning and Environment Act 1987. The document must not be used for any purpose which may breach any copyright

LANDSCAPE MANAGEMENT PLAN - GREEN LIFE

PLANTING ESTABLISHMENT MAINTENANCE	<p>Provide 12 months' Plant Establishment Maintenance to all green life installed. Specialist Trade requirement: Maintenance Contractor to have expertise in façade planter & green roof maintenance. Establishment Maintenance Period is to commence at the date of Practical Completion. Maintain a Maintenance Log Book that records:</p> <ul style="list-style-type: none"> -date & time of each visit to site -maintenance tasks undertaken & in which areas -submit log entries via email bi-monthly, & a consolidated log at completion of the period. <p>Maintenance Frequency:</p> <ul style="list-style-type: none"> -min. monthly for the first 3 months -min. bi-monthly visits thereafter <p>Maintenance Tasks:</p> <ul style="list-style-type: none"> -inspect all facade & green roof planters -remove & replace any failed plants with same species (bi-monthly) -manually remove all weeds -provide light fertilisation if required following plant inspection -inspect & manage irrigation system (refer to irrigation designer's documentation) -removal of any rubbish, & leaf litter from garden bed areas -top up or level out mulch if required to maintain mulch depths specified -maintain drainage to planters - inspect to ensure planters drain freely <p>Obtain approval prior to:</p> <ul style="list-style-type: none"> -installing any alternative plant species -undertaking any formative pruning to tree, shrub or climbing plants -undertaking any works where any additional costs are required
---	--

SPECIFICATION NOTES

<p>PERMITS + APPROVALS All Contractors (and their work) must comply strictly to all Australian Standards, Building Codes, Environmental Protection policies, Workplace Health and Safety guidelines, Local Council/Governance regulations and Heritage Council requirements.</p> <p>SITE SET-OUT AND PREPARATION Contractor to undertake a full site set-out and verify all dimensions prior to undertaking any works report any anomalies to be reported immediately to the superintendent</p> <p>UNDERGROUND SERVICES Verify location and depth of all underground services prior to excavation, and protect during construction work.</p> <p>EXCAVATION Builder to establish site. All rubble, aggregate and poor-quality soils to be removed from site in preparation for landscape contractor to commence works. New deep soil garden beds to be excavated down to a minimum depth of 1m below the new finished level to allow for Imported soil substrates and mulch to finish.</p> <p>STEPPING STONES Steppers to be adhered to a wet concrete base on 100mm depth compacted crushed rock. Laid as per Landscape Plan, with quantities and measurements verified on site. Peachy Green to approve stepper layout prior to fixing down. Nominal 150mm gap between steppers. Gaps between paving to be free of rubble or concrete and filled with the specified soil to allow planting.</p> <p>PAVING, LIGHTING, DRAINAGE Refer to Architects and Civil Designers documentation</p> <p>SUB SURFACE DRAINAGE - garden beds Ensure all garden beds are free draining and drain away from building. Agricultural drains Installed below all garden beds and lawn surfaces, to be connected to the property stormwater drainage system and Legal point of Discharge. Agricultural drains to be 90mm slotted PVC pipe with a sock filter throughout with screenings or scoria to be backfilled over all agriculture drains. Geotextile fabric to cover the screenings.</p> <p>PLANT SUPPLY Plants to be supplied by Peachy Green unless otherwise specified.</p>	<p>It is the responsibility of the Contractor to inspect all plants delivered to site. Any faults or concerns should be immediately reported to Peachy Green prior to off-loading the plants from the delivery truck.</p> <p>Plant Supply - if supplied by Contractor. All advanced stock to be approved prior to delivery by Peachy Green. Plants to be ordered as per current plant schedule. Any substitutions are to be approved by Peachy Green</p> <p>Once the plants are delivered, it is the Contractor's responsibility to water and maintain their health. Any plants that die due to lack of water or neglect are to be replaced by the contractor at their expense. Irrigation system is to be fully operational prior to planting. Stock is held on site it must be hand watered daily until time of planting.</p> <p>PLANT PLACING Plants are to be laid out and placement confirmed onsite with Peachy Green prior to planting.</p> <p>PLANTING All trees, canopy trees and advanced trees must be planted by a Qualified Landscape Gardener, Horticulturist or similar approved tradesman. Prior to planting beds to be cultivated and be free from compaction. Loosely break up soil. Dig a hole twice the width and one and equal to depth of the pot size. Water plants in pots thoroughly for before planting. Place the plant in the hole & backfill with fresh topsoil ensuring the top of the rootball is at the same level as the finished soil level. Fertilize all plants following planting with slow release fertilizer to manufactures guidelines. Hand water in with 'Seasol' or similar the same day as planting.</p> <p>MULCH Mulch levels to be set flush with finished surfaces and all garden beds to be left flat and even throughout. Slight wells to be created around base of tree trunks. Mulch to be well watered in on completion.</p> <p>HARDWOOD STAKES INSTALLED TO TREES (deep soil areas only) Provide flexible ties such as hessian webbing fixed securely to the stakes, one tie at half the height of the main stem, others as necessary to stabilize the plant. Attach ties loosely so as not to restrict plant growth. Stakes to be painted Black.</p>
--	--



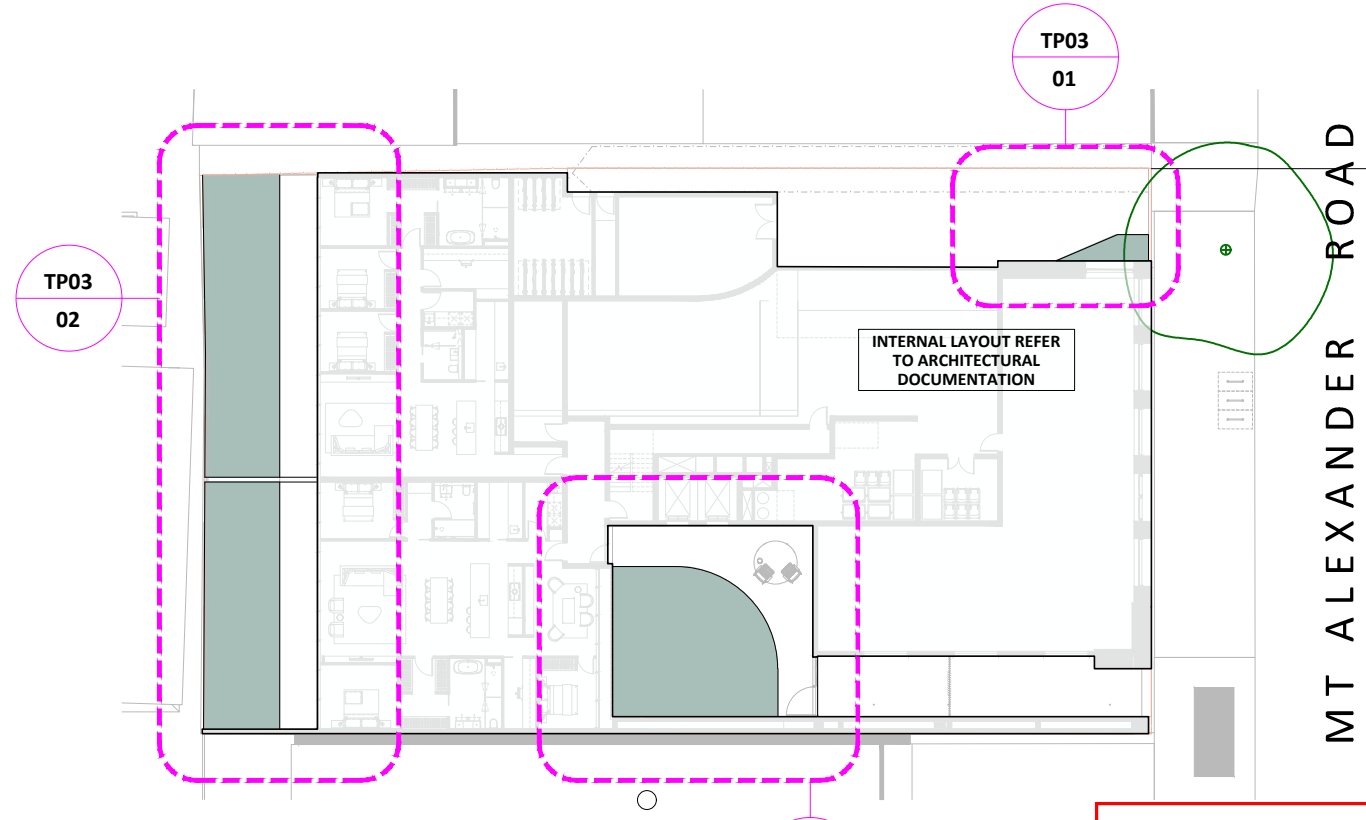
LANDSCAPE ARCHITECTS
0415 930 885
STAN@PEACHYGREEN.COM.AU

CONDITIONS \ NO DRAWINGS ARE TO BE REPRODUCED WITHOUT THE CONSENT OF THE LANDSCAPE DESIGNER. CONSTRUCTION DETAILS ARE 'TYPICAL' ONLY AND ARE NOT INTENDED AS, OR TO BE SUBSTITUTE FOR RELEVANT ENGINEERING COMPUTATIONS. CONTRACTOR/BUILDER/TRADESMAN TO CONFIRM ALL MEASUREMENTS ON SITE PRIOR TO CONSTRUCTION, AND VERIFY THE LOCATION AND DEPTH OF ALL SERVICES BEFORE COMMENCEMENT OF WORKS ON SITE. ALL RELEVANT BUILDING/PLANNING PERMITS, WORK COVER, PUBLIC LIABILITY AND OTHER DOCUMENTATION IS TO BE IN PLACE PRIOR TO COMMENCING WORKS.

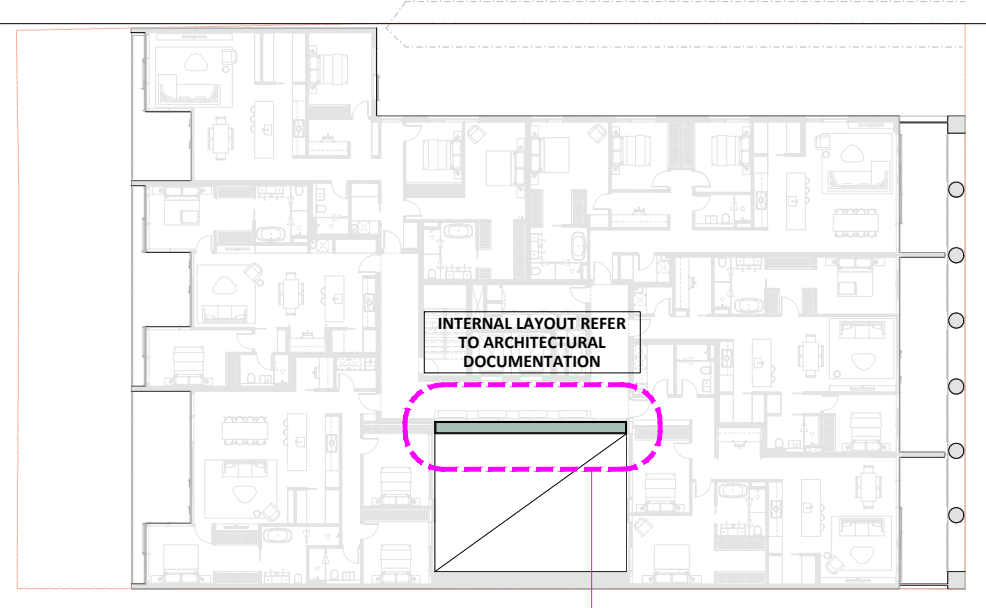
DRAWING	TS03	SCALE	NTS
DATE	DEC 2025	STAGE	PLANNING
REV	A	STATUS	FOR REVIEW

LANDSCAPE SPECIFICATIONS
1009-1013 MOUNT ALEXANDER ROAD ESSENDON

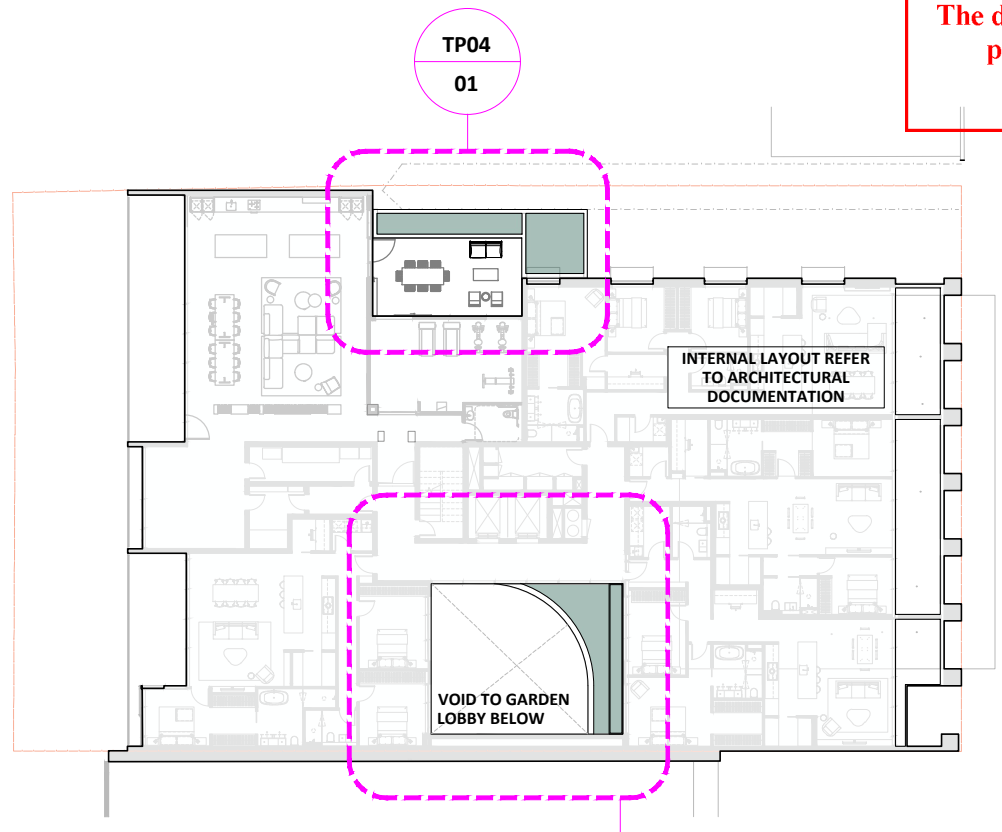
ADVERTISED PLAN



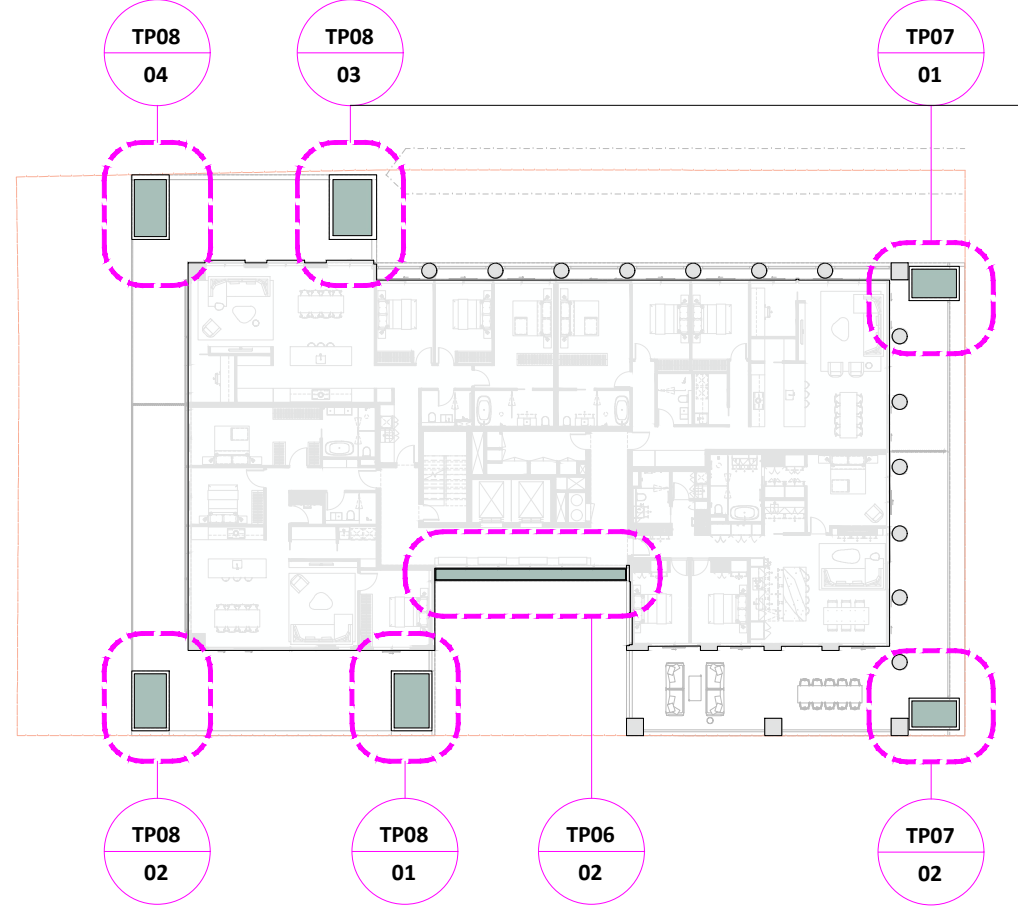
01 GROUND FLOOR KEY PLAN
1:400 @ A3



03 LEVELS 2-5 KEY PLAN
1:400 @ A3



02 LEVEL 1 KEY PLAN
1:400 @ A3



04 LEVEL 6 KEY PLAN
1:400 @ A3

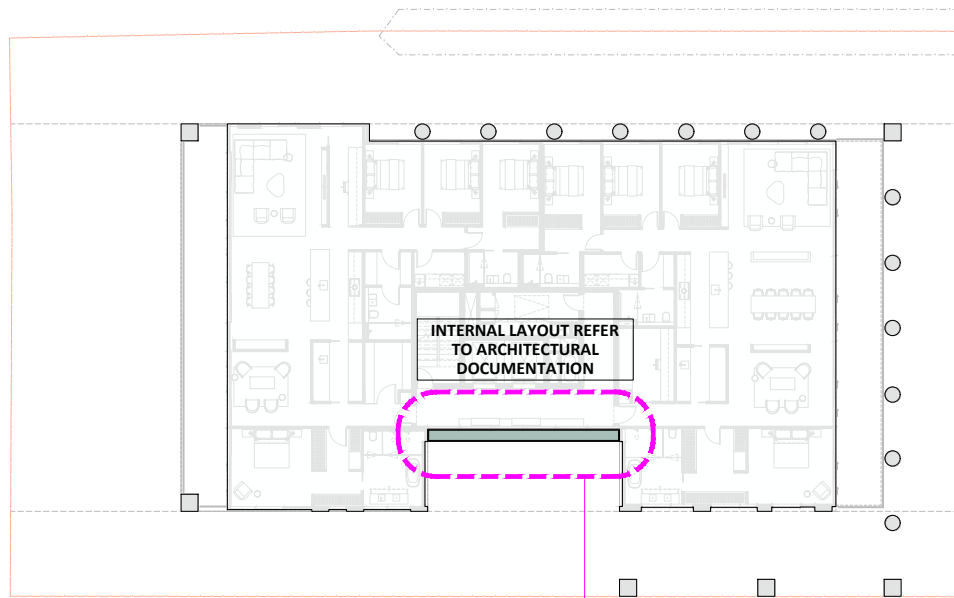
This copied document to be made available for the sole purpose of enabling its consideration and review as part of a planning process under the Planning and Environment Act 1987. The document must not be used for any purpose which may breach any copyright

MT ALEXANDER ROAD

MT ALEXANDER ROAD

MT ALEXANDER ROAD

MT ALEXANDER ROAD



MT ALEXANDER ROAD

01 LEVEL 7 KEY PLAN KEY PLAN
1:400 @ A3

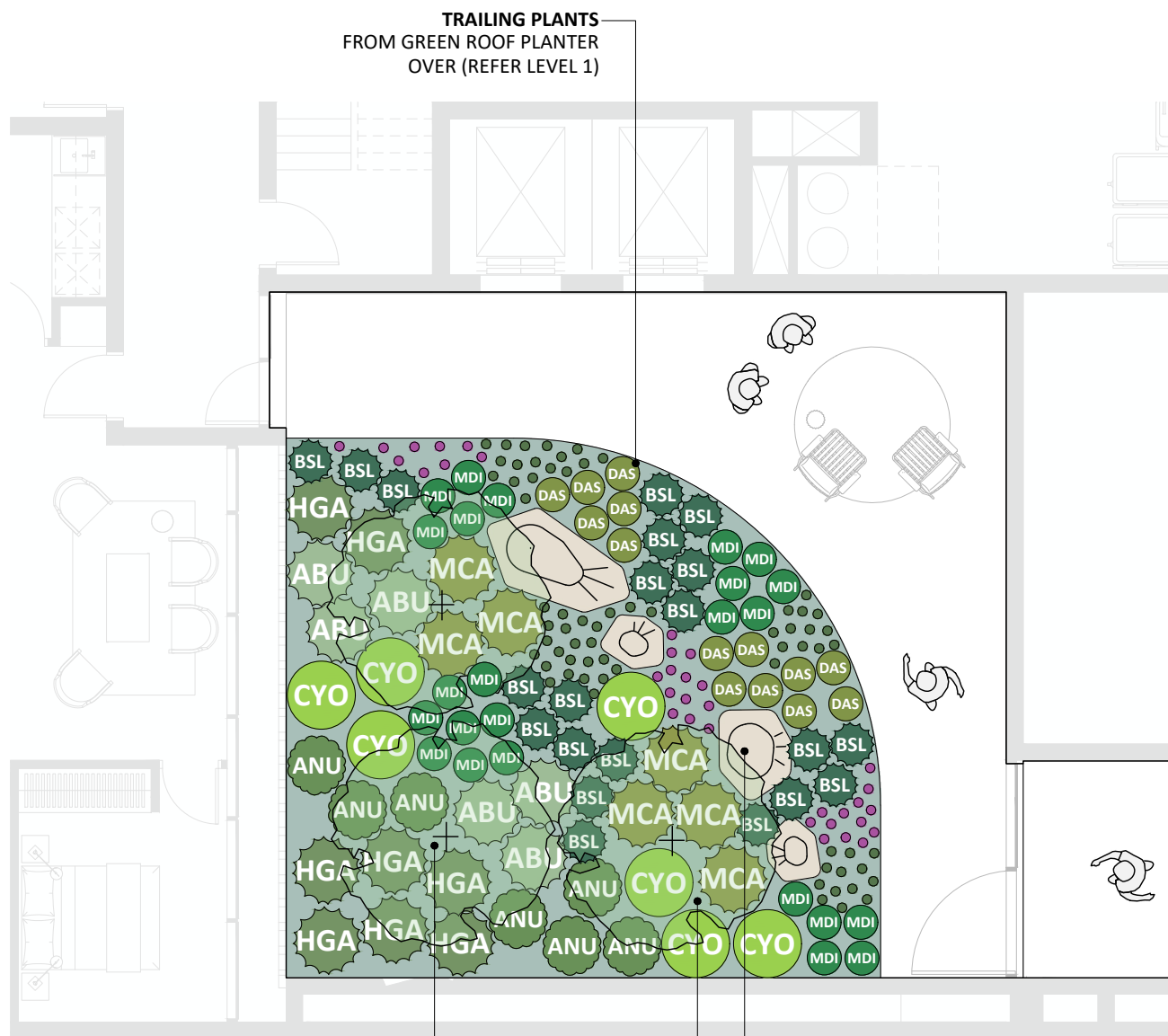
TP06
02

This copied document to be made available for the sole purpose of enabling its consideration and review as part of a planning process under the Planning and Environment Act 1987. The document must not be used for any purpose which may breach any copyright

ADVERTISED PLAN

ADVERTISED PLAN

This copied document to be made available for the sole purpose of enabling its consideration and review as part of a planning process under the Planning and Environment Act 1987. The document must not be used for any purpose which may breach any copyright



TRAILING PLANTS FROM GREEN ROOF PLANTER OVER (REFER LEVEL 1)

ADVANCED SPECIMEN TREES
FBE X 3

NATURAL BOULDER CLUSTERS

TYPE: RECESSED PLANTER
AREA: 58m²
SOIL DEPTH: typ 800mm
VOLUME: 46.4m³

01 LOBBY - GROUND FLOOR PLAN

1:100 @ A3

GROUND FLOOR LOBBY PLANTING
REFER TYPICAL PLANTER SECTIONS & ARCHITECTURAL SECTIONS FOR PROFILES

PLANTING: FOCUS ON NATIVE & INDIGENOUS SPECIES



TRAILING PLANTS CASCADING TO LOBBY AREA BELOW

EXTENSIVE GREEN ROOF LOW PLANTING

VOID TO GARDEN LOBBY BELOW

RAISED PLANTER ALONG APARTMENT INTERFACE PROVIDING ADDITIONAL PRIVACY TO INTERNAL SPACES

TYPE: RAISED PLANTER
AREA: 4.95m²
SOIL DEPTH: MIN 700mm
VOLUME: 3.47m³

TYPE: EXTENSIVE GREEN ROOF
AREA: 12.09m²
SOIL DEPTH: MIN 200 mm
VOLUME: 2.42m³

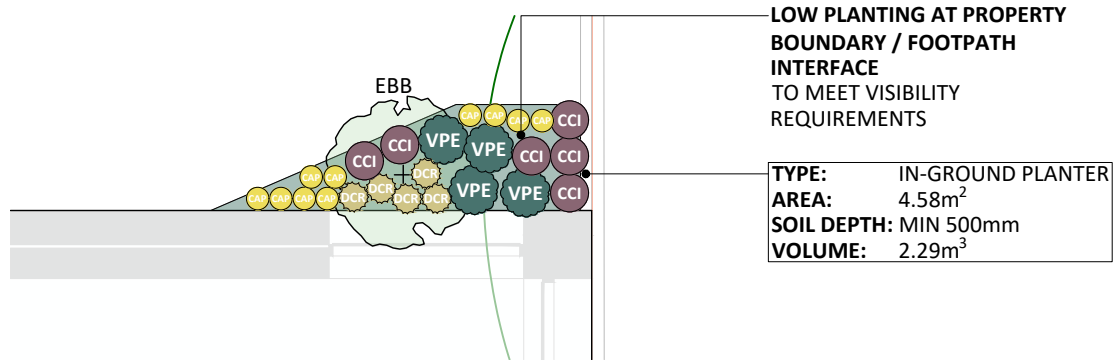
02 LOBBY ROOF PLANTER - LEVEL 1 PLAN

1:100 @ A3

LEVEL 1 LOBBY PLANTING
REFER TYPICAL PLANTER SECTIONS & ARCHITECTURAL SECTIONS FOR PROFILES

PLANTING: NATIVE & EXOTIC SPECIES MIX



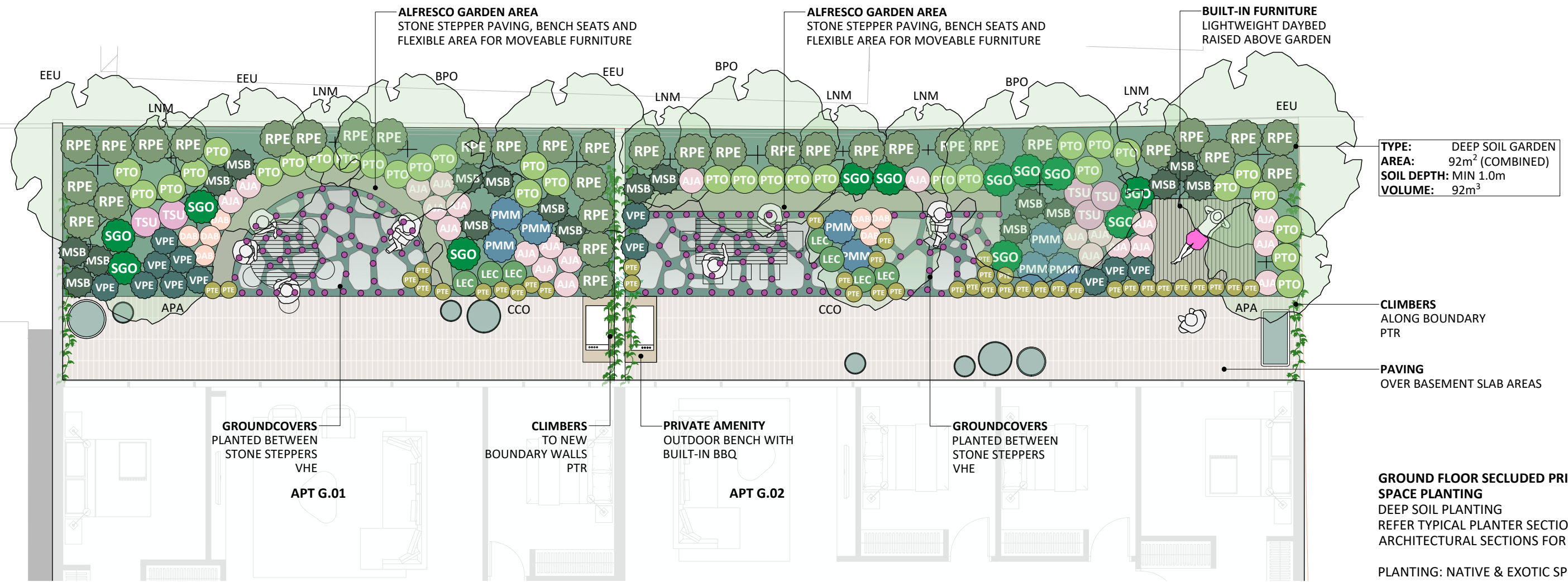


ADVERTISED PLAN

This copied document to be made available for the sole purpose of enabling its consideration and review as part of a planning process under the Planning and Environment Act 1987. The document must not be used for any purpose which may breach any copyright

01 DRIVEWAY PLANTER - GROUND FLOOR PLAN
1:100 @ A3

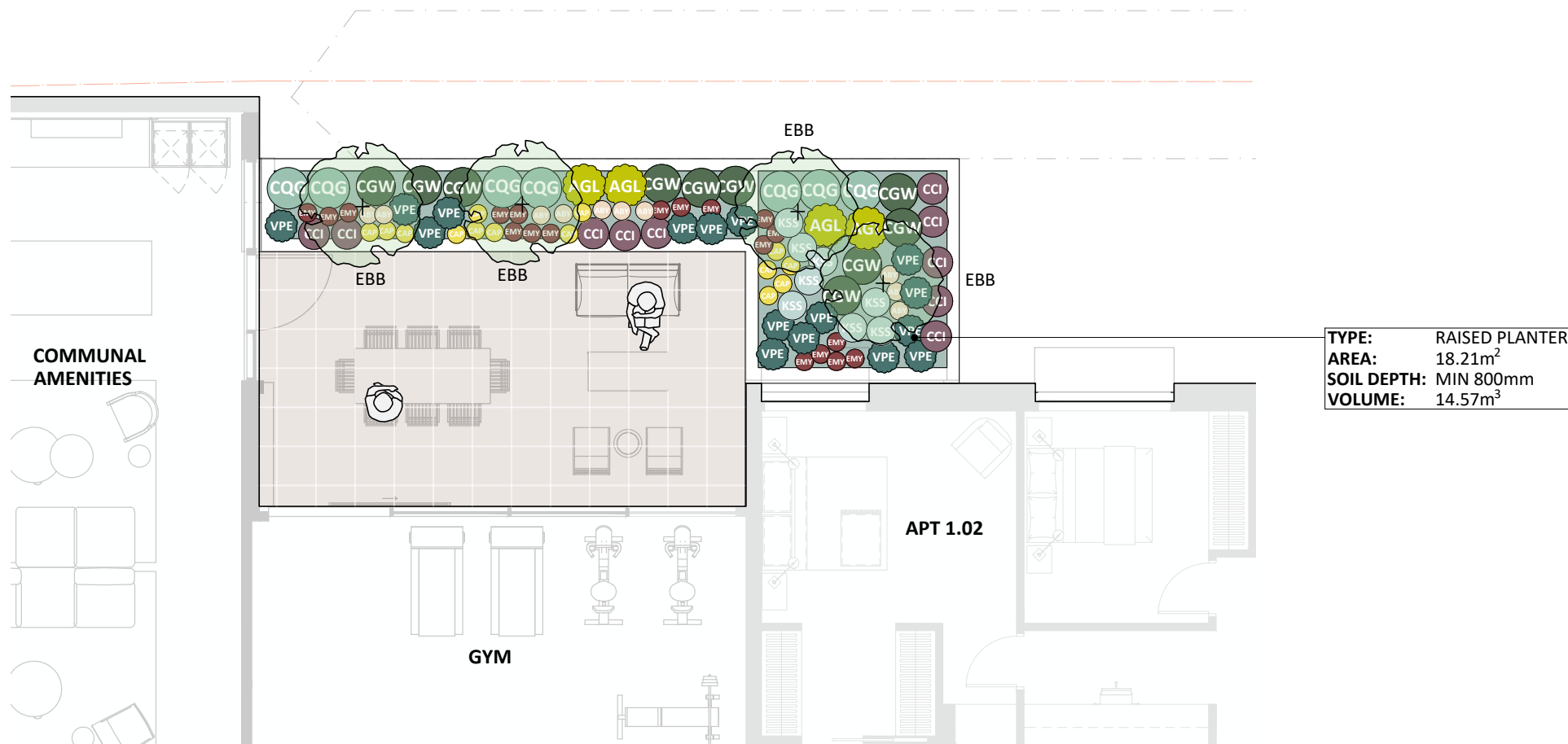
GROUND FLOOR DRIVEWAY PLANTING
REFER TYPICAL PLANTER SECTIONS & ARCHITECTURAL SECTIONS FOR SOIL DEPTH PROFILES



02 SPOS - GROUND FLOOR PLAN
1:100 @ A3

N.B. DRAWING HAS BEEN ROTATED

ADVERTISED PLAN



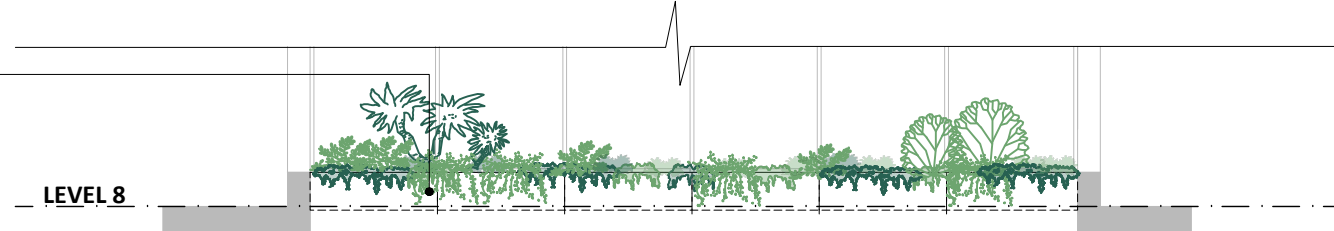
This copied document to be made available for the sole purpose of enabling its consideration and review as part of a planning process under the Planning and Environment Act 1987. The document must not be used for any purpose which may breach any copyright

01 COMMUNAL AMENITIES & TERRACE AREA
1:100 @ A3

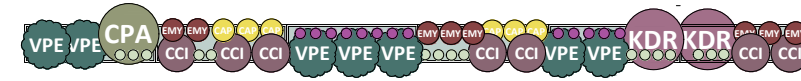
LEVEL 1 TERRACE PLANTING
REFER TYPICAL PLANTER SECTIONS & ARCHITECTURAL SECTIONS FOR PROFILES

PLANTING: FOCUS ON NATIVE & INDIGENOUS SPECIES WITH SOME EXOTIC SUCCULENT SPECIES

TYPE: PLANTER BOX
 AREA: 5.05m² (6 BOXES)
 SOIL DEPTH: MIN 500mm
 VOLUME: 2.52m³

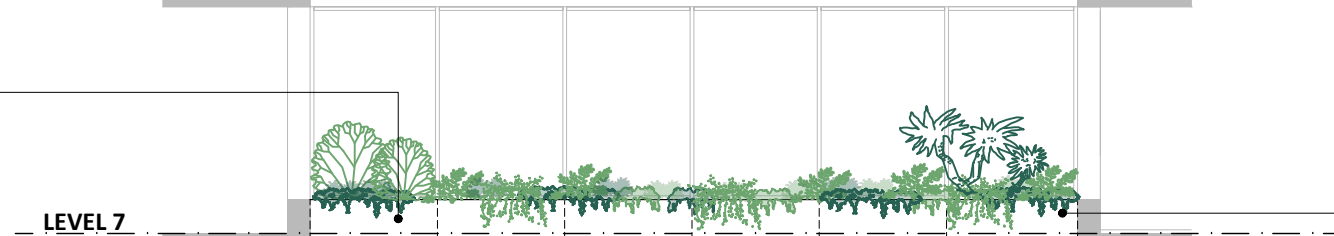


LEVEL 8

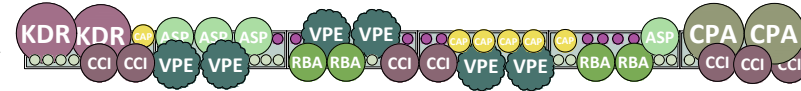


LEVEL 8
PLANTER BOX PLAN

TYPE: PLANTER BOX
 AREA: 5.05m² (6 BOXES)
 SOIL DEPTH: MIN 500mm
 VOLUME: 2.52m³

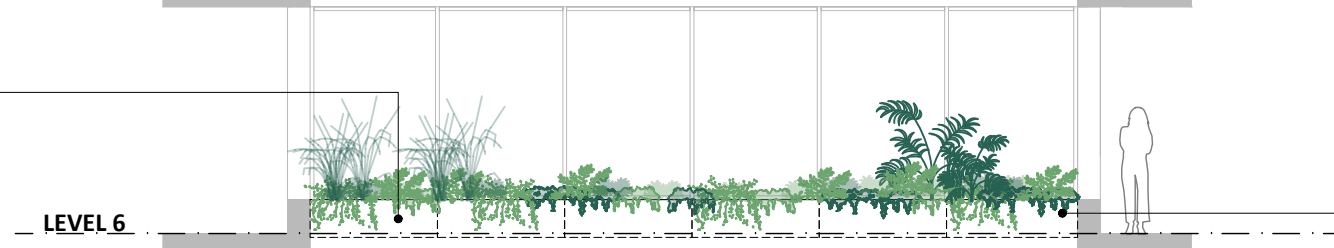


LEVEL 7

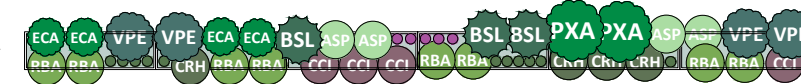


LEVEL 7
PLANTER BOX PLAN

TYPE: PLANTER BOX
 AREA: 5.05m² (6 BOXES)
 SOIL DEPTH: MIN 500mm
 VOLUME: 2.52m³



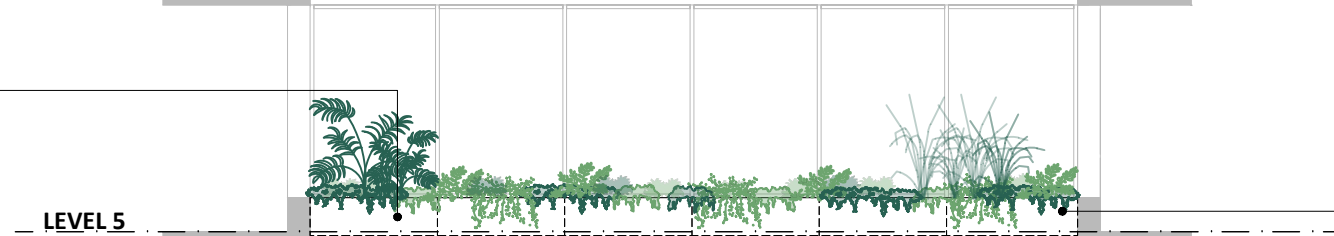
LEVEL 6



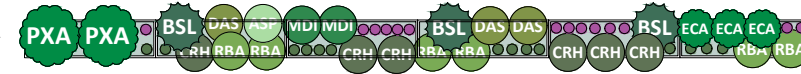
LEVEL 6
PLANTER BOX PLAN

ADVERTISED
PLAN

TYPE: PLANTER BOX
 AREA: 5.05m² (6 BOXES)
 SOIL DEPTH: MIN 500mm
 VOLUME: 2.52m³

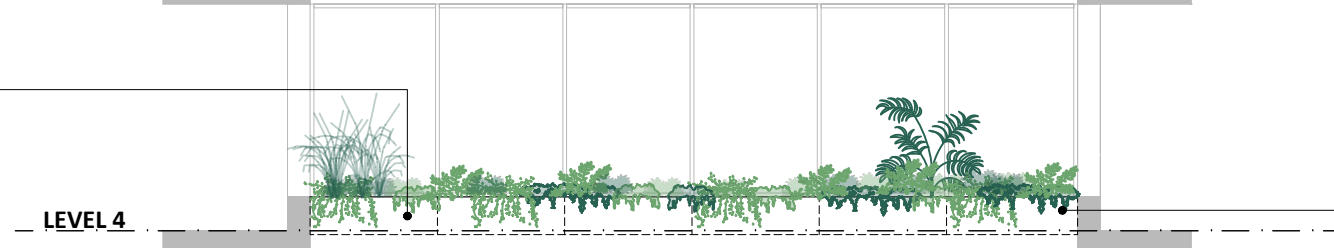


LEVEL 5



LEVEL 5
PLANTER BOX PLAN

TYPE: PLANTER BOX
 AREA: 5.05m² (6 BOXES)
 SOIL DEPTH: MIN 500mm
 VOLUME: 2.52m³

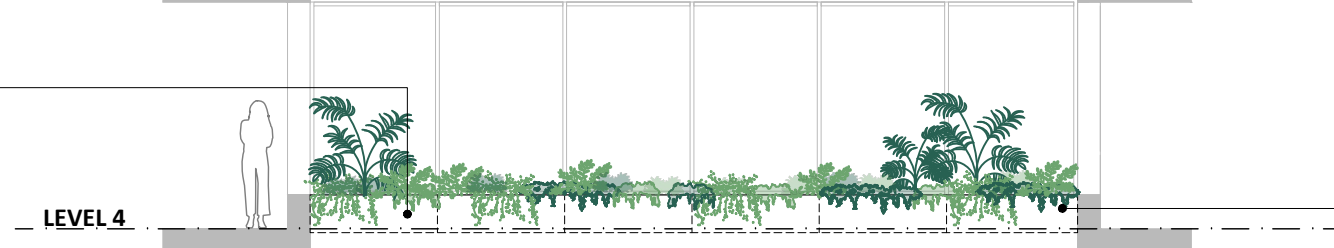


LEVEL 4



LEVEL 4
PLANTER BOX PLAN

TYPE: PLANTER BOX
 AREA: 5.05m² (6 BOXES)
 SOIL DEPTH: MIN 500mm
 VOLUME: 2.52m³

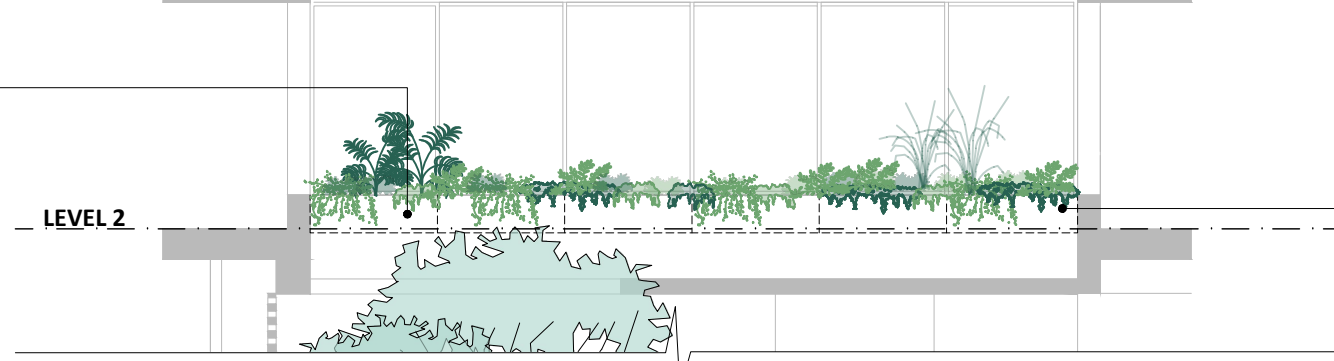


LEVEL 3



LEVEL 3
PLANTER BOX PLAN

TYPE: PLANTER BOX
 AREA: 5.05m² (6 BOXES)
 SOIL DEPTH: MIN 500mm
 VOLUME: 2.52m³



LEVEL 2



LEVEL 2
PLANTER BOX PLAN

01 LOBBY FACADE ELEVATION
1:100 @ A3

02 LOBBY FACADE PLANTERBOX PLANS
1:100 @ A3

This copied document to be made available for the sole purpose of enabling its consideration and review as part of a planning process under the Planning and Environment Act 1987. The document must not be used for any purpose which may breach any copyright



LANDSCAPE ARCHITECTS
 0415 930 885
 STAN@PEACHYGREEN.COM.AU

CONDITIONS \ NO DRAWINGS ARE TO BE REPRODUCED WITHOUT THE CONSENT OF THE LANDSCAPE DESIGNER. CONSTRUCTION DETAILS ARE 'TYPICAL' ONLY AND ARE NOT INTENDED AS, OR TO BE SUBSTITUTE FOR RELEVANT ENGINEERING COMPUTATIONS. CONTRACTOR/BUILDER/TRADESMAN TO CONFIRM ALL MEASUREMENTS ON SITE PRIOR TO CONSTRUCTION, AND VERIFY THE LOCATION AND DEPTH OF ALL SERVICES BEFORE COMMENCEMENT OF WORKS ON SITE. ALL RELEVANT BUILDING/PLANNING PERMITS, WORK COVER, PUBLIC LIABILITY AND OTHER DOCUMENTATION IS TO BE IN PLACE PRIOR TO COMMENCING WORKS.



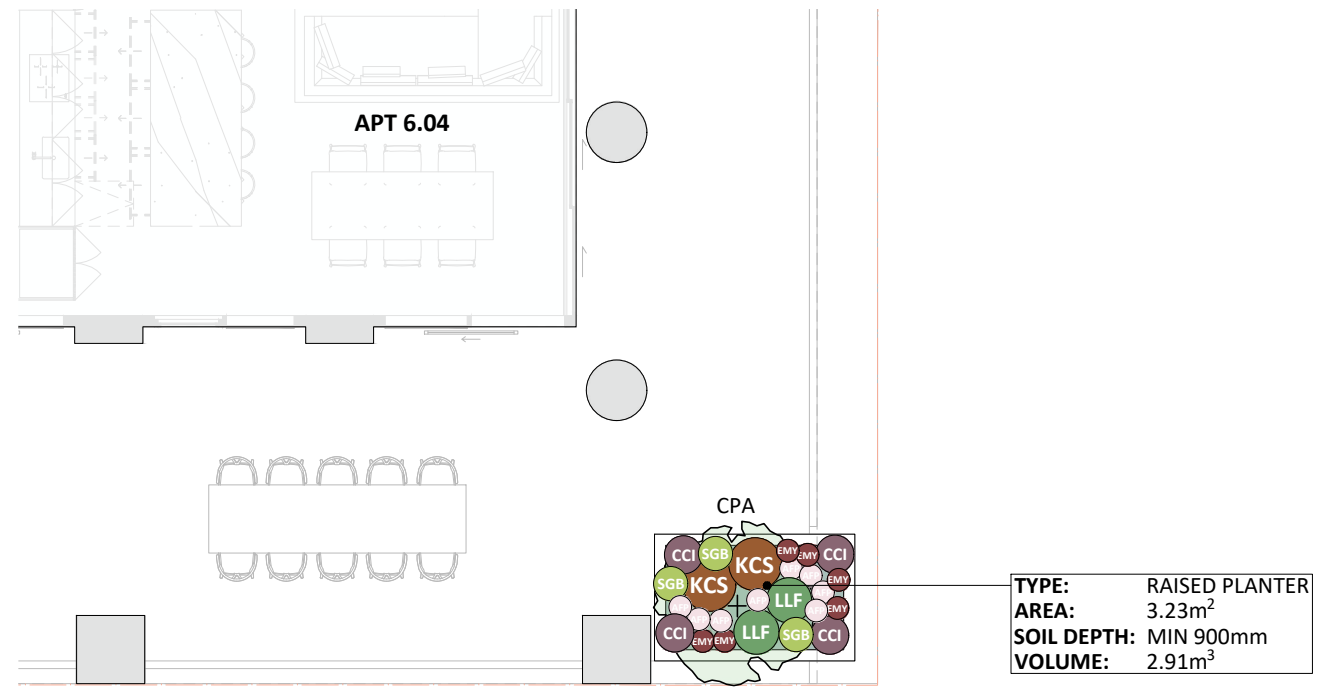
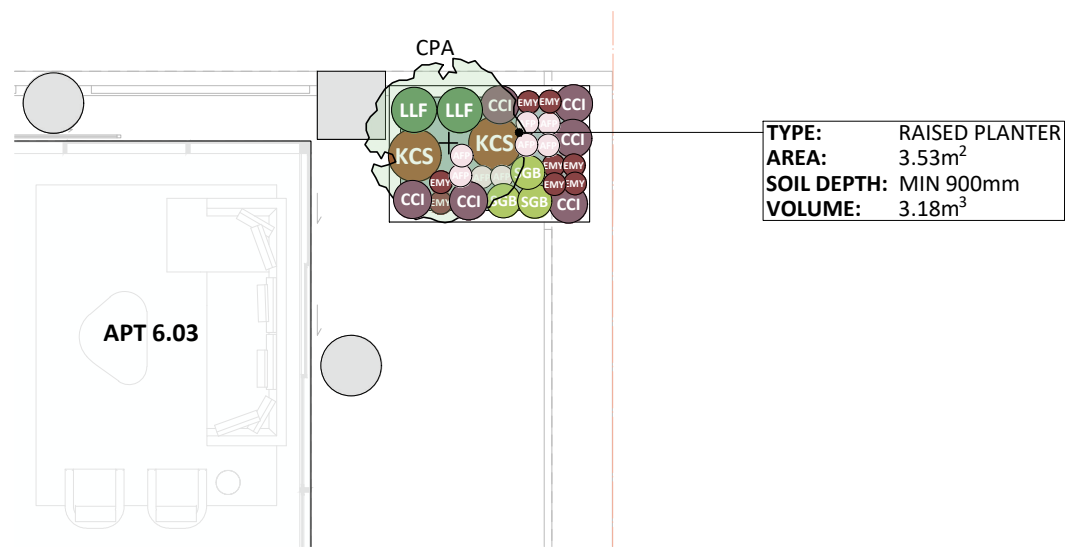
DRAWING TP06
 DATE DEC 2025
 REV A

SCALE 1:100 / A3
 STAGE PLANNING
 STATUS FOR REVIEW

FACADE PLANTER BOXES
 1009-1013 MOUNT ALEXANDER ROAD ESSENDON

This copied document to be made available for the sole purpose of enabling its consideration and review as part of a planning process under the Planning and Environment Act 1987. The document must not be used for any purpose which may breach any copyright

ADVERTISED PLAN



01 LEVEL 6 BALCONY PLANTER (APT 6.03)
1:100 @ A3

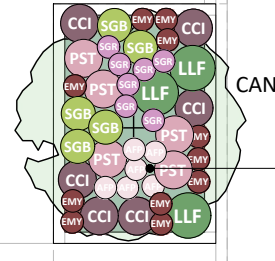
LEVEL 6 PLANTER
REFER TYPICAL PLANTER SECTIONS & ARCHITECTURAL SECTIONS FOR PROFILES
PLANTING: NATIVE & EXOTIC SPECIES MIX

02 LEVEL 6 BALCONY PLANTER (APT 6.04)
1:100 @ A3

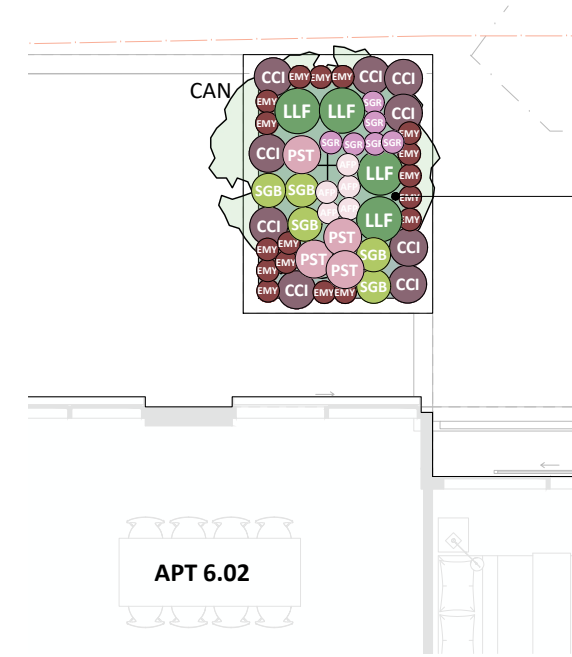
LEVEL 6 PLANTER
REFER TYPICAL PLANTER SECTIONS & ARCHITECTURAL SECTIONS FOR PROFILES
PLANTING: NATIVE & EXOTIC SPECIES MIX



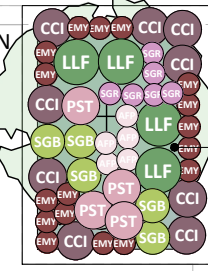
APT 6.01



TYPE: RAISED PLANTER
AREA: 5.30m²
SOIL DEPTH: MIN 900mm
VOLUME: 4.77m³



APT 6.02



TYPE: RAISED PLANTER
AREA: 6.11m²
SOIL DEPTH: MIN 900mm
VOLUME: 5.50m³

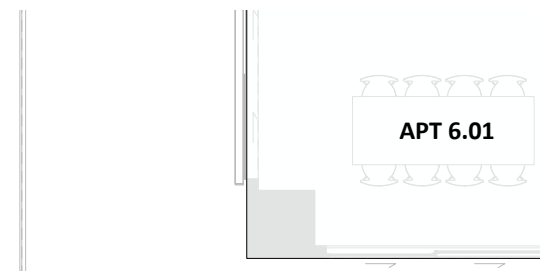
ADVERTISED PLAN

01 LEVEL 6 BALCONY PLANTER (APT 6.01)
 1:100 @ A3

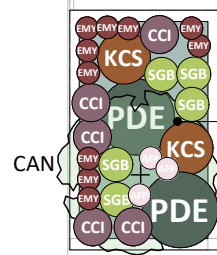
LEVEL 6 PLANTER
 REFER TYPICAL PLANTER SECTIONS &
 ARCHITECTURAL SECTIONS FOR PROFILES
 PLANTING: NATIVE & EXOTIC SPECIES MIX

03 LEVEL 6 BALCONY PLANTER (APT 6.02)
 1:100 @ A3

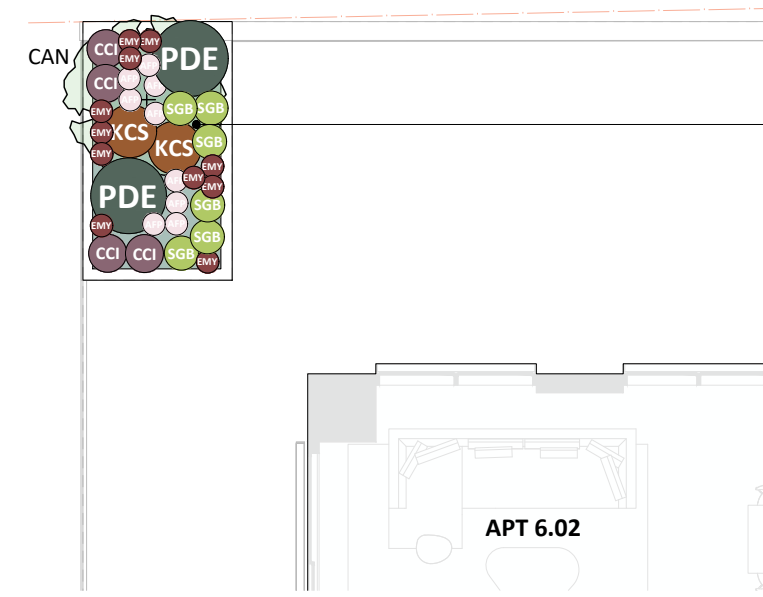
LEVEL 6 PLANTER
 REFER TYPICAL PLANTER SECTIONS &
 ARCHITECTURAL SECTIONS FOR PROFILES
 PLANTING: NATIVE & EXOTIC SPECIES MIX



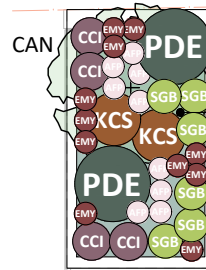
APT 6.01



TYPE: RAISED PLANTER
AREA: 4.88m²
SOIL DEPTH: MIN 900mm
VOLUME: 4.39m³



APT 6.02



TYPE: RAISED PLANTER
AREA: 5.12m²
SOIL DEPTH: MIN 900mm
VOLUME: 4.61m³

This copied document to be made available for the sole purpose of enabling its consideration and review as part of a planning process under the Planning and Environment Act 1987. The document must not be used for any purpose which may breach any copyright

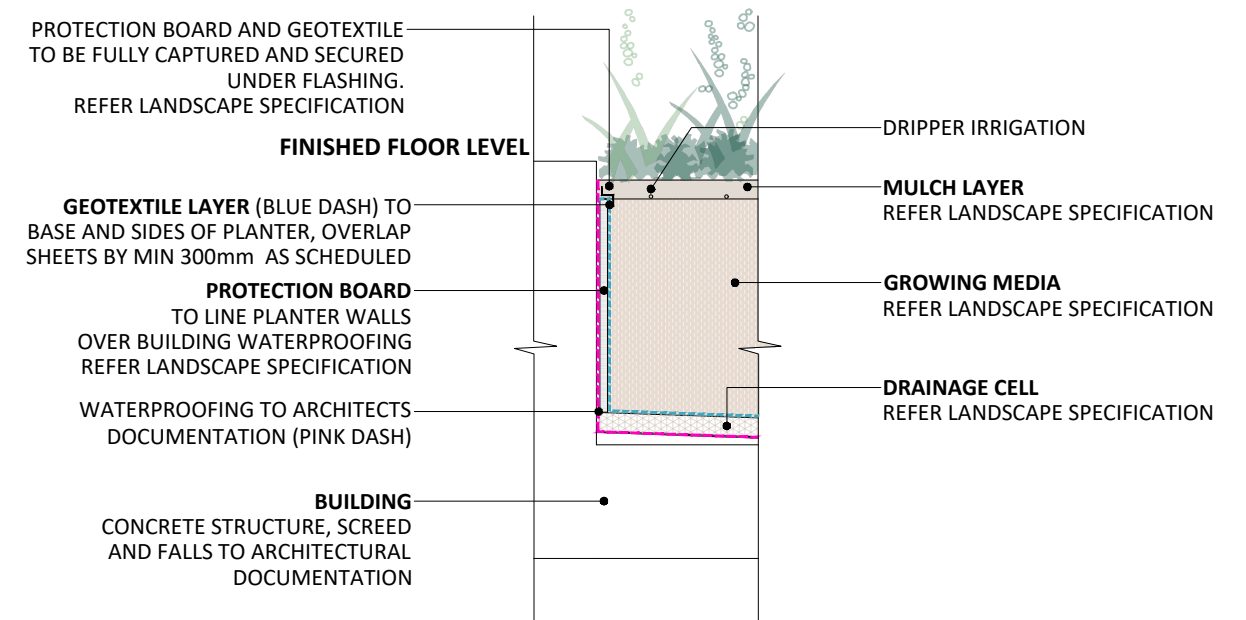
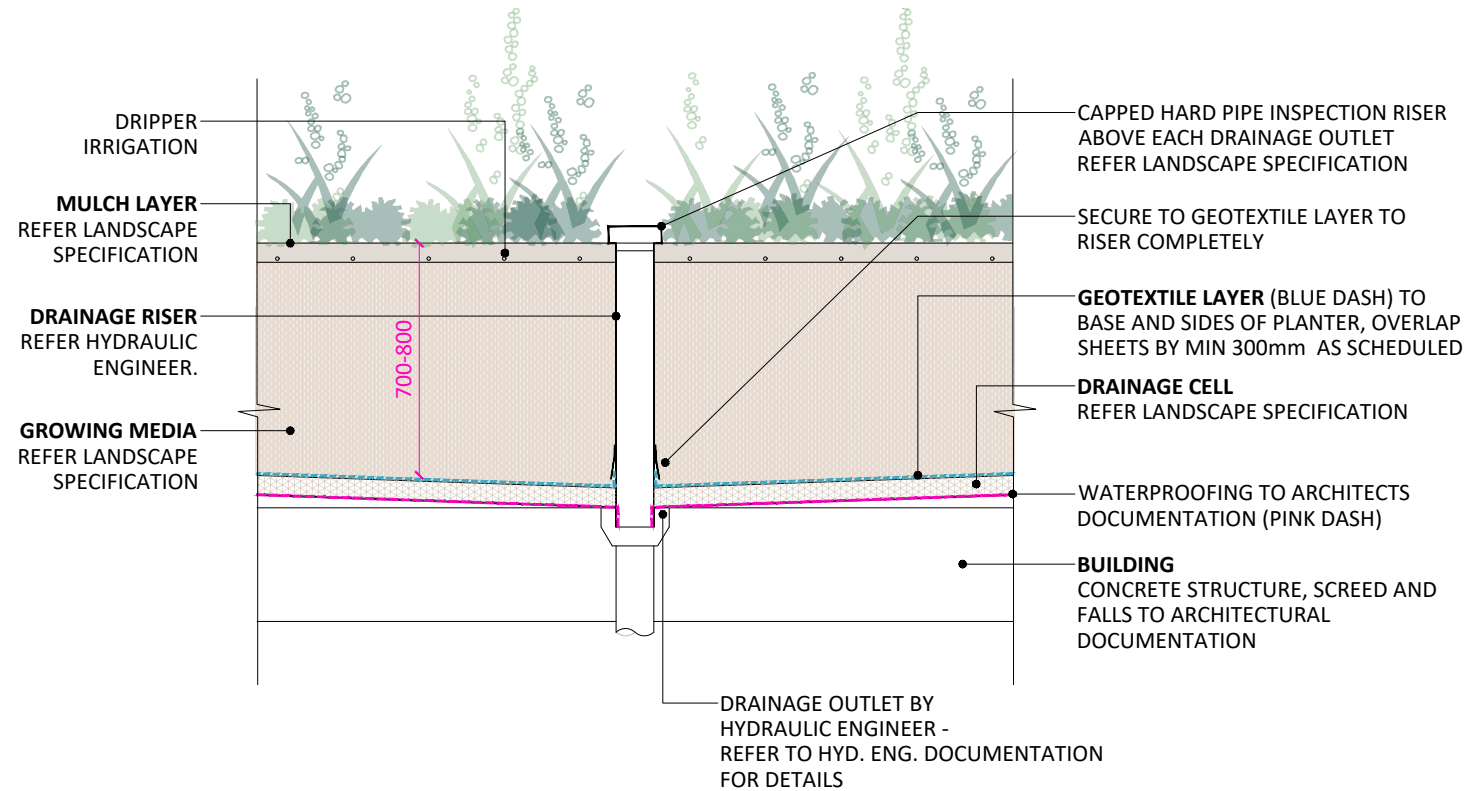
02 LEVEL 6 BALCONY PLANTER (APT 6.01)
 1:100 @ A3

LEVEL 6 PLANTER
 REFER TYPICAL PLANTER SECTIONS &
 ARCHITECTURAL SECTIONS FOR PROFILES
 PLANTING: NATIVE & EXOTIC SPECIES MIX

04 LEVEL 6 BALCONY PLANTER (APT 6.02)
 1:100 @ A3

LEVEL 6 PLANTER
 REFER TYPICAL PLANTER SECTIONS &
 ARCHITECTURAL SECTIONS FOR PROFILES
 PLANTING: NATIVE & EXOTIC SPECIES MIX

This copied document to be made available for the sole purpose of enabling its consideration and review as part of a planning process under the Planning and Environment Act 1987. The document must not be used for any purpose which may breach any copyright



01 TYP. LOBBY PLANTER DETAIL
NTS

NOTES
PIPED CONNECTION SHOWN INDICATIVELY, SUBJECT TO HYD. ENGINEERING DETAILS & SPECIFICATIONS.

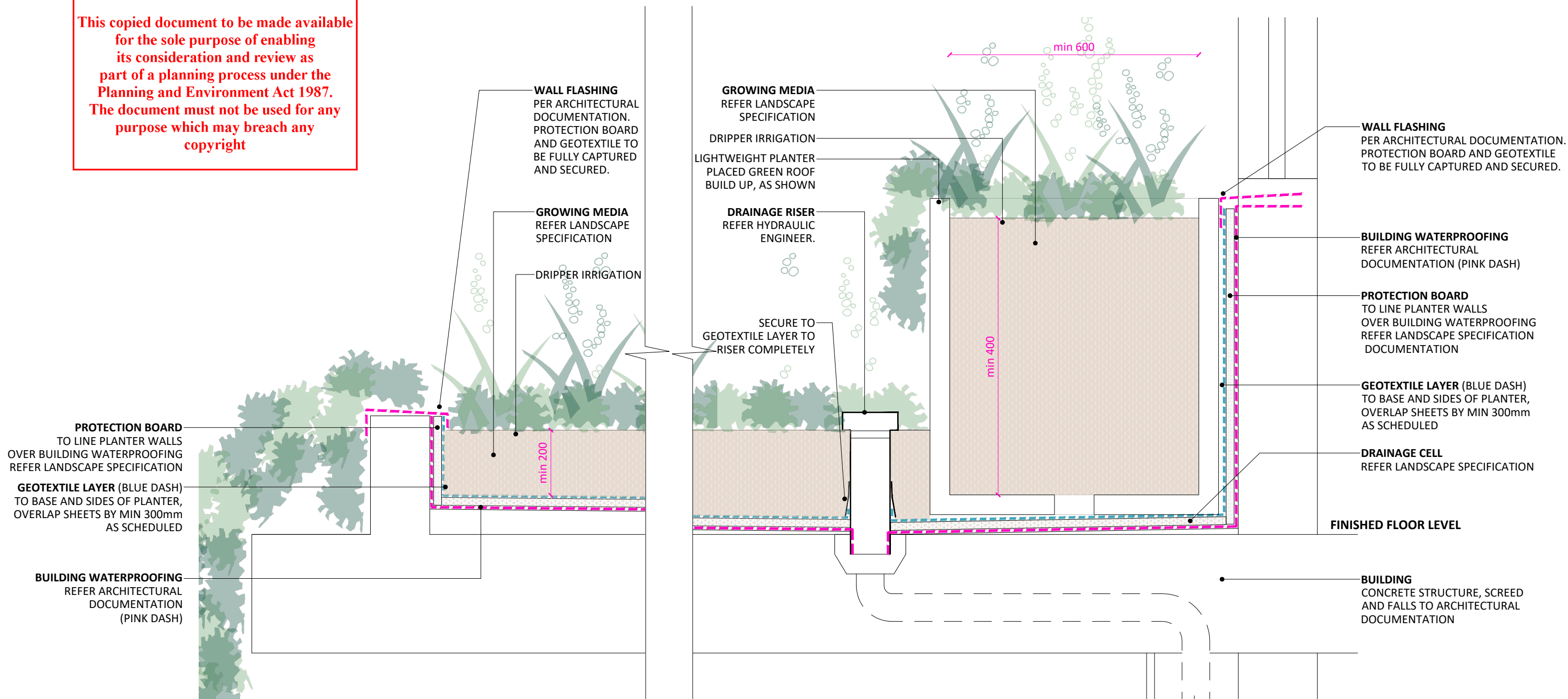
02 TYP. LOBBY PLANTER DETAIL
NTS

NOTES
PIPED CONNECTION SHOWN INDICATIVELY, SUBJECT TO HYD. ENGINEERING DETAILS & SPECIFICATIONS.

ADVERTISED PLAN

ADVERTISED PLAN

This copied document to be made available for the sole purpose of enabling its consideration and review as part of a planning process under the Planning and Environment Act 1987. The document must not be used for any purpose which may breach any copyright



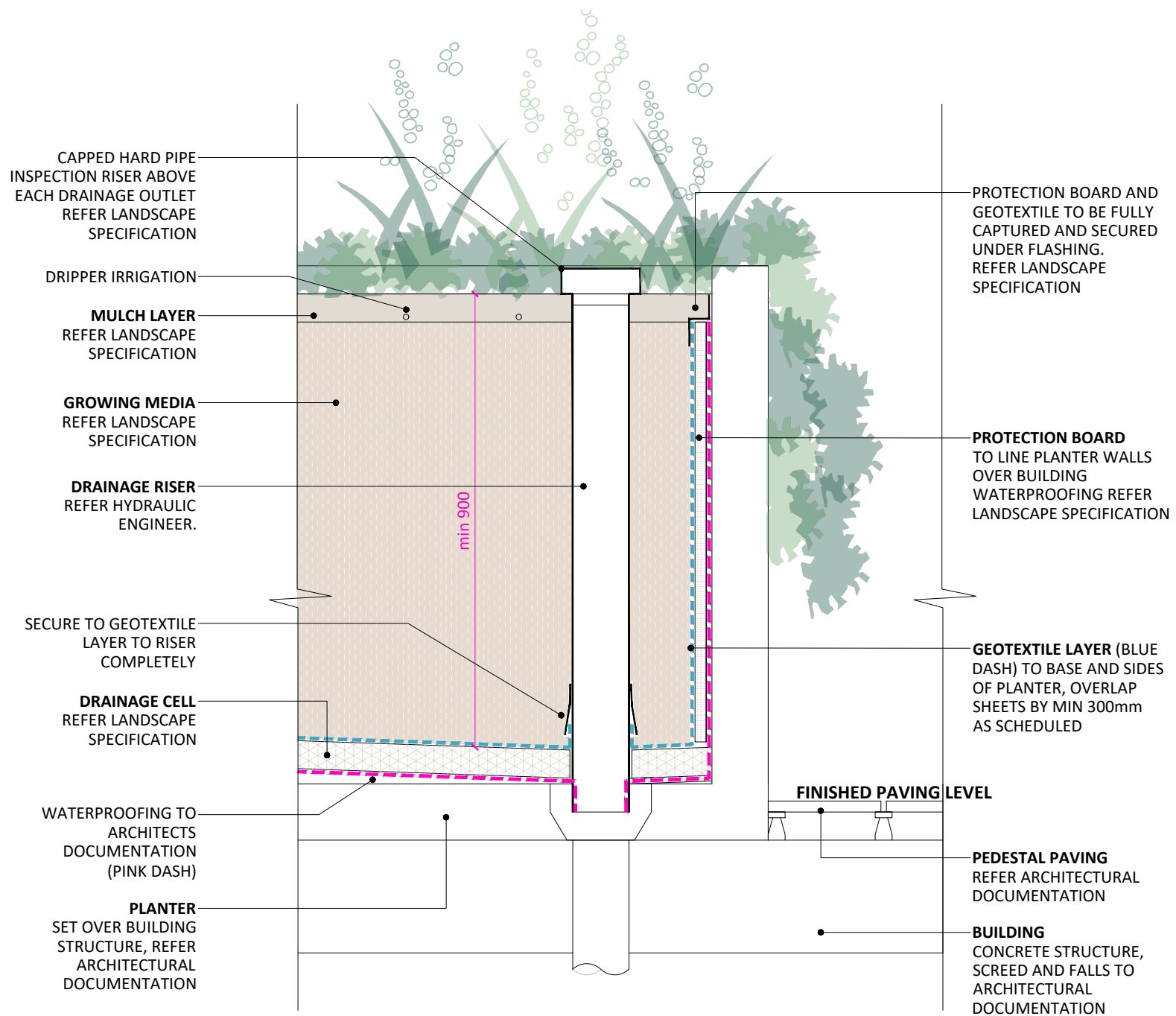
01

GREEN ROOF SECTION

NTS

NOTES

PIPED CONNECTION SHOWN INDICATIVELY, SUBJECT TO HYD. ENGINEERING DETAILS & SPECIFICATIONS.

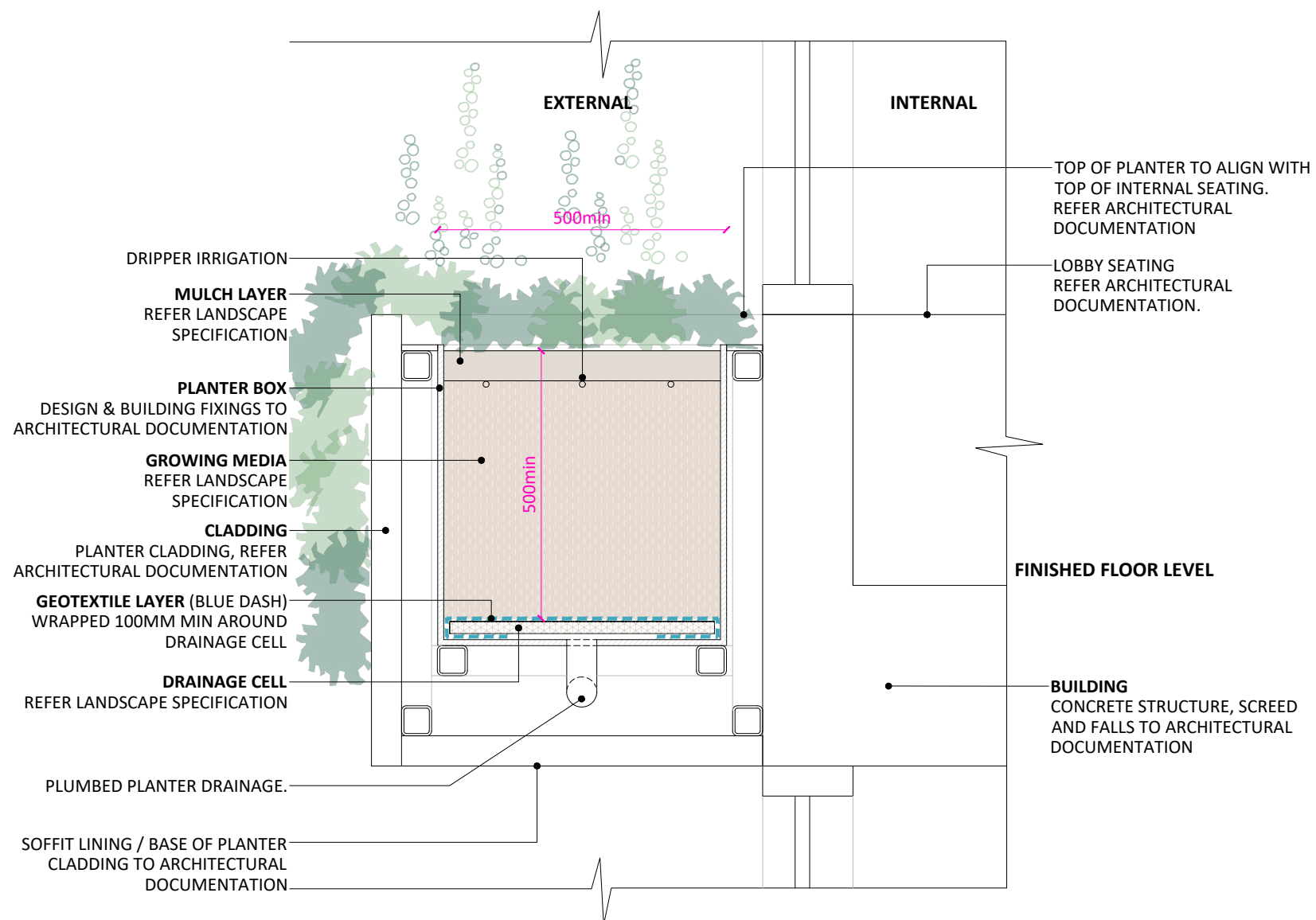


ADVERTISED PLAN

This copied document to be made available for the sole purpose of enabling its consideration and review as part of a planning process under the Planning and Environment Act 1987. The document must not be used for any purpose which may breach any copyright

01 TYPICAL TERRACE PLANTER SECTION
NTS

NOTES
PIPED CONNECTION SHOWN INDICATIVELY, SUBJECT TO HYD. ENGINEERING DETAILS & SPECIFICATIONS.

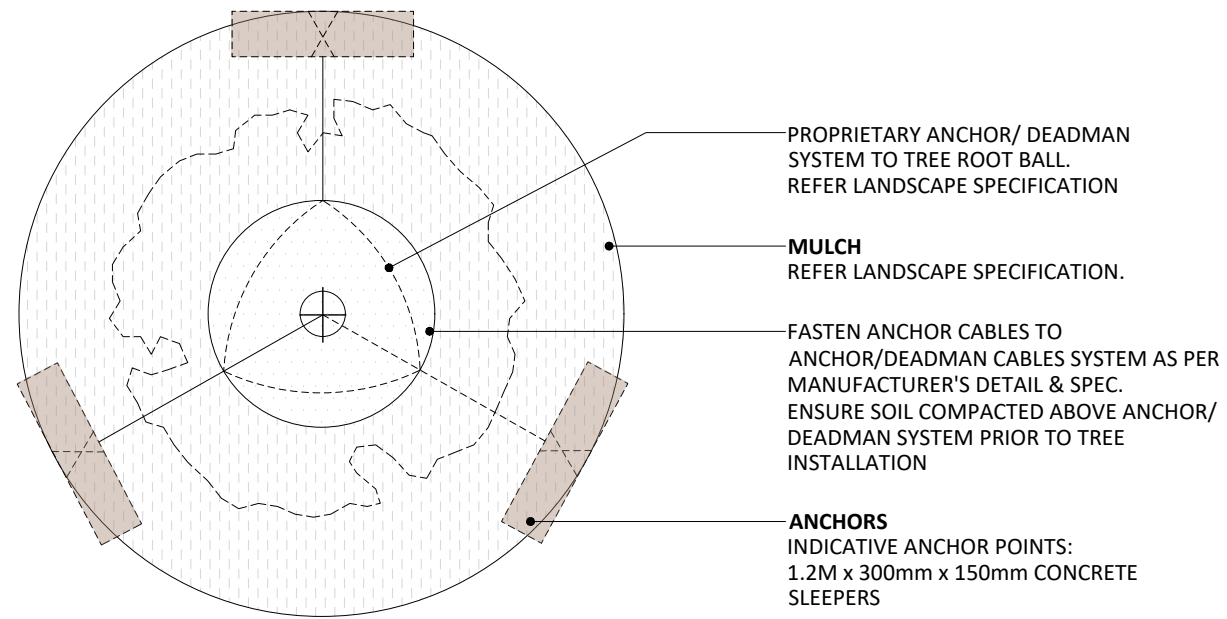


**ADVERTISED
PLAN**

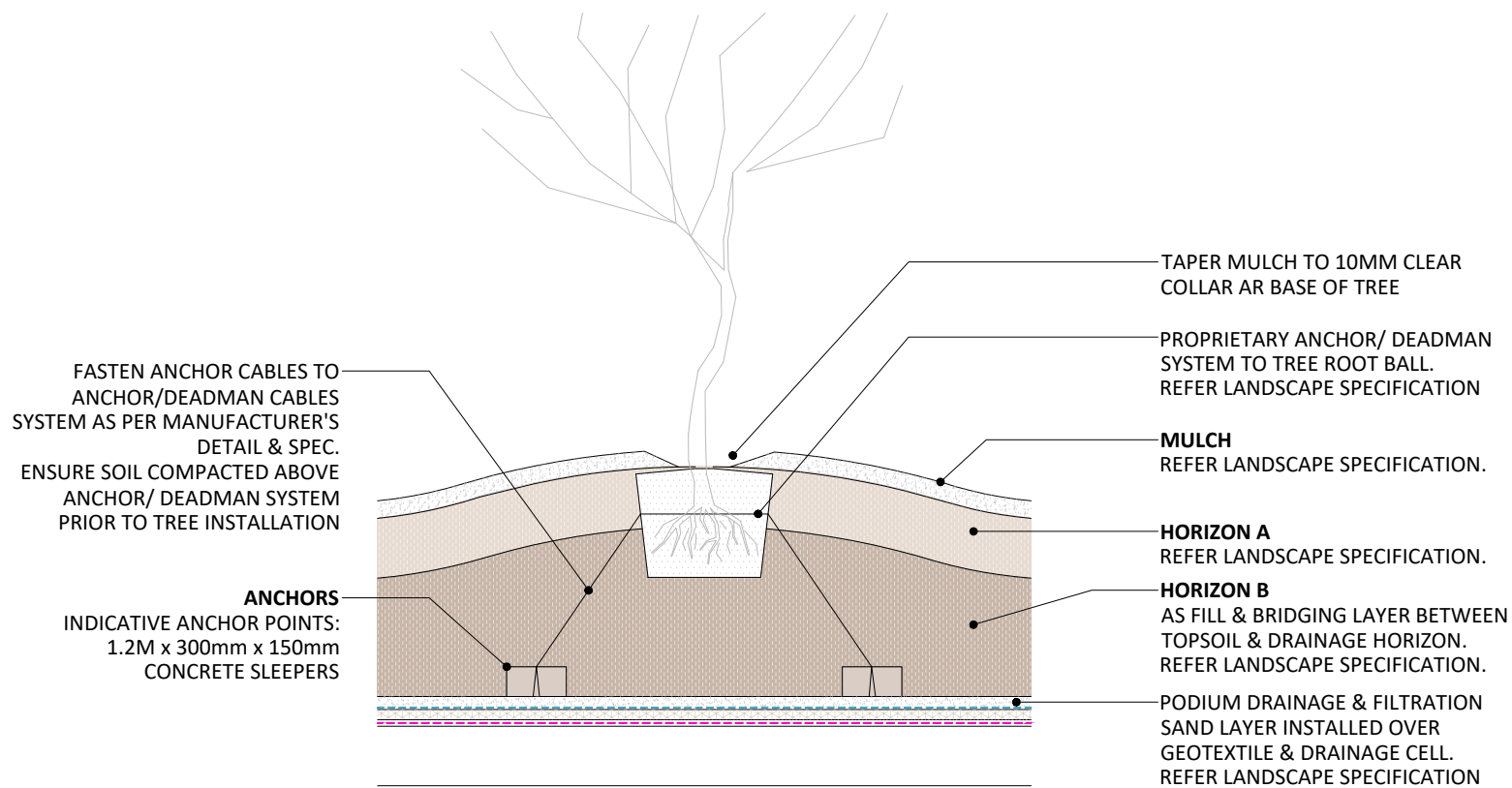
This copied document to be made available for the sole purpose of enabling its consideration and review as part of a planning process under the Planning and Environment Act 1987. The document must not be used for any purpose which may breach any copyright

01 TYP. FACADE PLANTER DETAIL
NTS

NOTES
PIPED CONNECTION SHOWN INDICATIVELY, SUBJECT TO HYD. ENGINEERING DETAILS & SPECIFICATIONS.



01 TYP. ANCHORED TREE - PLAN
NTS



02 TYP. ANCHORED TREE - SECTION
NTS

ADVERTISED
PLAN

This copied document to be made available for the sole purpose of enabling its consideration and review as part of a planning process under the Planning and Environment Act 1987. The document must not be used for any purpose which may breach any copyright