



Vipac Engineers and Scientists Limited  
279 Normanby Rd, Port Melbourne, VIC 3207 Australia  
Private Bag 16, Port Melbourne, VIC 3207, Australia  
t. +61 3 9647 9700 | e. melbourne@vipac.com.au  
w. www.vipac.com.au | A.B.N. 33 005 453 627 | A.C.N. 005 453 627

GrayKinnane Pty Ltd

1009-1013 Mt Alexander Road, Essendon




Wind Impact Assessment

**This copied document to be made available for the sole purpose of enabling its consideration and review as part of a planning process under the Planning and Environment Act 1987. The document must not be used for any purpose which may breach any copyright**

30N-25-0460-TNT-126962-0

**ADVERTISED  
PLAN**

15 December 2025

<b>Job Title:</b> 1009-1013 Mt Alexander Road, Essendon			
<b>Report Title:</b> Wind Impact Assessment			
<b>Document Reference:</b> 30N-25-0460-TNT-126962-0			
<b>Prepared For:</b> GrayKinnane Pty Ltd	<b>Prepared By:</b> Vipac Engineers and Scientists Limited 279 Normanby Rd, Port Melbourne, VIC 3207 Australia		
<b>Contact:</b> Andrew Gray <b>Tel:</b> 0419 518 613	<b>Tel:</b> +61 3 9647 9700		
<b>Author:</b> Zhuyun Xu 15 Dec 2025	 Principal Engineer		
<b>Reviewer:</b> Peyman Mayeli 10 Dec 2025	 Senior Engineer		
<b>Issued By:</b> Mark Leondaraki 15 Dec 2025	 Wind Team Coordinator		
<b>Revision History:</b>			
<b>Rev. #</b>	<b>Comments / Details of change(s) made</b>	<b>Date</b>	<b>Revised by:</b>
Rev. 00	Original issue	05 Dec 2025	

NOTE: This report has been prepared solely for the benefit of the client to whom this report is addressed for use herein ("Client") unless otherwise agreed in writing by Vipac Engineers and Scientists Limited ACN 005 453 627 ("Vipac"). Neither the whole of this report or any part of it may be published, duplicated or circulated without the prior written approval of Vipac except as required by law. Vipac does not assume any responsibility or liability for any losses suffered as a result of the publication, duplication or circulation of this report and excludes all liability whatsoever to any third party who may use or rely on the whole, or any part of this report.

Vipac has prepared this report using all reasonable care, skill and due diligence within the time period, budget and resources allocated to Vipac as agreed with the Client. Vipac excludes all liability to the Client whatsoever, whether in whole or in part, for the Client's use or reliance on the report other than for the purposes set out in the report, or any matters outside the agreed scope of the work.

For the purposes of preparing this report, reliance has been placed upon the material, representations, information and instructions provided to Vipac unless otherwise stated in the report. Originals of documents provided have not been required and no audit or examination of the validity of the documentation, representations, information or instructions provided has been undertaken except to the extent otherwise stated in this report. Information and findings contained in this report are based on Vipac's interpretation of data collected.

This document contains commercial, conceptual, engineering and other information that is proprietary to Vipac. The inclusion of this information in the report does not grant the Client any license to use the information without Vipac's prior written permission.

## Executive Summary

**GrayKinnane Pty Ltd** commissioned Vipac Engineers and Scientists Ltd to prepare a statement of wind effects for the ground level areas adjacent to the proposed development at **1009-1013 Mt Alexander Road**, Essendon. This appraisal is based on Vipac's experience as a wind-engineering consultancy.

Drawings of the proposed development were provided by **CARR** in **Dec 2025**.

The findings of this study can be summarized as follows. **With the proposed design:**

- Wind conditions in the ground level footpath areas and access ways would be expected to be within the **walking** comfort criterion.
- The building entrances would be expected to be within the **standing** comfort criterion.
- The terraces and balconies would be expected to be within the recommended **walking** comfort criterion.
- The gust wings are expected to fulfil **safety** criterion.

As a general statement, educating occupants about wind conditions at open terrace/balcony areas during high-wind events and fixing loose, lightweight furniture on the terrace is highly recommended.

The assessments provided in this report have been made based on experience of similar situations in Melbourne and around the world. As with any opinion, it is possible that an assessment of wind effects based on experience and without experimental validation may not account for all complex flow scenarios in the vicinity.

## Table of Contents

<b>1</b>	<b>Introduction .....</b>	<b>5</b>
<b>2</b>	<b>Analysis Approach .....</b>	<b>7</b>
2.1	Site Exposure .....	8
2.2	Regional Wind Climate.....	9
2.3	Building Geometry and Orientation .....	10
2.4	Flow interactions with Adjacent Developments.....	11
2.5	Assessment Criteria .....	12
2.5.1	Use of Adjacent Pedestrian Occupied Areas & Recommended Comfort Criteria.....	13
2.5.2	Terrace / Balcony Recommended Criterion Discussion .....	13
<b>3</b>	<b>Pedestrian Level Wind Effects.....</b>	<b>17</b>
3.1	Discussion & Recommendations .....	17
<b>4</b>	<b>Conclusions .....</b>	<b>18</b>
	Appendix A Environmental Wind Effects .....	19
	Appendix B References .....	20
	Appendix C Drawings List.....	21

## 1 Introduction

Vipac Engineers and Scientists has been commissioned by **GrayKinnane Pty Ltd** to carry out an appraisal of the pedestrian wind effects at the ground level of the proposed development at **1009-1013 Mt Alexander Road, Essendon**.

Strong winds in pedestrian areas are frequently encountered in central business districts of cities around the world, including Sydney, Melbourne, and Brisbane. Wind characteristics such as the mean speed, turbulence and ambient temperature determine the extent of disturbance to users of pedestrian areas. These disturbances can cause both comfort and safety problems and require careful consideration to mitigate successfully.

The proposed development is a 3BM+GF+8-Levels residential building with a maximum height of 30.7 m from street level. The site is bounded by Mt Alexander Road to the northeast and existing development in the remaining directions. A plan of the proposed development site and the northeast elevation of the building are shown in Figure 1 and Figure 2, respectively.

This report details the opinion of Vipac as an experienced wind engineering consultancy regarding the wind effects in ground level footpath areas adjacent to the development as proposed. No wind tunnel testing has been carried out for this development at this stage. Vipac has carried out wind tunnel studies on a large number of developments of similar shape and having similar exposure to that of the proposed development. These serve as a valid reference for the prediction of wind effects. Empirical data for typical buildings in boundary layer flows has also been used to estimate the likely wind conditions on the ground level areas of the proposed development [2] & [3].

Drawings of the proposed development were supplied to Vipac by **CARR** in **Dec 2025**. A list of drawings supplied is provided in Appendix C of this report.

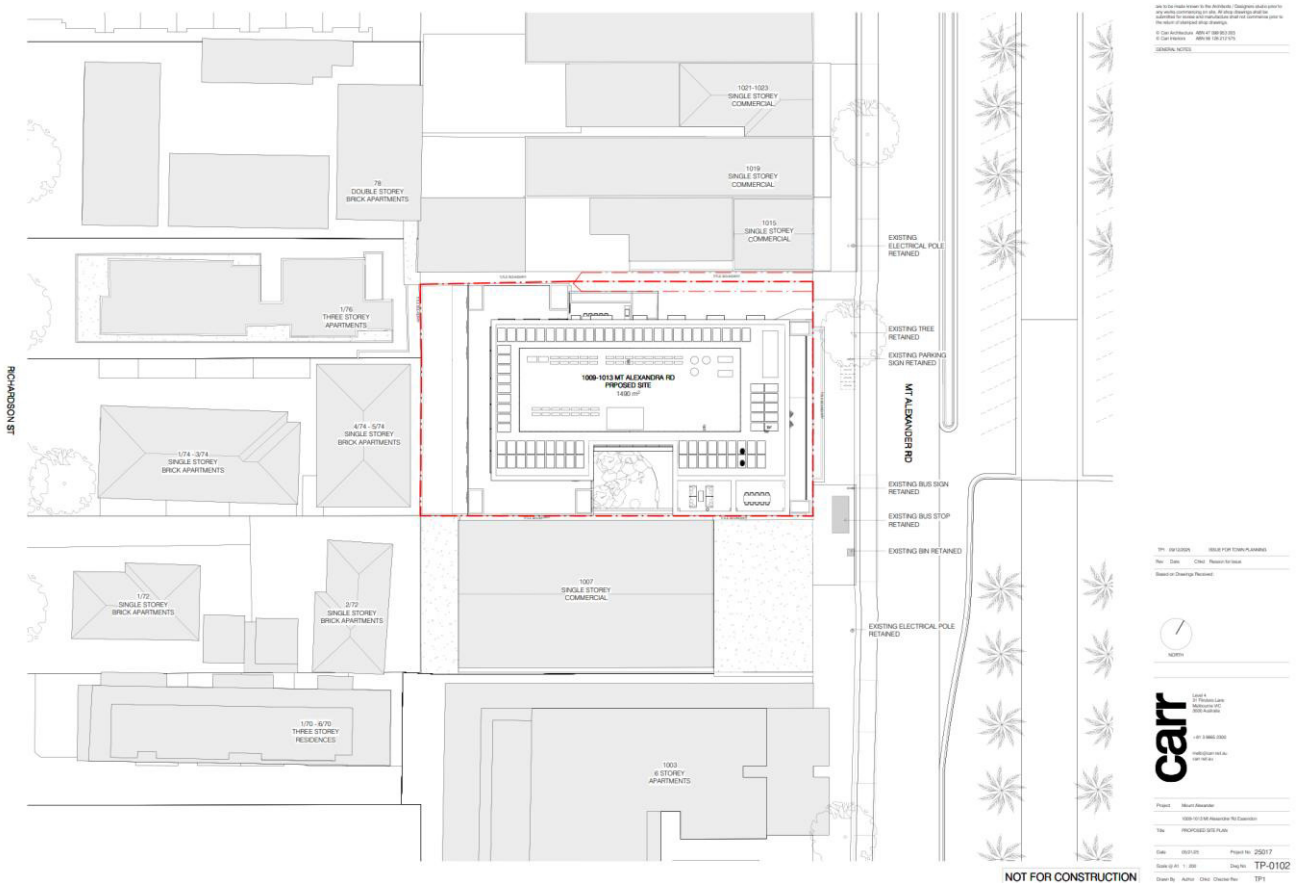


Figure 1: A plan of the proposed development site.

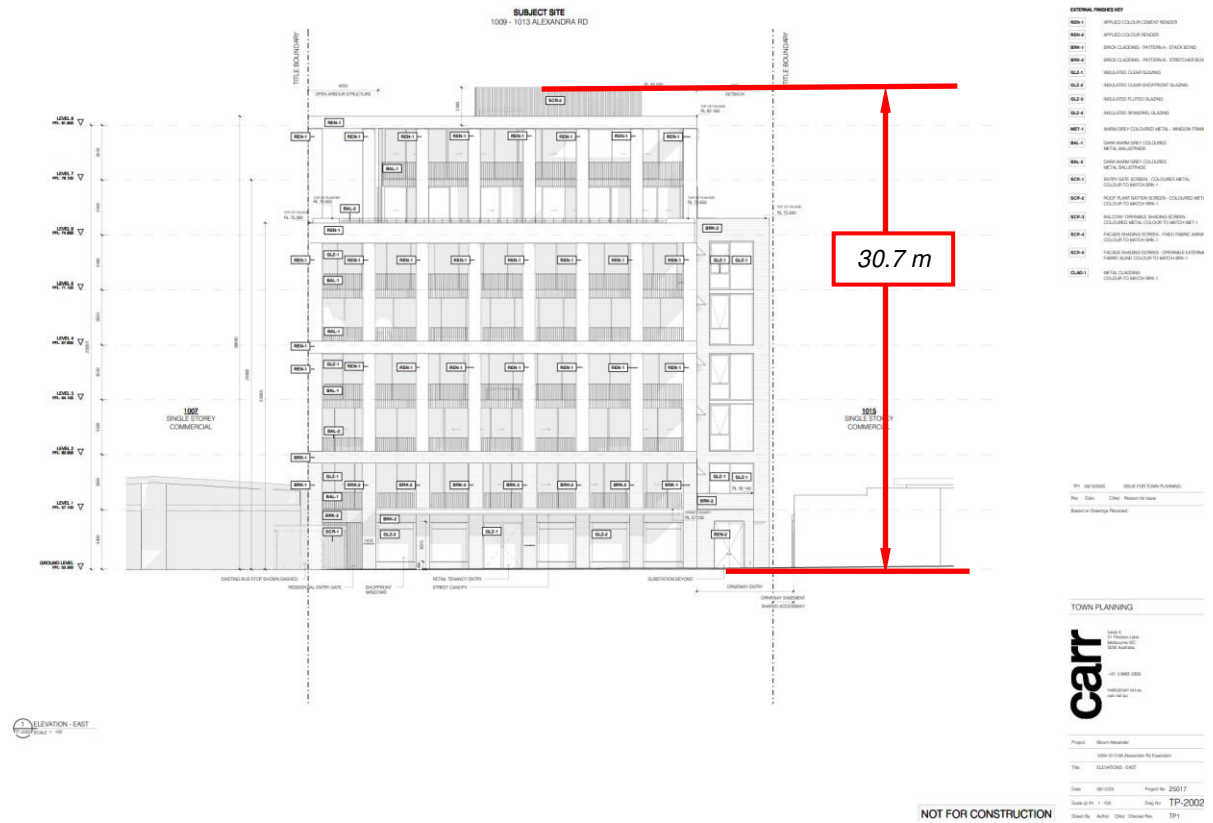


Figure 2: Northeast elevation the proposed development.

## 2 Analysis Approach

In assessing whether a proposed development is likely to generate adverse wind conditions in ground level footpath areas, Vipac has considered the following five main points:

- The exposure of the proposed development to wind;
- The regional wind climate;
- The geometry and orientation of the proposed development;
- The interaction of flows with adjacent developments; and
- The assessment criteria determined by the intended use of the areas affected by wind flows generated or augmented by the proposed development.

The pedestrian wind comfort at specific locations of ground level footpath areas may be assessed by predicting the gust and mean wind speeds with a probability of 0.1% and 20% expected at that location. The location may be deemed generally acceptable for its intended use while gust and mean wind speeds are within the threshold values noted in Section 2.5. Where Vipac predicts that a location would not meet its appropriate comfort criterion, the use of wind control devices and/or local building geometry modifications to achieve the desired comfort rating may be recommended. For complex flow scenarios or where predicted flow conditions are well in excess of the recommended criteria, Vipac recommends scale model wind tunnel testing to determine the type and scope of the wind control measures required to achieve acceptable wind conditions.

## 2.1 Site Exposure

The proposed development is located on a relatively flat terrain. The site is surrounded within an approximately 2 km radius predominately by low to mid-rise developments, with Essendon airport lies to the north. A satellite image showing these site surroundings is shown in Figure 3.

Considering the immediate surroundings and terrain, for the purposes of this study, the site of the proposed development is assumed to be within Terrain Category 3 for all wind directions (Figure 3).

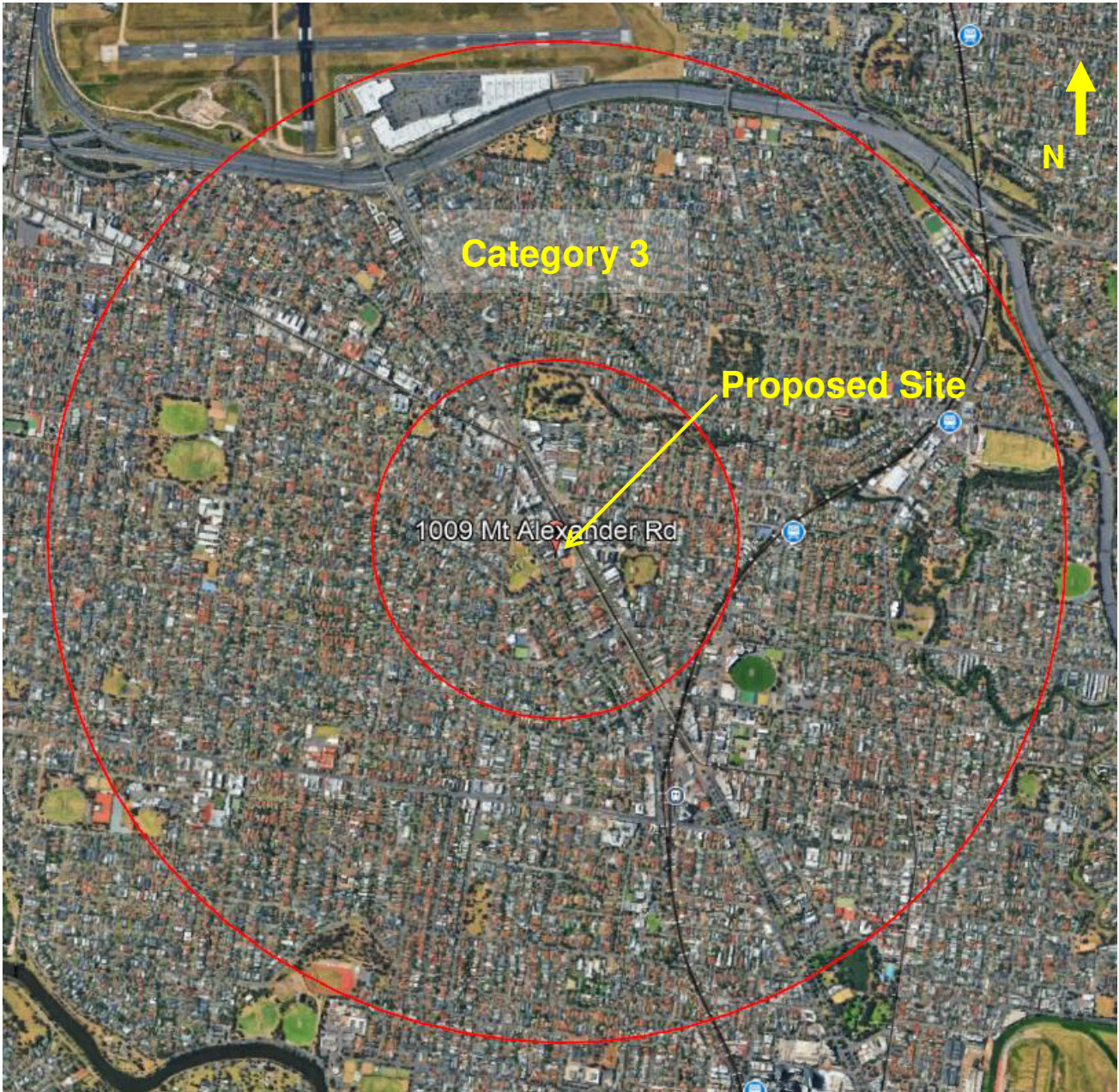


Figure 3: Assumed terrain categories for wind speed estimation.

## 2.2 Regional Wind Climate

The mean and gust wind speeds have been recorded in the Melbourne area for over 30 years. This data has been analysed and the directional probability distribution of wind speeds has been determined. The directional distribution of hourly mean wind speed at the gradient height, with a probability of 0.1% of time and 20% of time exceeded are shown in Figure 4. The wind data at this free stream height is common to all Melbourne city sites and may be used as a reference to assess ground level wind conditions at the site.

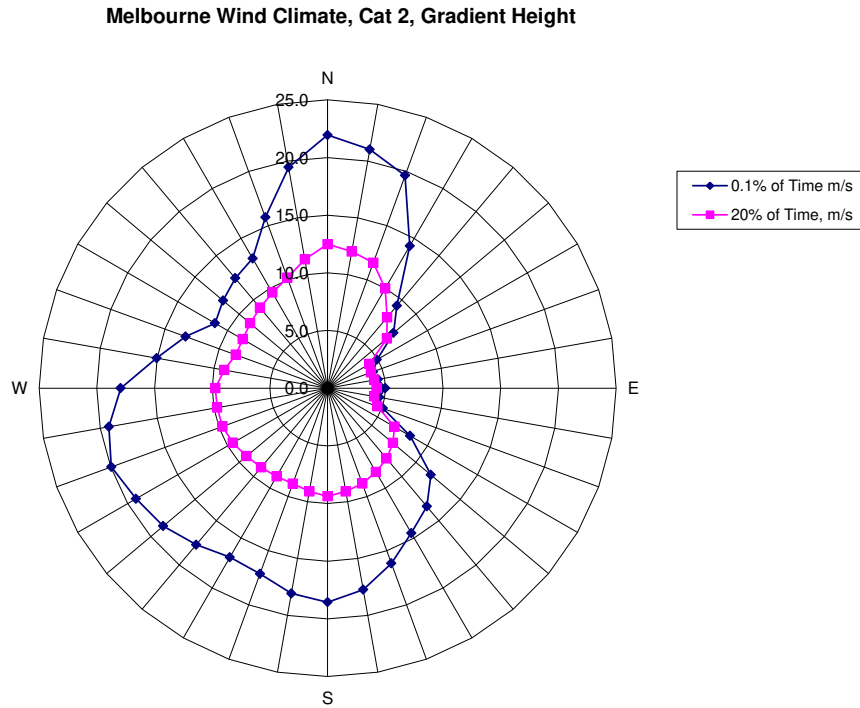


Figure 4: Directional Distribution of Mean Hourly Wind Velocities (m/s) for 0.1% and 20% exceeded at Gradient Height for Melbourne.

## 2.3 Building Geometry and Orientation

The proposed development is a 3 BM+GF+8-Levels mixed-use building. The overall plan-form dimensions are approximately 30m x 50.2m as shown in Figure 5. The main entrance is located on the entry laneway from Mt Alexander Road. The building has a set back from southwest boundary.

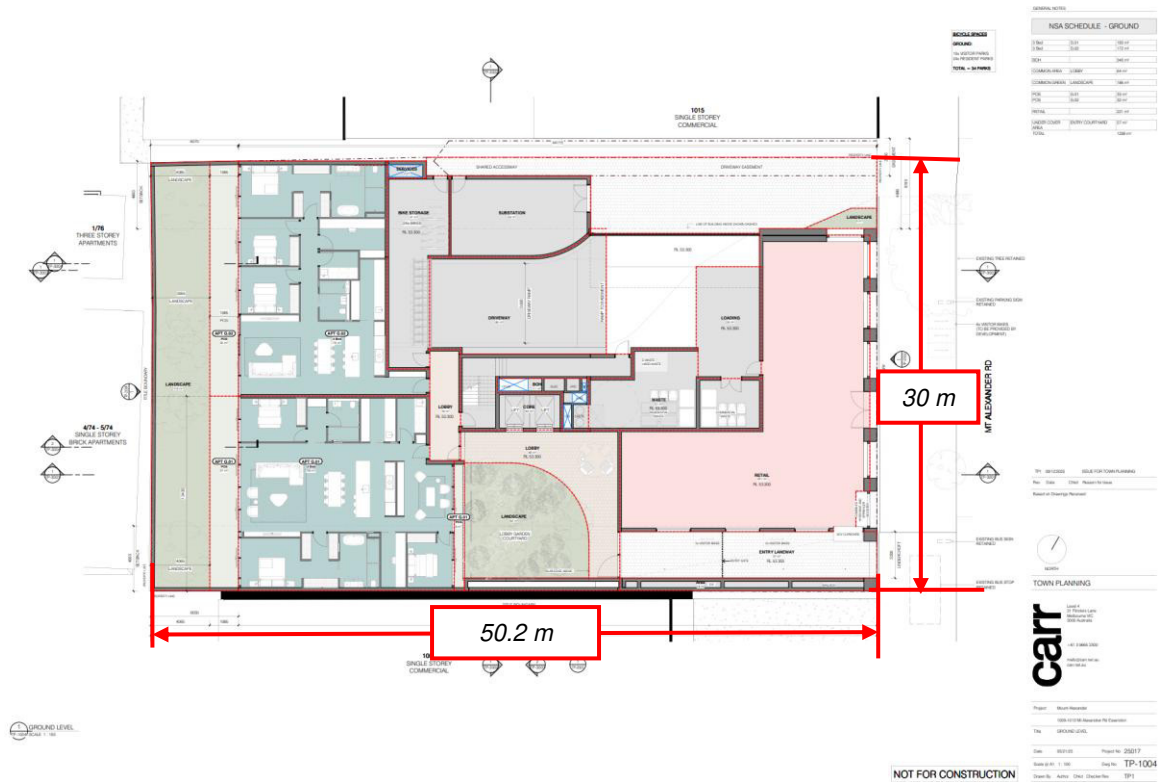


Figure 5: Ground floor plans with the plan-form dimensions overlaid.

## 2.4 Flow interactions with Adjacent Developments

The immediately adjacent developments are shown in Figure 6. At ground level, the site is exposed to direct winds from the northerly directions channelling along Mt Alexander Road. The building is oriented such that limited impacts from corner acceleration of northerly winds is expected at ground level. The development is taller than the surrounding buildings and so is exposed to winds from all directions at the upper levels.



Figure 6: Immediately adjacent surroundings and their approximate number of floors (F)

## 2.5 Assessment Criteria

The following wind comfort criteria detailed in Table 1 were applied in this study.

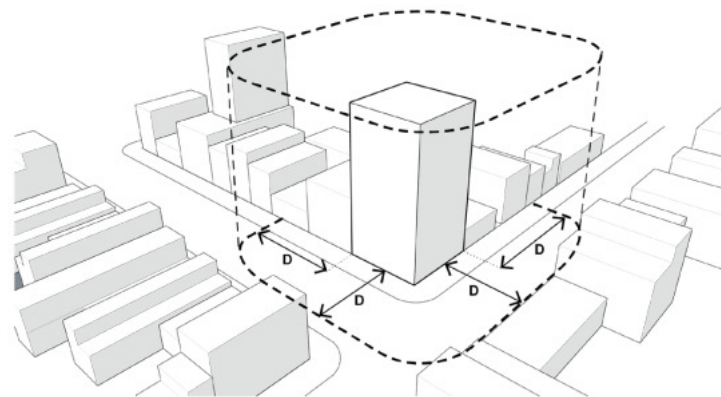
Table 1: Wind Comfort Criteria as per Clause 58.04-4

Unsafe	Comfortable
Annual maximum 3 second gust wind speed exceeding <b>20m/sec</b> with a probability of exceedance of 0.1% considering at least 16 wind directions.	Hourly mean wind speed or gust equivalent mean speed from all wind directions combined with probability of exceedance less than 20% of the time, equal to or less than:  <b>3m/sec</b> for sitting areas (outdoor cafés) <b>4m/sec</b> for standing areas (window shopping, queuing) <b>5m/sec</b> for walking areas (steady steps for most pedestrians)

This criterion specifically calls for the safety criterion to be used to assess infrequent winds (e.g. peak event of  $\leq 0.1\%$  of the time); and the perceived pedestrian comfort to be assessed based on frequently occurring winds (e.g. winds that occurs 80% of the time).

In Table 1, the mean wind velocity is defined as the maximum of hourly mean or gust equivalent mean (Gust/1.85)

This criterion specifies that safe and comfortable wind conditions must be achieved in publicly accessible areas within a distance equal to half the longest width of the building measured from all facades or half the overall height of the building, whichever is greater, as shown in Figure 7.



ASSESSMENT DISTANCE D = GREATER OF:  
 L/2 (HALF LONGEST WIDTH OF BUILDING) OR  
 H/2 (HALF OVERALL HEIGHT OF BUILDING)

Figure 7: Assessment distance.

### 2.5.1 Use of Adjacent Pedestrian Occupied Areas & Recommended Comfort Criteria

The consideration of the (intended) function of the environment heavily influences the appropriateness of the recommended wind comfort criteria. For example, people frequenting locations such as parks are will likely tolerate a windier environment when compared to people dining at an outdoor café.

This is partly due to the pedestrian’s judgement in clothing and predetermined expectation of the wind environment and partly due to the sensitivity of their activities to wind. For example, patrons at outdoor dining areas are highly sensitivity to wind due to the stationary nature of the activity; whereas pedestrians on the public footpaths may maintain a level of comfort under otherwise uncomfortable conditions by partaking in general activities performed on the footpath such as walking.

The following table lists the specific areas adjacent to the proposed development and the corresponding recommended criteria.

*Table 2: Recommended application of criteria*

<b>Area</b>	<b>Specific location</b>	<b>Recommended Criteria</b>
Public Footpaths, Access ways	Along Mt Alexander Road, the entry laneway and sheared access way (Figure 8)	Walking
Building Entrances	Main Building Entrance on the entry laneway and retail entrance along Mt Alexander Road (Figure 8)	Standing
Balcony/Terraces	Up the height of the building and communal terrace on rooftop (Figures 9 to 12)	Walking (See discussion below)

### 2.5.2 Terrace / Balcony Recommended Criterion Discussion

There are Private Balconies and Terraces located up the height of the development. Vipac recommends as a minimum that balcony/terrace areas meet the criterion for walking since:

- these areas are not public spaces;
- the use of these areas is optional, and only intended to be used on fair weather days with calm winds;
- residents at private open spaces can chose to retreat indoors during uncomfortable wind conditions, whiel a pedestrian or person using a public area may not have this option.
- many similar developments in Melbourne and other Australian capital cities experience wind conditions on balconies and elevated deck areas in the vicinity of the criterion for walking.





Recommended to fulfil Walking

Figure 9: Level 1 plan with recommended wind criteria overlaid.



Recommended to fulfil Walking

Figure 10: Level 2-5 plan with recommended wind criteria overlaid.



## **3 Pedestrian Level Wind Effects**

### **3.1 Discussion & Recommendations**

The proposed design has several features that are expected to be beneficial to the pedestrian wind environment. This is inclusive but not limited to the following:

- Residential entrance setback, retail entrance away from the building corners.

Due to the proposed height above the surrounding areas, the proposed development is particularly exposed to adverse northerly winds. Such that high wind levels are expected along Mt Alexander Road. However, the proposed development has a slight setback design from Mt Alexander Road on the ground floor and deep setback for the lobby entry. The proposed development lies in the middle of the two adjacent buildings which has a limited chance of the high corner accelerations. As such, the surrounding pedestrian streetscape and access ways are expected to be within the recommended walking comfort criterion.

The main entrance is located at a laneway set back from Mt Alexander Road. It is expected to have standing conditions or better. The retail entrance along Mt Alexander Road is also expected to fulfil the recommended standing criterion.

The private balconies and terraces are expected to have windspeeds within the walking comfort criterion.

The gust winds are expected to fulfil safety criterion.

It should be noted that this study is based on experience only and has not utilised any experimental data for the analysis.

## 4 Conclusions

An appraisal of the likely wind conditions at the pedestrian ground level and private balcony/terrace areas of the proposed development at **1009-1013 Mt Alexander Road**, Essendon has been made.

Vipac has carefully considered the form and exposure of the proposed development, nominated criteria for various public areas according to their function and referred to past experience to produce our opinion of likely wind conditions.

The findings of this study can be summarised as follows:

### With proposed design:

- Wind conditions in the ground level footpath areas and access ways would be expected to be within the **walking** comfort criterion.
- The building entrances would be expected to be within the **standing** comfort criterion;
- The terraces and balconies would be expected to be within the recommended **walking** comfort criterion.
- The gust wings are expected to fulfil **safety** criterion.

As a general statement, educating occupants about wind conditions at open terrace/balcony areas during high-wind events and fixing loose, lightweight furniture on the terrace is highly recommended.

The assessments provided in this report have been made based on experience of similar situations in Melbourne and around the world. As with any opinion, it is possible that an assessment of wind effects based on experience and without experimental validation may not account for all complex flow scenarios in the vicinity.

*This Report has been Prepared*

*For*

*GrayKinnane Pty Ltd*

*By*

*VIPAC ENGINEERS & SCIENTISTS PTY LTD.*

## Appendix A Environmental Wind Effects

### Atmospheric Boundary Layer

As wind flows over the earth it encounters various roughness elements and terrain such as water, forests, houses and buildings. To varying degrees, these elements reduce the mean wind speed at low elevations and increase air turbulence. The wind above these obstructions travels with unattenuated velocity, driven by atmospheric pressure gradients. The resultant increase in wind speed with height above ground is known as a wind velocity profile. When this wind profile encounters a tall building, some of the fast-moving wind at upper elevations is diverted down to ground level resulting in local adverse wind effects.

The terminology used to describe the wind flow patterns around the proposed development is based on the aerodynamic mechanism, direction and nature of the wind flow.

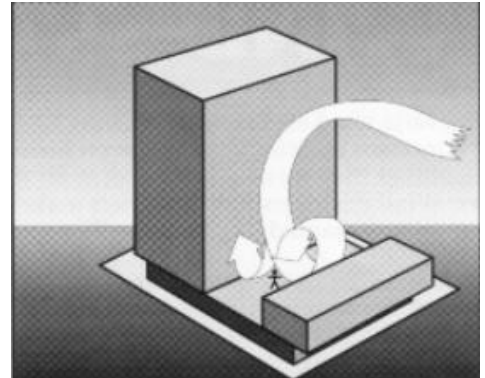
**Downwash** – refers to a flow of air down the exposed face of a tower. A tall tower can deflect a fast-moving wind at higher elevations downwards.

**Corner Accelerations** – when wind flows around the corner of a building it tends to accelerate in a similar manner to airflow over the top of an aeroplane wing.

**Flow separation** – when wind flowing along a surface suddenly detaches from that surface and the resultant energy dissipation produces increased turbulence in the flow. Flow separation at a building corner or at a solid screen can result in gusty conditions.

**Flow channelling** – the well-known “street canyon” effect occurs when a large volume of air is funnelled through a constricted pathway. To maintain flow continuity the wind must speed up as it passes through the constriction. Examples of this might occur between two towers, in a narrowing street or under a bridge.

**Direct Exposure** – a location with little upstream shielding for a wind direction of interest. The location will be exposed to the unabated mean wind and gust velocity. Piers and open water frontage may have such exposure.



## Appendix B      References

- [1]      *Structural Design Actions, Part 2: Wind Actions*, Australian/New Zealand Standard 1170.2:2011
- [2]      *Wind Effects on Structures* E. Simiu, R Scanlan, Publisher: Wiley-Interscience
- [3]      *Architectural Aerodynamics* R. Aynsley, W. Melbourne, B. Vickery, Publisher: Applied Science Publishers
- [4]      *The Aerodynamic Characteristics of Windbreaks, Resulting in Empirical Design Rules* J. Gandemer, Publisher: *Journal of Wind Engineering and Industrial Aerodynamics*
- [6]      *Wind Protection by Model Fences in a simulated Atmospheric Boundary Layer* J.K. Rain, D.C. Stevenson, Publisher: *Journal of Industrial Aerodynamics, 2*
- [7]      *Criteria for Environmental Wind Conditions* W.H Melbourne, Publisher: *Journal of Wind Engineering and Industrial Aerodynamics*
- [8]      *Wind Design Guide* J. Bennett Publisher: *BBSC 433 – Architectural Aerodynamics*
- [9]      *Central City Built Form Review: Wind Assessments*, Global Wind Technology Services
- [10]     *Wind Guidelines for Planning Applicants* H. Fricke Publisher: *Moonee Valley City Council*

## Appendix C Drawings List

Drawings Received: **Dec, 2025**

### TOWN PLANNING

TP-0000	TITLE SHEET
TP-0001	DEVELOPMENT SUMMARY
TP-0002	COMPLIANCE WITH PLANNING REQUIREMENTS
TP-0003	COMPLIANCE WITH PLANNING REQUIREMENTS
TP-0004	COMPLIANCE WITH PLANNING REQUIREMENTS
TP-0005	MATERIAL SCHEDULE
TP-0102	PROPOSED SITE PLAN
TP-1001	BASEMENT LEVEL 3
TP-1002	BASEMENT LEVEL 2
TP-1003	BASEMENT LEVEL 1
TP-1004	GROUND LEVEL
TP-1005	LEVEL 1
TP-1006	LEVELS 2-5
TP-1010	LEVEL 6
TP-1011	LEVEL 7
TP-1012	ROOF
TP-2001	ELEVATIONS - NORTH
TP-2002	ELEVATIONS - EAST
TP-2003	ELEVATIONS - SOUTH
TP-2004	ELEVATIONS - WEST
TP-3001	SECTION A
TP-3002	SECTION B
TP-3003	SECTION C, D AND E
TP-3004	SECTIONS OVERLOOKING
TP-4001	FACADE DETAILS
TP-5001	SHADOW DIAGRAMS
TP-5002	SHADOW DIAGRAMS
TP-5003	SHADOW DIAGRAMS
TP-5004	SHADOW DIAGRAMS
TP-5005	SHADOW DIAGRAMS
TP-5006	SHADOW DIAGRAMS
TP-5007	SHADOW DIAGRAMS
TP-5011	SHADOW DIAGRAMS - PROPOSED
TP-5012	SHADOW DIAGRAMS - PROPOSED
TP-5013	SHADOW DIAGRAMS - PROPOSED
TP-5014	SHADOW DIAGRAMS - PROPOSED
TP-5015	SHADOW DIAGRAMS - PROPOSED
TP-5016	SHADOW DIAGRAMS - PROPOSED
TP-5017	SHADOW DIAGRAMS - PROPOSED
TP-8001	APARTMENT DESIGN GUIDELINE ANALYSIS GROUND LEVEL
TP-8002	APARTMENT DESIGN GUIDELINE ANALYSIS LEVEL 1
TP-8003	APARTMENT DESIGN GUIDELINE ANALYSIS LEVELS 2-5
TP-8004	APARTMENT DESIGN GUIDELINE ANALYSIS LEVEL 6
TP-8005	APARTMENT DESIGN GUIDELINE ANALYSIS LEVEL 7