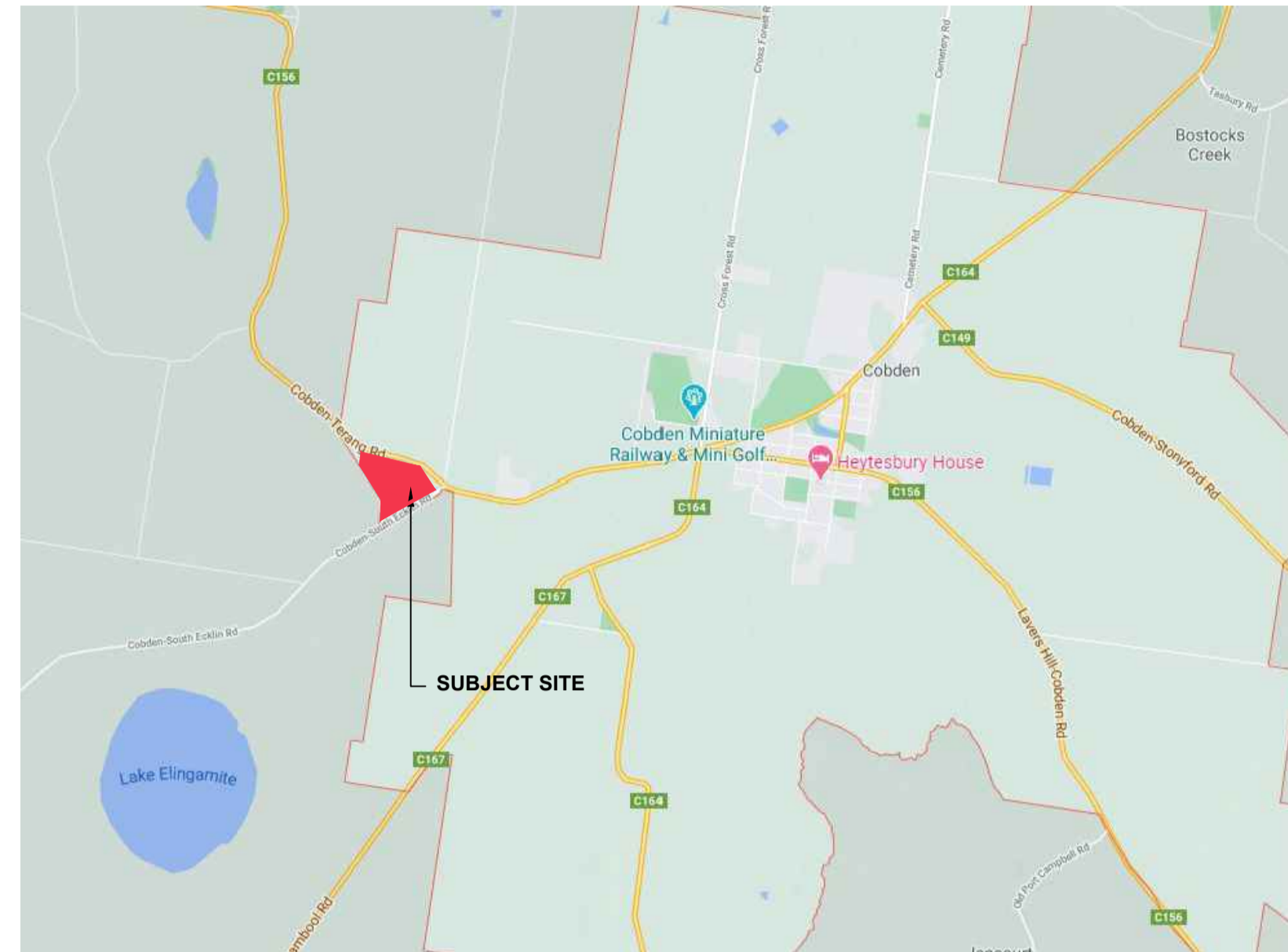


COBDEN SOLAR FARM LANDSCAPE BUFFER PLANTING

181 COBDEN-TERANG ROAD, COBDEN, VICTORIA

This copied document to be made available for the sole purpose of enabling its consideration and review as part of a planning process under the Planning and Environment Act 1987. The document must not be used for any purpose which may breach any copyright.



1 LOCATION PLAN
SITE LOCATION NTS

STANDARD NOTES

- SET OUT AND DIMENSIONS.** WRITTEN DIMENSIONS SHALL TAKE PRECEDENCE OVER SCALE. CHECK ALL DRAWING SCALES IN CONJUNCTION WITH DRAWING SIZE. DRAWINGS MUST BE READ IN ASSOCIATION WITH OTHER CONSTRUCTION DRAWINGS.
- SERVICES AND SITE ASSETS.** THE CONTRACTOR SHALL VERIFY THE NATURE AND LOCATION OF THE 'AS BUILT' OF ALL EXISTING SERVICES AND RETAINED SITE ASSETS AFFECTED BY THEIR WORKS. SERVICES SHOWN ARE INDICATIVE ONLY.
- REFERENCE.** THE CONTRACTOR SHALL REFER TO ALL DRAWINGS PRIOR TO AND DURING THE WORKS.
- DISCREPANCIES.** NOTIFY SUPERINTENDENT OF ANY SUSPECTED OR KNOWN DISCREPANCIES OR ERRORS PRIOR TO ORDERING OF AFFECTED MATERIALS AND OR CONSTRUCTION OF AFFECTED WORKS.
- RELEVANT STANDARDS.** THE CONTRACTOR SHALL UNDERTAKE ALL PRICING AND WORKS IN ACCORDANCE WITH CURRENT INDUSTRY BEST PRACTICE AND ALL RELEVANT AUSTRALIAN STANDARDS.
- EXISTING TREES**
EXISTING TREES TO BE PROTECTED AND RETAINED DURING CONSTRUCTION. REFER AS4970 PROTECTION OF TREES ON DEVELOPMENT SITES. THE CONTRACTOR SHALL USE THE FORMULA BASED ON HEIGHT AND DBH AND SUPPLY AND ERECT THE TREE PROTECTION ZONE FOR EACH TREE. NO EARTHWORKS, LEVEL CHANGES OR STOCKPILING IS TO OCCUR WITHIN THE TREE PROTECTION ZONE.
- FALLS.** ALL AREAS ARE TO BE GRADED EVENLY TO ENSURE POSITIVE DRAINAGE. PONDING IS UNACCEPTABLE.
- BUFFER PLANTING AREA PREPARATION.** APPLY APPROPRIATE HERBICIDE TO REMOVE WEEDS AND PASTURE GRASS. FOR ALL BUFFER PLANTING TYPES EXCEPT TYPE 2, CULTIVATE ON SITE TOPSOIL TO 200mm DEPTH WITH SOIL AMELIORATION ADDITIVES. SUPPLY AND INSTALL 100mm COMPACTED DEPTH OF APPROVED MULCH. BUFFER PLANTING TYPE 2 SHALL HAVE INDIVIDUAL HOLES FOR EACH SHRUB / TREE.
- CLEARANCE TO ROADWAYS**
ENSURE THAT ALL PLANTING HAS A CLEARANCE OF MINIMUM 3.0METRES TO ALL ROADS.



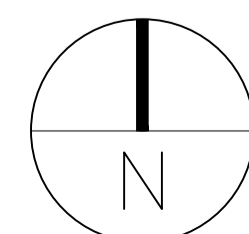
2 LANDSCAPE PLAN
GENERAL ARRANGEMENT OF BUFFER PLANTING 1:2000@A1

LEGEND

- BOUNDARY / EXTENT OF WORKS
- LANDSCAPE BUFFER PLANTING
 - BUFFER PLANTING TYPE 1 5.0 metres deep
 - BUFFER PLANTING TYPE 2 5.0 metres deep near existing trees
- SOLAR FARM INFRASTRUCTURE
 - ROADS
 - PHOTOVOLTAIC ARRAYS
 - SECURITY FENCING

ADVERTISED PLAN

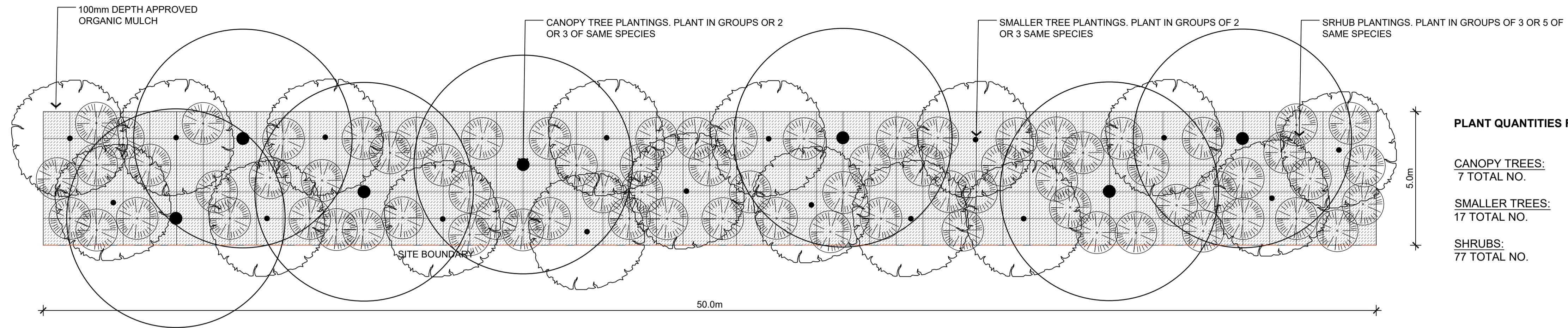
ISSUE	DATE	COMMENT
A	19/10/2020	Preliminary. Client review
B	12/11/2020	COUNCIL SUBMISSION
C	06/08/2021	Revised extent of buffer planting



PO Box 1198 Albury NSW 2640
M 0411 811308
E fiona@fsla.com.au
www.fsla.com.au
ABN 68 437 343 209

© 2020 Copyright. Copyright of designs is retained by FSLA. Written approval is required for reproduction.

Project: COBDEN SOLAR FARM		Revision: C
Address: 181 COBDEN-TERANG ROAD, COBDEN, VICTORIA		Dwg No: 20025 L01
Date: 19 OCTOBER 2020	Issue: COUNCIL SUBMISSION	



PLANT QUANTITIES FOR 250sqm

CANOPY TREES:
7 TOTAL NO.

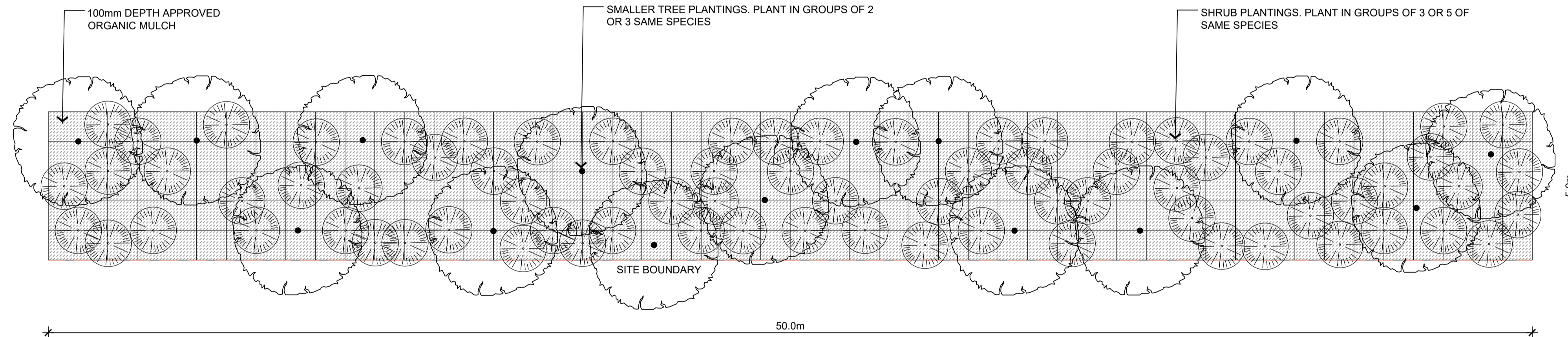
SMALLER TREES:
17 TOTAL NO.

SHRUBS:
77 TOTAL NO.

NOTE:
GRID LINES ARE SHOWN AT 1.0m SPACING
TO ASSIST WITH SET-OUT OF ALL PLANTS.

1 TYPICAL PLANTING PLAN - 50m TRANSECT
- BUFFER PLANTING TYPE 1 1:100@A1

This copied document to be made available for the sole purpose of enabling its consideration and review as part of a planning process under the Planning and Environment Act 1987. The document must not be used for any purpose which may breach any copyright



PLANT QUANTITIES FOR 250sqm

SMALLER TREES:
15 TOTAL NO.

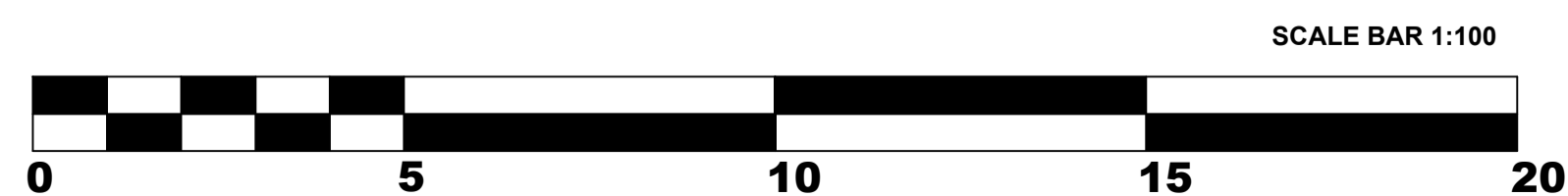
SHRUBS:
77 TOTAL NO.

NOTE:
GRID LINES ARE SHOWN AT 1.0m SPACING
TO ASSIST WITH SET-OUT OF ALL PLANTS.

2 TYPICAL PLANTING PLAN - 50m TRANSECT
- BUFFER PLANTING TYPE 2 1:100@A1

ADVERTISED PLAN

ISSUE	DATE	COMMENT
A	19/10/2020	Preliminary. Client review
B	12/11/2020	COUNCIL SUBMISSION
C	06/08/2021	Revised extent of buffer planting

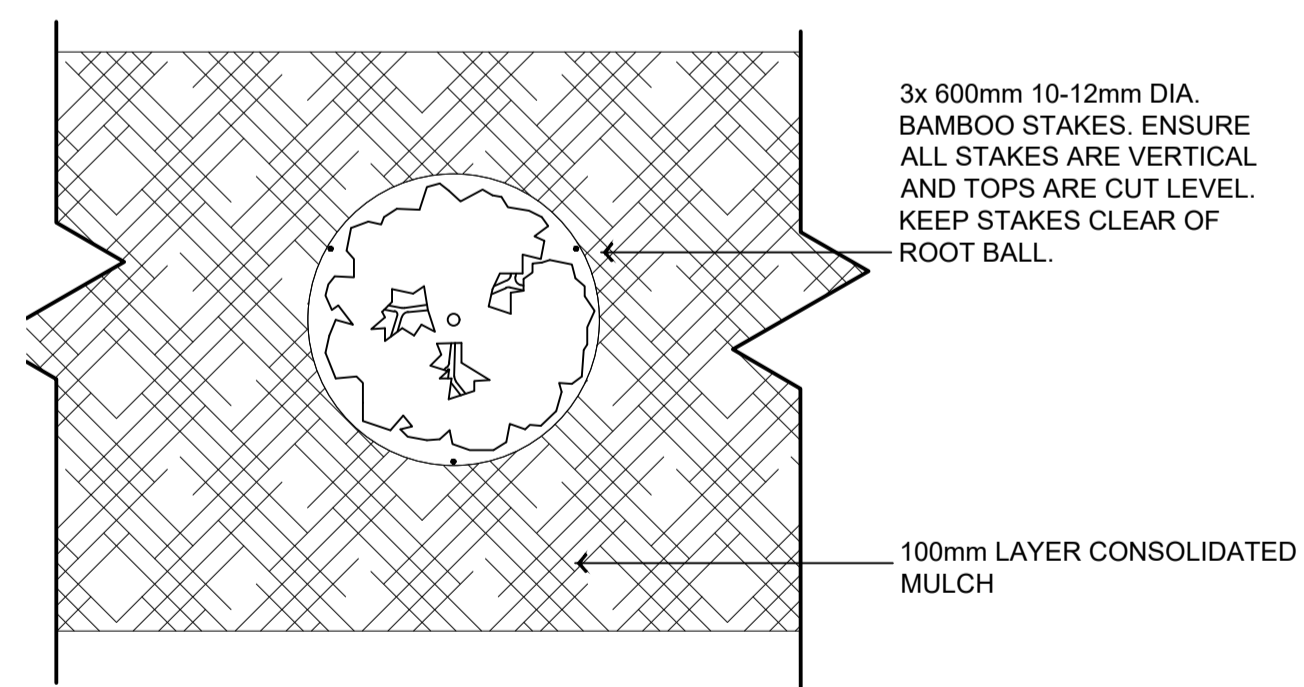


PO Box 1198 Albury NSW 2640
M 0411 811308
E fiona@fsla.com.au
www.fsla.com.au
ABN 68 437 343 209

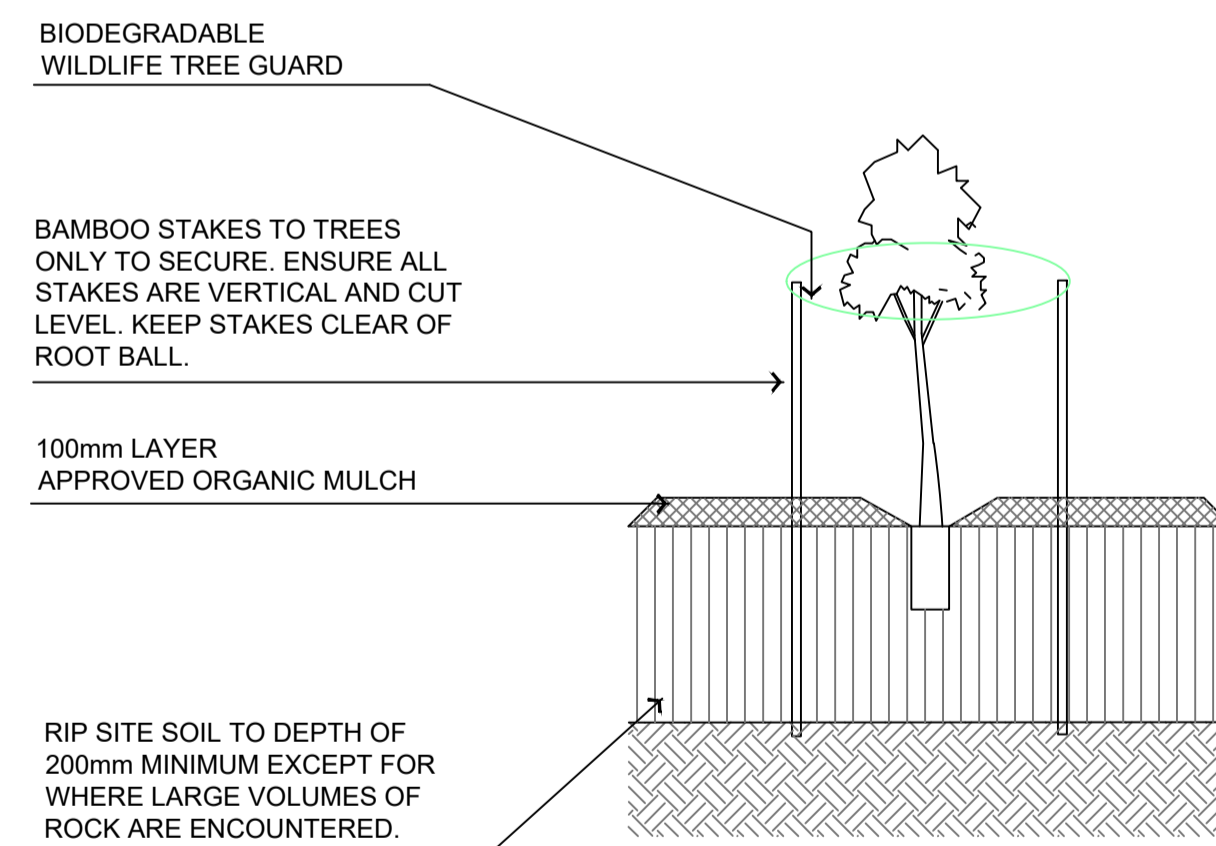
Project: COBDEN SOLAR FARM		Revision: C
Address: 181 COBDEN-TERANG ROAD, COBDEN, VICTORIA		Dwg No: 20025 L02
Drawing Title: TYPICAL BUFFER PLANTING PLANS	Date: 19 OCTOBER 2020	Issue: COUNCIL SUBMISSION

This copied document to be made available for the sole purpose of enabling its consideration and review as part of a planning process under the Planning and Environment Act 1987. The document must not be used for any purpose which may breach any copyright.

ADVERTISED PLAN



1 TYPICAL DETAIL PLAN
TUBESTOCK PLANTING WITH GUARD 1:20@A1



2 TYPICAL DETAIL
TUBESTOCK PLANTING WITH GUARD 1:20@A1

TYPICAL PLANT SCHEDULE			
Botanical Name	Common Name	Installation Size	% of mix
CANOPY TREES			
<i>Acacia melanoxylon</i>	Blackwood	Tubestock	25%
<i>Eucalyptus camaldulensis</i>	River Red Gum	Tubestock	10%
<i>Eucalyptus leucoxylon</i>	Yellow Gum	Tubestock	25%
<i>Eucalyptus obliqua</i>	Messmate Stringybark	Tubestock	20%
<i>Eucalyptus ovata</i>	Swamp Gum	Tubestock	20%
			100%
SMALLER TREES			
<i>Acacia dealbata</i>	Silver Wattle	Tubestock	15%
<i>Acacia mearnsii</i>	Black Wattle	Tubestock	15%
<i>Acacia pycnantha</i>	Golden Wattle	Tubestock	20%
<i>Allocasuarina verticillata</i>	Red Box	Tubestock	25%
<i>Banksia marginata</i>	Silver Banksia	Tubestock	25%
			100%
SHRUBS			
<i>Acacia paradoxa</i>	Hedge Wattle	Tubestock	20%
<i>Acacia stricta</i>	Hop Wattle	Tubestock	10%
<i>Acacia verticillata</i>	Prickly Moses	Tubestock	20%
<i>Bursaria spinosa</i>	Sweet Bursaria	Tubestock	25%
<i>Cassinia aculeata</i>	Dogwood	Tubestock	25%
			100%

ISSUE	DATE	COMMENT
A	19/10/2020	Preliminary. Client review
B	12/11/2020	COUNCIL SUBMISSION
C	06/08/2021	Revised extent of buffer planting



PO Box 1198 Albury NSW 2640
M 0411 811308
E fiona@fsla.com.au
www.fsla.com.au
ABN 68 437 343 209

Project: COBDEN SOLAR FARM		Revision: C
Address: 181 COBDEN-TERANG ROAD, COBDEN, VICTORIA		Dwg No: 20025 L03
Drawing Title: PLANTING DETAILS AND PLANT SCHEDULE	Date: 19 OCTOBER 2020	Issue: COUNCIL SUBMISSION