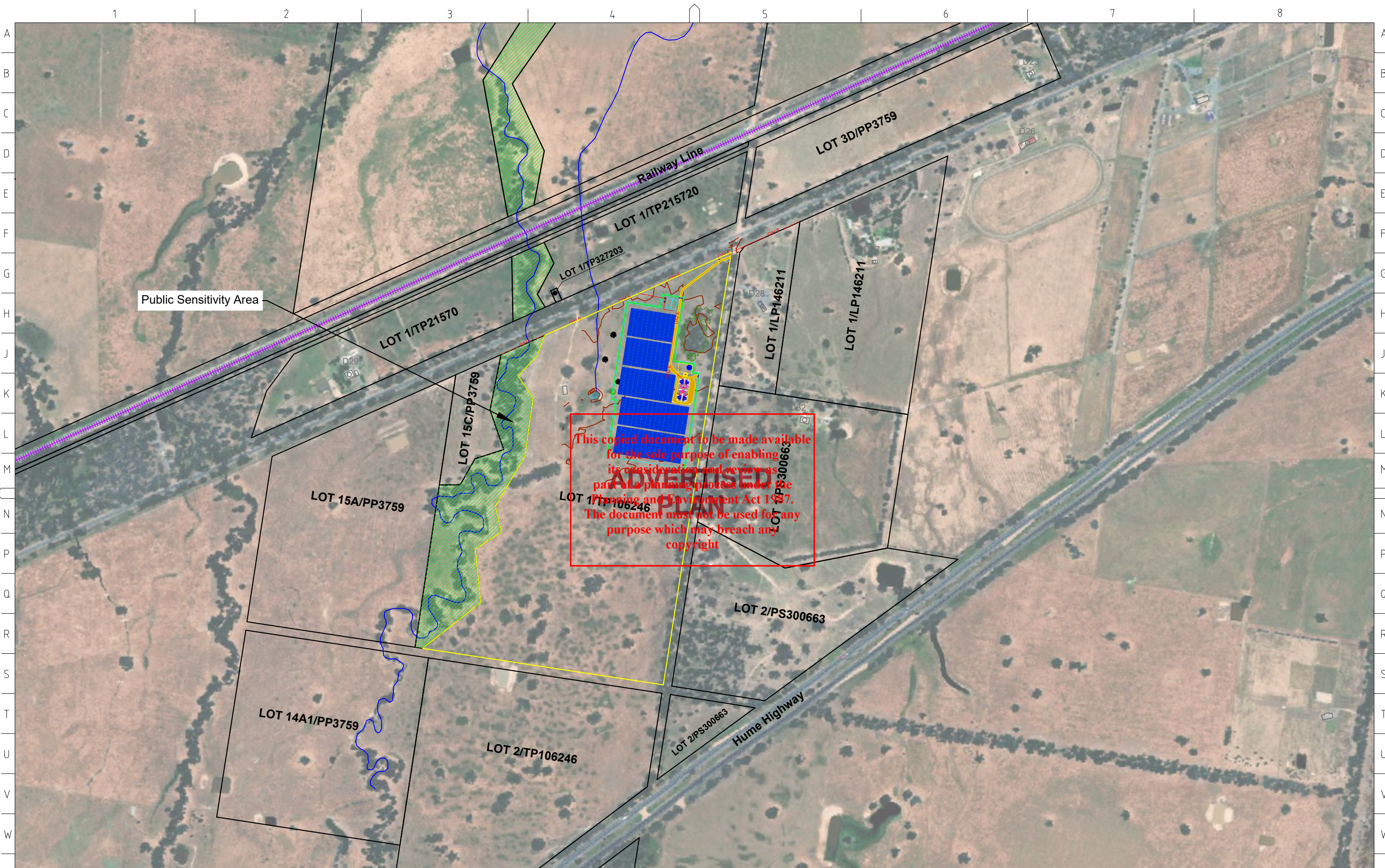


Rev.	DATE	BY	CHK.	REVISION NOTES
A07	16/07/24	RC	SY	Development footprint change and minor ammendments

PROPERTY OF BIRDWOOD ENERGY PTY LTD, ABN 18 658 194 177
 AND/OR ITS RELATED BODIES CORPORATE AS DEFINED IN THE CORPORATIONS
 ACT ("BIRDWOOD ENERGY") - ALL RIGHTS, TITLE AND INTERESTS
 RESERVED. STRICTLY NO USE, COPYING OR REPRODUCTION PERMITTED
 WITHOUT WRITTEN PERMISSION FROM BIRDWOOD ENERGY

birdwood energy
 Level 18, 1 Nicholson St
 VIC 3001, Australia
 East Melbourne
<https://www.birdwoodenergy.com/>

Scale 1:30000	SHEET 1 OF 1	A3
BA2 - Baddaginnie Solar Farm Location View		
BA2-SF-DWG-001	REV A07	

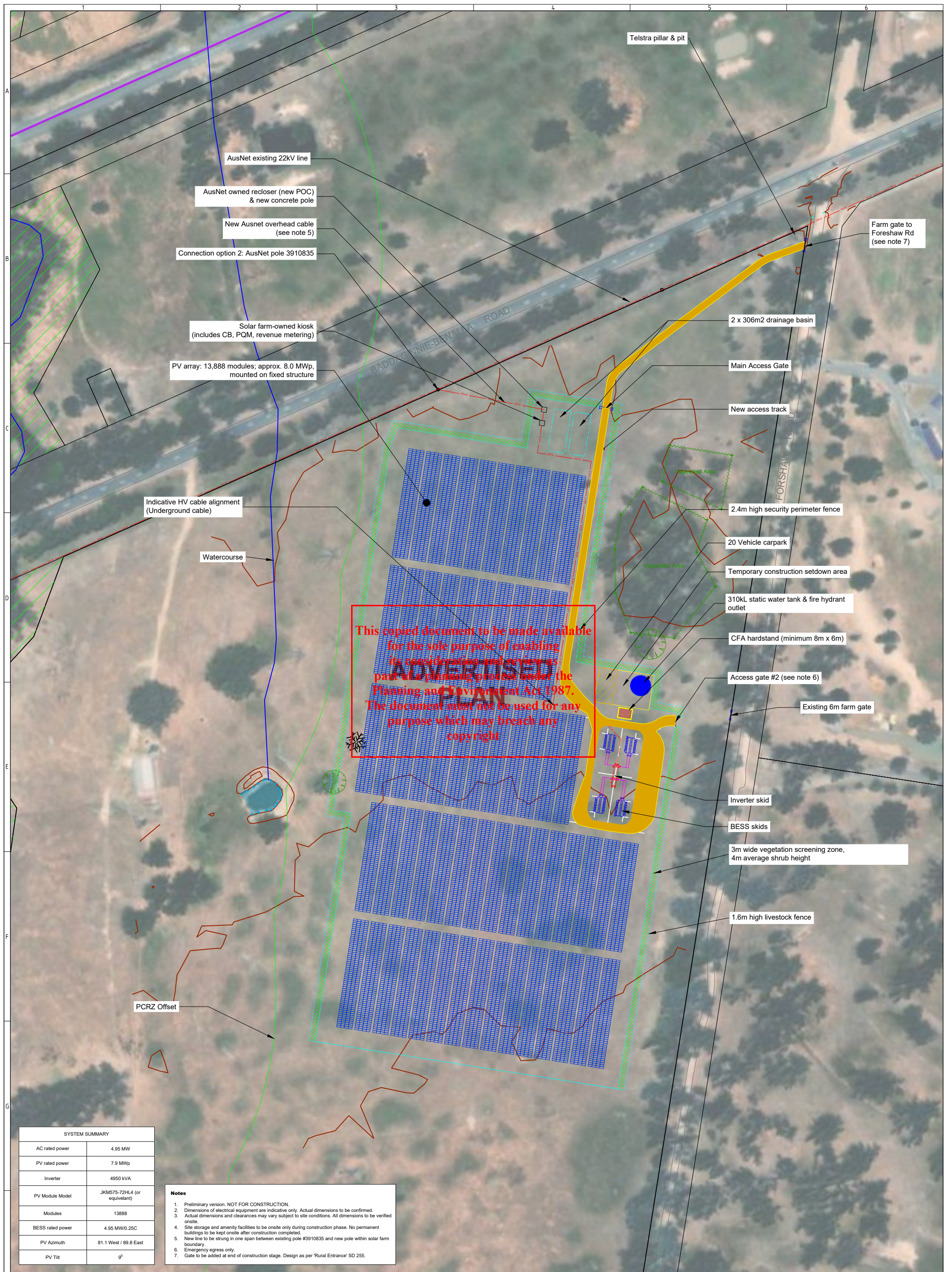


Rev.	DATE	BY	CHK.	REVISION NOTES
A07	16/07/24	RC	SY	Development footprint change and minor ammendments

PROPERTY OF BIRDWOOD ENERGY PTY LTD, ABN 18 658 194 177 AND/OR ITS RELATED BODIES CORPORATE AS DEFINED IN THE CORPORATIONS ACT ("BIRDWOOD ENERGY") - ALL RIGHTS, TITLE AND INTERESTS RESERVED. STRICTLY NO USE, COPYING OR REPRODUCTION PERMITTED WITHOUT WRITTEN PERMISSION FROM BIRDWOOD ENERGY

birdwood energy
 Level 18, 1 Nicholson St
 VIC 3001, Australia
 East Melbourne
<https://www.birdwoodenergy.com/>

Scale 1:8000	SHEET 2 OF 5	A3
BA2 – Baddaginnie Solar Farm General Arrangement Overview		
BA2-SF-DWG-001	REV A07	



SYSTEM SUMMARY	
AC rated power	4.95 MW
PV rated power	7.9 MWp
Inverter	4950 kVA
PV Module Model	JKM575-72HL4 (or equivalent)
Modules	13888
BESS rated power	4.95 MW/0.25C
PV Azimuth	81.1 West / 89.8 East
PV Tilt	g°

- Notes**
- Preliminary version. NOT FOR CONSTRUCTION.
 - Dimensions of electrical equipment are indicative only. Actual dimensions to be confirmed.
 - Actual dimensions and clearances may vary subject to site conditions. All dimensions to be verified onsite.
 - Site storage and amenity facilities to be onsite only during construction phase. No permanent buildings to be kept onsite after construction completed.
 - New line to be strung in one span between existing pole #3910835 and new pole within solar farm boundary.
 - Emergency egress only.
 - Gate to be added at end of construction stage. Design as per 'Rural Entrance' SD 255.

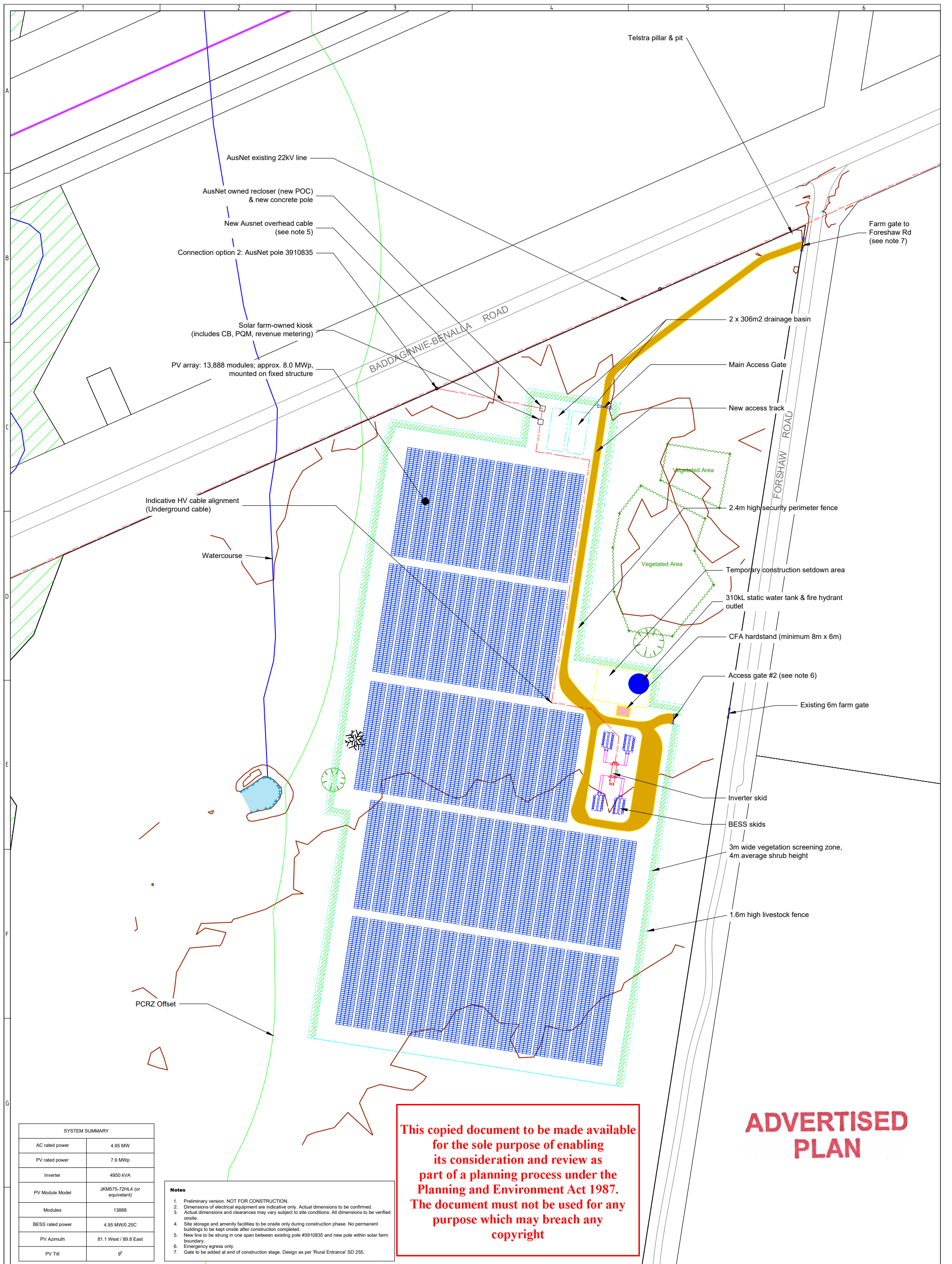
Legend	
	22kV Overhead Cable
	22kV Underground Cable
	Security Fence
	Livestock Fence
	Tree
	Dead Tree
	Gate
	Vegetation Drip Line
	Watercourse
	Major Contour

No.	DATE	BY	CHK.	REVISION NOTES
A07	16/07/24	RC	AA	Development footprint change and minor amendments
A06	12/05/24	RC	AA	Adjustments based on new veg screening plan
A05	06/05/24	RC	AA	Adjustment to perimeter fence
A04	22/11/23	RC	AA	Added drainage basins & veg screening
A03	16/08/23	RC	AA	Resized SMS blocks
A02	17/07/23	RC	AA	Preliminary version

PROPERTY OF BIRDWOOD ENERGY PTY LTD; ABN 18 658 194 177
 AND/OR ITS RELATED BODIES CORPORATE AS DEFINED IN THE CORPORATIONS
 ACT ("BIRDWOOD ENERGY") - ALL RIGHTS, TITLE AND INTERESTS
 RESERVED. STRICTLY NO USE, COPYING OR REPRODUCTION PERMITTED
 WITHOUT WRITTEN PERMISSION FROM BIRDWOOD ENERGY

birdwood energy
 Level 15, 1 Nicholson St
 VIC 3001, Australia
 East Melbourne
<https://www.birdwoodenergy.com/>

Scale 1:2000	SHEET 3 OF 5	A3
BA2-Baddaginnie SF General Arrangement		
BA2-SF-DWG-001	REV A07	



This copied document to be made available for the sole purpose of enabling its consideration and review as part of a planning process under the Planning and Environment Act 1987. The document must not be used for any purpose which may breach any copyright

ADVERTISED PLAN

SYSTEM SUMMARY	
AC rated power	4.95 MW
PV rated power	7.9 MWp
Inverter	4950 kVA
PV Module Model	JKM575-72HL4 (or equivalent)
Modules	13888
BESS rated power	4.95 MW/0.25C
PV Azimuth	81.1 West / 89.8 East
PV Tilt	g°

- Notes**
- Preliminary version. NOT FOR CONSTRUCTION.
 - Dimensions of electrical equipment are indicative only. Actual dimensions to be confirmed.
 - Actual dimensions and clearances may vary subject to site conditions. All dimensions to be verified onsite.
 - Site storage and amenity facilities to be onsite only during construction phase. No permanent buildings to be kept onsite after construction completed.
 - New line to be strung in one span between existing pole #3910835 and new pole within solar farm boundary.
 - Emergency egress only.
 - Gate to be added at end of construction stage. Design as per 'Rural Entrance' SD 255.

Legend

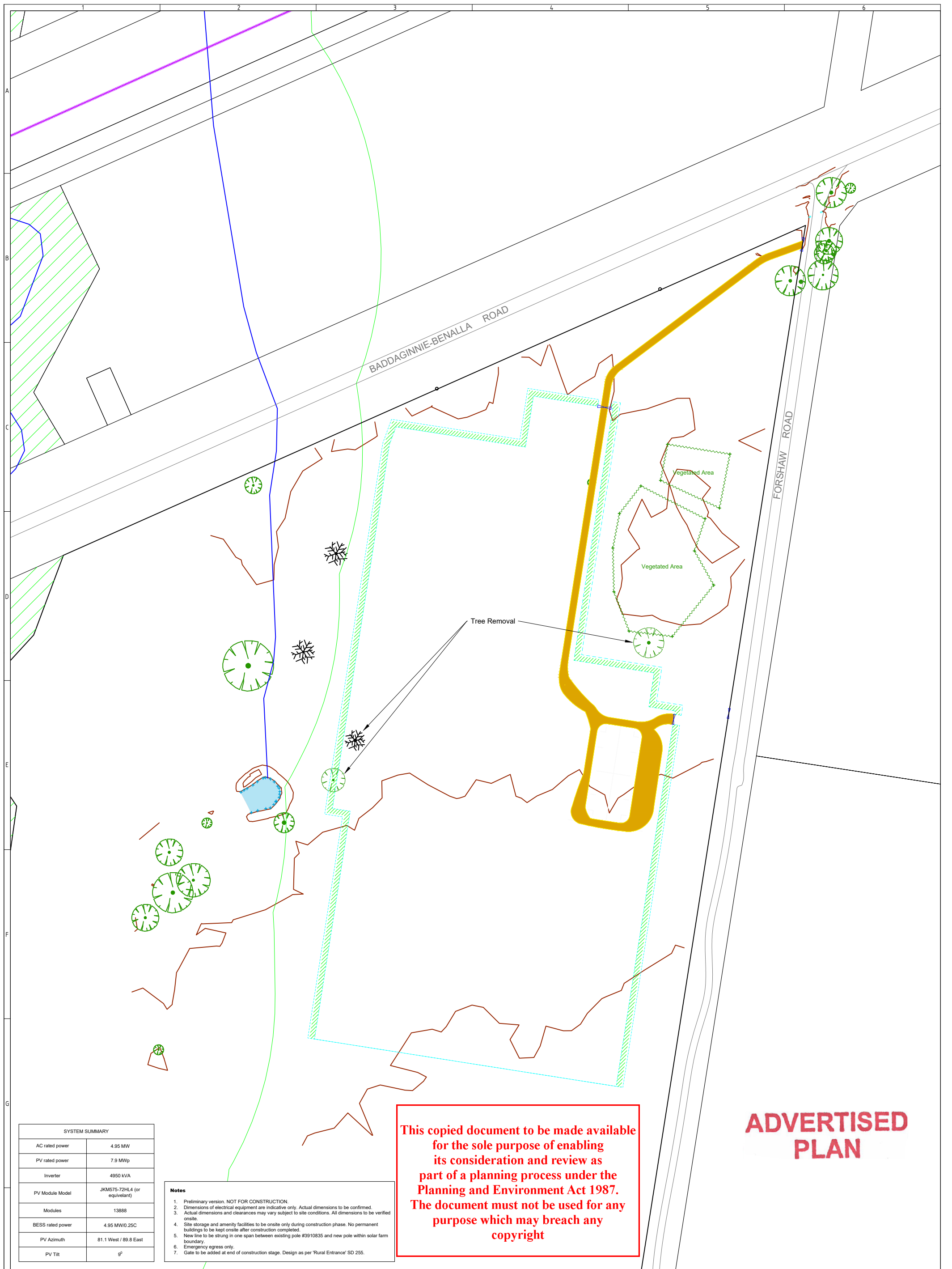
	22kV Overhead Cable		Dead Tree
	22kV Underground Cable		Gate
	Security Fence		Vegetation Drip Line
	Livestock Fence		Watercourse
	Tree		100 Major Contour

No.	DATE	BY	CHK.	REVISION NOTES
A07	16/07/24	RC	AA	Development footprint change and minor amendments
A06	12/05/24	RC	AA	Adjustments based on new veg screening plan
A05	06/05/24	RC	AA	Adjustment to perimeter fence
A04	22/11/23	RC	AA	Added drainage basins & veg screening
A03	16/08/23	RC	AA	Resized SMS blocks
A02	17/07/23	RC	AA	Preliminary version

PROPERTY OF BIRDWOOD ENERGY PTY LTD; ABN 18 658 194 177 AND/OR ITS RELATED BODIES CORPORATE AS DEFINED IN THE CORPORATIONS ACT ("BIRDWOOD ENERGY") - ALL RIGHTS, TITLE AND INTERESTS RESERVED. STRICTLY NO USE, COPYING OR REPRODUCTION PERMITTED WITHOUT WRITTEN PERMISSION FROM BIRDWOOD ENERGY

birdwood energy
 Level 15, 1 Nicholson St
 VIC 3001, Australia
 East Melbourne
<https://www.birdwoodenergy.com/>

Scale 1:2000	SHEET 4 OF 5	A3
BA2-Baddaginnie SF General Arrangement 2		
BA2-SF-DWG-001	REV A07	



This copied document to be made available for the sole purpose of enabling its consideration and review as part of a planning process under the Planning and Environment Act 1987. The document must not be used for any purpose which may breach any copyright

ADVERTISED PLAN

SYSTEM SUMMARY	
AC rated power	4.95 MW
PV rated power	7.9 MWp
Inverter	4950 kVA
PV Module Model	JKM575-72HL4 (or equivalent)
Modules	13888
BESS rated power	4.95 MW/0.25C
PV Azimuth	81.1 West / 89.8 East
PV Tilt	g°

- Notes**
- Preliminary version. NOT FOR CONSTRUCTION.
 - Dimensions of electrical equipment are indicative only. Actual dimensions to be confirmed.
 - Actual dimensions and clearances may vary subject to site conditions. All dimensions to be verified onsite.
 - Site storage and amenity facilities to be onsite only during construction phase. No permanent buildings to be kept onsite after construction completed.
 - New line to be strung in one span between existing pole #3910835 and new pole within solar farm boundary.
 - Emergency egress only.
 - Gate to be added at end of construction stage. Design as per 'Rural Entrance' SD 255.

Legend	
22kV Overhead Cable	Dead Tree
22kV Underground Cable	Gate
Security Fence	Vegetation Drip Line
Railway	Watercourse
Tree	Major Contour

No.	DATE	BY	CHK.	REVISION NOTES
A07	16/07/24	RC	AA	Development footprint change and minor amendments
A06	12/05/24	RC	AA	Adjustments based on new veg screening plan
A05	06/05/24	RC	AA	Adjustment to perimeter fence
A04	22/11/23	RC	AA	Added drainage basins & veg screening
A03	16/08/23	RC	AA	Resized SMS blocks
A02	17/07/23	RC	AA	Preliminary version

PROPERTY OF BIRDWOOD ENERGY PTY LTD; ABN 18 658 194 177
 AND/OR ITS RELATED BODIES CORPORATE AS DEFINED IN THE CORPORATIONS ACT ("BIRDWOOD ENERGY") - ALL RIGHTS, TITLE AND INTERESTS RESERVED. STRICTLY NO USE, COPYING OR REPRODUCTION PERMITTED WITHOUT WRITTEN PERMISSION FROM BIRDWOOD ENERGY

birdwood energy
 Level 15, 1 Nicholson St
 VIC 3001, Australia
 East Melbourne
<https://www.birdwoodenergy.com/>

Scale 1:2000	SHEET 5 OF 5	A3
BA2-Baddaginnie SF Vegetation Plan		
BA2-SF-DWG-001	REV A07	