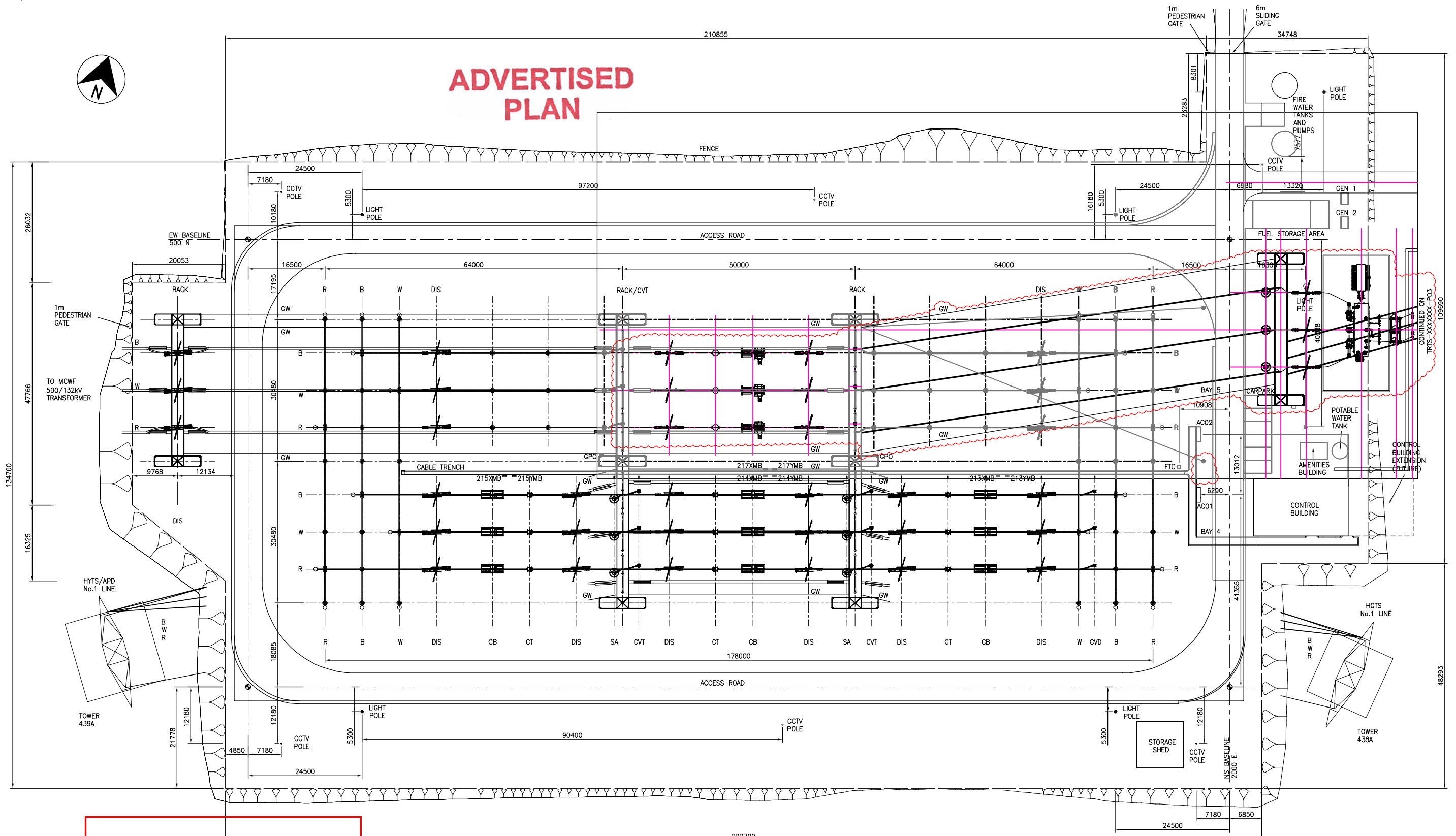
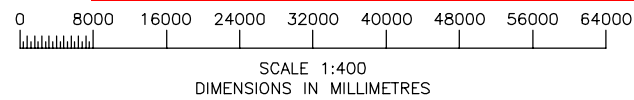


ADVERTISED PLAN



This copied document to be made available for the sole purpose of enabling its consideration and review as part of a planning process under the Planning and Environment Act 1987. The document must not be used for any purpose which may breach any copyright



REFERENCE DRAWINGS	DRAWING No.
500KV SWITCHYARD CONTROL ROOM LAYOUT	T2/603/1
500KV SWITCHYARD CABLE EASEMENT PLAN	T2/603/91
500KV SWITCHYARD EARTHING PLAN	T2/603/90
500KV SWITCHYARD MATERIAL SCHEDULE SHEETS 1&2	T2/603/88/1&2
500KV SWITCHYARD SECTIONS SHEETS 1-4	T2/603/87/1-4
500KV SWITCHYARD PLAN	T2/603/86

REVISION	DATE	REV	DESCRIPTION	BY	CONTRACTOR
18.08.21	4.0		K2 TRANSFORMER & 132KV YARD ADDED (TC-0012062)	WCS	JACOBS
13.7.18	C		REVISED LINE NAMING (TC-0008190)	GLS	JACOBS
22.10.11	B		REVISED TRENCH DETAILS, AC C/O BOARDS, FTC, CCTV AND CB MBs (Z909)	RL	BECA
29.04.11	A		FIRST ISSUE (Z829 & Z909 & ZA33)	RL	BECA

		TARRONE TERMINAL STATION SITE PLAN SHOWING ELECTRICAL LAYOUT	
DRAWN BY G. SMITH	CHECKED BY G. SMITH	ORDERED DATE 25-10-2018	REV 3.1 ISSUED 27/10/2018
Spec No.	Order No.	Legacy No.	T2/603/85
Contractors No.	Drawing No.	TRTS-0161081-001	

[UNCONTROLLED WHEN PRINTED]

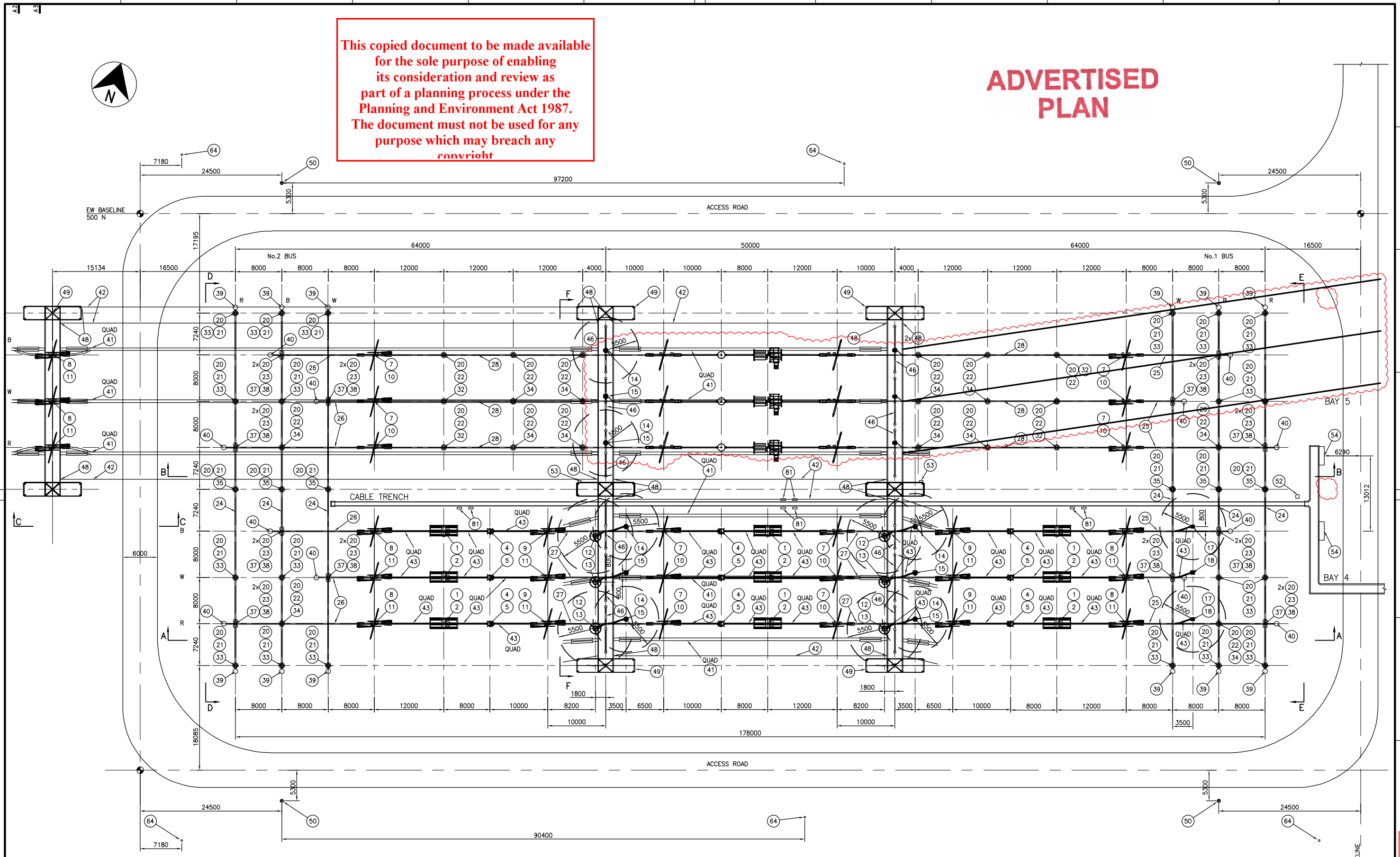
This drawing and any information or descriptive matter set out hereon are the confidential and copyright property of AusNet Services and must not be disclosed, loaned, copied or used for manufacturing, tendering or for any other purpose without written permission © 2019

FOR INFORMATION

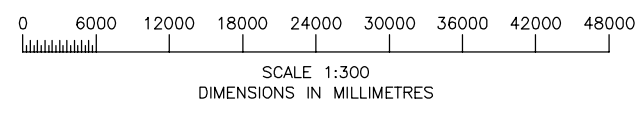
[A1]

This copied document to be made available for the sole purpose of enabling its consideration and review as part of a planning process under the Planning and Environment Act 1987. The document must not be used for any purpose which may breach any copyright

ADVERTISED PLAN



NOTE:
1. REFER TO DRG T2/603/92 FOR 500KV SWITCHYARD LIGHTING ARRANGEMENT



REFERENCE DRAWINGS	DRAWING No.
500KV SWITCHYARD LIGHTING PLAN	T2/603/92
500KV SWITCHYARD CABLE EASEMENT PLAN	T2/603/91
500KV SWITCHYARD EARTHING PLAN	T2/603/90
500KV SWITCHYARD MATERIAL SCHEDULE SHEETS 1&2	T2/603/88/1&2
500KV SWITCHYARD SECTIONS SHEETS 1-4	T2/603/87/1-4
SITE PLAN SHOWING ELECTRICAL LAYOUT	T2/603/85

REVISION	DATE	REV	DESCRIPTION	BY	CONTRACTOR
18.08.21	3.0		K2 TRANSFORMER & 132KV YARD ADDED (TC-0012062)	WCS	JACOBS
20.10.11	B		REVISED TRENCH DETAILS, AC C/O BOARDS, FTC, CCTV AND CB MBs (Z909)	RL	BECA
29.04.11	A		FIRST ISSUE (Z829 & Z909 & ZA33).	RL	BECA

		TARRONE TERMINAL STATION 500kV SWITCHYARD PLAN	
Spec No.	Order No.	Legacy No.	
		T2/603/86	
Contractors No.	Drawing No.	TRTS-0161082-001	
ISSUED	18/11/2111		2.1

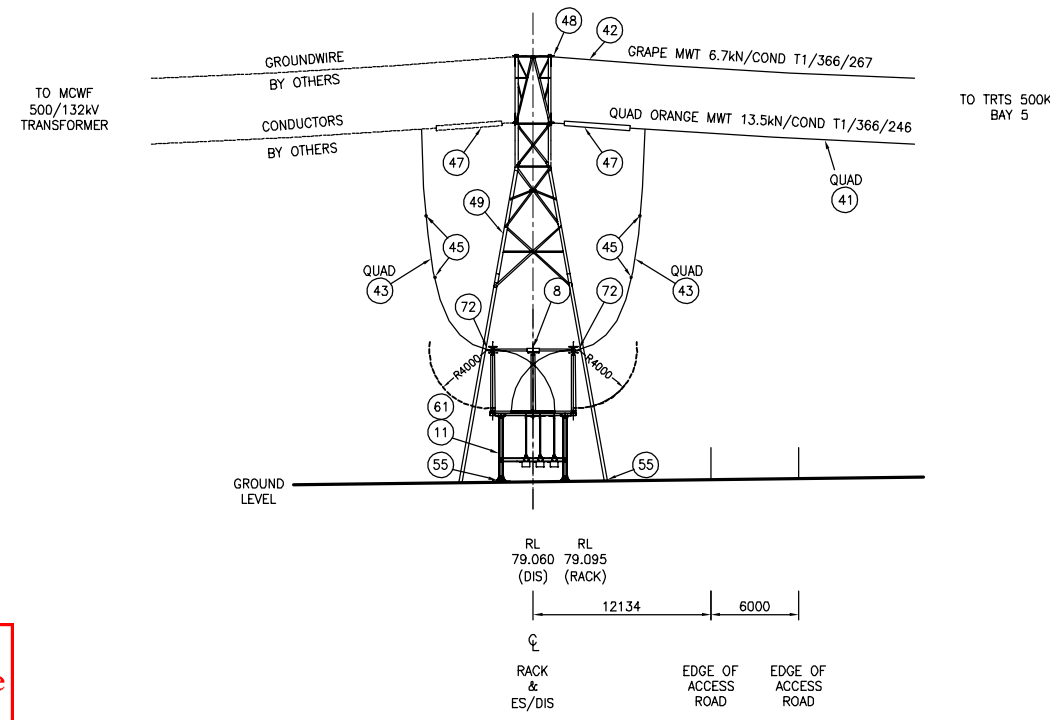
[UNCONTROLLED WHEN PRINTED]

This drawing and any information or descriptive matter set out hereon are the confidential and copyright property of AusNet Services and must not be disclosed, loaned, copied or used for manufacturing, tendering or for any other purpose without written permission © 2019

FOR INFORMATION

[A1]

ELECTRICAL CLEARANCES – POST AUGUST 2021		
SYMBOL	CLEARANCE TYPE	500 kV DIM (mm)
G	GROUND SAFETY	2440
S	SECTION SAFETY	6785
E	PHASE TO EARTH	4100
P	PHASE – PHASE	5000
V	VERTICAL SAFETY	5685
H	HORIZONTAL SAFETY	6245

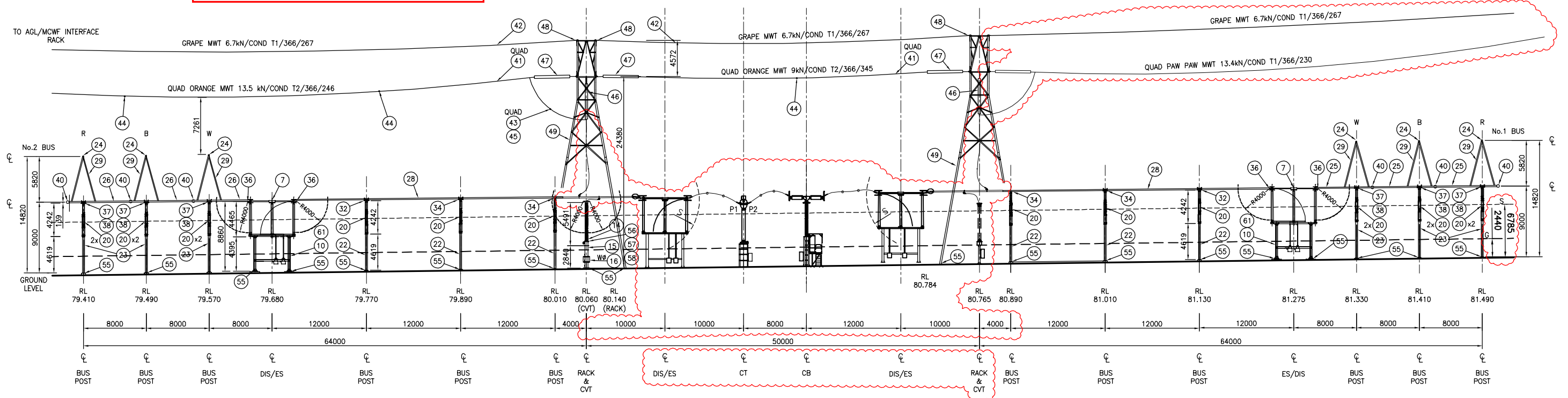


- NOTES:
1. RLs REFER TO BOTTOM OF BASE PLATE UNLESS NOTED OTHERWISE. TOC TYPICALLY 40mm BELOW THIS LEVEL.
 2. EQUIPMENT HEIGHT DIMENSIONS ARE REFERENCED TO BOTTOM OF BASE PLATE.
 3. EARTHING OF CVT AND CVD RECEPTACLES TO BE RUN SEPARATELY FROM MAIN CVT EARTHING.
 4. EARTH RECEPTACLES TO BE POSITIONED WITHIN CORONA RING TO MINIMISE CORONA DISCHARGE.
 5. THE GROUNDWIRE AND CONDUCTOR STRUNG CONNECTIONS INCLUDING THE TERMINATION ASSEMBLIES AND SPACERS FROM THE MCWF 500/132kV TRANSFORMER TO AGL/MCWF INTERFACE RACK TO BE PROVIDED BY OTHERS.
 6. THE NUMBER OF SPACERS REQUIRED FOR INTERPLANT CONNECTION ARE AS FOLLOWS:
 - BUS TO CVT/CVD (ONE OFF PER PHASE – QUAD VENUS)
 - DIS TO STRUNG CONDUCTOR (TWO OFF PER PHASE – QUAD VENUS)
 - V-STRING TO BUS (TWO OFF PER PHASE – QUAD VENUS)
 - V-STRING TO STRUNG CONDUCTOR (ONE OFF PER PHASE – QUAD VENUS)
 - BAY 5 INTER-RACK SPAN (ONE OFF PER PHASE – QUAD ORANGE)
 - AGL/MCWF RACK TO BAY 5 RACK SPAN (TWO OFF PER PHASE – QUAD ORANGE)

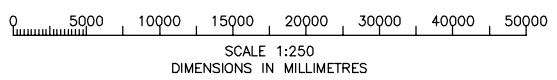
ADVERTISED PLAN

This copied document to be made available for the sole purpose of enabling its consideration and review as part of a planning process under the Planning and Environment Act 1987. The document must not be used for any purpose which may breach any copyright

SECTION C-C



SECTION B-B



REFERENCE DRAWINGS	NO.	DESCRIPTION	DATE	REV	BY	CONTRACTOR	ISSUED
500kV SWITCHYARD CABLE EASEMENT PLAN	T2/603/91		18.08.21	2.0	WCS	JACOBS	ENDORSED MW
500kV SWITCHYARD EARTHING PLAN	T2/603/90		29.04.11	A	RL	BECA	ENDORSED DATE 13-15-2111
500kV SWITCHYARD MATERIAL SCHEDULE SHEETS 1&2	T2/603/88/1&2						
500kV SWITCHYARD SECTIONS SHEETS 1,3,4	T2/603/87/1,3,4						
500kV SWITCHYARD PLAN	T2/603/86						
SITE PLAN SHOWING ELECTRICAL LAYOUT	T2/603/85						

REVISION	DATE	REV	DESCRIPTION
18.08.21	2.0		ISSUED FOR HLD (TC-0012062)
29.04.11	A		FIRST ISSUE (2829 & 2909 & 2A33).

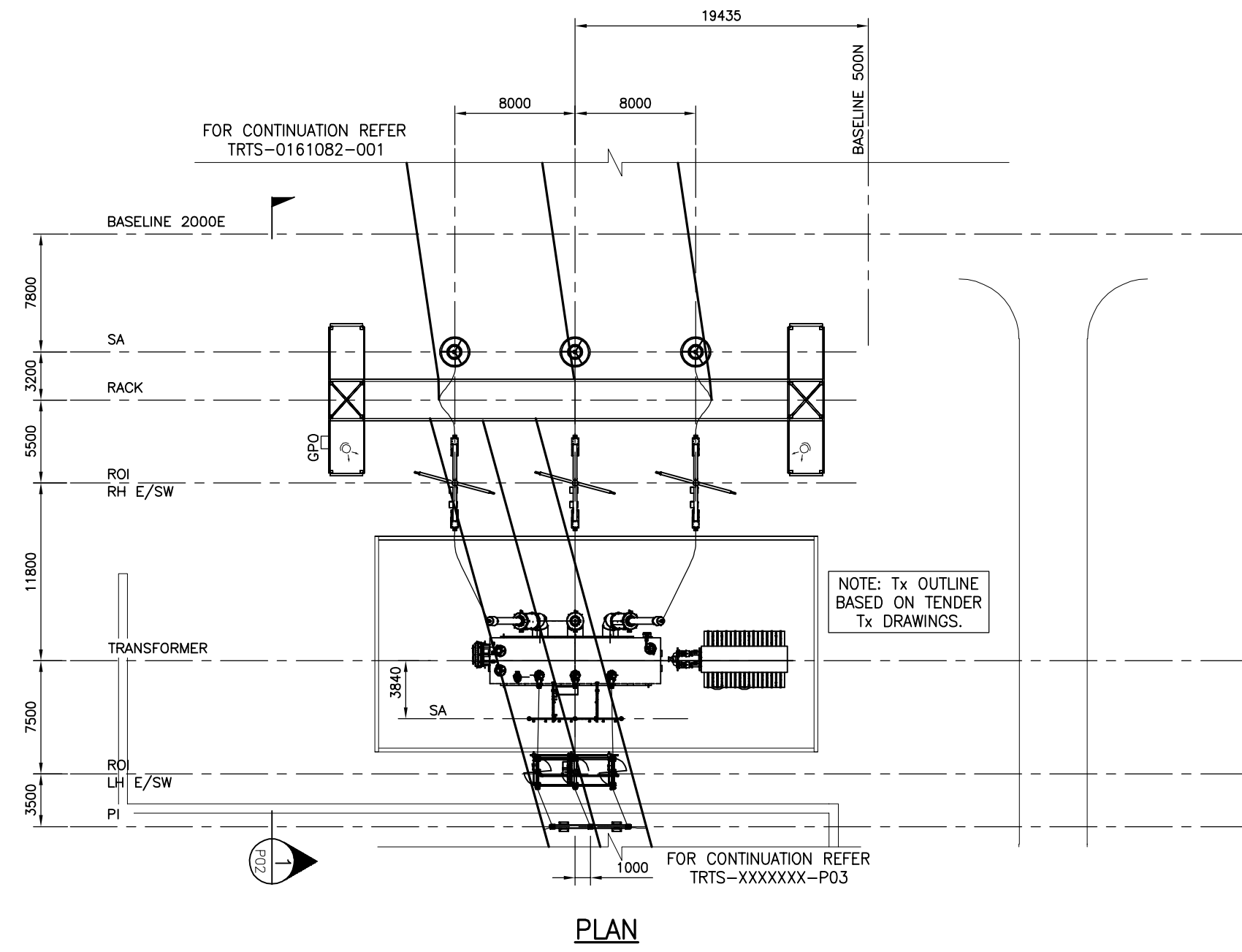
TARRONE TERMINAL STATION 500kV SWITCHYARD SECTIONS BAY 5		Spec No.	Order No.	Legacy No.
DRAWN: AusNet SERVICES				T2/603/87/2
ENDORSED: MW				TRTS-0161083-002
ISSUED: 13/15/2111				

FOR INFORMATION



NOTES:
1. ALL DIMENSIONS ARE IN MILLIMETRES U.N.O.

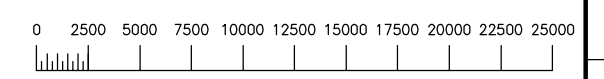
ADVERTISED PLAN



This copied document to be made available for the sole purpose of enabling its consideration and review as part of a planning process under the Planning and Environment Act 1987. The document must not be used for any purpose which may breach any copyright

LEGEND

	FLOOD LIGHTS
	POWER DISTRIBUTION BOARD
	REMOTE OPERATED ISOLATOR
	POST INSULATOR
	SURGE ARRESTER
	EARTH SWITCH



SCALE 1:250
DIMENSIONS IN MILLIMETRES

REFERENCE DRAWINGS	132kV SWITCHYARD - PLAN	TRTS-XXXXXX-P03	REVISION					AusNet services	TARRONE TERMINAL STATION			
	500/132kV SWITCHYARD - K2 TRANSFORMER ELEVATIONS	TRTS-XXXXXX-P02							DRAWN WCS	500/132kV SWITCHYARD		
	500kV SWITCHYARD - MATERIAL SCHEDULE	TRTS-0161084-001 & 002							ENDORSED REV 0.1	K2 TRANSFORMER PLAN		
	500kV SWITCHYARD - PLAN	TRTS-0161082-001							ENDORSED DATE	Spec No.	Order No.	Legacy No.
DRAWING TITLE	DRAWING No.		DATE	REV	DESCRIPTION	BY	CONTRACTOR	ISSUED	Contractors No.	Drawing No.	TRTS-XXXXXX-P01	0.1

[UNCONTROLLED WHEN PRINTED]

This drawing and any information or descriptive matter set out hereon are the confidential and copyright property of AusNet Services and must not be disclosed, loaned, copied or used for manufacturing, tendering or for any other purpose without written permission © 2019

FOR INFORMATION

AusNet Services STD A2

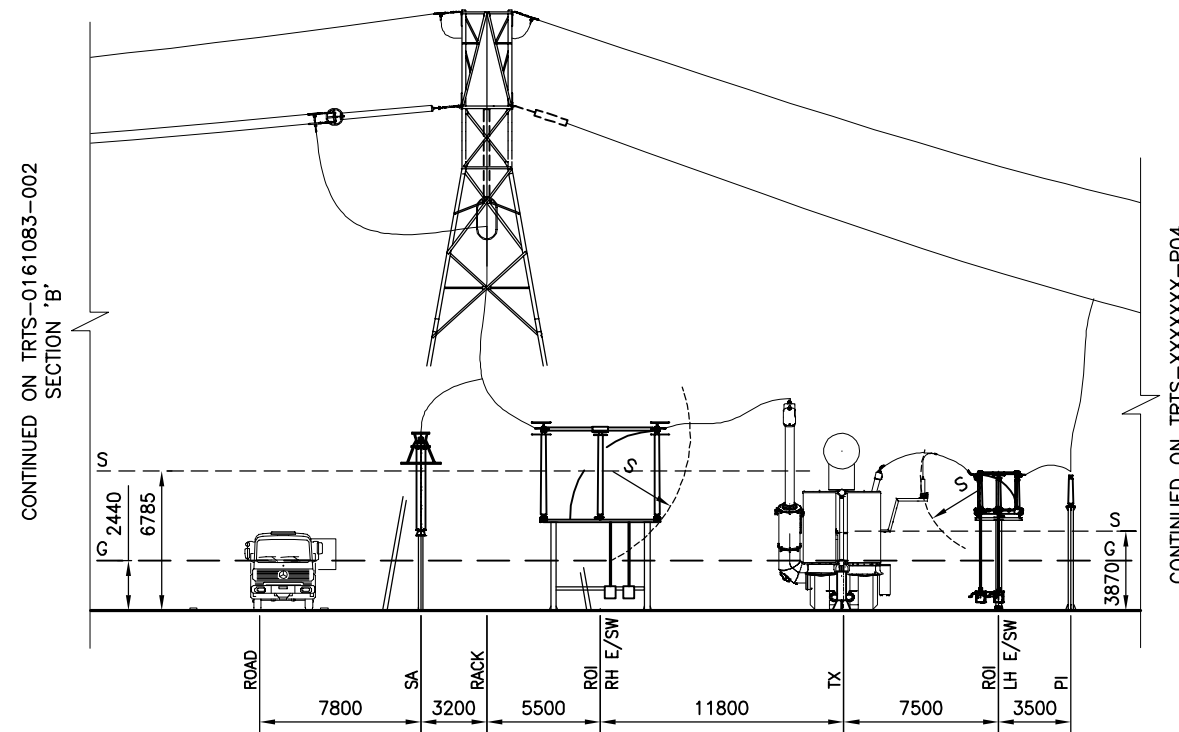
400 X 566mm
A2

[A2]

NOTES:

1. ALL DIMENSIONS ARE IN MILLIMETRES U.N.O.

ADVERTISED PLAN



SECTION 1
SCALE 1: 250 P01

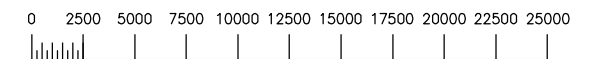
NOTE: Tx OUTLINE
BASED ON TENDER
Tx DRAWINGS.

LEGEND

- ⊙ FLOOD LIGHTS
- P POWER DISTRIBUTION BOARD
- ROI REMOTE OPERATED ISOLATOR
- PI POST INSULATOR
- SA SURGE ARRESTER
- E/SW EARTH SWITCH

This copied document to be made available for the sole purpose of enabling its consideration and review as part of a planning process under the Planning and Environment Act 1987. The document must not be used for any purpose which may breach any copyright

ELECTRICAL CLEARANCES			
SYMBOL	CLEARANCE TYPE	500 kV DIM (mm)	132kV DIM (mm)
G	GROUND SAFETY	2440	2440
S	SECTION SAFETY	6785	3870
E	PHASE TO EARTH	4100	1300
P	PHASE - PHASE	5000	1495
V	VERTICAL SAFETY	5685	2770
H	HORIZONTAL SAFETY	6245	3330



SCALE 1:250
DIMENSIONS IN MILLIMETRES

REFERENCE DRAWINGS	132KV SWITCHYARD - PLAN	TRTS-XXXXXXX-P03	REVISION						TARRONE TERMINAL STATION 500/132kV SWITCHYARD K2 TRANSFORMER ELEVATIONS				
	500/132KV SWITCHYARD - K2 TRANSFORMER PLAN	TRTS-XXXXXXX-P01											
	500KV SWITCHYARD - MATERIAL SCHEDULE	TRTS-0161084-001 & 002											
	500KV SWITCHYARD - PLAN	TRTS-0161082-001											
DRAWING TITLE	DRAWING No.			18.08.21	1.0	FIRST ISSUE (TC-0012062)		WCS	JACOBS	ENDORSED DATE	Spec No.	Order No.	Legacy No.
				DATE	REV	DESCRIPTION		BY	CONTRACTOR	ISSUED	Contractors No.		Drawing No.
													TRTS-XXXXXXX-P02
													0.1

4.00 X 566mm A2

[UNCONTROLLED WHEN PRINTED]

This drawing and any information or descriptive matter set out hereon are the confidential and copyright property of AusNet Services and must not be disclosed, loaned, copied or used for manufacturing, tendering or for any other purpose without written permission © 2019

FOR INFORMATION

[A2]

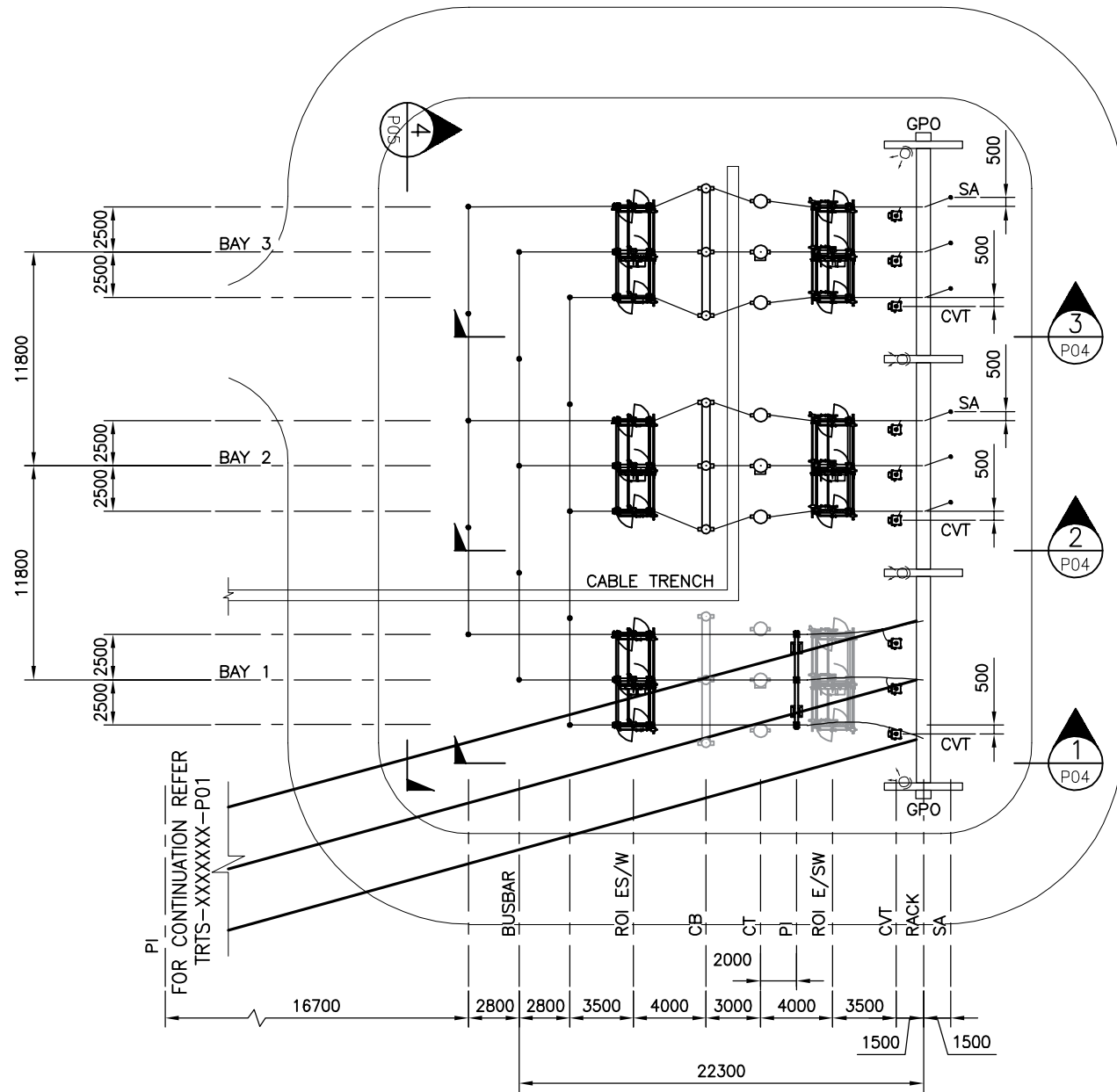


NOTES:

1. ALL DIMENSIONS ARE IN MILLIMETRES U.N.O.

**ADVERTISED
PLAN**

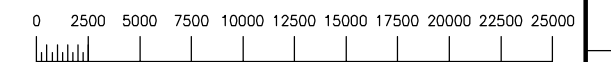
This copied document to be made available for the sole purpose of enabling its consideration and review as part of a planning process under the Planning and Environment Act 1987. The document must not be used for any purpose which may breach any copyright



PLAN

LEGEND

- FLOOD LIGHTS
- GPO GENERAL PURPOSE OUTLET
- ROI REMOTE OPERATED ISOLATOR
- CB CIRCUIT BREAKER
- CVT CAPACITIVE VOLTAGE TRANSFORMER
- CT CURRENT TRANSFORMER
- PI POST INSULATOR
- SA SURGE ARRESTER
- E/SW EARTH SWITCH



SCALE 1:250
DIMENSIONS IN MILLIMETRES

REFERENCE DRAWINGS	500/132kV SWITCHYARD - K2 TRANSFORMER PLAN	TRTS-XXXXXXX-P01	REVISION				AusNet services	TARRONE TERMINAL STATION 132kV SWITCHYARD PLAN			
	500/132kV SWITCHYARD - K2 TRANSFORMER ELEVATIONS	TRTS-XXXXXXX-P02						DRAWN WCS			
	500kV SWITCHYARD - MATERIAL SCHEDULE	TRTS-0161084-001 & 002						ENDORSED REV 0.1			
	500kV SWITCHYARD - PLAN	TRTS-0161082-001						ENDORSED DATE	Spec No.	Order No.	Legacy No.
DRAWING TITLE	DRAWING No.		DATE	REV	DESCRIPTION	BY	CONTRACTOR	ISSUED	Contractors No.	Drawing No.	0.1
18.08.21 1.0 FIRST ISSUE (TC-0012062)						WCS	JACOBS				

4.00 X 566mm
A2

[UNCONTROLLED WHEN PRINTED]

This drawing and any information or descriptive matter set out hereon are the confidential and copyright property of AusNet Services and must not be disclosed, loaned, copied or used for manufacturing, tendering or for any other purpose without written permission © 2019

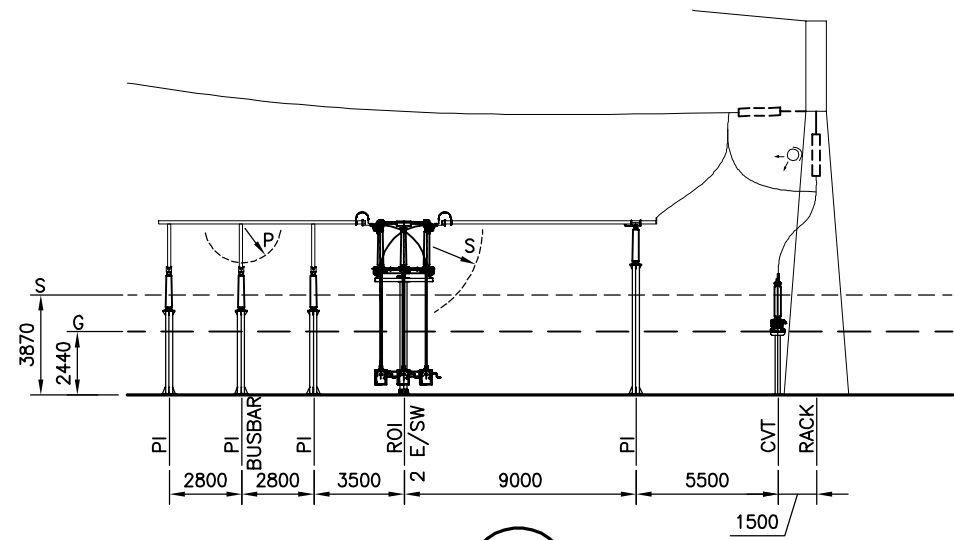
FOR INFORMATION

[A2]

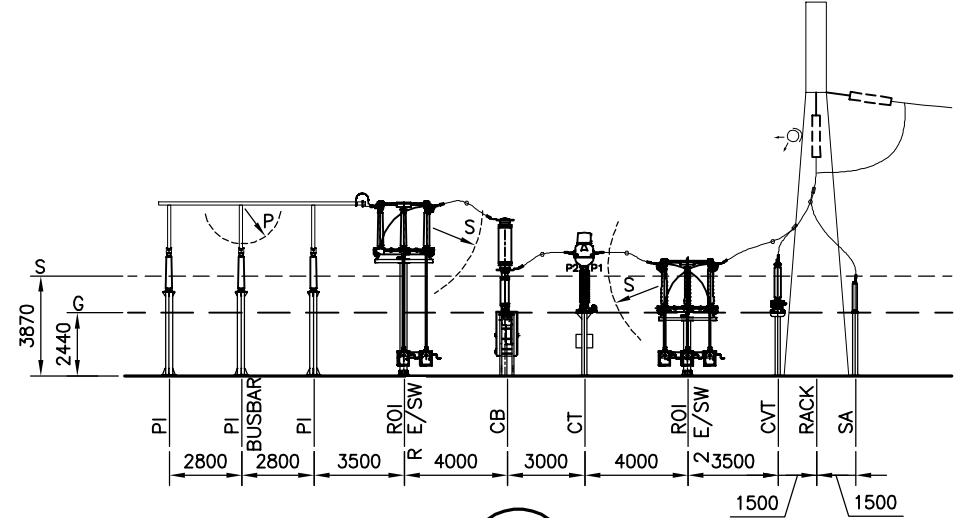
NOTES:

1. ALL DIMENSIONS ARE IN MILLIMETRES U.N.O.

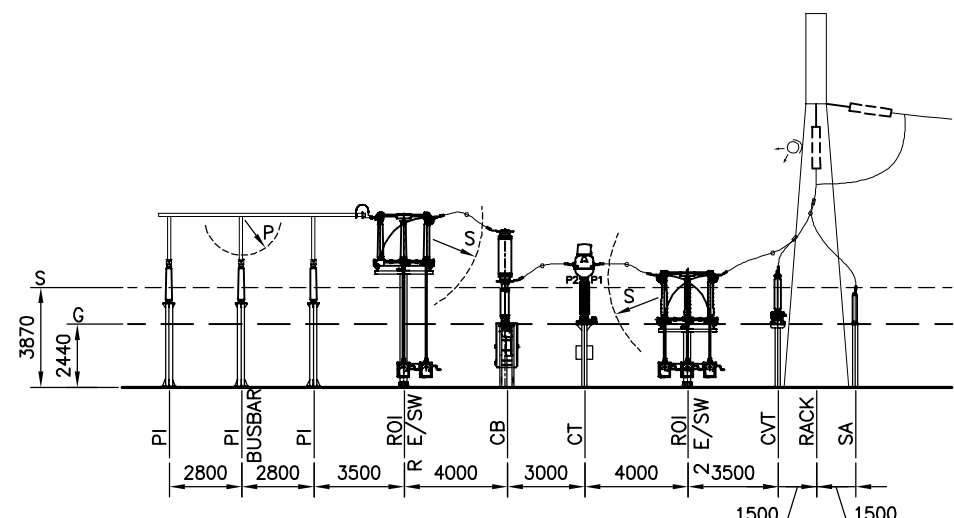
ADVERTISED PLAN



SECTION 1
SCALE 1: 200 P03



SECTION 2
SCALE 1: 200 P03

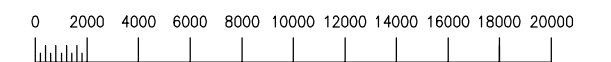


SECTION 3
SCALE 1: 200 P03

ELECTRICAL CLEARANCES		
SYMBOL	CLEARANCE TYPE	132kV DIM (mm)
G	GROUND SAFETY	2440
S	SECTION SAFETY	3870
E	PHASE TO EARTH	1300
P	PHASE - PHASE	1495
V	VERTICAL SAFETY	2770
H	HORIZONTAL SAFETY	3330

LEGEND

- FLOOD LIGHTS
- POWER DISTRIBUTION BOARD
- REMOTE OPERATED ISOLATOR
- CIRCUIT BREAKER
- CAPACITIVE VOLTAGE TRANSFORMER
- CURRENT TRANSFORMER
- POST INSULATOR
- SURGE ARRESTER
- EARTH SWITCH



SCALE 1:200
DIMENSIONS IN MILLIMETRES

This copied document to be made available for the sole purpose of enabling its consideration and review as part of a planning process under the Planning and Environment Act 1987. The document must not be used for any purpose which may breach any copyright

REFERENCE DRAWINGS	DRAWING TITLE	DRAWING No.
132kV SWITCHYARD - PLAN		TRTS-XXXXXXX-P03
500/132kV SWITCHYARD - K2 TRANSFORMER PLAN		TRTS-XXXXXXX-P01
500/132kV SWITCHYARD - K2 TRANSFORMER ELEVATIONS		TRTS-XXXXXXX-P02
500kV SWITCHYARD - MATERIAL SCHEDULE		TRTS-0161084-001 & 002
500kV SWITCHYARD - PLAN		TRTS-0161082-001

REVISION		DATE	REV	DESCRIPTION	BY	CONTRACTOR
		18.08.21	1.0	FIRST ISSUE (TC-0012062)	WCS	JACOBS

		TARRONE TERMINAL STATION 132kV SWITCHYARD ELEVATIONS SHEET 1		
DRAWN WCS		ENDORSED REV 0.1		Contractors No.
ENDORSED DATE		ISSUED		Drawing No. TRTS-XXXXXXX-P04
				0.1

4 00 X 5 66mm
A2

[UNCONTROLLED WHEN PRINTED]

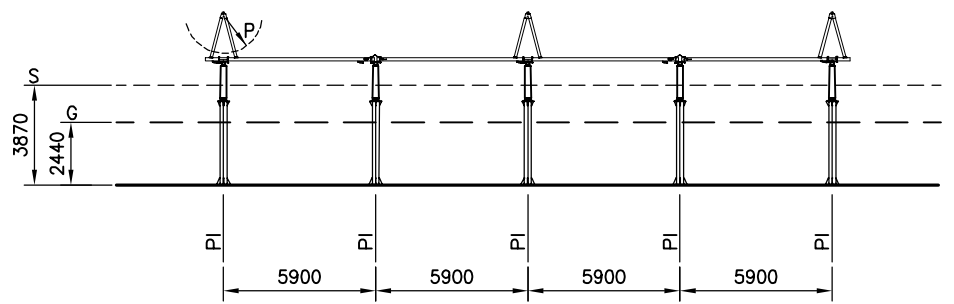
This drawing and any information or descriptive matter set out hereon are the confidential and copyright property of AusNet Services and must not be disclosed, loaned, copied or used for manufacturing, tendering or for any other purpose without written permission © 2019

[A2]

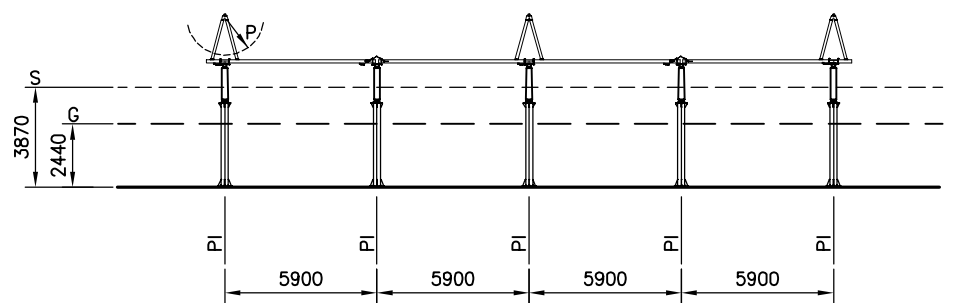
FOR INFORMATION

NOTES:
1. ALL DIMENSIONS ARE IN MILLIMETRES U.N.O.

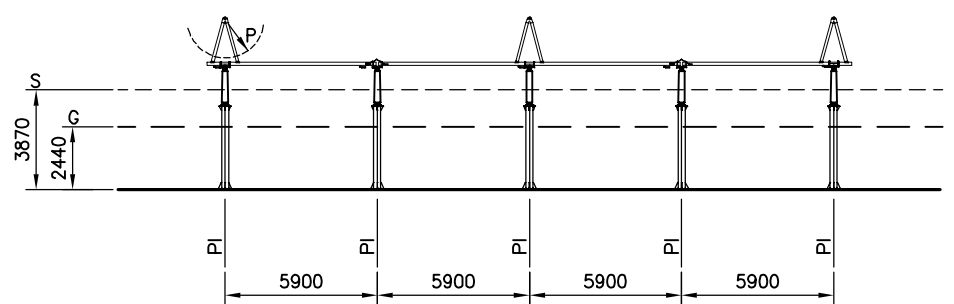
ADVERTISED PLAN



SECTION 4
SCALE 1: 200 P03
RED PHASE



SECTION 4
SCALE 1: 200 P03
WHITE PHASE

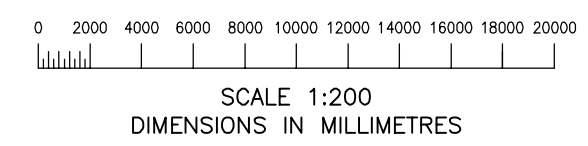


SECTION 4
SCALE 1: 200 P03
BLUE PHASE

ELECTRICAL CLEARANCES		
SYMBOL	CLEARANCE TYPE	132kV DIM (mm)
G	GROUND SAFETY	2440
S	SECTION SAFETY	3870
E	PHASE TO EARTH	1300
P	PHASE - PHASE	1495
V	VERTICAL SAFETY	2770
H	HORIZONTAL SAFETY	3330

LEGEND
PI POST INSULATOR

This copied document to be made available for the sole purpose of enabling its consideration and review as part of a planning process under the Planning and Environment Act 1987. The document must not be used for any purpose which may breach any copyright



REFERENCE DRAWINGS	132kV SWITCHYARD - PLAN	TRTS-XXXXXXX-P03	REVISION			AusNet services	TARRONE TERMINAL STATION				
	500/132kV SWITCHYARD - K2 TRANSFORMER PLAN	TRTS-XXXXXXX-P01					DRAWN WCS	132kV SWITCHYARD			
	500/132kV SWITCHYARD - K2 TRANSFORMER ELEVATIONS	TRTS-XXXXXXX-P02					ENDORSED REV 0.1	ELEVATIONS			
	500kV SWITCHYARD - MATERIAL SCHEDULE	TRTS-0161084-001 & 002					ENDORSED DATE	Spec No.	Order No.	Legacy No.	0.1
	500kV SWITCHYARD - PLAN	TRTS-0161082-001					ISSUED	Contractors No.		Drawing No.	
DRAWING TITLE	DRAWING No.			DATE	REV	DESCRIPTION	BY	CONTRACTOR	ISSUED	TRTS-XXXXXXX-P05	

400 X 566mm
A2

[UNCONTROLLED WHEN PRINTED]

This drawing and any information or descriptive matter set out hereon are the confidential and copyright property of AusNet Services and must not be disclosed, loaned, copied or used for manufacturing, tendering or for any other purpose without written permission © 2019

[A2]

AusNet Services STD A2

FOR INFORMATION