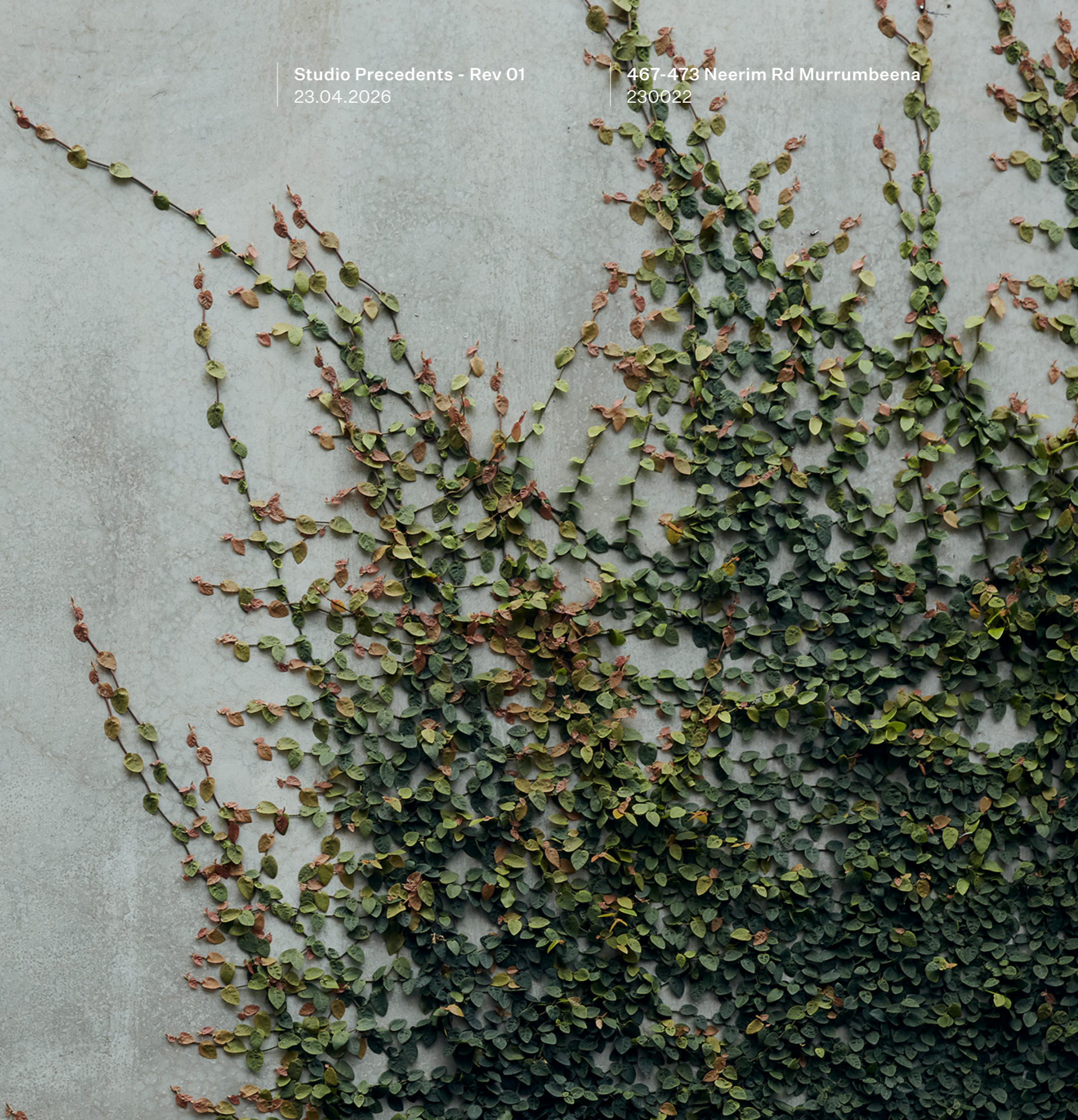


ADVERTISED PLAN

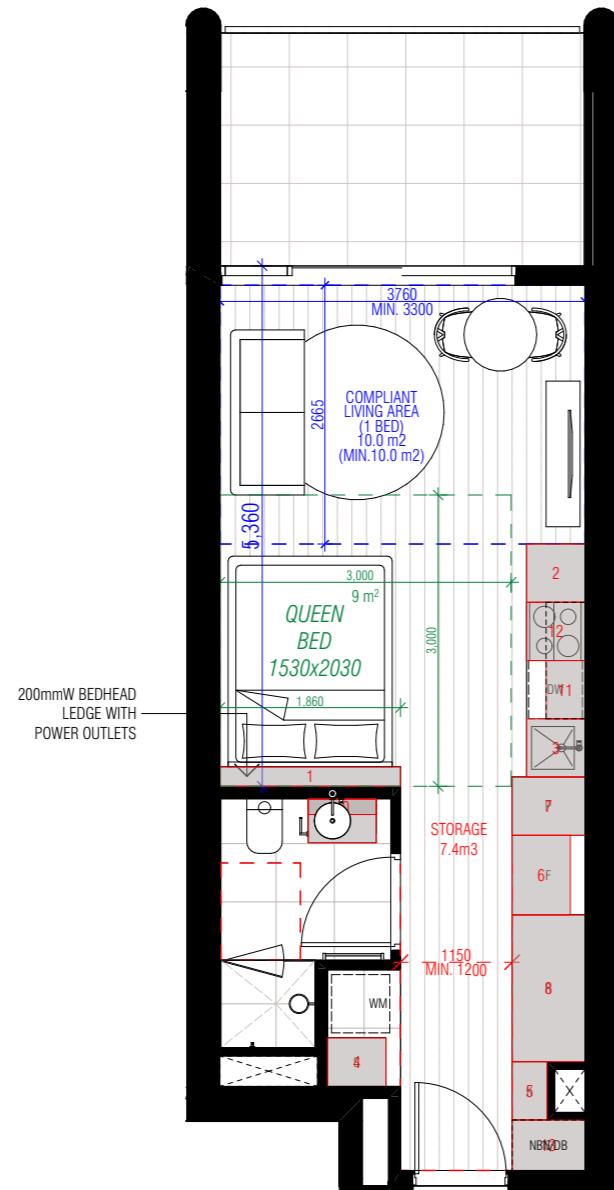
This copied document to be made available
for the sole purpose of enabling
its consideration and review as
part of a planning process under the
Planning and Environment Act 1987.
The document must not be used for any
purpose which may breach any
copyright

FIELDWORK



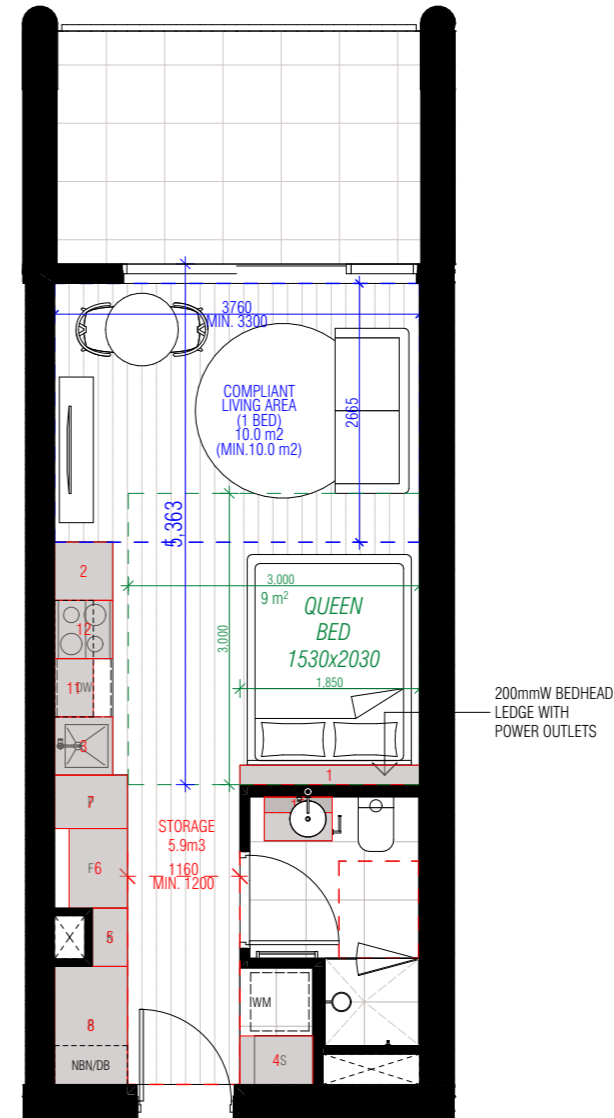
Proposed Studio Apartments

467-473 Neerim Rd Murrumbena



S01 TYPE S01 FITOUT PLAN
SCALE 1:50@A1

Approximate Internal NSA: 37m²
Approximate Balcony NSA: 10m²

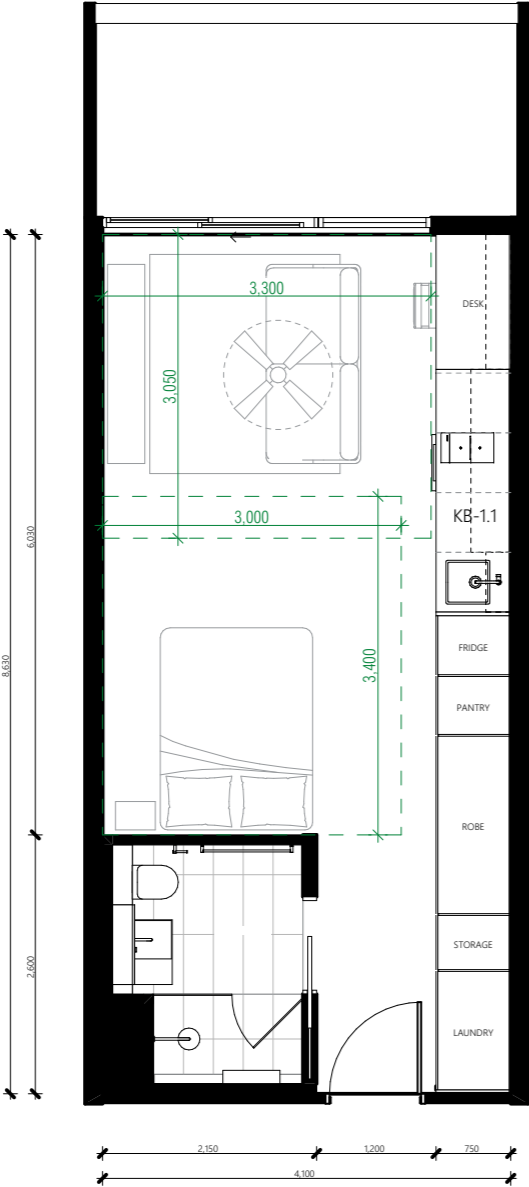


S02 TYPE S02 FITOUT PLAN
SCALE 1:50@A1

Approximate Internal NSA: 36m²
Approximate Balcony NSA: 10m²

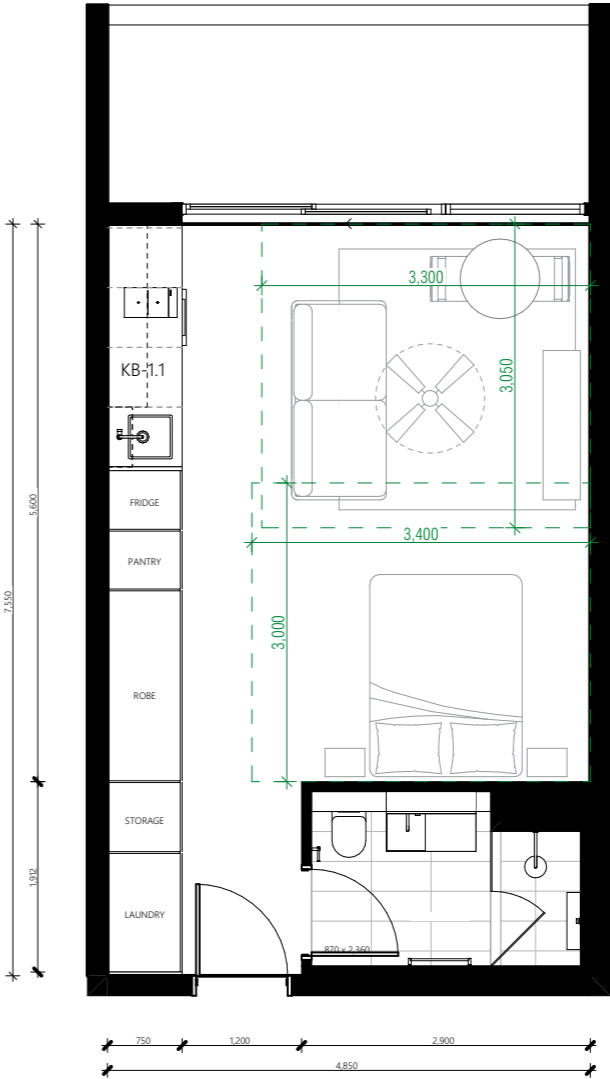
Precedent Studio Apartment

LIV Albert Fields, Brunswick (Breathe)



1 STUDIO TYPE STA

Approximate Internal NSA: 39.5m²
 Approximate Balcony NSA: 9.5m²

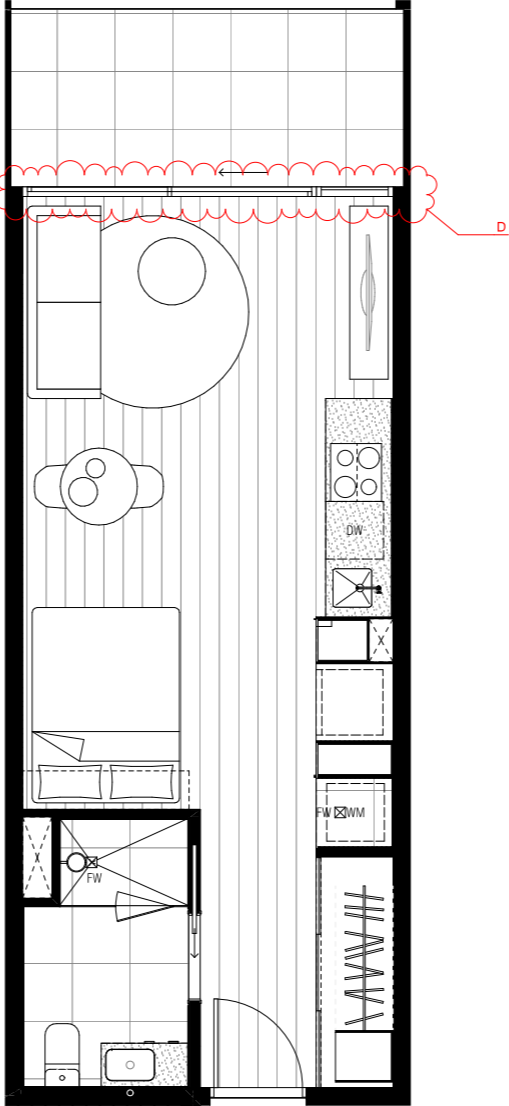


2 STUDIO TYPE STB

Approximate Internal NSA: 42m²
 Approximate Balcony NSA: 10.5m²

Precedent Studio Apartment

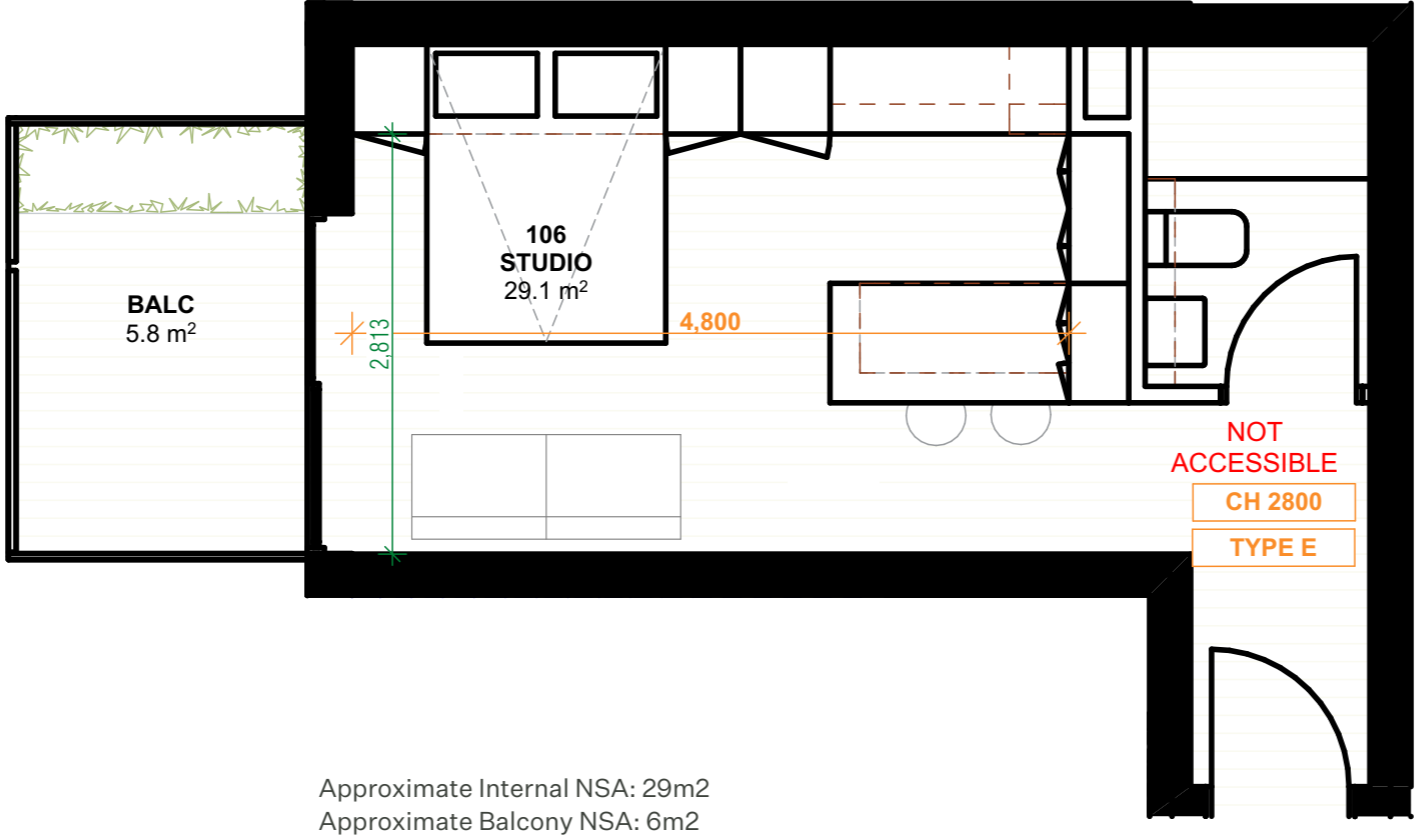
Ballarat Street, Brunswick (Fieldwork)



Approximate Internal NSA: 40m²
Approximate Balcony NSA: 8m²

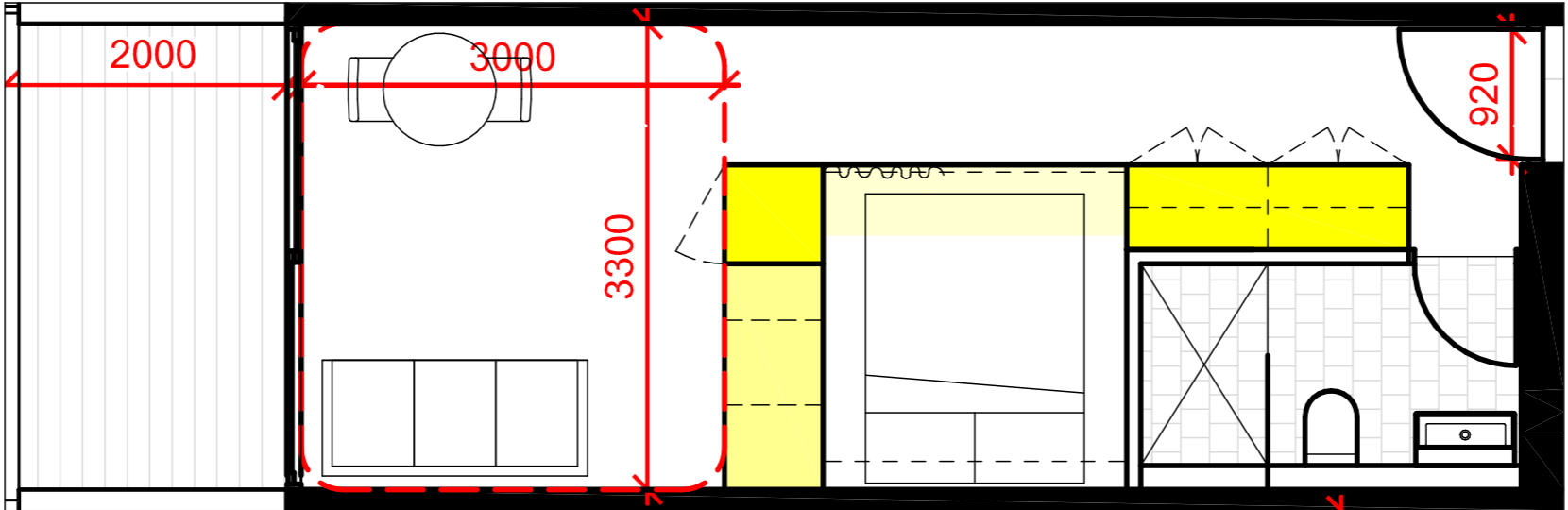
Precedent Studio Apartment

1-3 Duckett Street Brunswick (Nightingale - Breathe)

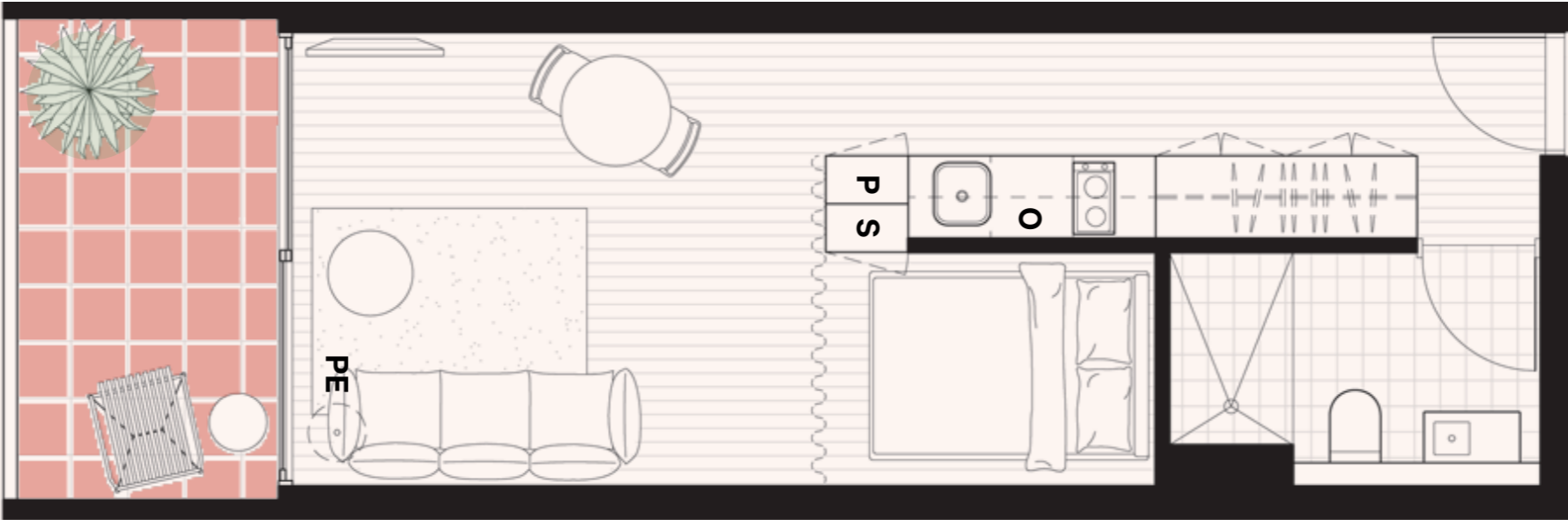


Precedent Studio Apartment

9 Duckett Street Brunswick (Nightingale - Kennedy Nolan)



Approximate Internal NSA: 33m²
Approximate Balcony NSA: 7m²

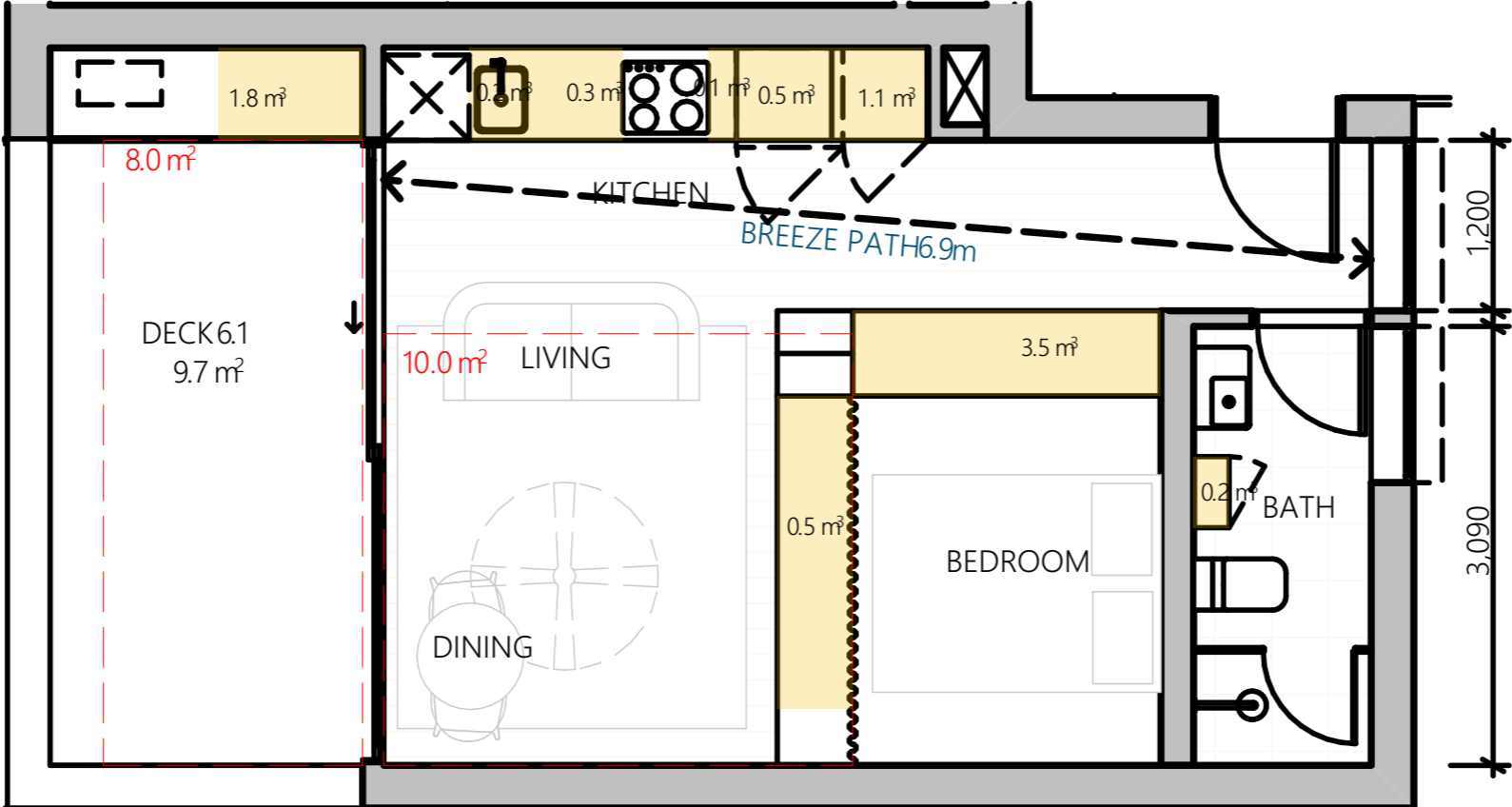


Approximate Internal NSA: 34m²
Approximate Balcony NSA: 7m²

FIELDWORK

Precedent Studio Apartment

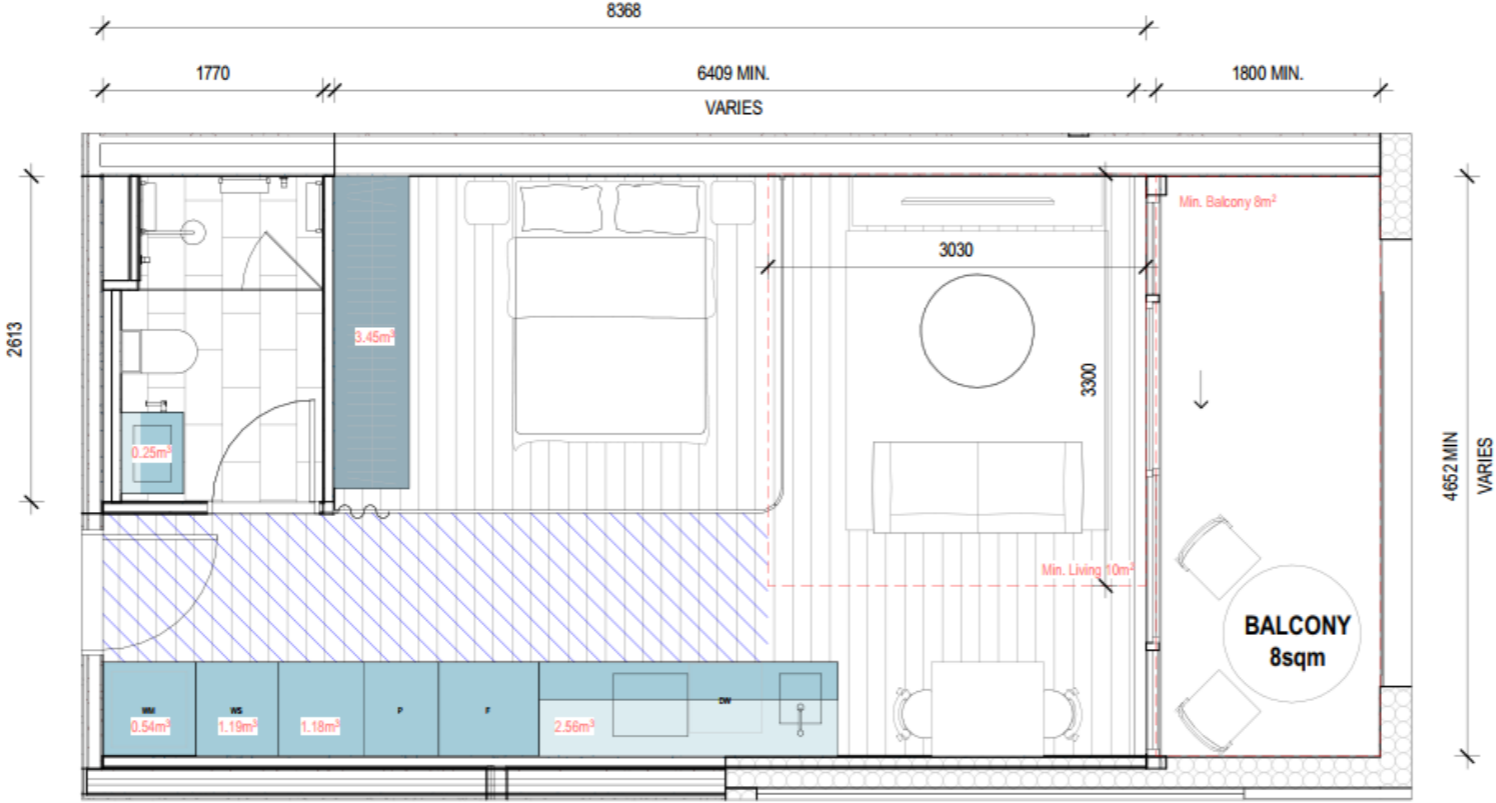
12 Duckett Street Brunswick (Nightingale - Clare Cousins)



Approximate Internal NSA: 38m²
Approximate Balcony NSA: 14m²

Precedent Studio Apartment

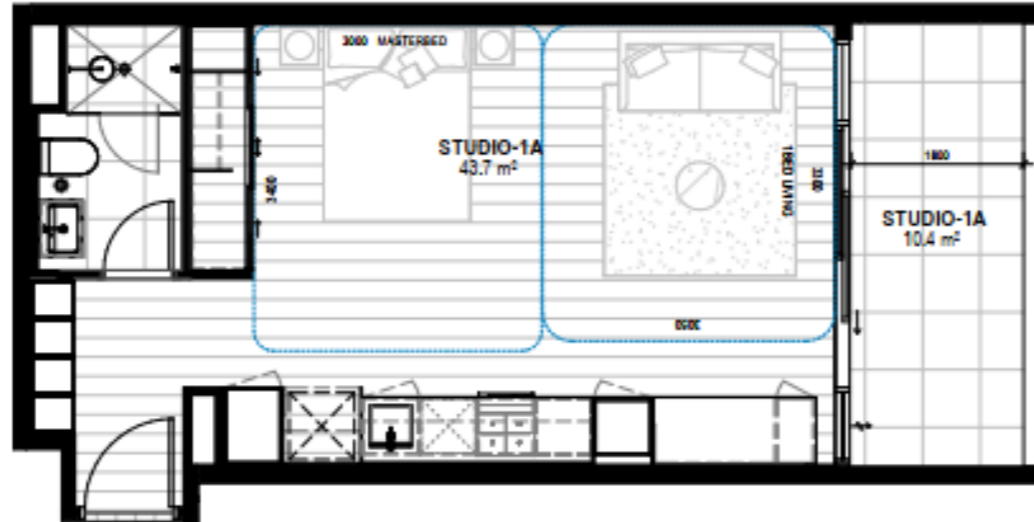
30 St Georges Road, Preston



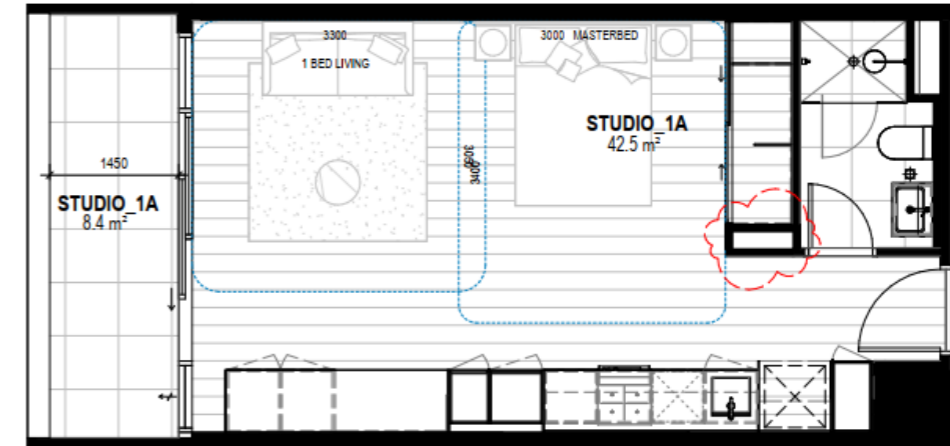
Approximate Internal NSA: 43m2
Approximate Balcony NSA: 10m2

Precedent Studio Apartment

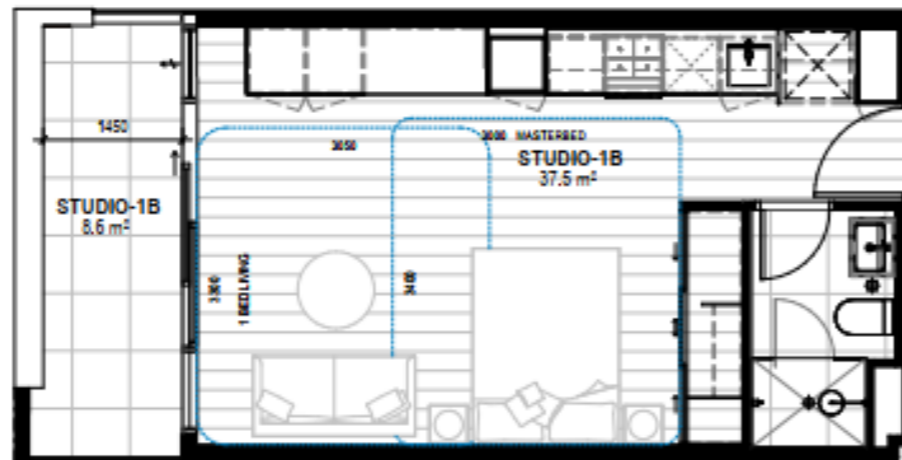
402-434 Macaulay Road, Kensington



Approximate Internal NSA: 43.5m²
Approximate Balcony NSA: 10.5m²



Approximate Internal NSA: 42.5m²
Approximate Balcony NSA: 8.5m²



Approximate Internal NSA: 37.5m²
Approximate Balcony NSA: 8.5m²

FIELDWORK



© 2026, Fieldwork Projects Pty Ltd
ATFT Fieldwork Projects Unit Trust

ABN 23 117 338 774

The information contained in this document is confidential and intended solely for the use of the intended receiver for the purpose for which it has been prepared and no representation is made or is to be implied as being made to any third party. Use or copying of this document in whole or in part without the written permission of Fieldwork constitutes an infringement of copyright. The intellectual property contained in this document remains the property of Fieldwork.

Cover Image by Tom Ross

Fieldwork
150 Langridge Street, Collingwood 3066
Melbourne, VIC
www.fieldworkprojects.com.au
(03) 9081 2401
hello@fieldworkprojects.com.au