

ADVERTISED  
PLAN

# Design for a better future /

This copied document to be made available for the sole purpose of enabling its consideration and review as part of a planning process under the Planning and Environment Act 1987. The document must not be used for any purpose which may breach any copyright

wsp

FEBRUARY 2026

## 467-473 NEERIM ROAD MURRUMBEENA WASTE MANAGEMENT PLAN



# Question today Imagine tomorrow Create for the future

**467-473 Neerim Road, Murrumbena**

**Waste Management Plan**

WSP




Level 11, 567 Collins St  
Melbourne VIC 3000

Tel: +61 3 9861 1111

Fax: +61 3 9861 1144

wsp.com

REV	DATE	DETAILS
A	26/07/2024	Waste Management Plan
B	31/07/2024	Waste Management Plan
C	04/09/2024	Waste Management Plan
D	26/09/2025	Draft Waste Management Plan
E	15/10/2025	Waste Management Plan
F	10/02/2026	Waste Management Plan

	NAME	DATE	SIGNATURE
Prepared by:	Laurence Gamble	10/02/2026	
Reviewed by:	Maria Madsen	10/02/2026	
Approved by:	Laurence Gamble	10/02/2026	

This document may contain confidential and legally privileged information, neither of which are intended to be waived, and must be used only for its intended purpose. Any unauthorised copying, dissemination or use in any form or by any means other than by the addressee, is strictly prohibited. If you have received this document in error or by any means other than as authorised addressee, please notify us immediately and we will arrange for its return to us.



# TABLE OF CONTENTS

<b>1</b>	<b>SUMMARY.....</b>	<b>1</b>
<b>2</b>	<b>INTRODUCTION.....</b>	<b>2</b>
<b>2.1</b>	<b>LAND USE .....</b>	<b>2</b>
<b>3</b>	<b>RESPONSE TO PERMIT CONDITIONS.....</b>	<b>3</b>
<b>4</b>	<b>RESIDENTIAL WASTE MANAGEMENT PLAN.....</b>	<b>4</b>
<b>4.1</b>	<b>WASTE GENERATION.....</b>	<b>4</b>
<b>4.2</b>	<b>WASTE SYSTEMS .....</b>	<b>4</b>
4.2.1	DUAL CHUTE SYSTEM.....	4
4.2.2	GARBAGE, COMMINGLED RECYCLING.....	5
4.2.3	FOOD ORGANICS, GLASS .....	5
4.2.4	HARD WASTE.....	5
4.2.5	CHARITY.....	5
<b>4.3</b>	<b>BIN QUANTITY, SIZE AND COLLECTION FREQUENCY .....</b>	<b>6</b>
<b>4.4</b>	<b>WASTE STORAGE AREA &amp; LOCATION .....</b>	<b>6</b>
<b>4.5</b>	<b>WASTE COLLECTION METHODOLOGY .....</b>	<b>7</b>
<b>5</b>	<b>COMMERCIAL WASTE MANAGEMENT PLAN.....</b>	<b>8</b>
<b>5.1</b>	<b>WASTE GENERATION.....</b>	<b>8</b>
<b>5.2</b>	<b>WASTE SYSTEMS .....</b>	<b>8</b>
5.2.1	GARBAGE AND COMMINGLED RECYCLING.....	9
5.2.2	CARDBOARD.....	9
5.2.3	FOOD ORGANICS, GLASS .....	9
5.2.4	HARD WASTE.....	9
<b>5.3</b>	<b>BIN QUANTITY, SIZE AND COLLECTION FREQUENCY .....</b>	<b>10</b>
<b>5.4</b>	<b>WASTE STORAGE AREA &amp; LOCATION .....</b>	<b>11</b>
<b>5.5</b>	<b>WASTE COLLECTION METHODOLOGY .....</b>	<b>11</b>
<b>6</b>	<b>ADDITIONAL INFORMATION.....</b>	<b>12</b>
<b>6.1</b>	<b>STANDARDS &amp; COMPLIANCE .....</b>	<b>12</b>
6.1.1	VENTILATION .....	12
6.1.2	WASHING AND VERMIN PROTECTION.....	12
6.1.3	NOISE REDUCTION .....	12
<b>6.2</b>	<b>BIN COLOUR AND SUPPLIER.....</b>	<b>12</b>
<b>6.3</b>	<b>SIGNAGE .....</b>	<b>12</b>
<b>6.4</b>	<b>HIGH LEVEL PURCHASING SCHEDULE.....</b>	<b>13</b>
<b>6.5</b>	<b>SUPPLIER CONTACT INFORMATION .....</b>	<b>14</b>



## LIST OF APPENDICES

APPENDIX A SCALED WASTE ROOM DRAWINGS

APPENDIX B SWEEP PATH DIAGRAMS

APPENDIX C SUPERMARKET WASTE GENERATION RATES  
REFERENCE

## List of Tables

---

TABLE 1	RESIDENTIAL WASTE COLLECTION SUMMARY .....	1
TABLE 2	COMMERCIAL BIN COLLECTION SUMMARY .....	1
TABLE 3	DEVELOPMENT SUMMARY .....	2
TABLE 4	RESIDENTIAL WASTE GENERATION RATES .....	4
TABLE 5	RESIDENTIAL WASTE GENERATION ASSESSMENT .....	4
TABLE 6	RESIDENTIAL BIN INFORMATION AND CAPACITY .....	6
TABLE 7	TYPICAL EQUIPMENT DIMENSIONS .....	6
TABLE 8	RESIDENTIAL WASTE STORAGE AREA REQUIREMENT .....	6
TABLE 9	RESIDENTIAL WASTE COLLECTION SUMMARY .....	7
TABLE 10	COMMERCIAL WASTE GENERATION RATES .....	8
TABLE 11	COMMERCIAL WASTE GENERATION ASSESSMENT .....	8
TABLE 12	WASTE FITOUT REQUIREMENTS .....	9
TABLE 13	SUPERMARKET WASTE EQUIPMENT INFORMATION AND CAPACITY .....	10
TABLE 14	RETAIL BIN INFORMATION AND CAPACITY .....	10
TABLE 15	TYPICAL EQUIPMENT DIMENSIONS .....	10
TABLE 16	COMMERCIAL WASTE STORAGE AREA REQUIREMENT .....	11
TABLE 17	COMMERCIAL BIN COLLECTION SUMMARY .....	11
TABLE 18	EQUIPMENT SUPPLY SCHEDULE .....	13
TABLE 19	SUPPLIER CONTACT LIST .....	14

# 1 SUMMARY

The below is a summary of the waste management strategy proposed for the subject site. The complete report must be read in detail prior to implementing the operational waste management plan.

Located at 467-473 Neerim Road, Murrumbena, the subject development proposes one mixed-use tower, providing a range of ground floor retail/commercial activity with residential apartments on the upper levels.

Waste will be collected through a private contractor service as follows:

**Table 1 Residential Waste Collection Summary**

Waste Stream	Equipment for Collection	Collection Frequency	Collection Operator
Garbage	4 x 1100L Bins	2 x per week	Private Contractor
Recycling	6 x 1100L Bins	2 x per week	Private Contractor
Food Organics	10 x 240L Bins	2 x per week	Private Contractor
Glass	4 x 240L Bins	2 x per week	Private Contractor

**Table 2 Commercial Bin Collection Summary**

Waste Stream	Equipment for Collection		Collection Frequency	Collection Operator
	Supermarket	Retail		
Garbage	3 x 1,100L bins	2 x 1,100L bins	3 x per week	Private Contractor
Recycling	-	2 x 1,100L bins	2 x per week	Private Contractor
Cardboard	3 x bales	-	3 x per week	Private Contractor
Food Organics	1 x 660L bins	2 x 240L bins	3 x per week	Private Contractor
Glass	-	1 x 240L bins	2 x per week	Private Contractor

**Residential waste** collections will be undertaken onsite from the basement via a low-profile waste collection vehicle (6.4 metre length, 2.1 metre height clear required) or smaller. Collection vehicles will enter and exit the basement in a forward direction via the vehicle access ramp from Neerim Road. The collection vehicle will circulate through the basement carpark and prop itself adjacent to the residential waste rooms, with vehicle operators collecting bins directly from the waste rooms and return them immediately upon emptying.

**Commercial waste** collections will be undertaken onsite from the ground level loading dock via an MRV sized waste collection vehicle (8.8 metre length, 4.0 metre height clear required) or smaller. Collection vehicles will enter and exit the loading dock in a forward direction via the Neerim Road crossover. The collection vehicle will prop within the loading dock adjacent to the commercial waste rooms, with vehicle operators collecting bins directly from the waste rooms and return them immediately upon emptying.

Bins will not be stored outside of the title boundary or presented to kerb for collection at any time.

## 2 INTRODUCTION

The following Waste Management Plan (WMP) has been prepared for the proposed mixed-use development at 467-473 Neerim Road, Murrumbena.

This Waste Management Plan (WMP) and the waste generation rates therein have been prepared based on the Sustainability Victoria document *Waste Management and Recycling in Multi-unit Developments* (2019) and current best practice waste management methodology and technologies commonly available in Australia.

### 2.1 LAND USE

<b>Client:</b>	HHP MAKE NRM 1 PTY LTD
<b>Town Planning Application:</b>	PA2403365
<b>Land Use Type:</b>	Mixed use
<b>Number of Levels:</b>	8 storeys
<b>Number of Basements:</b>	2 basements

**Table 3 Development Summary**

Residential	
Use	Quantity
Studio Apartment	29
One Bedroom apartment	88
Two Bedroom apartment	27
Commercial	
Use	Area
Retail 1 (Supermarket)	806m <sup>2</sup>
Retail 2 (F&B)	85m <sup>2</sup>
Retail 3 (F&B)	84m <sup>2</sup>
Retail 4 (F&B)	104m <sup>2</sup>
Retail 5	66m <sup>2</sup>
Retail 6	83m <sup>2</sup>

### 3 RESPONSE TO PERMIT CONDITIONS

A planning permit for the subject site has been issued (PA2403365), of which Condition 19 (replicated in full below) addresses the Waste Management Plan. This Waste Management Plan satisfies these conditions with responses as per Table 4 below:

**Table 4 Response to Permit Conditions**

PA2403365 Condition	WMP Response
<b>19. Waste Management Plan</b>	
<i>Concurrent with endorsement of plans, a waste management plan must be approved and endorsed by the responsible authority, in consultation with Glen Eira City Council. The waste management plan must be prepared to the satisfaction of the responsible authority, be generally in accordance with the waste management plan prepared by WSP, dated September 2024, but modified to show:</i>	This Waste Management Plan is consistent with the previous September 2024 issue, with no fundamental change in waste handling, storage, or collection arrangement.
<i>a) Any changes required to ensure consistency with the approved and endorsed plans</i>	The WMP has been revised in accordance with the updated drawings and permit conditions as shown in this report. Updated drawings are provided in Appendix A.
<i>b) The following changes to the residential component:</i>	
<i>i. The residential bin capacity to match the estimated weekly volume for the organics stream.</i>	Organic waste capacity and volume has been revised (see Section 4.3).
<i>ii. The collection frequency from 3 x week to a maximum of 2 x week in line with Glen Eira City Council policy and adjust bin numbers where necessary.</i>	Residential waste collection frequency has been revised to 2x per week (see Section 4.5).
<i>c) The following changes to the commercial component:</i>	
<i>i. Provision of further supporting information to demonstrate the proposed waste generation rate for the supermarket is adequate with regard to the Sustainability Victoria rate.</i>	The supermarket waste generation rates, as shown, have been benchmarked against the waste volumes reported within the Woolworths document <i>2022 Sustainability Report (2022)</i> . An extract from this document (with annotations) is provided in Appendix C for reference.
<i>ii. Details of a waste transfer pathway between relevant tenancies and the bin store.</i>	Waste transfer pathways are shown in Appendix A.
<i>iii. The bin lid colour for organics corrected to light green.</i>	Organic bin lid colour has been revised (See section 6.2).
<i>The responsible authority may consent in writing to vary these requirements</i>	

# 4 RESIDENTIAL WASTE MANAGEMENT PLAN

## 4.1 WASTE GENERATION

Residential waste generation rates are shown in Table 5. A waste generation assessment prepared in accordance with these rates is shown in Table 6.

**Table 5 Residential Waste Generation Rates**

Use	Garbage (L/dwelling/week)	Recycling (L/dwelling/week)	Food Organics (L/dwelling/week)	Glass (L/dwelling/week)
Studio Apartment	52	70	28	10
One Bedroom Apartment	52	70	28	10
Two Bedroom Apartment	65	88	35	12

**Table 6 Residential Waste Generation Assessment**

Use	Quantity	Garbage (L/week)	Recycling (L/week)	Organics (L/week)	Glass (L/week)
Studio Apartment	29	1,508	2,030	812	290
One Bedroom Apartment	88	4,576	6,160	2,464	880
Two Bedroom Apartment	27	1,755	2,376	945	324
<b>TOTAL</b>		<b>7,839</b>	<b>10,566</b>	<b>4,221</b>	<b>1,494</b>

## 4.2 WASTE SYSTEMS

Waste shall be sorted on-site by residents as appropriate into the following streams:

- Garbage (General Waste)
- Commingled Recycling
- Food Organics
- Glass
- Hard Waste / Electronic Waste
- Charity

Two separate residential bin rooms will be provided at basement level (“east” and “west”) to manage waste of the two separate dual chute systems (refer Section 4.2.1 below), in addition to a residential hard waste store at ground level (total 2 x residential waste rooms total).

### 4.2.1 DUAL CHUTE SYSTEM

Residents will generally dispose of waste using the provided dual chute systems as appropriate, with **two** dual chute systems provided per residential level for ease of access. Each dual chute system will contain one chute dedicated to garbage and another dedicated to commingled recycling.

Each waste chute will terminate into 1100L bins within the residential waste stores at basement level. Building management will rotate bins beneath the chutes on an as required basis (anticipated once per day per chute, on average).

The point of chute termination within each waste room will be suitably screened to provide safe environment for residents / facilities management as appropriate.

#### 4.2.2 GARBAGE, COMMINGLED RECYCLING

Each dwelling shall have provision for plastic bins for the temporary holding of garbage and commingled recyclables. Residents will transfer the waste from these bins as required to the appropriate waste chute, as shown in Appendix A.

Garbage is to be disposed of bagged. Commingled Recycling is to be disposed of loosely.

#### 4.2.3 FOOD ORGANICS, GLASS

Food organics and glass drop off bins will be provided within each residential waste room at basement level. Residents will access these rooms (and the bins therein) via the lifts (refer Appendix A).

To assist in the transfer of organic waste, each dwelling shall have provision for “kitchen caddies” for the temporary holding of organics (food waste). Residents will be able to transfer organic waste from their respective kitchen caddies to the 240L drop off bins at basement level as required. Kitchen caddies may be lined with biodegradable bags (i.e. corn-starch bags) or paper (i.e. newspaper) if desired.

Food organics and glass are to be disposed of loosely.

#### 4.2.4 HARD WASTE

A 10.00m<sup>2</sup> hard waste area will be provided at ground level. Hard waste will be transferred between the residential levels and waste room via the residential lift(s) as shown in Appendix A. Building management will assist with and supervise the transfer of residential hard waste as appropriate.

Of the area provided, approximately half will be dedicated to the disposal of e-waste. It is recommended a 120L e-waste bin be incorporated into this area for the disposal of smaller e-waste goods (such as phones and computer keyboards), with larger goods (such as televisions and computer monitors) being disposed of across the remaining floor space.

Hard waste and e-waste will be collected as separate streams by a private collection contractor on an “as required” basis.

#### 4.2.5 CHARITY

A 660L charity bin for the disposal of high-quality charitable goods such as clothing or sporting goods is to be provided within the hard waste room at ground level.

The Building Manager is to select a charity who is to provide the bins and perform collections on an as required basis.

## 4.3 BIN QUANTITY, SIZE AND COLLECTION FREQUENCY

Table 7 contains information regarding residential bin quantity, size and frequency of collection.

**Table 7 Residential Bin Information and Capacity**

Residential Bin Information and Capacity				
Waste Stream	No. Bins	Collections Per Week	Weekly Capacity	Weekly Volume
Garbage	4x 1100L	2	8,800L	7,839L
Recycling	6x 1100L	2	13,200L	10,566L
Organics	10x 240L	2	4,800L	4,221L
Glass	4x 240L	2	1,920L	1,494L

Typical equipment dimensions are provided in Table 8 below. Note that the specifications listed are for reference only and must be confirmed with the nominated supplier prior to any works commencing.

**Table 8 Typical Equipment Dimensions**

Typical Equipment Dimensions (mm)			
Item	Width	Depth	Height
1100L Bin	1240	1070	1330
240L Bin	585	730	1060

## 4.4 WASTE STORAGE AREA & LOCATION

Table 9 demonstrates the cumulative area requirements (excluding circulation) and provision of waste areas. Please refer to scaled waste room drawing shown in Appendix A.

**Table 9 Residential Waste Storage Area Requirement**

Waste Store	Item	Area Required	Total Area Required	Area Provided
Residential Waste Room East (Basement)	5 x 1100L Bins (Garbage, Recycling)	6.65m <sup>2</sup>	9.66m <sup>2</sup>	27.00m <sup>2</sup>
	7 x 240L Bins (Food Organics, Glass)	3.01m <sup>2</sup>		
Residential Waste Room West (Basement)	5 x 1100L Bins (Garbage, Recycling)	6.65m <sup>2</sup>	9.66m <sup>2</sup>	30.00m <sup>2</sup>
	7 x 240L Bins (Food Organics, Glass)	3.01m <sup>2</sup>		
Residential Hard Waste Room (Ground)	Hard Waste + Charity Bin	10.00m <sup>2</sup>	10.00m <sup>2</sup>	16.00m <sup>2</sup>
<b>TOTAL</b>		<b>29.32m<sup>2</sup></b>	<b>29.32m<sup>2</sup></b>	<b>73.00m<sup>2</sup></b>

---

## 4.5 WASTE COLLECTION METHODOLOGY

Residential waste will be collected by as outlined in Table 10. A private collection contractor will be engaged to perform collections until such time as the City of Glen Eira collection service is able to perform collections in accordance with this Waste Management Plan.

**Table 10 Residential Waste Collection Summary**

Waste Stream	No. Bins	Collection Frequency	Collection Operator
Garbage	4 x 1100L Bins	2 x per week	Private Contractor
Recycling	6 x 1100L Bins	2 x per week	Private Contractor
Food Organics	10 x 240L Bins	2 x per week	Private Contractor
Glass	4 x 240L Bins	2 x per week	Private Contractor

Collections will be undertaken onsite from the basement via a low-profile waste collection vehicle (6.4 metre length, 2.1 metre height clear required) or smaller. Collection vehicles will enter and exit the basement in a forward direction via the vehicle access ramp from Neerim Road (refer Appendix B for swept path diagrams).

For ease of collection, a temporary waste holding point is provided adjacent to the storage cages at basement level in which bins from residential waste room west will be held prior to collection (refer Appendix A). Facilities management will be responsible for transferring bins to the temporary holding point prior to collection, and for returning them to residential waste room west following collections.

The collection vehicle will circulate through the basement carpark and prop itself adjacent to the residential waste pick up points (bins collected directly from residential waste room east **or** the temporary waste hold), with vehicle operators collecting bins directly from the waste pick up points and return them immediately upon emptying (see Appendix A). Bins will not be stored outside of the title boundary or presented to kerb for collection at any time.

Building management will ensure sufficient access is provided for collection vehicle operators during collection times. Typically, operators are provided with keypad/swipe card access to the service doors.

## 5 COMMERCIAL WASTE MANAGEMENT PLAN

### 5.1 WASTE GENERATION

Commercial waste generation rates per week are shown in Table 11. A waste generation assessment prepared in accordance with these rates is shown in Table 12. Calculations are based on a 7 day per week operation for all uses.

Waste generation rates have been adopted from the Sustainability Victoria (SV) document *Waste Management and Recycling in Multi-unit Developments* (2019) or from case study data held by WSP as noted below.

Note that the supermarket waste generation rates as shown have been benchmarked against the waste volumes reported within the Woolworths document *2022 Sustainability Report* (2022). An extract from this document (with annotations) is provided in Appendix C for reference.

**Table 11 Commercial Waste Generation Rates**

Use	Generation Rate	Waste Generation Rate (L/100m <sup>2</sup> /week)				
		Garbage	Recycling	Cardboard	Organics	Glass
Retail 1	Supermarket (WSP)	960	-	2,350	185	-
Retail 2, 3, 4	Retail - food (SV)	1,680	1,250	-	420	150
Retail 5, 6	Retail - non food (SV)	350	350	-	-	-

**Table 12 Commercial Waste Generation Assessment**

Use	Area	Waste Generation Assessment (L/week)				
		Garbage	Recycling	Cardboard	Organics	Glass
Retail 1	806m <sup>2</sup>	7,738	-	18,941	1,491	-
<b>SUBTOTAL - SUPERMARKET</b>		<b>7,738</b>	<b>-</b>	<b>18,941</b>	<b>1,491</b>	<b>-</b>
Retail 2, 3, 4	273m <sup>2</sup>	4,586	3,413	-	1,147	410
Retail 5, 6	149m <sup>2</sup>	522	522	-	-	-
<b>SUBTOTAL - RETAIL</b>		<b>5,108</b>	<b>3,935</b>	<b>-</b>	<b>1,147</b>	<b>410</b>
<b>GRAND TOTAL</b>		<b>12,846</b>	<b>3,935</b>	<b>18,941</b>	<b>2,638</b>	<b>410</b>

### 5.2 WASTE SYSTEMS

Waste shall be sorted on-site by commercial staff/cleaners as appropriate into the following streams:

- Garbage (General Waste)
- Commingled Recycling
- Cardboard
- Food Organics
- Glass
- Hard Waste

Separate supermarket and retail waste rooms (total 2 x commercial waste rooms) will be provided adjacent to the ground level loading dock for commercial disposal.

Commercial waste room access will be limited to nominated commercial staff only.

### 5.2.1 GARBAGE AND COMMINGLED RECYCLING

Each commercial space of the development shall have provision for plastic lined garbage and commingled recycling bins for the temporary holding of waste, to have minimum cumulative holding capacities as shown in Table 13.

The “Transfer Rate” refers to the frequency at which waste should be transferred by cleaners/staff from the temporary holding bins to the commercial waste room at basement level for disposal per day.

**Table 13 Waste Fitout Requirements**

Use	Transfer Rate	Temporary Holding Capacities	
		Garbage	Recycling
Supermarket	Once per day	140L/100m <sup>2</sup>	-
Retail 2 to 4 F&B	Three times per day	100L/100m <sup>2</sup>	80L/100m <sup>2</sup>
Retail 5 & 6 no food	Once per day	50 L/100m <sup>2</sup>	50L/100m <sup>2</sup>

Staff/cleaners will manually empty waste from the temporary holding bins directly into the 1100L drop off bins provided within the commercial waste stores at ground level (refer Appendix A).

Garbage is to be disposed of bagged. Commingled recyclables are to be disposed of loosely, with any plastic liners to be disposed of within the garbage bins.

### 5.2.2 CARDBOARD

A baler will be provided within the supermarket waste room waste adjacent to the ground level loading dock (refer Appendix A). Baler use will be limited to trained staff only.

Cardboard is to be disposed of loosely within the baler.

### 5.2.3 FOOD ORGANICS, GLASS

Food and beverage spaces of the site shall be further furnished with small organics and/or glass bins for the temporary holding of waste as appropriate, often provided as plastic tubs for ease of handling (up to 20L in size) and stored within the kitchen / back of house areas. Tubs can be stacked and transferred via trolleys if desired.

Staff/cleaners will manually empty organic waste from the temporary holding bins directly into the 240L (retail) or 600L (supermarket) drop off bins provided within the commercial waste stores at ground level (refer Appendix A).

Organic waste and glass waste are to be disposed of loosely.

### 5.2.4 HARD WASTE

Any hard waste and/or electronic waste generated by the commercial spaces will be temporarily held within the back of house areas of each tenancy and transferred to the loading dock at ground level for collection as required.

Commercial hard waste will be collected by a private collection contractor on an as required basis.

## 5.3 BIN QUANTITY, SIZE AND COLLECTION FREQUENCY

Table 14 and Table 15 contain information regarding bin quantity, size and frequency of collection.

As per industry standard, a 5:1 compaction ratio has been assumed for the cardboard baler. Greater compaction ratio can be achieved under certain conditions.

**Table 14 Supermarket Waste Equipment Information and Capacity**

Supermarket Waste Information and Capacity					
Waste Stream	Equipment	Compaction	Collections Per Week	Weekly Capacity	Weekly Volume
Garbage	3 x 1,100L bins	nil	3	9,900L	7,738L
Cardboard	3 x Bales*	5:1	3	25,200L	18,941L
Food Organics	1 x 660L bin	nil	3	1,980L	1,491L

\* Bramidan B5W baler used as reference model. Actual baler model may vary in actual practice.

**Table 15 Retail Bin Information and Capacity**

Retail Waste Information and Capacity					
Waste Stream	Equipment	Compaction	Collections Per Week	Weekly Capacity	Weekly Volume
Garbage	2 x 1,100L bins	nil	3	6,600L	5,108L
Recycling	2 x 1,100L bins	nil	2	4,400L	3,935L
Food Organics	2 x 240L bins	nil	3	1,440L	1,147L
Glass	1 x 240L bin	nil	2	480L	410L

Typical equipment dimensions are provided in Table 16 below. Note that the specifications listed are for reference only and must be confirmed with the nominated supplier prior to any works commencing.

**Table 16 Typical Equipment Dimensions**

Typical Equipment Dimensions (mm)				
Item	Width	Depth	Height	
1100L Bin	1240	1070	1330	
660L Bin	1260	780	1330	
240L Bin	585	730	1060	
B5W Baler	1355	895	2370	
B5W Bale	700	800	1000	

## 5.4 WASTE STORAGE AREA & LOCATION

Table 17 demonstrates the cumulative area requirements (excluding circulation) and provision of waste areas. Please refer to scaled waste room drawing shown in Appendix A.

**Table 17 Commercial Waste Storage Area Requirement**

Waste Store	Item	Area Required	Total Area Required	Area Provided
Supermarket Waste Room (Ground)	3x 1,100L Bins (Garbage)	3.99m <sup>2</sup>	7.58m <sup>2</sup>	20.00m <sup>2</sup>
	1 x 660L Bin (Food Organics)	0.98m <sup>2</sup>		
	1 x Baler + 2 x Bales* (Cardboard)	2.61m <sup>2</sup>		
Retail Waste Room (Ground)	4 x 1,100L Bins (Garbage, Recycling)	5.32m <sup>2</sup>	6.61m <sup>2</sup>	17.00m <sup>2</sup>
	3 x 240L Bin (Food Organics, Glass)	1.29 m <sup>2</sup>		
<b>TOTAL</b>		<b>14.19m<sup>2</sup></b>	<b>14.19m<sup>2</sup></b>	<b>37.00m<sup>2</sup></b>

\* Note: 2x bales stored outside of baler, 1x baler stored within baler during normal operating conditions. Bale to be removed from baler immediately prior to collection.

## 5.5 WASTE COLLECTION METHODOLOGY

Commercial bins will be collected by a private contractor as outlined in Table 18.

**Table 18 Commercial Bin Collection Summary**

Waste Stream	Equipment for Collection		Collection Frequency	Collection Operator
	Supermarket	Retail		
Garbage	3 x 1,100L bins	2 x 1,100L bins	3 x per week	Private Contractor
Recycling	-	2 x 1,100L bins	2 x per week	Private Contractor
Cardboard	3 x bales	-	3 x per week	Private Contractor
Food Organics	1 x 660L bin	2 x 240L bins	3 x per week	Private Contractor
Glass	-	1 x 240L bin	2 x per week	Private Contractor

Collections will be undertaken onsite from the ground level loading dock via an MRV sized waste collection vehicle (8.8 metre length, 4.0 metre height clear required) or smaller. Collection vehicles will enter and exit the loading dock in a forward direction via the Neerim Road crossover (refer Appendix A for swept path diagrams).

The collection vehicle will prop within the loading dock adjacent to the commercial waste rooms, with vehicle operators collecting bins directly from the waste rooms and return them immediately upon emptying (see Appendix A). Bins will not be stored outside of the title boundary or presented to kerb for collection at any time.

Building management will ensure sufficient access is provided for collection vehicle operators during collection times. Typically, operators are provided with keypad/swipe card access to the service doors.

# 6 ADDITIONAL INFORMATION

## 6.1 STANDARDS & COMPLIANCE

### 6.1.1 VENTILATION

Ventilation will be provided in accordance with Australian Standard AS1668.

### 6.1.2 WASHING AND VERMIN PROTECTION

A third party bin washing service is to be engaged to perform this service. Bin washing suppliers must retain all waste water to within their washing apparatus and not impact on the drainage provisions of the site.

### 6.1.3 NOISE REDUCTION

All waste areas shall meet BCA and AS2107 acoustic requirements as appropriate with operational hours and collection times assigned to minimise acoustic impact on surrounding premises.

## 6.2 BIN COLOUR AND SUPPLIER

All bins will be provided by private supplier. The below bin colours are specified by Australian Standard AS4123.7 2006, however these are only recommendations and are not mandatory:

- Garbage (general waste) bins shall have red lids with dark green or black body.
- Recycle bins shall have yellow lids with dark green or black body.
- Food organics bins shall have light green lids with dark green or black body.
- Glass bins shall have yellow lids with nature green body.
- E-waste bins shall have white lids with dark green or black body

Charity waste bins are not specified within AS4123.7, however they typically have a white lid with a white body.

Private collection contractors often provide their own bins for collection.

## 6.3 SIGNAGE

Waste storage areas, bins and chutes will be clearly marked and signed with the industry standard signage approved by Sustainability Victoria (such as that illustrated in Figure 1 below) or equivalent.

Users (residents, commercial staff, cleaners) will be instructed by building management to adhere to these requirements.

Figure 1 Sustainability Victoria Waste Signage



## 6.4 HIGH LEVEL PURCHASING SCHEDULE

Table 19 lists the waste equipment required for the residential component of the development under the conditions proposed within this report. A complimentary list of suppliers is provided for convenience.

**Table 19 Equipment Supply Schedule**

Item	Supplier	Typical Services Requirement(s)**	Quantity / Notes
1100L Bin	Private Supplier* (SULO or equivalent)	nil	<u>Residential Bins:</u> 4 No. Garbage 6 No. Recycling  <u>Supermarket Bins:</u> 3 No. Garbage  <u>Retail Bins:</u> 2 No. Garbage 2 No. Recycling
660L Bin	Private Supplier* (SULO or equivalent)	nil	<u>Supermarket Bins:</u> 1 No. Food Organics
240L Bin	Private Supplier* (SULO or equivalent)	nil	<u>Residential Bins:</u> 10 No. Food Organics 4 No. Glass  <u>Retail Bins</u> 2 No. Food Organics 1 No. Glass
Dual Waste Chutes	Private Supplier (Wastech or equivalent)	<b>Power (per unit):</b> 2 x 240V 10A Power (at roof for ventilation fan)	2 No. Dual Chute Systems (4 chutes total)
Baler	Private Supplier (Wastech or equivalent)	<b>Power (per unit):</b> 240V 10A Power	B5W Bramidan or equivalent
*Private waste collection contractors often supply their own bins for collection. **Services requirements are indicative only and must be confirmed with the manufacture prior to commencement of construction			

## 6.5 SUPPLIER CONTACT INFORMATION

A complimentary listing of contractors and equipment suppliers is provided in Table 20 below for your reference. You are not obligated to procure goods/services from these companies. This is not, nor is it intended to be, a complete list of available suppliers. WSP does not warrant (or make representations for) the goods/services provided by these suppliers.

**Table 20 Supplier Contact List**

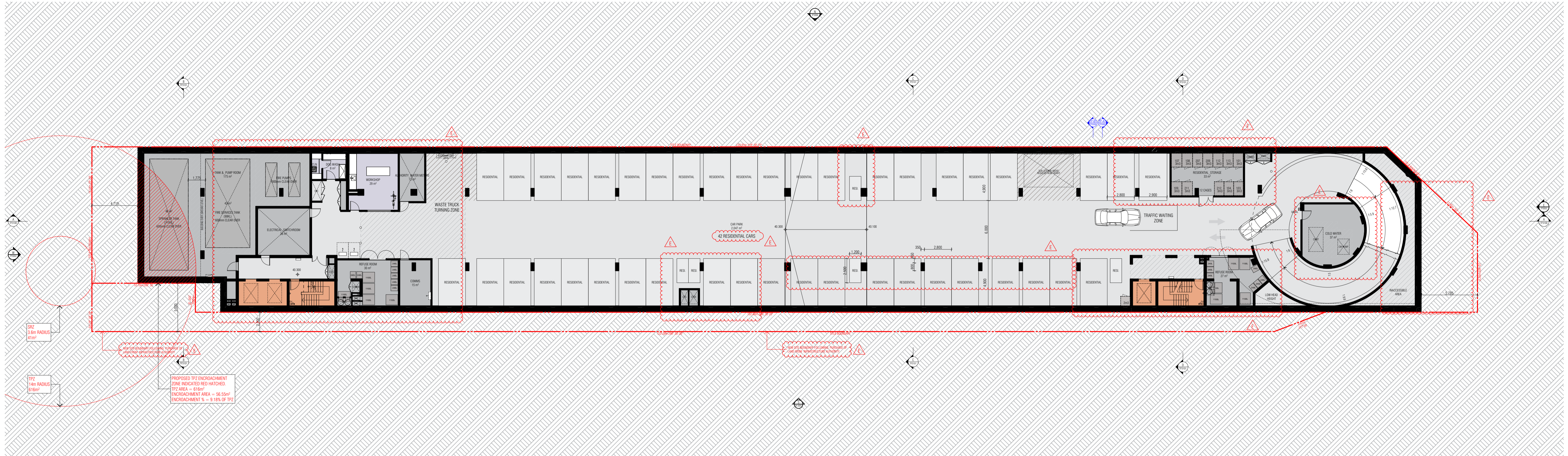
Service Type	Contractor / Supplier Name	Phone	Website
Private Waste Collectors	Citywide Service Solutions	(03) 9261 5000	<a href="http://www.citywide.com.au">www.citywide.com.au</a>
	SUEZ Environment	13 13 35	<a href="http://www.sita.com.au">www.sita.com.au</a>
	Cleanaway	13 13 39	<a href="http://www.cleanaway.com.au">www.cleanaway.com.au</a>
	Veolia	132 955	<a href="http://www.veolia.com">www.veolia.com</a>
Equipment Suppliers	Wastech Engineering (Chutes, Balers)	(03) 8787 1600	<a href="http://www.wastech.com.au">www.wastech.com.au</a>
	ASI JD MacDonald (Chutes, Balers)	(03) 8558 7200	<a href="http://www.jdmacdonald.com.au">www.jdmacdonald.com.au</a>
	Sulo Australia (Bins)	1300 364 388	<a href="http://www.sulo.com.au">www.sulo.com.au</a>
Bin Washing Services	The Bin Butlers	1300 788 123	<a href="http://www.thebinbutlers.com.au">www.thebinbutlers.com.au</a>
	Kerbside Clean-A-Bin	(03) 9830 7381	<a href="http://www.kerbsidecleanabin-srp.com.au">www.kerbsidecleanabin-srp.com.au</a>
	Calcorp Services	1800 225 267	<a href="http://www.calcorpservices.com.au">www.calcorpservices.com.au</a>
	WBCM Environmental Australia	1300 800 621	<a href="http://www.wbcm-aust.com.au">www.wbcm-aust.com.au</a>
E-waste Collection Services	TechCollect	1300 229 837	<a href="http://www.techcollect.com.au">www.techcollect.com.au</a>
	Mobile Muster (Mobile Phones)	1800 249 113	<a href="http://www.mobilemuster.com.au">www.mobilemuster.com.au</a>
	ToxFree (Secure E-waste Destruction)	1300 869 373	<a href="http://www.toxfree.com.au">www.toxfree.com.au</a>

# APPENDIX A

SCALED WASTE ROOM  
DRAWINGS



DEVELOPMENT TO BE IN ACCORDANCE WITH ENDORSED SUSTAINABILITY MANAGEMENT PLAN, FACADE STRATEGY, LANDSCAPE PLAN, CAR PARKING AND TRAFFIC MANAGEMENT PLAN, WASTE MANAGEMENT PLAN AND ACOUSTIC REPORT.  
REFER TO ACOUSTIC REPORT FOR NOISE ATTENUATION MEASURES



SIGNIFICANT TREE  
 TREE PROTECTION ZONE  
 ENCROACHMENT (≤10%)

REVISION	DATE	REVISION	DATE
A	1/12/2023		
B	19/07/2024		
C	27/08/2024		
D	16/12/2024		
E	5/02/2026		

THIS DRAWING SHOULD BE READ IN CONJUNCTION WITH ALL RELEVANT CONTRACTS, SPECIFICATIONS, SCHEDULES AND DRAWINGS. DIMENSIONS ARE IN MILLIMETRES AND LEVELS ARE IN METRES. DO NOT SCALE OFF DRAWINGS. USE FIGURED DIMENSIONS ONLY. CHECK AND VERIFY ALL DIMENSIONS ON SITE PRIOR TO COMMENCING WORK. CONTRACTOR TO NOTIFY ARCHITECT OF ANY DISCREPANCY IN DOCUMENTATION AND WAIT FOR INSTRUCTION PRIOR TO CONTINUING WITH WORK. BUILDING CONTRACTOR TO COORDINATE ALL SERVICES IN ACCORDANCE WITH SERVICES DOCUMENTATION AND CHECK PENETRATION POSITIONS PRIOR TO COMMENCEMENT OF WORK. ALL SHOP DRAWINGS ARE TO BE SUBMITTED TO THE ARCHITECT FOR APPROVAL AND MANUFACTURE SHALL NOT COMMENCE PRIOR TO THE RETURN OF THE DRAWINGS SIGNED BY THE ARCHITECT AND RELEVANT CONSULTANT. BUILDING TO BE SET OUT BY LICENSED LAND SURVEYOR WITH TITLE REESTABLISHMENT TO BE CARRIED OUT AT THE TIME OF SETOUT.

ALL RIGHTS RESERVED. THIS WORK IS COPYRIGHT AND CAN NOT BE REPRODUCED IN ANY FORM OR BY ANY MEANS (GRAPHIC, ELECTRONIC OR PHOTOCOPIING) WITHOUT THE WRITTEN PERMISSION OF FIELDWORK PTY LTD. ANY LICENCE, EXPRESSED OR IMPLIED TO USE THIS DOCUMENT FOR ANY PURPOSE WHATSOEVER IS RESTRICTED TO THE TERMS OF THE AGREEMENT OR IMPLIED AGREEMENT BETWEEN FIELDWORK PTY LTD AND THE INSTRUCTING PARTY.

IF THIS DRAWING IS "WORK IN PROGRESS" THEN IT IS TO BE CONSIDERED AS A DRAFT. SUBJECT TO REVISION WITHOUT NOTICE.

**FIELDWORK**

FIELDWORK PROJECTS PTY. LTD.  
 150 LANGRIDGE STREET COLLINGWOOD VICTORIA 3066 AUSTRALIA  
 ABN 27 162 632 939 ACN 162 632 939  
 T +61 3 9081 2401 E hello@fieldworkprojects.com.au

Project Number  
 230022  
 Client  
**MAKE.**  
 Project Name  
 467-473 Neerim Rd Murrumbena  
 Site Address  
 467-473 NEERIM ROAD MURRUMBENA VIC 3163 AUSTRALIA

Drawing Name  
**BASEMENT 01 FLOOR PLAN**  
 Date  
 5/02/2026  
 Status  
 TOWN PLANNING

Scale  
 1:200 @ A1  
 Drawing Number  
**TP2101**  
 Revision  
**E**

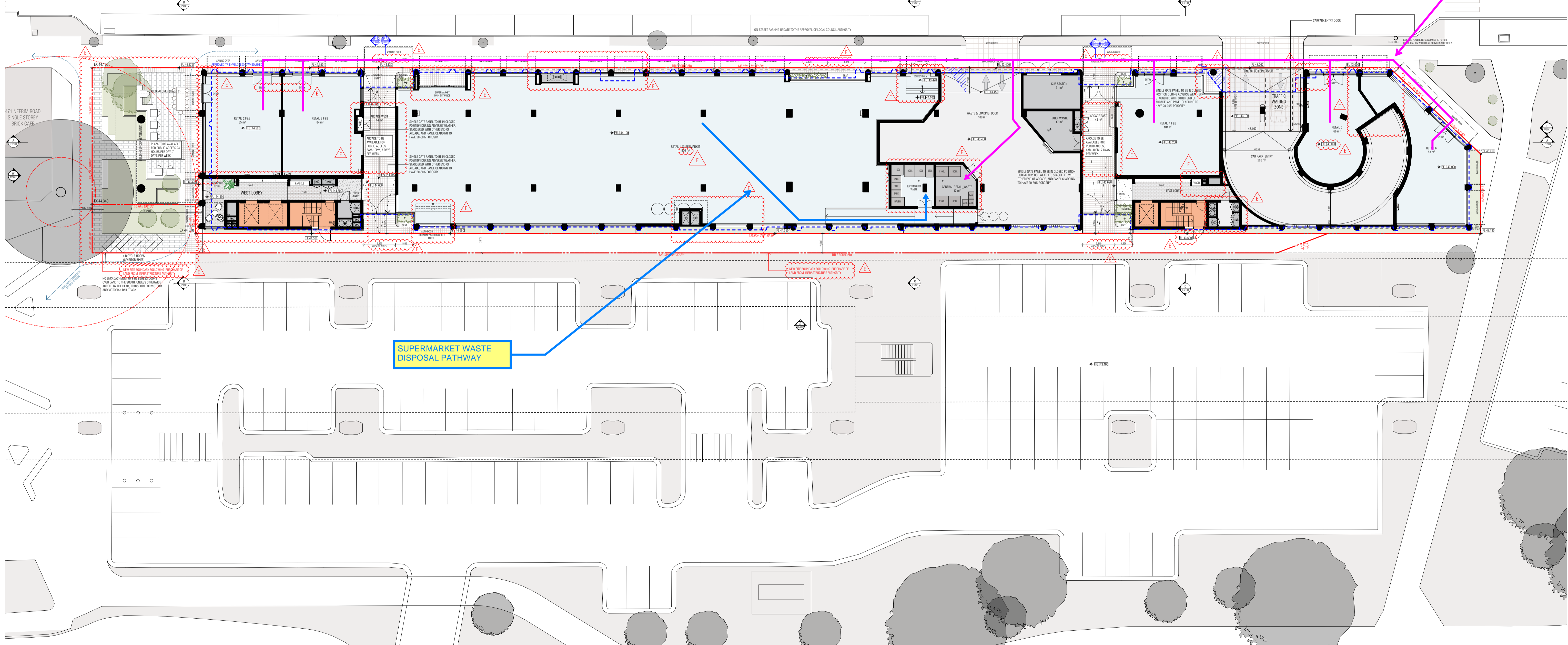
DEVELOPMENT TO BE IN ACCORDANCE WITH ENDORSED SUSTAINABILITY MANAGEMENT PLAN, FACADE STRATEGY, LANDSCAPE PLAN, CAR PARKING AND TRAFFIC MANAGEMENT PLAN, WASTE MANAGEMENT PLAN AND ACOUSTIC REPORT.  
REFER TO ACOUSTIC REPORT FOR NOISE ATTENUATION MEASURES



NEERIM ROAD

RETAIL WASTE DISPOSAL PATHWAYS

SUPERMARKET WASTE DISPOSAL PATHWAY



REVISION	DATE	REVISION	DATE
A	1/12/2023		
B	19/07/2024		
C	21/08/2024		
D	16/12/2024		
E	5/02/2026		

THIS DRAWING SHOULD BE READ IN CONJUNCTION WITH ALL RELEVANT CONTRACTS, SPECIFICATIONS, SCHEDULES AND DRAWINGS. DIMENSIONS ARE IN MILLIMETRES AND LEVELS ARE IN METRES. DO NOT SCALE OFF DRAWINGS. USE FIGURED DIMENSIONS ONLY. CHECK AND VERIFY ALL DIMENSIONS ON SITE PRIOR TO COMMENCING WORK. CONTRACTOR TO NOTIFY ARCHITECT OF ANY DISCREPANCY IN DOCUMENTATION AND WAIT FOR INSTRUCTION PRIOR TO CONTINUING WITH WORK. BUILDING CONTRACTOR TO COORDINATE ALL SERVICES IN ACCORDANCE WITH SERVICES DOCUMENTATION AND CHECK PENETRATION POSITIONS PRIOR TO COMMENCEMENT OF WORK. ALL SHOP DRAWINGS ARE TO BE SUBMITTED TO THE ARCHITECT FOR APPROVAL AND MANUFACTURE SHALL NOT COMMENCE PRIOR TO THE RETURN OF THE DRAWINGS SIGNED BY THE ARCHITECT AND RELEVANT CONSULTANT. BUILDING TO BE SET OUT BY LICENSED LAND SURVEYOR WITH TITLE REESTABLISHMENT TO BE CARRIED OUT AT THE TIME OF SETOUT.

ALL RIGHTS RESERVED. THIS WORK IS COPYRIGHT AND CAN NOT BE REPRODUCED IN ANY FORM OR BY ANY MEANS (GRAPHIC, ELECTRONIC OR PHOTOGRAPHIC) WITHOUT THE WRITTEN PERMISSION OF FIELDWORK PTY LTD. ANY LICENCE, EXPRESSED OR IMPLIED TO USE THIS DOCUMENT FOR ANY PURPOSE WHATSOEVER IS RESTRICTED TO THE TERMS OF THE AGREEMENT OR IMPLIED AGREEMENT BETWEEN FIELDWORK PTY LTD AND THE INSTRUCTING PARTY.

IF THIS DRAWING IS "WORK IN PROGRESS" THEN IT IS TO BE CONSIDERED AS A DRAFT. SUBJECT TO REVISION WITHOUT NOTICE.

**FIELDWORK**

FIELDWORK PROJECTS PTY. LTD.  
150 LANGRIDGE STREET COLLINGWOOD VICTORIA 3066 AUSTRALIA  
ABN 27 162 632 939 ACN 162 632 939  
T +61 3 9081 2401 E hello@fieldworkprojects.com.au

Project Number  
230022

Client  
**MAKE.**

Project Name  
467-473 Neerim Rd Murrumbena

Site Address  
467-473 NEERIM ROAD MURRUMBENA VIC 3163 AUSTRALIA

Drawing Name  
**GROUND FLOORPLAN**

Date  
5/02/2026

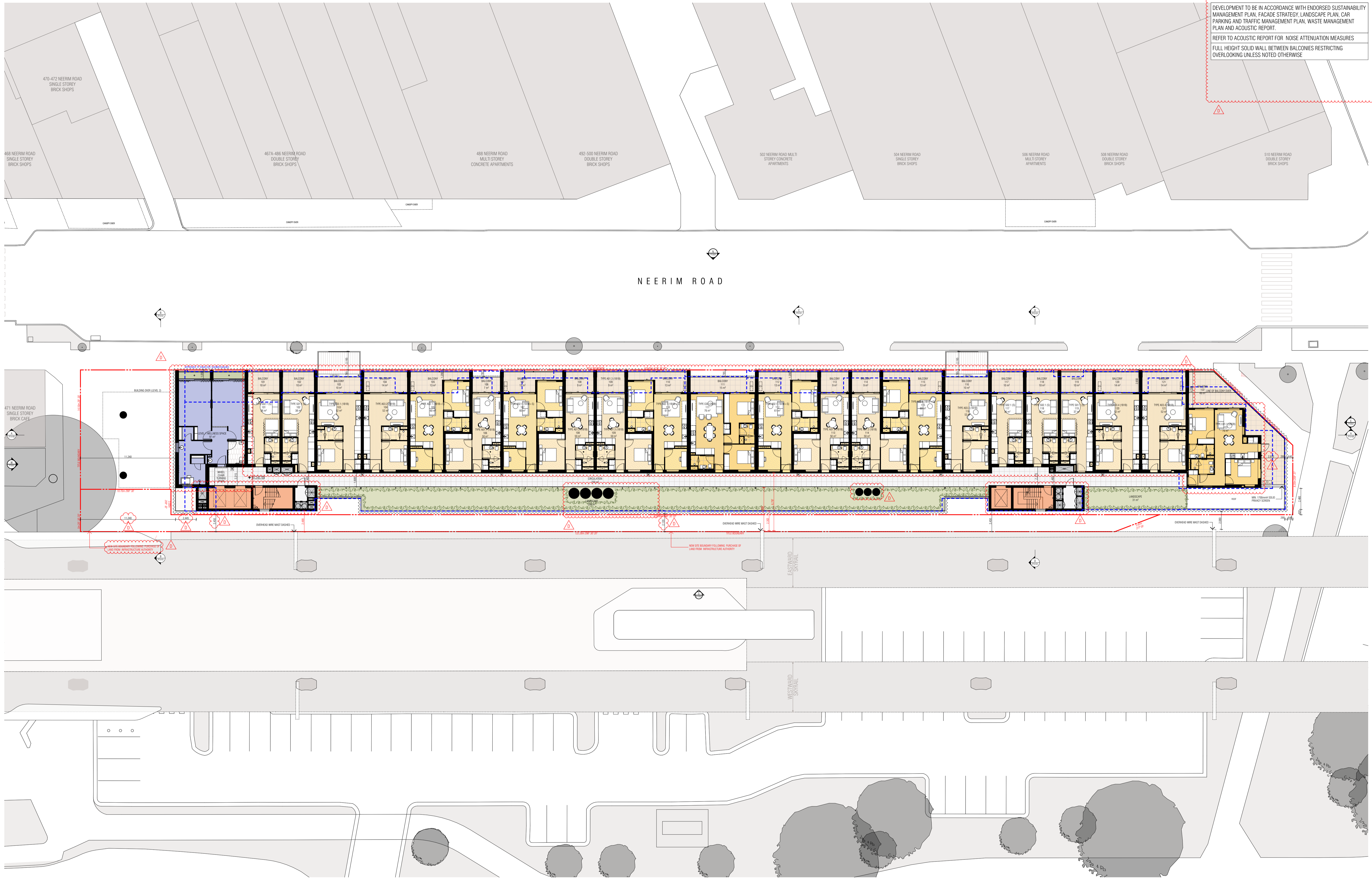
Status  
TOWN PLANNING

Scale  
1:200 @ A1

Drawing Number  
**TP2102**

Revision  
**E**

DEVELOPMENT TO BE IN ACCORDANCE WITH ENDORSED SUSTAINABILITY MANAGEMENT PLAN, FACADE STRATEGY, LANDSCAPE PLAN, CAR PARKING AND TRAFFIC MANAGEMENT PLAN, WASTE MANAGEMENT PLAN AND ACOUSTIC REPORT.  
 REFER TO ACOUSTIC REPORT FOR NOISE ATTENUATION MEASURES  
 FULL HEIGHT SOLID WALL BETWEEN BALCONIES RESTRICTING OVERLOOKING UNLESS NOTED OTHERWISE



REVISION	DATE	REVISION	DATE
A	1/12/2023		
B	19/07/2024		
C	21/08/2024		
D	5/02/2026		

THIS DRAWING SHOULD BE READ IN CONJUNCTION WITH ALL RELEVANT CONTRACTS, SPECIFICATIONS, SCHEDULES AND DRAWINGS. DIMENSIONS ARE IN MILLIMETRES AND LEVELS ARE IN METRES. DO NOT SCALE OFF DRAWINGS. USE FIGURED DIMENSIONS ONLY. CHECK AND VERIFY ALL DIMENSIONS ON SITE PRIOR TO COMMENCING WORK. CONTRACTOR TO NOTIFY ARCHITECT OF ANY DISCREPANCY IN DOCUMENTATION AND WAIT FOR INSTRUCTION PRIOR TO CONTINUING WITH WORK. BUILDING CONTRACTOR TO COORDINATE ALL SERVICES IN ACCORDANCE WITH SERVICES DOCUMENTATION AND CHECK PENETRATION POSITIONS PRIOR TO COMMENCEMENT OF WORK. ALL SHOP DRAWINGS ARE TO BE SUBMITTED TO THE ARCHITECT FOR APPROVAL AND MANUFACTURE SHALL NOT COMMENCE PRIOR TO THE RETURN OF THE DRAWINGS SIGNED BY THE ARCHITECT AND RELEVANT CONSULTANT. BUILDING TO BE SET OUT BY LICENSED LAND SURVEYOR WITH TITLE REESTABLISHMENT TO BE CARRIED OUT AT THE TIME OF SETOUT.

ALL RIGHTS RESERVED. THIS WORK IS COPYRIGHT AND CAN NOT BE REPRODUCED IN ANY FORM OR BY ANY MEANS (GRAPHIC, ELECTRONIC OR PHOTOCOPIING) WITHOUT THE WRITTEN PERMISSION OF FIELDWORK PTY LTD. ANY LICENCE, EXPRESSED OR IMPLIED TO USE THIS DOCUMENT FOR ANY PURPOSE WHATSOEVER IS RESTRICTED TO THE TERMS OF THE AGREEMENT OR IMPLIED AGREEMENT BETWEEN FIELDWORK PTY LTD AND THE INSTRUCTING PARTY.

IF THIS DRAWING IS "WORK IN PROGRESS" THEN IT IS TO BE CONSIDERED AS A DRAFT. SUBJECT TO REVISION WITHOUT NOTICE.

# FIELDWORK

FIELDWORK PROJECTS PTY. LTD.  
 150 LANGRIDGE STREET COLLINGWOOD VICTORIA 3066 AUSTRALIA  
 ABN 27 162 632 939 ACN 162 632 939  
 T +61 3 9081 2401 E hello@fieldworkprojects.com.au

Project Number  
 230022  
 Client  
**MAKE.**  
 Project Name  
 467-473 Neerim Rd Murrumbidgee  
 Site Address  
 467-473 NEERIM ROAD MURRUMBIDGEE VIC 3163 AUSTRALIA

Drawing Name  
**LEVEL 01 FLOOR PLAN**  
 Date  
 5/02/2026  
 Status  
 TOWN PLANNING

Scale  
 1:200 @ A1  
 Drawing Number  
**TP2103**  
 Revision  
**D**

DEVELOPMENT TO BE IN ACCORDANCE WITH ENDORSED SUSTAINABILITY MANAGEMENT PLAN, FACADE STRATEGY, LANDSCAPE PLAN, CAR PARKING AND TRAFFIC MANAGEMENT PLAN, WASTE MANAGEMENT PLAN AND ACOUSTIC REPORT.  
 REFER TO ACOUSTIC REPORT FOR NOISE ATTENUATION MEASURES  
 FULL HEIGHT SOLID WALL BETWEEN BALCONIES RESTRICTING OVERLOOKING UNLESS NOTED OTHERWISE



REVISION	DATE	REVISION	DATE
A	1/12/2023		
B	19/07/2024		
C	21/08/2024		
D	5/02/2026		

THIS DRAWING SHOULD BE READ IN CONJUNCTION WITH ALL RELEVANT CONTRACTS, SPECIFICATIONS, SCHEDULES AND DRAWINGS. DIMENSIONS ARE IN MILLIMETRES AND LEVELS ARE IN METRES. DO NOT SCALE OFF DRAWINGS. USE FIGURED DIMENSIONS ONLY. CHECK AND VERIFY ALL DIMENSIONS ON SITE PRIOR TO COMMENCING WORK. CONTRACTOR TO NOTIFY ARCHITECT OF ANY DISCREPANCY IN DOCUMENTATION AND WAIT FOR INSTRUCTION PRIOR TO CONTINUING WITH WORK. BUILDING CONTRACTOR TO COORDINATE ALL SERVICES IN ACCORDANCE WITH SERVICES DOCUMENTATION AND CHECK PENETRATION POSITIONS PRIOR TO COMMENCEMENT OF WORK. ALL SHOP DRAWINGS ARE TO BE SUBMITTED TO THE ARCHITECT FOR APPROVAL AND MANUFACTURE SHALL NOT COMMENCE PRIOR TO THE RETURN OF THE DRAWINGS SIGNED BY THE ARCHITECT AND RELEVANT CONSULTANT. BUILDING TO BE SET OUT BY LICENSED LAND SURVEYOR WITH TITLE REESTABLISHMENT TO BE CARRIED OUT AT THE TIME OF SETOUT.

ALL RIGHTS RESERVED. THIS WORK IS COPYRIGHT AND CAN NOT BE REPRODUCED IN ANY FORM OR BY ANY MEANS (GRAPHIC, ELECTRONIC OR PHOTOCOPIING) WITHOUT THE WRITTEN PERMISSION OF FIELDWORK PTY LTD. ANY LICENCE, EXPRESSED OR IMPLIED TO USE THIS DOCUMENT FOR ANY PURPOSE WHATSOEVER IS RESTRICTED TO THE TERMS OF THE AGREEMENT OR IMPLIED AGREEMENT BETWEEN FIELDWORK PTY LTD AND THE INSTRUCTING PARTY.

IF THIS DRAWING IS "WORK IN PROGRESS" THEN IT IS TO BE CONSIDERED AS A DRAFT. SUBJECT TO REVISION WITHOUT NOTICE.

**FIELDWORK**

FIELDWORK PROJECTS PTY. LTD.  
 150 LANGRIDGE STREET COLLINGWOOD VICTORIA 3066 AUSTRALIA  
 ABN 27 162 632 939 ACN 162 632 939  
 T +61 3 9081 2401 E hello@fieldworkprojects.com.au

Project Number  
**230022**

Client  
**MAKE.**

Project Name  
**467-473 Neerim Rd Murrumbidgee**

Site Address  
**467-473 NEERIM ROAD MURRUMBIDGEE VIC 3163 AUSTRALIA**

Drawing Name  
**LEVEL 02 FLOOR PLAN**

Scale  
**1:200 @ A1**

Date  
**5/02/2026**

Status  
**TOWN PLANNING**

Drawing Number  
**TP2104**

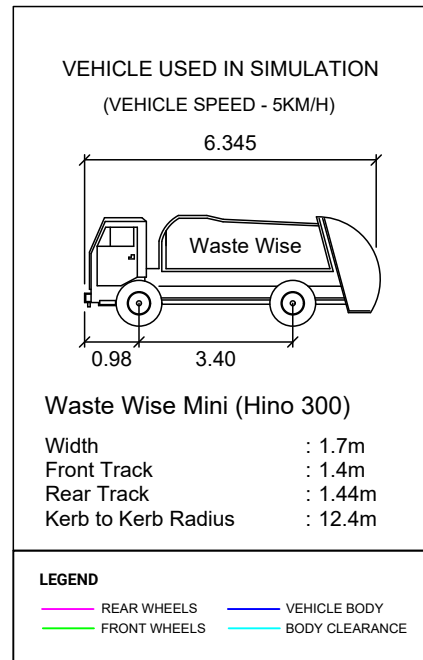
Revision  
**D**

# APPENDIX B

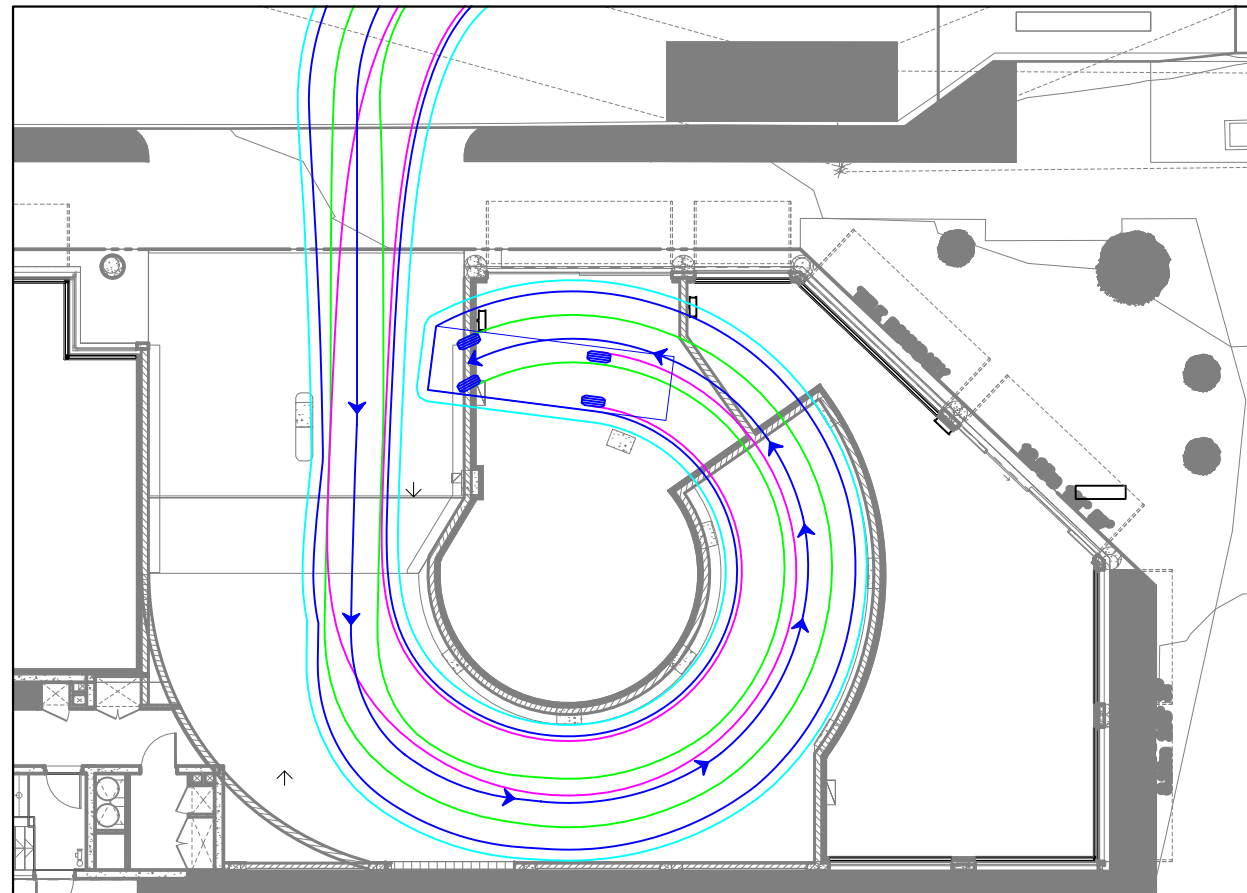
## SWEPT PATH DIAGRAMS



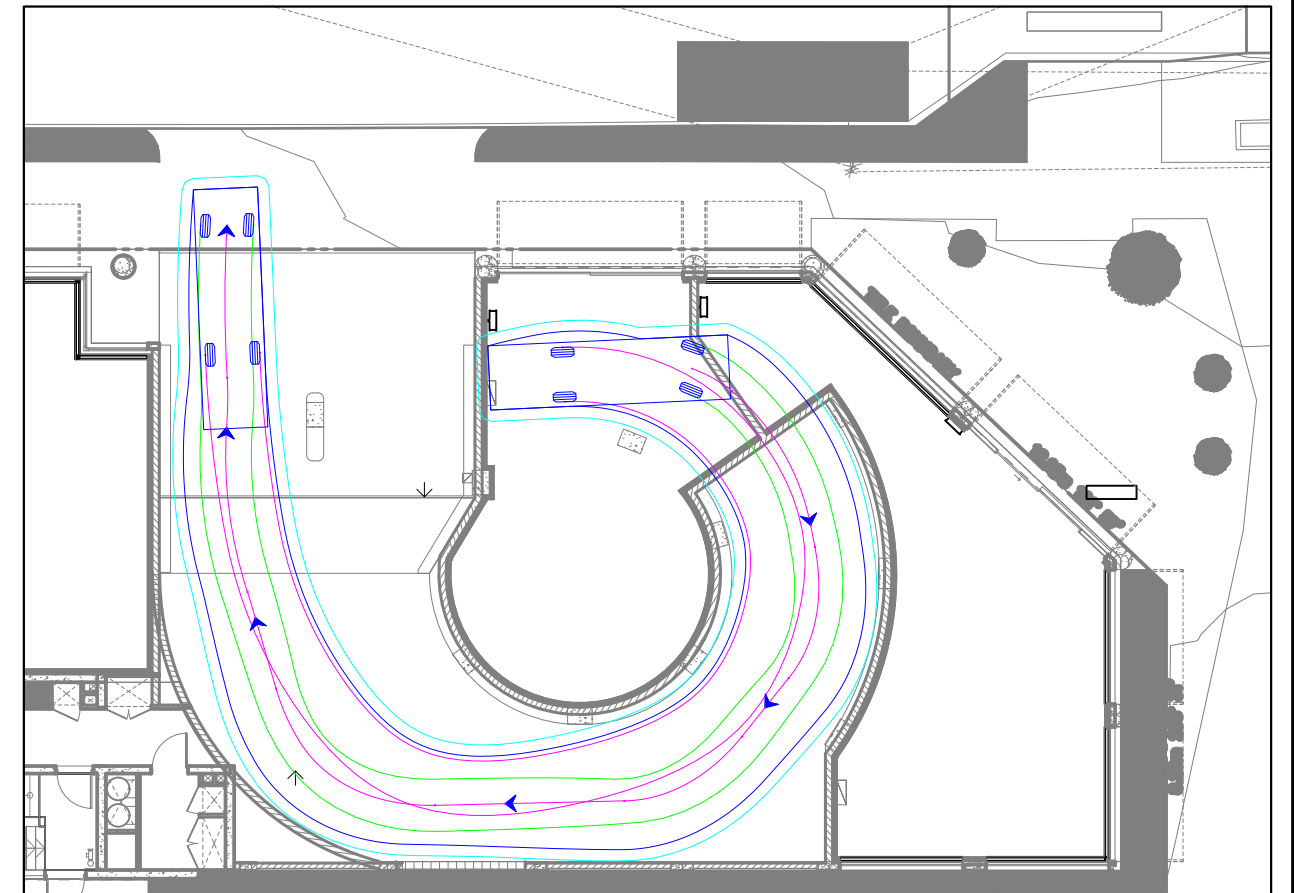
VEHICLE PROFILE



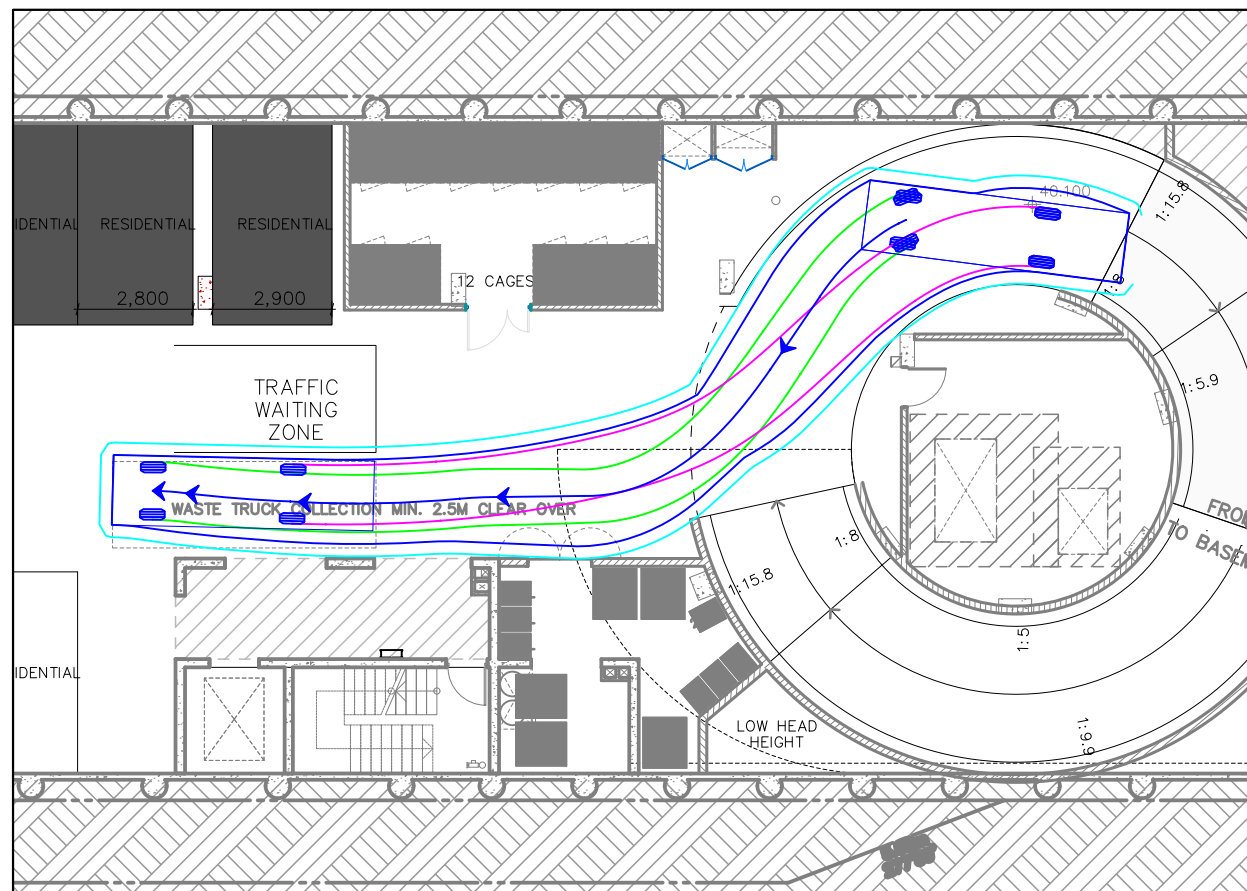
WASTE TRUCK - SITE ACCESS INGRESS



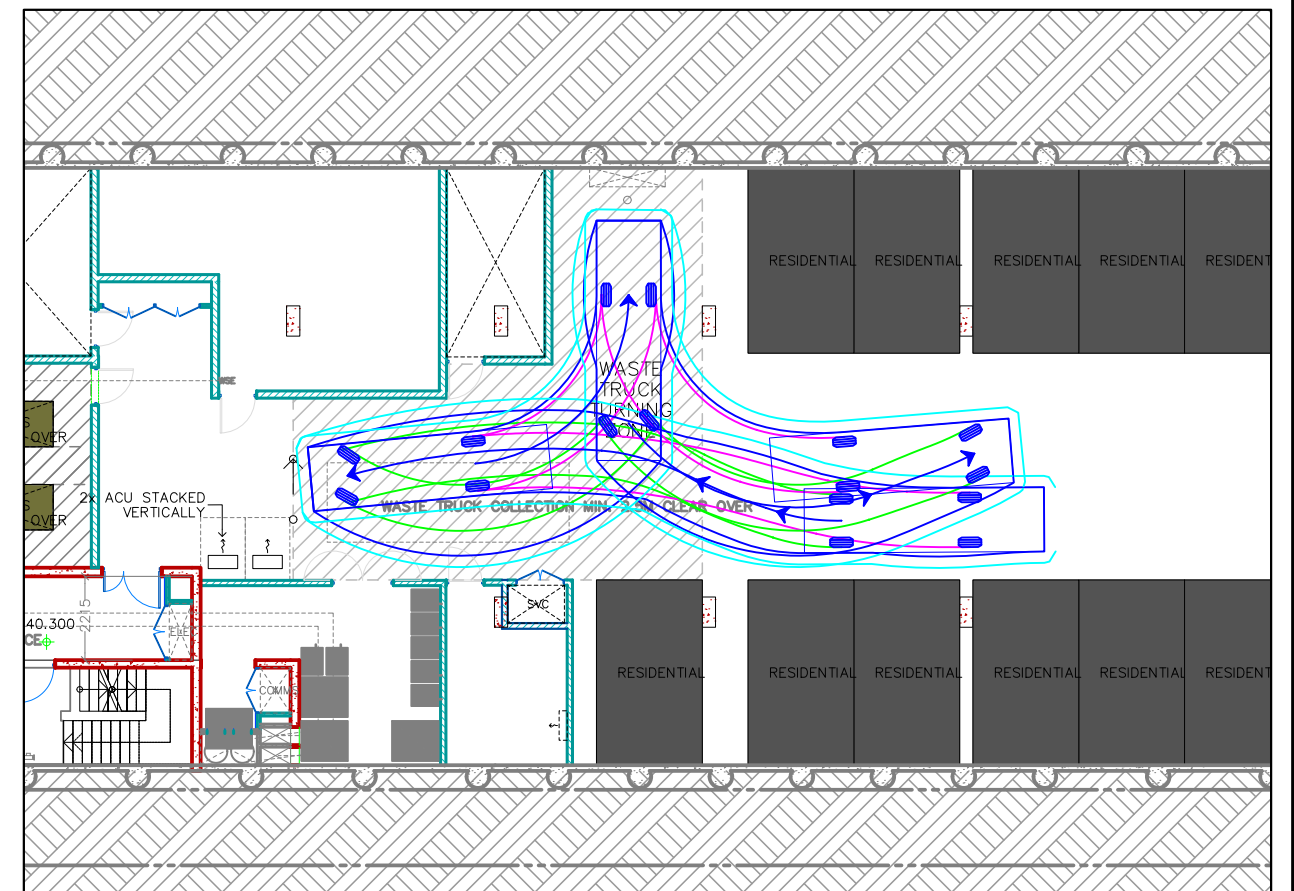
WASTE TRUCK - SITE ACCESS EGRESS



WASTE TRUCK - INTERNAL CIRCULATION - INGRESS



WASTE TRUCK - INTERNAL CIRCULATION BASEMENT 1 - TURNING ZONE



REV	DATE	NOTES	DESIGNED BY	CHECKED BY
A	28/11/2023	TP APPLICATION	T. AMANATIDIS (RPE 11292)	B. CHISHOLM (REP 7582)
B	30/07/2024	TP APPLICATION	T. AMANATIDIS (RPE 11292)	B. CHISHOLM (REP 7582)
C	25/09/2025	TP AMENDMENT	D. DURAIRAJ	B. CHISHOLM (REP 7582)

**467-476 NEERIM ROAD, MURRUMBEENA**  
PROPOSED MIXED USE DEVELOPMENT

GENERAL NOTES:  
BASE PLANS BY FIELDWORK, RECEIVED  
SEPTEMBER 2025.

FILE NAME: G28549-02  
SHEET NO.: 02



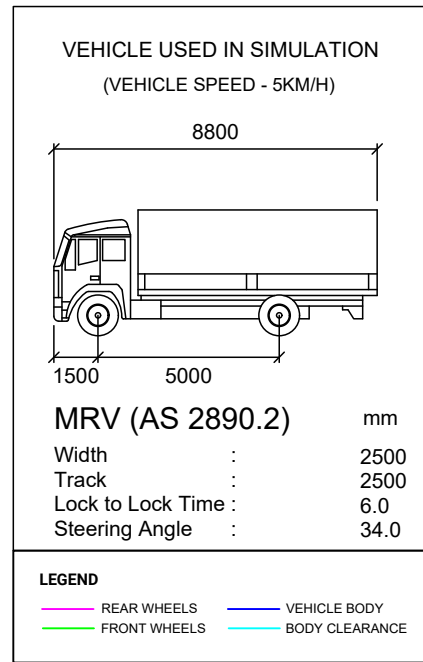
SCALE: 1:200 (A3)

COPYRIGHT: The ideas and material contained in this document are the property of Traffic Group (Traffic Group Pty Ltd - ABN 32 100 481 570). Use or copying of this document in whole or in part without the written permission of Traffic Group constitutes an infringement of copyright.

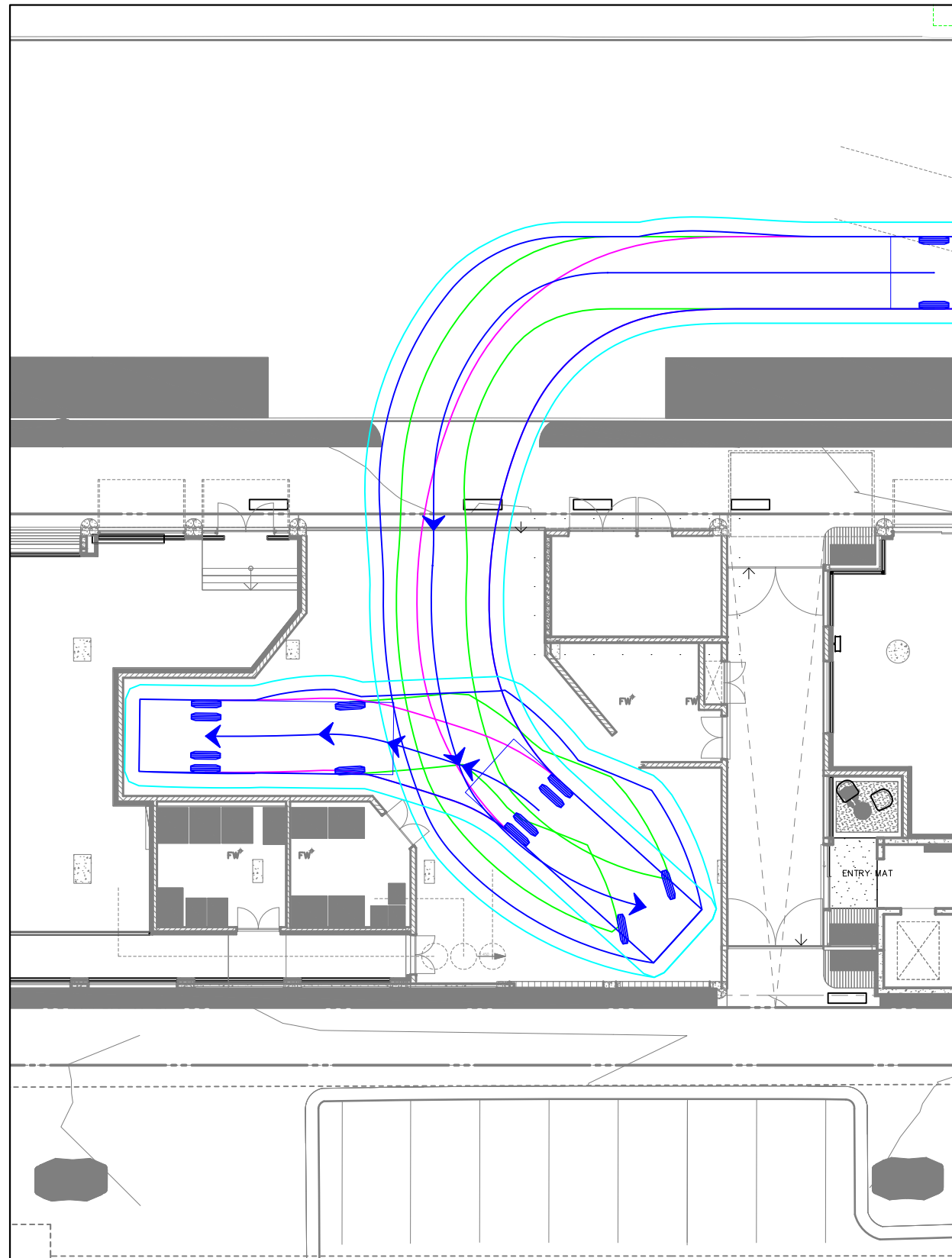
**Traffic Group**

Level 28, 459 Collins St, MELBOURNE VIC 3000  
T: (03) 9822 2888  
www.trafficgroup.com.au

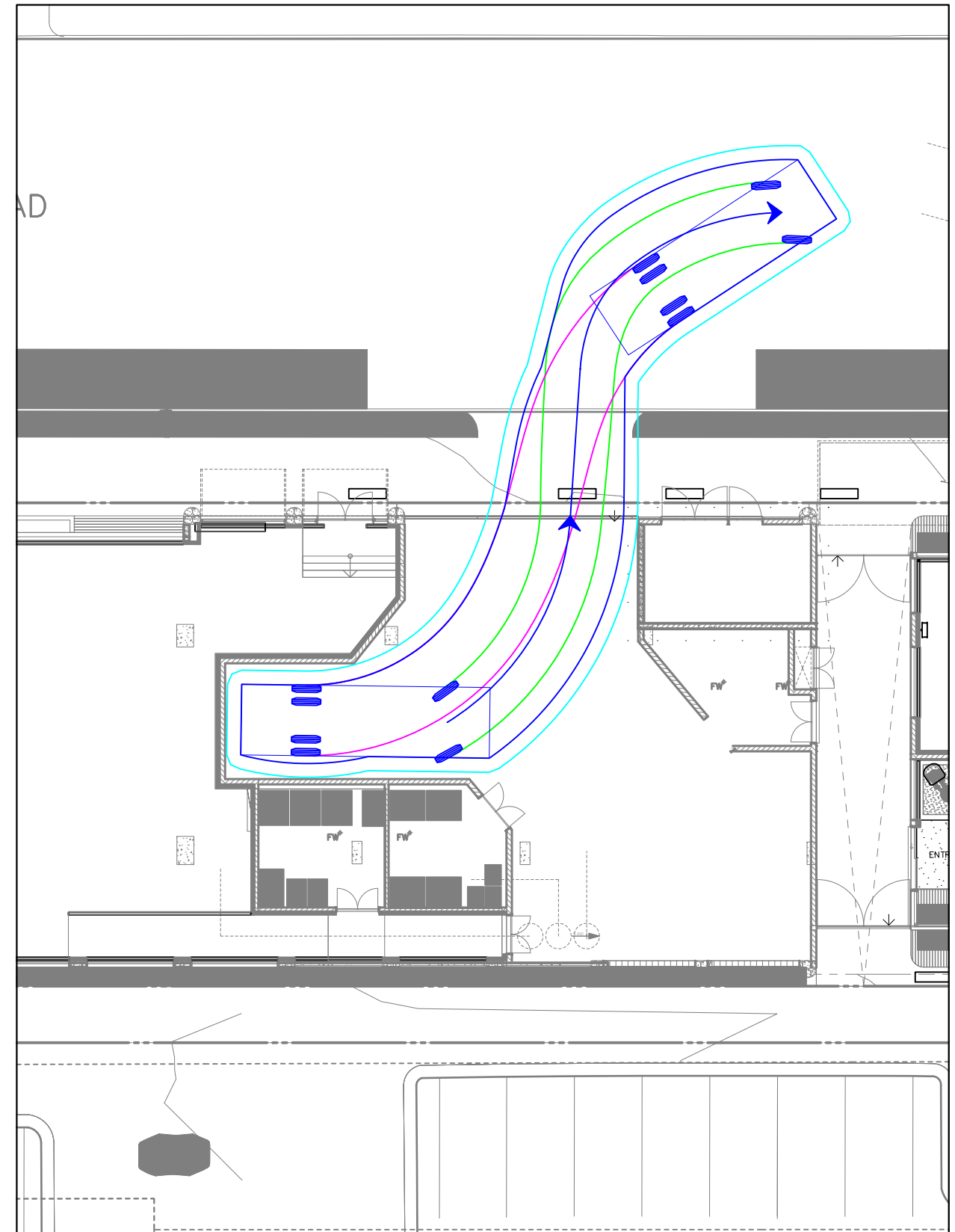
VEHICLE PROFILE



LOADING TRUCK - SITE ACCESS INGRESS



LOADING TRUCK - SITE ACCESS EGRESS



REV	DATE	NOTES	DESIGNED BY	CHECKED BY
A	28/11/2023	TP APPLICATION	T. AMANATIDIS (RPE 11292)	B. CHISHOLM (REP 7582)
B	30/07/2024	TP APPLICATION	T. AMANATIDIS (RPE 11292)	B. CHISHOLM (REP 7582)
C	25/09/2025	TP AMENDMENT	D. DURAIRAJ	B. CHISHOLM (REP 7582)

**467-476 NEERIM ROAD, MURRUMBEENA**  
PROPOSED MIXED USE DEVELOPMENT

GENERAL NOTES:  
BASE PLANS BY FIELDWORK, RECEIVED  
SEPTEMBER 2025.

FILE NAME: G28549-02  
SHEET NO.: 03



SCALE: 1:200 (A3)

COPYRIGHT: The ideas and material contained in this document are the property of Traffic Group (Traffic Group Pty Ltd - ABN 32 100 481 570). Use or copying of this document in whole or in part without the written permission of Traffic Group constitutes an infringement of copyright.

**Traffic Group**

Level 28, 459 Collins St, MELBOURNE VIC 3000  
T: (03) 9822 2888  
www.trafficgroup.com.au

# APPENDIX C

SUPERMARKET WASTE  
GENERATION RATES  
REFERENCE



## Sustainability metrics

### WASTE (tonnes)

WSP Note: Cardboard to comprise majority of supermarket waste volume

#### Australia – materials diverted from landfill<sup>1</sup>

	F20	F21	F22
Food waste to composting or energy	48,838	51,323	54,535
Food waste to farmers	33,271	50,751	51,441
Food to charity	8,659	10,000	12,804
Cardboard	237,766	240,062	254,856
Plastic film	8,649	7,127	7,665
Other	13	849	484
<b>Total Australia</b>	<b>337,196</b>	<b>360,112</b>	<b>381,786</b>

<sup>1</sup> F22 data has been estimated based on 12 months from June 21 to May 22.

#### New Zealand – materials diverted from landfill

	F20	F21	F22
Cardboard	32,327	27,245	29,293
Plastic film	1,045	1,725	1,635
Food waste to farmers	1,670	3,995	2,832
Food to charity	1,470	4,087	2,664
Other	4,497	2,397	1,691
<b>Total New Zealand</b>	<b>41,009</b>	<b>39,450</b>	<b>38,115</b>

<b>Total diverted Australia and New Zealand</b>	<b>378,205</b>	<b>399,562</b>	<b>419,901</b>
---	----------------	----------------	----------------

<b>Total waste to landfill Australia and New Zealand</b>	<b>95,219</b>	<b>103,062</b>	<b>94,377</b>
--	---------------	----------------	---------------

#### Waste intensity<sup>1</sup>

WSP Note: Garbage to comprise minority of supermarket waste volume

	F20	F21	F22
kg/m <sup>2</sup>	22	24	24

<sup>1</sup> Waste intensity is from Australian and New Zealand operations measuring waste to landfill against total trading area.

#### Virgin (new) plastic packaging reductions from targeted initiatives<sup>1</sup>

WSP Note: Woolworths waste generation intensity is below that allowed for within the WMP (~105kg/m<sup>2</sup> allowed for in WMP)

	F20	F21	F22
Tonnes removed	2,831	2,066	4,262
% Cumulative removed from baseline	8%	13%	22%

<sup>1</sup> Includes Australian Woolworths supermarkets and Metro Food Stores. Excludes BIG W and Countdown, which will be reported in future years. Analysis is based on products considered 'private label' – including FoodCo and designated produce, meat and in-store bakery products, in addition to in-store packaging such as produce bags. Where historical packaging data is not available, we have estimated packaging specifications based on similar products in the category. A packaging data enhancement project is currently underway and will allow our packaging measures and baseline to be further refined. While not included in our packaging figures, the removal of single use plastic bags resulted in the elimination of over 13,000 tonnes of plastic (over 9,000 tonnes of virgin plastic) from F18 to F19. Cumulative reduction calculated based on equivalent percentage of baseline year virgin plastic packaging with a target of 50% by 2024.



