



LEGEND:

- NATIVE VEGETATION
- PLANTED VEGETATION
- SCATTERED TREES

23/10/2024 1:33:49 PM Default 862-pd-a-ap-10.dgn

ISSUE	APP'D	DATE	AMENDMENT
E			
D			
C			
B			
A			

GENERAL NOTES


NATIVE VEGETATION DATA SOURCED FROM SMEC (2024, V6)
 DETAILED FLORA AND FAUNA ASSESSMENT:
 NORTHERN HIGHWAY AND WANDONG ROAD INTERSECTION

NOT FOR CONSTRUCTION ISSUED 23/10/2024

DESIGNED
ROAD DESIGN

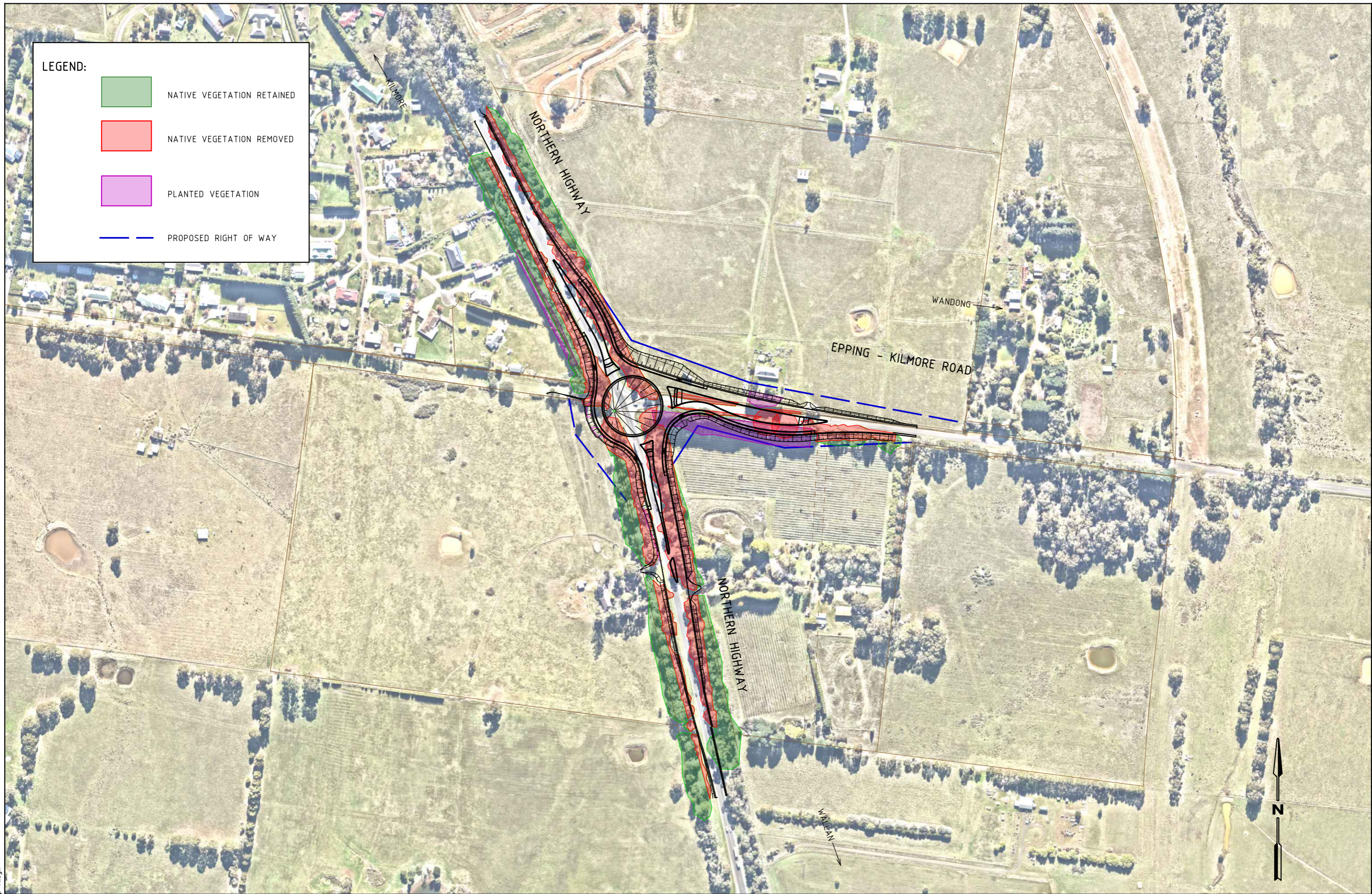
APPROVED

CAT: Road_Design
 PROJ: 862nhekr
 FILE: 862-pd-a-ap-10.dgn



SCALE OF METRES
 HOR 0 35 70
 VER

NORTHERN HWY				
NORTHERN HIGHWAY / EPPING-KILMORE ROAD INTERSECTION				
EXISTING CONDITIONS PLAN				
FILE NO. 862	CONTRACT NO.	SHEET NO. 1	DRAWING NO.	ISSUE



LEGEND:

- NATIVE VEGETATION RETAINED
- NATIVE VEGETATION REMOVED
- PLANTED VEGETATION
- PROPOSED RIGHT OF WAY

23/10/2024 4:23:02 PM Default 862-pd-a-ap-11.dgn

ISSUE	APP'D	DATE	AMENDMENT
E			
D			
C			
B			
A			

GENERAL NOTES


NATIVE VEGETATION DATA SOURCED FROM SMEC (2024, V6)
 DETAILED FLORA AND FAUNA ASSESSMENT:
 NORTHERN HIGHWAY AND WANDONG ROAD INTERSECTION

NOT FOR CONSTRUCTION ISSUED 23/10/2024

DESIGNED
ROAD DESIGN

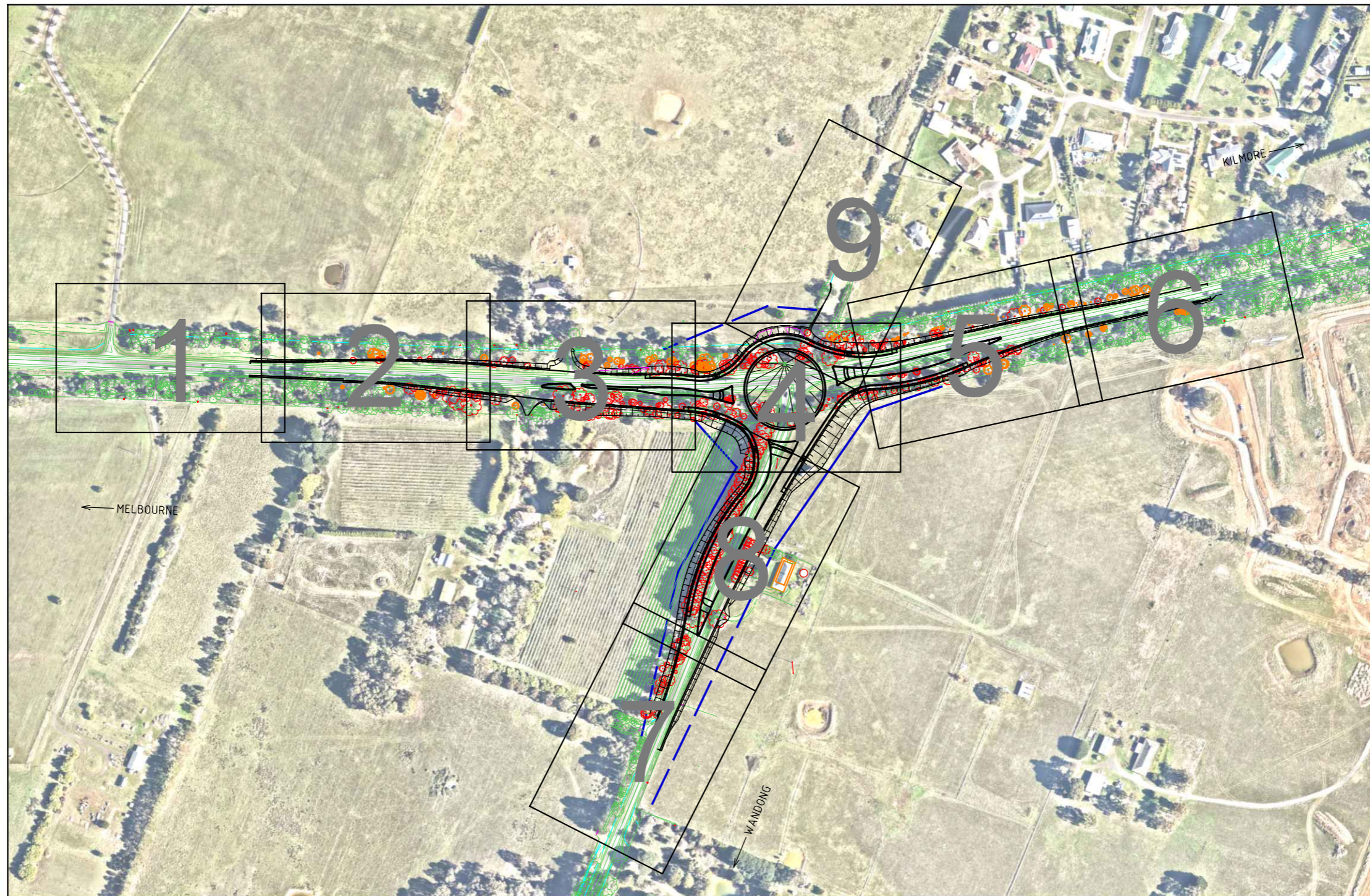
APPROVED

CAT: Road_Design
 PROJ: 862nhekr
 FILE: 862-pd-a-ap-11.dgn

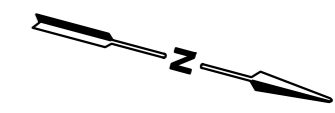


SCALE OF METRES
 HOR 0 40 80
 VER

NORTHERN HWY NORTHERN HIGHWAY / EPPING-KILMORE ROAD INTERSECTION PROJECT OVERVIEW				
FILE NO.	CONTRACT NO.	SHEET NO.	DRAWING NO.	ISSUE
862		2		



WARNING
 BEWARE OF UNDERGROUND SERVICES
 THE LOCATIONS OF UNDERGROUND SERVICES ARE APPROXIMATE ONLY AND THEIR EXACT POSITION SHOULD BE PROVEN ON SITE. NO GUARANTEE IS GIVEN THAT ALL EXISTING SERVICES ARE SHOWN.



23/10/2024 3:42:38 PM Default 862-pd-a-kp-02.dgn

ISSUE	APP'D	DATE	AMENDMENT
E			
D			
C			
B			
A			

GENERAL NOTES

NOT FOR CONSTRUCTION ISSUED 23/10/2024

DESIGNED
ROAD DESIGN

APPROVED

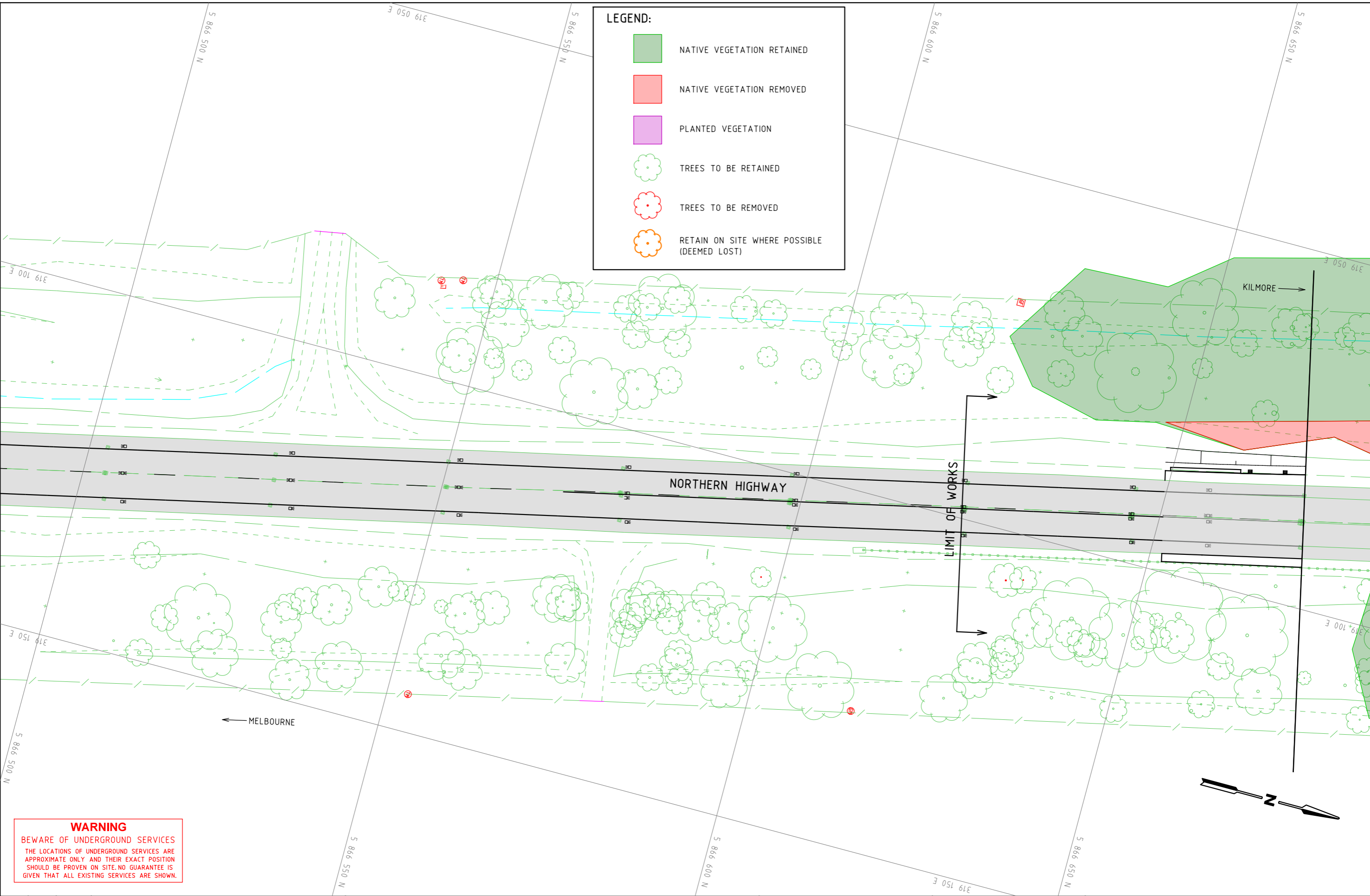
CAT: Road_Design
 PROJ: 862nhekr
 FILE: 862-pd-a-kp-02.dgn

SCALE OF METRES
 HOR 0 40 80
 VER

NORTHERN HWY				
NORTHERN HIGHWAY / EPPING-KILMORE ROAD INTERSECTION				
ALIGNMENT KEY PLAN				
FILE NO.	CONTRACT NO.	SHEET NO.	DRAWING NO.	ISSUE
862		3		

LEGEND:

- NATIVE VEGETATION RETAINED
- NATIVE VEGETATION REMOVED
- PLANTED VEGETATION
- TREES TO BE RETAINED
- TREES TO BE REMOVED
- RETAIN ON SITE WHERE POSSIBLE (DEEMED LOST)



WARNING
BEWARE OF UNDERGROUND SERVICES
THE LOCATIONS OF UNDERGROUND SERVICES ARE APPROXIMATE ONLY AND THEIR EXACT POSITION SHOULD BE PROVEN ON SITE. NO GUARANTEE IS GIVEN THAT ALL EXISTING SERVICES ARE SHOWN.

23/10/2024 1:52:10 PM Default 862-pd-a-ap-12.dgn

ISSUE	APP'D	DATE	AMENDMENT
E			
D			
C			
B			
A			

GENERAL NOTES

NOT FOR CONSTRUCTION ISSUED 23/10/2024

DESIGNED ROAD DESIGN

APPROVED

CAT: Road_Design
PROJ: 862nhekr
FILE: 862-pd-a-ap-12.dgn

SCALE OF METRES

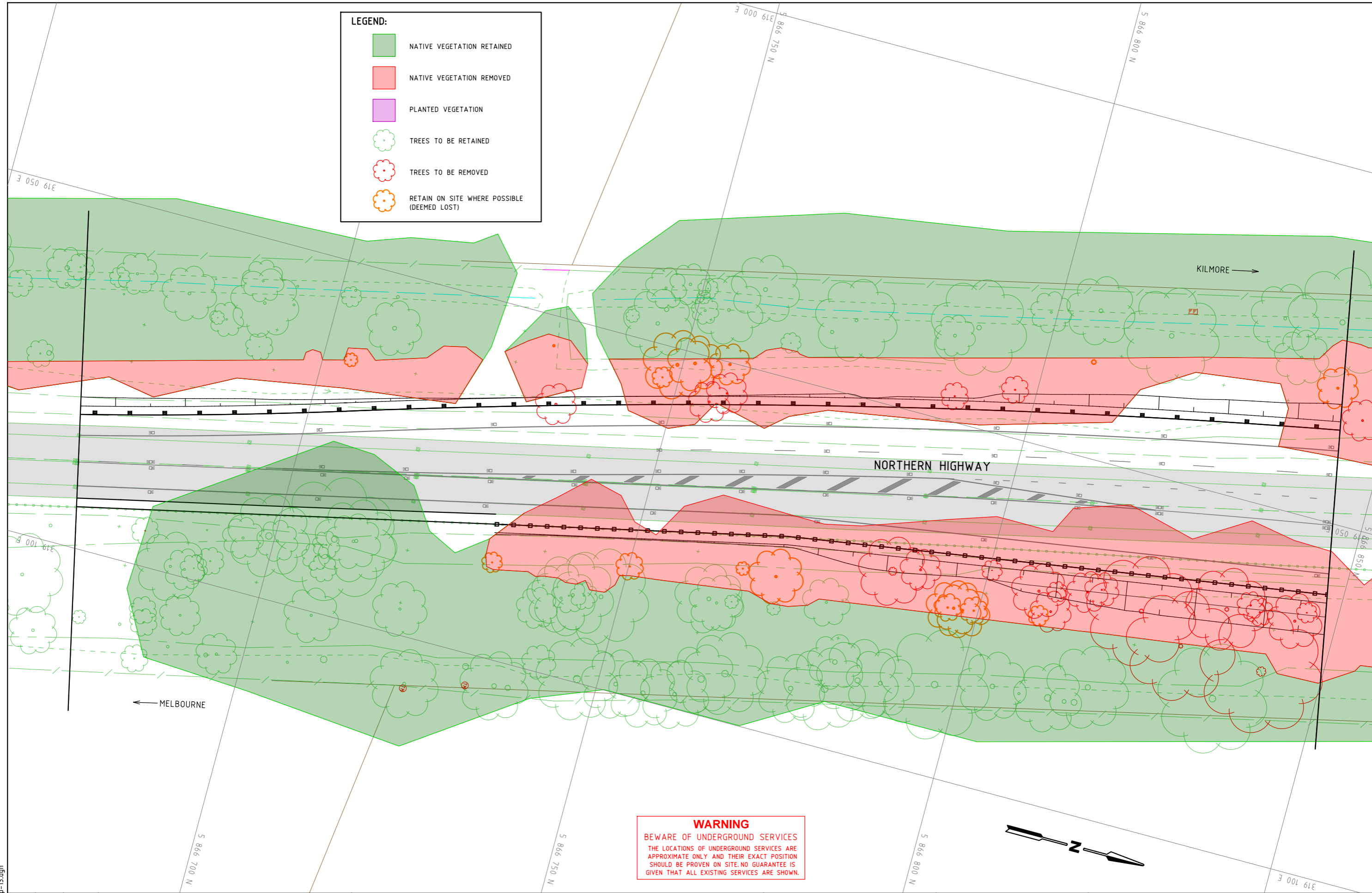
HOR 0 5 10

VER

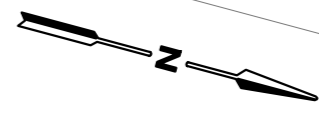
NORTHERN HWY				
NORTHERN HIGHWAY / EPPING-KILMORE ROAD INTERSECTION				
SHEET 1 OF 9				
ALIGNMENT PLAN				
FILE NO.	CONTRACT NO.	SHEET NO.	DRAWING NO.	ISSUE
862		4		

LEGEND:

- NATIVE VEGETATION RETAINED
- NATIVE VEGETATION REMOVED
- PLANTED VEGETATION
- TREES TO BE RETAINED
- TREES TO BE REMOVED
- RETAIN ON SITE WHERE POSSIBLE (DEEMED LOST)



WARNING
 BEWARE OF UNDERGROUND SERVICES
 THE LOCATIONS OF UNDERGROUND SERVICES ARE APPROXIMATE ONLY AND THEIR EXACT POSITION SHOULD BE PROVEN ON SITE. NO GUARANTEE IS GIVEN THAT ALL EXISTING SERVICES ARE SHOWN.



23/10/2024 1:53:51 PM Default 862-pd-a-ap-13.dgn

E	APP'D	DATE	AMENDMENT

GENERAL NOTES

NOT FOR CONSTRUCTION ISSUED 23/10/2024

DESIGNED
ROAD DESIGN

APPROVED

CAT: Road_Design
 PROJ: 862nhekr
 FILE: 862-pd-a-ap-13.dgn

SCALE OF METRES

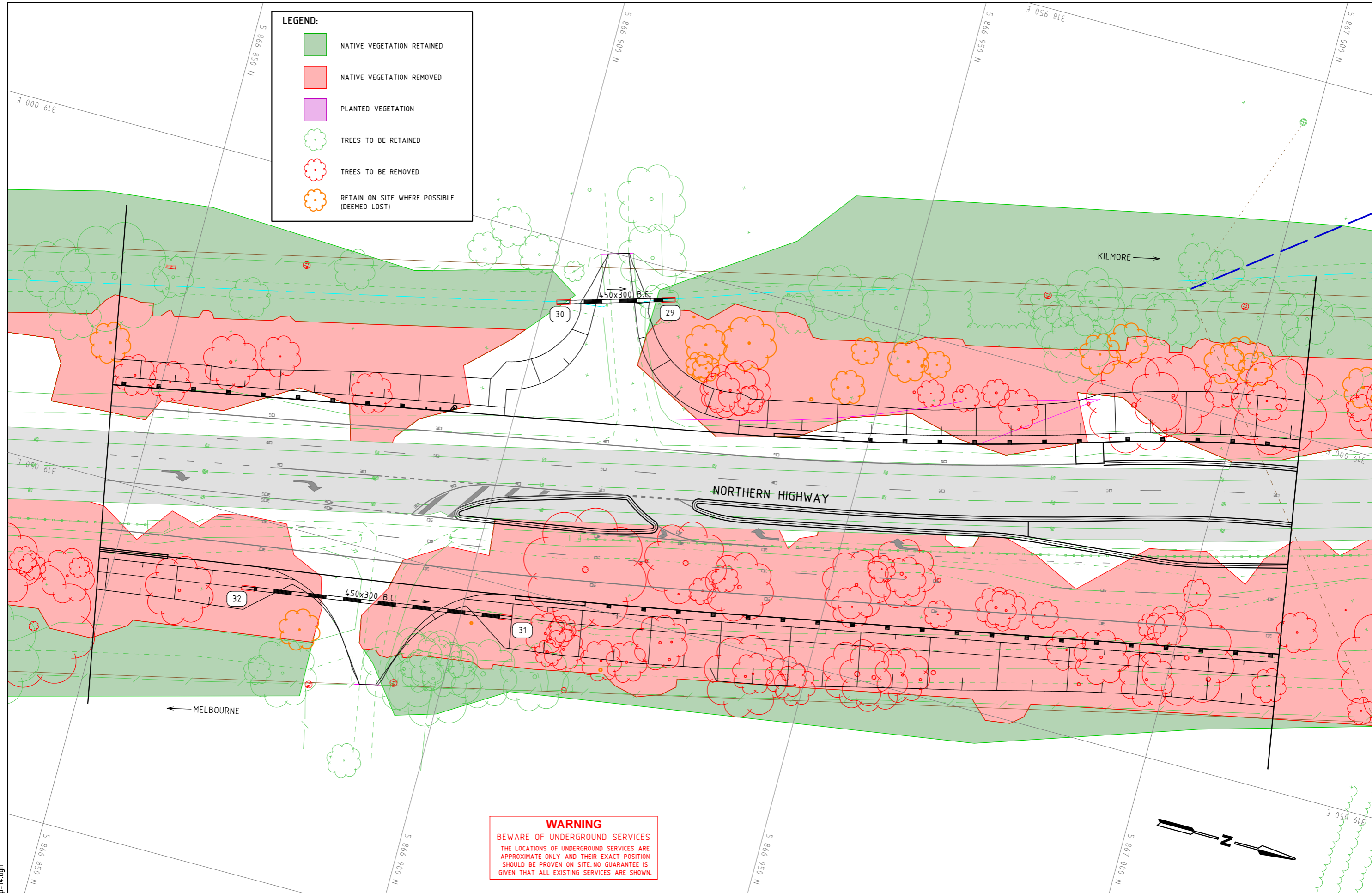
HOR 0 5 10

VER

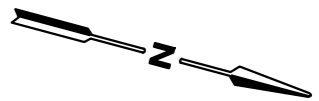
NORTHERN HWY				
NORTHERN HIGHWAY / EPPING-KILMORE ROAD INTERSECTION				
SHEET 2 OF 9				
ALIGNMENT PLAN				
FILE NO.	CONTRACT NO.	SHEET NO.	DRAWING NO.	ISSUE
862		5		

LEGEND:

- NATIVE VEGETATION RETAINED
- NATIVE VEGETATION REMOVED
- PLANTED VEGETATION
- TREES TO BE RETAINED
- TREES TO BE REMOVED
- RETAIN ON SITE WHERE POSSIBLE (DEEMED LOST)



WARNING
 BEWARE OF UNDERGROUND SERVICES
 THE LOCATIONS OF UNDERGROUND SERVICES ARE APPROXIMATE ONLY AND THEIR EXACT POSITION SHOULD BE PROVEN ON SITE. NO GUARANTEE IS GIVEN THAT ALL EXISTING SERVICES ARE SHOWN.




23/10/2024 1:55:20 PM Default 862-pd-a-ap-14.dgn

ISSUE	APP'D	DATE	AMENDMENT
E			
D			
C			
B			
A			

GENERAL NOTES
NOT FOR CONSTRUCTION ISSUED 23/10/2024

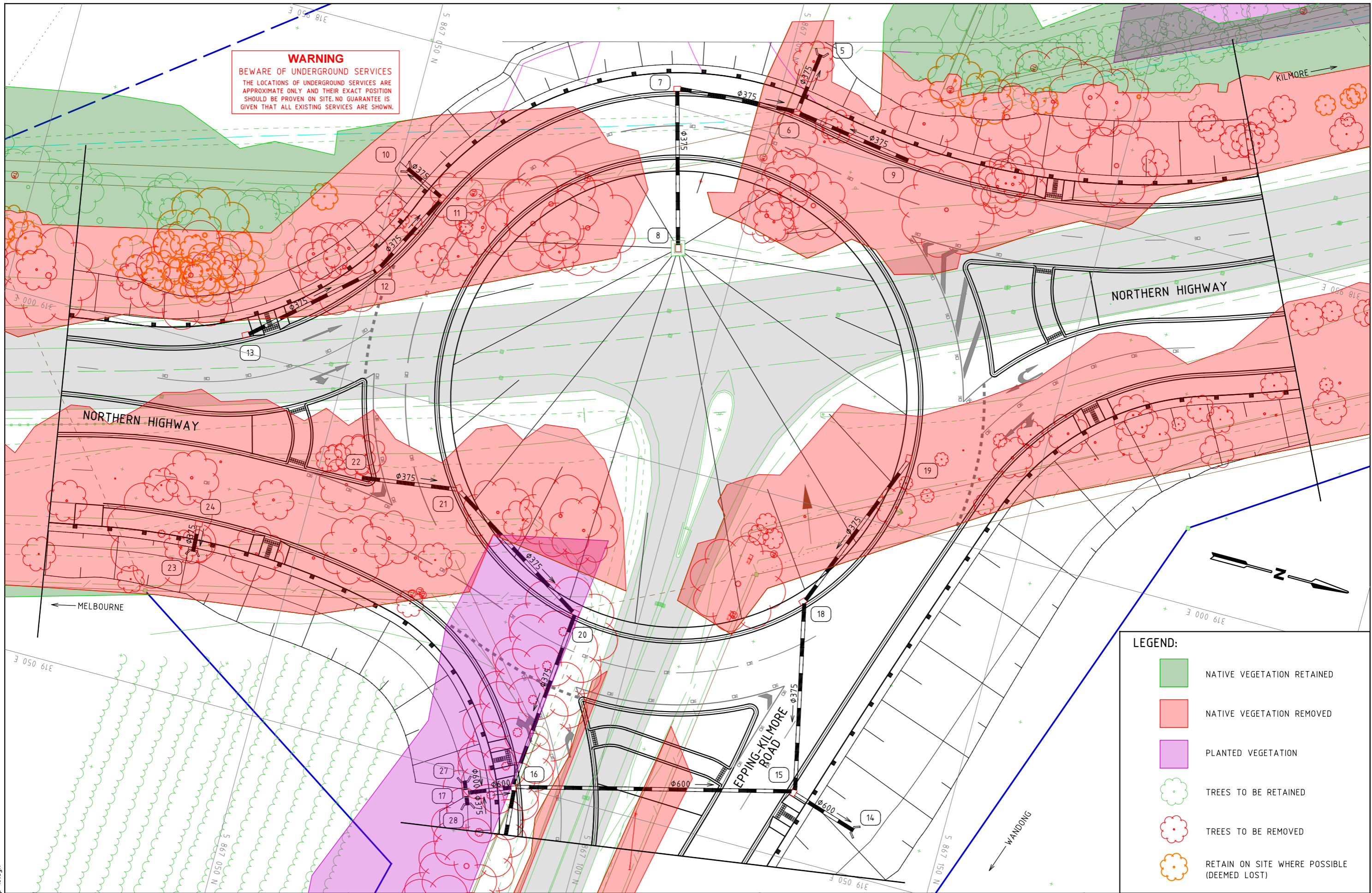
DESIGNED ROAD DESIGN
APPROVED
CAT: Road_Design PROJ: 862nhekr FILE: 862-pd-a-ap-14.dgn



SCALE OF METRES
 HOR 0 5 10
 VER

NORTHERN HWY				
NORTHERN HIGHWAY / EPPING-KILMORE ROAD INTERSECTION				
SHEET 3 OF 9				
ALIGNMENT PLAN				
FILE NO. 862	CONTRACT NO.	SHEET NO. 6	DRAWING NO.	ISSUE

WARNING
 BEWARE OF UNDERGROUND SERVICES
 THE LOCATIONS OF UNDERGROUND SERVICES ARE APPROXIMATE ONLY AND THEIR EXACT POSITION SHOULD BE PROVEN ON SITE. NO GUARANTEE IS GIVEN THAT ALL EXISTING SERVICES ARE SHOWN.



LEGEND:

- NATIVE VEGETATION RETAINED
- NATIVE VEGETATION REMOVED
- PLANTED VEGETATION
- TREES TO BE RETAINED
- TREES TO BE REMOVED
- RETAIN ON SITE WHERE POSSIBLE (DEEMED LOST)

GENERAL NOTES
 NOT FOR CONSTRUCTION ISSUED 23/10/2024

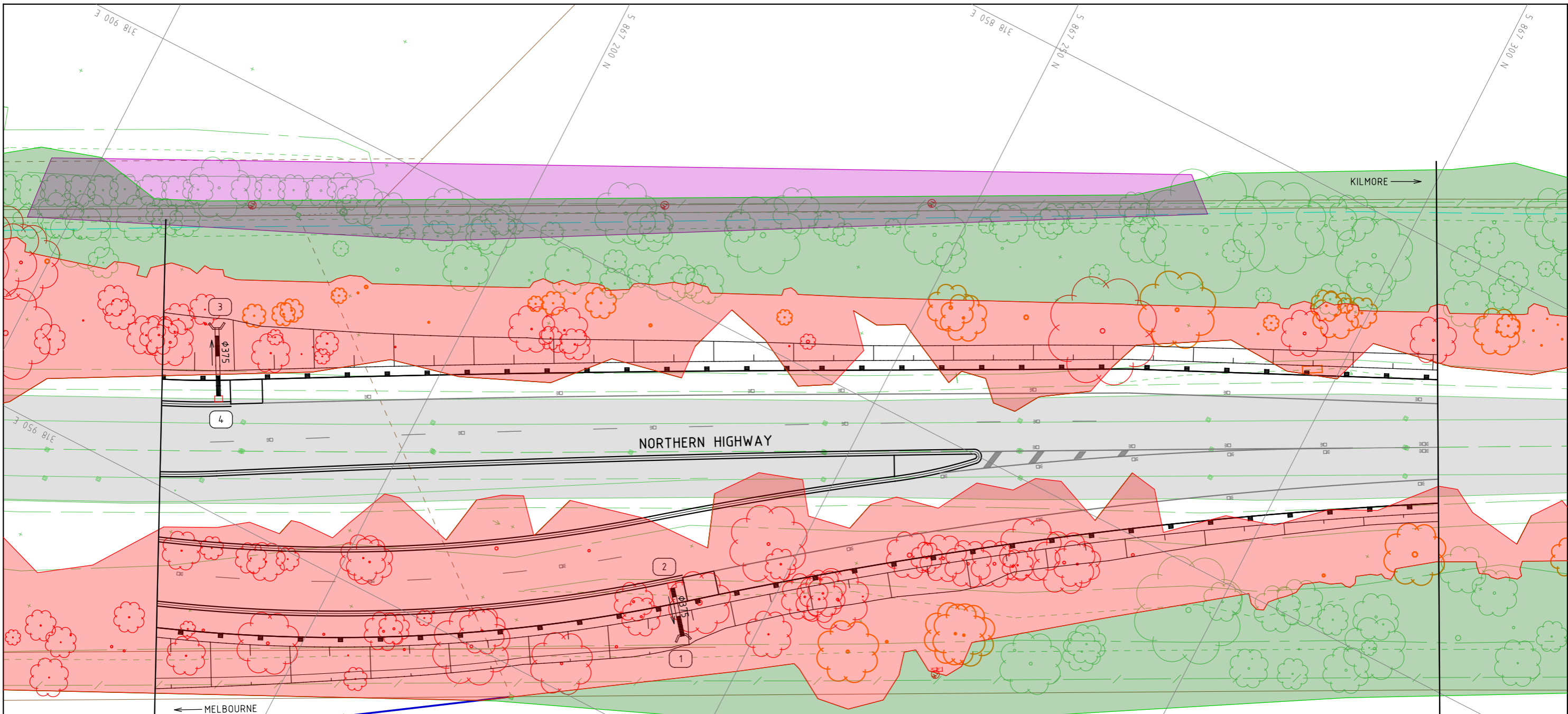
DESIGNED ROAD DESIGN
 APPROVED
 CAT: Road_Design
 PROJ: 862nhekr
 FILE: 862-pd-a-ap-15.dgn

SCALE OF METRES
 HOR 0 5 10
 VER

NORTHERN HWY				
NORTHERN HIGHWAY / EPPING-KILMORE ROAD INTERSECTION				
SHEET 4 OF 9				
ALIGNMENT PLAN				
FILE NO.	CONTRACT NO.	SHEET NO.	DRAWING NO.	ISSUE
862		7		

E				
D				
C				
B				
A				
ISSUE	APP'D	DATE	AMENDMENT	

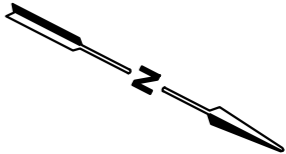
23/10/2024 15:56:34 PM Default 862-pd-a-ap-15.dgn



LEGEND:

- NATIVE VEGETATION RETAINED
- NATIVE VEGETATION REMOVED
- PLANTED VEGETATION
- TREES TO BE RETAINED
- TREES TO BE REMOVED
- RETAIN ON SITE WHERE POSSIBLE (DEEMED LOST)

WARNING
 BEWARE OF UNDERGROUND SERVICES
 THE LOCATIONS OF UNDERGROUND SERVICES ARE APPROXIMATE ONLY AND THEIR EXACT POSITION SHOULD BE PROVEN ON SITE. NO GUARANTEE IS GIVEN THAT ALL EXISTING SERVICES ARE SHOWN.



ISSUE	APP'D	DATE	AMENDMENT
E			
D			
C			
B			
A			

GENERAL NOTES

NOT FOR CONSTRUCTION ISSUED 23/10/2024

DESIGNED ROAD DESIGN

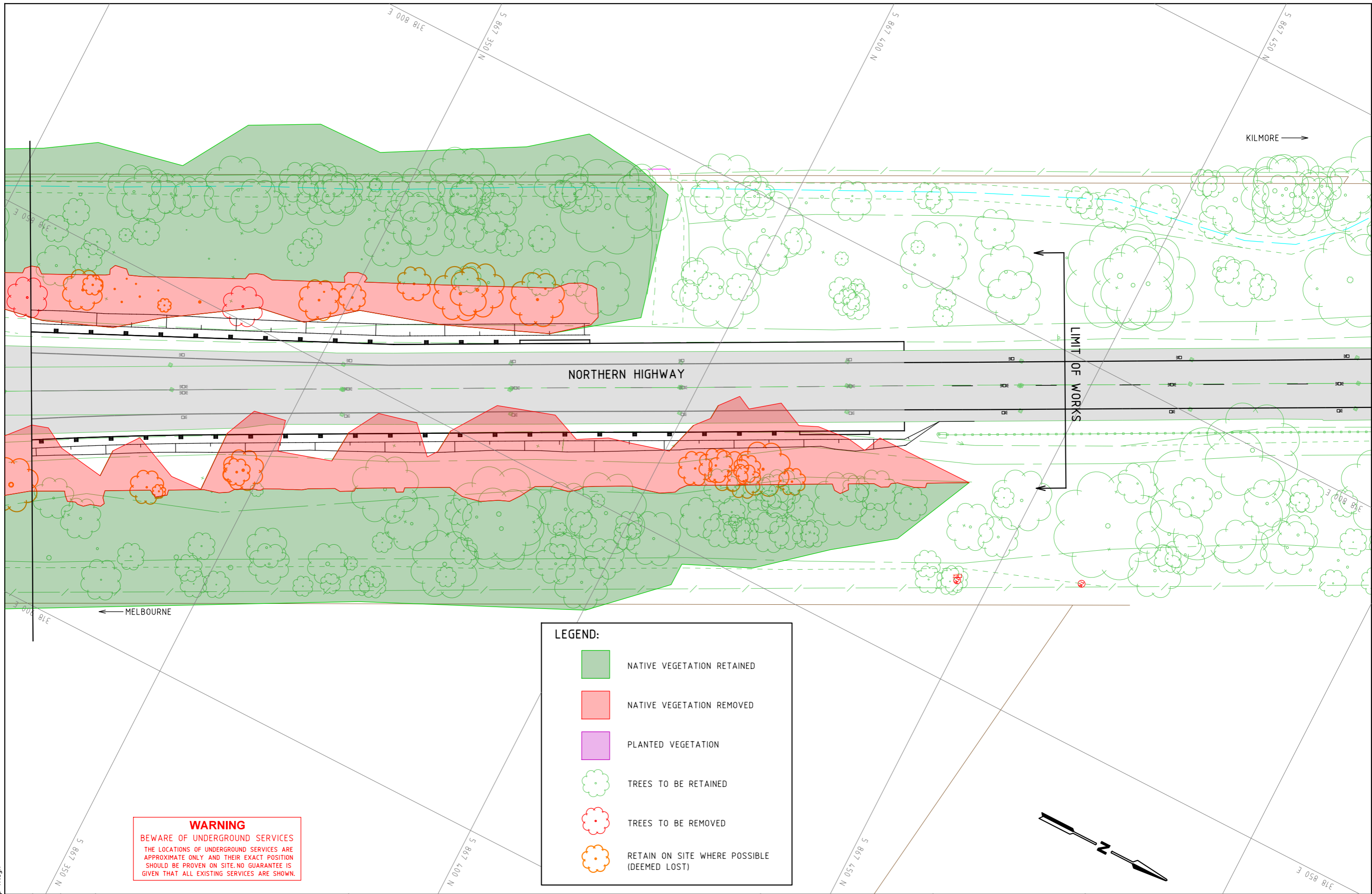
APPROVED

CAT: Road_Design
 PROJ: 862nhekr
 FILE: 862-pd-a-ap-16.dgn

SCALE OF METRES
 HOR 0 5 10
 VER

NORTHERN HWY				
NORTHERN HIGHWAY / EPPING-KILMORE ROAD INTERSECTION				
SHEET 5 OF 9				
ALIGNMENT PLAN				
FILE NO.	CONTRACT NO.	SHEET NO.	DRAWING NO.	ISSUE
862		8		

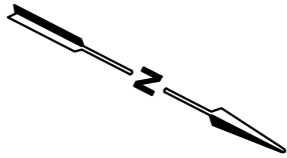
23/10/2024 1:57:41 PM Default 862-pd-a-ap-16.dgn



WARNING
 BEWARE OF UNDERGROUND SERVICES
 THE LOCATIONS OF UNDERGROUND SERVICES ARE APPROXIMATE ONLY AND THEIR EXACT POSITION SHOULD BE PROVEN ON SITE. NO GUARANTEE IS GIVEN THAT ALL EXISTING SERVICES ARE SHOWN.

LEGEND:

- NATIVE VEGETATION RETAINED
- NATIVE VEGETATION REMOVED
- PLANTED VEGETATION
- TREES TO BE RETAINED
- TREES TO BE REMOVED
- RETAIN ON SITE WHERE POSSIBLE (DEEMED LOST)



23/10/2024 1:58:21 PM Default 862-pd-a-ap-17.dgn

ISSUE	APP'D	DATE	AMENDMENT
E			
D			
C			
B			
A			

GENERAL NOTES

NOT FOR CONSTRUCTION ISSUED 23/10/2024

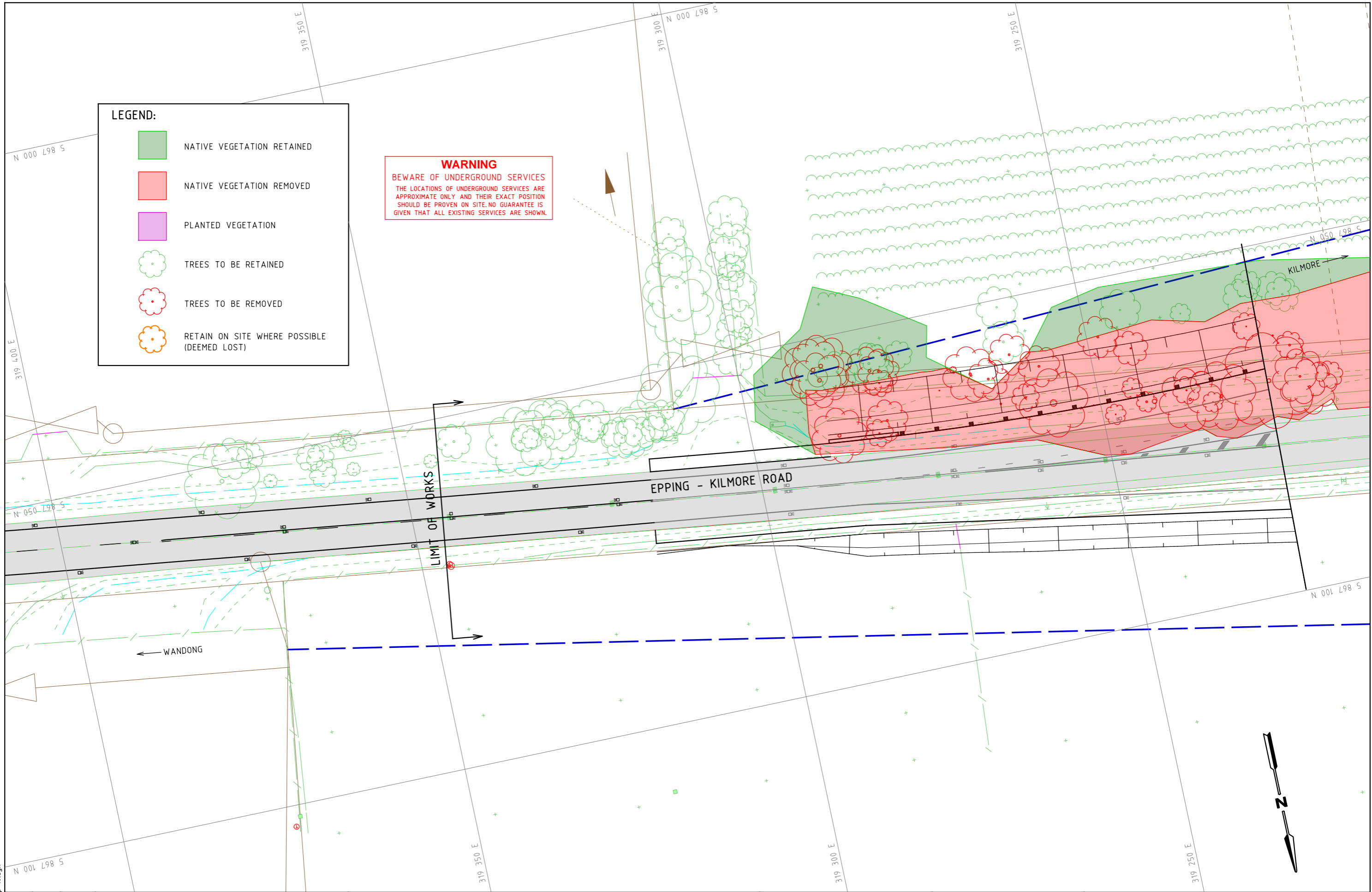
DESIGNED
ROAD DESIGN

APPROVED

CAT: Road_Design
 PROJ: 862nhekr
 FILE: 862-pd-a-ap-17.dgn

SCALE OF METRES
 HOR 0 5 10
 VER

NORTHERN HWY				
NORTHERN HIGHWAY / EPPING-KILMORE ROAD INTERSECTION				
SHEET 6 OF 9				
ALIGNMENT PLAN				
FILE NO.	CONTRACT NO.	SHEET NO.	DRAWING NO.	ISSUE
862		9		



23/10/2024 1:58:50 PM Default 862-pd-a-ap-18.dgn

ISSUE	APP'D	DATE	AMENDMENT
E			
D			
C			
B			
A			

GENERAL NOTES

NOT FOR CONSTRUCTION ISSUED 23/10/2024

DESIGNED ROAD DESIGN

APPROVED

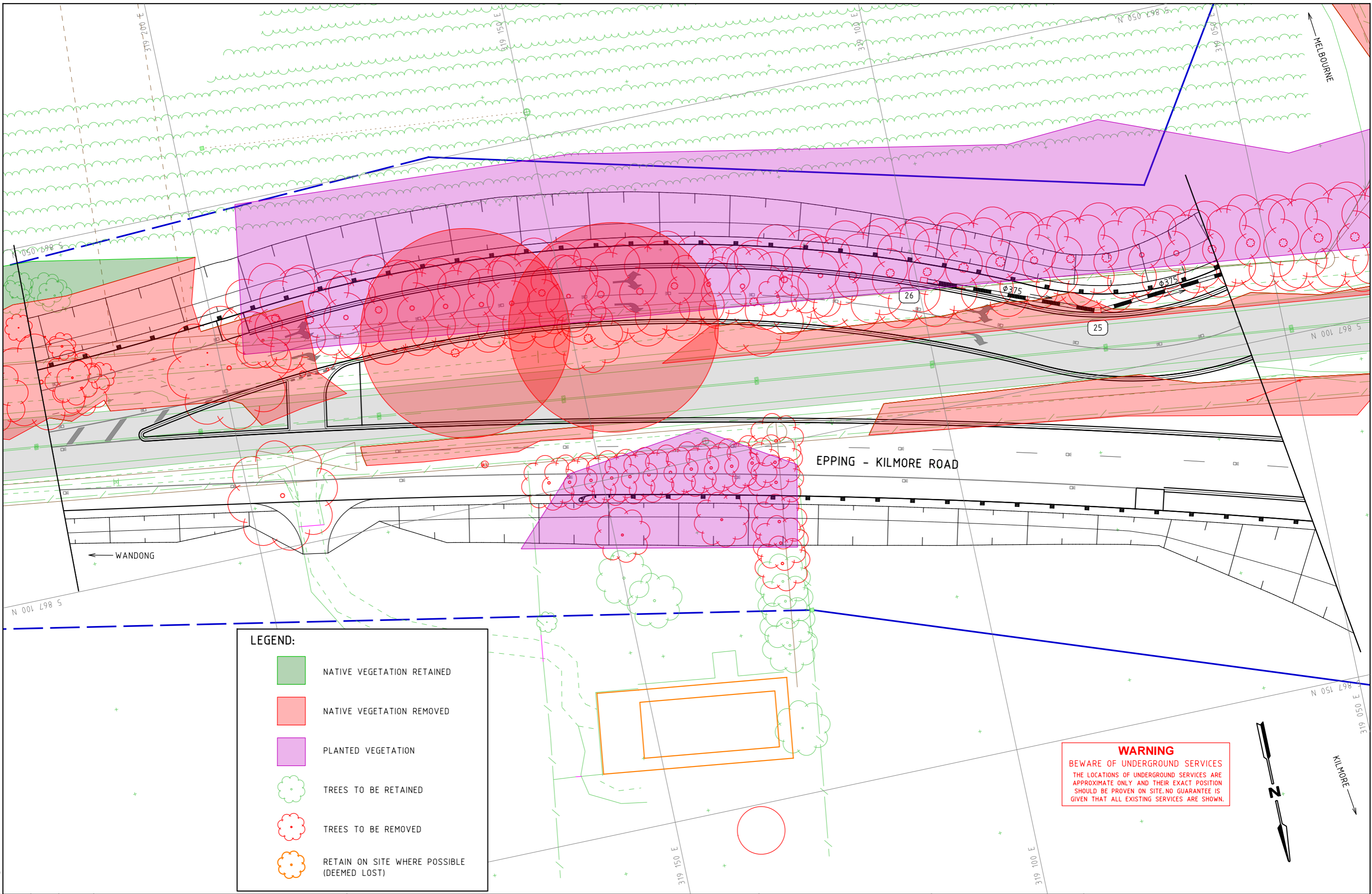
CAT: Road_Design
PROJ: 862nhekr
FILE: 862-pd-a-ap-18.dgn

SCALE OF METRES

HOR 0 5 10

VER

NORTHERN HWY				
NORTHERN HIGHWAY / EPPING-KILMORE ROAD INTERSECTION				
SHEET 7 OF 9				
ALIGNMENT PLAN				
FILE NO.	CONTRACT NO.	SHEET NO.	DRAWING NO.	ISSUE
862		10		



LEGEND:

- NATIVE VEGETATION RETAINED
- NATIVE VEGETATION REMOVED
- PLANTED VEGETATION
- TREES TO BE RETAINED
- TREES TO BE REMOVED
- RETAIN ON SITE WHERE POSSIBLE (DEEMED LOST)

WARNING
 BEWARE OF UNDERGROUND SERVICES
 THE LOCATIONS OF UNDERGROUND SERVICES ARE APPROXIMATE ONLY AND THEIR EXACT POSITION SHOULD BE PROVEN ON SITE. NO GUARANTEE IS GIVEN THAT ALL EXISTING SERVICES ARE SHOWN.



ISSUE	APP'D	DATE	AMENDMENT
E			
D			
C			
B			
A			

GENERAL NOTES

NOT FOR CONSTRUCTION ISSUED 23/10/2024

DESIGNED
ROAD DESIGN

APPROVED

CAT: Road_Design
 PROJ: 862nhekr
 FILE: 862-pd-a-ap-19.dgn

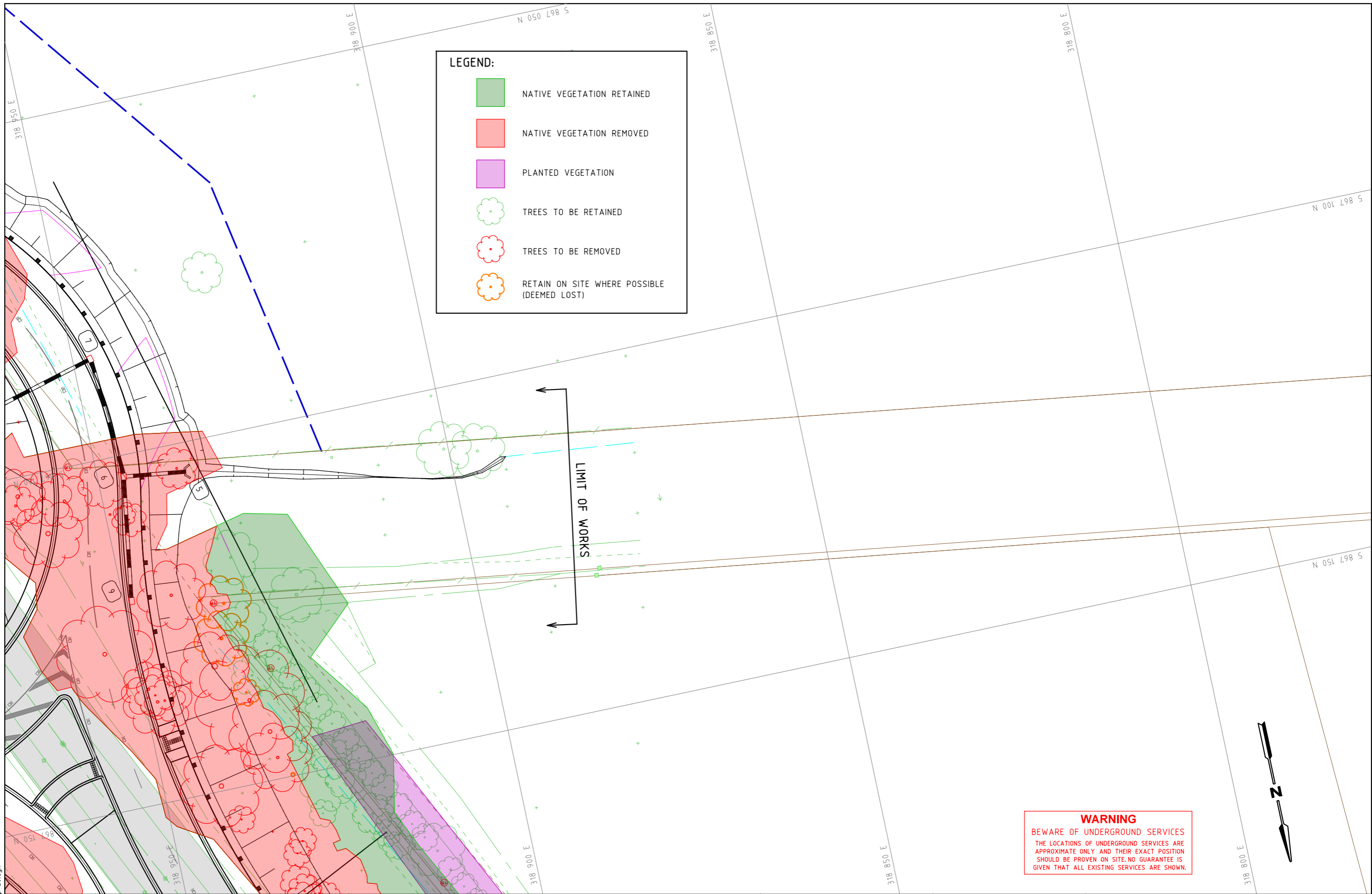
SCALE OF METRES

HOR 0 5 10

VER

NORTHERN HWY				
NORTHERN HIGHWAY / EPPING-KILMORE ROAD INTERSECTION				
SHEET 8 OF 9				
ALIGNMENT PLAN				
FILE NO.	CONTRACT NO.	SHEET NO.	DRAWING NO.	ISSUE
862		11		

23/10/2024 1:59:23 PM Default 862-pd-a-ap-19.dgn



LEGEND:

- NATIVE VEGETATION RETAINED
- NATIVE VEGETATION REMOVED
- PLANTED VEGETATION
- TREES TO BE RETAINED
- TREES TO BE REMOVED
- RETAIN ON SITE WHERE POSSIBLE (DEEMED LOST)

LIMIT OF WORKS

WARNING
BEWARE OF UNDERGROUND SERVICES
THE LOCATIONS OF UNDERGROUND SERVICES ARE APPROXIMATE ONLY AND THEIR EXACT POSITION SHOULD BE PROVEN ON SITE. NO GUARANTEE IS GIVEN THAT ALL EXISTING SERVICES ARE SHOWN.



23/10/2024 2:01:44 PM Default 862-pd-a-ap-20.dgn

E	D	C	B	A	ISSUE	APP'D	DATE	AMENDMENT

GENERAL NOTES

NOT FOR CONSTRUCTION ISSUED 23/10/2024

DESIGNED
ROAD DESIGN

APPROVED

CAT: Road_Design
PROJ: 862nhekr
FILE: 862-pd-a-ap-20.dgn

SCALE OF METRES
HOR 0 5 10
VER

NORTHERN HWY
NORTHERN HIGHWAY / EPPING-KILMORE ROAD INTERSECTION
SHEET 9 OF 9
ALIGNMENT PLAN

FILE NO. 862	CONTRACT NO.	SHEET NO. 12	DRAWING NO.	ISSUE
------------------------	--------------	------------------------	-------------	-------