

**GENERAL LEGEND:**

- PROJECT BOUNDARY
- BDY EASTERN FREEWAY DECLARED BOUNDARY
- DRAWING MATCHLINE
- EXISTING ROCK CUTTING

**PLANTING MIXES & SOFT SURFACES:**

- GR01** MOWABLE TURF
- MU01** MULCH
- GB01A** PLANTING MIX 01A WATERWAY RESTORATION
- GB01B** PLANTING MIX 01B RIPARIAN RESTORATION
- GB01C** PLANTING MIX 01C BIORETENTION - BASIN BASE
- GB01D** PLANTING MIX 01D BIORETENTION - BASIN BATTER
- GB02A** PLANTING MIX 02A HABITAT CORRIDOR - FAIRLEA
- GB02B** PLANTING MIX 02B HABITAT CORRIDOR - YARRA RIVER
- GB02C** PLANTING MIX 02C HABITAT CORRIDOR - WOODLAND EMBANKMENT
- GB02D** PLANTING MIX 02D HABITAT CORRIDOR - GRASSLAND
- GB03A** PLANTING MIX 03A PEDESTRIAN INTERFACE - ALEXANDRA AVE
- GB03B** PLANTING MIX 03B PEDESTRIAN INTERFACE - CHANDLER HWY
- GB03C** PLANTING MIX 03C PEDESTRIAN INTERFACE - KILBY RD
- GB03D** PLANTING MIX 03D PEDESTRIAN INTERFACE - BURKE RD
- GB03E** PLANTING MIX 03E PEDESTRIAN INTERFACE - SUP
- GB04A** PLANTING MIX 04A ROADWAY - CONCRETE BARRIER INTERFACE
- GB04B** PLANTING MIX 04B ROADWAY - ROAD BARRIER INTERFACE
- GB04C** PLANTING MIX 04C ROADWAY - CHANDLER MEDIAN LOWER BATTER
- GB04D** PLANTING MIX 04D ROADWAY - CHANDLER MEDIAN MID BATTER
- GB04E** PLANTING MIX 04E ROADWAY - CHANDLER MEDIAN UPPER BATTER
- GB04F** PLANTING MIX 04F NOISE WALLS - SOUTH FACING
- GB04G** PLANTING MIX 04G NOISE WALLS - NORTH FACING
- GB04H** PLANTING MIX 04H BATTER - NORTH FACING
- GB05** PLANTING MIX 05 CO-DESIGN PLANTING
- SS01** SOIL STABILISATION JUTE MATT

**SURFACES**

- PV01** CEMENT STABILISED COMPACTED GRAVEL
- PV02** CO-DESIGN SANDBLAST PATTERN

ON HOLD REFER HC027

**WAYFINDING**

- DR1** DIRECTIONAL POLE MOUNTED FINGER BLADE

**LANDSCAPE FIXTURES**

- LF01A** NATURAL BOULDER - LARGE
- LF01B** NATURAL BOULDER TO CO-DESIGN NODES - WITH CARVINGS
- LF02A** SITE-FELLED LOG - INFORMAL SEATING
- LF02B** SITE-FELLED LOG - HABITAT
- LF02C** SITE-FELLED LOG - CO-DESIGN LOG CARVING
- LS01A** CO-DESIGN INTERPRETIVE SIGNAGE - LARGE
- LS01B** CO-DESIGN INTERPRETIVE SIGNAGE - SMALL
- LS02A** CO-DESIGN PERFORATED PANEL - TYPE A
- LS02B** CO-DESIGN PERFORATED PANEL - TYPE B

ON HOLD REFER HC027

ON HOLD REFER HC027

**TREES:**

- PROPOSED TREE
- EXISTING TREE TO BE RETAINED
- TRUNK CENTRE POINT
- STRUCTURAL ROOT ZONE (SRZ)
- TREE PROTECTION ZONE (TPZ)

NOTE: EXISTING RETAINED TREES ARE SUBJECT TO ONGOING REVIEW. ONLY RETAINED TREES IN PROXIMITY TO THE EXTENT OF WORKS ARE SHOWN.

ON HOLD REFER HC027

**CAUTION**

THIS DRAWING IS BASED ON SURVEY THAT IS INCOMPLETE AND NOT VERIFIED. THE EXISTING SURFACE MAY VARY FROM THAT INDICATED AND SOME FEATURES MAY NOT BE SHOWN.

**WARNING**

BWARE OF UNDERGROUND/OVERHEAD SERVICES THE LOCATIONS OF UNDERGROUND/OVERHEAD SERVICES ARE APPROXIMATE ONLY AND THEIR EXACT POSITION SHOULD BE PROVEN ON SITE. NO GUARANTEE IS GIVEN THAT ALL EXISTING SERVICES ARE SHOWN.



**NOT FOR CONSTRUCTION**

**FINAL DESIGN**

© North East Link Program

DTP No.:

<p><b>DISCLAIMER</b></p> <p>Conditions of Use: This Document has been developed for the purposes of the North East Link Project and Eastern Freeway Hoddle to Burke Upgrade.</p> <p>Recipients of this document: - Are subject to obligations of confidentiality in relation to this document, and information handling obligations indicated by the Protective Marking Security Classification as per Department of Transport Information Security Policy; and - May not rely upon the information contained in this document, and must rely absolutely on their own opinion and professional advice.</p>		<p><b>JOHN HOLLAND</b> <b>Jacobs</b></p> <p><b>MOTT MACDONALD</b> <b>SEYMOUR WHYTE</b></p> <p><b>BIG BUILD</b> <b>EASTERN FREEWAY</b></p> <p>Hoddle to Burke Alliance</p>		<p><b>VIDA Roads</b></p> <p>VICTORIAN INFRASTRUCTURE DELIVERY AUTHORITY</p> <p>VICTORIA'S BIG BUILD</p> <p>VICTORIA Government</p>		<p>EASTERN FREEWAY UPGRADES (HODDLE TO BURKE) H600 - ZONE 4990 - PROJECT WIDE - HODDLE STREET TO BURKE ROAD LANDSCAPE - PROJECT WIDE</p> <p>LANDSCAPE LEGEND - SHEET 01</p>		<p>PROJECT CONTRACT: WEST</p> <p>NELP DRAWING No.: NEL-WST-ASP-4990-ULS-DRG- 7009</p> <p>SUIT. CODE: A3</p> <p>REVISION: C</p>																													
<p>REVISIONS</p> <table border="1"> <tr> <th>NO.</th> <th>DESCRIPTION</th> <th>DATE</th> </tr> <tr> <td>C</td> <td>ISSUED FOR FINAL DESIGN</td> <td>27/03/2026</td> </tr> <tr> <td>B</td> <td>ISSUED FOR DETAILED DESIGN</td> <td>18/12/2025</td> </tr> <tr> <td>A</td> <td>ISSUED FOR PRELIMINARY DESIGN</td> <td>18/09/2025</td> </tr> </table>		NO.	DESCRIPTION	DATE	C	ISSUED FOR FINAL DESIGN	27/03/2026	B	ISSUED FOR DETAILED DESIGN	18/12/2025	A	ISSUED FOR PRELIMINARY DESIGN	18/09/2025	<p>APPROVALS</p> <table border="1"> <tr> <th>ROLE</th> <th>NAME</th> <th>DATE</th> </tr> <tr> <td>DRAFTING CHECKED BY</td> <td>F.YI</td> <td>18/03/2026</td> </tr> <tr> <td>DESIGNED BY</td> <td>R.WILLIAMSON</td> <td>18/03/2026</td> </tr> <tr> <td>ENGINEERING CHECKED BY</td> <td></td> <td></td> </tr> <tr> <td>VERIFIED BY</td> <td>J.GERALIS</td> <td>18/03/2026</td> </tr> <tr> <td>APPROVED BY</td> <td>R.GROCKE</td> <td>18/03/2026</td> </tr> </table>		ROLE	NAME	DATE	DRAFTING CHECKED BY	F.YI	18/03/2026	DESIGNED BY	R.WILLIAMSON	18/03/2026	ENGINEERING CHECKED BY			VERIFIED BY	J.GERALIS	18/03/2026	APPROVED BY	R.GROCKE	18/03/2026	<p>COORDINATE SYSTEM: MGA55/GDA94</p> <p>HEIGHT DATUM (m): AHD</p> <p>DRAWN: F.Y.</p>		<p>SIZE: A3</p> <p>SCALE: NTS</p> <p>CAD FILE:</p>	
NO.	DESCRIPTION	DATE																																			
C	ISSUED FOR FINAL DESIGN	27/03/2026																																			
B	ISSUED FOR DETAILED DESIGN	18/12/2025																																			
A	ISSUED FOR PRELIMINARY DESIGN	18/09/2025																																			
ROLE	NAME	DATE																																			
DRAFTING CHECKED BY	F.YI	18/03/2026																																			
DESIGNED BY	R.WILLIAMSON	18/03/2026																																			
ENGINEERING CHECKED BY																																					
VERIFIED BY	J.GERALIS	18/03/2026																																			
APPROVED BY	R.GROCKE	18/03/2026																																			

Note: \* Indicates signed documents as drawings will not have wet signatures. This drawing must not be used for construction unless signed as approved by Project Approval

# TREE SCHEDULE

ID	Botanical Name	Common Name	Tree Spacing	Mature Height	Mature Width	Pot Size	QTY
ACA.DEA	<i>Acacia dealbata</i>	Silver Wattle	As Shown	20m	8m	tubestock	154
ACA.IMP	<i>Acacia implexa</i>	Lightwood	As Shown	8m	6m	tubestock	571
ACA.MEL	<i>Acacia melanoxylon</i>	Blackwood	As Shown	15m	10m	tubestock	441
ACA.MER	<i>Acacia meamsii</i>	Black Wattle	As Shown	15m	10m	tubestock	49
ACA.PYC	<i>Acacia pycnantha</i>	Golden Wattle	As Shown	6m	4m	tubestock	298
ALL.LIT	<i>Allocasuarina littoralis</i>	Black She Oak	As Shown	8m	5m	tubestock	31
ALL.VER	<i>Allocasuarina verticillata</i>	Drooping She-oak	As Shown	6m	4m	tubestock	843
BUR.SPI	<i>Bursaria spinosa</i>	Sweet Bursaria	As Shown	40m	3m	tubestock	23
COR.MAC	<i>Corymbia maculata</i>	Spotted Gum	As Shown	30m	10m	tubestock	39
EUC.CAM	<i>Eucalyptus camaldulensis</i>	River Red Gum	As Shown	25m	10m	tubestock	419
EUC.LER	<i>Eucalyptus leucoxylon 'Rosea'</i>	Red Flowering Yellow Gum	As Shown	10m	4m	tubestock	150
EUC.MEL	<i>Eucalyptus melliodora</i>	Yellow Box	As Shown	15m	10m	tubestock	406
EUC.OVA	<i>Eucalyptus ovata var ovata</i>	Swamp Gum	As Shown	15m	8m	tubestock	5
EUC.RAD	<i>Eucalyptus radiata</i>	Narrow leaved Peppermint	As Shown	10m	6m	tubestock	171
EUC.SID	<i>Eucalyptus sideroxylon</i>	Red Ironbark	As Shown	15m	8m	tubestock	378
EUC.VIM	<i>Eucalyptus viminalis</i>	Mana Gum	As Shown	22m	10m	tubestock	88
ACA.IMP-45L	<i>Acacia implexa</i>	Lightwood	As Shown	8m	6m	45L	5
ALL.VER-45L	<i>Allocasuarina verticillata</i>	Drooping She-oak	As Shown	6m	4m	45L	22
EUC.CAM-45L	<i>Eucalyptus camaldulensis</i>	River Red Gum	As Shown	25m	10m	45L	16
EUC.MEL-45L	<i>Eucalyptus melliodora</i>	Yellow Box	As Shown	15m	10m	45L	66
EUC.SID-45L	<i>Eucalyptus sideroxylon</i>	Red Ironbark	As Shown	15m	8m	45L	14
<b>Total</b>							<b>4189</b>

**CAUTION**  
THIS DRAWING IS BASED ON SURVEY THAT IS INCOMPLETE AND NOT VERIFIED. THE EXISTING SURFACE MAY VARY FROM THAT INDICATED AND SOME FEATURES MAY NOT BE SHOWN.

**WARNING**  
BEWARE OF UNDERGROUND/OVERHEAD SERVICES THE LOCATIONS OF UNDERGROUND/OVERHEAD SERVICES ARE APPROXIMATE ONLY AND THEIR EXACT POSITION SHOULD BE PROVEN ON SITE. NO GUARANTEE IS GIVEN THAT ALL EXISTING SERVICES ARE SHOWN.



**NOT FOR CONSTRUCTION**

**FINAL DESIGN**

© North East Link Program		DRAFTING CHECKED BY: F.YI		NAME: R.WILLIAMSON		DATE: 18/03/2026		DISCLAIMER				EASTERN FREEWAY UPGRADES (HODDLE TO BURKE) H600 - ZONE 4990 - PROJECT WIDE - HODDLE STREET TO BURKE ROAD LANDSCAPE - PROJECT WIDE	
C ISSUED FOR FINAL DESIGN		27/03/2026		DESIGNED BY: R.WILLIAMSON		18/03/2026		<p>Conditions of Use: This Document has been developed for the purposes of the North East Link Project and Eastern Freeway Hoddle to Burke Upgrade.</p> <p>Recipients of this document: - Are subject to obligations of confidentiality in relation to this document, and information handling obligations indicated by the Protective Marking Security Classification as per Department of Transport Information Security Policy; and - May not rely upon the information contained in this document, and must rely absolutely on their own opinion and professional advice.</p>				PLANTING SCHEDULE - SHEET 01	
B ISSUED FOR DETAILED DESIGN		18/12/2025		ENGINEERING CHECKED BY: J.GERALIS		18/03/2026		<p>COORDINATE SYSTEM: MGA55/GDA94</p>		<p>Protective Marking: OFFICIAL: Sensitive</p>		PROJECT CONTRACT: WEST	
A ISSUED FOR PRELIMINARY DESIGN		18/09/2025		APPROVED BY: R.GROCKE		18/03/2026		<p>HEIGHT DATUM (m): AHD</p> <p>DRAWN: F.Y.</p>		<p>SIZE: A3</p> <p>SCALE: NTS</p>		<p>CAD FILE:</p>	
REVISIONS		APPROVALS		HEIGHT DATUM (m): AHD		DRAWN: F.Y.		SIZE: A3		SCALE: NTS		<p>NELP DRAWING No.: NEL-WST-ASP-4990-ULS-DRG- 7021</p> <p>SUIT. CODE: A3</p> <p>REVISION: C</p>	

Note: \* Indicates signed documents as drawings will not have wet signatures. This drawing must not be used for construction unless signed as approved by Project Approval

OVERALL QUANTITY SCHEDULE GB01A WATERWAY RESTORATION				TOTAL AREA (m2)			
				135			
NAME	COMMON NAME	DENSITY	MIX (%)	MATURE SIZE (H x Wm)	INSTALLATION SIZE	QUANTITY	
<b>WATERWAY PLANTING</b>							
<i>Alternanthera denticulata</i>	Lesser Joyweed	6 /m <sup>2</sup>	5%	prostrate x 0.5	tubestock	41	
<i>Baumea juncea</i>	Bare Twigsedge	6 /m <sup>2</sup>	5%	1 x 1	tubestock	41	
<i>Bolboschoenus fluviatilis</i>	Tall Club-rush	6 /m <sup>2</sup>	10%	1.5 x 1.5	tubestock	81	
<i>Bolboschoenus medianus</i>	Marsh Club-sedge	6 /m <sup>2</sup>	10%	1 x 1	tubestock	81	
<i>Carex appressa</i>	Tussock Sedge	6 /m <sup>2</sup>	10%	1 x 0.3	tubestock	81	
<i>Juncus flavidus</i>	Yellow Rush	6 /m <sup>2</sup>	10%	1.2 x 1	tubestock	81	
<i>Juncus gregiflorus</i>	Green Rush	6 /m <sup>2</sup>	10%	1.7 x 1.5	tubestock	81	
<i>Lomandra longifolia</i>	Spiny-headed Mat-rush	6 /m <sup>2</sup>	10%	1 x 1.2	tubestock	81	
<i>Lythrum salicaria</i>	Purple Loosestrife	6 /m <sup>2</sup>	5%	1.5 x 1.5	tubestock	41	
<i>Machaerina articulata</i>	Jointed Twig-sedge	6 /m <sup>2</sup>	5%	2 x 0.5	tubestock	41	
<i>Phragmites australis</i>	Common Reed	6 /m <sup>2</sup>	5%	1 x 3	tubestock	41	
<i>Persicaria decipiens</i>	Slender Knotweed	6 /m <sup>2</sup>	5%	0.8 x 0.5	tubestock	41	
<i>Poa ensiformis</i>	Sword Tussock-grass	6 /m <sup>2</sup>	10%	0.8 x 0.5	tubestock	81	
<b>TOTAL</b>		<b>6 /m<sup>2</sup></b>	<b>100%</b>			<b>810</b>	

OVERALL QUANTITY SCHEDULE GB01B RIPARIAN RESTORATION				TOTAL AREA (m2)			
				279			
NAME	COMMON NAME	DENSITY	MIX (%)	MATURE SIZE (H x Wm)	INSTALLATION SIZE	QUANTITY	
<b>WATERWAY PLANTING</b>							
<i>Acaena novae-zelandiae</i>	Bidgee Widgee	6 /m <sup>2</sup>	10%	0.3 x 0.9	tubestock	167	
<i>Coprosma quadrifida</i>	Prickly Currant-bush	6 /m <sup>2</sup>	20%	0.4 x 1.5	tubestock	335	
<i>Einadia nutans</i>	Climbing Saltbush	6 /m <sup>2</sup>	15%	1 x 1	tubestock	251	
<i>Goodenia ovata</i>	Hop Goodenia	6 /m <sup>2</sup>	10%	2.5 x 3	tubestock	167	
<i>Lomandra longifolia</i>	Spiny-headed Mat-Rush	6 /m <sup>2</sup>	15%	1 x 1.2	tubestock	251	
<i>Melicytus dentatus</i>	Tree Violet	6 /m <sup>2</sup>	1%	4 x 2.5	tubestock	17	
<i>Microlaena stipoides</i>	Weeping Grass	6 /m <sup>2</sup>	20%	0.75 x 0.9	tubestock	335	
<i>Ozothamnus ferrugineus</i>	Tree Everlasting	6 /m <sup>2</sup>	2%	3 x 3	tubestock	33	
<i>Pomaderris aspera</i>	Hazel Pomaderris	6 /m <sup>2</sup>	2%	6 x 4	tubestock	33	
<i>Rubus parviflorus</i>	Native Raspberry	6 /m <sup>2</sup>	5%	1 x 2	tubestock	84	
<b>TOTAL</b>		<b>6 /m<sup>2</sup></b>	<b>100%</b>			<b>1674</b>	

OVERALL QUANTITY SCHEDULE GB01C BIORETENTION - BASIN BASE				TOTAL AREA (m2)			
				326			
NAME	COMMON NAME	DENSITY	MIX (%)	MATURE SIZE (H x Wm)	INSTALLATION SIZE	QUANTITY	
<b>TUSSOCK / GRASS</b>							
<i>Carex appressa</i>	Tussock Sedge	8 /m <sup>2</sup>	30%	1 x 0.3	tubestock	782	
<i>Ficinia nodosa</i>	Knobby club-rush	8 /m <sup>2</sup>	30%	0.9 x 0.3	tubestock	782	
<i>Juncus amabilis</i>	Gentle rush	8 /m <sup>2</sup>	10%	1.5 x 0.6	tubestock	261	
<i>Lomandra longifolia</i>	Spiny-headed Mat-Rush	8 /m <sup>2</sup>	30%	1 x 1.2	tubestock	782	
<b>TOTAL</b>		<b>8 /m<sup>2</sup></b>	<b>100%</b>			<b>2608</b>	

OVERALL QUANTITY SCHEDULE GB01D BIORETENTION - BASIN BATTER				TOTAL AREA (m2)			
				279			
NAME	COMMON NAME	DENSITY	MIX (%)	MATURE SIZE (H x Wm)	INSTALLATION SIZE	QUANTITY	
<b>LOW COVER</b>							
<i>Acacia verticillata</i>	Prickly Moses	6 /m <sup>2</sup>	20%	3 x 3	tubestock	335	
<i>Coprosma quadrifida</i>	Prickly Currant-bush	6 /m <sup>2</sup>	20%	1.5 x 3	tubestock	335	
<b>TUSSOCK / GRASS</b>							
<i>Dianella tasmanica</i>	Tasmanian Flax-lily	8 /m <sup>2</sup>	20%	1.5 x 2	tubestock	446	
<i>Ficinia nodosa</i>	Knobby club-rush	10 /m <sup>2</sup>	20%	0.9 x 0.3	tubestock	558	
<i>Lomandra longifolia</i>	Spiny-headed Mat-Rush	8 /m <sup>2</sup>	20%	1 x 1.2	tubestock	446	
<b>TOTAL</b>		<b>7.6 /m<sup>2</sup></b>	<b>100%</b>			<b>2120</b>	

**CAUTION**  
THIS DRAWING IS BASED ON SURVEY THAT IS INCOMPLETE AND NOT VERIFIED. THE EXISTING SURFACE MAY VARY FROM THAT INDICATED AND SOME FEATURES MAY NOT BE SHOWN.

**WARNING**  
BEWARE OF UNDERGROUND/OVERHEAD SERVICES. THE LOCATIONS OF UNDERGROUND/OVERHEAD SERVICES ARE APPROXIMATE ONLY AND THEIR EXACT POSITION SHOULD BE PROVEN ON SITE. NO GUARANTEE IS GIVEN THAT ALL EXISTING SERVICES ARE SHOWN.



NOTE:  
PLACEMENT OF PLANTS WITHIN GB01 WETLAND RESTORATION TO BE INFORMAL TO ACHIEVE A "NATURAL" AESTHETIC TO REFLECT THE LOCAL CHARACTER OF THE YARRA RIVER

**NOT FOR CONSTRUCTION**  
**FINAL DESIGN**

© North East Link Program		DRAFTING CHECKED BY: F.YI		NAME: R.WILLIAMSON		DATE: 18/03/2026		DISCLAIMER: Conditions of Use. This Document has been developed for the purposes of the North East Link Project and Eastern Freeway Hoddle to Burke Upgrade. Recipients of this document: - Are subject to obligations of confidentiality in relation to this document, and information handling obligations indicated by the Protective Marking Security Classification as per Department of Transport Information Security Policy; and - May not rely upon the information contained in this document, and must rely absolutely on their own opinion and professional advice.				EASTERN FREEWAY UPGRADES (HODDLE TO BURKE) H600 - ZONE 4990 - PROJECT WIDE - HODDLE STREET TO BURKE ROAD LANDSCAPE - PROJECT WIDE PLANTING SCHEDULE - SHEET 02		DTP No.:					
C ISSUED FOR FINAL DESIGN		27/03/2026		DESIGNED BY: R.WILLIAMSON		18/03/2026		COORDINATE SYSTEM: MGA55/GDA94		Protective Marking: OFFICIAL: Sensitive		PROJECT CONTRACT: WEST		NELP DRAWING No.: NEL-WST-ASP-4990-ULS-DRG- 7022		SUIT. CODE: A3		REVISION: C	
B ISSUED FOR DETAILED DESIGN		18/12/2025		ENGINEERING CHECKED BY: J.GERALIS		18/03/2026		HEIGHT DATUM (m): AHD		DRAWN: F.Y.		SIZE: A3		SCALE: NTS		CAD FILE:			
A ISSUED FOR PRELIMINARY DESIGN		18/09/2025		APPROVED BY: R.GROCKE		18/03/2026													
REVISIONS		APPROVALS																	

Note: \* Indicates signed documents as drawings will not have wet signatures. This drawing must not be used for construction unless signed as approved by Project Approval

**OVERALL  
QUANTITY SCHEDULE GB02B  
HABITAT CORRIDOR - YARRA RIVER**

			TOTAL AREA (m2)			
			8995			
NAME	COMMON NAME	DENSITY	MIX (%)	MATURE SIZE (H x Wm)	INSTALLATION SIZE	QUANTITY
<b>MEDIUM SHRUB</b>						
<i>Acacia acinacea</i>	Gold Dust Wattle	1 /m²	7%	3 x 3	tubestock	630
<i>Acacia paradoxa</i>	Hedge Wattle	1 /m²	5%	4 x 4	tubestock	450
<i>Bursaria spinosa</i>	Sweet Bursaria	1 /m²	4%	6 x 3	tubestock	360
<i>Cassinia aculeata</i>	Common Cassinia	1 /m²	5%	4 x 2	tubestock	450
<i>Cassinia longifolia</i>	Shiny Cassinia	1 /m²	5%	4 x 3	tubestock	450
<i>Coprosma quadrifida</i>	Prickly Currant-bush	1 /m²	5%	4 x 1.5	tubestock	450
<i>Correa reflexa var. reflexa</i>	Native Fuchsia	4 /m²	5%	1.5 x 1.2	tubestock	1799
<i>Daviesia lactifolia</i>	Broad-leaved Bitter Pea	1 /m²	3%	3 x 2	tubestock	270
<i>Dodonaea viscosa spp. Cuneata</i>	Wedge-leaved Hop Bush	1 /m²	5%	3 x 1.3	tubestock	450
<i>Indigofera australis</i>	Australian Indigo	1 /m²	5%	2.5 x 2	tubestock	450
<i>Kunzea leptospermoides</i>	Yarra Burgan	1 /m²	5%	5 x 5	tubestock	450
<i>Leptospermum obovatum</i>	River Tea-tree	1 /m²	5%	3 x 3	tubestock	450
<i>Lomatia myricoides</i>	River Lomatia	1 /m²	3%	5 x 3	tubestock	270
<i>Meliccytus dentatus</i>	Tree Violet	1 /m²	5%	4 x 2.5	tubestock	450
<i>Olearia lirata</i>	Snow Daisy-bush	1 /m²	5%	4 x 3	tubestock	450
<i>Ozothamnus ferrugineus</i>	Tree Everlasting	1 /m²	5%	4 x 4	tubestock	450
<i>Pomaderris aspera</i>	Hazel Pomaderris	1 /m²	3%	10 x 5	tubestock	270
<b>LOW COVER</b>						
<i>Acaena novae-zelandiae</i>	Bidgee Widgee	6 /m²	10%	0.3 x 0.9	tubestock	5397
<b>TUSSOCK / GRASS</b>						
<i>Lomandra longifolia</i>	Spiny-headed Mat-Rush	6 /m²	10%	1 x 1.2	tubestock	5397
<b>TOTAL</b>		#	100%			19339

**CAUTION**  
THIS DRAWING IS BASED ON SURVEY THAT IS INCOMPLETE AND NOT VERIFIED. THE EXISTING SURFACE MAY VARY FROM THAT INDICATED AND SOME FEATURES MAY NOT BE SHOWN.

**WARNING**  
BEWARE OF UNDERGROUND/OVERHEAD SERVICES THE LOCATIONS OF UNDERGROUND/OVERHEAD SERVICES ARE APPROXIMATE ONLY AND THEIR EXACT POSITION SHOULD BE PROVEN ON SITE. NO GUARANTEE IS GIVEN THAT ALL EXISTING SERVICES ARE SHOWN.



**NOT FOR CONSTRUCTION**

**FINAL DESIGN**

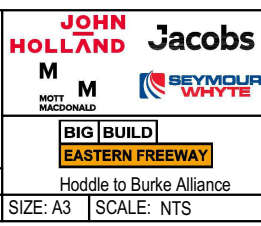
© North East Link Program

REVISIONS	DATE	DESCRIPTION
C	27/03/2026	ISSUED FOR FINAL DESIGN
B	18/12/2025	ISSUED FOR DETAILED DESIGN
A	18/09/2025	ISSUED FOR PRELIMINARY DESIGN

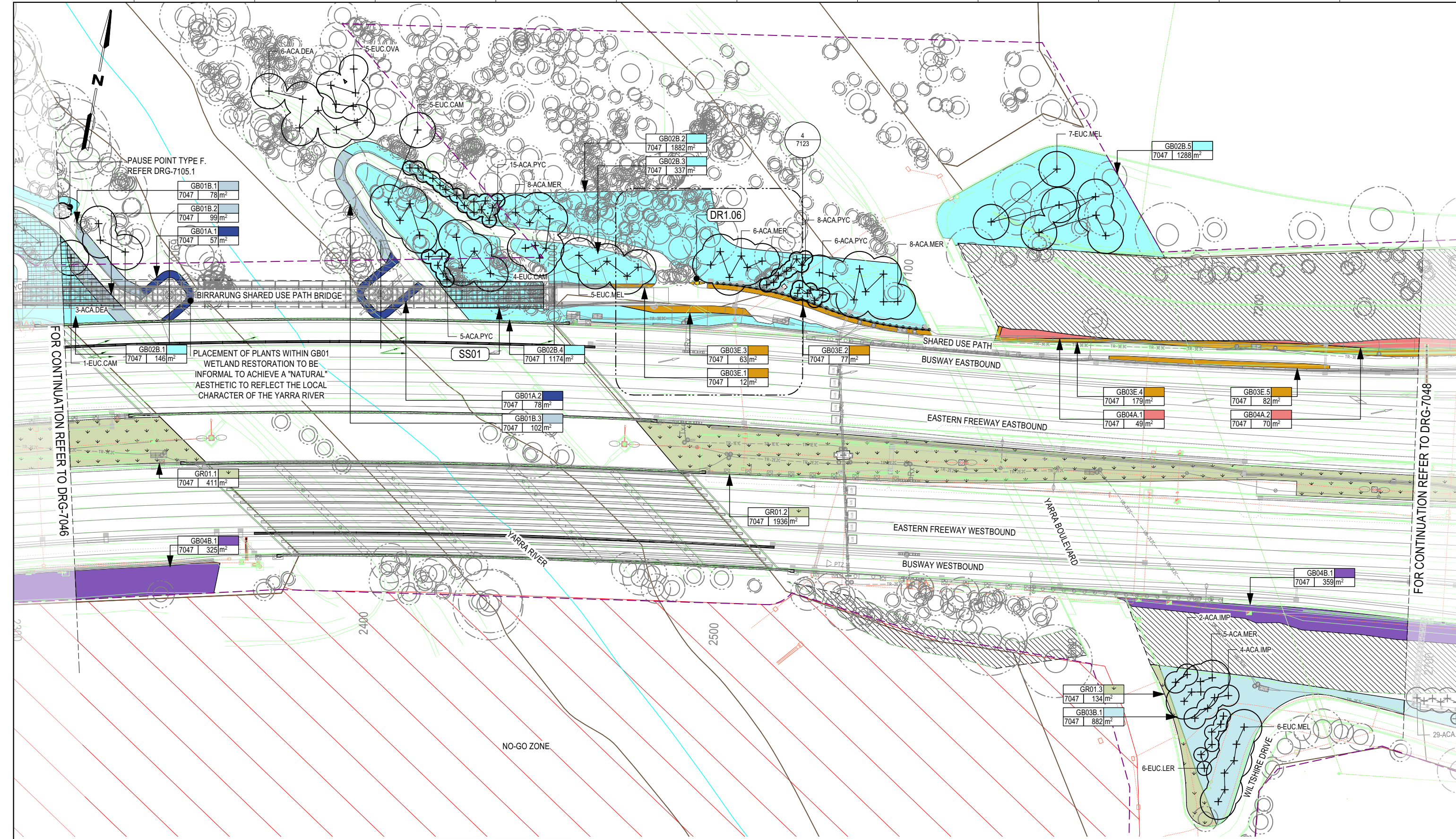
NAME	DATE
DRAFTING CHECKED BY: F.YI	18/03/2026
DESIGNED BY: R.WILLIAMSON	18/03/2026
ENGINEERING CHECKED BY: J.GERALIS	18/03/2026
VERIFIED BY: J.GERALIS	18/03/2026
APPROVED BY: R.GROCKE	18/03/2026

**DISCLAIMER**  
Conditions of Use. This Document has been developed for the purposes of the North East Link Project and Eastern Freeway Hoddle to Burke Upgrade.  
Recipients of this document:  
- Are subject to obligations of confidentiality in relation to this document, and information handling obligations indicated by the Protective Marking Security Classification as per Department of Transport Information Security Policy; and  
- May not rely on the information contained in this document, and must rely absolutely on their own opinion and professional advice.

COORDINATE SYSTEM: MGA55/GDA94  
HEIGHT DATUM (m): AHD  
DRAWN: F.Y.



EASTERN FREEWAY UPGRADES (HODDLE TO BURKE) H600 - ZONE 4990 - PROJECT WIDE - HODDLE STREET TO BURKE ROAD LANDSCAPE - PROJECT WIDE		PLANTING SCHEDULE - SHEET 04	
PROJECT CONTRACT: WEST	NELP DRAWING No.: NEL-WST-ASP-4990-ULS-DRG- 7024	SUIT. CODE: A3	REVISION: C



**CAUTION**  
THIS DRAWING IS BASED ON SURVEY THAT IS INCOMPLETE AND NOT VERIFIED. THE EXISTING SURFACE MAY VARY FROM THAT INDICATED AND SOME FEATURES MAY NOT BE SHOWN.

**WARNING**  
BEWARE OF UNDERGROUND/OVERHEAD SERVICES. THE LOCATIONS OF UNDERGROUND/OVERHEAD SERVICES ARE APPROXIMATE ONLY AND THEIR EXACT POSITION SHOULD BE PROVEN ON SITE. NO GUARANTEE IS GIVEN THAT ALL EXISTING SERVICES ARE SHOWN.

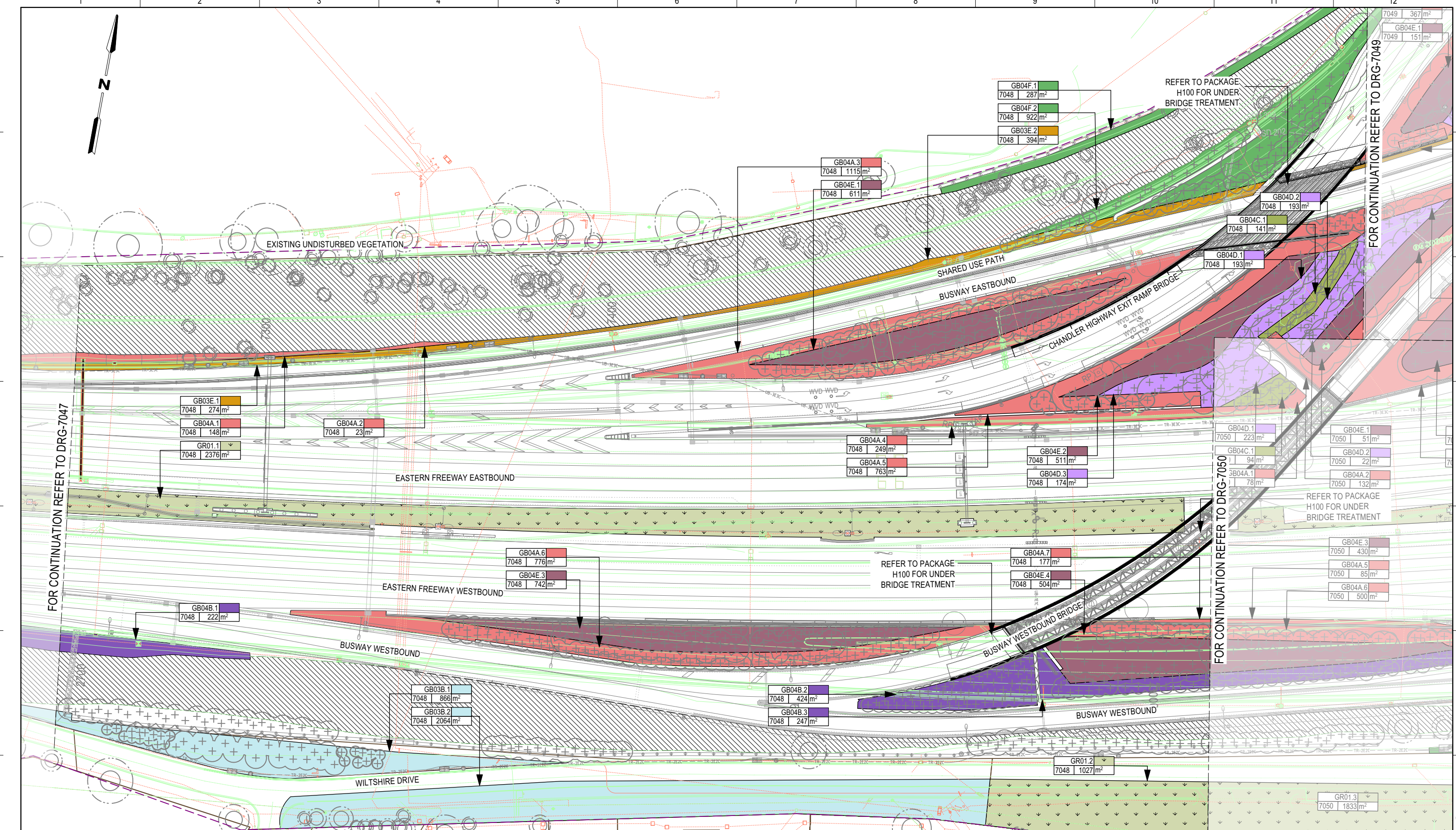


NOTE:  
EXISTING RETAINED TREES ARE SUBJECT TO ONGOING REVIEW. ONLY RETAINED TREES IN PROXIMITY TO THE EXTENT OF WORKS ARE SHOWN.

**NOT FOR CONSTRUCTION**  
**FINAL DESIGN**



REVISIONS C ISSUED FOR FINAL DESIGN 27/03/2026 B ISSUED FOR DETAILED DESIGN 18/12/2025 A ISSUED FOR PRELIMINARY DESIGN 18/09/2025		NAME DATE DRAFTING CHECKED BY F.YI 18/03/2026 DESIGNED BY R.WILLIAMSON 18/03/2026 ENGINEERING CHECKED BY J.GERALIS 18/03/2026 VERIFIED BY J.GERALIS 18/03/2026 APPROVED BY R.GROCKE 18/03/2026		DISCLAIMER Conditions of Use: This Document has been developed for the purposes of the North East Link Project and Eastern Freeway Hoddle to Burke Upgrade. Recipients of this document: - Are subject to obligations of confidentiality in relation to this document, and information handling obligations indicated by the Protective Marking Security Classification as per Department of Transport Information Security Policy; and - May not rely upon the information contained in this document, and must rely absolutely on their own opinion and professional advice.		<b>JOHN HOLLAND</b> <b>Jacobs</b> <b>MOTT MACDONALD</b> <b>SEYMOUR WHYTE</b> <b>BIG BUILD EASTERN FREEWAY</b> Hoddle to Burke Alliance		<b>VIDA Roads</b> VICTORIAN INFRASTRUCTURE DELIVERY AUTHORITY VICTORIA'S BIG BUILD VICTORIA Government		EASTERN FREEWAY UPGRADES (HODDLE TO BURKE) H600 - ZONE 4990 - PROJECT WIDE - HODDLE STREET TO BURKE ROAD LANDSCAPE - PROJECT WIDE LANDSCAPE PLAN - SHEET 07		PROJECT CONTRACT: WEST NELP DRAWING No.: NEL-WST-ASP-4990-ULS-DRG- 7047 SUIT. CODE: A3 REVISION: C	
--	--	---	--	---	--	---	--	---	--	--	--	---	--



FOR CONTINUATION REFER TO DRG-7047

FOR CONTINUATION REFER TO DRG-7050

FOR CONTINUATION REFER TO DRG-7049

**CAUTION**

THIS DRAWING IS BASED ON SURVEY THAT IS INCOMPLETE AND NOT VERIFIED. THE EXISTING SURFACE MAY VARY FROM THAT INDICATED AND SOME FEATURES MAY NOT BE SHOWN.

**WARNING**

BEWARE OF UNDERGROUND/OVERHEAD SERVICES. THE LOCATIONS OF UNDERGROUND/OVERHEAD SERVICES ARE APPROXIMATE ONLY AND THEIR EXACT POSITION SHOULD BE PROVEN ON SITE. NO GUARANTEE IS GIVEN THAT ALL EXISTING SERVICES ARE SHOWN.



NOTE:  
FOR DETAILED TREE PLANTING PLANS REFER TO  
NEL-WST-ASP-4990-ULS-DRG-7061

NOTE:  
EXISTING RETAINED TREES ARE SUBJECT TO ONGOING REVIEW. ONLY  
RETAINED TREES IN PROXIMITY TO THE EXTENT OF WORKS ARE SHOWN.

**NOT FOR CONSTRUCTION**

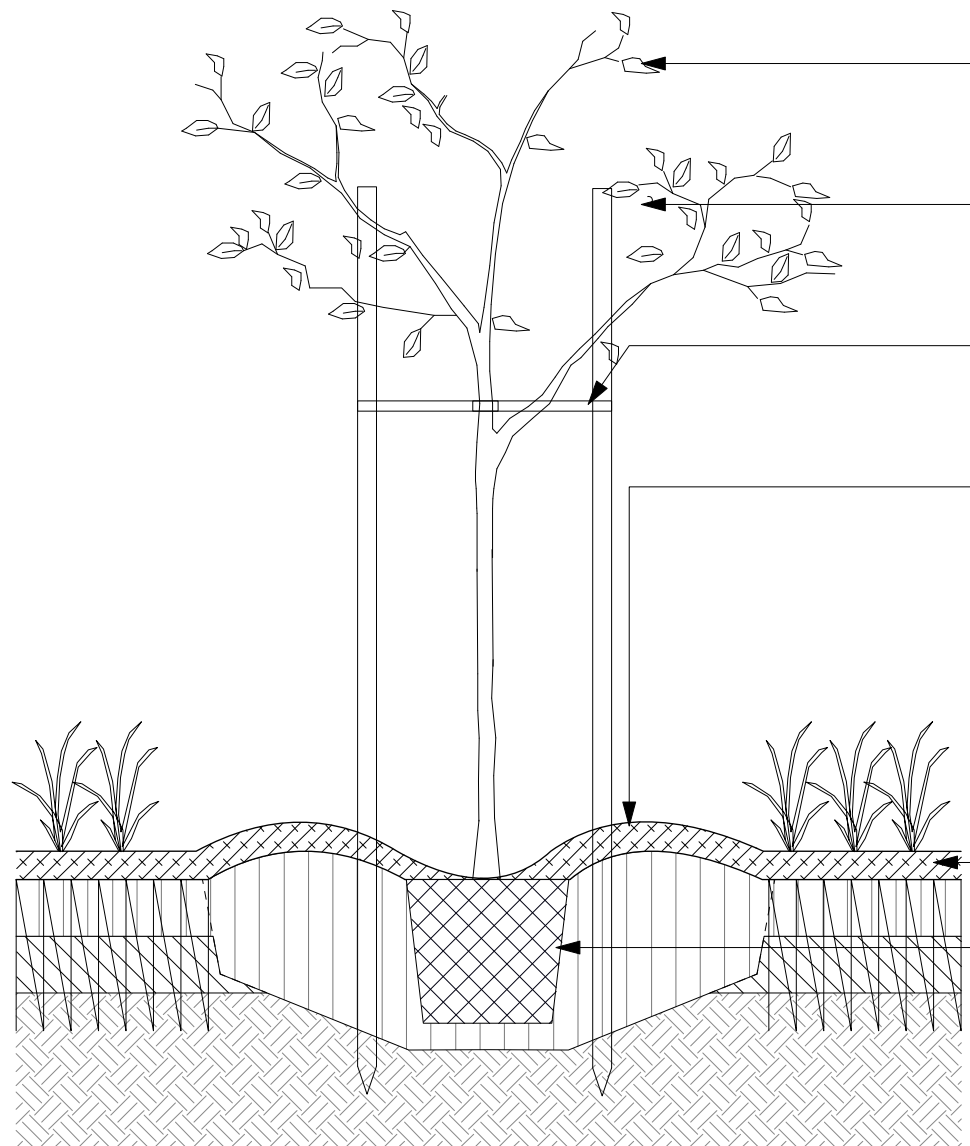
**FINAL DESIGN**



DTP No.:

© North East Link Program		DRAFTING CHECKED BY: F.YI		NAME: R.WILLIAMSON		DATE: 18/03/2026		DISCLAIMER				EASTERN FREEWAY UPGRADES (HODDLE TO BURKE)	
C ISSUED FOR FINAL DESIGN		27/03/2026		DESIGNED BY: R.WILLIAMSON		18/03/2026		<p>Conditions of Use: This Document has been developed for the purposes of the North East Link Project and Eastern Freeway Hoddle to Burke Upgrade.</p> <p>Recipients of this document: - Are subject to obligations of confidentiality in relation to this document, and information handling obligations indicated by the Protective Marking Security Classification as per Department of Transport Information Security Policy; and - May not rely upon the information contained in this document, and must rely absolutely on their own opinion and professional advice.</p>				H600 - ZONE 4990 - PROJECT WIDE - HODDLE STREET TO BURKE ROAD	
B ISSUED FOR DETAILED DESIGN		18/12/2025		ENGINEERING CHECKED BY: J.GERALIS		18/03/2026		COORDINATE SYSTEM: MGA55/GDA94				LANDSCAPE - PROJECT WIDE	
A ISSUED FOR PRELIMINARY DESIGN		18/09/2025		VERIFIED BY: R.GROCKE		18/03/2026		HEIGHT DATUM (m): AHD		<p>Protective Marking: OFFICIAL: Sensitive</p>		LANDSCAPE PLAN - SHEET 08	
REVISIONS		APPROVALS		APPROVED BY: R.GROCKE		18/03/2026		DRAWN: F.Y.		PROJECT CONTRACT: WEST		SUIT. CODE REVISION	
										NELP DRAWING No.: NEL-WST-ASP-4990-ULS-DRG- 7048		A3 C	

Note: \* Indicates signed documents as drawings will not have wet signatures. This drawing must not be used for construction unless signed as approved by Project Approval



SEMI-ADVANCED TREE PLANTING REFER TO PLANT SCHEDULE AND PLANTING PLAN FOR SPECIES

70X70X2000mm CLASS 1 HARDWOOD POSTS DRIVEN 700mm BELOW FINISH LEVELS. ENSURE POSTS ARE VERTICAL AFTER BEING TIED. REUSED OR RECYCLED TIMBER HARDWOOD POSTS TO BE CONSIDERED. FSC CERTIFIED.

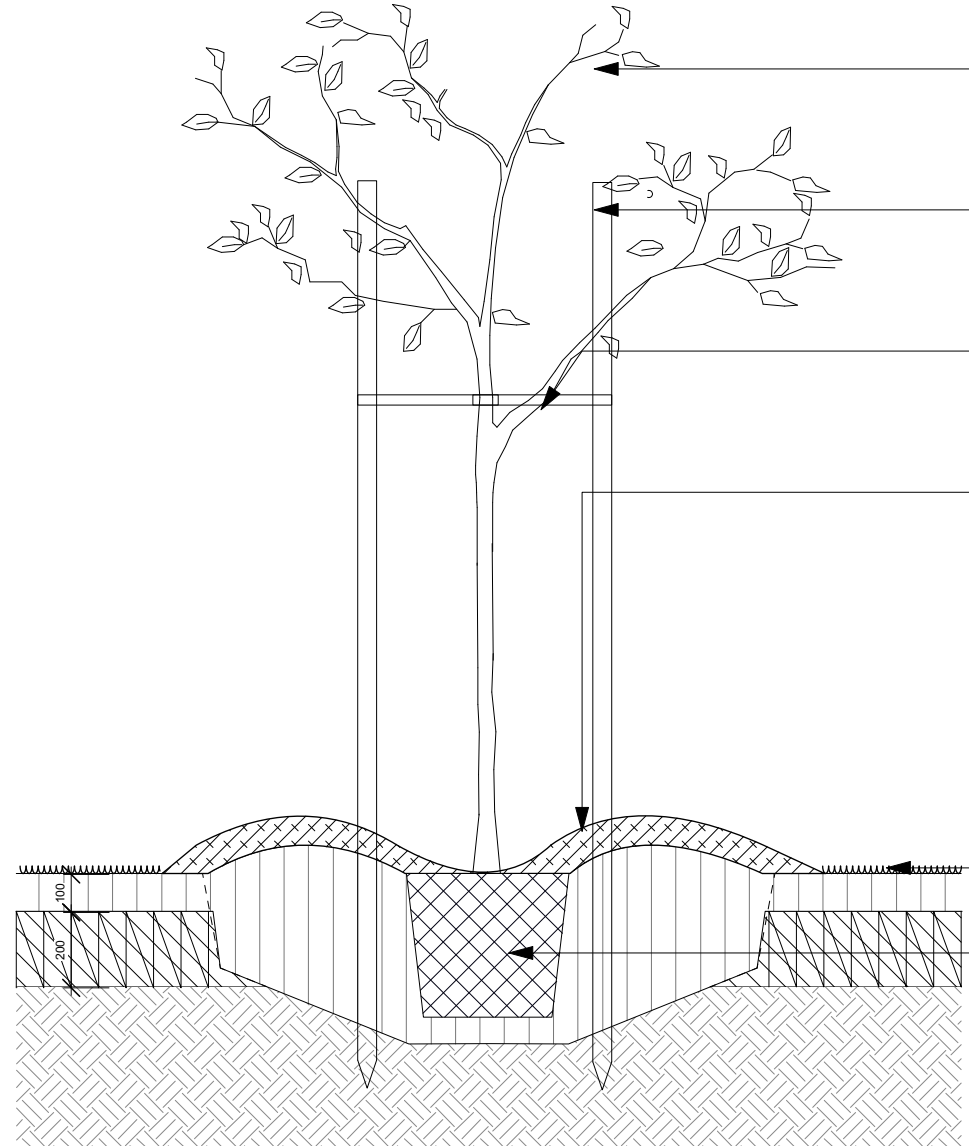
FOR TREES > 2.5m HIGH: REINFORCED RUBBER TIE WITH GALVANIZED WIRE FOR TREES < 2.5m HIGH: 50mm HESSIAN WEBBING STAPLED TO STAKE

FORM MINIMUM 1200mm DIAMETER AND 75mm HIGH SOIL BERM AROUND TREE TO DIRECT WATER INTO ROOT BALL DIAMETER OF BERM WILL VARY WITH ROOTBALL SIZE 75MM MULCH - SOIL MUST BE KEPT OFF ROOT BALL AND CLEAR OF TREE TRUNK

ADJACENT SURFACE VARIES. REFER TO PLANS

ROOT BALL OF 45L TREE AS SCHEDULED

**1** 45L TREE PLANTING IN GARDEN BED - TYP SECTION  
Scale: 1:20



SEMI-ADVANCED TREE PLANTING REFER TO PLANT SCHEDULE AND PLANTING PLAN FOR SPECIES

70X70X2000mm CLASS 1 HARDWOOD POSTS DRIVEN 700mm BELOW FINISH LEVELS. ENSURE POSTS ARE VERTICAL AFTER BEING TIED. REUSED OR RECYCLED TIMBER HARDWOOD POSTS TO BE CONSIDERED. FSC CERTIFIED.

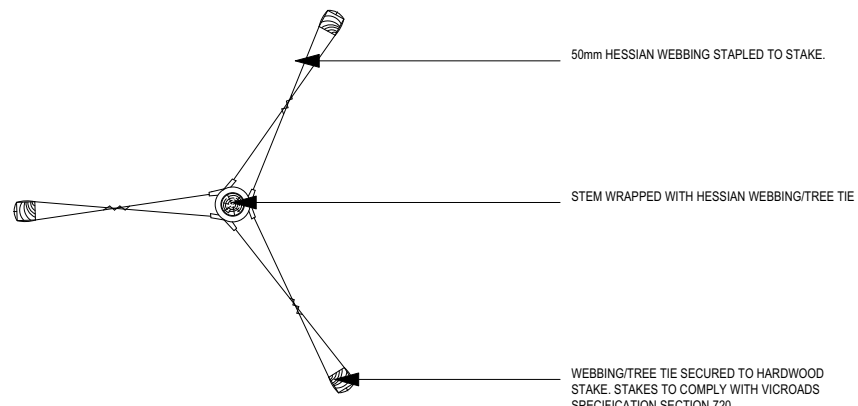
FOR TREES > 2.5m HIGH: REINFORCED RUBBER TIE WITH GALVANIZED WIRE FOR TREES < 2.5m HIGH: 50mm HESSIAN WEBBING STAPLED TO STAKE

FORM MINIMUM 1200mm DIAMETER AND 75mm HIGH SOIL BERM AROUND TREE TO DIRECT WATER INTO ROOT BALL DIAMETER OF BERM WILL VARY WITH ROOTBALL SIZE 75MM MULCH - SOIL MUST BE KEPT OFF ROOT BALL AND CLEAR OF TREE TRUNK

ADJACENT SURFACE VARIES. REFER TO PLANS

ROOT BALL OF 45L TREE AS SCHEDULED

**2** 45L TREE PLANTING IN TURF - TYP SECTION  
Scale: 1:20



50mm HESSIAN WEBBING STAPLED TO STAKE.

STEM WRAPPED WITH HESSIAN WEBBING/TREE TIE

WEBBING/TREE TIE SECURED TO HARDWOOD STAKE. STAKES TO COMPLY WITH VICROADS SPECIFICATION SECTION 720.

**3** TREE SUPPORT STAKES & HESSIAN TIES - TYP PLAN  
Scale: 1:20

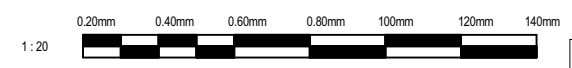
**CAUTION**  
THIS DRAWING IS BASED ON SURVEY THAT IS INCOMPLETE AND NOT VERIFIED. THE EXISTING SURFACE MAY VARY FROM THAT INDICATED AND SOME FEATURES MAY NOT BE SHOWN.

**WARNING**  
BEWARE OF UNDERGROUND/OVERHEAD SERVICES THE LOCATIONS OF UNDERGROUND/OVERHEAD SERVICES ARE APPROXIMATE ONLY AND THEIR EXACT POSITION SHOULD BE PROVEN ON SITE. NO GUARANTEE IS GIVEN THAT ALL EXISTING SERVICES ARE SHOWN.



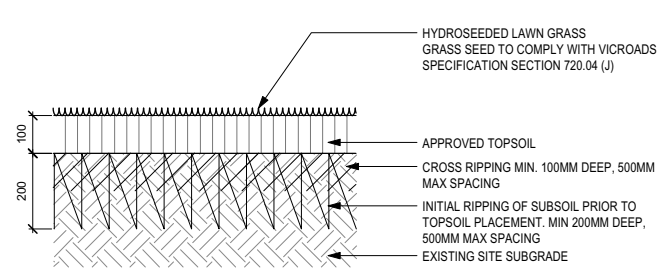
NOTE:  
LANDSCAPE WORKS TO MEET OR EXCEED WHERE NOTED VICROADS SPECIFICATION SECTION 720 REQUIREMENTS

**NOT FOR CONSTRUCTION**  
**FINAL DESIGN**

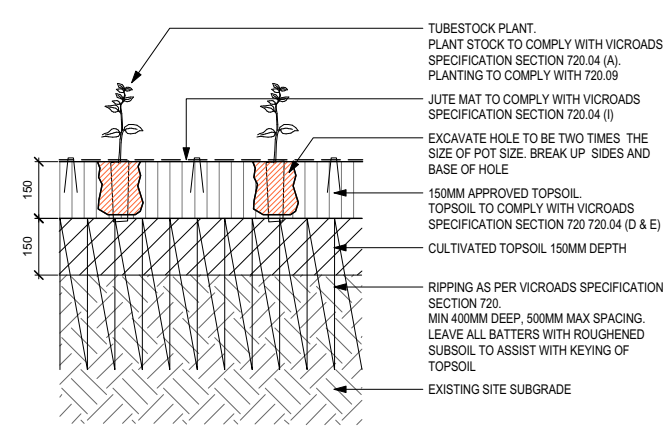


<p>© North East Link Program</p>		<p>DRAFTING CHECKED BY: F.YI</p>		<p>NAME: R.WILLIAMSON</p>		<p>DATE: 18/03/2026</p>		<p>DISCLAIMER</p> <p>Conditions of Use: This Document has been developed for the purposes of the North East Link Project and Eastern Freeway Hoddle to Burke Upgrade.</p> <p>Recipients of this document: - Are subject to obligations of confidentiality in relation to this document, and information handling obligations indicated by the Protective Marking Security Classification as per Department of Transport Information Security Policy; and - May not rely upon the information contained in this document, and must rely absolutely on their own opinion and professional advice.</p>		<p>JOHN HOLLAND Jacobs</p> <p>MOTT MACDONALD SEYMOUR WHYTE</p> <p><b>BIG BUILD</b> EASTERN FREEWAY</p> <p>Hoddle to Burke Alliance</p>		<p><b>YIDA Roads</b></p> <p>VICTORIAN INFRASTRUCTURE DELIVERY AUTHORITY</p> <p>VICTORIA'S <b>BIG BUILD</b></p> <p>VICTORIA Government</p>		<p>EASTERN FREEWAY UPGRADES (HODDLE TO BURKE) H600 - ZONE 4990 - PROJECT WIDE - HODDLE STREET TO BURKE ROAD LANDSCAPE - PROJECT WIDE <b>LANDSCAPE DETAILS - SHEET 01</b></p>			
<p>C ISSUED FOR FINAL DESIGN</p>		<p>27/03/2026</p>		<p>DESIGNED BY: R.WILLIAMSON</p>		<p>18/03/2026</p>		<p>COORDINATE SYSTEM: MGA55/GDA94</p>		<p>PROJECT CONTRACT: WEST</p>		<p>NELP DRAWING No.: NEL-WST-ASP-4990-ULS-DRG- 7101</p>		<p>SUIT. CODE: A3</p>			
<p>B ISSUED FOR DETAILED DESIGN</p>		<p>18/12/2025</p>		<p>ENGINEERING CHECKED BY: J.GERALIS</p>		<p>18/03/2026</p>		<p>HEIGHT DATUM (m): AHD</p>		<p>DRAWN: F.Y.</p>		<p>SCALE: 1:20</p>		<p>REVISION: C</p>			
<p>A ISSUED FOR PRELIMINARY DESIGN</p>		<p>18/09/2025</p>		<p>VERIFIED BY: R.GROCKE</p>		<p>18/03/2026</p>		<p>APPROVALS</p>		<p>CAD FILE:</p>		<p>PROJECT CONTRACT: WEST</p>		<p>SUIT. CODE: A3</p>			
<p>REVISIONS</p>		<p>APPROVALS</p>		<p>APPROVALS</p>		<p>APPROVALS</p>		<p>APPROVALS</p>		<p>APPROVALS</p>		<p>APPROVALS</p>		<p>APPROVALS</p>			

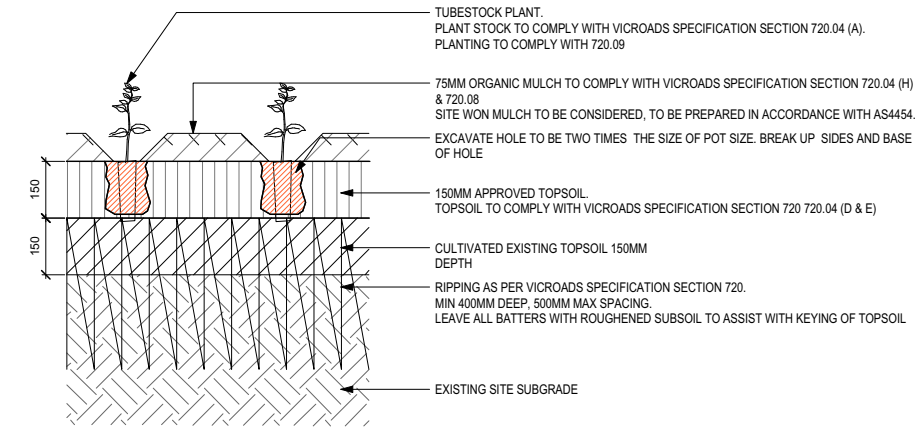
Note: \* Indicates signed documents as drawings will not have wet signatures. This drawing must not be used for construction unless signed as approved by Project Approval



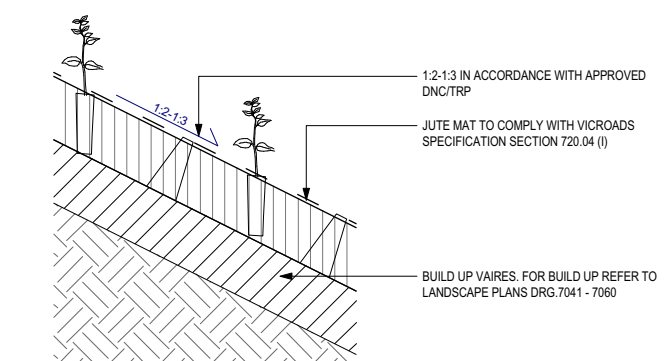
**1** GR01 - MOWABLE TURF - TYP DETAIL  
Scale: 1:10



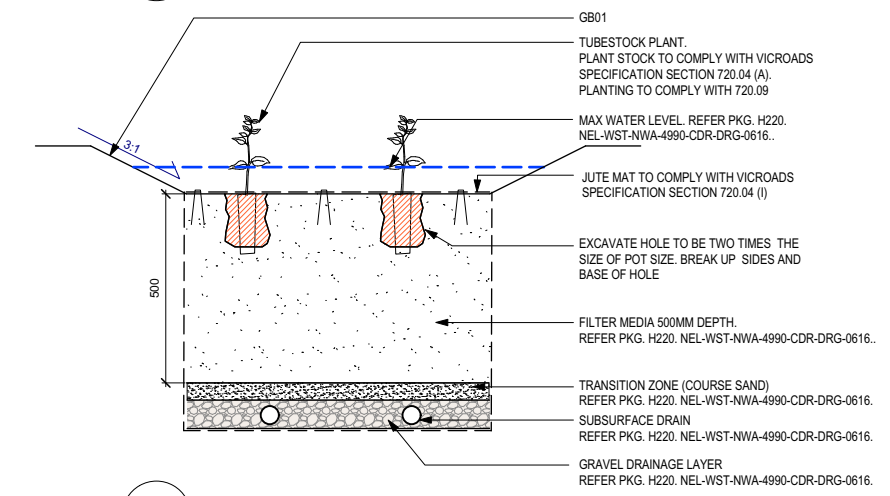
**2** GB01 - TUBESTOCK PLANTING TO WETLAND - TYP DETAIL  
Scale: 1:10



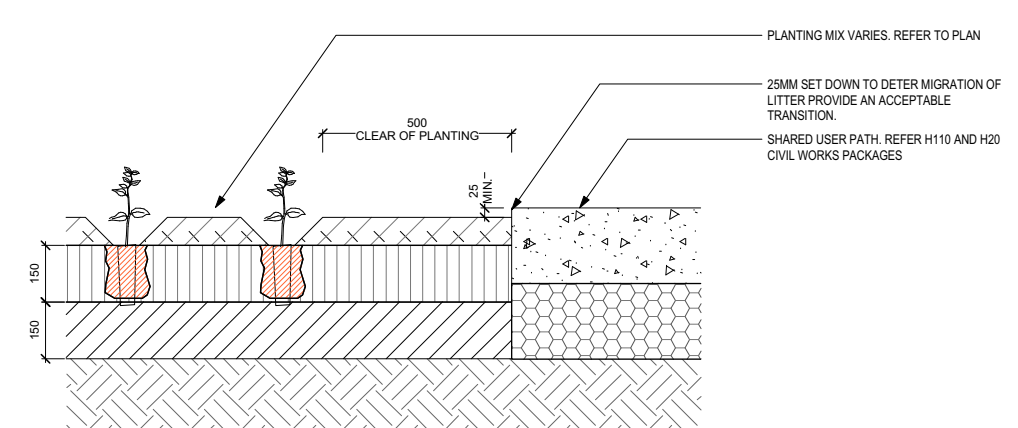
**3** GB02-5 - TUBESTOCK PLANTING TO GARDEN BED - TYP DETAIL  
Scale: 1:10



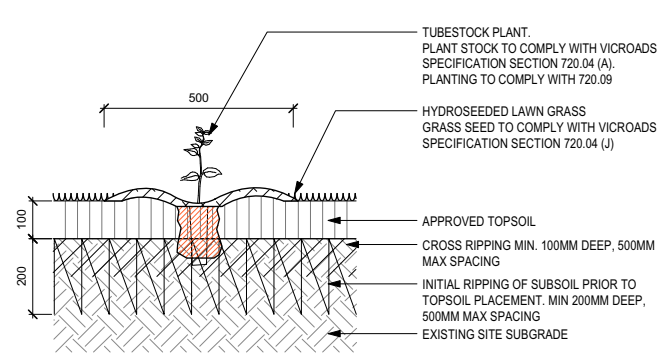
**4** SS01 - SOIL STABILISATION - JUTE MAT - TYP DETAIL  
Scale: 1:10



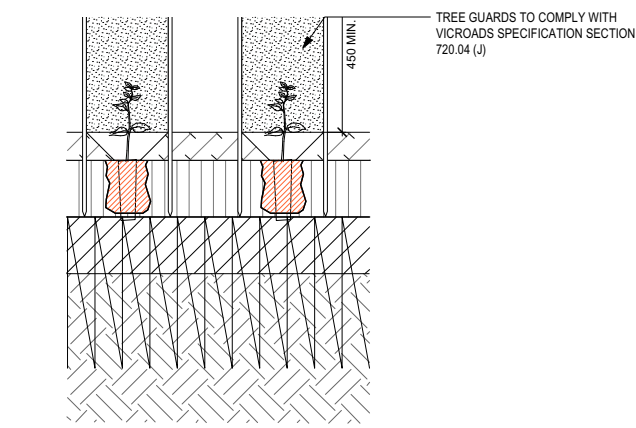
**5** GB01C - PLANTING TO BIORETENTION - TYP DETAIL  
Scale: 1:10



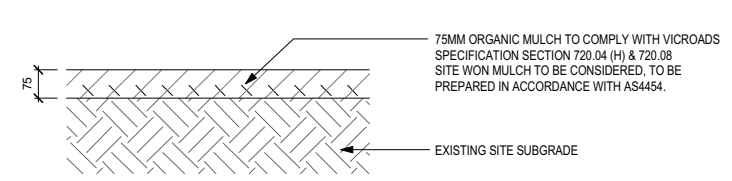
**6** INTERFACE PLANTING TO SUP - TYP DETAIL  
Scale: 1:10



**7** TUBESTOCK TREE PLANTING IN GRASS WITH MULCH RING  
Scale: 1:10



**8** TREE GUARD TO TUBESTOCK AND POTTED TREES  
Scale: 1:10



**9** MU01 - ORGANIC MULCH  
Scale: 1:10

**CAUTION**  
THIS DRAWING IS BASED ON SURVEY THAT IS INCOMPLETE AND NOT VERIFIED. THE EXISTING SURFACE MAY VARY FROM THAT INDICATED AND SOME FEATURES MAY NOT BE SHOWN.

**WARNING**  
BEWARE OF UNDERGROUND/OVERHEAD SERVICES. THE LOCATIONS OF UNDERGROUND/OVERHEAD SERVICES ARE APPROXIMATE ONLY AND THEIR EXACT POSITION SHOULD BE PROVEN ON SITE. NO GUARANTEE IS GIVEN THAT ALL EXISTING SERVICES ARE SHOWN.



NOTE:  
LANDSCAPE WORKS TO MEET OR EXCEED WHERE NOTED VICROADS SPECIFICATION SECTION 720 REQUIREMENTS

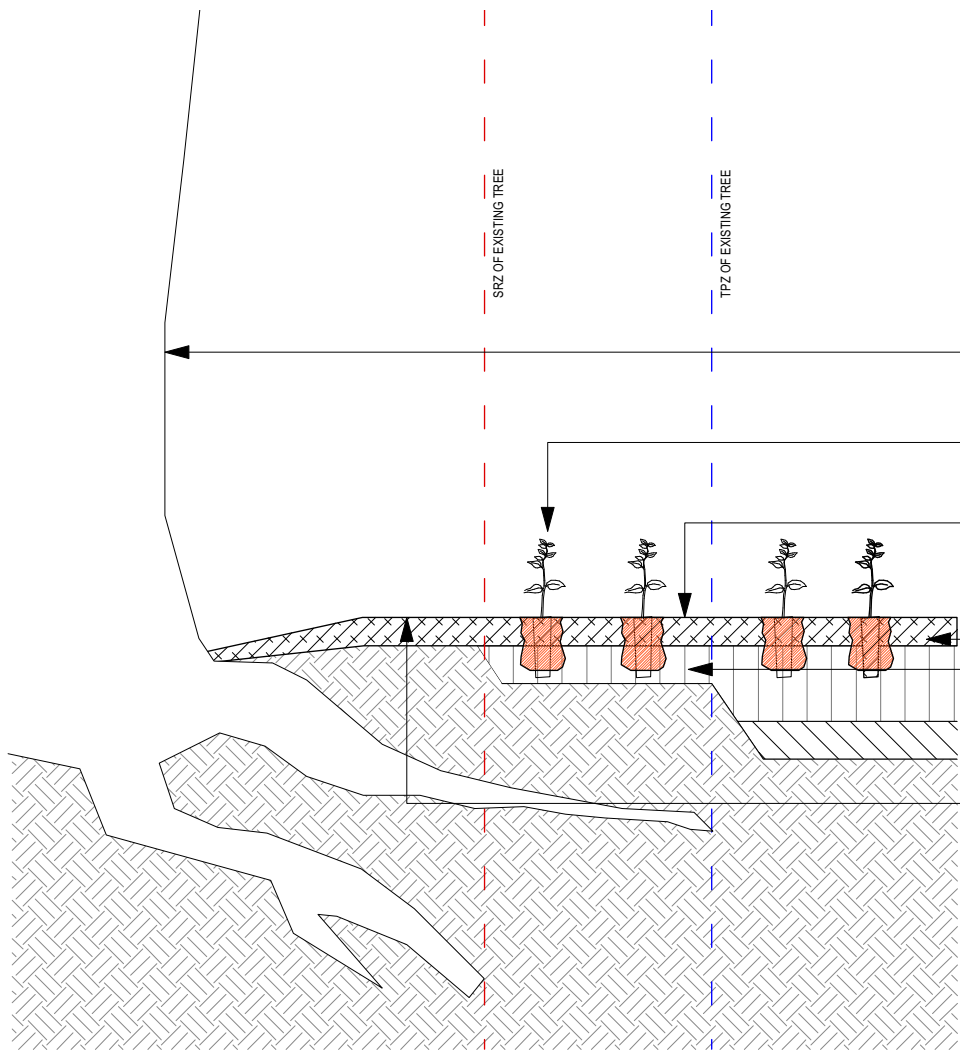
**NOT FOR CONSTRUCTION**

**FINAL DESIGN**



© North East Link Program		DRAFTING CHECKED BY: F.YI		NAME: F.YI		DATE: 18/03/2026		DISCLAIMER				EASTERN FREEWAY UPGRADES (HODDLE TO BURKE) H600 - ZONE 4990 - PROJECT WIDE - HODDLE STREET TO BURKE ROAD LANDSCAPE - PROJECT WIDE	
C ISSUED FOR FINAL DESIGN		27/03/2026		DESIGNED BY: R.WILLIAMSON		18/03/2026		Conditions of Use: This Document has been developed for the purposes of the North East Link Project and Eastern Freeway Hoddle to Burke Upgrade.				LANDSCAPE DETAILS - SHEET 02	
B ISSUED FOR DETAILED DESIGN		18/12/2025		ENGINEERING CHECKED BY: J.GERALIS		18/03/2026		Recipients of this document: - Are subject to obligations of confidentiality in relation to this document, and information handling obligations indicated by the Protective Marking Security Classification as per Department of Transport Information Security Policy; and - May not rely upon the information contained in this document, and must rely absolutely on their own opinion and professional advice.				PROJECT CONTRACT: WEST	
A ISSUED FOR PRELIMINARY DESIGN		18/09/2025		VERIFIED BY: R.GROCKE		18/03/2026		COORDINATE SYSTEM: MGA55/GDA94				NELP DRAWING No.: NEL-WST-ASP-4990-ULS-DRG- 7102	
REVISIONS		APPROVALS		HEIGHT DATUM (m): AHD		DRAWN: F.Y.		Hoddle to Burke Alliance				SUIT. CODE: A3	
								SIZE: A3				REVISION: C	
								SCALE: 1:10				DTP No.:	

Note: \* Indicates signed documents as drawings will not have wet signatures.  
This drawing must not be used for construction unless signed as approved by Project Approval



EXISTING TREE. REFER TO CEMP FOR REQUIREMENTS RELATED TO ADJACENT WORKS

PLANTING WITHIN TPZ OF EXISTING TREE TO BE EXCAVATED USING HAND TOOLS ONLY AS PER ARBORIST REQUIREMENTS

ORGANIC MULCH AS SPECIFIED. MULCH APPLIED TO EXISTING TREE BASE MUST BE APPLIED IN ACCORDANCE WITH ARBORIST REQUIREMENTS

SS01. REFER TO DRG-37102

75mm TOPSOIL MAX WITHIN TPZ

NO PLANTING WITHIN SRZ OF EXISTING TREES. PROVIDE MU01 ORGANIC MULCH TO TOP OF EXISTING SOIL TO ARBORIST REQUIREMENTS

NOTE:  
TREE ROOTS MAY EXTEND FURTHER THAN SHOWN ON SRZ  
ANY ROOTS BEYOND THE SRZ PROPOSED TO BE REMOVED  
SHOULD BE CONSULTED WITH THE PROJECT ARBORIST

**1** PLANTING TO EXISTING TREE - TYP INTERFACE  
Scale: 1:20

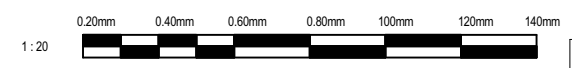
**CAUTION**  
THIS DRAWING IS BASED ON SURVEY THAT IS INCOMPLETE AND NOT VERIFIED. THE EXISTING SURFACE MAY VARY FROM THAT INDICATED AND SOME FEATURES MAY NOT BE SHOWN.

**WARNING**  
BEWARE OF UNDERGROUND/OVERHEAD SERVICES. THE LOCATIONS OF UNDERGROUND/OVERHEAD SERVICES ARE APPROXIMATE ONLY AND THEIR EXACT POSITION SHOULD BE PROVEN ON SITE. NO GUARANTEE IS GIVEN THAT ALL EXISTING SERVICES ARE SHOWN.



**NOT FOR CONSTRUCTION**

**FINAL DESIGN**



DTP No.:

REVISIONS	DATE	DESCRIPTION
C	27/03/2026	ISSUED FOR FINAL DESIGN
B	18/12/2025	ISSUED FOR DETAILED DESIGN
A	18/09/2025	ISSUED FOR PRELIMINARY DESIGN

NAME	DATE
DRAFTING CHECKED BY: F.YI	18/03/2026
DESIGNED BY: R.WILLIAMSON	18/03/2026
ENGINEERING CHECKED BY: J.GERALIS	18/03/2026
VERIFIED BY: R.GROCKE	18/03/2026
APPROVED BY:	

**DISCLAIMER**  
Conditions of Use. This Document has been developed for the purposes of the North East Link Project and Eastern Freeway Hoddle to Burke Upgrade.  
Recipients of this document:  
- Are subject to obligations of confidentiality in relation to this document, and information handling obligations indicated by the Protective Marking Security Classification as per Department of Transport Information Security Policy; and  
- May not rely upon the information contained in this document, and must rely absolutely on their own opinion and professional advice.

COORDINATE SYSTEM: MGA55/GDA94  
HEIGHT DATUM (m): AHD  
DRAWN: F.Y.

**JOHN HOLLAND** **Jacobs**  
**MOTT MACDONALD** **SEYMOUR WHYTE**  
**BIG BUILD**  
**EASTERN FREEWAY**  
Hoddle to Burke Alliance

**VIDA Roads**  
VICTORIAN INFRASTRUCTURE DELIVERY AUTHORITY  
VICTORIA'S BIG BUILD  
VICTORIA Government  
Protective Marking: **OFFICIAL: Sensitive**  
CAD FILE:

EASTERN FREEWAY UPGRADES (HODDLE TO BURKE) H600 - ZONE 4990 - PROJECT WIDE - HODDLE STREET TO BURKE ROAD LANDSCAPE - PROJECT WIDE LANDSCAPE DETAILS - SHEET 03		PROJECT CONTRACT: WEST	NELP DRAWING No.: NEL-WST-ASP-4990-ULS-DRG- 7103	SUIT. CODE A3	REVISION C
---	--	---------------------------	---	------------------	---------------

Note: \* Indicates signed documents as drawings will not have wet signatures. This drawing must not be used for construction unless signed as approved by Project Approval