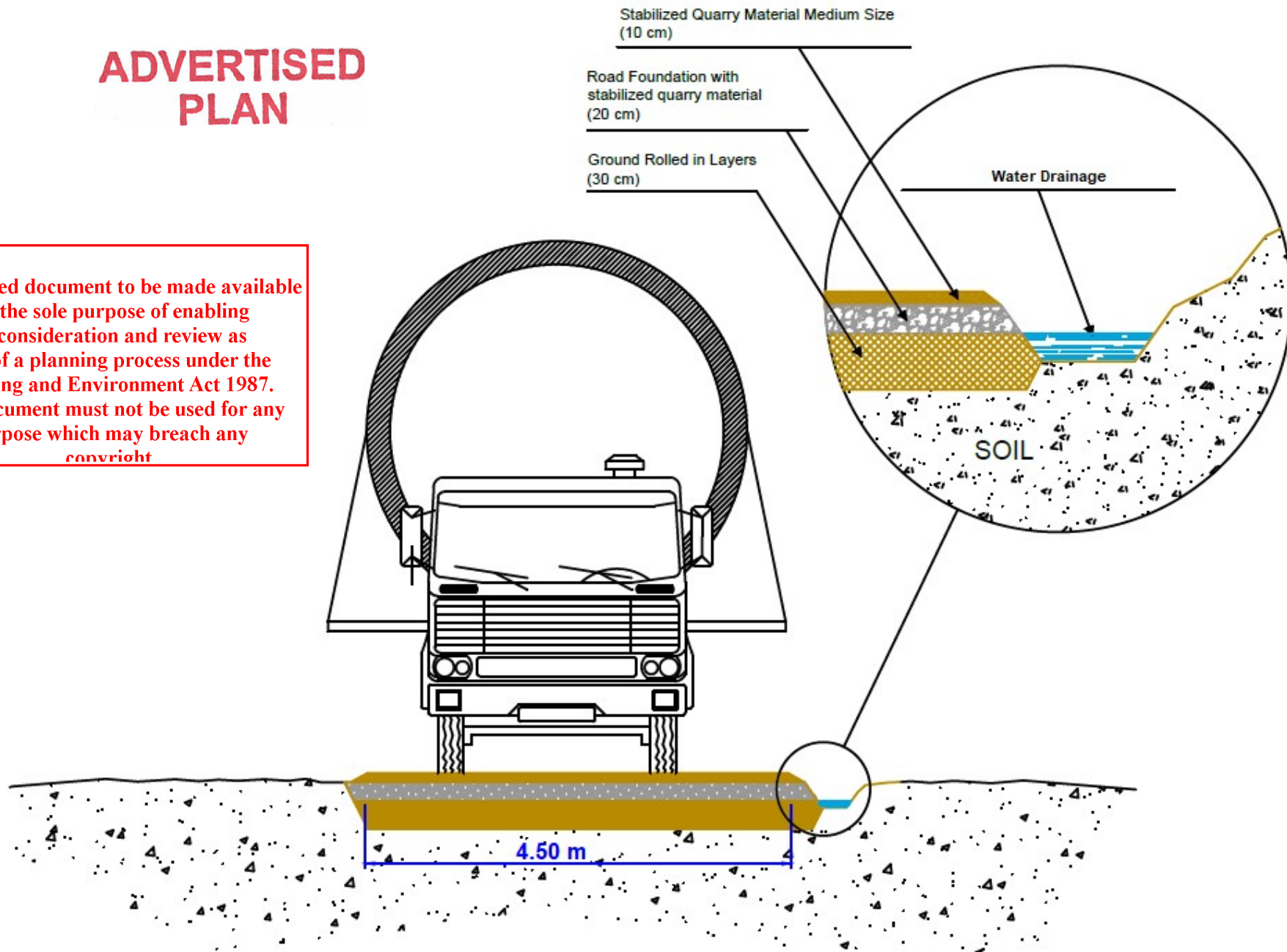


ADVERTISED PLAN

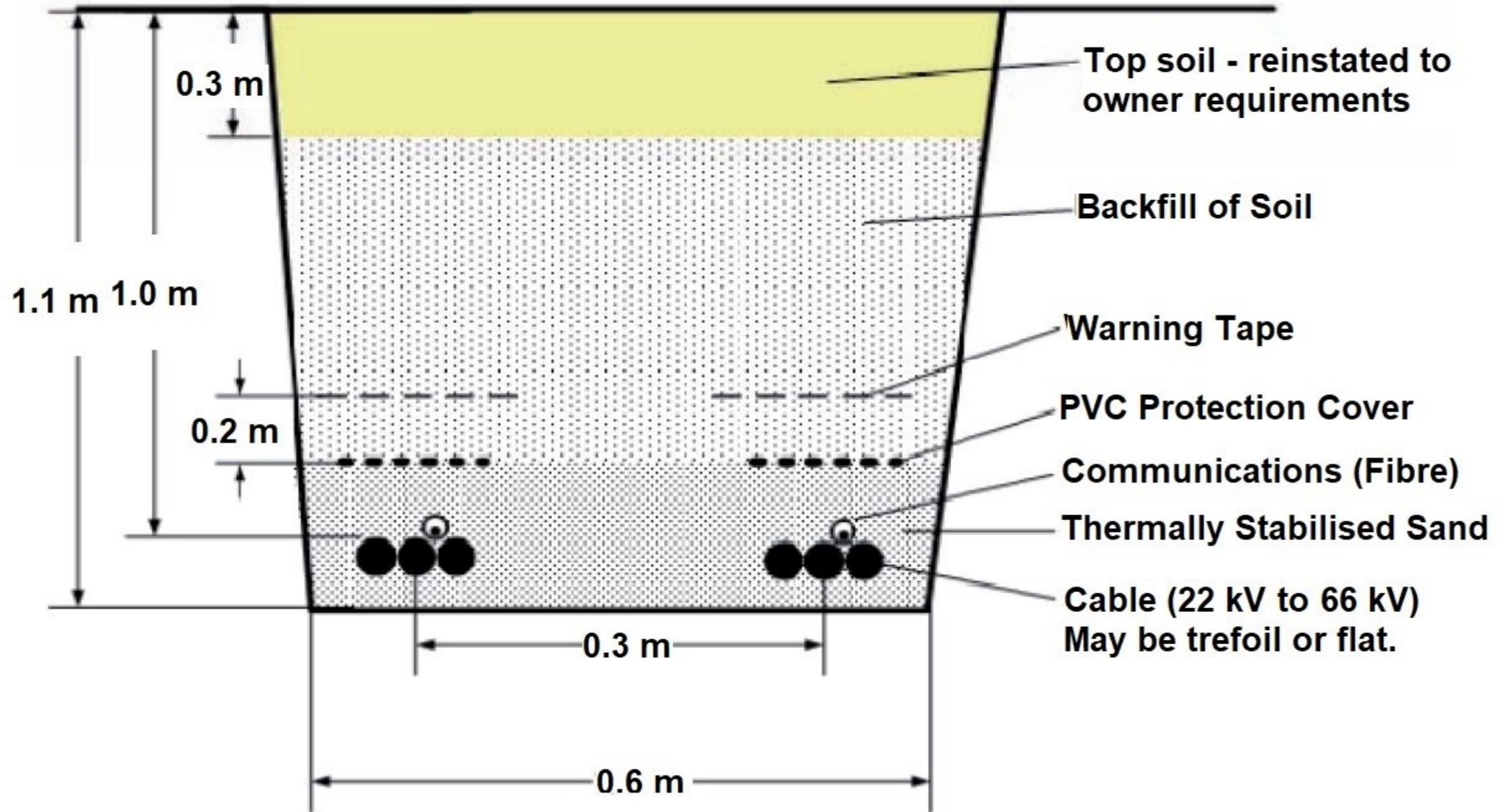
This copied document to be made available for the sole purpose of enabling its consideration and review as part of a planning process under the Planning and Environment Act 1987. The document must not be used for any purpose which may breach any copyright



Typological Section

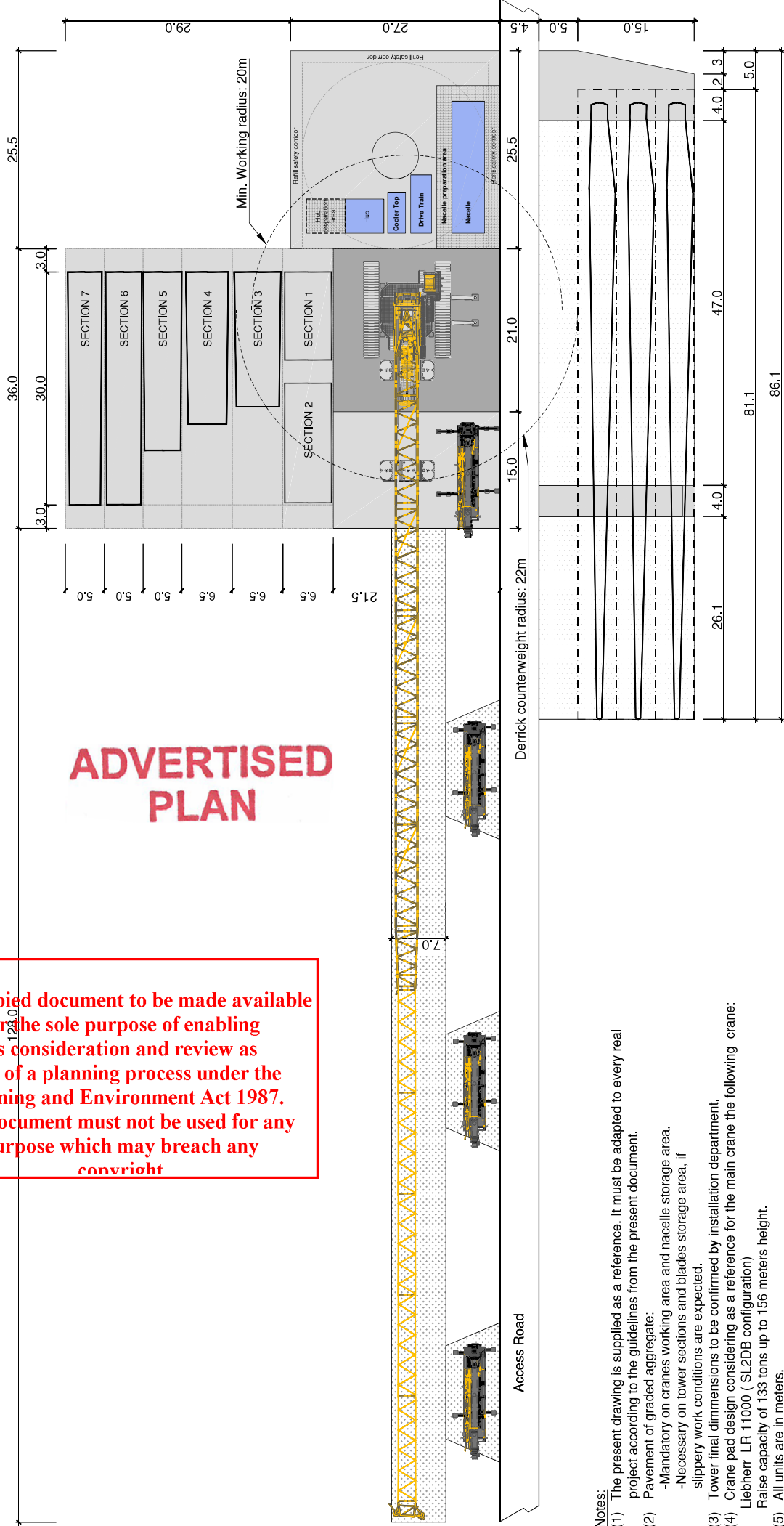
**ADVERTISED
PLAN**

Double Circuit Cable Trench



This copied document to be made available for the sole purpose of enabling its consideration and review as part of a planning process under the Planning and Environment Act 1987. The document must not be used for any purpose which may breach any copyright.

This copied document to be made available for the sole purpose of enabling its consideration and review as part of a planning process under the Planning and Environment Act 1987. The document must not be used for any purpose which may breach any convright



ADVERTISED PLAN

- Notes:**
- (1) The present drawing is supplied as a reference. It must be adapted to every real project according to the guidelines from the present document.
 - (2) Pavement of graded aggregate:
 - Mandatory on cranes working area and nacelle storage area.
 - Necessary on tower sections and blades storage area, if slippery work conditions are expected.
 - (3) Tower final dimensions to be confirmed by installation department.
 - (4) Crane pad design considering as a reference for the main crane the following crane: Liebherr LR 11000 (SLZDB configuration)
Raise capacity of 133 tons up to 156 meters height.
 - (5) All units are in meters.

Legend:

- Bearing capacity: Crane pressure + safety factor
- Bearing capacity: 2 Kg/cm²
- Area free of obstacles.

Auxiliary pad detail:
-Every 40m

ADVERTISED PLAN

This copied document to be made available for the sole purpose of enabling its consideration and review as part of a planning process under the Planning and Environment Act 1987. The document must not be used for any purpose which may breach any copyright

