

MID LEVEL WINDOW SCHEDULE	
A	56.4 T 53.8 S
B	53.5 T 50.8 S
C	50.5 T 47.9 S
D	47.6 T 45.0 S
E	44.7 T 43.0 S

This copied document to be made available for the sole purpose of enabling its consideration and review as part of a planning process under the Planning and Environment Act 1987. The document must not be used for any purpose which may breach any copyright

ADVERTISED PLAN

LAND SURVEYED:
 COUNTY OF BOURKE, PARISH OF MOORABBIN
 PART OF CROWN PORTION 39
 LOT 25 ON LP 10705, VOL. 5689 FOL. 686
 LOT 26 ON LP 10705, VOL. 7436 FOL. 036
 LOT 27 ON LP 10705, VOL. 5070 FOL. 848
 LOT 28 ON LP 10705, VOL. 6305 FOL. 805
 LOTS 29 & 30 ON LP 10705, VOL. 6663 FOL. 550
 LOT 31 ON LP 10705, VOL. 5070 FOL. 849

IMPORTANT NOTE:
 - SEE JCA LAND CONSULTANTS 'RECORD OF HAVING A RE-ESTABLISHMENT TITLE BOUNDARIES' (DWG No. 3084411G1D.dwg) FOR TITLE DETAILS AND RELATIONSHIP TO FENCING.

SYMBOL	DESCRIPTION	SYMBOL	DESCRIPTION	SYMBOL	DESCRIPTION
(T.B.M. symbol)	T.B.M.	(51.4 symbol)	HEAD HEIGHT (GROUND FLOOR)	(Orange dashed line)	PROPERTY OUTLET
(Tree symbol)	TREE (TRUNK & SPREAD) DENOTES TREE APPROXIMATELY 5 METRES HIGH	(54.1 symbol)	HEAD HEIGHT (TOP FLOOR)	(Blue dashed line)	APPROXIMATE LOCATION OF RIDGELINES/GUTTERS (LIP) (HEIGHT SHOWN THIS % ARE TO LIP)
(Sign symbol)	SIGN	(53.1 symbol)	HEAD HEIGHT (MID FLOOR)	(Black dashed line)	APPROXIMATE LOCATION OF OVERHEAD SERVICE WIRES
(Traffic light symbol)	TRAFFIC LIGHT	(51.2 symbol)	ADJOINING PROPERTY LEVEL	(Blue dashed line)	CHANGE OF GRADE
(Telstra pit symbol)	TELSTRA PIT	(51.2 symbol)	FLOOR LEVEL (X REPRESENTS THE LOCATION FOR THE LEVEL SHOWN)	(Blue dashed line)	INVERT OF CONCRETE KERB
(Gas valve symbol)	GAS VALVE	(51.2 symbol)	DECK LEVEL (X REPRESENTS THE LOCATION FOR THE LEVEL SHOWN)	(Blue dashed line)	
(Round bin symbol)	ROUND BIN	(51.2 symbol)	PARAPETS		
(Bin symbol)	HABITABLE WINDOW	(51.2 symbol)	RIDGELINES		
(Ground level symbol)	WINDOW (NON-HABITABLE)	(51.2 symbol)	GUTTERING (LIP)		
(Door symbol)	DOOR	(51.2 symbol)	TOP OF BALUSTRADE		
(Denotes direction symbol)	DENOTES DIRECTION AND POSITION OF PHOTO FOUR				

DATUM NOTES:

- LEVELS SHOWN THIS ± 0.00 ARE BASED ON AUSTRALIAN HEIGHT DATUM
- LEVEL DATUM BASED ON GPSNET CORRECTED RTK GNSS OBSERVATIONS
- CONTOUR INTERVAL AT 0.2m

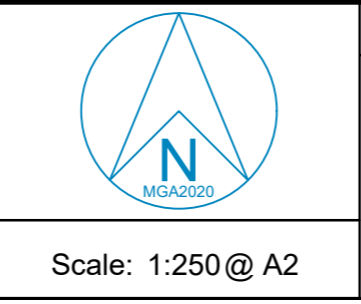
REV.	REVISION	DATE	APP'D	CHECKED
02	No.368 SOUTH ROAD LOT AREA AMENDED	03/05/23	C.M.	

JCA Land Consultants certify that this plan is in all respects accurate and correctly represents the existing conditions on the 04/04/23

Surveys	C. RANKIN	L.H.
Drawn	R. ROMAN	28/04/23
Checked	M. SCOTT	28/04/23

EXPLANATORY NOTES:

- DATA ON THIS PLAN MAY ONLY BE MANIPULATED WITH THE PERMISSION OF JCA LAND CONSULTANTS.
- ACCURACY OF DETAIL LOCATION ± 0.05
- ACCURACY OF REDUCED LEVELS ± 0.02
- THIS HARD COPY PLAN IS A VERIFICATION PLOT OF COMPUTER FILE: DWG: 3084412F1D.dwg DATE: 03/05/23
- LOCATION OF ABUTTING BUILDINGS AND ENVIRONS IS INDICATIVE ONLY UNLESS OTHERWISE SHOWN.
- TREE SPREAD SHOWN ON THIS PLAN IS INDICATIVE ONLY.
- ONLY SIGNIFICANT TREES HAVE BEEN LOCATED AND SHOWN ON THIS PLAN.
- ALL VEGETATION SHOWN ON THIS PLAN IS TO BE VERIFIED BY AN ARBORIST.
- WINDOW DESCRIPTIONS ANNOTATED ON THIS PLAN ARE INDICATIVE ONLY AND SHOULD BE VERIFIED BY THE ARCHITECT, OWNER OR BUILDER PRIOR TO ANY DESIGN.
- ONLY VISIBLE SERVICES ARE SHOWN ON THIS PLAN.
- IT IS STRONGLY RECOMMENDED THAT A MELBOURNE ONE CALL SERVICE (DIAL BEFORE YOU DIG, FAX 1300 652 077) ENQUIRY BE MADE TO DETERMINE THE LOCATION OF ANY UNDERGROUND SERVICES WITHIN THE SITE.



Client : KUD Municipality : KINGSTON
 PLAN OF FEATURE SURVEY
 360-372 SOUTH ROAD
 MOORABBIN

DWG: 3084412F1D
 Job No: 30844
 Sheet: 1 OF 1

JCA LAND CONSULTANTS
 The Subdivision Specialists
 Suite 9, 303 Maroondah Highway, Ringwood VIC 3134
 T: 03 9735 4888 E: jca@jcalc.com.au www.jcalc.com.au



PHOTO No.1

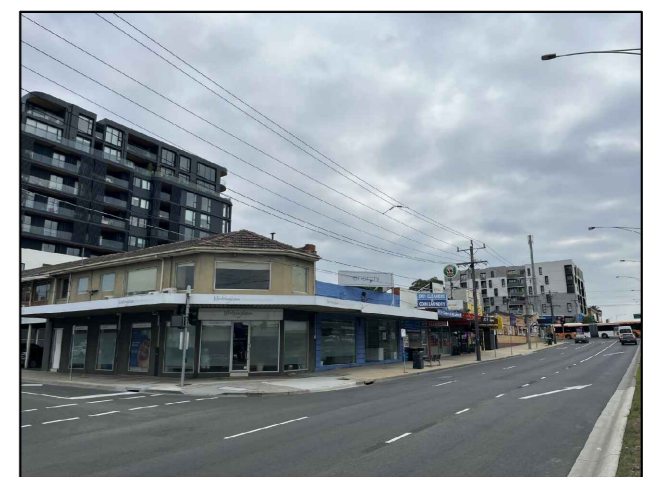


PHOTO No.2

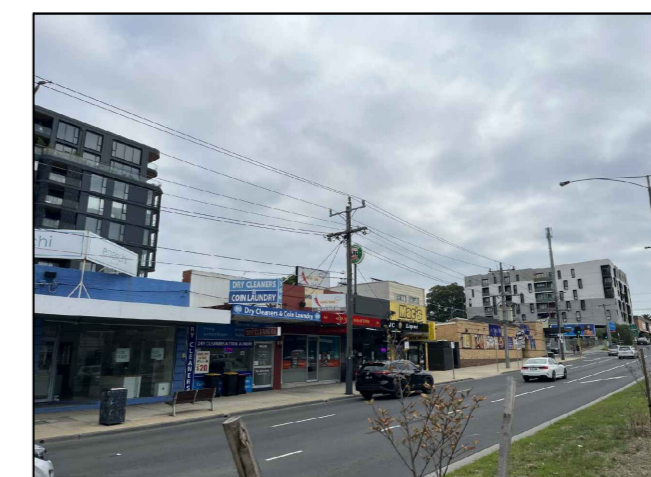


PHOTO No.3

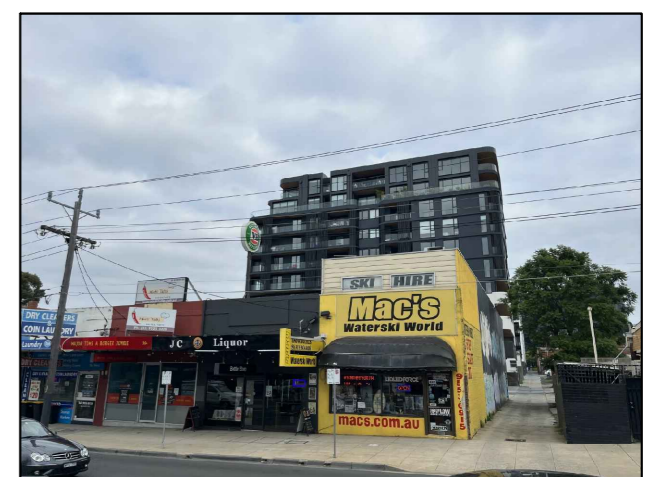


PHOTO No.4

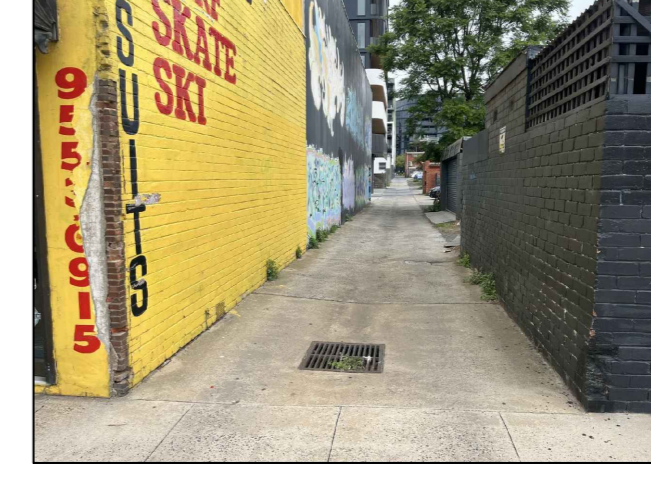


PHOTO No.5



PHOTO No.6



PHOTO No.7

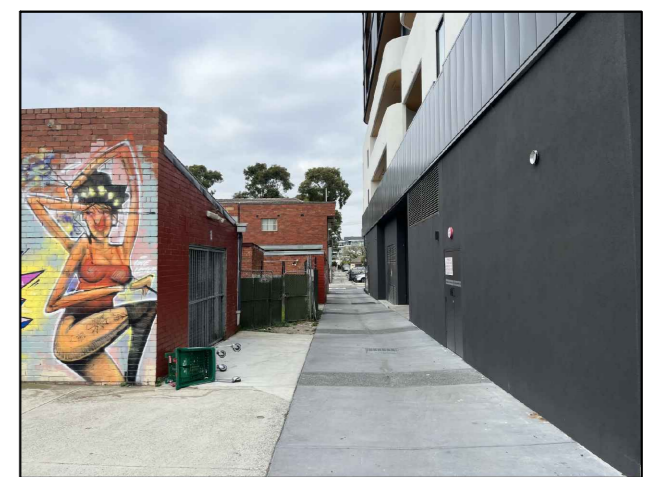


PHOTO No.8

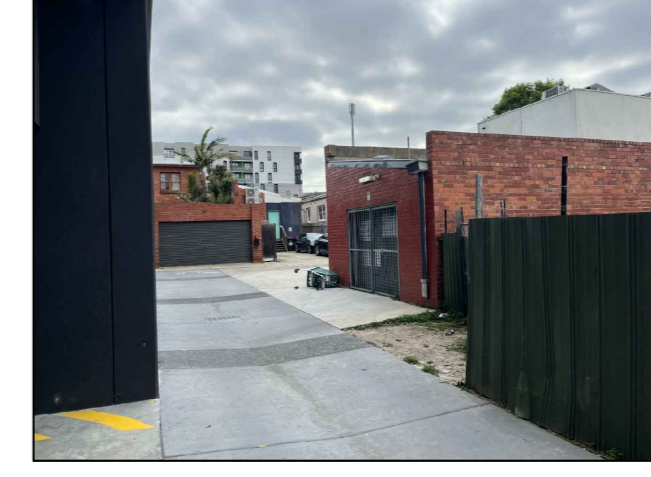


PHOTO No.9

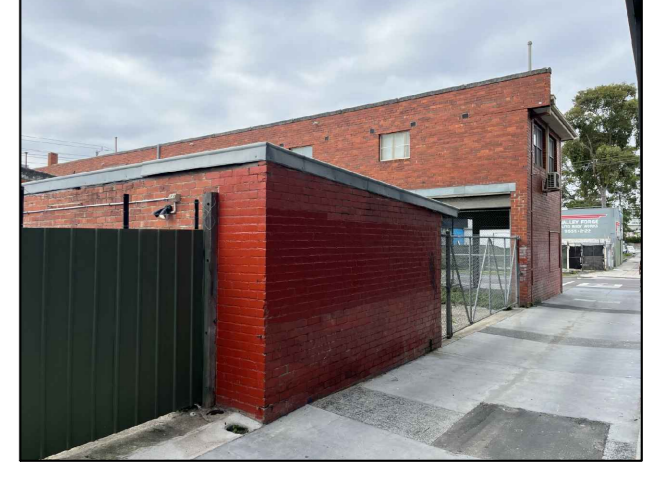


PHOTO No.10