



# Imaged Document Cover Sheet

The document following this cover sheet is an imaged document supplied by LANDATA®, Secure Electronic Registries Victoria.

Document Type	<b>Plan</b>
Document Identification	<b>LP141403</b>
Number of Pages (excluding this cover sheet)	<b>1</b>
Document Assembled	<b>14/06/2024 11:19</b>

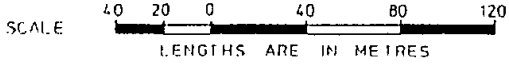
**Copyright and disclaimer notice:**

© State of Victoria. This publication is copyright. No part may be reproduced by any process except in accordance with the provisions of the Copyright Act 1968 (Cth) and for the purposes of Section 32 of the Sale of Land Act 1962 or pursuant to a written agreement. The information is only valid at the time and in the form obtained from the LANDATA® System. None of the State of Victoria, LANDATA®, Secure Electronic Registries Victoria Pty Ltd (ABN 86 627 986 396) as trustee for the Secure Electronic Registries Victoria Trust (ABN 83 206 746 897) accept responsibility for any subsequent release, publication or reproduction of the information.

The document is invalid if this cover sheet is removed or altered.

**LP141403**  
**EDITION 2**  
 APPROVED 8/12/82

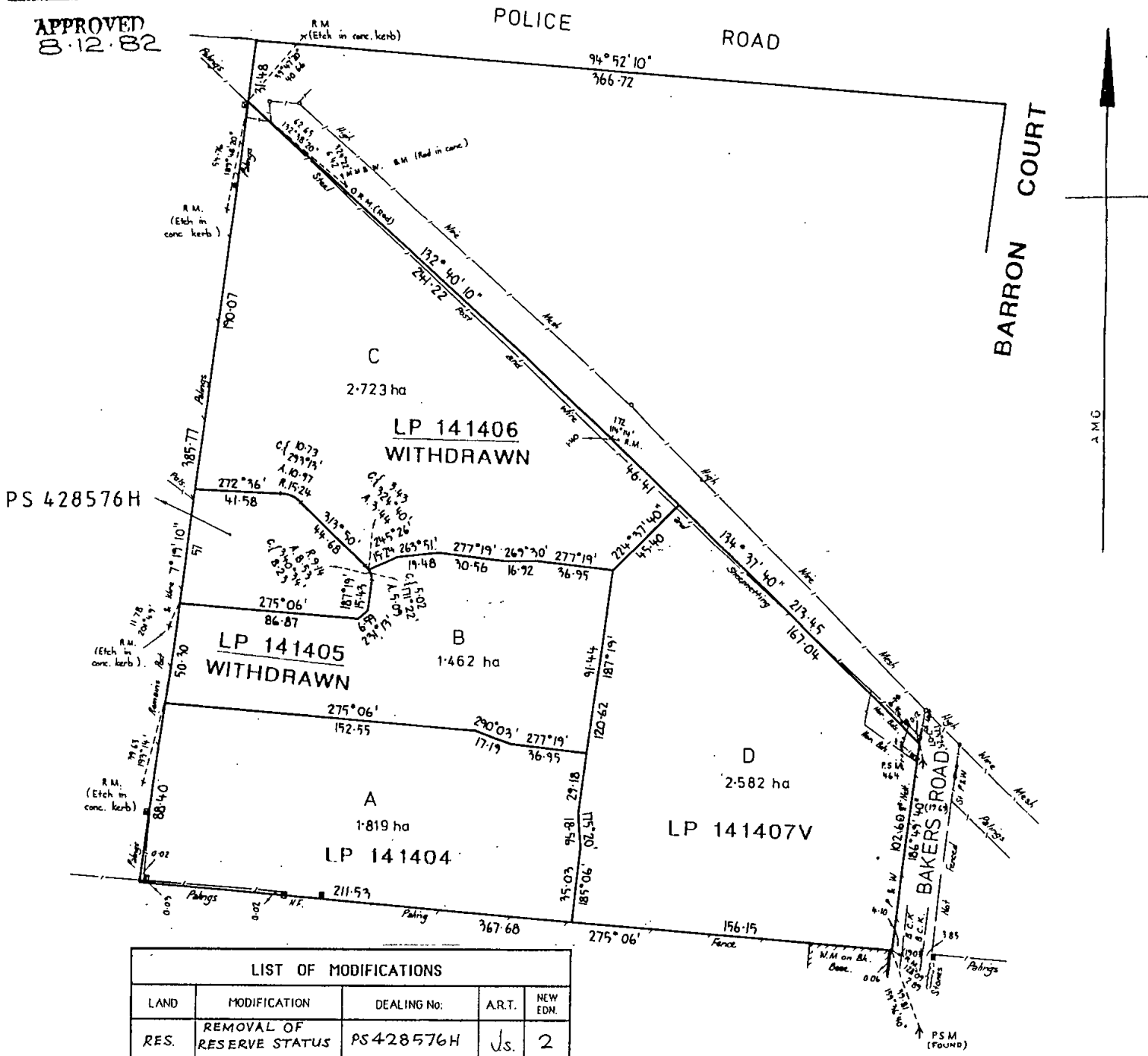
PLAN OF SUBDIVISION OF PART OF CROWN PORTION 5 PARISH OF DANDENONG COUNTY OF BOURKE	APPROPRIATIONS	ENCUMBRANCES & OTHER NOTATIONS
		BEARING DATUM, AMG ZONE 55 A.M.G. REFERENCE 7922/55/361400/5799000 REFERENCE MARKS (R.M.) ARE 002 DIAMETER IRON RODS UNLESS SHOWN OTHERWISE



VOL. 8892 Fol. 228

**CHART No. 328**

**APPROVED**  
 8.12.82



LIST OF MODIFICATIONS				
LAND	MODIFICATION	DEALING No.	A.R.T.	NEW EDN.
RES.	REMOVAL OF RESERVE STATUS	PS 428576H	Js.	2