



## ADVERTISED PLAN

This copied document to be made available for the sole purpose of enabling its consideration and review as part of a planning process under the Planning and Environment Act 1987. The document must not be used for any purpose which may breach any copyright

WILLATOOK WIND FARM

# Planning Application Report

## Appendix A Map Book



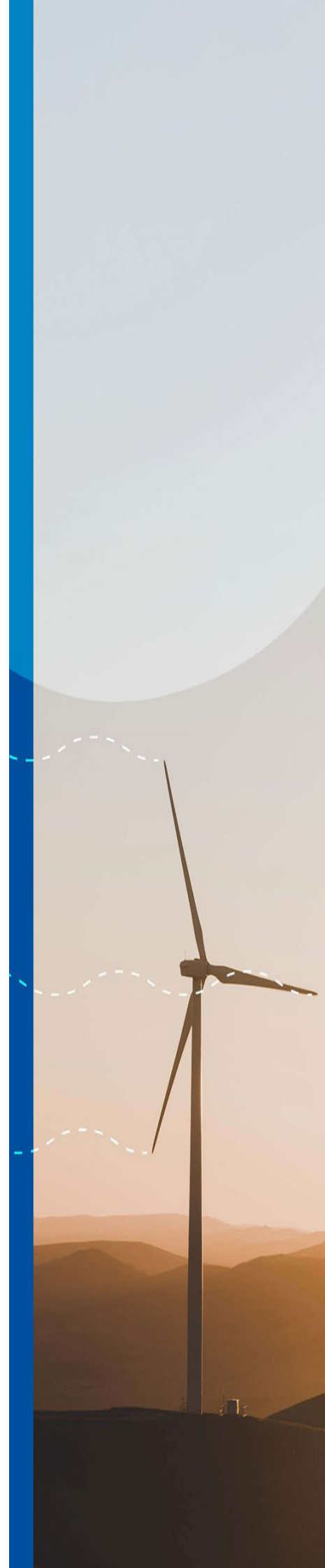
# Appendix A

## Map book

This copied document to be made available  
for the sole purpose of enabling  
its consideration and review as  
part of a planning process under the  
Planning and Environment Act 1987.  
The document must not be used for any  
purpose which may breach any  
copyright

Project context	1
Site overview	2
Local road network	3
Mapped native vegetation within the project site	4
Registered Aboriginal Places and areas of defined Aboriginal cultural heritage sensitivity	5
Location of identified historical heritage places	6
Planning zones and overlays	7
Project overview	8
Project overview western sector	9
Project overview northern sector	10
Project overview southern sector	11
Project overview eastern sector	12
Proposed wind turbine dimensions	13
Indicative wind turbine construction layout	14
Proposed road mitigation works	15
Conceptual access design	16
Concept bridge waterway crossings – location plan	17
Shaw River crossing layout plan	18
Back Creek crossing layout plan	19
Shaw River crossing long section	20
Back Creek crossing long section	21
Battery energy storage system concept plan	22
On-site substation concept plan	23
Section view of on-site substation	24
Operations and maintenance facility site plan	25
General arrangement of 150m guyed lattice mast	26
Indicative business sign concept	27
Location of publicly accessible viewpoints within the investigation area	28
Final turbine free buffer around Cockatoo Swamp complex	30

**ADVERTISED  
PLAN**



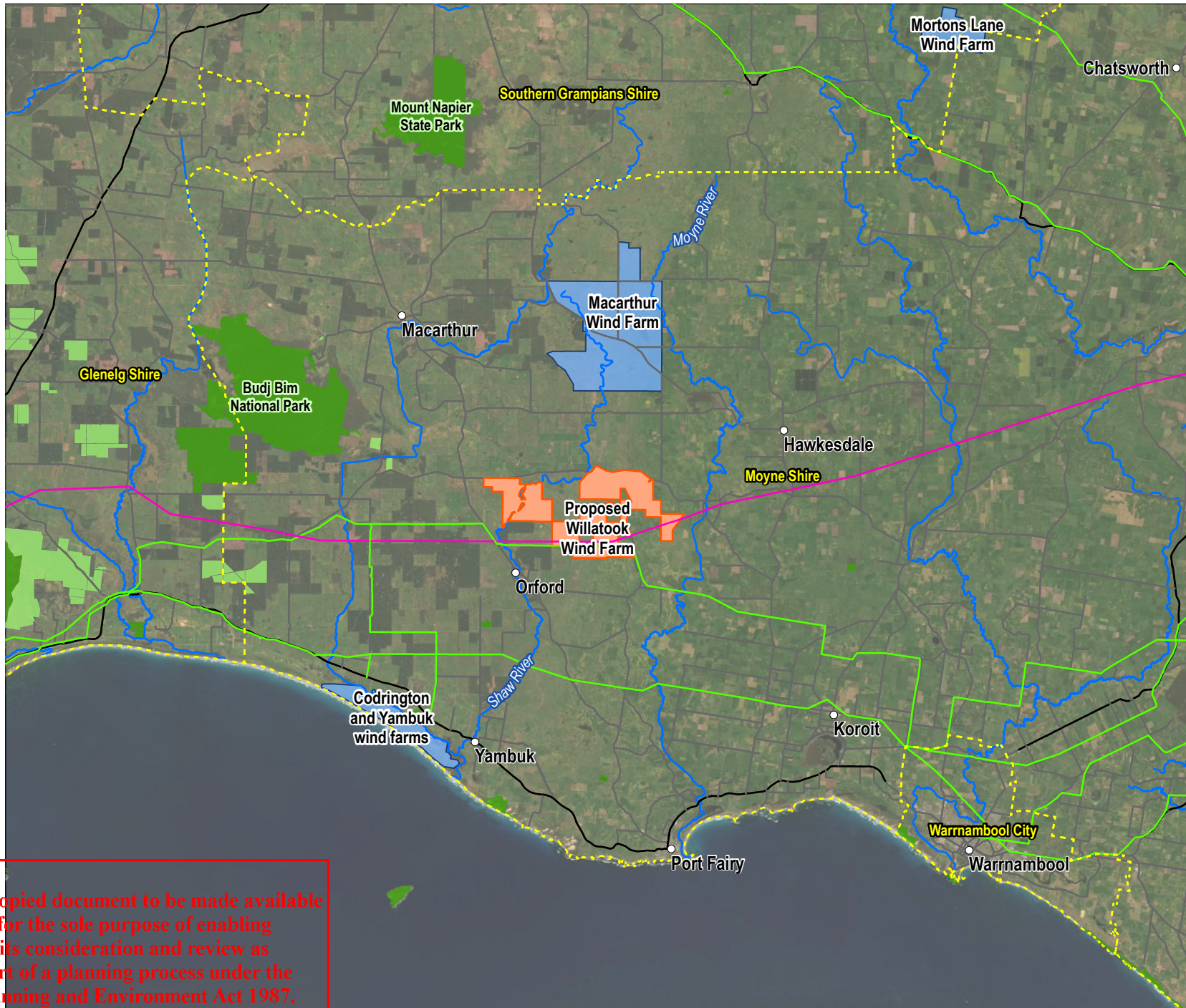


## ADVERTISED PLAN

This copied document to be made available  
for the sole purpose of enabling  
its consideration and review as  
part of a planning process under the  
Planning and Environment Act 1987.  
The document must not be used for any  
purpose which may breach any  
copyright



\\E:\287657\_02\_F006\_GIS DOG\REFERENCE\287657\_02\_F006\_A4PRX\_V02  
PROJECT: 287657  
DATE: 28/07/2015



**LEGEND**

- Locality
- 500KV transmission line
- 66KV transmission line
- Highway
- Major road
- Major watercourse
- Local government area
- Operating wind farm
- National parks and nature conservation reserves
- State forest
- Willatook Wind Farm boundary

# ADVERTISED PLAN

SOURCE:  
Willatook Wind Farm boundary and operating wind farms from Wind Prospect.  
Roads, watercourses, transmission lines and national parks from Vicmap.  
Imagery from ArcGIS Online (various capture dates).

0 5 10 km

SCALE 1:400,000  
PAGE SIZE: A4  
PROJECTION: GDA 1994 MGA Zone 54

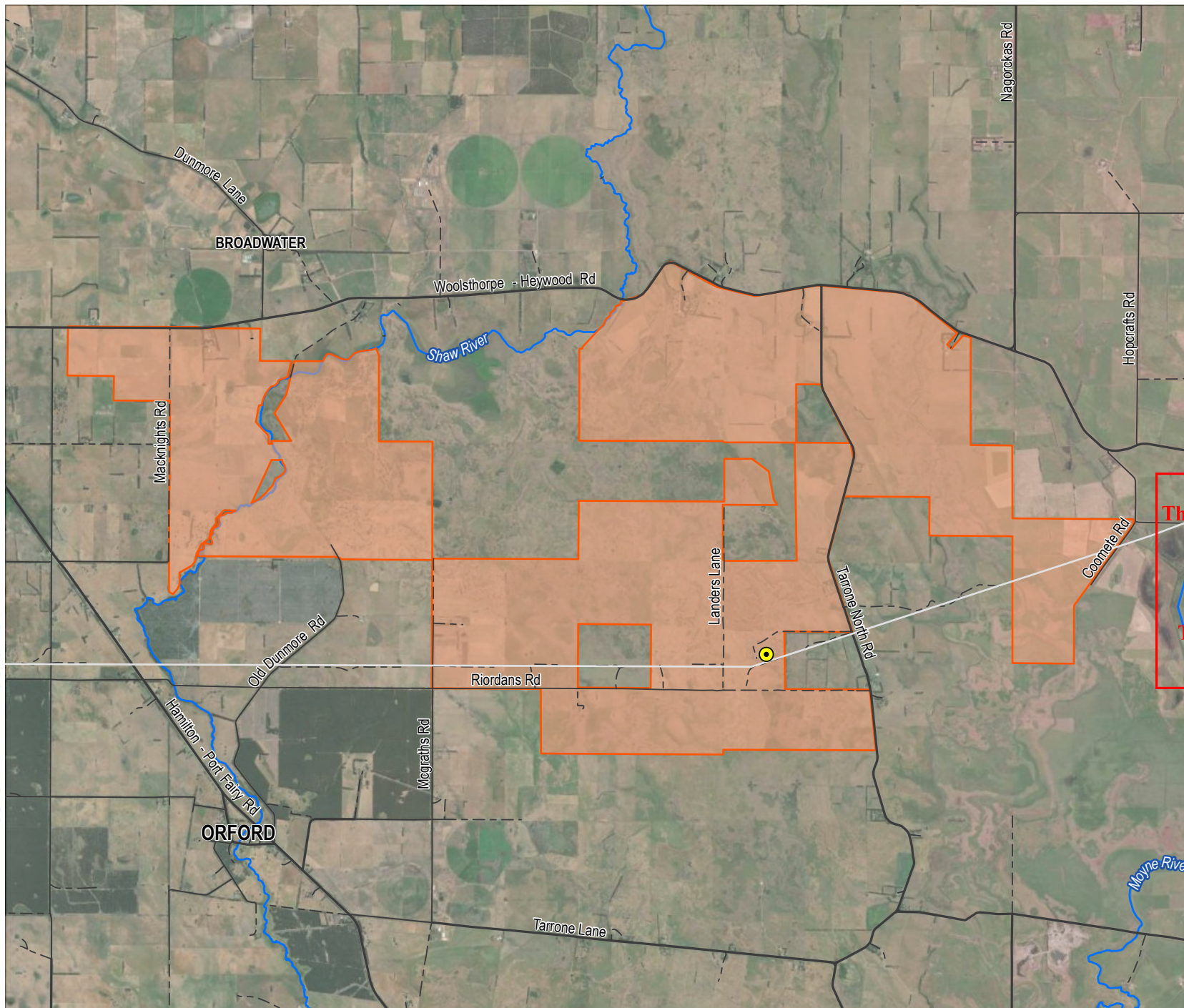
WIND PROSPECT  
WILLATOOK WIND FARM

**FIGURE MB1**  
Context plan








This copied document to be made available for the sole purpose of enabling its consideration and review as part of a planning process under the Planning and Environment Act 1987. The document must not be used for any purpose which may breach any copyright

DISCLAIMER: THIS FIGURE HAS BEEN PRODUCED FOR INTERNAL REVIEW ONLY AND MAY CONTAIN INCONSISTENCIES OR OMISSIONS. IT IS NOT INTENDED FOR PUBLICATION.





## LEGEND

-  Tarrone Terminal Station
-  Major road
-  Local road
-  Track
-  Watercourse
-  500kV Moorabool-Heywood transmission line
-  Willatook Wind Farm boundary

# ADVERTISED PLAN

This copied document to be made available for the sole purpose of enabling its consideration and review as part of a planning process under the Planning and Environment Act 1987. The document must not be used for any purpose which may breach any copyright.

SOURCE:  
Willatook Wind Farm boundary from Wind Prospect.  
Terminal station from Tetra Tech Coffey.  
Roads, transmission line and watercourses from Vicmap.  
Imagery from ArcGIS Online (various capture dates).



0 2 km  
SCALE 1:75,000  
PAGE SIZE: A4  
PROJECTION: GDA 1994 MGA Zone 54

WIND PROSPECT

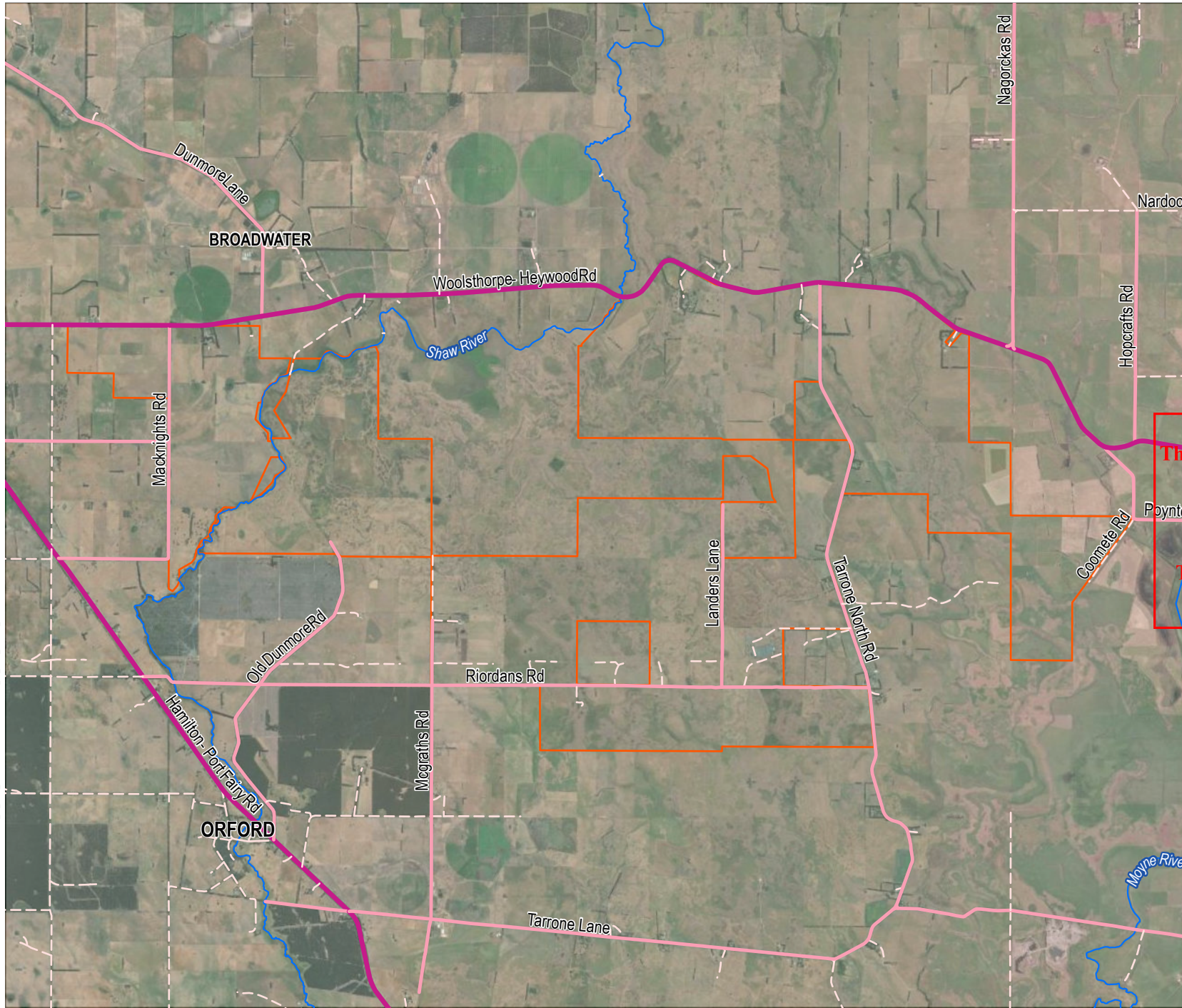
WILLATOOK WIND FARM

FIGURE MB2

Site overview







## LEGEND

- Arterial Road
- Local road
- Track
- ~ Watercourse
- Willatook Wind Farm boundary

# ADVERTISED PLAN

This copied document to be made available for the sole purpose of enabling its consideration and review as part of a planning process under the Planning and Environment Act 1987. The document must not be used for any purpose which may breach any copyright.

SOURCE:  
Willatook Wind Farm boundary from Wind Prospect.  
Roads and watercourses from Vicmap.  
Imagery from ArcGIS Online (various capture dates).



0 2 km  
SCALE 1:75,000  
PAGE SIZE: A4  
PROJECTION: GDA 1994 MGA Zone 54

WIND PROSPECT

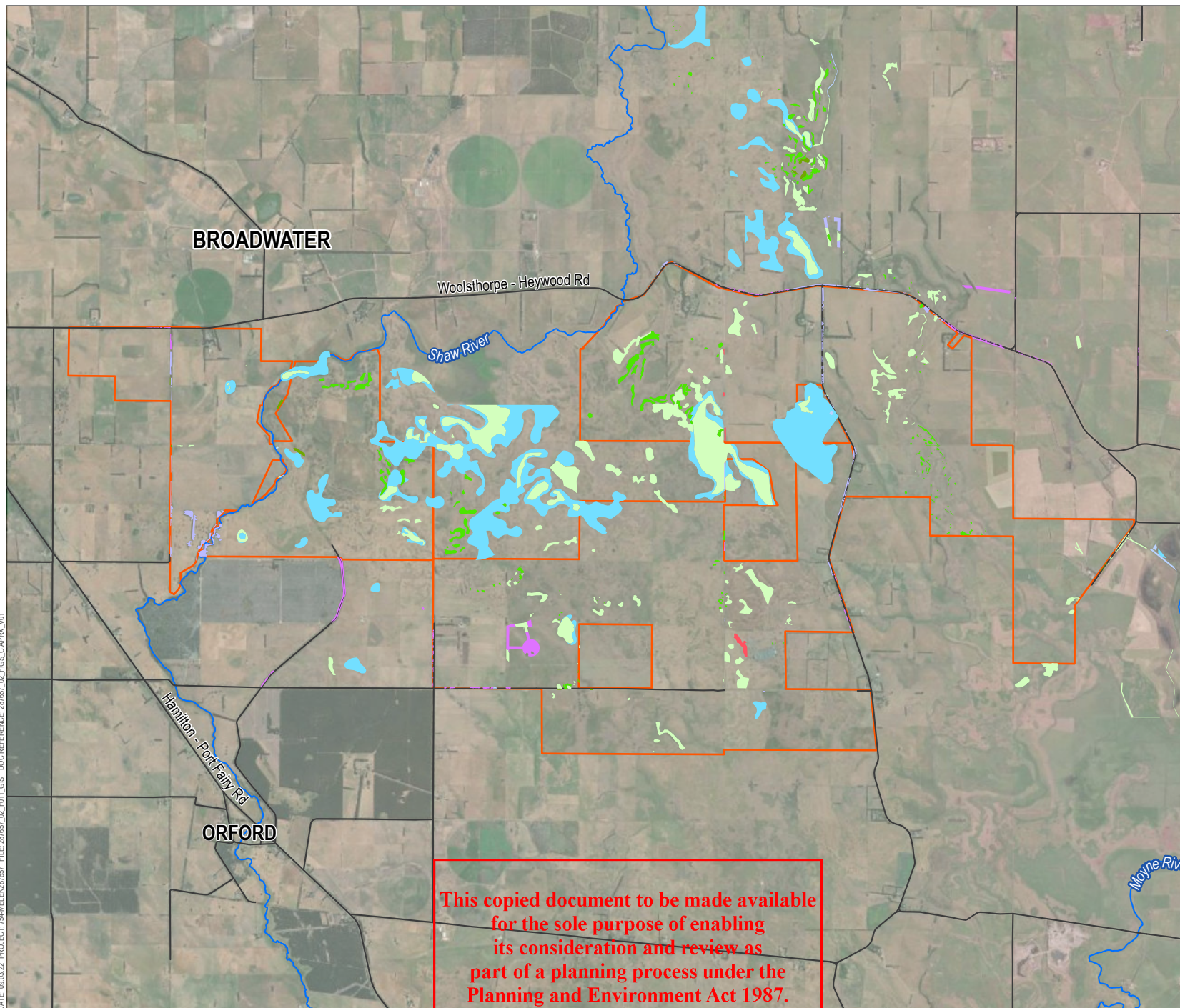
WILLATOOK WIND FARM

FIGURE MB3

Local road network







## LEGEND

- Road
- ~ Watercourse
- Willatook Wind Farm boundary
- Ecological vegetation class (EVC)
  - Aquatic Herbland
  - Plains Grassland
  - Swamp Scrub
  - Tall Marsh
  - Unassessed
  - Basalt Shrubby Woodland
  - Higher Rainfall Plains Grassy Woodland
  - Plains Grassy Wetland
  - Stony Knoll Shrubland
  - Swampy Riparian Woodland
  - Current Wetlands

# ADVERTISED PLAN

SOURCE:  
Willatook Wind Farm boundary and EVCs from Wind Prospect.  
Road and watercourses from Vicmap.  
Imagery from ArcGIS Online (various capture dates).



0 1 2  
km  
SCALE 1:75,000  
PAGE SIZE: A4  
PROJECTION: GDA 1994 MGA Zone 54

WIND PROSPECT

WILLATOOK WIND FARM

FIGURE MB4

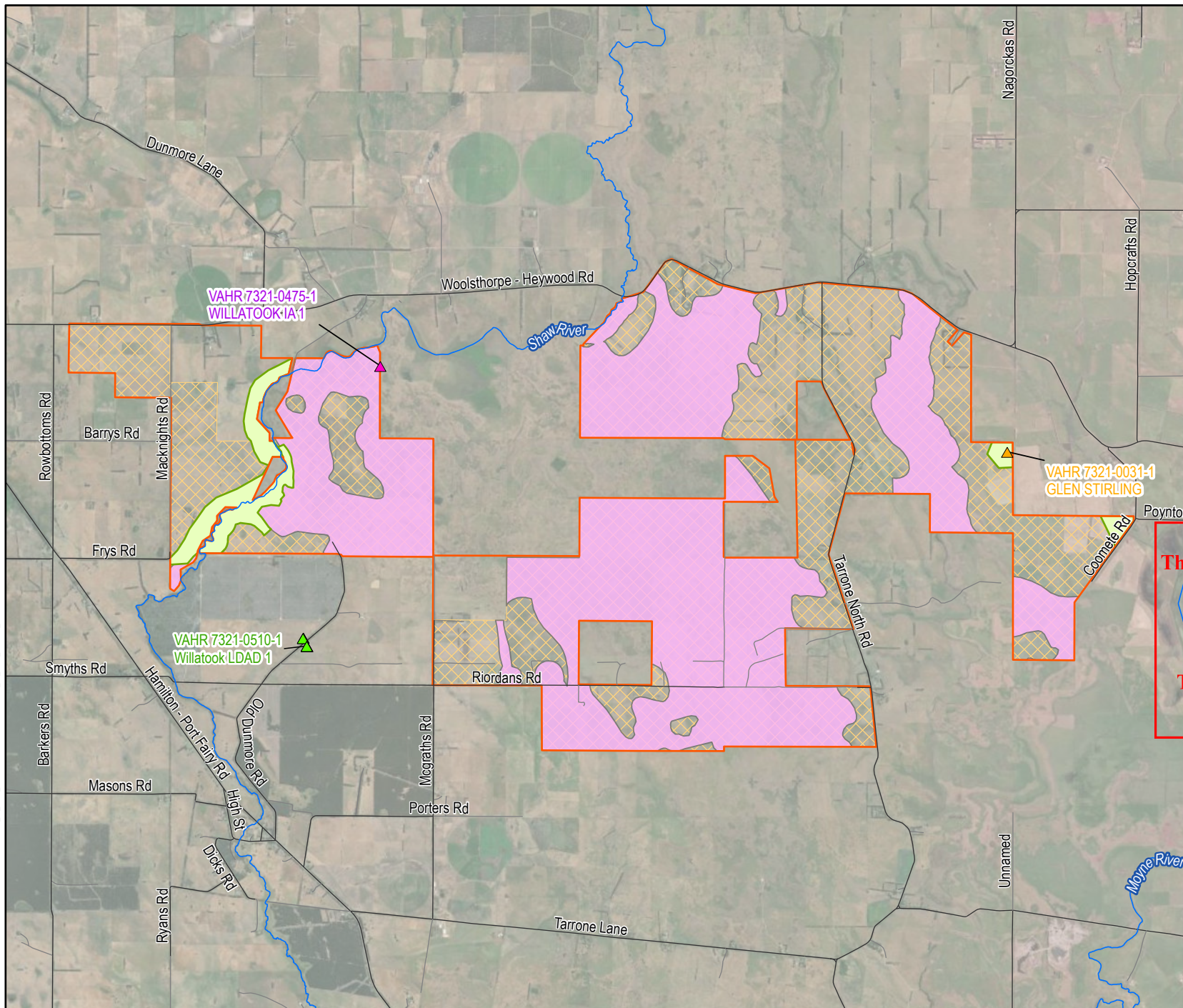
Mapped native vegetation within  
the project site



This copied document to be made available  
for the sole purpose of enabling  
its consideration and review as  
part of a planning process under the  
Planning and Environment Act 1987.

The document must not be used for any  
purpose which may breach any  
copyright





## LEGEND

### Aboriginal places

- Artefact scatter
- Earth feature
- Low density artefact distribution
- Watercourse
- Road
- Track
- Areas of aboriginal cultural heritage sensitivity
- Areas of Aboriginal Cultural Heritage potential
- Surveyed area
- Willatook Wind Farm boundary

## ADVERTISED PLAN

This copied document to be made available for the sole purpose of enabling its consideration and review as part of a planning process under the Planning and Environment Act 1987. The document must not be used for any purpose which may breach any copyright.

### SOURCE:

Willatook Wind Farm boundary from Wind Prospect.  
Watercourses from Vicmap.  
Aboriginal heritage sites from Ecology and Heritage.  
Imagery from ArcGIS Online (various capture dates).



0 2 km  
SCALE 1:75,000  
PAGE SIZE: A4  
PROJECTION: GDA 1994 MGA Zone 54

WIND PROSPECT

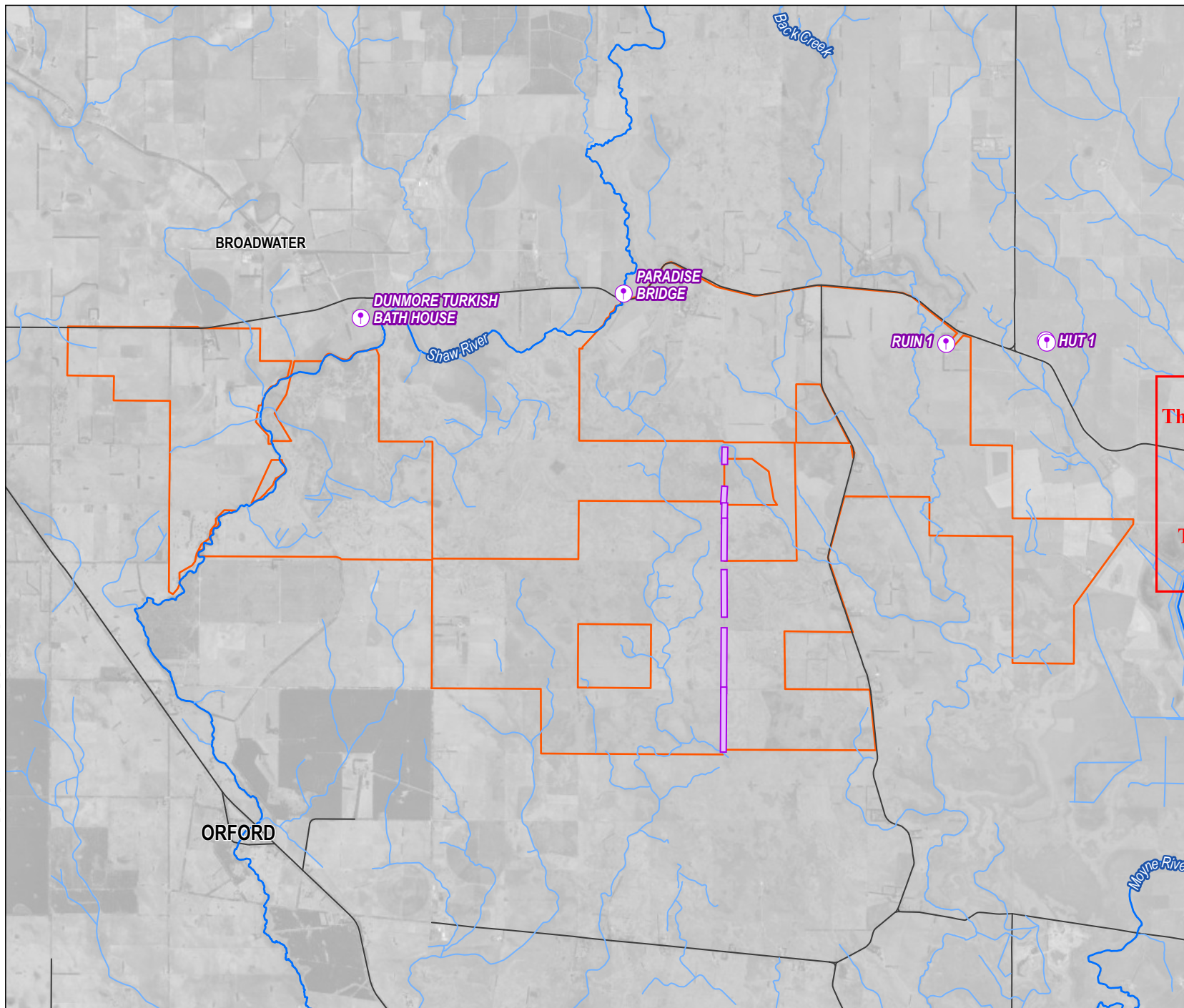
WILLATOOK WIND FARM

FIGURE MB5







Registered Aboriginal Places  
and areas of defined Aboriginal  
cultural heritage sensitivity







## LEGEND

-  Historical site
-  Dry stone wall
-  Major road
-  Major watercourse
-  Minor watercourse
-  Willatook Wind Farm boundary

# ADVERTISED PLAN

This copied document to be made available for the sole purpose of enabling its consideration and review as part of a planning process under the Planning and Environment Act 1987. The document must not be used for any purpose which may breach any copyright.

SOURCE:  
Willatook Wind Farm boundary and historical sites from Wind Prospect.  
Roads and watercourses from Vicmap.  
Imagery from ArcGIS Online (various capture dates).



0 1 2 km  
SCALE 1:75,000  
PAGE SIZE: A4  
PROJECTION: GDA 1994 MGA Zone 54

WIND PROSPECT

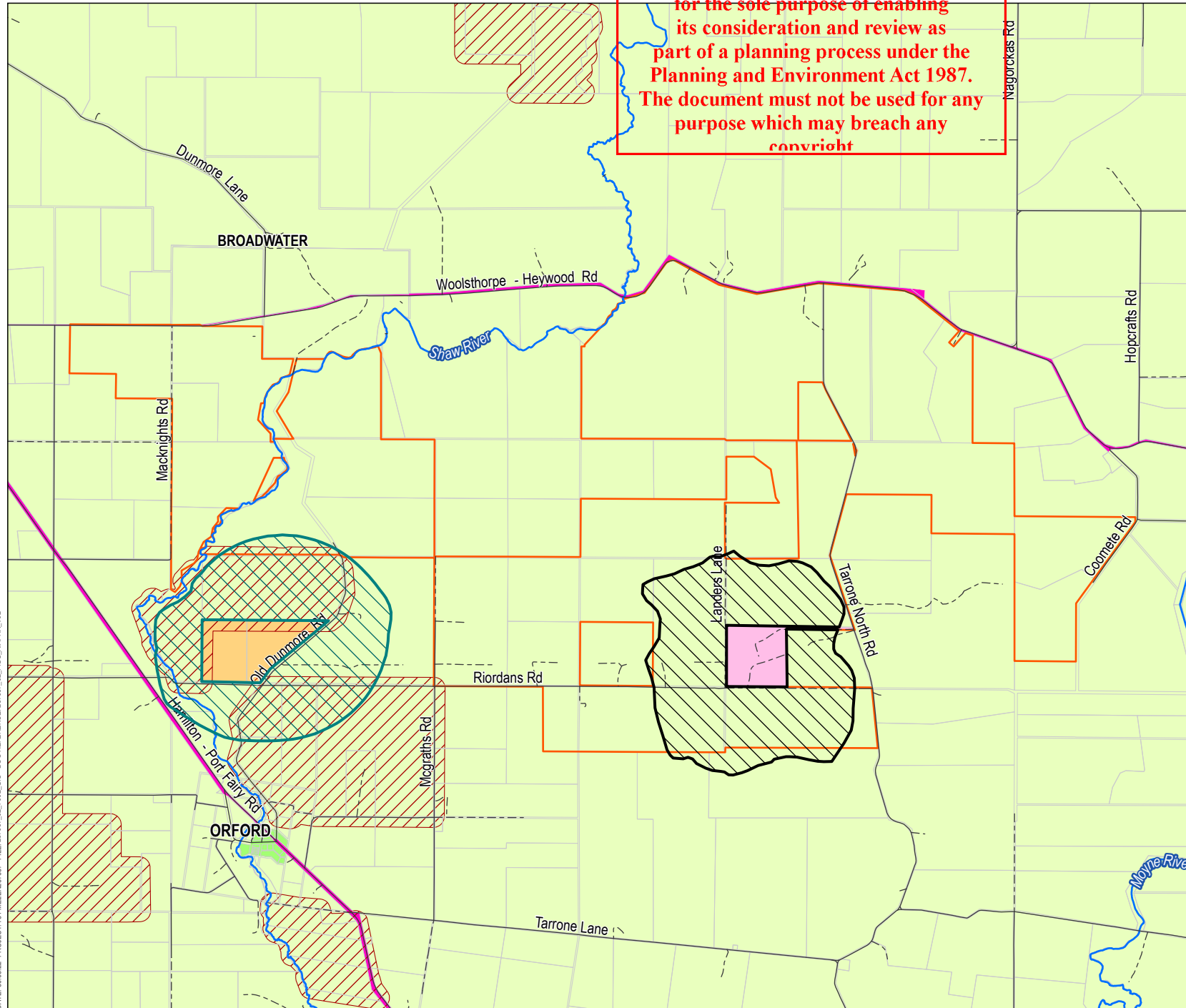
WILLATOOK WIND FARM

FIGURE MB6

Location of identified heritage places



This copied document to be made available  
for the sole purpose of enabling  
its consideration and review as  
part of a planning process under the  
Planning and Environment Act 1987.  
The document must not be used for any  
purpose which may breach any  
copyright



## LEGEND

- Road
- - - Track
- Watercourse
- Willatook Wind Farm boundary
- Property
- Planning Overlay**
  - Bushfire management overlay
  - Environmental significance overlay - Schedule 4
  - Environmental significance overlay - Schedule 5
- Planning Zone**
  - Farming zone
  - Transport zone 2
  - Special use zone - schedule 5
  - Special use zone - schedule 6
  - Township zone

# ADVERTISED PLAN

SOURCE:  
Willatook Wind Farm boundary from Wind Prospect.  
Terminal station from Tetra Tech Coffey.  
Roads, transmission line, watercourses, property and planning  
overlay from Vicmap.  
Imagery from ArcGIS Online (various capture dates).



0 2 km  
SCALE 1:75,000  
PAGE SIZE: A4  
PROJECTION: GDA 1994 MGA Zone 54

WIND PROSPECT

WILLATOOK WIND FARM

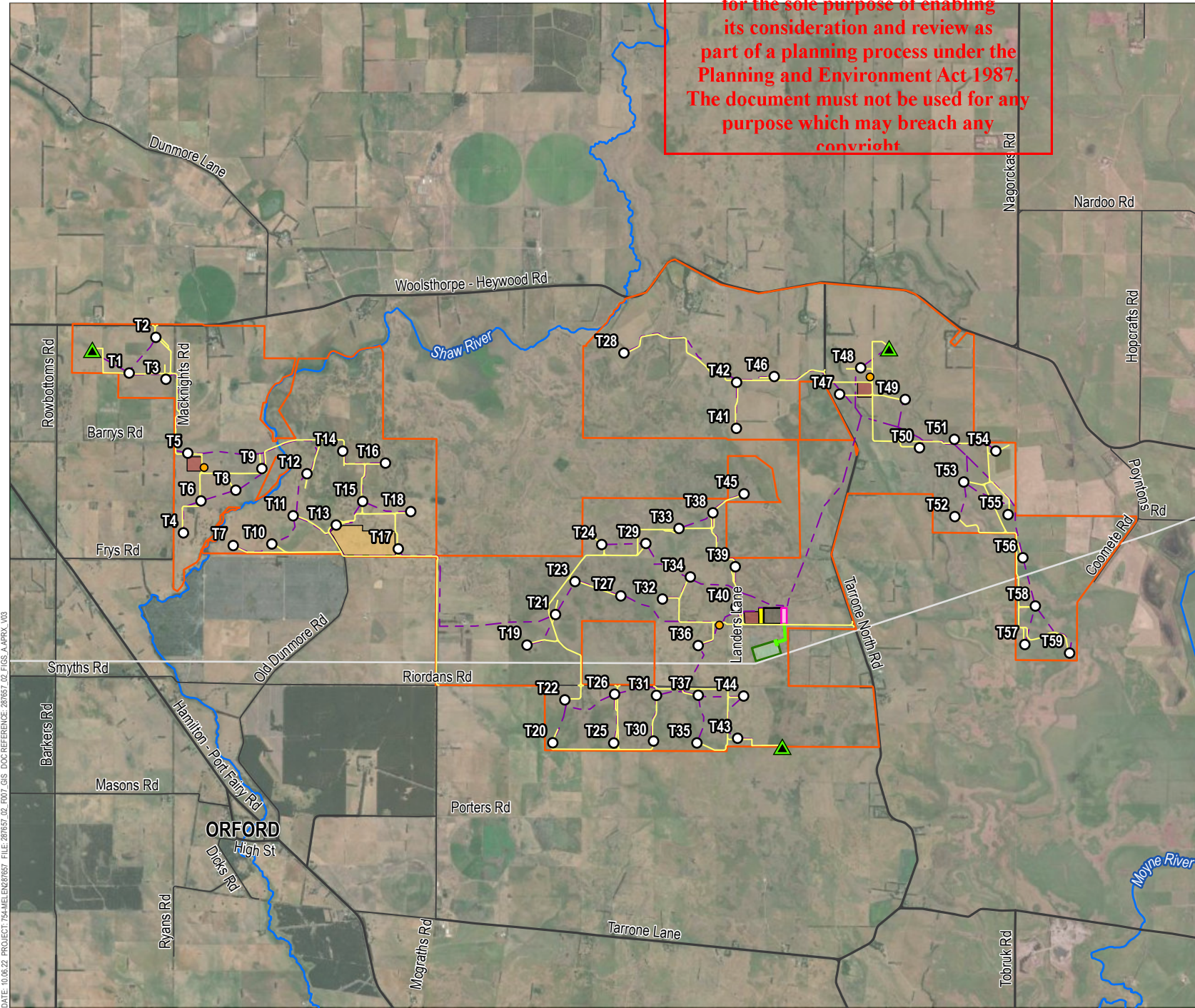
FIGURE MB7

Planning zones and overlays





This copied document to be made available for the sole purpose of enabling its consideration and review as part of a planning process under the Planning and Environment Act 1987. The document must not be used for any purpose which may breach any copyright



# LEGEND

- Turbine location
- ▲ Permanent met mast
- Concrete batch plant
- - - Underground cable
- Access track
- Substation
- Battery energy storage system
- Construction compound
- Quarry area
- Operations and maintenance facility
- Transmission line and grid connection infrastructure
- Tarrone Terminal Station
- Willatook Wind Farm boundary
- 500kV Moorabool-Heywood transmission line
- Major road
- Local road
- Watercourse

## ADVERTISED PLAN

SOURCE:  
Willatook Wind Farm boundary, turbine locations and site infrastructure from Wind Prospect.  
Roads and watercourses from Vicmap.  
Imagery from ArcGIS Online (various capture dates).



0 2 km  
SCALE 1:75,000  
PAGE SIZE: A4  
PROJECTION: GDA 1994 MGA Zone 54

WIND PROSPECT

WILLATOOK WIND FARM

FIGURE MB8

Project overview

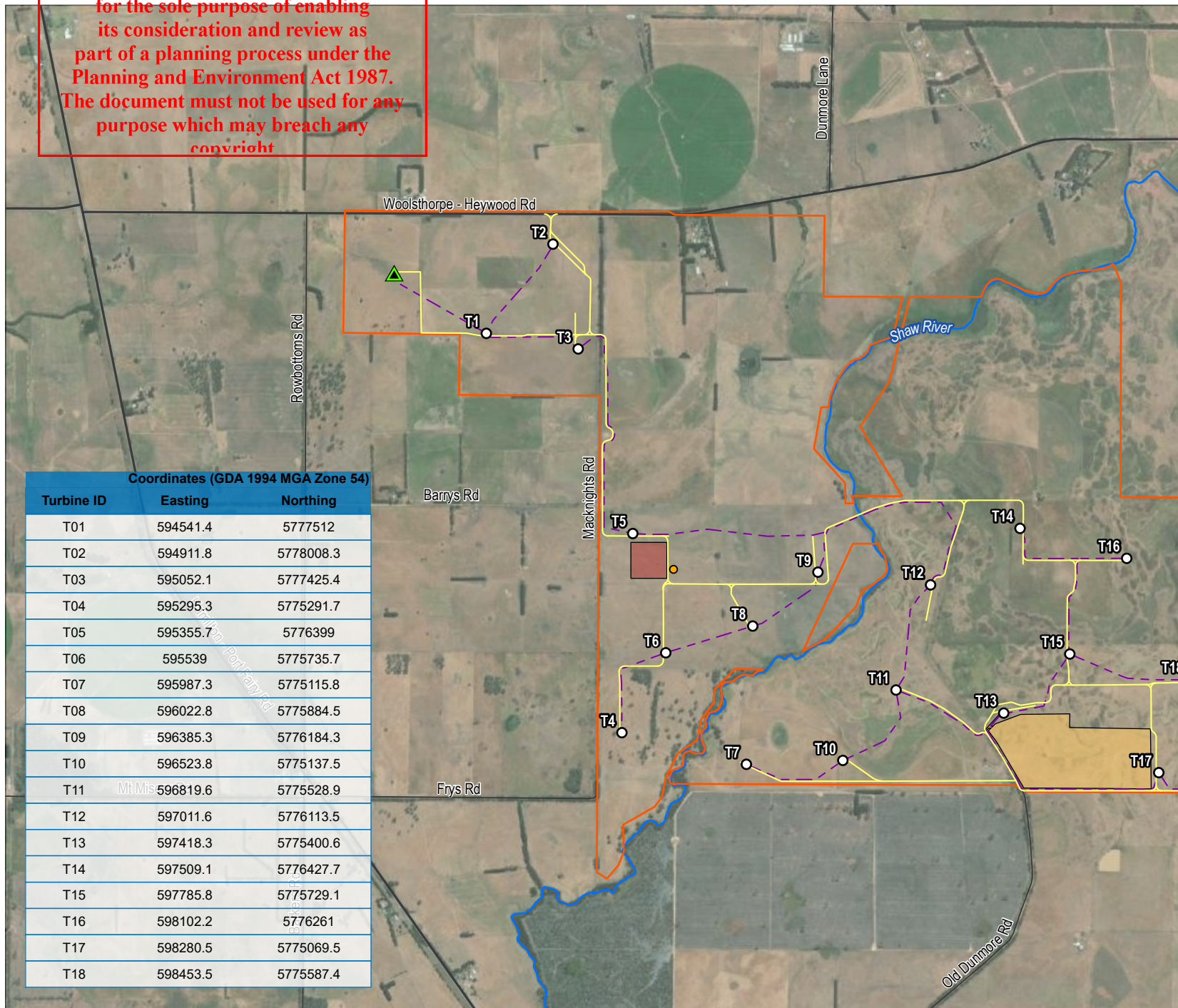




This copied document to be made available for the sole purpose of enabling its consideration and review as part of a planning process under the Planning and Environment Act 1987. The document must not be used for any purpose which may breach any copyright

DATE: 10/06/22 PROJECT: 754MILE/ENG/657 FILE: 287657\_01\_P07\_GIS DOC REFERENCE: 287657\_02\_FIGS\_A4PRX\_V06

Coordinates (GDA 1994 MGA Zone 54)		
Turbine ID	Easting	Northing
T01	594541.4	5777512
T02	594911.8	5778008.3
T03	595052.1	5777425.4
T04	595295.3	5775291.7
T05	595355.7	5776399
T06	595539	5775735.7
T07	595987.3	5775115.8
T08	596022.8	5775884.5
T09	596385.3	5776184.3
T10	596523.8	5775137.5
T11	596819.6	5775528.9
T12	597011.6	5776113.5
T13	597418.3	5775400.6
T14	597509.1	5776427.7
T15	597785.8	5775729.1
T16	598102.2	5776261
T17	598280.5	5775069.5
T18	598453.5	5775587.4



**LEGEND**

- Turbine location
- Concrete batch plant
- Permanent met mast
- Major road
- Local road
- Watercourse
- Underground cable
- Access track
- Construction compound
- Quarry area
- Willatook Wind Farm boundary

**ADVERTISED PLAN**

SOURCE:  
Willatook Wind Farm boundary, turbine locations and site infrastructure from Wind Prospect.  
Roads and watercourses from Vicmap.  
Imagery from ArcGIS Online (various capture dates).

0 400 800 m

SCALE 1:30,000

PAGE SIZE: A4

PROJECTION: GDA 1994 MGA Zone 54

WIND PROSPECT

WILLATOOK WIND FARM

**FIGURE MB9**

Project overview

DISCLAIMER: THIS FIGURE HAS BEEN PRODUCED FOR INTERNAL REVIEW ONLY AND MAY CONTAIN INCONSISTENCIES OR OMISSIONS. IT IS NOT INTENDED FOR PUBLICATION.



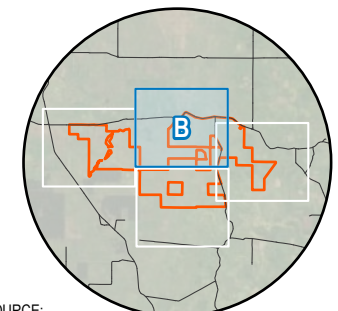
This copied document to be made available for the sole purpose of enabling its consideration and review as part of a planning process under the Planning and Environment Act 1987. The document must not be used for any purpose which may breach any copyright

Coordinates (GDA 1994 MGA Zone 54)		
Turbine ID	Easting	Northing
T28	601416	5777790.9
T33	602181	5775352.9
T38	602652	5775569.9
T41	602978.2	5776743.8
T42	602981.6	5777383
T45	603085	5775833.9
T46	603504	5777464
T47	604412.6	5777217.7
T48	604705.9	5777584.4

## LEGEND

- Turbine location
- Concrete batch plant
- ▲ Permanent met mast
- Major road
- ~ Watercourse
- - - Underground cable
- Access track
- Construction compound
- Willatook Wind Farm boundary

# ADVERTISED PLAN



SOURCE:  
Willatook Wind Farm boundary, turbine locations and site infrastructure from Wind Prospect.  
Roads and watercourses from Vicmap.  
Imagery from ArcGIS Online (various capture dates).



0 400 800 m  
SCALE 1:30,000  
PAGE SIZE: A4  
PROJECTION: GDA 1994 MGA Zone 54

WIND PROSPECT

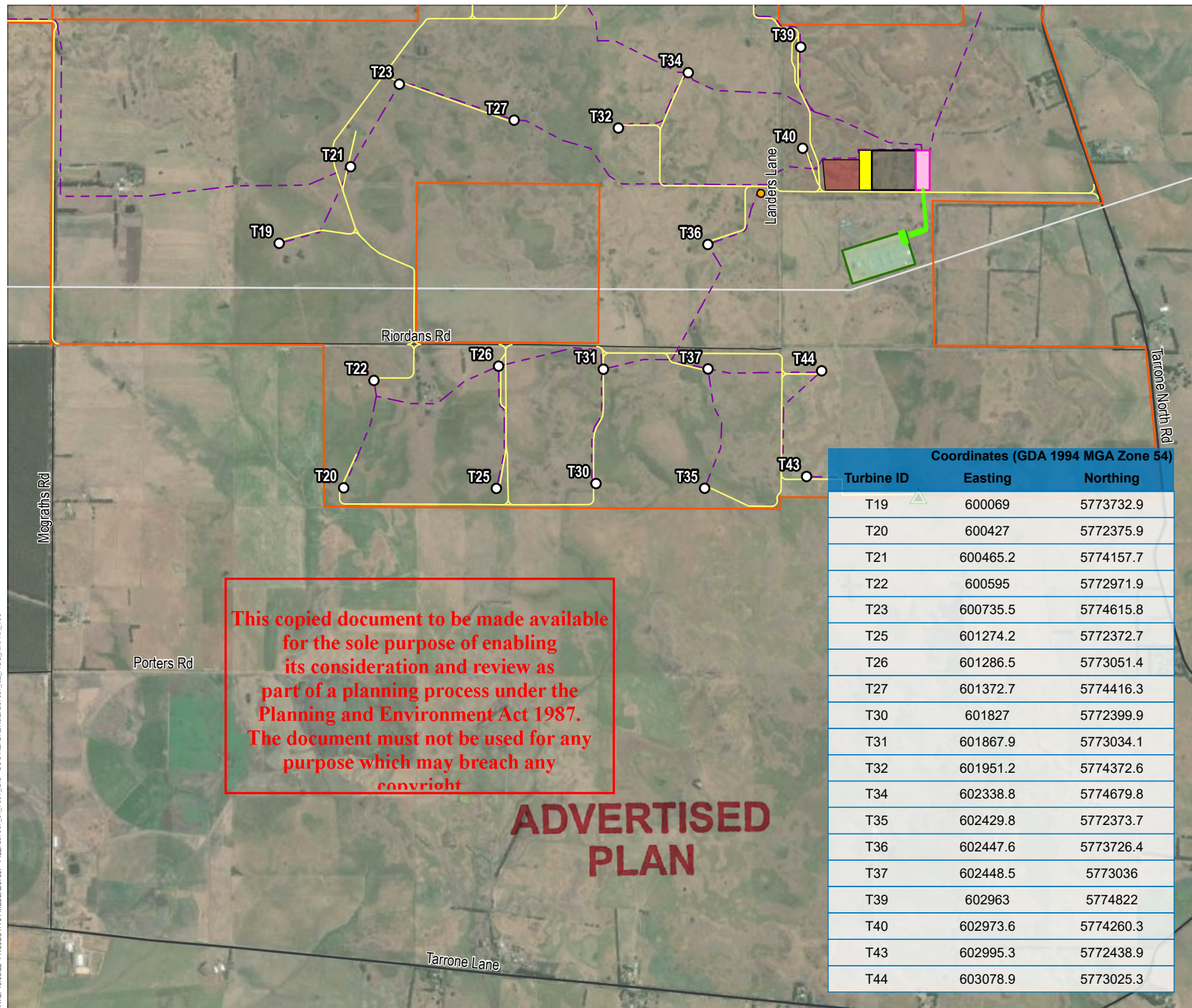
WILLATOOK WIND FARM

FIGURE MB10

Project overview



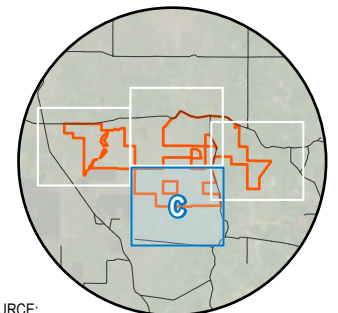




Coordinates (GDA 1994 MGA Zone 54)		
Turbine ID	Easting	Northing
T19	600069	5773732.9
T20	600427	5772375.9
T21	600465.2	5774157.7
T22	600595	5772971.9
T23	600735.5	5774615.8
T25	601274.2	5772372.7
T26	601286.5	5773051.4
T27	601372.7	5774416.3
T30	601827	5772399.9
T31	601867.9	5773034.1
T32	601951.2	5774372.6
T34	602338.8	5774679.8
T35	602429.8	5772373.7
T36	602447.6	5773726.4
T37	602448.5	5773036
T39	602963	5774822
T40	602973.6	5774260.3
T43	602995.3	5772438.9
T44	603078.9	5773025.3

### LEGEND

- Turbine location
- Concrete batch plant
- Permanent met mast
- Major road
- Local road
- Underground cable
- Access track
- 500kV Moorabool-Heywood transmission line
- Transmission line and grid connection infrastructure
- Substation 33kV/220kV
- Battery energy storage system
- Construction compound
- Operations and maintenance facility
- Tarrone Terminal Station
- Willatook Wind Farm boundary



SOURCE:  
Willatook Wind Farm boundary, turbine locations and site infrastructure from Wind Prospect.  
Roads and watercourses from Vicmap.  
Imagery from ArcGIS Online (various capture dates).



0 400 800  
m  
SCALE 1:30,000  
PAGE SIZE: A4  
PROJECTION: GDA 1994 MGA Zone 54

WIND PROSPECT

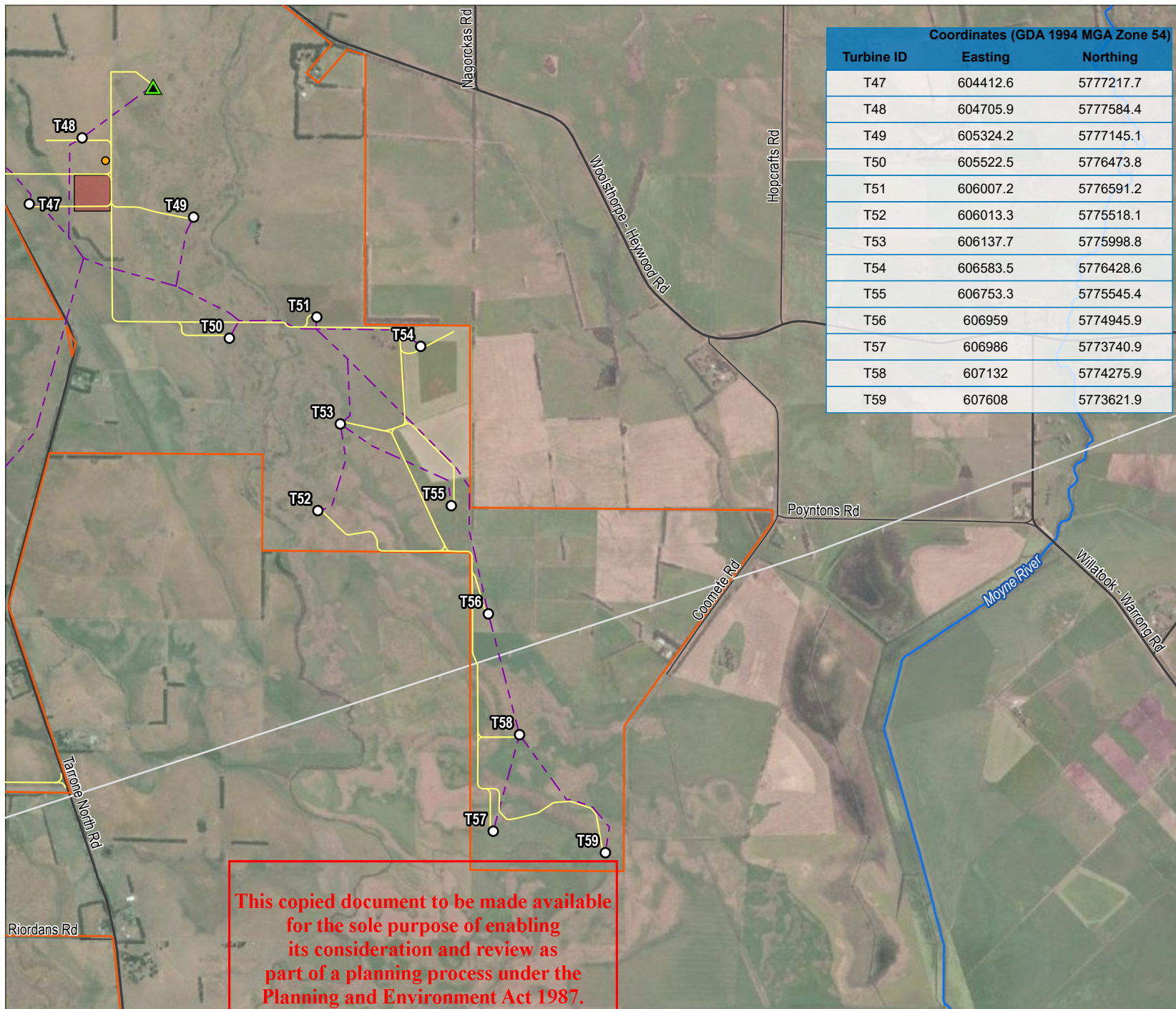
WILLATOOK WIND FARM

FIGURE MB11

Project overview





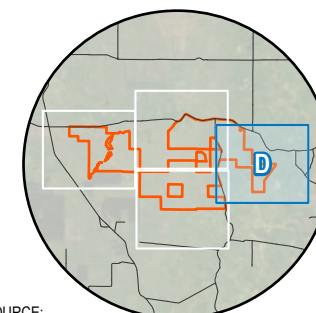


Coordinates (GDA 1994 MGA Zone 54)		
Turbine ID	Easting	Northing
T47	604412.6	5777217.7
T48	604705.9	5777584.4
T49	605324.2	5777145.1
T50	605522.5	5776473.8
T51	606007.2	5776591.2
T52	606013.3	5775518.1
T53	606137.7	5775998.8
T54	606583.5	5776428.6
T55	606753.3	5775545.4
T56	606959	5774945.9
T57	606986	5773740.9
T58	607132	5774275.9
T59	607608	5773621.9

## LEGEND

- Turbine location
- Concrete batch plant
- ▲ Permanent met mast
- Major road
- Local road
- ~ Watercourse
- - - Underground cable
- Access track
- 500kV Moorabool-Heywood transmission line
- Construction compound
- Willatook Wind Farm boundary

## ADVERTISED PLAN



SOURCE:  
Willatook Wind Farm boundary, turbine locations and site infrastructure from Wind Prospect.  
Roads and watercourses from Vicmap.  
Imagery from ArcGIS Online (various capture dates).



0 400 800 m  
SCALE 1:30,000  
PAGE SIZE: A4  
PROJECTION: GDA 1994 MGA Zone 54

WIND PROSPECT

WILLATOOK WIND FARM

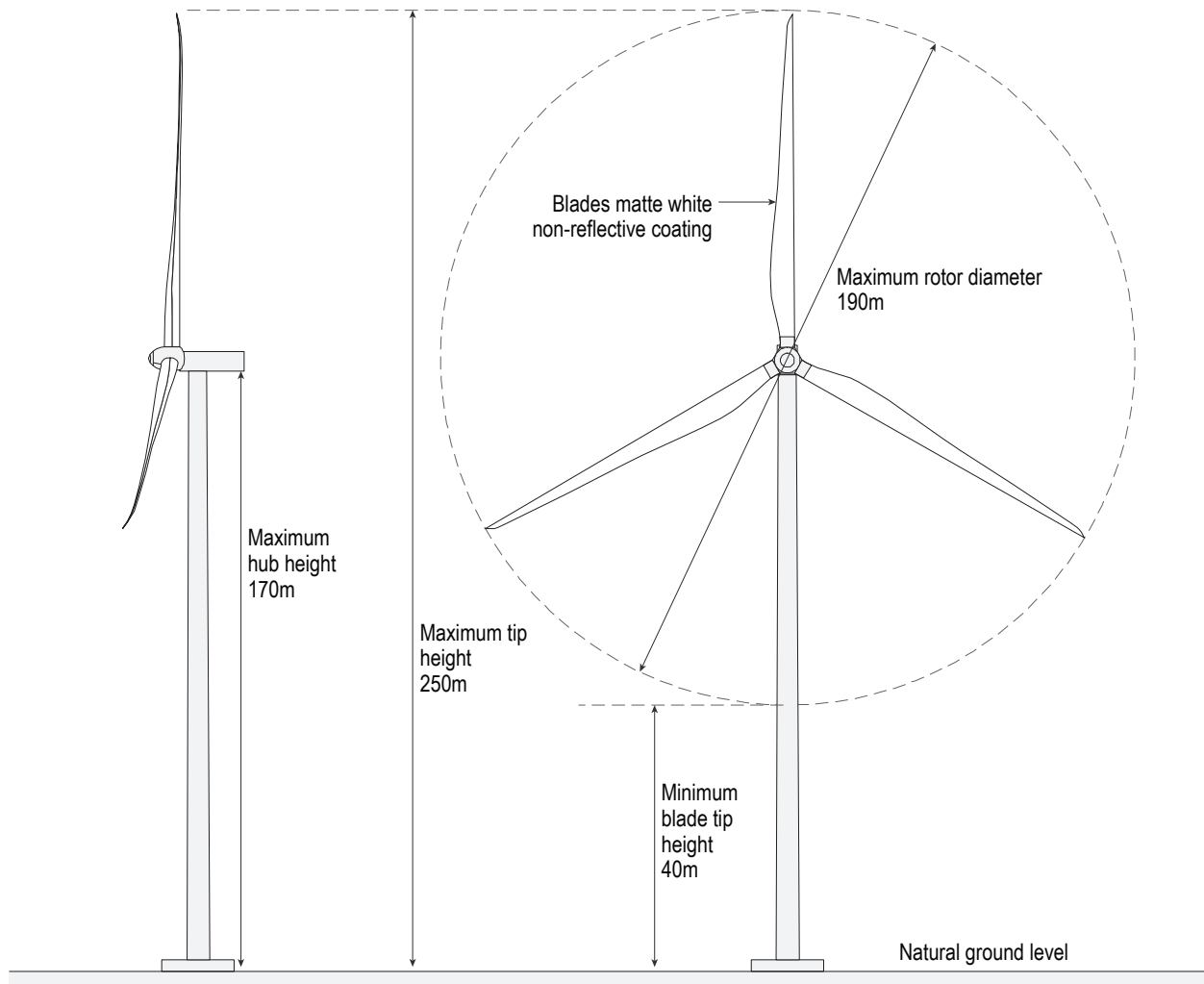
FIGURE MB12

Project overview



This copied document to be made available for the sole purpose of enabling its consideration and review as part of a planning process under the Planning and Environment Act 1987. The document must not be used for any purpose which may breach any copyright

This copied document to be made available  
for the sole purpose of enabling  
its consideration and review as  
part of a planning process under the  
Planning and Environment Act 1987.  
The document must not be used for any  
purpose which may breach any  
copyright



NOT TO SCALE

**ADVERTISED  
PLAN**

SCALE: NOT TO SCALE  
PAGE SIZE: A4

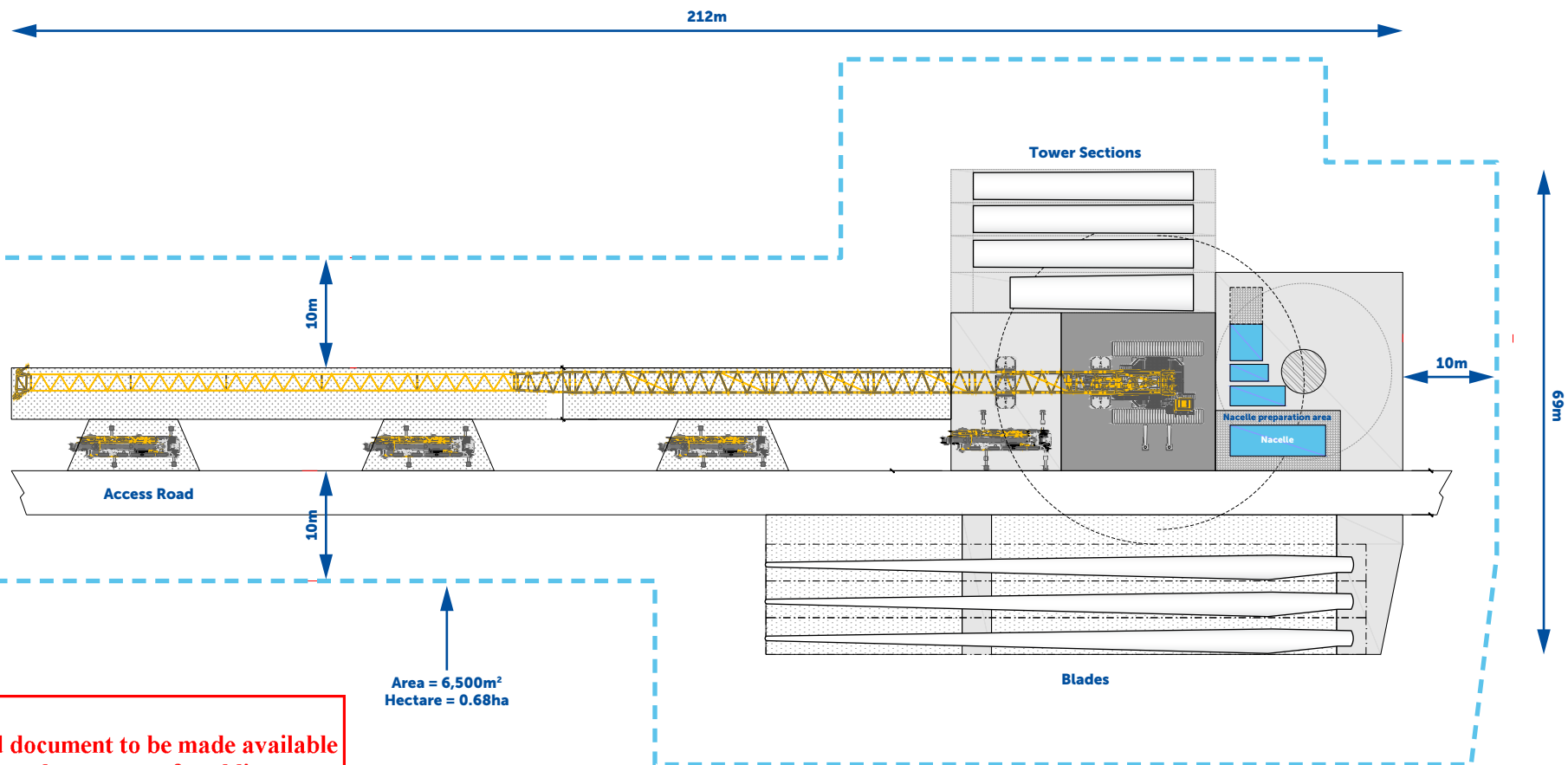
SOURCE:  
Turbine design from Wind Prospect.

WIND PROSPECT  
WILLATOOK WIND FARM  
FIGURE MB13

Maximum and minimum wind  
turbine dimensions







This copied document to be made available for the sole purpose of enabling its consideration and review as part of a planning process under the Planning and Environment Act 1987. The document must not be used for any purpose which may breach any copyright

**ADVERTISED  
PLAN**

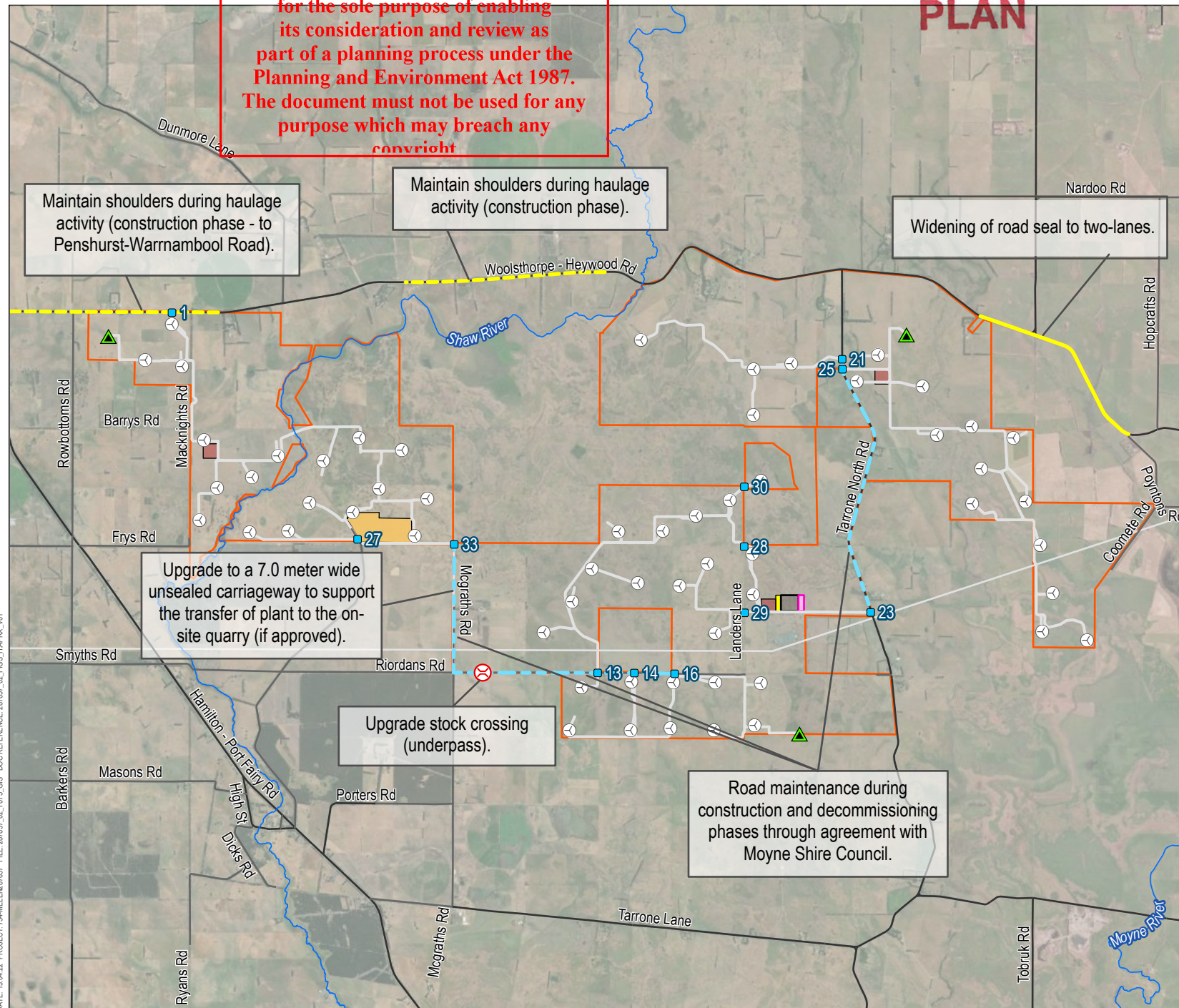
WIND PROSPECT  
WILLATOOK WIND FARM  
FIGURE MB14

Indicative wind turbine  
construction layout



# ADVERTISED PLAN

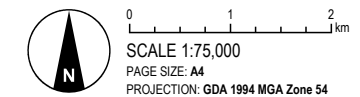
This copied document to be made available for the sole purpose of enabling its consideration and review as part of a planning process under the Planning and Environment Act 1987. The document must not be used for any purpose which may breach any copyright



## LEGEND

- Turbine location
- Access gate
- Met mast location
- Upgrade stock crossing (underpass)
- Road upgrades / maintenance**
  - Maintain shoulders during haulage activity
  - Widen to two-lane seal
  - Public roads used for movement between WTG areas
  - Watercourse
  - Access track
  - Road
  - Local Road
  - 500kV Moorabool-Heywood transmission line
  - Willatook Wind Farm boundary
  - Substation
  - Battery energy storage system
  - Construction compound
  - Operations and maintenance facility
  - Quarry area

SOURCE:  
Willatook Wind Farm boundary from Wind Prospect.  
Watercourses and roads from Vicmap.  
Imagery from ESRI (various capture dates).



WIND PROSPECT

WILLATOOK WIND FARM

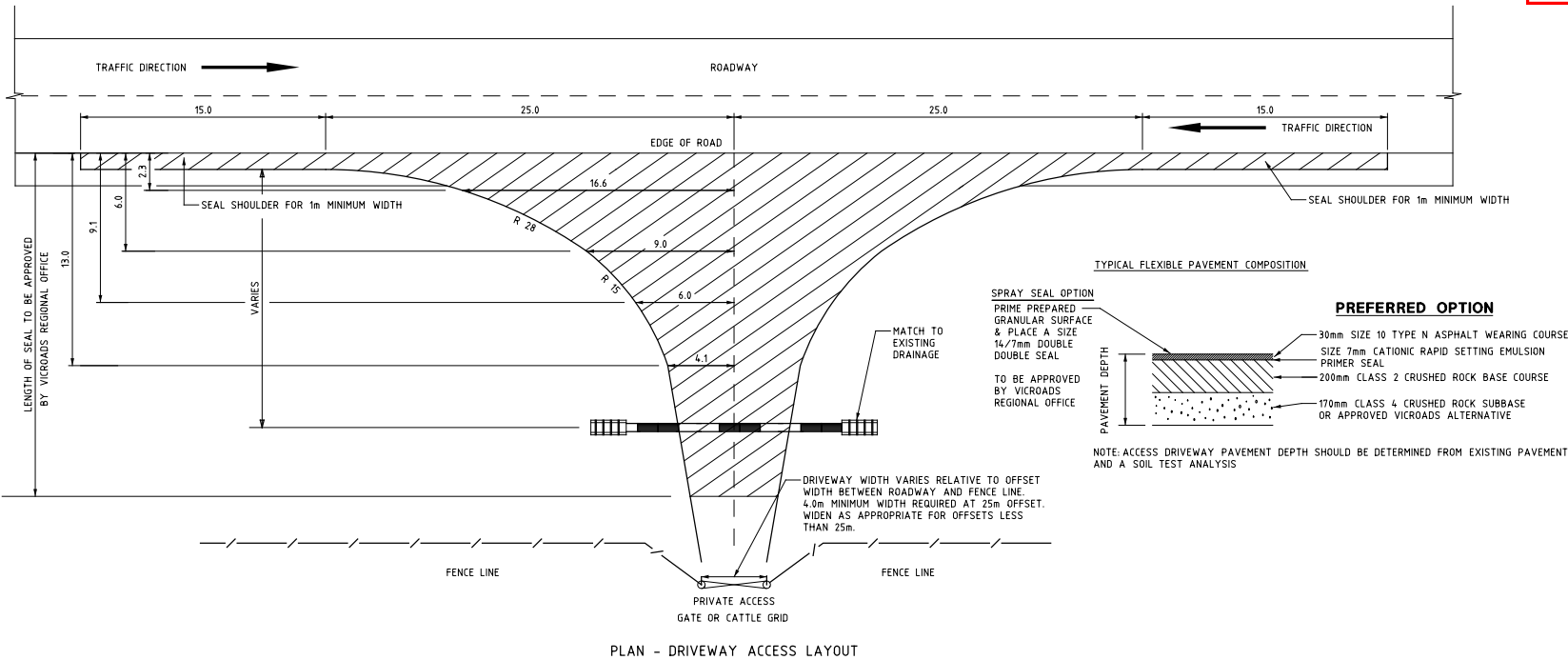
FIGURE MB15

Proposed road mitigation works





Conceptual access designs  
FOR PLANNING PURPOSES ONLY



**SPRAY SEAL OPTION**  
PRIME PREPARED GRANULAR SURFACE & PLACE A SIZE 14/7mm DOUBLE DOUBLE SEAL  
TO BE APPROVED BY VICROADS REGIONAL OFFICE

**TYPICAL FLEXIBLE PAVEMENT COMPOSITION**

PAVEMENT DEPTH

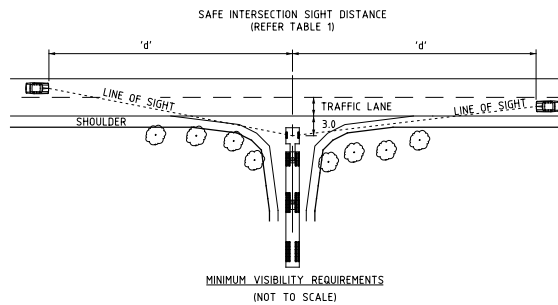
**PREFERRED OPTION**

- 30mm SIZE 10 TYPE N ASPHALT WEARING COURSE
- SIZE 7mm CATIONIC RAPID SETTING EMULSION PRIMER SEAL
- 200mm CLASS 2 CRUSHED ROCK BASE COURSE
- 170mm CLASS 4 CRUSHED ROCK SUBBASE OR APPROVED VICROADS ALTERNATIVE

NOTE: ACCESS DRIVEWAY PAVEMENT DEPTH SHOULD BE DETERMINED FROM EXISTING PAVEMENT AND A SOIL TEST ANALYSIS

**REFERENCES AND NOTES:**

ALL DIMENSIONS ARE IN METRES  
DESIGNED FOR: 26m LONG B-DOUBLE, 19m LONG SEMI - TRAILERS  
AUSTROADS GUIDE ROAD DESIGN PART 4 AND VR SUPPLEMENT TO AGRD PART 4  
AUSTROADS GUIDE ROAD DESIGN PART 4A AND VR SUPPLEMENT TO AGRD PART 4A  
AUSTROADS GUIDE TO ASSET MANAGEMENT PART 5  
AUSTROADS GUIDE TO PAVEMENT TECHNOLOGY PART 2  
AUSTROADS GUIDE TO TRAFFIC MANAGEMENT & VICROADS SUPPLEMENTS  
VICROADS SELECTION AND DESIGN OF PAVEMENT & SURFACING RC 500.22  
SD 1991 DRIVEABLE CULVERT ENDWALLS - TYPE 1



DESIGN SPEED (Km/h)	'd' SAFE INTERSECTION SIGHT DISTANCE (m)	CORRECTION (m)							
		ROADWAY UPGRADE				ROADWAY DOWNGRADE			
		2%	4%	6%	8%	2%	4%	6%	8%
60	123	-2	-4	-6	-7	2	5	8	11
70	151	-3	-5	-8	-10	3	7	11	15
80	181	-4	-7	-10	-13	4	9	14	20
90	226	-5	-9	-13	-16	5	11	18	25
100	262	-6	-11	-16	-20	6	14	22	31
110	300	-7	-13	-19	-24	8	17	26	38

THE DESIGN SPEED IS ASSUMED TO BE 10km/h GREATER THAN THE POSTED SPEED LIMIT FOR RURAL HIGHWAYS AND ROADS

TABLE 1

**ADVERTISED PLAN**

This copied document to be made available for the sole purpose of enabling its consideration and review as part of a planning process under the Planning and Environment Act 1987. The document must not be used for any purpose which may breach any copyright

SOURCE:  
Design adapted from VicRoads 'Access & Stopping Bays SD2065  
Truck Access to Rural Properties Type B' 13-8-12.



SCALE: NOT TO SCALE  
PAGE SIZE: A4

WIND PROSPECT

WILLATOOK WIND FARM

FIGURE MB16

Conceptual access design









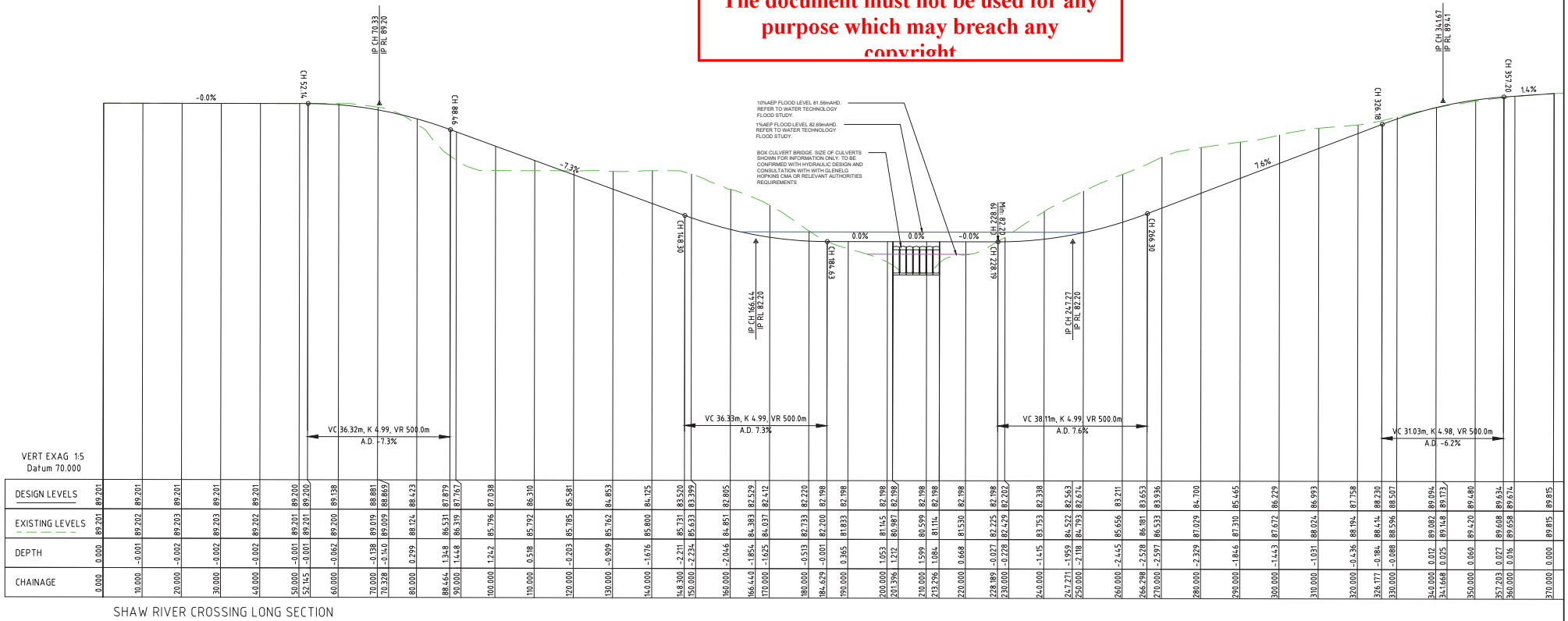








**This copied document to be made available  
for the sole purpose of enabling  
its consideration and review as  
part of a planning process under the  
Planning and Environment Act 1987.  
The document must not be used for any  
purpose which may breach any  
copyright**



## ADVERTISED PLAN

[illegible]

© COPYRIGHT  
THESE DOCUMENTS AND THE  
INFORMATION, IDEAS AND  
CONCEPTS CONTAINED HEREIN  
ARE PROTECTED BY COPYRIGHT  
AND REMAIN THE PROPERTY OF  
P.J. YTTTRUP & ASSOCIATES PTY  
LTD. NO LICENSE IS IMPLIED,  
EXPRESSED OR ASSIGNED  
UNLESS ACKNOWLEDGED  
SEPARATELY IN WRITING.

**YTTTRUP**

**P.J. YTTTRUP &  
ASSOCIATES PTY LTD  
CONSULTING ENGINEERS**  
30 ROBERTS ROAD  
BELMONT VIC 3216  
P: 03 5240 3288  
E: [enquiries@pyt.com.au](mailto:enquiries@pyt.com.au)  
W: [www.ytttrup.com](http://www.ytttrup.com)  
ACN: 005 900 919 ABN: 71 087 799 200

CLIENT  
WIND PROSPECT Pty Ltd

PROJECT	WILLATOOK WIND FARM
---------	---------------------

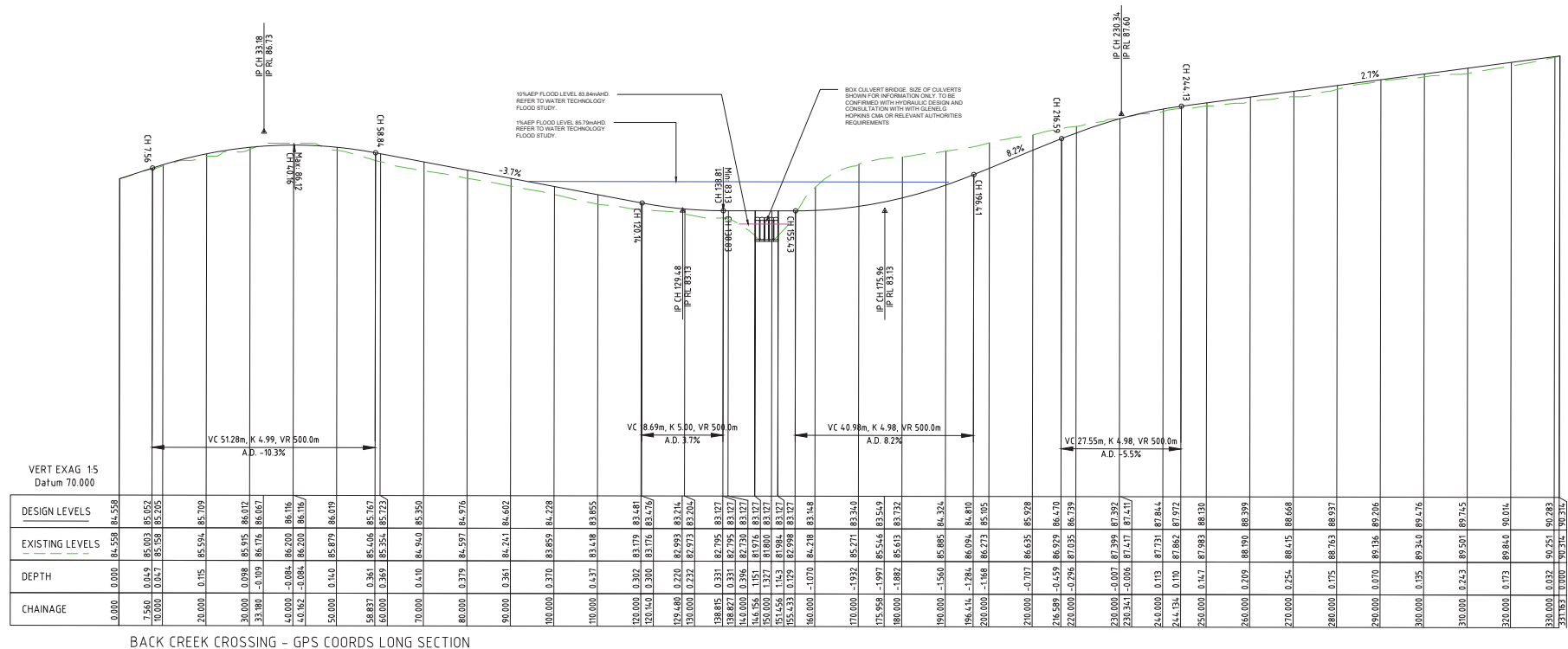
DRAWING TITLE  
PROPOSED SHAW RIVER CROSSING  
LONG SECTION

ENGINEER	DRAWN	CHECKED	SCALE @ A1
BC	BC	NM	1:500

STATUS INFORMATION

PROJECT No.	DRG No.	REV
23686	C04	X1

**ADVERTISED  
PLAN**

[illegible]

© COPYRIGHT  
THESE DOCUMENTS AND THE  
INFORMATION, IDEAS AND  
CONCEPTS CONTAINED HEREIN  
ARE PROTECTED BY COPYRIGHT  
AND REMAIN THE PROPERTY OF  
P.J. YTTUP & ASSOCIATES PT  
LTD. NO LICENSE IS IMPLIED,  
EXPRESSED OR ASSIGNED  
UNLESS ACKNOWLEDGED  
SEPARATELY IN WRITING.

**YTTRUP**

CLIENT	WIND PROSPECT Pty Ltd
--------	-----------------------

PROJECT  
WILLATOOK WIND FARM

DRAWING TITLE  
PROPOSED BACK CREEK CROSSING  
LONG SECTION

ENGINEER	DRAWN	CHECKED	SCALE @ A
BC	BC	NM	1:500

STATUS	<b>INFORMATION</b>	
NOT FOR CONSTRUCTION		
PROJECT No.	DRG No.	REV
<b>23686</b>	<b>C05</b>	<b>X1</b>



# ADVERTISED PLAN

## Proposed battery energy storage system layout FOR PLANNING PURPOSES ONLY

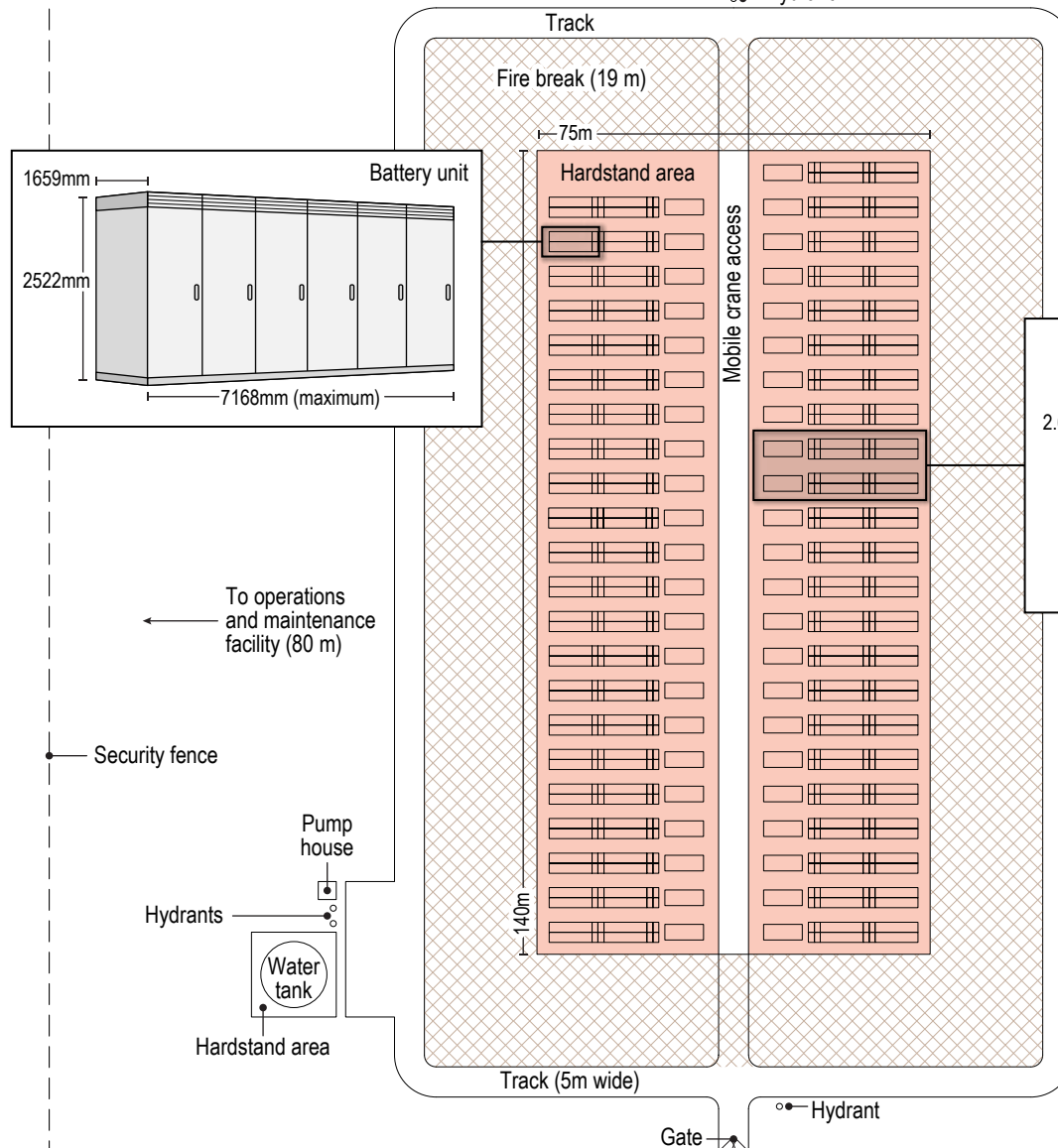
### General notes:

1. The layouts are indicative only
2. 2.4m minimum front clearance required for maintenance access between battery units
3. If perimeter fence is proposed:
  - a. Additional clearance required for battery unit door swing
  - b. Gates required for maintenance to access the front of the battery unit and battery inverters
4. Water tank sized to hold a minimum of 288,000 litres
5. Battery dimensions are approximate. Actual dimensions may vary.

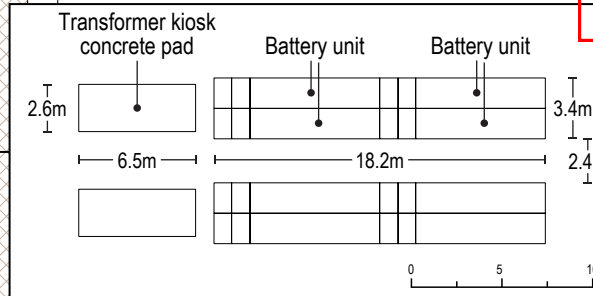
### LEGEND

- Battery layout design
- Battery area
- ▨ Fire break (19 m)

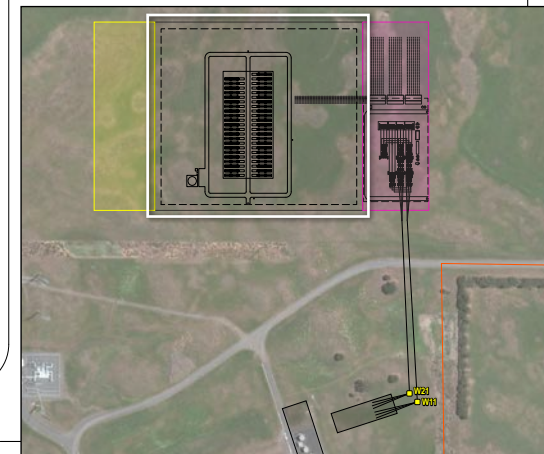
This copied document to be made available for the sole purpose of enabling its consideration and review as part of a planning process under the Planning and Environment Act 1987. The document must not be used for any purpose which may breach any copyright



To Substation (100 m) →



● Hydrant



SOURCE:  
Willatook Wind Farm boundary and battery infrastructure  
from Wind Prospect.  
Imagery from ArcGIS Online (various capture dates).



0 20 40  
SCALE 1:1,250  
PAGE SIZE: A4  
PROJECTION: GDA 1994 MGA Zone 54

WIND PROSPECT

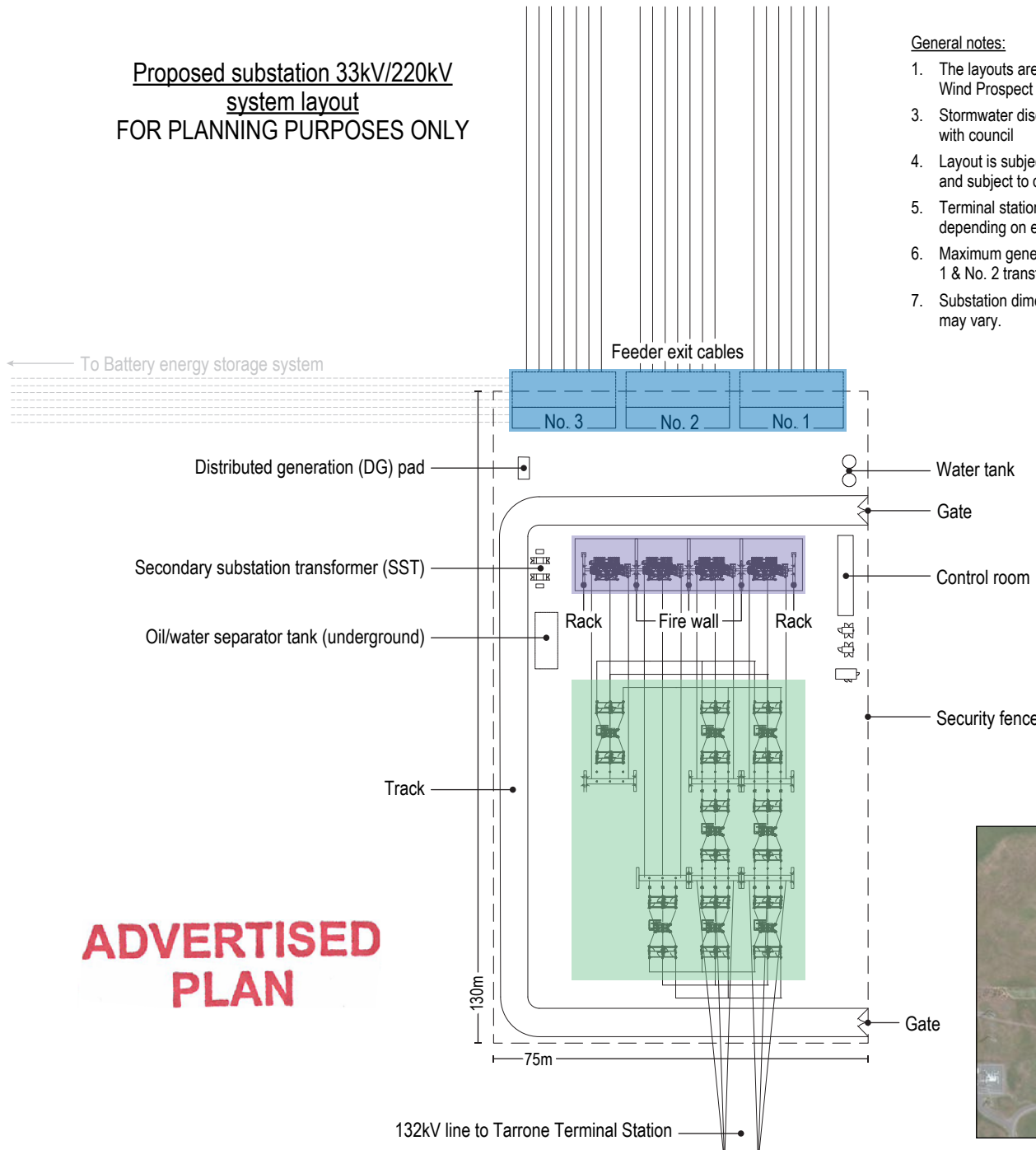
WILLATOOK WIND FARM

FIGURE MB22

Battery energy storage system  
concept plan



Proposed substation 33kV/220kV  
system layout  
FOR PLANNING PURPOSES ONLY



General notes:

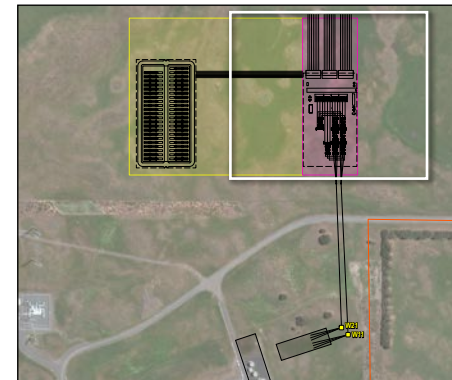
1. The layouts are indicative only and recommended by Wind Prospect
3. Stormwater discharge point to be determined by agreement with council
4. Layout is subject to receipt of AEMO functional requirements and subject to detailed design
5. Terminal station outgoing voltage to wind farm 33kV depending on engineering studies
6. Maximum generation connected to common busbar (via No. 1 & No. 2 transformers) 500mW
7. Substation dimensions are approximate. Actual dimensions may vary.

**LEGEND**

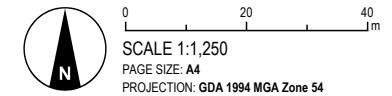
- Substation layout design
- 500kV switchyard
- Transformer area
- 33kV switchyard

**This copied document to be made available for the sole purpose of enabling its consideration and review as part of a planning process under the Planning and Environment Act 1987. The document must not be used for any purpose which may breach any copyright**

**ADVERTISED PLAN**



SOURCE:  
Willatook Wind Farm boundary and substation infrastructure from Wind Prospect.  
Imagery from ArcGIS Online (various capture dates).



WIND PROSPECT

WILLATOOK WIND FARM

FIGURE MB23

On-site substation concept plan





Section view of proposed  
132kV Transformer Bay  
FOR PLANNING PURPOSES ONLY

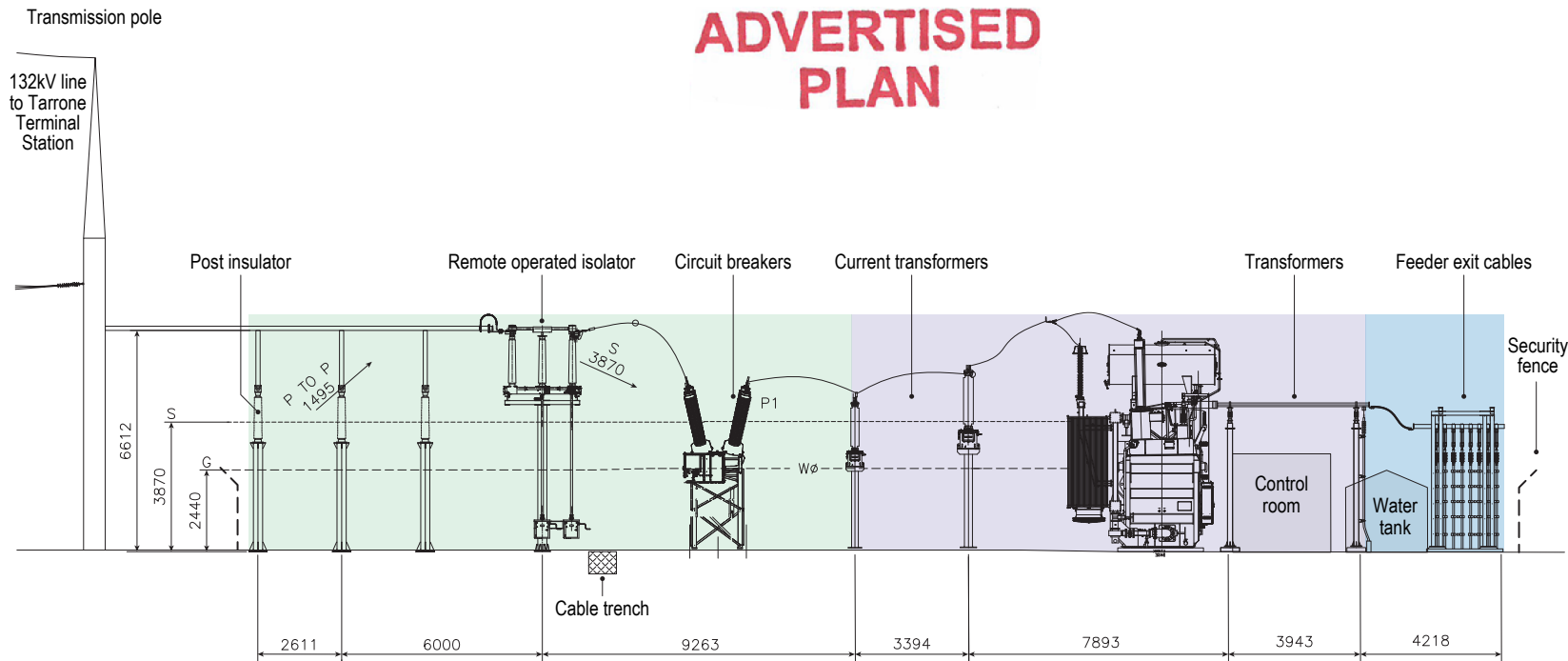
General notes:

1. The layouts are indicative only and recommended by Wind Prospect
2. Transformer Bay dimensions are approximate. Actual dimensions may vary. Dimensions displayed in millimetres.

LEGEND

- Substation layout design
- 500kV switchyard
- Transformer area
- 33kV switchyard

ADVERTISED  
PLAN



This copied document to be made available  
for the sole purpose of enabling  
its consideration and review as  
part of a planning process under the  
Planning and Environment Act 1987.  
The document must not be used for any  
purpose which may breach any  
copyright

SOURCE:  
Section by Tetra Tech Coffey adapted from Wind Prospect  
detailed designs.



SCALE: NOT TO SCALE  
PAGE SIZE: A4

WIND PROSPECT

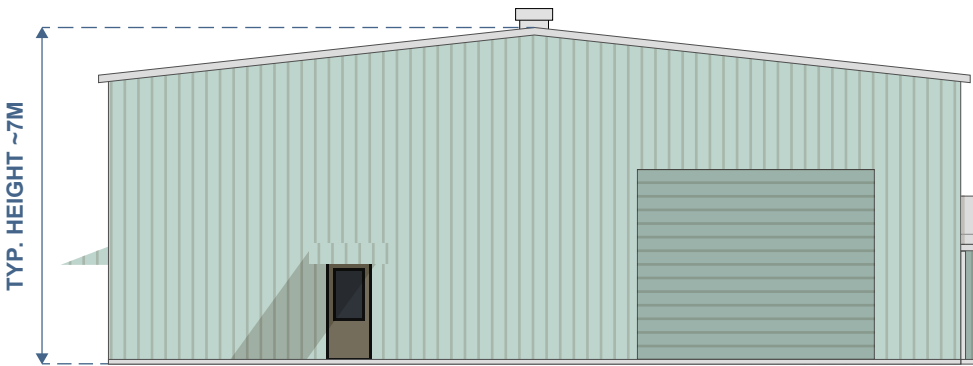
WILLATOOK WIND FARM

FIGURE MB24

Section view of on-site substation

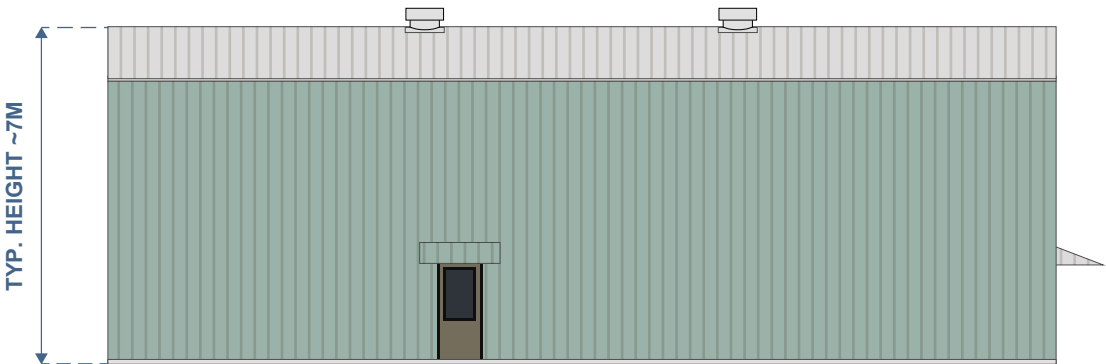


ADVERTISED  
PLAN

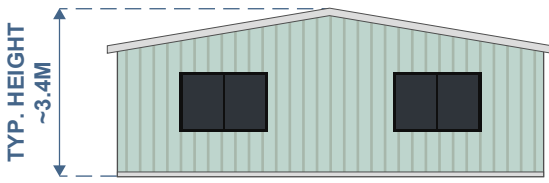


WORKSHOP FRONT ELEVATION  
NOT TO SCALE

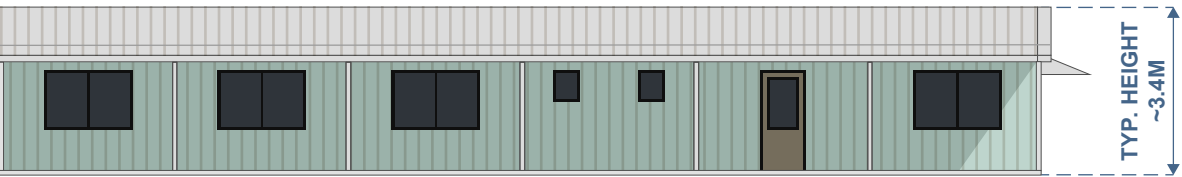
ROLLER DOOR  
width 5m x height 4m



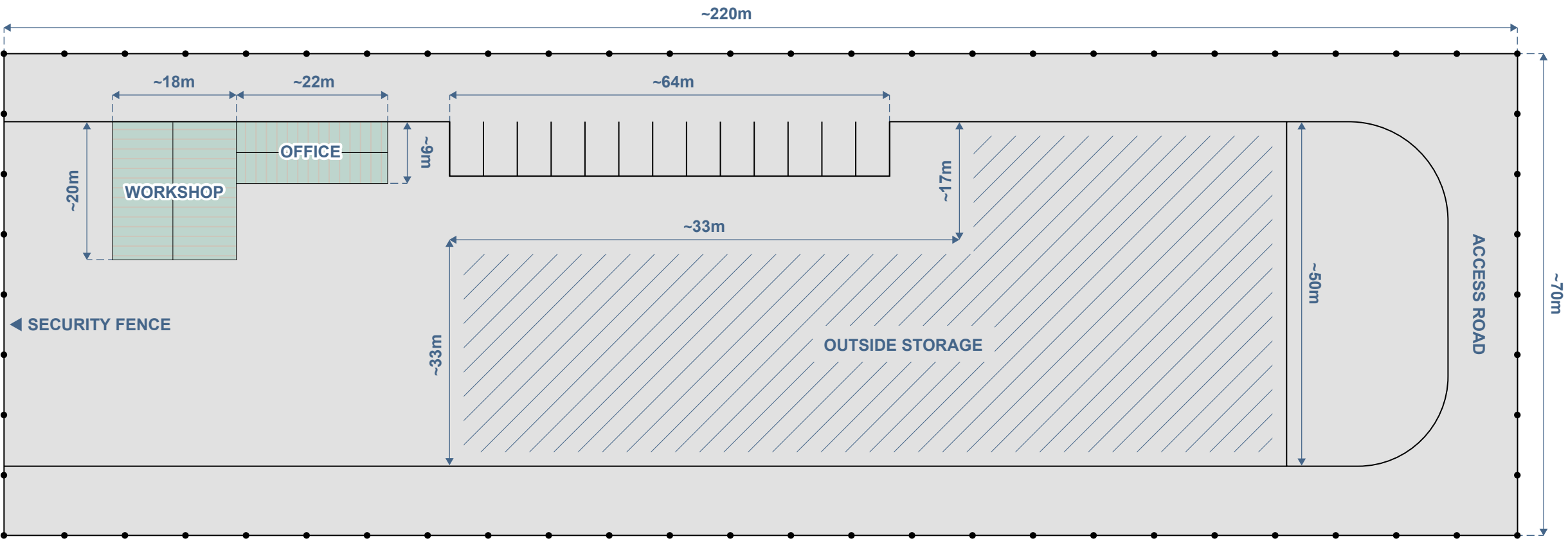
WORKSHOP SIDE ELEVATION  
NOT TO SCALE



OFFICE COMPLEX SIDE ELEVATION  
NOT TO SCALE



OFFICE COMPLEX FRONT ELEVATION  
NOT TO SCALE



PROJECT		Willatook Wind Farm	
TITLE		Operations & Maintenance Facility - Site Plan	
DATE	02/05/2022	PRODUCED	WWF
CHECKED		APPROVED	
STATUS	Draft	REV	MB25

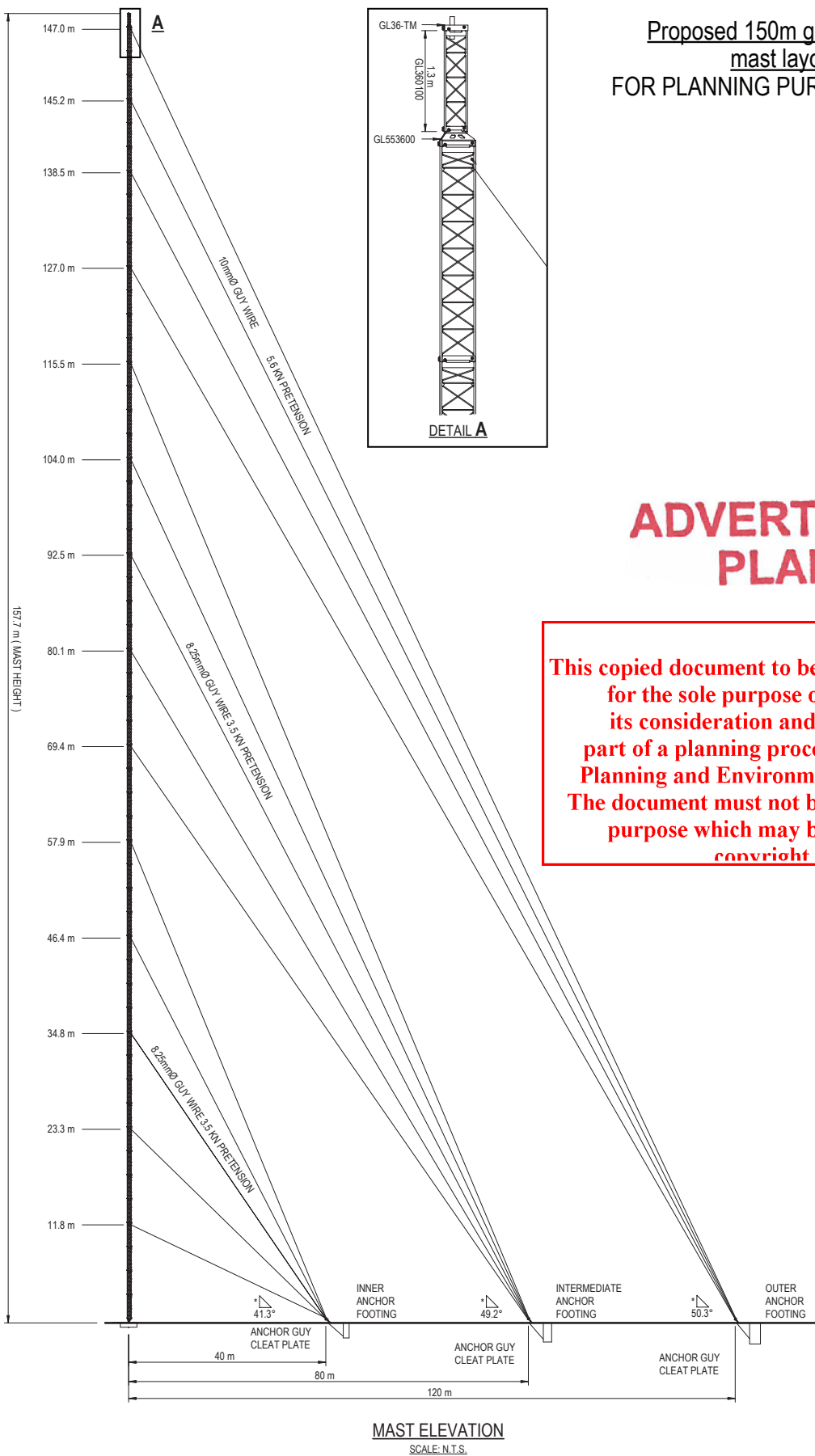
This copied document to be made available for the sole purpose of enabling its consideration and review as part of a planning process under the Planning and Environment Act 1987. The document must not be used for any purpose which may breach any copyright



**WILLATOOK**  
Wind Farm



Proposed 150m guyed lattice  
mast layout  
FOR PLANNING PURPOSES ONLY



**ADVERTISED  
PLAN**

This copied document to be made available  
for the sole purpose of enabling  
its consideration and review as  
part of a planning process under the  
Planning and Environment Act 1987.  
The document must not be used for any  
purpose which may breach any  
copyright

SCALE: NOT TO SCALE  
PAGE SIZE: A4

SOURCE:  
Guyed lattice mast design from Wind Prospect.

WIND PROSPECT  
WILLATOOK WIND FARM

FIGURE MB26

General arrangement  
150m guyed lattice mast

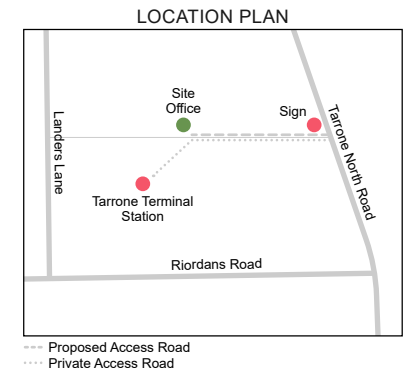


DISCLAIMER: THIS FIGURE HAS BEEN PRODUCED FOR INTERNAL REVIEW ONLY AND MAY CONTAIN INCONSISTENCIES OR OMISSIONS. IT IS NOT INTENDED FOR PUBLICATION.

# ADVERTISED PLAN

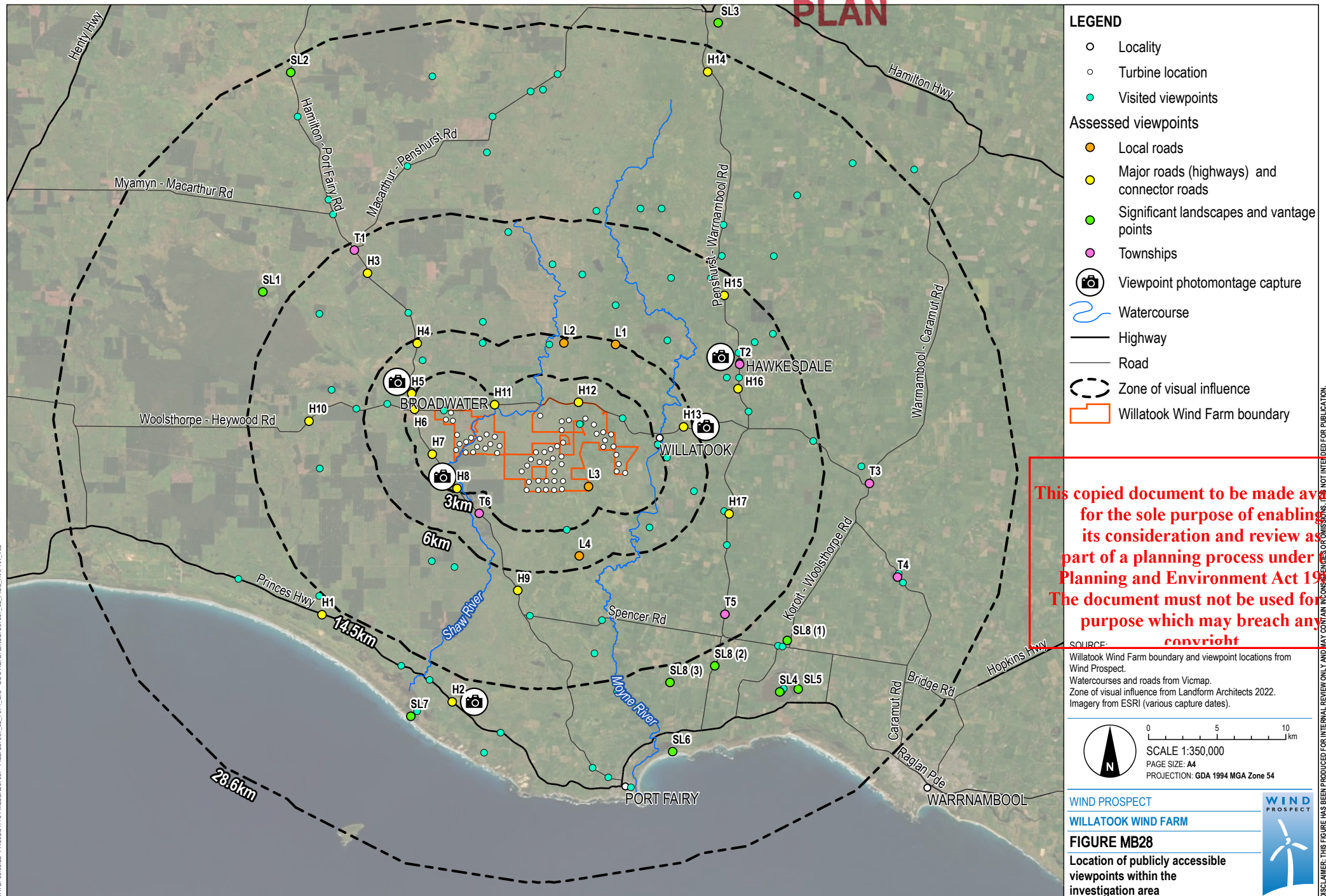


PROJECT			
Williatook Wind Farm			
TITLE			
INDICATIVE BUSINESS SIGN CONCEPT			
DATE	00/00/0000	PRODUCED	TBC
CHECKED	TBC	APPROVED	TBC
STATUS	Draft	REV	A



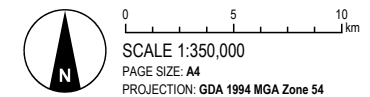


**ADVERTISED**  
**PLAN**



This copied document to be made available for the sole purpose of enabling its consideration and review as part of a planning process under the Planning and Environment Act 1987. The document must not be used for any purpose which may breach any copyright

**SOURCE:** **copyright**  
Willatook Wind Farm boundary and viewpoint locations from Wind Prospect.  
Watercourses and roads from Vicmap.  
Zone of visual influence from Landform Architects 2022.  
Imagery from ESRI (various capture dates).



WIND PROSPECT  
WILLATOOK WIND FARM

**FIGURE MB28**

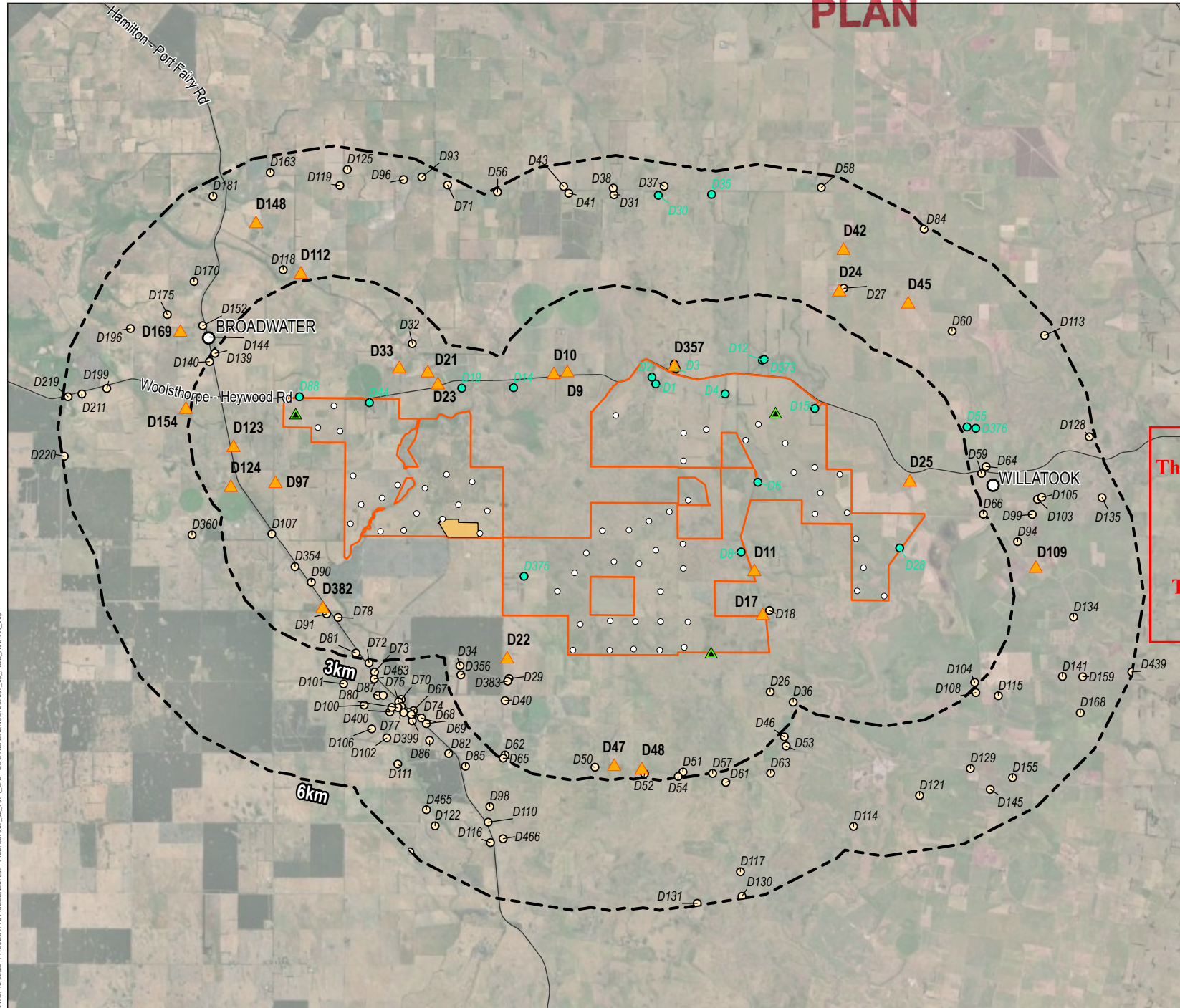
**Location of publicly accessible viewpoints within the investigation area**



DISCLAIMER: THIS FIGURE HAS BEEN PRODUCED FOR INTERNAL REVIEW ONLY AND MAY CONTAIN INCONSISTENCIES OR OMISSIONS. IT IS NOT INTENDED FOR PUBLICATION.



# ADVERTISED PLAN



## LEGEND

- Locality
- Turbine location
- ▲ Met mast location
- ▲ Viewpoint
- Non-stakeholder dwelling
- Stakeholder dwelling
- Road
- Quarry area
- - - Zone of visual influence
- Willatook Wind Farm boundary

**This copied document to be made available for the sole purpose of enabling its consideration and review as part of a planning process under the Planning and Environment Act 1987. The document must not be used for any purpose which may breach any copyright**

SOURCE:  
Willatook Wind Farm boundary from Wind Prospect.  
Localities and roads from Vicmap.  
Zone of visual influence and viewpoint locations from Landform Architects 2022.  
Imagery from ESRI (various capture dates).



0 1.5 3 km  
SCALE 1:125,000  
PAGE SIZE: A4  
PROJECTION: GDA 1994 MGA Zone 54

WIND PROSPECT

WILLATOOK WIND FARM

FIGURE MB29

**Dwellings assessed in ground-truthing assessment**





# ADVERTISED PLAN

