

DETAILS  
NOTATIONS

Bearing Datum is MGA2020 Zone 55. Coordinates are Plane Coordinates of ground distances based on a truncated MGA2020 coordinate value for BMT of E: 30526202 N: 58523217

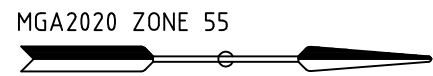
Levels are to Australian Height Datum as derived using GPS Height observations. The absolute accuracy of this determination is +/- 0.05m

Contour Interval = 0.1m

Trees are shown true to scale. Only significant trees are shown.

This survey has located surface features in accordance with client instructions and would generally include visible utility services. Underground services have been located from plans supplied by the client and from public records. The location of services can only be guaranteed by excavation. Prior to any demolition, excavation or construction on the site the relevant Authorities should be contacted to ascertain the possible locations of further services and detailed location of all services.

**WARNING:**  
A Title Re-establishment Survey has not been undertaken. Title boundaries shown hereon are compiled from the appropriate Titles and have been located as a best fit of existing fencing only.



LEGEND

- TELECOMMUNICATIONS PIT
- ELECTRICITY POLE
- ELECTRICITY POLE WITH LIGHT
- WATER METER
- FIRE PLUG
- WATER STOP VALVE
- WATER TAP
- IRRIGATION CONTROL BOX
- DRAINAGE GRAATED PIT
- DRAINAGE JUNCTION PIT
- SEWER PIT
- SEWER VENT
- GAS METER
- UNKNOWN UTILITY
- BOLLARD
- PHOTO POINT & DIRECTION
- UNDERGROUND DRAIN WITH INVERT LEVEL & PIPE SIZE
- OVERHEAD ELECTRICITY LINE

CLIENT: CLARKE HOPKINS CLARKE  
DETAILS: FEATURE & LEVEL SURVEY

PROJECT:

OUR LADY OF THE IMMACULATE CONCEPTION  
PRIMARY SCHOOL  
SUNSHINE 3020

**BW** Beveridge Williams  
development & environment consultants  
Melbourne ph : 03 9524 8888  
www.beveridgewilliams.com.au

SURVEYORS REF:

2100153

SCALE: ORIGINAL  
SHEET: 1250  
SIZE: A1  
VERSION: B  
FEBRUARY 2021  
SHEET 1 OF 1  
LEGENDS ARE MEASUREMENTS

SURVEYOR: J.V. CHECKED: S.W. MEASUREMENTS: 40 JT

DRAWN: K.G. CAD REFERENCE: K:\00SDATA\1\200153-EL Rev B.dwg

REV	BY	AMENDMENTS	DATE
B	SW	TITLE BOUNDARIES ADDED (COMPILED)	11/2/21
D			
E			
F			
G			

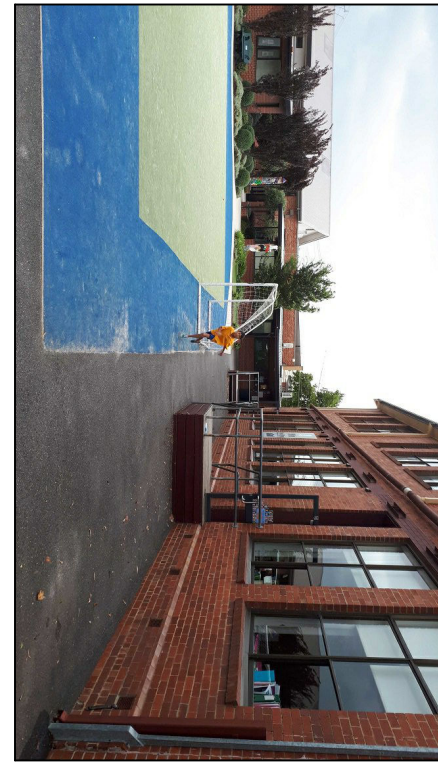


PHOTO 2 - BITUMEN PATH BETWEEN LIBRARY & SYNTHETIC COURTS

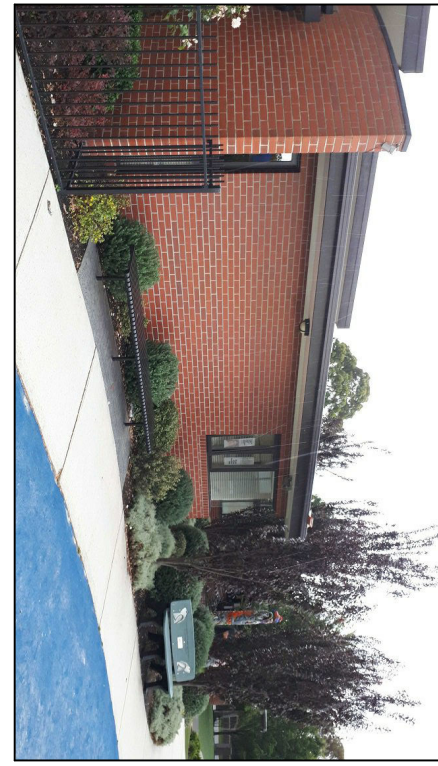


PHOTO 1 - FOOTPATH ALONGSIDE ADMINISTRATION BUILDING



PHOTO 3 -BITUMEN RUNNING TRACK



PHOTO 4 - LOOKING SOUTHEAST TOWARDS CLASSROOMS

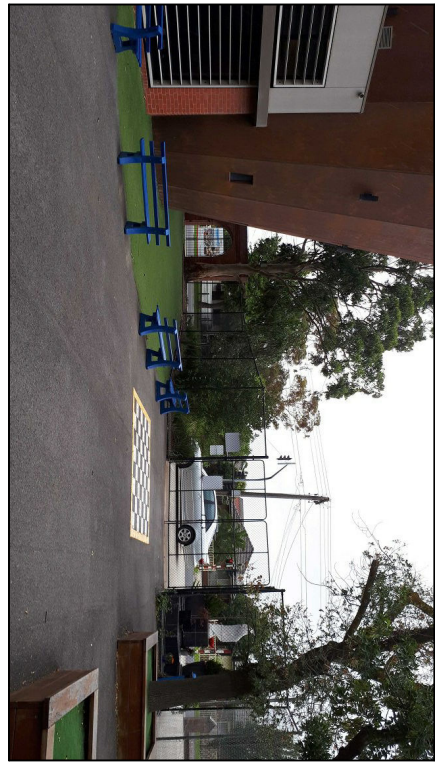


PHOTO 5 - LOOKING NORTHEAST TOWARDS MONASH STREET

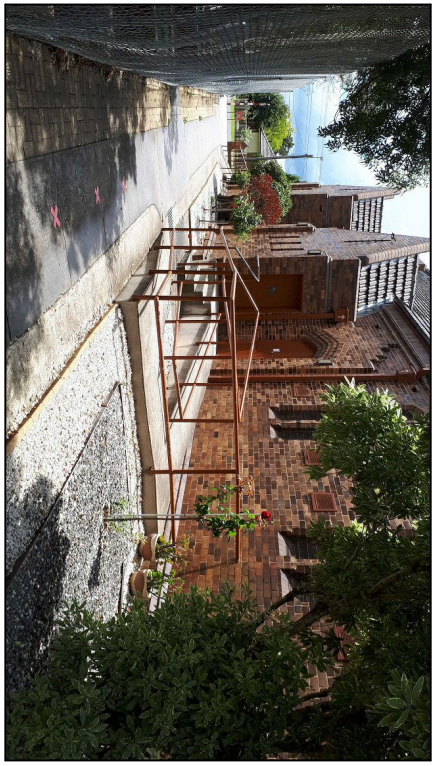


PHOTO 6 - WESTERN ELEVATION OF CHURCH BUILDING