

MENTONE GRAMMAR SCHOOL NEW BAYVIEW BUILDING & CARPARK STRUCTURE, AND LANDSCAPE CONSTRUCTION WORKS

75-77 Naples Road, 33-35 Warrigal Road, 37 Warrigal Road,
Mentone, Victoria, 3194, Australia.

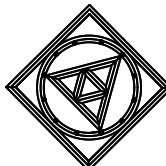
LANDSCAPE DRAWING SCHEDULE:

L00	DRAWING SCHEDULE
CARPARK GARDEN ON NAPLES ROAD:	
L01A	LANDSCAPE & PLANTING PLAN CARPARK GARDEN & RAINGARDEN NAPLES ROAD FRONTAGE 1:100
LOWER GROUND LEVEL NAPLES ROAD:	
L02	LANDSCAPE & PLANTING PLAN, LOWER GROUND LEVEL SOUTH, NAPLES ROAD FRONTAGE 1:100
L03A	LANDSCAPE & PLANTING PLAN, LOWER GROUND LEVEL NORTH, NAPLES ROAD FRONTAGE 1:100
L04	DETAILS
GROUND LEVEL NAPLES ROAD TO WARRIGAL ROAD:	
L05C	LANDSCAPE SITE PLAN, GROUND LEVEL, WARRIGAL ROAD FRONTAGE 1:250
L06A	LANDSCAPE SITE PLAN, GROUND LEVEL, WARRIGAL ROAD FRONTAGE 1:100
L07A	LANDSCAPE SITE PLAN, GROUND LEVEL, WARRIGAL ROAD FRONTAGE 1:100-THE FORUM TERRACE
L08	LANDSCAPE SITE PLAN, GROUND LEVEL ENTRY, WARRIGAL ROAD FRONTAGE 1:50
L09B	LANDSCAPE SITE PLAN, GROUND LEVEL EASTERN COURTYARD, WARRIGAL ROAD FRONTAGE 1:50
L10	STAIRS & CONCRETE SEATING DETAILS GROUND LEVEL, SPORTS TERRACE, SPORTS FIELD, FORUM TERRACE
ROOF GARDENS ON LEVEL 01 & LEVEL 02:	
L011A	LANDSCAPE SITE PLAN, ROOF GARDEN-LEVEL 01 & LEVEL 02 COMBINED 1:200
L012	LANDSCAPE SITE PLAN, LEVEL 01 ROOF GARDEN 1:50
L013	LANDSCAPE SITE PLAN, LEVEL 02 ROOF GARDEN, SOUTHERN SECTION 1:100
L014A	LANDSCAPE SITE PLAN, LEVEL 02 ROOF GARDEN, MIDDLE SECTION 1:100
L015	LANDSCAPE SITE PLAN, LEVEL 02 ROOF GARDEN, NORTH SECTION 1:50
L016A	LEVEL 01 & LEVEL 02 ROOF GARDEN DETAILS 01.
L017	PLANTING PLAN 1:150

ADVERTISED
PLAN

This copied document to be made available
for the sole purpose of enabling
its consideration and review as
part of a planning process under the
Planning and Environment Act 1987.
The document must not be used for any
purpose which may breach any
copyright

REVISION:
A 22.04.22 01A, 03A, 05A &16A
B 23.10.05 05C, 06A, 07A, 09B, 011A, 014A,
016A



CRAIG ELDRIDGE DESIGN
LANDSCAPE ARCHITECTURE
22 WALSH AVENUE, MOORABBIN, VICTORIA, 3189.
TEL:+61 (0)419 508 047
craig@cedesign.net.au

PROJECT
Mentone Grammar School,
New Bayview Building & Carpark
Naples Road, Mentone, Victoria.

TITLE
Landscape Drawing Schedule

SCALE
N.T.S.

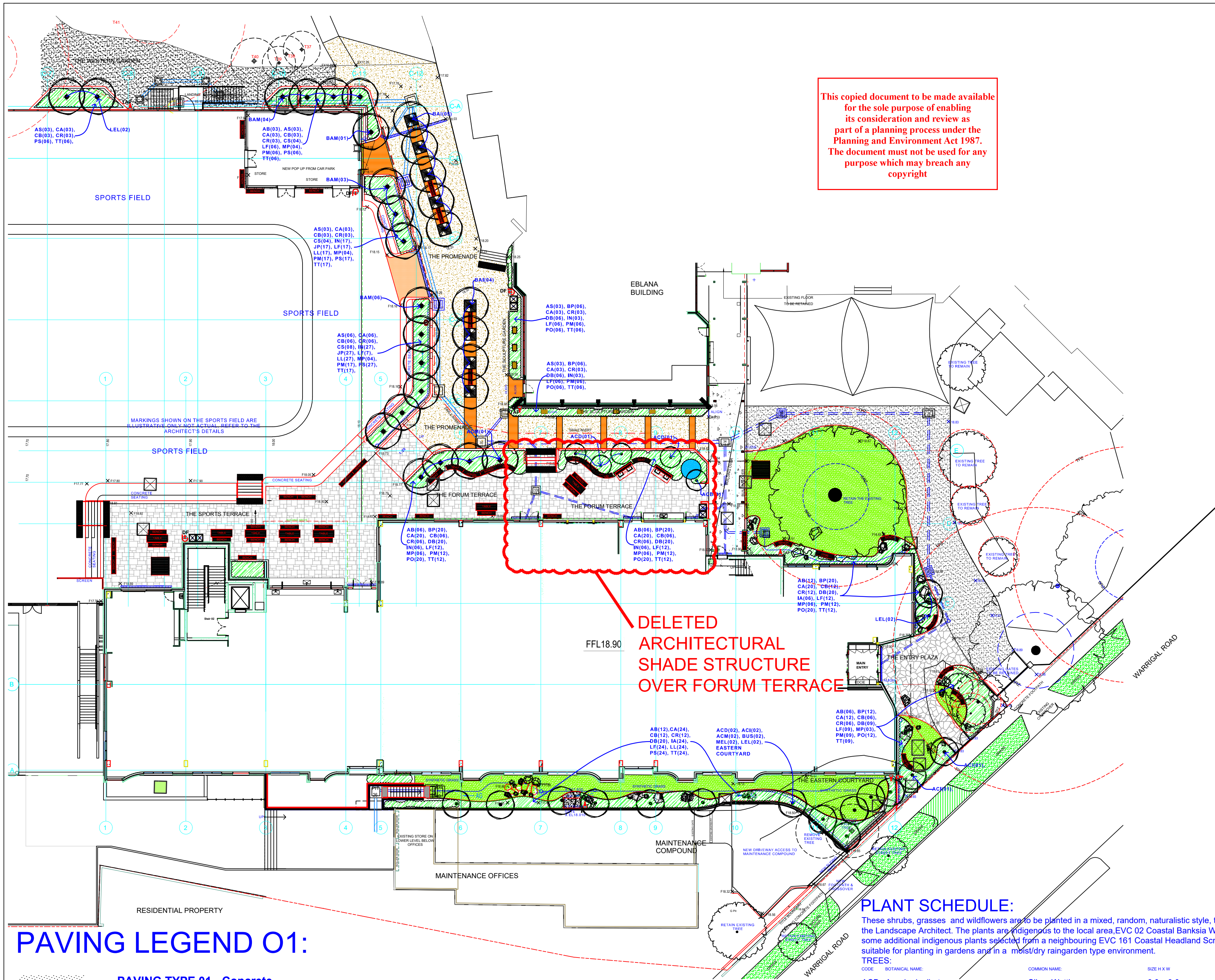
DATE
01.04.22

DRAWN
CE

DWG
L00B

DO NOT SCALE
COPYRIGHT

NOTE:
ALL PLANS MUST BE PRINTED AT A1
SIZE, IN FULL-COLOUR AT ALL TIMES



PAVING LEGEND 01:

- PAVING TYPE 01 - Concrete**
PLAIN-COLOURED REINFORCED CONCRETE SLAB, WITH PREMIUM QUALITY SURFACE FINISH, CONCRETE WITH RANDOM, DIAGONAL SAWCUTS. SLAB & CONSTRUCTION JOINTS TO ENGINEER'S DETAILS.
- PAVING TYPE 02 - Concrete**
REINFORCED CONCRETE SLAB, WITH OFF-WHITE CEMENT BASED EXPOSED SELECTED AGGREGATE MIX, SUPPLIED BY MENTONE PRE-MIX P/L., COLOUR "SUNSET". CONCRETE SLAB & CONSTRUCTION JOINTS TO ENGINEER'S DETAILS.
- PAVING TYPE 03 - Exposed Aggregate Concrete**
REINFORCED CONCRETE SLAB, WITH GREY CEMENT BASED EXPOSED SELECTED AGGREGATE MIX, SUPPLIED BY MENTONE PRE-MIX P/L., COLOUR "SUNRISE". CONCRETE SLAB & CONSTRUCTION JOINTS TO ENGINEER'S DETAILS.
- PAVING TYPE 04 - Pavers**
PAVERS INSTALLED ON A REINFORCED CONCRETE SLAB: PAVERS TO BE URBANSTONE P/L., "GOLDEN GUNMETAL" COLOUR, MILLED P4 SURFACE FINISH, 40mm THICK, LAID IN AN ASHLAR PATTERN (REFER TO DETAILS), LAID ON MORTAR TO . CONCRETE SLAB & CONSTRUCTION JOINTS TO ENGINEER'S DETAILS.
- PAVING TYPE 05 - Asphalt**
NEW ASPHALT SURFACE OVER THE EXISTING ASPHALT SURFACE, TO THE ENGINEER'S DETAILS.
- PAVING TYPE 06 - Porphyry Crazy Paving**
PAVING INSTALLED ON A REINFORCED CONCRETE SLAB: PAVERS TO BE SUPPLIED BY "PORPHYRY PLUS STONE P/L.", PORPHYRY STONE, 40-70mm THICK, LAID IN A RANDOM LAID PATTERN (CRAZY PAVING), COLOUR MIX 70% GREY PAVERS & 30% BROWN PAVERS, LAID ON MORTAR, WET-BEDDING METHOD TO THE SUPPLIER'S DETAILS. CONCRETE SLAB & CONSTRUCTION JOINTS TO THE ENGINEER'S DETAILS.

LEGEND 03:

- TGSI's**
TACTILE GROUND SURFACE INDICATORS, AS PER AS 1428.4.1, TO BE DTAC TACTILE CLASSIC STAINLESS STEEL, HAZARD 600X300X40+5 TO MANUFACTURERS INSTALLATION INSTRUCTIONS.
- FIRE HYDRANT**
THE EXISTING FIRE HYDRANT IS TO REMAIN IN THE LOCATION AT THE NORTH END OF THE SPORTS FIELD. MODIFY THE PIPEWORK & HYDRANT TO SUIT THE NEW GARDEN AND PAVING, ALL TO THE ENGINEER'S DETAILS & APPROVAL.
- BBQ**
SUPPLY AND INSTALL 2 x No., GRILLEX FRONTIER DOUBLE CABINET BARBEQUES WITH STAINLESS STEEL TOPS, INCLUDING LIFT-OFF LIDS. SECURELY FIX THE BARBEQUES TO THE CONCRETE SLAB & CONNECT THEM TO ELECTRICAL POWER, TO THE ENGINEER'S DETAILS.
- BOULDERS**
SUPPLY & INSTALL MUDSTONE BOULDERS TO GARDEN BEDS IN A VARIETY OF SIZES FROM 300-600mm LONG & WIDE, AND UP TO 900mm HIGH (AVERAGING 400-700mm HIGH). REFER TO DETAIL SHOWING SET-OUT. BOULDERS TO HAVE A MAIN COLOUR OF RED & PINK, WITH HIGHLIGHT COLOURS OF YELLOW, ORANGE & BROWN.

PLANT SCHEDULE:

These shrubs, grasses and wildflowers are to be planted in a mixed, random, naturalistic style, to the on-site direction of the Landscape Architect. The plants are indigenous to the local area EVC 02 Coastal Banksia Woodland zone, with some additional indigenous plants sourced from a neighbouring EVC 161 Coastal Headland Scrub zone, which are suitable for planting in gardens and in a moist/dry raingarden type environment.

TREES:					
CODE	BOTANICAL NAME	COMMON NAME	SIZE H X W	PURCHASE SIZE	QUANTITY
ACD	Acacia dealbata	Silver Wattle	6.0 x 3.0m	2.0m Tall	05
ACI	Acacia implexa	Lightwood	6.0 x 3.0m	2.0m Tall	04
ACM	Acacia melanoxylon	Blackwood	5.0 x 4.0m	2.0m Tall	03
BAI	Banksia integrifolia	Coastal Banksia	10.0x5.0m	2.0m Tall	09
BAM	Banksia marginata	Silver Banksia	6.0 x 3.0m	2.0m Tall	20
BUS	Bursaria spinosa	Sweet Bursaria	5.0 x 3.0m	2.0m Tall	05
MEL	Melaleuca lanceolata	Moohah	6.0 x 5.0m	2.0m Tall	02
LEL	Leptospermum laevis	Coastal Tea-tree	6.0 x 3.0m	2.0m Tall	09
SHRUBS & GRASSES:					
AB	Alyxia buxifolia	Sea Box	1.5 x 1.5m	140mm Pot	79
AS	Austrospira stipoides	Coast Spear Grass	1.0 x 1.0m	140mm Pot	28
BA	Brachyscome parvula	Coastal Daisy	0.2 x 0.3m	140mm Pot	84
CP	Chrysoccephalum apiculatum	Common Everlasting	0.5 x 1.0m	140mm Pot	150
CB	Correa alba	White Correa	1.0 x 1.0m	140mm Pot	72
CR	Correa reflexa	Common Correa	1.0 x 1.0m	140mm Pot	81
CS	Carpobrotus rossii	Karkalla	0.2 x 1.0m	140mm Pot	16
DB	Dianella brevicaulis	Small-flowered Flax-Lily	0.5 x 0.5m	140mm Pot	101
FN	Ficinia nodosa	Knobby Club Rush	0.5 x 0.5m	140mm Pot	09
IA	Indigofera australis	Austral Indigo	1.5 x 1.5m	140mm Pot	30
IN	Isolepis inundata	Swamp Club-Sedge	0.5 x 0.5m	140mm Pot	62
JP	Juncus pallidus	Pale Rush	0.7 x 0.7m	140mm Pot	44
LL	Lomandra longifolia	Spiny-headed Mat-rush	1.0 x 1.0m	140mm Pot	68
LF	Lomandra filiformis	Wattle Mat-rush	0.5 x 0.5m	140mm Pot	129
MP	Myoporum parvifolium	Creeping Boobialla (Fine-leaf)	0.2 x 1.0m	140mm Pot	33
PM	Poa morrisii	Velvet Tussock Grass	0.5 x 0.5m	140mm Pot	109
PO	Patersonia occidentalis	Purple Flag Iris	0.3 x 0.3m	140mm Pot	108
PS	Poa poliformis var. poliformis	Coastal Tussock-grass	1.0 x 1.0m	140mm Pot	107
TT	Themeda triandra	Kangaroo Grass	0.7 x 0.7m	140mm Pot	157

- NOTES:
- All plants shall be sourced from local Indigenous Plant nurseries. All plants shall be grown from locally collected seed and/or propagation materials (from the The Sandbelt & Eastern Coastal Region of Port Phillip).
 - All trees shall be purchased in the largest pot sizes and tallest heights available, with a minimum size of 2.0m required. All trees shall be installed with 2 x No. wooden tree stakes at heights at, or taller than, the respective tree heights.
 - If shrubs and groundcovers cannot be purchased in 140mm minimum diameter pots, then large-sized tubes, or 200mm diameter pots, may be substituted, to the approval of the Landscape architect.
 - The Viola hederacea shall be planted under the bench seats at the rate of 9-12 plants per bench. Additional VH shall be planted through the garden beds.

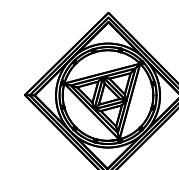
LEGEND 03:

- EXISTING TREES**
RETAIN THE EXISTING TREES & PROTECT THEM IN ACCORDANCE WITH THE ARBORIST'S RECOMMENDATIONS
- SYNTHETIC GRASSED AREAS**
SUPPLY & INSTALL SYNTHETIC GRASS MANUFACTURED BY SYNTURF P/L, FUSION, 40mm PILE, LAID ON A LAYER OF 50 OR 75mm CRUSHED ROCK, & GRASS TO BE FILLED WITH A 20-30mm LAYER OF SPECIALLY GRADED DRY SILICA SAND. INSTALL THE GRASS TO THE SUPPLIER'S RECOMMENDATIONS. ENSURE ALL PILE ON DIFFERENT ROLLS IS FACING THE SAME DIRECTION, AND ALL JOINTS ARE SECURELY TAPED. ALL EDGES TO BE SECURELY FIXED TO PREVENT LIFTING.
- RUBBER GRASS**
SYNTHETIC GRASS WITH POROUS RUBBER UNDERLAY. SUPPLY & INSTALL 75mm CRUSHED ROCK LAYER, POURED-IN-PLACE CRUMB IMPACT ABSORBING RUBBER 100mm THICK LAYER. GLUE THE GRASS TO THE SURFACE OF THE RUBBER. FILL THE GRASS WITH 10mm DEEP OF SILICA SAND.
- NEW GRAVELED WALKWAY**
SUPPLY & INSTALL GRAVELED AREA WITH 50mm DEEP OF BROWN DECOMPOSED GRANITIC SAND & 200mm DEEP OF CRUSHED ROCK BASE, WITH TIMBER EDGING. REFER TO THE ENGINEER'S DETAILS.
- NEW PLANTS**
SUPPLY & INSTALL NEW PLANTS. REFER TO THE PLANT SCHEDULE FOR SPECIES AND SIZES.
- DRINKING FOUNTAIN**
SUPPLY & INSTALL URBAN FOUNTAINS + FURNITURE APOLLO DFBF200, WATER BOTTLE REFILL FOUNTAINS WITH ADDITIONAL MAINTENANCE TAP, AND CONNECT TO MAINS WATER SUPPLY.
- WATER TAP**
EXTERNAL BRASS BIB COCK WATER TAP, WITH VANDAL-PROOF REMOVABLE HANDLE, AND COPPER PIPE VERTICAL CONNECTION, SECURELY FIXED TO WALL, OR, 90x45mm ACO H4 POST, 600-750mm ABOVE SURFACE LEVEL, AND CONNECT TO MAINS WATER SUPPLY.
- WASTE BIN**
DRAFFIN P/L 1200 SERIES POLISHED STAINLESS STEEL WHEELIE BIN ENCLOSURE, WITH CONVEX CANOPY, FIXED HORIZONTAL TO CONCRETE SLAB.
- RECYCLE BIN**
SUPPLY & INSTALL DRAFFIN P/L 1200 SERIES POLISHED STAINLESS STEEL WHEELIE BIN ENCLOSURE, WITH CONVEX CANOPY, FIXED HORIZONTAL TO CONCRETE SLAB.
- CONDUIT UNDER PAVING - INSTALL 90MM U.P.V.C.**
PIPE UNDER PAVING FOR INSTALLATION OF IRRIGATION SYSTEM. INCLUDE DRAW-ROPE LOOP INSIDE, CAPS AT BOTH ENDS TO PREVENT WATER ENTRY, AND PEGS TO INDICATION LOCATION.
- TREE GRATE - SUPPLY & INSTALL A TREE GRATE**
MANUFACTURED BY URBAN FOUNTAINS + FURNITURE, MODEL GR12x12TG, PATTERN TG4, 1.2X1.2M, TRAFFICABLE CLASS C, GALVANIZED, POWDER-COATED, ANTI-SLIP FINISH, & GALVANIZED ANGLED SUPPORT FRAME FIXED INTO CONCRETE SLAB TO THE MANUFACTURER'S & ENGINEER'S DETAILS. THIS IS A TYPICAL DETAIL FOR ALL TREE GRATES.
- BENCH SEATS 1800 LONG**
SUPPLY & INSTALL "LINEA" BENCHES, WITHOUT BACKS, LIB6, DDA, 1800mm(L), SUPPLIED BY STREET FURNITURE AUSTRALIA P/L, SURFACE FIXED WITH ANTI-THEFT BOLTS TO CONCRETE SLAB, INSTALLED HORIZONTAL, & TO THE MANUFACTURER'S INSTRUCTIONS, & DDA REQUIREMENTS. THIS IS A TYPICAL DETAIL FOR ALL FURNITURE.
- BENCH SEAT 1500 LONG**
SUPPLY & INSTALL "LINEA" BENCHES, WITHOUT BACKS, LIB6, DDA, 1500mm(L), SUPPLIED BY STREET FURNITURE AUSTRALIA P/L.
- SEAT 1800 LONG**
SUPPLY & INSTALL "LINEA" BENCHES, WITH ARMRESTS & BACK, LIS10, DDA, 1800mm(L), SUPPLIED BY STREET FURNITURE AUSTRALIA P/L.
- BENCH CURVED 1800 LONG**
SUPPLY & INSTALL "LINEA" CURVED BENCH, LIB6-C, DDA, 1800mm (L), SUPPLIED BY STREET FURNITURE AUSTRALIA P/L.
- SEAT CURVED 1800 LONG**
SUPPLY & INSTALL "LINEA" CURVED SEAT, WITH BACK & ARMS LIS10-C, DDA, 1800mm (L), SUPPLIED BY STREET FURNITURE AUSTRALIA P/L.
- TABLES 2100 LONG**
SUPPLY & INSTALL "LINEA" TABLES, LIS10, DDA, 2100mm (L), SUPPLIED BY STREET FURNITURE AUSTRALIA P/L.
- PLATFORM BENCHES**
SUPPLY & INSTALL "LINEA" PLATFORM, LIS9, DDA, 2100mm (L), SUPPLIED BY STREET FURNITURE AUSTRALIA P/L.
- STORMWATER DRAINAGE SYSTEM**
REFER TO THE CIVIL ENGINEER'S DETAILS

NOTE: ALL PLANS MUST BE PRINTED AT A1 SIZE, IN FULL-COLOUR AT ALL TIMES

- REVISION:
- A 22.04.22 Amend Plant Schedule
 - B 23 01 19 Remove Trees T37, T38, T39 & T40
 - C 23 09 13 Deleted the Architectural Shade Structure over the Forum Terrace

ADVERTISED PLAN



CRAIG ELDRIDGE DESIGN
LANDSCAPE ARCHITECTURE
22 WALSH AVENUE, MOORABBIN, VICTORIA, 3189.
TEL: +61 (0)419 508 047
craig@cedesign.net.au

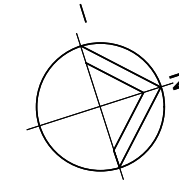
PROJECT
Mentone Grammar School,
New Bayview Building & Carpark
Naples Road, Mentone, Victoria.

TITLE
Landscape Ground Level Site
Plan & Planting Plan

SCALE
1:250@A1

DATE
01.04.22

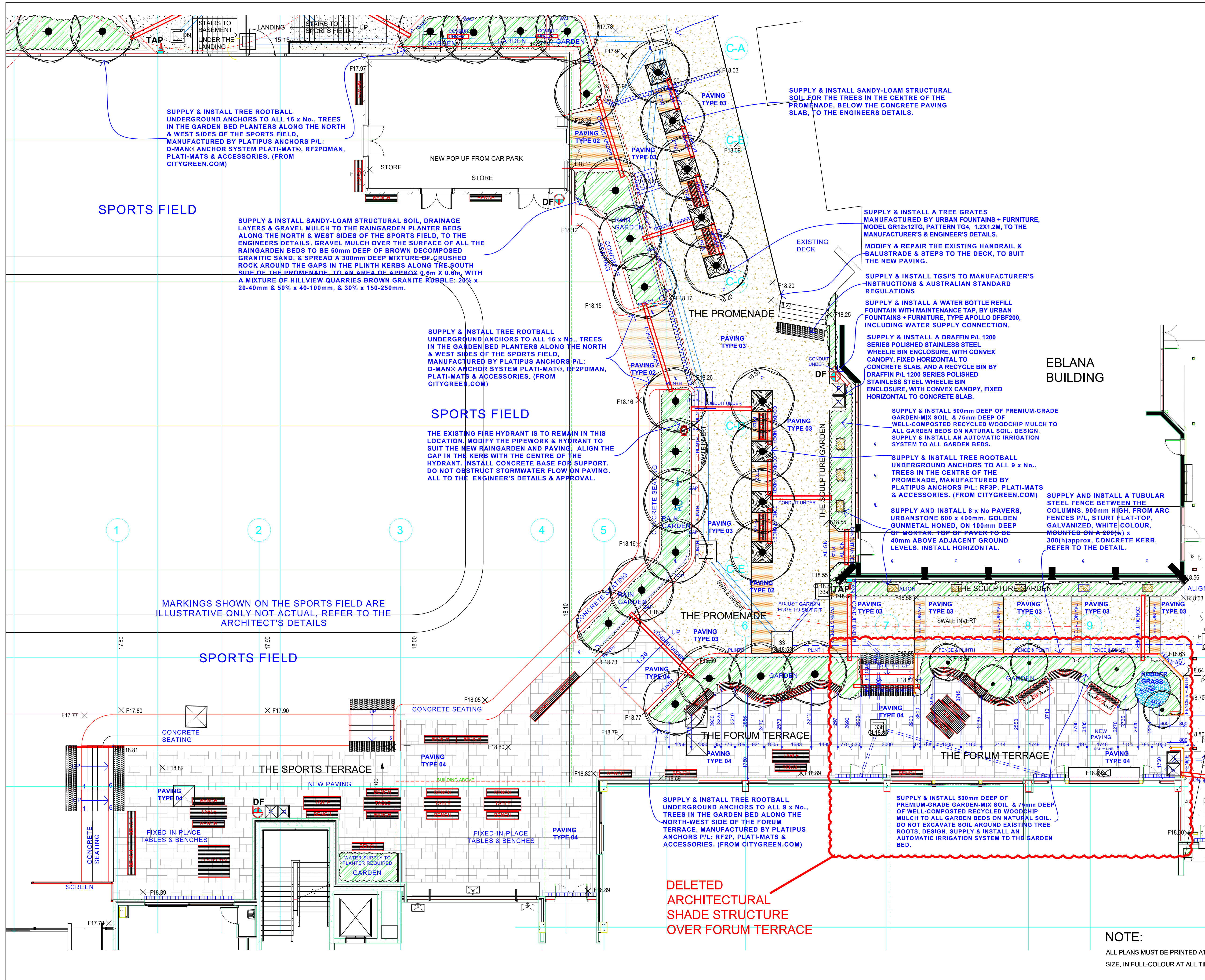
DRAWN
CE



DWG
L05C

DO NOT SCALE

COPYRIGHT



REVISION:
A 23 09 13 Deleted the Architectural Shade Structure over the Forum Terrace

This copied document to be made available for the sole purpose of enabling its consideration and review as part of a planning process under the Planning and Environment Act 1987. The document must not be used for any purpose which may breach any copyright

ADVERTISED PLAN


CRAIG ELDRIDGE DESIGN
LANDSCAPE ARCHITECTURE
22 WALSH AVENUE, MOORABBIN, VICTORIA, 3189.
TEL: +61 (0)419 508 047
craig@cedesign.net.au

PROJECT
Mentone Grammar School,
New Bayview Building & Carpark
Naples Road, Mentone, Victoria.

TITLE
Landscape Plan - Ground Level
The Promenade, The Forum
Terrace & The Sports Terrace.

SCALE
1:100@A1

DATE
01.04.22

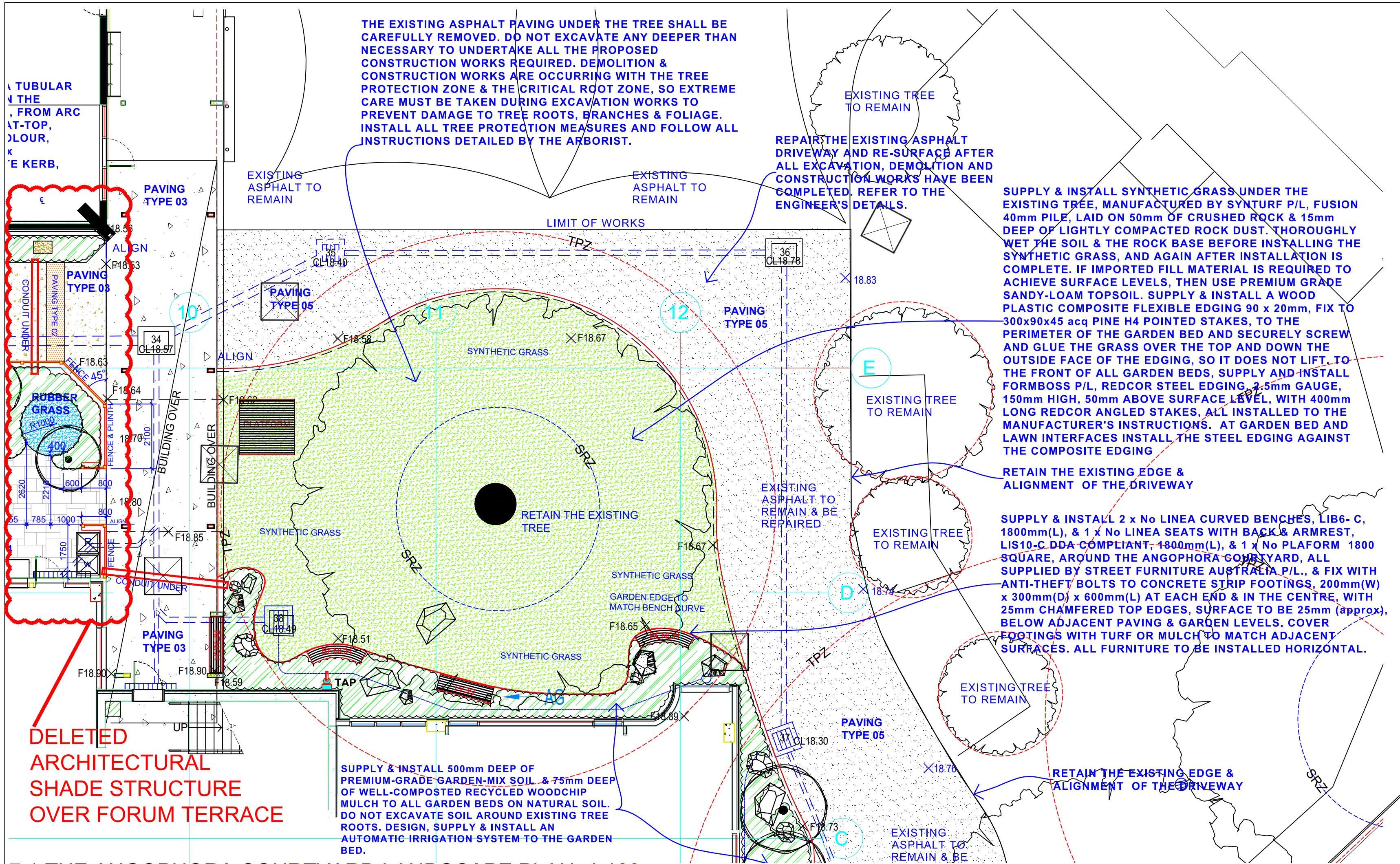
DRAWN
CE

DWG
L06A

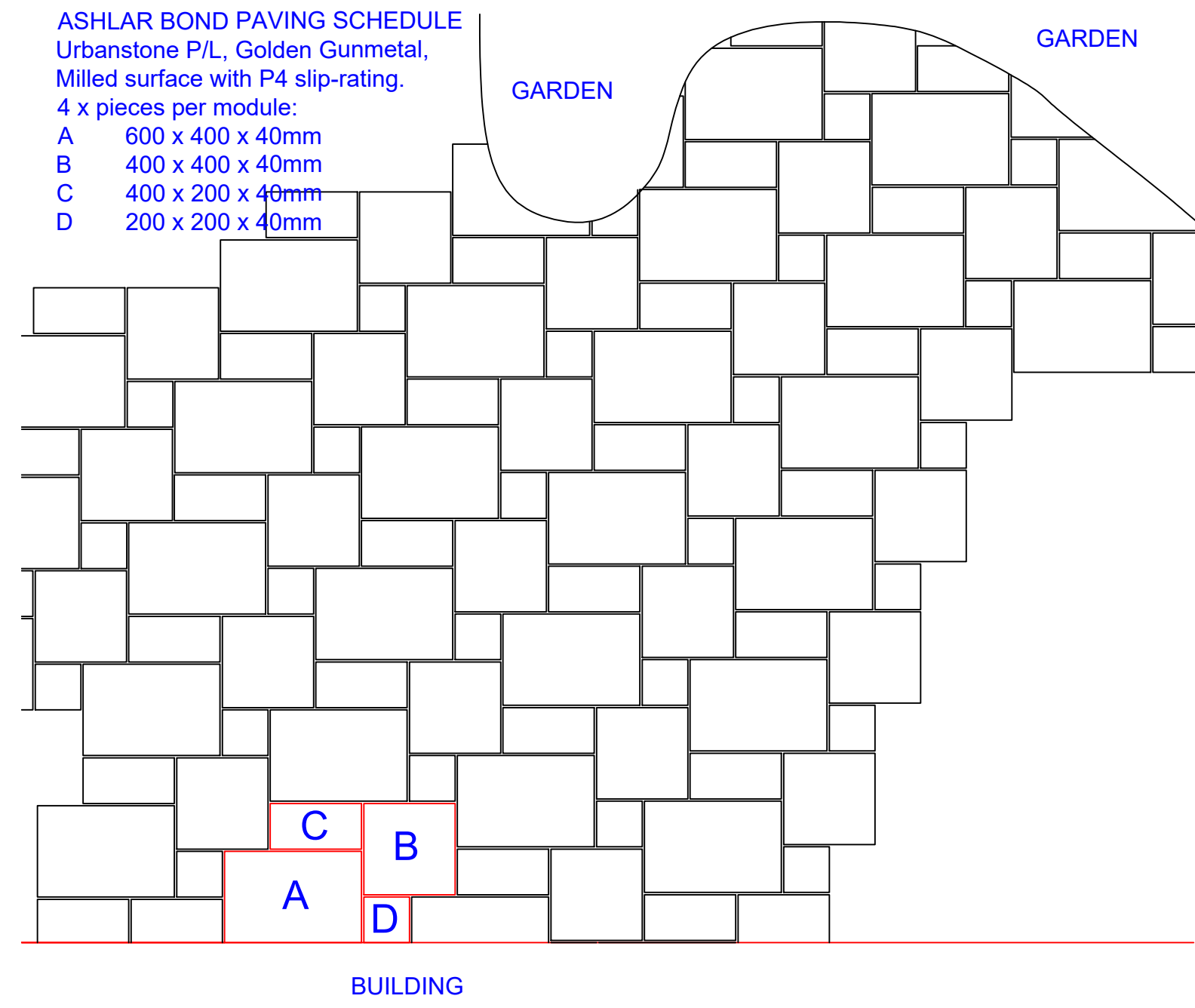
DO NOT SCALE

COPYRIGHT

NOTE:
ALL PLANS MUST BE PRINTED AT A1
SIZE, IN FULL-COLOUR AT ALL TIMES



7.1 THE ANGOPHORA COURTYARD LANDSCAPE PLAN 1:100



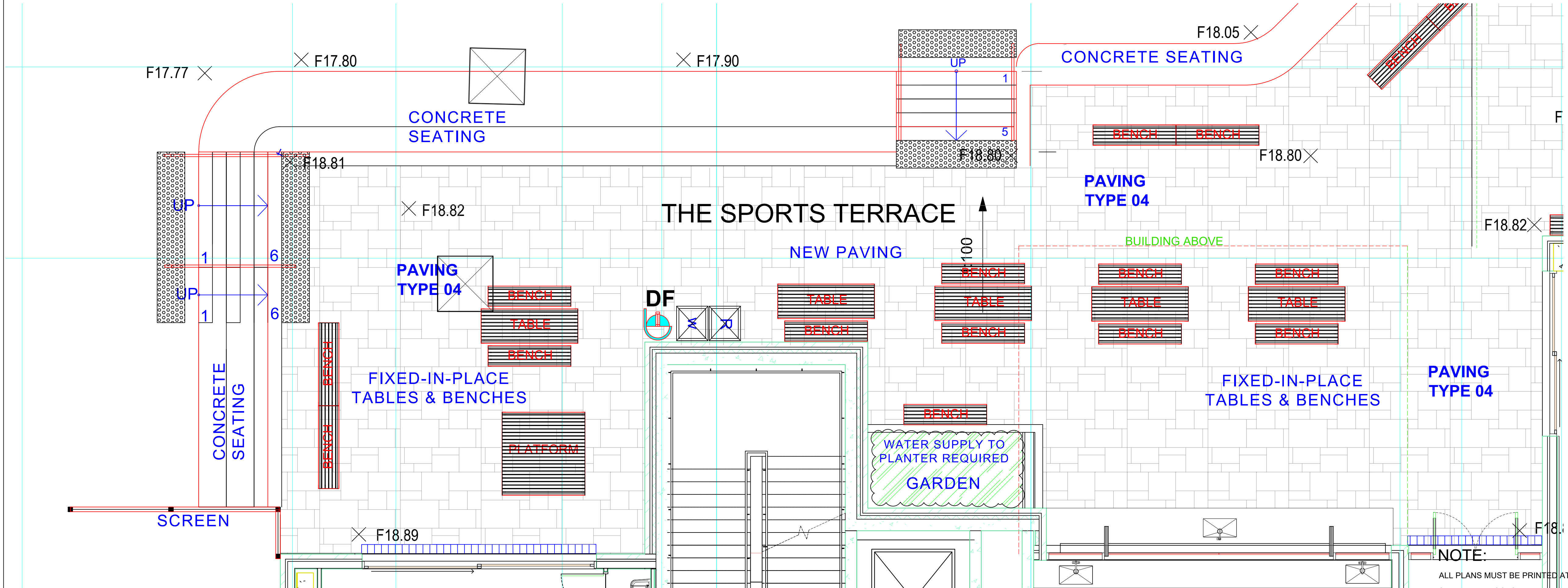
DETAIL OF ASHLAR PAVING PATTERN FOR THE SPORTS TERRACE & THE FORUM TERRACE 1:25

This copied document to be made available for the sole purpose of enabling its consideration and review as part of a planning process under the Planning and Environment Act 1987. The document must not be used for any purpose which may breach any copyright

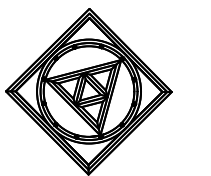
REVISION:
A 23 09 13 Deleted the Architectural Shade Structure over the Forum Terrace

NOTE:
ALL PLANS MUST BE PRINTED AT A1 SIZE, IN FULL-COLOUR AT ALL TIMES

ADVERTISED PLAN



7.2 THE SPORTS TERRACE LANDSCAPE PLAN 1:50



CRAIG ELDRIDGE DESIGN
LANDSCAPE ARCHITECTURE
22 WALSH AVENUE, MOORABBIN, VICTORIA, 3189.
TEL: +61 (0)419 508 047
craig@cedesign.net.au

PROJECT
Mentone Grammar School,
New Bayview Building & Carpark
Naples Road, Mentone, Victoria.

TITLE
Landscape Plan - Ground Level,
Sports Terrace & The
Angophora Terrace

SCALE DATE
1:100 & 1:50@A1 01.04.22


DRAWN DWG
CE L07A

DO NOT SCALE COPYRIGHT

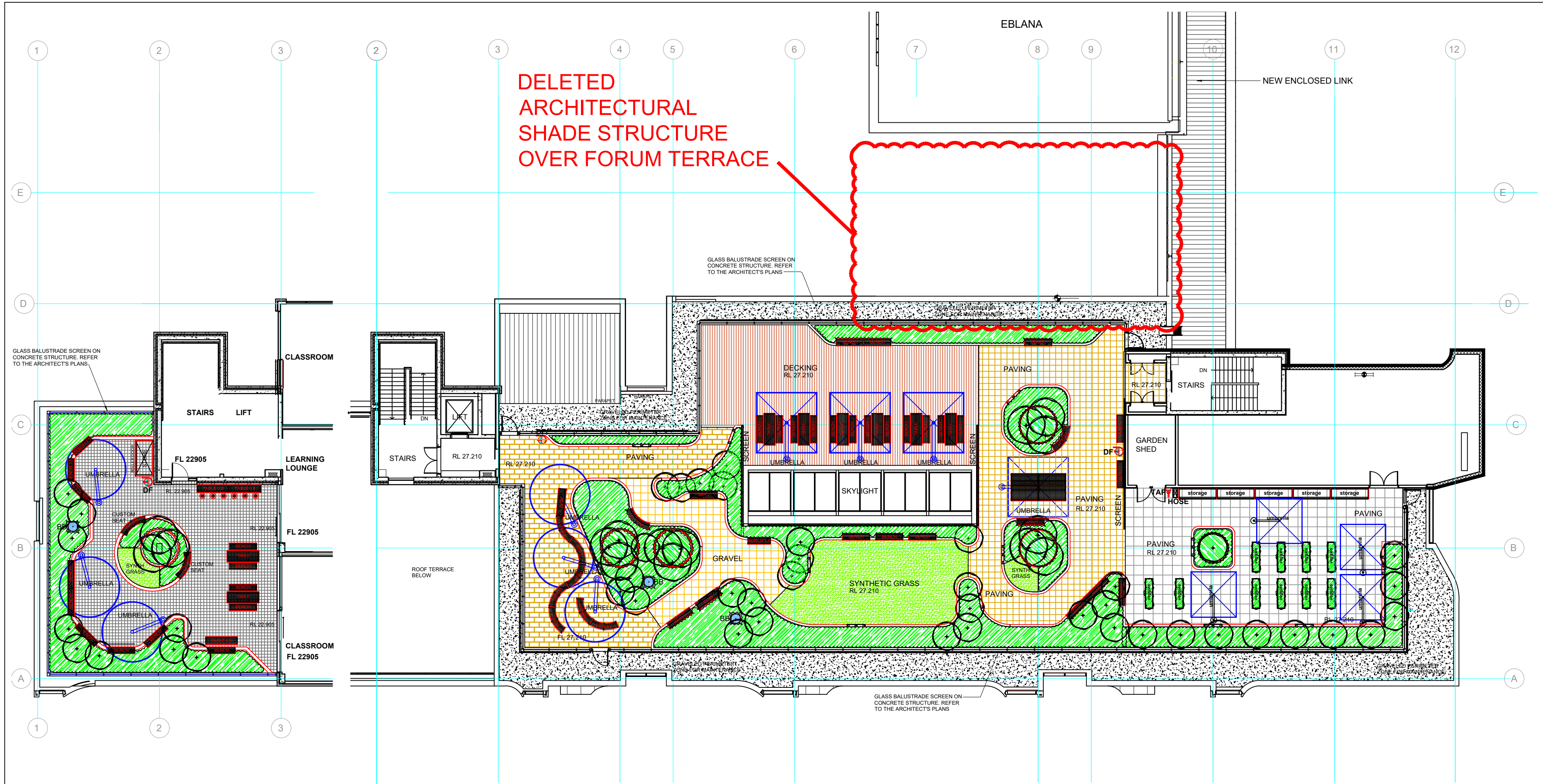
**This copied document to be made available
for the sole purpose of enabling
its consideration and review as
part of a planning process under the
Planning and Environment Act 1987.
The document must not be used for any
purpose which may breach any
copyright**



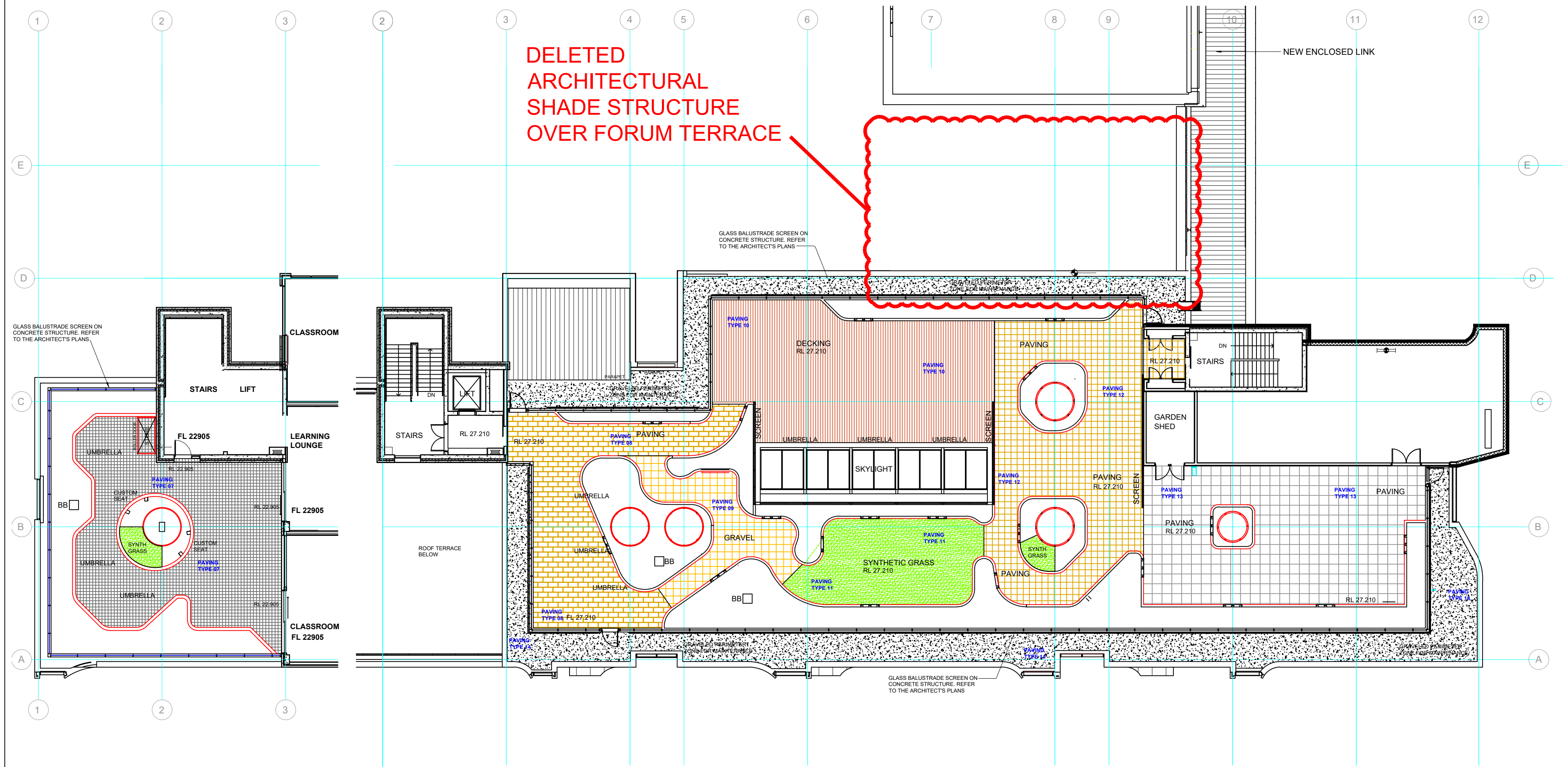
NOTE: ALL PLANS MUST BE PRINTED AT A1 SIZE, IN FULL-COLOUR AT ALL TIMES



DO NOT SCALE COPYRIGHT

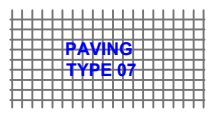


LEVEL 01 & LEVEL 02 ROOF GARDENS LANDSCAPE PLAN 1:200



LEVEL 01 & LEVEL 02 ROOF GARDENS PAVING PLAN 1:200

PAVING LEGEND O2:



PAVING TYPE 07 - Pavers
PAVERS INSTALLED ON A REINFORCED CONCRETE SLAB: PAVERS TO BE SUPPLIED BY URBANSTONE P/L., COMMERCIAL PAVERS, 40mm THICK, LAID IN A GRID PATTERN, COLOUR GOLDEN GUNMETAL, MILLED FINISH P4, 200 x 200mm, LAID ON MORTAR, ON A CONCRETE SLAB TO THE SUPPLIER'S INSTRUCTIONS & THE ARCHITECT'S & ENGINEER'S DETAILS. CONCRETE SLAB & CONSTRUCTION JOINTS TO THE ENGINEER'S DETAILS.



PAVING TYPE 08 - Pavers
PAVERS INSTALLED ON A REINFORCED CONCRETE SLAB: PAVERS TO BE SUPPLIED BY URBANSTONE P/L., COMMERCIAL PAVERS, 40mm THICK, LAID IN STRETCHER BOND PATTERN, COLOUR RIVER TOPAZ, MILLED FINISH P4, 600 x 400mm, LAID ON & SECURELY FIXED TO PLASTIC PAVING PEDESTALS, TO THE SUPPLIER'S & ENGINEER'S DETAILS. CONCRETE SLAB & CONSTRUCTION JOINTS TO THE ENGINEER'S DETAILS.



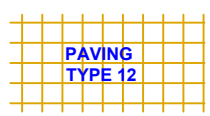
PAVING TYPE 09 - Pavers
PAVERS INSTALLED ON A REINFORCED CONCRETE SLAB: PAVERS TO BE SUPPLIED BY URBANSTONE P/L., COMMERCIAL PAVERS, 40mm THICK, LAID IN GRID PATTERN, COLOUR FLEECE, MILLED FINISH P4, 400 x 400mm, LAID ON & SECURELY FIXED TO PLASTIC PAVING PEDESTALS, TO THE SUPPLIER'S & ENGINEER'S DETAILS. CONCRETE SLAB & CONSTRUCTION JOINTS TO THE ENGINEER'S DETAILS.



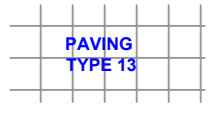
PAVING TYPE 10 - Composite Timber Boards
SUPPLY AND INSTALL COMPOSITE TIMBER BOARDS MANUFACTURED BY MODWOOD TECH P/L, 137 x 23mm BOARDS, NATURAL GRAIN, FLAME SHIELD COLOUR SAHARA, BRUSHED FINISH, SECRET FIXING METHOD, ON A TIMBER FRAME WITH JOISTS AT 300mm crs, (MAX 450mm crs), ON BEARERS, ON PLASTIC SUPPORT PEDESTALS, TO THE SUPPLIER'S INSTRUCTIONS & THE ENGINEER'S DETAILS & CONCRETE SLAB & CONSTRUCTION JOINTS TO THE ENGINEER'S DETAILS.



PAVING TYPE 11 - Synthetic Grass
SUPPLY AND INSTALL SYNTHETIC GRASS FIXED TO PANELS, SUPPORTED ON PLASTIC SUPPORT PEDESTALS. SYNTHETIC GRASS TO BE MANUFACTURED BY SYNTURF P/L, FUSION, 40mm PILE, SECURELY FIXED TO A LAYER OF GEOTEXTILE FABRIC, SECURELY FIXED TO TERRAGRATE FIBRE REINFORCED POLYMER PANELS: MINI-MESH, FM -MICRO 13x13/40x40x38mm, LIGHT GREY COLOUR, SECURELY FIXED TO PLASTIC SUPPORT PEDESTALS. GRASS TO BE FILLED WITH A 20-30mm LAYER OF SPECIALLY GRADED DRY SILICA SAND. INSTALL THE GRASS TO THE SUPPLIER'S RECOMMENDATIONS. ENSURE ALL PILE ON DIFFERENT ROLLS IS FACING THE SAME DIRECTION, AND ALL JOINTS ARE SECURELY GLUED/TAPED. ALL EDGES TO BE SECURELY FIXED TO PREVENT LIFTING.



PAVING TYPE 12 - Pavers
PAVERS INSTALLED ON A REINFORCED CONCRETE SLAB: PAVERS TO BE SUPPLIED BY URBANSTONE P/L., COMMERCIAL PAVERS, 40mm THICK, LAID IN STRETCHER BOND PATTERN, COLOUR ALBANY BEIGE, MILLED FINISH P4, 400 x 400mm, LAID ON & SECURELY FIXED TO PLASTIC PAVING PEDESTALS, TO THE SUPPLIER'S & ENGINEER'S DETAILS. CONCRETE SLAB & CONSTRUCTION JOINTS TO THE ENGINEER'S DETAILS.



PAVING TYPE 13 - Pavers
PAVERS INSTALLED ON A REINFORCED CONCRETE SLAB: PAVERS TO BE SUPPLIED BY URBANSTONE P/L., COMMERCIAL PAVERS, 40mm THICK, LAID IN A GRID PATTERN, COLOUR IVORY, MILLED FINISH P4, 600 x 600mm, LAID ON & SECURELY FIXED TO PLASTIC PAVING PEDESTALS, TO THE SUPPLIER'S & ENGINEER'S DETAILS. CONCRETE SLAB & CONSTRUCTION JOINTS TO THE ENGINEER'S DETAILS.

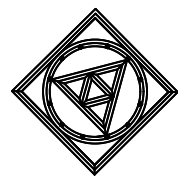


PAVING TYPE 14 - Roof Garden Gravel
SUPPLY & INSTALL 60-90mm DEEP OF TOSCANO 14mm CRUSHED ROCK WITHOUT FINES, (TO THE ARCHITECT'S LEVELS & DETAILS), TO THE PERIMETER OF THE ROOF GARDEN, BETWEEN THE GLASS FENCING AND THE OUTER PARAPET WALLS.

REVISION:
A 23 09 13 Deleted the Architectural Shade Structure over the Forum Terrace

ADVERTISED PLAN

This copied document to be made available for the sole purpose of enabling its consideration and review as part of a planning process under the Planning and Environment Act 1987. The document must not be used for any purpose which may breach any copyright



CRAIG ELDRIDGE DESIGN
LANDSCAPE ARCHITECTURE
22 WALSH AVENUE, MOORABBIN, VICTORIA, 3189.
TEL: +61 (0)419 508 047
craig@cedesign.net.au

PROJECT
Mentone Grammar School,
New Bayview Building & Carpark
Naples Road, Mentone, Victoria.

TITLE
Landscape Site Plan
Roof Garden - Level 01 & 02
Combined

SCALE
1:200@A1

DATE
01.04.22

DRAWN

CE

DWG

L011A

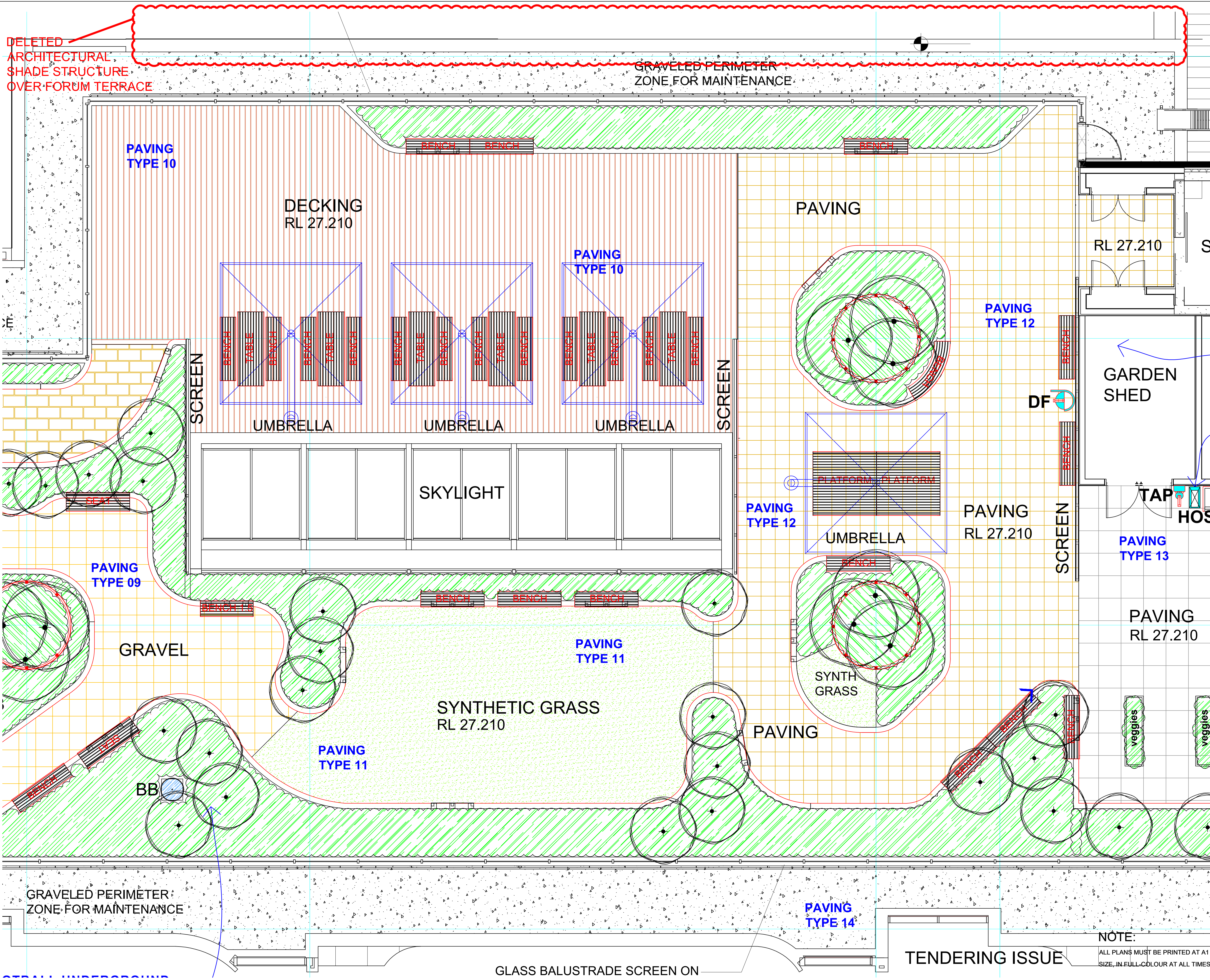
DO NOT SCALE

COPYRIGHT

TENDERING ISSUE

NOTE:

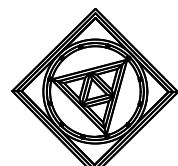
ALL PLANS MUST BE PRINTED AT A1
SIZE, IN FULL-COLOUR AT ALL TIMES



REVISION:
A 23 09 13 Deleted the Architectural Shade Structure over the Forum Terrace

This copied document to be made available for the sole purpose of enabling its consideration and review as part of a planning process under the Planning and Environment Act 1987. The document must not be used for any purpose which may breach any copyright

ADVERTISED PLAN



CRAIG ELDRIDGE DESIGN
LANDSCAPE ARCHITECTURE
22 WALSH AVENUE, MOORABBIN, VICTORIA, 3189.
TEL: +61 (0)419 508 047
craig@cedesign.net.au

PROJECT
Mentone Grammar School,
New Bayview Building & Carpark
Naples Road, Mentone, Victoria.

TITLE
Landscape Site Plan
Level 02 Roof Garden
Middle Section.

SCALE
1:100@A1
DATE
01.04.22

DRAWN
CE
DWG
L014A

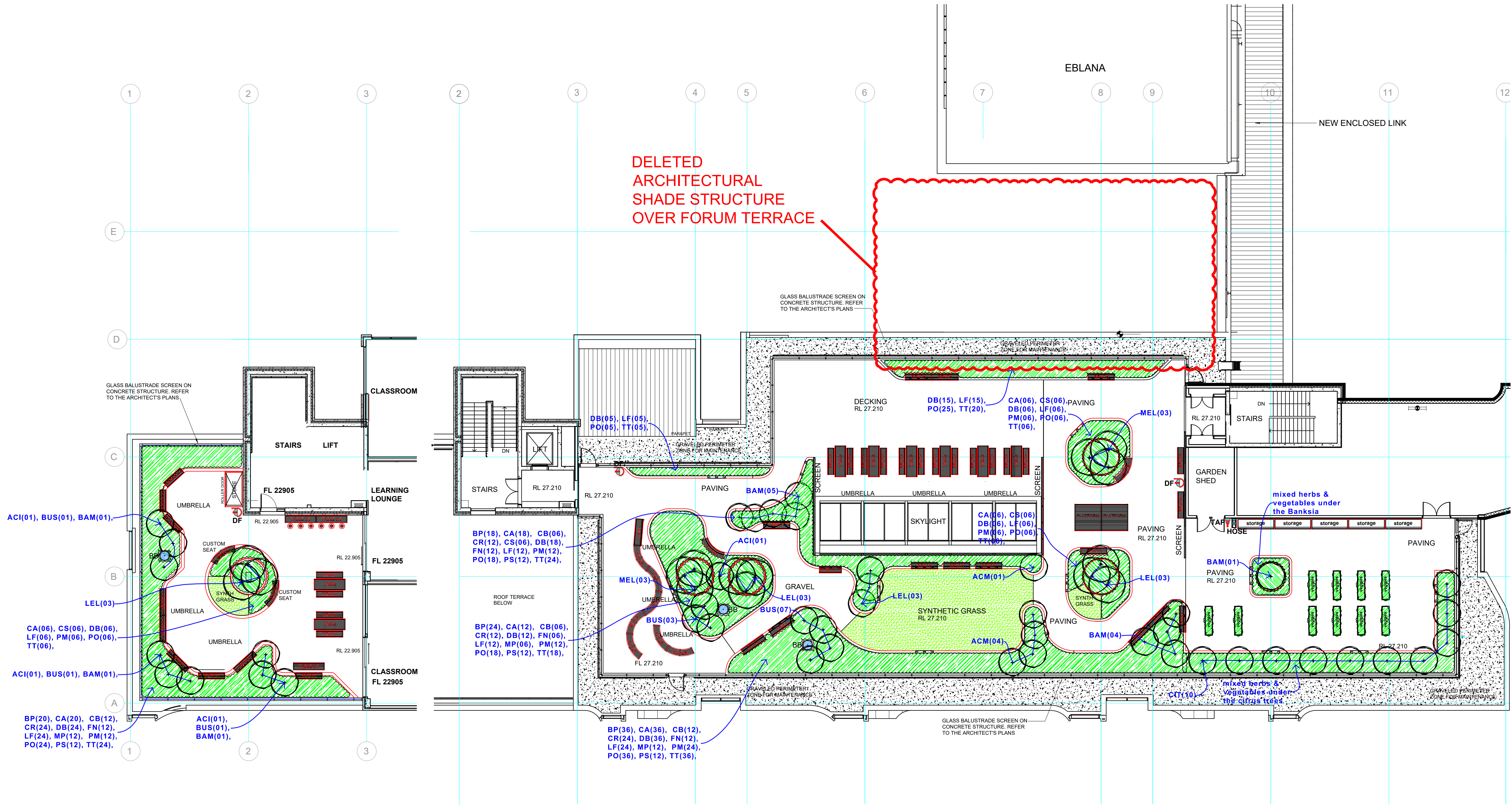
DO NOT SCALE
COPYRIGHT

NOTE:
ALL PLANS MUST BE PRINTED AT A1
SIZE, IN FULL-COLOUR AT ALL TIMES

TENDERING ISSUE

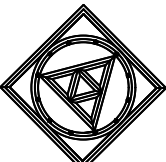
GLASS BALUSTRADE SCREEN ON

REVISION:
A 23 09 13 Deleted the Architectural Shade Structure over the Forum Terrace



This copied document to be made available for the sole purpose of enabling its consideration and review as part of a planning process under the Planning and Environment Act 1987. The document must not be used for any purpose which may breach any copyright

ADVERTISED PLAN



CRAIG ELDRIDGE DESIGN
LANDSCAPE ARCHITECTURE
22 WALSH AVENUE, MOORABBIN, VICTORIA, 3189.
TEL: +61 (0)419 508 047
craig@cedesign.net.au

PROJECT
Mentone Grammar School,
New Bayview Building & Carpark
Naples Road, Mentone, Victoria.

TITLE
Planting Plan
Level 01 & Level 02 Roof Garden

SCALE
1:150@A1
DATE
01.04.22

DRAWN
CE
DWG
L016A

DO NOT SCALE
COPYRIGHT

TENDERING ISSUE

NOTE: ALL PLANS MUST BE PRINTED AT A1 SIZE, IN FULL-COLOUR AT ALL TIMES