

This copied document to be made available for the sole purpose of enabling its consideration and review as part of a planning process under the Planning and Environment Act 1987. The document must not be used for any purpose which may breach any copyright



ADVERTISED PLAN

DISCLAIMER

This document may not be secure, may be corrupted in transmission or due to software incompatibility and/or may be amended or altered by third parties after leaving Gray Puksand's possession. Gray Puksand is not responsible for and accepts no liability for such matters. Subject only to any conflicting provision within any prior binding agreement by Gray Puksand (which agreement may also contain additional conditions relating to this document and its use).

1. The content of this document is confidential and copyright in it belongs to Gray Puksand. They are permitted only to be opened, read and used by the addressee.

2. All users of this document must carry out all relevant investigations and must examine, take advice as required and satisfy themselves concerning the contents, correctness and sufficiency of the attachment and its contents for their purposes.

3. To the extent permitted by law, all conditions and warranties concerning this document or any use to which they may be put (whether as to quality, outcome, fitness, care, skill or otherwise) whether express or implied by statute, common law, equity, trade, custom or usage or otherwise are expressly excluded.

4. Any person using or relying on this document releases indemnifies, and will keep indemnified, Gray Puksand against all claims, liabilities, loss, costs and expenses arising directly or indirectly out of or in connection with such use or reliance including without limitation any misrepresentation, error or defect in this document.

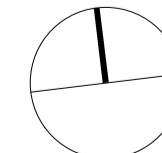
Contractors to use Architectural drawings for set out. Contractors to check & verify all Dimensions on Site prior to Construction/Fabrication. Figured Dimensions take precedence over Scaled Dimensions. Any Discrepancies should be immediately referred to the Architect. All work to comply with N.C.C. Statutory Authorities & Relevant Australian Standards.

ARB - ACT Barry Hackett #2911 ARB - QLD Nik Tabain #6412
 ARB - NSW Scott Moynan #7147 ARB - VIC CS2020



REV	DESCRIPTION	DATE
A	Department of Transport and Planning	24.03.2026

PROJECT NO 124125
 DRAWN KF
 CHECKED -
 AUTHORISED -



StorHub
 173-177 Barkly Avenue
 Burnley, Victoria, 3121

GRAY UKSAND

TOWN PLANNING

DEMOLITION PLAN

DWG # **TP111** REV **A**
 SCALE @ A1 1 : 200

This copied document to be made available for the sole purpose of enabling its consideration and review as part of a planning process under the Planning and Environment Act 1987. The document must not be used for any purpose which may breach any copyright

ADVERTISED PLAN



LEGEND
 - - - - - OUTLINE OF PREVIOUSLY APPROVED ENVELOPE (PLANNING PERMIT PLN20/0868 - 20 DECEMBER 2021)
 INFRASTRUCTURE FOR FUTURE EV CHARGING POINTS TO 20% OF CARPARKING SPACES WILL BE INCLUDED IN THE SERVICES DESIGN
GROUND FLOOR GFA - 1144M²

DISCLAIMER

This document may not be secure, may be corrupted in transmission or due to software incompatibility and/or may be amended or altered by third parties after leaving Gray Puksand's possession. Gray Puksand is not responsible for and accepts no liability for such matters. Subject only to any conflicting provision within any prior binding agreement by Gray Puksand (which agreement may also contain additional conditions relating to this document and its use).
 1. The content of this document is confidential and copyright in it belongs to Gray Puksand. They are permitted only to be opened, read and used by the addressee.
 2. All users of this document must carry out all relevant investigations and must examine, take advice as required and satisfy themselves concerning the contents, correctness and sufficiency of the attachment and its contents for their purposes.

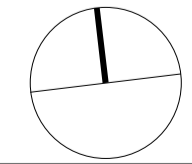
3. To the extent permitted by law, all conditions and warranties concerning this document or any use to which they may be put (whether as to quality, outcome, fitness, care, skill or otherwise) whether express or implied by statute, common law, equity, trade, custom or usage or otherwise are expressly excluded.
 4. Any person using or relying on this document releases indemnifies, and will keep indemnified, Gray Puksand against all claims, liabilities, loss, costs and expenses arising directly or indirectly out of or in connection with such use or reliance including without limitation any misrepresentation, error or defect in this document.
 Contractors to use Architectural drawings for set out. Contractors to check & verify all Dimensions on Site prior to Construction/Fabrication. Figured Dimensions take precedence over Scaled Dimensions. Any Discrepancies should be immediately referred to the Architect.
 All work to comply with N.C.C. Statutory Authorities & Relevant Australian Standards.
 ARB - ACT Barry Hackett #2911 ARB - QLD Nik Taban #6412
 ARB - NSW Scott Moynan #1147 ARB - VIC CS2020



REV	DESCRIPTION	DATE
A	Department of Transport and Planning	24.03.2025

PROJECT NO 124125
 DRAWN KF
 CHECKED -
 AUTHORISED -

StorHub
 173-177 Barkly Avenue
 Burnley, Victoria, 3121



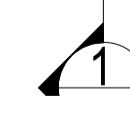
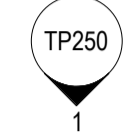
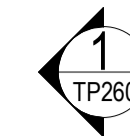
GRAY UKSAND

TOWN PLANNING

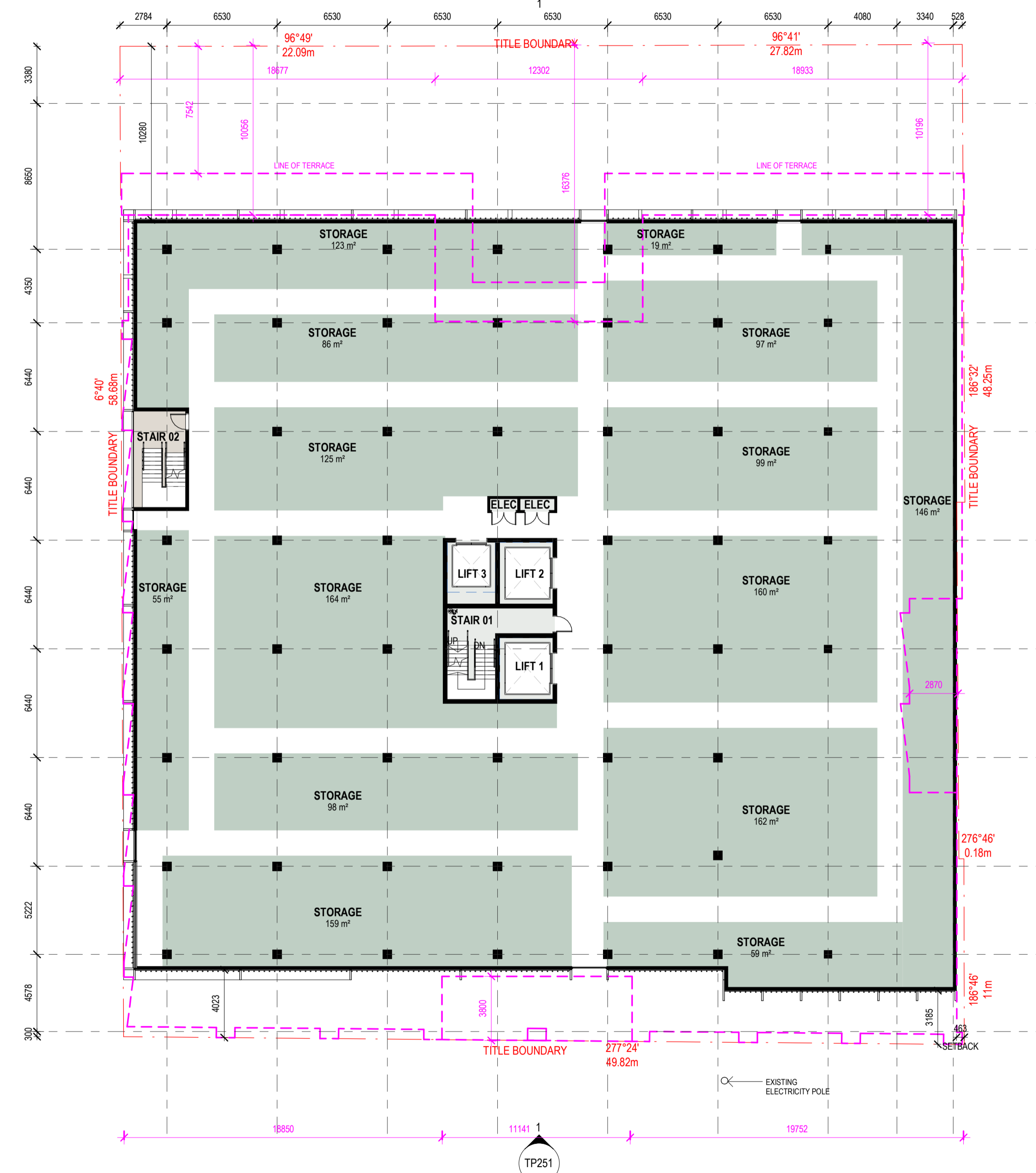
GROUND FLOOR GENERAL ARRANGEMENT PLAN

DWG # **TP212** REV **A**
 SCALE @ A1 1 : 200

Autodesk Docs://124125 - StorHub - Burnley/124125 - StorHub Burnley_C24.rvt



This copied document to be made available for the sole purpose of enabling its consideration and review as part of a planning process under the Planning and Environment Act 1987. The document must not be used for any purpose which may breach any copyright



ADVERTISED PLAN

LEGEND
 - - - - - OUTLINE OF PREVIOUSLY APPROVED ENVELOPE
 (PLANNING PERMIT PLN20/0868 - 20 DECEMBER 2021)

LEVEL 02 GFA - 2058M²

DISCLAIMER

This document may not be secure, may be corrupted in transmission or due to software incompatibility and/or may be amended or altered by third parties after leaving Gray Puksand's possession. Gray Puksand is not responsible for and accepts no liability for such matters. Subject only to any conflicting provision within any prior binding agreement by Gray Puksand (which agreement may also contain additional conditions relating to this document and its use).

1. The content of this document is confidential and copyright in it belongs to Gray Puksand. They are permitted only to be opened, read and used by the addressee.

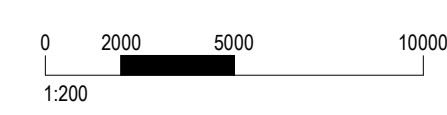
2. All users of this document must carry out all relevant investigations and must examine, take advice as required and satisfy themselves concerning the contents, correctness and sufficiency of the attachment and its contents for their purposes.

3. To the extent permitted by law, all conditions and warranties concerning this document or any use to which they may be put (whether as to quality, outcome, fitness, care, skill or otherwise) whether express or implied by statute, common law, equity, trade, custom or usage or otherwise are expressly excluded.

4. Any person using or relying on this document releases indemnifies, and will keep indemnified, Gray Puksand against all claims, liabilities, loss, costs and expenses arising directly or indirectly out of or in connection with such use or reliance including without limitation any misrepresentation, error or defect in this document.

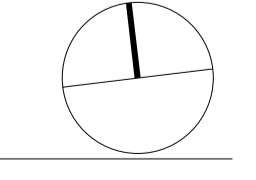
Contractors to use Architectural drawings for set out. Contractors to check & verify all Dimensions on Site prior to Construction/Fabrication. Figured Dimensions take precedence over Scaled Dimensions. Any Discrepancies should be immediately referred to the Architect. All work to comply with N.C.C. Statutory Authorities & Relevant Australian Standards.

ARB - ACT Barry Hackett #2911 ARB - QLD Nik Tabain #6412
 ARB - NSW Scott Moynan #7147 ARB - VIC CS2026



REV	DESCRIPTION	DATE
A	Department of Transport and Planning	24.03.2026

PROJECT NO 124125
 DRAWN KF
 CHECKED -
 AUTHORISED -



StorHub
 173-177 Barkly Avenue
 Burnley, Victoria, 3121

GRAY UKSAND

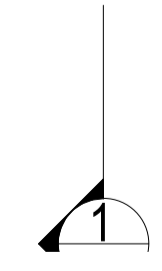
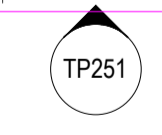
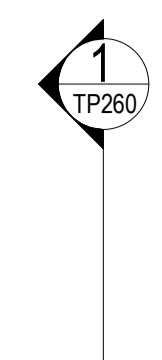
TOWN PLANNING

LEVEL 02 GENERAL ARRANGEMENT PLAN

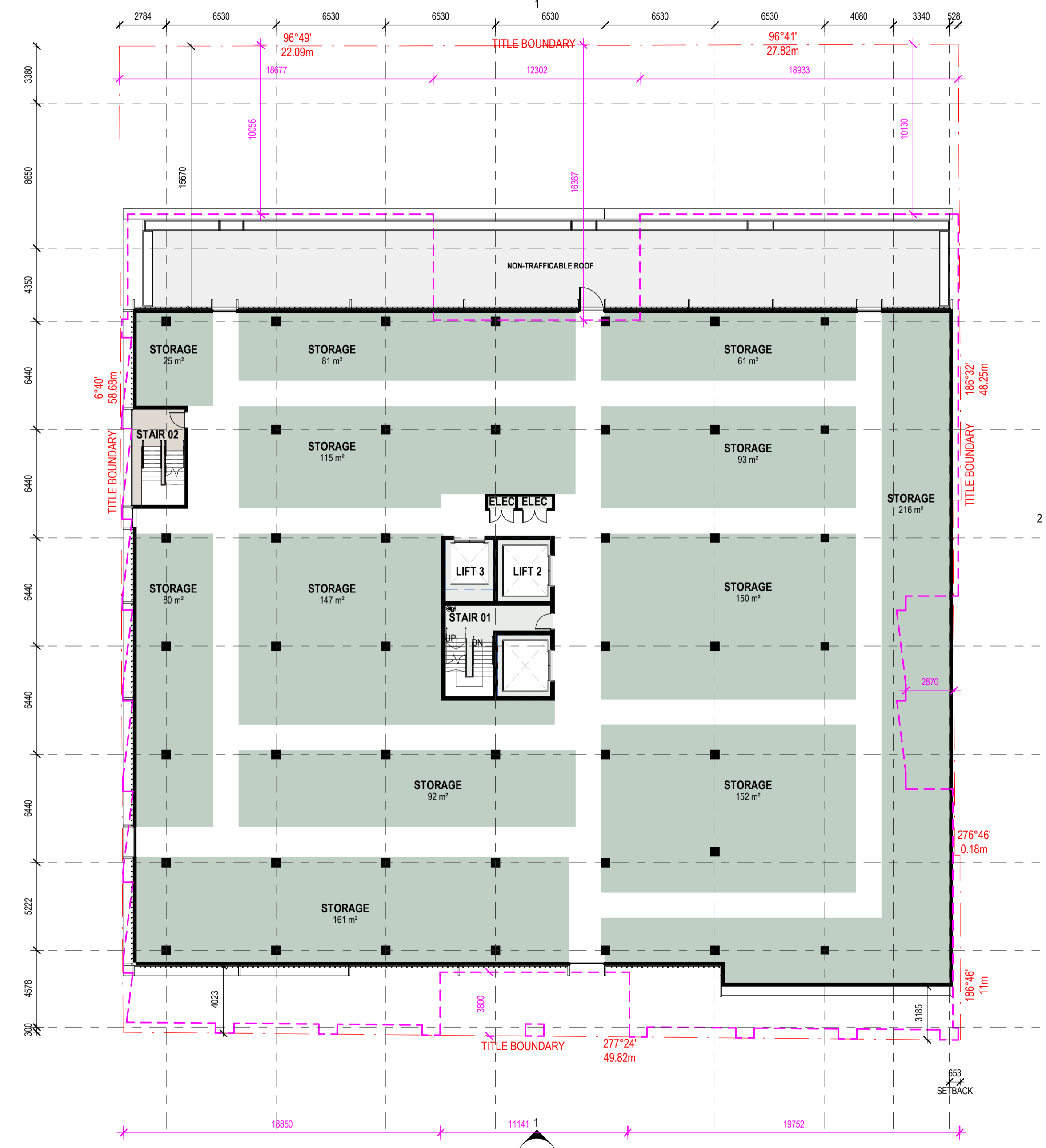
DWG # TP214 REV A
 SCALE @ A1 1 : 200

Autodesk Docs://124125 - StorHub - Burnley/124125 - StorHub Burnley_C24.rvt

Autodesk Docs://124125 - StorHub - Burnley/124125 - StorHub Burnley_C24.rvt



This copied document to be made available for the sole purpose of enabling its consideration and review as part of a planning process under the Planning and Environment Act 1987. The document must not be used for any purpose which may breach any copyright



ADVERTISED PLAN

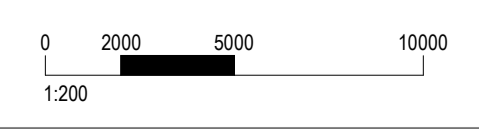
LEGEND
- - - - - OUTLINE OF PREVIOUSLY APPROVED ENVELOPE
(PLANNING PERMIT PLN20/0868 - 20 DECEMBER 2021)

LEVEL 04 GFA - 1797M²

DISCLAIMER

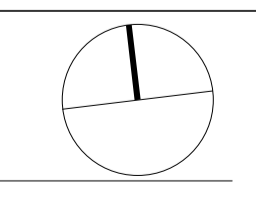
This document may not be secure, may be corrupted in transmission or due to software incompatibility and/or may be amended or altered by third parties after leaving Gray Puksand's possession. Gray Puksand is not responsible for and accepts no liability for such matters. Subject only to any conflicting provision within any prior binding agreement by Gray Puksand (which agreement may also contain additional conditions relating to the document and its use).
1. The content of this document is confidential and copyright in it belongs to Gray Puksand. They are permitted only to be opened, read and used by the addressee.
2. All users of this document must carry out all relevant investigations and must examine, take advice as required and satisfy themselves concerning the contents, correctness and sufficiency of the attachment and its contents for their purposes.

3. To the extent permitted by law, all conditions and warranties concerning this document or any use to which they may be put (whether as to quality, outcome, fitness, care, skill or otherwise) whether express or implied by statute, common law, equity, trade, custom or usage or otherwise are expressly excluded.
4. Any person using or relying on this document releases indemnifies, and will keep indemnified, Gray Puksand against all claims, liabilities, loss, costs and expenses arising directly or indirectly out of or in connection with such use or reliance including without limitation any misrepresentation, error or defect in this document.
Contractors to use Architectural drawings for set out.
Contractors to check & verify all Dimensions on Site prior to Construction/Fabrication. Figured Dimensions take precedence over Scaled Dimensions.
Any Discrepancies should be immediately referred to the Architect.
All work to comply with N.C.C. Statutory Authorities & Relevant Australian Standards.
ARB - ACT Barry Hackett #2911 ARB - QLD Nik Tabain #6412
ARB - NSW Scott Moynan #7147 ARB - VIC C32026



REV	DESCRIPTION	DATE
A	Department of Transport and Planning	24.03.2026

PROJECT NO	124125
DRAWN	KF
CHECKED	-
AUTHORISED	-



StorHub
173-177 Barkly Avenue
Burnley, Victoria, 3121

GRAY UKSAND

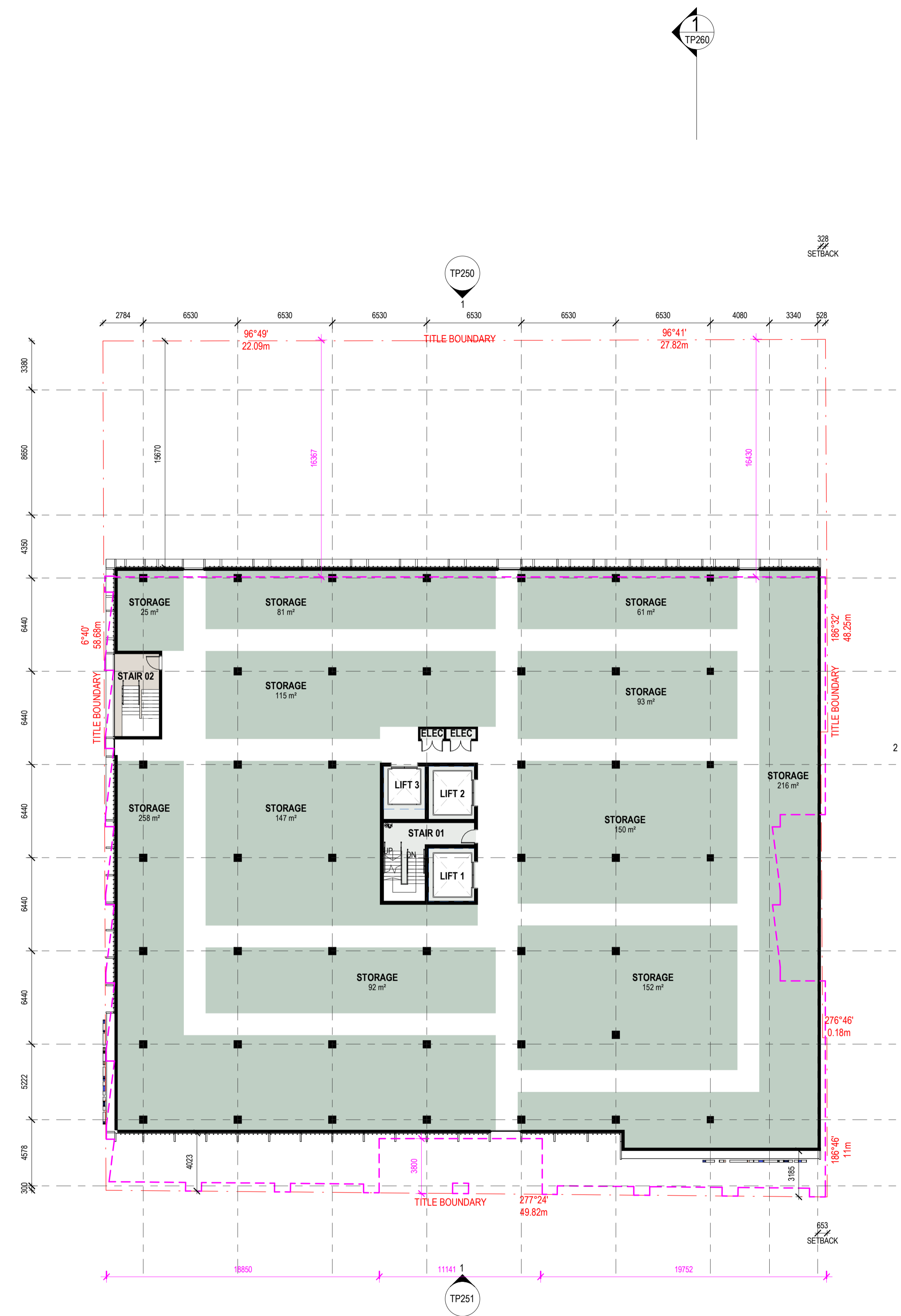
TOWN PLANNING

LEVEL 04 GENERAL ARRANGEMENT PLAN

DWG #	TP216	REV	A
SCALE @ A1	1 : 200		

Autodesk Docs://124125 - StorHub - Burnley/124125 - StorHub Burnley_C24.rvt

This copied document to be made available for the sole purpose of enabling its consideration and review as part of a planning process under the Planning and Environment Act 1987. The document must not be used for any purpose which may breach any copyright



ADVERTISED PLAN

LEGEND

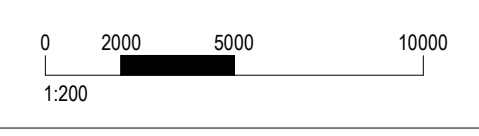
OUTLINE OF PREVIOUSLY APPROVED ENVELOPE
(PLANNING PERMIT PLN20/0868 - 20 DECEMBER 2021)

LEVEL 06 GFA - 1797M²

DISCLAIMER

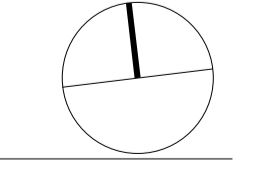
This document may not be secure, may be corrupted in transmission or due to software incompatibility and/or may be amended or altered by third parties after leaving Gray Pukсанд's possession. Gray Pukсанд is not responsible for and accepts no liability for such matters. Subject only to any conflicting provision within any prior binding agreement by Gray Pukсанд (which agreement may also contain additional conditions relating to the document and its use).
1. The content of this document is confidential and copyright in it belongs to Gray Pukсанд. They are permitted only to be opened, read and used by the addressee.
2. All users of this document must carry out all relevant investigations and must examine, take advice as required and satisfy themselves concerning the contents, correctness and sufficiency of the attachment and its contents for their purposes.

3. To the extent permitted by law, all conditions and warranties concerning this document or any use to which it may be put (whether as to quality, outcome, fitness, care, skill or otherwise) whether express or implied by statute, common law, equity, trade, custom or usage or otherwise are expressly excluded.
4. Any person using or relying on this document releases indemnifies, and will keep indemnified, Gray Pukсанд against all claims, liabilities, loss, costs and expenses arising directly or indirectly out of or in connection with such use or reliance including without limitation any misrepresentation, error or defect in this document.
Contractors to use Architectural drawings for set out.
Contractors to check & verify all Dimensions on Site prior to Construction/Fabrication. Figured Dimensions take precedence over Scaled Dimensions.
Any Discrepancies should be immediately referred to the Architect.
All work to comply with N.C.C. Statutory Authorities & Relevant Australian Standards.
ARB - ACT Barry Hackett #2911 ARB - QLD Nik Tablin #6412
ARB - NSW Scott Moynan #7147 ARB - VIC CS2026



REV	DESCRIPTION	DATE
A	Department of Transport and Planning	24.03.2026

PROJECT NO	124125
DRAWN	KF
CHECKED	-
AUTHORISED	-



StorHub
173-177 Barkly Avenue
Burnley, Victoria, 3121

GRAY PUKSAND

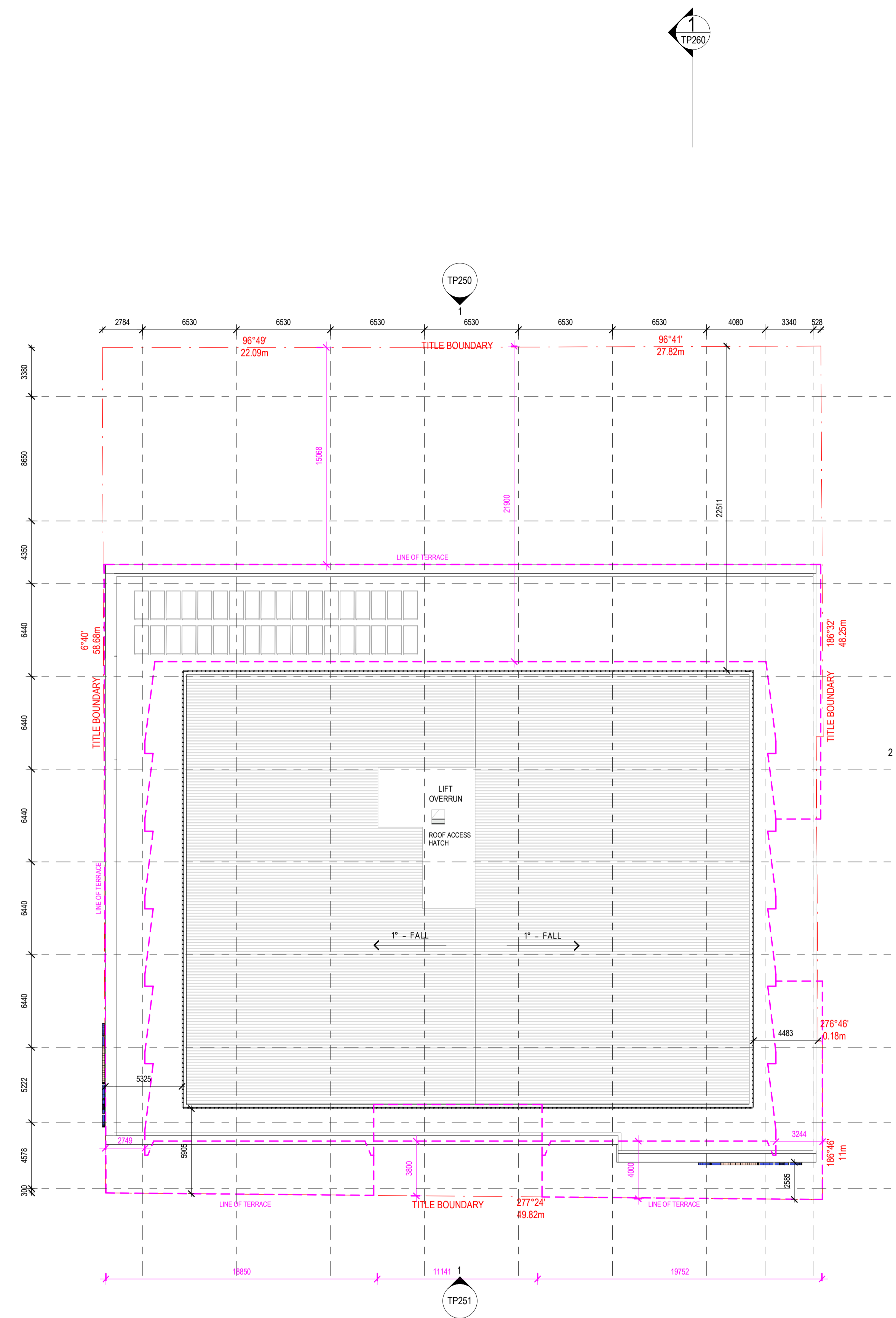
TOWN PLANNING

LEVEL 06 GENERAL ARRANGEMENT PLAN

DWG #	TP218	REV	A
SCALE @ A1	1 : 200		

Autodesk Docs://124125 - StorHub - Burnley/124125 - StorHub Burnley_C24.rvt

This copied document to be made available for the sole purpose of enabling its consideration and review as part of a planning process under the Planning and Environment Act 1987. The document must not be used for any purpose which may breach any copyright



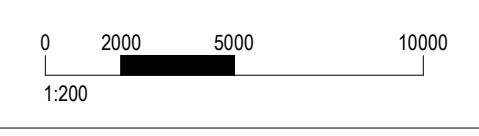
ADVERTISED PLAN

LEGEND
--- OUTLINE OF PREVIOUSLY APPROVED ENVELOPE
(PLANNING PERMIT PLN20/0868 - 20 DECEMBER 2021)

DISCLAIMER

This document may not be secure, may be corrupted in transmission or due to software incompatibility and/or may be amended or altered by third parties after leaving Gray Puksand's possession. Gray Puksand is not responsible for and accepts no liability for such matters. Subject only to any conflicting provision within any prior binding agreement with Gray Puksand (which agreement may also contain additional conditions relating to this document and its use).

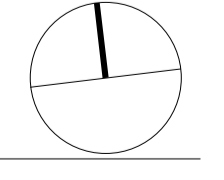
3. To the extent permitted by law, all conditions and warranties concerning this document or any use to which they may be put (whether as to quality, outcome, fitness, care, skill or otherwise) whether express or implied by statute, common law, equity, trade, custom or usage or otherwise are expressly excluded. 4. Any person using or relying on this document releases indemnifies, and will keep indemnified, Gray Puksand against all claims, liabilities, loss, costs and expenses arising directly or indirectly out of or in connection with such use or reliance including without limitation any misrepresentation, error or defect in this document. Contractors to use Architectural drawings for set out. Contractors to check & verify all Dimensions on Site prior to Construction/Fabrication. Figured Dimensions take precedence over Scaled Dimensions. Any Discrepancies should be immediately referred to the Architect. All work to comply with N.C.C. Statutory Authorities & Relevant Australian Standards.



REV	DESCRIPTION	DATE
A	Department of Transport and Planning	24.03.2026

PROJECT NO 124125
DRAWN KF
CHECKED -
AUTHORISED -

StorHub
173-177 Barkly Avenue
Burnley, Victoria, 3121



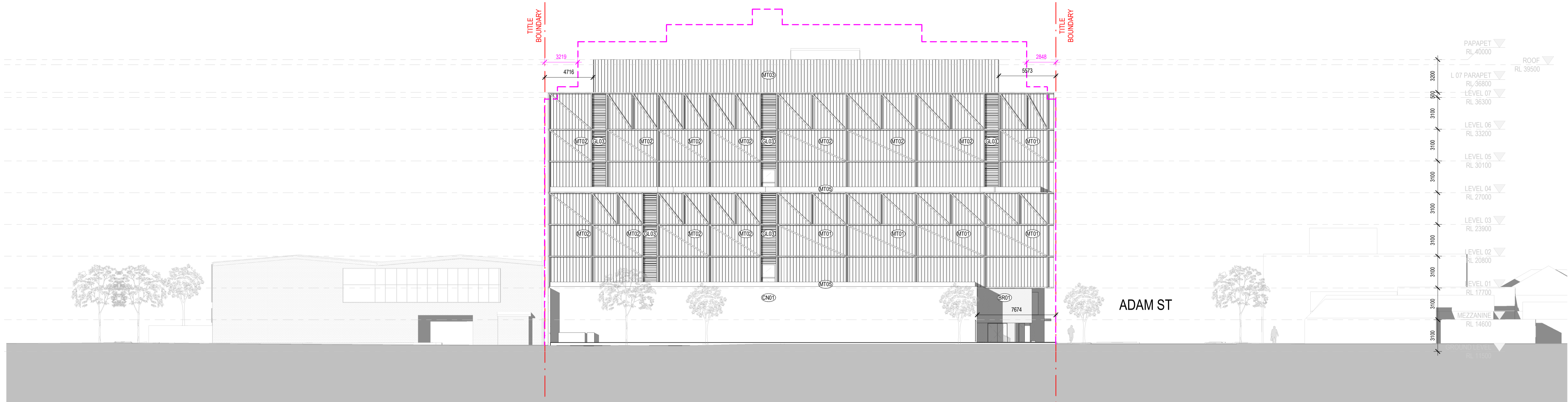
GRAY UKSAND

TOWN PLANNING

ROOF GENERAL ARRANGEMENT PLAN

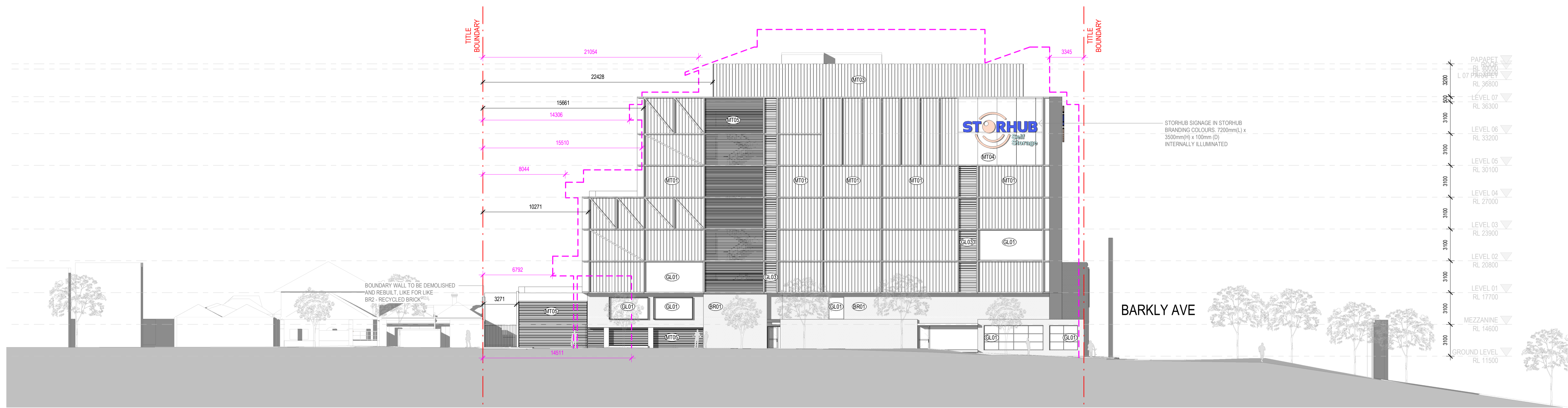
DWG # TP220 REV A
SCALE @ A1 1 : 200

This copied document to be made available for the sole purpose of enabling its consideration and review as part of a planning process under the Planning and Environment Act 1987. The document must not be used for any purpose which may breach any copyright



1 NORTH ELEVATION
SK09.00 1:200

ADVERTISED PLAN



2 WEST ELEVATION - ADAM STREET
TP212 1:200

LEGEND
--- OUTLINE OF PREVIOUSLY APPROVED ENVELOPE (PLANNING PERMIT PLN200868 - 20 DECEMBER 2021)

- FINISHES LEGEND**
- MT01 - LYSAGHT: SPANDEK LONGLINE 305 - "COLORBOND - DUSTY GALAH"
 - MT02 - LYSAGHT: SPANDEK LONGLINE 305 - "COLORBOND - DUSKY GLOW"
 - MT03 - LYSAGHT: SPANDEK LONGLINE 305 - "COLORBOND - MONUMENT"
 - MT04 - PIGMENTED FIBRE CEMENT: EQUITONE NATURA - "RED N359"
 - MT05 - ALUMINIUM & STEEL FRAMING ELEMENTS, SHROUDS, GLAZING SUITES IN "COLORBOND - MANOR RED"
 - CM01 - TEXTURED PRECAST CONCRETE, GREY
 - CM02 - TEXTURED PRECAST CONCRETE, PIGMENTED RED
 - GL01 - VISION GLAZING
 - GL02 - SPANDREL GLAZING
 - GL03 - GLAZED LOUVRES
 - BR01 - A MIXTURE OF RECYCLED & HERITAGE RED BRICKS

DISCLAIMER

This document may not be secure, may be corrupted in transmission or due to software incompatibility and/or may be amended or altered by third parties after leaving Gray Puksand's possession.

Gray Puksand is not responsible for and accepts no liability for such matters. Subject only to any conflicting provision within any prior binding agreement by Gray Puksand (which agreement may also contain additional conditions relating to this document and its use).

1. The content of this document is confidential and copyright in it belongs to Gray Puksand. They are permitted only to be opened, read and used by the addressee.

2. All users of this document must carry out all relevant investigations and must examine, take advice as required and satisfy themselves concerning the contents, correctness and sufficiency of the attachment and its contents for their purposes.

3. To the extent permitted by law, all conditions and warranties concerning this document or any use to which they may be put (whether as to quality, outcome, fitness, care, skill or otherwise) whether express or implied by statute, common law, equity, trade, custom or otherwise are expressly excluded.

4. Any person using or relying on this document releases indemnifies, and will keep indemnified, Gray Puksand against all claims, liabilities, losses, costs and expenses arising directly or indirectly out of or in connection with such use or reliance including without limitation any misrepresentation, error or defect in this document.

Contractors to use Architectural drawings for set out. Contractors to check & verify all Dimensions on Site prior to Construction/Fabrication. Figured Dimensions take precedence over Scaled Dimensions. Any Discrepancies should be immediately referred to the Architect. All work to comply with N.C.C. Statutory Authorities & Relevant Australian Standards.

ARB - ACT Barry Hackett #2911 ARB - QLD Nik Tabain #6412
ARB - NSW Scott Mojan #7147 ARB - VIC CS2020



REV	DESCRIPTION	DATE
A	Department of Transport and Planning	24.03.2026

PROJECT NO	124125
DRAWN	KF
CHECKED	-
AUTHORISED	-

StorHub

173-177 Barkly Avenue
Burnley, Victoria, 3121

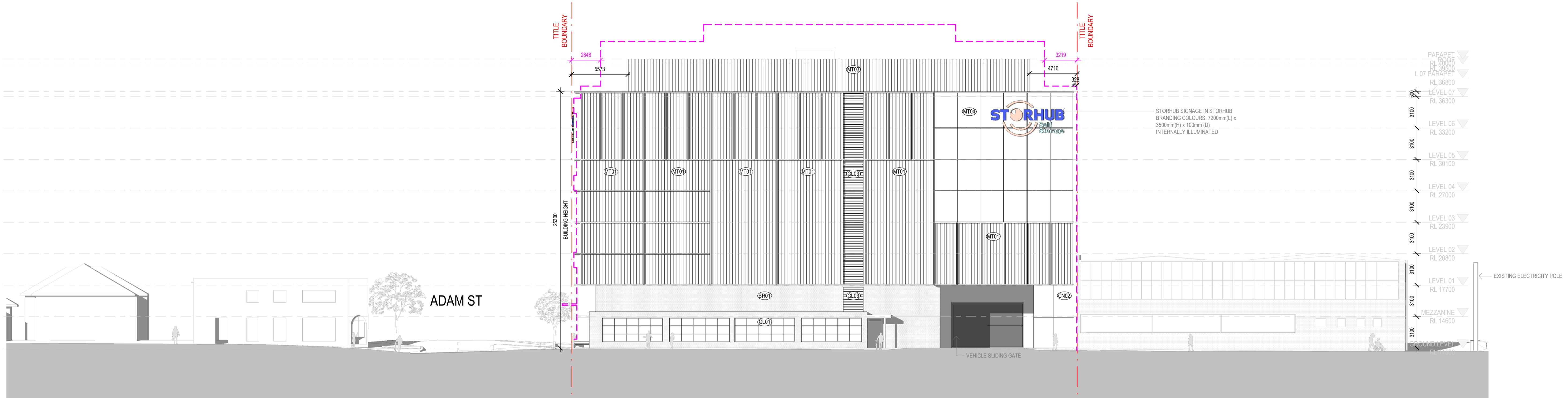
GRAY PUKSAND

TOWN PLANNING

NORTH & WEST ELEVATIONS

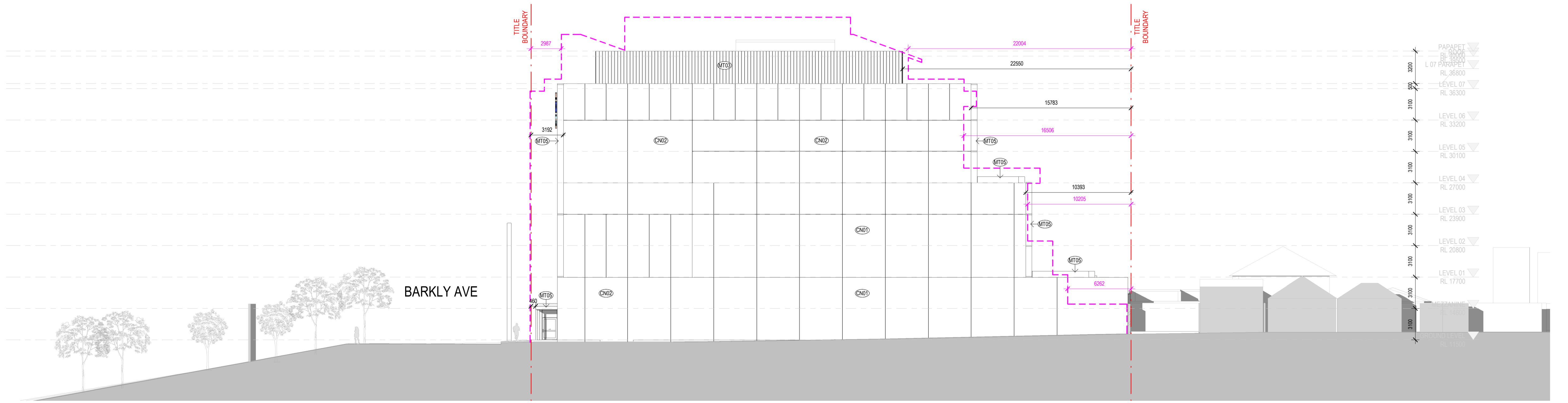
DWG #	TP250	REV	A
SCALE @ A1	1 : 200		

This copied document to be made available for the sole purpose of enabling its consideration and review as part of a planning process under the Planning and Environment Act 1987. The document must not be used for any purpose which may breach any copyright



1 SOUTH ELEVATION - BARKLY AVENUE
SK09.00 1:200

ADVERTISED PLAN



2 EAST ELEVATION
SK09.00 1:200

LEGEND
- - - - - OUTLINE OF PREVIOUSLY APPROVED ENVELOPE (PLANNING PERMIT PLN20/0868 - 20 DECEMBER 2021)

- FINISHES LEGEND**
- MT01 - LYSAGHT: SPANDEK LONGLINE 305 - "COLORBOND - DUSTY GALAH"
 - MT02 - LYSAGHT: SPANDEK LONGLINE 305 - "COLORBOND - DUSKY GLOW"
 - MT03 - LYSAGHT: SPANDEK LONGLINE 305 - "COLORBOND - MONUMENT"
 - MT04 - PIGMENTED FIBRE CEMENT: EQUITONE NATURA - "RED N359"
 - MT05 - ALUMINIUM & STEEL FRAMING ELEMENTS, SHROUDS, GLAZING SUITES IN "COLORBOND - MANOR RED"
 - CN01 - TEXTURED PRECAST CONCRETE, GREY
 - CN02 - TEXTURED PRECAST CONCRETE, PIGMENTED RED
 - GL01 - VISION GLAZING
 - GL02 - SPANDREL GLAZING
 - GL03 - GLAZED LOUVRES
 - BR01 - A MIXTURE OF RECYCLED & HERITAGE RED BRICKS

DISCLAIMER

This document may not be secure, may be corrupted in transmission or due to software incompatibility and/or may be amended or altered by third parties after leaving Gray Puksand's possession. Gray Puksand is not responsible for and accepts no liability for such matters. Subject only to any conflicting provision within any prior binding agreement by Gray Puksand (which agreement may also contain additional conditions relating to this document and its use).

1. The content of this document is confidential and copyright in it belongs to Gray Puksand. They are permitted only to be opened, read and used by the addressee.

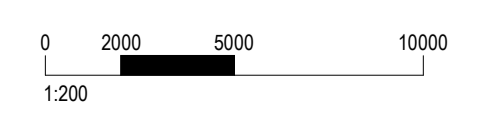
2. All users of this document must carry out all relevant investigations and must examine, take advice as required and satisfy themselves concerning the contents, correctness and sufficiency of the attachment and its contents for their purposes.

3. To the extent permitted by law, all conditions and warranties concerning this document or any use to which they may be put (whether as to quality, outcome, fitness, care, skill or otherwise) whether express or implied by statute, common law, equity, trade, custom or usage or otherwise are expressly excluded.

4. Any person using or relying on this document releases indemnifies, and will keep indemnified, Gray Puksand against all claims, liabilities, loss, costs and expenses arising directly or indirectly out of or in connection with such use or reliance including without limitation any misrepresentation, error or defect in this document.

Contractors to use Architectural drawings for set out. Contractors to check & verify all Dimensions on Site prior to Construction/Fabrication. Figured Dimensions take precedence over Scaled Dimensions. Any Discrepancies should be immediately referred to the Architect. All work to comply with N.C.C. Statutory Authorities & Relevant Australian Standards.

ARB - ACT Barry Hackett #2911 ARB - QLD Nik Tabain #6412
ARB - NSW Scott Mojan #7147 ARB - VIC CS2026



REV	DESCRIPTION	DATE
A	Department of Transport and Planning	24.03.2026

PROJECT NO 124125
DRAWN KF
CHECKED -
AUTHORISED -

StorHub
173-177 Barkly Avenue
Burnley, Victoria, 3121

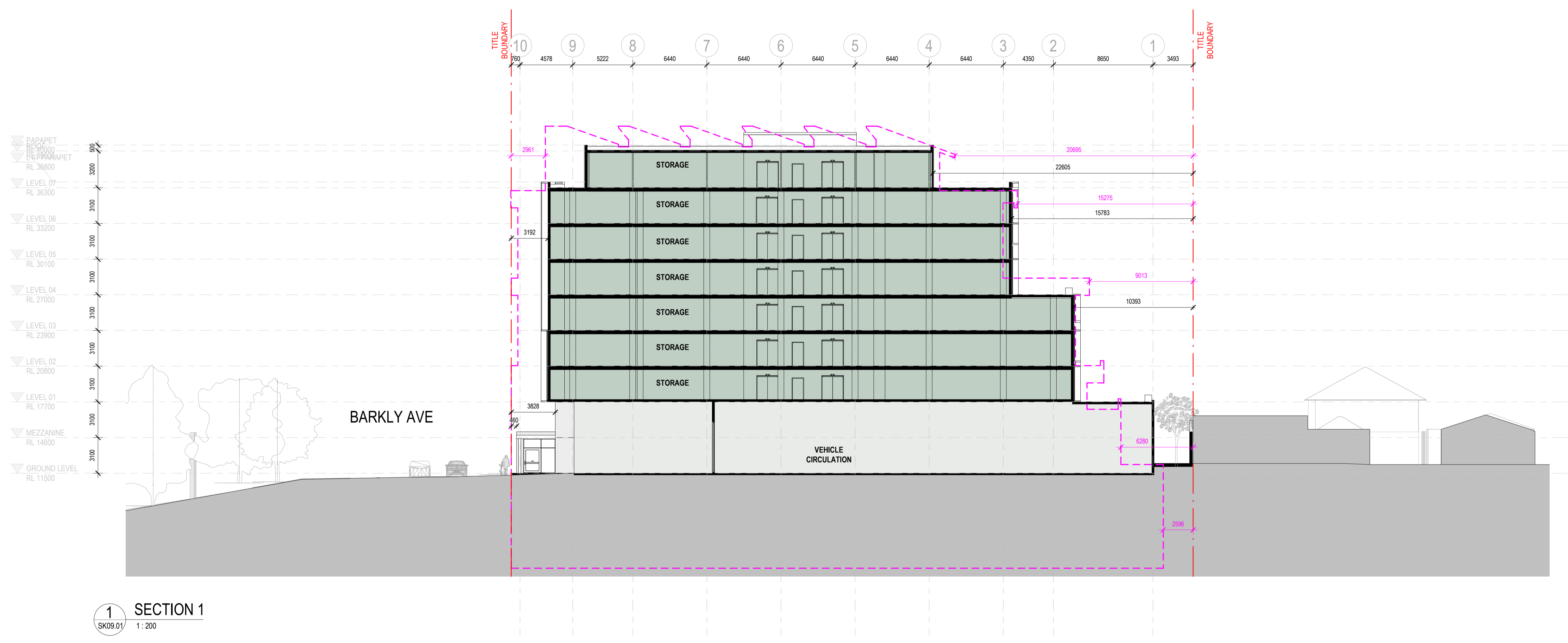
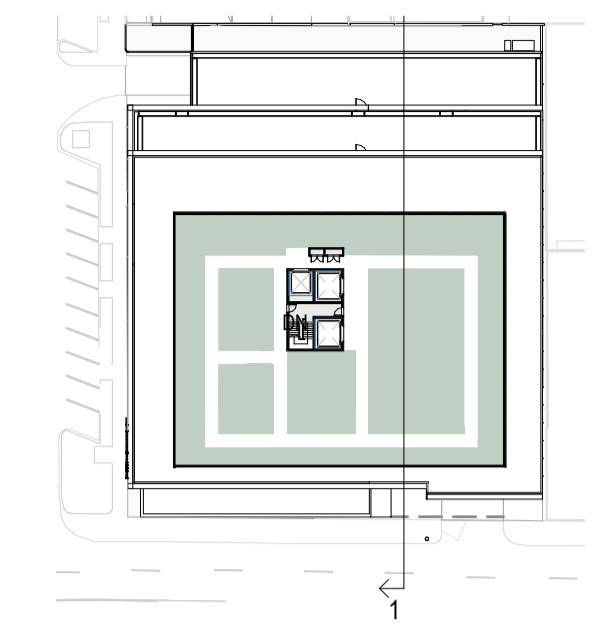
GRAY UKSAND

TOWN PLANNING

SOUTH & EAST ELEVATIONS

DWG # TP251 REV A
SCALE @ A1 1:200

This copied document to be made available for the sole purpose of enabling its consideration and review as part of a planning process under the Planning and Environment Act 1987. The document must not be used for any purpose which may breach any copyright



1 SECTION 1
SK09.01 1:200

ADVERTISED PLAN

LEGEND
- - - - - OUTLINE OF PREVIOUSLY APPROVED ENVELOPE
(PLANNING PERMIT PLN20/0868 - 20 DECEMBER 2021)

DISCLAIMER

This document may not be secure, may be corrupted in transmission or due to software incompatibility and/or may be amended or altered by third parties after leaving Gray Puksand's possession.
Gray Puksand is not responsible for and accepts no liability for such matters. Subject only to any conflicting provision within any prior binding agreement by Gray Puksand (which agreement may also contain additional conditions relating to this document and its use).
1. The content of this document is confidential and copyright in it belongs to Gray Puksand. They are permitted only to be opened, read and used by the addressee.
2. All users of this document must carry out all relevant investigations and must examine, take advice as required and satisfy themselves concerning the contents, correctness and sufficiency of the attachment and its contents for their purposes.

3. To the extent permitted by law, all conditions and warranties concerning this document or any use to which it may be put (whether as to quality, outcome, fitness, care, skill or otherwise) whether express or implied by statute, common law, equity, trade, custom or usage or otherwise are expressly excluded.
4. Any person using or relying on this document releases indemnifies, and will keep indemnified, Gray Puksand against all claims, liabilities, loss, costs and expenses arising directly or indirectly out of or in connection with such use or reliance including without limitation any misrepresentation, error or defect in this document.
Contractors to use Architectural drawings for set out.
Contractors to check & verify all Dimensions on Site prior to Construction/Fabrication. Figured Dimensions take precedence over Scaled Dimensions.
Any Discrepancies should be immediately referred to the Architect.
All work to comply with N.C.C. Statutory Authorities & Relevant Australian Standards.
ARB - ACT Barry Hackett #2911 ARB - QLD Nik Tabain #6412
ARB - NSW Scott Moyle #1147 ARB - VIC C3226

REV	DESCRIPTION	DATE
A	Department of Transport and Planning	24.03.2026

PROJECT NO	124125
DRAWN	KF
CHECKED	-
AUTHORISED	-
StorHub	
173-177 Barkly Avenue Burnley, Victoria, 3121	

GRAY UKSAND

TOWN PLANNING

SECTION 01

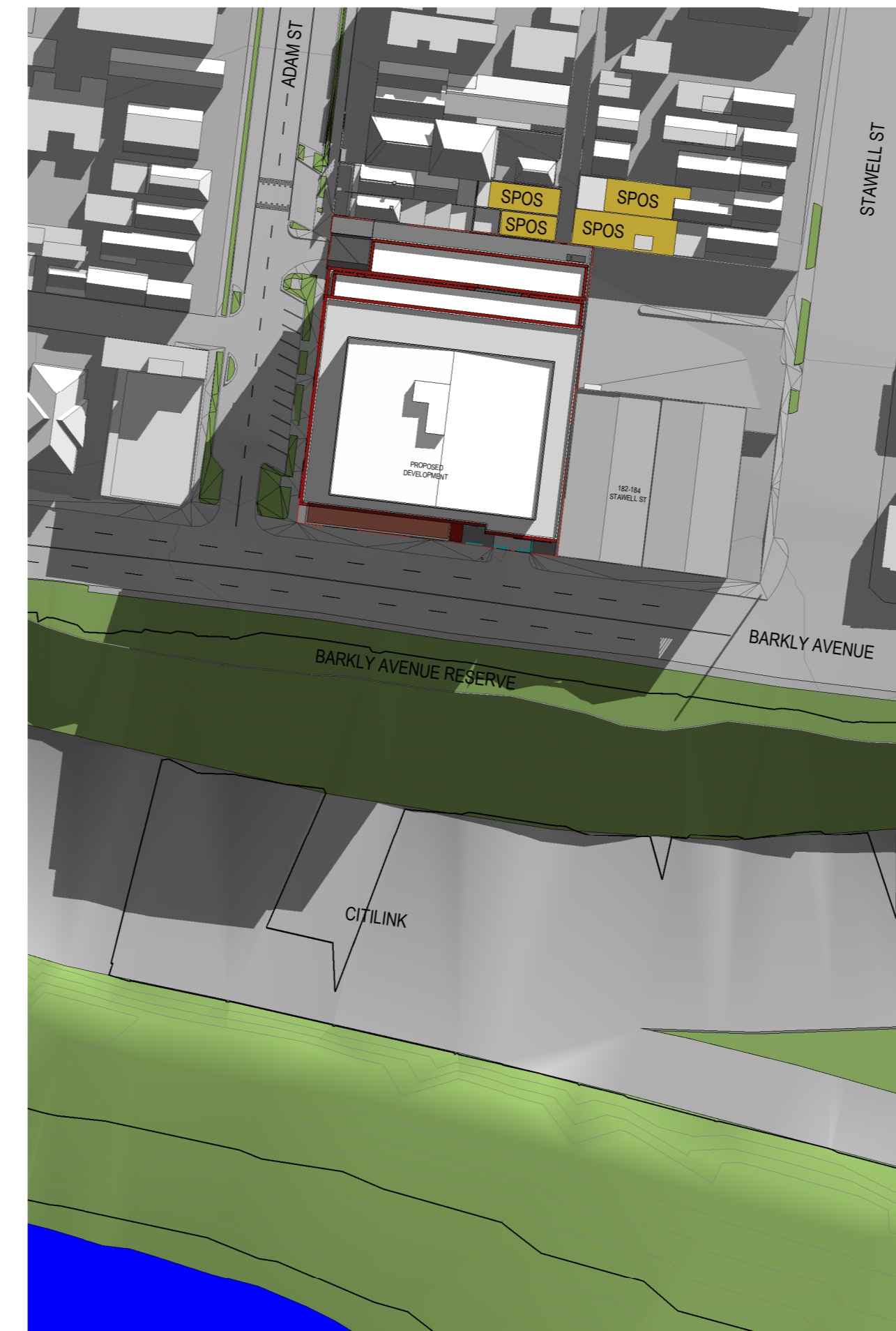
DWG #	TP260	REV	A
SCALE @ A1	As indicated		

ADVERTISED
PLAN

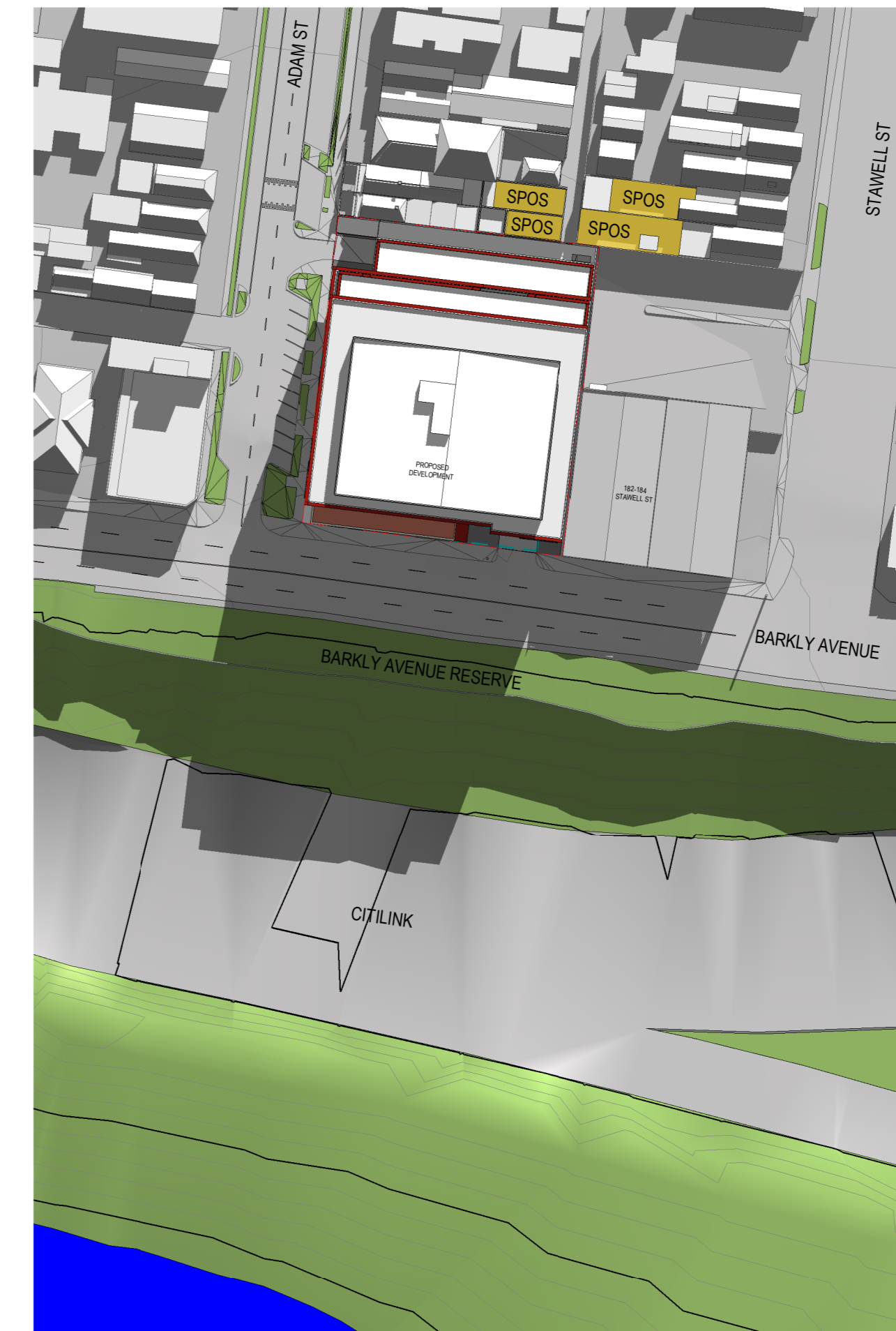
This copied document to be made available for the sole purpose of enabling its consideration and review as part of a planning process under the Planning and Environment Act 1987. The document must not be used for any purpose which may breach any copyright.



1 SHADOW STUDY - 22 JUN 10AM
1:1000



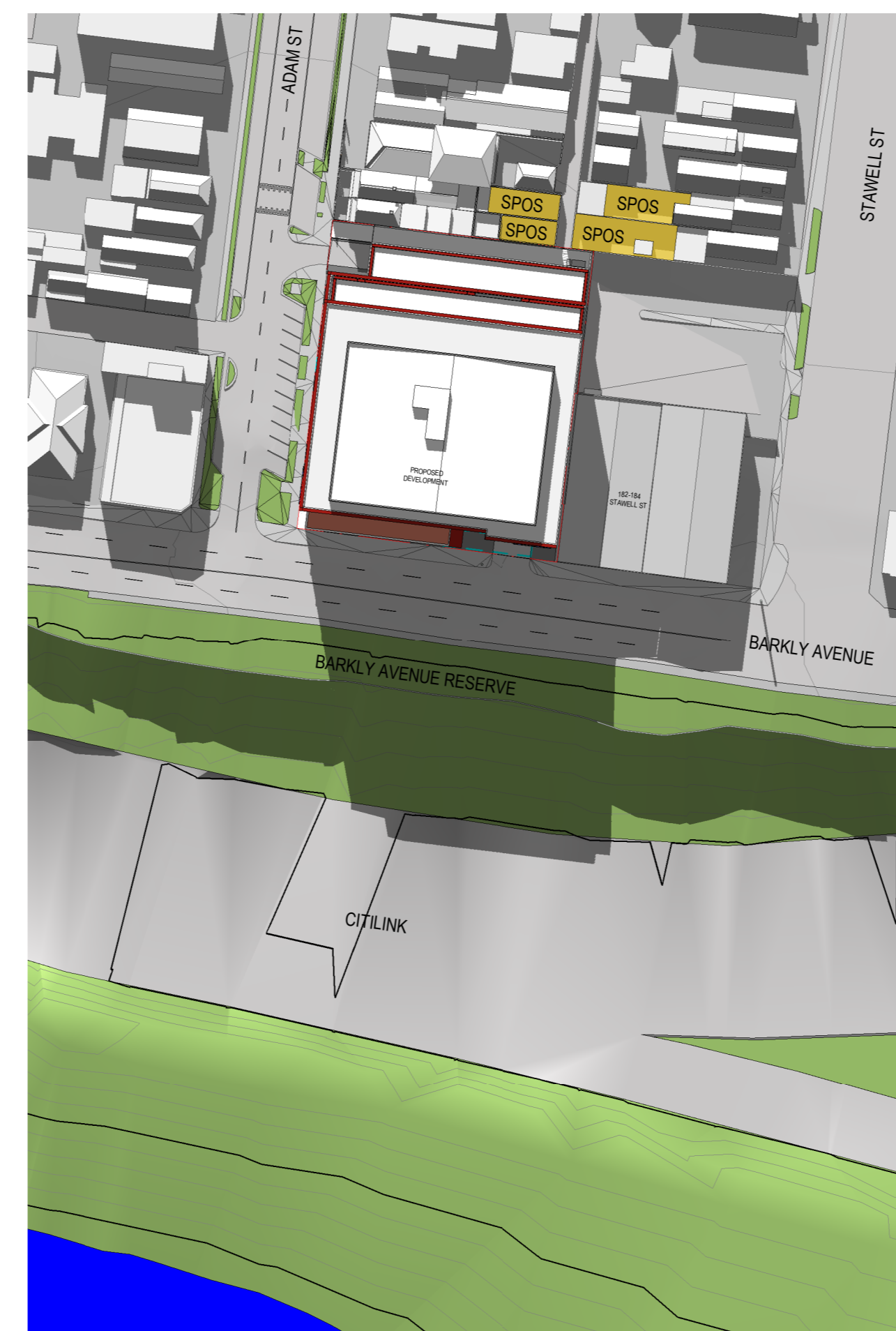
2 SHADOW STUDY - 22 JUN 11AM
1:1000



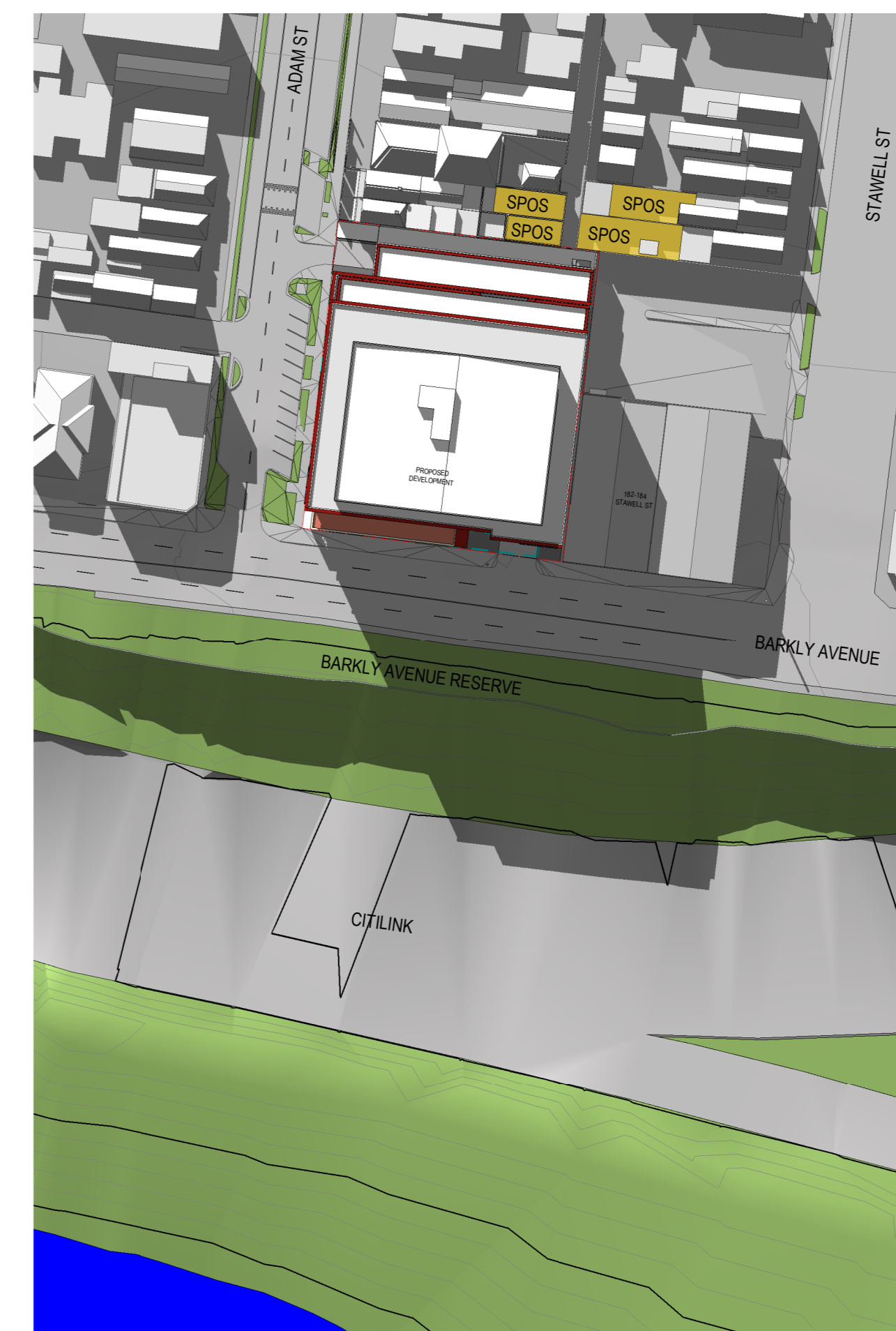
3 SHADOW STUDY - 22 JUN 12PM
1:1000



4 SHADOW STUDY - 22 JUN 1PM
1:1000



5 SHADOW STUDY - 22 JUN 2PM
1:1000



6 SHADOW STUDY - 22 JUN 3PM
1:1000

KEY
SPOS

GRAY PUKSAND

DISCLAIMER
This document may not be accurate, may be completed or amended or otherwise vary in any way without the prior written consent of Gray Pukсанд. It is provided for your information only and does not constitute an offer of any financial product. Gray Pukсанд is not responsible for and accepts no liability for such matters. Subject only to any conflicting provision within any prior binding agreement by Gray Pukсанд, this agreement may also contain additional conditions relating to the document and its use.
1. The content of this document is confidential and copyright is held by Gray Pukсанд. They are permitted only to be copied, read and used by the addressee.
2. All content of this document must comply with all relevant regulations and must, without limitation, take account of relevant and safety provisions concerning the content, completeness and sufficiency of the document and its contents for this purpose.
3. To the extent permitted by law, all conditions and warranties concerning this document or any use to which they may be put (whether as to quality, outcome, fitness, use, or otherwise) are hereby excluded or limited to the extent that the law permits. No liability is accepted for any loss or damage, including consequential loss, arising from the use of this document, whether or not such loss or damage is foreseeable.
4. Any person using or relying on this document (whether intended or not) shall be deemed to have agreed to indemnify Gray Pukсанд against all claims, losses, costs and expenses (including legal costs) in respect of its use in connection with such use or reliance including without limitation any retransmission, error or defect in this document.
Consent to issue is hereby given to use the content of this document for the purposes of the project.
Consent to check & verify all dimensions on site prior to Construction/Fabrication. Plans/Drawings shall be made available to the Architect.
All work to comply with N.C.C. - Building Act 1975 & Australian Standards.
ARB - ACT: Barry Hackett AR211 ARB - QLD: Nick Tulloh AR412
ARB - VIC: Scott Hagan AR147 ARB - VVIC: C2003



REV	DESCRIPTION	DATE
A	Department of Transport and Planning	24.03.2025

PROJECT NO: 124125
DRAWN: KF
CHECKED: FT
AUTHORISED: FT

StorHub
173-177 Barkly Avenue
Burnley, Victoria, 3121

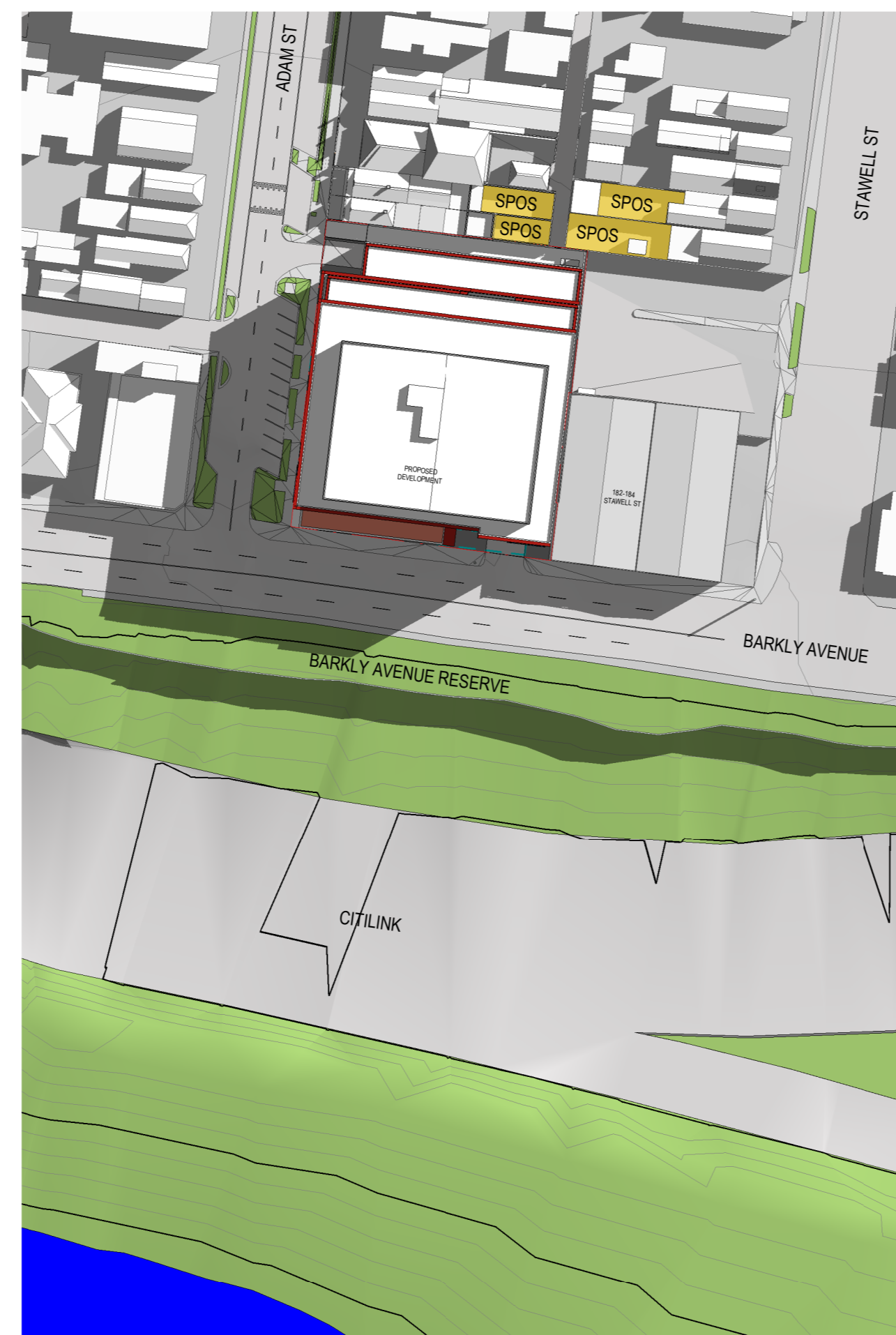
TOWN PLANNING

SHADOW STUDIES - WINTER

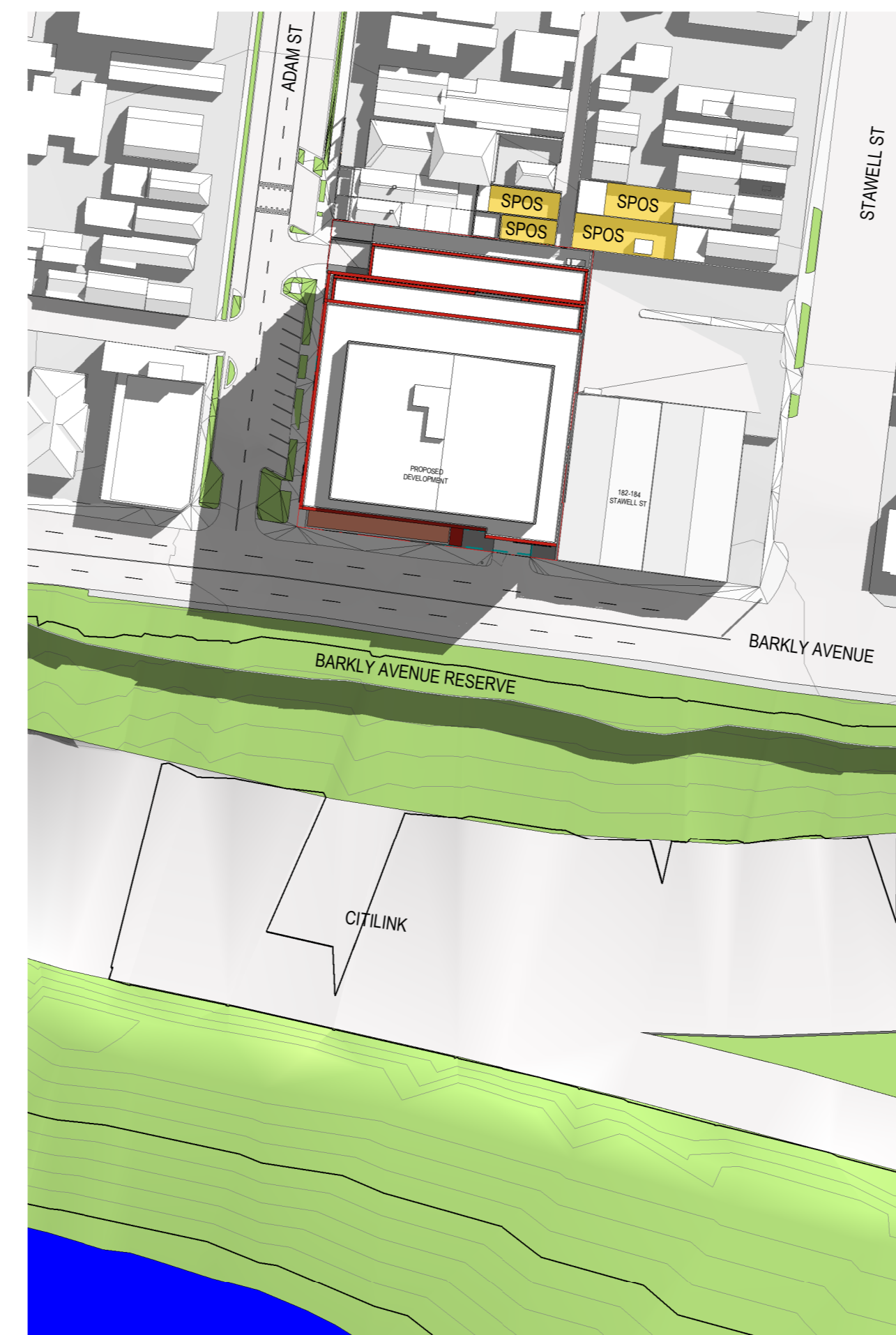
DWG # **TP300** REV **A**
SCALE @ A0 1:1000

ADVERTISED
PLAN

This copied document to be made available for the sole purpose of enabling its consideration and review as part of a planning process under the Planning and Environment Act 1987. The document must not be used for any purpose which may breach any copyright.



1 SHADOW STUDY - 22 SEPT 10AM
1:1000



2 SHADOW STUDY - 22 SEPT 11AM
1:1000



3 SHADOW STUDY - 22 SEPT 12PM
1:1000



4 SHADOW STUDY - 22 SEPT 1PM
1:1000



5 SHADOW STUDY - 22 SEPT 2PM
1:1000



6 SHADOW STUDY - 22 SEPT 3PM
1:1000

KEY
SPOS

GRAY PUKSAND

DISCLAIMER
This document may not be relied upon for completion of construction or other purposes without the express written consent of Gray Pukсанд. It is provided as a guide only and does not constitute a contract. The user of this document is advised to seek professional advice before relying on it.

1. The content of this document is confidential and copyright is held by Gray Pukсанд. It is provided as a guide only and does not constitute a contract. The user of this document is advised to seek professional advice before relying on it.

2. All aspects of this document must comply with all relevant regulations and standards. The user of this document is advised to seek professional advice before relying on it.

3. To the extent permitted by law, all conditions and warranties concerning this document or any work to which it may be put (whether as to quality, quantity, fitness, value, or otherwise) are hereby excluded or limited to the extent permitted by law.

4. Any person using or relying on this document does so at their own risk and without liability to Gray Pukсанд. Gray Pukсанд is not responsible for any loss or damage, including consequential loss, arising from the use of this document.

5. This document is provided as a guide only and does not constitute a contract. The user of this document is advised to seek professional advice before relying on it.

6. This document is provided as a guide only and does not constitute a contract. The user of this document is advised to seek professional advice before relying on it.

7. This document is provided as a guide only and does not constitute a contract. The user of this document is advised to seek professional advice before relying on it.

8. This document is provided as a guide only and does not constitute a contract. The user of this document is advised to seek professional advice before relying on it.

9. This document is provided as a guide only and does not constitute a contract. The user of this document is advised to seek professional advice before relying on it.

10. This document is provided as a guide only and does not constitute a contract. The user of this document is advised to seek professional advice before relying on it.

11. This document is provided as a guide only and does not constitute a contract. The user of this document is advised to seek professional advice before relying on it.

12. This document is provided as a guide only and does not constitute a contract. The user of this document is advised to seek professional advice before relying on it.

13. This document is provided as a guide only and does not constitute a contract. The user of this document is advised to seek professional advice before relying on it.

14. This document is provided as a guide only and does not constitute a contract. The user of this document is advised to seek professional advice before relying on it.

15. This document is provided as a guide only and does not constitute a contract. The user of this document is advised to seek professional advice before relying on it.

16. This document is provided as a guide only and does not constitute a contract. The user of this document is advised to seek professional advice before relying on it.

17. This document is provided as a guide only and does not constitute a contract. The user of this document is advised to seek professional advice before relying on it.

18. This document is provided as a guide only and does not constitute a contract. The user of this document is advised to seek professional advice before relying on it.

19. This document is provided as a guide only and does not constitute a contract. The user of this document is advised to seek professional advice before relying on it.

20. This document is provided as a guide only and does not constitute a contract. The user of this document is advised to seek professional advice before relying on it.

21. This document is provided as a guide only and does not constitute a contract. The user of this document is advised to seek professional advice before relying on it.

22. This document is provided as a guide only and does not constitute a contract. The user of this document is advised to seek professional advice before relying on it.

23. This document is provided as a guide only and does not constitute a contract. The user of this document is advised to seek professional advice before relying on it.

24. This document is provided as a guide only and does not constitute a contract. The user of this document is advised to seek professional advice before relying on it.

25. This document is provided as a guide only and does not constitute a contract. The user of this document is advised to seek professional advice before relying on it.



REV DESCRIPTION DATE

A Department of Transport and Planning 24.03.2025

PROJECT NO 124125

DRAWN KF

CHECKED FT

AUTHORISED FT

PROJECT NO 124125

DRAWN KF

CHECKED FT

AUTHORISED FT

PROJECT NO 124125

DRAWN KF

CHECKED FT

AUTHORISED FT

PROJECT NO 124125

DRAWN KF

CHECKED FT

AUTHORISED FT

PROJECT NO 124125

DRAWN KF

CHECKED FT

AUTHORISED FT

PROJECT NO 124125

DRAWN KF

CHECKED FT

AUTHORISED FT

PROJECT NO 124125

DRAWN KF

CHECKED FT

AUTHORISED FT

PROJECT NO 124125

DRAWN KF

CHECKED FT

AUTHORISED FT

PROJECT NO 124125

DRAWN KF

CHECKED FT

AUTHORISED FT

PROJECT NO 124125

DRAWN KF

CHECKED FT

AUTHORISED FT

PROJECT NO 124125

DRAWN KF

CHECKED FT

AUTHORISED FT

PROJECT NO 124125

DRAWN KF

CHECKED FT

AUTHORISED FT

PROJECT NO 124125

DRAWN KF

CHECKED FT

AUTHORISED FT

PROJECT NO 124125

DRAWN KF

CHECKED FT

AUTHORISED FT

PROJECT NO 124125

DRAWN KF

CHECKED FT

AUTHORISED FT

PROJECT NO 124125

DRAWN KF

CHECKED FT

AUTHORISED FT

PROJECT NO 124125

DRAWN KF

CHECKED FT

AUTHORISED FT

PROJECT NO 124125

DRAWN KF

CHECKED FT

AUTHORISED FT

PROJECT NO 124125

DRAWN KF

CHECKED FT

AUTHORISED FT

PROJECT NO 124125

DRAWN KF

CHECKED FT

AUTHORISED FT

PROJECT NO 124125

DRAWN KF

CHECKED FT

AUTHORISED FT

PROJECT NO 124125

DRAWN KF

CHECKED FT

AUTHORISED FT

PROJECT NO 124125

DRAWN KF

CHECKED FT

AUTHORISED FT

PROJECT NO 124125

DRAWN KF

CHECKED FT

AUTHORISED FT

PROJECT NO 124125

DRAWN KF

CHECKED FT

AUTHORISED FT

PROJECT NO 124125

DRAWN KF

CHECKED FT

AUTHORISED FT

PROJECT NO 124125

DRAWN KF

CHECKED FT

AUTHORISED FT

PROJECT NO 124125

DRAWN KF

CHECKED FT

AUTHORISED FT

PROJECT NO 124125

DRAWN KF

CHECKED FT

AUTHORISED FT

PROJECT NO 124125

DRAWN KF

CHECKED FT

AUTHORISED FT

PROJECT NO 124125

DRAWN KF

CHECKED FT

AUTHORISED FT

PROJECT NO 124125

DRAWN KF

CHECKED FT

AUTHORISED FT

PROJECT NO 124125

DRAWN KF

CHECKED FT

AUTHORISED FT

PROJECT NO 124125

DRAWN KF

CHECKED FT

AUTHORISED FT

PROJECT NO 124125

DRAWN KF

CHECKED FT

AUTHORISED FT

PROJECT NO 124125

DRAWN KF

CHECKED FT

AUTHORISED FT

PROJECT NO 124125

DRAWN KF

CHECKED FT

AUTHORISED FT

PROJECT NO 124125

DRAWN KF

CHECKED FT

AUTHORISED FT

PROJECT NO 124125

DRAWN KF

CHECKED FT

AUTHORISED FT

PROJECT NO 124125

DRAWN KF

CHECKED FT

AUTHORISED FT

PROJECT NO 124125

DRAWN KF

CHECKED FT

AUTHORISED FT

PROJECT NO 124125

DRAWN KF

CHECKED FT

AUTHORISED FT

PROJECT NO 124125

DRAWN KF

CHECKED FT

AUTHORISED FT

PROJECT NO 124125

DRAWN KF

CHECKED FT

AUTHORISED FT

PROJECT NO 124125

DRAWN KF

CHECKED FT

AUTHORISED FT

PROJECT NO 124125

DRAWN KF

CHECKED FT

AUTHORISED FT

PROJECT NO 124125

DRAWN KF

CHECKED FT

AUTHORISED FT

PROJECT NO 124125

DRAWN KF

CHECKED FT

AUTHORISED FT

PROJECT NO 124125

DRAWN KF

CHECKED FT

AUTHORISED FT

PROJECT NO 124125

DRAWN KF

CHECKED FT

AUTHORISED FT

PROJECT NO 124125

DRAWN KF

CHECKED FT

AUTHORISED FT

PROJECT NO 124125

DRAWN KF

CHECKED FT

AUTHORISED FT

</