

This copied document to be made available for the sole purpose of enabling its consideration and review as part of a planning process under the Planning and Environment Act 1987. The document must not be used for any purpose which may breach any copyright

CONSULTANT ADVICE NOTICE

PROJECT: 60-70 PARK STREET SOUTH MELBOURNE

CAN NO: N-001[1.0]

Date: 10 April 2026

Project No: 40958 - 001

Pages: 2

NAME	COMPANY	EMAIL
To: To whom it concerns	-	-

NDYLIGHT - PUBLIC LIGHTING

The lighting to the public realm zones surrounding the Park Street development by Time & Place at 60-74 Park Street South Melbourne 3205 are being designed in alignment with all relevant requirements including but not limited to the following:

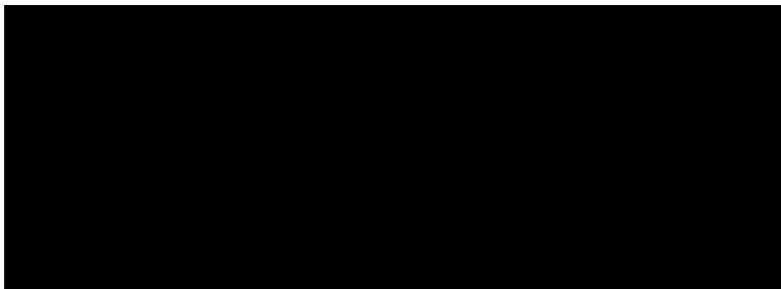
- Compliance to AS/NZS 4282:2023 Control of the obtrusive effects of outdoor lighting
- Compliance to AS/NZS 1158.3.1:2020 Lighting for Roads and public spaces Part 3.1 Pedestrian area (Category P) lighting – Performance and design requirements
 - Category PR3 – Central City use to Little Bank Street
 - Category PP2 – Pedestrian Footpath – Park Street

As part of the submission, NDYLIGHT has provided the following:

- Plan drawing sketches outlining the exterior and street lighting scope to the road areas directly adjacent to the project site
- Elevation drawing sketches outlining the locations and mounting heights for facade lighting elements
- Luminaire specifications for all exterior lighting
- Lighting calculations defining all relevant calculation outputs as required by Council

NDYLIGHT has undertaken a street lighting assessment by lighting simulation calculations using software AGI32, and assessed the results against the technical lighting parameters as defined in AS/NZS 1158.3.1:2020. The calculations in the overleaf demonstrate that the proposed lighting solution compiles with all relevant recommended lighting parameters.

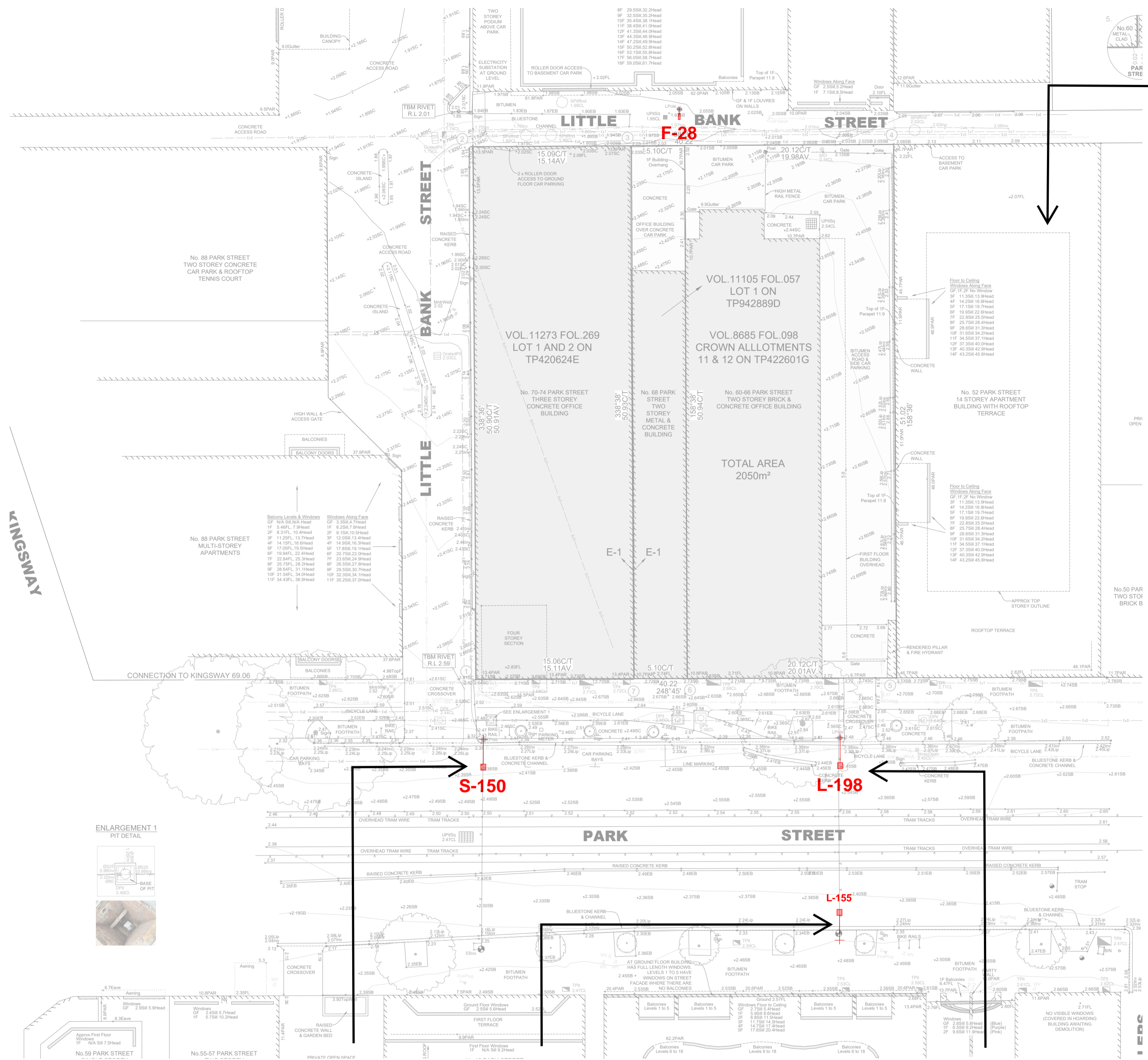
Regards



**This copied document to be made available
for the sole purpose of enabling
its consideration and review as
part of a planning process under the
Planning and Environment Act 1987.
The document must not be used for any
purpose which may breach any
copyright**

60-70 Park St, South Melbourne

EXISTING STREET LIGHTING SITE VISIT



SURVEY PLAN
SCALE N.T.S.



EXISTING STREET LIGHTING

NDYLIGHT conducted a site visit on 11th of March 2026 to investigate and catalog the street luminaire types and locations. Using the survey drawing provided by Taylors and the NDYLIGHT site visit, the lighting was modeled as per AS1158 using AGI32 to evaluate the existing light levels of the site. Based on the calculated light levels of the existing lighting design, the applicable AS1158 lighting categories were determined. All relocations of the existing street lights are to maintain the determined lighting category.

LUMINAIRE SCHEDULE

Based on available technical data the luminaire types were determined to be the following types:

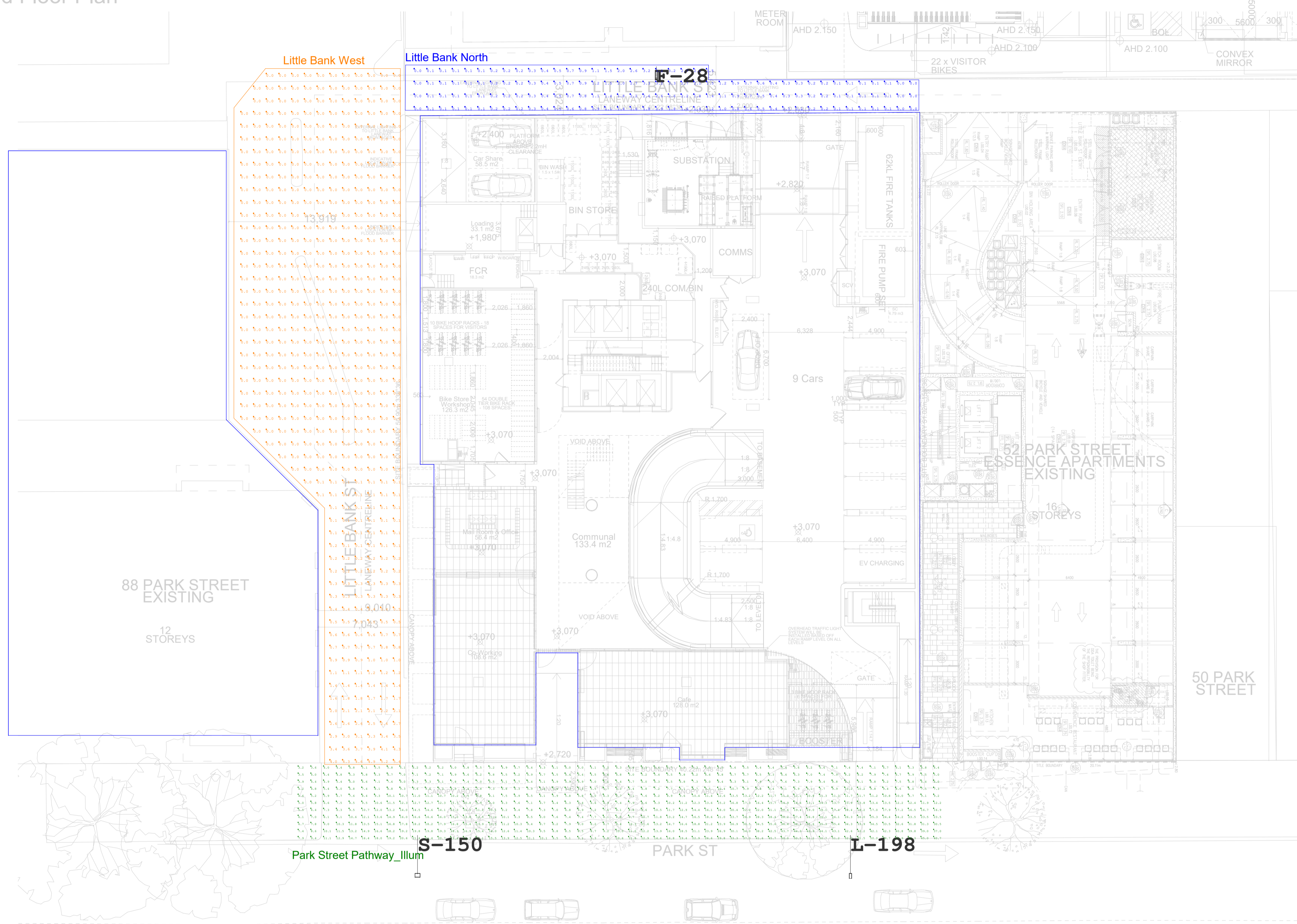
- F28** - PIERLITE T5 TWIN FLURO - 14W; 4K; 300mm outreach arm; 4000mm AGL mounting height
- S150** - Roadster MH150D - 201016 - PR; 3000mm outreach arm; 8000mm AGL mounting height
- L155A** - Sylvania Citipower approved luminaire with aeroscreen - RoadLED 155W 4K AERO 216207x ; 3000mm outreach arm; 8000mm AGL mounting height
- L-198** - Aldridge 198 W 4K V162198WT2N7PBP DP18 ; 3000mm outreach arm; 8000mm AGL mounting height

This copied document to be made available for the sole purpose of enabling its consideration and review as part of a planning process under the Planning and Environment Act 1987. The document must not be used for any purpose which may breach any copyright

60-70 Park St, South Melbourne

EXISTING STREET LIGHTING ASSESMENT

Park Street
Ground Floor Plan



LIGHTING ASSESSMENT CALCULATION

The existing street lighting was modeled as per AS1158 using AGI32 to confirm what the applicable lighting category is.

PARK STREET FOOTPATH

Park Street footpath appears to be performing to meet a lighting category of PP2. Consistent with AS 1158.3.1 described as a local street used primarily for access to abutting properties, including residential, commercial and industrial precincts.

RESULTS

Park Street Footpath					
	Average horizontal illuminance (E _h)	Point horizontal illuminance (E _{ph})	Illuminance (horizontal) uniformity Cat. P (U ₂) (max/avg)	Point vertical illuminance (E _{pv})	Complies?
AS 1158.3.1 Cat PP2	7	1	5	0.3	
Results	13.12	3.20	3.96	0.40	Y

LITTLE BANK - WEST

The existing street lighting along Little Bank - West does not appear to be performing at any applicable lighting category consistent with AS 1158.3.1. As defined in the City of Melbourne Lighting Lighting Strategy (2021) for traffic safety and pedestrian amenity Category PR3 is proposed to be used for central city streets. Little Bank West was assessed against PR3 lighting parameters.

Little Bank West				
	Average horizontal illuminance (E _h)	Point horizontal illuminance (E _{ph})	Illuminance (horizontal) uniformity Cat. P (U ₂) (max/avg)	Complies?
AS 1158.3.1 Cat PR3	1.75	0.3	8	
Results	0.28	0.00	19.29	N

LITTLE BANK - NORTH

The existing street lighting along Little Bank - North does not appear to be performing at any applicable lighting category consistent with AS 1158.3.1. As defined in the City of Melbourne Lighting Lighting Strategy (2021) for traffic safety and pedestrian amenity Category PR3 is proposed to be used for central city streets. Little Bank North was assessed against PR3 lighting parameters.

RESULTS

Little Bank North				
	Average horizontal illuminance (E _h)	Point horizontal illuminance (E _{ph})	Illuminance (horizontal) uniformity Cat. P (U ₂) (max/avg)	Complies?
AS 1158.3.1 Cat PR3	1.75	0.3	8	
Results	0.77	0.00	4.29	N

This copied document to be made available for the sole purpose of enabling its consideration and review as part of a planning process under the Planning and Environment Act 1987. The document must not be used for any purpose which may breach any copyright

SURVEY PLAN
SCALE N.T.S.

AGI32 - RESULTS TABLE

Calculation Summary					
Scene: Luminaire Type					
Label	CalcType	Units	Avg	Min	Max/Avg
Little Bank North	Illuminance	Lux	0.77	0.0	4.29
Little Bank West	Illuminance	Lux	0.28	0.0	19.29
Park Street Pathway_Illum	Illuminance	Lux	13.12	3.2	3.96
Park Street Pathway_Vert_Illum	Vertical Illum.	Lux	N.A.	0.4	N.A.

60-70 Park Street, SOUTH MELBOURNE Street Lighting Assessment

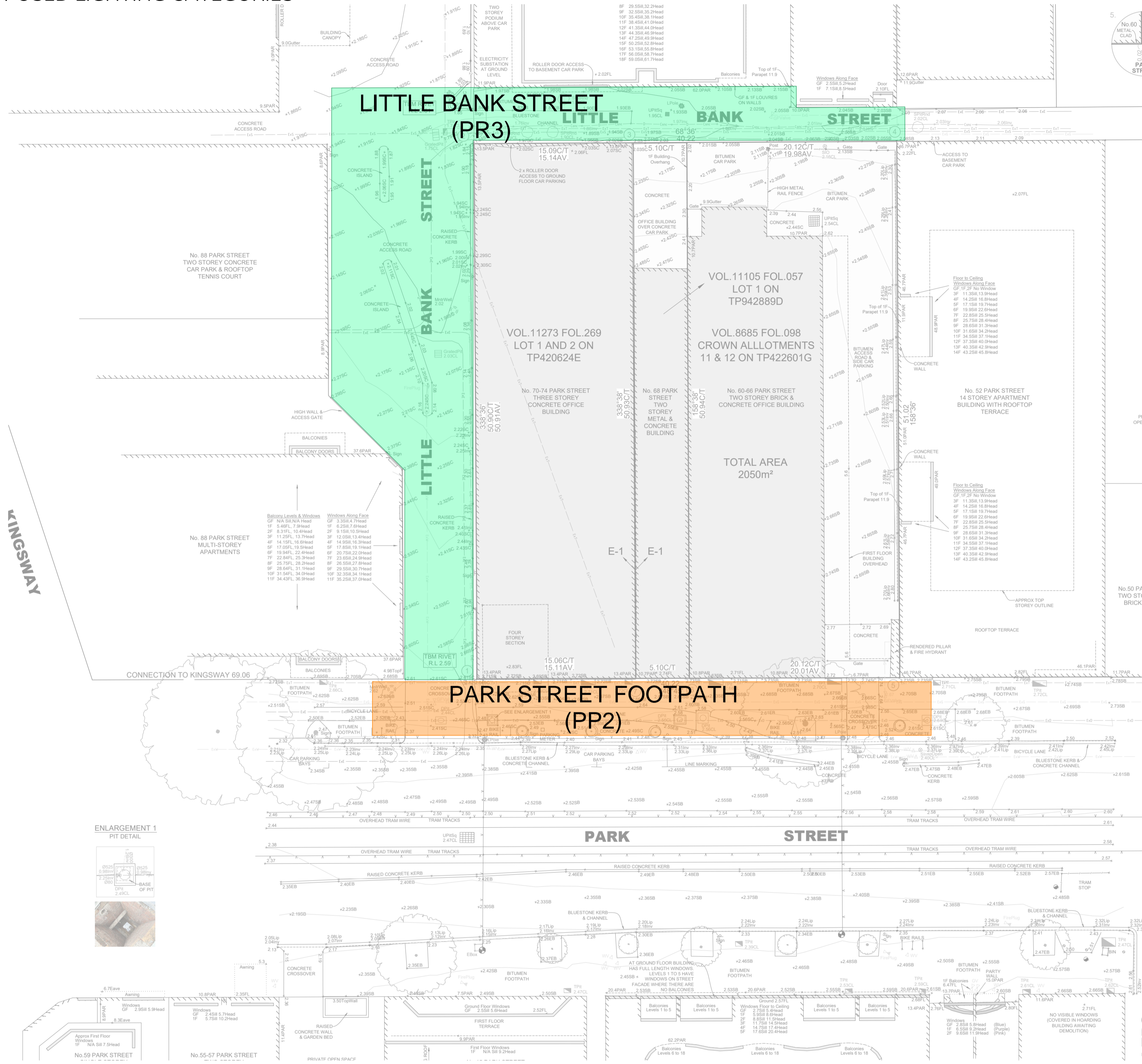
Sketch No. M40958-001N-SK01
Revision Date: 10.04.2026
Revision: 01

NDYLIGHT

L I G H T I N G D E S I G N

60-70 Park St, South Melbourne

PROPOSED LIGHTING CATEGORIES



LIGHTING CATEGORIES

The landscape concept design was reviewed against AS1158 lighting categories and sub-categories and applicable categories was selected as per below:

PARK STREET FOOTPATH

Park Street footpath is deemed to be a lighting category of PP2. The existing street lighting is performing at a lighting category of PP2. Consistent with AS 1158.3.1 described as a local street used primarily for access to abutting properties, including residential, commercial and industrial precincts.

LITTLE BANK STREET

As defined in the City of Melbourne Lighting Strategy (2021) for traffic safety and pedestrian amenity Category PR3 is proposed to be used for central city streets. Little Bank lighting is proposed to be designed to meet category PR3.

This copied document to be made available for the sole purpose of enabling its consideration and review as part of a planning process under the Planning and Environment Act 1987. The document must not be used for any purpose which may breach any copyright

LIGHTING CATEGORIES MARKUP

SCALE N.T.S.

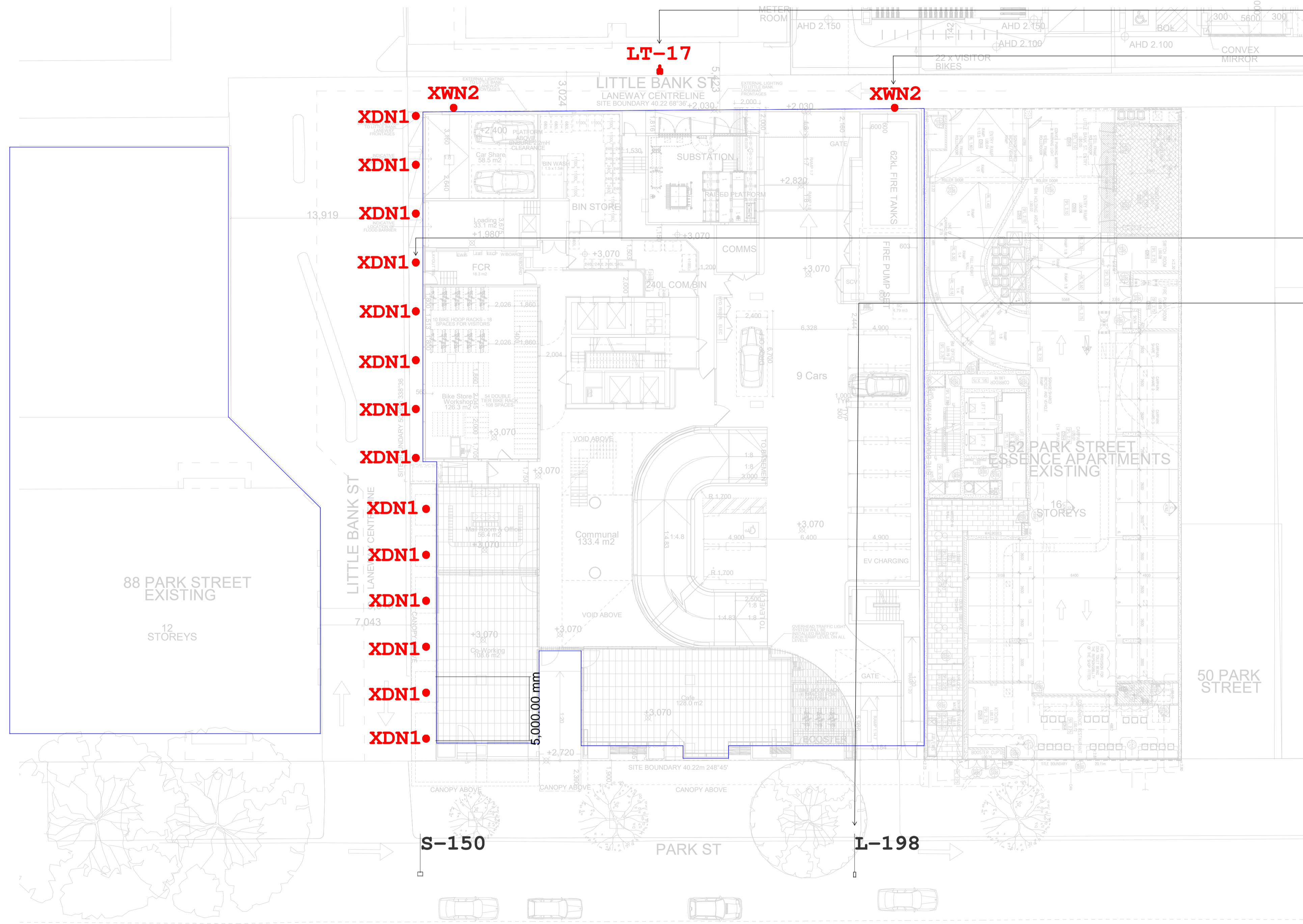
60-70 Park St, South Melbourne

PROPOSED EXTERIOR LIGHTING LAYOUT

Park Street

Ground Floor Plan

This copied document to be made available for the sole purpose of enabling its consideration and review as part of a planning process under the Planning and Environment Act 1987. The document must not be used for any purpose which may breach any copyright



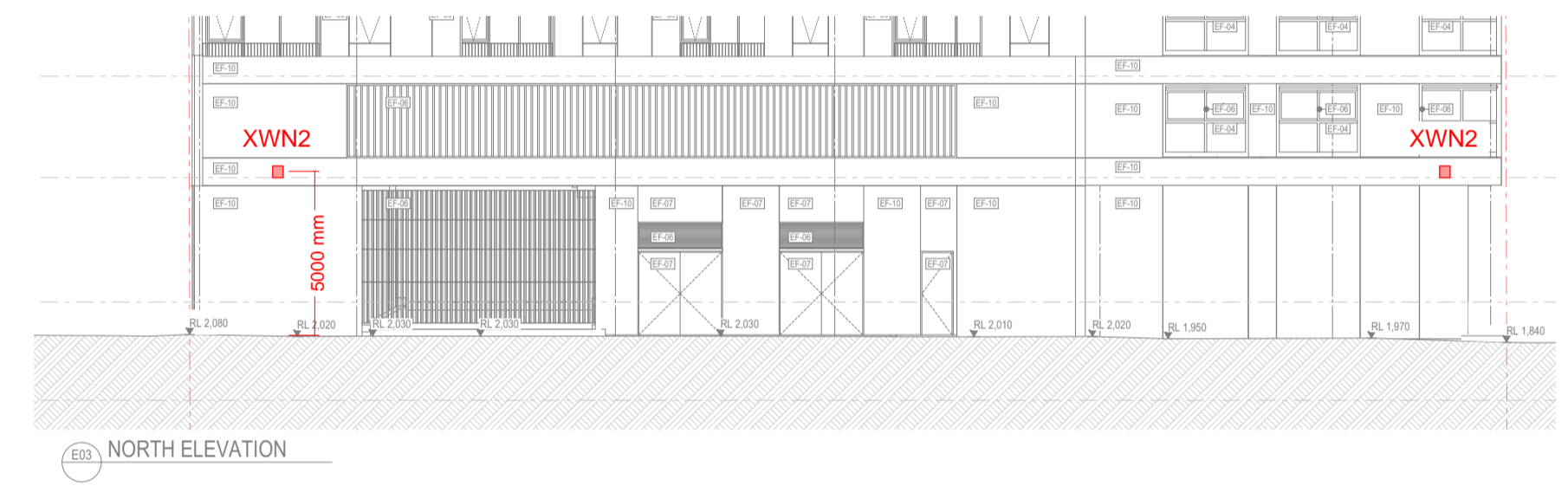
EXISTING STREET POLE TO BE RETAINED. LANTERN TO BE UPGRADED TO MODERN LED.

WALL LIGHTS MOUNTED TO FACADE AT ~5000MM AFFL


CAN DOWNLIGHTS SURFACE MOUNTED TO CANOPY SOFFIT


STREET LIGHTING ALONG PARK ST TO BE RETAINED AS EXISTING


LITTLE BANK STREET NORTH - ELEVATION



LUMINAIRE SCHEDULE

LT-17
 Sylvania Citipower approved luminaire with aeroscreen StreetLED3 AERO 180805; 17W 4000K 200mm Outreach arm 4000mm AGL mounting height

XDN1
 Ligman JET 41; JE-80052-AS-8030; Surface mounted to canopy soffit; 20W 2218LM 3000K ASYMMETRIC FLOOD 46°x56°; 160mm (Dia) x 140mm (H)

XWN2
 Surface mounted to facade at ~5000mm AFFL; Ligman JET 31; JE-30351-VW-8040; 14W 1315LM 3000K VERY WIDE FLOOD 72°; 102mm (Dia) x 218mm (H)

S-150

LT-155

AGI32 MODELLING
SCALE 1:200

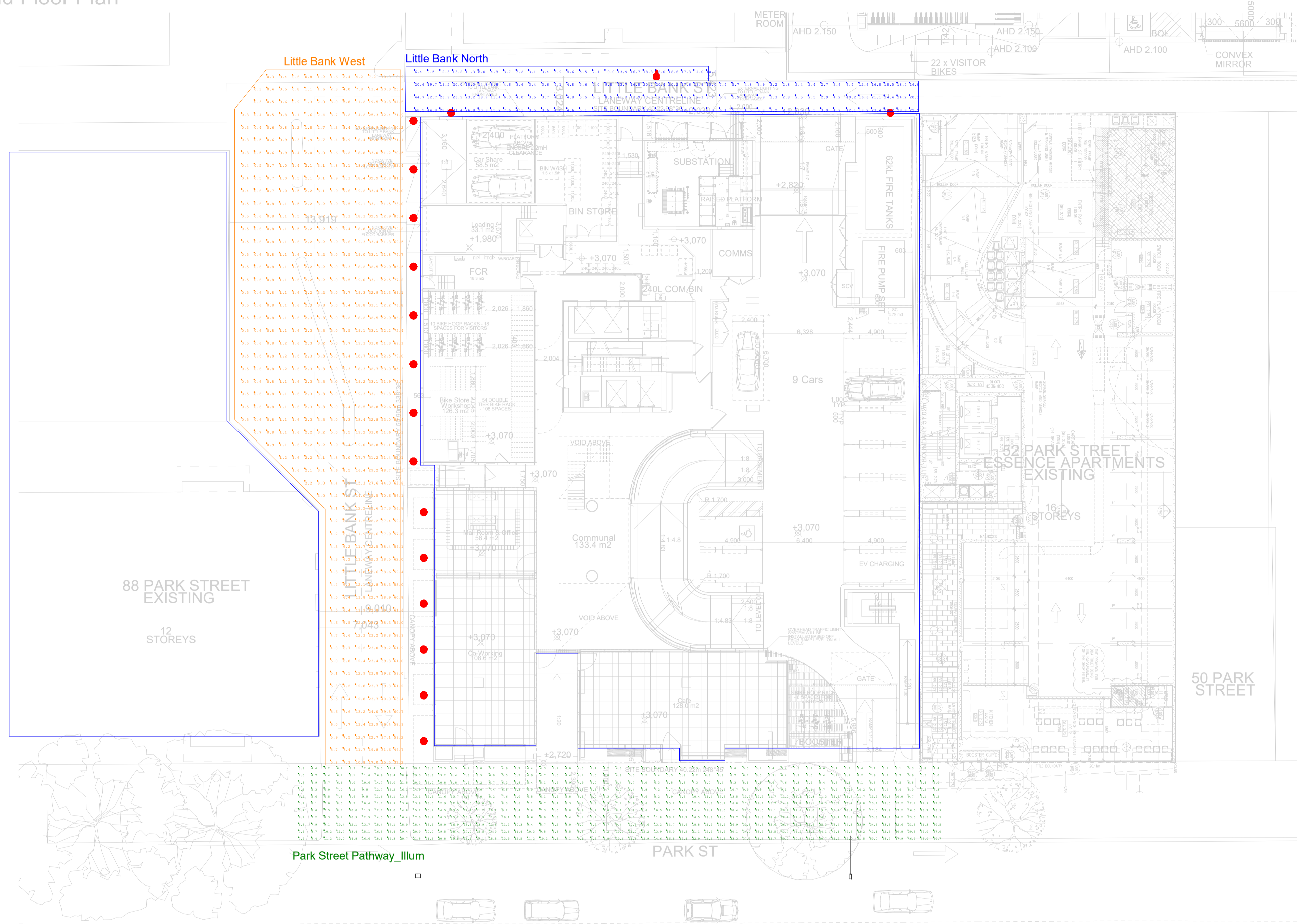
60-70 Park Street, SOUTH MELBOURNE Street Lighting Assessment

Sketch No. M40958-001N-SK01
Revision Date: 10.04.2026
Revision: 01



60-70 Park St, South Melbourne

PROPOSED LIGHTING CALCULATION ASSESSMENT
Ground Floor Plan



PROPOSED EXTERIOR LIGHTING ASSESSMENT

The proposed exterior lighting was modeled as per AS1158 using AGI32 to confirm that the proposal meets the applicable lighting category technical parameters.

PARK STREET FOOTPATH

Existing street lighting on Park Street footpath is performing to meet a lighting category of PP2.

RESULTS

Park Street Footpath					
	Average horizontal illuminance (E _a)	Point horizontal illuminance (E _{ph})	Illuminance (horizontal) uniformity Cat. P (U ₂)(max/avg)	Point vertical illuminance (E _{pv})	Complies?
AS 1158.3.1 Cat PP2	7	1	5	0.3	
Results	13.85	3.80	3.75	0.40	Y

LITTLE BANK - WEST

As defined in the City of Melbourne Lighting Strategy (2021) for traffic safety and pedestrian amenity Category PR3 is proposed to be used for central city streets. Little Bank West was assessed against PR3 lighting parameters.

RESULTS

Little Bank West				
	Average horizontal illuminance (E _a)	Point horizontal illuminance (E _{ph})	Illuminance (horizontal) uniformity Cat. P (U ₂)(max/avg)	Complies?
AS 1158.3.1 Cat PR3	1.75	0.3	8	
Results	17.36	0.30	4.99	Y

LITTLE BANK - NORTH

As defined in the City of Melbourne Lighting Strategy (2021) for traffic safety and pedestrian amenity Category PR3 is proposed to be used for central city streets. Little Bank North was assessed against PR3 lighting parameters.

RESULTS

Little Bank North				
	Average horizontal illuminance (E _a)	Point horizontal illuminance (E _{ph})	Illuminance (horizontal) uniformity Cat. P (U ₂)(max/avg)	Complies?
AS 1158.3.1 Cat PR3	1.75	0.3	8	
Results	11.88	2.40	5.77	Y

This copied document to be made available for the sole purpose of enabling its consideration and review as part of a planning process under the Planning and Environment Act 1987. The document must not be used for any purpose which may breach any copyright

AGI32 MODELLING
SCALE N.T.S.

AGI32 - RESULTS TABLE

Calculation Summary					
Scene: Luminaire Type					
Label	CalcType	Units	Avg	Min	Max/Avg
Little Bank North	Illuminance	Lux	11.88	2.4	5.77
Little Bank West	Illuminance	Lux	17.36	0.3	4.99
Park Street Pathway_Illum	Illuminance	Lux	13.85	3.8	3.75
Park Street Pathway_Vert_Illum	Vertical Illum.	Lux	N.A.	0.4	N.A.

UWLR Area Summary		
Scene: Luminaire Type		
Label	Area	UWLR
UWLR	13828	0.004

60-70 Park Street, SOUTH MELBOURNE
Street Lighting Assessment

Sketch No. M40958-001N-SK01
Revision Date: 10.04.2026
Revision: 01

NDYLIGHT
LIGHTING DESIGN