

MGS CENTRE FOR HUMANITIES

Issued for Town Planning

ADVERTISED
PLAN

This copied document to be made available for the sole purpose of enabling its consideration and review as part of a planning process under the Planning and Environment Act 1987. The document must not be used for any purpose which may breach any copyright



ISSUED FOR TOWN PLANNING

NO.	DATE:	DESCRIPTION:	BY:	CHK:
01	15.03.2023	Issued for information - 50% SD	cs	sk
02	21.04.2023	Issued for Information - SD 100%	cs	sk
03	19.05.2023	Issued for Town Planning	cs	sk

Project Design:
SITE | OFFICE
 © Site Office Pty Ltd 16 Homestead Road Eltham VIC 3095 Australia Ph 9384 6934 Web www.siteoffice.com.au

Client:	MGS
Date:	19.05.2023
Drawing Scale:	n/a

Drawing Title:	Landscape Title
MGS CENTRE FOR HUMANITIES	

Drawing Revision:	03
Drawing Number:	LA001

LANDSCAPE DRAWING SCHEDULE								
TYPE	NUMBER	DRAWING NAME	SCALE	SIZE	REVISION	REVISION DATE	REVISION TYPE	
Schedules	LA 001	Landscape Title	N/A	A1	03	19.05.2023	Issued For Town Planning	
	LA 002	Landscape Drawing Schedule & Executive Summary	N/A	A1	03	19.05.2023	Issued For Town Planning	
General Plans	LA 105	Landscape Site Plan	1:200	A1	03	19.05.2023	Issued For Town Planning	
	LA 110	Landscape Detail Plan - Ground G01 Area 01	1:50	A1	03	19.05.2023	Issued For Town Planning	
	LA 111	Landscape Detail Plan - Ground G01 Area 02	1:50	A1	03	19.05.2023	Issued For Town Planning	
	LA 112	Landscape Detail Plan - Ground G01 Area 03	1:50	A1	03	19.05.2023	Issued For Town Planning	
	LA 113	Landscape Detail Plan - Ground G01 Area 04	1:50	A1	03	19.05.2023	Issued For Town Planning	
	LA 114	Landscape Detail Plan - Ground G01 Area 05	1:50	A1	03	19.05.2023	Issued For Town Planning	
	LA 115	Landscape Detail Plan - Basement B01 Reflection Garden	1:50	A1	03	19.05.2023	Issued For Town Planning	
	LA 116	Landscape Detail Plan - Roof L03	1:50	A1	03	19.05.2023	Issued For Town Planning	
	General Sections	LA 200	Landscape Sections - Section AA	1:50	A1	03	19.05.2023	Issued For Town Planning
		LA 201	Landscape Sections - Section BB	1:50	A1	03	19.05.2023	Issued For Town Planning

EXECUTIVE SUMMARY - LANDSCAPE:

PROJECT VISION

“The School vision is to give its students the finest possible education, where each staff member and teacher can pursue excellence. We need to ensure that our outcomes are not limited by constraints within the building or environment. Providing an English and Humanities centre that inspires, engages and supports the teaching of our students using modern, professional techniques will assist us in achieving our vision.”

CHAPEL QUAD (GROUND LEVEL)

The courtyard garden is an important entrance into the school grounds for students, staff and visitors. It will be welcoming and accessible, drawing people into the courtyard and the school. Surrounded by the imposing bluestone heritage buildings of the Chapel and the old school on one side and the new Centre for Humanity building on the other, the project will transform the courtyard into a gathering space that carefully orchestrates the flow and movement of people at different times of the day and year as they enter and leave the school and move from place to place. The Chapel Quad will become an important meeting place where large and small groups of people can gather. The final selection of plants for the Chapel Quad is currently being developed in close consultation with the school's Grounds and Horticultural team.

REFLECTION GARDEN (BASEMENT)

The reflection garden located in the middle of the Chapel Quad is an oasis of green in a surprising location. It provides a focal point for the Chapel Quad and an exciting backdrop to the Agora. It is a protected and controlled subterranean environment that provides the environmental conditions (light, water, air and nutrients) that supports a living and thriving collection of interesting plants. It is a surprising occurrence within the order of the building and the city - a wild and unexpected place. This garden will be a carefully curated collection of diverse, sculptural and lush plants. The garden will be a very compelling world to look within, and so lends itself very well to a contemplative viewing garden, a moment to rest your eyes and your mind and a fascinating juxtaposition between the old plants and the new building.

ROOFTOP GARDEN (LEVEL 03)

The rooftop garden fulfils a number of important roles including insulation of the roof from heat and cold, supporting biodiversity by providing a range of flowering plants that provide food and habitat for insects and birds and providing a calming visual outlook from within the building across a planted, green terrace. The rooftop garden is an exciting opportunity to curate an expansive plant and mulch palette to create a living map, providing a view and perspective of the reflected scale of the natural world.

DESIGN WITH COUNTRY CONSULTATION PROCESS

Melbourne Grammar School's First Nations Program Steering Committee has been working closely with senior Boon Wurrung and Wamba Wamba Elder Aunty Fay for several years, predominately at their Grimwade Campus. The new Centre for Humanities within senior school located on Bunurong Country provides a fitting opportunity for engagement of the school's indigenous students, steering committee, project design teams and Aunty Fay to work together on connecting with Country.

In conjunction with AECOM's First Nations Director, Josh Loyd, focussed workshops with Aunty Fay and the First Nation's students are ongoing to develop various approaches to inclusion within the building, place and landscape of the Centre for Humanities. The in-depth collaboration focusses on culture, language, people, local flora and fauna, community and most importantly enhancing the connection with Country, not just for the wider Melbourne Grammar school community, most importantly for the First Nation's students both currently enrolled and former pupils of the school whose backgrounds include an extensive variety of Indigenous Nations across Australia and Torres Strait islands.

The Centre for Humanities Designing with Country workshops commenced during concept design phase, have continued through schematic design, and culminate as a major focus within the design development stage. As such, Melbourne Grammar and the project design teams require additional time to allow these conversations of listening and understanding to continue developing organically to ensure appropriate inclusion within the place.

ADVERTISED PLAN

This copied document to be made available for the sole purpose of enabling its consideration and review as part of a planning process under the Planning and Environment Act 1987. The document must not be used for any purpose which may breach any copyright

NO.	DATE:	DESCRIPTION:	BY:	CHK:
01	15.03.2023	Issued for information - 50% SD	cs	sk
02	21.04.2023	Issued for information - SD 100%	cs	sk
03	19.05.2023	Issued for Town Planning	cs	sk



Client:	MGS
Date:	19.05.2023
Drawing Scale:	n/a

Drawing Title:	Landscape Schedules & General Notes
MGS CENTRE FOR HUMANITIES	

Drawing Revision:	03
Drawing Number:	LA002

ISSUED FOR TOWN PLANNING

MATERIALS LEGEND

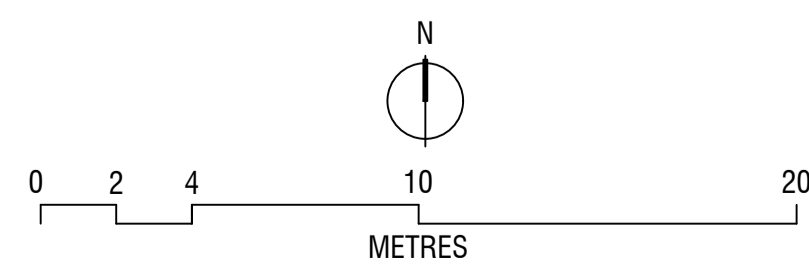
- ASP
Asphalt Pavement
- BRK
Recycled Brick Pavement
- SP1
Stone Pavement
- GB1
Garden Bed on Ground
- GB2
Garden Bed On Structure
- BS
Precast Bench Seat

**ADVERTISED
PLAN**

This copied document to be made available for the sole purpose of enabling its consideration and review as part of a planning process under the Planning and Environment Act 1987. The document must not be used for any purpose which may breach any copyright



NO.	DATE:	DESCRIPTION:	BY:	CHK:
01	15.03.2023	Issued for Information- SD 50%	cs	sk
02	21.04.2023	Issued for information - SD 100%	cs	sk
03	19.05.2023	Issued for Town Planning	cs	sk



Project Design:
SITE | OFFICE
© Site Office Pty Ltd 18 Lincoln Street Brunswick East VIC 3057 Australia Ph 9384 6934 Web www.siteoffice.com.au

Client:	MGS
Date:	19.05.2023
Drawing Scale:	1:200 (A1)

Drawing Title:
ISSUED FOR TOWN PLANNING
 Landscape Site Plan
MGS CENTRE FOR HUMANITIES

Drawing Revision:	03
Drawing Number:	LA105

DOMAIN ROAD

B

MATERIALS LEGEND

- ASP
Asphalt Pavement
- BRK
Recycled Brick Pavement
- SP1
Stone Pavement
- GB1
Garden Bed on Ground
- GB2
Garden Bed On Structure
- BS
Precast Bench Seat
- RL
Indicative Finished Level



CODES

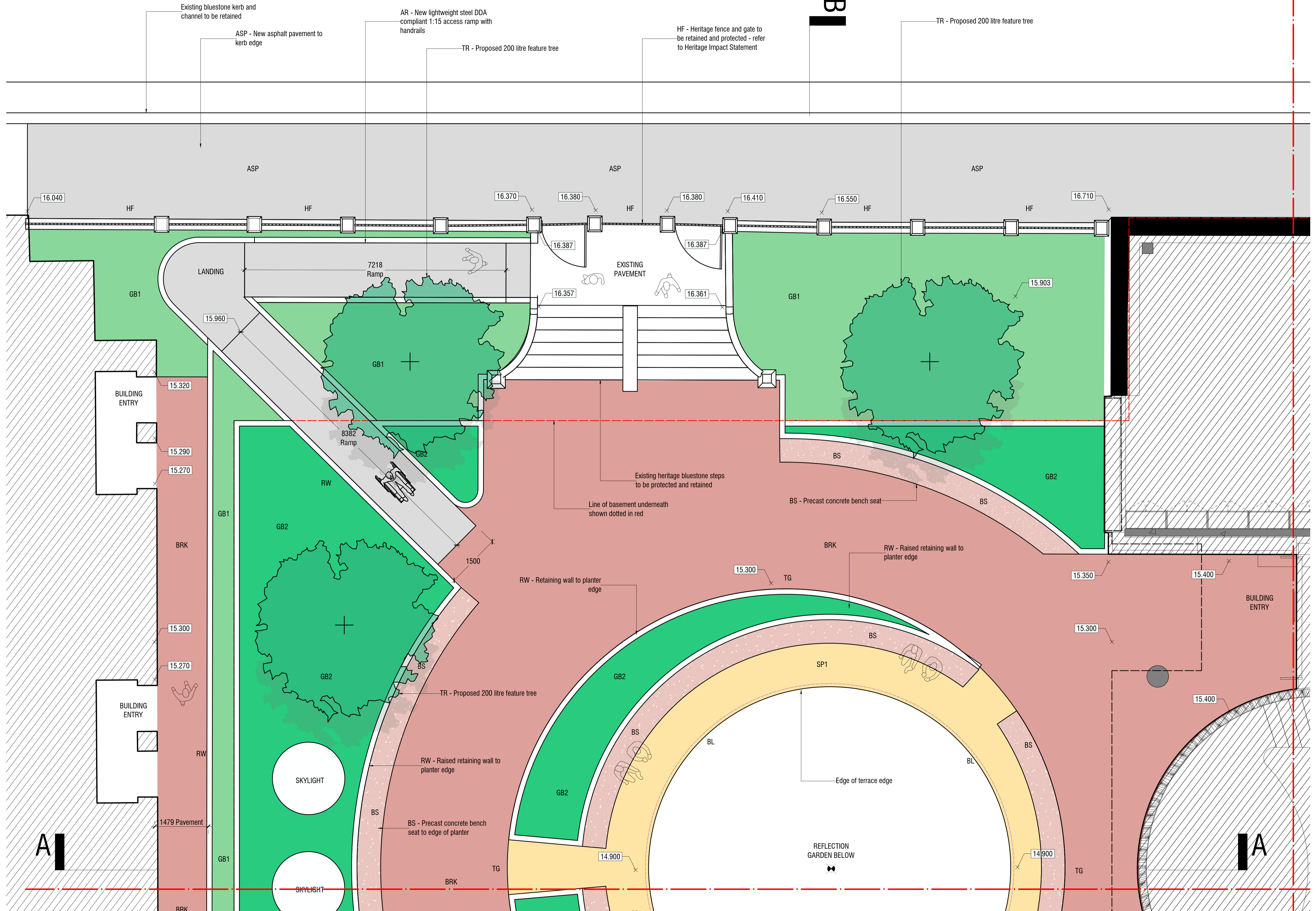
- ASP Asphalt Pavement
- AR Access Ramp
- HF Heritage Fence
- RW Stone Retaining Wall
- BS Precast Bench Seat
- BL Balustrade
- TG Trench Grate
- SP1 Stone Pavement
- SS Cut Stone Plinth
- ST Seating Plinth
- TR 200 Litre Tree

NOTES:

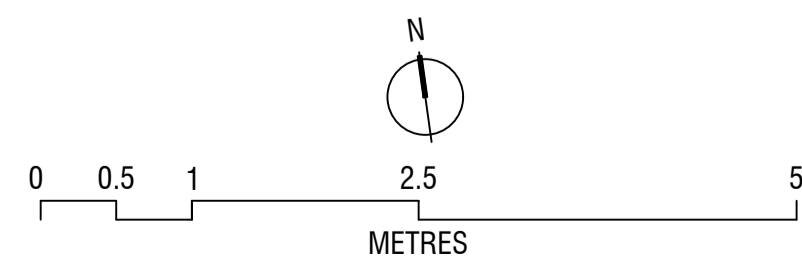
1. Proposed levels are indicative only subject to further investigations during Design Development.
2. Planting list for Chapel Quad to be determined after further consultation with the School's Grounds and Horticulture team.

ADVERTISED PLAN

This copied document to be made available for the sole purpose of enabling its consideration and review as part of a planning process under the Planning and Environment Act 1987. The document must not be used for any purpose which may breach any copyright



NO.	DATE:	DESCRIPTION:	BY:	CHK:
01	15.03.2023	Issued for Information - SD 50%	cs	sk
02	21.04.2023	Issued for information - SD 100%	cs	sk
03	19.05.2023	Issued for Town Planning	cs	sk



Project Design:
SITE | OFFICE
© Site Office Pty Ltd 18 Lincoln Street Brunswick East VIC 3057 Australia Ph 9384 6934 Web www.siteoffice.com.au

Client: MGS
 Date: 19.05.2023
 Drawing Scale: 1:50 (A1)

Drawing Title:
Landscape Detail Plan
 Ground G01 - Area 01
MGS CENTRE FOR HUMANITIES

Drawing Revision:
03
 Drawing Number:
LA110

ISSUED FOR TOWN PLANNING

MATERIALS LEGEND

- ASP
Asphalt Pavement
- BRK
Recycled Brick Pavement
- SP1
Stone Pavement
- GB1
Garden Bed on Ground
- GB2
Garden Bed On Structure
- BS
Precast Bench Seat
- RL
Indicative Finished Level



CODES

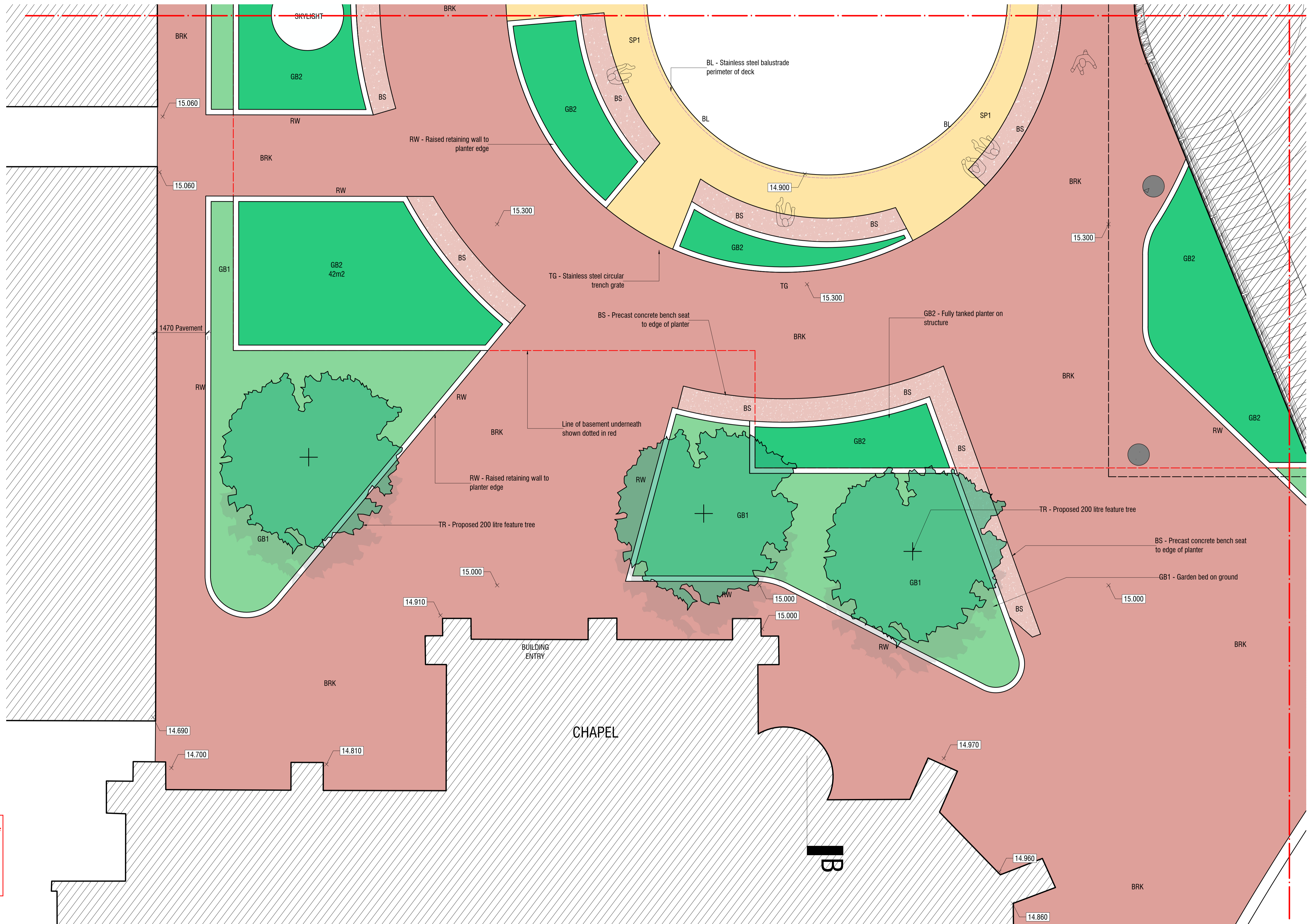
- ASP Asphalt Pavement
- AR Access Ramp
- HF Heritage Fence
- RW Stone Retaining Wall
- BS Precast Bench Seat
- BL Balustrade
- TG Trench Grate
- SP1 Stone Pavement
- SS Cut Stone Plinth
- ST Seating Plinth
- TR 200 Litre Tree

NOTES:

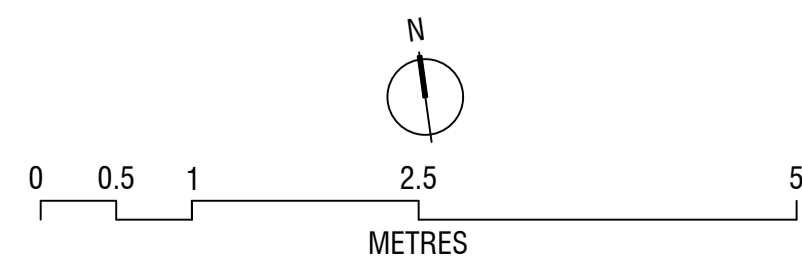
1. Proposed levels are indicative only subject to further investigations during Design Development.
2. Planting list for Chapel Quad to be determined after further consultation with the School's Grounds and Horticulture team.

ADVERTISED PLAN

This copied document to be made available for the sole purpose of enabling its consideration and review as part of a planning process under the Planning and Environment Act 1987. The document must not be used for any purpose which may breach any copyright



NO.	DATE:	DESCRIPTION:	BY:	CHK:
01	15.03.2023	Issued for Information - SD 50%	cs	sk
02	21.04.2023	Issued for information - SD 100%	cs	sk
03	19.05.2023	Issued for Town Planning	cs	sk



Project Design:

SITE | OFFICE

© Site Office Pty Ltd 18 Lincoln Street Brunswick East VIC 3057 Australia Ph 9384 6934 Web www.siteoffice.com.au

Client: MGS
Date: 19.05.2023
Drawing Scale: 1:50 (A1)

Drawing Title: Landscape Detail Plan
Ground G01 - Area 02

MGS CENTRE FOR HUMANITIES

Drawing Revision: 03
Drawing Number: LA111

ISSUED FOR TOWN PLANNING

DOMAIN ROAD

MATERIALS LEGEND

- ASP
Asphalt Pavement
- BRK
Recycled Brick Pavement
- SP1
Stone Pavement
- GB1
Garden Bed on Ground
- GB2
Garden Bed On Structure
- BS
Precast Bench Seat
- RL
Indicative Finished Level

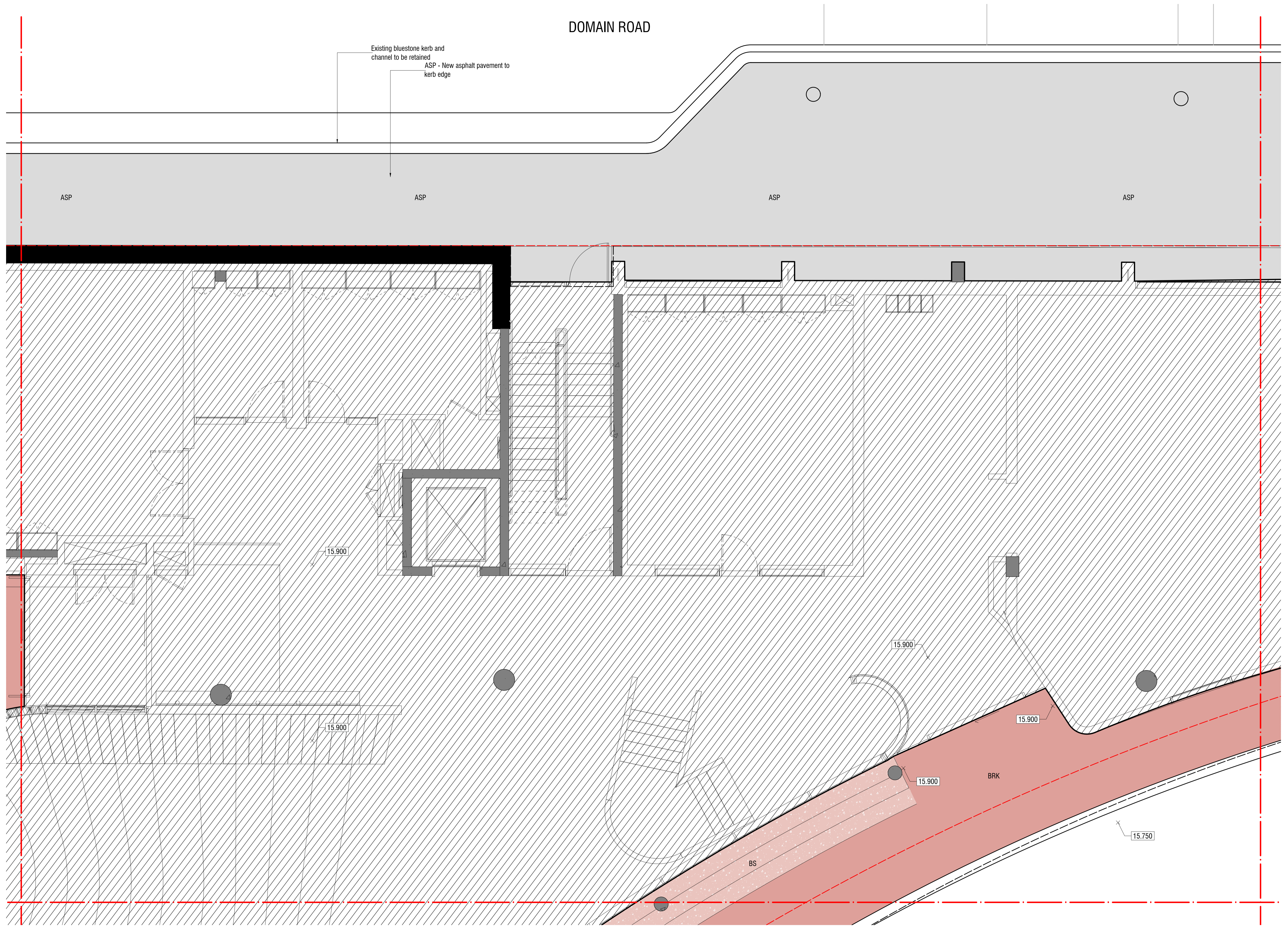
- Proposed Tree
Refer Planting Schedule
- Existing Tree
To be Retained

CODES

- ASP Asphalt Pavement
- AR Access Ramp
- HF Heritage Fence
- RW Stone Retaining Wall
- BS Precast Bench Seat
- BL Balustrade
- TG Trench Grate
- SP1 Stone Pavement
- SS Cut Stone Plinth
- ST Seating Plinth
- TR 200 Litre Tree

NOTES:

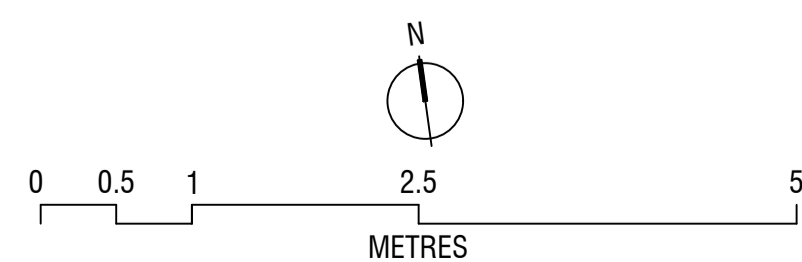
1. Proposed levels are indicative only subject to further investigations during Design Development.



ADVERTISED PLAN

This copied document to be made available for the sole purpose of enabling its consideration and review as part of a planning process under the Planning and Environment Act 1987. The document must not be used for any purpose which may breach any copyright

NO.	DATE:	DESCRIPTION:	BY:	CHK:
01	15.03.2023	Issued for Information -SD 50%	cs	sk
02	21.04.2023	Issued for information - SD 100%	cs	sk
03	19.05.2023	Issued for Town Planning	cs	sk



Project Design:
SITE | OFFICE
 © Site Office Pty Ltd 18 Lincoln Street Brunswick East VIC 3057 Australia Ph 9384 6934 Web www.siteoffice.com.au

Client: MGS
 Date: 19.05.2023
 Drawing Scale: 1:50 (A1)

Drawing Title:
Landscape Detail Plan
 Ground G01 - Area 03
MGS CENTRE FOR HUMANITIES

Drawing Revision:
03
 Drawing Number:
LA112

ISSUED FOR TOWN PLANNING

MATERIALS LEGEND

- ASP
Asphalt Pavement
- BRK
Recycled Brick Pavement
- SP1
Stone Pavement
- GB1
Garden Bed on Ground
- GB2
Garden Bed On Structure
- BS
Precast Bench Seat
- RL
Indicative Finished Level

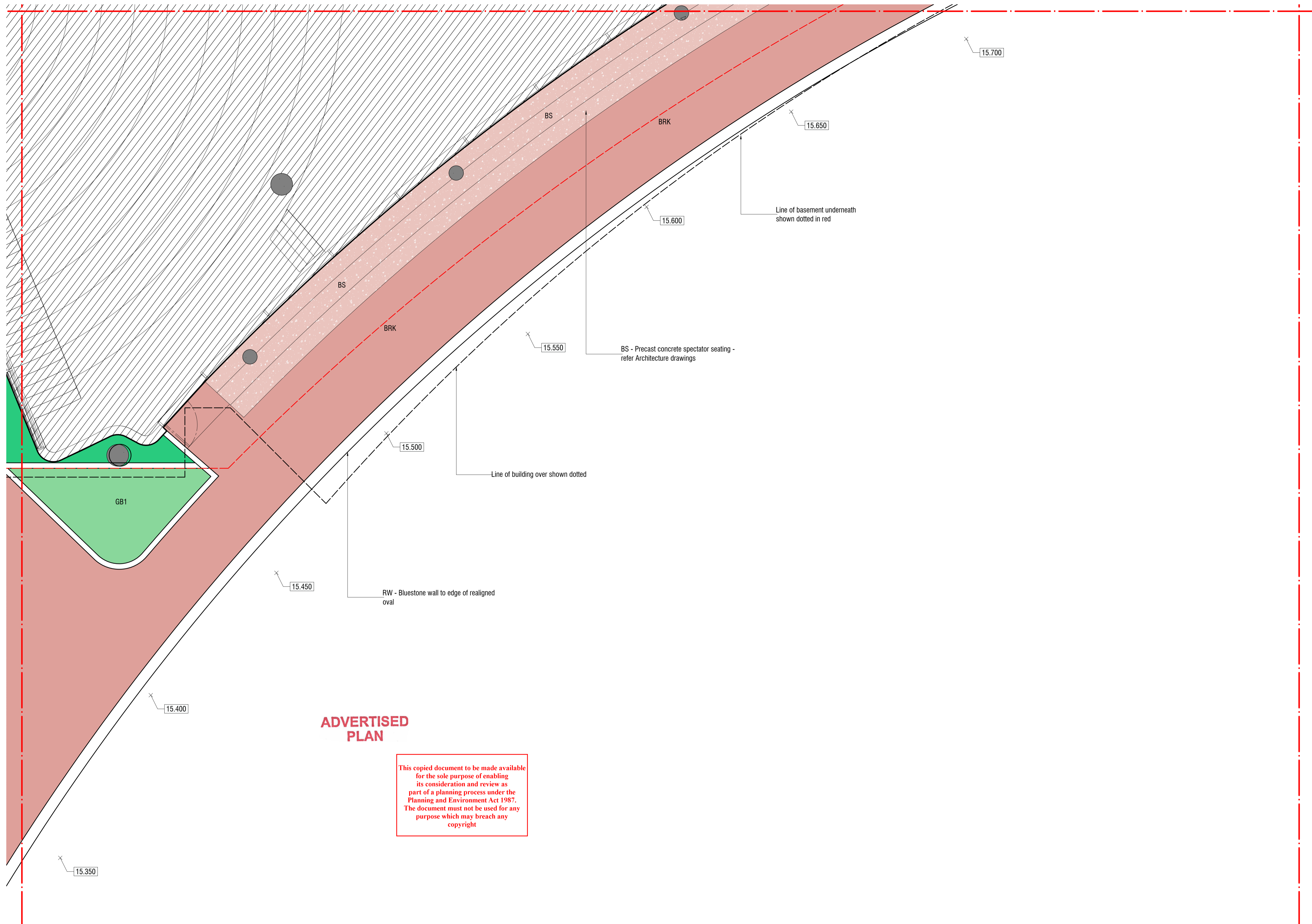
- Proposed Tree
Refer Planting Schedule
- Existing Tree
To be Retained

CODES

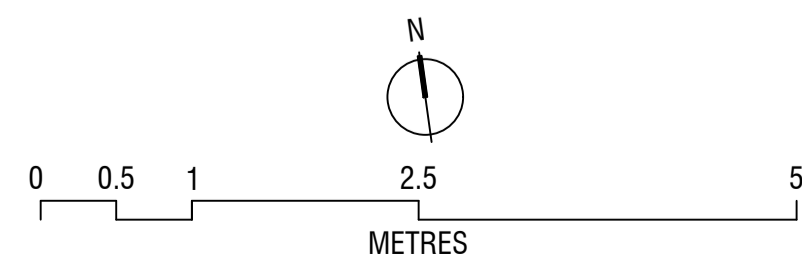
- ASP Asphalt Pavement
- AR Access Ramp
- HF Heritage Fence
- RW Stone Retaining Wall
- BS Precast Bench Seat
- BL Balustrade
- TG Trench Grate
- SP1 Stone Pavement
- SS Cut Stone Plinth
- ST Seating Plinth
- TR 200 Litre Tree

NOTES:

1. Proposed levels are indicative only subject to further investigations during Design Development.
2. Planting list for Chapel Quad to be determined after further consultation with the School's Grounds and Horticulture team.



NO.	DATE:	DESCRIPTION:	BY:	CHK:
01	15.03.2023	Issued for Information - SD 50%	cs	sk
02	21.04.2023	Issued for information - SD 100%	cs	sk
03	19.05.2023	Issued for Town Planning	cs	sk



Project Design:
SITE | OFFICE
 © Site Office Pty Ltd 18 Lincoln Street Brunswick East VIC 3057 Australia Ph 9384 6934 Web www.siteoffice.com.au

Client:	MGS
Date:	19.05.2023
Drawing Scale:	1:50 (A1)

Drawing Title:
ISSUED FOR TOWN PLANNING
 Landscape Detail Plan
 Ground G01 - Area 04
 MGS CENTRE FOR HUMANITIES

Drawing Revision:	03
Drawing Number:	LA113

DOMAIN ROAD

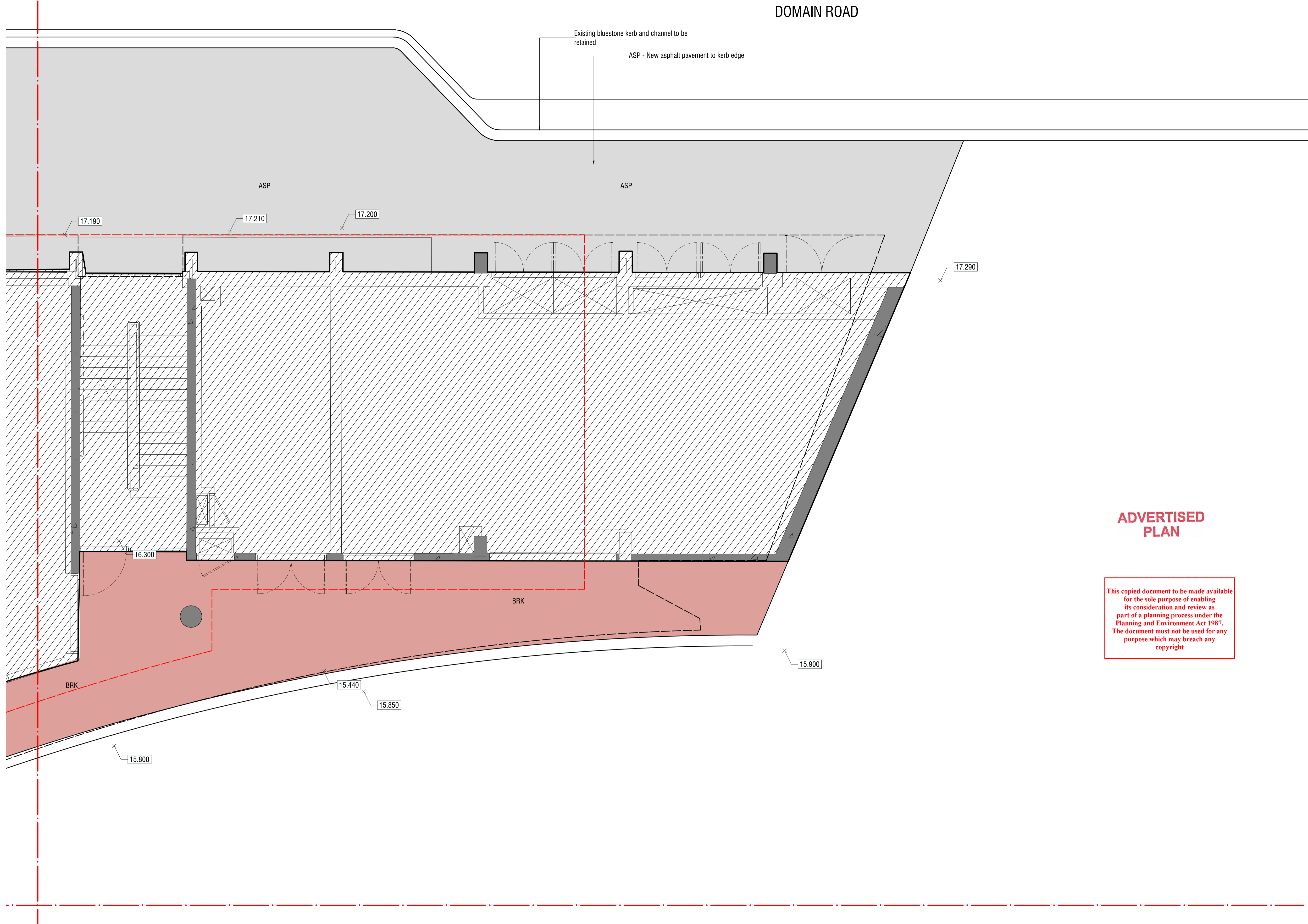
MATERIALS LEGEND

- ASP
Asphalt Pavement
- BRK
Recycled Brick Pavement
- SP1
Stone Pavement
- GB1
Garden Bed on Ground
- GB2
Garden Bed On Structure
- BS
Precast Bench Seat
- RL
Indicative Finished Level



- CODES
- ASP Asphalt Pavement
 - AR Access Ramp
 - HF Heritage Fence
 - RW Stone Retaining Wall
 - BS Precast Bench Seat
 - BL Balustrade
 - TG Trench Grate
 - SP1 Stone Pavement
 - SS Cut Stone Plinth
 - ST Seating Plinth
 - TR 200 Litre Tree

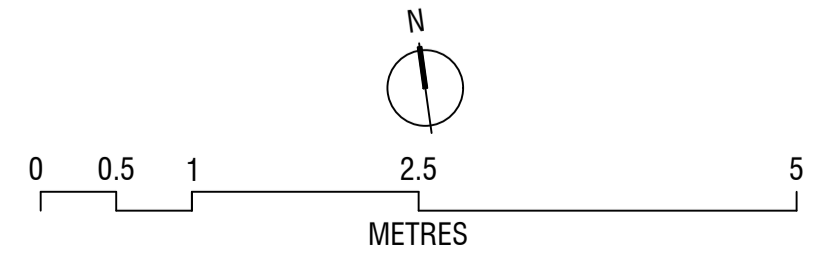
NOTES:
1. Proposed levels are indicative only subject to further investigations during Design Development.



ADVERTISED PLAN

This copied document to be made available for the sole purpose of enabling its consideration and review as part of a planning process under the Planning and Environment Act 1987. The document must not be used for any purpose which may breach any copyright

NO.	DATE:	DESCRIPTION:	BY:	CHK:
01	15.02.2023	Issued for Information - SD 50%	cs	sk
02	21.04.2023	Issued for information - SD 100%	cs	sk
03	19.05.2023	Issued for Town Planning	cs	sk



Project Design:

SITE | OFFICE

© Site Office Pty Ltd 18 Lincoln Street Brunswick East VIC 3057 Australia Ph 9384 6934 Web www.siteoffice.com.au

Client:	MGS
Date:	19.05.2023
Drawing Scale:	1:50 (A1)

Drawing Title:	Landscape Detail Plan Ground G01 - Area 05
MGS CENTRE FOR HUMANITIES	

Drawing Revision:	03
Drawing Number:	LA114

ISSUED FOR TOWN PLANNING

MATERIALS LEGEND

- ASP
Asphalt Pavement
- BRK
Recycled Brick Pavement
- SP1
Stone Pavement
- GB1
Garden Bed on Ground
- GB2
Garden Bed On Structure
- BS
Precast Bench Seat
- RL
Indicative Finished Level



CODES

- ASP Asphalt Pavement
- AR Access Ramp
- HF Heritage Fence
- RW Stone Retaining Wall
- BS Precast Bench Seat
- BL Balustrade
- TG Trench Grate
- SP1 Stone Pavement
- SS Cut Stone Plinth
- ST Seating Plinth
- TR 200 Litre Tree

NOTES:

1. Proposed levels are indicative only subject to further investigations during Design Development.

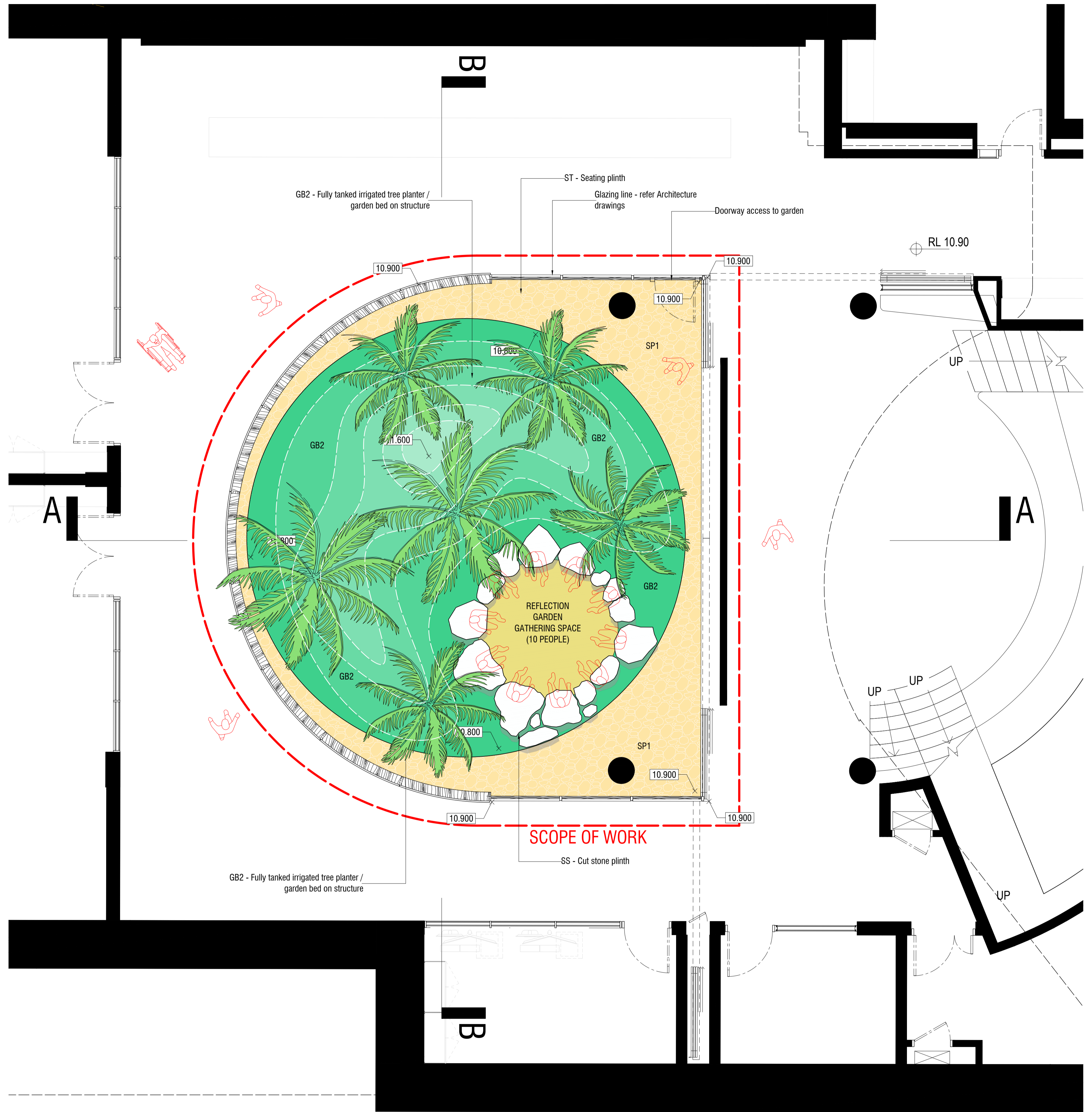
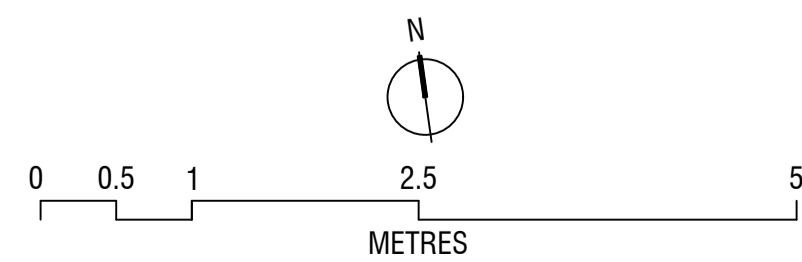
ADVERTISED PLAN

This copied document to be made available for the sole purpose of enabling its consideration and review as part of a planning process under the Planning and Environment Act 1987. The document must not be used for any purpose which may breach any copyright

REFLECTION GARDEN						
Indicative Planting Schedule						
CODE	BOTANICAL NAME	COMMON NAME	SIZE (PLANTING)	SIZE (MATURITY)	DENSITY	QUANTITY
Ca	Carex appressa	Tall Sedge	140mm pot	0.6m	6 plants per m2	tbc
Cp	Crinum pedunculatum	Swamp Lily	140mm pot	1m	6 plants per m2	tbc
Cy	Cyathea australis	Rough Tree-fern	300mm pot	4m	6 plants per m2	tbc
Ds	Dendrobium speciosum	Rock Orchid	140mm pot	0.5m	6 plants per m2	tbc
Dic	Dianella caerulea var. caerulea	Paroo Lily	140mm pot	0.6m	6 plants per m2	tbc
Dr	Dichondra repens	Kidney-weed	140mm pot		6 plants per m2	tbc
Da	Doodia australis	Common Rasp-Fern	140mm pot		6 plants per m2	tbc
Dab	Drosera aberrans	Scented sundew.	140mm pot		6 plants per m2	tbc
Db	Drosera binata	Fork-leaved Sundew	140mm pot		6 plants per m2	tbc
Ds	Drosera spatulata	Spoon leaved sundew.	140mm pot		6 plants per m2	tbc
Hg	Helmholtzia glaberrima	Stream Lily	140mm pot	2m	6 plants per m2	tbc
md	Meliccytus dentatus	Tree violet	140mm pot		6 plants per m2	tbc
Ml	Mentha laxiflora	Forest Mint	140mm pot		6 plants per m2	tbc
Mc	Molinera capitulata	Palm grass	140mm pot	0.7m	6 plants per m2	tbc
Pt	Pteris tremula	Tender Brake	140mm pot	0.6m	6 plants per m2	tbc
Pu	Pteris umbrosa	Jungle Brake	140mm pot	0.6m	6 plants per m2	tbc
Pn	Pterostylis nutans	Nodding Greenhood	140mm pot		6 plants per m2	tbc
Vh	Viola hederacea	Ivy-leaf Violet	140mm pot	0.1m	6 plants per m2	tbc

GENERAL PLANTING NOTES:
Plant species provides are indicative only and subject to further consultation with the School, as well as reviewed as part of Designing with Country approach.

NO.	DATE:	DESCRIPTION:	BY:	CHK:
01	15.03.2023	Issued for Information - SD 50%	cs	sk
02	21.04.2023	Issued for Information - SD 100%	cs	sk
03	19.05.2023	Issued for Town Planning	cs	sk
04	21.06.2023	Re-issued for Town Planning	cs	sk



Project Design:
SITE | OFFICE
© Site Office Pty Ltd 18 Lincoln Street Brunswick East VIC 3057 Australia Ph 9384 6934 Web www.siteoffice.com.au

Client: MGS
Date: 21.06.2023
Drawing Scale: 1:50 (A1)

Drawing Title:
Landscape Detail Plan
Basement B01 - Reflection Garden
MGS CENTRE FOR HUMANITIES

Drawing Revision:
4
Drawing Number:
LA115

ISSUED FOR TOWN PLANNING

MATERIALS LEGEND

- ASP
Asphalt Pavement
- BRK
Recycled Brick Pavement
- SP1
Stone Pavement
- GB1
Garden Bed on Ground
- GB2
Garden Bed On Structure
- BS
Precast Bench Seat
- RL
Indicative Finished Level



CODES

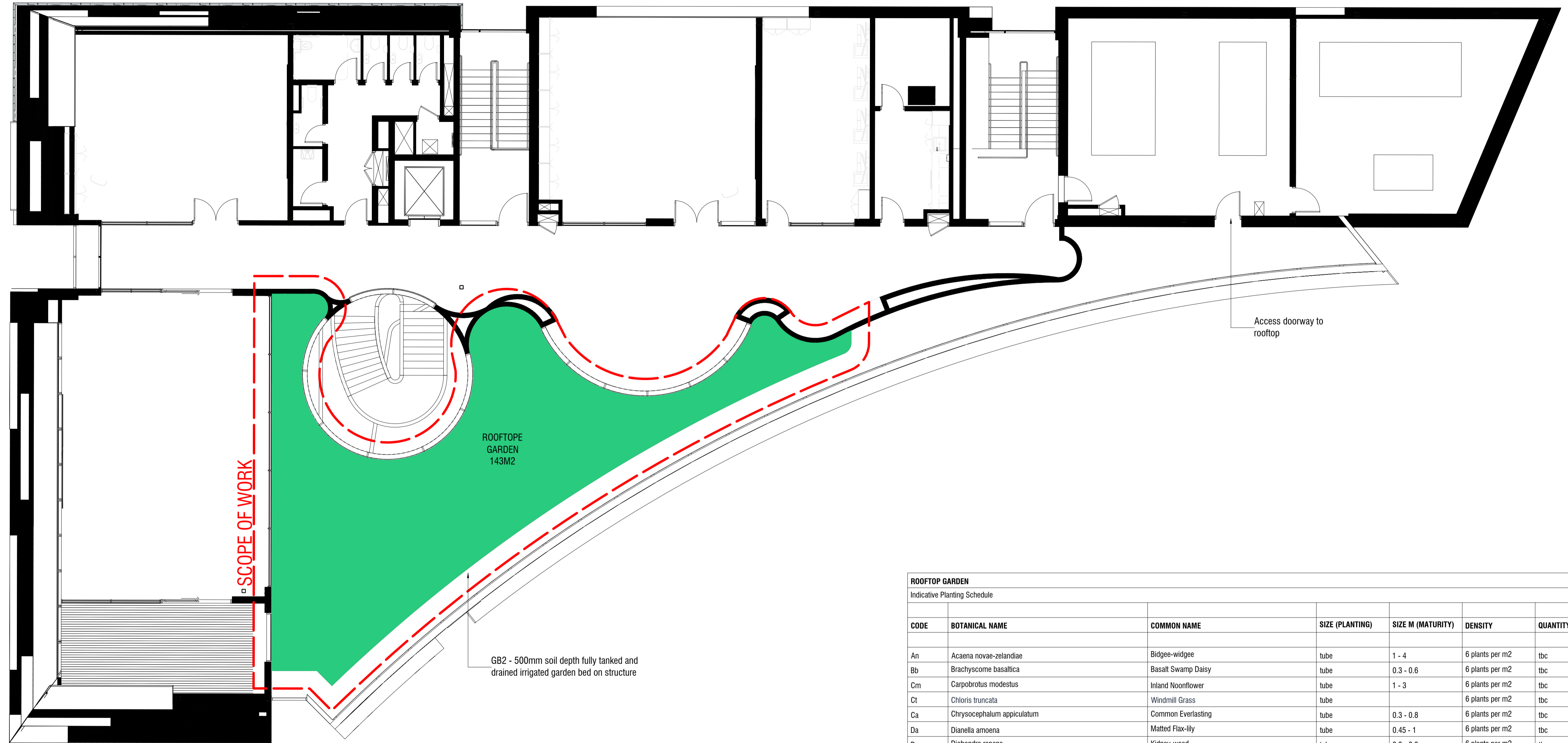
- ASP Asphalt Pavement
- AR Access Ramp
- HF Heritage Fence
- RW Stone Retaining Wall
- BS Precast Bench Seat
- BL Balustrade
- TG Trench Grate
- SP1 Stone Pavement
- SS Cut Stone Plinth
- ST Seating Plinth
- TR 200 Litre Tree

NOTES:

1. Proposed levels are indicative only subject to further investigations during Design Development.

ADVERTISED PLAN

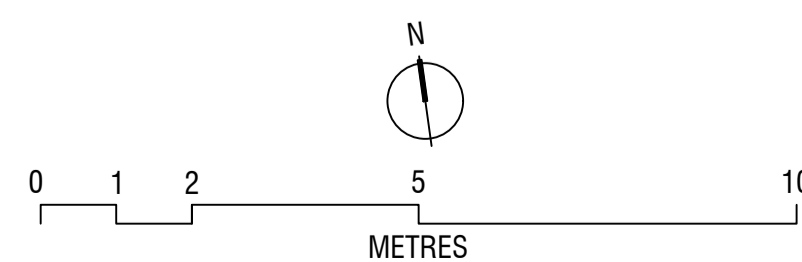
This copied document to be made available for the sole purpose of enabling its consideration and review as part of a planning process under the Planning and Environment Act 1987. The document must not be used for any purpose which may breach any copyright



ROOFTOP GARDEN						
Indicative Planting Schedule						
CODE	BOTANICAL NAME	COMMON NAME	SIZE (PLANTING)	SIZE M (MATURITY)	DENSITY	QUANTITY
An	<i>Acaena novae-zelandiae</i>	Bidgee-widgee	tube	1 - 4	6 plants per m2	tbc
Bb	<i>Brachycome basaltica</i>	Basalt Swamp Daisy	tube	0.3 - 0.6	6 plants per m2	tbc
Cm	<i>Carpobrotus modestus</i>	Inland Noonflower	tube	1 - 3	6 plants per m2	tbc
Ct	<i>Chloris truncata</i>	Windmill Grass	tube		6 plants per m2	tbc
Ca	<i>Chrysocephalum appiculatum</i>	Common Everlasting	tube	0.3 - 0.8	6 plants per m2	tbc
Da	<i>Dianella amoena</i>	Matted Flax-lily	tube	0.45 - 1	6 plants per m2	tbc
Dr	<i>Dichondra repens</i>	Kidney-weed	tube	0.3 - 0.3	6 plants per m2	tbc
En	<i>Einadia nutans</i>	Nodding or Climbing Saltbush	tube		6 plants per m2	tbc
Kp	<i>Kennedia prostrata</i>	Running Postman	tube		6 plants per m2	tbc
Ms	<i>Microlaena stipoides</i>	Weeping Grass	tube		6 plants per m2	tbc
Po	<i>Patersonia occidentalis</i>	long Purple flag	tube		6 plants per m2	tbc
Pa	<i>Pelargonium australe</i>	Austral Storks Bill	tube		6 plants per m2	tbc
Pj	<i>Podolepis jacobides</i>	Showy Podolepis	tube		6 plants per m2	tbc
Sb	<i>Scleranthus biflorus</i>	cushion-bush	tube		6 plants per m2	tbc
Sf	<i>Stipa flavescens</i>	Coast Spear Grass	tube		6 plants per m2	tbc
Si	<i>Swainsona lessertifolia</i>	Purple Swainson-pea	tube		6 plants per m2	tbc
Tt	<i>Themeda triandra</i>	Kangaroo Grass	tube		6 plants per m2	tbc
Vh	<i>Viola hederacea</i>	Native Violet	tube	0.3 - 0.3	6 plants per m2	tbc
Wc	<i>Wahlenbergia communis</i>	Tufted Bluebell	tube		6 plants per m2	tbc
Xv	<i>Xerochysum viscosum</i>	Sticky Everlasting	tube		6 plants per m2	tbc

GENERAL PLANTING NOTES:
Plant species provides are indicative only and subject to further consultation with the School, as well as reviewed as part of Designing with Country approach.

NO.	DATE:	DESCRIPTION:	BY:	CHK:
01	15.03.2023	Issued for Information - SD 50%	cs	sk
02	21.04.2023	Issued for information - SD 100%	cs	sk
03	19.05.2023	Issued for Town Planning	cs	sk



Project Design:
SITE | OFFICE
© Site Office Pty Ltd 18 Lincoln Street Brunswick East VIC 3057 Australia Ph 9384 6934 Web www.siteoffice.com.au

Client: MGS
Date: 19.05.2023
Drawing Scale: 1:100 (A1)

Drawing Title:
Landscape Plan
Roof L03
MGS CENTRE FOR HUMANITIES

Drawing Revision:
03
Drawing Number:
LA116

ISSUED FOR TOWN PLANNING

MATERIALS LEGEND

- ASP
Asphalt Pavement
- BRK
Recycled Brick Pavement
- SP1
Stone Pavement
- GB1
Garden Bed on Ground
- GB2
Garden Bed On Structure
- BS
Precast Bench Seat
- RL
Indicative Finished Level

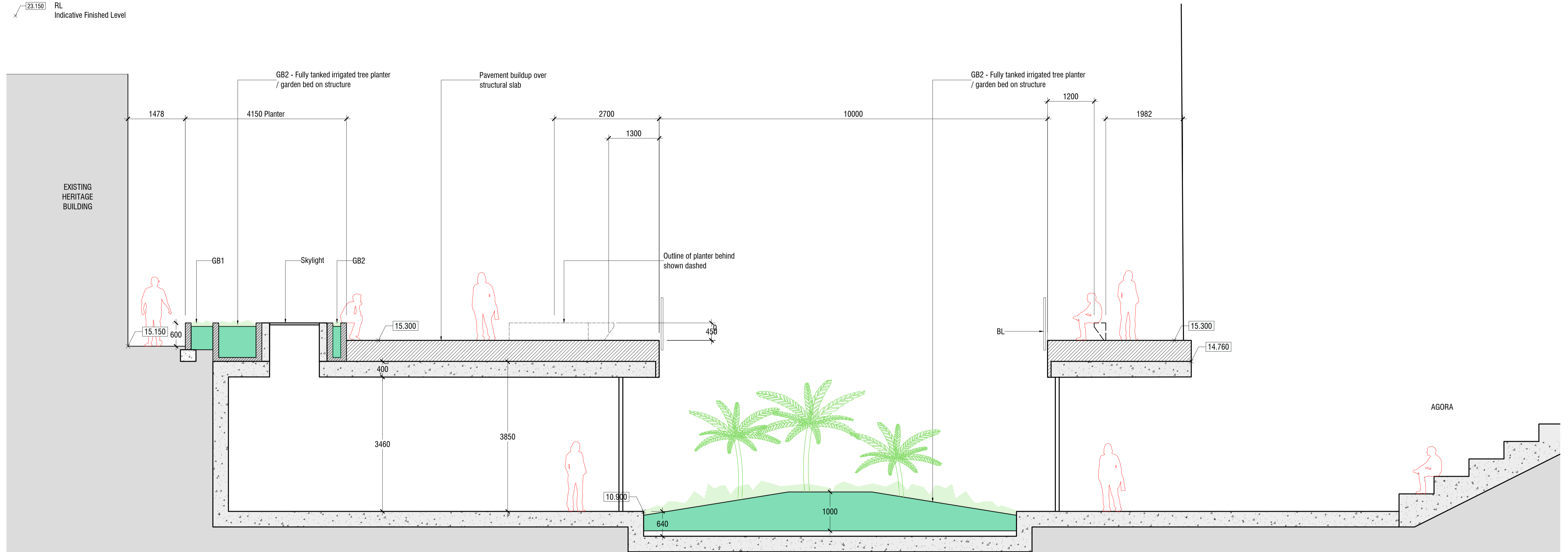
- ASP Asphalt Pavement
- AR Access Ramp
- HF Heritage Fence
- RW Stone Retaining Wall
- BS Precast Bench Seat
- BL Balustrade
- TG Trench Grate
- SP1 Stone Pavement
- SS Cut Stone Plinth
- ST Seating Plinth
- TR 200 Litre Tree

NOTES:

1. Proposed levels are indicative only subject to further investigations during Design Development.
2. Planting list for Chapel Quad to be determined after further consultation with the School's Grounds and Horticulture team.

ADVERTISED PLAN

This copied document to be made available for the sole purpose of enabling its consideration and review as part of a planning process under the Planning and Environment Act 1987. The document must not be used for any purpose which may breach any copyright



01 SECTION AA - PLANTER PARTIALLY RECESSED
LA200 1:50 (A1)

ISSUED FOR TOWN PLANNING

NO.	DATE:	DESCRIPTION:	BY:	CHK:
01	15.03.2023	Issued for Information - SD 50%	cs	sk
02	21.04.2023	Issued for information - SD 100%	cs	sk
03	19.05.2023	Issued for Town Planning	cs	sk

Project Design:

SITE | OFFICE

© Site Office Pty Ltd 18 Lincoln Street Brunswick East VIC 3057 Australia Ph 9384 6934 Web www.siteoffice.com.au

Client:	MGS
Date:	19.05.2023
Drawing Scale:	1:50 (A1)

Drawing Title:

Landscape Sections
Section AA

MGS CENTRE FOR HUMANITIES

Drawing Revision:	03
Drawing Number:	LA200

MATERIALS LEGEND

- ASP
Asphalt Pavement
- BRK
Recycled Brick Pavement
- SP1
Stone Pavement
- GB1
Garden Bed on Ground
- GB2
Garden Bed On Structure
- BS
Precast Bench Seat
- RL
Indicative Finished Level

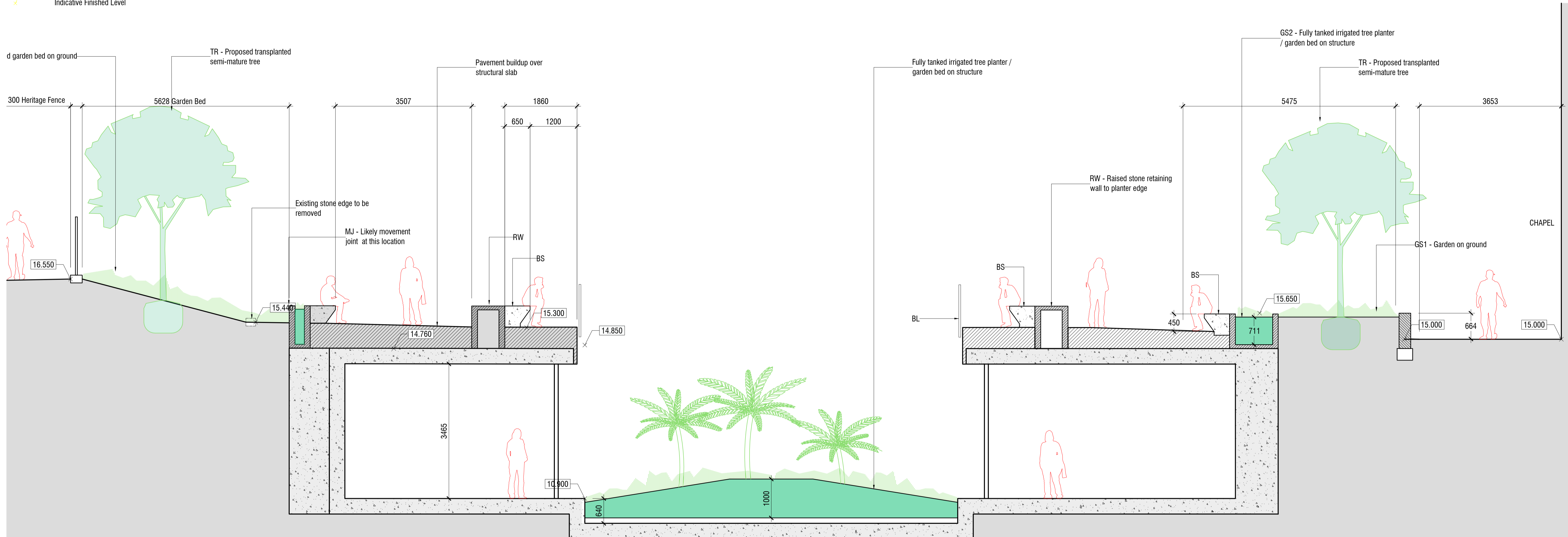
- AR Access Ramp
- HF Heritage Fence
- RW Stone Retaining Wall
- BS Precast Bench Seat
- BL Balustrade
- TG Trench Grate
- SP1 Stone Pavement
- SS Cut Stone Plinth
- ST Seating Plinth
- TR 200 Litre Tree

NOTES:

1. Proposed levels are indicative only subject to further investigations during Design Development.
2. Planting list for Chapel Quad to be determined after further consultation with the School's Grounds and Horticulture team.

ADVERTISED PLAN

This copied document to be made available for the sole purpose of enabling its consideration and review as part of a planning process under the Planning and Environment Act 1987. The document must not be used for any purpose which may breach any copyright



01 SECTION BB - CHAPEL QUAD
LA201 1:50 (A1)

NO.	DATE:	DESCRIPTION:	BY:	CHK:
01	15.03.2023	Issued for Information - SD 50%	cs	sk
02	21.04.2023	Issued for information - SD 100%	cs	sk
03	19.05.2023	Issued for Town Planning	cs	sk

Project Design:
SITE | OFFICE
 © Site Office Pty Ltd 18 Lincoln Street Brunswick East VIC 3057 Australia Ph 9384 6934 Web www.siteoffice.com.au

Client:	MGS
Date:	19.05.2023
Drawing Scale:	1:50 (A1)

Drawing Title:
 Landscape Sections
 Section BB
MGS CENTRE FOR HUMANITIES

Drawing Revision:	03
Drawing Number:	LA201

ISSUED FOR TOWN PLANNING