

## Appendix F. Native vegetation removal report

---

**RECEIVED**  
**Department of Environment, Land, Water  
and Planning**  
**08/06/2024**

**ADVERTISED  
PLAN**

This report provides information to support an application to remove, destroy or lop native vegetation in accordance with the *Guidelines for the removal, destruction or lopping of native vegetation*. The report **is not an assessment by DELWP** of the proposed native vegetation removal. Native vegetation information and offset requirements have been determined using spatial data provided by the applicant or their consultant.

Date of issue: 29/05/2024  
Time of issue: 11:19 am

## ADVERTISED PLAN

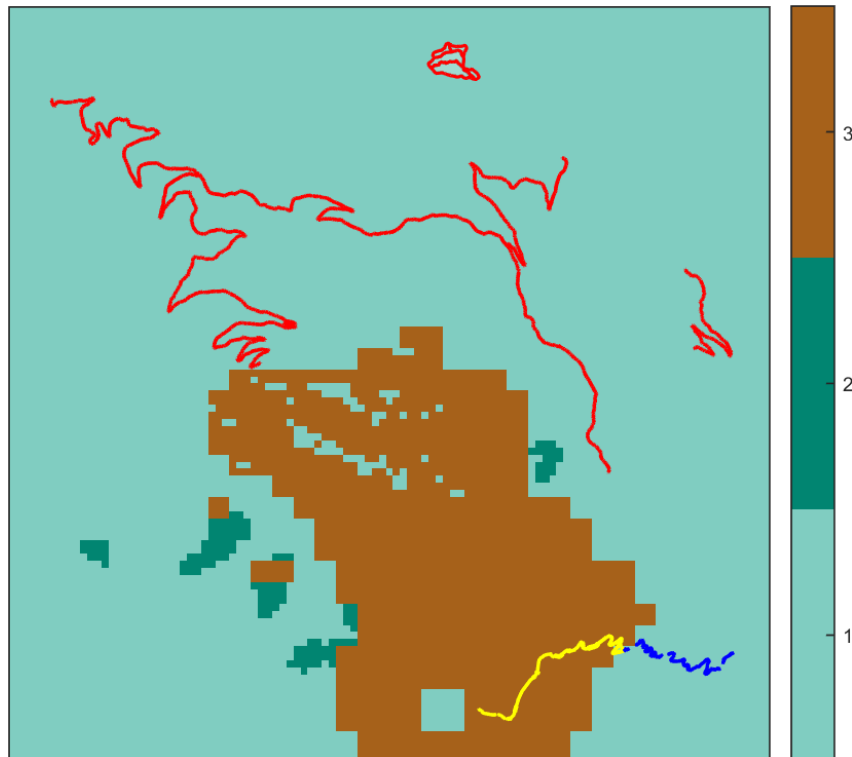
Report ID: BIO\_2024\_042

Project ID 38638\_veg\_clearing\_20240528

### Assessment pathway

Assessment pathway	Detailed Assessment Pathway
Extent including past and proposed	3.338 ha
Extent of past removal	2.963 ha
Extent of proposed removal	0.375 ha
No. Large trees proposed to be removed	0
Location category of proposed removal	Location 3 The native vegetation is in an area where the removal of less than 0.5 hectares could have a significant impact on habitat for one or more rare or threatened species.

#### 1. Location map



**RECEIVED**  
Department of Environment, Land, Water  
and Planning  
  
08/06/2024



Environment,  
Land, Water  
and Planning

## Offset requirements if a permit is granted

Any approval granted will include a condition to obtain an offset that meets the following requirements:

<b>General offset amount<sup>1</sup></b>	0.265 general habitat units
Vicinity	North East Catchment Management Authority (CMA) or Falls Creek Alpine Resort (Unincorporated) Council
Minimum strategic biodiversity value score <sup>2</sup>	0.780
Large trees	0 large trees

NB: values within tables in this document may not add to the totals shown above due to rounding

Appendix 1 includes information about the native vegetation to be removed

Appendix 2 includes information about the rare or threatened species mapped at the site.

Appendix 3 includes maps showing native vegetation to be removed and extracts of relevant species habitat importance maps

**RECEIVED**  
**Department of Environment, Land, Water  
and Planning**  
**08/06/2024**

**ADVERTISED  
PLAN**

<sup>1</sup> The general offset amount required is the sum of all general habitat units in Appendix 1.

<sup>2</sup> Minimum strategic biodiversity score is 80 per cent of the weighted average score across habitat zones where a general offset is required

## Next steps

Any proposal to remove native vegetation must meet the application requirements of the Detailed Assessment Pathway and it will be assessed under the Detailed Assessment Pathway.

If you wish to remove the mapped native vegetation you are required to apply for a permit from your local council. Council will refer your application to DELWP for assessment, as required. **This report is not a referral assessment by DELWP.**

This *Native vegetation removal report* must be submitted with your application for a permit to remove, destroy or lop native vegetation.

Refer to the *Guidelines for the removal, destruction or lopping of native vegetation* (the Guidelines) for a full list of application requirements. This report provides information that meets the following application requirements:

- The assessment pathway and reason for the assessment pathway
- A description of the native vegetation to be removed (partly met)
- Maps showing the native vegetation and property (partly met)
- Information about the impacts on rare or threatened species.
- The offset requirements determined in accordance with section 5 of the Guidelines that apply if approval is granted to remove native vegetation.

Additional application requirements must be met including:

- Topographical and land information
- Recent dated photographs
- Details of past native vegetation removal
- An avoid and minimise statement
- A copy of any Property Vegetation Plan that applies
- A defensible space statement as applicable
- A statement about the Native Vegetation Precinct Plan as applicable
- A site assessment report including a habitat hectare assessment of any patches of native vegetation and details of trees
- An offset statement that explains that an offset has been identified and how it will be secured.

**RECEIVED**  
**Department of Environment, Land, Water  
and Planning**

**08/06/2024**

© The State of Victoria Department of Environment, Land, Water and Planning Melbourne 2024

This work is licensed under a Creative Commons Attribution 4.0 International licence. You are free to re-use the work under that licence, on the condition that you credit the State of Victoria as author. The licence does not apply to any images, photographs or branding, including the Victorian Coat of Arms, the Victorian Government logo and the Department of Environment, Land, Water and Planning logo. To view a copy of this licence, visit <http://creativecommons.org/licenses/by/3.0/au/deed.en>

Authorised by the Victorian Government, 8 Nicholson Street, East Melbourne.

For more information contact the DELWP Customer Service Centre 136 186

[www.delwp.vic.gov.au](http://www.delwp.vic.gov.au)

### Disclaimer

This publication may be of assistance to you but the State of Victoria and its employees do not guarantee that the publication is without flaw of any kind or is wholly appropriate for your particular purposes and therefore disclaims all liability for any error, loss or other consequence which may arise from you relying on any information in this publication.

Obtaining this publication does not guarantee that an application will meet the requirements of Clauses 52.16 or 52.17 of the Victoria Planning Provisions and Victorian planning schemes or that a permit to remove native vegetation will be granted.

Notwithstanding anything else contained in this publication, you must ensure that you comply with all relevant laws, legislation, awards or orders and that you obtain and comply with all permits, approvals and the like that affect, are applicable or are necessary to undertake any action to remove, lop or destroy or otherwise deal with any native vegetation or that apply to matters within the scope of Clauses 52.16 or 52.17 of the Victoria Planning Provisions and Victorian planning schemes.

**ADVERTISED  
PLAN**

## Appendix 1: Description of native vegetation to be removed

The species-general offset test was applied to your proposal. This test determines if the proposed removal of native vegetation has a proportional impact on any rare or threatened species habitats above the species offset threshold. The threshold is set at 0.005 per cent of the mapped habitat value for a species. When the proportional impact is above the species offset threshold a species offset is required. This test is done for all species mapped at the site. Multiple species offsets will be required if the species offset threshold is exceeded for multiple species.

Where a zone requires species offset(s), the species habitat units for each species in that zone is calculated by the following equation in accordance with the Guidelines:

$$\text{Species habitat units} = \text{extent} \times \text{condition} \times \text{species landscape factor} \times 2, \text{ where the species landscape factor} = 0.5 + (\text{habitat importance score}/2)$$

The species offset amount(s) required is the sum of all species habitat units per zone

Where a zone does not require a species offset, the general habitat units in that zone is calculated by the following equation in accordance with the Guidelines:

$$\text{General habitat units} = \text{extent} \times \text{condition} \times \text{general landscape factor} \times 1.5, \text{ where the general landscape factor} = 0.5 + (\text{strategic biodiversity value score}/2)$$

The general offset amount required is the sum of all general habitat units per zone.

ADVERTISED  
PLAN

### Native vegetation to be removed

Information provided by or on behalf of the applicant in a GIS file							Information calculated by EnSym					
Zone	Type	BioEVC	BioEVC conservation status	Large tree(s)	Partial removal	Condition score	Polygon Extent	Extent without overlap	SBV score	HI score	Habitat units	Offset type
3-A	Patch	valp0042	Rare	0	no	0.560	0.010	0.010	0.990		0.009	General
5-A	Patch	valp0043	Least Concern	0	yes	0.175	0.004	0.004	0.980		0.001	General
6-A	Patch	valp0043	Least Concern	0	yes	0.360	0.052	0.052	0.970		0.028	General
7-A	Patch	valp0043	Least Concern	0	yes	0.285	0.003	0.003	0.970		0.001	General
4-A	Patch	valp0210	Endangered	0	no	0.730	0.002	0.002	0.980		0.002	General
1-A	Patch	valp1004	Rare	0	no	0.630	0.009	0.009	0.990		0.009	General
1-C	Patch	valp1004	Rare	0	no	0.630	0.028	0.028	0.990		0.027	General
1-D	Patch	valp1004	Rare	0	no	0.630	0.053	0.053	0.996		0.050	General
1-E	Patch	valp1004	Rare	0	no	0.630	0.001	0.001	0.990		0.001	General
1-F	Patch	valp1004	Rare	0	no	0.630	0.002	0.002	0.990		0.002	General
3-B	Patch	valp0042	Rare	0	no	0.560	0.104	0.104	0.980		0.086	General

Information provided by or on behalf of the applicant in a GIS file							Information calculated by EnSym					
Zone	Type	BioEVC	BioEVC conservation status	Large tree(s)	Partial removal	Condition score	Polygon Extent	Extent without overlap	SBV score	HI score	Habitat units	Offset type
3-C	Patch	valp0042	Rare	0	no	0.560	0.009	0.009	0.982		0.008	General
3-D	Patch	valp0042	Rare	0	no	0.560	0.008	0.008	0.980		0.007	General
7-B	Patch	valp0043	Least Concern	0	yes	0.285	0.017	0.017	0.939		0.007	General
7-C	Patch	valp0043	Least Concern	0	yes	0.285	0.006	0.006	0.970		0.002	General
7-D	Patch	valp0043	Least Concern	0	yes	0.285	0.016	0.016	0.970		0.007	General
8-A	Patch	valp0043	Least Concern	0	yes	0.235	0.022	0.022	0.930		0.008	General
8-B	Patch	valp0043	Least Concern	0	yes	0.235	0.011	0.011	0.930		0.004	General
8-C	Patch	valp0043	Least Concern	0	yes	0.235	0.002	0.002	0.970		0.001	General
8-D	Patch	valp0043	Least Concern	0	yes	0.235	0.003	0.003	0.970		0.001	General
8-E	Patch	valp0043	Least Concern	0	yes	0.235	0.006	0.006	0.970		0.002	General
8-F	Patch	valp0043	Least Concern	0	yes	0.235	0.001	0.001	0.970		0.000	General
1-B	Patch	valp1004	Rare	0	no	0.630	0.004	0.004	0.980		0.004	General
1-G	Patch	valp1004	Rare	0	no	0.630	0.000	0.000	0.980		0.000	General

**ADVERTISED  
PLAN**

**RECEIVED**  
**Department of Environment, Land, Water  
and Planning**  
  
**08/06/2024**

08/06/2024

## Appendix 2: Information about impacts to rare or threatened species' habitats on site

This table lists all rare or threatened species' habitats mapped at the site.

Species common name	Species scientific name	Species number	Conservation status	Group	Habitat impacted	% habitat value affected
Bogong Sally	<i>Eucalyptus pauciflora subsp. hedraia</i>	504746	Rare	Dispersed	Habitat importance map	0.0040
Shining Westringia	<i>Westringia lucida</i>	504062	Vulnerable	Dispersed	Habitat importance map	0.0030
Spreading Clubmoss	<i>Lycopodium scariosum</i>	502082	Rare	Dispersed	Habitat importance map	0.0024
Sky Lily	<i>Herpolirion novae-zelandiae</i>	501658	Rare	Dispersed	Habitat importance map	0.0024
Alpine Tuft-rush	<i>Oreobolus pumilio subsp. pumilio</i>	502357	Rare	Dispersed	Habitat importance map	0.0021
Parantennaria	<i>Parantennaria uniceps</i>	502417	Vulnerable	Dispersed	Habitat importance map	0.0021
Allied Bent-grass	<i>Deyeuxia affinis</i>	501009	Endangered	Dispersed	Habitat importance map	0.0020
Alpine Holy-grass	<i>Hierochloe submutica</i>	501689	Vulnerable	Dispersed	Habitat importance map	0.0020
Snow-wort	<i>Abrotanella nivigena</i>	500001	Vulnerable	Dispersed	Habitat importance map	0.0020
Alpine Trachymene	<i>Trachymene humilis subsp. breviscapa</i>	505003	Rare	Dispersed	Habitat importance map	0.0019
Star Sedge	<i>Carex echinata</i>	500637	Vulnerable	Dispersed	Habitat importance map	0.0019
Felted Buttercup	<i>Ranunculus muelleri</i>	502896	Vulnerable	Dispersed	Habitat importance map	0.0019
Alpine Everlasting	<i>Ozothamnus alpinus</i>	501605	Rare	Dispersed	Habitat importance map	0.0019
Small Star-plantain	<i>Plantago glacialis</i>	502559	Vulnerable	Dispersed	Habitat importance map	0.0018
Carpet Heath	<i>Pentachondra pumila</i>	502454	Rare	Dispersed	Habitat importance map	0.0018
Thick Eyebright	<i>Euphrasia crassiuscula subsp. glandulifera</i>	504475	Vulnerable	Dispersed	Habitat importance map	0.0018
Alpine Swan Greenhood	<i>Pterostylis crassicaulis</i>	505626	Rare	Dispersed	Habitat importance map	0.0018
Cushion Rush	<i>Juncus antarcticus</i>	501804	Vulnerable	Dispersed	Habitat importance map	0.0018

# ADVERTISED PLAN

Silver Snow-daisy	<i>Celmisia tomentella</i>	504637	Rare	Dispersed	Habitat importance map ; special site	0.0018
Snow Heath	<i>Epacris petrophila</i>	501170	Rare	Dispersed	Habitat importance map	0.0018
Bogong Daisy-bush	<i>Olearia frostii</i>	502306	Rare	Dispersed	Habitat importance map	0.0018
Broad-leaf Flower-rush	<i>Carpha nivicola</i>	500653	Rare	Dispersed	Habitat importance map	0.0018
Alpine Sundew	<i>Drosera arcturi</i>	501101	Rare	Dispersed	Habitat importance map	0.0017
Reddish Bog-heath	<i>Epacris glacialis</i>	501164	Rare	Dispersed	Habitat importance map	0.0017
Rusty Daisy-bush	<i>Olearia brevipedunculata</i>	504782	Rare	Dispersed	Habitat importance map ; special site	0.0017
Wire-head Sedge	<i>Carex cephalotes</i>	500631	Vulnerable	Dispersed	Habitat importance map	0.0017
Alpine Tree Frog	<i>Litoria verreauxii alpina</i>	63907	Critically endangered	Dispersed	Habitat importance map	0.0017
Bogong Eyebright	<i>Euphrasia eichleri</i>	501340	Vulnerable	Dispersed	Habitat importance map	0.0017
Crimson Billy-buttons	<i>Craspedia crocata</i>	504645	Rare	Dispersed	Habitat importance map	0.0017
Southern Sheep-grass	<i>Rytidosperma australe</i>	501242	Endangered	Dispersed	Habitat importance map	0.0017
Alpine Marsh-marigold	<i>Psychrophila introloba</i>	500601	Rare	Dispersed	Habitat importance map	0.0017
White Billy-buttons	<i>Craspedia alba</i>	500856	Vulnerable	Dispersed	Habitat importance map	0.0017
Thick Eyebright	<i>Euphrasia crassiuscula subsp. eglandulosa</i>	504474	Rare	Dispersed	Habitat importance map	0.0017
Slender Woodrush	<i>Luzula atrata</i>	502066	Vulnerable	Dispersed	Habitat importance map	0.0017
Guthega Skink	<i>Liopholis guthega</i>	12432	Critically endangered	Dispersed	Habitat importance map	0.0016
Mountain Pygmy Possum	<i>Burramys parvus</i>	11156	Critically endangered	Dispersed	Habitat importance map	0.0016
Dwarf Sedge	<i>Carex paupera</i>	500646	Vulnerable	Dispersed	Habitat importance map	0.0016
Compact Hook-sedge	<i>Carex austrocompacta</i>	505030	Vulnerable	Dispersed	Habitat importance map	0.0016
Mountain Daisy	<i>Brachyscome foliosa</i>	500479	Vulnerable	Dispersed	Habitat importance map	0.0016
Turquoise Coprosma	<i>Coprosma moorei</i>	500818	Rare	Dispersed	Habitat importance map	0.0016

RECEIVED  
 Department of Environment, Land, Water  
 and Planning  
 08/06/2024



# ADVERTISED PLAN

Bog Billy-buttons	<i>Craspedia lamicola</i>	505935	Vulnerable	Dispersed	Habitat importance map	0.0016
Thick Eyebright	<i>Euphrasia crassiuscula</i> subsp. <i>crassiuscula</i>	504473	Rare	Dispersed	Habitat importance map	0.0016
Alpine Wattle	<i>Acacia alpina</i>	500009	Rare	Dispersed	Habitat importance map	0.0016
Alpine Stork's-bill	<i>Pelargonium helmsii</i>	502445	Vulnerable	Dispersed	Habitat importance map	0.0016
Snow Beard-heath	<i>Acrothamnus montanus</i>	501985	Rare	Dispersed	Habitat importance map	0.0015
Alpine Stackhousia	<i>Stackhousia pulvinaris</i>	503245	Rare	Dispersed	Habitat importance map	0.0015
Baw Baw Daisy	<i>Brachyscome obovata</i>	500468	Rare	Dispersed	Habitat importance map	0.0015
Silky Snow-daisy	<i>Celmisia sericophylla</i>	500693	Vulnerable	Dispersed	Habitat importance map	0.0015
Snow Coprosma	<i>Coprosma nivalis</i>	500820	Rare	Dispersed	Habitat importance map	0.0015
Alpine Sunray	<i>Leucochrysum alpinum</i>	504582	Rare	Dispersed	Habitat importance map	0.0015
Branched Caraway	<i>Oreomyrrhis brevipes</i>	502359	Vulnerable	Dispersed	Habitat importance map	0.0014
Snowy Everlasting	<i>Coronidium waddelliae</i>	504588	Rare	Dispersed	Habitat importance map	0.0014
Gunn's Alpine Buttercup	<i>Ranunculus gunnianus</i>	502892	Rare	Dispersed	Habitat importance map	0.0014
Silver Ewartia	<i>Ewartia nubigena</i>	501348	Rare	Dispersed	Habitat importance map	0.0014
Tasmanian Bladderwort	<i>Utricularia monanthos</i>	503481	Vulnerable	Dispersed	Habitat importance map	0.0014
Alpine Pennywort	<i>Schizeilema fragoseum</i>	503032	Vulnerable	Dispersed	Habitat importance map	0.0014
Alpine Blown-grass	<i>Lachnagrostis meionectes</i>	500156	Rare	Dispersed	Habitat importance map	0.0014
Short Sedge	<i>Carex canescens</i>	500633	Rare	Dispersed	Habitat importance map	0.0014
Alpine She-oak Skink	<i>Cyclodomorphus praealtus</i>	12987	Critically endangered	Dispersed	Habitat importance map	0.0014
Carpet Snow-daisy	<i>Celmisia costiniana</i>	504638	Rare	Dispersed	Habitat importance map	0.0013
Sharp-leaf Woodrush	<i>Luzula acutifolia</i> subsp. <i>acutifolia</i>	502064	Rare	Dispersed	Habitat importance map	0.0013
Spreading Bitter-cress	<i>Cardamine astoniae</i>	505025	Vulnerable	Dispersed	Habitat importance map	0.0013
Dusky Violet	<i>Viola fuscoviolacea</i>	505057	Rare	Dispersed	Habitat importance map	0.0013
Mossy Knawel	<i>Scleranthus singuliflorus</i>	503064	Rare	Dispersed	Habitat importance map	0.0013

RECEIVED  
 Department of Environment, Land, Water  
 and Planning  
 06/06/2024

# ADVERTISED PLAN

Alpine Water Skink	<i>Eulamprus kosciuskoi</i>	12550	Critically endangered	Dispersed	Habitat importance map	0.0013
Lady's Mantle	<i>Alchemilla xanthochlora</i>	500170	Rare	Dispersed	Habitat importance map	0.0013
Shining Cudweed	<i>Argyrotegium nitidulum</i>	501467	Rare	Dispersed	Habitat importance map	0.0013
Snow Pennywort	<i>Diplaspis nivis</i>	501064	Rare	Dispersed	Habitat importance map	0.0013
Dusty Daisy-bush	<i>Olearia phlogopappa subsp. flavescens</i>	504780	Rare	Dispersed	Habitat importance map ; special site	0.0013
Orange Billy-buttons	<i>Craspedia aurantia var. aurantia</i>	504642	Rare	Dispersed	Habitat importance map	0.0012
Alpine Groundsel	<i>Senecio pectinatus var. major</i>	503122	Rare	Dispersed	Habitat importance map	0.0012
Grey-green Cudweed	<i>Argyrotegium poliochlorum</i>	504519	Rare	Dispersed	Habitat importance map	0.0012
Alpine Colobanth	<i>Colobanthus affinis</i>	500793	Rare	Dispersed	Habitat importance map	0.0012
Tufted Hair-grass	<i>Deschampsia cespitosa</i>	501006	Rare	Dispersed	Habitat importance map	0.0012
Hard-head Bush-pea	<i>Pultenaea capitellata</i>	502840	Rare	Dispersed	Habitat importance map	0.0012
Milfoil Speedwell	<i>Veronica nivea</i>	503508	Rare	Dispersed	Habitat importance map	0.0012
Velvety Geebung	<i>Persoonia subvelutina</i>	502471	Rare	Dispersed	Habitat importance map	0.0012
Alpine Bootlace Bush	<i>Pimelea axiflora subsp. alpina</i>	504828	Rare	Dispersed	Habitat importance map ; special site	0.0011
Eichler's Buttercup	<i>Ranunculus eichlerianus</i>	502888	Rare	Dispersed	Habitat importance map	0.0011
Alpine Spear-grass	<i>Austrostipa nivicola</i>	503284	Rare	Dispersed	Habitat importance map	0.0011
Small Flower-rush	<i>Carpha alpina</i>	500652	Rare	Dispersed	Habitat importance map	0.0011
Mat Cudweed	<i>Euchiton traversii</i>	501474	Rare	Dispersed	Habitat importance map	0.0011
Alpine Buttons	<i>Leptorhynchos squamatus subsp. alpinus</i>	505611	Rare	Dispersed	Habitat importance map	0.0011
Tadgell's Daisy	<i>Brachyscome tadgellii</i>	503656	Rare	Dispersed	Habitat importance map	0.0011
Matted Rice-flower	<i>Pimelea biflora</i>	502516	Rare	Dispersed	Habitat importance map	0.0011
Sticky Fleabane	<i>Pappochroma nitidum</i>	501215	Rare	Dispersed	Habitat importance map	0.0011
Veined Plantain	<i>Plantago alpestris</i>	502548	Rare	Dispersed	Habitat importance map	0.0011

RECEIVED  
 Department of Environment, Land, Water  
 and Planning  
 08/06/2024

# ADVERTISED PLAN

Snowfield Groundsel	<i>Senecio pinnatifolius var. alpinus</i>	505108	Rare	Dispersed	Habitat importance map	0.0010
Alpine Crane's-bill	<i>Geranium brevicaule</i>	501433	Rare	Dispersed	Habitat importance map	0.0010
Alpine Triggerplant	<i>Stylidium montanum</i>	504722	Rare	Dispersed	Habitat importance map	0.0010
Snow Aciphyll	<i>Aciphylla glacialis</i>	500113	Rare	Dispersed	Habitat importance map	0.0010
Victorian Buttercup	<i>Ranunculus victoriensis</i>	503961	Rare	Dispersed	Habitat importance map ; special site	0.0010
High-plain Podolepis	<i>Podolepis laciniata</i>	505305	Rare	Dispersed	Habitat importance map	0.0010
Alpine Bog Skink	<i>Pseudemoia cryodroma</i>	12992	Endangered	Dispersed	Habitat importance map	0.0010
Royal Grevillea	<i>Grevillea victoriae subsp. victoriae</i>	505486	Rare	Dispersed	Habitat importance map	0.0010
Large Alpine Leek-orchid	<i>Prasophyllum sphacelatum</i>	505276	Rare	Dispersed	Habitat importance map	0.0009
Fir Clubmoss	<i>Huperzia australiana</i>	501709	Rare	Dispersed	Habitat importance map	0.0009
Thready Beard-heath	<i>Leucopogon pilifer</i>	501989	Rare	Dispersed	Habitat importance map	0.0009
Silver Caraway	<i>Oreomyrrhis argentea</i>	502358	Rare	Dispersed	Habitat importance map	0.0009
Rock Poa	<i>Saxipoa saxicola</i>	502607	Vulnerable	Dispersed	Habitat importance map	0.0009
Mountain Wallaby-grass	<i>Rytidosperma oreophilum</i>	504913	Rare	Dispersed	Habitat importance map	0.0009
Tussock Woodrush	<i>Luzula alpestris</i>	502065	Rare	Dispersed	Habitat importance map	0.0009
Mountain Aciphyll	<i>Aciphylla simplicifolia</i>	500114	Rare	Dispersed	Habitat importance map	0.0009
Fringed Rice-flower	<i>Pimelea ligustrina subsp. ciliata</i>	504841	Rare	Dispersed	Habitat importance map	0.0009
Alpine Sedge	<i>Carex blakei</i>	500626	Rare	Dispersed	Habitat importance map	0.0009
Snow Wallaby-grass	<i>Rytidosperma nivicola</i>	500971	Rare	Dispersed	Habitat importance map	0.0009
Alpine Phebalium	<i>Phebalium squamulosum subsp. alpinum</i>	504815	Rare	Dispersed	Habitat importance map ; special site	0.0009
Delicate Bush-pea	<i>Pultenaea tenella</i>	502876	Rare	Dispersed	Habitat importance map	0.0009
Fog Club-sedge	<i>Isolepis montivaga</i>	501781	Rare	Dispersed	Habitat importance map	0.0008
Rough Eyebright	<i>Euphrasia scabra</i>	501343	Endangered	Dispersed	Habitat importance map	0.0008
Tiny Bent	<i>Agrostis australiensis</i>	500150	Rare	Dispersed	Habitat importance map	0.0008

RECEIVED  
 Department of Environment, Land, Water  
 and Planning  
 08/06/2024

# ADVERTISED PLAN

Mountain Wheat-grass	<i>Australopyrum velutinum</i>	500147	Rare	Dispersed	Habitat importance map	0.0008
Cryptic Heath	<i>Epacris celata</i>	504633	Rare	Dispersed	Habitat importance map	0.0008
Dwarf Buttercup	<i>Ranunculus millanii</i>	502895	Rare	Dispersed	Habitat importance map	0.0008
Thick Bent-grass	<i>Deyeuxia crassiuscula</i>	501014	Rare	Dispersed	Habitat importance map	0.0008
Hair Sedge	<i>Carex capillacea</i>	500630	Rare	Dispersed	Habitat importance map	0.0008
Raleigh Sedge	<i>Carex raleighii</i>	500649	Rare	Dispersed	Habitat importance map	0.0008
Spinning Gum	<i>Eucalyptus perriniana</i>	501309	Rare	Dispersed	Habitat importance map	0.0008
Keeled Bent-grass	<i>Deyeuxia carinata</i>	501012	Rare	Dispersed	Habitat importance map	0.0008
Mueller's Bent	<i>Agrostis muelleriana</i>	500157	Rare	Dispersed	Habitat importance map	0.0008
Broad-toothed Rat	<i>Mastacomys fuscus mordicus</i>	11438	Endangered	Dispersed	Habitat importance map ; special site	0.0007
Green Billy-buttons	<i>Craspedia aurantia var. jamesii</i>	504647	Rare	Dispersed	Habitat importance map	0.0007
Carpet Sedge	<i>Carex jackiana</i>	500644	Rare	Dispersed	Habitat importance map	0.0007
Slender Gingidia	<i>Gingidia harveyana</i>	501436	Vulnerable	Dispersed	Habitat importance map	0.0006
Mountain Dandelion	<i>Taraxacum aristum</i>	503334	Rare	Dispersed	Habitat importance map	0.0006
Bald-seeded Willow-herb	<i>Epilobium curtisiae</i>	501177	Rare	Dispersed	Habitat importance map	0.0006
Ovens Everlasting	<i>Ozothamnus stirlingii</i>	501629	Rare	Dispersed	Habitat importance map	0.0006
Alpine Boronia	<i>Boronia algida</i>	500419	Rare	Dispersed	Habitat importance map	0.0005
Tussock Skink	<i>Pseudemoia pagenstecheri</i>	12993	Vulnerable	Dispersed	Habitat importance map	0.0005
Catkin Wattle	<i>Acacia dallachiana</i>	500023	Rare	Dispersed	Habitat importance map	0.0004
Mountain Needlewood	<i>Hakea lissosperma</i>	501565	Rare	Dispersed	Habitat importance map	0.0004
Sickle-leaf Rush	<i>Juncus falcatus subsp. falcatus</i>	501816	Rare	Dispersed	Habitat importance map	0.0004
Alpine Water-milfoil	<i>Myriophyllum alpinum</i>	503870	Rare	Dispersed	Habitat importance map	0.0004
Dark-flower Rush	<i>Juncus phaeanthus</i>	501832	Rare	Dispersed	Habitat importance map	0.0004
Alpine Bush-pea	<i>Pultenaea fasciculata</i>	502847	Rare	Dispersed	Habitat importance map	0.0003

RECEIVED  
 Department of Environment, Land, Water  
 and Planning  
 08/06/2024

Fine-leaf Snow-grass	<i>Poa clivicola</i>	502585	Rare	Dispersed	Habitat importance map	0.0003
Alpine Fireweed	<i>Senecio extensus</i>	505245	Rare	Dispersed	Habitat importance map	0.0003
Mountain Willow-herb	<i>Epilobium sarmentaceum</i>	501181	Rare	Dispersed	Habitat importance map	0.0003
Tufted Knawel	<i>Scleranthus diander</i>	503061	Rare	Dispersed	Habitat importance map	0.0002
Cliff Cudweed	<i>Euchiton umbricola</i>	501475	Rare	Dispersed	Habitat importance map	0.0001
Grey Beard-heath	<i>Leucopogon attenuatus</i>	501971	Rare	Dispersed	Habitat importance map	0.0001

**Habitat group**

- Highly localised habitat means there is 2000 hectares or less mapped habitat for the species
- Dispersed habitat means there is more than 2000 hectares of mapped habitat for the species

**Habitat impacted**

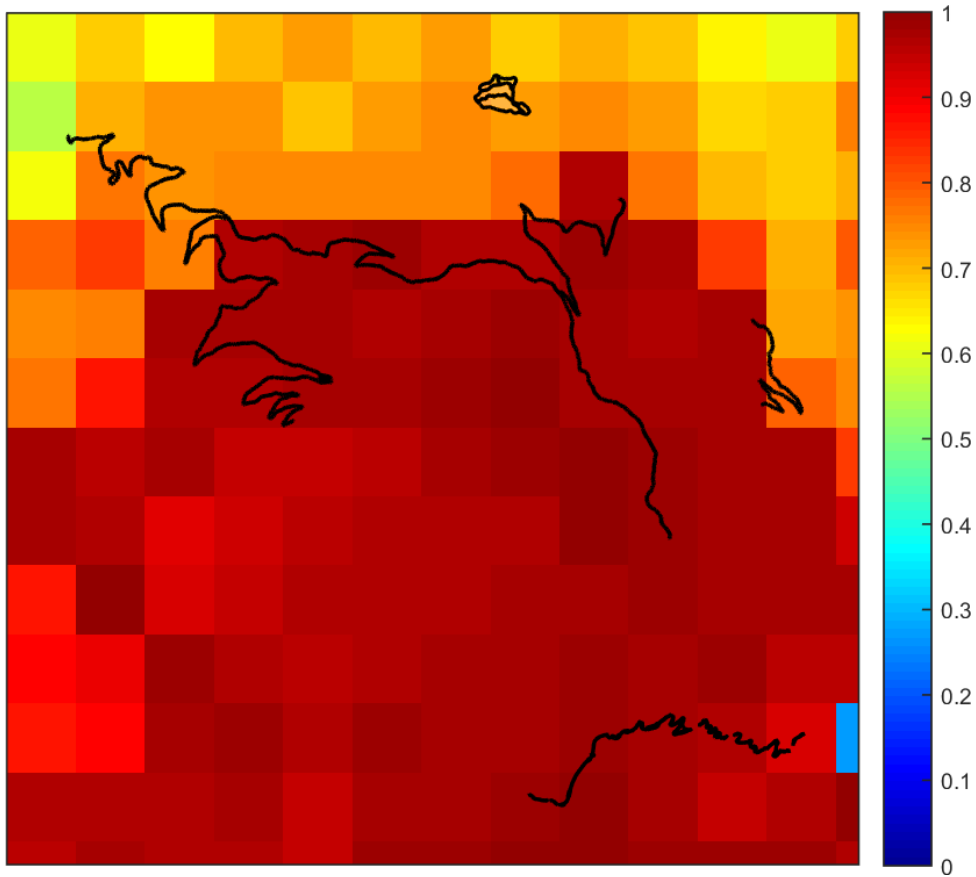
- Habitat importance maps are the maps defined in the Guidelines that include all the mapped habitat for a rare or threatened species
- Top ranking maps are the maps defined in the Guidelines that depict the important areas of a dispersed species habitat, developed from the highest habitat importance scores in dispersed species habitat maps and selected VBA records
- Selected VBA record is an area in Victoria that represents a large population, roosting or breeding site etc.

**ADVERTISED  
PLAN**

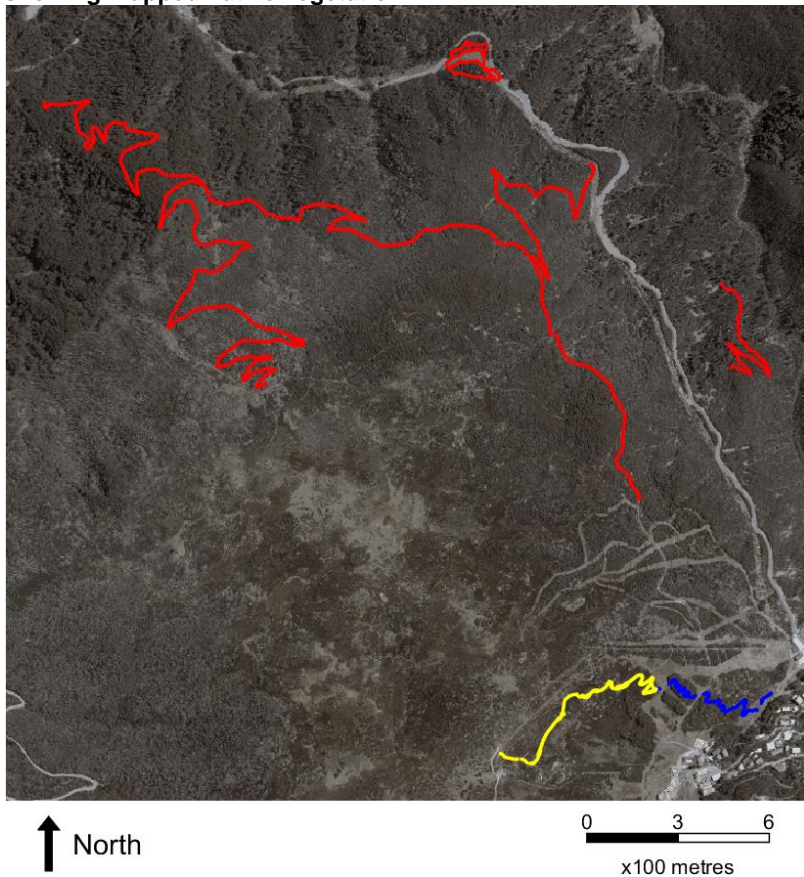
**RECEIVED**  
**Department of Environment, Land, Water  
and Planning**  
**08/06/2024**

08/06/2024

### Appendix 3 – Images of mapped native vegetation 2. Strategic biodiversity values map

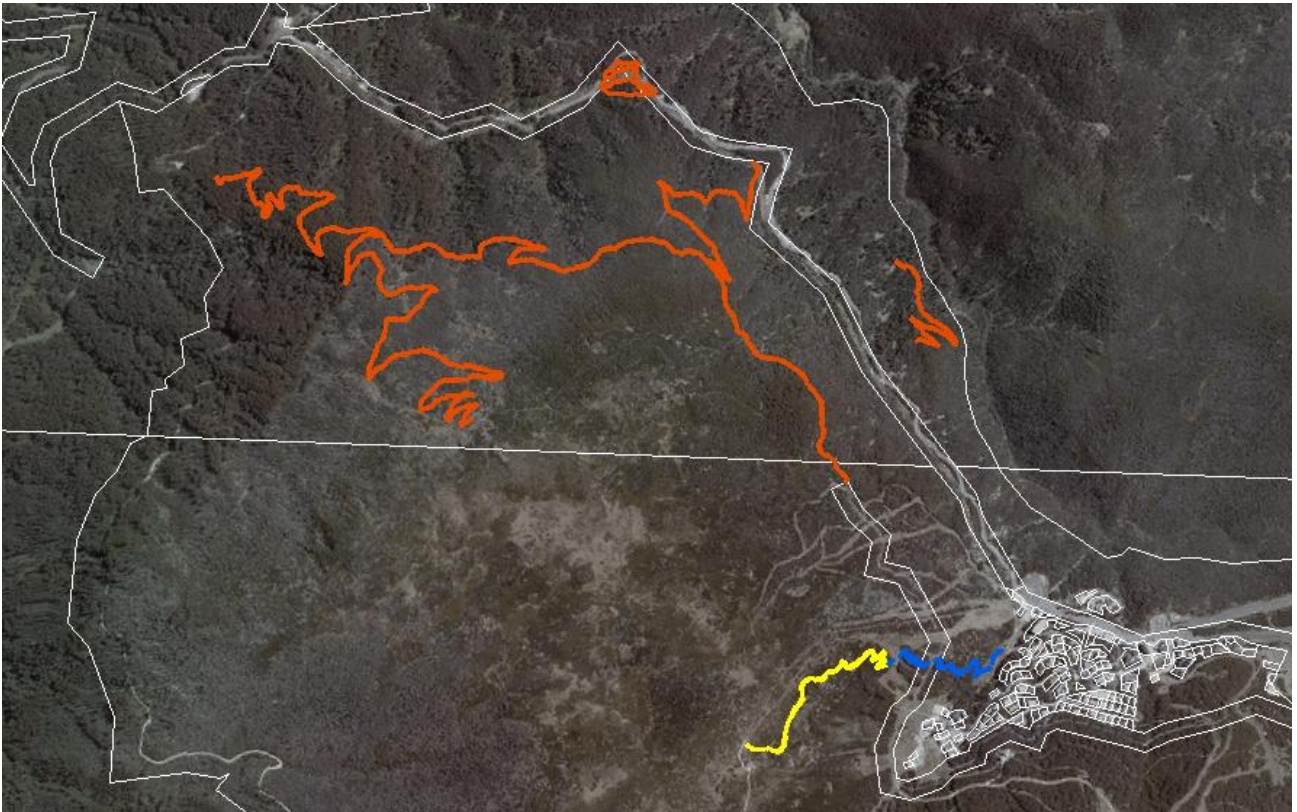


### 3. Aerial photograph showing mapped native vegetation



**ADVERTISED  
PLAN**

#### 4. Map of the property in context



## ADVERTISED PLAN

Yellow boundaries denote areas of proposed native vegetation removal.

Red boundaries denote areas of past removal.

Blue boundaries denote zones of partial removal with a halved condition score.

**RECEIVED**  
**Department of Environment, Land, Water  
and Planning**

**08/06/2024**