









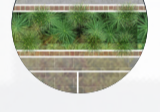









Existing crossover to be removed.
Footpath to be reinstated

Planting bed to north/ west facing wall (200mm wide) to be fully irrigated.
Vertical screen framing support structure to be fixed to facade, to support evergreen climbers. Refer to photographic examples and elevation.

Elaeocarpus reticulatus



Legend

-  **Planting bed**
Refer to table for approximate soil volumes.
-  **Existing electrical easement**
-  **Vertical Screen framing to support climbers**
By Architects
-  **Bollards**
Indicative location
-  **Seating benches, cantilevered from retaining walls/ raised planters**
-  **Exposed aggregate concrete**
Subject to detail design
-  **Paving**
Unit paving, subject to detail design
-  **Correa glabra**
Rock Correa
-  **Correa alba**
White Correa
-  **Chrysocephalum apiculatum**
Common Everlasting
-  **Lomandra 'tanika'**
Fine-Leaf Lomandra
-  **Leucophyta brownii**
Cushion Bush
-  **Parthenocissus tricuspidata**
Boston Ivy
-  **Trachelospermum jasminoides**
Star Jasmine
-  **Hakea laurina**
Pin-cushion Hakea
-  **Elaeocarpus reticulatus**
Blueberry Ash
-  **Robinia pseudoacacia**
Black Locust
-  **Ulmus parvifolia**
Chinese Elm



Typical cantilevered timber bench seating



Typical car park planting



Vertical screen framing to support climbers

Arbour structure to walkway to provide shade and highlight pedestrian entry to supermarket. Feature raised planter and seating, with focal planting of *Trachelospermum jasminoides* and *Parthenocissus tricuspidata*. Refer to Architectural drawings for Arbor detail.

High quality public realm interface with High Street, incorporating bus stop seating and protected arbour structure.

Robinia pseudoacacia

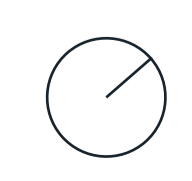
Existing crossover to be removed.
Footpath to be reinstated

Existing street trees (*Robinia pseudoacacia*) to be retained.

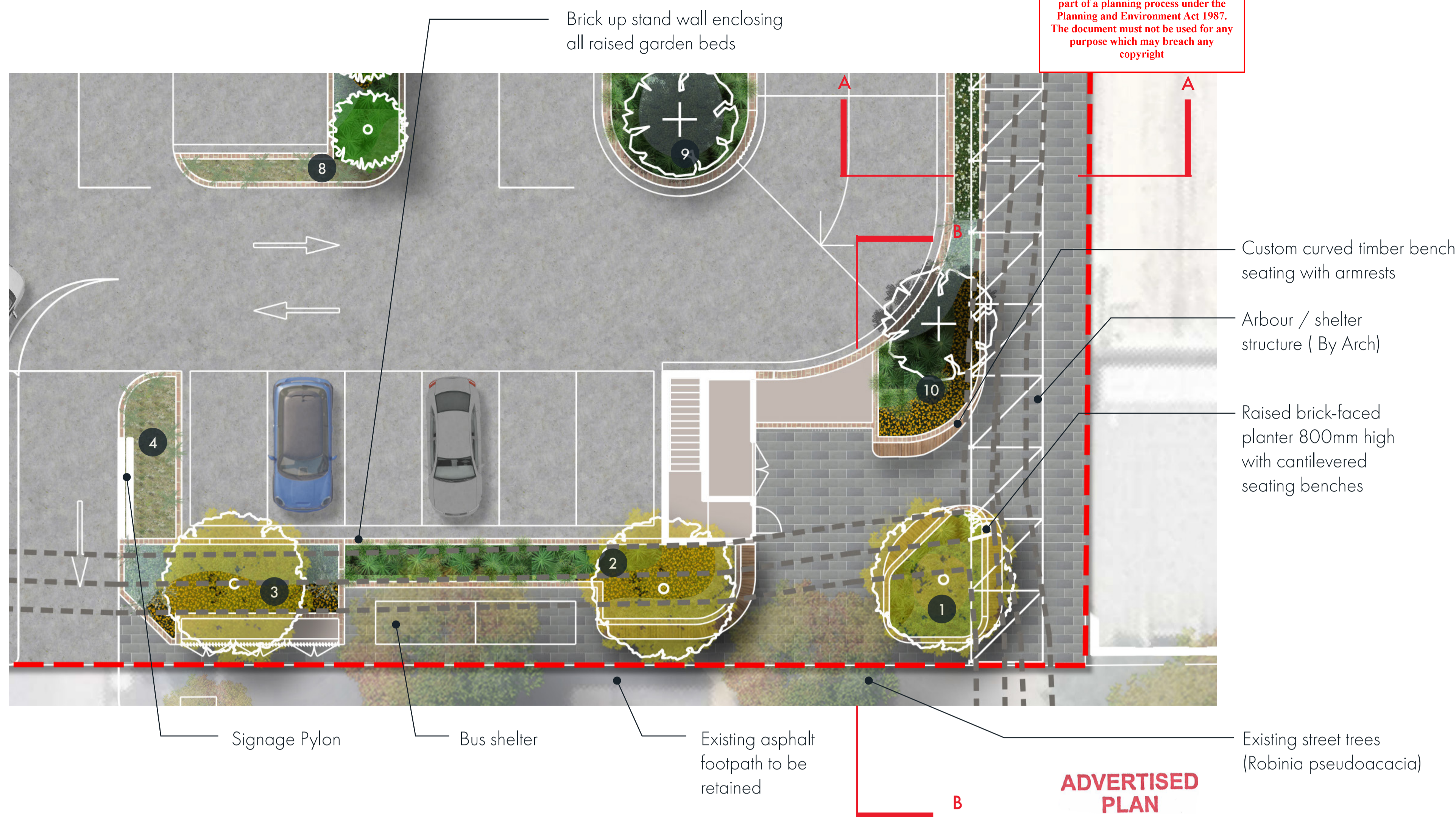
Drawing Title	Project Name	Drawing No.	Revision	Date	Drawn	Checked	Project Principal	Scale
Landscape Concept	Coles Belmont	321-0877-01-L-01-DR01	04	28.02.2024	EB	AW	AW	1:250 (A1)

This copied document to be made available for the sole purpose of enabling its consideration and review as part of a planning process under the Planning and Environment Act 1987. The document must not be used for any purpose which may breach any copyright

ADVERTISED PLAN



This copied document to be made available for the sole purpose of enabling its consideration and review as part of a planning process under the Planning and Environment Act 1987. The document must not be used for any purpose which may breach any copyright

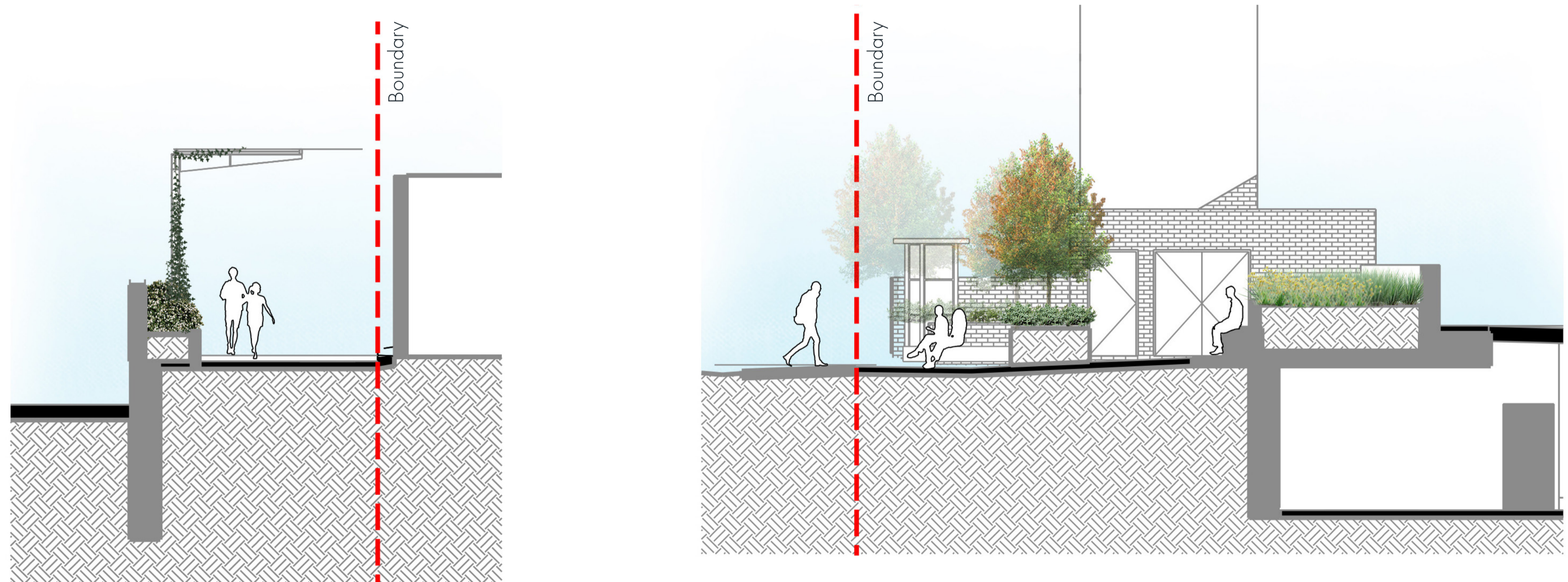


Plant Schedule

Botanic Name	Common Name	Mature (H x W)	Install Size	QTY
Trees				
<i>Ulmus parvifolia</i>	Chinese Elm	8-15 x 5m	45Lt	4
<i>Robinia pseudoacacia</i>	Black Locust	20-25 x 12-18m	45Lt	4
<i>Elaeocarpus reticulatus</i>	Blueberry Ash	3-15 x 3-5m	45Lt	13
Shrubs, Grasses & Groundcovers				
<i>Leucophyta brownii</i>	Cushion Bush	1 x 1m	200mm	TBD
<i>Lomandra 'tanika'</i>	Fine-Leaf Lomandra	0.6 x 0.6m	200mm	TBD
<i>Chrysocephalum apiculatum</i>	Common Everlasting	0.4 x 0.5-1.5m	200mm	TBD
<i>Correa glabra</i>	Rock Correa	1 x 1.5m	200mm	TBD
<i>Correa alba</i>	White Correa	1-1.5 x 1-1.5m	300mm	TBD
<i>Hakea laurina</i>	Pin-cushion Hakea	2.5-6 x 2m	45Lt	34
Climbers & Cascading				
<i>Trachelospermum jasminoides</i>	Star Jasmine	3-6 x 0.4m	200mm	TBD
<i>Parthenocissus tricuspidata</i>	Boston Ivy	9-15 x 1-3m	200mm	TBD



Inset Plan - Entry Plaza Forecourt



A Eastern walkway with arbour structure and Star Jasmine climbers.

B Public Plaza interface to High St

Approximate Soil Volumes

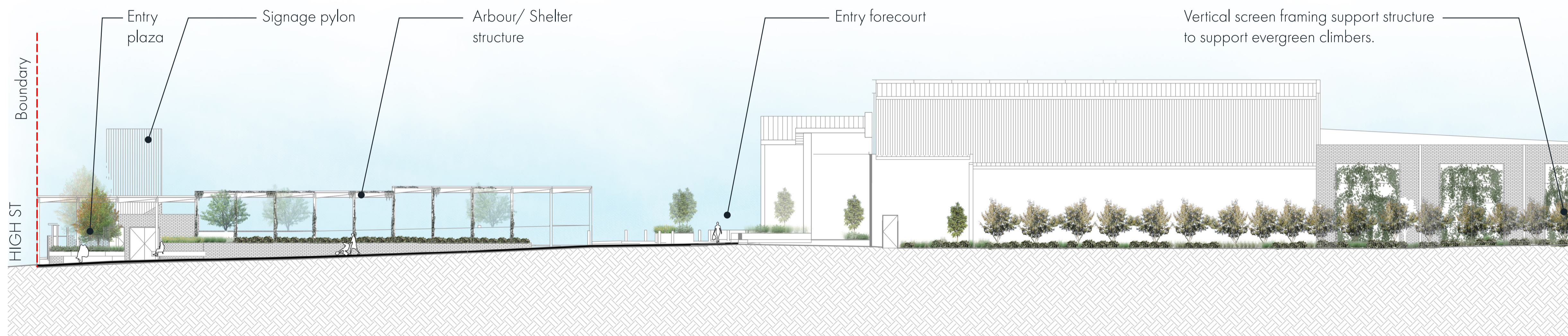
Planting Bed	Approximate Soil Volume m3	Planting Bed	Approximate Soil Volume m3
1	9 (raised, in-situ)	12	10 (on structure)
2	19 (raised, in-situ)	13	4 (on structure)
3	15 (raised, in-situ)	14	24 (on structure)
4	7 (on structure)	15	19 (on structure)
5	1 (300mm in-situ garden bed)	16	13 (on structure)
6	8 (on structure)	17	11 (in-situ)
7	10 (on structure)	18	66 (in-situ)
8	15 (on structure)	19	4 (in-situ)
9	13 (on structure)	20	12 (in-situ)
10	25 (on structure)	21	54 (in-situ)
11	5 (on structure)	22	3 (in-situ)

Unless otherwise stated, all on structure planters are raised, at a height of 800mm. All planters are fully irrigated and drained.



C South elevation

This copied document to be made available for the sole purpose of enabling its consideration and review as part of a planning process under the Planning and Environment Act 1987. The document must not be used for any purpose which may breach any copyright



D North section/ elevation

ADVERTISED PLAN



E West elevation

Drawing Title	Project Name	Drawing No.	Revision	Date	Drawn	Checked	Project Principal	Scale
Landscape Concept	Coles Belmont	321-0877-01-L-01-DR03	04	28.02.2024	EB	AW	AW	1:200 (A1) 0 4 6 20