

ADVERTISED PLAN



Tree Consultants & Contractors
robgalbraith@outlook.com.au

5 Nov 2025 **Addendum 20/Mar/26**

Caulfield Grammar (Shelford Campus)
Attn. Richard Li
Project Manager – Building & Infrastructure
Caulfield Grammar

Dear Sir,

Re: 4 Hood Crescent, Caulfield

This copied document to be made available for the sole purpose of enabling its consideration and review as part of a planning process under the Planning and Environment Act 1987. The document must not be used for any purpose which may breach any copyright

Introduction

Building works are proposed for 4 Hood Crescent, Caulfield, within the area shown on the existing site conditions survey on page 2 of this report. Galbraith and Associates has been requested by Caulfield Grammar to provide an arborist report for the trees within this area. Each is described in terms of species type, trunk diameter at 1.4m above ground (DBH), height, spread, condition, origin and whether indigenous and/or self-sown. The worth for retention estimates, and tree protection zones according to the relevant Australian Standard 4970:2025 'Protection of trees on development sites' approach for the higher worth and neighbouring trees are provided. I undertook the assessment on the 22/May/25.

Each tree is numbered and located on page 3 and described in the table of data on pages 4-8. A discussion of the trees proposed to be removed is provided in the addendum on page 9, followed by a glossary of terms and many photos.

The Trees - General

The trees are varied in species origin, size and age. Of the trees which occur within the existing sporting facility, it is only the large English Oak (Tree 17) overhanging the existing building which is old and likely dates back to the early 1900s. The remaining trees would have been planted post war.

The only tree which is possibly indigenous to the site is Tree 4, the large Manna Gum near the north-east corner of the study area. Despite its large size I would suggest that this tree is not old but rather planted in the late 1960s or early 1970s. It is located at the edge of the oval and abutting private property to the east. It is no doubt exploiting to the full the copious moisture availability from irrigation and fertilizer for the turf. Although it is healthy and vigorous, it is a species renowned for its sudden limb drop propensity. It will be very difficult to manage safely. I strongly recommend that it be

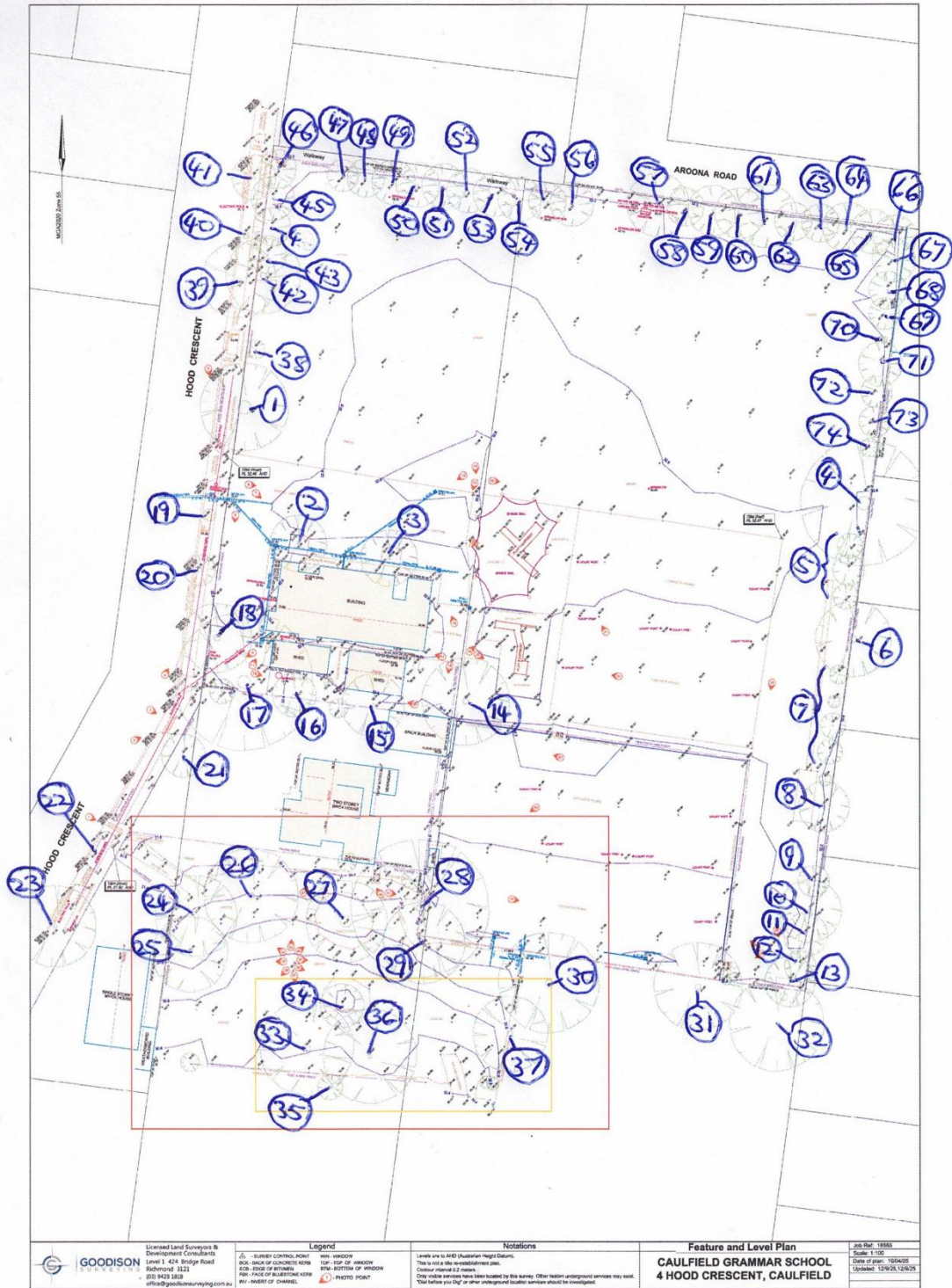
removed at the beginning of the re-furbishment works as it will only be a constant source of consternation and expense in the near term if it is retained.

The other large tree within the sporting facility which should also be removed on safety grounds is Tree 1, the over mature Willow Myrtle. As is typical of these trees when 70 or so years of age, its multiple stems are beginning to separate and split apart, revealing extensive internal decay. The roots are also lifting the street footpath, creating a tripping risk.

The Illawarra Flame Tree (Tree 18) is quite a tall specimen of its type however is compromised and misshapen due to its location between Tree 17 and the street overhead electrical conductors. It is possible this tree was planted about 80 years ago. The only other large tree is the Himalayan Cedar, Tree 14. It is probably a 1970s planting and in good condition.

The other trees assessed were those close to the sporting grounds but within the car park area of St Marys Church. Trees 27 (Flowering Gum) and Tree 28 (English Oak) are massive old trees, probably established in the 1900s. They are in good condition. Tree 35, a small previously lopped tree of only 5m height, is a rare species to be found in the metro area. It is a Brown Laurel (*Cryptocarya triplinervis* var *triplinervis*), a species native to the region between northern NSW and Townsville. The other trees consist of Pinoaks, an Elm, a Lillypilly, a Pepper Tree, a River Red Gum (likely not of local provenance and planted), a Queensland Brush Box and a Lemon Scented Gum, all likely planted in the 1960s and 1970s. They are mainly in good condition with the exception of the River Red Gum (Tree 33) and the Queensland Brush Box (Tree 34).

**ADVERTISED
PLAN**



**ADVERTISED
PLAN**

TREE SURVEY

Tree No.	Species Indigenous (I) Victorian (V) Australian (A) Exotic (E) Weed (W)	DBH (cm)	HxS (m)	Comments, WOR, NRZ(m), SRZ(m)
1	Agonis flexuosa A Willow Myrtle	150	11x15	Over mature multi stemmed tree which is splitting apart in several places, revealing substantial internal decay. The roots are lifting the street footpath. This tree should not be retained. WOR 2 NRZ 15 SRZ 4
2	Jacaranda mimosifolia E Jacaranda	36	11x11	Young mature tree in good condition. WOR 6 NRZ 4.3 SRZ 2.4
3	Jacaranda mimosifolia E Jacaranda	21, 20, 29	11x11	Young mature tree in good condition. WOR 6 NRZ 4.9 SRZ 2.5
4	Eucalyptus viminalis I Manna Gum	135	20x20	Healthy young mature tree lopsided to the west over the sporting ground due to heavy cutting back on the east side. It has very long heavy horizontal branches which are at risk of fracture. The whole co-dominant stem originating at 4m leaning west will also be at risk of fracture in the near to medium term and it cannot be cabled back to the opposing co-dominant stem which has been lopped. This tree should not be retained. WOR 2 NRZ 15 SRZ 3.9
5	Jacaranda mimosifolia E Jacaranda	< 15	< 5m high	Row of small trees of little note. WOR 3 NRZ 2 SRZ 1.5
6	Ficus rubiginosa A Port Jackson Fig	~ 55, 55	15x13	Neighbouring tree whose trunk and a co-dominant stem is protruding beyond the fence. I recommend it be pruned back hard on its west to mitigate the risk of the westerly co-dominant stem splitting out into the school. NRZ 9.3 SRZ 3.2
7	Jacaranda mimosifolia E Jacaranda	< 15	< 5m high	Row of small trees of little note. WOR 4 NRZ 2 SRZ 1.5
8	Jacaranda mimosifolia E Jacaranda	30	9x9	Young tree in good condition. WOR 5 NRZ 3.6 SRZ 2.1
9	Jacaranda mimosifolia E Jacaranda	15	5x5	Young tree lopsided to the NW. WOR 4 NRZ 2 SRZ 1.5
10	Jacaranda mimosifolia E Jacaranda	36	10x9	Young tree in good condition. WOR 5 NRZ 4.3 SRZ 2.3
11	Jacaranda mimosifolia E Jacaranda	26	10x9	Young tree in good condition. WOR 5 NRZ 4.3 SRZ 2.3
12	Jacaranda mimosifolia E Jacaranda	16	6x4	Young tree. WOR 4 NRZ 2 SRZ 1.5

**ADVERTISED
PLAN**

Tree No.	Species Indigenous (I) Victorian (V) Australian (A) Exotic (E) Weed (W)	DBH (cm)	HxS (m)	Comments, WOR, NRZ(m), SRZ(m)
13	Jacaranda mimosifolia E Jacaranda	15	5x5	Young tree. WOR 3 NRZ 2 SRZ 1.5
14	Cedrus deodara E Himalayan Cedar	66	15x13	Young mature tree in good condition. WOR 7 NRZ 7.9 SRZ 3
15	Photinia serrulata E Chinese Hawthorn	30, 28, 22, 22	8x12	Healthy mature broad low evergreen. WOR 5 NRZ 6.2 SRZ 2.7
16	Photinia serrulata E Chinese Hawthorn	23, 15, 13	5x7	Small mature low evergreen. WOR 3 NRZ 3.6 SRZ 2.2
17	Quercus robur E English Oak	143	15x22	Old broad spreading deciduous in good condition. WOR 8 NRZ 15 SRZ 4
18	Brachychiton acerifolius A Kurrajong	76	13x8	Healthy but misshapen due to competition with Tree 17 and street power line clearance pruning. WOR 6 NRZ 9.1 SRZ 2.9
19	Lophostemon conferta A Queensland Brush Box	8	4x2	Recently planted street tree. NRZ 2 SRZ 1.5
20	Brachychiton populneus V Kurrajong	42	6x6	Fair – lopped under LV power lines. NRZ 5 SRZ 2.5
21	Acer palmatum E Japanese Maple	18, 14, 13	5x7	Young mature healthy tree. WOR 5 NRZ 3.1 SRZ 2
22	Brachchiton rupestris A Bottle Tree	4	2x1	Recently planted street tree. NRZ 2 SRZ 1.5
23	Brachychiton populneus V Kurrajong	48	8x12	Fair-good – lopped under LV power lines. NRZ 5.8 SRZ 2.7
24	Liquidambar styraciflua E Liquidambar	40	17x11	Fair condition, lopsided to the NW. WOR 5 NRZ 4.8 SRZ 2.5
25	Ulmus minor E Smooth leaved Elm	66	20x12	Healthy young mature tree. WOR 7 NRZ 7.9 SRZ 3
26	Quercus palustris E Pinoak	67	20x15	Good condition. WOR 7 NRZ 8 SRZ 3
27	Corymbia ficifolia A Flowering Gum	118	10x14	Old mature tree in fair-good condition. WOR 8 NRZ 14.2 SRZ 4
28	Quercus robur E English Oak	108	20x20	Old mature tree in good condition. The trunk is growing against the tennis court fence. WOR 8 NRZ 13 SRZ 3.7
29	Syzygium smithii V Lillypilly	36, 32, 27, 21, 21	11x13	Mature tree, somewhat suppressed and thinly foliated. WOR 5 NRZ 7.5 SRZ 2.9

**ADVERTISED
PLAN**

Tree No.	Species Indigenous (I) Victorian (V) Australian (A) Exotic (E) Weed (W)	DBH (cm)	HxS (m)	Comments, WOR, NRZ(m), SRZ(m)
30	Corymbia citriodora A Lemon Scented Gum	68	18x17	Approx 40 year old tree in good condition. WOR 7 NRZ 8.2 SRZ 3
31	Schinus areira E Pepper Tree	65	11x12	Healthy mature tree. WOR 6 NRZ 7.8 SRZ 3
32	Quercus palustris E	73	18x18	Healthy mature tree. WOR 7 NRZ 8.7 SRZ 3.1 Centred 4.1m from the fence.
33	Eucalyptus camaldulensis I River Red Gum	106	30x14	Fast growing tall tree, probably not of local provenance. Although the tree looks healthy it has large cankers on the lower trunk where major sections of the trunk have died, forming approximately a third of the circumference. Indicative of substantial root death. I doubt that this tree has a long SULE. WOR 4 NRZ 12.7 SRZ 3.7
34	Lophostemon conferta A Queensland Brush Box	46	11x11	The tree is in fair-poor condition with a thinly foliated crown and many dead branches and extremities. A large old wound is present at 1m where a co-dominant stem split out years ago. WOR 5 NRZ 5.5 SRZ 2.6
35	Cryptocarya triplinervis A var. triplinervis Brown Laurel	17, 18	6x6	Small mature tree which has been lopped many years ago at 3m. Otherwise healthy. Uncommon species in the metro area. WOR 7 NRZ 3 SRZ 2
36	Quercus palustris E Pinoak	55	17x17	Moderate condition however several long low branches need to be weight reduced. WOR 6 NRZ 6.6 SRZ 2.8
37	Cupressus torulosa E Bhutan Cypress	89	21x15	Healthy old tree however the trunk bifurcates at 3m. WOR 7 NRZ 10.7 SRZ 3.5
38	Jacaranda mimosifolia E Jacaranda	13	4x3	Small tree of little note. WOR 4 NRZ 2 SRZ 1.5
39	Brachychiton populneus V Kurrajong	57	8x10	Healthy mature tree lopped under LV and HV overhead street electrical conductors. NRZ 6.8 SRZ 2.8
40	Brachychiton populneus V Kurrajong	3	2x1	Healthy recently planted tree. NRZ 2 SRZ 1.5
41	Brachychiton populneus V Kurrajong	40	6x6	Healthy mature tree lopped under LV and HV overhead street electrical conductors. NRZ 4.8 SRZ 2.5

**ADVERTISED
PLAN**

Tree No.	Species Indigenous (I) Victorian (V) Australian (A) Exotic (E) Weed (W)	DBH (cm)	HxS (m)	Comments, WOR, NRZ(m), SRZ(m)
42	Eucalyptus tereticornis V Forest Red Gum	66	15x15	Good condition – lopsided to the east. Its anchorage roots are lifting the street footpath, thus modification of the footpath around the trunk will have to take place in a manner which does not impact the anchorage if this tree is to be retained which may not be a viable option. WOR 4 NRZ 7.9 SRZ 3

43-72 Consist of perimeter plantings of Jacarandas of approximately 30 years of age.

43	Jacaranda mimosifolia E	15	6x4	Lopsided to the NW. WOR 4 NRZ 2 SRZ 1.5
44	Jacaranda mimosifolia E	15	7x5	Fair. WOR 4 NRZ 2 SRZ 1.5
45	Jacaranda mimosifolia E	17	7x5	WOR 4 NRZ 2 SRZ 1.5
46	Jacaranda mimosifolia E	12, 11	5x5	Fair. WOR 4 NRZ 2 SRZ 1.5
47	Jacaranda mimosifolia E	13, 6	6x5	WOR 4 NRZ 2 SRZ 1.5
48	Jacaranda mimosifolia E	16	6x5	WOR 4 NRZ 2 SRZ 1.5
49	Jacaranda mimosifolia E	19	7x6	WOR 4 NRZ 2.3 SRZ 1.7
50	Jacaranda mimosifolia E	11, 9	7x6	WOR 4 NRZ 2 SRZ 1.5
51	Jacaranda mimosifolia E	25	8x7	WOR 4.5 NRZ 3 SRZ 2
52	Jacaranda mimosifolia E	16	7x5	WOR 4 NRZ 2 SRZ 1.5
53	Jacaranda mimosifolia E	22	8x7	WOR 5 NRZ 2.6 SRZ 1.8
54	Jacaranda mimosifolia E	19	7x7	WOR 4 NRZ 2.3 SRZ 1.7
55	Jacaranda mimosifolia E	13, 11	6x5	WOR 4 NRZ 2 SRZ 1.5
56	Jacaranda mimosifolia E	16	5x5	WOR 4 NRZ 2 SRZ 1.5
57	Jacaranda mimosifolia E	23	7x7	WOR 5 NRZ 2.8 SRZ 1.9
58	Jacaranda mimosifolia E	21	5x5	WOR 4 NRZ 2.5 SRZ 1.9
59	Jacaranda mimosifolia E	23	7x7	WOR 4.5 NRZ 2.8 SRZ 1.9
60	Jacaranda mimosifolia E	20	7x6	WOR 5 NRZ 2.4 SRZ 1.8
61	Jacaranda mimosifolia E	25	8x6	WOR 5 NRZ 3 SRZ 2
62	Jacaranda mimosifolia E	14, 10	5x5	WOR 4 NRZ 2 SRZ 1.5
63	Jacaranda mimosifolia E	16	6x6	WOR 4 NRZ 2 SRZ 1.5
64	Jacaranda mimosifolia E	24	9x9	WOR 5 NRZ 2.9 SRZ 2

**ADVERTISED
PLAN**

Tree No.	Species Indigenous (I) Victorian (V) Australian (A) Exotic (E) Weed (W)	DBH (cm)	HxS (m)	Comments, WOR, NRZ(m), SRZ(m)
65	Jacaranda mimosifolia E	19	9x7	WOR 5 NRZ 2.3 SRZ 1.8
66	Jacaranda mimosifolia E	19	9x7	WOR 5 NRZ 2.3 SRZ 1.8
67	Jacaranda mimosifolia E	24	9x7	WOR 5 NRZ 2.9 SRZ 2
68	Jacaranda mimosifolia E	19	7x7	WOR 5 NRZ 2.3 SRZ 1.9
69	Jacaranda mimosifolia E	13, 11	6x6	WOR 4 NRZ 2 SRZ 1.5
70	Jacaranda mimosifolia E	5	2x1	WOR 3 NRZ 2. SRZ 1.5
71	Jacaranda mimosifolia E	14, 15	7x7	WOR 4 NRZ 2.5 SRZ 1.9
72	Jacaranda mimosifolia E	11, 10	4x4	WOR 4 NRZ 2 SRZ 1.5
73	Jacaranda mimosifolia E	13, 13	9x9	WOR 5 NRZ 2.2 SRZ 1.8
74	Jacaranda mimosifolia E	13	5x4	WOR 5 NRZ 2 SRZ 1.5

**ADVERTISED
PLAN**

Local Law

A canopy tree is defined under the Glen Eira Council Local Law as a:

- palm tree taller than eight metres measured from ground level
- tree with a stump circumference of 140 centimetres or more measured at ground level
- tree taller than five metres measured from ground level
- trunk circumference of 140 centimetres or more measured at a point 140 centimetres along the trunk's length from ground level
- combined trunk circumference of 140 centimetres or more measured at a point 140 centimetres along the trunks' lengths from ground level.

Assuming that the Glen Eira local law applies to trees within the school and the church grounds, the following trees are classified 'canopy trees' and will require a permit to remove, or prune if greater than 10% of the canopy is to be removed.: 1, 3, 4, 6, 8, 14, 15, 16, 17, 18, 24, 25, 26, 27, 28, 29, 30, 31, 32, 33, 34, 36, 37 and 42.

The trees not requiring a permit are numbers 5, 7, 9-13, 21, 35, 38 and 43-72.

Clause 52.37 of the Planning Scheme

No 4 Hood Street is zoned as residential, hence clause 52.37 of the planning scheme applies.

A *canopy tree* under the Clause 52.37 definition means a tree that has:

- a height of more than 5 metres above ground level; and
- a trunk circumference of more than 0.5 metres, measured at 1.4 metres above ground level; and
- a canopy diameter of at least 4 metres;

Thus the following trees are *canopy trees*: 1-4, 8-18, 21, 24-30, 33, 34, 36, 37, 38, 42-69, 71-74.

A *boundary canopy tree* means a canopy tree if any part of its trunk is within:

- 6 metres of the narrowest street frontage of a lot; or
- 4.5 metres of the rear boundary of a lot;

Thus the following trees are *boundary canopy trees*: 1, 8-13, 18, 21, 38, 42-46 and 66-74.

Clause 52.17 of the Planning Scheme

There are no trees requiring a permit to remove under clause 52.17 – native vegetation. Although Tree 4 is a Manna Gum which is a species native to the area, this particular individual is highly likely to have been planted, given its morphology and likely relatively young age of 50-60 years.

**ADVERTISED
PLAN**

Addendum 19/Mar/26

Since the arborist report was completed I have been requested by Caulfield Grammar to assess the Existing and Demolition Site Plan, drawing No. TP031A by CO.OP Studio and comment.

According to the plan, it is proposed to remove *Trees 01, 04, 14, 16 and 42*. These five trees will require a permit to remove under the local law. All the other trees, some of which are old and of high significance and worth for retention, are being retained

Tree 01 is the over mature Willow Myrtle of some 11m height. It is structurally poor and causing infrastructure problems. The stems of this multi-trunked tree are splitting apart in several places, revealing extensive internal decay. The roots are lifting the adjacent street footpath. The tree is a liability and should not be retained.

Tree 4 is a massive young mature Manna Gum on the east boundary. The tree consists of two major co-dominant stems arising from a structurally poor fork. The easterly co-dominant stem has been heavily cut back (presumably by or at the behest of the neighbour to the east) so the crown of the tree is lopsided to the west. This westerly stem cannot be reliably anchored back to the lopped easterly stem to prevent it splitting out. The tree is still rapidly growing and the long heavy branches overhanging the sports ground will soon be at high risk of sudden failure. They will continue to lengthen and sag, growing beyond their safe self-supporting limits in their quest to reach light away from the shading above. There is an absence of internal foliage to prune back to, hence weight reduction pruning as part of hazard management without resorting to lopping or highly disfiguring multi major branch removal is not a viable option. This tree is a liability and not appropriate for the location. The massive fast growing nature of the tree is not characteristic of local provenance Manna Gum but rather from a higher altitude higher rainfall zone.

Tree 14, a young mature Himalayan Cedar of 50-60 years of age in good condition. It is approximately 15m in height. The species is native to the lower slopes of the Himalayas and has been commonly planted in Melbourne metro parks and larger private gardens since the late 1800s. It has no historic or botanical significance.

Tree 16 is a 5m high Photinia. The species is commonly used for hedging or screens. This particular individual has little significance in the landscape and is readily replaced.

Tree 42 is a 15m high Forest Red Gum, probably < 50 years of age. It is healthy but its useful life expectancy is compromised by the fact that it has been planted too close to the street footpath. Its roots are causing a very pronounced lifting of the adjacent street footpath (see photo on page 24). In order to level the path to prevent the current tripping hazard and nuisance, one would have to cut one or more major roots, compromising the health and structural stability of the tree.

**ADVERTISED
PLAN**

Conclusion

Of the five trees proposed to be removed, only one tree is of high worth for retention, however it has no historic or botanic significance, and is of little habitat value. Two of the trees are severe liabilities, one is causing substantial infrastructure damage and the fifth is small and of low significance. Their removal represents a relatively small loss in overall tree canopy provision.

The five will however require permits to remove under the local law. All five are classified 'canopy trees' under clause 52.37 of the planning scheme. Trees 1 and 42 are classified 'boundary canopy trees' under clause 52.37.

In order to understand the table of data, I have provided the following explanatory notes:

Tree Origin Categories

Each tree has been classified as to whether it is indigenous (**I**), native to Victoria (**V**), native to Australia (**A**), exotic (**E**) or an environmental weed (**W**).

An indigenous species (**I**) is one that is known to grow naturally in the local area, even if the individual tree has been planted and is from a seed source or provenance foreign to the area.

A species classified **V** is one which has a part or all, even if very small, of its natural range within Victoria, although it may occur outside the state as well. It does not however occur naturally in the local area.

A species classified **A** is native elsewhere in Australia than Victoria. It does not occur naturally in the local area.

A species classified **E** has its natural range occurring outside Australia.

A species classified **W** is a seriously invasive environmental weed.

DSH diameter of trunk over bark at breast height In a number of cases where the tree has forked into multiple trunks below breast height (1.3-1.5m) the diameter is measured below the fork and an estimate is made for the single trunk equivalent at breast height, or else figures for each of the individual stems can be given.

HxS This is the estimated height (H) of the tree and its average crown spread (S).

SULE Safe useful life expectancy in years. Taken in the context that the area is to be developed for residential use, and that sensible distances are maintained between the buildings and the trees, this is the estimate of time that the tree will continue to provide useful amenity without imposing an onerous financial burden in order to maintain relative safety, and avoid excessive nuisance.

Condition This descriptor can be encapsulated by three terms, namely **Health (H)**, **Structure (S)** and **Form (F)**.

Health is largely governed by the ease in which the metabolic functions are occurring throughout the tree. Symptoms of health include the amount, distribution, density, size and colour of the foliage.

**ADVERTISED
PLAN**

Structure refers to the structural stability of the tree and its branches. A well structured tree is not likely to shed branches or stems, or snap in the trunk or blow over, whereas a poorly structured tree is more likely to.

Form basically refers to the symmetry of the tree. A tree with a straight trunk and symmetrical crown and evenly distributed branches is referred to as having good form, whilst a lopsided leaning tree may have fair – poor form.

Worthiness of Retention (WOR):

The worth for retention of a tree is based on the assumption that the site is to be re-developed, and that there is the opportunity for new tree planting. It is based on a number of factors. These factors are:

1. structure, health, form and safe useful life expectancy,
2. size, prominence in the landscape,
3. species rarity,
4. whether indigenous,
5. whether an environmental weed.
6. importance for habitat of native wildlife
7. whether of historical or cultural interest

Any tree with a WOR rating of 3 or less should be seriously considered for removal before development begins because it is dead, nearly dead or dangerous, a weed, is causing or is likely to cause a severe nuisance in the near future, or just of very little significance and readily replaceable with new plantings. Trees rated 4-6 are of some significance. Some of these trees may respond to treatments such as formative pruning, removal of dead wood, weight reduction pruning etc. Trees rated 7 or higher are of high significance (the higher the ranking the more so), primarily because of their good health, structure, form, prominence in the landscape and SULE, although all they still may need substantial works done on them as already detailed, if they are to be retained.

Notional Root Zone (NRZ)

The zone enclosed by a radius of 12 times the DSH that is a primary trigger for arboricultural input on a development site. A 10% area encroachment of the NRZ area is regarded as minor, a 10-20% encroachment as moderate and > 20% as major.

Structural Root Zone

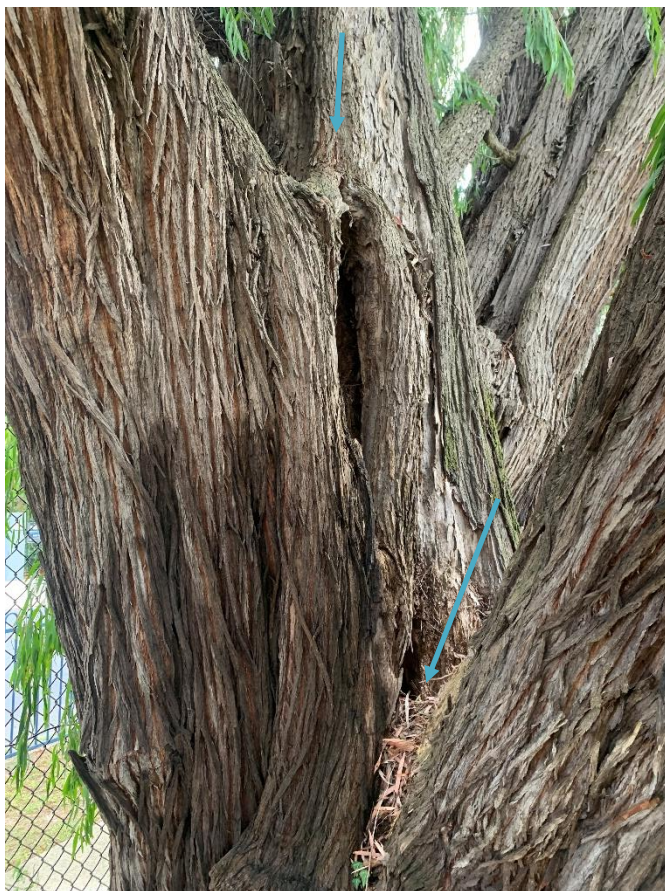
According to the Aus Std. AS 4970:2009, the structural root zone is the area of the root plate required for a tree's stability. In order to calculate the indicative radius of such a zone from the trunk centre, according to the Aus Std., one uses the following formula: SRZ radius is $(D \times 50)^{0.42} \times 0.64$, where D is the trunk diameter in metres taken from just above the root buttress. The minimum indicative SRZ radius is 1.5m for any tree, irrespective of how small. A graph is provided in the Aust Std, with a curve depicted relating the SRZ to trunk diameter. Unfortunately, the calculated figures do not match those derived from the graph. The Aust Std. does not mention from where this formula is taken although acknowledges the publication 'Mattheck, C. & Breloer, H. (1994) *The Body Language of Trees* HMSO Publications' in the preface and bibliography. The figures derived from the graph for the indicative SRZs are far greater than those implied from the curve of 95% fit for the results from studies of upturned root plates of windblown and winched over German trees (see Mattheck, C. & Breloer, H. (1994). Furthermore the figures derived from the graph for the indicative SRZs are far greater than what one calculates them to be, using the formula provided by the Standard i.e. $(D \times 50)^{0.42} \times 0.64$. The calculated figures according to the Aust Std. are considerably greater for small and large trunks than those of Mattheck & Breloer.

In reality, the radii calculated whether by graph or using the formula, are much larger than necessary, except in cases such as where the soils are very shallow or where the structural root development is unidirectional or highly asymmetric for some reason, and the excavation is to be within the zone of the roots. **The structural stability generally depends far more on what proportion of the circumference of the tree is to be excavated than the actual distance of excavation from a tree, and this is often not taken into account quite when using the SRZ.**

**ADVERTISED
PLAN**



Tree 1



The arrows point to two active splitting zones in Tree 1

**ADVERTISED
PLAN**



3

2

17



4

6

**ADVERTISED
PLAN**



**ADVERTISED
PLAN**



15



16

17

**ADVERTISED
PLAN**



17

18



17

**ADVERTISED
PLAN**



20



26

24

25

**ADVERTISED
PLAN**



26

27

28



27

28

29

**ADVERTISED
PLAN**



30



30

29

28

**ADVERTISED
PLAN**



32

31



34

36

35

33

**ADVERTISED
PLAN**



35



37

**ADVERTISED
PLAN**

The following three photos are of the base of Tree 33



**ADVERTISED
PLAN**



ADVERTISED PLAN



Pronounced lifting of footpath opposite Tree 42

39



42

47-56

**ADVERTISED
PLAN**



57-66



66-73

**ADVERTISED
PLAN**