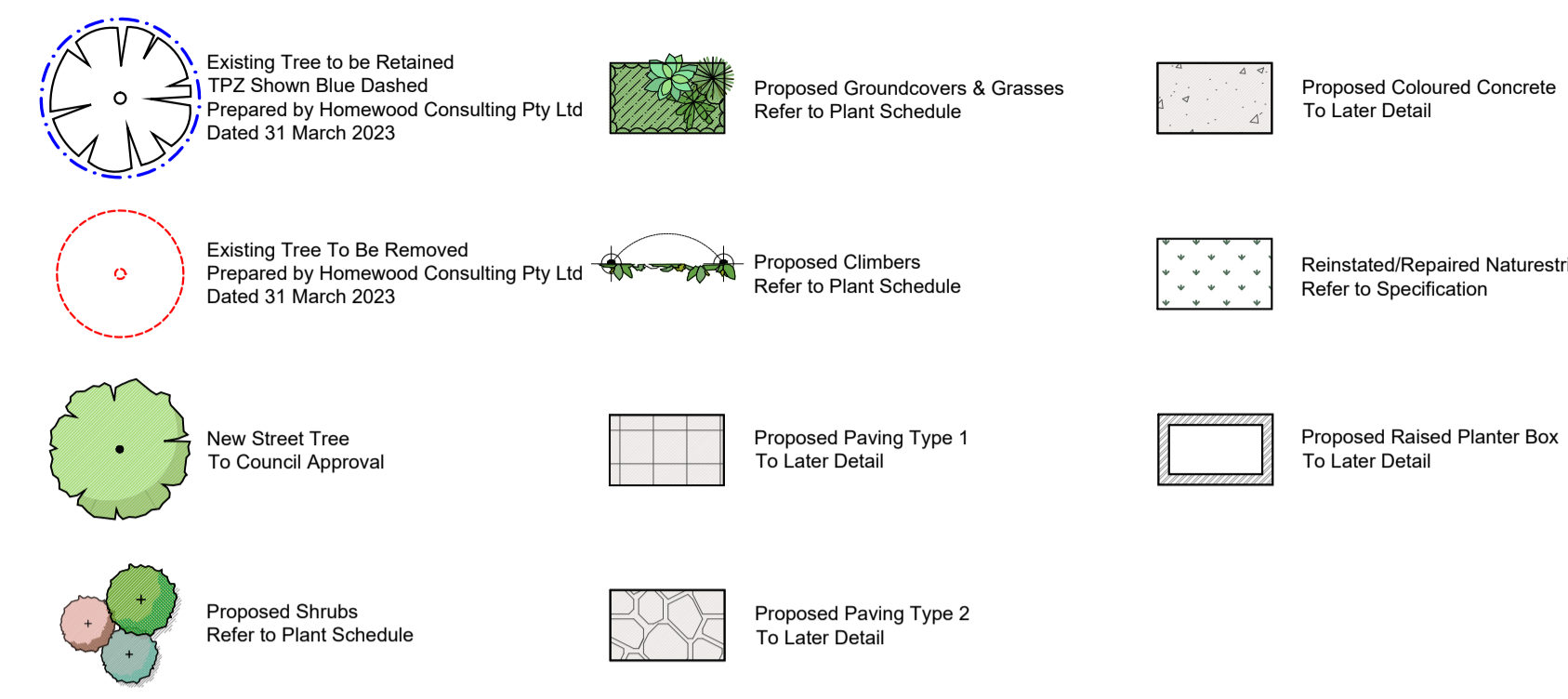


**LEGEND**



**SPECIFICATION NOTES**

**Soil Preparation**  
Crushed rock, concrete spillage and any other material restrictive to plant growth (e.g. large rocks) shall be removed from the site of any planting beds and semi-advanced trees. All trees to be removed shall be stump ground and all rubbish/vegetative spoil is to be preserved so that it does not receive additional compaction from site machinery and so that no rubble or building supplies are stored in these areas.

**Planting**  
Planting shall be carried out using accepted horticultural practices with all plants conforming to the species, size and quantities indicated on the Landscape Plan and Plant Schedule. Plants shall be thoroughly soaked through immersion in water prior to planting and if the planting soil is very dry then the planting hole is also to be filled with water and allowed to drain completely.

**Planting Schedule**  
The planting schedule lists botanical names, common names, dimensions, and quantities for various plants including trees, shrubs, groundcovers, and climbers.

01 Landscape Plan - GF  
1:100 @A1 1:200 @A3

02 Landscape Plan - 1F  
1:100 @A1 1:200 @A3

COPYRIGHT  
This drawing must not be copied in whole or in part without the consent of John Patrick Landscape Architects Pty Ltd  
Do not scale off drawings  
NOT FOR CONSTRUCTION

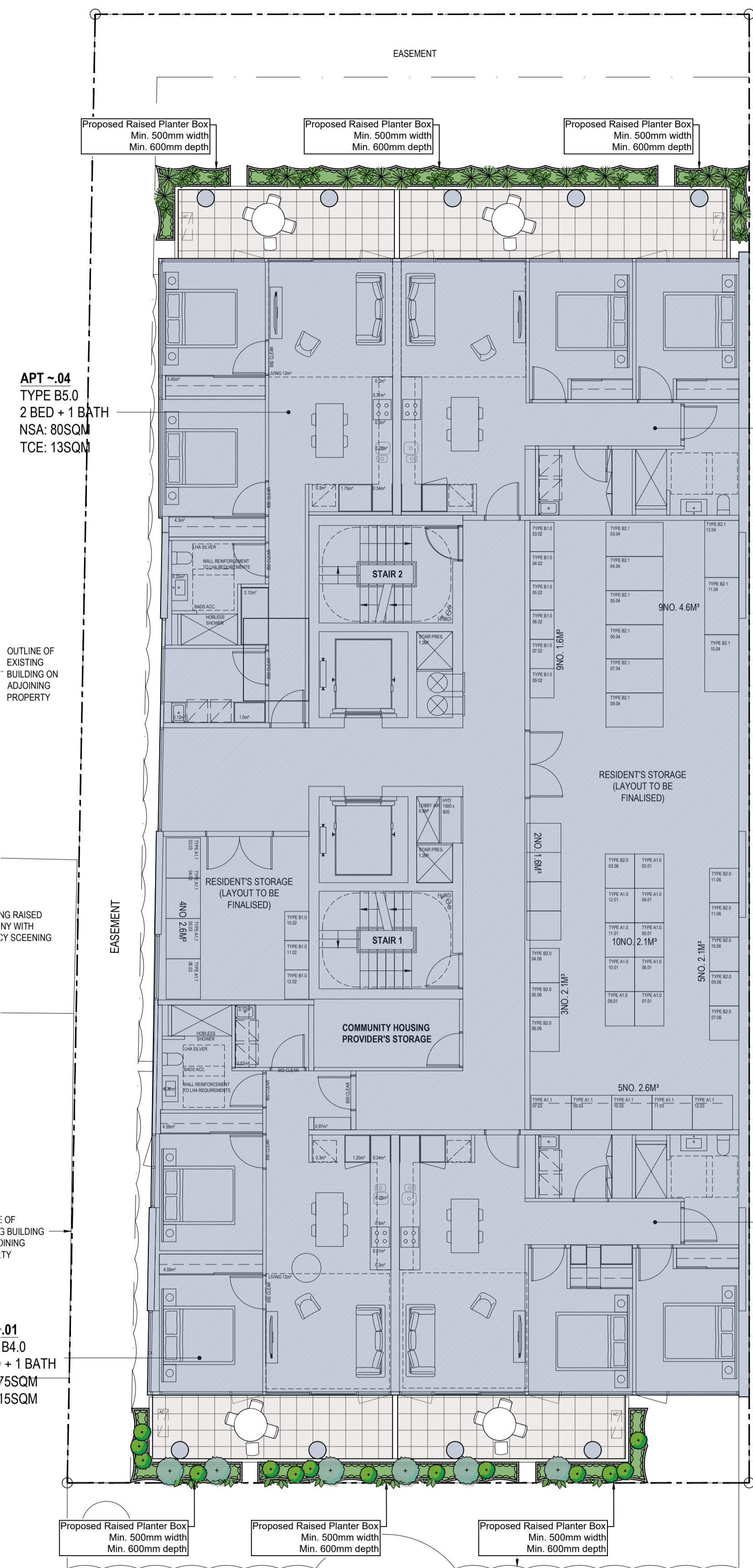
**ADVERTISED PLAN**

This copied document to be made available for the sole purpose of enabling its consideration and review as part of a planning process under the Planning and Environment Act 1987. The document must not be used for any purpose which may breach any copyright

**JOHN PATRICK**  
JOHN PATRICK LANDSCAPE ARCHITECTS PTY LTD  
324 Victoria Street, Richmond, VIC 3121  
T +61 3 9429 4855  
F +61 3 9429 8211  
admin@johnpatrick.com.au  
www.johnpatrick.com.au

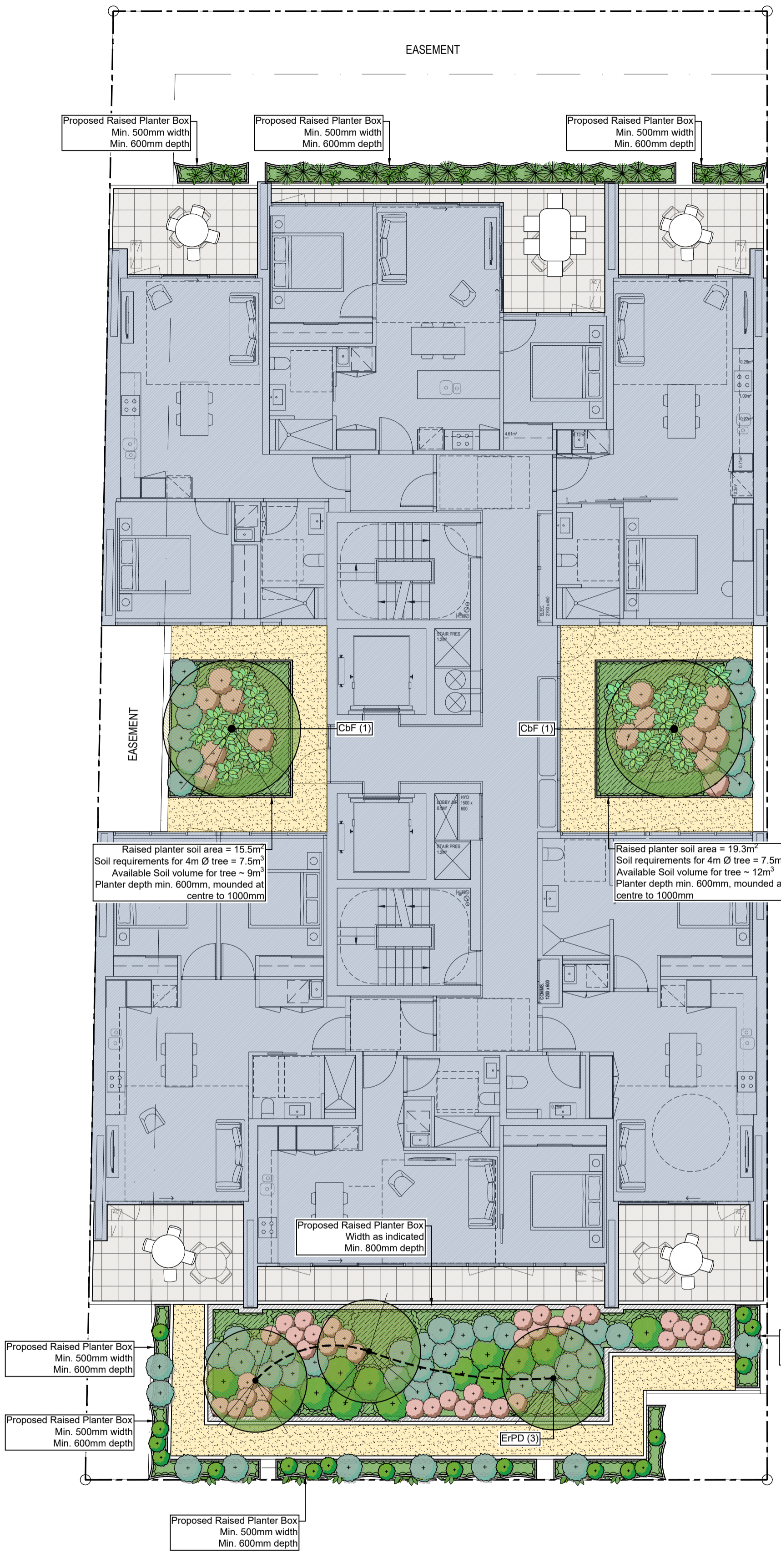
REVISION: Architectural Changes, MS, MS, MS  
DATE: 25.08.2023, 03.05.2024, 10.05.2024  
BY: MS, MS, MS

CLIENT: CAAMCO 11 Beach Street Pty Ltd  
DRAWING: Landscape Plan - GF & 1F for Town Planning  
PROJECT: Proposed Development  
SCALE: 1:100 @A1  
DATE: JULY 2023  
DRAWN: CY  
CHECKED: MS  
JOB NO: 23-314  
DWG NO: TP01  
CAD FILE: 23-314 TP-C.dwg



**BEACH STREET**

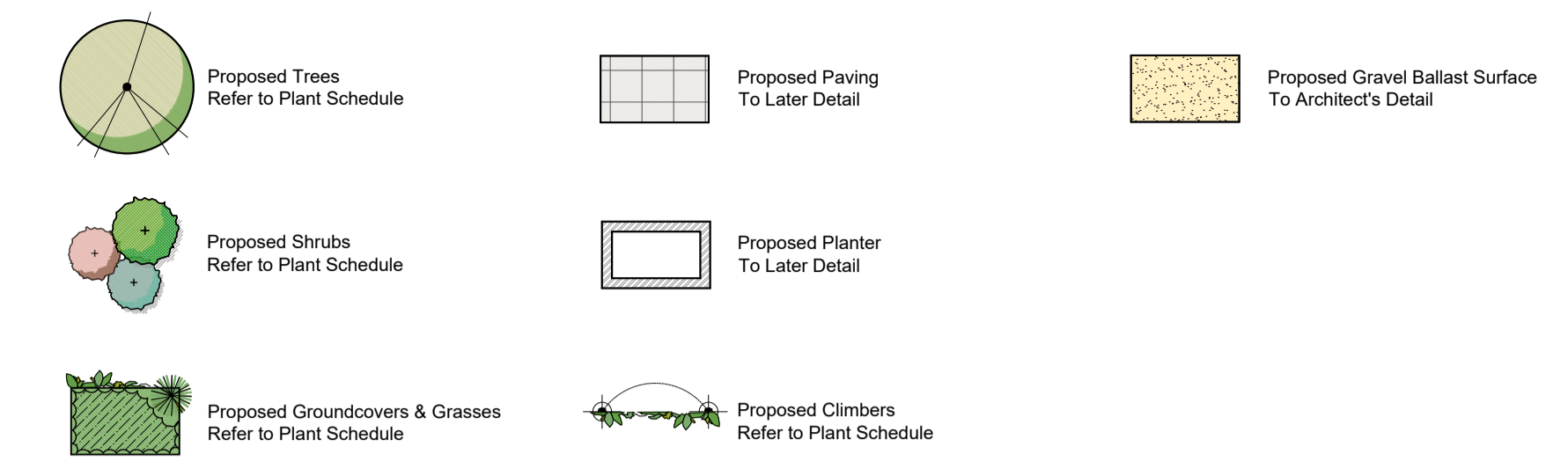
01 Landscape Plan - 2F  
1:100 @A1 1:200 @A3



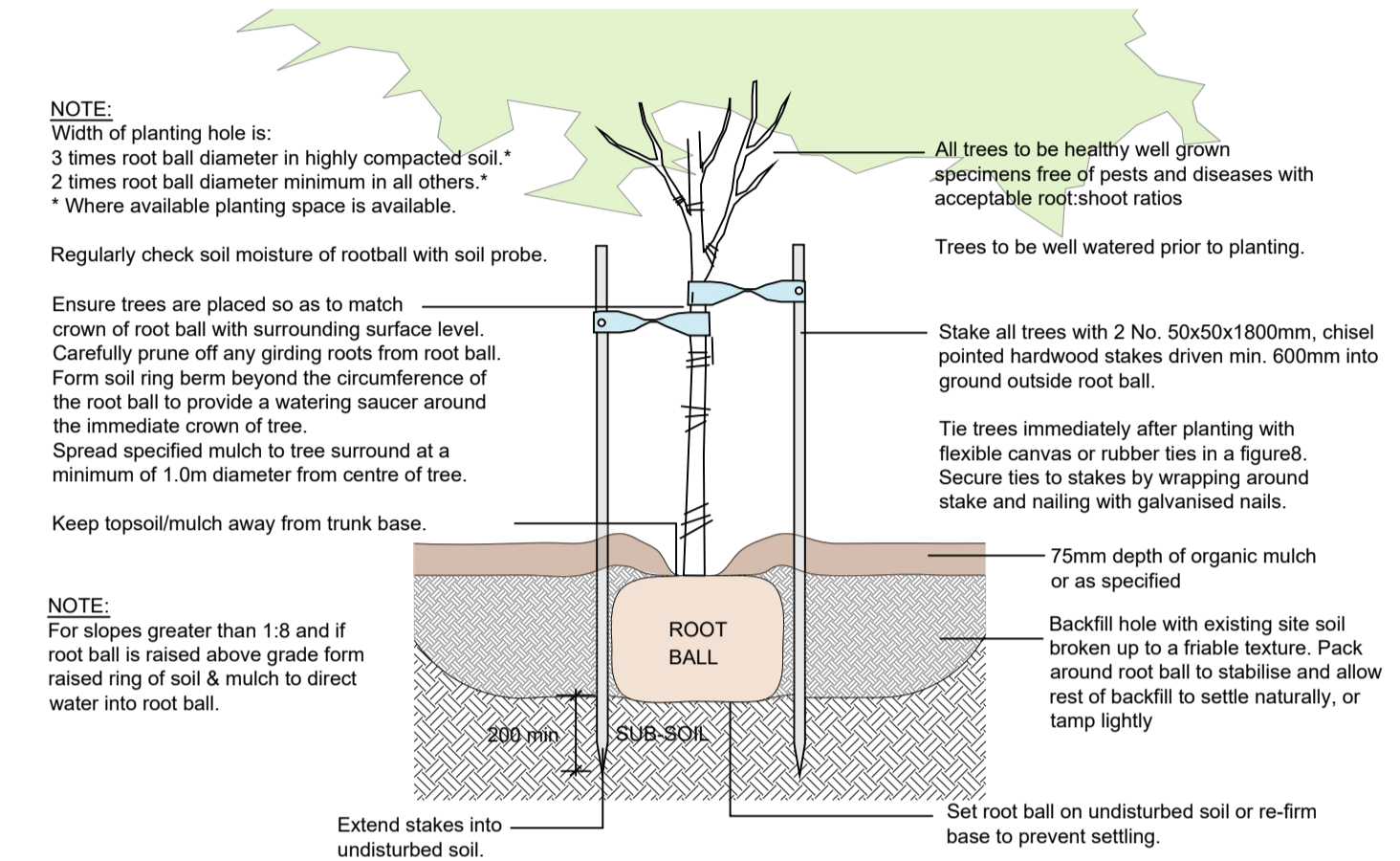
**BEACH STREET**

02 Landscape Plan - 3F  
1:100 @A1 1:200 @A3

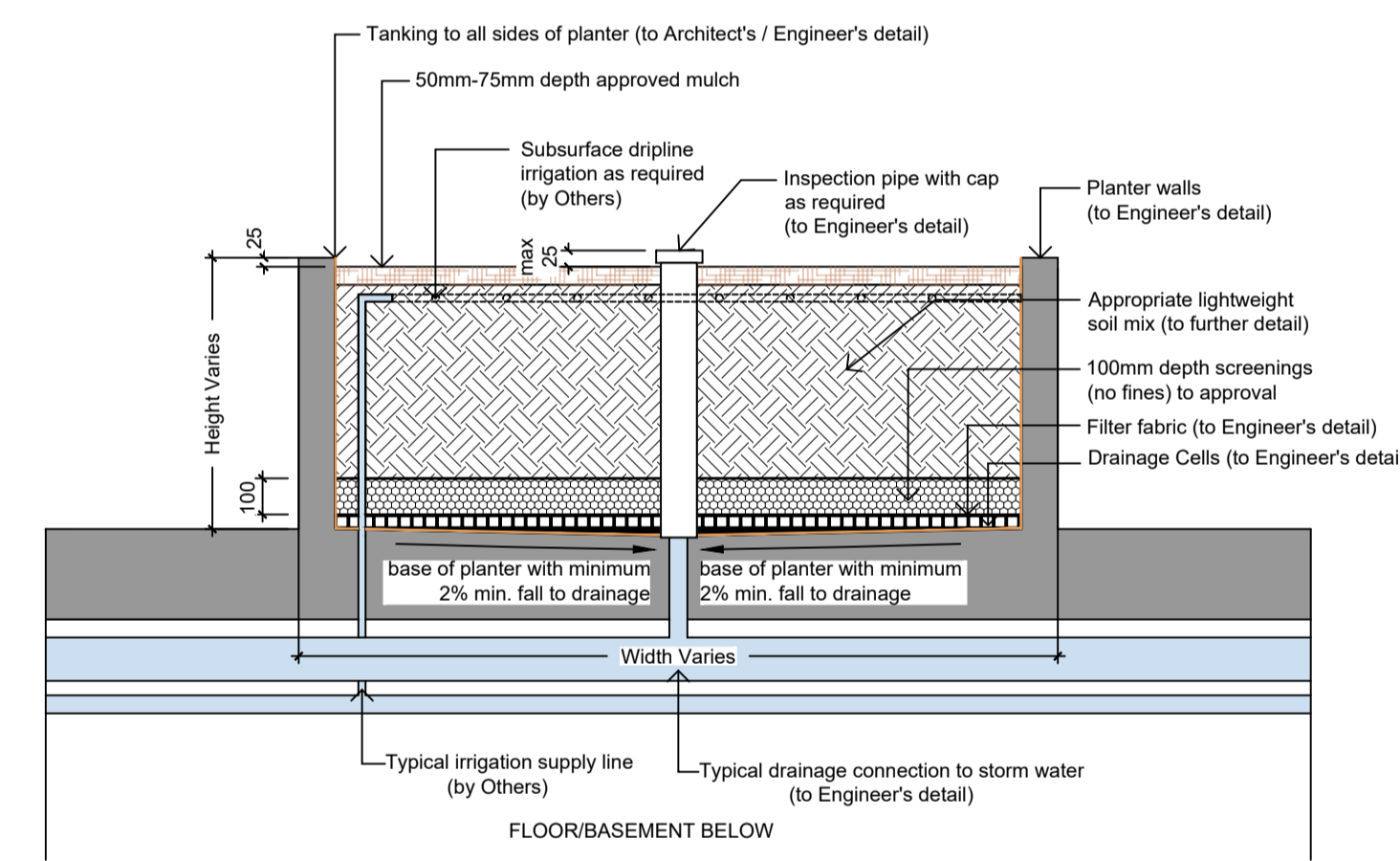
**LEGEND**



**TYPICAL PLANTING DETAILS**



D1 TYPICAL TREE PLANTING DETAIL  
Scale N.T.S.



D2 TYPICAL LIGHTWEIGHT PLANTER BOX DETAIL  
Scale 1:20

**PLANT SCHEDULE**

SYM	BOTANICAL NAME	COMMON NAME	D/E/Ex*	HEIGHT X WIDTH AT MATURITY	MIN SUPPLY SIZE	QTY
<b>TREES</b>						
CbF	<i>Carpinus betulus</i> 'Fastigiata'	Fastigiata Hornbeam	D/Ex	10 x 4m	50cm/2.0mH	2
EPD	<i>Elaeagnus reticulata</i> 'Prima Donna'	Pink Flowering Blueberry Ash	E/N	5 x 3m	40cm/1.2mH	3
<b>TOTAL</b>						<b>5</b>
<b>SHRUBS</b>						
Bmm	<i>Buxus microphylla</i> var. <i>microphylla</i>	Dwarf Japanese Box	E/Ex	0.4-0.5 x 0.5m	140mm pot	
PWD	<i>Pittosporum tobira</i> 'Wheeler's Dwarf'	Dwarf Japanese Mock Orange	E/Ex	1.2 x 1.5m	200mm pot	
PML	<i>Plectranthus</i> 'Mona Lavender'	Liac Plectranthus	E/Ex	0.8 x 0.6m	200mm pot	
Ru	<i>Rhaphiolepis umbellata</i>	Yeddo Hawthorn	E/Ex	1.5 x 1.5m	200mm pot	
<b>TOTAL</b>						
<b>GROUNDCOVERS AND GRASSES</b>						
Ac	<i>Anthropodium cirratum</i>	Renga Lily	E/Ex	0.7 x 0.7m	140mm pot	
As	<i>Austrostipa stipoides</i>	Prickly Spear-grass	E/N	0.8 x 0.8m	140mm pot	
Dp	<i>Dianella brevicaulis</i>	Small-flow er Flax Lily	E/N	0.5 x 0.4m	tubestock	
Mp	<i>Myoporum parvifolium</i>	Creeping Boobialla	E/N	0.2 x 1-3m	140mm pot	
Po	<i>Paterosium occidentale</i>	Long-leaf Purple Flag	E/N	0.3 x 0.5m	140mm pot	
RoP	<i>Rosmarinus officinalis</i> 'Santa Barbara'	Santa Barbara Rosemary	E/Ex	0.5 x 1.5m	140mm pot	
TaFM	<i>Trachelospermum asiaticum</i> 'Flat Mat'	Yellow Star Jasmine	E/Ex	0.4 x 3m	140mm pot	
Vh	<i>Viola hederacea</i>	Native Violet	E/N	0.15 x Spreading	140mm pot	
<b>TOTAL</b>						

\*D/E = Deciduous/Evergreen N/Ex = Native/Exotic

**ADVERTISED PLAN**

COPYRIGHT  
This drawing must not be copied in whole or in part without the consent of John Patrick Landscape Architects Pty Ltd.  
Do not scale off drawings.  
NOT FOR CONSTRUCTION

This copied document to be made available for the sole purpose of enabling its consideration and review as part of a planning process under the Planning and Environment Act 1987. The document must not be used for any purpose which may breach any copyright

**JOHN PATRICK**  
LANDSCAPE ARCHITECTS PTY LTD  
324 Victoria Street, Richmond, VIC 3121  
T +61 3 9429 4855  
F +61 3 9429 8211  
admin@johnpatrick.com.au  
www.johnpatrick.com.au

REVISION  
A Architectural Changes  
B Architectural Changes  
C Architectural Changes

DATE  
25.08.2023 MS  
03.05.2024 MS  
10.05.2024 MS

CLIENT  
**CAAMCO 11 Beach Street Pty Ltd** Landscape Plan - 2F & 3F for Town Planning

DRAWING  
**Proposed Development**

SCALE  
1:100 @A1  
DATE  
JULY 2023  
DRAWN  
CY  
CHECKED  
MS  
JOB NO  
23-314  
DWG NO  
TP02  
CAD FILE  
23-314 TP-C.dwg