

This report provides information to support an application to remove, destroy or lop native vegetation in accordance with the *Guidelines for the removal, destruction or lopping of native vegetation*. The report **is not an assessment by DELWP** of the proposed native vegetation removal. Native vegetation information and offset requirements have been determined using spatial data provided by the applicant or their consultant.

Date of issue: 25/06/2024
Time of issue: 12:16 pm

Report ID: ERM_2024_006

Project ID	WimmeraWF_HabitatZones_Impacts_20240613_VICGRID94
------------	---

Assessment pathway

Assessment pathway	Detailed Assessment Pathway
Extent including past and proposed	0.951 ha
Extent of past removal	0.000 ha
Extent of proposed removal	0.951 ha
No. Large trees proposed to be removed	0
Location category of proposed removal	Location 2 The native vegetation is in an area mapped as an endangered Ecological Vegetation Class (as per the statewide EVC map). Removal of less than 0.5 hectares of native vegetation in this location will not have a significant impact on any habitat for a rare or threatened species.

This copied document to be made available for the sole purpose of enabling its consideration and review as part of a planning process under the Planning and Environment Act 1987. The document must not be used for any purpose which may breach any copyright

1. Location map



**ADVERTISED
PLAN**



Environment,
Land, Water
and Planning

Offset requirements if a permit is granted

Any approval granted will include a condition to obtain an offset that meets the following requirements:

General offset amount¹	0.164 general habitat units
Vicinity	Wimmera Catchment Management Authority (CMA) or Horsham Rural City Council
Minimum strategic biodiversity value score ²	0.092
Large trees	0 large trees

NB: values within tables in this document may not add to the totals shown above due to rounding

Appendix 1 includes information about the native vegetation to be removed

Appendix 2 includes information about the rare or threatened species mapped at the site.

Appendix 3 includes maps showing native vegetation to be removed and extracts of relevant species habitat importance maps

ADVERTISED PLAN

This copied document to be made available for the sole purpose of enabling its consideration and review as part of a planning process under the Planning and Environment Act 1987. The document must not be used for any purpose which may breach any copyright

¹ The general offset amount required is the sum of all general habitat units in Appendix 1.

² Minimum strategic biodiversity score is 80 per cent of the weighted average score across habitat zones where a general offset is required

Next steps

Any proposal to remove native vegetation must meet the application requirements of the Detailed Assessment Pathway and it will be assessed under the Detailed Assessment Pathway.

If you wish to remove the mapped native vegetation you are required to apply for a permit from your local council. Council will refer your application to DELWP for assessment, as required. **This report is not a referral assessment by DELWP.**

This *Native vegetation removal report* must be submitted with your application for a permit to remove, destroy or lop native vegetation.

Refer to the *Guidelines for the removal, destruction or lopping of native vegetation* (the Guidelines) for a full list of application requirements. This report provides information that meets the following application requirements:

- The assessment pathway and reason for the assessment pathway
- A description of the native vegetation to be removed (partly met)
- Maps showing the native vegetation and property (partly met)
- Information about the impacts on rare or threatened species.
- The offset requirements determined in accordance with section 5 of the Guidelines that apply if approval is granted to remove native vegetation.

Additional application requirements must be met including:

- Topographical and land information
- Recent dated photographs
- Details of past native vegetation removal
- An avoid and minimise statement
- A copy of any Property Vegetation Plan that applies
- A defensible space statement as applicable
- A statement about the Native Vegetation Record as applicable
- A site assessment report including a habitat structure assessment of any patches of native vegetation and details of trees
- An offset statement that explains that an offset has been identified and how it will be secured.

This copied document to be made available for the sole purpose of enabling its consideration and review as part of a planning process under the Planning and Environment Act 1987. The document must not be used for any purposes which breach any copyright.

ADVERTISED PLAN

© The State of Victoria Department of Environment, Land, Water and Planning Melbourne 2024

This work is licensed under a Creative Commons Attribution 4.0 International licence. You are free to re-use the work under that licence, on the condition that you credit the State of Victoria as author. The licence does not apply to any images, photographs or branding, including the Victorian Coat of Arms, the Victorian Government logo and the Department of Environment, Land, Water and Planning logo. To view a copy of this licence, visit <http://creativecommons.org/licenses/by/3.0/au/deed.en>

Authorised by the Victorian Government, 8 Nicholson Street, East Melbourne.

For more information contact the DELWP Customer Service Centre 136 186

www.delwp.vic.gov.au

Disclaimer

This publication may be of assistance to you but the State of Victoria and its employees do not guarantee that the publication is without flaw of any kind or is wholly appropriate for your particular purposes and therefore disclaims all liability for any error, loss or other consequence which may arise from you relying on any information in this publication.

Obtaining this publication does not guarantee that an application will meet the requirements of Clauses 52.16 or 52.17 of the Victoria Planning Provisions and Victorian planning schemes or that a permit to remove native vegetation will be granted.

Notwithstanding anything else contained in this publication, you must ensure that you comply with all relevant laws, legislation, awards or orders and that you obtain and comply with all permits, approvals and the like that affect, are applicable or are necessary to undertake any action to remove, lop or destroy or otherwise deal with any native vegetation or that apply to matters within the scope of Clauses 52.16 or 52.17 of the Victoria Planning Provisions and Victorian planning schemes.

ADVERTISED PLAN

Appendix 1: Description of native vegetation to be removed

The species-general offset test was applied to your proposal. This test determines if the proposed removal of native vegetation has a proportional impact on any rare or threatened species habitats above the species offset threshold. The threshold is set at 0.005 per cent of the mapped habitat value for a species. When the proportional impact is above the species offset threshold a species offset is required. This test is done for all species mapped at the site. Multiple species offsets will be required if the species offset threshold is exceeded for multiple species.

Where a zone requires species offset(s), the species habitat units for each species in that zone is calculated by the following equation in accordance with the Guidelines:

$$\text{Species habitat units} = \text{extent} \times \text{condition} \times \text{species landscape factor} \times 2, \text{ where the species landscape factor} = 0.5 + (\text{habitat importance score}/2)$$

The species offset amount(s) required is the sum of all species habitat units per zone

Where a zone does not require a species offset, the general habitat units in that zone is calculated by the following equation in accordance with the Guidelines:

$$\text{General habitat units} = \text{extent} \times \text{condition} \times \text{general landscape factor} \times 1.5, \text{ where the general landscape factor} = 0.5 + (\text{strategic biodiversity value score}/2)$$

The general offset amount required is the sum of all general habitat units per zone.

Native vegetation to be removed

This copied document to be made available
for the sole purpose of enabling
its consideration and review as
part of a planning process under the
Planning and Environment Act 1987.
The document must not be used for any
purpose which may breach any
copyright

Information provided by or on behalf of the applicant in a GIS file										Information calculated by EnSym		
Zone	Type	BioEVC	BioEVC conservation status	Large tree(s)	Partial removal	Condition score	Extent	Extent without overlap	SBV score	HI score	Habitat units	Offset type
1-G	Patch	wim_0826	Endangered	0	no	0.250	0.043	0.043	0.100		0.009	General
1-D	Patch	wim_0826	Endangered	0	no	0.210	0.010	0.010	0.100		0.002	General
1-C4	Patch	wim_0826	Endangered	0	no	0.200	0.042	0.042	0.110		0.007	General
1-H	Patch	wim_0826	Endangered	0	no	0.210	0.143	0.143	0.100		0.025	General
1-I	Patch	wim_0826	Endangered	0	no	0.300	0.014	0.014	0.430		0.005	General
1-M	Patch	wim_0826	Endangered	0	no	0.180	0.050	0.050	0.116		0.008	General
1-C5	Patch	wim_0826	Endangered	0	no	0.200	0.129	0.129	0.131		0.022	General
1-C7	Patch	wim_0826	Endangered	0	no	0.200	0.126	0.126	0.100		0.021	General
1-B3	Patch	wim_0826	Endangered	0	no	0.200	0.006	0.006	0.110		0.001	General
1-B3	Patch	wim_0826	Endangered	0	no	0.200	0.000	0.000	0.110		0.000	General
1-B3	Patch	wim_0826	Endangered	0	no	0.200	0.008	0.008	0.110		0.001	General

ADVERTISED PLAN

Information provided by or on behalf of the applicant in a GIS file							Information calculated by EnSym					
Zone	Type	BioEVC	BioEVC conservation status	Large tree(s)	Partial removal	Condition score	Polygon Extent	Extent without overlap	SBV score	HI score	Habitat units	Offset type
1-F	Patch	wim_0132	Endangered	0	no	0.250	0.008	0.008	0.110		0.002	General
1-F	Patch	wim_0132	Endangered	0	no	0.250	0.000	0.000	0.110		0.000	General
1-F	Patch	wim_0132	Endangered	0	no	0.250	0.010	0.010	0.113		0.002	General
1-F	Patch	wim_0132	Endangered	0	no	0.250	0.000	0.000	0.120		0.000	General
1-E	Patch	wim_0826	Endangered	0	no	0.210	0.000	0.000	0.120		0.000	General
1-E	Patch	wim_0826	Endangered	0	no	0.210	0.002	0.002	0.129		0.000	General
1-E	Patch	wim_0826	Endangered	0	no	0.210	0.000	0.000	0.130		0.000	General
1-E	Patch	wim_0826	Endangered	0	no	0.210	0.000	0.000	0.130		0.000	General
1-B1	Patch	wim_0826	Endangered	0	no	0.200	0.019	0.019	0.100		0.003	General
1-B1	Patch	wim_0826	Endangered	0	no	0.200	0.008	0.008	0.100		0.001	General
1-C1	Patch	wim_0826	Endangered	0	no	0.200	0.000	0.000	0.100		0.000	General
1-C1	Patch	wim_0826	Endangered	0	no	0.200	0.000	0.000	0.100		0.000	General
1-C1	Patch	wim_0826	Endangered	0	no	0.200	0.022	0.022	0.100		0.004	General
1-C1	Patch	wim_0826	Endangered	0	no	0.200	0.047	0.047	0.107		0.008	General
1-C2	Patch	wim_0826	Endangered	0	no	0.200	0.000	0.000	0.110		0.000	General
1-C2	Patch	wim_0826	Endangered	0	no	0.200	0.000	0.000	0.110		0.000	General
1-C2	Patch	wim_0826	Endangered	0	no	0.200	0.001	0.001	0.110		0.000	General
1-C3	Patch	wim_0826	Endangered	0	no	0.200	0.003	0.003	0.104		0.001	General
1-C3	Patch	wim_0826	Endangered	0	no	0.200	0.120	0.120	0.102		0.020	General
1-B2	Patch	wim_0826	Endangered	0	no	0.200	0.019	0.019	0.105		0.003	General
1-B2	Patch	wim_0826	Endangered	0	no	0.200	0.027	0.027	0.108		0.005	General
1-B2	Patch	wim_0826	Endangered	0	no	0.200	0.001	0.001	0.100		0.000	General

This copied document to be made available for the sole purpose of enabling its consideration and review as part of a planning process under the Planning and Environment Act 1987. The document must not be used for any purpose which may breach any copyright.

Information provided by or on behalf of the applicant in a GIS file							Information calculated by EnSym					
Zone	Type	BioEVC	BioEVC conservation status	Large tree(s)	Partial removal	Condition score	Polygon Extent	Extent without overlap	SBV score	HI score	Habitat units	Offset type
1-B2	Patch	wim_0826	Endangered	0	no	0.200	0.003	0.003	0.100		0.000	General
1-B2	Patch	wim_0826	Endangered	0	no	0.200	0.001	0.001	0.100		0.000	General
1-B2	Patch	wim_0826	Endangered	0	no	0.200	0.002	0.002	0.100		0.000	General
1-B2	Patch	wim_0826	Endangered	0	no	0.200	0.005	0.005	0.100		0.001	General
1-B2	Patch	wim_0826	Endangered	0	no	0.200	0.000	0.000	0.100		0.000	General
1-B2	Patch	wim_0826	Endangered	0	no	0.200	0.005	0.005	0.100		0.001	General
1-L	Patch	wim_0132	Endangered	0	no	0.280	0.003	0.003	0.110		0.001	General
1-L	Patch	wim_0132	Endangered	0	no	0.280	0.010	0.010	0.110		0.002	General
1-C6	Patch	wim_0826	Endangered	0	no	0.200	0.000	0.000	0.100		0.000	General
1-C6	Patch	wim_0826	Endangered	0	no	0.200	0.000	0.000	0.100		0.000	General
1-C6	Patch	wim_0826	Endangered	0	no	0.200	0.000	0.000	0.100		0.000	General
1-B4	Patch	wim_0826	Endangered	0	no	0.200	0.000	0.000	0.120		0.000	General
1-B4	Patch	wim_0826	Endangered	0	no	0.200	0.000	0.000	0.120		0.000	General
1-B4	Patch	wim_0826	Endangered	0	no	0.200	0.000	0.000	0.120		0.000	General
1-B4	Patch	wim_0826	Endangered	0	no	0.200	0.058	0.058	0.141		0.010	General
1-B4	Patch	wim_0826	Endangered	0	no	0.200	0.004	0.004	0.130		0.001	General

This copied document to be made available for the sole purpose of enabling its consideration and review as part of a planning process under the Planning and Environment Act 1987. The document must not be used for any purpose which may breach any copyright

ADVERTISED PLAN

ADVERTISED PLAN

Appendix 2: Information about impacts to rare or threatened species' habitats on site

This table lists all rare or threatened species' habitats mapped at the site.

Species common name	Species scientific name	Species number	Conservation status	Group	Habitat impacted	% habitat value affected
Erect Peppercress	<i>Lepidium pseudopapillosum</i>	501909	Endangered	Dispersed	Habitat importance map	0.0000
Three-nerve Wattle	<i>Acacia trineura</i>	500096	Vulnerable	Dispersed	Habitat importance map	0.0000
Hairy-pod Wattle	<i>Acacia glandulicarpa</i>	500039	Vulnerable	Dispersed	Habitat importance map	0.0000
Turnip Copperburr	<i>Sclerolaena napiformis</i>	503991	Endangered	Dispersed	Habitat importance map	0.0000
Jericho Wire-grass	<i>Aristida jerichoensis</i> var. <i>subspinulifera</i>	504631	Endangered	Dispersed	Habitat importance map	0.0000
Yellow Burr-daisy	<i>Calotis lappulacea</i>	500598	Rare	Dispersed	Habitat importance map	0.0000
Blue Mallee	<i>Eucalyptus polybractea</i>	501311	Rare	Dispersed	Habitat importance map	0.0000
Silky Umbrella-grass	<i>Digitaria ammophila</i>	501041	Vulnerable	Dispersed	Habitat importance map	0.0000
Yellow-tongue Daisy	<i>Brachyscome chrysoglossa</i>	503654	Vulnerable	Dispersed	Habitat importance map	0.0000
Downy Swainson-pea	<i>Swainsona swainsonioides</i>	503328	Endangered	Dispersed	Habitat importance map	0.0000
Winged New Holland Daisy	<i>Vittadinia pterochaeta</i>	503542	Vulnerable	Dispersed	Habitat importance map	0.0000
Kamarooka Mallee	<i>Eucalyptus froggattii</i>	501279	Rare	Dispersed	Habitat importance map	0.0000
Pale Flax-lily	<i>Dianella</i> sp. aff. <i>longifolia</i> (Riverina)	507399	Vulnerable	Dispersed	Habitat importance map	0.0000
Umbrella Grass	<i>Digitaria divaricatissima</i> var. <i>divaricatissima</i>	501045	Vulnerable	Dispersed	Habitat importance map	0.0000
Swamp Sheoak	<i>Casuarina obesa</i>	500682	Endangered	Dispersed	Habitat importance map	0.0000
Australian Bustard	<i>Ardeotis australis</i>	10176	Critically endangered	Dispersed	Habitat importance map	0.0000
Long Eryngium	<i>Eryngium paludosum</i>	501238	Vulnerable	Dispersed	Habitat importance map	0.0000
Southern Swainson-pea	<i>Swainsona behriana</i>	504944	Rare	Dispersed	Habitat importance map	0.0000

This copied document to be made available for the sole purpose of enabling its consideration and review as part of a planning process under the Planning and Environment Act 1987. The document must not be used for any purpose which may breach any copyright

ADVERTISED PLAN

Small Monkey-flower	<i>Elacholoma prostrata</i>	502196	Rare	Dispersed	Habitat importance map	0.0000
Diosma Rice-flower	<i>Pimelea flava subsp. dichotoma</i>	502518	Rare	Dispersed	Habitat importance map	0.0000
Fine-hairy Spear-grass	<i>Austrostipa puberula</i>	503988	Rare	Dispersed	Habitat importance map	0.0000
Neat Spear-grass	<i>Austrostipa mundula</i>	503281	Rare	Dispersed	Habitat importance map	0.0000
Black Falcon	<i>Falco subniger</i>	10238	Vulnerable	Dispersed	Habitat importance map	0.0000
Slender Club-sedge	<i>Isolepis congrua</i>	501773	Vulnerable	Dispersed	Habitat importance map	0.0000
Fuzzy New Holland Daisy	<i>Vittadinia cuneata var. morrisii</i>	505060	Rare	Dispersed	Habitat importance map	0.0000
Pin Sida	<i>Sida fibulifera</i>	503142	Vulnerable	Dispersed	Habitat importance map	0.0000
Button Immortelle	<i>Leptorhynchos waitzia</i>	501949	Vulnerable	Dispersed	Habitat importance map	0.0000
Tiny Bog-sedge	<i>Schoenus nanus</i>	503950	Rare	Dispersed	Habitat importance map	0.0000
Spiny Lignum	<i>Duma horrida subsp. horrida</i>	502230	Rare	Dispersed	Habitat importance map	0.0000
Hairy Tails	<i>Ptilotus erubescens</i>	502825	Vulnerable	Dispersed	Habitat importance map	0.0000
Mallee Annual-bluebell	<i>Wahlenbergia tumidifruca</i>	504060	Rare	Dispersed	Habitat importance map	0.0000
Buloke Mistletoe	<i>Amyema linophylla subsp. orientalis</i>	500217	Vulnerable	Dispersed	Habitat importance map	0.0000
Club-hair New Holland Daisy	<i>Vittadinia condyloides</i>	503536	Rare	Dispersed	Habitat importance map	0.0000
Inland Pomaderris	<i>Pomaderris paniculosa subsp. paniculosa</i>	503943	Vulnerable	Dispersed	Habitat importance map	0.0000
Dwarf Brooklime	<i>Gratiola pumilo</i>	503753	Rare	Dispersed	Habitat importance map	0.0000
Half-bearded Spear-grass	<i>Austrostipa hemipogon</i>	503985	Rare	Dispersed	Habitat importance map	0.0000
Buloke	<i>Allocasuarina luehmannii</i>	500678	Endangered	Dispersed	Habitat importance map	0.0000
Umbrella Wattle	<i>Acacia oswaldii</i>	500070	Vulnerable	Dispersed	Habitat importance map	0.0000
Dark Wire-grass	<i>Aristida calycina var. calycina</i>	503630	Rare	Dispersed	Habitat importance map	0.0000
Arching Flax-lily	<i>Dianella sp. aff. longifolia (Benambra)</i>	505560	Vulnerable	Dispersed	Habitat importance map	0.0000
Riverine Flax-lily	<i>Dianella porracea</i>	504266	Vulnerable	Dispersed	Habitat importance map	0.0000

This copied document to be made available
 for the sole purpose of enabling
 its consideration and review as
 part of a planning process under the
 Planning and Environment Act 1987.
 The document must not be used for any
 purpose which may breach any
 copyright

Habitat group

- Highly localised habitat means there is 2000 hectares or less mapped habitat for the species
- Dispersed habitat means there is more than 2000 hectares of mapped habitat for the species

Habitat impacted

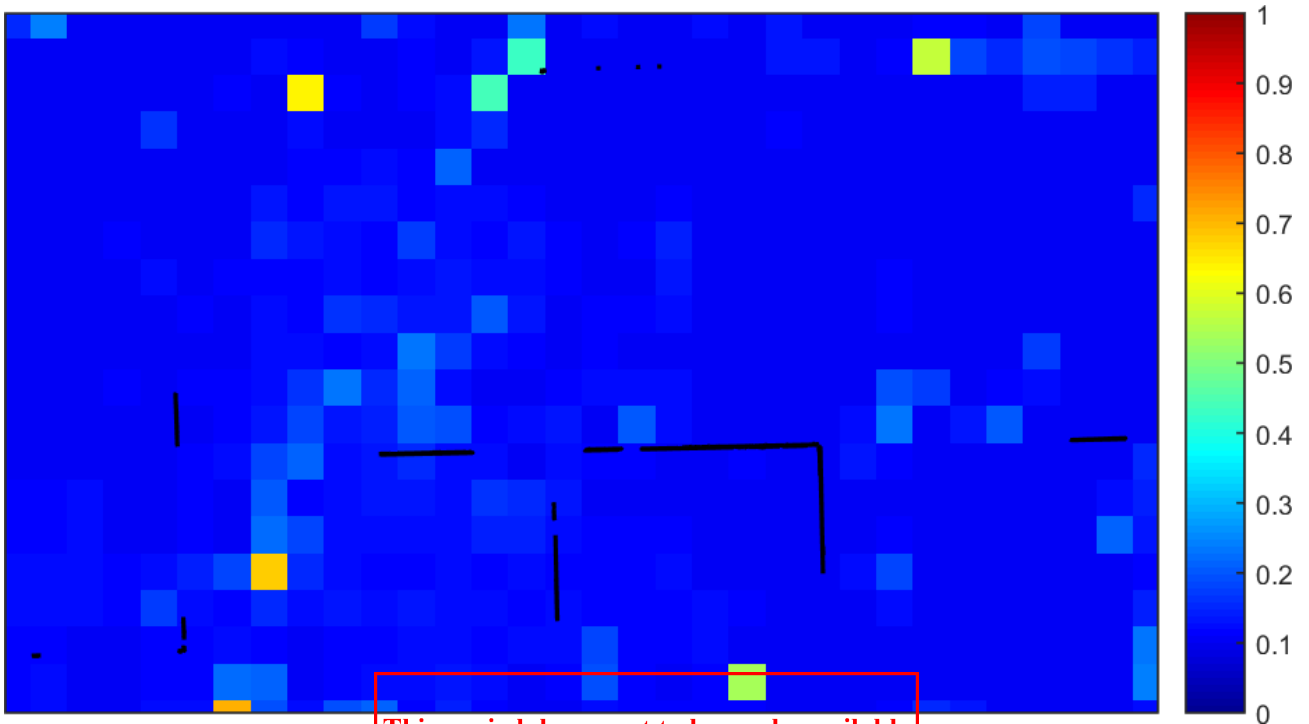
- Habitat importance maps are the maps defined in the Guidelines that include all the mapped habitat for a rare or threatened species
- Top ranking maps are the maps defined in the Guidelines that depict the important areas of a dispersed species habitat, developed from the highest habitat importance scores in dispersed species habitat maps and selected VBA records
- Selected VBA record is an area in Victoria that represents a large population, roosting or breeding site etc.

ADVERTISED PLAN

**This copied document to be made available
for the sole purpose of enabling
its consideration and review as
part of a planning process under the
Planning and Environment Act 1987.
The document must not be used for any
purpose which may breach any
copyright**

Appendix 3 – Images of mapped native vegetation

2. Strategic biodiversity values map



3. Aerial photograph showing mapped native vegetation



↑ North

0 1 2
kilometres

**ADVERTISED
PLAN**

4. Map of the property in context



Yellow boundaries denote areas of proposed native vegetation removal.

This copied document to be made available for the sole purpose of enabling its consideration and review as part of a planning process under the Planning and Environment Act 1987. The document must not be used for any purpose which may breach any copyright

**ADVERTISED
PLAN**