

**LEGEND 03:**

-  **EXISTING TREES TO BE RETAINED**  
RETAIN THE EXISTING TREES & PROTECT THEM IN ACCORDANCE WITH THE ARBORIST'S REPORT & THE AUSTRALIAN STANDARD AS4970
-  **EXISTING TREE TO BE REMOVED**  
STREET TREES PROPOSED TO BE REMOVED - TO COUNCIL'S APPROVAL. REFER TO THE ARBORIST'S REPORT
-  **SYNTHETIC GRASSED AREAS**  
SYNTHETIC GRASS 30-40mm PILE
-  **NATURAL GRASSED AREAS**  
HARDY, DROUGHT-TOLERANT SPECIES OF GRASS.
-  **GRAVELED AREAS**  
GRAVELED AREAS WITH 75mm DEEP OF BROWN DECOMPOSED GRANITIC SAND, WITH TIMBER EDGING. REFER TO THE ENGINEER'S DETAILS.
-  **CONCRETE PAVING**  
CONCRETE PAVING; PLAIN AND / OR EXPOSED AGGREGATE SURFACES
-  **NEW PLANTS**  
REFER TO THE PLANT SCHEDULE FOR INDIGENOUS SPECIES AND SIZES.
-  **RAINGARDEN PLANTS**  
REFER TO THE PLANT SCHEDULE FOR INDIGENOUS SPECIES AND SIZES.
-  **WASTE BIN**  
STEEL WHEELIE BIN ENCLOSURE, WITH CONVEX CANOPY.
-  **RECYCLE BIN**  
STEEL WHEELIE BIN ENCLOSURE, WITH CONVEX CANOPY.
-  **TREE SURROUND**  
PLASTIC TREE SURROUNDS AROUND ALL TREES IN GRASS AND PAVING
-  **BENCH SEATS 1800 LONG**  
BENCH WITHOUT BACKS, DDA COMPLIANT
-  **SEAT 1800 LONG**  
SEAT WITH ARMRESTS & BACK, DDA COMPLIANT
-  **TABLES 2100 LONG**  
TABLE WITH INSET LEGS FOR DDA COMPLIANCE
-  **PLATFORM BENCHES**
-  **BOULDERS**  
ROCKS & BOULDERS TO GARDEN BEDS IN A RANGE OF GELOPOGY TYPES, SIZES AND COLOURS

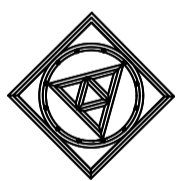
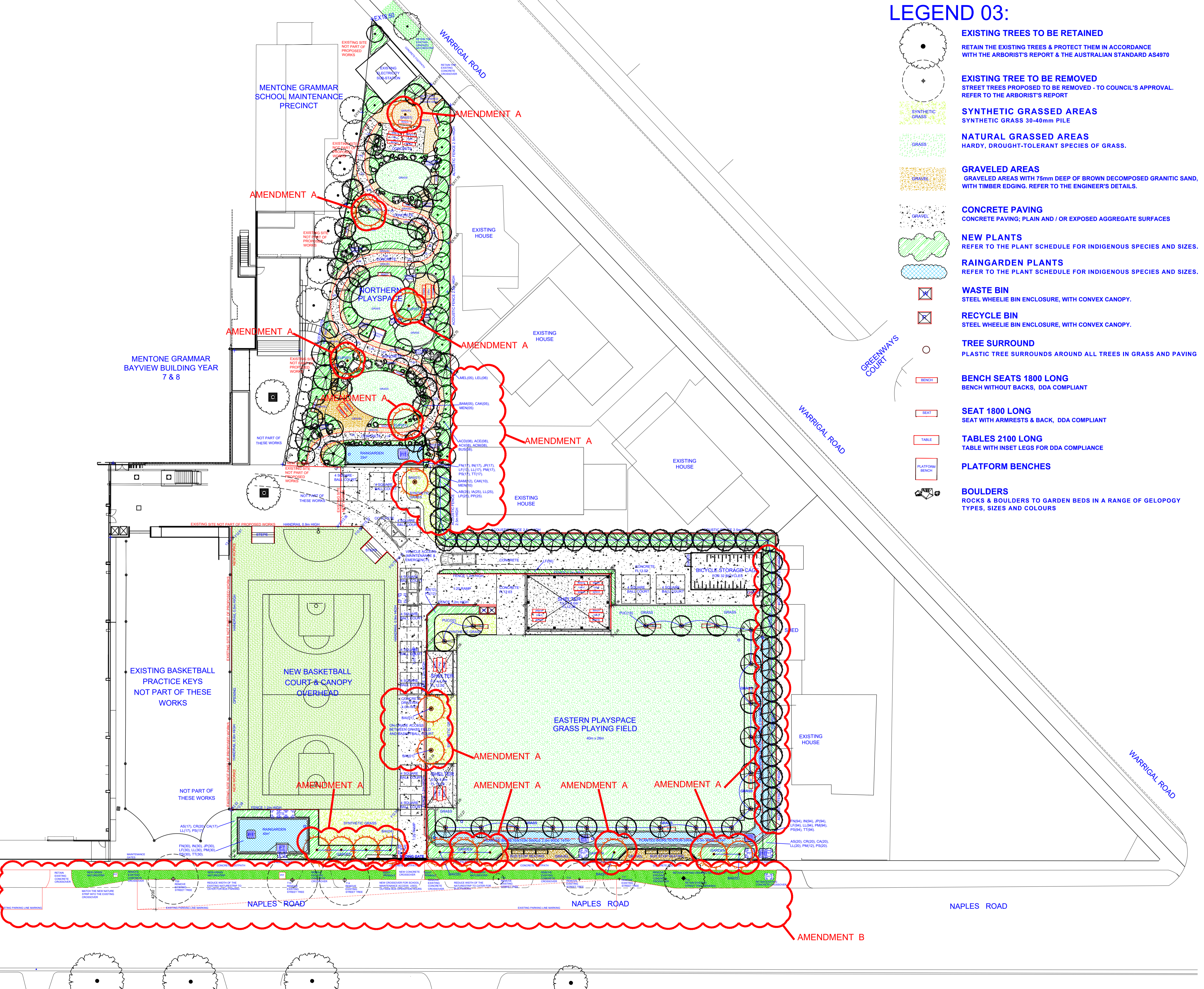
REVISION:  
 A CHANGED TREES 24 05 01  
 B BUS PARKING ON NAPLES RD 24 06 17

**PLANNING ISSUE**

NOTE: ALL PLANS MUST BE PRINTED AT A1 SIZE, IN FULL-COLOUR AT ALL TIMES

NOTES ABOUT THE DRAWING REVISIONS:  
 A. ADDITIONAL TALL TREES (BAI), WERE ADDED TO THE PLANS & THE SCHEDULE IN ACCORDANCE WITH KINGSTON CC REQUIREMENTS. TREE SPECIES AND QUANTITIES, AS DETAILED IN THE PLANT SCHEDULE, HAVE BEEN ANNOTATED & LOCATED ONTO THE PLANS.

B. THE PROPOSED BUS PARKING LAYOUT ON NAPLES ROAD HAS BEEN CHANGED TO RETAIN STREET TREE T10 (EAST).



**CRAIG ELDRIDGE DESIGN**  
 LANDSCAPE ARCHITECTURE  
 22 WALSH AVENUE, MOORABBIN, VICTORIA, 3189.  
 TEL:+61 (0)419 508 047  
 craig@cedesign.net.au

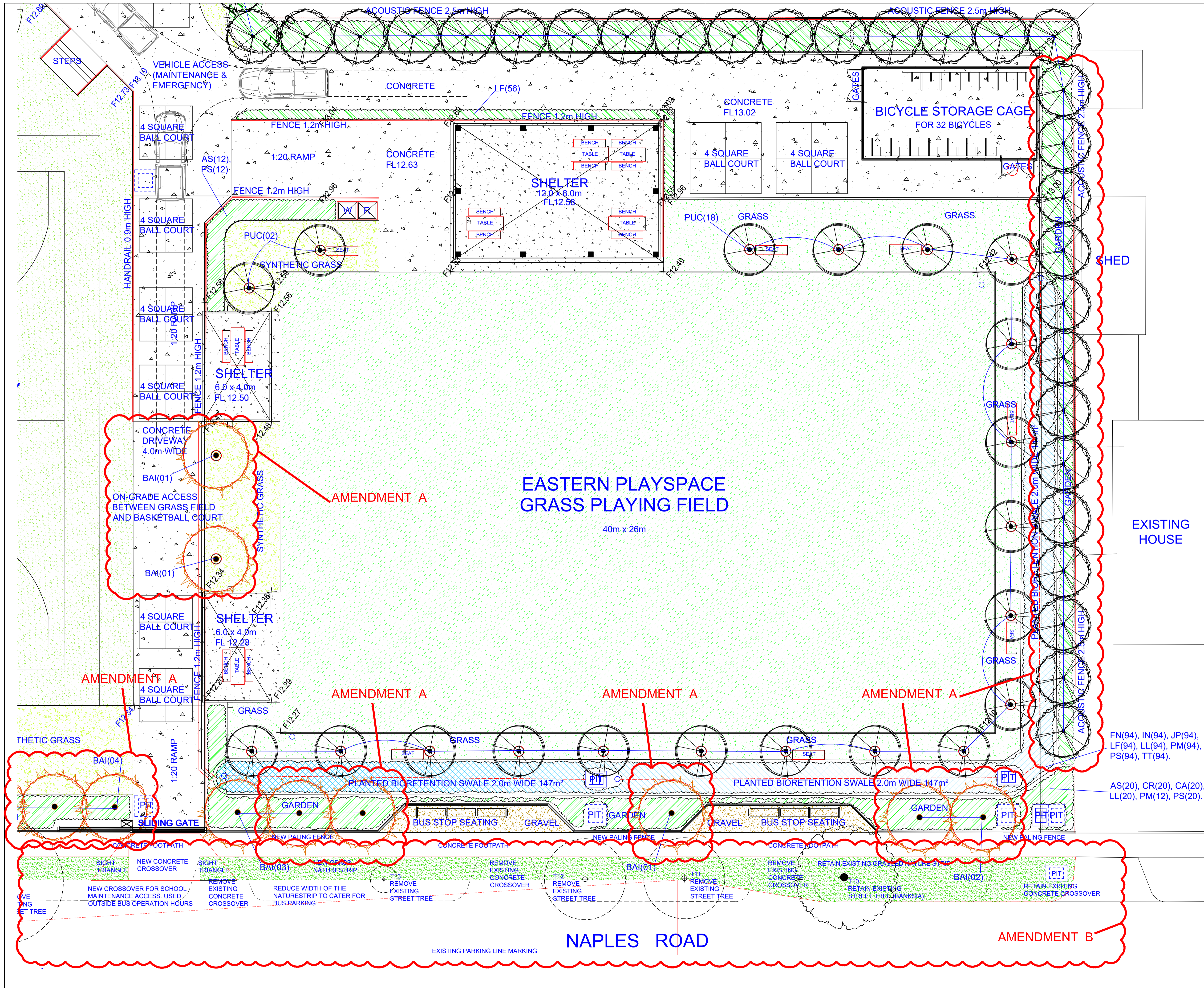
PROJECT  
**Mentone Grammar School,  
 New Playspace  
 Naples Road & Warrigal Road,  
 Mentone, Victoria.**

TITLE  
**Landscape Site Plan  
 Eastern & Northern Playspaces &  
 Basketball Court & Bus Parking**

SCALE DATE  
**1:250@A1 01.11.23**

DRAWN DWG  
**CE TPL01B**

DO NOT SCALE COPYRIGHT



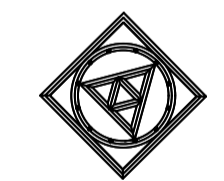
REVISION:  
 A CHANGED TREES 24 05 01  
 B BUS PARKING ON NAPLES RD 24 06 17

### PLANNING ISSUE

NOTE: ALL PLANS MUST BE PRINTED AT A1 SIZE, IN FULL-COLOUR AT ALL TIMES

NOTES ABOUT THE DRAWING REVISIONS:  
 A. ADDITIONAL TALL TREES (BAI), WERE ADDED TO THE PLANS & THE SCHEDULE IN ACCORDANCE WITH KINGSTON CC REQUIREMENTS. TREE SPECIES AND QUANTITIES, AS DETAILED IN THE PLANT SCHEDULE, HAVE BEEN ANNOTATED & LOCATED ONTO THE PLANS.

B. THE PROPOSED BUS PARKING LAYOUT ON NAPLES ROAD HAS BEEN CHANGED TO RETAIN STREET TREE T10 (EAST).



**CRAIG ELDRIDGE DESIGN**  
 LANDSCAPE ARCHITECTURE  
 22 WALSH AVENUE, MOORABBIN, VICTORIA, 3189.  
 TEL: +61 (0)419 508 047  
 craig@cedesign.net.au

PROJECT  
**Mentone Grammar School,  
 New Playspace  
 Naples Road & Warrigal Road,  
 Mentone, Victoria.**

TITLE  
**Landscape Plan  
 Eastern Playspace**

SCALE 1:100@A1 DATE 01.11.23

DRAWN CE DWG TPL02B

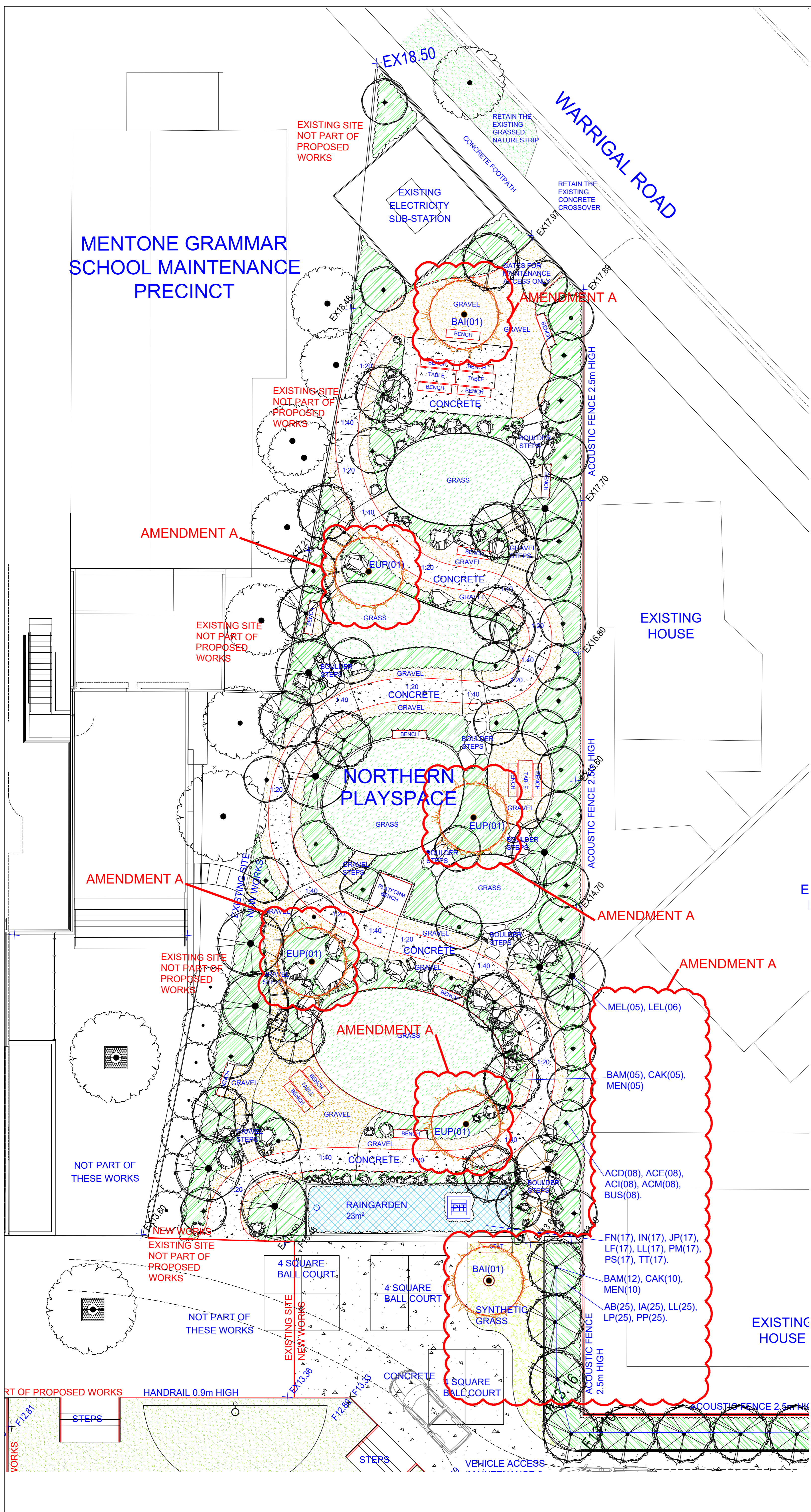
DO NOT SCALE COPYRIGHT

### PLANNING ISSUE

NOTE: ALL PLANS MUST BE PRINTED AT A1 SIZE, IN FULL-COLOUR AT ALL TIMES

NOTES ABOUT THE DRAWING REVISIONS:  
A. ADDITIONAL TALL TREES (BAI), WERE ADDED TO THE PLANS & THE SCHEDULE IN ACCORDANCE WITH KINGSTON CC REQUIREMENTS. TREE SPECIES AND QUANTITIES, AS DETAILED IN THE PLANT SCHEDULE, HAVE BEEN ANNOTATED & LOCATED ONTO THE PLANS.

B. THE PROPOSED BUS PARKING LAYOUT ON NAPLES ROAD HAS BEEN CHANGED TO RETAIN STREET TREE T10 (EAST).



  
**CRAIG ELDRIDGE DESIGN**  
 LANDSCAPE ARCHITECTURE  
 22 WALSH AVENUE, MOORABBIN, VICTORIA, 3189  
 TEL: +61 (0)419 508 047  
 craig@cedesign.net.au

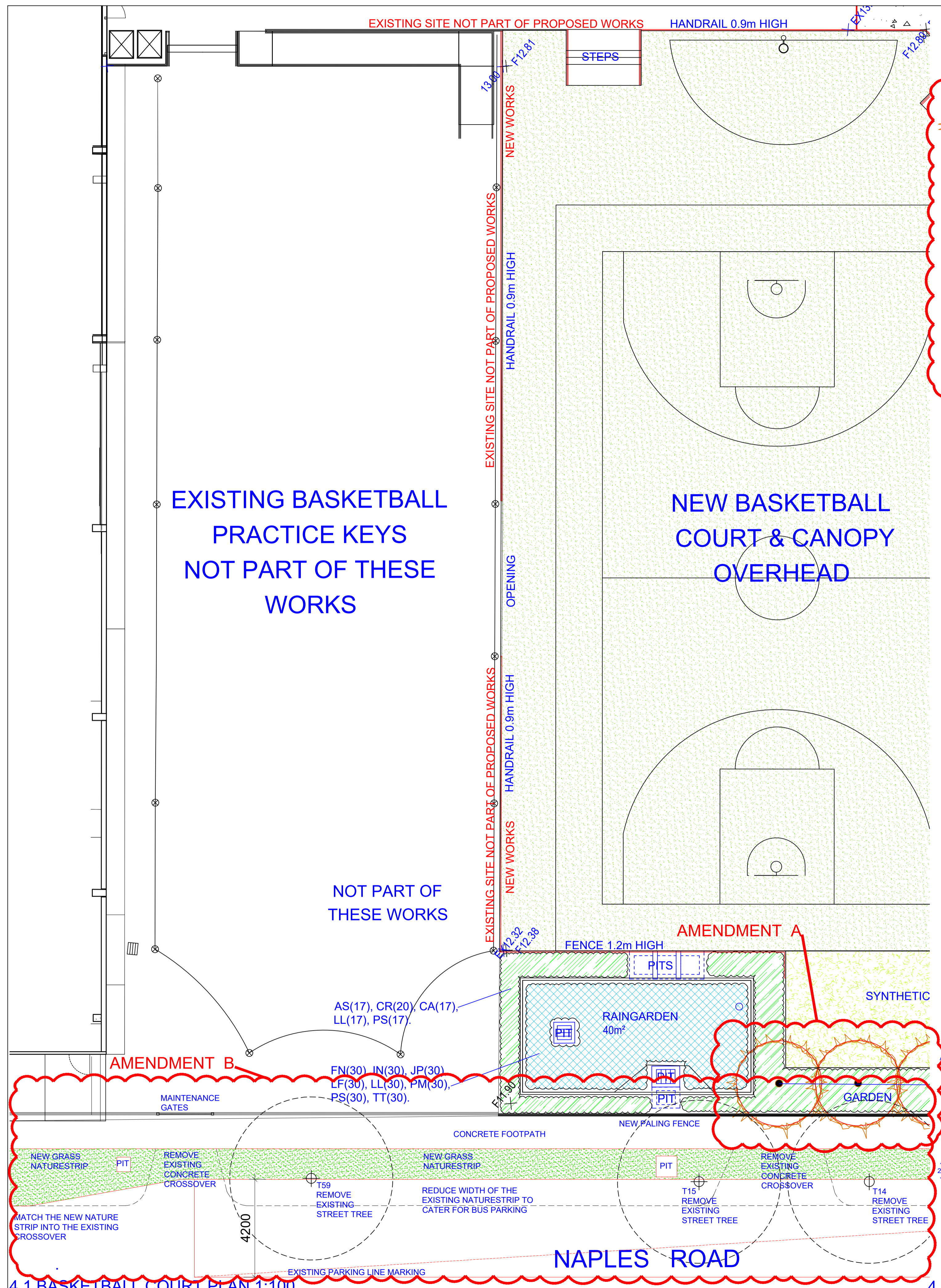
PROJECT  
**Mentone Grammar School,  
 New Playspace  
 Naples Road & Warrigal Road,  
 Mentone, Victoria.**

TITLE  
**Landscape Plan  
 Northern Playspace**

SCALE DATE  
**1:100@A1 01.11.23**

DRAWN DWG  
**CE TPL03A**

DO NOT SCALE COPYRIGHT



### PLANT SCHEDULE:

These shrubs, grasses and wildflowers are to be planted in a mixed, random, naturalistic style, to the on-site direction of the Landscape Architect. The plants are indigenous to the local area, EVC 02 Coastal Banksia Woodland zone, with some additional indigenous plants selected from a neighbouring EVC 161 Coastal Headland Scrub zone, which are suitable for planting in gardens and in a moist/dry raingarden type environment.

#### TALL TREES:

CODE	BOTANICAL NAME:	COMMON NAME:	SIZE H X W	PURCHASE SIZE:	QUANTITY
BAI	<i>Banksia integrifolia</i> (Eastern playspace)	Coastal Banksia	15.0x6.0m	1.5m Tall	14
EUP	<i>Eucalyptus pauciflora</i> (Northern playspace)	White Sally Gum Tree	15.0x6.0m	1.5m Tall	04

#### SCREEN TREES:

PYC	<i>Upright Ornamental Pear</i> (Grass playspace)	<i>Pyrus calleryana</i> "Capital"	11.0 x 3.0m	2.4m Tall	20
BAM	<i>Banksia marginata</i>	Silver Banksia	6.0 x 3.0m	1.2m Tall	17
CAK	<i>Callistemon "King's Park Special"</i>	Red Bottlebrush	4.0 x 3.0m	1.5m Tall	15
MEN	<i>Melaleuca nesophila</i>	Honey Myrtle	4.0 x 3.0m	1.5m Tall	15

#### MEDIUM TREES (Northern Playspace):

ACD	<i>Acacia dealbata</i>	Silver Wattle	6.0 x 3.0m	1.2m Tall	08
ACE	<i>Acacia mearnsii</i>	Black Wattle	6.0 x 4.0m	1.2m Tall	08
ACI	<i>Acacia implexa</i>	Lightwood	8.0 x 4.0m	1.2m Tall	08
ACM	<i>Acacia melanoxylon</i>	Blackwood	8.0 x 5.0m	1.2m Tall	08
BUS	<i>Bursaria spinosa</i>	Sweet Bursaria	6.0 x 3.0m	1.2m Tall	08

#### MELALEUCA TREES:

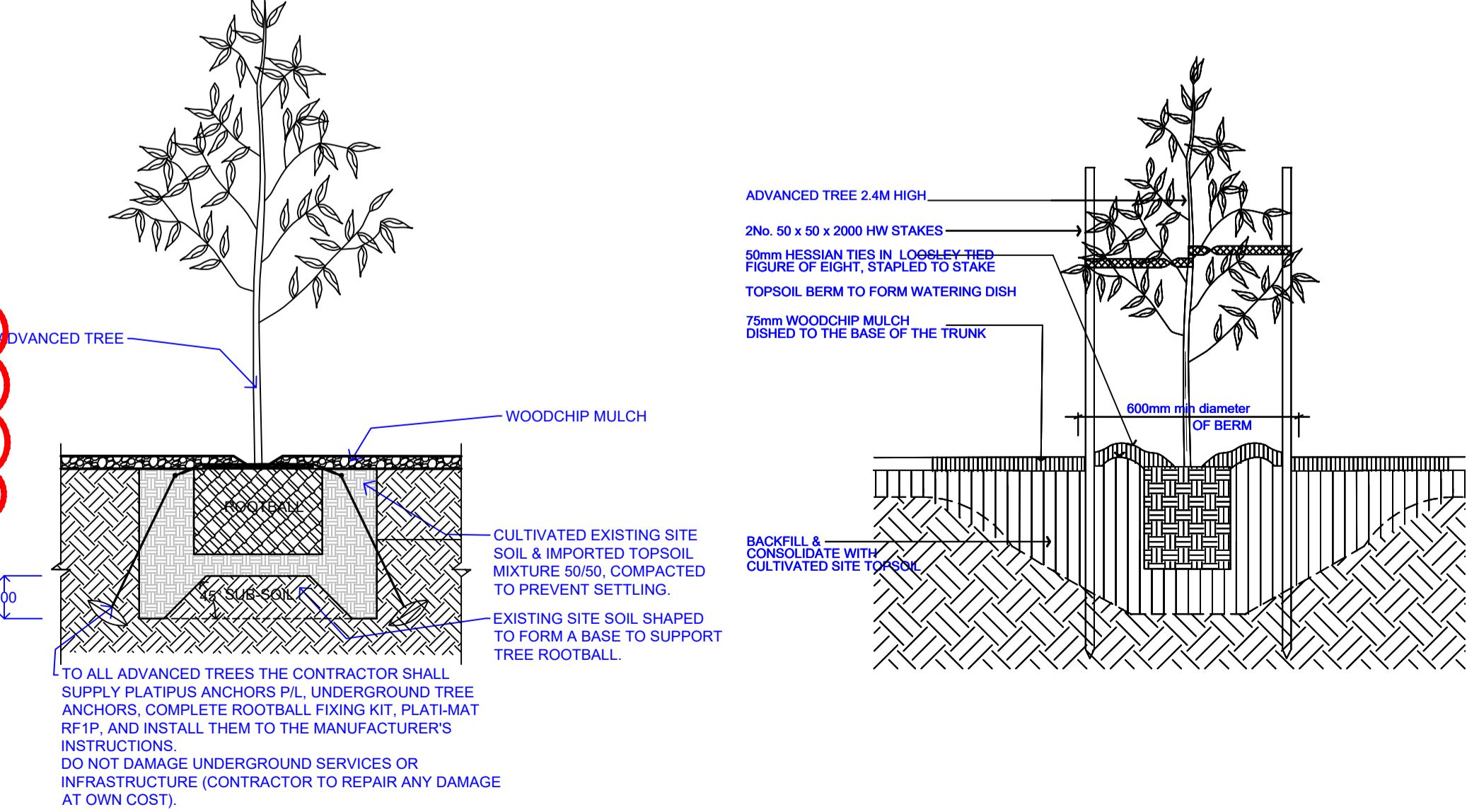
MEL	<i>Melaleuca lanceolata</i>	Moonah	6.0 x 5.0m	1.2m Tall	05
LEL	<i>Leptospermum laevigatum</i>	Coastal Tea-tree	6.0 x 4.0m	1.2m Tall	06

#### SHRUBS & GRASSES:

AB	<i>Alyxia buxifolia</i>	Sea Box	1.5 x 1.5m	140mm Pot	30
AP	<i>Apium prostratum</i>	Sea Celery	0.1 X 0.3m	140mm Pot	30
AS	<i>Austrostipa stipoides*</i>	Coast Spear Grass*	1.0 x 1.0m	140mm Pot	195
BB	<i>Bulbine bulbosa</i>	Yellow Bulbine Lily	0.2 X 0.3m	140mm Pot	80
BP	<i>Brachyscome parvula</i>	Coastal Daisy	0.2 x 0.3m	140mm Pot	30
CA	<i>Chrysocephalum apiculatum</i>	Common Everlasting	0.5 x 1.0m	140mm Pot	150
CB	<i>Correa alba</i>	White Correa	1.0 x 1.0m	140mm Pot	40
CR	<i>Correa reflexa</i>	Common Correa	1.0 x 1.0m	140mm Pot	40
CS	<i>Carpobrotus rossii</i>	Karkalla	0.2 x 1.0m	140mm Pot	25
DB	<i>Dianella brevicaulis</i>	Small-flowered Flax-Lily	0.5 x 0.5m	140mm Pot	40
FN	<i>Ficinia nodosa*</i>	Knobby Club Rush*	0.5 x 0.5m	140mm Pot	215
IA	<i>Indigofera australis</i>	Austral Indigo	1.5 x 1.5m	140mm Pot	30
IN	<i>Isoplepis inundata*</i>	Swamp Club-Sedge*	0.5 x 0.5m	140mm Pot	175
JP	<i>Juncus pallidus*</i>	Pale Rush*	0.7 x 0.7m	140mm Pot	245
LB	<i>Leucophyta brownii</i>	Cushion Bush	1.0 x 1.0m	140mm Pot	50
LF	<i>Lomandra filiformis*</i>	Wattle Mat-rush*	0.5 x 0.5m	140mm Pot	215
LG	<i>Lepidosperma gladiatum</i>	Coast Sword Sedge	0.7 x 0.7m	140mm Pot	40
LL	<i>Lomandra longifolia*</i>	Spiny-headed Mat-rush*	1.0 x 1.0m	140mm Pot	295
LP	<i>Leucopogon parviflorus</i>	Coast Beard Heath	2.5 x 2.5m	140mm Pot	30
MP	<i>Myoporum parvifolium</i>	Creeping Boobialla (Fine-leaf)	0.2 x 1.0m	140mm Pot	20
PA	<i>Pelargonium australe</i>	Austral Stork's Bill	0.3 x 0.3m	140mm Pot	30
PM	<i>Poa morrisii*</i>	Velvet Tussock Grass*	0.5 x 0.5m	140mm Pot	290
PO	<i>Paterosonia occidentalis</i>	Purple Flag Iris	0.3 x 0.3m	140mm Pot	30
PP	<i>Pomadereis paniculosa</i>	Coast Pomadereis	2.5 x 2.5m	140mm Pot	20
PS	<i>Poa poiformis var. poiformis*</i>	Coastal Tussock-grass*	1.0 x 1.0m	140mm Pot	280
RC	<i>Rhagodia candolleana</i>	Seaberry Saltbush	1.5 x 1.5m	140mm Pot	20
TE	<i>Tetragonia tetragonioides</i>	Warrigal Greens	0.2 x 1.0m	140mm Pot	30
TT	<i>Themeda triandra*</i>	Kangaroo Grass*	0.7 x 0.7m	140mm Pot	280
VH	<i>Viola hederacea</i>	Native Violets	0.1 X 0.3m	140mm Pot	100

#### NOTES:

- \* An asterisk denotes indigenous plants which will be used in the Raingardens and Bioswales, as well as throughout the gardens.
- 1. Plants in the Schedule are indigenous to the site. All new plants shall be sourced from local Indigenous Plant nurseries and they shall be grown from locally collected seed and/or propagation materials, from the Sandbelt & Eastern Coastal Region of Port Phillip. All trees shall be purchased in the largest pot sizes and tallest heights available for the species. All trees in garden beds shall have 2 x No. wooden tree stakes at heights at, or taller than, the respective tree heights. All trees in grassed areas and concrete paving shall have underground guys.
- 2. If shrubs, grasses and groundcovers cannot be purchased in 140mm minimum diameter pots, then tubestock may be substituted, to the approval of the Landscape architect.
- 3. The *Viola hederacea* shall be planted under the benches and seats which are located in garden beds.



REVISION:		
A	CHANGED TREES	24 05 01
B	BUS PARKING ON NAPLES RD	24 06 17

### PLANNING ISSUE

NOTE: ALL PLANS MUST BE PRINTED AT A1 SIZE, IN FULL-COLOUR AT ALL TIMES

NOTES ABOUT THE DRAWING REVISIONS:  
A. ADDITIONAL TALL TREES (BAI), WERE ADDED TO THE PLANS & THE SCHEDULE IN ACCORDANCE WITH KINGSTON CC REQUIREMENTS. TREE SPECIES AND QUANTITIES, AS DETAILED IN THE PLANT SCHEDULE, HAVE BEEN ANNOTATED & LOCATED ONTO THE PLANS.

B. THE PROPOSED BUS PARKING LAYOUT ON NAPLES ROAD HAS BEEN CHANGED TO RETAIN STREET TREE T10 (EAST).

### AMENDMENT A



**CRAIG ELDRIDGE DESIGN**  
LANDSCAPE ARCHITECTURE  
22 WALSH AVENUE, MOORABBIN, VICTORIA, 3189.  
TEL:+61 (0)419 508 047  
craig@cedesign.net.au

PROJECT  
**Mentone Grammar School,  
New Playspace  
Naples Road & Warrigal Road,  
Mentone, Victoria.**

TITLE  
**Planting Schedule, Details &  
Basketball Court Plan**

SCALE DATE  
**1:100@A1 01.11.23**

DRAWN DWG  
**CE TPL04B**

DO NOT SCALE COPYRIGHT

4.1 BASKETBALL COURT PLAN 1:100

4.2 UNDERGROUND TREE ANCHORS 1:25

4.3 TREE STAKING 1:25