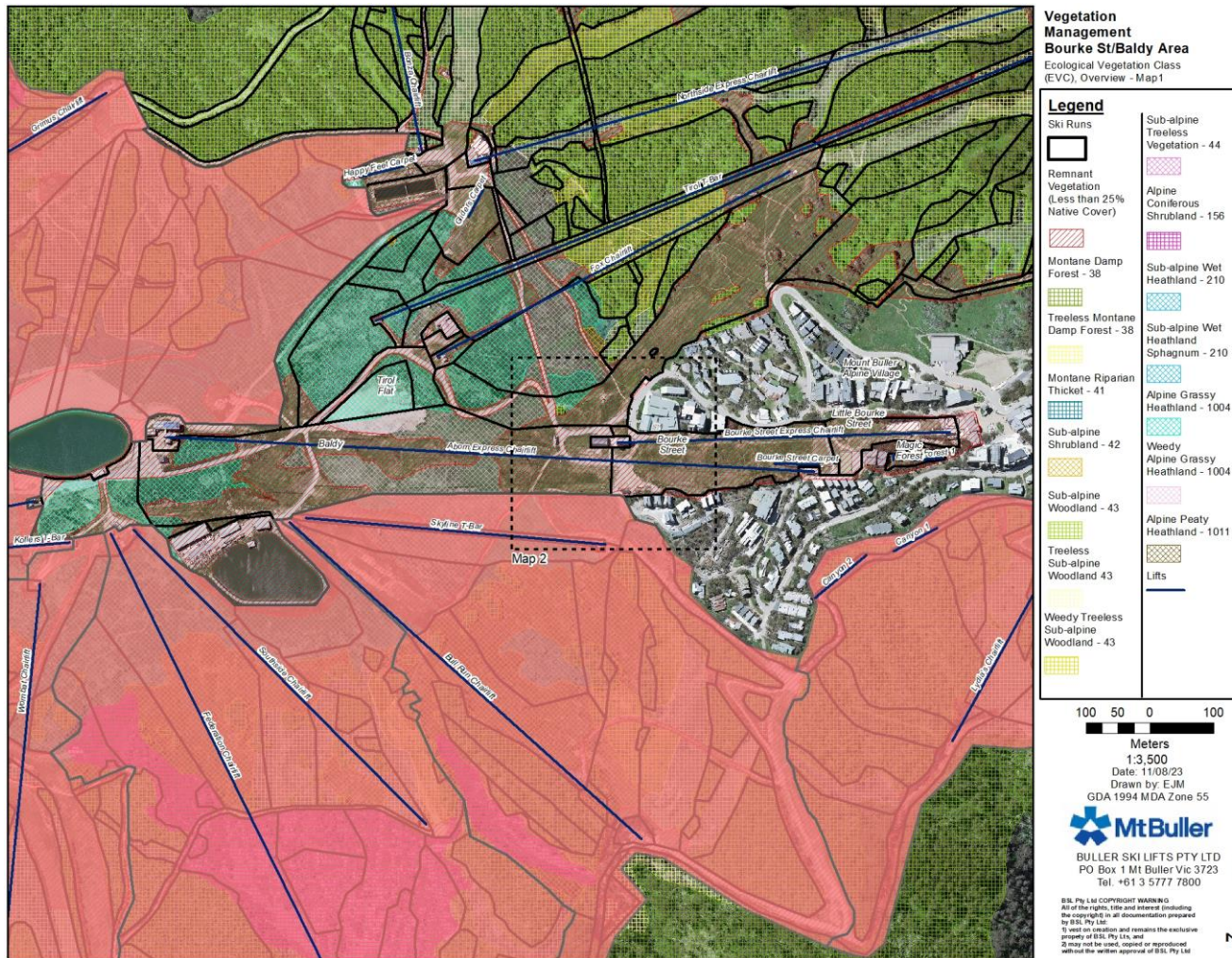
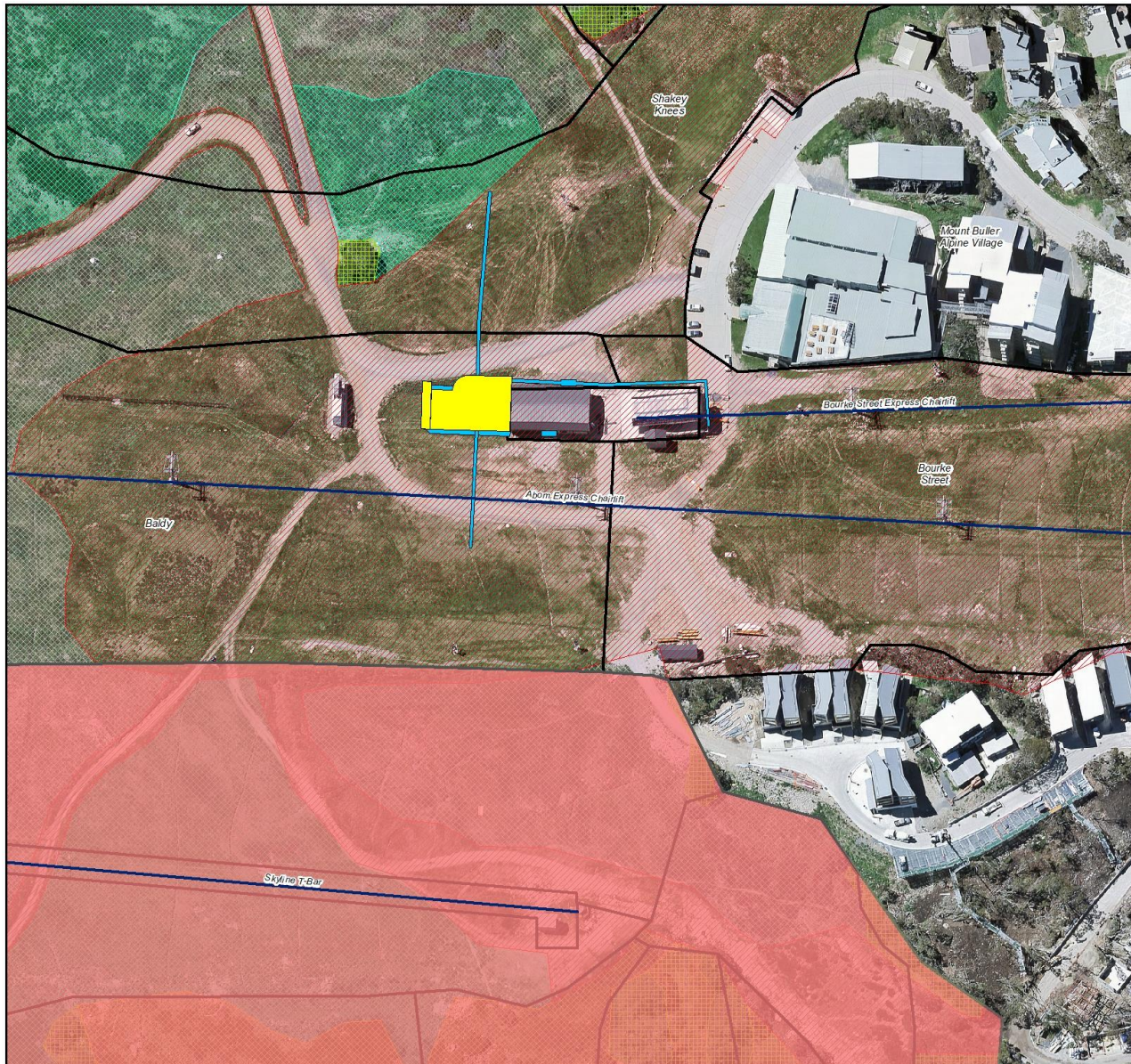


# Mid-Station Extension, Snowmaking Compressor Building, Mt Buller Ski Field

## Vegetation Management Plan (PA2011011306) Reference Information





**Vegetation Management  
Bourke St/Baldy Area**  
Ecological Vegetation Class  
(EVC), Overview - Map 2

**Legend**

 Ski Runs	 Sub-alpine Treeless Vegetation - 44
 Remnant Vegetation (Less than 25% Native Cover)	 Alpine Coniferous Shrubland - 156
 Montane Damp Forest - 38	 Sub-alpine Wet Heathland - 210
 Treeless Montane Damp Forest - 38	 Sub-alpine Wet Heathland Sphagnum - 210
 Montane Riparian Thicket - 41	 Alpine Grassy Heathland - 1004
 Sub-alpine Shrubland - 42	 Weedy Alpine Grassy Heathland - 1004
 Sub-alpine Woodland - 43	 Alpine Peaty Heathland - 1011
 Treeless Sub-alpine Woodland 43	 Lifts
 Weedy Treeless Sub-alpine Woodland - 43	 Proposed Building Extension Envelope
 Additional Ground Disturbance	 Additional Ground Disturbance

20 10 0 20



Meters

1:800

Date: 11/08/23

Drawn by: EJM

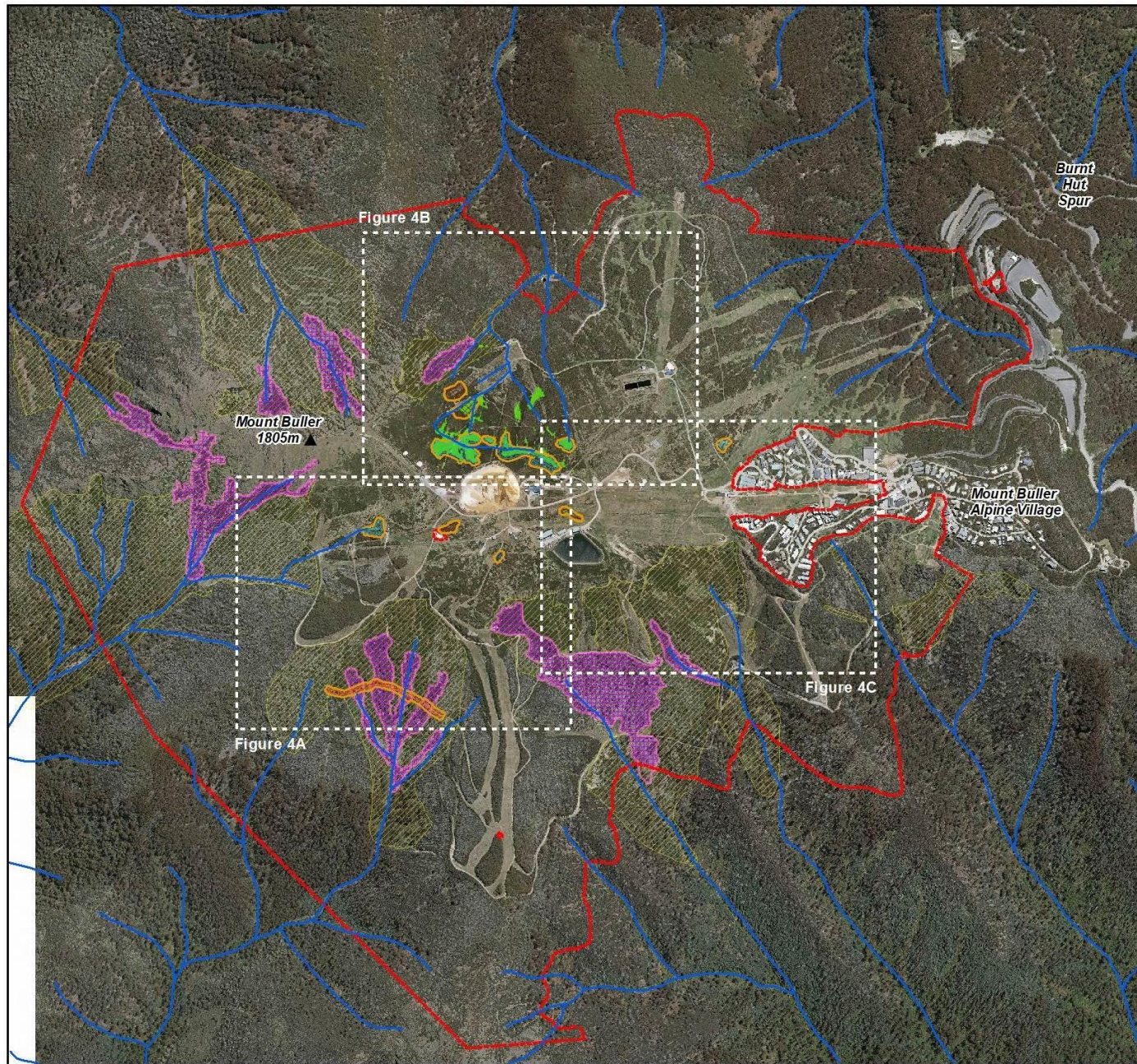
GDA 1994 MDA Zone 55



BULLER SKI LIFTS PTY LTD  
PO Box 1 Mt Buller Vic 3723  
Tel. +61 3 5777 7800

B.S.L. Pty Ltd COPYRIGHT WARNING  
All of the rights, title and interest (including the copyright) in all documentation prepared by B.S.L. Pty Ltd:  
1) vest on creation and remains the exclusive property of B.S.L. Pty Ltd, and  
2) may not be used, copied or reproduced without the written approval of B.S.L. Pty Ltd




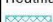


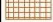

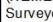


N



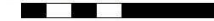
**Figure 4**  
Ski Field  
Vegetation  
Management

Sensitive Areas  
Overview

**Legend**

- Mountain Pygmy Possum  
Habitat - Type 1  

- Mountain Pygmy Possum  
Habitat - Type 2  

- Caltha introloba  

- Sub-alpine Wet  
Heathland  

- Alpine Coniferous Shrubland  

- Alpine Peaty Heathland  

- Orange Hawkweed  
Quarantine Area  

- Sensitive Areas  
8m - Buffer  

- Hydrological and Ecological Monitoring  
and Adaptive Management Program  
(HEMEMP)  
Surveyed Alpine Bogs  

- Drainage Line  

- Ski Field  
Boundary  


300 150 0 300



Meters  
1:9,000

Date: 03/05/21

Created by: EJM

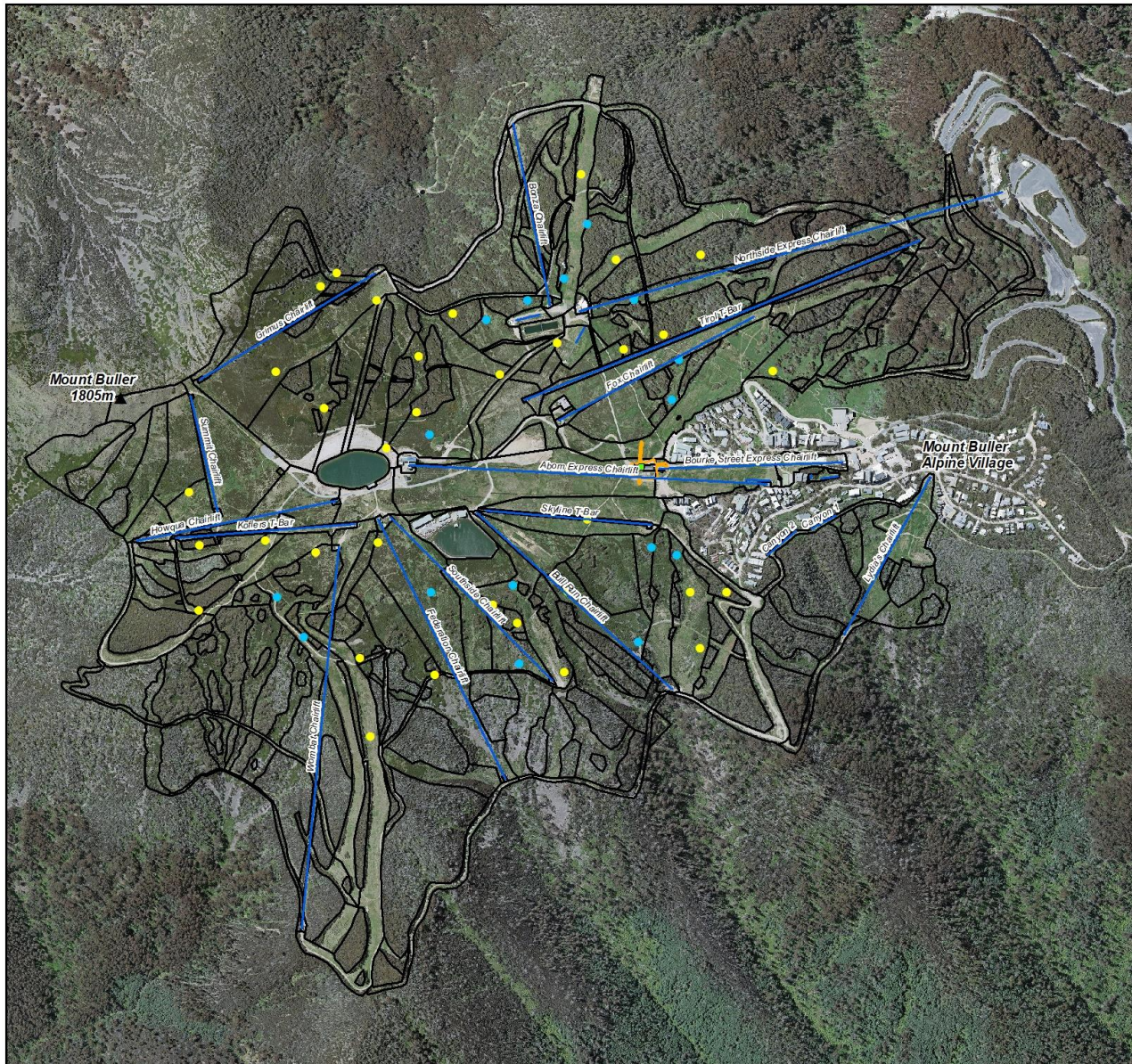
GDA 1994 MDA Zone 55



BULLER SKI LIFTS PTY LTD  
PO Box 1 Mt Buller Vic 3723  
Tel. +61 3 5777 7800

B.S.L. Pty Ltd COPYRIGHT WARNING  
All of the rights, title and interest (including  
the copyright) in all documentation prepared  
by B.S.L. Pty Ltd:  
1) vest on creation and remains the exclusive  
property of B.S.L. Pty Ltd, and  
2) may not be used, copied or reproduced  
without the written approval of B.S.L. Pty Ltd





**Vegetation Management  
Mount Buller Ski Field**

Broad-toothed Rat  
(*Mastomys fuscus*)  
Distribution

**Legend**

- Ski Runs
- Signs of *Mastomys fuscus*
- Fecal Pellet Sites
- Lifts

Site Boundary

Proposed Building Envelope

250 125 0 250



Meters

1:7,000

Date: 11/08/23

Drawn by: EJM

GDA 1994 MDA Zone 55



BULLER SKI LIFTS PTY LTD  
PO Box 1 Mt Buller Vic 3723  
Tel. +61 3 5777 7800

B.S.L. Pty Ltd COPYRIGHT WARNING  
All of the rights, title and interest (including the copyright) in all documentation prepared by B.S.L. Pty Ltd:  
1) vest on creation and remains the exclusive property of B.S.L. Pty Ltd, and  
2) may not be used, copied or reproduced without the written approval of B.S.L. Pty Ltd

N



**Vegetation Management  
Mount Buller Ski Field**

Broad-toothed Rat  
(*Mastomys fuscus*)  
Distribution

**Legend**

Ski Runs



Signs of *Mastomys fuscus*



Fecal Pellet Sites



Lifts



Site Boundary



Proposed Building Envelope



70 35 0 70



Meters

1:2,000

Date: 11/08/23

Drawn by: EJM

GDA 1994 MDA Zone 55



BULLER SKI LIFTS PTY LTD  
PO Box 1 Mt Buller Vic 3723  
Tel. +61 3 5777 7800

B.S.L. Pty Ltd COPYRIGHT WARNING  
All of the rights, title and interest (including the copyright) in all documentation prepared by B.S.L. Pty Ltd:  
1) vest on creation and remains the exclusive property of B.S.L. Pty Ltd, and  
2) may not be used, copied or reproduced without the written approval of B.S.L. Pty Ltd

N