

REFER TO DRAWING 60597809-DWG-LD-1002

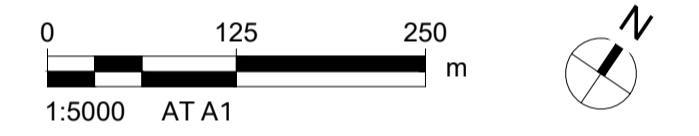
LEGEND

	SITE BOUNDARY		10M WIDE PLANTING ZONE - TARGETED (REFER TO DETAIL 03)
	PROPOSED ACCESS ROAD		5M WIDE PLANTING ZONE - TYPICAL (REFER TO DETAIL 04)
	SOLAR ARRAY		INFILL PLANTING TO EXISTING BOUNDARY VEGETATION
	EASEMENT		ENVIRONMENTAL VALUE (EVC HABITAT ZONES) TO BE RETAINED
	SUBSTATION AND O&M FACILITY		10M FIRE BREAK
	SENSITIVE RECEPTOR		SCATTERED TREES TO BE RETAINED (INCLUDING 15m TPZ)

GENERAL NOTES

- REFER TO 60597809-DWG-LD-1003 FOR PLANT SCHEDULE. PLANT SPECIES TO BE SOURCES FROM LOCAL SUPPLIERS AND LOCALLY COLLECTED SEED WHERE POSSIBLE.
- REFER TO DETAIL 01 OF 60597809-DWG-1004 FOR TYPICAL PLANTING DETAIL.
- INFILL PLANTING TO EXISTING VEGETATION TO FOLLOW TARGETED PLANTING DETAIL 03 OF 60597809-DWG-1004
- TEMPORARY STOCK PROOF FENCE TO BE PROVIDED AROUND SCREEN PLANTING IF GRAZING IS TO OCCUR DURING PLANTING ESTABLISHMENT.
- DURING PLANTING ESTABLISHMENT PROVIDE CONTINUAL WEED CONTROL AND APPLY APPROVED NON-RESIDUAL HERBICIDE IF APPROPRIATE.

ADVERTISED PLAN



Verify all dimensions on site prior to construction.
 Do not scale from drawing.
 All dimensions in metres unless otherwise stated.

REGISTRATION

NOT FOR CONSTRUCTION

PROJECT MANAGEMENT INITIALS

R RUSSELL	S JACOB	S JACOB
DESIGNER	CHECKED	APPROVED

ISSUE/REVISION

I/R	DATE	DESCRIPTION
06	16/06/2021	FOR TOWN PLANNING
05	30/04/2021	FOR TOWN PLANNING
04	02/10/2020	FOR TOWN PLANNING
03	04/10/2020	FOR TOWN PLANNING
02	17/02/2020	FOR TOWN PLANNING
01	13/06/2019	PRELIMINARY - FOR DISCUSSION

This copied document to be made available for the sole purpose of enabling its consideration and review as part of a planning process under the Planning and Environment Act 1987. The document must not be used for any purpose which may breach any copyright.

PROJECT NUMBER

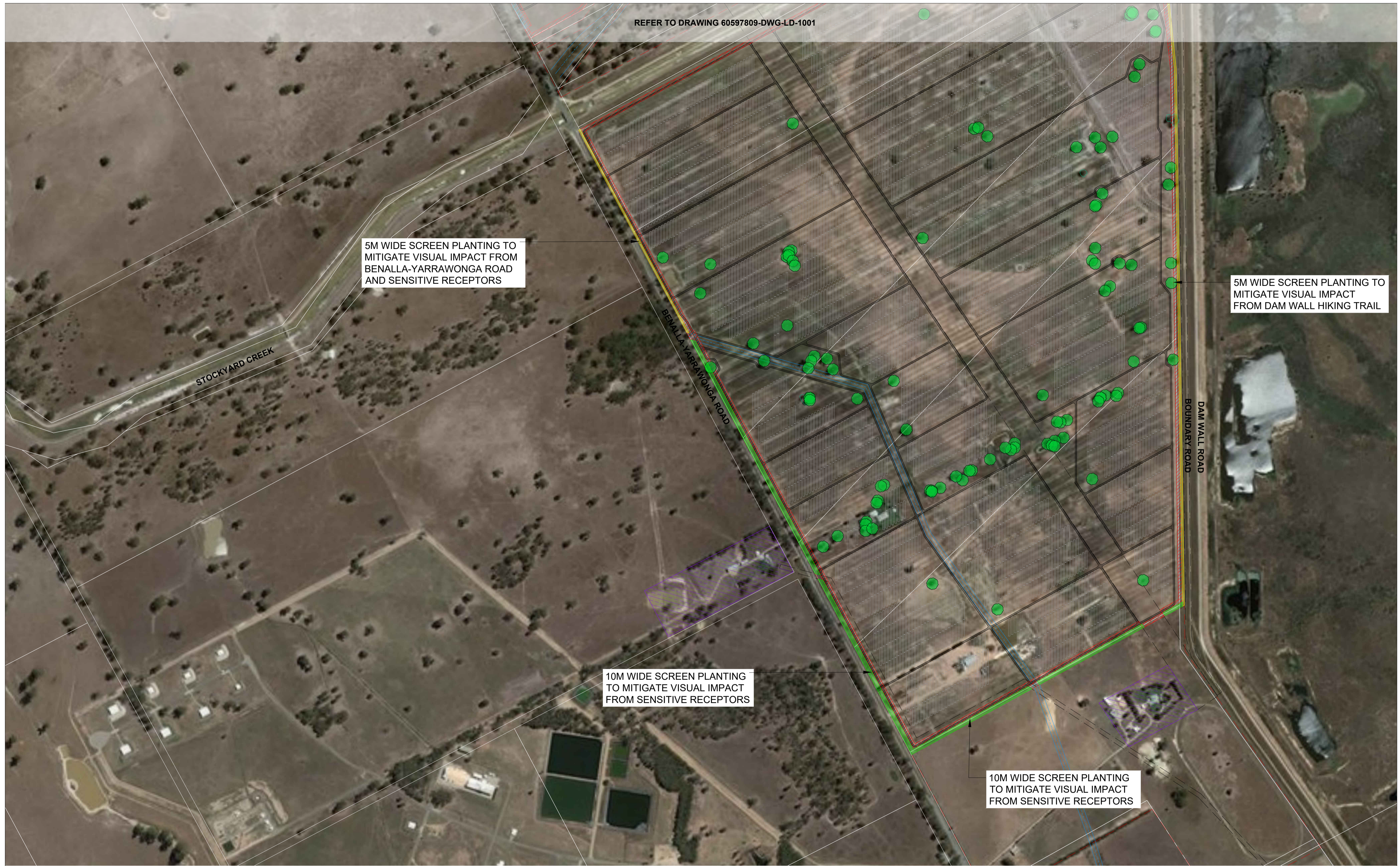
60597809

SHEET TITLE

WEST MOKOAN
 SOLAR FARM
 LANDSCAPE PLAN

SHEET NUMBER

60597809-DWG-LD-1001



REFER TO DRAWING 60597809-DWG-LD-1001

5M WIDE SCREEN PLANTING TO MITIGATE VISUAL IMPACT FROM BENALLA-YARRAWONGA ROAD AND SENSITIVE RECEPTORS

5M WIDE SCREEN PLANTING TO MITIGATE VISUAL IMPACT FROM DAM WALL HIKING TRAIL

10M WIDE SCREEN PLANTING TO MITIGATE VISUAL IMPACT FROM SENSITIVE RECEPTORS

10M WIDE SCREEN PLANTING TO MITIGATE VISUAL IMPACT FROM SENSITIVE RECEPTORS

LEGEND

- SITE BOUNDARY
- PROPOSED ACCESS ROAD
- SOLAR ARRAY
- EASEMENT
- SUBSTATION AND O&M FACILITY
- SENSITIVE RECEPTOR
- 10M WIDE PLANTING ZONE - TARGETED (REFER TO DETAIL 03)
- 5M WIDE PLANTING ZONE - TYPICAL (REFER TO DETAIL 04)
- INFILL PLANTING TO EXISTING BOUNDARY VEGETATION
- ENVIRONMENTAL VALUE (EVC HABITAT ZONES) TO BE RETAINED
- 10M FIRE BREAK
- SCATTERED TREES TO BE RETAINED (INCLUDING 15m TPZ)

GENERAL NOTES

1. REFER TO 60597809-DWG-LD-1003 FOR PLANT SCHEDULE. PLANT SPECIES TO BE SOURCES FROM LOCAL SUPPLIERS AND LOCALLY COLLECTED SEED WHERE POSSIBLE.
2. REFER TO DETAIL 01 OF 60597809-DWG-1004 FOR TYPICAL PLANTING DETAIL.
3. INFILL PLANTING TO EXISTING VEGETATION TO FOLLOW TARGETED PLANTING DETAIL 03 OF 60597809-DWG-1004
4. TEMPORARY STOCK PROOF FENCE TO BE PROVIDED AROUND SCREEN PLANTING IF GRAZING IS TO OCCUR DURING PLANTING ESTABLISHMENT.
5. DURING PLANTING ESTABLISHMENT PROVIDE CONTINUAL WEED CONTROL AND APPLY APPROVED NON-RESIDUAL HERBICIDE IF APPROPRIATE.

ADVERTISED PLAN



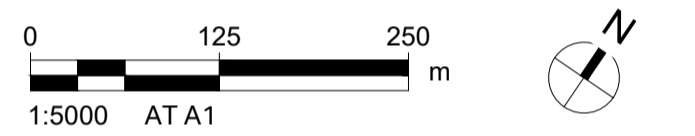
PROJECT
 WEST MOKOAN
 SOLAR FARM
 LANDSCAPE DESIGN

BENALLA
 Victoria

CLIENT
 892 Yarrawonga
 Development Pty Ltd
 Level 19, 303 Collins Street
 Melbourne, VIC 3000



CONSULTANT
 AECOM
 COLLINS SQUARE, LEVEL 10, TOWER TWO
 727 COLLINS STREET, MELBOURNE, VIC 3008
 613 9653 1234 tel 613 9654 7117 fax
 www.aecom.com



Verify all dimensions on site prior to construction.
 Do not scale from drawing.
 All dimensions in metres unless otherwise stated.

REGISTRATION

NOT FOR CONSTRUCTION

PROJECT MANAGEMENT INITIALS

R RUSSELL	S JACOB	S JACOB
DESIGNER	CHECKED	APPROVED

ISSUE/REVISION

I/R	DATE	DESCRIPTION
05	20/05/2021	FOR TOWN PLANNING
04	30/04/2021	FOR TOWN PLANNING
03	04/09/2020	FOR TOWN PLANNING
02	17/02/2020	FOR TOWN PLANNING
01	13/06/2019	PRELIMINARY - FOR DISCUSSION

This copied document to be made available for the sole purpose of enabling its consideration and review as part of a planning process under the Planning and Environment Act 1987. The document must not be used for any purpose which may breach any consent.

PROJECT NUMBER

60597809

SHEET TITLE

WEST MOKOAN
 SOLAR FARM
 LANDSCAPE PLAN

SHEET NUMBER

60597809-DWG-LD-1002

PLANT SCHEDULE

Botanical Name	Common Name	Ecological Vegetation Class (EVC)	Height (m)	Spread (m)	Installation Size	Installation Rate	Proportion	Approx Quantity
<i>Eucalyptus melliodora</i>	Yellow Box	EVC 55_61	15	10	150mm pot	See below	30%	709
<i>Eucalyptus microcarpa</i>	Grey Box	EVC 235	25	15	150mm pot	See below	20%	473
<i>Allocasuarina luehmannii</i>	Buloke	EVC 235	8	4	150mm pot	See below	20%	473
<i>Eucalyptus albens</i>	White Box		25	15	150mm pot	See below	15%	355
<i>Eucalyptus camaldulensis</i>	River Red Gum	EVC 55_61	20	15	150mm pot	See below	15%	355
4 no. trees per 100m2 (10 x 10m area)								
<i>Acacia acinacea s.l.</i>	Gold-dust Wattle	EVC 55_61	3	2	Tubestock	See below	20%	1875
<i>Acacia paradoxa</i>	Hedge Wattle	EVC 55_61 & EVC 235	4	2	Tubestock	See below	20%	1875
<i>Acacia pycnantha</i>	Golden Wattle	EVC 55_61 & EVC 235 & EVC 61	5	2	Tubestock	See below	15%	1406
<i>Bursaria spinosa</i>	Sweet Bursaria	EVC 55_61	4	3	Tubestock	See below	15%	1406
<i>Melaleuca parvistaminea</i>	Rough-barked Honey-myrtle		4	5	Tubestock	See below	15%	1406
<i>Callistemon sieberi</i>	River Bottlebrush		5	4	Tubestock	See below	15%	1406
20 no. shrubs per 100m2 (10 x 10m area)								

EVC Number	EVC Class	Bioregion
EVC 55_61	EVC 55_61 Plains Grassy Woodland	Victorian Riverina Bioregion
EVC 235	EVC 235 Plains Woodland / Herbrich Gilgai Wetland Mosaic	Victorian Riverina Bioregion
EVC 61	EVC 61_Box Ironbark Forest	Central Victorian Uplands Bioregion

- Note:**
- Plant selection is based on the above Ecological Vegetation Classes and recommendations from the Regent Honeyeater Group. All three are indigenous and currently found on or surrounding the site, according to NatureKit Interactive Mapping, on the Department of Environment, Land, Water and Planning Website.
 - The plant schedule is subject to further review and confirmation on the appropriate species for the local conditions.

This copied document to be made available for the sole purpose of enabling its consideration and review as part of a planning process under the Planning and Environment Act 1987. The document must not be used for any purpose which may breach any copyright.

PLANT IMAGES



Eucalyptus melliodora



Eucalyptus microcarpa



Allocasuarina luehmannii



Eucalyptus camaldulensis



Acacia acinacea



Acacia paradoxa



Bursaria spinosa



Melaleuca parvistaminea



Callistemon sieberi

ADVERTISED PLAN

PROJECT

**WEST MOKOAN
SOLAR FARM
PLANT SCHEDULE**

BENALLA
Victoria

CLIENT

**892 Yarrawonga
Development Pty Ltd**

Level 19, 303 Collins Street
Melbourne, VIC 3000



CONSULTANT

AECOM
COLLINS SQUARE, LEVEL 10, TOWER TWO
727 COLLINS STREET, MELBOURNE, VIC 3008
613 9653 1234 tel 613 9654 7117 fax
www.aecom.com

REGISTRATION

NOT FOR CONSTRUCTION

PROJECT MANAGEMENT INITIALS

R RUSSELL	S JACOB	S JACOB
DESIGNER	CHECKED	APPROVED

ISSUE/REVISION

I/R	DATE	DESCRIPTION
05	30/04/2021	FOR TOWN PLANNING
04	04/09/2020	FOR TOWN PLANNING
03	17/02/2020	FOR TOWN PLANNING
02	08/07/2019	FOR DISCUSSION
01	13/06/2019	PRELIMINARY - FOR DISCUSSION

PROJECT NUMBER

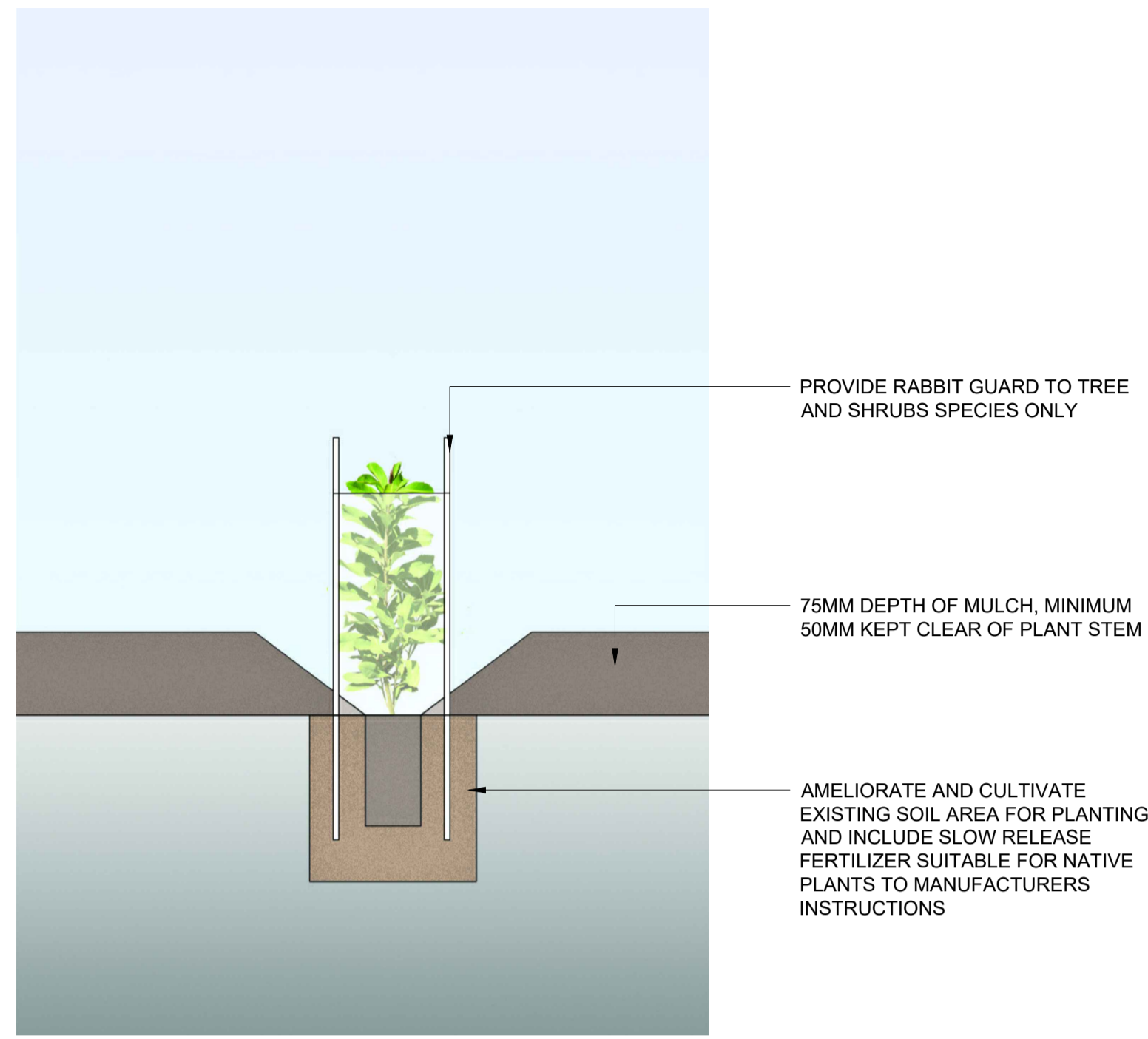
60597809

SHEET TITLE

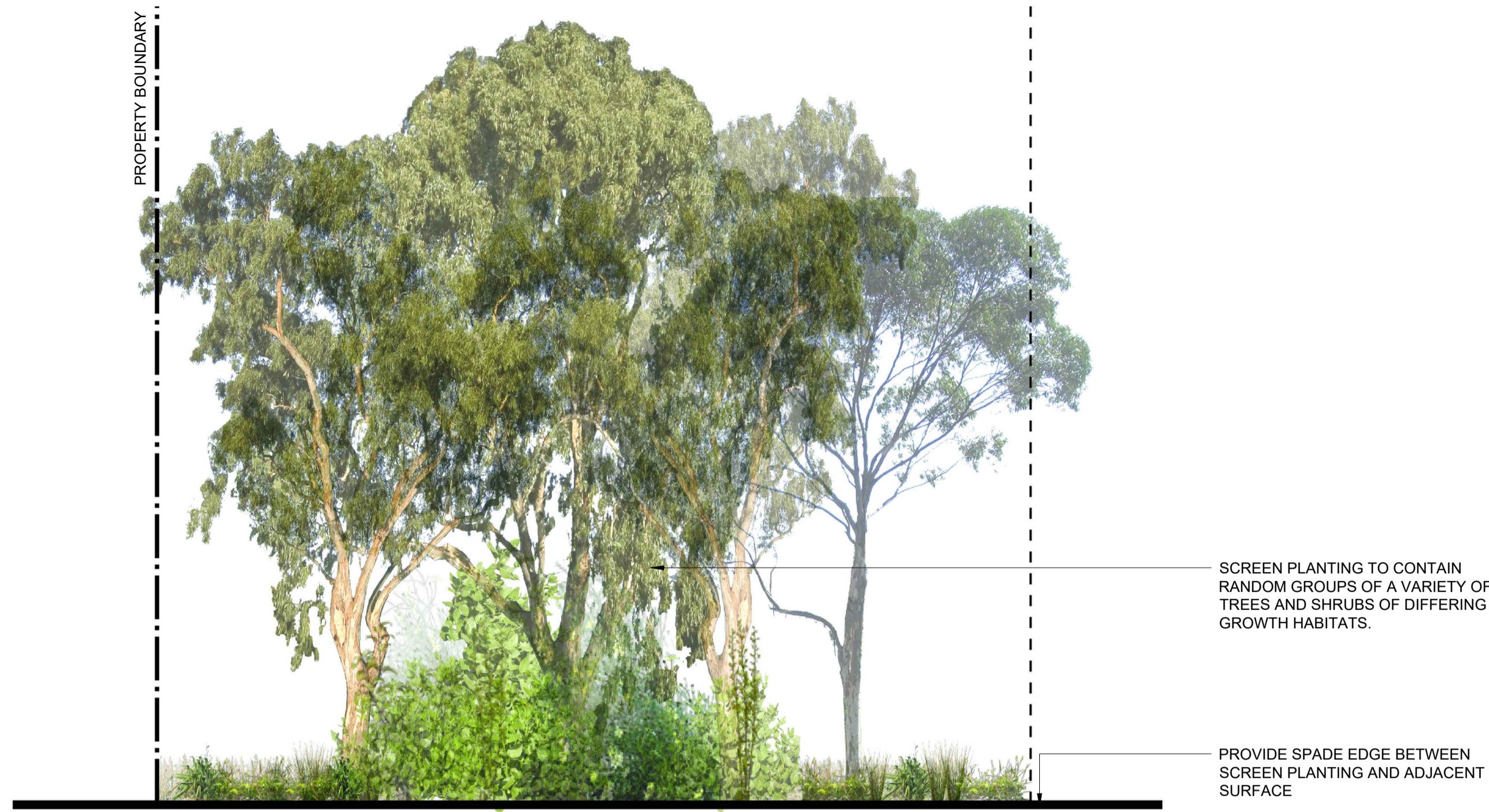
WEST MOKOAN
SOLAR FARM
PLANT SCHEDULE

SHEET NUMBER

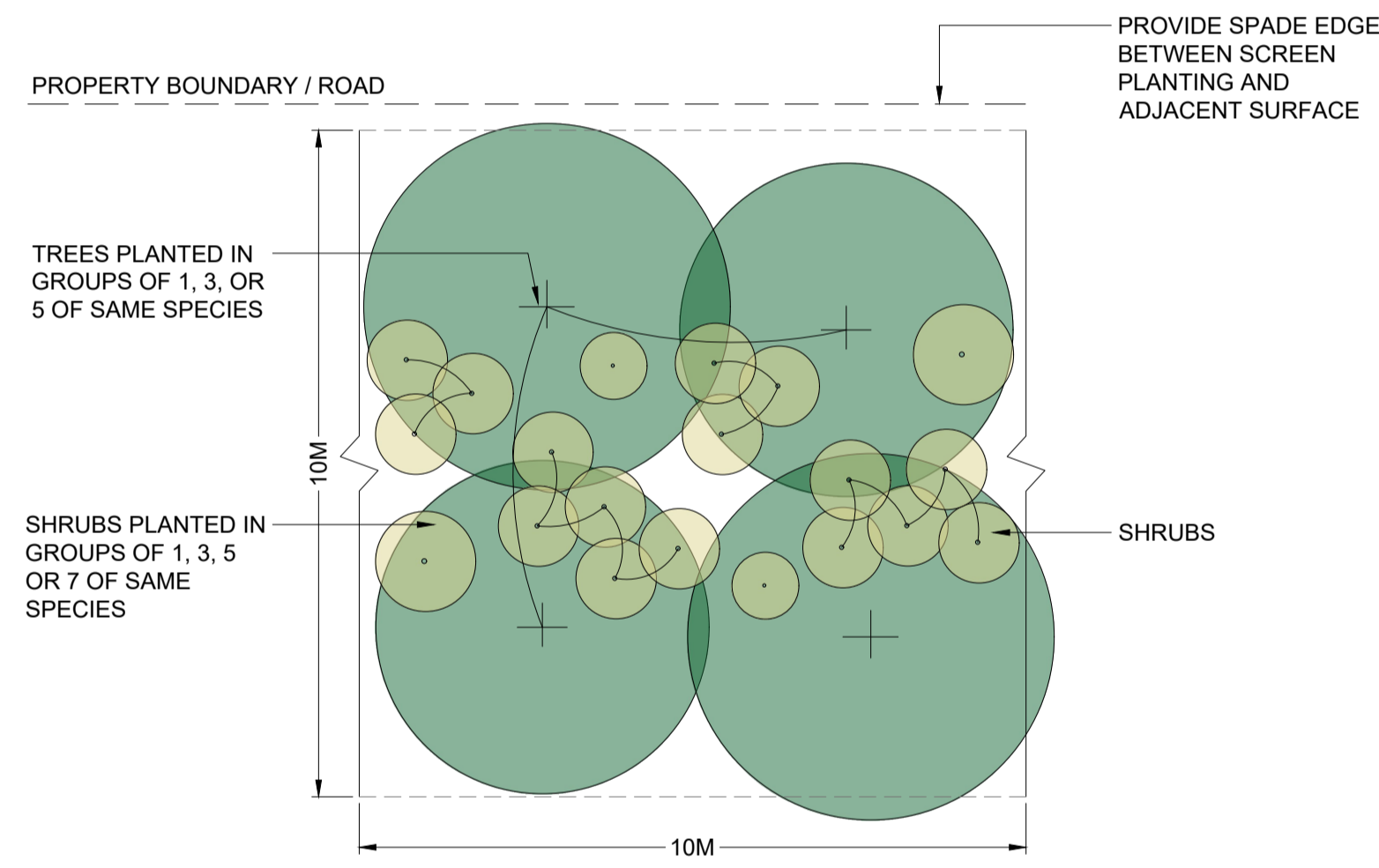
60597809-DWG-LD-1003



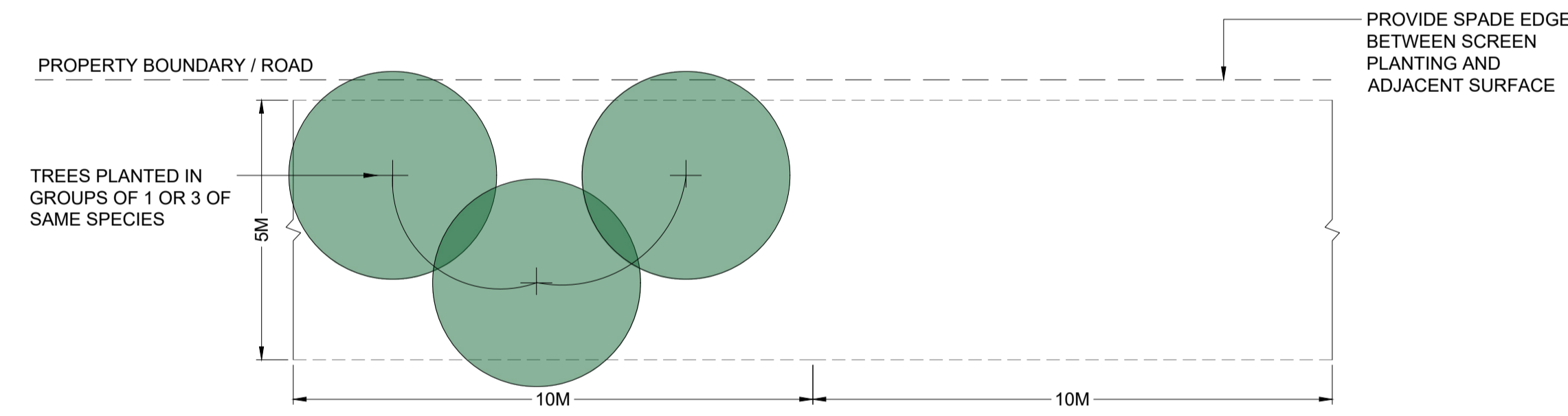
01 TYPICAL PLANTING DETAIL
 1:10 AT A3



02 PLANTING SECTION FOR 10M WIDE PLANTING ZONE - TARGETED
 1:100 AT A3



03 PLANTING PLAN FOR 10M WIDE PLANTING ZONE - TARGETED
 1:200 AT A3



4 PLANTING PLAN FOR 5M WIDE PLANTING ZONE - TYPICAL
 1:200 AT A3

This copied document to be made available for the sole purpose of enabling its consideration and review as part of a planning process under the Planning and Environment Act 1987. The document must not be used for any purpose which may breach any copyright

ADVERTISED PLAN

NOT FOR CONSTRUCTION

R RUSSELL	S JACOB	S JACOB
DESIGNER	CHECKED	APPROVED

I/R	DATE	DESCRIPTION
04	30/04/2021	FOR TOWN PLANNING
03	17/02/2020	FOR TOWN PLANNING
02	08/07/2019	FOR DISCUSSION
01	13/06/2019	PRELIMINARY - FOR DISCUSSION

60597809

WEST MOKOAN
 SOLAR FARM
 LANDSCAPE DETAILS

60597809-DWG-LD-1004