

ADVERTISED PLAN

This copied document to be made available for the sole purpose of enabling its consideration and review as part of a planning process under the Planning and Environment Act 1987. The document must not be used for any purpose which may breach any copyright

APPENDIX B CONSTRUCTION PLAN

EG401

8. Structure selection determines the type of pole attachment, either kingbolt and stay spacer, or stay bracket. See specific structure standards for details.
9. The length of steel stay wire provided will be sufficient for most stay type/pole height applications.
10. Two locknuts are provided with anchor rods. Locknuts must be installed as shown in Figure 1 and Figure 2.
11. For 66kV stay installations a stay "bridle" should be constructed at the depot prior to installing the stay. The bridle should be made from a 4.8m length of the stay wire coil, see Figure 3 for details.

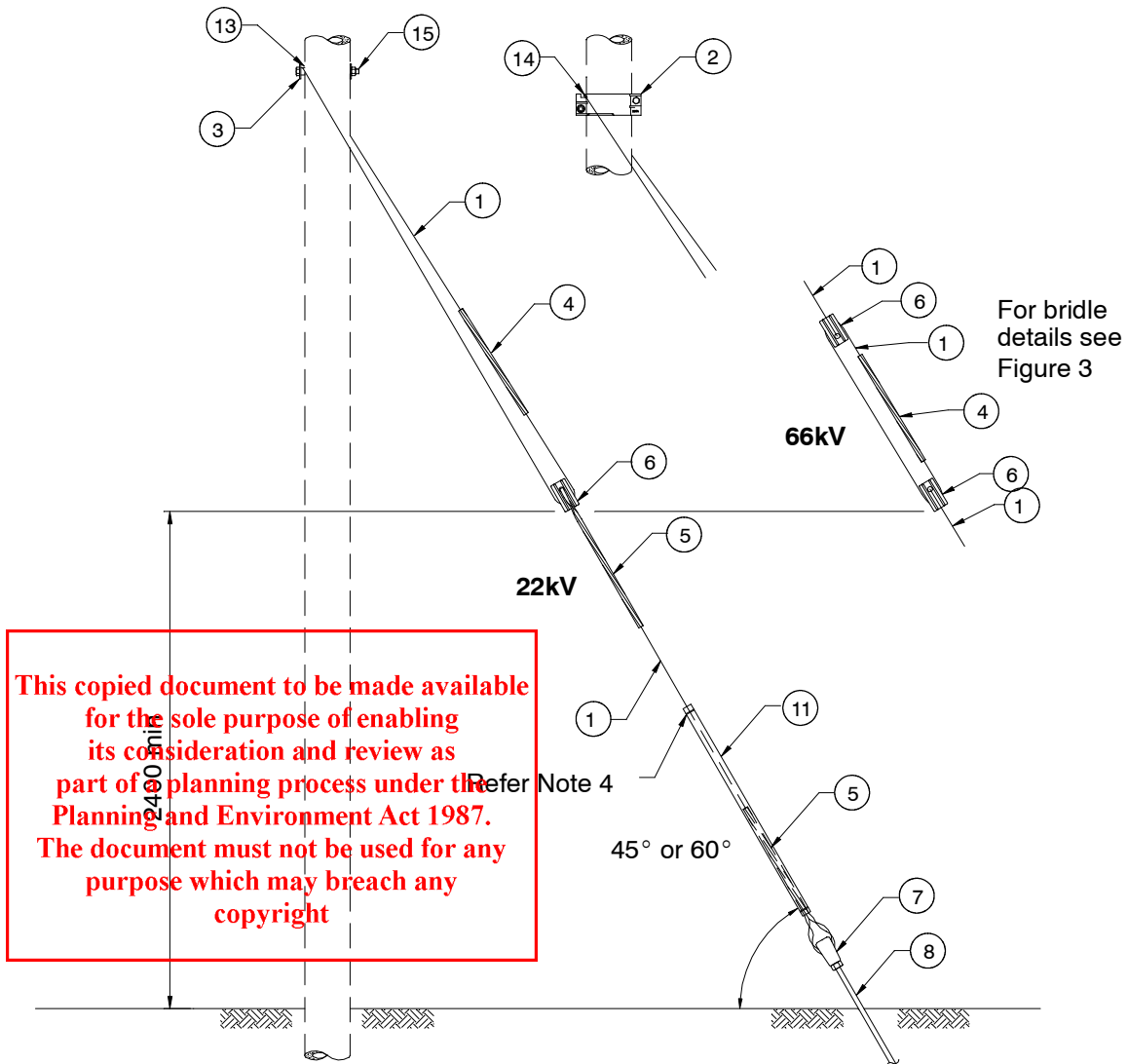




Figure 1 - No.5 Ground Stay Assembly - Concrete Pole

**ADVERTISED
PLAN**

31 Mar 09 Page 2 of 4	EG401		Distribution Construction Standard	
Administrator: <i>[Signature]</i> Tech Approval: <i>[Signature]</i>			No.5 Ground Stay Assembly —Concrete Pole	

EG401

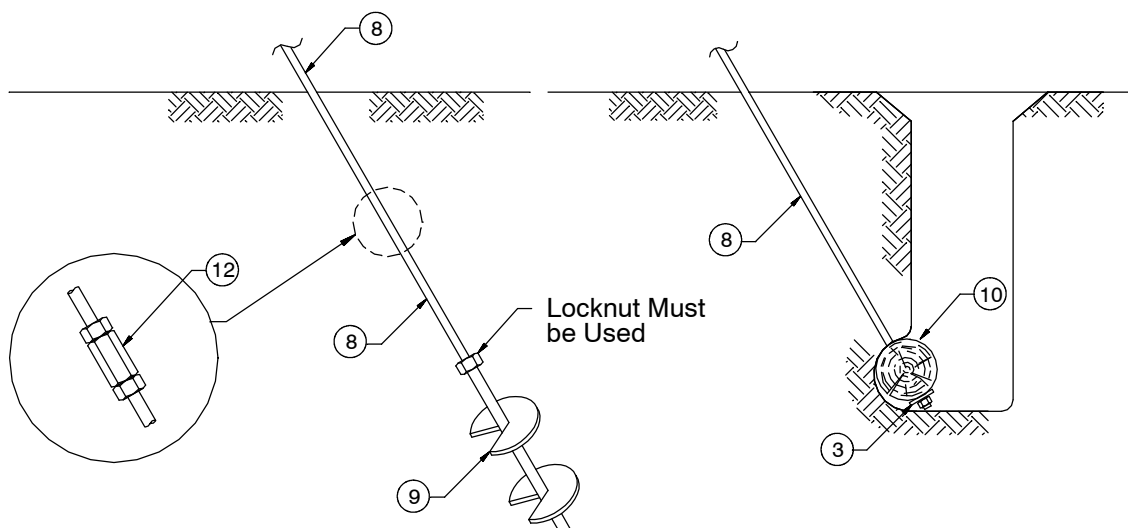
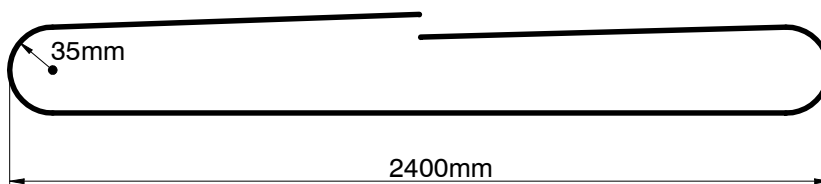
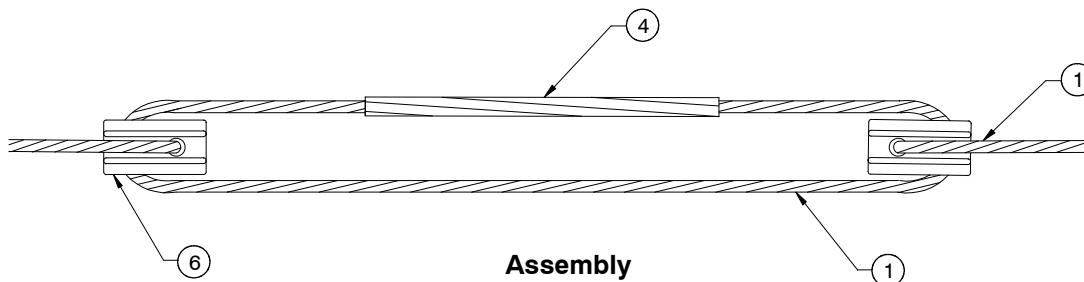


Figure 2 - No.5 Ground Stay Anchor Assembly - Concrete Pole



Bridle Details - See Note 10



Assembly

Figure 3 - 66kV Stay Bridle Details

This copied document to be made available for the sole purpose of enabling its consideration and review as part of a planning process under the Planning and Environment Act 1987. The document must not be used for any purpose which may breach any copyright

**ADVERTISED
PLAN**



Distribution
Construction Standard
**No.5 Ground Stay
Assembly
—Concrete Pole**



31 Mar 09
Page 3 of 4

EG401

Administrator:
Tech Approval:

[Signature]
[Signature]