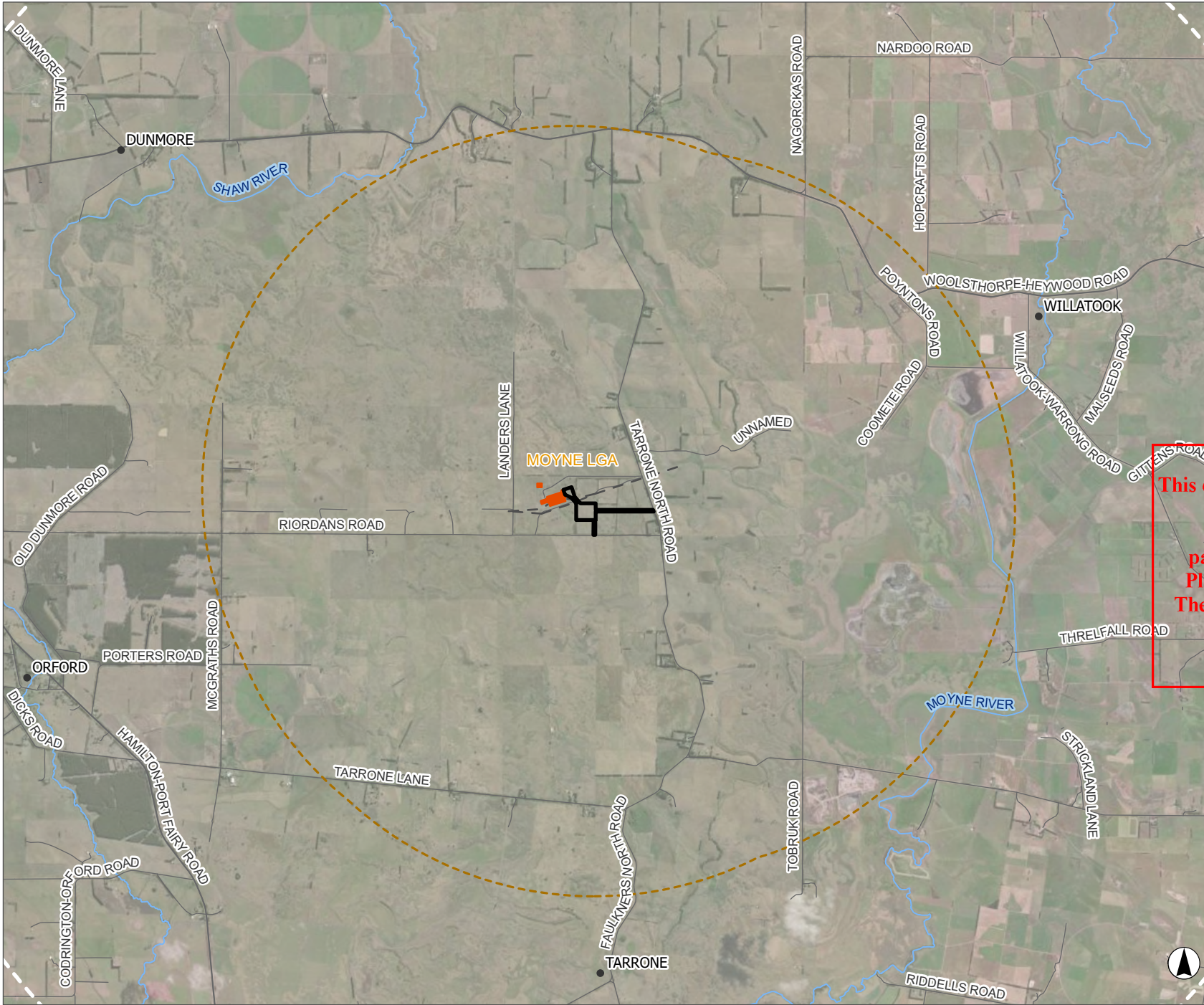


FIGURE 3A

Locality Plan

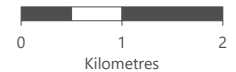
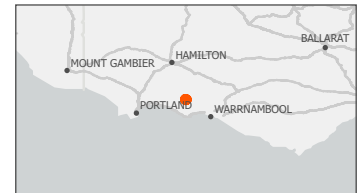
Legend

- Project Site Boundary
- Tarrone Terminal Station 500kV
- Local Government Area
10km Site Buffer
- Major Road
- Road
- Watercourse



ADVERTISED
PLAN

This copied document to be made available for the sole purpose of enabling its consideration and review as part of a planning process under the Planning and Environment Act 1987. The document must not be used for any purpose which may breach any copyright



Scale 1:75,000 at A4
GDA 1994 MGA Zone 54



This document and the information are subject to Terms and Conditions and Umwelt (Australia) Pty Ltd ("Umwelt") Copyright in the drawings, information and data recorded ("the information") is the property of Umwelt. This document and the information are solely for the use of the authorized recipient and this document may not be used, copied or reproduced in whole or part for any purpose other than that which it was supplied by Umwelt. Umwelt makes no representation, undertakes no duty and accepts no responsibility to any third party who may use or rely upon this document or the information.
APPROVED FOR AND ON BEHALF OF Umwelt

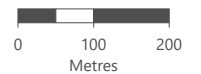
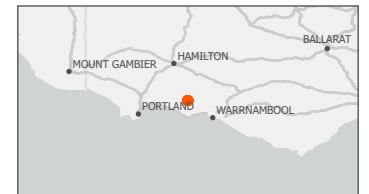
FIGURE 3B

Amended Site Plan

Legend

- Project Site Boundary
- BESS Module
- Site Compound and Laydown Area
- Tarrone Terminal Station 500kV
- Underground 132kV Transmission Line
- Lot Parcel
- Watercourse
- Native Vegetation**
 - Higher Rainfall Plains Grassy Woodland (EVC 55)
 - Plains Grassy Wetland (EVC 125)
 - Stony Knoll Shrubland (EVC 649)
- Listed Community**
 - Seasonal Herbaceous Wetlands (Freshwater) of the Temperate Lowland Plains (SHWTLP)
 - Native Vegetation to be Removed
 - Sensitive Receivers
- Land Use**
 - 5 - Primary Production
- Current Wetland**
 - Sedge/grass/forb
- Ecological Vegetation Class Group**
 - 13.1 Plains Woodlands or Forests - Freely-draining
- Cultural Heritage Sensitivity**
 - Stony rise

ADVERTISED
PLAN



Scale 1:10,000 at A4
GDA 1994 MGA Zone 54

This document and the information are subject to Terms and Conditions and Umwelt (Australia) Pty Ltd ("Umwelt") Copyright in the drawings, information and data recorded ("the information") is the property of Umwelt. This document and the information are solely for the use of the authorized recipient and this document may not be used, copied or reproduced in whole or part for any purpose other than that which it was supplied by Umwelt. Umwelt makes no representation, undertakes no duty and accepts no responsibility to any third party who may use or rely upon this document or the information.
APPROVED FOR AND ON BEHALF OF Umwelt



